

*Recd
Platted
recovered*

Book No. 8

*Copied
Compare*

T. 23

R. 4

Deputy Surveyor.

Gila and Salt River Meridian.

BOOK 444

Field Notes

OF

No. 444

THE SUBDIVISION LINES OF

Township *23 North* Range *4 East*

Gila and Salt River Meridian.

BY

W. R. Fitzgerald Deputy Surveyor.

Under his Contract of *July 27th* 188*2*

Survey Commenced *Feb 12th* 188*3*

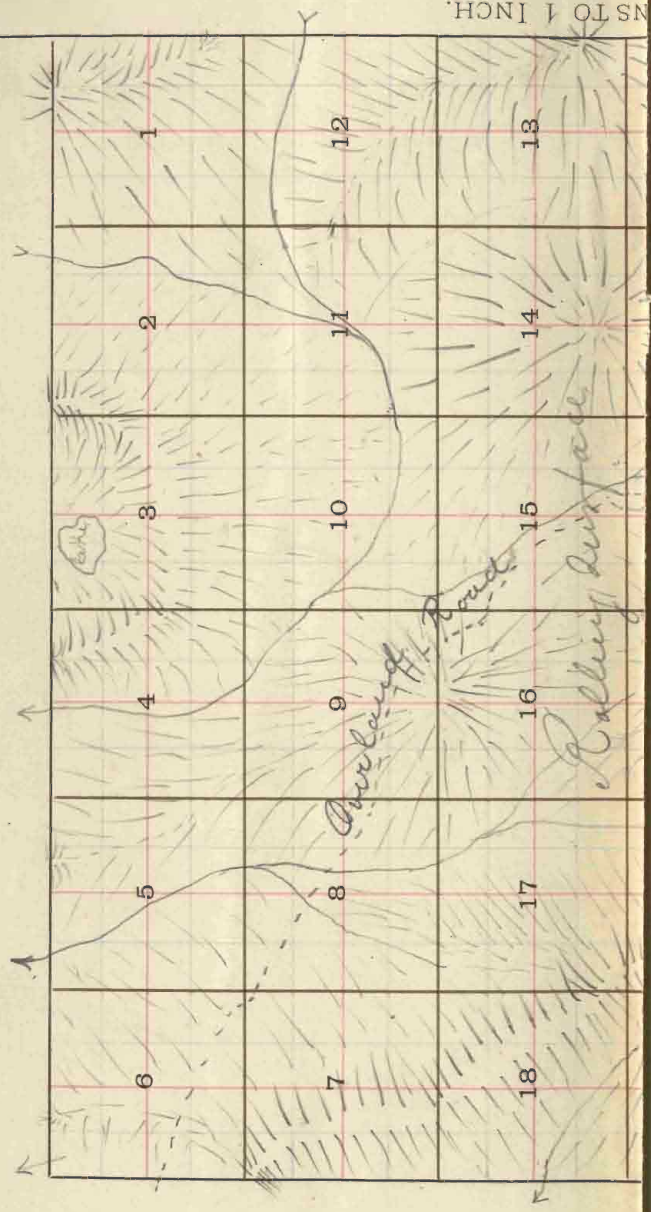
Survey Completed *Feb 14th* 188*3*

*Platted,
Copied for Washington,
Copied for Register,*

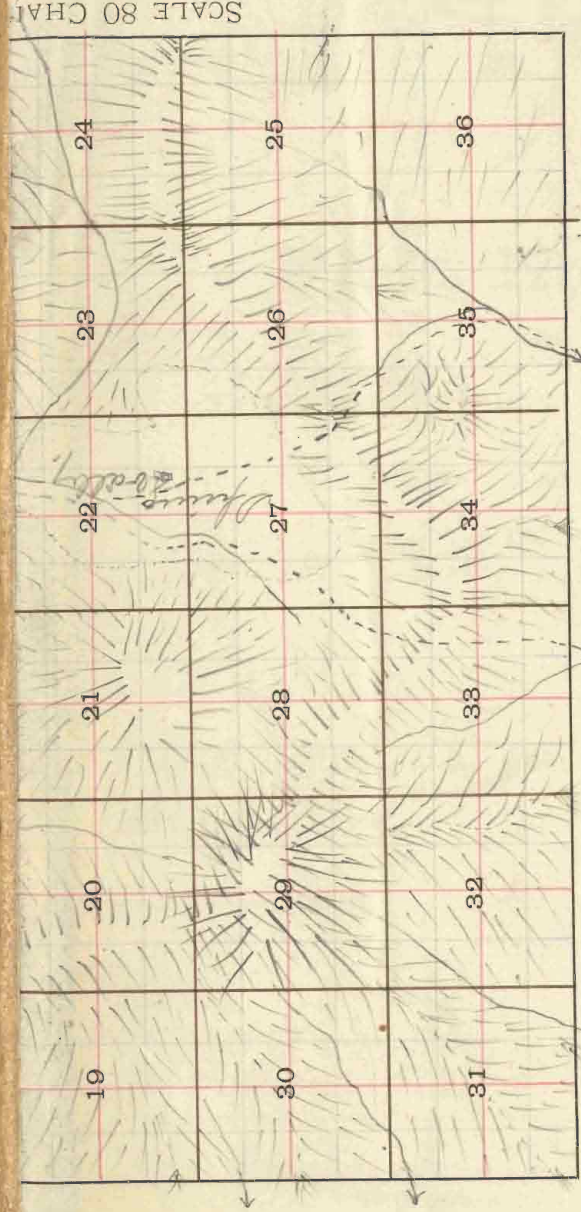
444

7870
7897
15767

Township No. 23 N Range No. 4 Q G & J T Meridian.

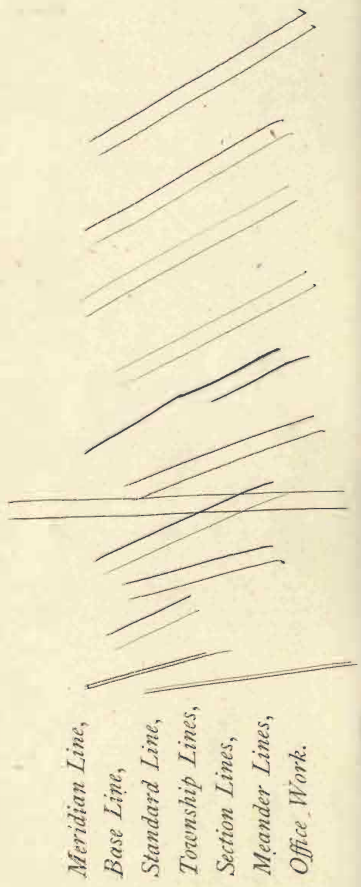


NS TO 1 INCH.



SCALE 80 CHAINS TO 1 INCH.

TOWNSHIP PLAT. A. J. LEARY, Manufacturing Stationer and Printer, 425-44 Sansome Street, S. F.



1A

BOOK 444

W. R. Fitzgerald Deputy Surveyor.

T. *23 N* R. *4 E*

Gila and Salt River Meridian.

Field Notes

OF

No. 444

THE SUBDIVISION LINES OF

Township *23 N* Range *4 E*

Gila and Salt River Meridian.

BY

W. R. Fitzgerald Deputy Surveyor.

Under his Contract of *July 29th* 1882

Survey Commenced *Feb 22nd* 1883

Survey Completed *Feb 14th* 1883

*Platted,
Copied for Washington,
Copied for Register,*

A. J. LEARY,
Printer, Publisher and Stationer,
402-404 Sansome Street, S. F.

13

Township *23 North*, Range *4 East*,*Gila and Salt River* Meridian.

BOOK 444
I N D E X .

6	60	5	44	4	33	3	22	2	11	1
59		58		43		32		21		10
7	57	8	42	9	31	10	20	11	9	12
56		55		41		30		19		8
18	54	17	40	16	29	15	18	14	7	13
53		52		39		28		17		6
19	51	20	38	21	27	22	16	23	5	24
50		49		37		26		15		4
30	48	29	36	28	25	27	14	26	3	25
47		46		35		24		13		2
31	45	32	34	33	23	34	12	35	1	36

Township..... Range.....

..... Meridian.

For Preliminary Notes and description
of instrument used, ^{see} Book No. 1

Survey made with Burt's Patent Improved Solar
Compass, ^{is} nearly new, and in first rate order. Made
by Otto Stenmel of Cassel.
Germany in 1881

1 C

BOOK 444

Township 23 N Range 4 E

(See previous page)

Gila and Salt River Meridian.

Chains

From the Corner to Sections 1, 2, 35 & 36 on the South boundary

previously set by me.

Run North, between Sections 35 and 36.

Variation 14° 45' East.

Descend. gradually

40.00

Set a Sand stone 14 x 10 x 4 ins., 10 ins. in the ground, for 1/4 Sec. Cor.; marked 1/4 on W.

face, and raised a mound of stone alongside. Pits impracticable.

from which

Yellow Pine 30 ins diam. bears N. 35° W. 48 lks. dist. marked 1/4 S. B. T. No other trees within limits.

76.00

Gross Wash, 30 lks. wide, Course S. W. and ascend.

80.00

Set a Sand stone 20 x 10 x 4 ins. 15 ins. in the ground for Cor. to Secs. 25, 26, 35 & 36 marked with 1 notch on S. and 1 notch on E. edges and raised a mound of stone alongside. Pits impracticable.

Land rolling.

Soil 3rd rate

Timber of Pine.

Vegetation. Grass & sage.

Township 23 N Range 11 EGila and Salt River Meridian.

Chains

East, on a random line between Sections 25 and 36.

Variation 14° 45' East.

Descend.

15.00 Cross Wash, 50 lks. wide, Course S. W.

40.00 Set temporary $\frac{1}{4}$ Sec. Cor.

79.80 Intersect E. B. of Tp. 31 lks. S. of cor. to secs.

25, 30, 31 & 36 ^{previously set by me.} from which corner, I run

S. 89° 47' N. on a true line, between sections 25 & 36

Variation 14° 45' East.

39.93 Set a Sand stone $14 \times 10 \times 4$ ins., 16
ins. in the ground, for $\frac{1}{4}$ Sec. Cor., marked $\frac{1}{4}$ on N
face, and raised a mound of stone alongside. Pits
impracticable.

79.80 The corner to sections 25, 26, 35 & 36

Land rolling.

Soil 3rd rate

Timber of pine

Vegetation. grass & sage.

Township 23 N Range 21 E

Gila and Salt River Meridian.

Chains

North, between Sections 25 and 26.

Variation $111^{\circ} 45'$ East.

Along S. Slope.

40.00

Set a Sand stone $20 \times 12 \times 4$ ins., 15 ins. in the ground, for $\frac{1}{4}$ Sec. Cor., marked $\frac{1}{4}$ on face, and raised a mound of stone alongside. Pits

impracticable.

from which

A Yellow Pine 20 ins diam. bears $N. 10^{\circ} E.$ 15 lks. dist. marked $\frac{1}{4}$ S. B. T.

A Yellow Pine 20 ins diam. bears $N. 30^{\circ} W.$ 24 lks. dist. marked $\frac{1}{4}$ S. B. T.

80.00

Set a Sand stone $20 \times 16 \times 4$ ins. 15 ins. in the ground for Cor. to Secs. 23, 24, 25, 26 marked with 2 notches on S. and 1 notch on E. edges and raised a mound of stone alongside. Pits impracticable.

from which

A Yellow Pine 40 ins diam. bears $N. 40^{\circ} E.$ 15 lks. dist. marked T. 23 N. R. 4 E. S. 24 B. T.

A Yellow Pine 20 ins diam. bears $S. 30^{\circ} W.$ 9 lks. dist. marked T. 23 N. R. 4 E. S. 20 B. T.

No other trees within limits.

Land rolling.

Soil 3rd rate

Timber of pine.

Vegetation. grass & sage.

Township 23 N Range 4 E

Gila and Salt River Meridian.

Chains

East, on a random line between Sections 24 and 25.

Variation $14^{\circ} 45'$ East.

Descend.

40.00 Set temporary $\frac{1}{4}$ Sec. Cor.:79.67 Intersect E. B. of Twp. 20 $\frac{1}{4}$ m. N. of cor. to sec.
previously set by me.
R. 24, 25 & 30 from which corner, I runN. $89^{\circ} 57' W.$ on a true line, between sections 24 & 25 -Variation $14^{\circ} 45'$ East.

39.83

Set a post 3 ft. long, 3 ins. diam. with marked stone
12 ins. in the ground, for $\frac{1}{4}$ Sec. Cor., marked $\frac{1}{2}$ S. on
N. face, dug pits, 18 x 18 x 12 ins., E. and W. of
post $\frac{1}{2}$ ft. dist., and raised a mound of earth $1\frac{1}{2}$ ft.
high, $3\frac{1}{2}$ ft. base around post.

from which

A Yellow Pine 20 ins diam. bears N. $10^{\circ} W.$ $2\frac{1}{2}$ m. dist.
marked $\frac{1}{4}$ S. B. T. No other trees within limits.

79.67

The corner to sections 23, 24, 25 & 26

Land rolling.

Soil 3rd rate

Timber of pine.

Vegetation. grass & sage.

Township 23 N. Range 4 E.

Gila and Salt River Meridian.

Chains

North, between Sections 23 and 24.

Variation $14^{\circ} 45'$ East.*Ascend.*

- 3.00 Top of Ridge, bears $S. 70^{\circ} W. 1170'$ and descend.
- 36.00 Cross Water Course $S. 70^{\circ} W.$
- 40.00 Set a sand stone $10 \times 10 \times 4$ ins., 10 ins. in the ground, for $\frac{1}{4}$ Sec. Cor., marked $\frac{1}{4}$ on W. face, and raised a mound of stone alongside. Pits impracticable.
- A Yellow Pine 24 ins diam. bears $S. 50^{\circ} W. 411$ kts. dist. marked $\frac{1}{4}$ S. B. T. No other trees within limits.
- 80.00 Set a sand stone $24 \times 10 \times 5$ ins. 18 ins. in the ground for Cor. to Secs. 13, 14, 23 & 24 marked with 3 notches on S. and 1 notch on E. edges and raised a mound of stone alongside. Pits impracticable.
- A Yellow Pine 30 ins diam. bears $N. 60^{\circ} W. 97$ kts. dist. marked T. 23 N. R. 4 E. S., 14 B. T.
- A Yellow Pine 20 ins diam. bears $N. 79^{\circ} E. 16$ kts. dist. marked T. 23 N. R. 4 E. S., 13 B. T.
- A Yellow Pine 40 ins diam. bears $S. 70^{\circ} W. 92$ kts. dist. marked T. 23 N. R. 4 E. S., 23 B. T.
- No other trees within limits.

Land mountainous

Soil 3° rate

Timber of pine

Vegetation. grass & sage.

Township 23 N. Range 4 E.

Gila and Salt River Meridian.

Chains East, on a random line between Sections 13 and 24.
Variation 14° 45' East.

Over rolling land.

40.00 Set temporary $\frac{1}{4}$ Sec. Cor.

79.93 Intersect E. B. of Tp. 43 1/2 kls. N. of cor. to secs.
13, 15, 19 & 24 ^{previously set by me.} from which corner, I run

N 89° 42' W. on a true line, between sections 13 & 24

Variation 14° 45' East.

79.96 Set a Sand stone 20 x 10 x 4 ins., 15
ins. in the ground, for $\frac{1}{4}$ Sec. Cor., marked $\frac{1}{4}$ on N.
face, and raised a mound of stone alongside. Pits

impracticable. from which
a Yellow Pine 40 ins diam. bears N 40° E 4 1/2 kls. dist.
marked $\frac{1}{4}$ S. B. T. No other trees within limits.

79.93 The corner to sections 13, 14, 23 & 24

Land rolling.

Soil 3rd rate

Timber of pine.

Vegetation. grass & sage.

Township 23 N Range 11 E

Gila and Salt River Meridian.

Chains

North, between Sections 13 and 14.

Variation 11° 45' East.

Over rolling land.

40.00

Set a Sand stone 20 x 10 x 10 ins., 10 ins. in the ground, for $\frac{1}{4}$ Sec. Cor., marked $\frac{1}{4}$ on W. face, and raised a mound of stone alongside. Pits impracticable.

A Yellow Pine 24 ins diam. bears S. 45° W. 50 lks. dist. marked $\frac{1}{4}$ S. B. T. No other trees within limits.

80.00

Set a Sand stone 18 x 15 x 8 ins., 12 ins. in the ground for Cor. to Secs. 11, 12, 13 & 14 marked with 4 notches on S. and 1 notch on E. edges and raised a mound of stone alongside. Pits impracticable.

A Yellow Pine 24 ins diam. bears N. 85° W. 57 lks. dist. marked T. 23 N. R. 4 E. S. 11 B. T. from which

A Yellow Pine 20 ins diam. bears S. 58° E. 1.24 lks. dist. marked T. 23 N. R. 4 E. S. 13 B. T.

No other trees within limits.

Land rolling.

Soil 3rd rate

Timber of pine.

Vegetation. grass & sage.

Township 23 N Range 11 ENo. 444 Gila and Salt River Meridian.

Chains

East, on a random line between Sections 12 and 13.

Variation 41° 45' East.

Ascend.

40.00 Set temporary $\frac{1}{4}$ Sec. Cor.65.00 Top of Spur, bears N. 20° W. & S. 20° E and descend.80.13 Intersect E. B. of Tp. 8 1/2 m. (N. of cor. to sec.7, 12, 13 & 18 ^{previously set by me.} from which corner, I runN. 59° 57' W. on a true line, between sections 12 & 13Variation 41° 45' East.40.00 Set a post 3 1/2 in. diam. with snacked stone 12
ins. in the ground, for $\frac{1}{4}$ Sec. Cor., marked $\frac{1}{4}$ on N.
face, and raised a mound of stone alongside. Pits
impracticable.80.13 The corner to sections 11, 12, 13 & 14.Land mountainousSoil 3rd rateTimber of pine.Vegetation. Grass & sage.

Township 23 N Range 4 E

Gila and Salt River Meridian.

Chains

North, between Sections 11 and 12.

Variation $141^{\circ} 45'$ East.

Ascend. gradually.

40.00

Set a sand stone $24 \times 15 \times 5$ ins., 18 ins. in the ground, for $\frac{1}{4}$ Sec. Cor., marked $\frac{1}{4}$ on W.

face, and raised a mound of stone alongside. Pits impracticable.

from which

A Yellow Pine 15 ins diam. bears $N. 35^{\circ} E.$ 52 lks. dist. marked $\frac{1}{4}$ S. B. T. No other trees within limits.

44.00

Top of Ridge, bears $E. \text{ of } W.$ and descend.

69.00

Cross low Sag and ascend.

80.00

Set a sand stone $14 \times 12 \times 8$ ins. 10 ins. in the ground for Cor. to Secs. 1. 2. 11 & 12 marked with 5 notches on S. and 1 notch on E. edges and raised a mound of stone alongside. Pits impracticable.

Land mountainous

Soil 3rd rate

Timber of pine.

Vegetation. grass & sage.

Township 23 N Range 11 EGila and Salt River Meridian.

Chains

East, on a random line between Sections 1 and 12.

Variation $117^{\circ} 115'$ East.

Ascend. gradually along S. W. slope.

40.00 Set temporary $\frac{1}{2}$ Sec. Cor. $\frac{1}{2}$ 79.88 Intersect E. B. of Tp. 12 $\frac{1}{2}$ m. N. of cor. to sec.previously set by me.
1. 6. 7. 12 from which corner, I runN. $89^{\circ} 55' W.$ on a true line, between sections 1 & 12Variation $117^{\circ} 115'$ East.

39.94 Set a post 3 ft. long, 3 ins. diam. with marked stone
12 ins. in the ground, for $\frac{1}{2}$ Sec. Cor., marked $\frac{1}{2}$ S. on
N. face, dug pits, 18 x 18 x 12 ins., E. and W. of
post $5\frac{1}{2}$ ft. dist., and raised a mound of earth $1\frac{1}{2}$ ft.
high, $3\frac{1}{2}$ ft. base around post.

79.88 The corner to sections 1, 2, 11 & 12

Land rolling.

Soil 3rd rate

Vegetation grass & sage.

11

Township 23 N Range 11 EGila and Salt River Meridian.

Chains

North, on a random line between Sections 1 and 2.

Variation: $14^{\circ} 45'$ East.

Ascend. gradually along W. Slope.

40.00 Set temporary $\frac{1}{4}$ Sec. Cor.

71.00 Enter Timber, to E. & W.

80.20 Intersect N. B. of Twp. 25 Ns. \odot of cor. to secs. $\frac{1}{2}$. 35 & 30 ^{previously set by me.} from which corner, I run \odot 11' \odot on a true line, between sections 1 & 2Variation $14^{\circ} 45'$ East.

40.20 Set a sand stone $24 \times 20 \times 12$ ins., 18
ins. in the ground, for $\frac{1}{4}$ Sec. Cor., marked $\frac{1}{4}$ on W
face, and raised a mound of stone alongside. Pits
impracticable.

80.20 The corner to sections 1, 2, 11 & 12

Land mountainous

Soil 3^{rd} rate

Timber of pine.

Vegetation. grass & sage.

I carefully examined the adjustments of my solar
compass to-day, particularly the latitude and revers-
ing apparatus, and found them correct.

W. R. Fitzgerald Feb. 12, 1853

Township 23 N Range H E

Gila and Salt River Meridian.

Chains

From the Corner to Sections 2, 3, 34 & 35 on the South boundary $\frac{1}{2}$ $\frac{1}{2}$ * *previously set by me.**Iron* North, between Sections 34 and 35.Variation $11^{\circ} 45'$ East.

Ascend.

40.00 Set a Sand stone $14 \times 12 \times 5$ ins., 10 ins. in the ground, for $\frac{1}{4}$ Sec. Cor., marked $\frac{1}{4}$ on W face, and raised a mound of stone alongside. Pits impracticable.

42.00 Top of butte bears E. & W.

80.00 Set a Sand stone $24 \times 10 \times 6$ ins. 18 ins. in the ground for Cor. to Secs. 20, 24, 34 & 35 marked with 1 notch on S. and 2 notches on E. edges and raised a mound of stone alongside. Pits impracticable.

A Yellow Pine 48 ins diam. bears $N. 45^{\circ} E.$ ^{from which} 49 lks. dist. marked T 23 N. R. 4 E. S., 26 B. T.

A Yellow Pine 24 ins diam. bears $N. 50^{\circ} W.$ 69 lks. dist. marked T 23 N. R. 4 E. S., 27 B. T.

A Yellow Pine 30 ins diam. bears $S. 69^{\circ} E.$ 55 lks. dist. marked T 23 N. R. 4 E. S., 35 B. T.

A Yellow Pine 20 ins diam. bears $S. 40^{\circ} W.$ 67 lks. dist. marked T 23 N. R. 4 E. S., 34 B. T.

Land mountainous

Soil 3^{rd} rateTimber of *pine*Vegetation. *grass & sage.*

Township 23 *N* Range 4 *E*

Gila and Salt River Meridian.

Chains

East, on a random line between Sections 26 and 35.

Variation $141^{\circ} 45'$ East.

- 12 Descend.
 14.00 Cross Road, bears $N 40^{\circ} W$
 Cross low Sag and ascend.
- 40.00 Set temporary $\frac{1}{4}$ Sec. Cor.
- 55.00 Top of Spur, bears $N. 20^{\circ} E. \& S. 20^{\circ} W$ and descend.
- 80.29 Intersect *N. & S. line*, 17 *fts. N.* of cor. to secs.
 25, 26, 30 & 36 from which corner, I run
 $N. 89^{\circ} 53' W.$ on a true line between sections 26 & 35
 Variation $141^{\circ} 45'$ East
- 40.14 Set a Sand stone $24 \times 10 \times 4$ ins., 15
 lbs. in the ground, for $\frac{1}{4}$ Sec. Cor., marked $\frac{1}{4}$ on *N.*
 face, and raised a mound of stone alongside. Pits
 impracticable.
- 80.29 The corner to sections 26, 27, 34 & 35
 Loc. is mountainous
 Soil 3^{rd} rate
 Timber of pine.
 Vegetation. grass & sage.

Township 23 N Range 4 E

Gila and Salt River Meridian.

Chains

North, between Sections 26 and 27.

Variation $14^{\circ} 45'$ East.

Ascend.

16.00 Top of Ridge, bears $N. 60^{\circ} E.$ & $S. 60^{\circ} W.$ and descend.13.70 Cross Road, bears $N. 40^{\circ} W.$ & $S. 40^{\circ} E.$

35.03 A Yellow Pine 36 ins diam. in line

40.00 Set a Sand stone 20 x 10 x 4 ins., 15 ins. in the ground, for $\frac{1}{4}$ Sec. Cor., marked $\frac{1}{4}$ on W. face, and raised a mound of stone alongside. Pits impracticable. from whichA Yellow Pine 30 ins diam. bears $S. 57^{\circ} E.$ 58 lks. dist. marked $\frac{1}{4}$ S. B. T. No other trees within limits.80.00 Set a Post 4 ft long 4 ins sq with marked stem 12 ins. in the ground for Cor. to Secs. 22-23-26-27 marked 7234
328 on W. E. R. 4 E. S. 26 on S. S. 27 on S. W. 752 on in W. faces with 2 notches on S. and 2 notch on E. edges,dig pits 18 x 18 x 12 ins. in each Sec., $5\frac{1}{2}$ ft. dist. and raised a mound of earth 2 ft. high, $4\frac{1}{2}$ ft. base. ^{around post} alongside. from whichA Yellow Pine $1\frac{1}{2}$ ins diam. bears $S. 70^{\circ} E.$ 27 lks. dist. marked T. 23 N. R. 4 E. S., 20 B. T.

No other trees within limits.

Land mountainous

Soil 3rd rate

Timber of Pine.

Vegetation. grass & sage.

Township 23 N Range 4 E

Gila and Salt River Meridian.

Chains

East, on a random line between Sections 23 and 26.

Variation $14^{\circ} 45'$ East.

Over almost level surface.

20.00 Leave Valley, bears N. & S. and ascend.

40.00 Set temporary $\frac{1}{2}$ Sec. Cor.

70.00 Top of Ridge, bears N. E. & S. W. and descend.

80.62 Intersect N. & S. line, 4 lks. N. of cor. to secs.

23 24 25 & 26 from which corner, 1 run

N. $89^{\circ} 50' W.$ on a true line between sections 23 & 26Variation $14^{\circ} 45'$ East

40.31 Set a post 3 ft. long, 3 ins. diam. with marked stone.

12 in. in the ground, for $\frac{1}{2}$ Sec. Cor., marked $\frac{1}{2}$ S. onN. face, and raised a mound of stone $1\frac{1}{2}$ ft. high, $3\frac{1}{2}$ ft. base around post. Pits impracticable.

from which

A Yellow Pine 38 ins diam. bears N. $40^{\circ} W.$ 7 lks. dist.marked $\frac{1}{2}$ S. B. T. No other trees within limits.

80.62 The corner to sections 22 23, 26 & 27

Land mountainous

Soil 3rd rate

Timber of pine.

Vegetation. grass & sage.

Township 23 N Range 4 E

Gila and Salt River Meridian.

Chains

North, between Sections 22 and 23.

Variation $14^{\circ} 45'$ East.

Cora Valley Land.

13.00 Leave Valley, bears $N. 30^{\circ} E. \& S. 30^{\circ} W.$ Enter Timber,40.00 Set a post 3 ft. long, 3 ins. diam 24 ins. in the ground,
for $\frac{1}{2}$ Sec. Cor., marked $\frac{1}{2}$ S. on W. face; from which
A Yellow Pine 24 ins diam. bears $S. 40^{\circ} E.$ 90 lks. dist.
marked $\frac{1}{2}$ S. B. T.A Yellow Pine 40 ins diam. bears $N. 34^{\circ} W.$ 80 lks. dist.
marked $\frac{1}{2}$ S. B. T.

60.00 Cross Water, Course N. W.

80.00 Set a post 4 ft. long, 4 ins. square, with marked stone
12 ins. in the ground, for Cor. to Secs. 21, 15, 22 & 23
marked T 23 N. S. 21 on N, E, R, 4 E. S. 23
on S, E, S, 22 on S, W, and S, 15 on N, W. face
with 3 notches on S, and 2 notches on E, edges,
dig pits 18 x 18 x 12 ins, in each Sec., $5\frac{1}{2}$ ft. dist.,
and raised a mound of earth 2 ft. high, $4\frac{1}{2}$ ft. base
around post.from which
A Yellow Pine 48 ins diam. bears $S. 20^{\circ} E.$ 57 lks. dist.
marked T 23 N. R. 4 E. S., 23 B. T.A Yellow Pine 24 ins diam. bears $N. 10^{\circ} W.$ 23 lks. dist.
marked T 23 N. R. 4 E. S., 15 B. T.

No other trees within limits.

Land level, & rolling.

Soil 3rd rate

Timber of Pine.

Vegetation. grass & sage.

Township 29 N. Range 4 E

Gila and Salt River Meridian.

Chains

East, on a random line between Sections 14 and 23.

Variation $14^{\circ} 45'$ East.

Ascend. gradually.

40.00 Set temporary $\frac{1}{4}$ Sec. Cor.

80.10 Intersect N. & S. line, 10 lks. S. of cor. to secs.

B. H. 23 & 24 from which corner, I run

S. $89^{\circ} 53'$ W. on a true line between sections 14 & 23Variation $14^{\circ} 45'$ East4005 Set a sand stone $24 \times 10 \times 6$ ins., 18
ins. in the ground, for $\frac{1}{4}$ Sec. Cor., marked $\frac{1}{4}$ on N.
face, and raised a mound of stone alongside. Pits

impracticable.

from which

A Yellow Pine 30 ins diam. bears N. 50° W. 90 lks. dist.
marked $\frac{1}{4}$ S. B. T. No other trees within limits.

80.10 The corner to sections 14, 15, 22 & 23

Land rolling.

Soil 3° rate

Timber of pine.

Vegetation. grass & sage.

Township 23 N. Range 11 E.

Gila and Salt River Meridian.

Chains

North, between Sections 14 and 15.

Variation $14^{\circ} 45'$ East.*Over rolling land.*

40.00

Set a post 3 ft. long, 3 ins. diam. with marked stone 12 ins. in the ground, for $\frac{1}{4}$ Sec. Cor., marked $\frac{1}{2}$ S. on W. face, dug pits, 18 x 18 x 12 ins., N. and S. of post $5\frac{1}{2}$ ft. dist., and raised a mound of earth $1\frac{1}{2}$ ft. high, $3\frac{1}{2}$ ft. base around post. from which

A Yellow Pine 20 ins diam. bears $N. 30^{\circ} E.$ 6 1/2 kls. dist. marked $\frac{1}{2}$ S. B. T. No other trees within limits.

80.00

Set a post 4 ft. long, 4 ins. square, with marked stone 12 ins. in the ground, for Cor. to Secs. 10, 11, 14 & 15 marked T, 23 N. S. 11, on N, E, R, 14 E, S. 14 on S, E, S, 15 on S, W, and S, 10 on N, W, face with 11 notches on S, and 2 notches on E, edges, dug pits 18 x 18 x 12 ins, in each Sec., $5\frac{1}{2}$ ft. dist., and raised a mound of earth 2 ft. high, $4\frac{1}{2}$ ft. base around post.

*Land rolling.*Soil 3rd rate

Timber of pine.

Vegetation grass & sage.

Township 23 N Range 4 E

Gila and Salt River Meridian.

Chains

East, on a random line between Sections 11 and 14.

Variation $14^{\circ} 40'$ East.*Over rolling land.*40.00 Set temporary $\frac{1}{4}$ Sec. Cor.79.74 Intersect N. & S. line. 14 lks. S. of cor. to secs.

11, 12, 13, 14 from which corner, I run

 $\$ 89^{\circ} 54' W.$ on a true line between sections 11 & 14Variation $14^{\circ} 45'$ East39.87 Set a sand stone $20 \times 10 \times 6$ ins., 15
ins. in the ground, for $\frac{1}{4}$ Sec. Cor., marked $\frac{1}{4}$ on N.
face, and raised a mound of stone alongside. Pits

impracticable.

from which

A Yellow Pine 14 ins diam. bears $N. 20^{\circ} W.$ 34 lks. dist.
marked $\frac{1}{4}$ S. B. T. No other trees within limits.

79.74 The corner to sections 10, 11, 14 & 15.

Land rolling.

Soil 3^{rd} rate

Timber of pine.

Vegetation. Grass & sage.

Township 23 N Range 11 EGila and Salt River Meridian.

Chains

North, between Sections 10 and 11.

Variation 11° 15' East.*Over rolling land.*16.00 *Cross low Sag and ascend.*40.00 *Set a sand stone 14 x 12 x 8 ins., 10 ins. in the ground, for $\frac{1}{4}$ Sec. Cor., marked $\frac{1}{4}$ on N. face, and raised a mound of stone alongside. Pits impracticable.*80.00 *Set a sand stone 14 x 12 x 6 ins. 10 ins. in the ground for Cor. to Secs. 2, 3, 10 & 11 marked with 5 notches on S. and 2 notches on E. edges and raised a mound of stone alongside. Pits impracticable.**Land rolling.**Soil 3rd rate**Timber of pine.**Vegetation. grass & sage.*

Township

23

N

Range

21

E

Gila and Salt River Meridian.

Chains

East, on a random line between Sections 2 and 11.

Variation

14° 45'

East.

*Over rolling land.*40.00 Set temporary $\frac{1}{4}$ Sec. Cor.

50.00 Cross low Sag and ascend.

79.97 Intersect N. & S. line, 23 lks. N. of cor. to secs.

1/2. 11 & 12 from which corner, I run

N. 89° 50' W. on a true line between sections 2 & 11

Variation

14° 45'

East

39.98

Set a Sand stone 20 x 15 x 6 ins., 15-
 ins. in the ground, for $\frac{1}{4}$ Sec. Cor., marked $\frac{1}{4}$ on N.
 face, and raised a mound of stone alongside. Pits
 impracticable.

79.97

The corner to sections 2, 3, 10 & 11

Land rolling.

Soil 3rd rateTimber of *Pin*Vegetation. *grass & sage.*

Township 23 N Range 11 E

Gila and Salt River Meridian.

Chains

North, on a random line between Sections 2 and 3.

Variation 14° 45' East.

Ascend. gradually.

40.00 Set temporary 1/4 Sec. Cor.

45.00 Under Timber, bears N. E. & S. W.

55.00 Top of Ridge, bears N. E. & S. W. and descend.

79.72 Intersect N. B. of Tp. 10 lks. E. of cor. to secs. previously set by me.

2. 3. 34 & 35 from which corner, I run

S. 71° E. on a true line, between sections 2 & 3

Variation 14° 45' East.

39.72 Set a Sand stone 12 x 10 x 8 ins., 8

ins. in the ground, for 1/4 Sec. Cor., marked 1/4 on W.

face, and raised a mound of stone alongside. Pits

impracticable.

79.72 The corner to sections 2, 3, 10 & 11

Land mountainous

Soil 3rd rate

Timber of Pine.

Vegetation. grass & sage.

I carefully examined the adjustments of my solar compass to-day, particularly the latitude and reversing apparatus, and found them correct.

S. C. Capps, Comptrolerman Feb. 12, 1883

Township 23 N Range 4 E

Gila and Salt River Meridian.

Chains

From the Corner to Sections 3, 4, 33 & 34 on the South boundary *SP*
*previously set by me.**Run* North, between Sections 33 and 34.Variation $14^{\circ} 15'$ East.*Ascend.*

40.00

Set a Sand stone $18 \times 18 \times 10$ ins., 12 ins. in the ground, for $\frac{1}{4}$ Sec. Cor., marked $\frac{1}{4}$ on *W.* face, and raised a mound of stone alongside. Pits impracticable. *from which*A Yellow Pine 14 ins diam. bears $N. 37^{\circ} E.$ 80 lks. dist. marked $\frac{1}{4}$ S. B. T. No other trees within limits.

41.00

Top of Ridge, bears E & $W.$ and descend.

80.00

Set a Sand stone $20 \times 10 \times 8$ ins. 15 ins. in the ground for Cor. to Secs 27, 28, 33 & 34 marked with J notch on S. and 3 notches on E. edges and raised a mound of stone alongside. Pits impracticable. *from which*A Yellow Pine 14 ins diam. bears $N. 87^{\circ} W.$ 20 lks. dist. marked T. 23 N. R. 4 E. S., 28 B. T.A Yellow Pine 18 ins diam. bears $N. 74\frac{1}{2}^{\circ} E.$ 30 lks. dist. marked T. 23 N. R. 4 E. S., 27 B. T.

No other trees within limits.

Land mountainous

Soil 3^{rd} rate

Timber of Yellow pine.

Vegetation. grass & sage.

Township 23 N. Range 11 E.Gila and Salt River Meridian.Chains East, on a random line between Sections 27 and 34.
Variation $14^{\circ} 45'$ East.

Ascend.

40.00 Set temporary $\frac{1}{4}$ Sec. Cor. *58.00 Top of Ridge, bears $S. 60^{\circ} W. \text{ \& } N. 60^{\circ} E.$ and descend.

79.57 Intersect N. & S. line, 45 lks. N. of cor. to secs.

20, 27, 34 & 36 From which corner, I run

 $N. 89^{\circ} 41' W.$ on a true line between sections 27 & 34Variation $14^{\circ} 45'$ East39.78 Set a Sand stone $14 \times 10 \times 14$ ins., 10
ins. in the ground, for $\frac{1}{4}$ Sec. Cor., marked $\frac{1}{4}$ on N.
face, and raised a mound of stone alongside. Pits

impracticable. from which

A Yellow Pine 30 ins diam. bears $S. 30^{\circ} W.$ 27 lks. dist.
marked $\frac{1}{4}$ S. B. T. No other trees within limits.

79.57 The corner to sections 27, 28, 33 & 34

Land mountainous

Soil 3rd rate

Timber of pine.

Vegetation. grass & sage.

Township 23 N Range 11 E

Gila and Salt River Meridian.

Chains

North, between Sections 27 and 28.

Variation $14^{\circ} 45'$ East.

Descend, gradually.

- 17.50 Cross Road, bears $N. 35^{\circ} E.$ & $S. 35^{\circ} W.$
- 32.00 Cross low Sag and ascend.
- 40.00 Set a post 3 ft. long, 3 ins. diam. with marked stone 12 ins. in the ground, for $\frac{1}{2}$ Sec. Cor., marked $\frac{1}{2}$ S. on W. face, dug pits, 18 x 18 x 12 ins., N. and S. of post $5\frac{1}{2}$ ft. dist., and raised a mound of earth $1\frac{1}{2}$ ft. high, $3\frac{1}{2}$ ft. base around post. from which
- A Yellow Pine 20 ins diam. bears $N. 60^{\circ} W.$ 44 lks. dist. marked $\frac{1}{2}$ S. B. T. No other trees within limits.
- 50.00 Set a post 4 ft. long, 4 ins. square, with marked stone 12 ins. in the ground, for Cor. to Secs. 21, 22, 27 & 28 marked T. 23 N. S. 22, on N, E, R, 4 E., S. 27 on S, E, S. 28 on S, W, and S, 21 on N, W, face with 2 notches on S, and 3 notches on E, edges, dug pits 18 x 18 x 12 ins. in each Sec., $5\frac{1}{2}$ ft. dist., and raised a mound of earth 2 ft. high, $4\frac{1}{2}$ ft. base around post. from which
- A Yellow Pine $1\frac{1}{8}$ ins diam. bears $N. 20^{\circ} E.$ 38 lks. dist. marked T. 23 N. R. 4 E., S., 27 B. T.
- A Yellow Pine 20 ins diam. bears $S. 13^{\circ} E.$ 12 lks. dist. marked T. 23 N. R. 4 E., S., 27 B. T.
- A Yellow Pine 20 ins diam. bears $S. 40^{\circ} W.$ 14 lks. dist. marked T. 23 N. R. 4 E., S., 28 B. T.
- No other trees within limits.

Land mountainous

Soil 3^{rd} rate Vegetation. grass & sage.

Timber of yellow pine.

Township 23 N Range 4 E

Gila and Salt River Meridian.

Chains

East, on a random line between Sections 22 and 27.

Variation $41^{\circ} 45'$ East.

Descend. very gradually.

20.00 Leave Timber, Enter Valley, bears $N. \text{ \& } S.$ 27.50 Cross Road, bears, $N. \text{ \& } S.$ 30.00 Cross Wash, 15 lks. wide, Course $N.$ 40.00 Set temporary $\frac{1}{4}$ Sec. Cor.55.75 Cross Road, bears, $N. 10^{\circ} W. \text{ \& } S. 10^{\circ} E.$ 57.61 A House bears $N.$ 11 lks. dist,

74.00 Enter Timber.

74.70 Intersect $N. \text{ \& } S.$ line. 28 lks. $N.$ of cor. to secs.

22.23.26.27 from which corner, I run

 $N. 89^{\circ} 48' W.$ on a true line between sections 22 & 27Variation $41^{\circ} 45'$ East

39857 Set a post 3 ft. long. 3 ins. diam. with marked stone
 12 ins. in the ground, for $\frac{1}{4}$ Sec. Cor., marked $\frac{1}{4}$ S. on
 N. face, dug pits, 18 x 18 x 12 ins., $E.$ and $W.$ of
 post $5\frac{1}{2}$ ft. dist., and raised a mound of earth $1\frac{1}{2}$ ft.
 high, $3\frac{1}{2}$ ft. base around post. from which

7270 The corner to sections 21. 22. 27 & 28

Land mountainous & level.

Soil 2nd. 3rd rate

Timber of pine.

Vegetation. grass & sage.

Township

23

N

Range

4

E

Gila and Salt River Meridian.

Chains

North, between Sections 21 and 22.

Variation

14° 45'

East.

Ascend. along E. slope of Butte.
Top of Butte.

21.00

40.00

Set a post 3 ft. long, 3 ins. diam. with marked stone
12 ins. in the ground, for $\frac{1}{4}$ Sec. Cor., marked $\frac{1}{4}$ S. on
W. face, dug pits, 18 x 18 x 12 ins., N. and S. of
post $5\frac{1}{2}$ ft. dist., and raised a mound of earth $1\frac{1}{2}$ ft.
high, $3\frac{1}{2}$ ft. base around post.

80.00

Set a post 4 ft. long, 4 ins. square, with marked stone
12 ins. in the ground, for Cor. to Secs. 15, 16, 21 & 22
marked T. 23 N. S. 15, on N, E, R. 4 E. S. 22
on S, E, S, 21 on S, W, and S, 16 on N, W, face
with 3 notches on S, and 3 notches on E, edges,
dug pits 18 x 18 x 12 ins. in each Sec., $5\frac{1}{2}$ ft. dist.,
and raised a mound of earth 2 ft. high, $4\frac{1}{2}$ ft. base
around post.

from which

A Yellow Pine 24 ins diam. bears N. 69 $\frac{1}{2}$ ° W., 14 lks. dist.
marked T. 23 N. R. 4 E. S., 16 B. T.

A Yellow Pine 30 ins diam. bears S. 70° E. 16 lks. dist.
marked T. 23 N. R. 4 E. S., 22 B. T.

A Yellow Pine 20 ins diam. bears N. 20° E. 6 lks. dist.
marked T. 23 N. R. 4 E. S., 15 B. T.

No other trees within limits.

Land rolling.

Soil 3rd rate

Timber of pine.

Vegetation. grass & sage.

Township 23 N Range 11 E

Gila and Salt River Meridian.

Chains	East, on a random line between Sections 15 and 22.
	Descend. gradually. Variation $14^{\circ} 45'$ East.
40.00	Set temporary $\frac{1}{2}$ Sec. Cor.
45.00	Enter Valley, bears N. & S.
50.00	Cross Road, bears, N. & S.
55.00	Cross Wash, 20 lks. wide, Course N.W.
65.00	Enter Valley, bears N. 70° W. & S. 70° E.
80.08	Intersect N. & S. line, 5 lks. S. of cor. to secs. 14. 15. 22 & 23 from which corner, I run $S 89^{\circ} 58' W.$ on a true line between sections 15 & 22 Variation $14^{\circ} 45'$ East
40.04	Set a post 3 ft. long, 3 ins. diam 24 ins. in the ground, for $\frac{1}{2}$ Sec. Cor., marked $\frac{1}{2}$ S. on N. face; from which a Yellow Pine 20 ins diam. bears N. $5\frac{1}{2}^{\circ}$ W. 52 lks. dist. marked $\frac{1}{2}$ S. B. T.
	a Yellow Pine 18 ins diam. bears S. 80° E. 64 lks. dist. marked $\frac{1}{2}$ S. B. T.
80.08	The corner to sections 15, 16, 21 & 22. Land rolling. " level. Soil 3 rd rate Timber of pine. Vegetation. grass & sage.

Township 23 N Range 4 E
 Gila and Salt River Meridian.

Chains

North, between Sections 15 and 16.

Variation $14^{\circ} 45'$ East.

Over rolling land.

40.00

Set a post 3 ft. long, 3 ins. diam. with marked stone 12 ins. in the ground, for $\frac{1}{2}$ Sec. Cor., marked $\frac{1}{2}$ S. on W. face, dug pits, 18 x 18 x 12 ins., N. and S. of post $5\frac{1}{2}$ ft. dist., and raised a mound of earth $1\frac{1}{2}$ ft. high, $3\frac{1}{2}$ ft. base around post. from which

A Yellow Pine 30 ins diam. bears $S. 83^{\circ} W.$ 67 lks. dist. marked $\frac{1}{2}$ S. B. T. No other trees within limits.

60.00

Cross Road, bears, $N. 30^{\circ} W.$ & $S. 30^{\circ} E.$

80.00

Set a post 4 ft. long, 4 ins. square, with marked stone 12 ins. in the ground, for Cor. to Secs. 9, 10, 15 & 16 marked T. 23 N. S. 10, on N, E, R, 4 E., S. 15 on S, E, S, 16 on S. W, and S, 9 on N, W, face with 4 notches on S, and 3 notches on E, edges, dug pits 18 x 18 x 12 ins. in each Sec., $5\frac{1}{2}$ ft. dist., and raised a mound of earth 2 ft. high, $4\frac{1}{2}$ ft. base around post. from which

A Yellow Pine 24 ins diam. bears $N. 2^{\circ} W.$ 41 lks. dist. marked T. 23 N. R. 4 E. S., 9 B. T.

A Yellow Pine 12 ins diam. bears $S. 78^{\circ} E.$ 70 lks. dist. marked T. 23 N. R. 4 E. S., 16 B. T.

A Yellow Pine 11 ins diam. bears $S. 59\frac{1}{4}^{\circ} W.$ 73 lks. dist. marked T. 23 N. R. 4 E. S., 10 B. T.

Land rolling. *in other line in limit*

Soil 3^{rd} rate

Timber of Pine

Vegetation. Grass and Sage

Township 23 N. Range 4 E.Gila and Salt River Meridian.Chains East, on a random line between Sections 10 and 15.
Variation $14^{\circ} 45'$ East.

Descend.

7.00 Cross low Sag and ascend.

40.00 Set temporary $\frac{1}{4}$ Sec. Cor.

79.82 Intersect N. & S. line, 50 lks. S. of cor. to secs.

10.11. 14 & 15 From which corner, I run

 $S. 89^{\circ} 36' W.$ on a true line between sections 10 & 15Variation $14^{\circ} 45'$ East39.91 Set a Sand stone $18 \times 12 \times 10$ ins., 12
ins. in the ground, for $\frac{1}{4}$ Sec. Cor., marked $\frac{1}{4}$ on N.
face, and raised a mound of stone alongside. Pits
impracticable.

79.82 The corner to sections 9. 10. 15 & 16.

Land rolling.

Soil 3^{rd} rate

Timber of pine.

Vegetation. grass & sage.

Township 23 N. Range 4 E

Gila and Salt River Meridian.

Chains North, between Sections 9 and 10.

Variation $14^{\circ} 45'$ East.*Over rolling land.*

40.00 Set a Sand stone $12 \times 10 \times 6$ ins., 8
 ins. in the ground, for $\frac{1}{4}$ Sec. Cor., marked $\frac{1}{4}$ on W.
 face, and raised a mound of stone alongside. Pits
 impracticable.

52.00 Cross low Sag and ascend.

64.00 Leave Timber, $N. 60^{\circ} W.$ & $N. 60^{\circ} E.$

80.00 Set a Sand stone $20 \times 14 \times 6$ ins. 10 ins. in
 the ground for Cor. to Secs. 3, 4, 9 & 10 marked
 with 6 notches on S. and 3 notches on E. edges and
 raised a mound of stone alongside. Pits impracticable.

*Land rolling.*Soil 3rd rate

Vegetation Sage.

Township 23 N Range 4 E

Gila and Salt River Meridian.

Chains

East, on a random line between Sections 3 and 10.

Variation $141^{\circ} 45'$ East.*Over rolling land.*40.00 Set temporary $\frac{1}{4}$ Sec. Cor.^s

80.23 Intersect N. & S. line, 35 lks. S. of cor. to secs.

2, 3, 10 & 11 from which corner, I run

S. $89^{\circ} 15'$ W. on a true line between sections 3 & 10Variation $14^{\circ} 15'$ East

40.11 Set a sand stone $11 \times 12 \times 3$ ins., 10
 ins. in the ground, for $\frac{1}{4}$ Sec. Cor., marked $\frac{1}{4}$ on N.
 face, and raised a mound of stone alongside. Pits
 impracticable.

80.23 The corner to sections 3, 4, 9 & 10

Land rolling.

Soil 3rd rate

Vegetation grass & sage.

Township 23 N. Range 4 EGila and Salt River Meridian.

Chains

North, on a random line between Sections 3 and 4.

Variation: $11^{\circ} 45'$ East.*Ascend. gradually.*37.00 Top of Ridge, bears $N. 30^{\circ} W.$ & $S. 30^{\circ} E.$ and descend.40.00 Set temporary $\frac{1}{4}$ Sec. Cor.79.90 Intersect N. B. of Twp. 30 1ks. W. of cor. to secs.
previously set by me.

B. 4. 33 & 34 from which corner, I run

 $S. 13' W.$ on a true line, between sections 3 & 4Variation $14^{\circ} 45'$ East.39.90 Set a sand stone $10 \times 10 \times 6$ ins. $\frac{1}{4}$ ins. in the ground, for $\frac{1}{4}$ Sec. Cor., marked $\frac{1}{4}$ on N. face, and raised a mound of stone alongside. Pits impracticable.

79.90 The corner to sections 3. 4. 9 & 10

Land Mountainous.

Soil 3^{rd} rate

Vegetation Grass & Sage.

I carefully examined the adjustments of my solar compass to-day, particularly by the latitude and surveying apparatus, and found them correct.

W. R. Fitzgerald Feb. 10. 1883

Township 23 N Range 4 EGila and Salt River Meridian.

Chains

From the Corner to Sections 4, 5, 32 & 33 on the South boundary *of 1/2*
*previously set by me.**Run* North, between Sections 32 and 33.Variation $11^{\circ} 45'$ East.

Ascend.

40.00

Set a Sand stone $18 \times 10 \times 6$ ins., 12
ins. in the ground, for $\frac{1}{4}$ Sec. Cor., marked $\frac{1}{4}$ on W.
face, and raised a mound of stone alongside. Pits

impracticable.

from which

A Yellow Pine 10 ins diam. bears $S. 46^{\circ} W.$ 94 lks. dist.
marked $\frac{1}{2}$ S. B. T. No other trees within limits.

80.00

Set a Sand stone $10 \times 14 \times 6$ ins. 10 ins. in
the ground for Cor. to Secs. 28, 29, 32 & 33 marked
with | notch on S. and 11 notches on E. edges and
raised a mound of stone alongside. Pits impracticable.A Yellow Pine 28 ins diam. bears $N. 17^{\circ} W.$ 96 lks. dist.
marked T. 23 N. R. 4 E. S., 29 B. T.A Yellow Pine 10 ins diam. bears $N. 29^{\circ} E.$ 14 lks. dist.
marked T. 23 N. R. 4 E. S., 25 B. T.

No other trees within limits.

Land mountainous

Soil 3rd rate

Timber of pine.

Vegetation. grass & sage.

Township 7-23 N. Range 11 E.

Gila and Salt River Meridian.

Chains

East, on a random line between Sections 28 and 33.

Variation $14^{\circ} 45'$ East.

Descend.

20.00 Cross Ravine, Course $S. 20^{\circ} E.$ and ascend
40.00 Set temporary $\frac{1}{4}$ Sec. Cor.46.00 Top of Ridge, bears $S. E. \& N. W.$ and descend.70.00 Cross Road, bears, $N. 25^{\circ} E. \& S. 25^{\circ} W.$ 79.91 Intersect N. & S. line, 10 lks. $N.$ of cor. to secs.

27, 28, 33 & 34 from which corner, I run

 $N. 56^{\circ} W.$ on a true line between sections 28 & 33Variation $14^{\circ} 45'$ East

39.95 Set a Sand stone 10 x 12 x 5 ins., 10

ins. in the ground, for $\frac{1}{4}$ Sec. Cor., marked $\frac{1}{4}$ on $N.$
face, and raised a mound of stone alongside. Pits

unpracticable. from which

A Yellow Pine 30 ins diam. bears $N. 65^{\circ} W.$ 50 lks. dist.
marked $\frac{1}{4}$ S. B. T. No other trees within limits.

79.91 The corner to sections 28, 29, 32 & 33

Land mountainous

Soil 3^{rd} rate

Timber of pine.

Vegetation. grass & sage.

Township 23 N Range 11 E

Gila and Salt River Meridian.

Chains North, between Sections 28 and 29.

Variation $14^{\circ} 15'$ East.*Ascend.*38.00 Top of Ridge, bears N. 40° E. $1/2$ S. and descend.40.00 Set a post 3 ft. long, 3 ins. diam. with marked stone 12 ins. in the ground, for $1/2$ Sec. Cor., marked $1/2$ S. on W. face, dug pits, 18 x 18 x 12 ins., N. and S. of post $5 1/2$ ft. dist., and raised a mound of earth $1 1/2$ ft. high, $3 1/2$ ft. base around post.

from which

A Yellow Pine 10 ins diam. bears N. 64° E. 90 lks. dist. marked $1/2$ S. B. T. No other trees within limits.80.00 Set a post 4 ft. long, 4 ins. square, with marked stone 12 ins. in the ground, for Cor. to Secs. 20, 21, 28 & 29 marked T. 23 N. S. 21 on N, E, R. H. E., S. 28 on S, E, S, 29 on S, W, and S, 20 on N, W, face with 2 notches on S, and 4 notches on E, edges, dug pits 18 x 18 x 12 ins, in each Sec., $5 1/2$ ft. dist., and raised a mound of earth 2 ft. high, $4 1/2$ ft. base around post.

from which

A Yellow Pine 20 ins diam. bears N. 30° E. 84 lks. dist. marked T. 23 N. E. 4 E., S., 21 B. T.A Yellow Pine 10 ins diam. bears N. 15° W. 60 lks. dist. marked T. 23 N. R. H. E., S., 20 B. T. No other trees within limits.

Land mountainous

Soil 3rd rate

Timber of pine.

Vegetation. grass & sage.

Township

23

N

Range

4

E

Gila and Salt River Meridian.

Chains

East, on a random line between Sections 21 and 28.

Variation $141^{\circ} 45'$ East.

Descend. over high rolling surface.

40.00 Set temporary $\frac{1}{2}$ Sec. Cor.

79.82 Intersect N. & S. line, 20 lks. S. of cor. to secs.

21, 22, 27 & 28 from which corner, I run

 $S. 89^{\circ} 49' W.$ on a true line between sections 21 & 28Variation $141^{\circ} 45'$ East

39.91 Set a post 3 ft. long, 3 ins. diam. with marked stone

12 ins. in the ground, for $\frac{1}{2}$ Sec. Cor., marked $\frac{1}{2}$ S. onN. face, and raised a mound of stone $7\frac{1}{2}$ ft. high, $5\frac{1}{2}$ ft. base around post. Pits impracticable.

from which

Yellow Pine 2 ins diam. bears $N. 30^{\circ} W.$ 88 lks. dist.marked $\frac{1}{2}$ S. B. T.

No other trees within limits.

79.82 The corner to sections 20, 21, 28 & 29

Land mountainous

Soil 3rd rate

Timber of pine.

Vegetation. grass & sage.

Township 23 N Range 11 EGila and Salt River Meridian.

Chains

North, between Sections 20 and 21.

Variation $141^{\circ} 45'$ East.

Descend.

40.00

Set a Sand stone $10 \times 12 \times 8$ ins., 10 ins. in the ground, for $\frac{1}{4}$ Sec. Cor., marked $\frac{1}{4}$ on W. face, and raised a mound of stone alongside. Pits

impracticable.

from which

A Yellow Pine 10 ins diam. bears $N. 27^{\circ} W.$ 88 lks. dist. marked $\frac{1}{4}$ S. B. T. No other trees within limits.

80.00

Set a post 4 ft. long, 4 ins. square, with marked stone 12 ins. in the ground, for Cor. to Secs, 10, 17, 20 & 21 marked T. 23 N. S. 10, on N. E. R. 4 E., S. 21 on S. E. S. 20 on S. W, and S. 17 on N. W, face with 3 notches on S, and 4 notches on E, edges, dug pits $18 \times 18 \times 12$ ins, in each Sec., $5\frac{1}{2}$ ft. dist., and raised a mound of earth 2 ft. high, $4\frac{1}{2}$ ft. base around post.

from which

A Yellow Pine 30 ins diam. bears $N. 75^{\circ} W.$ 84 lks. dist. marked T. 23 N. R. 4 E. S., 17 B. T.

A Yellow Pine 20 ins diam. bears $N. 60^{\circ} E.$ 1.17 lks. dist. marked T. 23 N. R. 4 E. S., 10 B. T.

A Yellow Pine 24 ins diam. bears $S. 48\frac{1}{2}^{\circ} E.$ 1.10 lks. dist. marked T. 23 N. R. 4 E. S., 21 B. T. No other trees within limits.

Land mountainous

Soil 3^{rd} rate

Timber of pine.

Vegetation. sage & grass.

Township

23

N

Range

4

E

Gila and Salt River Meridian.

Chains

East, on a random line between Sections 16 and 21.

Variation $14^{\circ} 45'$ East.

Ascend.

25.00 Top of Spur, bears $S. 20^{\circ} E. \& N. 20^{\circ} W$ and descend.40.00 Set temporary $\frac{1}{4}$ Sec. Cor.43.20 Cross Wash, 20 lks. wide, Course $N. 20^{\circ} W$ and ascend.

79.69 Intersect N. & S. line, 13 lks. S. of cor. to secs.

15.16, 21 & 22 from which corner, I run

 $S. 89^{\circ} 54' W.$ on a true line between sections 16 & 21Variation $14^{\circ} 45'$ East

39.84

Set a Sand stone $14 \times 10 \times 6$ ins., 10
ins. in the ground, for $\frac{1}{4}$ Sec. Cor., marked $\frac{1}{4}$ on N.
face, and raised a mound of stone alongside. Pits

impracticable.

from which

A Yellow Pine 40 ins diam. bears $N. 20^{\circ} W.$ 49 lks. dist.
marked $\frac{1}{4}$ S. B. T. No other trees within limits.

79.69

The corner to sections 16, 17, 20, 21

Land mountainous

Soil 3rd rate

Timber of pine

Vegetation. grass & sage.

Township 23 N Range 11 E

Gila and Salt River Meridian.

Chains

North, between Sections 16 and 17.

Variation 151° 45' East.

Descend. *very gradually.*

40.00

Set a post 3 ft. long, 3 ins. diam. with marked stone 12 ins. in the ground, for $\frac{1}{2}$ Sec. Cor., marked $\frac{1}{2}$ S. on W. face, dug pits, 18 x 18 x 12 ins., N. and S. of post $5\frac{1}{2}$ ft. dist., and raised a mound of earth $1\frac{1}{2}$ ft. high, $3\frac{1}{2}$ ft. base around post.

from which

A Yellow Pine $\frac{1}{10}$ ins diam. bears N. $39\frac{1}{2}$ ° W. 5 $\frac{1}{4}$ lks. dist. marked $\frac{1}{2}$ S. B. T. No other trees within limits.

80.00

Set a post 4 ft. long, 4 ins. square, with marked stone 12 ins. in the ground, for Cor. to Secs, 8, 9, 10 & 17 marked T $\frac{23}{2}$ N. S. 9, on N, E, R, 11 E, S. 10 on S, E, S, 17 on S, W, and S, 8 on N, W, face with 11 notches on S, and 11 notches on E, edges, dug pits 18 x 18 x 12 ins, in each Sec., $5\frac{1}{2}$ ft. dist., and raised a mound of earth 2 ft, high, $4\frac{1}{2}$ ft, base around post.

from which

A Yellow Pine $\frac{1}{10}$ ins diam. bears N. 50 ° W. 5 $\frac{1}{4}$ lks. dist. marked T $\frac{23}{2}$ N. R. 11 E. S., 8 B. T.

A Yellow Pine $\frac{30}{100}$ ins diam. bears $15\frac{1}{2}$ ° W. 1.15 lks. dist. marked T $\frac{23}{2}$ N. R. 11 E. S., 17 B. T.

A Yellow Pine $\frac{32}{100}$ ins diam. bears 40 ° E. .9 lks. dist. marked T $\frac{23}{2}$ N. R. 10 E. S., 10 B. T.

Land rolling. No other trees within limits.

Soil 3^{rd} rate

Timber of *pine*.

Vegetation. *grass & sage*

Township

23

N

Range

11

E

Gila and Salt River Meridian.

Chains

East, on a random line between Sections 9 and 16.

Variation $14^{\circ} 31' 5''$

East.

Ascend. gradually.

40.00

Set temporary $\frac{1}{2}$ Sec. Cor.

41.00

North edge of bridge

70.00

Cross Road, bears $N. 50^{\circ} W.$ & $S. 50^{\circ} E.$

80.11

Intersect N. & S. line, 22 lks. N. of cor. to secs.

9, 10, 15 & 16 from which corner, I run

 $N. 50^{\circ} 51' W.$ on a true line between sections 9 & 16Variation $14^{\circ} 31' 5''$ East

40.05

Set a post 3 ft. long, 3 ins. diam. with marked stone

12 ins. in the ground, for $\frac{1}{2}$ Sec. Cor., marked $\frac{1}{2}$ S. on

N. face, dug pits, 18 x 18 x 12 ins., E. and W. of

post $5\frac{1}{2}$ ft. dist., and raised a mound of earth $1\frac{1}{2}$ ft.high, $3\frac{1}{2}$ ft. base around post. from whichA Yellow Pine 24 ins diam. bears $N. 10\frac{1}{2}^{\circ} E.$ 24 lks. dist.marked $\frac{1}{2}$ S. B. T.

No other trees within limits.

80.11

The corner to sections 8, 9, 10 & 17

Land rolling.

Soil 3° rate

Timber of pine.

Vegetation grass & sage.

Township 23 N Range 4 E

Gila and Salt River Meridian.

Chains

North, between Sections 8 and 9.

Variation

 $14^{\circ} 45'$

East.

Over rolling land.

26.80

Cross Road, bears, $N. 80^{\circ} W.$ & $S. 80^{\circ} E.$

40.00

Set a post 3 ft. long, 3 ins. diam. with marked stone
12 ins. in the ground, for $\frac{1}{4}$ Sec. Cor., marked $\frac{1}{4}$ S. on
W. face, dug pits, 18 x 18 x 12 ins., N. and S. of
post $5\frac{1}{2}$ ft. dist., and raised a mound of earth $1\frac{1}{2}$ ft.
high, $3\frac{1}{2}$ ft. base around post. from which

A Yellow Pine 20 ins diam. bears $S. 55^{\circ} W.$ 23 lks. dist.
marked $\frac{1}{4}$ S. B. T. No other trees within limits.

80.00

Set a post 4 ft. long, 4 ins. square, with mark in the
12 ins. in the ground, for Cor. to Secs. 4, 5, 8 & 9.
marked T. 23 N. S. 4, on N, E, R, 4 E. S. 9
on S, E, S, 8 on S, W, and S, 5 on N. W. face
with 5 notches on S, and 1 notch on E, edges,
dug pits 18 x 18 x 12 ins. in each Sec., $5\frac{1}{2}$ ft. dist.,
and raised a mound of earth 2 ft. high, $4\frac{1}{2}$ ft. base
around post.

from which

A Yellow Pine 58 ins diam. bears $N. 44\frac{1}{4}^{\circ} W.$ 3.08 lks. dist.
marked T. 23 N. R. 4 E. S., 5 B. T.

No other trees within limits.

Land rolling.

Soil 3rd rate

Timber of pine.

Vegetation. grass & sage.

Township 23 N Range 11 E

Gila and Salt River Meridian.

Chains

East, on a random line between Sections 4 and 9.

Variation $14^{\circ} 45'$ East.

Ascend.

12.00 Top of Spur, bears N.W. & S.E. and descend.

40.00 Set temporary $\frac{1}{4}$ Sec. Cor.

48.00 Cross Wash, 20 lks. wide, Course N. 20° W and ascend.

79.84 Intersect N. & S. line, 11' lks. S. of cor. to secs.

3.4. 9 & 10 from which corner, I run

S. 90° 55' W. on a true line between sections 4 & 9

Variation $14^{\circ} 45'$ East

39.92 Set a post 3 ft. long, 3 ins. diam. with marked stone

12 ins. in the ground, for $\frac{1}{4}$ Sec. Cor., marked $\frac{1}{4}$ S. on

N. face, dug pits, 18 x 18 x 12 ins., E. and W. of

post $5\frac{1}{2}$ ft. dist., and raised a mound of earth $1\frac{1}{2}$ ft.high, $3\frac{1}{2}$ ft. base around post.

from which

a Yellow Pine 30 ins diam. bears S. 40° W. 120 lks. dist.

marked $\frac{1}{4}$ S. B. T. No other trees within limits.

79.84 The corner to sections 4, 5, 8 & 9

Land mountainous

Soil 3rd rate

Timber of pine.

Vegetation. grass & sage.

Township 23 N Range 4 E

Gila and Salt River Meridian.

Chains ^X

North, on a random line between Sections 4 and 5.

Variation $14^{\circ} 45'$ East.

Ascend.

16.00 Top of Spur, bears $N 20^{\circ} W$, $S 20^{\circ} E$ and descend.40.00 Set temporary $\frac{1}{2}$ Sec. Cor.

80.19 Intersect N. B. of Tp. 7 lks. W. of cor. to secs.

4. 5. 32 & 33 ^{previously set by me.} from which corner, I run

0.3' W. on a true line, between sections 4 & 5

Variation $11^{\circ} 45'$ East.40.19 Set a sand stone 20 x 10 x 14 ins., 15 ins. in the ground, for $\frac{1}{2}$ Sec. Cor., marked $\frac{1}{2}$ on W. face, and raised a mound of stone alongside. Pits impracticable.

from which

A Yellow Pine 11 ins diam. bears $N 37^{\circ} E$. 1.76 lks. dist. marked $\frac{1}{2}$ S. B. T. No other trees within limits.

80.19 The corner to sections 4, 5, 8 & 9

Land mountainous

Soil 3rd rate

Timber of pine.

X Vegetation. grass & sage.

I carefully examined the adjustments of my solar compass to-day, particularly the latitude and bearing apparatus, and found them correct.

S. O. Cape, Compassman Feb. 13. 1883

Township 23 N Range 4 EGila and Salt River Meridian.

Chains

From the Corner to Sections 5, 6, 31 & 32 on the South boundary *of 7/8*
previously set by me.

Run North, between Sections 31 and 32.

Variation 41° 45' East.

Descend.

40.00 Set a sand stone 10 x 12 x 5 ins., 10
ins. in the ground, for $\frac{1}{2}$ Sec. Cor., marked $\frac{1}{4}$ on W.

face, and raised a mound of stone alongside. Pits

impracticable.

from which

A Yellow Pine 15 ins diam. bears N. 04° E. 1.0 kls. dist.
marked $\frac{1}{4}$ S. B. T. No other trees within limits.41.00 Cross Ravine, Course S. 30° W. and ascend80.00 Set a sand stone 18 x 14 x 6 ins. 12 ins. in
the ground for Cor. to Secs. 21, 30, 31 & 32 marked
with 1 notch on S. and 5 notches on E. edges and
raised a mound of stone alongside. Pits impracticable.

from which

A Yellow Pine 20 ins diam. bears N. 65° W. 80 kls. dist.
marked T. 23 N. R. 4 E. S., 30 B. T.A Yellow Pine 10 ins diam. bears S. 40° E. 90 kls. dist.
marked T. 23 N. R. 4 E. S., 32 B. T.

No other trees within limits.

Land mountainous

Soil 3rd rateTimber of pine.Vegetation. grass & sage.

Township 23 N Range 11 E

Gila and Salt River Meridian.

Chains

East, on a random line between Sections 29 and 32.

Variation $14^{\circ} 45'$ East.

Descend.

28.00 Head of Ravine, Course S. W. and ascend

40.00 Set temporary $\frac{1}{2}$ Sec. Cor.

68.00 Top of Spur, bears N. 10° W. & S. 10° E. and descend.

80.45 Intersect N. & S. line, 38 lks. S. of cor. to secs.

29, 29, 32 & 33 from which corner, I run

S. 89° 44' W. on a true line between sections 29 & 32

Variation $14^{\circ} 45'$ East

40.22 Set a sand stone 10 x 12 x 8 ins., 10

ins. in the ground, for $\frac{1}{2}$ Sec. Cor., marked $\frac{1}{2}$ on N.

face, and raised a mound of stone alongside. Pits

impracticable.

from which

A Yellow Pine 22 ins diam. bears N. 65° E. 68 lks. dist.

marked $\frac{1}{2}$ S. B. T. No other trees within limits.

80.45 The corner to sections 29, 30, 31 & 32

Land mountainous

Soil 3rd rate

Timber of pine.

Vegetation. grass & sage.

W. R. Fitzgerald Feb. 14. 1883

Township 23 N. Range 11 E.

Gila and Salt River Meridian.

Chains

West, on a random line between Sections 30 and 31.

Variation $14^{\circ} 45'$ East.*Descend.*40.00 Set temporary $\frac{1}{4}$ Sec. Cor.60.00 Cross Ravine, Course *S. U.* and ascend78.61 Intersect *W. B.* of T_{p.} 12 *N.* of cor. to secs.25.30, 31 & 30 ^{previously set by me.} from which corner, I run*N.* $89^{\circ} 55'$ *E.* on a true line, between sections 30 & 31Variation $14^{\circ} 45'$ East.38.61 Set a *limestone* stone 10 x 12 x 8 ins., 10ins. in the ground, for $\frac{1}{4}$ Sec. Cor., marked $\frac{1}{4}$ on *N.**p. r.*, and raised a mound of stone alongside. Pits

impracticable.

from which

A Yellow Pine 14 ins diam. bears *N. 64° E.* 68 lks. dist.marked $\frac{1}{4}$ S. B. T. No other trees within limits.

78.61 The corner to sections 29. 30. 31 & 32

Land mountainous

Soil 3rd rateTimber of *pine.*Vegetation. *grass & sage.**S. O. Calk, Compassman Feb. 14. 1883*

Township 23 N. Range 11 E.Gila and Salt River Meridian.

Chains

North, between Sections 29 and 30.

Variation $11^{\circ} 45'$ East.

Descend.

40.00

Set a Sand stone $70 \times 12 \times 4$ ins., 10 ins. in the ground, for $\frac{1}{4}$ Sec. Cor., marked $\frac{1}{4}$ on W.

face, and raised a mound of stone alongside. Pits impracticable.

from which

A Yellow Pine 16 ins diam. bears $N. 36^{\circ} E.$ 67 lks. dist. marked $\frac{1}{4}$ S. B. T. No other trees within limits.

42.00

Cross Ravine, Course $S. W.$ and ascend

76.00

Top of Spur, bears $N. E. \& S. W.$ and descend.

80.00

Set a Sand stone $10 \times 12 \times 5$ ins. 10 ins. in the ground for Cor. to Secs. 19, 20, 29 & 30 marked with 2 notches on S. and 5 notches on E. edges and raised a mound of stone alongside. Pits impracticable.A Yellow Pine 14 ins diam. bears $N. 36^{\circ} E.$ ^{from which} 95 lks. dist. marked T. 23 N. R. 1 E. S., 30 B. T.A Yellow Pine 18 ins diam. bears $N. 40^{\circ} W.$ 60 lks. dist. marked T. 23 N. R. 1 E. S., 19 B. T.

No other trees within limits.

Land mountainous

Soil 3rd rate

Timber of pine.

Vegetation. Grass & sage.

Township 23 N

Range 11 E

Gila and Salt River Meridian.

Chains

East, on a random line between Sections 20 and 29.

Variation $11^{\circ} 45'$ East.

Ascend. abruptly.

30.00 Top of Ridge, bears $N. 10^{\circ} W.$ & $S. 10^{\circ} E.$ and descend.40.00 Set temporary $\frac{1}{2}$ Sec. Cor.80.07 Intersect N. & S. line, 19 $\frac{1}{2}$ lks. S of cor. to sec.

20, 21, 28 & 29 from which corner, I run

 $S. 89^{\circ} 52' W.$ in a true line between sections 20 & 29Variation $14^{\circ} 45'$ East40.03 Set a *square* stone 12 x 3 x 6 ins., 8ins. in the ground, for $\frac{1}{2}$ Sec. Cor., marked $\frac{1}{2}$ on N.

face, and raised a mound of stone alongside. Pits

impracticable.

from which

A Yellow Pine 10 ins diam. bears $S. 64^{\circ} W.$ 110 lks. dist.marked $\frac{1}{2}$ S. B. T.

No other trees within limits.

80.07 The corner to sections 19, 20, 29 & 30

Land mountainous

Soil 3^{rd} rate

Timber of fir & pine.

Vegetation, grass & sage.

W. P. Fitzgerald Feb. 14. 1883

Township

23

N

Range

11 E

Gila and Salt River Meridian.

Chains

West, on a random line between Sections 19 and 30.

Variation

14° 45'

East.

Descend.

40.00

Set temporary $\frac{1}{4}$ Sec. Cor.

78.40

Intersect W. B. of Tp. 7 1/2 m. S. of cor. to sec.
previously set by me.

19, 24, 25 & 30 from which corner, I run

189° 57' C. on a true line, between sections 19 & 30

Variation

14° 45'

East.

35.46

Set a sand stone 14 x 12 x 8 ins., 10
ins. in the ground, for $\frac{1}{4}$ Sec. Cor., marked $\frac{1}{4}$ on CN
face, and raised a mound of stone alongside. Pits
impracticable. from whichA Yellow Pine 30 ins diam. bears N. 38° W. 90 m. dist.
marked $\frac{1}{4}$ S. B. T. No other trees within limits.

78.40

The corner to sections 19, 20, 29 & 30

Land mountainous

Soil 3rd rate

Timber of pine.

Vegetation grass & sage.

S. C. Oak Comptroler Feb. 14. 1883

Township 23 N. Range 11 E.Gila and Salt River Meridian.

Chains

North, between Sections 19 and 20.

Variation 14° 45' East.

Ascend.

40.00

Set a Sand stone 15 x 10 x 8 ins., 10 ins. in the ground, for $\frac{1}{4}$ Sec. Cor., marked $\frac{1}{4}$ on W. face, and raised a mound of stone alongside. Pits impracticable.

from which

A Yellow Pine 20 ins diam. bears S. 30° E. 24 lks. dist. marked $\frac{1}{4}$ S. B. T. No other trees within limits.

80.00

Set a Sand stone 20 x 10 x 5 ins. 15 ins. in the ground for Cor. to Secs. 17. 18. 19 & 20 marked with 3 notches on S. and 5 notches on E. edges and raised a mound of stone alongside. Pits impracticable.

from which

A Yellow Pine 30 ins diam. bears N. 30° E. 47 lks. dist. marked T. 23 N. R. 4 E. S., 17 B. T.

A Yellow Pine 20 ins diam. bears S. 20° E. 61 lks. dist. marked T. 23 N. R. 4 E. S., 20 B. T.

A Yellow Pine 30 ins diam. bears S. 44½° W. 74 lks. dist. marked T. 23 N. R. 4 E. S., 19 B. T.

No other trees within limits.

Land mountainous,

Soil 3rd rateTimber of pine.Vegetation. grass & sage.

Township 23 N Range 4 E

Gila and Salt River Meridian.

Chains East, on a random line between Sections 17 and 20. Variation 14° 45' East.

Ascend.

10.00 Top of Ridge, bears N. 20° W. 250' and descend.

40.00 Set temporary 1/4 Sec. Cor.

50.00 Cross Ravine, Course N and ascend

80.13 Intersect N. & S. line, 24 lks. N of cor. to secs.

10.1720-21 from which corner, I run

N. 89° 50' W. on a true line between sections 17 & 20

Variation 121° 45' East

40.00 Set a small stone 20 x 9 x 4 ins., 1/5

ins. in the ground, for 1/4 Sec. Cor., marked 1/4 on N.

face, and raised a mound of stone alongside. Pits

impracticable. from which

A Yellow Pine 20 ins diam. bears S. 10° W. 10 lks. dist.

marked 1/4 S. B. T. No other trees within limits.

90.13 The corner to sections 17. 18. 19 & 20

Land mountainous

Soil rate

Timber of fern

Vegetation grass & sage.

W. R. Fitzgerald Feb. 14. 1858

Township 23 N. Range 4 E.

Gila and Salt River Meridian.

Chains

West, on a random line between Sections 18 and 19.

Variation $14^{\circ} 15'$ East.

Descend.

23.00 Cross Wash, 20 lks. wide, Course $N. 20^{\circ} W.$ and ascend.40.00 Set temporary $\frac{1}{2}$ Sec. Cor.78.12 Intersect $N. B.$ of Tp. 20 lks. S. of cor. to secs.
previously set by me.
13. 18. 19 & 20 from which corner, I run $S. 84^{\circ} 51' E$ on a true line, between sections 18 & 19
Variation $14^{\circ} 15'$ East.25.12 Set a post 3 ft. long. 3 ins. diam. with marked stone
12 ins. in the ground, for $\frac{1}{2}$ Sec. Cor., marked $\frac{1}{2}$ S. on
N. face, dug pits, 18 x 18 x 12 ins., E. and W. of
post $5\frac{1}{2}$ ft. dist., and raised a mound of earth $1\frac{1}{2}$ ft.
high, $3\frac{1}{2}$ ft. base around post. from which
A Yellow Pine 20 ins diam. bears $N. 30^{\circ} E.$ 1.09 lks. dist.
marked $\frac{1}{2}$ S. B. T. No other trees within limits.Top of Ridge, bears $N. 15^{\circ} W.$ & $S. 15^{\circ} E.$ and descend.

78.12 The corner to sections 17. 18. 19 & 20

Land mountainous

Soil 3rd rate

Timber of pine

Vegetation. grass & sage.

S. C. Calk, Compassman Feb. 14. 1883

Township 13 N Range 4 E

Gila and Salt River Meridian.

Chains

North, between Sections 17 and 18.

Variation

$11^{\circ} 10'$

East.

Ascend.

16.00

Top of Ridge, bears $N. 44^{\circ} E.$ and descend.

40.00

Set a post 3 ft. long, 3 ins. diam. with marked stone 12 ins. in the ground, for $\frac{1}{2}$ Sec. Cor., marked $\frac{1}{2}$ S. on W. face, dug pits, 18 x 18 x 12 ins., N. and S. of post $5\frac{1}{2}$ ft. dist., and raised a mound of earth $1\frac{1}{2}$ ft. high, $3\frac{1}{2}$ ft. base around post.

from which

A Yellow Pine 20 ins diam. bears $N. 107^{\circ} W.$ 29 lks. dist. marked $\frac{1}{2}$ S. B. T. No other trees within limits.

80.00

Set a post 4 ft. long, 4 ins. square, with marked stone 12 ins. in the ground, for Cor. to Secs, $\frac{1}{2}$ S. 17° & 18 marked T. 23 N. S. $\frac{1}{2}$, on N. E. R. 4° E. S. 17° on S. E. S. 18° on S. W. and S. 17° on N. W. face with 4 notches on S, and 5 notches on E, edges, dug pits 18 x 18 x 12 ins, in each Sec., $5\frac{1}{2}$ ft. dist., and raised a mound of earth 2 ft. high, $4\frac{1}{2}$ ft. base around post.

from which

A Yellow Pine 30 ins diam. bears $N. 44^{\circ} E.$ 12° 1.39 lks. dist. marked T. 23 N. R. 4 E. S., B. T.
 A Yellow Pine 28 ins diam. bears $N. 77^{\circ} W.$ 1.10 lks. dist. marked T. 23 N. R. 4 E. S., B. T.
 A Yellow Pine 30 ins diam. bears $S. 37^{\circ} E.$ 33 lks. dist. marked T. 23 N. R. 4 E. S., B. T.
 No other trees within limits.

Land mountainous

Soil 3rd rate

Timber of pine.

Vegetation. grass & sage.

Township 23 N Range 11 E

Gila and Salt River Meridian.

Chains

East, on a random line between Sections 8 and 17.

Variation $14^{\circ} 45'$ East.

Descend.

10.00 Cross Water Course N. 10° E and ascend

19.00 Top of Spur, bears N. 15° W. & S. 15° E and descend.

40.00 Set temporary $\frac{1}{4}$ Sec. Cor.

54.00 Cross low Sag and ascend.

A Spring, bears 3.00 chs. S. of this point.

50.54 Intersect N. & S. line, 63 lks. N. of cor. to secs.

8, 9, 16 & 17 from which corner, I run

N. 89° 33' W. on a true line between sections 8 & 17

Variation $14^{\circ} 45'$ East

40.27 Set a sand stone 16 x 16 x 5 ins., 10

ins. in the ground, for $\frac{1}{4}$ Sec. Cor., marked $\frac{1}{4}$ on N.

face, and raised a mound of stone alongside. Pits

impracticable.

from which

A Yellow Pine 24 ins diam. bears S. 50° E. 65 lks. dist.

marked $\frac{1}{4}$ S. B. T.

No other trees within limits.

80.54 The corner to sections 7, 8, 17 & 18

Land mountainous

Soil 3rd rate

Timber of pine.

Vegetation. grass & sage.

W. R. Fitzgerald Feb. 14, 1883

Township 23 N Range 11 E

Gila and Salt River Meridian.

Chains

West, on a random line between Sections 7 and 18.

Variation 14° 45' East.

Ascend. along S. slope of Butte.

40.00 Set temporary $\frac{1}{4}$ Sec. Cor.

50.00 Top of Ridge, bears N. 15° W. & S. 10° E. and descend.

78.58 Intersect W. B. of Tp. 14 lks. N. of cor. to sec. previously set by me.

7.12 13 & 15 from which corner, I run

N. 89° 54' E. on a true line, between sections 7 & 15

Variation 14° 45' East.

35.58 Set a sand stone 10 x 9 x 5 ins., 10 ins. in the ground, for $\frac{1}{4}$ Sec. Cor., marked $\frac{1}{4}$ on N.

face, and raised a mound of stone alongside. Pits impracticable.

from which

A Yellow Pine 40 ins diam. bears S. 29 $\frac{1}{2}$ ° E. 82 lks. dist. marked $\frac{1}{4}$ S. B. T. No other trees within limits.

78.58 The corner to sections 7, 8, 17 & 15

Land mountainous

Soil 3rd rate =

Timber of pine.

Vegetation. grass & sage.

S. C. Cope, Compassman Feb. 14, 1883

Township 23 N Range 4 E

Gila and Salt River Meridian.

Chains

North, between Sections 7 and 8.

Variation $14^{\circ} 40'$ East.

Along S. slope of Ridge.

40.00

Set a post 3 ft. long, 3 ins. diam 24 ins. in the ground, for $\frac{1}{4}$ Sec. Cor., marked $\frac{1}{4}$ S. on W. face; from which1 Yellow Pine 24 ins diam. bears $N. 15^{\circ} E$, 25 lks. dist. marked $\frac{1}{4}$ S. B. T.2 Yellow Pine 26 ins diam. bears $S. 30^{\circ} W$, 31 lks. dist. marked $\frac{1}{4}$ S. B. T.

77.00

Cross Road, bears, $N. W. \text{ \& } S. E.$

X 80.00

Set a post 4 ft. long, 4 ins. square, with marked stone 12 ins. in the ground, for Cor. to Secs. 5, 6, 7 & 8 marked T. 23 N. S. 5, on N, E, R. H. E. S. 5 on S, E, S, 7 on S, W, and S, 6 on N. W. face with 5 notches on S, and 5 notches on E, edges, dug pits 18 x 18 x 12 ins, in each Sec., $5\frac{1}{2}$ ft. dist., and raised a mound of earth 2 ft. high, $4\frac{1}{2}$ ft. base around post.

from which

1 Yellow Pine 40 ins diam. bears $S. 10^{\circ} W$, 29 lks. dist. marked T. 23 N. R. H. E. S., 7 B. T.2 Yellow Pine 38 ins diam. bears $S. 15\frac{1}{4}^{\circ} E$, 47 lks. dist. marked T. 23 N. R. H. E. S., 8 B. T.

No other trees within limits.

Land mountainous

Soil 3rd rate

Timber of pine.

Vegetation. grass & sage.

Township

23

N

Range

11 E

Gila and Salt River Meridian.

Chains

East, on a random line between Sections 5 and 8.

Variation

14° 45'

East.

*Over rolling land.*40.00 Set temporary $\frac{1}{4}$ Sec. Cor.

50.00 Onose Wash 50. lks. wide. Corner N.

80.25 Intersect N. & S. line. 15 lks. N. of cor. to secs.

4.5. 8 & 9 from which corner, I run

N. 89° 52' W. on a true line between sections 5 & 8

Variation

14° 45'

East

40.14

Set a sand stone 15 x 12 x 5 ins., 10
ins. in the ground, for $\frac{1}{4}$ Sec. Cor., marked $\frac{1}{4}$ on N.
face, and raised a mound of stone alongside. Pits*impracticable.*

80.28

The corner to sections 5, 6, 7 & 8

Land rolling.

Soil 3rd rate

Timber of pine.

Vegetation. grass & sage.

I carefully examined the adjustments of the solar
compass to-day, particularly the latitude and meas-
uring apparatus, and found them correct.

W. R. Fitzgerald Oct. 14. 1883

Township 23 N Range 4 E

Gila and Salt River Meridian.

Chains

West, on a random line between Sections 6 and 7.

Variation $14^{\circ} 45'$ East.

Ascend. gradually.

2.00 Cross Road, bears N.W. & S.E.

40.00 Set temporary $\frac{1}{4}$ Sec. Cor.

60.00 Top of Ridge, bears N.E. & S.W. and descend.

78.37 Intersect W.B. of Twp. 32 lks. S. of cor. to secs.

previously set by me.
1.6. 7 & 12 from which corner, I runS. $89^{\circ} 46'$ on a true line, between sections 6 & 7Variation $14^{\circ} 45'$ East.38.39 Set a post 3 ft. long, 3 ins. diam 24 ins. in the ground,
for $\frac{1}{4}$ Sec. Cor., marked $\frac{1}{4}$ S. on N. face; from whichA Yellow Pine 20 ins diam. bears N. $39\frac{1}{4}^{\circ}$ E. 17 lks. dist.
marked $\frac{1}{4}$ S. B. T.A Yellow Pine 22 ins diam. bears S. $5\frac{1}{4}^{\circ}$ E. 10 lks. dist.
marked $\frac{1}{4}$ S. B. T.

78.39 The corner to sections 5, 6, 7 & 8

Land mountainous

Soil 3rd rate

Timber of pine.

Vegetation. grass & sage.

Township 23

Range 11

Gila and Salt River Meridian.

Chains

North, on a random line between Sections 5 and 6.

Variation

14° 45'

East.

Ascend.

40.00 Set temporary $\frac{1}{4}$ Sec. Cor.80.42 Intersect N.B. of Tp. 15 lks. W. of cor. to secs.
previously set by me.

S. C. 31 & 32 from which corner, I run

S. 8' W. on a true line, between sections 5 & 6

Variation 14° 45' East.

40.42 Set a Sand stone 15 x 16 x 5 ins., 10
ins. in the ground, for $\frac{1}{4}$ Sec. Cor., marked $\frac{1}{2}$ on W.
face, and raised a mound of stone alongside. Pits

impracticable. from which

A Yellow Pine 14 ins diam. bears N. 25° E 70 lks. dist.
marked $\frac{1}{4}$ S. B. T. No other trees within limits.

80.42 The corner to sections 5, 6, 7 & 8

Land mountainous

Soil 3rd rate

Timber of pine.

Vegetation. grass & sage.

I carefully examined the adjustments of my solar
compass to-day, particularly the latitude and re-
solving apparatus, and found them correct.

S. O. Bapp Compassman Feb. 14, 1883

GENERAL DESCRIPTION.

The land in this Township
is generally mountainous.

See 3rd note.

Vegetation consists of grass &
sage.

Soil of Yellow Pine.

The land in this Township is
well adapted to grazing purposes.

Lyon's field in the N.W. and
S.W. $\frac{1}{4}$ of Sec. 27, and Ranch in
N.W. $\frac{1}{4}$ of S.E. $\frac{1}{4}$ of Sec. 22.

For Final Notes see Book No. 144

U. S. Surveyor General's Office,

Tucson, Arizona, *Feb. 25,* 1884

The foregoing Field Notes of the Survey of the

*Subdivision Lines of
Township 23 North
Range 4 East*

Of the Gila and Salt River Base and Meridian, Arizona, execu-

ted by

M. R. Fitzgerald

Deputy Surveyor, under his contract of the

27th

day of

July

, 1882, having been

critically examined and the necessary corrections and explana-

tions made, the said Field Notes and the surveys they describe

are hereby approved

Royce Johnson
Surveyor General.