

BOOK 647

647

647

F I E L D        N O T E S  
OF THE SURVEY OF THE  
SUBDIVISION LINES  
OF

Township 6 South, Range 5 East.

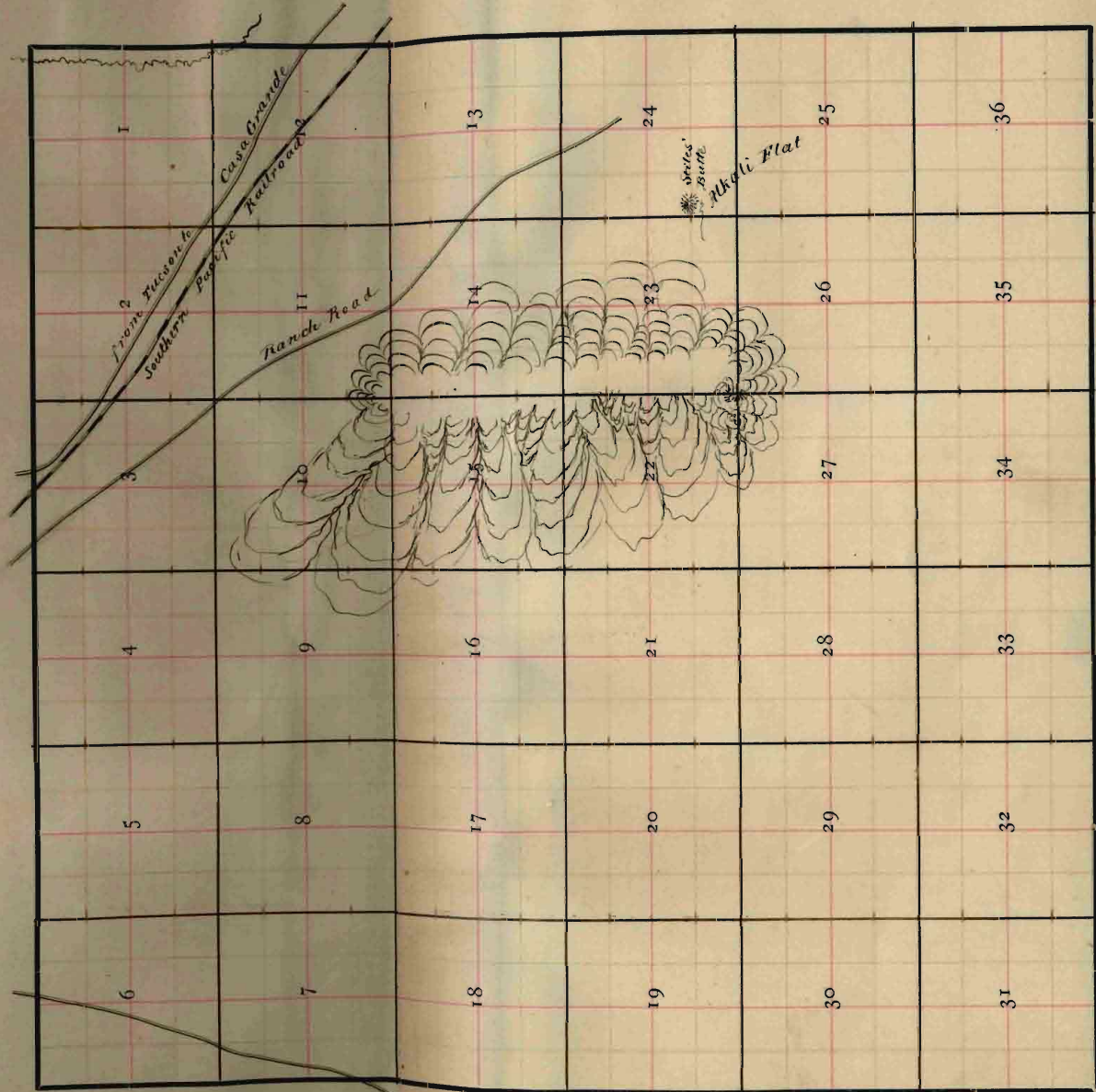
Gila and Salt River Base and  
Meridian,

ARIZONA.

By R. C. Powers, D. S., under  
Contract dated July 20, 1885.  
Survey commenced Oct. 25, 1887.  
Survey completed Nov. 2, 1887.

page 1

Township No. 7 South Range No. 6 East Gila & Salt River Meridian



BOOK 647

1

Township Plot.

Meridian Line

East  
Car

eye

87  
87

5 East  
Meridian

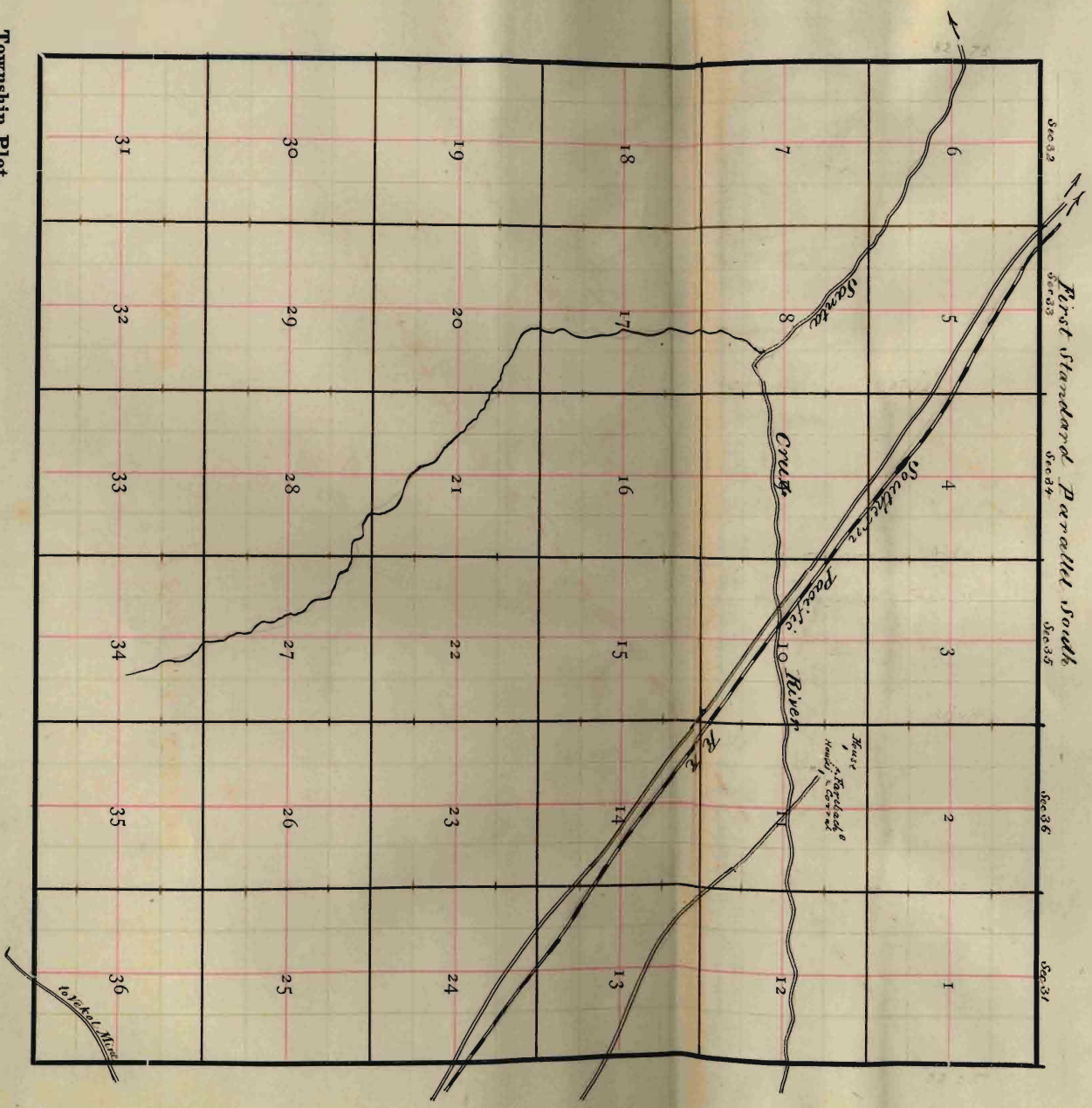
era  
Meridian

1887  
1887

PAYOT, UPHAM & Co., Stationers and Printers, Drawing Materials, etc., 324 Sansome St., S.F.

page 1A

Township No. 6 South Range No. 5 East Gila & Salt River Meridian



Township Plot.  
Meridian Line,

page 1 B

BOOK 647

No. 647

Field Notes  
of the Survey of the  
Subdivision Lines  
of  
Township No 6 South Range No 5 East  
of the  
Gila and Salt River Meridian  
of  
Arizona Territory  
as surveyed by  
R. C. Powers  
U. S. Deputy Surveyor  
Under his Contract No 41  
Dated July 20<sup>th</sup> 1883

Survey commenced Oct 25<sup>th</sup> 1887  
Survey completed Nov 2<sup>d</sup> 1887

BOOK 647

(4-674.)

Township 6 South Range 5 East.

Meridian Line,

6	87	5	66	4	50	3	35	2	18	1
86		54		64		49		34		17
7	83	8	63	9	48	10	32	11	16	12
82		81		61		47		30		14
18	79	17	60	16	45	15	29	14	12	13
78		77		59		44		27		11
19	75	20	58	21	42	22	26	23	9	24
74		73		56		41		25		8
30	71	29	55	28	40	27	23	26	6	25
70		69		54		38		22		5
31	68	32	52	33	37	34	21	35	4	36

# Subdivisions T. 6 S. R. 5 E.

Chain

Preliminary to commencing this survey I ran North on a black line on the E. boundary of Sec 36 and at 39.97 chs found the  $\frac{1}{4}$  sec cor. and at 79.99 chs found the sec cor. I also ran West on the black line on the South boundary of Sec 36 and at 40.01 chs found the  $\frac{1}{4}$  sec cor. and at 80.00 chs found the sec cor. My compass will therefore run the same line as the exterior boundaries and the chaining practically agrees. Survey commenced Oct 25<sup>th</sup> 1887 with a Burt's improved Solar Compass I commenced at the cor to Secs 1, 2, 35 & 36 on the S boundary of the Township previously established and described by me.

Subdivisions T6S. R5E. continued.

Chains

Thence I run

North bet Secs 35 & 36

Var.  $12^{\circ}50'$  E.

Over level ground

40.00

Set a mesquite post 4 ft long  
4 in square with marked  
stone 12 in in the ground for  
 $\frac{1}{4}$  Sec cor. marked  $\frac{1}{4}$  S on  
W face, dug pits 18 x 18 x 12 in  
N & S of post  $5\frac{1}{2}$  ft dia and  
raised a mound of earth  
 $1\frac{1}{2}$  ft high  $3\frac{1}{2}$  ft base around post

80.00

Set a mesquite post 4 ft long 4  
in square with marked stone  
12 in in the ground for cor to  
Secs 25-26-35 & 36 marked  
T6S. S. 25 on NE  
R5E. S. 36 on SE  
S. 35 on SW and

Subdivisions T6S. R5E. Continued

Chain

S 26 on N W face, with 1 notch  
on S and E edges, dug pits 18 x 18  
x 12 ins in each Sec 5 1/2 ft dist  
and raised a mound of earth  
2 ft high 4 1/2 ft base around post  
Land level

Soil yellow loam

Dense greasewood brush and  
mesquite entire mile

East on a random line bet Secs 25 & 36

Dir.  $12^{\circ}49'E$ .

Over level ground

40.00 Set temporary 1/4 Sec Cor.

80.00 Intersect E boundary of Tp 21 N  
S of the cor. to Secs 25. 30. 31 & 36  
previously established and  
described by me

Thence I run



## Subdivisions T. 6 S. R. 5 E. Continued

Chain

Meridian Line,

- S  $89^{\circ} 51' W.$  on a true line bet  
Secs 25 & 36 with same Var.
- 40.00 Set a mesquite post 3 ft long  
3 ins square with marked stone  
12 ins in the ground for  $\frac{1}{4}$  Sec  
Cor. marked  $\frac{1}{4}$  S. on N. face  
dry pits 18 x 18 x 12 ins E & W.  
of post  $5\frac{1}{2}$  ft dia and raised  
a mound of earth  $1\frac{1}{2}$  ft high  
 $3\frac{1}{2}$  ft base around post.
- 80.00 The cor to Secs 25. 26. 35 & 36  
Land level  
Soil barren 1<sup>st</sup> rate  
Dense brush entire mile.

North bet Secs 25 &amp; 26

Var.  $12^{\circ} 49' E.$ 

Occ. level ground

- 40.00 Set a mesquite post 3 ft long

## Subdivision T. 6 S. R. 5 E. Continued

Chain

3 in square with marked stone  
12 in in the ground for  $\frac{1}{4}$  Sec Cor.  
marked  $\frac{1}{4}$  S. on W face, dug pits  
18x18x12 in N & S. of post  $5\frac{1}{2}$  ft  
dirt and raised a mound of  
earth  $1\frac{1}{2}$  ft high  $5\frac{1}{2}$  ft base around  
post.

80.00

Set a mesquite post 4 ft long 4 in  
square with marked stone 12 in  
in the ground for cor. to Secs 23.  
24. 25 & 26 marked

T. 6 S. S. 24 on NE

R. 5 E. S. 25 on SE

S. 26 on SW and

S. 23 on NW faces, with 2  
notches on S and 1 notch on E edges  
dug pits 18x18x12 in in each  
Sec  $5\frac{1}{2}$  ft dirt and raised a  
mound of earth 2 ft high  $\frac{1}{2}$  ft

Subdivision T. 6 S. R. 5 E. continued

chain

base around post

Land level

Soil yellow loam 1<sup>st</sup> rate

Denae sedge brush and mesquite  
entire mile.

Cast on a random line bet Secs 24 & 25

Dec. 12° 48' E.

Over level ground

40.00 Set temporary  $\frac{1}{4}$  Sec cor.

79.78 Intersect E boundary of Tp. at  
the cor to Secs 19. 24. 25 & 30  
previously established and  
described by me

Thence I run

West on a true line bet Secs 24 &  
25 with same var.

39.89 Set a mesquite post 3 ft long 3 in  
square with marked stone 12 in

Subdivision T6 S. R5 E. continued

Chain

in the ground for  $\frac{1}{4}$  Sec corner.  
marked  $\frac{1}{4}$  S. on N face, dug pits  
18 x 18 x 12 ins E & W of post 5  $\frac{1}{2}$  ft  
dist and raised a mound of  
earth  $1\frac{1}{2}$  ft high  $3\frac{1}{2}$  ft base around  
post

79.78 The cor to Secs 23, 24, 25 & 26.

Land level

Soil yellow loam, 1<sup>st</sup> rate

Dense sage and mesquite brush  
and mesquite entire mile.

North bet Secs 23 & 24

Var  $12^{\circ}48' E$ .

Over level ground

40.00 Set a mesquite post 3 ft long 3 ins  
square with marked atom 12 ins  
in the ground for  $\frac{1}{4}$  Sec corner marked  
 $\frac{1}{4}$  S. on W face, dug pits 18 x 18

Subdivision T6S R5E. Continued

Chains

x 12 in N & S of post 5 1/2 ft dia and raised a mound of earth 1 1/2 ft high 3 1/2 ft base around post

80.00 Set a mesquite post 4 ft long 4 in square with marked stone 12 in in the ground for cor to Secs 13, 14, 23 & 24 marked T. 6 S. S. 13 on NE

R. 5 E. S. 24 on SE

S. 23 on SW and

S. 14 on NW faces, with 3 notches on S and 1 notch on E edges, dug pits 18 x 18 x 12 in in each sec 5 1/2 ft dia and raised a mound of earth 2 ft high 4 1/2 ft base around post.  
Land level

Soil yellow loam 1<sup>st</sup> rate

Dense sage and greasewood

## Subdivisions T6 S. R5 E. continued

Chains

entire mile

East on a random line bet Secs 13 & 24  
Var.  $12^{\circ} 48' E$ .

Over level ground

20.00 Cross way road bears  $N 54^{\circ} W$  and  
 $S 53^{\circ} E$ .

32.00 Cross Southern Pacific Railroad  
bears  $N 53^{\circ} 50' W$  and  $S 53^{\circ} 50' E$ .

40.00 Set temporary  $\frac{1}{4}$  Sec Cor.

80.00 Intersect E boundary of Township  
19 lks S of the Cor to Secs 13, 18, 19  
and 24 previously established  
and described by me

Thence I run

$S 89^{\circ} 52' W$  on a true line bet  
Secs 13 & 24 with same Var.

40.00 Set a mesquite post 3 ft long  
3 ins square with marked

Subdivision N.C.R. 56. Continued  
Chain

stone 12 ins in the ground for  
1/4 Sec or marked 1/4 Sec N face  
Dug pit 18x18x12 ins E & W of  
post 5 1/2 ft dist and raised  
a mound of earth 1 1/2 ft high  
3 1/2 ft base around post.

80.00 The cor to Secs 13, 14, 23 & 24  
Land level.

Soil yellow loam 1<sup>st</sup> rate

Dense greasewood brush and  
mesquite entire mile.

At 12 o'clock M. to day I found the  
latitude to be  $32^{\circ}42'N$ . and my  
Compass in perfect adjustment.

North bet Secs 13 & 14

Var  $12^{\circ}48'E$ .

Over level ground

Subdivisions T. 6 S. R. 5 E. Continued

Chains

- 14.00 Cross road bears  $N53^{\circ}00'W$  and  
 $S54^{\circ}00'E$ .
- 24.00 Cross railroad bears  $N53^{\circ}50'W$  and  
 $S53^{\circ}50'E$ .
- 40.00 Set a mesquite post 3 ft long 3 ins  
square with marked stone 12 ins  
in the ground for  $\frac{1}{4}$  Sec. 6 or marked  
 $\frac{1}{4}$  S. on W. face, dug pits 18 x 18 x 12  
ins N & S of post  $5\frac{1}{2}$  ft dia and  
raised a mound of earth  
12 ft high  $3\frac{1}{2}$  ft base around  
post.
- 80.00 Set a mesquite post 4 ft long 4  
ins square with marked stone  
12 ins in the ground for cor to Secs  
11. 12. 13 & 14 marked  
T. 6 S. S. 12 on NE  
R 5 E S. 13 on SE  
S. 14 on SW and



## Subdivision T. 6 S. R. 5 E. Continued

Chain

S. 11 on N.W. face with 4 notches  
on S and 1 notch on E edges, dug  
pits 18 X 18 X 12 ins in each sec  
5½ ft dia and raised a mound  
of earth 2 ft high 4½ ft base around  
post.

Land nearly level

Soil yellow loam 1<sup>st</sup> rate

Dense greasewood brush and  
mesquite entire mile

East on a random line bet secs 12 & 13

Var. 12° 47' E

Over level ground

7.14 Cross ranch road to Casa Grande  
course N.W. & S.E.

40.00 Set temporary ¼ Sec Cor.

80.14 Intersect the E boundary of the  
Township 26 lks S of the cor to secs

Subdivision T. S. R. 56. Continued

Chain

7.12.13 & 18 previously established and described by me

Hence I run

S 89° 49' W. on a true line to Seco 12 & 13 with same bar.

40.07 Set a mesquite post 2 ft long 3 ins square with marked stone 12 ins in the ground for  $\frac{1}{4}$  Sec cor. marked  $\frac{1}{4}$  S on N. face, dug pits 18 x 18 x 12 ins E & W. of post 5  $\frac{1}{2}$  ft diam and raised a mound of earth 1  $\frac{1}{2}$  ft high 3  $\frac{1}{2}$  ft base around post

80.14 The cor to Seco 11. 12. 13 & 14

Land level

Soil yellow loam 1<sup>st</sup> rate

Dense sage brush and mesquite entire mile.

Subdivision J. C. R. 5 E. Continued

Chario

North bet Secs 11 & 12

Var.  $12^{\circ}47'E$ .

Over nearly level ground

- 6.00 Cross ranch road bears N  $78^{\circ}$  & S  $8^{\circ}$  E
- 40.00 Set a mesquite post 3 ft long  
3 ins square with marked stone  
12 ins in the ground for  $\frac{1}{4}$  sec cor  
marked  $\frac{1}{4}$  S. on W. face, dug  
pits 18 x 18 x 12 ins N & S of post  
 $5\frac{1}{2}$  ft dist and raised a mound  
of earth  $1\frac{1}{2}$  ft high  $3\frac{1}{2}$  ft base  
around post.
- 43.00 Cross Santa Cruz river course W.
- 80.00 Set a mesquite post 4 ft long  
4 ins square with marked  
stone 12 ins in the ground  
for cor to Secs 1, 2, 11 & 12 marked  
J. C. R. S. 1 on N E  
R 5 E. S. 12 on S E

Subdivision T6. R5E. Continued

Chain

S. 11 on SW and

S 2 on NW face, with 5  
notches on S and 1 notch on E.  
Edges, dug pits 18x18x12 ins in  
each Sec 5 1/2 ft dia and raised  
a mound of earth 2 ft high  
4 1/2 ft base around post.

Land nearly level

Soil loam 1<sup>st</sup> rate

Dense brush entire mile

East on a random line bet Secs 18 & 12

Var. 12° 48' E.

Over level ground

40.00 Set temporary 1/4 Sec Cor.

80.18 Intersect E boundary of Tp.

42 lbs S. of the Cor to Secs 1-6-7  
& 12 previously established  
and described by me

## Subdivision T6 S. R 5 E. continued

Cham

Thence I run

$S 89^{\circ} 42' W.$  on a true line bet  
Secs 1 & 12. with same Var.

40.09 Set a mesquite post 3 ft long  
3 ins square with marked stone  
12 ins in the ground for  $\frac{1}{4}$  Sec  
Cor. marked  $\frac{1}{4}$  S. on N. face  
dig pits  $18 \times 18 \times 12$  ins E & W. of  
post  $5 \frac{1}{2}$  ft dist and raised  
a mound of earth  $1 \frac{1}{2}$  ft high  
 $3 \frac{1}{2}$  ft base around post.

80.18 The cor to Secs 1. 2. 11 & 12

Land level

Soil yellow loam 1<sup>st</sup> rate

Dense sage and mesquite  
entire mile.

North on a true line bet Secs 1 & 2  
Var.  $12^{\circ} 48' E$

Subdivisions T6 S. R. 5 E. Continued

Over level ground

40.00 Set a mesquite post 3 ft long 3 ins square with marked stone 12 ins in the ground for  $\frac{1}{4}$  sec cor. marked  $\frac{1}{4}$  S on W face, dug pits 18 X 15 X 12 ins N & S of post 5  $\frac{1}{2}$  ft dist and raised a mound of earth 1  $\frac{1}{2}$  ft high 3  $\frac{1}{2}$  ft base around post

82.30 Intersect First Standard Parallel South 8.7 lks E of the Standard corner to Secs 31 & 36 T<sub>5</sub> S. R's 5 & 6 E.

previously described by me

At this point I set a mesquite post 4 ft long 4 ins square with marked stone 12 ins in the ground for closing corner to Secs 1 & 2 marked

C.C. T6 S. R. 5 E on S

S 1 on E and

Subdivision T. 6 S. R. 5 E. continued  
 Chaus

S 2 on W. face, with 1 notch  
 on E and 5 notches on W edge  
 dry pits 18 x 18 x 12 ins. S. E. &  
 W. of post  $5\frac{1}{2}$  ft dist and  
 raised a mound of earth  
 2 ft high  $4\frac{1}{2}$  ft base around  
 post

Land level

Soil yellow loam 1<sup>st</sup> rate

Dense brush entire mile.

October 25<sup>th</sup> 1887

From the cor to Secs 2. 3. 34 & 35  
 on the S boundary of the T<sup>ps</sup>.  
 previously established and  
 described by me

Same

N. bet Secs 34 & 35

Var  $12^{\circ} 50' E$

Subdivision No. 1. R5C. Continued

- 40.00 <sup>Thais</sup> Over level ground  
 Set a mesquite post 3 ft long  
 3 in square with marked stem  
 12 in in the ground for  $\frac{1}{4}$  Sec  
 Cor. marked  $\frac{1}{4}$  S. on W. face, dug  
 pits 18 x 18 x 12 in N & S of post  $5\frac{1}{2}$   
 ft dia and raised a mound  
 of earth  $1\frac{1}{2}$  ft high  $3\frac{1}{2}$  ft base  
 around post
- 80.00 Set a mesquite post 4 ft long 4 in  
 square with marked stem 12 in in  
 the ground for cor to Secs 26, 27, 34  
 and 35 marked  
 T. 6 S. S. 26 on NE  
 R5C S. 35 on SE  
 S. 34 on SW and  
 S. 27 on NW faces, with  
 1 notch on S and 2 notches on E edges  
 dug pits 18 x 18 x 12 in in each



Subdivision T. S. R. 56. Continued

Chairs

Sec.  $5\frac{1}{2}$  ft dist and raised a mound  
of earth 2 ft high  $4\frac{1}{2}$  ft base around  
post.

Land level

Soil loam  $10^{\text{th}}$  rate

Dense sap break and mesquite  
entire mile.

East on a random line bet Secs 26 & 35.

Var.  $12^{\circ}49'6''$ .

40.00 Set temporary  $\frac{1}{4}$  Sec cor.

79.94 Intersect N & S line 15  $\frac{1}{2}$  ms S of  
the cor to Secs 25, 26, 35 and 36

Thence I run

$S 89^{\circ}54'$  W on a true line bet  
Secs 26 & 35 with same Var.

39.97 Set a mesquite post 3 ft long 3 in  
square with marked stone  
in the ground for  $\frac{1}{4}$  Sec cor.

Subdivisions T6 S. R56. Continued

Chains

marked  $\frac{1}{4}$  S on N. face, dug pits  
18 x 18 x 12 ins E & W. of post  $5\frac{1}{2}$  ft  
dist and raised a mound of  
earth  $1\frac{1}{2}$  ft high  $3\frac{1}{2}$  ft base around  
post.

79.94 The cor to Secs 25, 26, 35 and 36

Land level

Soil yellow loam 1<sup>st</sup> rate

Drain trench entire mile

North bet Secs 26 & 27

Var.  $12^{\circ} 49' E$

Over level ground.

40.00 Set a mesquite post 3 ft long  
3 ins square with marked stone  
12 ins with ground for  $\frac{1}{4}$  Sec  
Cor. marked  $\frac{1}{4}$  S on W. face,  
dug pits 18 x 18 x 12 ins N & S of  
stone  $5\frac{1}{2}$  ft dist. and raised

Subdivision T6 S. R5 E. Continued

Chains

a mound of earth  $1\frac{1}{2}$  ft high  
 $3\frac{1}{2}$  ft base around post.

80.00 Set a mesquite post 4 ft long  
 4 ins square with marked  
 stone 12 ins in the ground  
 for cor to Secs 22. 23. 26 & 27  
 marked

T. 6 S. S. 23 on NE

R. 5 E. S. 26 on SE

S. 27 on SW and

S. 22 on NW faces, with

2 notches on S and E edges  
 dry pits 18 x 18 x 12 ins in each  
 Sec  $5\frac{1}{2}$  ft dist and raised a  
 mound of earth 2 ft high  $4\frac{1}{2}$  ft  
 base around post.

Land level

Soil yellow loam 1<sup>st</sup> rate

Dense sage brush greasewood

Subdivision N.E. 1/4 Sec. 26 continued  
 and mesquite entire mile

East on a random line bet Secs 23 & 26  
 Var  $12^{\circ}48' E$ .

Over level ground.

40.00 Set temporary  $1/4$  Sec cor.  
 30.10 Intersect N & S line at the cor  
 to Secs 23. 24. 25 & 26

Thence run

West on a true line bet Secs 23 &  
 26 with same Var

40.05 Set a mesquite post 3 ft by 3 ins  
 square with marked at top 12 ins  
 in the ground for  $1/4$  Sec cor.  
 marked  $1/4$  S. on N. face, dig  
 pits 18 x 18 x 12 ins E & W. of post  
 5  $1/2$  ft dist and raised a  
 mound of earth 1  $1/2$  ft high 3  $1/2$  ft  
 base around post.

## Subdivision T6 S. R56. Continued

Main

80.10 The cor to Secs 22, 23, 26 &amp; 27

Land level

Soil loam 1<sup>st</sup> rate

Dense brush entire mile

North bet Secs 22 &amp; 23

Var. 12° 48' E.

Over level ground

40.00 Set a mesquite post 3 ft long  
3 ins square with marked  
stone 12 ins in the ground for  
1/4 Sec cor. marked 1/4 S. on W  
face dug pits 18 x 18 x 12 ins  
N & S of post 5 1/2 ft dist and  
raised a mound of earth 1 1/2  
ft high 3 1/2 ft base around post.

80.00 Set a mesquite post 4 ft long  
4 ins square with marked  
stone 12 ins in the ground

Subdivision T<sub>6</sub> S. R5E Continued

for cor to Secs 14, 15, 22 & 23  
marked

T. 6 S. 14 on NE

R5E. S. 23 on SE

S. 22 on SW and

S. 15 on NW faces with  
3 notches on S and 2 notches  
on E edges, dug pits 18 x 18 x 12 ins  
in each Sec 5½ ft dist and  
raised a mound of earth 2 ft  
high 4½ ft base around post  
Land level.

Soil yellow loam 1<sup>st</sup> rate  
Dense greasewood and mesquite  
brush entire mile.

East on a random line bet Secs 14 & 23

Crossed flagstone Var. 12° 48' E.

40.00 <sup>at temporary 1/4 Sec corner</sup>  
79.92 Intersect N & S line 2 1/2 lbs N of

Subdivisions T.S. R 5 E Continued  
chain

the cor to Secs 13. 14. 23. & 24

Thence S run

N 89° 51' W. on a true line bet  
Secs 14 & 23 with same Cor.

39.96 Set a mesquite post 3 ft long 3 ins  
square with marked stem 12 ins  
in the ground for  $\frac{1}{4}$  Sec cor.  
marked  $\frac{1}{4}$  S. on N. face, dug  
pits 18 x 18 x 12 ins E & W of post  
 $5\frac{1}{2}$  ft dist and raised a mound  
of earth  $1\frac{1}{2}$  ft high  $3\frac{1}{2}$  ft base  
around post.

79.92 The cor to Secs 14. 15. 22 & 23

Land level

Soil yellow loam 1<sup>st</sup> rate

Dense greasewood and mesquite  
break entire mile.

Subdivisions T. 6 S. R. 5 E. Continued  
 Chain

North bet Secs 14 & 15.

Var.  $12^{\circ} 48' E$ .

Over level ground

40.00 Set a mesquite post 3 ft long  
 3 ins square with marked atom  
 12 ins in the ground for  $\frac{1}{4}$  dec  
 Cor. marked  $\frac{1}{4}$  S on W face  
 dug pits 18 x 18 x 12 ins N & S of  
 post  $5\frac{1}{2}$  ft dist and raised a  
 mound of earth 1 $\frac{1}{2}$  ft high  $3\frac{1}{2}$  ft  
 base around post.  
 79.00 <sup>cross road course NW.</sup>

80.00 Set a mesquite post 4 ft long 2 ins  
 square with marked atom 12 ins  
 in the ground for cor to Secs  
 10. 11. 14 & 15 marked

T. 6 S. S. 14 on NE

R. 5 E. S. 14 on SE

S. 15 on SW and

S. 10 on NW faces, with



Subdivision T. 1. R. 5. E. Continued  
 Chairs

4 notches on S and 2 notches on  
 E edges, dug pits 18 x 18 x 12 ins. in  
 each sec. 5 1/2 ft dia and raised  
 a mound of earth 2 ft high  
 4 1/2 ft base around post.  
 Land level

Soil yellow loam 1<sup>st</sup> rate  
 Dense greasewood brush and  
 mesquite entire mile.

East on a random line bet Sec

11 & 14

Cor. 12° 47' E.

Over level ground

29.00 Cross Southern Pacific Railroad  
 bears N 53° 50' W and S 53° 50' E.

40.00 Set temporary 1/4 sec cor.

79.90 Intersect N & S line at the cor  
 to Sec 11. 12. 13 & 14

Subdivision N. S. R. 5 E. Continued  
 Charms

Thence I run

West on a true line between 11 & 14  
 with same var.

39.95 Set a mesquite post 3 ft long 3 in  
 square with marked stone 12 in  
 in the ground for "4" Sec Cor.  
 marked "4" on N. face dug  
 pits 18 x 18 x 12 in E & W of post  
 5 1/2 ft dist and raised a  
 mound of earth 1 1/2 ft high  
 3 1/2 ft base around post.

79.90 Thence to Secs 10, 11, 14 & 15

Land level

Soil yellow loam 1<sup>st</sup> rate

Dense brush entire mile.

Oct. 26<sup>th</sup> 1887

At 12 o'clock M. today I found  
 latitude to be  $32^{\circ}54'$  N. and  
 my Compass in good adjustment

Subdivision T6S R5E. Continued  
Chain

North bet Secs 10 & 11

Var.  $12^{\circ} 47' E$ .

Over nearly level ground.

2.00 Cross Southern Pacific Railroad  
bear at  $53^{\circ} 50' W$ .

40.00 Set a mesquite post 3 ft long 3 ins  
square with marked stone 12 ins  
in the ground for  $\frac{1}{4}$  sec cor. marked  
 $\frac{1}{4}$  down W. face, dig pits  $18 \times 18$   
 $\times 12$  ins N & S of post  $5\frac{1}{2}$  ft dist  
and raised a mound of earth  
 $1\frac{1}{2}$  ft high  $3\frac{1}{2}$  ft here around  
post.

From this cor. the ranch house  
and corral of Mr. Fairbach  
bear NE about 33 chs

41.00 Cross Santa Cruz river 80 yds  
wide course W.

80.00 Set a mesquite post 4 ft long

Subdivision T6S. R5E. Continued  
 Name

4 mi square with marked stone  
 12 mi the ground for cor to  
 Secs 2, 3, 10 & 11 marked  
 T6S. S. 2 on NE  
 R5E. S. 11 on SE  
 S. 10 on SW and  
 S. 3 on NW. faces, with  
 5 notches on S and 2 notches on  
 E edges, dry pits 18 x 18 x 12 mi in  
 each Sec  $5\frac{1}{2}$  ft dist and raised  
 a mound of earth 2 ft high  $4\frac{1}{2}$  ft  
 base around post

From this point the ranch house  
 of Mr Fareback bears SE. 10 chs.

Land level

Soil yellow loam 1<sup>st</sup> rate

Dense sage brush greasewood  
 and mesquite entire mile.

Subdivision T. S. R. S. C. Continued  
Chain

East on a random line hit Secs 2 & 11  
Bcr.  $12^{\circ} 47' E.$

Over level ground.

40.00 Set temporary  $\frac{1}{4}$  Sec cor.

79.88 Intersect N & S line 23 Ws S of the  
Cor. to Secs 1. 2. 11. & 12

Thence I run

$S 89^{\circ} 50' W.$  on a true line hit  
Secs 2 & 11 with same Bcr

39.94 Set a mesquite post 3 ft long 3 in  
square with marked etow 12 in  
in the ground for  $\frac{1}{4}$  Sec cor marked  
 $\frac{1}{4}$  S on N face, dig pits 18 x 18 x 12  
in E & W. of post  $5\frac{1}{2}$  ft dist and  
raised a mound of earth  $1\frac{1}{2}$  ft  
high  $3\frac{1}{2}$  ft base around post.

79.88 The cor to Secs 2. 3. 10 & 11

Land level

Soil sandy loam 1<sup>st</sup> rate

Subdivision T6S. R5E. Continued

Chains

Line back entire mile

North on a true line bet Secs 2 & 3  
 On  $12^{\circ}47' E.$

Over level ground

40.00

Set a mesquite post 3 ft long  
 3 ins square with marked stone  
 12 ins in the ground for  $\frac{1}{4}$  Sec  
 Cor. marked  $\frac{1}{4}$  S. on W. face  
 dug pits  $18 \times 18 \times 12$  ins N & S of  
 post  $5\frac{1}{2}$  ft dist and raised a  
 mound of earth  $1\frac{1}{2}$  ft high  $3\frac{1}{2}$  ft  
 base around post

82.45

Entered the First Standard  
 Parallel South 76 Wks E of the  
 Standard Cor. to Secs 35 & 36  
 T5S. R5E. previously described  
 by me  
 At this point I set a mesquite

Subdivision T6 S. R56 Continued  
 Chain

Post 4 ft long 4 in square with  
 marked stone 12 in in the  
 ground for closing corner to  
 Secs 2 & 3 marked

C.C. T6 S. R56 on S.

S 2 on E and

S 3 on W. face, with 2 notches  
 on E and 4 notches on W. edge  
 dug pits 18 x 18 x 12 in S. E & W  
 of post 5 1/2 ft dist and raised  
 a mound of earth 2 ft high  
 4 1/2 ft base around post.

Land level

Soil yellow loam 1<sup>st</sup> rate

Dense brush entire mile.

From the cor to Secs 3, 4, 33 & 34  
 on the S. boundary of the Tps.  
 previously established and

Subdivisions T. S. R. 56. Continued

Chains

described by me

I run

North bet Secs 33 & 34

Var  $12^{\circ} 49' E.$

Over level ground

40.00

Set a mesquite post 3 ft long  
3 ins square with marked stone  
12 ins in the ground for "400  
Cor marked "4 S. on W. face  
dig pits 18 X 18 X 12 ins N & S of  
post 5 1/2 ft dist and raised a  
mound of earth 1 1/2 ft high 3 1/2 ft  
base around post

50.00

Set a mesquite post 4 ft long 4 ins  
square with marked stone 12 ins  
in the ground for cor to Seco  
27. 28. 33 & 34 marked  
T. S. S. 27 on NE  
R 56. S. 34 on SE.



Subdivisions T. 1. R. 5. E. Continued

Chavis

S. 33 on SW and

S. 28 on NW. faces, with  
notch on S and 3 notches on E  
edges, dug pits 18 X 18 X 12 in in  
each sec 5 1/2 ft dia and raised  
a mound of earth 2 ft high  
4 1/2 ft base around front.

Land level

Soil yellow loam 1<sup>st</sup> rate

Dense greasewood and  
mesquite brush entire mile

East on a random line bet sec 2 & 34

Var 12° 49' E.

Over level ground

40.00 Set temporary 1/4 sec cor.

46.12 Cross creek 25 yds wide corner NW.

80.12 Intersect N & S line 27 yds S of the  
cor to Secs 26. 27. 34 & 35

Subdivision T6 S. R56. Continued

Trains

Thence S run

S  $89^{\circ}48'$  W. on a true line bet  
Secs 27 & 34 with same Var.

40.06

Set a mesquite post 3ft long 3 ins  
square with marked stone 12 ins  
in the ground for  $\frac{1}{4}$  sec cor.  
marked  $\frac{1}{4}$  S on N. face dig  
pits 18 x 18 x 12 ins E & W of post  
 $5\frac{1}{2}$  ft dist and raised a mound  
of earth 1 $\frac{1}{2}$  ft high  $3\frac{1}{2}$  ft base  
around post

80.12

The cor to Secs 27, 28, 33 & 34

Land level

Soil yellow loam 1<sup>st</sup> rate

Some sage brush and mesquite  
entire mile

Oct 27<sup>th</sup> 1887.

Subdivisions T.S.R. 56. Continued  
 Chans

North bet Secs 27 & 28

Var  $12^{\circ} 49' E$ .

Over nearly level ground

40.00 Set a mesquite post 3 ft long 3 in square with marked stone 12 in in the ground for  $\frac{1}{4}$  sec cor. marked  $\frac{1}{4}$  S on W. face, dry pits 18 x 18 x 12 in N & S of post  $5\frac{1}{2}$  ft dist and raised a mound of earth  $1\frac{1}{2}$  ft high  $3\frac{1}{2}$  ft base around post

72.00 Cross creek 25 lbs wide course  $N 50^{\circ} W$ .

80.00 Set a mesquite post 4 ft long 4 in square with marked stone 12 in in the ground for cor to Secs 21, 22, 27 & 28 marked T.S. S. 22 on NE R. 56 S. 27 on SE

## Subdivision T6S. R3E. Continued.

Trans

S. 28 on SW end

S. 21 on NW face with  
2 notches on S and 3 notches  
on E edges, dry pits 18 X 18 X 12 ins  
in each sec 5½ ft dist and  
raised a mound of earth 2 ft  
high 4½ ft base around post  
Land nearly level

Soil yellow loam 1<sup>st</sup> rateDrainage and mesquite  
brush entire mile.

East on a random line bet Secs 22 &amp; 27

Var. 12° 48' E

Over level ground

40.00

Set temporary ¼ sec cor.

80.00

Intersect N & S line 18 W of S of  
the cor. to Secs 22-23-26 & 27

Thence S run

Subdivision T6S. R5E. Continued

Chain

- 40.00 S  $89^{\circ}52'$  W. on a true line bet  
Secs 22 & 27. with same Var  
Set a mesquite post 3 ft long 3 ins  
square with marked stone 17 ins  
in the ground for  $\frac{1}{4}$  Sec cor marked  
 $\frac{1}{4}$  S. on N. face, dry pits 18 X 18 X 12  
ins E & W of post  $5\frac{1}{2}$  ft dist and  
raised a mound of earth  $1\frac{1}{2}$  ft  
high  $3\frac{1}{2}$  ft base around post.
- 80.00 The cor to Secs 21, 22, 27 & 28.  
Land level  
Soil yellow loam 1<sup>st</sup> rate  
Dense brush entire mile.

North bet Secs 21 & 22

Var.  $12^{\circ}48'E.$

Over level ground.

- 40.00 Set a mesquite post 3 ft long  
3 ins square with marked

Subdivisions T6S. R5E. Continued  
<sup>thaw</sup>

stone 12 ins in the ground  
 for  $\frac{1}{4}$  sec cor. marked  $\frac{1}{4}$  S. on  
 W face, dry pits 18 x 18 x 12 ins  
 N & S of post  $5\frac{1}{2}$  ft dist and  
 raised a mound of earth  
 $1\frac{1}{2}$  ft high  $3\frac{1}{2}$  ft base around  
 post

80.00 Set a mesquite post 4 ft long  
 4 ins square with marked  
 stone 12 ins in the ground  
 for cor to Secs 15. 16. 21 & 22  
 marked

T6S. S. 15 on NE

R5E S 22 on SE

S. 21 on SW and

S. 16 on NW faces, with  
 3 notches on S and E edges, dry  
 pits 18 x 18 x 12 ins in each sec  
 $5\frac{1}{2}$  ft dist and raised a

Subdivision T6 S. R56. Continued

Chari

mound of earth 2 ft high 4 1/2 ft  
base around post.

Land level

Soil yellow loam 1st rate

Dense brush entire mile.

East on a random line bet Secs 15 & 22

Var.  $12^{\circ} 47' E$ .

40 Over level ground

40.00 Set temporary 1/4 sec cor.

80.12 Intersect N & S line at the cor  
to Secs 14 15. 22 & 23

Thence I run

West on a true line bet Secs  
15 & 22 with same var.

40.06 Set a mesquite post 3 ft long  
3 ins square with marked stone  
12 ins in the ground for 1/4 sec  
cor. marked 1/4 S. on N. face

Subdivision T.B. R. 5 E. Continued

dry pits 18 x 18 x 12 in E & W of  
post 5½ ft dist and raised  
a mound of earth 1½ ft high  
3½ ft base around post.

80.12 The cor to Secs 15, 16, 21 & 22

Land level

Soil yellow loam 1st rate

Dense brush entire mile

North bet Secs 15 & 16

Var 12° 47' E

Over level ground

40.00 Set a mesquite post 3 ft long 3 in  
square with marked stone 12 in  
in the ground for ¼ Sec Cor.

marked ¼ S. on W face, dry  
pits 18 x 18 x 12 in N & S of post  
5½ ft dist and raised a mound  
of earth 1½ ft high 3½ ft base



Subdivision T6 S. R56. Continued  
Chains

around post.

80.00 Set a mesquite post 4 ft long 4 in square with marked stone 12 in in the ground for cor to Secs 9, 10, 15 & 16 marked

T6 S. S. 10 on NE

R56 S. 15 on SE

S. 16 on SW and

S. 9 on NW faces, with 4 matches on S and 3 matches on E edges, dug pits 18 x 18 x 12 in in each Sec 5 1/2 ft dist and raised a mound of earth 2 ft high 4 1/2 ft base around post.

Land level

Soil yellow loam 1<sup>st</sup> rate

Dense sage mesquite and greasewood brush entire mile

Subdivision No. 16 S. R. 56. Continued

Name

East on a random line bet Secs 10 & 15

Var.  $12^{\circ} 47' E$ .

40.00 Let temporary  $\frac{1}{4}$  Sec Cor.

78.50 Cross Road course  $N 50^{\circ} W$

79.92 Intersect it & S line 31 lks S of the  
Cor to Secs 10. 11. 14 & 15

Thence S ever

$S 89^{\circ} 47' W$ . on a true line bet  
Secs 10 & 15 with same Var.

79.96 Let a mesquite post 3 ft long 3 ins  
square with marked stone 12 ins  
in the ground for  $\frac{1}{4}$  Sec Cor. marked  
 $\frac{1}{4}$  S on N. face, dug pits  $18 \times 18 \times 12$  ins  
E & W. of post  $5\frac{1}{2}$  ft dist and  
raised a mound of earth  $1\frac{1}{2}$  ft  
high  $3\frac{1}{2}$  ft base around post.

79.92 The cor to Secs 9. 10. 15 & 16

Land level

Soil yellow loam <sup>1st</sup> rate

Dense brush entire mile

Subdivision T6S. R5E. Contiguous  
Chains

North bet Secs 9 & 10

Var.  $12^{\circ} 47' E$ .

Over nearly level ground

- 36.00 Cross Santa Cruz river 70 Mts wide  
 course West.
- 40.00 Set a mesquite post 3 ft long 3 ins  
 square with marked stone 12 ins in  
 the ground for  $\frac{1}{4}$  Sec Cor. marked  
 $\frac{1}{4}$  S. on W. face dig pits 18 X 18 X 12 ins  
 N & S of post  $5\frac{1}{2}$  ft diam and raised  
 a mound of earth  $1\frac{1}{2}$  ft high  $3\frac{1}{2}$  ft  
 base around post.
- 60.00 Cross railroad, bears  $N 33^{\circ} 50' W$   
 and  $S 53^{\circ} 50' E$ .
- 80.00 Set a mesquite post 4 ft long 4 ins  
 square with marked stone 12 ins  
 in the ground for Cor. to Secs 3, 4,  
 9 & 10 marked  
 T. 6 S. S 3 on N 6

Subdivision T6S. R5E. Continued

Chains

R5E S. 10 on SE.

S 9 on SW and

S. 4 on NW face, with 5 notches  
on S and 3 notches on E. edges, dry  
pits 18 x 18 x 12 in in each sec 5 1/2 ft  
dist and raised a mound of earth  
2 ft high 4 1/2 ft base around post.

Land level

Soil yellow loam 1<sup>st</sup> rate

Several eye break and mosquito  
entire mile

East on a random line bet Secs 3 & 10

Var 12° 48' E.

Over level ground

40.00 Set temporary 1/4 Sec Cor.

19.88 Intersect N & S line 4 1/2 Chs S. of the  
Cor to Secs 2, 3, 10 & 11

Thence S new

Subdivision T6 S. R5 E Continued  
Chain

- S89°42' W. on a true line bet Secs  
3 & 10 with same Var.
- 39.94 Set a mesquite post 3 ft long 3 ins  
square with marked stone 12 ins  
in the ground for  $\frac{1}{4}$  sec cor. marked  
 $\frac{1}{4}$  S on N face, dug pits 18 x 18 x 12  
ins E & W. of post 5  $\frac{1}{2}$  ft dist and  
raised a mound of earth 1  $\frac{1}{2}$  ft high  
3  $\frac{1}{2}$  ft base around post
- 79.88 The cor to Secs 3, 4, 9 & 10  
Land level  
Soil loan 1<sup>st</sup> rate  
Sence back entire mile,

---

North on a true line bet Secs 3 & 4  
Var 12°48' E.

Over level ground

- 40.00 Set a mesquite post 3 ft long 3 ins  
square with marked stone 12 ins

Subdivision T6 S. R5 E. Continued

chain

in the ground for  $\frac{1}{4}$  Sec Cor. marked  
 $\frac{1}{4}$  S. on W face, dug pits 18 X 18 X 12 in  
 N & S of post  $5\frac{1}{2}$  ft dist and raised  
 a mound of earth  $1\frac{1}{2}$  ft high  $3\frac{1}{2}$  ft  
 base around post.

82.60. Intersect Forest Standard Parallel  
 South 48 lbs E. of the Standard Cor-  
 to Secs 34 & 35 T5 S. R5 E previous  
 by described by me

At this point I set a mesquite post  
 4 ft long 4 in square with marked  
 stone 12 in in the ground for closing  
 corner to Secs 3 & 4 marked  
 C.C. T6 S. R5 E on S.

S3 on E and

S4 on W. faces, with 3 matches  
 on E & W. edges, dug pits 18 X 18 X 12  
 in S. E & W of post  $5\frac{1}{2}$  ft dist  
 and raised a mound of earth

Subdivision T. 6 S. R. 5 E. continued

Chain

2 ft high  $4\frac{1}{2}$  ft base around post  
Land level

Sail loan 1<sup>st</sup> rate

Denae break entire mile

Oct 28<sup>th</sup> 1887

At 12 o'clock M. to day I found latitude  
to be  $32^{\circ} 56' N.$  and my compass  
in good adjustment.

From the Cor to Secs 4, 5, 32 and  
33 on the S. boundary of the Township  
previously established and described  
by me

I run

North bet Secs 32 & 33

Var.  $12^{\circ} 50' E.$

Over level ground

40.00 Set a mesquite post 3 ft long 3 ins

Subdivision's T.C.S. R56. Continued  
 name

square with marked stone 12 ins in  
 the ground for  $\frac{1}{4}$  sec loc. marked  $\frac{1}{4}$   
 S. on W. face, dry pits  $18 \times 18 \times 12$  ins N  
 & S of post  $5\frac{1}{2}$  ft dist and raised  
 a mound of earth  $1\frac{1}{2}$  ft high  $3\frac{1}{2}$  ft  
 base around post.

80.00 Set a mesquite post 4 ft long 4 ins  
 square with marked stone 12 ins in  
 the ground for cor to Secs 28. 29. 32 & 33  
 marked

T.C.S. S. 28 on NE

R56. S. 33 on SE

S. 32 on SW and

S 29 on NW faces, with 1 notch  
 on S and 4 notches on E edges, dry  
 pits  $18 \times 18 \times 12$  ins in each Sec  $5\frac{1}{2}$   
 ft dist and raised a mound  
 of earth 2 ft high  $4\frac{1}{2}$  ft base around  
 post



Subdivision T6S. R5E. Continued  
 Chaus

Land level

Soil sedimentary 1<sup>st</sup> rate

Dense brush entire mile.

East on a random line bet Secs 28 & 33  
 Var  $12^{\circ}49' E$ .

Once level ground

40.00 Set temporary  $\frac{1}{4}$  Sec Cor.

80.00 Intersect N & S line 31 Wks S of the  
 Cor to Secs 27, 28, 33 & 34

Thence I run

$S 89^{\circ}47' W$  on a true line bet Secs  
 28 & 33 with same Var

70.00 Set a mesquite post 3 ft long 3 ins  
 square with marked stone 12 ins  
 with ground for  $\frac{1}{4}$  Sec Cor. marked  
 $\frac{1}{4}$  S. on N. face, dug pits 18 x 18 x 12  
 ins E & W of post  $5\frac{1}{2}$  ft apart and  
 raised a mound of earth  $1\frac{1}{2}$  ft

Field divisions T. S. R. S. C. continued

80.00 high  $3\frac{1}{2}$  ft base around post  
The cor to Secs 28. 29. 32 & 33

Land level

Soil yellow loam 1<sup>st</sup> rate

Dense greasewood and mesquite  
brush entire mile.

North bet Secs 28 and 29

Dir  $12^{\circ} 48' E$

Over level ground

40.00 Set a mesquite post 3 ft long 3 ins  
square with marked stone 12 ins in  
the ground for  $\frac{1}{4}$  sec cor. marked  $\frac{1}{4}$  S  
on W. face, dig pits 18 X 18 X 12 ins N  
& S of post  $5\frac{1}{2}$  ft dist and raised  
a mound of earth  $1\frac{1}{2}$  ft high  $3\frac{1}{2}$  ft  
base around post.

80.00 Set a mesquite post 4 ft long 4 ins  
square with marked stone 12 ins in

Subdivision T.C. R56. Continued

Cham

the ground for Cor to Secs 20-21

28 & 29 marked

T.C. S. 21 on NE

R56 S. 28 on SE

S. 29 on SW and

S. 20 on NW faces, with 2  
notches on S and 4 notches on E  
edges, dry pits 18 x 18 x 12 ins in each  
Sec 5 1/2 ft dia and raised a mound  
of earth 2 ft high 4 1/2 ft base around  
post.

Land level

Soil yellow loam 1<sup>st</sup> rate

Dense greasewood and mesquite brush

East on a random line bet Secs 21 & 20

Var. 12° 47' E.

40.00 Set temporary 1/4 Sec Cor.

60.88 Cross creek 20 lbs wide course N W

Subdivision T. 6 S. R. 5 E. Continued

Chains

79.88 Intersect N & S line 194<sup>ths</sup> S of the Cor  
to Secs 21. 22. 27 & 28

Thence I run

S 89° 52' W. on a true line bet Secs  
21 & 28 with same Var.

39.94 Set a mesquite post 3 ft long 3 ins  
square with marked stone 12 ins in  
the ground for  $\frac{1}{4}$  Sec Cor. marked  $\frac{1}{4}$  S.  
on N. face dug pits 18 X 18 X 12 ins. E  
& W. of post  $5\frac{1}{2}$  ft dist and raised  
a mound of earth  $1\frac{1}{2}$  ft high  $3\frac{1}{2}$  ft diam  
around post

79.88 The Cor to Secs 20. 21. 28 & 29

Land nearly level

Soil loam 1<sup>st</sup> rate

Some sage brush and mesquite  
entire mile

Oct 29<sup>th</sup> 1887.

Subdivision T.C. R5E. continued  
Chain

North bet Secs 20 & 21

Var.  $12^{\circ}47' E$ .

Over nearly level ground

40.00 Set a mesquite post 3 ft long 3 in square with marked stone 12 in in the ground for  $\frac{1}{4}$  Sec Cor. marked  $\frac{1}{4}$  S. on W face, dug pits  $18 \times 18 \times 12$  in N & S of post  $5\frac{1}{2}$  ft dia and raised a mound of earth  $1\frac{1}{2}$  ft high  $3\frac{1}{2}$  ft base around post

60.00 Cross creek 25 the wide course W

80.00 Set a mesquite post 4 ft long 4 in square with marked stone 12 in in the ground for cor to Secs 16, 17, 20 and 21 marked

T.C. S. 16 on NE

R5E S. 21 on SE

S. 20 on SW and

S. 17 on NW faces, with 3 notches

Subdivision S. C. S. R. S. C. Continuation  
 Harris

on sand 4 notches on edges, dry  
 pits 18 x 18 x 12 ins in each sec 5 1/2 ft  
 dist and raised a mound of earth  
 2 ft high 4 1/2 ft low around post  
 Land level

Soil yellow loam 1<sup>st</sup> rate

Dense brush entire sec.

East on a random line bet Secs 16 & 21  
 Var 12° 47' E.

Over level ground

40.00 Set temporary 1/4 sec cor

0.00 Intersect S & S line 23 lks S of the  
 cor to Secs 15, 16, 21 & 22

Thence I run

S 89° 50' W. on a true line bet Secs  
 16 & 21 with same Var.

40.00 Set a mesquite post 3 ft long 3 ins  
 square with marked down 12 ins in

Subdivision T.S. R. 56. continued  
Chains.

the ground for  $\frac{1}{4}$  Sec Cor. marked  
 $\frac{1}{4}$  S on N. face, dug pits 18x18x12  
 vis E & W of post  $5\frac{1}{2}$  ft dia and  
 raised a mound of earth  $1\frac{1}{2}$  ft  
 high  $3\frac{1}{2}$  ft base around post.

80.00 The cor to Secs 16, 17, 20 & 21

Land level

Soil yellow loam 1<sup>st</sup> rate

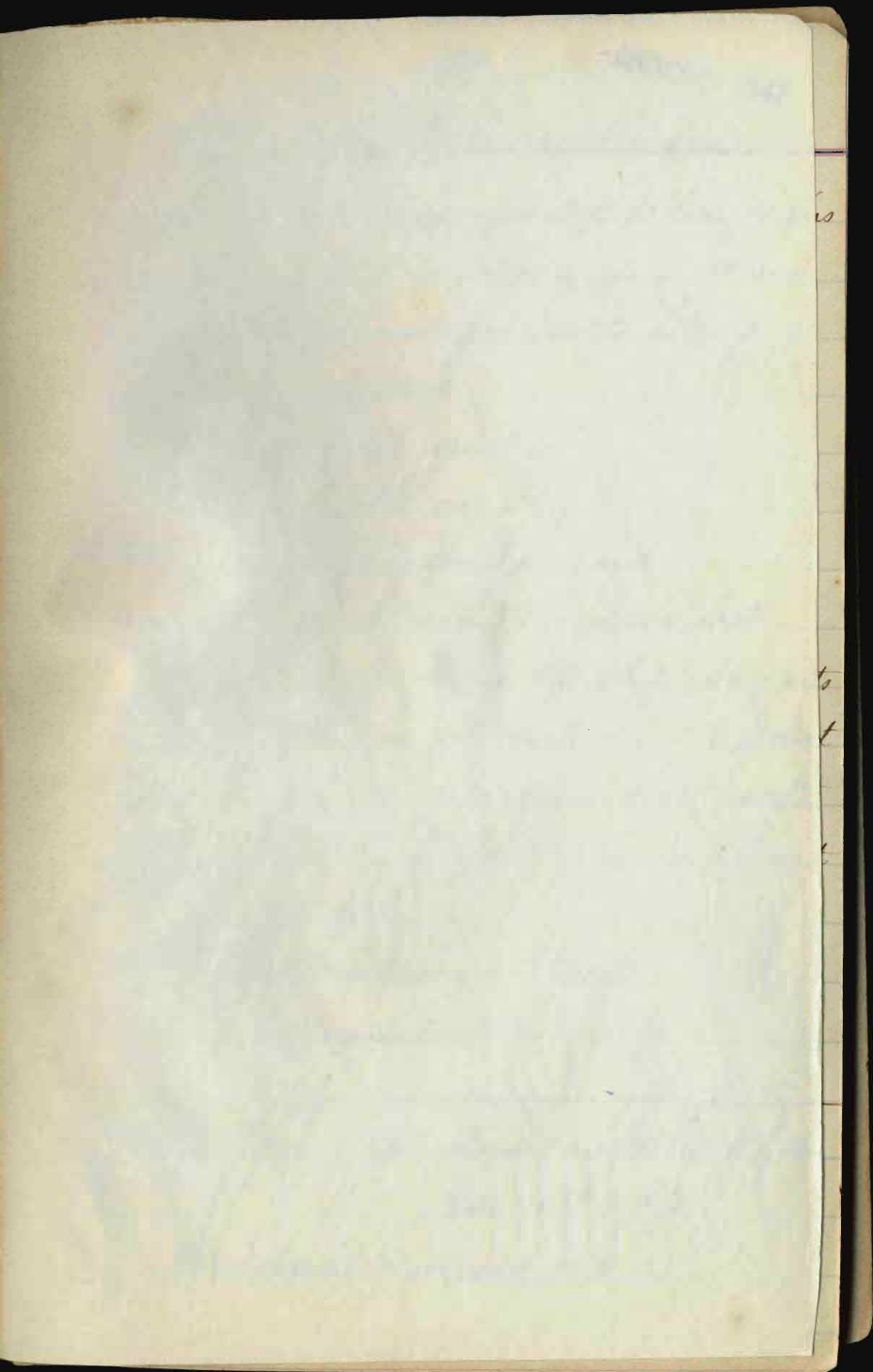
Dense brush entire mile.

North bet Secs 16 & 17

Var.  $12^{\circ}47'6''$

Over level ground

70.00 Set a mesquite post 3 ft long 3 ins  
 square with marked stone 12 ins in  
 the ground for  $\frac{1}{4}$  Sec Cor. marked  $\frac{1}{4}$  S  
 on W. face, dug pits 18x18x12 vis N  
 & S of post and raised a mound  
 of earth  $1\frac{1}{2}$  ft high  $3\frac{1}{2}$  ft base around post.





Subdivisions T. 6 S. R. 5 E - continued

Chairs

80.00 Set a mesquite post 4 ft long 4 ins square with marked stone 12 ins in the ground for cor to Secs 8, 9, 16 & 17 marked.

T. 6 S. 9 on NE

R. 5 E. 16 on SE

S. 17 on SW and

S. 8 on NW faces with

4 notches on S and E edges, dry pits 18 X 18 X 12 ins in each Sec 5 1/2 ft dia and raised a mound of earth 2 ft high 4 1/2 ft base around post Land level

Soil yellow loam 1<sup>st</sup> rate

Dense brush entire mile.

East on a random line bet Secs 9 & 16

Var. 12° 47' E.

Over level ground

## Subdivision T6S. R5E. continued

Chains

- 40.00 Set temporary  $\frac{1}{4}$  Sec cor.
- 80.00 Intersect N & S line 41 lbs S of  
the cor to Secs 9. 10. 15 & 16.  
Thence S run  
S89°42'W on a true line bet Secs  
9 & 16 with same bar.
- 40.00 Set a mesquite post 3 ft long 3 ins  
square with marked stone 12 ins  
in the ground for  $\frac{1}{4}$  Sec cor  
marked  $\frac{1}{4}$  Sec N. face, dug pits  
18 x 18 x 12 ins E & W of post 5  $\frac{1}{2}$  ft  
dist and raised a mound of  
earth 1  $\frac{1}{2}$  ft high 3  $\frac{1}{2}$  ft base around  
post.
- 80.00 Thence to Secs 8. 9. 16 & 17  
Land level  
Soil yellow loam 1<sup>st</sup> rate  
Dense brush entire mile

## Subdivision T6 S. R5 E. Continued

chain

North bet Secs 8 &amp; 9

Var.  $12^{\circ}47'E$ .

Over level ground

27.00 Cross Santa Cruz river 80 lks wide  
course  $S48^{\circ}W$ .40.00 Set a mesquite post 3ft long 3 ins  
square with marked stone 12 ins  
in the ground for  $\frac{1}{4}$  Sec Cor.  
marked  $\frac{1}{4}$  S on W face, dig pits  
18 x 18 x 12 ins N & S of post  $5\frac{1}{2}$  ft  
dist and raised a mound of  
earth  $1\frac{1}{2}$  ft high  $3\frac{1}{2}$  ft base around  
post80.00 Set a mesquite post 4ft long 4 ins  
square with marked stone 12 ins  
in the ground for Cor to Sec 4.  
5-8 & 9 marked

F. C. S. S. 4 on NE

R5 E S. 9 on SE

## Subdivision T6S. R5E. continued

Chains

S. 8 on Sward

S. 5 on NW face with 5 notches  
on S and 4 notches on E edges  
dry pits 18 x 18 x 12 ins in each Sec  
5 1/2 ft dist and raised a mound  
of earth 2 ft high 4 1/2 ft base  
around post.

Land level

Soil yellow loam 1<sup>st</sup> rate

Dense brush entire mile

East on a random line bet Sec 4 &amp; 9

Var 12° 48' E.

Over level ground

40.00 Lot temporary 1/4 Sec cor.

41.00 Cross wagon road bears N 54° W  
and S 53° E.52.10 Cross Southern Pacific Railroad  
bears N 53° 50' W & S 53° 50' E.

## Subdivision T. 5. R. 5. E. continued

Chain

80.10 Intersect N & S line 28 lks S of the cor to Secs 3, 4, 9, & 10.

Thence S run

S  $89^{\circ} 48' W$ . on a true line bet Secs 4 & 9 with same var.

40.05 Set a mesquite post 3 ft long 3 ins square with marked stone 12 ins in the ground for  $\frac{1}{4}$  Sec cor. marked  $\frac{1}{4}$  S on N face, dug pits 18 X 18 X 12 ins E & W of post  $5\frac{1}{2}$  ft dia and raised a mound of earth  $1\frac{1}{2}$  ft high  $3\frac{1}{2}$  ft base around post.

80.10 The cor to Secs 4, 5, 8 & 9

Land level

Soil yellow loam 1<sup>st</sup> rate

Dense brush entire mile.

Subdivision T6 S. R 5 E. continued

Chairs

North on a true line bet Secs 4 & 5  
Var.  $12^{\circ}48'E$ .

Over level ground

- 31.00 Cross wagon road bears  $N34^{\circ}W$
- 39.00 Cross Southern Pacific Railroad  
bears  $N53^{\circ}50'W$  and  $S53^{\circ}50'E$ .
- 40.00 Set a mesquite post 3 ft long  
3 in square with marked atom  
12 in in the ground for  $\frac{1}{4}$  Sec  
Cor. marked  $\frac{1}{4}$  S on W. face dug  
pits 18 x 18 x 12 in N & S of post  
 $5\frac{1}{2}$  ft dist and raised a mound  
of earth  $1\frac{1}{2}$  ft high  $3\frac{1}{2}$  ft base  
around post.
- 82.70 Intersect First Standard Parallel  
South 21 lbs N. of the Standard Cor  
to Secs 33 & 34 T5 S. R 5 E  
previously described by me  
At this point I set a mesquite post

Subdivision T6 S. R 5 E. Continued  
 Charis

4 ft long 4 in square with marked  
 stone 12 in in the ground for  
 closing corner to Secs 4. 5 marked  
 C.C. T6 S. R 5 E on S.

S 4 on E and

S 5 on W face, with 4 notches  
 on E and 2 notches on W edges, dug  
 pits 18 x 18 x 12 in S. E & W. of post  
 5 1/2 ft dia and raised a mound  
 of earth 12 ft high 4 1/2 ft base around  
 post.

Land nearly level

Soil yellow loam 1<sup>st</sup> rate

Dense brush entire mile

Oct 31<sup>st</sup> 1887

From the cor to Secs 5. 6. 31 & 32 on  
 the S boundary of the Township  
 previously established and described

Subdivision T6 S. R5 E - continued  
chains

by me

Thence I run

North bet Secs 31 &amp; 32

Var  $12^{\circ}49' E$ .

Over level ground.

40.00

Set a mesquite post 3 ft long  
3 ins square with marked stone  
12 ins in the ground for "4 Sec Cor  
marked "4 S. on W face; dig  
pits 18 x 18 x 12 ins N & S of post  
 $5\frac{1}{2}$  ft dist and raised a mound  
of earth  $1\frac{1}{2}$  ft high  $3\frac{1}{2}$  ft base  
around post

80.00

Set a mesquite post 4 ft long  
4 ins square with marked stone  
12 ins in the ground for cor to  
Secs 29, 30, 31 & 32 marked

T6 S. S 29 on NE

R5 E S 32 on SE



## Subdivision T6 S. R 5 E. Continued

Chains

S. 31 on S and

S 30 on N. faces, with 1 notch  
on S and 5 notches on E edges  
dug pits 18 x 18 x 12 ins in each  
Sec 5 1/2 ft dist and raised a  
mound of earth 2 ft high 4 1/2 ft  
base around post.

Land level

Soil yellow loam 1<sup>st</sup> rate

Some brush entire mile

East on a random line bet Secs 29 &amp; 32

Var 12° 49' E

Over level ground

40.00 Set temporary 1/4 Sec Cor.

79.92 Intersect N & S line 17 chs S of the  
cor to Secs 28. 29. 32 & 33

Thence I run

S 89° 53' W on a true line bet

## Subdivision T6 S. R5 E. continued

Chains

- Secs 29 & 32 with same var.
- 39.96 Set a mesquite post 8 ft long 3 in square with marked stone 12 in in the ground for  $\frac{1}{4}$  Sec Cor. marked  $\frac{1}{4}$  S. on N. face, dug pits 18 x 18 x 12 in E & W. of post 5  $\frac{1}{2}$  ft dist and raised a mound of earth 1  $\frac{1}{2}$  ft high 3  $\frac{1}{2}$  ft base around post
- 79.92 The cor to Secs 29. 30. 31 & 32  
Land level  
Soil yellow loam 1<sup>st</sup> rate  
Dense brush entire mile
- West on a random line bet Secs 30 & 31  
Var. 12° 49' E.  
Over level ground
- 40.00 Set temporary  $\frac{1}{4}$  Sec Cor.
- 78.94 Intersect First Auxiliary Meridian East,

Subdivision T<sub>6</sub>S. R<sub>5</sub>E. continued

Charris

49<sup>th</sup> N. of the Cor to Secs 25-30-31 & 36  
previously established and described by me  
Thence I run

N.  $89^{\circ} 39' E$  on a true line bet Secs 30 &  
31 with same Var.

38.94 Set a mesquite post 3 ft long 3 ins square  
with marked stone 12 ins in the ground  
for  $\frac{1}{4}$  sec cor. marked  $\frac{1}{4}$  S on N face  
dig pits 18 X 18 X 12 ins E & W. of post  
 $5\frac{1}{2}$  ft dia and raised a mound of  
earth  $1\frac{1}{2}$  ft high  $3\frac{1}{2}$  ft base around post

78.94 The cor to Secs 29, 30, 31 & 32

Land level

Soil rich loam 1<sup>st</sup> rate

Some greasewood brush and  
mesquite entire mile.

North bit Secs 29 & 30

Var.  $12^{\circ} 49' E$

## Subdivision T6 S. R5 E. continued

Chain

Over level ground

40.00

Set a mesquite post 2 ft long 3 ins square with marked stone 12 ins in the ground for  $\frac{1}{4}$  Sec Cor marked '45 on W face, dry pits 18 x 18 x 12 ins N & S. of post  $5\frac{1}{2}$  ft dist and raised a mound of earth  $1\frac{1}{2}$  ft high  $3\frac{1}{2}$  ft base around post

80.00

Set a mesquite post 4 ft long 4 ins square with marked stone 12 ins in the ground for Cor to Secs 19, 20, 29 & 30 marked

T6 S. S. 20 on NE

R5 E. S. 29 on SE

S. 30 on SW and

S. 19 on NW faces, with 2 notches on S and 5 notches on E edges, dry pits 18 x 18 x 12 ins in each Sec  $5\frac{1}{2}$  ft dist and raised a mound of earth 2 ft high  $4\frac{1}{2}$  ft base around post

## Subdivision T.C. R. 56. Continued

Chain

Land level

Soil yellow loam 1<sup>st</sup> rate

Dense brush entire mile.

East on a random line bet Secs 20 &amp; 29

Var  $12^{\circ}48'6''$ .

Over level ground

40.00 Set temporary  $\frac{1}{4}$  Sec Cor.80.00 Intersect N & S line 22 ths S of the cor  
to Secs 20, 21, 28 & 29

Thence I run

S  $89^{\circ}51'W$ . on a true line bet Secs 20

&amp; 29 with same Var.

40.00 Set a measuring post 3 ft long 3 ins  
square with marked stem 12 ins into  
ground for  $\frac{1}{4}$  Sec Cor. marked  $\frac{1}{4}$  S  
on N face, dug pits 18 x 18 x 12 ins E &  
W of post 5  $\frac{1}{2}$  ft dist and raised a  
mound of earth 1  $\frac{1}{2}$  ft high 3  $\frac{1}{2}$  ft diam

## Subdivision T6 S. R 5 E. Continued

Chain

around post

80.00 The cor to Secs 19, 20, 29 &amp; 30

Land level

Soil yellow loam 1<sup>st</sup> rate

Dense brush entire mile.

West on a random line bet Secs 19 &amp; 30

Var  $12^{\circ} 48' 6''$ .

Over level ground

40.00 Set temporary  $\frac{1}{4}$  Sec cor.78.96 Intersect First Auxiliary Meridian  
East  $49^{\circ}$  Ups. N. of the Cor to Secs 19, 24,  
25 & 30 previously established and  
described by me

Thence I run

 $N 89^{\circ} 39' E$  Cor a true line bet Secs 19 &  
30 with same Var.38.96 Set a mesquite post 3 ft long 3 ins square  
with marked stone 12 ins in the ground

Subdivision T.C.S.R. 5E. continued

Chains

for  $\frac{1}{4}$  Sec Cor. marked  $\frac{1}{4}$  S. on N face  
dug pits 18x18x12 in E & W of post  
 $5\frac{1}{2}$  ft dist and raised a mound of  
earth  $1\frac{1}{2}$  ft high  $3\frac{1}{2}$  ft base around post

78.96 The Cor to Secs 19, 20, 29 and 30  
Land level

Soil yellow loam 1<sup>st</sup> rate

Dense brush entire mile

Nov 1<sup>st</sup> 1887

North bet Secs 19 & 20

Var  $12^{\circ} 48' E.$

Over level ground

40.00 Set a mesquite post 3 ft long 3 in square  
with marked stone 12 in with ground  
for  $\frac{1}{4}$  Sec Cor. marked  $\frac{1}{4}$  S. on N face  
dug pits 18x18x12 in N & S of post  $5\frac{1}{2}$   
ft dist and raised a mound of  
earth  $1\frac{1}{2}$  ft high  $3\frac{1}{2}$  ft base around

Subdivision T6 S. R5 E - continued  
 Chain

post.

80.00 Set a mesquite post 4 ft long 4 in square  
 with marked above 12 in in the ground  
 for cor to Secs 17 & 18, 19 & 20 marked

T6 S. R. 17 on NE

R5 E S. 20 on SE

S. 19 on SW and

S. 18 on NW faces with 3 notches  
 on S and 5 notches on E edges, dig  
 pits 18 x 18 x 12 in in each Sec 5 1/2 ft  
 dist and raised a mound of  
 earth 2 ft high 4 1/2 ft base around  
 post.

Land level

Soil yellow loam 1<sup>st</sup> rate

Dense eye brush and grease-  
 wood entire mile.



## Subdivision T.C. R. 56. continued

chain

East on a random line bet Secs 17 &amp; 20

Var 12'47

Over level ground

40.00 Set temporary  $\frac{1}{4}$  sec cor.

45.86 Cross creek 20 chs wide corner

79.86 Intersect N & S line 50 chs S of the Cor.  
to Secs 16. 17 & 20 & 21

Thence down

S 90° 38' W. on a true line bet Secs 17 &  
20 with same Var.

39.93 Set a mesquite post 3 ft long 3 in square  
with marked stem 12 in in the ground  
for  $\frac{1}{4}$  Sec Cor. marked  $\frac{1}{4}$  S on N face  
dig pits 18 x 18 x 12 in E & W of post 5  $\frac{1}{2}$   
ft dist and raised a mound of  
earth 1  $\frac{1}{2}$  ft high 3  $\frac{1}{2}$  ft base around  
post.

79.86 The cor. to Secs 17. 18. 19 & 20  
Land level

Subdivision T.C. R 5 E. continued  
Chains

Soil yellow loam 1<sup>st</sup> rate  
dense brush sage and mesquite

West on a random line bet Secs 18 & 19  
Var  $12^{\circ}47'E$ .

Over level ground.

- 40.00 Set temporary  $\frac{1}{4}$  Sec Cor.  
78.92 Intersect First Auxiliary Meridian  
East 25th S. of the Cor to Secs 13, 18  
19 & 24 previously established and  
described by me

Thence S run

$N 89^{\circ}49'E$  on a true line bet Secs 18 & 19  
with same Var.

- 38.92 Set a mesquite post 3 ft long 3 in  
square with marked stone 12 in  
in the ground for  $\frac{1}{4}$  Sec Cor marked  
 $\frac{1}{4}$  S on N. face, dry pits 18 X 18 X 12  
in E & W of post  $5\frac{1}{2}$  ft dist and

Subdivisions T6 S. R 5 E. - continued  
chains

raised a mound of earth  $1\frac{1}{2}$  ft  
high  $3\frac{1}{2}$  ft base around post

78.92 In cor. to Secs 17, 18, 19 and 20  
Land level

soil yellow loam 1<sup>st</sup> rate

Dense brush sage, mesquite and  
greasewood entire mile.

North bet Secs 17 & 18

Var.  $12^{\circ}47'E$

Over mostly level ground

40.00 Set a mesquite post 3 ft long 3 ins  
square with marked stone 12 ins in the  
ground for  $\frac{1}{4}$  Sec Cor marked  $\frac{1}{4}$  S on  
It face, dug pits 18 x 18 x 12 ins N & S of  
post  $5\frac{1}{2}$  ft diam and raised a mound  
of earth  $1\frac{1}{2}$  ft high  $3\frac{1}{2}$  ft base around  
post

80.00 Set a mesquite post 4 ft long 4 ins square

Subdivision of T. S. R. 5 E. continued  
 Chains

with marked stone 12 ins in the ground  
 for cor to Sec 7. 8. 17. Or 18 marked

T. S. S. 8 on NE

R. 5 E. S. 17 on SE

S. 18 on SW and

S. 7 on NW face with 4 notches  
 on S and 5 notches on E edges dug

6 or 14 pits 18 X 15 X 12 ins in each Sec 5 1/2 ft  
 dist and raised a mound of  
 earth 2 ft high 4 1/2 ft base around post.

Land level

Soil yellow loam 1<sup>st</sup> rate

Dense brush entire mile

At 12 o'clock M. to day I found latitude  
 to be  $32^{\circ}54'N$ . and my compass  
 in good adjustment.

Subdivision T6S. R5E. continued  
 Chain

East on a sandrow line bet Secs 8 & 17

Var  $12^{\circ}49' E$ .

Over level ground

- 40.00 Set temporary  $\frac{1}{4}$  Sec cor.  
 53.90 Cross creek 25 lbs wide, course N.  
 79.90 Intersect N & S line 17 lbs S of the cor  
 to Secs 8, 9, 16 & 17

Fence Line

$S89^{\circ}53' W$ . on a true line bet Sec 8 and  
 17 with same Var.

- 39.95 Set a mesquite post 3 ft long 3 ins square  
 with marked stone 12 ins in the ground  
 for  $\frac{1}{4}$  Sec cor. marked  $\frac{1}{4}$  S on N. face  
 dug pits 18 x 18 x 12 ins E & W. of post  
 5  $\frac{1}{2}$  ft dist and raised a mound of  
 earth 1  $\frac{1}{2}$  ft high 3  $\frac{1}{2}$  ft base around post  
 79.90 The cor to Secs 7, 8, 17 & 18  
 Land level  
 Soil yellow loam 1<sup>st</sup> rate

## Subdivision T6 S. R5 E. Continued

Chains

Large sage and mesquite brush  
and greasewood entire mile.

West on a random line bet Secs 7 & 18  
Var.  $12^{\circ} 49' E$ .

Over level ground

40.00 Set temporary  $\frac{1}{4}$  Sec Cor.

78.90 Intersect First Auxiliary Meridian  
East, 51  $\frac{1}{2}$  m S of the Cor to Secs 7, 12  
13 and 18 previously established  
and described by me

Thence I run

$N 89^{\circ} 38' E$  on a true line bet Secs 7  
& 18 with same Var.

38.90 Set a mesquite post 3 ft long 3 in  
square with marked stone 12 in  
in the ground for  $\frac{1}{4}$  Sec Cor. marked  
 $\frac{1}{4}$  S on N. face, dug pits 18 X 18 X 12  
in E & W. of post  $5\frac{1}{2}$  ft dist and

Subdivision T. S. R. S. C. continued  
 names

raised a mound of earth  $1\frac{1}{2}$  ft high  $3\frac{1}{2}$  ft  
 base around post.

78.90 The cor to Secs 7, 8, 17 & 18

Level level

Soil yellow loam 1<sup>st</sup> rate

Dense greasewood, sage and  
 mesquite brush entire m. l.

North bit Secs 17 & 18

Var  $12^{\circ}49'E$

Over level ground

40.00 Set a mesquite post 3 ft long 3 in  
 square with marked stone 12 in in  
 the ground for  $\frac{1}{4}$  Sec cor. marked  
 $\frac{1}{4}$  S on W. face dry pits 78 X 18 X 12  
 in N & S of post  $5\frac{1}{2}$  ft dist and  
 raised a mound of earth  $1\frac{1}{2}$  ft high  
 $3\frac{1}{2}$  ft base around post.

80.00 Set a mesquite post 4 ft long 4 in

Subdivision of S. R. 5 E. continued  
Chains

square with marked stones 12 ins in  
the ground for cor. to Secs 5, 6, 7 & 8  
marked

S. 5 on N E

R 5 E. S. 8 on S E

S. 7 on S W and

S. 6 on N W. faces, with 5  
notches on S and E edges, dry  
pits 18 x 18 x 12 ins in each Sec  
5 1/2 ft diam and raised a mound  
of earth 2 ft high 7 1/2 ft base around  
post

Land level

Soil yellow loam 1<sup>st</sup> rate

Some brush entire mole.

East or a random line bet Secs 5 & 8

Var. 12° 48' E.

Over level ground



## Subdivision T. 6 S. R. 5 E. continued

Chain

- 12.00 Cross Santa Cruz river course  $N60^{\circ}W$ .  
 40.00 Set temporary  $\frac{1}{4}$  Sec. cor.  
 79.92 Intersect N & S line 44 Chs S of the  
 cor to Secs. 4, 5, 8 & 9

Thence I run

$S89^{\circ}41'W$ . on a true line bet Secs 5  
 and 8 with saw bar.

- 39.96 Set a mesquite post 3 ft long 3 ins  
 square with marked stone 12 ins  
 in the ground for  $\frac{1}{4}$  Sec. cor. marked  
 $\frac{1}{4}$  S on N. face, dry pits 15 x 15 x 12  
 ins E & W. of post  $5\frac{1}{2}$  ft dia and  
 raised a mound of earth  $1\frac{1}{2}$  ft  
 high  $3\frac{1}{2}$  ft base around post

- 79.92 The cor to Secs 5, 6, 7 & 8.

Land level

Soil yellow loam 1<sup>st</sup> rate

Some greasewood sage and mesquite  
 bush entire mile.

## Subdivision T. 6 S. R. 5 E. continued

Chains

Went on a random line bet Secs 6 & 7  
 Var.  $12^{\circ}48' E.$

Over level ground

40.00 Set temporary  $\frac{1}{4}$  Sec cor.

78.90 Intersect First Auxiliary Meridian  
 East 58 lks N of the Cor to Secs 1, 6, 7, and  
 12 previously established and  
 described by me.

Thence I run

$N 89^{\circ}35' E$  on a true line bet Secs  
 6 & 7 with same Var.

38.90 Set a mesquite post 3 ft long 3 ins  
 square with marked stone 12 ins  
 in the ground for  $\frac{1}{4}$  Sec cor. marked  
 $\frac{1}{4}$  S on N. face, dug pits  $18 \times 18 \times 12$   
 ins E & W. of post  $5\frac{1}{2}$  ft dist and  
 raised a mound of earth  $1\frac{1}{2}$  ft  
 high  $3\frac{1}{2}$  ft base around post.

78.90 The Cor to Secs 5, 6, 7 and 8

Subdivision T6 S. R 5 E. continued

Chain

Land level

Soil sedimentary 1<sup>st</sup> rate

Sense brush entire mile.

North on a true line bet Secs 5 & 6.

Var  $12^{\circ}48' E$ .

Over level ground.

8.00 Cross Santa Cruz river 80 lbs wide, course  
 $N 60^{\circ} W$ .

40.00 Set a mesquite post 3 ft long 3 ins  
square with marked stem 12 ins in  
the ground for  $\frac{1}{4}$  Sec Cor. marked '4 S  
on W. face, dug pits 15 x 15 x 12 ins N &  
S of post  $5\frac{1}{2}$  ft dist and raised a  
mound of earth  $1\frac{1}{2}$  ft high  $3\frac{1}{2}$  ft base  
around post

82.72 Intersect First Standard Parallel  
South 28 lbs E of the Standard Cor to Secs  
32 and 33 T5 S. R 5 E previously

Subdivision T.C. R 56. Continued  
 chain.

described by me

At this point I set a mosquito post  
 4 ft long 4 ins square with marked  
 stone 12 ins in the ground for  
 closing corner to Secs 5 & 6 marked  
 C.C. T.C. R 56 on S.

S 5 on E and

S 6 on W. face, with 5 notes  
 on E and <sup>1 note on</sup> W. edges, dry pits 18 X 18 X 12  
 ins S. E and W of post 5 1/2 ft dist  
 and raised a mound of earth 2 ft  
 high 4 1/2 ft base around post  
 Land level

Soil to run 1<sup>st</sup> rate

Sense break entire mile

Nov 2<sup>d</sup> 1887.

Subdivision T6 S. R5 E. Continued

Chaus

General Description

This township has a rich soil alluvial in nature and of great depth. The Santa Cruz river passes through the Township in well defined banks, but it carries no water except during the rainy season. There is a dense growth of sage brush mesquite and greasewood over almost the entire surface of the ground. The only improvement in the Tp. is that of Mr. Farbach in the NW 1/4 of Sec 11

Ridgely C. Powers

U. S. Deputy Surveyor.

BOOK 647 89

U. S. Surveyor-General's Office,

TUCSON, A. T., Feb. 16 1889

The foregoing Field Notes of the Surveys of  
subdivision lines of  
Township 6 South  
Range 5 East.

Gila and Salt River Meridian  
in Arizona executed by  
R. C. Powers

U. S. Deputy Surveyor, under his contract dated  
July 20<sup>th</sup> 1883  
having been critically examined, the necessary correc-  
tions and explanations made, the said Field Notes and  
the surveys they describe are hereby approved.

John H. S. H. H.  
U. S. Surveyor-General  
for the Territory of Arizona.