

ad
west
Cook

compar

No 15

+ see 709
No. 697

Field Notes

BOOK 697

OF THE SURVEY OF THE

SUDIVISION LINES

— OF —

Township 8 S Range 8 E

Gila and Salt River Base and Meridian

ARIZONA

By R. C. Pover D. S.

under contract dated July 20, 1883.

Survey commenced Dec 14, 1883.

Survey completed Dec 19, 1883.

~~Corrected~~

No. 697

697

Approved by Com^r G. L. C.
February 27, 1890.

11
Book No 15
T. S. R. & E.

BOOK 697 -

BOOK 697

INDEX.

Township 8 S, Range 8 E,

Gila and Salt River Meridian.

6	60	5	44	4	33	3	22	2	11	1
59		58		43		32				10
7	57	8	42	9	31	10	20	11	9	12
56		55		41		30		19		8
18	54	17	40	16	29	15	18	14	7	13
53		52		39		28		17		6
19	51	20	38	21	27	22	16	23	5	21
50		49		37		26		15		4
30	48	29	36	28	25	27	14	26	3	25
57		46		35		24		13		2
31	45	32	34	33	23	31	12	35	1	36

Referring the lines to the pages of the field notes.

is preliminary only see Book No. 1

Subdivision of T. & S. R 8 E.

chain

From the corner to Sec 1. 2. 35 & 36
on S. E. R 8 E. just recently established
by me, I now north to Sec 35 & 36

N 13° 10' E

4000

Set a post 3 ft. long 3 ins. diam. with marked
stone, 12 ins. in the ground for $\frac{1}{4}$ Sec, Cor,
marked $\frac{1}{4}$ S. on face, dug pits 18 x 18 x 12
ins. and of post 5 $\frac{1}{2}$ ft. dist. and raised
a mound of earth 1 $\frac{1}{2}$ ft. high. 3 $\frac{1}{2}$ ft. base. around
post.

8000

Set a post 4 ft. long 4 ins. square, with marked
stone, 12 ins. in the ground for Cor. to Secs,
25, 26, 35 & 36 marked T. 8 E S. 25 on
N. E. R. 8 E S. 36 on S. E. S. 35 on
S. W. and S. 26 on N. W. face, with 1 notch
on S, and 1 notch on E. edges, dug
pits 18 x 18 x 12 ins. in each Sec., 5 $\frac{1}{2}$ ft. dist.
and raised a mound of earth 2 ft. high. 4 $\frac{1}{2}$ ft.
base. around post.

Lead level, Soil 2^d note
same land the entire mile
range

Subdivisions of S.

chains

East on a random line bet.
Secs. 25 & 36.

$T = 130^{\circ} 10' E.$

4000 Set temporary $\frac{1}{4}$ sec. cor.

79.91 Intersect. E. by offset. 31 lbs

Ref cor. to Secs. 25, 26, 35 & 36

not recently established by me

same corner $89^{\circ} 57' 19''$

on a true line bet. Secs.

25 & 36. with same or

39.95

Set a post 3 ft. long 3 ins. diam with marked
stone, 12 ins. in the ground for $\frac{1}{4}$ Sec. Cor.
marked $\frac{1}{4}$ S. on N. face, dug pit 18 x 18 x 12
ins. E and W of post 5 ft. dist. and raised
a mound of earth $1\frac{1}{2}$ ft. high. $3\frac{1}{2}$ ft. base. around
post.

9.91

The cor. Secs. 25, 26, 35 & 36

Land level. Soil 2d rate
Dense brush the entire mile
some grass.

R. & E. continued

chain

North bet. Secs. 25 & 26

N. 10° 10' E

40.00

Set a post 3 ft. long 3 ins. diam with marked stone, 12 ins. in the ground for $\frac{1}{4}$ Sec. Cor, marked $\frac{1}{4}$ S. on N. face, dug pits 18 x 18 x 12 ins. N and S of post $5\frac{1}{2}$ ft. dist. and raised a mound of earth $1\frac{1}{2}$ ft. high. $3\frac{1}{2}$ ft. base. around post. from which an Ironwood pole. d.c. to S 40° E. 57 ch. dist. marked $\frac{1}{4}$ S. T.

80.00

Set a post 4 ft. long 4 ins. square, with marked stone, 12 ins. in the ground for Cor, to Secs. 25, 24, 25 & 26 marked T. & S. 24 on N. E. R. F. S. 25 on S. E. S. 26 on S. W. and S. 27 on N. W. face, with 2 notches on S, and 1 notch on E. edges, dug pits 18 x 18 x 12 ins. in each Sec., $5\frac{1}{2}$ ft. dist. and raised a mound of earth 2 ft. high. $4\frac{1}{2}$ ft. base. around post.

Land level set 2^d rate
 blume brush the entire mile
 some grass.

Subdivisions of S.

Claims

Set on a random line bet
Secs. 24 & 25

Pa 130° 10' E

4.65

S. P. R. R., S. 53° 58' E.

4.000

Set temporary 1/4 sec. cor.

80.04

Intersect E. By of Sp 10th S.
of cor to Secs. 19, 24, 25 & 30

just recently established
by me, & Lance Iron

S 89° 53' W. on a true line
bet. Secs. 24 & 25. with same on

40.02

Set a post 3 ft. long 3 ins. diam with marked
stone, 12 ins. in the ground for 1/4 Sec. Cor,
marked 1/4 S. on N. face, dug pits 18 x 18 x 12
ins. E and W of post 54 ft. dist and raised
a mound of earth 1 1/2 ft. high 3 1/2 ft. base. around
post.

80.04

Sp cor. to Secs. 23, 24, 25 & 26
Land level. Post set at
level of the entire mile

R & E. continued

Chains

North bet. Secs. 23 & 24
R₁₃ 13° 10' E.22 ft
3.80

4000

S. P. R. R. on S. 53° 58'
Set a post 3 ft. long 3 ins. diam. with marked
stone, 12 ins. in the ground for $\frac{1}{2}$ Sec. Cor.
marked $\frac{1}{2}$ S. on W. face, dug pits 18 x 18 x 12
ins. N and S of post $2\frac{1}{2}$ ft. dist. and raised
a mound of earth $1\frac{1}{2}$ ft. high $2\frac{1}{2}$ ft. base. around
post.

8000

Set a post 4 ft. long 4 ins. square, with marked
stone, 12 ins. in the ground for Cor. to Secs,
13, 14, 23 & 24 marked T.S. S. 13 on
N. E. R. 82 S. 24 on S. E. S. 23 on
S. W. and S. 14 on N. W. face, with 3 notch
on S. and 1 notch on E. edges. dug
pits 18 x 18 x 12 ins. in each Sec. $5\frac{1}{2}$ ft. dist.
and raised a mound of earth 2 ft. high $4\frac{1}{2}$ ft.base. around post. from ~~marked~~ and ~~iron~~ wood
12 ins. dia. on R. 37° 44' 175' dist. marked.
T. 8 S. R. 8 E. S. 14 B. C.
and level. Sp. 2 posts
These form the extreme with
some grass.12 m. True Latitude to be 37° 44' N. and
my inst. in adjustment—

Subdivisions of Sec.

chain

Part on a random line
bet. Secs. 19 & 24.

72° 13' 10" E.

40.00 Set temporary 1/4 sec. cor.

80.00 Intersect E. Ry of Sp 10 line S.
of cor. to Secs. 13, 18, 19 & 24.
Just recently established by us
since E. from S 89° 52' W.

on a true line bet. Secs. 13 & 24
with same va.

40.04 Set a post 3 ft. long 2 ins. diam with marked
stone, 12 ins. in the ground for 1/4 Sec. Cor,
marked E S. on N face, dug pits 18 x 18 x 12
ins. E and W. of post 3 1/2 ft. dist. and raised
a mound of earth 1 1/2 ft. high, 3 1/2 ft. base. around
post

80.09 The cor. to Secs. ~~13, 14, 23, 24~~
land level. Soil 2nd set
line back the entire mile
Some grass

R. & E. continued

chains

North bet. Secs. 13 & 14
Ta 10° 10' E.

40.00

Set a post 3 ft. long 3 ins. diam with marked stone, 12 ins, in the ground for $\frac{1}{4}$ Sec. Cor, marked $\frac{1}{4}$ S. on W face, dug pits 18 x 18 x 12 ins. N and S of post 5 $\frac{1}{2}$ ft. dist. and raised a mound of earth 1 $\frac{1}{2}$ ft. high. 3 $\frac{1}{2}$ ft. base. around post. from which bearing 105 m. due to N. 8° 02' 19" E. distance marked by 200 ft.

74.50

at Road & cleared for N. W.

80.50

Set a post 4 ft. long 4 ins. square, with marked stone, 12 ins, in the ground for Cor, to Secs. 11, 12, 13 & 14 marked L.P.S. - S. 12 on N. E. R. & S. 13 on S. E. S., 14 on S, W, and S. $\frac{1}{4}$ on N. W. face, with $\frac{1}{4}$ notch on S, and $\frac{1}{4}$ notch on E. edges, dug pits 18 x 18 x 12 ins. in each Sec., 5 $\frac{1}{2}$ ft. dist. and raised a mound of earth 2 ft. high. 4 $\frac{1}{2}$ ft. base. around post.

Lead level pit about
Musse tunnel the entire
with
some grass.

Subdivisions of

Chains

East on a random line
bet. Secs. 12 & 13.

To 13° 10' E

40.00 Set temporary 4 sec. cor.

79.87 Intersect E. By of Sp 21 the
N. of cor. to Secs. 7, 12, 13 & 18.

Just recently established
by me, Thence I run N 89° 37' W

on a true line bet. Secs. 12 & 13
with same or.

39.93 Set a post 3 ft. long 3 ins. diam with marked
stone, 12 ins. in the ground for 1/4 Sec, Cor,
marked 1/4 S. on N. face, dug pits 18 x 18 x 12
ins. E and W of post 5 1/2 ft. dist. and raised
a mound of earth 1 1/2 ft. high 3 1/2 ft. base around
post. from which a true line to the N. 13° 10' E 70
dist. marked 1/4 S. N. E.

79.87 The cor. to Secs. 11, 12, 13 & 14
land level, soil 2 ft. into
ground the entire mile.
same grass.

N & E continued

chains

North bet. Secs. 11 & 12

No 13^o 10th E

28.80

Road to Plouren on 11th Sec.

40.00

Set a post 3 ft. long 3 ins. diam. with marked stone, 12 ins. in the ground for $\frac{1}{4}$ Sec. Cor, marked $\frac{1}{4}$ S. on W face, dug pits 18 x 18 x 12 ins. N and S of post $5\frac{1}{2}$ ft. dist. and raised a mound of earth $1\frac{1}{2}$ ft. high. $3\frac{1}{2}$ ft. base. around post.

80.00

Set a post 4 ft. long 4 ins. square, with marked stone, 12 ins. in the ground for Cor, to Secs, 1, 2, 11 & 12 marked T. & S. S. 1 on N. E. R. & S. S. 12 on S. E. S. 11 on S, W, and S, 2 on N. W. face, with 5 notches on S, and 1 notch on E. edge, dug pits 18 x 18 x 12 ins. in each Sec., $5\frac{1}{2}$ ft. dist. and raised a mound of earth 2 ft. high. $4\frac{1}{2}$ ft. base. around post.

Sand level. Soil red oak
 timberland the entire mile
 some grass.

Subdivisions P.S.

chains

East in a straight line
bet. Secs. 1 & 12.

To $13^{\circ} 59' E$.

8.85 Road to Lawrence to $N 20^{\circ} E$

40.00 Set temporary ip sec. cor.

79.80 Intersect W. Coy of Sp. 21

lks N of cor. to Secs. 1, 6, 7 & 12

just recently established

by road, Lawrence same $N 89^{\circ} 51' W$

on a true line bet Secs.

1 & 12. with same va.

39.90 Set a post 3 ft. long 3 ins. diam with marked

stone, 12 ins, in the ground for $\frac{1}{4}$ Sec. Cor,

marked $\frac{1}{4}$ S. on N face, dug pits 18 x 18 x 12

ins. E. and W of post $5\frac{1}{2}$ ft. dist. and raised

a mound of earth $1\frac{1}{2}$ ft. high. $3\frac{1}{2}$ ft. base. around

post.

79.80 The cor. to Secs. 1, 2, 11, & 12.

Land level. Dredge 2nd rate

Quartz from the cut the

same ^{with} same goose.

W. S. E. continued

Chain

North on a random line
bet. Secs. 1 & 2.

N 13° 10' E

40.00 Set temporary, 4 sec. cor.

80.31 Intersect N Ry of tp. 19 lbs. E
of cor. W Secs. 1, 2, 35 & 36
just recently established
by me, at base on N 50° 08' E
in a line bet. Secs. 1 & 2
with canoe co.40.31 Set a post 3 ft. long 3 ins. diam with marked
stone, 12 ins, in the ground for $\frac{1}{2}$ Sec. Cor.
marked $\frac{1}{2}$ S. on W face, dug pits 18 x 18 x 12
ins. N and S. of post $5\frac{1}{2}$ ft. dist. and raised
a mound of earth $1\frac{1}{2}$ ft. high. $3\frac{1}{2}$ ft. base. around
post.80.31 The cor. W Secs. 1, 2, 11 & 12
sand level. Soil 2^d rate
have been the entire mile
Some grass.

Subdivisions of T. 8 S.

chain

From the cor. to Secs. 2, 3, 34 & 35
on S. Bay of Sp. first recently
established by me, Conn
North lat. Secs. 34 & 35 To 13° 10' E

40.00

Set a post 3 ft. long 3 ins. diam with marked
stone, 12 ins, in the ground for $\frac{1}{4}$ Sec, Cor,
marked $\frac{1}{4}$ S. on W face, dug pits 18 x 18 x 12
ins. N and S of post 5 $\frac{1}{2}$ ft. dist, and raised
a mound of earth 1 $\frac{1}{2}$ ft, high, 3 $\frac{1}{2}$ ft. base. around
post.

80.00

Set a post 4 ft. long 4 ins. square, with marked
stone, 12 ins, in the ground for Cor, to Secs;
26, 27, 34 & 35 - marked T. 8 S S. 26 on
N. E. R. 8 E S. 35 on S. E, S. 34 on
S, W, and S, 27 on N, W, face, with 1 notch
on S, and 2 notches on E. edges, dug
pits 18 x 18 x 12 ins. in each Sec., 5 $\frac{1}{2}$ ft. dist.
and raised a mound of earth 2 ft, high, 4 $\frac{1}{2}$ ft.
base. around post.

and level, Set 2 $\frac{1}{2}$ gate
across the entire mile

(Some grass)

Dec. 14, 1883

R. & E. continued

chains

East on a random line bet.

Secs. 26 + 35

$\text{Ta } 13^{\circ} 10' \text{ E}$

4000 Set temporary $\frac{1}{4}$ sec. cor.

79.81. Intersect N.E. line 19th

W. of cor. to Secs. 25, 26, 35 & 36

Thence I run

$\text{N } 89^{\circ} 52' \text{ W.}$ on a true line

bet. Secs. 26 + 35. with same

va.

39.90

Set a post 3 ft. long 3 ins. diam with marked stone, 12 ins. in the ground for $\frac{1}{4}$ Sec. Cor.

marked $\frac{1}{4}$ S. on W face, dug pits 18 x 18 x 12 ins. E and W of post $5\frac{1}{2}$ ft. dist. and raised

a mound of earth $1\frac{1}{2}$ ft. high. $3\frac{1}{2}$ ft. base. around post.

79.81

The cor. to Secs. 26, 27, 34 + 35.

Level level, Soil 2^d set
same mark the entire mile

some grass.

Subdivisions

chain

North bet. Secs. 26 & 27

Ta 13° 10' 2"

40.00

Set a post 3 ft. long 3 ins. diam with marked stone, 12 ins. in the ground for $\frac{1}{4}$ Sec, Cor. marked $\frac{1}{4}$ S. on W. face, diameter 18 x 18 x 12 ins. N and S of post 5 $\frac{1}{2}$ ft. dist. and raised a mound of earth 1 $\frac{1}{2}$ ft. high, 3 $\frac{1}{2}$ ft. base. around

post. from road 2 May. 1871. We
 in 50° E. 157 lbs dist. marked $\frac{1}{4}$ S. P.

80.00

Set a post 4 ft. long 4 ins. square, with marked stone, 12 ins. in the ground for Cor, to Secs, 22, 23, 26 & 27 marked T. 85 S. 23 on N. E. R. & E S. 26 on S. E, S, 27 on S, W. and S, 22 on N. W. face, with 2 notches on S. and 2 notches on E. edges, dug pits 18 x 18 x 12 ins. in each Sec., 5 $\frac{1}{2}$ ft. dist. and raised a mound of earth 2 ft. high, 4 $\frac{1}{2}$ ft. base. around post.

Land level. Soil 2^d coat
 cleared the entire mile
 some grass.

R & E. continued

chains

East on a random line
bet. Secs. 23 & 26.

33.40 a Road to N. W. & S. E. Ta 13° 09' E

40.00 Set temporary $\frac{1}{4}$ sec. cor.

79.97 Intersect N & S line 17 lks N
of cor. to Secs. 23, 24, 25 & 26
Thence I run N 89° 50' W. on
a true line bet. Secs. 23 & 26
with same va.

39.98 Set a post 3 ft. long 3 ins. diam with marked
stone, 12 ins. in the ground for $\frac{1}{4}$ Sec. Cor,
marked $\frac{1}{4}$ S. on N face, dug pits 18 x 18 x 12
ins. E and W of post 5 $\frac{1}{2}$ ft. dist. and raised
a mound of earth 1 $\frac{1}{2}$ ft. high, 3 $\frac{1}{2}$ ft. base. around
post.

79.97 The Cor. to Secs. 22, 23, 26 & 27.
Land level, Soil 29' sat
thence toward the center mile
some grass.

Subdivisions N.S.

chains

North bit. Secs. 22 & 23
T_a 13° 09' 2

40.00

Set a post 3 ft. long 3 ins. diam with marked stone, 12 ins. in the ground for $\frac{1}{4}$ Sec. Cor, marked $\frac{1}{4}$ S. on W face, dug pits 18 x 18 x 12 ins. N and S of post $5\frac{1}{2}$ ft. dist. and raised a mound of earth $1\frac{1}{2}$ ft. high $3\frac{1}{2}$ ft. base. around post. from which a $\frac{1}{4}$ Sec. 24 im. d. in $2\frac{1}{2}$ E 186 the dist. marked $\frac{1}{4}$ S. B. S.

63.03

S. P. R. R. at the Picacho Sta.

64.10

Stonehouse Sta. Office E. of line.

80.00

Sectionhouse N. of line

Set a post 4 ft. long 4 ins. square, with marked stone, 12 ins. in the ground for Cor. to Secs, 14, 15, 22 & 23 marked T. 8 S S. 14 on N. E. R. 8 E S. 23 on S. E. S. 22 on S. W. and S. 15 on N. W. face, with 3 notches on S, and 2 notches on E. edges, dug pits 18 x 18 x 12 ins. in each Sec. $5\frac{1}{2}$ ft. dist. and raised a mound of earth 2 ft. high $4\frac{1}{2}$ ft. base. around post. from which

A $\frac{1}{4}$ Sec. 24 im. d. in $2\frac{1}{2}$ E 186 the dist. marked $\frac{1}{4}$ S. B. S.

Land level. Soil is out
since much the substream
some grass.

R & E. continued

Chains

East on a random line bet.
Secs. 14 & 23.

$\text{Va } 13^{\circ} 09' \text{ E.}$

40.00 Set temporary $\frac{1}{4}$ sec. cor.

80.10 Intersect N & S. line 23^{1/2} S. of
Cor. to Secs. 13, 14, 23 & 24.

Hence I run $3^{\circ} 89' 58'' \text{ W.}$
on a true line bet. Secs. 14 & 23.
with same va.

40.05

Set a post 3 ft. long 3 ins. diam with marked
stone, 12 ins, in the ground for $\frac{1}{4}$ Sec, Cor,
marked $\frac{1}{4}$ S. on N face, dug pit 18 x 18 x 12
ins. E and W of post $5\frac{1}{2}$ ft. dist and raised
a mound of earth $1\frac{1}{2}$ ft. high. $3\frac{1}{2}$ ft. base. around
post.

80.10

The cor. to Secs. 14, 15, 22 & 23
land level. Soil 2^d rate
since found the entire mch
same grass.

Subdivisions of S.

chains

North bet. Secs. 14 & 15

Ra 13° 10' E

4000

Set a post 3 ft. long 3 ins. diam with marked stone, 12 ins. in the ground for $\frac{1}{2}$ Sec. Cor, marked $\frac{1}{2}$ S. on W face, dug pits 18 x 18 x 12 ins. N and S of post 5 $\frac{1}{2}$ ft. dist. and raised a mound of earth 1 $\frac{1}{2}$ ft. high, 3 $\frac{1}{2}$ ft. base. around post.

8000

Set a post 4 ft. long 4 ins. square, with marked stone, 12 ins. in the ground for Cor. to Secs. 10, 11, 14 & 15 marked T. 8 S. 11 on N. E. R. 8 E S. 14 on S. E. S. 15 on S, W, and S, 10 on N, W, face; with 4 notches on S, and 2 notches on E. edges, dug pits 18 x 18 x 12 ins. in each Sec., 5 $\frac{1}{2}$ ft. dist. and raised a mound of earth 2 ft. high, 4 $\frac{1}{2}$ ft. base. around post.

from which a 2000 ft. line was run. 4. 50 W. 7. lbs dist. marked T. 8 S. 14 E. S. 15 W. P.

Land level. Soil and water level marked the entire mile same goes.

R & L. continued

chains

East on a random line bet.
Secs. 11 & 14

γ a $13^{\circ}10' E.$

- 40.00 Set temporary $\frac{1}{4}$ sec. cor.
 41.42 arroyo bet R 19 W. 10 lks north
 63.10 Road to Ranch bet S. 2
 72.85 N. W. Side of Ranch House thru
 through house.
 73.30 N. E. Side of House —
 79.94 Intersect N & S line of the R of
 Cor. to Secs. 11, 12, 13 & 14. Thence
 Run N $89^{\circ}58' W.$ on a true line
 bet. Secs. 11 & 14 on the same —
 39.97 Set a post 3 ft. long 3 ins. diam with marked
 stone, 12 ins. in the ground for $\frac{1}{4}$ Sec. Cor,
 marked $\frac{1}{4}$ S. on N face, dug pits 18 x 18 x 12
 ins. E and W of post $5\frac{1}{2}$ ft. dist. and raised
 a mound of earth $1\frac{1}{2}$ ft. high $3\frac{1}{2}$ ft. base around
 post.
 79.94 In cor. to Secs. 10, 11, 14 & 15.
 Sand level, Soil 2nd rate
 some brush the entire mile
some grass.

Subdivisions of S.

chains

North bet. Secs. 10 + 11

Ta $13^{\circ} 10' E$.

24.35 Road to Raul to S 550 E.

4000 Set a post 3 ft. long 3 ins. diam. with marked stone, 12 ins. in the ground for $\frac{1}{4}$ Sec. Cor. marked $\frac{1}{4}$ S. on W face, dug pits 18 x 18 x 12 ins. N and S of post $5\frac{1}{2}$ ft. dist. and raised a mound of earth $1\frac{1}{2}$ ft. high $3\frac{1}{2}$ ft. base. around post. from which a mag. 14 in. dia. bearing $11^{\circ} 47' N. 10^{\circ}$ lbs. dist. marked $\frac{1}{4}$ S. B. S.

8000

Set a post 4 ft. long 4 ins. square, with marked stone, 12 ins. in the ground for Cor. to Secs. 2, 3, 10 + 11 marked T. 85 S. 2 on N. E. R. 85 S. 11 on S. E. S. 10 on S. W. and S. 3 on N. W. face, with 5 notches on S. and 2 notch ∞ on E. edges, dug pits 18 x 18 x 12 ins. in each Sec., $5\frac{1}{2}$ ft. dist. and raised a mound of earth 2 ft. high $4\frac{1}{2}$ ft. base. around post.

Land level. Soil 24 rods
dense brush the entire mile
some grass.

R & E. continued

chains

East on a random line bet.
Secs. 2 & 11

N a $13^{\circ} 10' E$

20.00

a Hank yellow rock br N $10^{\circ} W$.

24.60

a Road br $S 20^{\circ} E$. & N $20^{\circ} W$.

40.00

Set temporary $1/4$ sec. cor.

80.04

Intersect road line 21 lbs N.
of cor. to Secs. 1, 2, 11 & 12

Thence down N $89^{\circ} 51' W$. on
a true line bet. Secs. 2 & 11
with same ve.

40.02

Set a post 3 ft. long 3 ins. diam with marked
stone, 12 ins, in the ground for $1/4$ Sec. Cor,
marked $1/4 S$. on N face, dug pits 18 x 18 x 12
ins. E and W of post 5 $1/2$ ft. dist. and raised
a mound of earth $1 1/2$ ft. high $3 1/2$ ft. base. around
post. from which a bearing to 15 ins.
dia. br N $85^{\circ} W$. 7 lbs dist. marked
 $1/4 S. P.T.$

80.04

The cor. to Secs. 2, 3, 10 & 11
Land level, Soil 2^d rate.
Thence back the course north
some grass.

Subdivisions No. 85

chains

North in a random line
bet. Secs. 2 & 3

Ca $13^{\circ} 10' E$.

40.00 Set temporary $\frac{1}{4}$ sec. cor.

80.25 Intersect N. Boundary of Sp.

blks W. of cor. to Secs. 2, 3, 34 & 35

just recently set ablished by law

Thence down $80^{\circ} 7' W$. on a

true line bet. Secs. 2 & 3. with

same va.

40.25 Set a post 3 ft. long 3 ins. diam with marked

stone, 12 ins. in the ground for $\frac{1}{4}$ Sec. Cor.

marked $\frac{1}{4}$ S. on W face, dug pits 18 x 18 x 12

ins. N and S of post $5\frac{1}{2}$ ft. dist. and raised

a mound of earth $1\frac{1}{2}$ ft. high $3\frac{1}{2}$ ft. base around

post.

80.25 The cor. to Secs. 2, 3, 10 & 11

Land level Soil 2^d rate

Dense brush the entire work

some grass.

R. S. continued

- Chain From the cor. to Secs. 3, 4, 33 & 34 on
S. B₂ of T₂P. just recently established
by me, from north bet. Secs.
33 & 34. $\theta = 13^{\circ} 10' 2$
- 40.00 Set a post 3 ft. long 3 ins. diam with marked
stone, 12 ins. in the ground for $\frac{1}{4}$ Sec, Cor,
marked $\frac{1}{4}$ S, on W face, dug pits 18 x 18 x 12
ins. N and S of post 5 $\frac{1}{2}$ ft. dist. and raised
a mound of earth 1 $\frac{1}{2}$ ft. high, 3 $\frac{1}{2}$ ft. base, around
post.
- 80.00 Set a post 4 ft. long 4 ins. square, with marked
stone, 12 ins. in the ground for Cor, to Secs,
27, 28, 33 & 34 marked T. 85 S. 27 on
N. E. R. 82 S. 34 on S. E. S₂ 33 on
S, W, and S, 28 on N, W, face, with 1 notch
on S, and 0 notch on E. edges, dug
pits 18 x 18 x 12 ins. in each Sec., 5 $\frac{1}{2}$ ft. dist.
and raised a mound of earth 2 ft. high, 4 $\frac{1}{2}$ ft.
base, around post.
Land level. Soil 2^d rate
Dune bank the entire mile
Dune grass.

Subdivisions of 80.

chains

East on a random line, bet.
Secs. 27 & 34.

N $13^{\circ} 09' E$

40.00 Set temporary $\frac{1}{4}$ sec. cor.

80.15 Intersect N & line 16 lbs Sof
cor. to Secs. 26, 27, 34 & 35.

Thence I run

$S. 89^{\circ} 53' W.$ on a true line
bet. Secs. 27 & 34. with same

40.07 Set a post 3 ft. long 3 ins. diam with marked
stone, 12 ins. in the ground for $\frac{1}{4}$ Sec. Cor,
marked $\frac{1}{4}$ S. on N face, dug pits 18 x 18 x 12
ins. E and W of post 5 $\frac{1}{2}$ ft. dist. and raised
a mound of earth 1 $\frac{1}{2}$ ft. high, 3 $\frac{1}{2}$ ft. base. around
post.

80.15 The cor. to Secs. 27, 28, 33, & 34
Land level Soil 2^d rate
Some brush the entire mile
Some grass.

Dec. 15, 1883.

R. & E. continued

chain

North bet. Secs. 27 + 28

No. 13° 10' E

40.00

Set a post 3 ft. long 3 ins. diam with marked stone, 12 ins. in the ground for $\frac{1}{4}$ Sec. Cor., marked $\frac{1}{4}$ S. on W face, dug pits 18 x 18 x 12 ins. N and S of post $5\frac{1}{2}$ ft. dist. and raised a mound of earth $1\frac{1}{2}$ ft. high. $3\frac{1}{2}$ ft. base, around post.

68.20

a Road bet. N. 2

80.00

Set a post 4 ft. long 4 ins. square, with marked stone, 12 ins. in the ground for Cor. to Secs. 21, 22, 27 & 28 marked T. & S. S. 22 on N. E. R. & S. 27 on S. E., S. 28 on S. W. and S. 21 on N. W. face, with 2 notch $\frac{1}{2}$ on S, and 3 notch $\frac{1}{2}$ on E. edges, dug pits 18 x 18 x 12 ins. in each Sec., $5\frac{1}{2}$ ft. dist. and raised a mound of earth 2 ft. high. $4\frac{1}{2}$ ft. base, around post.

Land bet. Post 2 & 3
 have been the entire mole
 some grass.

Subdivisions of S.

Chains

East on a random line
bet. Secs. 22 + 27.

Va 13° 09' E.

22.85 Road to N. E.

40.00 Set temporary 1/4 sec. cor.

80.20 Intersect Nat. line 17 Chs S.
of cor. to Secs. 22, 23, 26 + 27

Thence I run

S 89° 53' W. on a true line
bet. Secs. 22 + 27. with same on40.10 Set a post 3 ft. long 3 ins. diam with marked
stone, 12 ins. in the ground for 1/4 Sec, Cor,
marked + S. on N. face, dug pits 18 x 18 x 12
ins. E and W of post 5 1/4 ft. dist. and raised
a mound of earth 1 1/4 ft. high. 3 1/4 ft. base around
post. from which 2 true 12 ins. dia ln
S 71° E. 97 Chs dist marked 1/4 S. P. S.80.20 The cor. to Secs. 21, 22, 27 + 28
land level, Soil 2^d rate
Stump about the entire mile
some grass.

R. 8 E. continued

chains

North bet. Secs. 21 + 22
 α $13^{\circ} 10' E$

40.00

Set a post 3 ft. long 3 ins. diam with marked stone, 12 ins. in the ground for $\frac{1}{4}$ Sec. Cor, marked $\frac{1}{4}$ S. on W face, dug pits 18 x 18 x 12 ins. N and S of post $5\frac{1}{2}$ ft. dist. and raised a mound of earth $1\frac{1}{2}$ ft. high. $3\frac{1}{2}$ ft. base. around post. from which 2 W. ang. lines dia. by $2450 E. 38$ lbs dist marked $\frac{1}{4}$ S. B. T.

80.00

Set a post 4 ft. long 4 ins. square, with marked stone, 12 ins. in the ground for Cor. to Secs. 15. 16. 21 + 22 marked T. 88 S. 15 on N. E. R. 8 E S. 22 on S. E. S. 21 on S, W, and S, 16 on N, W, face, with 3 notches on S, and 3 notches on E. edges, dug pits 18 x 18 x 12 ins. in each Sec., $5\frac{1}{2}$ ft. dist. and raised a mound of earth 2 ft. high. $4\frac{1}{2}$ ft. base. around post.

Land level. Soil 2nd rate
 some brush the entire run
 some grass.

12 m I find latitude to be $32^{\circ} 46' N$. and my inst. in adjustment -

Subdivisions of S.

chains

East on a random line bet.
Secs. 15 & 22.

To $13^{\circ} 09' E$.

40.00 Set temporary $\frac{1}{4}$ sec. cor.

57.41 S. P. R. R. hrs S. $53^{\circ} 58' E$.

80.19 Intersect R & S line 14 rods S. of
cor. to Secs. 14, 15, 22 & 23.

Thence S. 89° 54' W.

on a true line

bet. Secs. 15 & 22. with same

40.09 Set a post 3 ft. long 3 ins. diam with marked
stone, 12 ins. in the ground for $\frac{1}{4}$ Sec. Cor.
marked $\frac{1}{4}$ S. on the face, dug pits 18 x 18 x 12
ins. E and W of post $5\frac{1}{2}$ ft. dist. and raised
a mound of earth $1\frac{1}{2}$ ft. high, $3\frac{1}{2}$ ft. base. around
post from which

an Ironwood, 4 in. dia. to S. 10° W. 60 lbs dist. marked off S. P. R.
West 79° 1/2 S. P. R.

80.19 The cor. to Secs. 15, 16, 21 & 22

Land level. Soil 2^d rat
line mark the entire mole
some grass.

R & E. continued

chains

North bet. Secs. 15 & 16

γ a $13^{\circ} 10' E$

41.75

S. P. R. R. to S. $53^{\circ} 58' E$.

4.00

Set a post 3 ft. long 3 ins. diam with marked stone, 12 ins, in the ground for $\frac{1}{4}$ Sec. Cor. marked $\frac{1}{2}$ S. on W face, dug pits 18 x 18 x 12 ins. N and S. of post $5\frac{1}{2}$ ft. dist. and raised a mound of earth $1\frac{1}{2}$ ft. high, $3\frac{1}{2}$ ft. base around post. from which a Merquest 12 ins. dia. to S. 30. 27. 34 lbs dist. marked $\frac{1}{4}$ S. B.

41.75

80.00

Set a post 4 ft. long 4 ins. square, with marked stone, 12 ins, in the ground for Cor. to Secs. 9, 10, 15 & 16 marked T. 85 S. 10 on N. E. R. 82 S. 15 on S. E. S, 16 on S, W, and S, 9 on N, W, face, with 4 notch $\frac{1}{2}$ on S, and 3 notch $\frac{1}{2}$ on E. edges, dug pits 18 x 18 x 12 ins. in each Sec., $5\frac{1}{2}$ ft. dist. and raised a mound of earth 2 ft. high, $4\frac{1}{2}$ ft. base. around post. from which a Merquest 12 ins. dia. to S. 30. 27. 34 lbs dist. marked $\frac{1}{4}$ S. B.

Land level. Soil 2^d rate
 dense brush the timber mile
 some grass.

Subdivision 88

chains

East on a random line bet
Secs. 10 & 15.

To $13^{\circ} 09' E$.

4.000 Set temporary $\frac{1}{4}$ sec. cor.

79.85 Intersect ~~the~~ line 21 chs N.
of cor. to Secs. 10, 11, 14 & 15.

Thence S. 100°

N $89^{\circ} 57' W$, on a true line bet
Secs. 10 & 15, with same or.

39.92 Set a post 3 ft. long 3 ins. diam with marked
stone, 12 ins. in the ground for $\frac{1}{4}$ Sec, Cor,
marked $\frac{1}{4}$ S. on N face, dug pits 18 x 18 x 12
ins. E and W of post $5\frac{1}{2}$ ft. dist. and raised
a mound of earth $1\frac{1}{2}$ ft. high, $3\frac{1}{2}$ ft. base around
post.

79.85 The cor. bet Secs. 9, 10, 15 & 16.
Sand level. Soil 2^d rate
Dune bank the section with
same grass.

R & E. continued

Chains

North bet. Secs. 9 & 10

T₂ 13° 10' E

4000

Set a post 2 ft long, 3 ins. diam with marked stone, 14 ins. in the ground for 1/2 Sec, Cor, marked 2 S. on W face, dug pits 18 x 18 x 12 ins. N and S of post 5 1/2 ft. dist. and raised a mound of earth 1 1/2 ft. high, 3 1/2 ft. base. around post. from which a Meas. 10 ins. dia. by 5 50° E. 103 lbs dist. marked 1/4 S.D. T.

8000

Set a post 4 ft. long 4 ins. square, with marked stone, 12 ins. in the ground for Cor, to Secs, 3, 4, 9 & 10 marked T. 8 S. 0 on N. E. R. 8 E S. 10 on S. E. S. 9 on S. W. and S. 4 on N. W. face, with 5 notch on S. and 3 notch on E. edges, dug pits 18 x 18 x 12 ins. in each Sec., 5 1/2 ft. dist. and raised a mound of earth 2 ft. high, 4 1/2 ft. base. around post. from which a Meas. 8 ins. dia. by 5 37° W. 104 lbs dist. marked T. 8 S. R. 8 S. 9 S. 8 S. and level. Soil 2^d rate. some wood the entire mile some grass

Subdivisions P. S.

chains

East on a random line bet.
Secs. 3 & 10.

$N 13^{\circ} 09' E$

13.70 Road to Ranch br. $S 58^{\circ} E$

40.00 Set temporary $\frac{1}{4}$ sec. cor.

80.06 Intersect N & S line 12 lbs N.
of cor. to Secs. 2, 3, 10 & 11.

Thence I ran $N 89^{\circ} 55' W$
on a true line bet. Secs.
3 & 10. with same os.

40.03 Set a post 3 ft. long 3 ins. diam with marked
stone, 12 ins. in the ground for $\frac{1}{4}$ Sec. Cor.
marked $\frac{1}{4}$ S. on N face, dug pits 18 x 18 x 12
ins. E and W of post $5\frac{1}{2}$ ft. dist. and raised
a mound of earth $1\frac{1}{2}$ ft. high, $3\frac{1}{2}$ ft. base around
post.

80.06 The cor. to Secs. 3, 4, 9 & 10
land level. Soil 2^d rate
bees brush. the entire mile
some grass.

No. 697

R. S. E. continued

chains

North on a random line
bet. Secs. 3 & 4.

1000

Road to case-grande N. W.

40.00

Set temporary $\frac{1}{4}$ sec. cor.

80.27

Intersect N. By of Sp. 17 lbs.

W of cor. to Secs. 9, 4, 33 & 24

point recently established
by me. Then I runS 0° 7' W on a true line bet.

Secs. 3 & 4, with same va.

40.27

Set a post 3 ft. long 3 ins. diam with marked
stone, 12 ins. in the ground for $\frac{1}{4}$ Sec. Cor.
marked N. S. on W face, dug pits 18 x 18 x 12
ins. N and S of post 5 $\frac{1}{2}$ ft. dist. and raised
a mound of earth 1 $\frac{1}{2}$ ft. high, 3 $\frac{1}{2}$ ft. base, ground
post.

80.27

The cor. to Secs. 3, 4, 9 & 10.

Land level, soil 2 $\frac{1}{2}$ sat.

Lined with the entire circle

some grass.

Subdivisions of Sec

Chain From the corner to Secs. 4, 5, 32 & 33
 on S. Bay of Sp. just recently established
 by me I run North bet. Secs 32 & 33
 No 130102

4000 Set a post 3 ft. long 3 ins. diam with marked
 stone, 12 ins, in the ground for $\frac{1}{4}$ Sec, Cor,
 marked $\frac{1}{4}$ S. on W face, dug pits 18 x 18 x 12
 ins. N and S of post $5\frac{1}{4}$ ft. dist. and raised
 a mound of earth $1\frac{1}{2}$ ft. high. $3\frac{1}{4}$ ft. base. around
 post.

8000 Set a post 4 ft. long 4 ins. square, with marked
 stone, 12 ins, in the ground for Cor, to Secs,
 28, 29, 32 & 33 marked T. 8 S S. 28 on
 N. E. R. 8 S S. 35 on S. E, S, 32 on
 S, W, and S, 29 on N, W, face, with 1 notch
 on S, and 4 notch 20 on E. edges; dug
 pits 18 x 18 x 12 ins. in each Sec., $5\frac{1}{4}$ ft. dist.
 and raised a mound of earth 2 ft. high. $4\frac{1}{2}$ ft.
 base. around post.

Land level, Soil 2^d rate
 dense brush the entire area
 some grass.

R & E. continued

chains

East on a random line bet.
Secs. 28 & 33

va 13° 10' E

4000 Set temporary 1/4 sec. cor.
79.87 Intersect N.E. line 19 lbs N.
of cor. to Secs. 27, 28, 33 & 34
Thence run N 89° 52' W on
a random line bet. Secs.
28 & 33. with same va.

39.93 Set a post 3 ft. long 3 ins. diam with marked
stone, 12 ins, in the ground for 1/4 Sec, Cor,
marked 1/4 S. on N face, dug pits 18 x 18 x 12
ins. E and W of post 5 1/2 ft. dist. and raised
a mound of earth 1 1/2 ft. high. 3 1/2 ft. base. around
post.

79.87 The cor. to Secs. 28, 29, 32 & 33.
Land level. Soil 2" rate
lease brush the entire with
same grass.

Subdivisions No. 8.

Chains

North let. Secs. 28+29.

No 13° 10' E

28.10

a Road to N. E

40.00

Set a post 3 ft. long 3 ins. diam with marked stone, 12 ins. in the ground for $\frac{1}{4}$ Sec. Cor. marked $\frac{1}{4}$ S. on W face, dug pits 18 x 18 x 12 ins. N and S of post $5\frac{1}{2}$ ft. dist. and raised a mound of earth $1\frac{1}{2}$ ft. high. $3\frac{1}{2}$ ft. base. around post.

80.00

Set a post 4 ft. long 4 ins. square, with marked stone, 12 ins. in the ground for Cor. to Secs. 20. 21. 28+29 marked T. & S. S. 21 on N. E. R. & S. 28 on S. E. S. 29 on S. W. and S. 20 on N. W. face, with 2 notches on S, and 4 notch 20 on E. edges, dug pits 18 x 18 x 12 ins. in each Sec., $5\frac{1}{2}$ ft. dist. and raised a mound of earth 2 ft. high. $4\frac{1}{2}$ ft. base. around post.

Land level. Soil 2^d rate
Dune Road the entire mile
some grass.

Dec 17. 1883.

R. S. E. continued

chains

East on a random line bet.
Secs. 21 & 28.

$T = 13^{\circ} 10' E.$

40.00 Set temporary $\frac{1}{4}$ sec. cor.

79.85 Intersect N. S. line 15 lbs N of
cor. to Secs. 21, 22, 27 & 28.

Then I run $R 89^{\circ} 54' W.$ on
a true line bet. Secs. 21 & 28.
with same va.

39.92

Set a post 3 ft. long 3 ins. diam with marked
stone, 12 ins, in the ground for $\frac{1}{4}$ Sec, Cor,
marked $\frac{1}{4}$ S. on R face, dug pits 18 x 18 x 12
ins. E and W of post $5\frac{1}{2}$ ft. dist. and raised
a mound of earth $1\frac{1}{2}$ ft. high, $3\frac{1}{2}$ ft. base. around
post.

79.85

The cor. to Secs. 20, 21, 28 & 29.
Land level. Soil 2^d set
since both the entire work
is gone.

Subdivisions of 80

chains

North lat. Secs. 20 & 21

T_a 13° 10' E6.00
14.00
40.00

Enter

Santa Cruz River to N. W.

leave bottom.

bottom

Set a post 3 ft. long 3 ins. diam with marked stone, 12 ins. in the ground for $\frac{1}{4}$ Sec. Cor. marked $\frac{1}{4}$ S. on W face, dug pits 18 x 18 x 12 ins. N. and S. of post $5\frac{1}{2}$ ft. dist. and raised a mound of earth $1\frac{1}{2}$ ft. high, $3\frac{1}{2}$ ft. base. around post.

80.00

Set a post 4 ft. long 4 ins. square, with marked stone, 12 ins. in the ground for Cor. to Secs.

16, 17, 20 & 21 marked T. 8 S. S. 16 on

N. E. R. 8 E S. 21 on S. E. S. 20 on

S. W. and S. 17 on N. W. face, with 3 notches

on S. and 4 notches on E. edges, dug

pits 18 x 18 x 12 ins. in each Sec., $5\frac{1}{2}$ ft. dist.and raised a mound of earth 2 ft. high, $4\frac{1}{2}$ ft.

base. around post.

Land level, Soil 2^d rate.

Secure border the entire with
some grass.

N & E. continued

chain

East on a random line bet.

Secs. 16 & 21

72 13° 09' E.

4000 Set temporary 1/4 sec. cor.

79.99 Intersect N.E. line 16 lbs N.
of cor. to Secs. 15, 16, 21 & 22.

Thence I run

N 89° 53' W. on a true line
bet. Secs. 16 & 21. with same
ra.

39.99

Set a post 3 ft. long 3 ins. diam with marked
stone, 12 ins. in the ground for 1/4 Sec, Cor,
marked 1/4 S. on N face, dug pits 18 x 18 x 12
ins. E and W of post 5 1/2 ft. dist. and raised
a mound of earth 1 1/2 ft. high, 3 1/2 ft. base. around
post.

79.99

The cor. to Secs. 16, 17, 20 & 21
Land level. Soil 2 d. set
level around the entire
with
dune grass.

Subdivisions of P.S.

Chadron

North bet. Secs. 16 & 17.

Ta 13° 09' E.

4000

Set a post 3 ft. long 3 ins. diam with marked stone, 12 ins. in the ground for $\frac{1}{4}$ Sec. Cor. marked $\frac{1}{4}$ S. on W. face; dug pits 18 x 18 x 12 ins. N and S of post $5\frac{1}{2}$ ft. dist. and raised a mound of earth $1\frac{1}{2}$ ft. high, $3\frac{1}{2}$ ft. base. around post.

8000

Set a post 4 ft. long 4 ins. square, with marked stone, 12 ins. in the ground for Cor. to Secs. 8, 9, 16 & 17 marked T. 8 S S. 9 on N. E. R. 8 S S. 16 on S. E. S. 17 on S. W. and S. 8 on N. W. face, with 4 notches on S. and 4 notches on E. edges, dug pits 18 x 18 x 12 ins. in each Sec., $5\frac{1}{2}$ ft. dist. and raised a mound of earth 2 ft. high, $4\frac{1}{2}$ ft. base. around post.

Land level, Soil 2^d set.
Since land the entire north
some grass.

R. & E. continued

Chain

East on a random line bet.
Secs. 9 & 16.

To $13^{\circ} 10' E.$

33.00

S. P. R.R. to $53^{\circ} 58' E.$

40.00

Set temporary $\frac{1}{4}$ sec. cor.

79.78

Intersect N.S. line 29 lbs N.
of cor. to Secs. 9, 10, 15 & 16.

Thence I run N $89^{\circ} 48' W.$

on a true line bet Secs. 9 & 16
with same on.

39.89

Set a post 3 ft. long 3 ins. diam with marble
stone, 12 ins. in the ground for $\frac{1}{4}$ Sec. Cor,
marked $\frac{1}{4}$ S. on N face, dug pits 18 x 18 x 12
ins. E and W of post 5 $\frac{1}{2}$ ft. dist. and raised
a mound of earth $1\frac{1}{2}$ ft. high, $3\frac{1}{2}$ ft. base. around
post. from which a Mesquite 6 in.
dia. to N $10^{\circ} W.$ 36 lbs dist marked
 $\frac{1}{4}$ S. B. T.

79.78

The corner to Secs. 8, 9, 16 & 17
land level Soil 2' of set
some brush the entire mile
some grass

Subdivisions

chains

North bet. Secs. 8 & 9

Ta 13° 10' E

21.00

S. P. R. R. Co S. 83° 58' E

4.00

Set a post 3 ft. long 3 ins. diam with marked stone, 12 ins, in the ground for $\frac{1}{4}$ Sec. Cor, marked $\frac{1}{4}$ S. on W face, dug pits 18 x 18 x 12 ins. N and S of post $5\frac{1}{4}$ ft. dist. and raised a mound of earth $1\frac{1}{4}$ ft. high. $3\frac{1}{4}$ ft. base. around post.

8.00

Set a post 4 ft. long 4 ins. square, with marked stone, 12 ins, in the ground for Cor, to Secs.

4, 5, 8 & 9 marked T. 8 S. S. 4 on N. E. R. 82 S. 4 on S. E. S. 8 on S. W. and S. 5 on N. W. face, with 5 notch eo

on S, and 4 notch eo on E. edges, dug pits 18 x 18 x 12 ins. in each Sec., $5\frac{1}{4}$ ft. dist. and raised a mound of earth 2 ft. high. $4\frac{1}{4}$ ft. base. around post.

Land level. Soil 2^d rate
Dune bank the entire mile
Some grass.

R 8 E. continued

chains

East on a random line bet.
Secs 4 & 9.

$N 13^{\circ} 10' E$

40.00 Set temporary $\frac{1}{4}$ sec. cor.

79.86 Intersect W. S. line 10 lks S. of
cor. W Secs. 3, 4, 9 & 10.

Thence S mm

$S 89^{\circ} 56' W$. on a true line
bet. Secs. 4 & 9. with curve
na

39.93

Set a post 3 ft. long 3 ins. diam with marked
stone, 12 ins, in the ground for $\frac{1}{4}$ Sec, Cor,
marked $\frac{1}{4}$ S. on N face, dug pits 18 x 18 x 12
ins. 2' and W of post $5\frac{1}{2}$ ft. dist. and raised
a mound of earth $1\frac{1}{2}$ ft. high, $3\frac{1}{2}$ ft. base. around
post. from which a true line $1\frac{1}{2}$ m. S. lks.

79.86

$4\frac{1}{2}$ m. S. 42 lks. dist. marked $\frac{1}{4}$ S. B. S.
The Cor to Secs 4, 5, 8, 9
Land level. Soil 2^d rate
Some brush the entire mile.

Some grass.

Subdivisions of S.

chains

North on a random line
bet. Secs. 4 & 5.

$N = 130^{\circ} 09' E$

40.00 Set temporary $1/4$ sec. cor.

80.29 Intersect N. By of $1/4$ sec. 15 lbs
W of cor. to Secs. 4, 5, 32 & 33.

Just recently established
by me, Thence I am $80^{\circ} 06' W$.
on a true line bet. Secs. 4 & 5.
with same ca.

40.29 Set a post 3 ft. long 3 ins. diam with marked
stone, 12 ins. in the ground for $1/4$ Sec. Cor,
marked $1/4$ S. on W face, dug pits 18 x 18 x 12
ins. N and S. of post $5\frac{1}{2}$ ft. dist. and raised
a mound of earth $1\frac{1}{2}$ ft. high, $3\frac{1}{2}$ ft. base, around
post.

80.29 The cor. to Secs. 4, 5, 8 & 9.
Land level. Soil 2^d rate
then brush the entire whole
(same grass.)

R. & E. continued

chains From the corner to Secs. 5, 6, 31 & 32
on S. Bay of Sp. just recently established
by me from North to let. Secs 31 & 32
Va 13° 10' E.

4000 Set a post 3 ft. long 3 ins. diam with marked
stone, 12 ins, in the ground for $\frac{1}{4}$ Sec, Cor.
marked $\frac{1}{4}$ S. on W face, dug pits 18 x 18 x 12
ins. $\frac{1}{2}$ and $\frac{1}{4}$ of post $5\frac{1}{2}$ ft. dist. and raised
a mound of earth $1\frac{1}{2}$ ft. high, $3\frac{1}{2}$ ft. base around
post.

8000 Set a post 4 ft. long 4 ins. square, with marked
stone, 12 ins, in the ground for Cor. to Secs.
29, 30, 31 & 32 marked T. & S. 29 on
N. E. R. & S. 32 on S. E. S. 31 on
S. W. and S. 30 on N. W. face, with 1 notch
on S. and 5 notches on E. edges, dug
pits 18 x 18 x 12 ins. in each Sec., $5\frac{1}{2}$ ft. dist.
and raised a mound of earth 2 ft. high, $4\frac{1}{2}$ ft.
base. around post.

Land level. Soil 2^d rate
Some brush the entire mile
some grass.

Subdivision S.S.

claims

East on a random line bet.

Secs. 29 & 32

N $13^{\circ} 10' E$.4001 Set temporary $\frac{1}{4}$ sec. cor.79.91 Intersect N.W. line 14 $\frac{1}{4}$ R
of cor. to Secs. 29, 29, 32 & 33.Thence S $89^{\circ} 54' W$
on a true line bet. Secs.
29 & 32, with curve va.

39.95

mound

Deposited a marked stone 12 ins. in the
ground for $\frac{1}{4}$ Sec. Cor. dug pits 18 x 18 x 12 ins.
E and W of stone $5\frac{1}{2}$ feet dist. and raised
a mound of earth $1\frac{1}{2}$ ft. high $3\frac{1}{2}$ ft. base over
it. In E pit drove a stake 2 ft. long 2 ins.
sq. 12 ins. in the ground marked $\frac{1}{4}$ S. on N
face.

79.91

The cor. to Secs. 29, 30, 31 & 32

Sand level, Soil 2nd rateDense brush the entire mile
some grass.

R. S. E. continued

Lains

West on a random line
bet. Secs. 30 + 31

$\text{Ta } 13^{\circ} 09' \text{ E}$

19.00 E West 40 lbs north to R.

40.00 Set temporary place cor.

78.86 Intersect W. Bay of S. P. 28 lbs
Ref. cor. to Secs. 25, 30, 31 + 36

just recently established by
me since I am $\text{R } 89^{\circ} 48' \text{ E}$
on a true line bet. Secs. 30 + 31. with sumava

38.86

Set a post 3 ft. long 3 ins. diam with marked
stone, 12 ins, in the ground for $\frac{1}{4}$ Sec. Cor,
marked $\frac{1}{4}$ S. on R face, dug pits 18 x 18 x 12
ins. E and W. of post 5 ft. dist. and raised
a mound of earth 1 $\frac{1}{2}$ ft. high 3 $\frac{1}{2}$ ft. base around
post.

78.86

The cor. to Secs. 29, 30, 31 + 32
Land level, Soil 2 $\frac{1}{2}$ rot
since found the entire north
some grass.

Subdivision P.

chains

North bet. Secs. 29 + 30.

T^c 13° 09' E

40.00

Set a post 3 ft. long 3 ins. diam with marked stone, 12 ins. in the ground for $\frac{1}{2}$ Sec. Cor. marked $\frac{1}{2}$ S. on W face, dug pits 18 x 18 x 12 ins. N and S of post 5 $\frac{1}{2}$ ft. dist. and raised a mound of earth 1 $\frac{1}{2}$ ft. high. 3 $\frac{1}{2}$ ft. base. around post.

80.00

Set a post 4 ft. long 4 ins. square, with marked stone, 12 ins. in the ground for Cor. to Secs. 19, 20, 29 + 30 marked T. 8^S S. 20 on N. E. R. & 2 S. 29 on S. E. S. 30 on S. W. and S. 19 on N. W. face, with 2 notches on S. and 5 notch ∞ on E. edges, dug pits 18 x 18 x 12 ins. in each Sec., 5 $\frac{1}{2}$ ft. dist. and raised a mound of earth 2 ft. high. 4 $\frac{1}{2}$ ft. base. around post.

Land level. Soil 2^d rate

Some brush the entire mile
Some grass.

Dec. 18. 1883.

R. & E. continued

Chains

East on a random line bet.
Secs. 20 & 29.

$N = 13^{\circ} 10' E$

4000 Set temporary $\frac{1}{4}$ sec. cor.

79.94 Intersect W. S. line 1000 ft. N.
of cor. to Secs. 20, 21, 28 & 29.

Thence S. on $N 89^{\circ} 56' W$.
on a true line bet. Secs.
20 & 29, with course on

39.97

Set a post 3 ft. long 3 ins. diam with marked
stone, 12 ins. in the ground for $\frac{1}{4}$ Sec. Cor.
marked $\frac{1}{4}$ S. on N face, dug pits 18 x 18 x 12
ins. E and W of post 34 ft. dist. and raised
a mound of earth $1\frac{1}{2}$ ft. high 34 ft. diam. around
post.

79.94

The cor. to Secs. 19, 20, 29 & 30.

Land level soil 2nd set
dense brush the entire mile

Some grass.

Subdivisions 85

Chains

West on a random line
bet. Secs. 19 & 30

$N 13^{\circ} 10' 12''$

40.00 Set temporary $\frac{1}{4}$ sec. cor.

78.94 Intersect W. By of Sp. 18 ths N.
of cor. to Secs. 19, 24, 25 & 30

just recently established
by run, Thuse I am

$N 89^{\circ} 52' 2''$ on a true line
bet. Secs. 19 & 30. with same or

38.94 Set a post 3 ft. long 3 ins. diam with marked
stone, 12 ins. in the ground for $\frac{1}{4}$ Sec. Cor.
marked $\frac{1}{4}$ S. on N. face, the pile 18 x 18 x 12
ins. E and W of post $5\frac{1}{2}$ ft. dist. and raised
a mound of earth $1\frac{1}{2}$ ft. high, $3\frac{1}{2}$ ft. base around
post.

78.94 The Cor. to Secs. 19, 20, 29 & 30
Land level. Soil 2^d set
same mark the cubic with
some grass.

R & E. continued

Lains

North bet. Secs. 19 & 20
72° 13' 18" E

40.00

Set a post 3 ft. long 3 ins. diam with marked stone, 12 ins, in the ground for $\frac{1}{4}$ Sec. Cor, marked $\frac{1}{4}$ S. on W face, dug pits 18 x 18 x 12 ins. N and S of post $5\frac{1}{2}$ ft. dist. and raised a mound of earth $1\frac{1}{2}$ ft. high. $3\frac{1}{2}$ ft. base. around post. from which
bearing 91m. dist. by S 85° W. 94' then dist. marked $\frac{1}{4}$ S. B. S.
S. 85° W. 94' 12"

80.00

Set a post 4 ft. long 4 ins. square, with marked stone, 12 ins, in the ground for Cor, to Secs, 17, 18, 19 & 20 marked T. 8 S. 17 on N. E. R. & 2 S. 20 on S. E. S. 19 on S, W, and S, 18 on N, W, face, with 3 notches on S, and 5 notches on E. edges, dug pits 18 x 18 x 12 ins. in each Sec., $5\frac{1}{2}$ ft. dist. and raised a mound of earth 2 ft. high. $4\frac{1}{2}$ ft. base. around post. from which
bearing 91m. dist. by S 85° W. 94' then dist. marked 88 S 88 S 20 B. S.
7. 175 8. 75 7. 85 8 2 S. 17 B. S.
Land level. Soil 2' of set. Some
small trees. the entire north
some grass.

Subdivisions of S.

chain

Cast in a random line
bet. Secs. 17-20.

To 13° 09' 2

40.00 Set temporary 1/4 sec. cor.

79.97 Intersect West line 16 lbs N.
of cor. to Secs. 16, 17, 20 & 21

Thence I run

N 89° 53' W. on a true line
bet. Secs. 17 & 20, with corner

39.98 Set a post 3 ft. long 3 ins. diam with marked
stone, 12 ins, in the ground for 1/4 Sec. Cor,
marked 1/4 S. on N face, dug pits 18 x 18 x 12
ins. E and W of post 5 1/2 ft. dist. and raised
a mound of earth 1 1/2 ft. high, 3 1/2 ft. base around

79.97 ^{post.} The cor. to Secs. ~~17, 18, 19, 20~~
Said level. Soil 2^d rate
Down Bend the entire mile
some grass.

R & E. continued

Leins

Went on a random line bet.
Secs. 18 & 19.

Pa $130^{\circ} 18' E$.

4000 Set temporary 1/4 sec. cor.

79.02 Intersect W. By of Sp. 18th
N of cor. to Secs. 13, 18, 19 & 24
just recently established
by me. Thence I run N $89^{\circ} 52' E$
on a random line bet. Secs.
18 & 19, with same pa.

39.02 Set a post 3 ft. long 3 ins. diam with marked
stone, 12 ins. in the ground for 1/4 Sec. Cor.
marked 1/4 S. on N face, dug pit 18 x 18 x 12
ins. E and W of post 5 1/2 ft. dist. and raised
a mound of earth 1 1/2 ft. high, 3 1/2 ft. base, around
post.

79.02 The cor. to Secs. 17, 18, 19 & 20
land level. Soil 2' set
thence build the cube with
some grass.

Subdivisions of S.

chain

North bet. Secs. 17 & 18
T. 13° 10' E

40.00

Set a post 3 ft. long 3 ins. diam with marked stone, 12 ins, in the ground for $\frac{1}{4}$ Sec. Cor. marked $\frac{1}{4}$ S. on N face, dug pits 18 x 18 x 12 ins. N. and S of post $5\frac{1}{2}$ ft. dist. and raised a mound of earth $1\frac{1}{2}$ ft. high. $3\frac{1}{2}$ ft. base. around post.

80.00

Set a post 4 ft. long 4 ins. square, with marked stone, 12 ins, in the ground for Cor. to Secs. 7, 8, 17 & 18 marked T. 8 S S. 8 on N. E. R. 8 E S. 17 on S. E. S. 18 on S. W. and S. 7 on N. W. face, with 4 notches on S, and 4 notches on E. edges, dug pits 18 x 18 x 12 ins. in each Sec., $5\frac{1}{2}$ ft. dist. and raised a mound of earth 2 ft. high. $4\frac{1}{2}$ ft. base. around post.

Land level, Soil 2^d rate
Dense brush the under side
some grass

12th M. I find latitude to be 32° 45' N.
and my instr. in adjustment

R & E, continued

chains

East on a random line
bet. Secs. 8 & 17 $N 21^{\circ} 09' E$

40.00 Set temporary 1/4 sec. cor.
79.94 Intersect N. & E. line 21 lbs. N
after. to Secs. 8, 9, 16 & 17.
Thence down $N 89^{\circ} 51' W$. on
a true line bet. Secs.

8 & 17. with same va.

39.97 Set a post 3 ft. long 3 ins. diam with marked
stone, 12 ins. in the ground for $\frac{1}{4}$ Sec. Cor.,
marked $\frac{1}{4}$ S. on N. face, dug pits 18 x 18 x 12
ins. E and W of post 5 1/2 ft. dist. and raised
a mound of earth 1 1/2 ft. high 2 1/2 ft. base. ground
post.

79.94 The corner to Secs. 7, 8, 17 & 18.
Land level. Soil 2 1/2 rats
Down bank the cut here will
Some grass.

Subdivisions T & S.

chains

Went on a random line
bet. 5th Secs. 7 & 18.

$N 13^{\circ} 10' E$

40.00 Set temporary 1/4 sec. cor.

78.85 Intersect W. By of T_p. 24
bet. S. of cor. 6th Secs. 7, 12, 13 & 18
just recently established by me
Thence I run S. 89° 50' E. on
a true line bet. 5th Secs. 7 & 18.
with same or.

38.85 Set a post 3 ft. long 3 ins. diam with marked
stone, 12 ins. in the ground for 1/4 Sec, Cor,
marked 1/4 S. on N face, dug pits 14 x 18 x 12
ins. E and W of post 5 ft. dia and raised
a mound of earth 1 1/2 ft. high 3 1/2 ft. base around
post.

78.85 The corner to Secs. 7, 8, 17 & 18
Land level. Soil 2nd rate
dense brush the entire mile
(some grass.)

R. S. E. continued

claims

North bet. Secs. 7 & 8.
T_a 13° 09' E

4000

Set a post 3 ft. long 3 ins. diam with marked stone, 12 ins. in the ground for $\frac{1}{4}$ Sec. Cor, marked $\frac{1}{4}$ S. on W face, dug pits 12 x 18 x 12 ins. N and S of post 5 $\frac{1}{2}$ ft. dist. and raised a mound of earth 1 $\frac{1}{2}$ ft. high 3 $\frac{1}{2}$ ft. base. around post.

79.40 S. P. R. R. to S 53° 58' E.

8000

Set a post 4 ft. long 4 ins. square, with marked stone, 12 ins. in the ground for Cor. to Secs. 5-6-7 & 8 marked T 8 S S, 5 on N. E. R. 82 S, 8 on S. E. S, 7 on S, W, and S, 6 on N. W. face, with 5 notch ^{on S,} and 5 notch ^{on E.} edges, dug pits 18 x 18 x 12 ins. in each Sec., 5 $\frac{1}{2}$ ft. dist. and raised a mound of earth 2 ft. high 4 $\frac{1}{2}$ ft. base. around post.

Land level. Soil 29 rods
same broad the entire mile
same grass.

Subdivisions P.S.S.

chains

East on a random line
bet. Secs. 5 & 8.

$\gamma = 13^{\circ} 09' 2''$.

40.00 Set temporary $\frac{1}{4}$ sec. cor.

79.93 Intersect No. 1 line 30 lbs

Net cor. to Secs. 4, 5, 8 & 9

Thence I run

N $89^{\circ} 47'$ W. on a true
line bet. Secs. 5 & 8 with
same or.

39.97 Set a post 3 ft. long 3 ins. diam with marked
stone, 12 ins. in the ground for $\frac{1}{4}$ Sec. Cor.,
marked N S on N face, dug pit 18 x 18 x 12
ins. E and W of post 3 ft. dist. and raised
a mound of earth $1\frac{1}{2}$ ft. high $3\frac{1}{2}$ ft. base around
post.

79.93 The cor. to Secs. 5, 6, 7 & 8.

Land level. Soil is sat
dense brush the entire mile
same grass.

R & E; continued

chains

Went on a random line
bet. Secs. 6 & 7.

0.65 S. P. R. R. to S. $13^{\circ}10'E$
to S. $53^{\circ}58'E$.

40.00 Set temporary $\frac{1}{4}$ sec. cor.

78.65 Intersect W. By apt. sp.
58 lbs S of cor. to Sec.

1.6. 7 & 12. just recently
established by line. Hence
I run $S 89^{\circ}35'E$ on a true
line bet. Secs. 6 & 7. with same oa.

38.65 Set a post 3 ft. long 3 ins. diam with marked
stone, 12 ins. in the ground for $\frac{1}{4}$ Sec, Cor,
marked $\frac{1}{4}$ S. on $\frac{1}{2}$ face, dug pits 18 x 18 x 12
ins. E and W of post $5\frac{1}{2}$ ft. dist. and raised
a mound of earth $1\frac{1}{2}$ ft. high $8\frac{1}{2}$ ft. base. around
post.

78.65 The cor. to Secs. 5, 6, 7 & 8.
Sand loess. Soil 2^d rate
dense brush the entire width
some grass

Subdivisions of

chains

North on a random line
bet. Secs. 5 & 6.Ta $13^{\circ} 10' E$ 40.00 Set temporary $1/4$ sec. cor.80.21 Intersect N. By of Sp. 14 lbs
E of cor. to Secs. 5, 6, 31 & 32just recently established
by me, Hence I run
 $0^{\circ} 06' E$ on a true line bet.
Secs. 5 & 6. with same ca.40.21 Set a post 3 ft. long 3 ins. diam with marked
stone, 12 ins. in the ground for $1/4$ Sec. Cor.
marked 4 & 5 on W face, dug pits 18 x 18 x 12
ins. 4 and 5 of post $5 1/2$ ft. dist. and raised
a mound of earth $1 1/2$ ft. high, $3 1/2$ ft. base around
post.80.21 The cor. to Secs. 5, 6, 7 & 8
Sand level. Soil $2 1/2$ rats
Hence brush the entire mile
some grass.

Dec. 19. 1883

R & E. California

General Description.

This township lies in the level valley of the Santa Cruz River, the soil is good and covered with a dense growth of brush and some scattering timber.

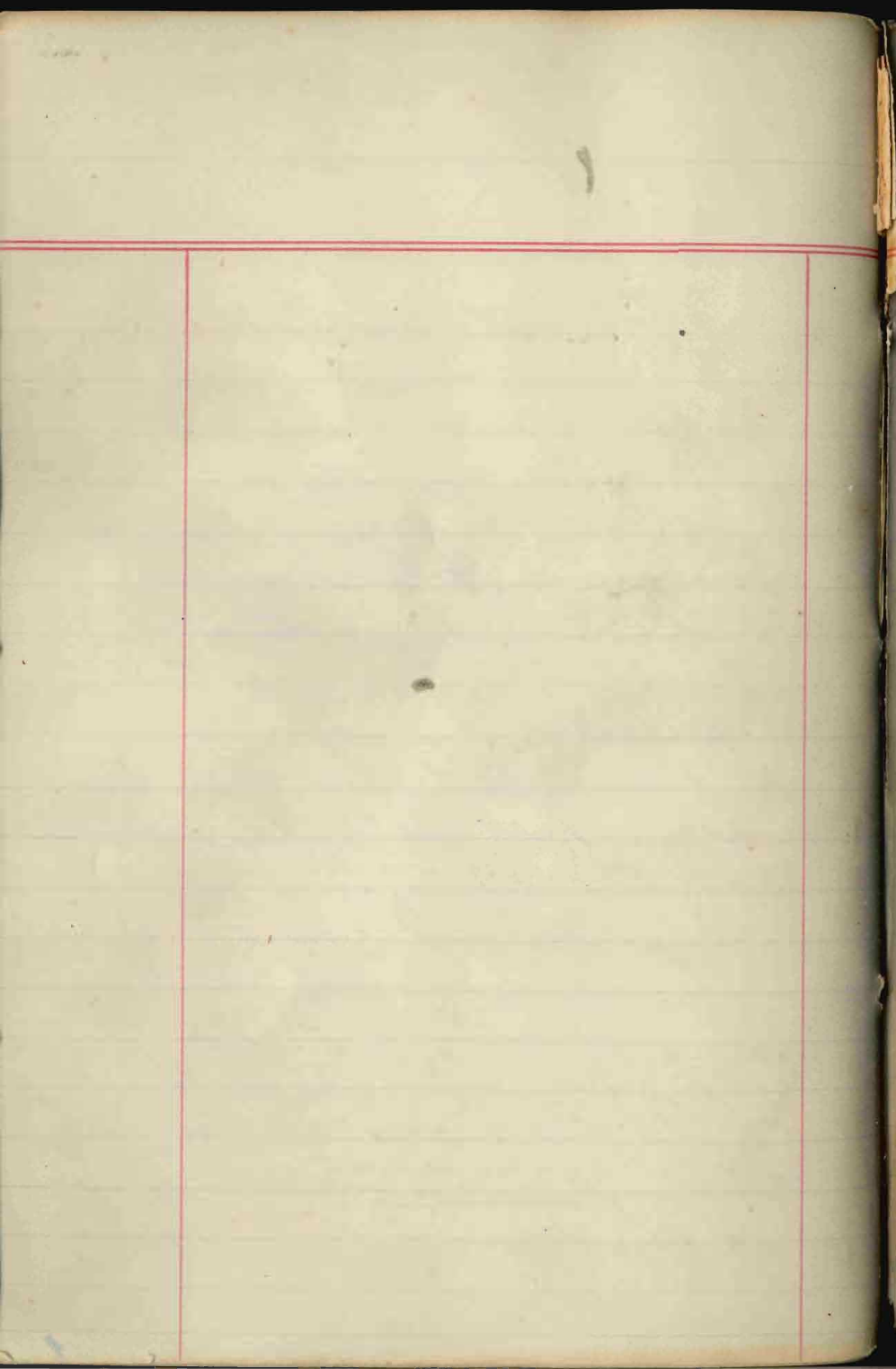
Water may be had by sinking 60-70 feet below the surface.

The soil will if irrigated produce good crops.

There is some good grass in this township.

The town of Pecos is situated in Sec. 22 x 23.

For find water in Book 18



U. S. Surveyor General's Office,

Tucson, Arizona, May 22 1885

The foregoing Field Notes of the Survey of the

Subdivision lines of
Township 5 South
Range 5 East

Of the Gila and Salt River Base and Meridian, Arizona, execu-
ted by W. C. Powers

Deputy Surveyor, under his contract of the 20th

day of July, 1885, having been

critically examined and the necessary corrections and explana-
tions made, the said Field Notes and the surveys they describe

are hereby approved

Royal A. Johnson
Surveyor General.