

*copied
latted*

BOOK 722

Book No 4

No. 722

R. C. Powers Deputy Surveyor.

T. *11 S.* R. *22 E.*

Sixth and Salt Rivers Meridian.

Surveyor

FIELD NOTES

OF

THE SUBDIVISION LINES OF

Township *11 S.* Range *22 E.*

Sixth and Salt Rivers Meridian.

BY

R. C. Powers Deputy Surveyor.

under his Contract of *Aug 23^d* 1883

Survey Commenced *June 12th* 1884

Survey Completed *June 14th* 1884

722

Platted,

Copied for Washington,

Copied for Register,

No. 722

Table showing the difference of latitude and departure in running 80 chains at any course from 1 to 60 minutes.

| Minutes. | Lks. | Minutes. | Lks. | Minutes. | Lks. |
|----------|------------------|----------|------------------|----------|-------------------|
| 1 | 2 $\frac{1}{8}$ | 21 | 49 | 41 | 95 $\frac{3}{8}$ |
| 2 | 4 $\frac{3}{8}$ | 22 | 51 $\frac{1}{8}$ | 42 | 98 |
| 3 | 7 | 23 | 53 $\frac{3}{8}$ | 43 | 100 $\frac{1}{8}$ |
| 4 | 9 $\frac{1}{8}$ | 24 | 56 | 44 | 102 $\frac{3}{8}$ |
| 5 | 11 $\frac{3}{8}$ | 25 | 58 $\frac{1}{8}$ | 45 | 105 |
| 6 | 14 | 26 | 60 $\frac{3}{8}$ | 46 | 107 $\frac{1}{8}$ |
| 7 | 16 $\frac{1}{8}$ | 27 | 63 | 47 | 109 $\frac{3}{8}$ |
| 8 | 18 $\frac{3}{8}$ | 28 | 65 $\frac{1}{8}$ | 48 | 112 |
| 9 | 21 | 29 | 67 $\frac{3}{8}$ | 49 | 114 $\frac{1}{8}$ |
| 10 | 23 $\frac{1}{8}$ | 30 | 70 | 50 | 116 $\frac{3}{8}$ |
| 11 | 25 $\frac{3}{8}$ | 31 | 72 $\frac{1}{8}$ | 51 | 119 |
| 12 | 28 | 32 | 74 $\frac{3}{8}$ | 52 | 121 $\frac{1}{8}$ |
| 13 | 30 $\frac{1}{8}$ | 33 | 77 | 53 | 123 $\frac{3}{8}$ |
| 14 | 32 $\frac{3}{8}$ | 34 | 79 $\frac{1}{8}$ | 54 | 126 |
| 15 | 35 | 35 | 81 $\frac{3}{8}$ | 55 | 128 $\frac{1}{8}$ |
| 16 | 37 $\frac{1}{8}$ | 36 | 84 | 56 | 130 $\frac{3}{8}$ |
| 17 | 39 $\frac{3}{8}$ | 37 | 86 $\frac{1}{8}$ | 57 | 133 |
| 18 | 42 | 38 | 88 $\frac{3}{8}$ | 58 | 135 $\frac{1}{8}$ |
| 19 | 44 $\frac{1}{8}$ | 39 | 91 | 59 | 137 $\frac{3}{8}$ |
| 20 | 46 $\frac{3}{8}$ | 40 | 93 $\frac{1}{8}$ | 60 | 140 |

Published by Edward Denny & Co., Printers and Stationers, San Francisco.

Table for Running on Slopes.

In the following table the first column shows the angle, the second, the number of links to be added to a chain on the slopes, to make one chain. horizontal measurement.

| Angle. | Cor. in links. | Angle. | Cor. in links. | Angle. | Cor. in links. | Angle. | Cor. in links. |
|--------|----------------|--------|----------------|--------|----------------|--------|----------------|
| 0 | | 0 | | 0 | | 0 | |
| 4 | 0-24 | 11 | 1-88 | 18 | 5-14 | 25 | 10-54 |
| 5 | 0-38 | 12 | 2-24 | 19 | 5-76 | 26 | 11-26 |
| 6 | 0-55 | 13 | 2-63 | 20 | 6-42 | 27 | 12-24 |
| 7 | 0-76 | 14 | 3-06 | 21 | 7-11 | 28 | 13-37 |
| 8 | 0-98 | 15 | 3-53 | 22 | 7-85 | 29 | 14-34 |
| 9 | 1-24 | 16 | 4-02 | 23 | 8-64 | 30 | 15-47 |
| 10 | 1-55 | 17 | 4-56 | 24 | 9-47 | 35 | 22-07 |

Published by Edward Denny & Co., Stationers and Printers, San Francisco.

No. 722

R. C. Powers Deputy Surveyor.
T. 11 S R. 22 E
Gila & Salt River Meridian.

FIELD NOTES

OF

THE SUBDIVISION LINES OF

Township 11 S. Range 22 E.
Gila & Salt River Meridian.

BY

R. C. Powers Deputy Surveyor.
under his Contract of Aug. 23 1883.
Survey Commenced June 12th 1884
Survey Completed June 14th 1884

Platted:

Copied for Washington,

Copied for Register,

Township 11D Range 22E

1A

Gila Salt River Meridian.

BOOK 722

| | | | | | | | | | | |
|----|----|----|----|----|----|----|----|----|----|----|
| 6 | 60 | 5 | 44 | 4 | 33 | 3 | 22 | 2 | 11 | 1 |
| 59 | | 58 | | 43 | | 32 | | 21 | | 10 |
| 7 | 57 | 8 | 42 | 9 | 31 | 10 | 20 | 11 | 9 | 12 |
| 56 | | 55 | | 41 | | 30 | | 19 | | 8 |
| 18 | 54 | 17 | 40 | 16 | 29 | 15 | 18 | 14 | 7 | 13 |
| 53 | | 52 | | 39 | | 28 | | 17 | | 6 |
| 19 | 51 | 20 | 38 | 21 | 27 | 22 | 16 | 23 | 5 | 24 |
| 50 | | 49 | | 37 | | 26 | | 15 | | 4 |
| 30 | 48 | 29 | 36 | 28 | 25 | 27 | 14 | 26 | 3 | 25 |
| 47 | | 46 | | 35 | | 24 | | 13 | | 2 |
| 31 | 45 | 32 | 34 | 33 | 23 | 34 | 12 | 35 | 1 | 36 |

See book No 1 for preliminary
outline and description of instrs -
used in exterior and subdivision
work -

Preliminary Oath of Assistants.

I, _____ do solemnly swear that I will well and truly perform the duties of Compassman, according to instructions given me, and to the best of my skill and ability.

Subscribed and sworn to before me, this _____ day of _____ 187

U. S. Deputy Surveyor.

We, _____ and _____

do solemnly swear that we will faithfully execute the duties of Chain carriers; that we will level the chain upon uneven ground, and plumb the tally pins, whether by

sticking or dropping the same, that we will report the true distance to all notable objects, and the true length of all lines; that we will assist in measuring, to the best of our skill and ability.

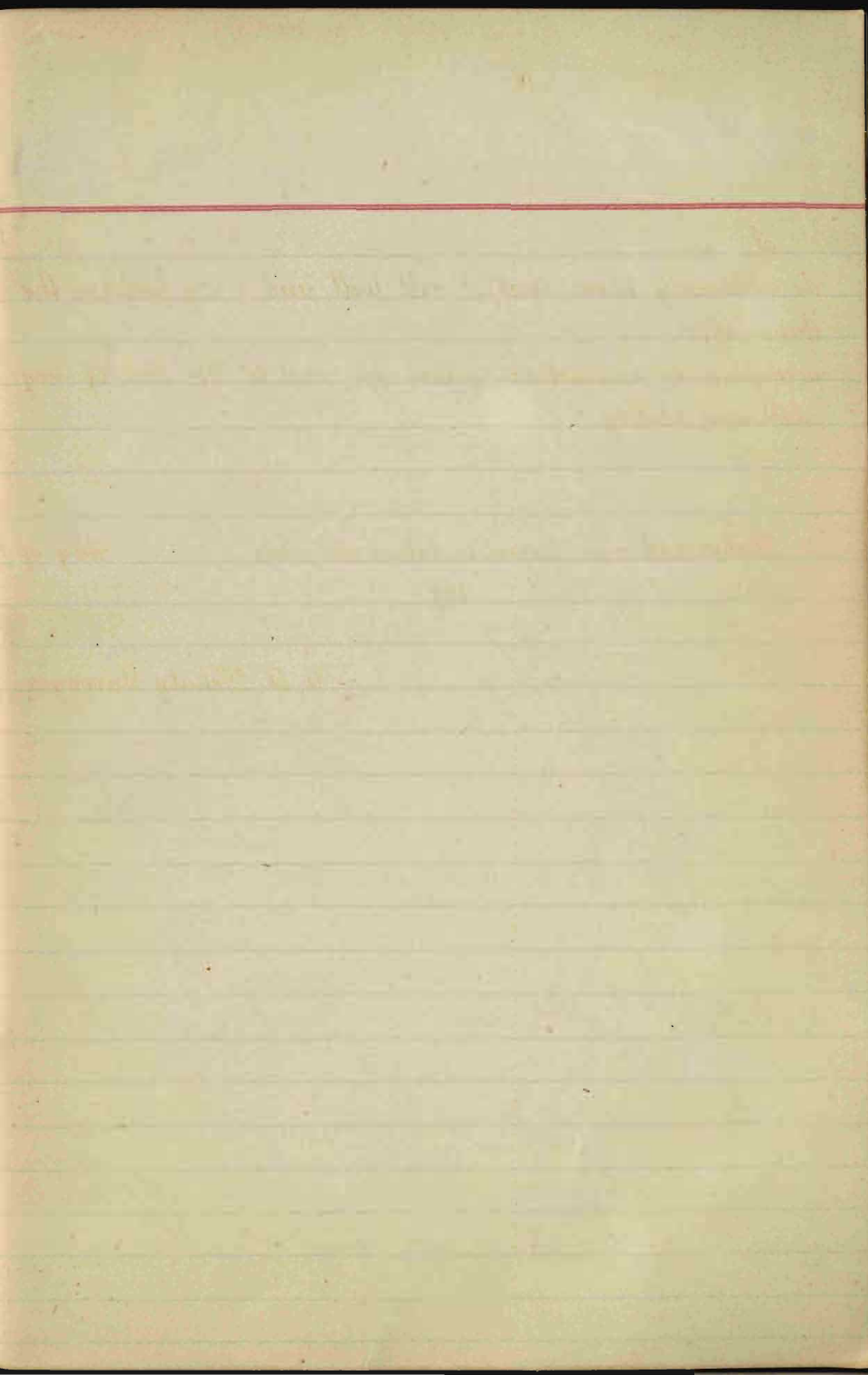
Subscribed and sworn to before me, this day of
187

U. S. Deputy Surveyor.

I,
do solemnly swear that I will well and truly perform the
duties of
according to instructions given me, and to the best of my
skill and ability.

Subscribed and sworn to before me, this day of
187

U. S. Deputy Surveyor.



Township 11 S

Range 22 E

Gila Salt River

Meridian.

Chains From the corner to Sections 35, 36, 1 and 2 on the South boundary which was recently established by me. I run North bet. Secs. 35 & 36 Va. 13°-00' E.

4000

marked stone 12 ins. in the ground for Sec. Cor. 2 sq. ins. 14 x 18 x 12 ins. N. and S. of stone 54 ft. dist. and raised a mound of earth 14 ft. high 34 ft. base over it. In N. pt. drove a stake 2 ft. long 2 ins. sq. 12 ins. in the ground marked 1/2 S. on N.

8000

marked stone 12 ins. in the ground for Sec. Cor. 2 sq. ins. 14 x 18 x 12 ins. N. and S. of stone 54 ft. dist. and raised a mound of earth 14 ft. high 34 ft. base over it. In N. pt. drove a stake 2 ins. sq. 2 ft. long 12 ins. in the ground marked T. 11 S. S. 25 on N. 2 228536 on S. E. S. 35 on S. W. and S. 26 on N. W. faces, with 1 notch on S. and 1 notch on E. sides.

Land level and broken soil. 1st rate. Good grass. No timber.

Township

17 S.

Range

22 E

Gita and Salt River

Meridian.

Chains

East, on a random line between Sections 25 and 36.

Variation $13^{\circ}00'$

East.

Ascend mt

10.00

Top hrs N. W. descend

40.00

Set temporary $\frac{1}{4}$ sec. cor.

79.96

Intersect E. body of $26^{\circ}16'$ lks S.
of cor. to Secs 25, 30, 31 $\frac{1}{2}$ & 36 which
has a stone firmly set in the
ground with pits and
mound of earth in good
condition with ^{notches on N side} ^{notches on S side}
thence I run
 $S 89^{\circ}03' W.$ on a true line bet
Secs 25 $\frac{1}{2}$ & 36 with same va.

39.98

Set a malpais stone $18 \times 15 \times 10$ ins. 12 ins.
in the ground for $\frac{1}{4}$ sec. cor. marked
 $\frac{1}{4}$ on N. face and raised a mound
of stone along side. Pits impracticable

79.96

The cor to Secs 25, 26, 35 $\frac{1}{2}$ & 36
Surface Mountainous and broken
Soil 35 over
Grass 25 rate.
No timber.

Township

11 S.

Range

22 E.

G. and S. R.

Meridian.

Chains

North, between Sections 25 and 26.

Variation 13°-00'

East.

Descending over broken surface

40.00

Set a malpais stone 10x10x 6 ins 6 ins in the ground for $\frac{1}{4}$ sec cor marked $\frac{1}{4}$ on N. face and raised a mound of stone alongside. Pits impracticable.

78.80

Dry wash 10 fms wide Co. N.E.

80.00

Placed a marked stone 12 in in the

28.24, 25+26

24

25

26

23

on N. W. faces, with 2 notches on S, and 1 notch on E edges.

Land Broken
Soil 2^d rate
Grass - good -
No timber

Township

11 S

Range

22 E

G. and S. R.

Meridian.

Chains

East, on a random line between Sections 24 and 25.

Variation $13^{\circ}-00'$ East.

- Over rough and broken surface
- 19.60 Dry wash 10 lbs wide to N.E.
- 40.00 Set temporary 1/4 sec. cor
- 79.92 Intersect East bdy. of Trp.
12 lbs. S. of cor to secs. 19, 24, 25
and 30 which is a Malpais
stone firmly set in the ground
marked 4 notches on N and 2 notches on S edges
with pits and mound of earth
in good condition - Thence I run
S. $89^{\circ}-58'$ or. in a true line
Bet. old 24 and 25 with the
same M.
deposited
- 39.96
- E. N.
- 79.92 The cor to Secs. 23, 24, 25 + 26
Land rough and broken -
Soil 28' or so -
Pond grows -
No timber -

BOOK 722
Township 71 South Range 22 E

G. and S. R. Meridian.

Chains

North, between Sections 23 and 24.

Variation 13°00' East.

4,000

Set a Malpais stone 16 X 10 X 9 ins.
10 ins in the ground for 1/4 sec.
Cor marked 1/4 on N. face
and raised a mound of
stone alongside. Pile impracticable

8,000

Set a Malpais stone 10 X 8 X 8 ins
in a mound of stone for the
Cor. to Secs. 13, 14, 23 & 24 marked
with 3 notches on S. and 1 notch
on E. edges. Pile impracticable
Surface level broken -
Soil - 3rd rate
Good grass -
No timber -

Township

14 N

Range

22 E

G. and S. R. B.

Meridian.

Chains

East, on a random line between Sections 13 and 24.

Variation $13^{\circ}-00'$ East.

40.00

Set $\frac{1}{4}$ sec. cor. -

79.90

Intersect East boundary of Sp. 16 lks. N. of cor. to Secs. 13 16, 19 & 24 which is a Meppais stone set in the ground with 3 notches on N and S Edges pits and mound of earth in good condition -

Thence I run $N. 89^{\circ}-53' W.$ on a true line bet Secs. 13 and 24 with same va.

39.95

Deposited a marked stone 12 ins. in the ground for $\frac{1}{4}$ Sec. Cor. -

Set $\frac{1}{4}$ sec. cor. -
 E. on N. of stone 12 ft. dist and raised a mound of earth 12 ft. high - 4 ft. base over it. In E. pit drove a stake 2 ft. long 2 ins. sq. 12 ins. in the ground marked $\frac{1}{4}$ S. on N. face.

79.90

The cor. to Secs. 13, 14, 23 & 24
 Surface level and rocky -
 Soil 3^d rate -
 Good grass -
 No timber -

Township

11 S

Range

22 E

G. and S. R.

Meridian.

Chains

North, between Sections 13 and 14.

Variation $13^{\circ}-00'$

East.

40.00

Deposited a marked stone 12 ins. in the ground for Cor to Sec 13. Dug pit 18 x 18 x 12 ins. N. and S. of stone 1/2 ft. apart and raised a mound of earth 1 1/2 ft. high 1/2 ft. base over it. In N. pit drove a stake 2 ft. long 2 ins. sq. 12 ins. in the ground marked 1/2 S. on W. face.

80.00

Deposited a marked stone in the ground for Cor to Secs 11, 12, 13 & 14. Dug pits 18 x 18 x 12 ins. in each Sec. 1/2 ft. apart and raised a mound of earth 2 ft. high 1/2 ft. base over it. In S.E. pit drove a stake 2 ft. long 2 ins. sq. 12 ins. in the ground marked 1/2 S. S. 12 on N.E. R 22 E S 13 on S.E. S 14 on S.W. and S 11 on N.W. faces, with 4 notches in S. and 1 notch on E edges.

Land level

Soil & stone - rock in places

Good grass

No timber

Township N 1 S

Range 22 E

Meridian.

Chains

East, on a random line between Sections 12 and 13.

Variation 13° 00' East.

20.60 Dry wash 100 lks wide Co N. 70° E.
 25.00 Road course N. W. & S. E.
 40.00 Set temporary $\frac{1}{4}$ sec. cor.
 80.06 Intersect east bdy of Sp. 20
 lks. N. of cor. to Secs. 7, 12, 13 &
 18 which is a Malpais
 stone firmly set in the ground
 marked with 2, notches on north end & 4, notches on
 with pits and mound of earth
 in good condition -
 Thence I run N. 89° 51' W,
 on a true line bet. Secs. 12
 and 13 with same VA.

40.03

Set a marked stone 12 ins. in the
 ground at $\frac{1}{4}$ Sec. Cor. dug pits 18 x 18 x 12 ins.
 E. and W. of stone 3 1/2 feet apart and raised
 a mound of earth 14 ft. high 3 1/2 ft. base over
 it. In E. pit, drove a stake 2 ft. long 2 ins.
 sq. 12 ins. in the ground marked $\frac{1}{4}$ S. on N.
 face.

80.06 The cor. to Secs. 11, 12, 13 & 14
 Land level
 Soil 3/4 rate -
 Good grass -
 No timber

Chains

North, between Sections 11 and 12.

Variation $13^{\circ}-00$ East.

4000

Revised a marked stone 12 ins. in the ground for Sec. Cor. dug pits $18 \times 18 \times 12$ ins. N. and S. of stone $1 \frac{1}{2}$ ft. apart and raised a mound of earth $1 \frac{1}{2}$ ft. high $3 \frac{1}{2}$ ft. base over it. In N. pit drove a stake 2 ft. long 2 ins. sq. 12 ins. in the ground marked $\frac{1}{2}$ S. on W. face.

8000

Revised a marked stone 12 ins. in the ground for Sec. Cor. to Secs. 11, 12, 11, 12. dug pits $18 \times 18 \times 12$ ins. in each Sec. $5 \frac{1}{2}$ ft. dist. and raised a mound of earth $1 \frac{1}{2}$ ft. high $4 \frac{1}{2}$ ft. base over it. In N. pit drove a stake 2 ins. sq. 2 ft. long 2 ins. in the ground marked T. 11 S. 1 on S. E. R. 22 E. S. 12 on S. E. S. 11 on S. W. and S. 2 on N. W. faces, with 5 notches on S, and 1 notch on E edges.

Land level.

Soil fertile.

Good grass.

No timber.

Township

11 S

Meridian.

Chains

East, on a random line between Sections 1 and 12.

Variation $13^{\circ}00'$ East.

- 16.00 Road - bet. N.W. and S.E.
 40.00 Set temporary $\frac{1}{4}$ sec cor.
 80.04 Intersect east bdy of Tp. 19
 lks N. of cor. to Secs. 1, 6, 7, and
 12 which is a stake in $\frac{1}{8}$ ft.
 marked $\frac{1}{2}$ S on N & A 2, 3 & 8 7 on S & S 12
 on SW and see 1 on NW face with $\frac{1}{2}$ notch
 on north and $\frac{1}{2}$ notches on S face with
 pile and mound of earth in good condition
 Thence I run $N. 89^{\circ}51' W.$ on a
 true line bet. Secs. 1 and 12
 with same cor.
 40.02
 E W
 In E. pit above a stake 2 ft. long 2 ins.
 sq. 12 ins. in the ground marked $\frac{1}{2}$ S. on N.
 face.
 80.04 The cor. to Secs. 1, 2, 11 & 12
 Land level -
 Soil good -
 Grass good -
 No timber -

Township

11 S

Range

22 E

G. and S. R.

Meridian.

Chains

North, on a true line between Sections 1 and 2.

24.00
38.50
44.00

Road to N.E.

Variation $13^{\circ}-00'$ East.

Road to W.M. and S.E.

Deposited a marked stone 12 ins. in the
ground for Sec. Cor. dug pit 18 x 18 x 12 ins.

N. S.

In N. S. pit drove a stake 2 ft. long 2 ins.
base over

N.

In N. S. pit drove a stake 2 ft. long 2 ins.
12 ins. in the ground marked $\frac{1}{2}$ S. on W. face

53.00

Creek 100 ft wide Co. East-

80.14

Intersect the S. standard
Parallel S. 22.36 Chs. West of theStand. Cor. to Secs. 35 & 36 S. 10 S. R. 22 E which is
a post set in the ground, properly marked with
pits and mound of earth around it
all in good condition.Deposited marked stone 12 ins
in the ground for Closing cor. to Secs.
1 and 2, dug pit 18 x 18 x 12 ins. E. W. & W.
of Cor. $5\frac{1}{2}$ ft. dia. and raised mound
of earth 2 ft. high $4\frac{1}{2}$ ft. base
pit. In E. pit drove a stake
2 ins. sq. 2 ft. long 12 ins. in the ground
marked C.C. S. 11 S., R. 22 E. m. S. and
S. 1 on E. W. & on W. faces with 1 notch
on E. & 5 notches on W. face.

Surface broken soil & brats - good grass

Township

14 S.

Range

22 E.

S and S. R.

Meridian.

Chains

From the cor. to Secs. 2, 3, 34, 35
 on the south boundary
 which was recently established
 by me — — — — —
 North bet. Secs. 34 and 35
 1/2 13200' E.

4000

Set a granite stone 20 X 18 X 10 ins.
 15 ins. in the ground for 1/4 sec. cor.
 marked 1/4 on W. face and raised
 a mound of stone along side
 Pit is impracticable

8000

Set a molpau stone 18 X 17 X 10
 ins. 12 ins. in the ground for cor. to Secs.
 26, 27, 34 and 35 marked with notch
 on S. and 2 notches on E. edges
 and raised a mound of stone
 alongside. Pit is impracticable —

Surface rough and broken

Soil 3500 ft

Good grass
 Carefully examined adjustments of
 solar inst. today, particularly latitude
 and reversing apparatus and find it
 correct

Township

11 S.

Range

22 E.

G. and S. R.

Meridian.

Chains

East, on a random line between Sections 26 and 35.

Variation $13^{\circ}00'$ East.

- 12.60 Dry wash 20 lbs wide cor. N.
- 40.00 Set temporary $\frac{1}{4}$ sec. cor.
- 80.00 Intersect N. & S. line 40 lbs.
N of cor to Secs 25, 26, 35 & 36
Thence I run N. $89^{\circ}43' W.$ on a
true line bet. Secs 26 & 35 with
same va.
- 40.00 Set a maffaic stone $16 \times 10 \times 5$
ins. 10 ins in the ground for $\frac{1}{4}$ sec.
cor. marked $\frac{1}{4}$ on N. face and
raised a mound of stone along
side. Pits impracticable
- 80.00 The cor. to Secs. 26, 27, 34 and
35 -
Land Broken
Soil 3^d or 4th rocky
Good grass
No timber

Township

S. S.

Range

22 E.

G. and S. R.

Meridian.

Chains

North, between Sections 26 and 27.

Variation $13^{\circ}00'$ East.

- 40.00 Set a malpais stone $10 \times 10 \times 8$ ins
6 ins. in the ground for $\frac{1}{4}$ sec. cor. marked
 $\frac{1}{4}$ on N. face and raised a mound
of stone alongside. Pits impracticable
- 58.00 Dry wash 10 lbs wide Co N. 60° E
- 68.00 Begin ascent malpais hill
- 78.20 Top of hill fro N. E. and P. W. mound
- 80.00 Set a malpais stone $12 \times 10 \times 8$ ins
8 ins. in the ground for cor. to Secs.
22, 23, 26 and 27 marked with 2
notches on S. and E. edges and
raised a mound of stone
alongside. Pits impracticable -
Surface Broken -
Soil 3' rate -
Grass 2' rate -
No timber -

Township

11 S

Range

22 E

G. and S. R.

Meridian.

Chains

East, on a random line between Sections 23 and 26.

Variation $13^{\circ}00'$

East.

2.00

Descend Melpais hill

20.00

Base of " " enter
level country

40.00

Set temporary $\frac{1}{4}$ sec. cor.

79.92

Intersect N. and S. line 30 lks.
N. of cor. to Secs. 23, 24, 25 & 26Thence I run $N. 89^{\circ} 47' W.$ on
a true line bet. Secs. 23 & 26
with the same variation -

39.96

Deposited a marked stone 12 ins. in the
ground for $\frac{1}{4}$ Sec. Cor. dug pits 18 x 18 x 12 ins.E. and N. of stone 24 ft. 1 ft. and raised
a mound of earth 14 ft. high 24 ft. base over

it. In E. pit drove a stake 2 ft. long 2 ins.

39.92 ins. in the ground marked $\frac{1}{4}$ S. on N.

79.92

The cor. to Secs. 22, 23, 26 & 27

Land level & mountainous rocks

Soil 25 orate -

Good grass -

No timber -

Township

11 S

Range

22 E

Grand S. R.

Meridian.

Chains

North, between Sections 22 and 23.

Variation 132° 00'

East.

10.00
40.00

Foot of hill

2s. E. and N.

N. S.

N.

80.00

Deposited a marked stone 12 ins. in the ground for Cor. to Sec 14, 15, 22 & 23 dug pits 15 x 15 x 12 ins. in each cor. 5 ft. dist. and raised a mound of earth 2 ft. high 4 ft. base over it. In S. E. cor. a 2' x 2' sq. 2 ft. long 12 ins. in the S. W. corner marked T. 11 S. S. 14 on N. E. S. 22 & 23 on S. E. S. 22 on S. W. and S. 15 on N. W. faces, with 3 notches on S, and 2 notches on E edges.

Land level.
Soil 2^o rate
Good grass.

Township 11 W. Range 22 EG. and S. P. Meridian.

Chains

East, on a random line between Sections 14 and 23.

Variation 13° 00' East.

- 4000 Set temporary $\frac{1}{4}$ sec cor.
- 79.89 Intersect N. & P. line 12 lbs.
 O. of cor. to Secs. 13, 14, 22 & 23.
 Thence I run S. 89° 55' W. on
 a true line between 14 and
 23 with same Va.
- 39.94 Set a triangular stone 18 X 12 X
 10 lbs 12 lbs in the ground
 for $\frac{1}{4}$ sec cor. marked $\frac{1}{4}$ on
 N. face ^{and raised a mound of stone along side} ~~pts~~ impracticable
- 79.89 The cor to Secs. 14, 15, 22 & 23 -
 Land level -
 Soil 3d rate.
 Good grass.
 No timber.

Township N D Range 22 E

G. and D. Re Meridian.

Chains North, between Sections 14 and 15.

Variation 13° 00' East.

40.00

Deposited a marked stone 12 ins. in the ground for $\frac{1}{4}$ Sec. Cor. dug pits 18 x 18 x 12 ins. N. and S of stone $5\frac{1}{2}$ feet dist and raised a mound of earth $1\frac{1}{2}$ ft. high $3\frac{1}{2}$ ft. base over it. In N. pit drove a stake 2 ft. long 2 ins. sq. 12 ins. in the ground marked $\frac{1}{4}$ S. on NW face.

80.00

Deposited a marked stone 12 ins. in the ground for Cor. to Secs 10, 11, 14 & 15, dug pits 18 x 18 x 12 ins in each Sec $5\frac{1}{2}$ ft. dist. and raised a mound of earth 2 ft high $4\frac{1}{2}$ ft. base over it. In S E pit drove a stake 2 ins. sq. 2 ft long 12 ins. in the ground marked T. 11 S. S 11 on N.E R 22 E S 14 on S.E. N. 15 on S W and S. 10 on N W faces, with 4 notches on S, and 2 notches on E edges.

Surface Level
Soil 25 rate -
Good grass -
No timber -

Township

11 S

Range

22 E

G. and S. Co.

Meridian.

Chains

East, on a random line between Sections 11 and 14.

Variation

13° 00'

East.

40.00 Set temporary $\frac{1}{4}$ sec. cor.
 79.90 Intersect N. & S. line 16 Mas.
 P. of cor to Secs. 11, 12, 13 & 14
 Thence I run S 89° 58' W.
 on a true line bet Secs
 11 and 14 with same va.

39.95

Deposited a marked stone 12 ins. in the
 ground for $\frac{1}{4}$ Sec. Cor. dug pits 18 x 18 x 12 ins.

E and W. of stone 5 $\frac{1}{2}$ feet dist and raised
 a mound of earth 1 $\frac{1}{2}$ ft. high 3 $\frac{1}{2}$ ft. base over
 it. In E. pit drove a stake 2 ft. long 2 ins.
 sq. 12 ins. in the ground marked $\frac{1}{4}$ S. on W.
 face.

79.90 The cor. to Secs. 10 11 14 and 15
 Sand level
 Soil 1.5 ft. rate
 Good grass
 No timber

Township

11 *D*

Range

22 *E*

G. and S. R.

Meridian.

Chains

North, between Sections 10 and 11.

Variation

13°-00'

East.

2.000

Ascend Hooker's butte

4.000

Set a malpais stone 10 1/2 x 6 1/2 ins
6 ins in the ground for 1/4 Sec.
Cor. marked 4 on SW face
and raised a mound of
stone along side. Pits impracticable

42.000

Top of butte & descend

5.000

Foot of same and over level

64.000

Top face *to* N.E. + S.W.

8.000

Deposited a marked stone 12 ins. in the
ground for Cor to Secs 2, 3, 10 & 11, dug pits
18 x 18 x 12 ins in each Sec 5 1/2 ft. dist. and
raised a mound of earth 2 ft high 4 1/2 ft. base
over it. In S E pit drove a stake 2 ins. sq. 2
ft long 12 ins. in the ground marked T. 110.
S. 2 on N.E. R. 22 E S 11 on S.E., S. 10
on S.W. and S. 3 on N.W. faces. with
5 notches on S. and 2 notches
on E edges.

Land level & hilly
Soil 2' orate
Good grass
No timber.

Township 11 D Range 22 EG. and D. R. Meridian.

Chains

East, on a random line between Sections 2 and 11.

- 32.00 Road to N.E. 1/4. Variation $13^{\circ}00'$ East.
- 4.00 Set temporary 1/4 sec. cor.
- 80.00 Intersect N.W. 1/4 line 16 ft. N. 17 cor. & Secs. 1, 2, 11 and 12. Thence I run $N 89^{\circ}03' W$ on a true line bet. Secs 2 and 11 with same va.
- 4.00 Set a walrus stone $16 \times 10 \times 4$ ins. 10 ins in the ground for 1/4 sec. cor. marked 1/4 on N. face and raised a mound of stone alongside. Pit is impracticable
- 8.00 The cor. & Secs. 2, 3, 10 & 11 -
 Land level
 Soil 1st rate
 Good grass
 No timber

Township 41st P. Range 22nd E.

G. and O. R. Meridian.

Chains North, on a true line between Sections 2 and 3.

Variation 13° 00' East.

4.00

Deposited a marked stone 12 ins. in the ground for $\frac{1}{4}$ Sec. Cor. dug pits 18 x 18 x 12 ins. N. and S. of stone $\frac{1}{4}$ ft. dist and raised a mound of earth $1\frac{1}{2}$ ft. high $\frac{3}{4}$ ft. base over it. In N. pit drove a stake 2 ft. long 2 ins. sq. 12 ins. in the ground marked $\frac{1}{4}$ S. on W. face

61.50

any mach. 100. Hq. wide Co. East

80.01

Intersect 2nd Standard Par.
North 27.20 Ch. W. of Stand. Cor. to Sec

3x455 1/10 S. R. 22 E. which is post set in the ground with pits E. & W. of mound of earth around it. in good condition
 Deposited marked stone 12 ins in the ground for Closing Cor. to Sec. 243, dug pits 18x18x12 ins E. W. of cor. $5\frac{1}{2}$ ft. dist. and raised a mound of earth 2 ft. high $4\frac{1}{2}$ ft. base over it. In E. pit drove a stake 2 ins sq. 2 ft. long 12 ins in the ground marked C. C. 111 S. R. 22 E. and S. 2 on E. and S. 3 on W. faces with 2 notches on E and 4 notches on W. faces.

Surface - level and broken

Soil - 2nd rate

Good Grass

No timber

Township

11 P.

Range

22 E.

G. and P. Co.

Meridian.

Chains

From the cor to Recor 34, 33784 on the south side, recently established by line North, between Sections 33 and 34.

Variation

13°00'

East.

40.00

Deposited a marked stone 12 ins. in the ground for $\frac{1}{4}$ Sec. Cor. dug pits 18 x 18 x 12 ins. N. and P. of stone $5\frac{1}{2}$ feet dist. and raised a mound of earth $1\frac{1}{2}$ ft high $3\frac{1}{2}$ ft. base over it. In N. pit drove a stake 2 ft. long 2 ins. sq. 12 ins. in the ground marked $\frac{1}{4}$ S. on N. face.

80.00

Deposited a marked stone 12 ins. in the ground for Cor. to Secs 27, 28, 33 & 34 dug pits 18 x 18 x 12 ins. in each Sec. $5\frac{1}{2}$ ft. dist. and raised a mound of earth 2 ft high $4\frac{1}{2}$ ft base over it. In S. E. pit drove a stake 2 ins. sq. 2 ft long 12 ins. in the ground marked T. 110. S. 27 on N. E. R. 22 E. S. 34 on S. E. S. 33 on S. W. and S. 28 on N. W. faces. with 1 notch on S. and 3 notches on E. edges.

Land level and broken
 Soil & rate -
 Good grass -
 No timber -

Township

11 S.

Range

22 E.

S. and S. R.

Meridian.

Chains

East, on a random line between Sections 27 and 34.

Variation $13^{\circ}00'$ East.

4000

Set temporary $\frac{1}{4}$ sec. cor.

79.94

Intersect N. & E. line 17 lbs.

N. of the cor. to Secs. 26, 27,

34 and 35 Thence I run

N. $89^{\circ}58'00''$ on a true line

bet. Secs. 27 and 34 with the

same va.

39.97

Deposited a marked stone 12 ins. in the
ground for $\frac{1}{4}$ Sec. Cor. 3 1/2 x 18 x 18 x 12 ins.E. and N. of stone $\frac{1}{4}$ ft. dist and raiseda mound of earth $1\frac{1}{2}$ ft. high 3 1/2 ft. base over

it. In E. pit drove a stake 2 ft. long 2 ins.

sq. 12 ins. in the ground marked $\frac{1}{4}$ S. on N.

face.

79.94

The cor. to Secs. 27, 28, 33 & 34

Surface Level

Soil 2 ft. or so

Good Grass.

No. timber.

Township

110

Range

22 E

G and P. R.

Meridian.

Chains

North, between Sections 27 and 28.

Variation

13° 00'

East.

4000

Deposited a marked stone 12 ins. in the ground for $\frac{1}{4}$ Sec. Cor. dug pits 18 x 18 x 12 ins. N. and S. of stone $\frac{1}{2}$ ft. from it and raised a mound of earth $1\frac{1}{2}$ ft. high 34 ft. base over it. In N. pit drove a stake 2 ft. long 2 ins. sq. 12 ins. in the ground marked $\frac{1}{4}$ S. on N. face.

8000

Deposited a marked stone 12 ins. in the ground for Cor. to Sec. 21, 22, 27 & 28 dug pits 18 x 18 x 12 ins. in each Sec. 54 ft. dist. and raised a mound of earth 2 ft. high 4 $\frac{1}{2}$ ft. base over it. In S. E. pit drove a stake 2 ins. sq. 2 ft. long 12 ins. in the ground marked T. 110 S. 22 on N. E. R 22 E. S. 27 on S. E. S. 28 on S. W. and S. 21 on N. W. faces, with 2 notches on S. and 3 notches on E. edges.

Land level
Soil 1 $\frac{1}{2}$ rate
Good grass
No timber

BOOK 722

Range

22 E

Township

11 N

G. and P. R.

Meridian.

Chains

East, on a random line between Sections 22 and 27.

Variation $13^{\circ}00'$ East.

40.00 Set temporary $\frac{1}{4}$ sec. cor.
 68.00 Ascend Malpais Hill
 79.92 Intersect N. E. S. D. line 20 lbs
 N. of cor. to Secs. 22, 23, 26
 and 27, thence I run $N 89^{\circ}$
 51' W. on a true line between
 Secs. 22 and 27

39.96

Deposited a marked stone 12 ins. in the
 ground for $\frac{1}{4}$ Sec. Cor. - dug pit 18 x 18 x 12 ins.
 E and N. of stone $\frac{1}{4}$ ft. dist. and raised
 a mound of earth $1\frac{1}{2}$ ft. high $3\frac{1}{2}$ ft. base over
 it. In E. pit drove a stake 2 ft. long 2 ins.
 sq. 12 ins. in the ground marked $\frac{1}{4}$ S. on N.
 face.

79.92 The cor. to Secs. 21, 22, 27 and
 28 -
 Land level & hilly -
 Soil 2d rate -
 Good grass -
 No timber -

Township

110.

Range

22 E.

G. and P. R.

Meridian.

Chains

North, between Sections 21 and 22.

2.00
41.00Variation 180° 00' East.
Dry wash 15 lks. wide Corner N.E.

Deposited a marked stone 12 ins. in the ground for $\frac{1}{4}$ Sec. Cor. dug pits 18 x 18 x 12 ins. N. and S. of stone $5\frac{1}{2}$ ft. dist. and raised a mound of earth 1 $\frac{1}{2}$ ft. high 4 ft. base over it. In N. pit drove a stake 2 ft. long 2 ins. sq. 12 ins. in the ground marked $\frac{1}{4}$ S. on W. face.

58.00
80.00

Dry wash 10 lks. wide Co. N.E.

Deposited a marked stone 12 ins. in the ground for Cor. to Secs. 15, 16, 21 & 22 dug pits 18 x 18 x 12 ins. in each Sec. $5\frac{1}{2}$ ft. dist. and raised a mound of earth 2 ft. high 4 $\frac{1}{2}$ ft. base over it. In S.E. pit drove a stake 2 ins. sq. 2 ft. long 12 ins. in the ground marked T. 110, S. 15 on N.E. S. 22 on S.E., S. 21 on S.W. and S. 16 on N.W. faces, with 3 notches on S and 3 notches on E edges.

Sand level
Soil 25 orate
Good grass
No timber

Township

11 D

Range

22 E

G and D. Re.

Meridian.

Chains

East, on a random line between Sections 15 and 22.

Variation $13^{\circ}-00'$ East.

40.00
80.04
Set temporary 1/4 Sec. cor.
Intersection of G and D. 17 lbs.
P. of cor. to Secs. 14, 15, 22,
and 23. Mound I run
S. $89^{\circ}-55'$ W. on a true
line bet Secs. 15 and 22
with same Va.

41.02
Deposited a marked stone 12 ins. in the
ground for $\frac{1}{4}$ Sec. Cor. dug pit 18 x 18 x 12 ins.
E. and W. of stone $\frac{1}{4}$ feet deep and raised
a mound of earth $1\frac{1}{2}$ ft. high $\frac{3}{4}$ ft. base over
it. In E. pit drove a stake 2 ft. long 2 ins.
sq. 12 ins. in the ground marked $\frac{1}{4}$ S. on N.
face.

81.04
The cor. to Secs 15, 16 2/4 22
Land level
Soil 25 rods
Good grass
No timber.

Township

11 D.

Range

22 E.

G. and O. R.

Meridian.

Chains

North, between Sections 15 and 16.

Variation $10^{\circ}00'$ East.

4000

Deposited a marked stone 12 ins. in the ground for $\frac{1}{4}$ Sec. Cor. dug pits $18 \times 18 \times 12$ ins. N. and S. of stone $5\frac{1}{2}$ ft. dist. and raised a mound of earth $1\frac{1}{2}$ ft. high $3\frac{1}{2}$ ft. base over it. In N. pit drove a stake 2 ft. long 2 ins. sq. 12 ins. in the ground marked $\frac{1}{4}$ S. on N. face.

8000

Deposited a marked stone 12 ins. in the ground for Cor. to Secs 9, 10, 15 & 16 dug pits $18 \times 18 \times 12$ ins. in each Sec. $5\frac{1}{2}$ ft. dist. and raised a mound of earth 2 ft. high $4\frac{1}{2}$ ft. base over it. In S E pit drove a stake 2 ins. sq. 2 ft. long 12 ins. in the ground marked T. 110. S 10 on N E R 22 E, S 15 on S E. S. 16 on S W and S. 9 on N W faces, with 4 notches on S, and 3 notches on E edges.

Land level
 Soil 1st rate -
 Good grass -
 No timber -

Township ~~N. S.~~ E. and S. R. Range 22 E. Meridian.

Chains East, on a random line between Sections 10 and 15. Variation 13°-00' East.

40.00 Set temporary 1/4 sec cor.
47.00 Dry wash 10 lks wide Co. N.E.
80.08 Intersect N. & S. line 16 lks N. of cor to Secs. 10, 11, 14 & 15. Thence I run N. 89°-53' W. on a line bet Secs 10 and 15 with same Va.

40.04 Deposited a marked stone 12 ins. in the ground for 1/4 Sec. Cor. Aug pit 18 x 18 x 12 ins. E. and W. of stone 4 feet apart and raised a mound of earth 1 1/2 ft high 2 1/2 ft base over it. In E. pit drove a stake 2 ft long 2 ins. sq. 12 ins. in the ground marked 1/2 S. on N. face.

80.08 The cor to Secs 9, 10, 15 & 16. Land level Soil 1st rate Good grass No timber

No. 722

BOOK
Township

722

11 P.

Range

22 E

G. and D. R.

Meridian.

Chains

North, between Sections 9 and 10.

Variation

18° 00'

East.

40.00

Deposited a marked stone 12 ins. in the ground for $\frac{1}{4}$ Sec. Cor. dug pits 18 x 18 x 12 ins. N. and P. of stone $\frac{1}{4}$ ft. dist. and raised a mound of earth $1\frac{1}{2}$ ft. high $4\frac{1}{2}$ ft. base over it. In N. pit drove a stake 2 ft. long 2 ins. sq. 12 ins. in the ground marked $\frac{1}{4}$ S. on W. face

42.00

Road Lns. N.E. & S.W.

80.00

Deposited a marked stone 12 ins. in the ground for Cor to Secs 3, 4, 9 and 10, dug pits 18 x 18 x 12 ins in each Sec $5\frac{1}{4}$ ft. dist. and raised a mound of earth 2 ft. high $4\frac{1}{2}$ ft. base over it. In S E pit drove a stake 2 ins. sq. 2 ft. long 12 ins. in the ground marked T. 110, S 3 on N.E. R 22 E, S 10 on S.E. S. 9 on S.W. and S. 4 on N.W. faces, with 5 notches on S, and 3 notches on E edges.

Land level
Loil Photo
Good grass
No timber

Township

41 S.

Range

22 E.

G. and P. R.

Meridian.

Chains

East, on a random line between Sections 3 and 10.

Variation 13° 00' East.

40.00
19.94

Set temporary 1/4 Sec. cor.
Intersect N. 1/4 S. D. line 30
like D. of the Cor. to Secs.
2, 3, 10 and 11. Thence I run
D. 892-47 N. on a true line
bet. Secs. 3 and 10 with the
same va.

39.97

Deposited a marked stone 12 ins. in the
ground for 1/4 Sec. Cor. 1 1/2 x 1 1/2 x 1 1/2 ins.
E. and W. of stone 1/2 ft. dist. and raised
a mound of earth 1 1/2 ft. high 1 1/2 ft. base over
it. In E. pit drove a stake 2 ft. long 2 ins.
sq. 12 ins. in the ground marked 1/4 S. on N.
face.

19.94

The cor. to Secs. 3, 4, 9 and 10
Land level
Soil 1st rate
Good grass.
November.

Township

11 D.

Range

22 E.

Grand P. Co.

Meridian.

Chains

North, on a true line between Sections 3 and 4.

Variation $13^{\circ}00'$ East.

4000

Deposited a marked stone 12 ins. in the ground for $\frac{1}{4}$ Sec. Cor. dug pits 18 x 18 x 12 ins. N. and S. of stone $\frac{1}{4}$ ft. 1 ft. and raised a mound of earth $1\frac{1}{2}$ ft. high $3\frac{1}{2}$ ft. base over it. In N. pit drove a stake 2 ft. long 2 ins. sq. 12 ins. in the ground marked $\frac{1}{4}$ S. on N. face

7600 Cienega bro. E. & W.

79.90

Intersect 2^d Standard Parallel South 24.20. N. N. Stand. cor. to Secs

33 & 34 110 S. R. 22 E. which is a post set in ground with pits N. E. & W. of it and mound of earth around it ^{good order} _{acc. map}

Deposited marked stone 12 ins in the ground for closing cor. to Secs 34 & 4, dug pits 18 x 18 x 12 ins E. & W. & S. of cor. and raised a mound of earth 2 ft. high $4\frac{1}{2}$ ft. base over it. In E. pit drove a stake 2 in sq. 2 ft. long 12 ins in the ground marked C.C. 110 S. R. 22 E. on S. 13 on E. & S. 4 on W with 3 notches on E. & W. faces -

Land level -

Soil 1st Rate -

Good grass -

No timber -

Examine adjustments of west today and find them correct

Township 11 P. Range 22 E

G and P. Co. Meridian.

Chains Iron North, between Sections 32 and 33. ^{on S. side} ~~from cor. to Secs 4, 6, 32 & 33, recently established by~~

40.00 On easy descent. Variation 13° 00' East.

Deposited a marked stone 12 ins. in the ground for $\frac{1}{4}$ Sec. Cor. lay pits 18 x 18 x 12 ins. N. and S. of stone $\frac{1}{4}$ ft. dist. and raised a mound of earth 14 ft. high $\frac{1}{4}$ ft. base over it. In N. pit drove a stake 2 ft. long 2 ins. sq. 12 ins. in the ground marked $\frac{1}{4}$ S. on W. face.

80.00 Deposited a marked stone 12 ins. in the ground for Cor. to Secs 28, 29, 32 & 33 lay pits 18 x 18 x 12 ins. in each Sec. $\frac{1}{4}$ ft. dist. and raised a mound of earth 14 ft. high $\frac{1}{4}$ ft. base over it. In S E pit drove a stake 2 ins. sq. 2 ft. long 12 ins. in the ground marked T. 11 P. 328 on NE R 22 E. S 33 on SE N. 32 on S W. and S 29 on W faces, with 1 notch on S. and 4 notches on E edges.

Land rough and broken
Soil 2^d rate.
Good grass.
No timber.

Township 11 S Range 22 E
G. and P. R. Meridian.

Chains East, on a random line between Sections 28 and 33.
Variation 13° 00' East.

4000 Set a temporary $\frac{1}{4}$ sec cor.
8010 Intersect N. $\frac{1}{4}$ S. line 26 lks.
N. of cor. to Secs. 27, 28, 33, & 34
Whence I run N. 89° 49' E on
a true line bet. secs. 28 & 33
with same va.

40.05 Deposited a marked stone 12 ins. in the
ground for $\frac{1}{4}$ Sec. Cor. - dug pits 18 x 18 x 12 ins.
E. and N. of stone $\frac{1}{4}$ feet dist and raised
a mound of earth 1 $\frac{1}{2}$ ft. high $\frac{1}{4}$ ft. base over
it. In E. pit drove a stake 2 ft. long 2 ins.
sq. 12 ins. in the ground marked $\frac{1}{4}$ S. on N.
face.

80.10 The cor. Secs. 28, 29, 32 & 33 -
Land level
Soil 2^d rate
Good grass
No timber

Township 110 Range 22 E.
G. and D. Co. Meridian.

Chains North, between Sections 28 and 29.

Variation 13°-00' East.

4000

Deposited a marked stone 12 ins. in the ground for $\frac{1}{4}$ Sec. Cor. dug pits $18 \times 18 \times 12$ ins. N. and S. of stone $\frac{1}{4}$ ft. dist. and raised a mound of earth $1\frac{1}{2}$ ft. high $1\frac{1}{2}$ ft. base over it. In N. pit drove a stake 2 ft. long 2 ins. sq. 12 ins. in the ground marked $\frac{1}{4}$ S. on W. face

6000
8000

Rocky ridge has E & W.

Deposited a marked stone 12 ins. in the ground for Cor. to Secs 20, 21, 28 & 29 dug pits $18 \times 18 \times 12$ ins. in each Sec $5\frac{1}{4}$ ft. dist. and raised a mound of earth 2 ft. high $4\frac{1}{2}$ ft. base over it. In S E pit drove a stake 2 ins. sq. 2 ft. long 12 ins. in the ground marked T. 110, S. 21 on NE R 22 E, S 28 on S.E. T. 29 on S W and S. 20 on N W faces. with 2 notches on S. and 4 notches on E edges.

Land level and broken
 Soil 2^d rate -
 Good grass -
 No timber -

Township

11 N.

Range

22 E.

G. and S. R.

Meridian.

Chains

East, on a random line between Sections 21 and 28.

Variation 13° 00'

East.

- 4.000 Set temporary $\frac{1}{4}$ sec. cor.
- 78.50 Dry wash 13 lks wide Co. N.E.
- 80.08 Intersect N. & S. line 20 lks.
 C. of cor to Secs. 21, 27, 27 and
 28 Thence to run S. 89° 51' W.
 on a true line bet. Secs. 21
 and 28 with same va.
- 4.004 Set a Granite stone 12x10x6
 in. & in. in the ground for $\frac{1}{4}$ sec.
 cor. marked $\frac{1}{4}$ on N. face and
 raised a mound of stone along
 side. Pits impracticable -
- 80.88 The cor to Secs 20, 21, 28 and 29
 Land broken
 Soil & some
 Grass fair
 No timber

Township

11 S.

Range

22 E.

G. and S. R.

Meridian.

Chains

North, between Sections 20 and 21.

Variation $13^{\circ}-00'$ East.

Along east slope of Mt
ridge

4000

Set a malpais stone $16 \times 10 \times 4$
ins. 10 ins in the ground for $\frac{1}{4}$ sec.
cor. marked $\frac{1}{4}$ on N. face
and raised a mound of stone
alongside. Pit's impracticable -

8000

Set a malpais stone $16 \times 16 \times 10$ ins
10 ins. in the ground for cor. to sec.
16, 17, 20 + 21 marked with 3 notches
on S. and 4 notches on east edges
and raised a mound of stone
alongside. Pit's impracticable -

Surface - Mountainous & broken

Soil 3d rate

Good grass

No timber

Township 11 S. Range 22 E.
G. and S. R. Meridian.

Chains

East, on a random line between Sections 16 and 21.

Variation $13^{\circ}-00^{\circ}$ E. East.

Over broken country

- 40.00 Set temporary $\frac{1}{4}$ sec. cor.
 80.06 Intersect N. P. line 24 lbs N. of
 cor. to Secs. 15, 16, 21 and 22. There
 I run $N 89^{\circ} 50' 17''$ on a true
 line bet Secs 16 and 21
 with same va.
- 40.03. Set a malpais stone $10 \times 8 \times 7$ ins
 6 ins in the ground for $\frac{1}{4}$ sec. cor.
 marked $\frac{1}{4}$ on N. face and raised
 a mound of stone alongside, Pile
 impracticable
- 80.06 The cor. to Secs. 16, 17, 20 & 21
 Land Rough and broken.
 Soil 3d rate.
 Grass 2d rate.
 No timber.

Township

11 S

Range

22 E

G. and N. P.

Meridian.

Chains

North, between Sections 16 and 17.

Variation 13°-00' East.

Along east slope of Mt. ridge near foot

40.00

Set a malpais stone 20x10x6 ins 15 ins in the ground for 1/4 sec. cor. marked 4x on W. face and raised a mound of stone alongside. Pit is impracticable

80.00

Set a malpais 16x12x10 ins 10 ins in the ground for cor. to Secs. 8, 9, 16 and 17 marked with 4 notches on S. and 4 notches on E. edges. Pwd raised a mound of stone alongside. Pit is impracticable.

Land - Broken

Soil 25 or 30

Good grass

No timber -

Township

11 P

Range

22 E

S. and P. R.

Meridian.

Chains

East, on a random line between Sections 9 and 16.

Variation

132° 00'

East.

Surface nearly level

4.000 Set temporary $\frac{1}{4}$ sec. cor.

79.92 Intersect N. & P. line 40 chs.

N. P. cor. to Secs. 9, 10, 15 and 16

Thence I run N. 89° 43' 0" W. on
a true line between Secs.
9 and 16 with same or

39.96

Deposited a marked stone 12 ins. in the
ground for $\frac{1}{4}$ Sec. Cor. dug pits 18 x 18 x 12 ins.

E. and W. of stone $\frac{1}{2}$ ft. dist and raised
a mound of earth $1\frac{1}{2}$ ft. high $\frac{3}{4}$ ft. base over
it. In E. pit drove a stake 2 ft. long 2 ins.
sq. 12 ins. in the ground marked $\frac{1}{4}$ S. on N.
face.

79.92

The cor. to Secs. 8, 9, 16 & 17 -

Surface - level

Soil 2d run

Good grass

No timber

Township

110

Range

22 E

G. and S. R.

Meridian.

Chains

North, between Sections 8 and 9.

Variation $13^{\circ}00'$

East.

- 12.00 Road bno. N. 60 E. 4. 60° W.
- 15.00 Dry wash 20 ft wide Co. N. 75 E.
- 4.00 Set a malpais stone 14 X 10 X 9 ins. 9 in in the ground for 1/4 sec. cor marked 1/4 on W. face and raised a mound of stone alongside. Pits impracticable -
- 8.00 Set a malpais 10 X 8 X 7 ins. 6 ins in the ground for Cor. Secs. 4 5, 8 & 9 marked with 5 notches on S. and 4 notches on E. edge and raised a mound of stone alongside. Pits impracticable -
- Surface Level -
- Soil 25 ft or rocky -
- Good grass -
- No timber -

Township

11 S

Range

22 E

G. and S. R.

Meridian.

Chains

East, on a random line between Sections 4 and 9.

Variation $13^{\circ} 00'$ East.

- 40.00 Set temporary $\frac{1}{2}$ sec. cor.
- 80.10 Intersect N. & S. line 31 lbs.
N. of cor to Secs 3, 4, 9 and 10
Thence I run N. $89^{\circ} 47' 00''$
on a true line between Secs
4 & 9 with same $\frac{1}{2}$ sec.
- 40.05 Set a Malpais stone $10 \times 10 \times 6$
ins, $\frac{1}{2}$ ins in the ground for $\frac{1}{2}$ sec.
cor, marked $\frac{1}{2}$ on N. face and
raised a mound ^{stone} of around it.
It's impracticable -
- 80.10 The cor. to Secs 4, 5, 8 & 9.
Surface level.
Soil & strata
Good grass.
No timber.

Township

11 S Range 22 E

G. and S. R

Meridian.

Chains

North, on a ~~true~~ line between Sections 4 and 5.

Variation 13° 00' East.

Ascend

3800 Top of Mt. ridge bns. N.E. and S.W. and descend

4000 Pit a malpais stone 17x10x7 ins 12 ins in the ground for 1/4 sec. cor marked 1/4 on N. face and raised a mound of stone along side. Pit impracticable -

7600 Center valley bns. Nearly E & W
8030 Intersect 2^d Standard Pos. North 22-30. cno. N. Station? Cor to Sec.

32733 1/10 S. R 22 E. which is a stake set in the ground with pile N. E. W. of it & mound of earth around it - all well

Deposited marked stone 12 ins in the ground for corner to Secs 4 & 5. dug pit 18x18x12 ins E. N. W. of cor. and raised a mound of earth 2 ft high 4 1/2 ft diameter it
In E. pit drove a stake 2 ins sq. 2 ft. long 12 ins in the ground (marked C.C. 1.1) S. R 22 E. and S. 1/4 on E & W on N faces with 4 notches on E & 2 notches on W. faces
Dug all level & broken
Soil 1st rate
Good grass

Township 11 S Range 22 EG. and J. R. Meridian.

Chains

From Cor. to Sec. 5. 6 31737 ^{and 31737} ~~recently~~ established by me ^{me}
North, between Sections 31 and 32.Variation 13° 00' East.Along west slope of mt.
near top

4.500 Set a malpais stone 16x12x8 ins.
10 ins. in the ground for $\frac{1}{4}$ sec. cor.
marked $\frac{1}{4}$ on W. face and
raised a mound of stone along
side. Pits impracticable -

8.000 Set a granite stone 20x12x7 ins.
10 ins. in the ground for cor. to
Sec 29. 30 31736 marked with
1 notch on S, and 5 notches
on E. edges, and raised a
mound of stone along side -
Pits impracticable -

Surface Mountainous

Soil 3^d rateGood grazing
No timber

Township

11 D

Range

22 E

S. and S. R. E

Meridian.

Chains

East, on a random line between Sections 29 and 32.

Variation $13^{\circ}00'$ East.

Ascend

6.00

Top of Mt. ridge bet. N. W. and
Descend

40.00

Set temporary $\frac{1}{4}$ sec. cor.

80.28

Intersect N. & S. line 30 lbs S.
of cor to Secs. 28, 29, 32 & 33
Thence I run S. $89^{\circ}47'$ W. on
a true line between Secs 29
and 32 with same $\frac{1}{4}$.

40.14

Set a granite stone $16 \times 10 \times 8$ in
10 ins in the ground for $\frac{1}{4}$ sec. cor.
marked $\frac{1}{4}$ on N. face and raised
a mound of stone along side -
Pit impracticable

80.28

The cor. bet. Secs. 29, 30, 31 & 32.
Surface Mountainous
Soil 3^d rate
Grass 2^d rate -
No timber.

Township

11 S

Range

22 E

G. and S. R.

Meridian.

Chains

West, on a random line between Sections 30 and 31.

Variation $13^{\circ} 00'$ East.

Descend

40.00

Set temporary $\frac{1}{4}$ sec. cor.

58.30

Foot of Mt. ridge - dry wash
60 lks wide Course north -

77.60

Intersect N. bdy. of Sp 24 lks N.
of cor. to Secs. 25, 30, 31 & 36 recently
established by me - Thence I
run $N 89^{\circ} 50' E$. on a true line
bet. Secs. 30 and 31 with the
same va.

37.60

Set a malpais stone $16 \times 12 \times 7$
ins. 10 ins. in the ground for $\frac{1}{4}$ sec
cor. marked $\frac{1}{4}$ on N. face and
raised a mound of stone
across side. It's impracticable -

77.60

The cor. to Secs. 29, 30, 31 & 32.

Land - mountainous

Soil 25 rate

Grass fair
no timber

Township

11 S.

BOOK 722

Range

22 E.

48

G. and S. R.

Meridian.

Chains

North, between Sections 29 and 30.

Variation $18^{\circ} 00'$ East.

Along N.W. Mt. slope on
a gradual descent

40.00

Set a malpais stone $18 \times 12 \times 8$ ins
12 ins in the ground for $\frac{1}{4}$ sec. cor,
marked $\frac{1}{4}$ on N. face and raised
a mound of stone alongside.
Pits impracticable.

80.00

Set a Granite stone $16 \times 12 \times 8$ ins
10 ins in the ground for Cor. to Secs.
19, 20, 29 & 30 marked with 2
notches on N. and 5 notches on
E. edges and raised a mound
of stone alongside. Pits imprac-
ticable.

Surface - Mountains -

Soil 3^d rate -

Grass 2^d rate -

No timber -

I examine adjustments of my
solar inst. today and find
them correct -

Township

11 S

Range

22 E

E. and S. R.

Meridian.

Chains

East, on a random line between Sections 20 and 29.

Variation $13^{\circ}00'$

East.

Second Mt

12.00 Top Mt. ridge bcs. nearly N. & S.
Second4.00 Set temporary $\frac{1}{4}$ sec cor.79.90 Intersect N. & S. line 34 lbs N. of
cor. to Secs. 20, 21, 28 & 29. True
S run N. $89^{\circ}45' E$, on a true line
between Secs 20 and 29 with the
same va39.90 Set a masonry stone $16 \times 12 \times 10$
ins. 10 ins in the ground for $\frac{1}{4}$ sec. cor.
marked $\frac{1}{4}$ on N. face and raised
a mound of stone alongside
Pits impracticable79.90 The cor. to Secs. 19, 20, 29 & 30
Surface mountainous -
Soil - 3 δ rate -
Grass 2 δ rate -
No timber -

Township

11 S

Range

22 E

G. and S. R.

Meridian.

Chains

West, on a random line between Sections 19 and 30.

Variation 13° 00' East.

40.00

Descend N.W. slope of Mt
Set temporary 1/4 sec. cor.

70.00

Dry wash 140 lbs wide Co N.W.
Ascend

77.70

Intersect W. bdy. Sp. 20 lbs N.
of cor. to Secs. 19, 24, 25 and 30
Recently established by me
thence I run N 89° 51' E. on a
true line bet. Secs. 19 & 30 with the
same va.

37.70

Set a Mopass Stone 18 X 10 X 9 in
12 in in the ground for 1/4 sec. cor.
marked 1/4 on N. face and raised
a mound of stone along side.
Pit is impracticable -

77.70

The cor to Secs 19, 20, 29 & 30
Surface mountainous
Soil 3d rate
Grass 2d rate
No timber

Township

11 S

Range

22 E

G. and S. R.

Meridian.

Chains

North, between Sections 19 and 20.

Variation

13° 00'

East.

- 4000 Along N. & N.W. Mt. slope
Set a soapstone 18 X 12 X 8 ins.
13 ins. in the ground for N. Sec. cor.
marked X on N. face and raised
a mound of stone alongside
Pit's impracticable -
- 8000 Set a Granite stone 16 X 10 X 8 ins.
10 ins. in the ground for Cor.
to Secs. 17, 18, 19 & 20 marked
with 3 notches on S. and 5 notches
on E. edges and raised a mound
of stone alongside. Pit's
impracticable -
Surface of Mountainsides
Soil 3' white
Grass 2' white
No timber

BOOK 722
Range

118 22 E

Township

Grand D. Co.

Meridian.

Chains

East, on a random line between Sections 17 and 20.

Variation $13^{\circ}00'$ East.

Ascend Mt

21.00 Top - bro S. $8^{\circ}N$. slopes to N.
& E. - Descend4.00 Set temporary $\frac{1}{4}$ sec. cor.80.16 Intersect N. $\frac{1}{4}$ S. line 16 Secs

N. of cor. to Secs. 16, 17, 20 & 21.

Thence I run N. $89^{\circ}56'N$.
on a true line bet. Secs 17 and
20 with the same va40.08 Set a Malpais stone $18 \times 19 \times 6$
ins. 12 ins. in the ground for
 $\frac{1}{4}$ sec. cor. marked $\frac{1}{4}$ on N.
face and raised a mound of
stone alongside. It's imprac-
ticable

80.16 The cor. to Secs 17, 18, 19 & 20.

Land - mountainous -

Soil 3^d rateGrass 2^d rate

Township

11 S

Range

22 E

G. and S. R.

Meridian.

Chains

West, on a random line between Sections 18 and 19.

Variation $13^{\circ}00'$ East.

Descend

- 4.000 Set temporary $\frac{1}{4}$ sec. cor.
- 58.60 Dry wash 40 lbs. wide. Co. North
foot of ridge - Ascend
- 77.84 Intersect N. bdy. of Sp. 18 lbs.
N. of cor. to Secs 13, 18, 19 & 24 thence
I run N. $89^{\circ}52'$ E. on a true
line bet. Secs. 18 and 19 with
the same va.
- 37.84 Set a melpais stone 16x14x8
ins 10 ins in the ground for $\frac{1}{4}$
sec. cor. marked $\frac{1}{4}$ on N. face
and raised a mound of stone
alongside. Pits impracticable.
- 77.84 The cor. to Secs. 17, 18, 19 & 20
Surface - Mountainous -
Soil 3^d rate -
Grass 2^d rate -
No timber -

Township

11 S

Range

22 E

G. and S. R.

Meridian.

Chains

North, between Sections 17 and 18.

Variation $13^{\circ}00'$ East.Descend NW, slope of Mt
ridge -

40.00

Set a granite stone $20 \times 18 \times 15$ ins
15 ins. in the ground for $\frac{1}{4}$ sec
cor. marked $\frac{1}{4}$ on N. face and
raised a mound of stone 5"
alongside. Pits impracticable -
Center valley

45.00

House 2 chs west - road to N. E.

60.00

Creek 10 lks wide Co. N. 40° E.

80.00

Set a malpais stone $20 \times 18 \times 10$ ins in
a mound of stone for Cor. to
Secs. 7, 8, 17 and 18 marked with
4 notches on S. and 5 notches
on E. edges

Land - Mountainous & valley

Soil 17 + 25 rate

Good grass

Scattering oak along creek

Township

11 N

Range

22 E

G. and S. R.

Meridian.

Chains

East, on a random line between Sections 8 and 17.

Variation $13^{\circ}-00'$ East.

- 40.00 Set temporary $\frac{1}{4}$ sec. cor
- 42.80 Dry wash 20 lbs. wide Co. $N10^{\circ}E$.
- 51.60 Road-Course NE and SW
- 80.10 Intersect $N. \frac{1}{2}$ of S . line 16 lbs N .
of cor to Secs. 8, 9, 16 & 17
thence $S. \frac{1}{2}$ ^{run} $N. 89^{\circ}-53' W$. on a true
line bet. Secs. 8 & 17 with the
same ra
- 40.00 Set a malpais stone $12 \times 10 \times 8$ ins
in a mound of stone for $\frac{1}{4}$
sec. cor. marked $\frac{1}{4}$ on N . face
and raised a mound of stone
alongside. Pit is unprofitable
- 80.10 The cor. to Secs. 7, 8, 17 & 18 -
Surface level
Soil 2 ft or more -
Good grass -
No timber -

Township

11 S

Range

27 E

G. and S. R.

Meridian.

Chains

West on a random line between Sections 7 and 18.

Variation 13° 00' East.

Ascend S.E. mt. slope

4.00

Set 1/4 temporary cor.

53.00

Top of Mt. opens to N.E. & S.W.
Descend

77.68

Intersect N. bdy. Sp. 18. Nks.
N. of cor to Secs 7, 12, 13 & 18
recently established by [unclear]
since I run N. of [unclear] 52' E. on
a true line bet. Secs. 7 & 18
with the same va.

37.68

Set a Malpais stone 18x12x7
ins. 12 ins in the ground for 1/4
sec. cor. marked 1/4 on N. face
and raised a mound of stone
alongside. Pits in [unclear]

77.68

Set cor to Secs. 7, 12, 13 & 18.
Surface Mountainous
Ditch 35 rods
Grass 25 rods
No timber -

Township

11 S.

Range

27 E.

G. and S. R.

Meridian.

Chains

North, between Sections 7 and 8.

Variation $13^{\circ}00'$ East.

31.00

Ascend P.C. mt. slope
Top of mt. ridge bet. N.E. and
S.W. Descend

40.00

Set a malpais stone 12
 12×9 ins. 8 ins. in the ground
for $\frac{1}{4}$ sec. cor. marked $\frac{1}{4}$ on
N. face and raised a mound
of stone alongside. Pit
impracticable -

80.00

Set a sandstone $22 \times 18 \times 4$ ins.
16 ins in the ground for Cor. to
Sec. 5, 6, 7 & 8 marked with 5
notches on S. & E. edges and
raised a mound of stone along
side. Pit impracticable -

Surface - Mountains -

Soil - 3^d rate -Grass 2^d rate -

No timber -

Township

11 S.

Range

22 E.

S. and S. R.

Meridian.

Chains

East, on a random line between Sections 5 and 8.

Variation

13° 00'

East.

Issued
17th Apr.

34.00

Base - Dry wash 15 lps. wide
Course North -

40.00

Set temporary $\frac{1}{4}$ sec. cor.

80.08

Intersect N. and S. line 24 lps.
N. of cor. to Secs 4, 5, 8 & 9
Thence I run N. 89° 50' W. in
a true line bet. Secs 5 and 8
with the same v.l.

40.04

Deposited a marked stone 12 ins. in the
ground for $\frac{1}{4}$ Sec. Cor. dug pits 18 x 18 x 12 ins.E. and W. of stone 5 $\frac{1}{2}$ feet dist and raised
a mound of earth 1 $\frac{1}{2}$ ft. high 3 $\frac{1}{2}$ ft. base over
it. In E. pit drove a stake 2 ft. long 2 ins.
sq. 12 ins. in the ground marked $\frac{1}{4}$ S. on N.
face.

80.08

The cor. to Secs. 5, 6, 7 & 8.
Surface mountainous -
Soil 35 rods.
Grass 25 rods.
No timber -

Township

11 S.

Range

22 E

G. and S. R.

Meridian.

Chains

West, on a random line between Sections 6 and 7.

Variation $13^{\circ}00'$ East.

Ascend Mt. Spurr

8.00

Top - to N. & S. descend

32.00

Dry wash 20 lbs wide Co. N.

4.00

Set temporary $\frac{1}{4}$ sec cor.

77.64

Intersect N. body Sp. 20 lbs.

N. of cor to Secs 1, 6, 7 & 8.

^{frequently intersected}
_{by}Hence S. N. 89 $^{\circ}$ 51' E. on a

true line between Secs 6 and

7 with the same va

37.64

Set a malpais stone 14 X 12 X 9

ins. 10 ins in the ground for $\frac{1}{4}$ sec. cor. marked $\frac{1}{4}$ on N. face

and raised a mound of straw

along side. (It is impracticable

77.64

The cor to Secs 5, 6, 7 & 8.

Surface broken & mountainous

Soil 3 δ rateGrass 2 δ rate

No timber

Township

11 S

Range

22 E

Sand R.

Meridian.

Chains

North, on a ~~reference~~^{true} line between Sections 5 and 6.

Variation

13° 00

East.

Corr rough broken surface
gradually ascending

40.00

Set a Malpais stone 16x10x6
ins. 10 ins in the ground for $\frac{1}{2}$ sec.
cor. marked $\frac{1}{4}$ on N. face
and raised a mound of stone
alongside. Pits impracticable -

42.10

Top of Mt. Bro N. 80° E. 480 W.

78.00

Dry wash 100 lbs wide Co. E.

80.10

Intersect 2^d Standard Parcel
South 27, 31, Chs N. & Sand Cor'd Secs
31 & 32 T. 10 S. R. 22 E. which is post set in the
ground with pits N. E. W. of it & mound of earth around it
and 4 walnut bearing trees cor in good condition

Set a Granite stone 20x14x12 ins 16 ins
in the ground for closing corner to Secs
5 & 6 marked C.C. with 1 notch on
N. and 5 notches on E. & raised a
mound of stone alongside. Pits
impracticable -

Surface Mountains

Soil 35 rate

Good grass

Walnut & Sycamore timber on Wash

GENERAL DESCRIPTION.

The western portion of this township is mountainous while the eastern part is generally level or rolling in its character adopting it with its excellent growth of grass together with the plentiful supply of water in the adjacent mountains to the wants of the stock man to a degree much above the average

1870-1871

[The remainder of the page contains faint, illegible handwriting on lined paper.]

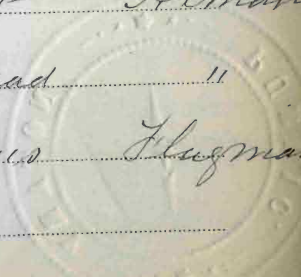
Final Oaths for Surveys.

LIST OF NAMES. BOOK 722

A List of the Names of Individuals employed by

R. L. Powers U. S. Deputy Surveyor to assist in running, measuring and marking the lines and corners described in the foregoing Field Notes of the survey of the N. Edges of Tps. 12, 13, 14 and 15 S. Range 20 E. and the N. Edg. of T^e 11 S. R. 22 E. the W. Edg. of Tps. 12 S. R. 22 E. and the W. Edg. of Tps. 13 & 14 S. Range 20 E. and the Subdivisions of Tps. 12 & 13 S. R. 20 E. and T^e 11 S. R. 22 E. of the ^{9th} principal base and meridian in the Territory of Arizona, showing the respective capacities in which they acted.

- Sidney Thomas Chamman*
- Oswald Cogswell*
- Tom Cliphart*
- Richard Whithead*
- John Williams*



Final Oaths of Assistants.

We hereby certify that we assisted R. E. Powers.

U. S. Deputy Surveyor, in surveying

The N. Bdy. of Twp. 12. 12. 14 & 15 S. R. 23 E. and the N.
Bdy. of Twp. 11 S. R. 22 E. and the N. Bdy. of 12 S. 14 E.
R. 22 E. and the N. Bdy. of Twp. 12 S. R. 22 E.
and the subdivisions of Twp. 12. 5. 12 S. R. 22 E.
and Twp. 11 S. R. 22 E.

of the principal base and meridian in the Territory of Arizona,
as are represented in the foregoing field notes as having been
surveyed by him and under his direction; and that said Survey
has been in all respects, to the best of our knowledge and belief,
well and faithfully surveyed, and the corner monuments es-
tablished according to the instructions furnished by the U. S.
Surveyor-General for Arizona.

Sidney Thomas Chamsuan

Osmond Cogswell "

Tom Oliphant Arman

Richard Whitehead "

John Williams Flagman

Subscribed and sworn to before me this 14th

day of June 1884

J. B. McLaughlin
Notary Public.

Final Oath of U. S. Deputy Surveyor.

I Ridgely W. PowersUnited States Deputy Surveyor, do solemnly swear that in
pursuance of instructions received from J. H. RobbinsU. S. Surveyor General for Ari-
zona bearing date of the 7th day of September1884. I have well, faithfully, and truly, in my own proper
person and in strict conformity, with the instructions furnish-
ed by the U. S. Surveyor General for Arizona, the surveying
manual and the laws of the United States surveyed the WCo. of Tps. 13, 14 & 15 S. R. 23 E. and the N. Co. of
Tps. 11 S. R. 22 E. & the S. Co. of Tps. 13 & 14 S.
R. 23 E. & the S. Co. of Tps. 12 S. R. 22 E. and the
Subdivisions of Tps. 12 & 13 S. R. 23 E. & Tps. 11 S. R. 22 E.of the principal base and meridian in the Territory of Ari-
zona, as are represented in the foregoing field notes as having
been surveyed by me and under my direction; and I do further
solemnly swear that all the corners of the said survey have been
established and perpetuated in strict accordance with the survey-
ing manual, printed instructions, the special written instruc-
tions of the U. S. Surveyor General for Arizona, and in the

specific manner described in the field notes, and that the foregoing are the true field notes of such survey, and should any fraud be detected I will suffer the penalty of perjury under the provisions of an Act of Congress approved August 8, 1846.

Ridgley C. Powers
U. S. Deputy Surveyor.

Subscribed and sworn to before me, this 14th

day of June 1884

J. B. McLanahan
Notary Public.

Final Oaths for Surveys.

LIST OF NAMES.

A list of the names of the individuals employed by Ridgely C. Powers U. S. Deputy Surveyor, to assist in running, measuring, and marking the lines and corners described in the foregoing field notes of the survey of the subdivision and ~~meander~~^{minor} lines of Tps. 12 13 R. 20 E. and Tps. 11 S. R. 22 E. of the ~~principal~~^{95th R.} base and meridian in the Territory of Arizona, showing the respective capacities in which they acted.

Johnston B. McLaughlin Compassman.
George W. Russell Chainman.
Joseph Schwarz Chainman.
Joseph F. Davis Axman.
Edward Lee Axman.
Michael Neek Flagman.

Final Oaths of Assistants.

We hereby certify that we assisted Ridgely C. Powers U. S. Deputy Surveyor, in surveying all those parts or portions of the subdivision and ~~meander~~^{minor} lines of township 12 13 R. 20 E. and Tps. 11 S. R. 22 E. of the ~~principal~~^{95th R.} base and meridian, Territory of Arizona, as are represented in the foregoing field notes as having been surveyed by him and under his direction; and that said survey has been in all respects, to the best of our knowledge and belief, well and faithfully surveyed, and the corner monuments established, according to the instructions furnished by the U. S. Surveyor General for Arizona.

Johnston B. McLaughlin Compassman.
George W. Russell Chainman.
Joseph Schwarz Chainman.
Joseph F. Davis Axman.
Edward Lee Axman.
Michael Neek Flagman.

Subscribed and sworn to before me this 14th day of June 1888

[Seal.]

R. C. Powers

Notary Public.

Final Oath of U. S. Deputy-Surveyor.

I, Ridgely C. Powers U. S. Deputy Surveyor, do solemnly swear that in pursuance of instructions received from J. M. Robbins U. S. Surveyor-General for Arizona, bearing the date of the 7th day of September 1888 I have well, faithfully, and truly, in my own proper person, and in strict conformity with the instructions furnished by the U. S. Surveyor-General for Arizona, the surveying manual, and the laws of the United States, surveyed all those parts or portions of the subdivision and ~~meander~~^{minor} lines of township 12 13 R. 20 E. and Tps. 11 S. R. 22 E. of the ~~principal~~^{95th R.} base and meridian, in the Territory of Arizona, as are represented in the foregoing field notes as having been surveyed by me and under my directions; and I do further solemnly swear that all the corners of said survey have been established and perpetuated in strict accordance with the surveying manual, printed instructions, the special written instructions of the U. S. Surveyor-General for Arizona, and in the specific manner described in the field notes, and that the foregoing are the true field notes of such survey, and should any fraud be detected I will suffer the

BOOK 722

List of Names.

of the Names of the individuals employed to assist
in leveling, measuring, or making the lines and corners
indicated in the foregoing Field Notes of

of the respective capacities in which they acted.

Compassman.

Chainman.

Chainman.

Axeman.

Final Oath of Assistants.

We hereby certify that we assisted
Deputy Surveyor, in surveying

and that said survey has been in all respects, to the best of our knowledge and belief, well and faithfully surveyed, and the boundary monuments planted according to the instructions furnished by the Surveyor-General.

Subscribed and sworn to before me, this day of
187

U. S. Deputy Surveyor.

Final Oath of Deputy Surveyor.

I,
 Deputy-Surveyor, do solemnly swear that, in pursuance
 with a contract with
 United States Surveyor-General for the Territory of Arizona,
 bearing date the day of 18 I have
 well, faithfully, and truly, in my own proper person, and
 in strict conformity with the instructions furnished by the
 Surveyor-General, the Surveying Manual, and the laws
 of the United States, surveyed all those parts or portions of

Request of W. H. Miller

as are represented in the foregoing Field Notes as having

U. S. Surveyor General's Office.

Tucson, A. T.

August 8, 1884.

The foregoing Field Notes of the surveys of
Subdivision lines of
Township 11 South
Range 27 East of the
Gila & Salt River Meridian
in the Territory of Arizona executed by

N. C. Powers

U. S. Deputy Surveyor, under his contract dated

August 23^d, 1883.

having been critically examined, the necessary corrections and explanations made, the said Field Notes and the surveys they describe are hereby approved.

U. S. Surveyor General for the District of Arizona.

BOOK 155

BOOK 722

T 11 S R 22 E

| | |
|--------|--|
| Chains | <p>Survey commenced April 30th 1880- I commenced at monument of stone marked 1/4 being the 1/4 cor between Secs 17 & 18 and took foresight on N E cor of Sec 18 Var 13° 20' E from which Adobe Stone bears N 18° 30' W 4.26 chs</p> |
| | <p>Thence ran West</p> |
| 20.00 | <p>and built a monument of stone thence ran North</p> |
| 20.00 | <p>and built a monument of stone thence ran East</p> |
| 20.00 | <p>to sec line between Secs 17 & 18 and built mon-</p> |
| | <p>ument of stone thence ran North</p> |
| 20.00 | <p>to monument of stone marked with 4 notches</p> |
| | <p>on South side and 5 notches on East side</p> |
| | <p>being cor of Secs 7, 8, 17 & 18. thence ran East</p> |
| 40.00 | <p>to monument of stone marked 1/4 being 1/4 sec</p> |
| | <p>corner between Secs 8 & 17 thence ran South-</p> |
| 20.00 | <p>and built monument of stone thence ran West</p> |
| 20.00 | <p>and built monument of stone thence ran South</p> |
| 15.00 | <p>and built monument of stone thence ran West</p> |
| 20.00 | <p>and built monument of stone thence ran South</p> |

69

Chains

BOOK 722

5.00 to place of beginning
making 150 acres claimed by A C Hor
as Desert land on which he has made
final payment

H M Breakenridge
U S Deputy Surveyor

Final Oaths for Surveys.

LIST OF NAMES.

BOOK 722

A List of the Names of Individuals employed by
 W^m Brackenridge U. S. Deputy Surveyor to
 assist in running, measuring and marking the lines and
 corners described in the foregoing Field Notes of the survey of
 the Desert Land Claim of
 A C Hooker situated in T 11.
 South R 22 E

of the principal base and meridian in the Territory of Arizona,
 showing the respective capacities in which they acted.

J M G Biddle

Chairman



Final Oaths of Assistants.

I ~~we~~ hereby certify that ~~we~~ assisted W M
Brainerd U. S. Deputy Surveyor, in surveying
The Desert Land Claim of A C Hooker
situated in Sec^o 17 18 19 18
R 22 E

of the principal base and meridian in the Territory of Arizona,
as are represented in the foregoing field notes as having been
surveyed by him and under his direction; and that said Survey
has been in all respects, to the best of our knowledge and belief,
well and faithfully surveyed, and the corner monuments es-
tablished according to the instructions furnished by the U. S.
Surveyor-General for Arizona.

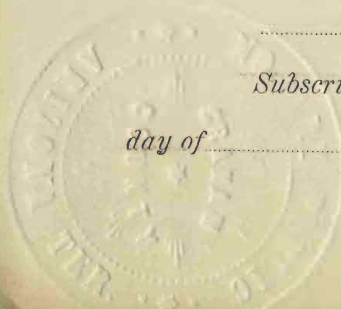
J. M. Biddis
Chairman

Subscribed and sworn to before me this 1st

day of

May 1885

Edward T. Taylor
Notary Public.



Final Oath of U. S. Deputy Surveyor.

I H M Brewsteridge

United States Deputy Surveyor, do solemnly swear that in
pursuance of instructions received from Royal A

Johansen

U. S. Surveyor General for Ari-

zona bearing date of the 24th day of April

188⁴ I have well, faithfully, and truly, in my own proper
person and in strict conformity, with the instructions furnish-
ed by the U. S. Surveyor General for Arizona, the surveying
manual and the laws of the United States surveyed the

Desert Land Claims of A C Hooker
situated in Sec 17 & 18 T. 11 S
R 22 E

of the principal base and meridian in the Territory of Ari-
zona, as are represented in the foregoing fields notes as having
been surveyed by me and under my direction; and I do further
solemnly swear that all the corners of the said survey have been
established and perpetuated in strict accordance with the survey-
ing manual, printed instructions, the special written instruc-
tions of the U. S. Surveyor General for Arizona, and in the

specific manner described in the field notes, and that the foregoing are the true field notes of such survey, and should any fraud be detected I will suffer the penalty of perjury under the provisions of an Act of Congress approved August 8, 1846.

W M Breakwinds
U. S. Deputy Surveyor.

Subscribed and sworn to before me, this

day of May 1885

Edward W. Lyne
Notary Public.



Bue
Th
si
R

of t
as
sur
has
well
tabl
Su

de