

12-26 6.
Corrective Resurvey. E. Bdy^{1/4} Subs.
T. 12, S., R. 26, E.
Contzen. D.S.

"Subdivisions"

No. 794 BOOK 794

4-671

FIELD NOTES
GENERAL LAND OFFICE.

794

No. 794

BOOK 794

Field - Notes
of corrective resurvey
of the East boundary
and section lines bet
sections 1 & 12 - 12 & 13
- 13 & 24 - 24 & 25 and
— 25 & 36 —

of
T. 12 S. R. 26 E.
— of the —
Gila and Salt River,
Base and Meridian
— in the —

Territory of Arizona
as resurveyed by

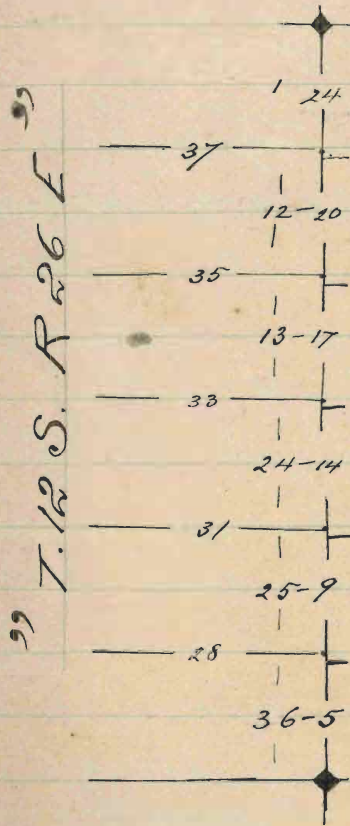
Philip Coutzen
U. S. Deputy Surveyor
Under his contract 7045
dated June 14. 1897

Resurvey commenced March 30. 1897
Resurvey completed March 31. 1897

2

BOOK 794

Index



Preliminary Oaths of Assistants.

We, W. W. Miller

and
do solemnly swear that I will well and faithfully
execute the duties of Chain Carrier; ^{axe man} that I will
level the chain upon even and uneven ground, and
plumb the tally pins, either by sticking or dropping
the same; that I will report the true distance to
all notable objects, and the true lengths of all lines
that I assist in measuring, to the best of my skill
and ability, and in accordance with instructions
~~given us, in the survey of the~~ and I will
well and truly perform the
duties of axe man in the
establishment of corners and
other duties in accordance
with instructions given to me
in the survey of the boundary
of the Gila and Salt River Base and Meridian in
the Territory of Arizona.

W. W. Miller Chainman. ^{and axe man}
..... Chainman.
..... Chainman.
..... Chainman.

Subscribed and sworn before me, this 29th
day of March 1899

William G Power
Notary Public.

[SEAL.]

My Commission expires Aug 15th 1902

In compliance with
letter from the Surveyor
General, dated March
10th 1899, instructing
me to remark and
reestablish the old
corners on the East
boundary of T. 12 S.
R. 26 E. for sections
on the East only
and to establish
new corners at
intervals of 40
and 80 chs. from
the S. E. Cor. of
T. 12 S. R. 26 E. Working
for secs. on the
West only, I proceeded
to the field March 29th 1899

Corrective resurvey of the E. boundary
chs.

Survey commenced
March 30. 1899, and
executed with a Young
& Sons light mountain
transit with solar
attachment. I examined
and tested the instrument
on the true meridian
at Tucson, Arizona
March 28th and found
the same to be in
perfect adjustment
I begin at cor. of
townships 12 and 13
South, ranges 26 and
27 East, as heretofore
described. ^{March 30. 1899} At this
cor. at 9^h 15^m a. m.,
l. m. v., I set off

of T. 12 S. R. 26 E - Continued
Chs.

32° 20' on the lat. arc,
30 52' N., on the decl.
arc, and determine
a true meridian
with the solar.

Thence I run

N 0° 5' E, bet. secs. 31 ⁴/₃₆

Over gently rolling land

39.87 Reestablish original

1/4 sec. cor. by setting
a sand stone 16x10x6

ins., 11 ins. in the ground

and mark the same

1/4 S. 31 on E. face

and raise a mound

of stone 2 1/2 ft. base,

1 1/2 ft. high, E. of cor.

Its impracticable
to destroy mound of stone on the W.

40.00 Set a sandstone

Corrective resurveys of the E. boundary
chs.

- 16 x 8 x 6 ins., 11 ins.
in the ground for
1/4 sec. cor. for Sec. 36,
marked 1/4 S. 36
on W. face, and raise
a mound of stone
2 1/2 ft. base, 1 1/2 ft. high
W. of cor. *its impracticable*
- 42.95 Dry wash, 10 fms. wide,
course N. E.
- 76.74 Middle of new
track of the Southern
Pacific Railroad,
bears $N 84 \frac{1}{2}^{\circ} E$ ^{2/3} of $S 84 \frac{1}{2}^{\circ} W$
- 79.80 Reestablish original
sec. cor., by setting
a granite stone 18 x 10 x 6
ins., 12 ins. in the
ground, for sec. s.

of T. 12 S. R. 26 - Continued
Chs.

30 and 31, marked
12 S. S. 30 on N.E.

27 E. S. 31 on S.E.

faces, with 1 notch
on S., and 5 notches
on N. edges; dig pits

24 x 24 x 12 ins., in

secs. 30 and 31, 6 ft.

dist. and raise a

mound of earth

2 ft. base, 4 ft.

high, E. of cor.

cover up pits in

secs. on the West.

80.00 Set a granite
stone 18 x 8 x 6 ins., 12

ins., in the ground

for cor. of secs. 25 ²/₃ / 30,

marked

Corrective resurveys of the E. boundary
chs.

12 S. S. 25 on N. W.,
26 E. S. 36 on S. W.,
faces, with 1 notch
on S. and 5 notches
on N. edges; dig pits
24 x 24 x 12 ins. in
sec. 25 and 36, 6 ft
dist., and raise a
mound of earth 4 ft.
base, 2 ft. high,
N. of cor.

Land gently rolling
Soil, gravelly loam,
2nd and 3rd rate
No timber, under-
growth scattering
mesquite and Yucca

of T. 12 S. R. 26 E. - Continued

N 0° 5' E, bet. secs 25²/₃₀

Over rolling land

3.57 Enter valley, course E

6.93 Telegraph line, bears
N 64¹/₂° E and S 64¹/₂° W

7.73 Abandoned track
of the Southern
Pacific Railroad,
bears N 64¹/₂° E and S 64¹/₂° W

8.06 Dry wash, 15 Mts wide,
course E.

8.80 Western Union, telegraph
line, bears N 64¹/₂° E
and S 64¹/₂° W

9.49 Road from Willcox
to Bowie, bears E and W.

13.06 Sand wash, 3 chs. wide,
course E.

21.57 Leave valley, course E,

Corrective resurvey of the E. boundary
Chs.

- and ascend mesa
- 23.57 Top of mesa, bears E+W.
- 27.57 Draw, 100 yds. wide, course E.
- 29.07 Descend
- 30.07 Foot of descent, bears
E. and W.
- 38.07 Ascend
- 39.52 Reestablish original
¼ sec. cor., by setting
a malpais stone 18x12x8
ins., ^{12 ins.} in the ground
and mark the same
¼ S. 30 on E. face;
re dig pits 18x18x12
ins., N. and S. of stone,
3 ft. dist., and raise
a mound of earth
3 ft. base, 1½ ft
high, E. of cor.

of T. 12 S. R. 26 E. - Continued
Chs

I destroy the mound
of earth on the W.

40.00 Set a volcanic
stone $16 \times 6 \times 6$ ins.,
11 ins. in the ground
for $\frac{1}{4}$ sec. cor. for
Sec. 36, marked

$\frac{1}{4}$ S. 36 on W. face,
dig pits $18 \times 18 \times 12$ ins.,
N and S. of stone,
3 ft. dist., and raise
a mound of earth
 $3\frac{1}{2}$ ft. base, $1\frac{1}{2}$ ft.
high, W. of cor.

Top of ascent

44.17 Gulch, 4 lks. wide,
course S. E.

69.57 Descend

72.57 Foot of descent,

Corrective resurvey of the E. boundary
Chs.

- bears E. and W.
- 72.57 Enter dry creek,
course E.
- 76.57 Leave dry creek,
course E.
- 78.57 Ascend
- 79.57 Reestablish original
sec. cor. by setting
a malpais stone
18 x 6 x 5 ins., 12 ins.,
in the ground for
cor. of sees. 25 and 30,
marked
12 S. S. 19 on N.E.,
27 E. S. 30 on S.E. faces,
with 2 notches on
S. and 4 notches on
N. edges; and
raise a mound of

of T. 12 S. R. 26 E - Continued
Chs.

stone $2\frac{1}{2}$ ft. base,
 $1\frac{1}{2}$ ft. high, E of cor.
Pits impracticable
I destroy mound of
stone on the W.

80.00 Set a malpais
stone $18 \times 8 \times 6$ ins,
12 ins. in the ground
for cor. of secs.

24 and 25, marked
12 S. S. 24 on N.W.
and 26 E. S. 25 on S.W.
faces, with 2 notches
on S and 4 notches
on N. edges; and
raise a mound
of stone $2\frac{1}{2}$ ft. base
 $1\frac{1}{2}$ ft. high, W. of cor.
Pits impracticable

Corrective resurvey of the E. boundary
chs.

Land rolling ³/₄ level
Soil gravelly loam;
2nd rate

No timber, undergrowth,
cats claw and yucca

No. 5 'E. bet. secs.

19 and 24

Over rolling land

39.59 Reestablish original
¹/₄ sec. cor. by setting
a granite stone 16 x 12 x 5
ins., 11 ins. in the ground
and mark the same
¹/₄ S. 19 on E. face,
redig pits 18 x 18 x 12 ins.,
N. and S. of stone 3 ft
dist., and raise a
mound of earth 3 ¹/₂ ft.

of T. 12 S. R. 26 E. - Continued
Chs.

base, $1\frac{1}{2}$ ft. high
E. of cor. - I destroy
mound of earth on
the West.

40.00 Set a malpais
stone $16 \times 8 \times 5$ ins.,
11 ins. in the ground
for $\frac{1}{4}$ sec. cor. for
sec. 24, marked
 $\frac{1}{4}$ S. 24 on W. face.
Dig pits $18 \times 18 \times 12$ ins. $\frac{1}{4}$ and S. of
stone 3 ft. dist.
and raise a mound
of earth $3\frac{1}{2}$ ft. base,
 $1\frac{1}{2}$ ft. high, W. of cor.

79.51 Reestablish original
sec. cor. by setting
granite stone $14 \times 8 \times 7$
ins., 9 ins. in the ground
for cor. of secs. 18 and 19,
marked

Corrective resurvey of the E. boundary
Chs.

12 S. S. 18 on N. E. and
27 E. S. 19 on S. E. faces,
with 3 notches on
N. and S. edges; dig
pits 24 x 24 x 12 ins. in
secs. 18 and 19, 6 ft.
dist. and raise a
mound of earth
4 ft. base, 2 ft. high
E. of cor. I cover
up pits in secs. on
the west.

80.00 Set a malpais
stone 18 x 10 x 6 ins.,
12 ins. in the ground
for cor. of secs.
13 and 24, marked
12 S. S. 13 on N. W. and
26 E. S. 24 on S. W. faces,

of T. 12 S. R. 26 E. - Continued
Chs.

with 3 notches on
N. and S. edges.
dig pits, ^{24 x 24 x 12 ins} in sees.
13 and 18, 6 ft. dist.
and raise a mound
of earth 4 ft. base
2 ft. high, W. of cor.
Land rolling
Soil, gravelly; 2nd rate
No timber; underground
mesquite and cats claw

No. 5 'E., bet. sees 13 ^{2 3/4} / 18

Over rolling land

3.53 Dry wash, 10 lbs. wide,
course E., thence S. E.

39.21 Reestablish original
1/4 sec. cor. by setting
a granite stone

Corrective resurvey of the E. boundary
Chs.

18x8x8 ins., 12 ins., in
the ground and mark
the same $\frac{1}{4}$ S. 18
on E. face; redig
pits 18x18x12 ins.,
N. and S. of stone,
3 ft. dist. and raise
a mound of earth
3 $\frac{1}{2}$ ft. base, 1 $\frac{1}{2}$ ft. high,
E. of cor. I destroy
mound of earth on the
West.

79.13 Reestablish original
sec. cor., by setting
a sand stone 18x10x8
ins., 12 ins. in the
ground for cor
of secs. 7 and 18,
marked

of T. 12 S. R. 26 E - Continued
Chs.

12 S. S. 7 on N. E. ^{2nd}
27 E. S. 18 on S. E. face,
with 4 notches on
S. and 2 notches
on N. edges; dig
pits 24 x 24 x 12 ins.
in secs. 7 and 18,
6 ft. dist, and raise
a mound of earth
4 ft. base, 2 ft. high
E. of cor. I cover
up pits in secs.
on the West.

80.00 Set a malpais ^{stone}
18 x 8 x 6 ins., 12 ins.
in the ground for
cor. of secs. 12 and 13,
marked

12 S. S. 12 on N. W. ^{3rd}

Corrective resurvey of the E. boundary
Chs.

26 E. S. 13 on S.W. faces,
with 4 notches on S,
and 2 notches on N.
edges; dig pits $24 \times 24 \times 15$
ins. in secs. 12 and 13,
6 ft. dist. and raise
a mound of earth
4 ft. base, 2 ft. high
W. of cor.

Land rolling
Soil loam; 3rd rate
No timber; undergrowth
mesquite, cats claw ^{2nd}
scattering Jucca.

No 5 E, bet. secs. 7 ^{2nd} & 12
Over rolling ^{2nd} mountainous
land

.40 Dry wash, 35 fks. wide,

of T. 12 S. R. 26 E - Continued

Chs.

course Westerly

2.90 Dry wash, 20 lks. wide,
course N.W.

29.90 Begin to ascend

38.97 Reestablish original

$\frac{1}{4}$ sec. cor. by setting
a granite stone

15 x 8 x 8 ins., 10 ins.

in the ground and

mark the same

$\frac{1}{4}$ S. 7 on E. face,

and raise a mound

of stone 2 $\frac{1}{2}$ ft. base,

1 $\frac{1}{2}$ ft. high, E. of cor.

Pits impracticable

I destroy mound of

stone on the West

39.40 Gulch, 5 lks. wide,

course S.W.

Corrective resurvey of E. boundary
chs.

- 40.00 Set a sandstone
18 x 8 x 6 ins., 12 ins. in
the ground for $\frac{1}{4}$ sec.
cor. for sec. 12, marked
 $\frac{1}{4}$ S. 12 on W. face;
and raise a mound
of stone 2 $\frac{1}{2}$ ft. base,
1 $\frac{1}{2}$ ft. high, W. of cor.
Pits impracticable
- 46.90 Top of ascent,
bears N. E. and S. W.,
and descend
- 57.90 Foot of descent
- 58.15 Dry wash, 10 fms. wide,
course S. W. ascend
- 71.90 Top of ascent bears
N. E. and S. W., descend
- 76.90 Foot of descent
- 78.00 Ravine, 10 fms. wide,

of T. 12 S. R. 26 E. - Continued

Chs.

78.90 course S.W., ascend
 Reestablish original
 sec. cor. by setting
 a granite stone $6 \times 8 \times 6$
 ins., 11 ins. in the
 ground for cor. of
 secs. 6 and 7, marked
 12 S. S. 6 on N.E., and
 27 E. S. 7 on S.E. faces,
 with 5 notches on
 S. and 1 notch on
 N. edges, and raise
 a mound of stone
 $2\frac{1}{2}$ ft. base, $1\frac{1}{2}$ ft.
 high E. of cor.

It is impracticable
 I destroy old mound
 of stone on the West
 80.00 Set a malpais

Corrective resurvey of E. bdy.
chs.

stone $22 \times 10 \times 8$ ins.,
16 ins. in the ground,
for cor. of secs. 1 and 12,
marked 12 S. S. 1 on
N. W., and 26 E. S. 12
on S. W. faces; and
raise a mound of
stone $2\frac{1}{2}$ ft. base,
 $1\frac{1}{2}$ ft. high, W. of cor.
Pits impracticable
Land rolling and mountainous.
Soil gravelly loam,
3rd rate

No timber, undergrowth
scattering cats claw,
mesquite and Yucca.
Mountainous land + 9 chs

No 5 E, bet. secs. 1 & 6

of T. 12 S. R. 26 E. - Continued

chs.

Over mountainous
land.

- 7.11 Top of ascent, bears
N. E. and S. W.; descend
- 15.11 Foot of descent
- 15.41 Ravine, 10 krs. wide,
course S. W.; ascend
- 19.11 Top of ascent; bears
E. and W.; descend
- 28.11 Ravine, 10 krs. wide, course N. E.
- 35.11 Foot of descent
- 38.41 Reestablish original
1/4 sec. cor. by setting
a malpais stone,
18 x 10 x 4 ins., 12 ins.
in the ground and
mark the same
1/4 S. 6 on E. face,
and raise a mound

Corrective resurvey of E. boundary
chs.

of stone 2½ ft. base,
1½ ft. high, E. of cor.

Pits impracticable
I destroy mound of
stone on the West

40.00 Set a malpais
stone 18 x 12 x 6 ins.,
12 ins. in the ground
for ¼ sec. cor. for sec.
1, marked ¼ S. 1
on W. face, and
raise a mound of
stone 2½ ft. base, 1½
ft. high, W. of cor.
Pits impracticable

42.81 Dig wash 4 lks. wide,
course E.

50.11 Enter dry creek, course
E.

of T. 12 S. R. 26 E. - Concluded

- 52.31 Leave dry creek course E
- 66.11 Dry wash, 60 fms. wide,
course S. E
- 78.11 The cor. of townships
11 and 12 south,
ranges 26 and 27 east,
as heretofore described
Land mountainous ^{or} rolling
Soil stony; 3rd and 4th rate
No timber; undergrowth
Pine. Mountainous
land 36.21 chs.
March 30. 1899

Corrective resurvey of latitudinal
Chs.

I now proceed to
cor. of secs. 25, 26, 35 ²/₃ of 36
as heretofore described
March 31. 1899. At
8^h 10^m a. m., l. m. t.,
I set off $32^{\circ} 21'$ on
the lat. arc, $4^{\circ} 15' N.$,
on the decl. arc, and
determine a true
meridian, with the
solar at the above
mentioned cor.

Thence I run
 $S 89^{\circ} 55' E.$ on a random
line bet. secs. 25 ²/₃ of 36

40.00 set temp. $\frac{1}{4}$ sec. cor.
80.02 Intersect $E.$ bdy
of Tp. at cor. of secs
25 and 36,

section lines in E. tier of S. 12 S. R. 26 E.
Chs.

Thence I run

$N 89^{\circ} 55' W$, on a true
line, bet sees. 25th of 36

Over rolling land

20.00 Enter valley course
North Easterly

20.47 Telegraph line, bears
 $N 74^{\circ} 5' E$ ^{3rd} of $S 74^{\circ} 5' W$

22.82 Middle of abandoned
track of the Southern
Pacific Railroad,
bears $N 74^{\circ} 5' E$ ^{3rd} of $S 74^{\circ} 5' W$

25.10 Western Union telegraph
line, bears $N 74^{\circ} 5' E$ ^{3rd} of $S 74^{\circ} 5' W$

38.00 Road from Wilcox
to Bowie, bears $N. E.$ ^{3rd} of $S. W.$

40.01 Set a limestone
 $18 \times 12 \times 3$ ins., 12 ins
in the ground for

Corrective resurvey of latitudinal
chr.

4 sec. cor., marked
4 on N. face; dig
pits 18x18x12 ins.

E. and W. of stone,
3 ft. dist.; and raise
a mound of earth
3½ ft. base, 1½ ft.
high, N. of cor.

I destroy all evidence
of old cor.

61.22 Dry wash, 10 lbs. wide,
course N.E.

72.00 Ascend

74.00 Top of ascent, bears
N.E. and S.W.

80.02 The cor. of secs.

25, 26, 35 and 36

Land level and rolling
Soil, loam; 1st and 2nd rate

section lines in E. tier of T. 12 S. R. 26 E
Chs.

No timber, under growth
scattering mesquite
and Yucca

From cor. of secs.
23, 24, 25 and 26, as
heretofore described
Run $S 89^{\circ} 55' E$
on a random line,
bet. secs. 24 and 25

40.00 Set temp. $\frac{1}{4}$ sec. cor

80.00 Intersect E. ldy of
Tp. 7 lks S. of cor
of secs. 23 and 26,
as heretofore described

Thence Run
 $N 89^{\circ} 58' W$, on a
true line, bet. secs ^{24 & 25} 23 ^{3/4}

6.50 Dry wash, 50 lks. wide

Corrective resurvey of latitudinal
Chs.

course S. E., and
ascend

37.00 Top of mesa, bears N. 74°

40.00 Set a granite stone

18 x 8 x 6 ins. ^{12 ins.} in the

ground for $\frac{1}{4}$ sec.

cor., marked $\frac{1}{4}$ S

on N. face; dig pits

18 x 18 x 12 ins., E. and W.

of stone, 3 ft. dist;

and raise a mound

of earth 3 $\frac{1}{2}$ ft. base,

1 $\frac{1}{2}$ ft. high, N. of cor.

Destroy all evidence

of old cor.

80.00 The cor. of secs. 23,

24 25 and 26

Land level and rolling

Soil, gravelly loam;

of E. tier
section lines of T. 12 S. R. 26 E
chs.

3rd rate

No timber, undergrowth
cats claw, mesquite
and jano along
wash.

From cor. of secs
13, 14, 23 and 24,
as heretofore described
I run

S 90° 58' E., on a
random line, bet.
secs. 13 and 24

40.00 Set temp. $\frac{1}{4}$ sec. cor.
79.96 Intersect E. l. d. by
8 lks. S of cor. of
secs. 13 and 24,
as heretofore described
Thence I run

Corrective resurvey of latitudinal
Chs.

S $09^{\circ}59'$ W., on a
true line, bet. secs.
13 and 24

Over rolling land
30.00 Descend.

39.98 Foot of descent, bears
N.W. and S.E., and set
a malpais stone
15 x 6 x 6 ins., 10 ins.,
in the ground for
 $\frac{1}{4}$ sec. cor., marked
 $\frac{1}{4}$ on N. face; dig
pits 18 x 18 x 12 ins.,
E and W. of stone,
3 ft. dist.; and raise
a mound of earth
3 $\frac{1}{2}$ ft. base, 1 $\frac{1}{2}$ ft.
high, N. of cor.; To
destroy all evidence

section lines in E. tier of T. 12 S. R. 26 E
Chs.

of old cor.; ascend
41.00 Top of ascent,
bears N.W. and S.E.

79.96 The cor. of secs.

13, 14, 23 and 24

Land, rolling

Soil gravelly loam;
2nd rate.

No timber; undergrowth
scattering mesquite,
catsclaw and yucca

From cor. of secs.

11, 12, 13 and 14, as
heretofore described.

I run

N 89° 59' E, on a
random line, bet.
secs. 12 and 13

Corrective resurvey of latitudinal
chs.

40.00 Set temp. $\frac{1}{4}$ sec. cor.

80.06 Intersect E. bdy.
of Tp. 12 lks. S of cor.
of secs. 12 and of 13,
as heretofore described

Thence I run

$S 89^{\circ} 54' W$, on a true
line, bet. secs. 12nd & 13

Over rolling land.

40.03 Set a malpais
stone, $18 \times 9 \times 8$ ins., 12
ins., in the ground
for $\frac{1}{4}$ sec. cor., marked
 $\frac{1}{4}$ on N. face; dig pits
 $18 \times 18 \times 12$ ins., E. and W.
of stone, 3 ft. dist;
and raise a mound
of earth $3\frac{1}{2}$ ft. base,
 $1\frac{1}{2}$ ft. high, N. of cor.
& destroy all evidence of
old cor.

section lines in E. tier of T. 12 S. R. 26 E

Chs.

62.40 Dry wash 20 lks. wide,
course S. E.

80.06 The cor. of secs. 11, 12, 13 ^{9th}/₁₄

Land rolling

Soil gravelly loam,
3rd rate.

No timber.

From cor. of secs.
1, 12, 11 and 12, as
heretofore described
Run N 89° 54' E, on
a random line bet.
secs. 1 and 12

40.00 Set temp. 4 sec. cor.

80.04 Intersect E. bdy. of
Tp. 20 lks. N. of cor. of
secs. 7 and 12, as
heretofore described

Corrective resurvey of latitudinal
Chs.

- Thence I run
 $N89^{\circ}57'$ W on a true
 line, bet. secs. 1 ^{and} 12
 Ascending
- 10.00 Top of ascent, bears
 N.E. and S.W.; descend
- 13.00 Foot of descent;
 ascend
- 20.00 Top of ascent, bears
 N.E. and S.W.
- 34.00 Descend
- 40.02 Set a malpais
 stone $19 \times 12 \times 5$ ins.,
 12 ins. in the ground
 for $\frac{1}{4}$ sec. cor. marked
 $\frac{1}{4}$ on N. face; dig pits
 $18 \times 18 \times 12$ ins. E. and W.
 of stone 3 ft. dist.;
 and raise a mound

section lines in E. tier of T. 12 S. R. 26 E

Chs.

of earth $3\frac{1}{2}$ ft. base

$1\frac{1}{2}$ ft. high N. of cor.

^{2d} Destroy all evidence of old cor.

47.95 Dry wash, 10 Ws. wide,
course S. W

50.50 Foot of descent,
gully 10 Ws. wide,
course S. S. W; thence
S. E., and ascend

56.00 Top of ascent,
bears N. W. and S. E
and descend

70.00 Enter valley, course
S. E.

79.00 Leave valley, course S. E

80.04 The cor. of secs. 1, 2, 11 $\frac{3}{4}$

Land rolling ^{3d} mountainous

Soil, gravelly, 3^d rate
No timber.

Mountainous land, 50 chs.

Note: I remeasured
line bet. secs. 18 ^{and 19}
and I found the same
to be 76.75 chs. as
heretofore reported
by me.

Philip Contzen
U. S. Deputy Surveyor

List of Names.

BOOK

41

794

A List of the Names of the Individuals
employed by *Philip Cortzen*

U. S. Deputy Surveyor, to assist in running, meas-
uring and marking the lines and corners described
in the foregoing Field Notes of the survey of the

*East boundary and
the latitudinal section
lines in E. tier of
T. 12 S. R. 26 E.*

of the Gila and Salt River Base and Meridian, in
the Territory of Arizona, showing the respective
capacities in which they acted.

W. W. Miller Chainman *2nd Axeman*

..... Chainman.

..... Chainman.

..... Chainman.

..... Axeman.

..... Axeman.

..... Flagman.



40
BOOK 794
Final Oath of Assistants.

We hereby certify that we assisted *Philip
Coutzen* U. S. Deputy Surveyor, in
re-surveying all those parts or portions of the *the*
East boundary and of
the latitudinal section
lines of E. tier of
T. 12 N. R. 26 E

of the Gila and Salt River Base and Meridian, in
the Territory of Arizona, as are represented in the
foregoing field notes as having been surveyed by him
and under his direction; and that said Survey has
been in all respects, to the best of our knowledge
and belief, well and faithfully surveyed, and the
corner monuments established according to the
instructions furnished by the United States Surveyor
General for Arizona.

W. W. Miller

Chainman *W. W. Miller*

Chainman.

Chainman.

Chainman.

Axeman.

Axeman.

Flagman.

Sworn to and subscribed before me, this *4th*

day of *April*, 189*9*

William G. Pault
Notary Public.

[SEAL.]

My Commission expires Aug 15th 1902

Final Oath of U. S. Deputy Surveyor. 43

I, Philip Contzen

U. S. Deputy Surveyor, do solemnly swear that in pursuance of ~~a contract~~ ^{a letter} received from ~~Royal A. Christ Johnson~~ ^{George}, United States Surveyor-General for Arizona,

bearing date of the 10th day of

March 1899, I have well, faithfully, and truly, in my own proper person, and in strict conformity with the instructions furnished by the United States Surveyor-General for Arizona, the Manual of Surveying Instructions, and the laws of the United States, ^{re-} surveyed all those parts

or portions of the East boundary

and the latitudinal section

lines of E. tier of

T. 12 S. R. 26 E

of the Gila and Salt River Base and Meridian, in the Territory of Arizona, as are represented in the foregoing Field Notes as having been ^{re} surveyed by me and under my direction; and I do further solemnly swear that all the corners of said surveys have been established and perpetuated ^{re} in strict accordance with the Manual of printed instructions, the special instructions of the United States Surveyor-General for Arizona, and in the specific

manner described in the field notes, and that the foregoing are the true Field Notes of such survey; and should any fraud be detected I will suffer the penalty of perjury, under the provisions of an act of Congress approved August 8, 1846.

Philip Coutzen
U. S. Deputy Surveyor.

Sworn to and subscribed before me this *13th*

day of *April*, 18*99*

George Christ

BOOK 794

U. S. Surveyor General

U.S. Surveyor General's Office.

Tucson, Arizona, April 25, 1899

The foregoing field notes of the ~~survey of~~
~~corrective survey~~ of the East boundary
 of the latitudinal section lines
 of the East tier of sections, and of
 the remeasurement of section line
 between sec. 18 and 19, Tp. 12 S. R. 26 E.

the Gila and Salt River Base and Merid-
 ian, Arizona, executed by Philip Contzer

D. S., under his contract of the
 4th day of June 1897, having been critic-
 ally examined and the necessary corrections
 and explanations made, the said Field Notes
 and the surveys they describe, are hereby
 approved.

George Christ

U. S. Surveyor General.