

891

See notes of Conra. Grant "for clearing lines" & ranges of this Township.

Indexed

4

No. 891

BOOK 891

# Field Notes

OF THE SURVEY OF THE

*SUBDIVISION LINES*

-OF- BOOK 891

Township 19 S. Range 13 E.

*Gila and Salt River Base and Meridian.*

ARIZONA.

No. 891

By Lewis Wolfley D. S.

under contract dated April 11 1885.

Survey commenced May 23<sup>rd</sup> 1885.

Survey completed May 26<sup>th</sup> 1885.

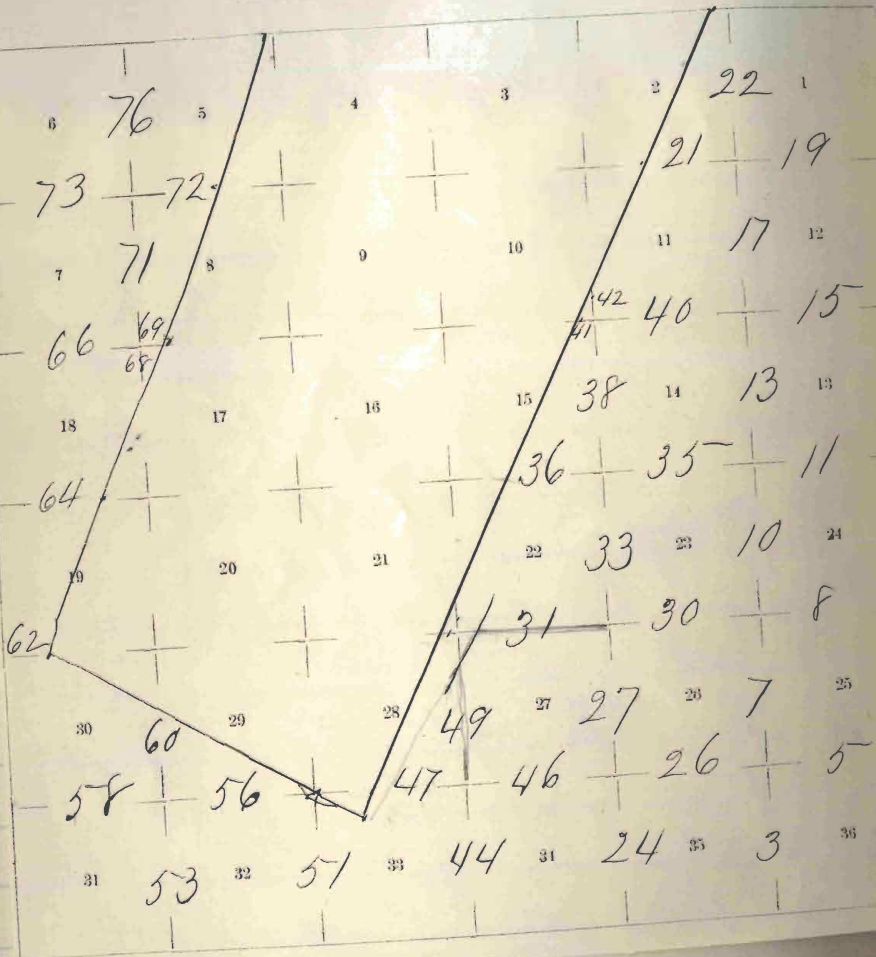
# INDEX.

**BOOK 891**

Township

19 South, Range 13 East,

Gila and Salt River Meridian.



*For preliminary oaths and description of instrument see book No 1.*

T19 S. R 13 E

No. 891

Chains

Beginning at the cor. to  
Secs. 1, 2, 35 & 36. on S. bdy. of  
T19 S. R 13 East. which  
is a granite stone 16x8  
ins. above the ground  
marked with 5 notches on  
W. and 1 notch on E. edge  
and a mound of stone  
alongside. I run North  
bet. Secs. 35 & 36.

$\alpha 12^{\circ} 9' E.$

Over rolling ground  
14.00 Cross Dry Wash course  
40.00 Set a granite stone 16x12x  
ins. 11 ins. in the ground  
for 1/4 Sec. cor. marked 1/4 on  
W. face, and raised a mound  
of stone alongside.

T19 S. R13E.

Charris  
56.00

cross Dry Wash Course  
N.W.

20.00

Set a Granite stone 16x12  
x10 ins. 11 ins. in the  
ground for cor. to Secs.  
25. 26. 35 & 36. marked with  
1 notch on S. and 1 notch  
on E. edges, and raised a  
a mound of stone along  
side.

Surface level

Soil 4<sup>th</sup> rate

Grass fair

Scattering Mesquite and

Palo verde brush.

---

T 19 S. R 13 E.

Chains

East on a random line  
bet. Secs. 25 + 36.

∠ 12° 9' E.

40.00  
79.95

Set temporary 1/4 Sec. cor.  
Intersect the E. bdy. of T<sub>19</sub>  
25 links N. of cor. to Secs.  
25, 30, 31 + 36. which is a  
Quartz stone in place 30x30 in  
above the ground marked  
with a cross (+) at exact  
cor. point, with 1 notch on  
S. and 5 notches on N. edges  
and a mound of stone  
alongside.

Thence I run  
N 89° 49' W. on a true line  
bet. Secs. 25 + 36 with same ∠

39.97

Set a Granite stone 15x10x6 in's

T19 S. R 13 E.

Chains

10 ins. in the ground  
for  $\frac{1}{4}$  Sec. cor. marked  
 $\frac{1}{4}$  on N. face, and raised  
a mound of stone along-  
side from which,

A Mesquite tree 8 ins. in  
diameter bears S45°E. 65 links  
dist marked  $\frac{1}{4}$  S. B. T.

44.95<sup>-</sup> Cross Dry Wash course  
N.W. and ascend  
gradually.

79.95<sup>-</sup> The cor. to Secs. 25, 26, 35 & 36.  
Surface level  
Soil 4<sup>th</sup> rate  
Grass fair  
Scattering brush

---

T19 S, R13E,

Charris

North bet. Secs. 25 & 26,  
Q12°6'E.

- 21.00 Cross Dry Wash course N.
- 40.00 Set a Granite stone 18x15  
x 8 ins., 12 ins., in the  
ground for "4 Sec. cor.  
marked "4 on W. face, and  
raised a mound of stone  
along side.
- 47.00 Cross Dry Wash course N.  
150 links wide
- 49.00 Cross road bears E & N.
- 80.00 Set a Granite stone 18x10x8  
ins., 12 ins., in the ground  
for cor. to Secs. 23, 24, 25 & 26  
marked with 2 notches  
on S. and 1 notch on E. edge  
and raised a mound of

BOOK 351  
T19 S. R13E,

chains

stone alongside,  
Surface level  
Soil 4<sup>th</sup> rate  
Grass poor  
Scattering brush

---

East on a random  
line bet. Secs. 24 & 25;  
W  $12^{\circ} 9' E$ .

40.00 Set temporary  $\frac{1}{4}$  Sec. cor  
20.00 Intersect the E. bdy. of  
T<sub>19</sub> R<sub>13</sub> N. of Cor. to  
Secs. 19, 24, 25 & 30, which  
is a granite stone 18x10  
ins. above the ground  
marked with 2 notches  
on S. and 4 notches on



T 19 S, R 13 E.

Chains

N. edges and a mound of stone alongside.

Thence Iron

at 89° 56' W. on a true line bet. Secs. 24 & 25, with some

40,00

Set a Granite stone 14x10x8 ins. 8 ins. in the ground for 1/4 Sec. cor. marked 1/4 on N. face, and raised a mound of stone alongside.

80,00

The cor. to Secs. 23, 24, 25 & 26.

Surface level

Soil 4<sup>th</sup> rate

Grass poor

Scattering brush

T19 S. R 13E.

Chamie

North bet. Secs. 23 + 24,  
T4 1209'E.

6.50

cross old road bears E & W.

10.00

Set a Granite rock 2 ft x 2 ft x 18 ins. 18 ins. in the ground for  $\frac{1}{4}$  Sec. cor. marked  $\frac{1}{4}$  on N. face, dug pits 18 x 18 x 12 ins. N & S. of stone 5  $\frac{1}{2}$  ft. dist, and raised a mound of earth  $1\frac{1}{2}$  ft. high 3  $\frac{1}{2}$  ft. base alongside.

3.75

cross Dry Wash course N.

10.00

Set a Quartz stone 20 x 10 x 8 ins. 13 ins. in the ground for cor. to Secs. 13, 14, 23 + 24, marked with 3 notches on S and 1 notch on E. edges, and

T 19 S, R 13 E.

Chanis

raised a mound of stone  
alongside.

Surface level

Soil 4<sup>th</sup> rate

Grass poor

No brush

East on a random line bet.  
Secs. 13 & 24,

$\text{Va } 12^{\circ} 9' \text{ E.}$

40.00

Set temporary  $\frac{1}{4}$  Sec. cor.

79.25

Intersect the E. bdy. of T<sub>19</sub>  
10 links S. of cor. to Secs. 13,  
18, 19 & 24, which is a Granite  
stone 16 x 12 ins. above the  
ground marked with 3  
notches on N & S. and a

T19 S, R13 E.

chains

mound of stone along-  
side, from which

A Palo Verde tree 8 ins. in  
diam bears S 30° E. 90 links  
dist. marked T19 S, R14 E,  
S19, B, T,

A Mesquite tree 10 ins. in  
diam bears N 35° W. 225  
links dist. marked T19 S,  
R13 E, S13, B, T,

Thence I run

S 89° 56' W. on a true line  
bet. Secs. 13 + 24 with same Va.

19.25 Cross Dry Wash courses W.

39.62 Set a Granite stone 18 x 10 x 8  
ins. 12 ins. in the ground  
for 1/4 Sec. cor. marked 1/4 on  
N. face, and raised a

T19 S. R 13 E.

Chains

40.75 mound of stone alongside  
cross Dry Wash course T.P.

44.25 cross " " " "

47.25

79.25 The cor. to Secs. 13, 14, 23 + 24

Surface rolling + level.

Soil 4<sup>th</sup> rate

Grass fair

Scattering brush

North bet. Secs 13 + 14.

Qd 12° 9' E.

35.50 cross Dry Wash course T.P.

40.00

Set a Granite stone 14x10x8  
ins. 9 ins. in the ground  
for 14 Sec. cor. marked 14 on  
N.W. face, and raised a mound

T19 S, R13E.

Chains!

80.00 of stone alongside.  
 Set a granite stone  $14 \times 10 \times 8$  ins., 9 ins. in the ground for cor. to Secs. 11, 12, 13 & 14. marked with 4 notches on S. and 1 notch on E. edges, dug pits  $18 \times 18 \times 12$  ins. in each Sec.  $5\frac{1}{2}$  ft. dish and raised a mound of earth 2 ft. high  $4\frac{1}{2}$  ft. base alongside, from which a Mesquite tree 8 ins. in diam bears  $N 30^{\circ} E. 75$  links. dish marked.  
 T19 S, R13E. S12 B, T.  
 Surface level  
 Soil 4<sup>th</sup> rate

T19 S. R 13 E.

Chamis

Grass floor  
Scattering brush

---

East on a random line  
bet. Secs. 12 + 13,

$\text{Va } 12^{\circ} 9' \text{ E.}$

- 40.00 Set temporary 1/4 Sec. cor.  
80.15 Intersect the E. bdy. of T<sub>19</sub>  
18 links S of cor. to Secs. 12, 13  
+ 18, which is a Quartz stone  
14 x 14 ins. above the ground  
marked with 4 notches on  
S. and 2 notches on N. edges,  
and a mound of stone  
alongside, from which  
A Palo Verde tree 6 ins. in  
diam bears  $\text{N } 28^{\circ} \text{ W. } 80$  links

T19 S. R 13 E.

harris

dist. marked T19 S R 13 E.  
S 12, B.T.

Thence I run

S  $89^{\circ} 52'$  W. on a true line  
bet. Secs 12 & 13. with Sanna.

97.15

Cross Dry Wash course N.W.

10.07

Set a Granite stone  $19 \times 12 \times 7$   
ins 13 ins. in the ground

for  $\frac{1}{4}$  Sec. Cor. marked  $\frac{1}{4}$   
on N. face, dug pits  $18 \times 18$   
 $\times 12$  ins E & W. of stone  $5\frac{1}{2}$

ft. dist. and raised a  
mound of earth  $1\frac{1}{2}$  ft.  
high  $3\frac{1}{2}$  ft. base alongside.

61.15

Cross Dry Wash course  
N.W. and over rolling  
ground

80.15

The cor. to Secs. 11, 12, 13 & 14.



T 19 S, R 13 E.

Chains

Surface level  
Soil 4<sup>th</sup> rate  
Grass poor  
Scattering brush

---

North bet. Secs 11 & 12  
Qa 12° 9' E.

- 9.00 Cross Dry Wash course N. W.  
14.50 " " " " "  
40.00 Set a granite stone 16x8x8  
ins. 9 ins. in the ground for  
1/4 Sec. cor. marked 1/4 on W  
face, dug pits 18x18x12 ins.  
N + S. end of stone 5 1/2 ft.  
dist. and raised a mound  
of earth 1 1/2 ft. high 4 1/2 ft. base  
alongside.

T19 S. R. 13E.

Charris

43.00

cross Dry Wash course N. W.

58.00

" " " " "

76.00

" " " " West.

80.00

Set a Granite stone  $12 \times 12 \times 4$  ins. 7 ins. in the ground for Cor. to Secs. 1, 2, 11 & 12. marked with 5 notches on S. and 1 notch on E. edges. and raised a mound of stone alongside. from which,

A Mesquite tree 10 ins. in diam. bears  $N 41^{\circ} W$ , 90 links dist. marked.

T19 S. R. 13E. S2. B. T.

Surface level

Soil 4<sup>th</sup> rate

Grass poor

T 19 S, R 13 E,

Chains

Scattering brush

East on a random line  
bet. Secs 1 & 12,

Va  $12^{\circ} 9' E$ .

- 40.00 Set temporary 14 Sec. cor.  
79.95 Intersect the E. bdy. of Tpi at  
cor. to Secs. 1, 6, 7 & 12, which  
is a Quartz stone  $20 \times 12$  ins.  
above the ground marked  
with 1 notch on N + 5 notches  
on S. edges, and a mound  
of stone alongside.  
Thence Run  
West. on a true line bet. Secs.  
1 & 12 with same Va.  
39.97 Deposited a marked stone

T19 S, R13 E.

Harris

to Secs 2 + 11, marked C.C.  
(Canoe Claim) and raised  
a mound of stone 8  
links E. of cor.

Surface level

Soil  $\frac{1}{4}$  rate

No grass

Scattered Mesquite brush

North on a random  
line bet. Secs. 1 + 2,

W 120° 9' E.

40,00

74,90

Set temporary  $\frac{1}{4}$  Sec. cor.  
Intersect the E. bay of  
Tr 25 links E. of cor. to  
Secs 1, 2, 35 + 36, which is  
a Post properly marked

D 19 S. R 13 E.

chains

and notched and futs of required size, from which  
A Mesquite tree 8 ins. in diam. bears S 62<sup>3</sup>/<sub>4</sub>° E. 73 links dist.

Thence I run

S 0° 11' E. on a true line bet. Secs. 1 & 2, with same Va.

34.90

Deposited a marked stone 12 ins. in the ground for 1/4 Sec. cor, dug futs 18<sup>1</sup>/<sub>2</sub> x 12 ins. N of S. of stone 5<sup>1</sup>/<sub>2</sub> ft. dist. and raised a mound of earth 1<sup>1</sup>/<sub>2</sub> ft. high 3<sup>1</sup>/<sub>2</sub> ft. base over it. In N. fut drove a stake 2 ft. long 2 ins. sq. 12 ins. in the ground marked 1/4 S. on W. face.

27  
BOOK 891  
T19 S. R13E.

Chains

38.90 Cross Dry Wash course W.

66.90 Cross old road bears E to W.

70.90 Cross Dry Wash course W.

74.90 The cor. to Secs. 1, 2, 11 & 12.

Surface level

Soil 4<sup>th</sup> rate

Grass floor

Scattering brush

---

From the cor. to Secs.  
2, 3, 34 & 35 on S. bdy. of T19 S.  
R13E. which is a Granite  
stone 22x8 ins. above the  
ground marked with 4  
notches on W. and 2 notches  
on E. edges, and a mound  
of stone alongside.

579 S. R 13 E.

Chambers Osc rolling ground.  
Iron North bet. Secs.  
34 & 35.

W 12° 48' E.

- 17.00 Cross Dry Wash course N. 1/4  
46.00 Set a Granite stone 12 x 12 x 10  
ins, 8 ins. in the ground  
for 1/4 Sec. cor. marked 1/4 on  
W. face, and raised a  
mound of stone alongside  
46.00 Cross Dry Wash course N. 1/4  
57.00 " " " " "  
80.00 Set a Granite stone 16 x 12 x 4  
ins, 11 ins. in the ground  
for cor. to Secs 26, 27, 34 & 35  
marked with 1 notch on  
S. and 2 notches on E. edge  
and raised a mound  
of stone alongside.

Chains

Surface level

Soil 3 $\frac{1}{4}$  rate

Grass floor

Scattering Mesquite brush

East on a random  
line bet. Secs 26 + 35;  
Wa 12° 9' E.

40.00

80.15

Set temporary 44 Sec. cor.  
Intersect the N + S. line  
25 links N. of cor. to  
Secs 25, 26, 35 + 36.

Thence I run  
N 89° 49' W. on a true  
line bet. Secs. 26 + 35 with  
same Wa.

38.65

Cross Dry Wash course N. W.



chains

40.07 Set a Granite stone 17x10x8  
 ins. 12 ins. in the ground  
 for  $\frac{1}{4}$  Sec. cor. marked  $\frac{1}{4}$   
 on N. face. and raised a  
 mound of stone along side

41.65 Cross Dry Wash course N.W.  
 and ascend gradually

80.15 The cor. to Secs. 26, 27, 34 + 35

Surface level

Soil 4<sup>th</sup> rate

Grass fair

Scattering Mesquite brush

---

North bet. Secs. 26 + 27.

Nd  $12^{\circ} 9' E$ .

Over level ground

7.00 Cross Dry Wash course V.

## Chains

28.50

Cross Dry Wash course W.

40.00

Deposited a marked stone 12 ins. in the ground for  $\frac{1}{4}$  Sec. Cor. dug pits  $18 \times 18 \times 12$  ins. N & S of stone  $5\frac{1}{2}$  ft. dist. and raised a mound of earth  $1\frac{1}{2}$  ft. high  $3\frac{1}{2}$  ft. base over it. In N. pit drove a stake 2 ft. long 2 ins. square. 12 ins. in the ground marked  $\frac{1}{4}$  S. on W. face.

47.25

Cross road bears E &amp; W.

64.50

Cross Dry Wash course W.  
1 chain wide.

80.00

Set a Granite stone  $18 \times 12 \times 8$  ins. 11 ins. in the ground for cor. to Secs. 22, 23, 26 & 27.

T19 S, R13E.

29

Chamis

marked with 2 notches on S.  
and E. edges, and raised a  
mound of stone alongside,  
from which,

A Mesquite tree 7 ins. in  
diam. bears S 2° W. 90 links  
dist. marked T19 S, R13E, S27, B.

A Mesquite tree 10 ins. in  
diam. bears N 28° W. 125 links. dis  
marked T19 S, R13E, S22, B.

Surface level

Soil 4<sup>th</sup> rate

Grass poor

Scattering brush

---

Chains

East on a random line  
bet. Secs. 23 + 26.

$Vd' 12^{\circ} 9' E.$

40.00

Set temporary  $\frac{1}{4}$  Sec. cor.

80.10

Intersect the N. S. line 18 links  
S. of cor. to Secs. 23, 24, 25 + 26.

Thence I run

$S 89^{\circ} 52' W.$  on a true line bet.  
Secs. 23 + 26. with same  $Vd.$   
and descend over rolling  
ground.

40.05

Set a Granite stone  $14 \times 13 \times$   
 $8$  ins.  $9$  ins. in the ground  
for  $\frac{1}{4}$  Sec. cor. marked  $\frac{1}{4}$   
on N. face, and raised  
a mound of stone along  
side.

57.10

cross Dry Wash course N. W.

T19 S. R13E.

31

Cham's

80.10 The cor. to Secs. 22, 23, 26 + 27.  
Surface level  
Soil 4<sup>th</sup> rate  
Grass poor  
Scattering brush

---

West on a true line bet.  
Secs. 22 + 27,

Var. 2° E.

Over level ground  
40.00 Set a Post 3 ft. long 3 ins.  
sq. with marked stone 12  
ins. in the ground for  $\frac{1}{4}$   
Sec. cor. marked  $\frac{1}{4}$  Sect. face  
dug pits 18 x 18 x 12 ins. E & W. of  
Post 5  $\frac{1}{2}$  ft. dia. and raised  
a mound of earth  $1\frac{1}{2}$  ft.

Chains

high 3  $\frac{1}{2}$  ft. base around post.

68.50

Cross Dry Wash course 4. W.

71.00

Cross Dry Wash course 4. W.

73.32

Intersect the East bdy. of the San Ignacio de <sup>La</sup> Canoa Private Land Claim, at a point 116.73 chains  $N22^{\circ}56'E$  of the S.E. Cor. of the claim.

Set a Granite stone 15x12x11 ins. 9 ins. in the ground at the point of intersection, <sup>for closing cor</sup> to Secs. 22 & 27 marked C.C. (Canoa claim) and raised a mound of stone 8 links East. of Cor.

Charris

Surface level  
 Soil 4<sup>th</sup> rate  
 Grass poor

North bet. Secs. 22 & 23,  
 $\text{N } 12^{\circ} 15' \text{ E.}$

Over rolling ground

- 18.00 Cross Dry Wash course N
- 40.00 Set a Granite stone 12 x 10 x 10 in  
 7 ins. in the ground for  $\frac{1}{4}$ .  
 Sec. Cor. marked  $\frac{1}{4}$  on N.  
 face, dug pits 18 x 18 x 12 ins. N  
 S. of stone 5  $\frac{1}{2}$  ft. dist. and  
 raised a mound of earth  $\frac{1}{2}$  ft.  
 high 3  $\frac{1}{2}$  ft. base alongside,  
 from which  
 A Mesquite tree 8 ins. in diam

T/9 S. R 13 E

Chamie

bears N 45° E. 15 links dist.  
marked "4 S. B. T.

A Mesquite tree 8 ins. in diam.  
bears N 25° W. 30 links. dist.  
marked "4 S. B. T.

50.00 Cross Dry Wash course  
West and lean timber

73.00 Cross old road bears E & W.

80.00 Set a Granite stone 14 x 8 x 6  
ins. 9 ins. in the ground  
for cor. to Secs. 14, 15, 22 & 23,  
marked with 3 notches  
on S. and 2 notches on  
E. edges, and raised a  
mound of stone alongside.  
Surface level  
Soil 4<sup>th</sup> rate  
Grass poor



T19 S. R13E.

Chain

Dense mesquite trees 50 ch  
Bulbous trees 30 "

---

East on a random line  
bet. Secs. 14 & 23,

$\text{Q} \text{ } 12^{\circ} \text{E.}$

40.00 Set temporary  $\frac{1}{4}$  Sec. Cor.  
79.85 Intersect the N & S. line 25  
links S. of Cor. to Secs. 13, 14, 23  
& 24.

Thence I run

$\text{S} 89^{\circ} 49' \text{W.}$  on a true line  
bet. Secs. 14 & 23, with same va.

39.92 Set a granite stone  $14 \times 10 \times 8$   
ins. 9 ins. in the ground  
for  $\frac{1}{4}$  Sec. Cor. marked  $\frac{1}{4}$  on  
N. face, dug pits  $18 \times 18 \times 12$  ins.

T 19 S. R 13 E.

Charris

E & W. of stone  $5\frac{1}{2}$  ft. dist,  
and raised a mound  
of earth  $1\frac{1}{2}$  ft. high  $3\frac{1}{2}$   
ft. base alongside.

62.85

Cross road bears N.W. & S.E.

79.85

The cor. to Secs. 14, 15, 22 & 23.

Surface level

Soil 4<sup>th</sup> rate

Grass poor

Scattering Mesquite brush

---

West on a true line  
bet. Secs. 15 & 22.

N 12° E.

Descend gradually  
alongside of Dry Wash  
Intersect the E. boundary of

39.47

T19 S. R 13 E

Claims

the San Ignacio de <sup>la</sup> Canoa  
Private Land Claim at a  
front 203.58 chs, N 22° 56'.  
of the S.E. cor. of the claim  
Deposited a marked  
stone 12 ins. in the ground  
at the <sup>point of</sup> intersection <sup>for closing cor.</sup> to Secs 15 & 22  
dug a pit 18x18x12 ins. 8  
links E of cor. and raised  
a mound of earth 2 ft.  
high 4½ ft. base over it. In  
pit drove a stake 2 ft. long  
2 ins. sq. 12 ins. in the  
ground, marked C.C.  
(Canoa Claim) in the West.  
T19 S. R 13 E. on East. S 15 on  
N. and S. 22 on S. faces.  
Surface level

T 79 S. R 13 E.

Chairs

Grass floor  
Soil floor

---

North bet. Secs. 14 & 15.  
Qva 12° E.

Over level ground

17.50

cross old road bears E & W.

25.00

cross Dry Wash course N.W.

40.00

Set a Granite stone 16x11

x7 ins. 11 ins. in the  
ground for "4 Sec. cor.

marked "4 on W. face

and raised a mound  
of stone alongside.

41.50

cross Dry Wash course W.

75.00

" " " " N.W.

Chamis

- 78.00 Cross old road bears N. E & S. W.
- 80.00 Set a granite stone 12x10x8  
ins. 7 ins. in the ground for  
cor. to Secs. 10, 11, 14 & 15, marked  
with 4 notches on S. and  
2 notches on E. edges, and  
raised a mound of stone  
alongside. from which,  
A Mesquite tree 10 ins. in diam  
bears S 43° W. 85 links dist.  
marked T 19 S, R 13 E, S. 15, B, T,  
Surface level  
Soil 4<sup>th</sup> rate  
Grass poor  
Scattering Mesquite brush

T 19 S. R 13 E.

chain

East on a random  
line bet. Secs. 11 + 14,  
Va  $12^{\circ} 9' E$ .

40.00

Set temporary  $\frac{1}{4}$  Sec. cor.

80.00

Intersect the E + S. line  
at cor. to Secs. 11, 12, 13 + 14.

Thence I run

West, on a true line bet.  
Secs. 11 + 14 with same Va.

11.50

Cross Dry Wash course N.W.

15.50

" " " " "

5.00

Cross old road bears N.E.  
S.W.

40.00

Set a Black rock  $12 \times 8 \times 6$   
ins. 7 ins. in the ground  
for  $\frac{1}{4}$  Sec. cor. marked  
 $\frac{1}{4}$  on N. face, and raised  
a mound of stone along

T 19 S, R 13 E.

basis

side.

0.00

The cor. to Secs. 11, 12, 13 & 14.

Surface level.

Soil 4<sup>th</sup> rate

Grass floor

Scattering Mesquite brush

---

West on a true line bet.  
Secs. 10 & 15

$\text{N} 12^{\circ} \text{E}$ .

5.62

Intersect the East. bdy. of  
the San Ignacio de <sup>la</sup> Canoas  
private Land Claim, at a  
point 290.45 chs.  $\text{N} 22^{\circ} 56' \text{E}$ .  
of the S.E. cor. of the claim

Set a Granite stone  $12 \times 8 \times$   
6 ins. 7 ins in the ground

T19 S. R 13E,

chain

at the point of intersection <sup>from closing cor.</sup> to Secs 10 & 15 marked  
C. C. (Canoa Claim) and  
raised a mound of  
stone 8 links E. of cor.

Surface level

Soil 4<sup>th</sup> rate

No grass.

Scattering mesquite brush

---

North on a true line  
bet. Secs. 10 & 11,

N 12° E.

2.50

cross Dry Wash course W  
and road in Wash bears  
N. E + S. W.

3.30

Intersect the East bdy. of



T 19 S, R 13 E,

43 10

Chamis

the San Ignacio de <sup>La</sup> Canoa  
Private Land claim at a point  
304.88 chs. N 22° 56' E. of the  
S. E. cor. of the claim.

Deposited a marked  
stone 12 ins. in the ground  
at the point of intersection  
D<sup>to</sup> ~~Secs~~ <sup>for closing</sup> Secs 10 & 11. Dug pit 18 x 18  
x 12 ins. 8 links E. of cor.  
and raised a mound of  
earth 2 ft. high 4 1/2 ft. base  
over it. In pit drove a stake  
2 ft. long 2 ins. sq. 12 ins.  
in the ground marked  
C. C. (Canoa claim) on the S.  
T 19 S, R 13 E, on North S 11 on  
E. S. 10 on W. faces  
Surface level

T 19 S. R 13 E.

harris

Soil 4<sup>th</sup> rate  
Grass poor.

From the cor. to Secs.  
3, 4, 33 + 34, on South bdy.  
of T 19 S. R 13 E, which  
is a Granite stone 16x10  
ins. above the ground  
marked with 3 notches  
on E + W. edges, and a  
mound of stone alongside.  
From which,

A Palo Verde tree 8 ins.  
in diam. bears S 65° E.

110. Link's dist. marked.

T 20 S. R 13 E. S 3, B, T.

A Mesquite tree 10 ins. in diam.

chain

bears S45° W. 75 links dist.  
 marked T20 S. R13E. S4, B. J.  
 Iron North bet. Secs. 33 + 34.  
 Va 12' E.

Over rolling ground.

10.00 Set a Granite stone 14 x 12 x 8  
 ins. 8 ins. in the ground  
 for 1/4 Sec. cor. marked 1/4 on  
 W. face, and raised a mound  
 of stone alongside.

12.50 Cross Dry Wash course W.

20.00 Set a Granite stone 18 x 12 x 8  
 ins. 12 ins. in the ground  
 for cor. to Secs. 27, 28, 33 + 34.  
 marked with 1 notch on S.  
 and 3 notches on E. edges.  
 and raised a mound of  
 stone alongside. from which

T19 S. R13E.

chains

A Mesquite tree 14 ins. in  
diameter bears  $N 48^{\circ} W, 55$   
links dist. marked T19S,  
R13E. S28. B.T.

Surface rolling  
Soil 4<sup>th</sup> rate  
Grass poor  
Scattering Mesquite trees

---

Cast on a random line  
bet. Secs. 27 + 34,  
 $N 91^{\circ} E$ .

4 0.00 Set temporary 1/4 Sec. cor.  
7 9.90 Intersect the N + S. line  
18 links. N. of cor. to Secs. 26,  
27, 34 + 35,  
Thence from

T19 S. R 13 E.

47

Chamis

N 89° 52' W. on a true line  
bet. Secs. 27 + 34. with same  
Wa.

39.95

Set a granite stone 27x16x12 in  
19 ins. in the ground for  $\frac{1}{4}$  Sec.  
cor. marked "4" on N. face, and raised  
a mound of stone alongside.

49.90

cross Dry Wash course N.W.

66.90

" " " "

79.90

The cor. to Secs. 27, 28, 33 + 34.

Surface rolling

Soil 4<sup>th</sup> rate

Grass floor

Scattering Mesquite trees

West on a true line bet.  
Secs. 28 + 33.

T19 S. R13E.

chains

27.17

W 12' E.

Intersect the East. bdy.  
of the San Ignacio.  
de <sup>la</sup> Llanoa Private Land  
Claim at a point 29.86  
chs. N  $22^{\circ} 56' E$  of the S.E.  
Cor. of claim

Deposited a marked  
stone 12 ins. in the ground  
at the point of intersection  
~~to~~ <sup>for closing cor-</sup> Secs. 28 & 33. Dug a pit  
18 x 18 x 12 ins. 8 links East  
of cor. and raised a  
mound of earth 2 ft.  
high  $4\frac{1}{2}$  ft. base over it.  
In pit drove a stake 2  
ft. long 2 ins. sq. 12  
ins. in the ground

T19 S, R13E

chain's

marked c. c. (Canoa claim)  
on W. T19 S, R13E, on East  
S 28 on N. and S 33 on S. faces.

Surface level

Soil 3<sup>rd</sup> rate

Grass fair

---

North on a true line bet.  
Secs. 27 & 28.

$\theta 12^{\circ} E$ .

37.50

cross Dry wash course N.W.

40.00

Set a Granite stone 12x8x6 ins.

7 ins. in the ground for  $\frac{1}{4}$  Sec.

cor. marked  $\frac{1}{4}$  on W. face, and

raised a mound of stone

alongside.

44.50

cross Dry wash course N.W.

T 19 S. R 13 E

Claims  
4.22

Intersect the East boundary of the San Ignacio de la Canoa Private Land Claim at a point 99.57 chs. N.  $22^{\circ} 56' E$ . of the S.E. cor. of the claim.

Deposited a marked stone 12 ins. in the ground at the point of intersection <sup>for closing cap.</sup> to Dec. 27 & 28. dug a pit 18 x 18 x 12 ins. 8 links E. of cor. and raised a mound of earth 2 ft. high 4 1/2 ft. base over it. In pit drove a stake 2 ft. long 2 ins. sq. 12 ins. in the ground marked C.C. (Canoa claim)



T 19 S. R 13 E.

harris

on the S. T 19 S. R 13 E. on North  
S 27 on E. and S 28 on W. faces.

Surface level

Soil floor

Grass floor

Scattering brush

May 24<sup>th</sup> 1885

From the cor. to Secs. 4, 5,  
32 + 33. on South bdy. of T 19  
S. R 13 E. which is a Granite  
stone 18x18 ins. above the ground  
marked with 2 notches on W.  
and 4 notches on E. edges  
and a mound of stone  
alongside, from which,

T 19 S. R 13 E,

## Chains

A Mesquite tree 10 ins. in diam bears  $S 55^{\circ} W$ . 60 links dist. marked T 20 S. R 13 E. S. 5. B. T.

Iron Nook on a true line bet. Secs. 32 & 33, @  $912^{\circ} E$

40.00

Set a Granite stone  $16 \times 12 \times 12$  ins. 11 ins. in the ground for  $\frac{1}{4}$  Sec. cor. marked  $\frac{1}{4}$  on W. face, and raised a mound of stone along side.

76.93

Intersect the South bay of the San Ignacio de la Canoa Private Land claim at a point 47.90 chs.  $N 59^{\circ} 20' W$ . of the S. E. cor.

Chains

of the claim.

Set a granite stone  $18 \times 16$   
 $\times 12$  ins. in the ground  
 at the point of intersection of  
~~Secs. 32 & 33~~ <sup>Secs. 32 to</sup> 33, marked C. C.  
 (Cawa claim) and raised a  
 mound of stone 8 links S.  
 of cor.

Surface level

Soil  $4 \frac{1}{4}$  rate

No grass

Dense brush

From the cor to Secs. 5, 6,  
 31 & 32, on S. bay. of T19 S.  
 R13 E. which is a post  
 $4$  ins. sq. in mound of ear

T19 S. R13E

ham's

marked T19 S. S32 on N.E.  
R13E. S5 on S.E. T20 S. S6  
on S.W. and S31 on N.W.  
faces with 1 notch on W.  
and 5 notches on E. edges  
and pits of required size.

From North

bet. Sec. 31 + 32,

@ 912° E.

40.00

Deposited a marked stone  
12 ins. in the ground for  
1/4 Sec. cor. dug pits 18 x 18  
x 12 ins. N + S. of stone 5 1/2  
ft. dist. and raised a  
mound of earth 1 1/2 ft. high  
3 1/2 ft. base over it. In N.  
pit. drove a stake 2 ft.  
long 2 ins. sq. 12 ins. in

kains

the ground marked  $1/4$  S. on N. face,

56.00 Cross road bears E + W.

80.00 Set a Post 4 ft. long 4 ins. sq. with marked stone 12 ins. in the ground for cor. to Secs. 29, 30, 31 + 32, marked.

T19 S. S29 on N.E.

R13 E. S32 on S.E.

S31 on S.W. and S30 on N.W.

faces with 1 notch on S. and 5 notches on E edges.

aug pits  $18 \times 18 \times 12$  ins. in each Sec.  $5\frac{1}{2}$  ft. dist. and raised a mound of earth 2 ft. high  $4\frac{1}{2}$  ft. base

around post. from which A mesquite tree 18 ins. in diam

T19 S. R13E.

Chavis

bears S1°E. 10 links. dist.  
marked T19 S. R13E. S. 32. B. T.

Surface level

Soil 1<sup>st</sup>/<sub>11</sub> rate

Grass poor

Dense brush

East on a true line  
bet. Secs. 29 + 32.

N 12° 9' E.

22.00

Cross Santa Cruz river  
course N. and along side of  
fence.

40.00

Deposited a marked stone  
12 ins. in the ground  
for 1/4 Sec. cor, dug pit's  
18x18x12 ins. E & W. of stone

Chamiz

5 1/2 ft. dist. and raised a mound of earth 1 1/2 ft. high 3 1/2 ft. base over it. In E. part, drove a stake 2 ft. long 2 in. sq. 12 ins. in the ground marked "4 S. on N. face.

A house and improvements bears S 44° E. 15 chs. dist. from this point. Cor. is on South side of fence.

49.00 Cross road bears N. E + S. W

74.83 Intersect the South bdy of the San Ignacio de la Canada Private Land Claim at a point 53.91 chs. N 59° 20' W of the S. E. cor. of the claim

Set a Granite stone 18 x 10 x 12 ins. in the ground

T19 S. R. 13 E.

Cham's

at the point of inter-  
<sup>for closing cor</sup>  
 section to Secs. 29 & 32  
 marked C. C. (Canoa claim)  
 and raised a mound of  
 stone & lime S. of cor.  
 surface level  
 Soil  $1 \frac{1}{4}$  rate  
 Dense brush

West on a random line  
 bet. Secs. 30 & 31.

N 12° 9' E.

Set temporary  $\frac{1}{4}$  Sec. cor.  
 Intersect the West ldy.  
 of Tpc 30 lmk's N. of cor. to  
 Secs. 25, 30, 31 & 36. which  
 is a Granite stone

9  
 40.00  
 7.60



T19 S, R13E,

Chain

14x8 ins. above the ground  
marked with 5 notches on  
N. and 1 notch on S. and a  
mound of stone alongside.

Thence I run

N89°47' W. on a true line  
bet. Secs. 30+31 with same Pa.

37.60 Set a Volcanic stone 12x11x9  
ins. 7 ins. in the ground for  
1/4 Sec. cor. marked 1/4 on N.  
face, and raised a mound  
of stone alongside.

48.60 Cross road from Tucson to  
Tubac bears N+S.

79.60 The cor. to Secs. 29, 30, 31+32

Surface level

Soil 4<sup>th</sup> rate

Dense brush

T 19 S. R 13 E.

Chamis

North on a true line  
bet. Secs. 29 & 30.

N  $12^{\circ}$  E.

2.00

Cross road bears N. E + S. W.

5.15

Cross fence bears N. E + S. W.

40.00

Deposited a marked  
stone 12 ins. in the  
ground for  $\frac{1}{4}$  Sec. cor. dug  
pits  $18 \times 18 \times 12$  ins. N + S.  
of cor.  $5\frac{1}{2}$  ft. dist. and  
raised a mound of  
earth  $1\frac{1}{2}$  ft. high  $3\frac{1}{2}$  ft.  
base over it. Inct. pit  
drove a stake 2 ft. long  
2 ins. sq. 12 ins. in the  
ground marked  $\frac{1}{4}$  S. on  
W. face.

44.37

Intersect the <sup>S. line of the</sup> San Ignacio

T19 S. R 13 E.

chains

de la Canoa Private Land  
claim at a point 69.50. chs  
S  $59^{\circ} 20' E$ . of the S. W. cor. of  
the claim

Deposited a marked  
stone 12 ins. in the ground  
at the point of intersection <sup>for Dogleg Cor</sup> to  
Secs 29 & 30. dug pit 18 x 18 x 12 ins  
8 links E. of cor. and raised  
a mound of earth 2 ft. high  
4 1/2 ft. base over it. In pit  
drove a stake 2 ft. long 2 ins.  
sq. 12 ins. in the ground  
marked C. C. Canoa claim  
on the S. T19 S. R 13 E. on N.  
S 29 on E. and S 30 on W. faces

Surface level

Soil  $1 \frac{1}{16}$  rate

T 19 S. R 13 E.

Charris

No Grass  
Dense brush

---

From the cor. to Secs.  
19.24. 25+30. on the West  
bdy. of T<sup>p</sup> 19 S. R 13 E. which  
is a Volcanic stone 16x10  
ins. above the ground  
marked with 4 notches on  
N. and 2 notches on S.  
edges, and a mound of  
stone alongside, from which  
A Mesquite tree 8 ins. in  
diam. bears S 40° E. 30 miles  
dist. marked T 19 S. R 13 E.  
S. 30. B. T.

From East on a

T19 S. R 13 E.

Chambers

true line bet. Secs. 19 & 30.  
N 91° 2' 9" E.

20.00

Intersect the South bdy  
of the San Ignacio de la  
Canoa Private Land claim  
at a point 35 links S 59°  
20' E. of the S.W. cor. of the cl.

Set a Granite Stone 16  
x 8 ins. 11 ins. in the ground  
at the point of intersection  
<sup>for defining cor.</sup>  
to Secs. 19 & 30. Marked C.L.  
(Canoa claim) and raise  
a mound of stone 8 links  
S. of cor.

Surface level  
Soil 4<sup>th</sup> rate  
No grass  
Scattering brush

T19 S. R13 E.

Chains

From the cor. to Secs.  
13, 18, 19 & 24. on West side  
of T<sub>19</sub> S. R 13 E. which is  
a Granite stone 12x10 ins.  
above the ground marked  
with 3 notches on N & S  
edges, and a mound of  
earth and pits of required  
size.

I run East on a true  
line bet. Secs. 18 & 19,  
Wa 12° 9' E.

23.44  
40.00

Cross Dry Wash course E  
Deposited a marked  
stone 12 ins. in the ground  
for  $\frac{1}{4}$  Sec. cor. dug pits  
18x18x12 ins. E & W. of stone

Chains

5½ ft. dist. and raised a mound of earth 1½ ft. high 3½ ft. base over it. In E. pit drove a stake 2 ft. long 2 ins. sq. 12 ins. in the ground marked ¼ S. on N. fac

53.44

Intersect the West bdy. of the San Ignacio de la Canoa Private Land claim <sup>at a point</sup> 6.70 chs N22° 56' E. of the S.W. cor. of the claim.

Set a Granite stone 12x12 x 8 ins. 7 ins. in the ground at the point of intersection <sup>for closing cor</sup> to Secs. 18 & 19 marked C.C. (Canoa claim) and raised a mound of stone & links W. of cor.

T19 S, R13 E.

Cham's

Surface level  
Soil 4<sup>th</sup> rate  
no grass  
Scattering brush

From the cor. to Secs  
7, 12, 13 + 15, on the West  
bdy. of the T19 S, R13 E.  
which is a Granite stone  
20 x 14 ins. above the ground.  
marked with 2 notches  
on N. and 4 notches on S  
edges, and a mound of  
stone alongside from which  
A Mesquite tree 10 ins. in  
diam. bears N 43° E. 135'  
link's dist. marked T19 S.



T19 S, R13 E.

67

Chamie

R13 E. S 7, B, T.

A Mesquite tree 10 ins. in diam.  
bears N45°W. 145. links dist.

marked T19 S, R12 E, S. 12 B, T.

I run East on a true  
line bet. Secs 7 + 18.

W 12° 9' E.

Over rolling ground

40.00

Set a Granite stone 26x18x  
14 ins. 19 ins. in the ground

for 1/4 Sec. cor. marked 1/4 on

N. face, and raised a  
mound of stone alongside

51.00

cross Dry Wash 3 chs.  
wide course S.E.

80.00

Set a Volcanic stone 22x10x  
7 ins. 15 in the ground for  
cor. to Secs. 7, 8, 17 + 18.

T19 S. R13E,

Charris

marked with 4 notches  
on S. and 5 notches on E.  
edges, and raised a  
mound of stone alongside.

Surface level

Soil 4<sup>th</sup> rate

Grass poor

Scattering brush

---

South on a true line  
bet. Secs 17+18.

Wa  $12^{\circ}9'E$ .

13.00

17.24

cross Dry Wash course S.E.  
Intersect the West. ldy. of  
the San Ignacio de la Carra  
Private Land claim at a  
point 134.82, Chs N.  $22^{\circ}56'E$ .

Claim

of the S.W. cor. of the claim  
 Set a Granite stone 18x12  
 x 8 ins. 11 ins. in the ground  
 at the intersection <sup>for closing cor.</sup> to Secs.  
 17 & 18, marked G. T. (Canon  
 claim) and raised a  
 mound of stone 8 links E. of cor.

Surface level

Soil 4<sup>th</sup> rate

No grass

Scattering brush

From the cor. to Secs 7, 8, 17  
 & 18. just established by me  
 I run E. on a true line  
 bet. Secs. 8 & 17.

 $\text{N} 12^{\circ} 9' \text{E}$

T19 S. R13 E.

Chains

7.29

Intersect the West bdy,  
of the San Ignacio de la  
Canaoa Private Land  
claim at a point 173.56  
chains  $N22^{\circ}56'E$ . of the  
S.W. cor. of the claim.

Set a granite stone  
12 x 12 x 8 ins. 7 ins. in the  
ground at the point  
of intersection <sup>for closing cor</sup> to Secs 8 & 17.  
marked c. c. (Canaoa claim)  
and raised a mound  
of stone 8 links W. of cor.

Surface level

Soil 4<sup>th</sup> rate

No grass

Scattering brush

T19 S. R13E.

71

No. 891

Chains

North bet. Secs. 7 & 8

Pa 12° 9' E.

40.00 Set a Volcanic stone 13x10x8  
ins. 8 ins. in the ground  
for  $\frac{1}{4}$  Sec. cor. marked  $\frac{1}{4}$  on W  
face, and raised a mound of  
stone alongside.

61.00 Cross Dry Wash course East

80.00 Set a Granite stone 25x18x14  
ins 18 ins. in the ground.  
for cor. to Secs. 5, 6, 7 & 8,  
marked with 5 notches  
on S. and E. edges, and  
raised a mound of stone  
alongside.

Surface level

Soil 4<sup>th</sup> rate

Grass poor

T19 S. R. 13 E.

Charris

Scattering brush

East on a true line  
bet. Secs. 5 & 8.Va  $12^{\circ}9' E$ .

57.00

Cross Dry Wash course SE

40.00

Set a Granite stone 15x10  
x 7 ins 9 ins. in the  
ground for  $\frac{1}{4}$  Sec. cor.  
marked  $\frac{1}{4}$  on N. face,  
and raised a mound  
of stone alongside.

41.14

Intersect the West ldy. of  
the San. Ignacio de La  
Canoa Private Land Claim  
at a point 260.42 chs  
 $N 22^{\circ}56' E$ . of the S.W. cor

Claim's

of the claim.

Set a Granite stone  
14x9x8 ins. 9 ins. in the  
ground at the point of  
intersecting <sup>for closing cor</sup> to Secs 5 & 8.  
marked C.C. (Canoa Claim)

and raised a mound of  
stone 8 links W. of cor

Surface level

Soil 4<sup>th</sup> rate

Grass poor

Scattering brush

From the Cor. to Secs. 5, 6, 7 & 8  
just established by me. I  
run West on a random line  
bet. Secs. 6 & 7.

T 19 S. R 13 E,

Chamis

N 12° 9' E.

40.00

Set temporary 1/4 Sec. cor.

80.30

Intersect the W. bdy. of  
T 15 miles N. of Cor. to  
Secs. 1, 6, 7 & 12. which is  
a Granite stone 22 x 12  
ins. above the ground  
marked with 1 notch  
on N. and 5 notches on S.  
edges, and a mound of  
stone alongside. from which  
A mesquite tree 6 ins in  
diam bears S 35° E. 115 links  
dist. marked T 19 S. R 13  
E. S. 7 B. T.

A Mesquite tree 10 ins in  
diam. bears N 45° W. 160 links  
dist. marked T 19 S. R 12 E. S. 1 B. T.



T19 S. R. 13E.

Chamie

Thence I run

N89°54'E. on a true line bet.  
Secs. 6 & 7, with same Va.

40.30

Deposited a marked stone 12  
ins. in the ground for  $\frac{1}{4}$   
Sec. cor. dug pits 18x18x12 ins  
E & W. of stone 5 $\frac{1}{2}$  ft. dist.  
and raised a mound of  
earth 1 $\frac{1}{2}$  ft. high 3 $\frac{1}{2}$  ft. base  
over it. In E. pit drove a  
stake 2 ft. long 2 ins. sq. 12  
ins. in the ground marked  
 $\frac{1}{4}$  S. on N. face.

80.30

The cor. to Secs. 5, 6, 7 & 8.

Surface level

Soil 3 $\frac{1}{4}$  rate

Grass poor

Scattering brush

Charis

North on a random  
line bet. Secs. 5 & 6,

Va 12° 9' E.

40.00  
73.15

Set temporary 1/4 Sec. cor.  
Intersect the N. bdy. of Twp  
35 links E. of cor. to Secs. 5, 6.  
31 + 32 which is a Post 4  
ins. sq. in mound of  
earth properly marked  
and notched, and fits  
of required size.

Thence I run

S 0° 15' E. on a true line  
bet. Secs. 5 & 6 with same Va.

1.65  
27.65  
33.15

cross Dry Wash course S E  
cross Dry Wash course S E  
Set a Granite stone 14x14x8

T 19 S, R 13 E.

Chamis

vis. 9 ins. in the ground  
for 1/4 Sec. cor. marked 1/4 on  
W. face. and raised a mound  
of stone alongside.

69.65 Cross Dry Wash Course SE

73.15 The cor. to Sec. 5, 6, 7 & 8.

Surface level

Soil 4<sup>th</sup> rate

Grass poor

Scattering brush

I carefully examined the  
adjustments of my solar  
transit to-day particularly the  
latitude and reversing appa-  
ratus. and found them correct.

May 26<sup>th</sup> 1885

General Description  
T<sup>p</sup> 19 S. R 13 E.

The surface in the township is level, and the grass is mostly very poor, but in some places it is good.

Scattering brush is found throughout the township, in some places it is dense.

There are two houses and very good improvements in Sec. 32.

The S. E. cor. of the Canoa claim bears N 52.50 chs dist. from a point 120 links E. of the 4. Sec cor. to Sec. 33, on the S. bdy of T<sup>p</sup> 19 S. R 13 E.

Final Oaths for Surveys.

LIST OF NAMES.

BOOK 891

A List of the Names of Individuals employed by  
Lewis Walfley U. S. Deputy Surveyor to  
assist in running, measuring and marking the lines and  
corners described in the foregoing Field Notes of the survey of  
the *interim and subdivision lines*  
*of Tps 19 + 20 S. R 13 East*

of the principal base and meridian in the Territory of Arizona,  
showing the respective capacities in which they acted.

*Wilson Kerr marker*

*Bernard Gange chainman*

*G. Harry Keeney "*

*Thos W. Swamy Arson*

*Robt. T Bradford Flagman*

*W H Wiley mound man*

Final Oaths of Assistants.

We hereby certify that we assisted Lewis  
Walfley U. S. Deputy Surveyor, in surveying  
the exterior and subdivision  
lines of The 19+20 S. R. 13E

of the principal base and meridian in the Territory of Arizona,  
as are represented in the foregoing field notes as having been  
surveyed by him and under his direction; and that said Survey  
has been in all respects, to the best of our knowledge and belief,  
well and faithfully surveyed, and the corner monuments es-  
tablished according to the instructions furnished by the U. S.  
Surveyor-General for Arizona.

Bernard Zane  
Harry Kern  
Wiley R. Kern  
Robt. T. Bradford  
Thos. M. Sweeney  
W. H. Wiley

Subscribed and sworn to before me this 29<sup>th</sup>

day of May 1885

Lewis Walfley

Notary Public.

Final Oath of U. S. Deputy Surveyor.

BOOK 891

I *Lewis Walfley*

United States Deputy Surveyor, do solemnly swear that in  
pursuance of instructions received from *Royal*

*A Johnson* U. S. Surveyor General for Ari-  
zona bearing date of the *14* day of *April*

1885 I have well, faithfully, and truly, in my own proper  
person and in strict conformity, with the instructions furnish-  
ed by the U. S. Surveyor General for Arizona, the surveying  
manual and the laws of the United States surveyed the

*Exterior and Subdivision lines*  
*of Tps 19 & 20 S. R 13 E.*

of the principal base and meridian in the Territory of Ari-  
zona, as are represented in the foregoing field notes as having  
been surveyed by me and under my direction; and I do further  
solemnly swear that all the corners of the said survey have been  
established and perpetuated in strict accordance with the survey-  
ing manual, printed instructions, the special written instruc-  
tions of the U. S. Surveyor General for Arizona, and in the

specific manner described in the field notes, and that the foregoing are the true field notes of such survey, and should any fraud be detected I will suffer the penalty of perjury under the provisions of an Act of Congress approved August 8, 1846.

*James Wolfenbarger*

U. S. Deputy Surveyor.

Subscribed and sworn to before me, this *16<sup>th</sup>*

day of *June* 1885

*John W. Gray*

Notary Public.





## U. S. Surveyor General's Office,

Tucson, Arizona, Nov 4<sup>th</sup> 1885

The foregoing Field Notes of the Survey of the

Subdivision lines of T 19 S.

R 13 E

Of the Gila and Salt River Base and Meridian, Arizona, execu-

ted by Lewis Wolfley

Deputy Surveyor, under his contract of the 11<sup>th</sup>

day of April, 1885, having been

critically examined and the necessary corrections and explana-

tions made, the said Field Notes and the surveys they describe

are hereby approved

Royal A. Johnson  
Surveyor General.