

Index

BOOK 900
2 No. 900

900

Field Notes

BOOK 900

OF THE SURVEY OF THE

SUDIVISION LINES

— OF — No. 900

Township 20 S Range 16 E

Gila and Salt River Base and Meridia

ARIZONA.

By Lewis Wolfley D. S.

under contract dated Apr 11, 1885.

Survey commenced June 5th, 1885.

Survey completed June 10th, 1885.

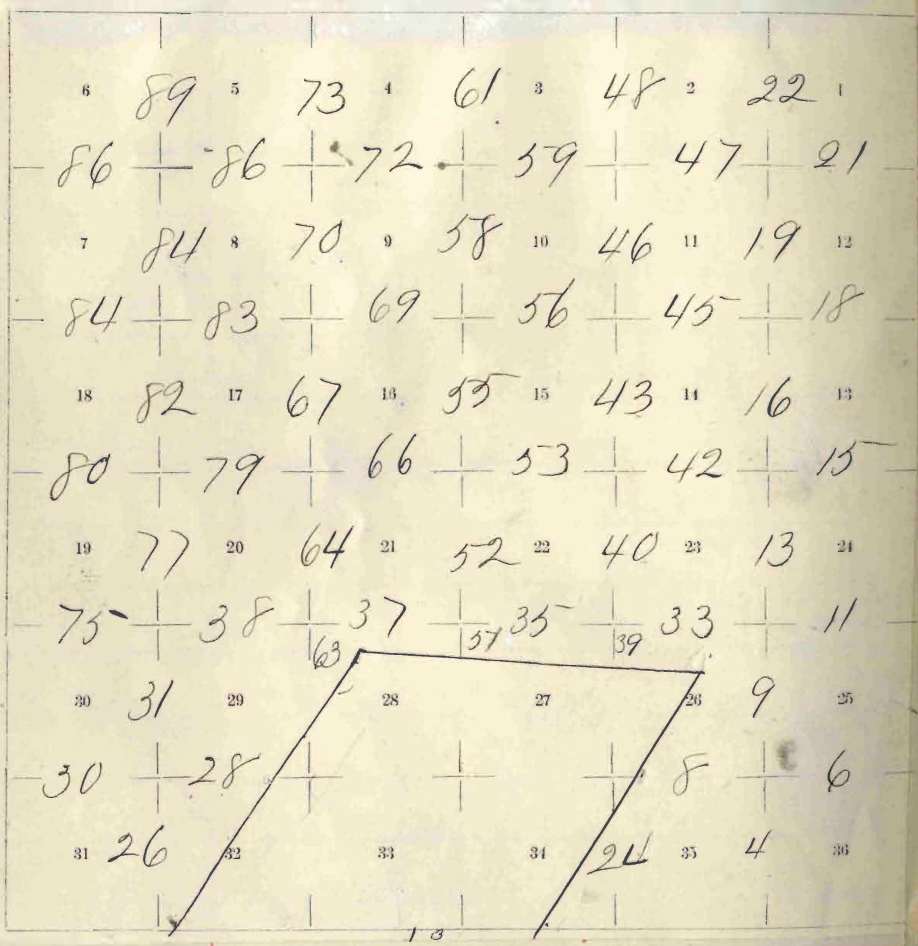
d

✓ BOOK 900

INDEX.

Township 20 S., Range 16 E.

Gila and Salt River Meridian.



For preliminary oaths and description of instrument see Book

T 20 S. R 16 E.

No. 900

Chains

Connecting of the S. E.
Cor. of Camp Crittenden
with the 4th Stand South

In accordance with the
instructions and before begin-
ning the Survey, of the T²⁰
I connected the S. E. cor. of
Camp Crittenden W. S. of
military reservation with
the 4th Stand South, by
running work from the
S. E. cor. of the reservation
to the 4th Stand South
intersecting it at ^{point} 33.70 Chs. and at a
15.25 Chains West of Stand
Cor. to Secs. 33 & 34, T²⁰ S. R 16
which is a Lime stone
15x8 ins above the ground

T20 S. R16E.

hairs

properly notched and
mound of stone alongside.

Beginning at the Stand
Cor to Secs 35 & 36. on S.
bdy. of T20 South R16E.
which is a Post 4 ins.
sq. in mound of earth
properly marked and
notched and a mound
of stone alongside.

Run North
bet. Secs 35 & 36.

W 12° 6' E.

Descend gradually
over rolling ground

0 100

Set a Volcanic stone 12x8x7

T20 S. R16 E.

Chains

11 ins. in the ground
for $\frac{1}{4}$ Sec. Cor. marked $\frac{1}{4}$
on W. face, and raised a
mound of stone along side
52.00 Cross road bears N 70° W 80

80.00 Set a Line stone $17 \times 12 \times 8$
11 ins. in the ground for
Cor. to Secs. 25 & 26. 35 & 36.

marked with 1 notch on
S & E. edges, and raised a
mound of stone along side
from which

An Oak tree 16 ins. in
diam. bears $N 10^{\circ} E$ 60 links
dist marked T20 S. R16 E.
S25. B. T.

An Oak tree 14 ins. in dia
bears $N 70^{\circ} W$. 110 links. dis

T20 S. R 16E.

chains

marked T20 S. R 16E. S26. B5.
 Surface rolling
 Soil 4th rate
 Grass good
 Scattering Oak trees

Cast on a random line
 bet. Secs. 25 & 36.

Td 12° 6' E.

40.00

Set temporary 1/4 Sec. Cor.

80.40

Intersect the E. bay. of T_p
 25 1/2 miles N. of cor. to Secs.
 25, 30, 31 & 36. which is a
 Post 4 mi. sq. in mound
 of earth properly marked
 and pits of required
 from which

T20 S. R 16 E.

Chains

An Oak tree 10 ins. in diam
bears S $84\frac{1}{2}^{\circ}$ W. 122 links dist.

An Oak tree 10 ins. diam
bears S $87\frac{1}{4}^{\circ}$ E. 238 links dist.

Thence from

N $89^{\circ} 49'$ W. on a true line
bet. Secs. 25 + 36. with same
and over rolling ground

40.20

Set a 2 line stone 13x10x8 in.
8 ins. in the ground for $\frac{1}{4}$
Sec. cor. marked $\frac{1}{4}$ on N. face
and raised a mound of
stone alongside.

80.40

The cor. to Secs 25, 26, 35 & 36

Surface rolling
Soil 4th rate
Grass poor
Scattering brush

T20 S. R16 E.

Chains

West on a true line
bet. Secs 26 & 35

Pa 12° 6' E.

40.00

Set a Limestone 12x10x8
ins. 7 ins. in the ground
for 1/4 Sec. cor. marked 1/4 on
N. face, and raised a
mound of stone alongside

68.00

Intersect the East Bay,
of Camp Crittenden
Military reservation at a
point 58.25 ches S 34° 56' 71"

of the N.E. cor. of the ^{reservation} Camp
I set a Sandstone 14x10x6
ins. 9 ins. in the ground
at the point of inter-
section ^{for closing cor.} to Secs. 26 & 35: marked

T20 S. R16E.

Chanis

C. C. (Camp Cuttenden) and
raised a mound of stone
8 miles East of Ctr.

Surface rolling

Soil 2nd rate

Grass fair

Scattering Oak trees

North bet. Secs. 25 + 26

T20 S. R16E.

Descend gradually
over rolling surface -

1,000

Cross road bears E + W.

8,000

Enter Sonora Valley Course

1800

Cross Huahuaca + Cuttenden
road bears N. E + S. W.

T20 S. R16E.

Chains

- 24.50 Cross Rail Road bears $A78^{\circ}E$.
and leave Valley.
- 27.00 Cross Crittenden's Tubae
road bears $N. E + S. W$.
- 40.00 Set a Granite stone $12 \times 8 \times 6$
ins. 7 ins. in the ground
for 14 Sec. cor. marked 14 on
W. face. and raised a
mound of stone alongside.
- 80.00 Set a Sand stone, $6 \times 8 \times 6$
ins. 11 ins. in the ground
for cor. to Secs. 23, 24, 25 + 26.
marked with 2 notches
on S. and 1 notch on E.
edges, dug pits $18 \times 18 \times 12$
ins. in each Sec. $5\frac{1}{2}$ ft.
dist. and raised a mound
of earth 2 ft. high $4\frac{1}{2}$ ft.

T 20 S. R 16 E.

Charris

base alongside.

Surface rolling
Sole 3rd rate

Grass good

Scattering trees 40chs.

W. " 40..

East on a random line
bet. Secs. 24 & 25.

$\text{N} 12^{\circ} 6' \text{E.}$

40.00 Set temporary 1/4 Sec. cor.

80.40 Intersect the E. bdy. of Tr
48 links S. of cor. to Secs.

19, 24, 25 & 30. which is a

past 4 ins. eq. in mound
of earth properly marked
with pits of required size

T 20 S. R 16 E.

chains

- Thence I run
S 89° 39' W. on a true
line bet. Secs. 24 & 25, with
same Va. and over valley.
- 40.20 Set a Granite stone 12x9x8
ins. 7 ins in the ground
for 1/4 Sec. cor. marked 1/4
on N. face, dug pits 18x18
x12 ins. E & W. of stone 5 1/2
ft. dist. and raised a
mound of earth 1 1/2 ft
high 3 1/2 ft. base alongside.
- 41.40 Cross Brittenden and
Huahuca road bears N.E.
& S.W.
- 53.40 Cross Rail Road at curve
- 58.40 Cross Dry Wash course ^{N.E. and S.W.}
- 75.15 Cross Brittenden & Tubac.

T20 S. R16 E.

Chains

road bears N. E. + S. W.

80.40

The cor. to Secs. 23, 24, 25 + 26.

Surface rolling

Soil 3rd rate

Grass fair

Scattering Oak trees ~~Hocho~~

~~No~~

~~~~~

North bet. Secs. 23 + 24,

On a 12° 6' E.

Ascend gradually over  
<sup>rolling</sup> ground

17.00

cross Dry Wash course S. E.

40.00

Set a Sand stone 12x10x8 in

7 ins. in the ground for 1/4

Sec. cor. marked 114 on W.

face. dug pits 18x18x12 ins

T20 S. R 16E.

charis

W. S. of stone  $5\frac{1}{2}$  ft. dist,  
and raised a mound  
of earth  $1\frac{1}{2}$  ft. high  $8\frac{1}{2}$   
ft. base. alongside, and  
continue through valley.

80.00

Set a Sand Stone  $13 \times 14 \times 6$   
ins.  $8$  ins. in the ground for  
Cor. to Secs 13, 14, 23 & 24,

marked with 3 notches on S.  
and 1 notch on E. edges  
and raised a mound  
of stone alongside.

Surface rolling  
Soil 4<sup>th</sup> rate

Grass good  
Scattering trees

---

T 20 S. R 16 E.

Charris

East on a random line  
bet. Secs. 13 & 24.

Wa  $12^{\circ} 6' E$ .

40.00 Set temporary  $\frac{1}{4}$  Sec. cor.  
80.45 Intersect the E. bdy. of Twp.  
60 links N. of cor. to Secs. 13, 18,  
19 & 24. which is a post 4  
ins. sq. in mound of earth  
properly marked with pits  
of required size.

Hence Turn

$N 89^{\circ} 34' W$ . on a true line  
bet. Secs. 13 & 24. with same Wa.

2.45 Cross Tucson & Brittenden road  
bears N. E. & S. W.

40.22 Set a sand stone  $16 \times 8 \times 6$  ins.  
11 ins. in the ground for  
 $\frac{1}{4}$  Sec. cor. marked  $\frac{1}{4}$  on N.

T90 S. R 16 E.

chains

face, and raised a mound  
of stone alongside.  
0.45 The cor. to Secs. 13, 14, 23 & 24.  
Surface rolling  
Soil 4<sup>th</sup> rate  
Grass good  
No trees

North bet. Secs. 13 & 14,  
Ta 12° 6' E.

12.00 Over rolling ground  
Ascend rolling <sup>ground</sup> and  
Enter Smith Canon bears  
N.W. & S.E.

24.00 Cross trail bears N.E. & S.W.  
37.00 Adobe house <sup>of 2 1/2 from ledge</sup> bears West  
about 12 chains dist. from



520 S. R. 16 E.

Charris

40.00 this point, and leave Canon  
Set a Sand stone 14x12x10  
ins. 8 ins. in the ground  
for  $\frac{1}{4}$  Sec. cor. marked  $\frac{1}{4}$  on  
W. face, and raised a mound  
of stone alongside.

80.00 Set a Sand stone 14x10x9 ins  
9 ins. in the ground for cor.  
to Secs. 11, 12, 13 & 14. marked  
with 4 notches on S. and 1  
notch on E. edges, and  
raised a mound of stone  
alongside.

Surface rolling  
Soll 4 $\frac{1}{4}$  rate  
Grass fair

L H Gornley's Desert claim  
in the S. E.  $\frac{1}{4}$  of Sec. 14

T20 S. R16E.

Chains

Cast on a random  
line bet. Secs. 12 & 13,

$\text{Va } 1206^{\circ} \text{E.}$

40.00

80.70

Set temporary  $\frac{1}{4}$  Sec. cor.  
Intersect the E. bdy. of Tpc.  
65 links S. of the Cor. to  
Secs. 7, 12, 13 & 18. which is a  
Post 4 ins. sq. in mound  
of earth properly marked  
and pits of required size

Thence I run

$S89^{\circ} 32' \text{W.}$  on a true line  
bet. Secs. 12 & 13, with same  
 $\text{Va.}$

40.35

Set a Sand Stone  $14 \times 10 \times 8$  ins.  
9 ins. in the ground for  $\frac{1}{4}$   
Sec. cor. marked  $\frac{1}{4}$  on N. face.

T20 S. R 16 E.

Champs

and raised a mound of stone  
alongside.

80.70 The cor. to Secs. 11, 12, 13 & 14.  
Surface rolling  
Soil 4<sup>th</sup> rate  
Grass fair  
No. trees

---

North bet. Secs. 11 &amp; 12.

Qa 12° 6' E.

40.00 Set. a Sand stone 14 x 10 x 8 in  
9 ins. in the ground for 14 Sec  
cor. marked 14 on N. face. and  
raised a mound of stone  
alongside.

80.00 Set. a Sand stone 76 x 7 x 6 ins  
11 ins. in the ground for

T20 S. R. 16 E.

chains

Cor. to Secs. 1, 2, 11 & 12, marked  
with 5 notches on S. and  
1 notch on E. edges, and  
raised a mound of stone  
alongside, from which

A White Oak tree 14 ins.  
in diam bears N45°E. 25  
links dist. marked T20 S.  
R16 E. S1 B, T.

A White Oak tree 12 ins in  
diam bears N25°W. 50 links  
dist. marked T20 S, R16 E.  
S2. B, T.

Surface rolling  
Soil 4  $\frac{1}{4}$  rate  
Grass good  
Scattering Oak trees

T20 S. R 16 E.

Chains

East on a random line bet.  
Secs. 1 & 12.

Va  $12^{\circ} 6' E$ .

40.00 Set temporary  $\frac{1}{4}$  Sec. cor.  
80.80 Intersect the E. bdy. of Tpk 60  
links S. of cor. to Secs. 16, 7 & 12,  
which is a post 4 ins. eq.  
in mound of earth, and  
pits of required size.

Thence I run

S  $89^{\circ} 34' W$ . on a true line  
bet. Secs 1 & 2, with same Va.  
and over heavy rolling ground

40.40 Set a Sand stone  $5 \times 10 \times 8$  ins.  
9 ins. in the ground for  $\frac{1}{4}$   
Sec. cor. marked  $\frac{1}{4}$  on N.  
face, and raised a mound  
of stone alongside.

T 20 S. R 16 E.

chain  
1.80

The cor. to Secs. 1, 2, 11 & 12,  
Surface mountainous  
Sole 4<sup>th</sup> rate  
Grass fair  
No. trees

---

North on a random  
line bet. Secs. 1 & 2  
N 92° 6' E.

40.00  
20.60

Set temporary  $\frac{1}{4}$  Sec. cor.  
Intersect the N. body of  
Tfr 60 links W. of Cor. to  
Secs. 1, 2, 35 & 36, which is  
a Post 4 in eq. in mound  
of earth properly marked  
and pits of required size,  
from which

T 20 S. R 16 E.

Chain

An Oak tree 4 ins. in diam bears S 56 1/4° E. 126 links, dist.

Thence I run

S 0° 26' W. on a true line bet. Secs. 1 & 2. with same Va. and descend over heavy rolling ground.

40.60 Set a Sand stone 18x10x5 ins. 12 ins. in the the ground for "4 Sec. cor. marked "4 on W. face, and raised a mound of stone alongside.

80.60 The Cor. to Secs. 1, 2, 11 & 12, Surface mountainous 40chs  
" rolling 40.60 "  
Soil 3<sup>rd</sup> rate  
Grass good

T20 S. R16 E.

hains

Scattering White Oak trees

I carefully examined the adjustments of my solar transit to-day particularly the latitude and reversing apparatus and found them to be correct.

June 5<sup>th</sup> 1885

From the Stand l. or to Secs. 34 & 35 on S. bdy. of T20 S. R16 E. which is a Post 4 ms. sq. in mound of earth properly marked, and a mound of stone along



side. I run North bet. Secs  
34 & 35.

$\forall$   $12^{\circ} 6' E$ .

Descend gradually over rolling <sup>ground to Sonolla valley</sup>

40.00

Set a Lime stone  $13 \times 9 \times 7$  ins.  
8 ins. in the ground for  $\frac{1}{4}$  Sec.

Cor. marked 14 on W. face  
and raised a mound of  
stone alongside

62.84

Intersect the E. bdy. of Camp  
Sentrunden Military reservation  
at a point  $79 \frac{1}{8}$  chs.  $S 34^{\circ}$   
 $56'$  W. of the N.E. cor. of the  
claim reservation -

Set a Lime stone  $10 \times 8 \times 6$  ins.

6 ins in the ground at  
the point of <sup>the corner</sup> intersection to  
Secs 34 & 35, marked C.C.

T20 S. R16E.

chains

(Camp Crutenden). and  
raised a mound of stone  
8 links East of cot  
Surface rolling  
Soil 3<sup>rd</sup> rate  
Grass fair

---

From the Stand. cor.  
to Secs 31 + 32. on S. bdy. of  
T<sup>h</sup> 20 S. R16E. which is  
a Post 4 ins. sq. in mound  
of earth properly marked.  
and suits of required size.  
From north left. Secs. 31 + 32. <sup>1/2</sup> 12<sup>th</sup> 12<sup>th</sup> S. R16E.  
Ascend over heavy  
rolling ground

40.00

Set a Boulder 14x12x8 ins.  
8 ins. in the ground for

T20 S. R16 E.

Chains

$\frac{1}{4}$  Sec. cor. marked 14 on W,  
face. and raised a mound of  
stone alongside.

80.00 Set a Granite stone  $12 \times 12 \times 8$   
ins. 7 ins. in the ground for  
cor. to Secs. 29, 30, 31 & 32. marked  
with 1 notch on S. and 5 notches  
on E. edges. and raised a  
mound of stone alongside.  
from which.

An Oak tree 10 ins. in diam  
bears S  $40^{\circ}$  E. 40 links dist.  
marked T20 S. R16 E. S 32, B, T.

An Oak tree 10 ins. in diam  
bears S  $85^{\circ}$  W. 60 links dist.  
marked T20 S. R16 E. S. 31, B, T.

Surface mountainous  
Soil  $3\frac{1}{2}$  oate

T20 S. R16E.

chain

Good grass  
Scattering Oak trees

---

East on a true line bet.  
Secs. 29 & 32.

At 12° 6' E.

29.50

Descend over rolling <sup>ground</sup> gradually  
cross Dry Wash of Adobe  
Canyon course S.E.

40.00

Set a Red Sand stone  
30x18x14 ins. 21 ins. in the  
ground for 1/4 Sec. cor.  
marked 1/4 on N. faces and  
raised a mound of stone  
alongside.

59.38

Intersect the N. bay. of  
Camp Crittenden Military

T20 S, R16 E

chain

reservation, at a point 80.14  
chs. S34°56'W of the N.W.  
Cor. of the claim reservation

I set a Lime stone 16x10  
x 9 ins 11 ins in the ground  
at the point of intersection  
<sup>for closing cor.</sup>  
to Secs 29 & 32 marked C.C.  
(Camp Crittenden) and raised  
a mound of stone & bricks  
West. of the Cor.

Surface mountainous

Soil 4<sup>th</sup> rate

Grass good

Scattering Oak trees

---

T20 S. R16E.

Chains

West on a random  
line bet. Secs. 30 & 31.  
Va  $12^{\circ} 6' E$ .

40,00

80,15

Set temporary  $1/4$  Sec. cor.  
Intersect the W. bdy. of Tpc  
20 links N. of cor. to Secs.  
25, 30, 31 & 36, which is a  
granite stone  $17 \times 10$  ins above  
the ground marked with  
1 notch on S. and 5 notches  
on N. edges, and a mound  
of stone alongside.

Thence I run

N  $89^{\circ} 57' E$ . on a true line  
bet. Secs 30 & 31, with same Va.  
and over heavy rolling  
ground.

T 20 S. R 16 E.

shams

10, 15 Set a Granite stone 16x10x8  
ins. 11 ins in the ground  
for 1/4 Sec. Cor. marked 1/4 on  
N. face. and raised a  
mound of stone alongside

41, 15 Cross Dry Wash course S.E.

80, 15 The cor. to Secs. 29, 30, 31 & 32.

Surface rolling  
Soil 3<sup>rd</sup> rate

Grass fair

---

North bet. Secs. 29 & 30.

N 12° 6' E

17, 00 Core heavy rolling ground  
Cross Dry Wash of Adobe  
Canyon course S.E.

40, 00 Set a Sand stone 18x14x10 ins

T 20 S. R. 16 E.

Chains

80.00

12 ins. in the ground for  
1/4 Sec. cor. marked 14 on  
W. face, and raised a  
mound of stone alongside.  
Set a Lime stone 18x14x8 ins.  
11 ins. in the ground for cor.  
to Secs. 19, 20, 29 & 30. marked  
with 2 notches on S. and  
5 notches on E. edges. and  
raised a mound of stone  
alongside.

Surface mountainous  
Soil 4<sup>th</sup> rate  
Grass fair  
Scattering Oak trees

---



T20 S. R16E.

Charris

From the cor. to Secs 19, 20  
29 & 30 just established by me  
I run East on a random line  
on the South bdy. of Secs  
20, 21, 22 & 23, setting temporary  
1/4 and Sec. corrs at every 40  
and 80 Chs. and at 3 miles  
79.8<sup>ch</sup> I arrive at a point  
90 miles S. of cor. to Secs  
23, 24, 25 & 26 recently estab-  
lished by me. From this  
corner I run S 89° 47' W.  
on a true line bet. Secs.  
23 & 26.

Or a 12° 6' E.

34.66. The N.E. cor. of Camp Crittenden  
Military reservation bears S 32° 26'  
dist. from this point.

T20 S. R16E.

Chains

39.97

Set a Post 3 ft. long 3  
 ins. sq. with marked  
 stone 12 ins. in the  
 ground for  $\frac{1}{4}$  Sec. cor.  
 marked  $\frac{1}{4}$  S. on N. face,  
 dug pit 18x18x12 ins ESW  
 of post  $5\frac{1}{2}$  ft. dist. and  
 raised a mound of earth  
 $1\frac{1}{2}$  ft. high  $3\frac{1}{2}$  ft. base  
 around post.

79.95

Set a Post 4 ft. long 4 ins.  
 sq. with marked stone 12  
 ins. in the ground for cor.  
 to Secs. 22, 23, 26 & 27, marked.  
 T20 S. S 23 on N.E.  
 R16E. S26 on S.E.  
 S27 on S.W. and S22 on N.W.  
 faces with 2 notches on S.

T20 S. R 16 E.

Cham

and East edges. dug pits 18x18  
x12 ins. in each Sec. 5 1/2 ft. dist  
and raised a mound of  
earth around post.

Surface rolling

Soil 4<sup>th</sup> rate

Grass fair

---

S 89° 47' W. on a true line  
bet. Sec. 22 + 27

W 12° 6' E.

39.97 Set a Volcanic stone 17x11x6 in  
12 ins. in the ground for 1/4  
Sec. cor. marked 1/4 on N. face  
and raised a mound of  
stone alongside.

51.95 Cross trail. bears N. E. + S. W.

T20 S, R16 E,

Chams

53.95  
79.95

cross Dry Wash course SW.  
Set a granite stone 18x16  
x12 ins. 12 ins. in the  
ground for cor. to Secs.  
21, 22, 27 & 28. marked  
with 2 notches on S. and  
3 notches on E. edges and  
and raised a mound  
of stone alongside, from which  
A White Oak tree 16 ins. in  
diam bears N55°E. 35 links  
dist. marked T20 S, R16 E.

S22, B, T.

Surface <sup>rolling</sup> ~~mountainous~~ 40 chs.  
" ~~Level~~ " "

Soil 4<sup>th</sup> rate  
Grass fair  
Scattering Oak trees

T 20 S, R 16 E.

Charris

S 89° 47' W. on a true line  
bet. Secs. 21 & 28.

Va 12° 6' E.

Ascend over heavy rolling ground  
39.97 Set a granite stone 18 x 12 x 6 ins  
12 ins. in the ground for 1/4  
Sec. cor. marked 1/4 on N. face  
and raised a mound of  
stone alongside.

40.95 Cross Dry Wash of Hog  
cañon course S.E.

79.95 Set a L. lime stone 18 x 10 x 8 ins.  
13 ins. in the ground for  
cor. to Secs. 20, 21, 28 & 29  
marked with 2 notches on  
S. and 4 notches on E. edges  
and raised a mound of

T20 S. R16E.

Chamis

stone alongside.

Surface mountamom

Soil 4<sup>th</sup> rate

Grass good

Scattering Oak trees

---

S89°47'W. on a true  
line bet. Secs 20 & 29,  
Qa 12°6' E

39.97

Set a Granite stone 14x10  
x7 ins. 9 ins. in the ground  
for 14 Sec. cor. marked 14  
on N. face, and raised a  
mound of stone alongside.

79.95

The Cor. to Secs 19, 20, 29 & 30  
from whence I started  
Surface rolling

520 S. R 16 E.

Shams

Soil 4<sup>th</sup> rate  
Grass fair  
Scattering brush

---

From the Cor. to Secs. 22, 23  
26 & 27, recently established  
by me. I run S. on a true  
line bet. Secs 26 & 27.

Q 120° 6' E.

27.75-

Intersect the N. bdy of the  
Camp Crittenden Military  
reservation at a point 457.56  
chs. N 84° 20' W. of the  
N.E. cor. of the <sup>reservation</sup> claim,

Set a post 4 ft. long 4  
ins. sq. with marked stone  
12 ins. in the ground in

T20 S, R16E.

Harris mound of stone  
 at the <sup>point of</sup> intersection <sup>for closing</sup> to Secs <sup>cor.</sup>  
 26. & 27 marked e.l.  
 (Camp Crittenden) on  
 S. T20 S, R16E. on N.  
 S 26 on E. and S 27 on  
 W. faces.

Surface rolling  
 Soil 3<sup>rd</sup> to 4<sup>th</sup> rate  
 Grass fair  
 Scattering Oak trees

From the cor. to Secs.  
 22, 23, 26. & 27 recently  
 established by me from  
 North bet. Secs. 22 & 23.  
 T20 S, R16E.  
 Over rolling ground



BOOK 900  
T20 S. R16 E.

chains

- 60.00 Set a Quartz stone 13x8x7 ins.  
pins. in the ground for  $\frac{1}{4}$  Sec.  
cor. marked  $\frac{1}{4}$  on W. face  
and raised a mound of  
stone alongside.
- 61.00 Cross trail bears N. 88° S. W.
- 63.00 Cross Dry Wash course S. E.
- 80.00 Set a Sand stone 14x9x9 ins.  
pins. in the ground for cor.  
to Secs. 14, 15, 22 & 23. marked  
with 3 notches on S. and 2  
notches on E. edges. and  
raised a mound of stone  
alongside from which  
A White Oak tree 14 ins. in  
diam bears @ 88° E. 25 links  
dist. marked T20 S. R16 E.  
S14, B. T.

T20 S. R 16E.

Chain

Surface rolling  
Soil 3<sup>rd</sup> rate  
Grass good  
Scattering Oak trees

---

East on a random  
line bet. Secs. 14 & 23,  
wa 12° 6' E.

10.00

9.95

Set temporary 1/4 Sec. cor.,  
Intersect the N & S line 15  
links S. of Cor. to Secs. 13, 14,  
23 & 24.

1.95

Thence I run  
S 89° 54' W on a true line  
bet. Secs 14 & 23, with same wa.  
and over rolling ground.  
Cross trail bears N. E & S. W.

T20 S. R16 E.

hans

39.97

Set a Volcanic stone  $12 \times 10 \times 8$  ins. 7 ins. in the ground for  $\frac{1}{4}$  Sec. Cor. marked  $\frac{1}{4}$  on N. face. dug pits  $18 \times 18 \times 12$  ins. E & W of stone  $5\frac{1}{2}$  ft. dist. and raised a mound of earth  $1\frac{1}{2}$  ft. high  $3\frac{1}{2}$  ft. base alongside.

79.95

The Cor. to Secs 14, 15, 22 & 23.  
Surface rolling  
Grass fair  
Soil 3 $\frac{1}{2}$  rate

North bet. Secs. 14 & 15;  
W  $12^{\circ} 6' E$ .

Over rolling ground

10.00

Set a Granite stone  $14 \times 8 \times 6$  ins 9 ins. in the ground for  $\frac{1}{4}$

T20 S, R16 E.

Chains

65.00

80.00

Sec. cor. marked  $\frac{1}{4}$  on W. face, and raised a mound of stone alongside.

Cross Dry Wash of Smith's Canon course S.E.

Set a Granite stone  $16 \times 12 \times 8$  ins.  $11$  ins. in the ground for cor. to Secs. 10, 11, 14 & 15, marked with 4 notches on S. and 2 notches on E edges, and raised a mound of stone alongside.

Surface rolling

Soil  $3 \frac{1}{2}$  to  $4 \frac{1}{2}$  rate

Good grass

Scattering Oak trees

---

BOOK 900  
T20 S. R 16E.

chain

East on a random line bet.  
Secs 11 & 14.

$\text{Cr } 12^{\circ} 6' \text{ E.}$

40.00 Set temporary  $\frac{1}{4}$  Sec. cor.  
80.12 Intersect the N & S. line 18 links  
S. of cor. to Secs. 11, 12, 13 & 14.

Thence from

$\text{S } 89^{\circ} 52' \text{ W.}$  on a true line  
bet. Secs. 11 & 14. with same Va.

40.06 Set a Sand stone  $16 \times 12 \times 12$  ins,  
11 ins. in the ground for  $\frac{1}{4}$   
Sec. Cor. marked "4" on N. face.  
and raised a mound of  
stone alongside

80.12 The cor. to Secs. 10, 11, 14 & 15.  
Surface rolling  
Soil 3<sup>rd</sup> to 4<sup>th</sup> rate  
Grass good

T20 S. R. 16 E.

hairs

North bet. Secs. 10 & 11  
Va 12° 6' E.

Ascend over heavy rolling  
ground

0.00

Set a Sand Stone 12x8x7  
ins. 7 ins in the ground  
for 1/4 Sec. Cor. marked 1/4  
on W. face, and raised a  
mound of stone alongside.

0.00

Set a Sand stone 16x8x6  
ins. 11 ins. in the ground  
for Cor. to Secs 2, 3, 10 & 11  
marked with 5 notches  
on S. and 2 notches on  
E. edges and raised a  
mound of stone along-  
side.

BOOK 900  
T20 S, R 16 E.

hans

Surface Mountainous  
Soil 4<sup>th</sup> rate  
Grass good  
Scattering oak trees

Cast on a random line  
bet. Secs. 2 + 11,

$\varphi$  12° 6' E

40.00 Set temporary  $\frac{1}{4}$  Sec. cor.

80.18 Intersect the N + S. line 25  
links N. of cor. to Secs. 1, 2, 11 & 12.

Thence run

N 89° 49' W. on a true line bet.  
Secs 2 + 11 with same  $\varphi$ .  
and ascend over heavy  
rolling ground.

10.09 Set a Sand Stone 14 x 13 x 6 ins.

T20 S. R 16 E.

chains

9 ins. in the ground  
for  $\frac{1}{4}$  Sec. Cor. marked  
 $\frac{1}{4}$  on N. face, and raised  
a mound of stone alongside

80.18

The cor. to Secs. 2, 3, 18 + 11.

Surface Mountainous

Soil 4<sup>th</sup> rate

Grass good

Scattering Oak trees

---

North on a random  
line bet. Secs. 2 + 3,

Or 12<sup>o</sup> 6' E.

40.00

80.75

Set temporary  $\frac{1}{4}$  Sec. Cor  
Intersect the N. bdy. of  
T<sub>20</sub> 55' links N. of Cor. to  
Secs. 2, 3, 34 + 35 which is



T 20 S. R 16 E.

Chains

a Black Oak tree properly  
marked and notched.

from which

An Oak tree 8 ins. in diam  
bears N 80<sup>1</sup>/<sub>4</sub>° E. 84 links. dist.

An Oak tree 12 ins. in diam  
bears S 48° E. 85 links dist.

An Oak tree 10 ins. in diam  
bears N 12<sup>1</sup>/<sub>4</sub>° W. 89 links. dist.

Thence Run

S 0° 24' W. on a true line bet.

Sec 2 & 3 with same Va. and

28.75 <sup>over heavy rolling ground</sup>  
cross road bears N. E. + S. W.

34.75 cross Dry Wash of Gardner's  
Canyon course N. E. 1 chain wide

40.75 Set a Sand stone 15 x 10 x 5 ins.  
9 ins. in the ground for 1/4

T 20 S. R 16. E.

Chamis

Sec. cor. marked 114 on  
W. face, dug pits 18x18x12  
ins. N + S. of stone 5 1/2 ft.  
dist. and raised a mound  
of earth 1 1/2 ft high 3 1/2  
ft. base alongside.

70.75

The cor. to Secs. 2, 3, 10 + 11

Surface Mountainous

Soil 4<sup>th</sup> rate

Good grass

Scattering Oak trees

---

I carefully examined the  
adjustments of my solar  
transit to day particularly  
the latitude and reversing  
apparatus and found them

T 20 S. R 16 E.

hamis

to be correct.

June 7<sup>th</sup> 1885

From the cor to Secs 21, 22, 27 & 28  
recently established by me. I run  
South on a true line bet.  
Secs 27 & 28.

$\theta = 12^{\circ} 6' E.$

19.81

Intersect the North bdy. of  
Camp Crittenden Military  
reservation at a point 55 chs  
 $S. 84^{\circ} 20' E.$  of the N. W. cor. of  
the claim reservation

Set a Post 4 ft. long  
4 ins. sq. with marked stone  
at the intersection, to Secs. 27 &  
28, marked S.S. (Camp Crittenden)

T20 S. R16E.

chairs

on S. T20 S. R16E. on N.  
S 27 on E. S 28 on W.  
face; dug pit, 18 x 18 x 12  
ins. and raised a  
mound of earth 9 ft. high  
4 1/2 ft. base around post,  
pit 5 links N. of post.  
Surface rolling  
Soil 3 1/2 rate  
Grass good  
Scattering Oak trees

---

North bet. Secs. 21 & 22.  
Qa 12° 6' E.

40.00 Over heavy rolling ground  
Set a Sand stone 14 x 8 x 6  
ins. 9 ins. in the ground

T20 & R16E.

Chains

for 14 Sec. cor. marked 14 on  
W. face, and raised a mound  
of stone alongside.

80.00 Set a Granite stone 16x12x10  
ins. 11 ins. in the ground  
for Cor. to Secs. 15, 16, 21 & 22,  
marked with 3 notches on  
S and E. edges, and raised  
a mound of stone alongside.

Surface mountainous

Soil 4<sup>th</sup> rate

Grass fair

Scattering White Oak. trees

---

East on a random line  
bet. Secs. 15 & 22,  $\angle$  12° 6' E

40.00 Set temporary 14 Sec. cor

T20 S. R16E,

Chains

80, 40

Intersect the N+S line  
16 links N. of Cor. to Secs.  
14, 15, 22 + 23.

Thence I run

N89° 53' W. on a true line  
bet. Secs. 15 + 22, with same va.

23, 40

Cross Dry Wash. course S.E.

40, 20

Set a Granite stone 12 x 10 x 8  
ins. 7 ins. in the ground  
for "4 Sec. cor. marked "4

on N. face, and raised a  
mound of stone alongside.

80, 40

The Cor. to Secs. 15, 16, 21 + 22.

Surface rolling

Soil 4<sup>th</sup> rate

Grass good

Scattering Oak trees

T20 S. R 16 E.

Charris

North bet. Secs. 15 & 16.

Qva 1206'E.

Ascend over heavy rolling ground

40.00 Set a Granite Boulder 17x14x12  
ins. 12 ins in the ground for  
"4 Sec. Cor. marked 14 on N,  
face, and raised a mound  
of stone alongside,

50.00 Cross Dry Wash Course S.E.

75.00 Cross Dry Wash of Smith's  
Canon course S.E.

80.00 Set a post 4 ft. long 4 ins.  
sq. with marked stone 12 ins.  
in the ground for Cor. to Secs.  
9, 10, 15 & 16 marked T20 S.  
S. 10 on N.E. R 16 E. S 15 on S.E.  
S 16 on S.W. and S 9 on N.W.  
faces with 4 notches on S.

T20, S. R16 E.

Chains

and 3 notches on E. edges,  
 dug pits 18x18x 12 ins. in  
 each Sec. 5 1/2 ft. dist. and  
 raised a mound of earth  
 2 ft. high 4 1/2 ft. base  
 around post.

Surface mountainous  
 Soil 4<sup>th</sup> rate  
 Grass good

East on a random line  
 bet. Secs, 10 + 15.

Va 1206 E.

40.00

80.12

Set temporary 1/4 Sec. cor.  
 Intersect the N + S line  
 16 links N. of cor. to Secs.  
 10, 11, 14 + 15.



520 S. R 16 E.

Chamis

Thence I run

N 89° 53' W. on a true line bet  
Secs 10 & 15 with same Wa,  
and ascend over heavy rolling  
ground

40.06 Set a sand stone 14x10x7 in  
9 ins. in the ground for 1/4 Sec  
Cor. marked 1/4 on N. face, and  
raised a mound of stone  
alongside,

80.12 The Cor. to Secs. 9, 10, 15 & 16.  
Surface mountainous  
Soil 4<sup>th</sup> rate  
Grass good  
Scattering Oak trees

---

T20 S. R16 E.

chains

Noth bet. Secs. 9 & 10,  
T20 S. R16 E

Over rolling ground.

40.00

Set a Post 3 ft. long 3 ins. sq. with marked stone 12 ins. in the ground for  $\frac{1}{4}$  Sec. Cor. marked  $\frac{1}{4}$  S. on W. face, dug pits 18x18x12 ins. At S. of post 5  $\frac{1}{2}$  ft. dist. and raised a mound

of earth 1  $\frac{1}{2}$  ft. high 3  $\frac{1}{2}$  ft. base around post,

80.00

Set a Post 4 ft. long 4 ins. sq. with marked stone 12 ins. in the ground for. Cor. to Secs. 3, 4. T20 S. R16 E. marked T20 S. S. 3 on N.E. R16 E. S. 10 on S.E. S. 9 on

T20 S. R16 E.

Charnis

S.W. and S 4 on N.W. faces  
 with 5 notches on S. and 3  
 notches on E. edges, dug pits  
 18x18x12 ins. in each Sec. 5 1/2  
 ft. dist. and raised a ~~round~~  
 of earth 2 ft. high 4 1/2 ft. base  
 around post.

Surface rolling

Soil 4<sup>th</sup> rate

Good grass

Scattering Oak trees

East on a random line  
 bet. Secs. 3 & 10

Wa 12° 6' E.

40.00 Set temporary 1/4 Sec. cor.

0.75 Intersect the N + S. line 40

T20 S. R 16 E.

Chains

links S. of cor. to Secs.  
2, 3, 10 & 11.

Hence, from

S89°43'W. on a true line bet.  
Secs. 3 & 10 with same Va.  
and ascend over heavy  
rolling ground.

40.37

Set a Sand stone 16 x 12 x 8  
ins. 11 ins. in the ground  
for  $\frac{1}{4}$  Sec. Cor. marked  $\frac{1}{4}$   
on N. face, and raised a  
mound of stone along  
side.

80.75

The cor. to Secs. 3, 4, 9 & 10,  
Surface mountainous.

Soil 4<sup>th</sup> rate

Grass good

Scattering Oak trees

T20 S. R 16 E.

Chanis

North on a random line  
bet. Secs. 3 & 4.

Qa 120° 6' E.

40.00 Set temporary 1/4 Sec. cor.

80.80 Intersect the N. Sdy. of Tpc  
85 links N of the Cor. to Secs

3, 4, 33 & 34, which is a Post

4 ins. sq. in mound of  
earth properly marked,

with pits of required size,  
from which,

An Oak tree 7 ins. in diam.  
bears S 21 1/4° W. 65 links dist.

An Oak tree 15 ins. in diam.  
bears S 43 1/4° E. 120 links dist.

An Oak tree 11 ins. in diam.  
bears S 77° E. 92 links dist.

T20 S. R16E.

chains

- Thence I run  
 $80^{\circ}36'W$ . on a true line  
 bet. Secs. 3 & 4. with camera,  
 and ascend over heavy  
 rolling ground.
- 37.80 Cross road bears E & W,  
 40.80 Set a granite stone 15x14  
 x8 ins. 9 ins. in the ground  
 for 1/4 Sec. cor. marked 1/4  
 on W face, and raised a  
 mound of stone along-  
 side.
- 47.15 Cross Dry Wash of Gardner  
 Canon 1 chain W side course E.
- 80.80 The cor. to Secs. 3, 4, 9 & 10.  
 Surface mountainous  
 Soil 3<sup>rd</sup> to 4<sup>th</sup> rate  
 Good grass

T20 S. R. 16 E.

Cham's

Scattering Oak trees

From the Cor. to Secs. 20,  
28 + 29. From South on a true  
line bet. Secs 28 + 29. Cor.  
recently established by me.  
79° 12' 6" E.

40.00 Set a Sand stone 20x 14x 1  
ins. 13 ins. in the ground  
for 1/4 Sec. cor. marked 1/4 on  
face, and raised a mound  
of stone alongside.

50.48 Intersect the N. bdy. of  
Crittendon Military reservation  
at a point 44.14 chs S 34.3°  
of the N.W. Cor. of the reserva  
Set a Quartz stone 18x 12x 8

T20 S. R16E.

Chains

12 ins. in the ground  
at the point of intersection  
~~to~~ <sup>for going</sup> Secs. 28 & 29 marked  
C. C. Camp (Brittenden)  
and raised a mound of  
stone & links W. of cor.

Surface more than one  
Soil 4<sup>th</sup> rate

Grass, good

Scattering Oak trees

---

North bet. Secs 20 & 21  
@ 12° 6' E.

Over heavy rolling  
ground.

35.50

39.75

Cross road bears S. E. & N. 1/4  
Cross Dry Wash of Hog



T20 S. R16 E.

Chamis

Canon course S.E.

40.00

Set a Granite stone 20x12x10  
ins., 14 ins. in the ground  
for  $\frac{1}{4}$  Sec. cor. marked  $\frac{1}{4}$  on  
W. face, and raised a  
mound of stone alongside.

80.00

Set a Sand stone 16x10x8 ins.  
9 ins. in the ground for cor. to  
Secs 16, 17, 20 & 21. marked with 3  
notches on S. and 4 notches  
on E. edges, and raised a mound  
of stone alongside, from which  
a White Oak tree 24 ins. in  
diam bears S 87° W. 95 links  
dist. marked T20 S. R16 E. S20. B.S.  
A White Oak tree 20 ins. in diam  
bears N 45° W. 75 links. dist.  
marked T20 S. R16 E. S17. B.S.

BOOK 100  
T20 S. R16 E.

hains

0.00

of stone alongside.

Set a Post 4 ft. long 4  
ins. sq. with marked stone  
12 ins. in the ground for  
Cor. to Secs 8, 9, 16 & 17.

marked T20 S. S 9 on N.E.  
R16 E. S16 on S.E. S17 on S.W.  
and S. 8 on N.W. faces with  
4 notches on S & E. edges  
dug pits 18x18x12 ins.

in each Sec. 5 1/2 ft. dist.  
and raised a mound  
of earth 2 ft. high 4 1/2  
ft. base around post

Surface rolling

Soil 3 7/8 rate

Grass good

Scattering Oak trees

T20 S., R16 E.

Chain

East on a random line  
bet. Secs 9 & 16.

Va 12' 6".

40.00 Set temporary 1/4 Sec. cor.

80.55 Intersect the N+S line 24  
links N. of cor. to Secs. 9, 10,  
15 & 16.

. Thence I run

N 89° 50' W. on a true line  
bet. Secs 9 & 16 with same Va.  
and over heavy rolling  
ground

40.27 Set a Post 3 ft. long 3 ins. sq.  
with marked stone 12 ins.  
in the ground for 1/4 Sec.  
marked 1/4 S. on N. face.  
dug pits 18x15x12 ins. E & W.

T20. S, R16E,

Chains

of post  $5\frac{1}{2}$  ft. dist.  
 and raised a mound  
 of earth  $1\frac{1}{2}$  ft. high  $3\frac{1}{2}$   
 ft. base around post.  
 0.55 The cor. to Secs. 8, 9, 16 & 17,  
 Surface rolling  
 Soil 3<sup>rd</sup> rate  
 Grass good  
 Scattering Oak trees

---

North bet. Secs. 8 & 9,  
 T20. S, R16E.

40.00 Over rolling ground  
 Set a Sand stone  $14 \times 10$   
 $\times 7$  ins. 9 ins. in the  
 ground for  $\frac{1}{4}$  Sec. cor.  
 marked 14 on W. face

T20 S, R16 E,

Charris

80.00 dug pits 18x18x12 ins. N.W. of  
stone 5 1/2 ft. dist. and raised  
a mound of earth 1 1/2 ft.  
high 3 1/2 ft. Base along side  
Set a granite stone 20x16x10  
ins. 14 ins. in the ground for cor.  
to Secs. 4, 5, 8 & 9. marked with  
5 notches on S. and 4 notches  
on E. edges, and raised a  
mound of stone alongside, from which  
A White Oak tree 8 ins. in diam  
bears S 35° W. 35 links, dist.  
marked T20 S, R16 E. S. 8, B, T,  
A White Oak tree 6 ins. in diam  
bears N 75° W. 25 links, dist.  
marked T20 S, R16 E. S. 5, B, T,  
Surface rolling  
Soil 4<sup>th</sup> rate

BOOK 500  
T20 S. R 16 E.

harris

Grass good

East on a random  
line bet. Secs. 4 & 9,  
Va 12° 06' E.

40.00 Set temporary 1/4 Sec. cor.  
79.85 Intersect the N+S line 30  
links N. of Cor. to Secs. 3, 4, 9  
& 10.

Thence I run  
N 89° 47' W. on a true line  
bet. Secs. 4 & 9 with same Va.  
and ascend over heavy  
rolling ground.

9.92 Set a granite stone 14x12x6  
ins. 9 ins. in the ground  
for 1/4 Sec. cor. marked '4.

T20 S. R16 E.

chance

on N. face, and raised a  
mound of stone alongside,

79.85 The cor. to Secs. 4, 5, 8 & 9

Surface mountainous  
Soil 4<sup>th</sup> rate

Grass good

Scattering Oak trees

---

North on a random  
line bet. Secs 4 & 5

Qa 12° 6' E.

40.00 Set temporary 1/4 Sec. cor.  
80.20 Intersect the E. bdy. of Twp  
18 links W. of cor. to Secs. 4, 5,  
32 & 33. which is a Post 4  
ins. sq. in mound of  
earth properly marked

T20 S, R 16E.

basis

from which  
An Oak tree 9 ins. in  
diam bears  $N 28 \frac{1}{4}^{\circ} E$ , 150  
links dist.

An Oak tree 10 ins. in diam.  
bears  $S 31 \frac{3}{4}^{\circ} E$ , 40 links dist.

An Oak tree 7 ins. in diam  
bears  $N 87 \frac{3}{4}^{\circ} W$ , 373 links dist.

Thence I run

$S 0^{\circ} 81^{\circ} W$  on a true line  
bet. Secs 4 & 5 with same va.

And descend over heavy  
rolling ground

10.20

Set a <sup>10</sup>Quartz stone  $18 \times 12 \times 8$   
ins., 12 ins. in the ground  
for  $\frac{1}{4}$  Sec. Cor. marked  $\frac{1}{4}$  on  
W. face, and raised a  
mound of stone alongside.



T20 S, R 16 E.

Chamis

- 65.20 Cross road bears E & W.
- 65.20 Cross Dry Wash of Gardner's  
Canyon 1 Chain wide, course E.  
and ascend abruptly
- 80.20 The cor. to Secs. 4, 5, 8 & 9.  
Surface mountainous  
Soil 3<sup>rd</sup> rate  
Grass fair

June 8<sup>th</sup> / 1885

From the cor. to secs. 19-20-29 and 30. previously  
established by me. I run

West on a random line  
bet. Secs. 19 & 30.

at 120° 6' E.

- 40.00 Set temporary 1/4 Sec. cor.
- 80.30 Intersect the W. bay. of T<sub>20</sub>.  
25 links South of the cor. to  
Secs. 19, 24, 25 & 30. which is a

T20 S. R16E.

Chamis

Granite stone 20x16 ins.  
above the ground marked  
with 4 notches on N. and  
2 notches on S. edges, and  
a mound of stone along-  
side. from which

A White Oak tree 12 ins. in  
diam bears N 20° E. 65 links  
dist. marked. T20 S. R16E. S19, B.T.

A Black Oak tree 12 ins. in diam  
bears N 15° W. 65 links dist.  
marked T20 S. R15E. S24, B.T.

Thence Iron

N 89° 49' E. on a true line  
bet. Secs. 19 & 30. with same Q.A.  
and over heavy rolling  
ground.

40. 30

Set a Lime stone 16x8x4 ins.

T 20 S, R 16 E.

Chains

17 ms in the ground for  $\frac{1}{4}$   
Sec. cor. marked  $\frac{1}{4}$  on N. face  
and raised a mound of  
stone alongside.

80.30 The cor. to Secs. 19, 20, 29 & 30.

Surface mountainous

Soil  $\frac{4}{10}$  rate

Grass poor

Scattering Oak trees

North bet. Secs. 19 & 20,

or  $12^{\circ} 6' E$ .

Over heavy rolling ground

39.00 Cross Dry Wash course S.E.

40.00 Set a Lime stone  $15 \times 10 \times 7$  ms.

9 ms. in the ground for  $\frac{1}{4}$

Sec. cor. marked  $\frac{1}{4}$  on N. face

T20 S. R 16 E.

hams

70.00

and raised a mound of stone alongside.

Across Dry Wash of Hog Canon Course E

80.00

Set a Lime stone 17x12 X 8 ins. 11 ins. in the ground for cor. to Secs. 17, 18, 19 & 20. Marked with 3 notches on S. and 5 notches on E. edges, and raised a mound of stone alongside.

Surface mountainous  
Soil 3<sup>rd</sup> rate  
Grass fair  
Scattering Oak trees

T20 S. R 16 E.

chain

East on a random line  
bet. Secs. 17 + 20.

$\text{Pa } 12^{\circ} 6' \text{ E.}$

40.00 Set temporary  $\frac{1}{4}$  Sec. cor.

79.80 Intersect the N. S. line 40  
links N. of cor. to Secs. 16, 17,  
20 + 21.

Thence I run

$N 89^{\circ} 43' \text{ W.}$  on a true line  
bet. Secs. 17 + 20, with same  
Pa. and over rolling ground

34.80 Cross Old road bears  $N 77^{\circ} + \text{SE.}$

39.90 Set a Sand stone  $14 \times 10 \times 8$  ins.  
9 ins. in the ground for  $\frac{1}{4}$   
Sec. cor. marked  $\frac{1}{4}$  on N.  
face, and raised a mound  
of stone alongside,

79.80 The cor. to Secs. 17, 18, 19 + 20.

T20 S. R 16 E.

hamis

Surface rolling  
 Soil 3<sup>rd</sup> rate  
 Grass fair

West on a random line  
 bet. Secs. 18 + 19.

Qa 12° 6' E.

10.00

Set temporary 1/4 Sec. Cor.

79.80

Intersect the West bdy. of  
 the Tp 30 links N. of Cor. to  
 Secs 13, 18, 19 + 24. which  
 is a granite stone 20x14  
 ins. above the ground  
 marked with 3 notches  
 on N + S edges and a  
 mound of stone alongside  
 from which

T20 S. R 16 E.

Charris

A Black Oak tree 8 ins. in diam  
bears  $N 35^{\circ} E$ . 40 links dist.  
marked T20 S. R 16 E. S 18, B. T.

A Black Oak tree 8 ins. in  
diam bears  $N 38^{\circ} W$ . 35 links  
dist. marked T20 S. R 15 E.  
S 13, B. T.

Thence I run

$N 89^{\circ} 47' E$ . on a true line  
bet. Secs. 18 & 19 with same  $\varnothing$ .

39.80 Set a Lime stone  $17 \times 14 \times 8$   
ins 12 ins. in the ground  
for  $\frac{1}{4}$  Sec. cor. marked  $\frac{1}{4}$  on  
N. face, and raised a  
mound of stone alongside.

65.80 Cross Dry Wash of Hog  
Canon course S. E.

79.80 The cor. to Secs. 17, 18, 19 & 20

T20 S, R16 E.

Chamie

Surface rolling  
Soil 3<sup>rd</sup> rate  
Grass fair  
Scattering brush

---

North bet. Secs. 17 + 18;  
Qa 12° 6' E.

|       |                                                                                                                                                                              |
|-------|------------------------------------------------------------------------------------------------------------------------------------------------------------------------------|
| 40.00 | Over heavy rolling ground.<br>Set a sand stone 18x12x8<br>ins. 12 ins. in the ground<br>for 1/4 Sec. Cor. marked 1/4<br>on W. face, and raised a<br>mound of stone alongside |
| 46.00 | cross road bears N. 71° 58' E.                                                                                                                                               |
| 79.50 | cross Dry Wash courses E.                                                                                                                                                    |
| 80.00 | Set a sand stone 16x14x12<br>ins. 11 ins. in the ground.                                                                                                                     |



T 20 S. R 16 E.

No. 900

Chamie

for Cor. to Secs 7, 8, 17 & 18,  
marked with 4 notches on  
S. and 5 notches on E. edge  
and raised a mound of  
stone alongside.

Surface Mountainous  
Soil 3<sup>rd</sup> rate  
Grass good

---

East bet. Secs 8 & 17.  
is omitted believing that  
Contract amount is about  
exhausted, nothing of  
importance.

---

84 BOOK 300  
T20 S, R16E.

Chamis

West bet. Secs. 7 & 8.  
is omitted, believing that  
contract amount is about  
exhausted, nothing of  
importance.

---

North bet. Secs 7 & 8.  
Wa 12° 6' E.

20.00

Over heavy rolling ground  
cross road bears N 91° 45' E  
and over level ground.

40.00

Set a Sand stone 20" x 10" x 5  
ins. 14 ins. in the ground  
for 1/4 Sec. cor, marked 1/4 on  
W. face, and raised a  
mound of stone alongside.

58.00

Descend slope abruptly at an

T20 S, R16E.

chains

angle of  $45^{\circ}$

68.00

Foot of slope and cross Dry  
Wash course East of Gardner's  
Lagoon.

75.00

cross road bears E & W.

80.00

Set a Quartz stone  $23 \times 18 \times 12$  ins.  
17 ins. in the ground for  
Cor. to Secs. 5, 6, 7 & 8. marked  
with 5 notches on S and E.

edges, and raised a mound of  
stone alongside, from which

A Black Oak tree 24 ins. in  
diam. bears  $N 87^{\circ} E$ . 90 links  
dist. marked T20 S, R16 E. S5, B, T.

Surface Mountainous 42 chs

" " Level 38 "

Soil 4<sup>th</sup> rate

Grass good.

T 20 S. R 16 E.

Chains

Scattering oak trees

---

East bet. Secs. 5 & 6.  
is omitted believing that  
Contract amount is about  
exhausted, nothing of  
importance.

---

West on a random line  
bet. Secs 6 & 7.

W 12° 6' E.

40.00 Set temporary 1/4 Sec. Cor.  
79.85 Intersect the West boundary of  
The 18 lines South of the  
Cor. to Secs. 4, 6, 7 & 12,  
which is a Red stone

T 20 S. R 16 E.

Chains

14x12 ins above the ground marked with 1 notch on N, and 5 notches on S, and a mound of stone alongside, from which,

A Black Oak tree 10 ins. in diam. bears N 25° E. 95 links dist. marked T 20 S. R 16 E. S. 6, B. T.

A White Oak tree 8 ins. in diam bears N 20° W. 1 chain dist. marked T 20 S. R 16 E. S. 1, B. T.

Thence from S 89° 52' E. on a true line bet. Sec. 6 & 7, with same Va. and descend gradually over heavy rolling ground

BOOK 500  
T20 S. R 16E.

Chamis

bears  $N56^{\circ}W$ . 166 links dist.

Thence I run

$S8^{\circ}6'W$ . on a true line  
bet. Secs. 576. with same Va.  
and over rolling ground.

40.20

Set a Sand stone  $16 \times 8 \times 7$   
ins. 11 ins. in the ground  
for  $\frac{1}{4}$  Sec. marked  $\frac{1}{4}$  on W.  
face, and raised a mound  
of stone alongside.

80.20

The cor. to Secs. 5, 6, 7 & 8,

Surface rolling

Soil  $3\frac{1}{4}$  to  $4\frac{1}{4}$  rate

Grass good

Scattering Oak trees

---

T 20 S. R. 16 E.

Chains

I carefully examined the adjustments of my solar transit to-day, particularly the latitude and reversing apparatus, and found them to be correct.

June 10<sup>th</sup> 1885

### General Description

Township 20 S. R 16 E.

This Township is located on the foot hills of the East slope of the Santa Rita Mountains.

The Sonora Creek runs across the S. E. Cor. of the Township, as does also the Sonora Rail Road. following

T20 S, R 16 E.

the course of the Valley  
of the Sordita.

Camp Crittenden  
U. S. Military Reservation  
is mostly in this  
township.

The entire township  
is covered with good  
grass, and a fair growth  
of oak trees.

The slopes of the  
hills are very steep and  
in many portions  
could hardly be climbed  
were it not for the grass  
roots.



T20 S, R16 E.

Gardners ranch is in the  
S.E. 1/4 of Sec. 6.

Gormleys Desert claim is  
in the S.E. 1/4 of Sec. 14.

Final Oaths for Surveys.

94

BOOK 900

LIST OF NAMES.

A List of the Names of Individuals employed by  
Lewis Wolfley U. S. Deputy Surveyor to  
assist in running, measuring and marking the lines and  
corners described in the foregoing Field Notes of the survey of  
the of the Subdivision lines and  
the <sup>West</sup> exterior line of T<sup>h</sup> 20 S,  
R. 16 E. and also the connecting  
line to Camp Crittenden

of the principal base and meridian in the Territory of Arizona,  
showing the respective capacities in which they acted.

- Theo. M<sup>rs</sup> Sweeney Master  
James Cannon chairman  
H. L. Grimshaw ..  
J. J. Blin<sup>ck</sup>corn ground man  
W. H. Wiley ..



Final Oaths of Assistants.

We hereby certify that we assisted Lewis Wolfley  
U. S. Deputy Surveyor, in surveying

of the Subdivision lines and the  
West exterior line of T<sup>h</sup> 20 S.  
R. 16 E. & also the Connecting  
line to Camp Crittenden

of the principal base and meridian in the Territory of Arizona,  
as are represented in the foregoing field notes as having been  
surveyed by him and under his direction; and that said Survey  
has been in all respects, to the best of our knowledge and belief,  
well and faithfully surveyed, and the corner monuments es-  
tablished according to the instructions furnished by the U. S.  
Surveyor-General for Arizona.

James Connor  
J. H. L. Grunewald  
Thomas H. Lucey  
W. H. Wiley  
S. J. Blinkhorn

Lewis Wolfley

Subscribed and sworn to before me this 11<sup>th</sup>

day of June 1885

Lewis Wolfley  
Notary Public.



Final Oath of U. S. Deputy Surveyor.

I *Lewis Walfley*

United States Deputy Surveyor, do solemnly swear that in  
pursuance of instructions received from *Royal A*  
*Johnson* U. S. Surveyor General for Ari-  
zona bearing date of the..... day of

1885 I have well, faithfully, and truly, in my own proper  
person and in strict conformity, with the instructions furnish-  
ed by the U. S. Surveyor General for Arizona, the surveying  
manual and the laws of the United States surveyed the

*The subdivision lines and West*  
*exterior line of T<sup>h</sup> 20 S, R 16 E,*  
*and also the connecting line*  
*to Camp Cutterman*

of the principal base and meridian in the Territory of Ari-  
zona, as are represented in the foregoing fields notes as having  
been surveyed by me and under my direction; and I do further  
solemnly swear that all the corners of the said survey have been  
established and perpetuated in strict accordance with the survey-  
ing manual, printed instructions, the special written instruc-  
tions of the U. S. Surveyor General for Arizona, and in the

97 specific manner described in the field notes, and that the foregoing are the true field notes of such survey, and should any fraud be detected I will suffer the penalty of perjury under the provisions of an Act of Congress approved August 8, 1846.

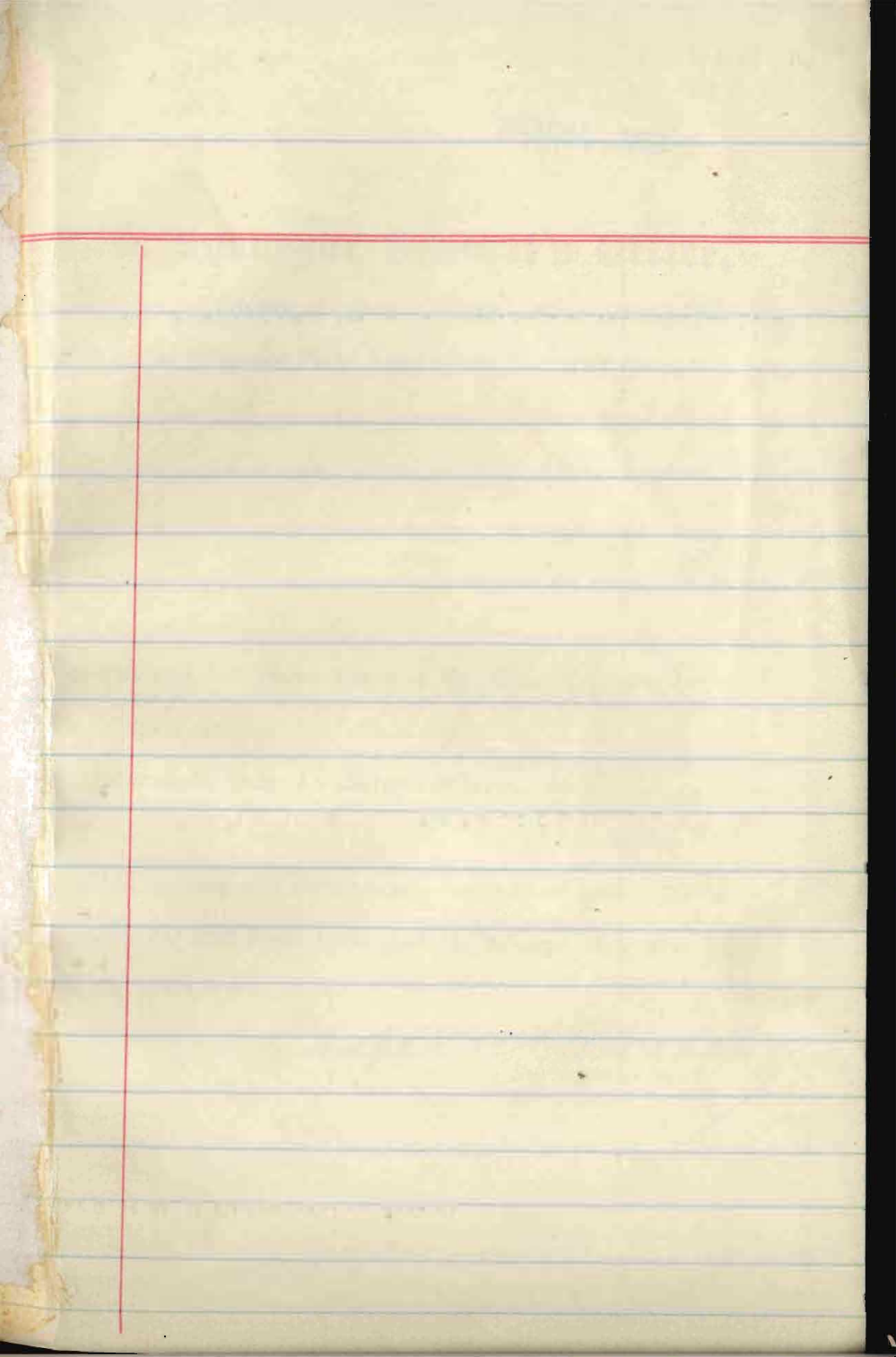
*James Volney*  
U. S. Deputy Surveyor.

Subscribed and sworn to before me, this 15<sup>th</sup>  
day of June 1885

*John W. Gray*  
Notary Public.



BOOK 900



98

BOOK 900

U. S. Surveyor General's Office,

Tucson, Arizona, Nov 4<sup>th</sup> 1885

The foregoing Field Notes of the Survey of the

Subdivision lines of T<sup>h</sup> 20 S  
R 16 E.

of the Gila and Salt River Base and Meridian, Arizona, execu-

ted by Lewis Wolphey

Deputy Surveyor, under his contract of the 11<sup>th</sup> day

of April, 1885, having been

critically examined and the necessary corrections and explana-

tions made, the said Field Notes and the surveys they describe

are hereby approved

Raphael Johnson  
Surveyor General.