

Platted  
Indexed  
Copied  
Completed

Book No. 1.

No. 919

BOOK 919

# Field Notes

OF THE SURVEY OF THE

BOOK 919

*Subdivision Series*

-OF-

Township *22 South* Range *16 East*

Gila and Salt River Base and Meridian

ARIZONA.

By *George J. Rosemeyer* D.S.

Under contract dated *April 13<sup>th</sup>* 1883.

Survey commenced *July 14<sup>th</sup>* 1883.

Survey completed *July 19<sup>th</sup>* 1883.

No. 919

919

*Contract No 26.  
Complete in this book.  
JOP*

3  
883

## Preliminary Oaths of Assistants.

We, *Thomas Shean*  
and *J. M. Lewis*

do solemnly swear that we will well and faithfully execute the duties of Chain Carriers; that we will level the chain upon even and uneven ground, and plumb the tally pins, either by sticking or dropping the same; that we will report the true distance to all notable objects, and the true lengths of all lines that we assist in measuring, to the best of our skill and ability and in accordance with the instructions given us.

*in the*  
*Survey of Subdivision District Townships*  
*22 South Range 16 East*

*Tom Shean*  
*J. M. Lewis*

Sworn to and subscribed before me, this *13<sup>th</sup>* day of

*July*, 188*3*

*George H. Roskutz*  
*a notary public*

1A.3

We, H. Drazz and W. C. Proctor

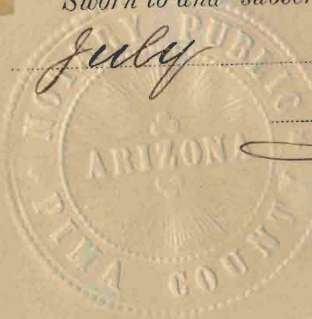
do solemnly swear that we will well and truly perform the duties of Assessor and Flagman

in the establishment of corners and other duties according to instructions given us, and to the best of our skill and ability.

In the survey of subdivisions of Township 22 South Range 16 East

H. Drazz  
W. C. Proctor

Sworn to and subscribed before me this 13<sup>th</sup> day of July, 1883



George Proskunge  
a Notary Public

13  
583

No. 919  
Field Notes

BOOK 919

1B

of the  
Survey of the  
Subdivision Lines  
of  
Fractional Townships  
N<sup>o</sup> 22 South, Range n<sup>o</sup>  
16 East of the Gila  
and Salt River Base  
and meridian -  
Arizona Territory  
as surveyed by

George J. Koskrug  
U.S. Deputy Sur<sup>v</sup>

Under his Contract  
Number 36.

Dated 13<sup>th</sup> April 1883

Survey commenced 14<sup>th</sup> July 1883

Survey completed 19<sup>th</sup> July 1883

INDEX.

Township 22 South, Range 16 East,

Gila and Salt River Meridian.

6	49	5	38	4	27	3	5	2		1
47		45		36		25				
7	44	8	34	9	24	10	7	11		12
41		40		31		22				
18		17		16	20	15	8	14		13
						17				
19		20		21	15	22	10	23		24
						12				
30		29		28		27		26		25
31		32		33		34		35		36

Referring the lines to the pages of the field notes.

## T. 22 S. R. 16 E

On the night of July 13<sup>th</sup> 1883 I took an observation of the Star Polaris, in accordance with the instructions contained in the manual of Surveys, and find the magnetic Variation at the cor to Sec<sup>s</sup> 2, 3, 34 & 35 on the South Boundary of Tp. 21 South Range N<sup>o</sup> 16 East to be  
12° 28' East.

I find that most of this Tp lies in Rough and Barren Mountains almost impracticable to Survey and unfit

## T. 22 S. R. 16 E.

for either agriculture  
or grazing purposes.  
I shall subdivide the  
north West portion  
and part of the center,  
thus covering the  
portion occupied by  
Settlers - I therefore  
commence at the cor:  
to Secs 2, 3, 34 & 35 on  
the South boundary  
of Twp. 21 South Range  
16 East, Gila and  
Salt River meridian,  
the country South and  
East of this cor. being  
rough and mountainous  
and almost impassable.

---

Preliminary to

## T 22 S. R. 16 E.

commencing the Survey  
I ran West for  $12^{\circ}28'0''$   
on a blank line, along  
the South boundary  
of Township 21 South  
Range 16 East between  
Sec<sup>s</sup> 3 and 34 and at  
40,00 chains found the  
 $\frac{1}{4}$  Sec cor and at 80,00  
chains found the cor  
to Sec<sup>s</sup> 3, 4, 33 and 34.  
My Compass will  
therefore run the same  
line as the Exterior  
boundaries, and the  
chaining practically  
agrees.

Survey commenced  
July 14<sup>th</sup> 1883 with a  
Young & Sons, Transit n<sup>o</sup> 5199.



## Subdivisions T. 22 S. R. 16 E.

I commenced at the cor  
 to Sec<sup>s</sup> 2, 3, 34 and 35 -  
 on the north boundary  
 of T<sub>21</sub>S. R<sub>16</sub>E. which is a post  
 3 ins square marked  
 T<sub>21</sub>S. R<sub>16</sub>E. S<sub>35</sub> on n. c.  
 S<sub>34</sub> on N. W  
 T<sub>22</sub>S. R. 16 E S<sub>3</sub> on S. W.  
 S<sub>2</sub> on S. E. faces with 2  
 notches on East and 4  
 notches on West edges,  
 set in a mound of stone  
 from which  
 an oak 15 ins diam bears  
 77° E 86 W's distant -  
 marked T<sub>21</sub>S R<sub>16</sub>E S<sub>35</sub>. B. J.  
 an oak 10 ins. diam, bears  
 52° W 160 W's distant -  
 marked T<sub>22</sub>S R<sub>16</sub>E S<sub>3</sub>. B. T.  
 an oak 12 ins. diam, bears

## Subdivisions T 22 S. R. 16 E.

- Ch 5 N 38° E 101 W<sup>2</sup> dist: marked  
 J. D. S. R. 16 E. S 35, B. J.
- Thence I run  
 South between Secs 2 & 3  
 Var 12° 28' East
- 18.00 Ravine 30 feet deep course  
 S. W. and commence ascent.
- 22.00 Summit of ridge 500 feet high x
- 38.50 Ravine 50 feet deep course S. E.
- 40.00 Set a post 3 feet long 3 ins  
 square, with marked stone,  
 12 ins in the ground for  $\frac{1}{4}$   
 Sec cor marked  $\frac{1}{4}$  S on West  
 face dug pits 18 x 18 x 12 ins  
 N and S of post 5  $\frac{1}{2}$  feet dist  
 and raised a mound of  
 earth 1  $\frac{1}{2}$  feet high 3  $\frac{1}{2}$  feet  
 base around post -  
 from which  
 An Oak 6 ins. diam.

## Subdivisions T. 22 S. R. 16 E.

ch<sup>s</sup> bears S. 21° E 18 1/2 k's dist.  
marked 1/4 S. 13. J.  
No other trees within limits

53.50 Ravine 15 feet deep, course  
S. W.

80.00 Set a post 4 ft. long 4 ins. square, with marked  
stone, 12 ins. in the ground for Cor. to Secs,  
2. 3. 10. 11 marked T. 22 S. S. 2 on  
N. E. R. 16 E S. 11 on S. E, S, 10 on  
S, W, and S, 3 on N, W, face, with 5 notch  
es on S, and 2 notches on E. edges, dug  
pits 18 x 18 x 12 ins. in each Sec., 5 1/2 ft. dist.  
and raised a mound of earth 2 ft. high 1 1/2 ft.  
base. around post.

Sand broken and mountainous  
covered with grass  
Soil 3<sup>d</sup> rate  
Timber some scattering  
oak -

## Subdivisions S. 22 S. R 16 E

- Chc South between Secs 10 & 11  
 Far  $12^{\circ} 28'$  East
- 6.00 Ravine 25 feet deep, course  
 S. W and commence  
 ascent of hill -
- 4000 Set a lime stone  $16 \times 10 \times 8$   
 ins. - 10 ins. in the ground  
 for  $\frac{1}{4}$  Sec cor marked  
 $\frac{1}{4}$  on West face and  
 raise a mound of stone  
 2 feet high  $3\frac{1}{2}$  feet base  
 alongside. Pits impracticable
- 65.00 Summit of hill bearing  
 N. N. E. and S. S. W and  
 about 350 feet high -
- 66.50 Commence descent -
- 80.00 Set a lime stone  $16 \times 12 \times 10$   
 ins. 10 ins. in the ground  
 for the cor to Secs 10. 11.  
 14 & 15 marked with 4P

## Subdivisions T22 S. 18. 16 E

The notches on S and 2  
notches on E edges and  
raised a mound of  
stone alongside pits impracticable  
sand broken and mountainous  
covered with grass -  
Sout 3<sup>rd</sup> 4<sup>th</sup> rate  
Timber scattering oak  
and mesquite -

South between Secs 14 & 15  
Var 12° 28' E

16,00 Foot of hill and ravine 30  
feet deep <sup>course West</sup> & commence ascent.

4000 Set a post 3 ft. long 3 ins. diam with marked  
stone, 12 ins, in the ground for  $\frac{1}{4}$  Sec. Cor.  
marked  $\frac{1}{4}$  S. on W face, dug pits 18 x 18 x 12  
ins. N and S of post 5 $\frac{1}{2}$  ft. dist. and raised  
a mound of earth 1 $\frac{1}{2}$  ft. high. 3 $\frac{1}{2}$  ft. base around  
post.

46,00 ravine 20ft deep course 72. W

## Subdivisions T. 22 S. R. 16 E.

che	
68.00	Summit of Spur 350 ft high
79.60	Foot of Spur and arroyo 12 feet wide, course N. 71. W
80.00	Set a post 4 ft. long 4 ins. square, with marked stone, 12 ins, in the ground for Cor, to Secs, 14, 15, 22 & 23 marked T. 22 S. 14 on N. E. R. 16 E S. 23 on S. E, S, 22 on S, W, and S, 15 on N, W, face, with 3 notch es on S, and 2 notches on E. edges, dug pits 18 x 18 x 12 ins. in each Sec., 5 1/2 ft. dist. and raised a mound of earth 2 ft, high. 4 1/2 ft. base. around post. From which a mesquite <i>Quercus dani</i> bears N 1° W 90 links dist marked T 22 S. R. 16 E S 15. 13. T. a Willow <i>Quercus dani</i> bears N. 57° W 20 lks dist marked T 22 S. R 16 E S. 15. 13. T. A mesquite <i>Quercus dani</i> marked bears N 37° W 80 lks dist marked T. 22 S R. 16 E S. 15. 13. T. No other trees within limits -

## Subdivisions T. 22 S. R. 16 E.

Chc Sand Rough & mountainous.  
 Soil 3  $\frac{1}{2}$   $\frac{1}{2}$  rate  
 Indications of mineral  
 along line  
 Timber some few oak  
 and mesquite.

South between Secs 22 & 23  
 Var  $12^{\circ} 28' E$

Line runs up steep face  
 of hill bearing E and N.  
 3100 Summit of hill about 500  
 feet high and line runs  
 along summit -

4000 Set a quartz stone, 12 x 10 x 8 ins., 8 ins.  
 in the ground for  $\frac{1}{4}$  Sec, Cor, marked  $\frac{1}{4}$  on W  
 face, dug pits 18 x 18 x 12 ins. N and S  
 of stone  $5\frac{1}{2}$  ft. dist. and raised a mound of earth  
 $1\frac{1}{2}$  ft. high.  $3\frac{1}{2}$  ft. base. alongside.

Commence descent -

## Subdivisions T. 22 S. R. 16 E

48.50	Ravine 15 feet deep course W.
71.00	Ravine 25 feet deep course W. Line runs up and along West slope of steep hill
8000	Set a post 4 ft. long 4 ins. square, with marked stone, 12 ins. in the ground for Cor. to Secs, 22.23.26 & 27 marked T. 22 S. 23 on N. E. R. 16 E S. 26 on S. E, S. 27 on S. W, and S. 22 on N. W. face, with 2 notch es on S, and 2 notches on E. edges, dug pits 18 x 18 x 12 ins. in each Sec. 5 ft. dist. and raised a mound of earth 2 ft. high. 4 ft. base. around post. From which an oak 10 ins diam bears N 21 1/2° W 39 W <sup>s</sup> dist marked T. 22 S. R. 16 E S. 22. 13. T. an oak 8 ins diam bears S 31° E 85 W <sup>s</sup> dist marked T. 22 S. R. 16 E S. 26. 13. T. No other trees within limits. Land rough & mountainous



## Subdivisions P. 22. S. R. 16 E.

Chc covered with grass -  
 Soil 344<sup>th</sup> rate  
 Timber, some scattering  
 Oak. 14<sup>th</sup> July 1883

I cannot continue this  
 line any further South  
 on account of the rough  
 and impassable nature  
 of the country -

I therefore run  
 West on true line  
 between Secs 22 & 24  
 by  $12^{\circ} 28' E.$

Line runs down steep  
 slope of hill

4.50 Ravine 10 feet deep course Tu.  
 3.00 Foot of hill and enter  
 Wash 2 ch<sup>s</sup> wide  
 course W. N. W.

## Subdivisions T. 22. S. R. 16 E.

Che  
4000

Set a post 3 ft. long 3 ins. diam with marked stone, 12 ins, in the ground for  $\frac{1}{4}$  Sec. Cor. marked  $\frac{1}{4}$  S. on  $70^\circ$  face, dug pits 18 x 18 x 12 ins. E and W of post  $5\frac{1}{2}$  ft. dist. and raised a mound of earth  $1\frac{1}{2}$  ft. high.  $3\frac{1}{2}$  ft. base. around post. From which

an oak 24 inis diam bears  
 $576^\circ$  W 195 W<sup>s</sup> dist marked  
 $\frac{1}{4}$  S. B. T.

an oak 8 inis diam bears  
 $513^\circ$  W 115 W<sup>s</sup> dist marked  
 $\frac{1}{4}$  S. B. T.

5800 main gulch running  
to the Sonora Valley  
course. 72.

58.35 Road from Harshaw  
to Sonora Valley bears  
72 and S.

61.50 other side of gulch and  
commence descent of  
stony hill -

## Subdivisions T. 22 S. R. 16 E.

Chains

80,00

Set a post 4 ft. long 4 ins. square, with marked stone, 12 ins. in the ground for Cor, to Secs, 21 22. 27 & 28 marked T. 22 S. 22 on N. E. R. 16 E S. 27 on S. E, S, 28 on S. W, and S, 21 on N. W, face, with 2 notches on S, and 3 notches on E. edges, dug pits 18" x 18" x 12 ins. in each Sec., 5½ ft. dist. and raised a mound of earth 2 ft. high. 4½ ft.

base. around post. From which an oak 8 ins diam bears

516° N 24 N<sup>5</sup> dist marked T 22 S. R 16 E S 28. 13. T.

An oak 8 ins diam bears

585° E 38 N<sup>5</sup> dist marked

T 22 S. R. 16 E. S 27. 13. T.

An oak 6 ins diam bears

774° E 28 N<sup>5</sup> dist marked

T 22 S. R. 16 E. S 22. 13. T.

An oak 6 ins diam bears

N 15° W 61 N<sup>5</sup> dist marked

T 22 S R 16 E S 21. 13. T.

Land rough & mountainous

## Subdivisions T. 22 S. 10. 16 E.

Chains - Soil 3/4 1<sup>st</sup> rate -  
 Timber scattering oak.

The land West and South  
 of this is rough, rugged  
 and broken and some  
 of it impossible to survey.

I therefore run north  
 between sections 21 & 22  
 Var  $12^{\circ} 28'$  East.

Line runs along East  
 slope of a Red mountain

23.00 Commence ascent of steep  
 spur from Red mountain.  
 spur running East.

31.00 Summit of spur about  
 500 feet high and  
 commence descent.

40.00 On north slope of spur

## Subdivisions T. 22 S. R. 16 E.

- Che Set a porphyry stone, 15 x 15 x 8 ins., 10 ins.  
 in the ground for  $\frac{1}{4}$  Sec, Cor, marked  $\frac{1}{4}$  S on W  
 face, dug pits 18 x 18 x 12 ins. N and S  
 of stone  $5\frac{1}{2}$  ft. dist. and raised a mound of earth  
 $1\frac{1}{2}$  ft. high,  $3\frac{1}{2}$  ft. base, alongside.
- 45.50 Ravine 10 feet deep course N.E.
- 74.00 Ravine 20 feet deep course E.
- 77.00 Ravine 18 feet deep course N.N.W.
- 80.00 Set a post 4 ft. long 4 ins. square, with marked  
 stone, 12 ins. in the ground for Cor, to Secs, 15  
 16. 21 & 22 marked T. 22 S. S. 15 on  
 N. E. R. 16 E S. 22 on S. E, S, 21 on  
 S, W, and S, 16 on N, W, face, with 3 notch  
 es on S, and 3 notch es on E. edges, dug  
 pits 18 x 18 x 12 ins. in each Sec.,  $5\frac{1}{2}$  ft. dist.  
 and raised a mound of earth. 2 ft. high,  $4\frac{1}{2}$  ft.  
 base. around post. From which  
 an Oak 6 ins diam bears  
 N  $12\frac{1}{2}^{\circ}$  W 61 N<sup>5</sup> dist marked  
 T 22 S. R. 16 E Sec 16 B. T.  
 an Oak 4 ins diam bears  
 N  $7^{\circ}$  W 63 N<sup>5</sup> dist marked

## Subdivisions T. 22 S. R. 16 E.

Chains T 22 S. R. 16 E S 16. 13. T.  
 A Juniper 18 ins diam bears  
 N 25° W 106 W dist: marked  
 T 22 S. R. 16 E - S 16. 13. T.  
 No other trees within limits.  
 Land rough & mountainous.  
 some grass on N & S portion  
 of line -  
 Soil 3<sup>rd</sup> & 4<sup>th</sup> rate -  
 Timber some scattering  
 oak & Juniper -

East on a random  
 line between Sec 15 & 22  
 Var 12° 28' E.

Line runs up and along  
 West slope of rock capped  
 hill -

5,50 Summit & commence descent -

## Subdivisions S. 22 S. R 16 E.

Chains

14.25 Foot of hill and main gulch running into the Sonvita Valley course N.

15.30 Road from Harshaw to the Sonvita Valley bears N and S.

16.00 Other side of gulch and commence ascent of steep hill.

36.40 Summit of hill 400 feet high and commence descent.

40.00 Set temporary  $\frac{1}{4}$  Sec. cor. Line runs along broken hill top.

64.50 Commence descent into gulch.

76.50 Gulch course N. N.

80.76 Intersect the N & S line

## Subdivisions T. 22 S. R. 16 E

Chains 28 lks S of the cor to Secs 14  
15. 22 and 23

Thence Iron

589° 48' W on true line  
between Secs 15 and 22  
with same var.

40.38

Set a quartz stone, 18 x 12 x 12 ins., 12 ins.  
in the ground for  $\frac{1}{4}$  Sec, Cor, marked  $\frac{1}{4}$  on N  
face, dug pits 18 x 18 x 12 ins. E and W  
of stone 5  $\frac{1}{2}$  ft. dist. and raised a mound of earth  
1  $\frac{1}{2}$  ft. high. 3  $\frac{1}{2}$  ft. base, alongside.

80.76 The cor to Secs 15. 16. 21  
and 22

Land rough & mountainous - covered with grass.  
Soil 3<sup>rd</sup> and 4<sup>th</sup> rate  
Timber scattering oak.



## Subdivisions T. 22 S. R. 10 E

Chains North between Secs  
15 and 16.

Var  $12^{\circ} 28' E$

Line runs along West  
side of rocky ridge.

21.00 Commence descent into  
Gulch.

40.00 Set a post 3 ft. long 3 ins. diam with marked  
stone, 12 ins. in the ground for  $\frac{1}{4}$  Sec, Cor,  
marked  $\frac{1}{4}$  S. on W face, dug pits 18 x 18 x 12  
ins. N and S of post 54 ft. dist. and raised  
a mound of earth 14 ft. high 34 ft. base. around  
post. From which.

Armesquite 8 ins diam bears  
 $540^{\circ} E$  56 W's dist: marked  
 $\frac{1}{4}$  S. B. T.

Armesquite 14 ins diam bears  
 $581^{\circ} E$  54 W's dist marked  
 $\frac{1}{4}$  S. B. T.

40.10 Gulch 2 feet deep course  
72. 72. W.

## Subdivisions S. 22 S. R. 16 E

- Chains and foot of hill, & commence  
 descent of spur bearing N. N. W.
- 57.50 Summit of Spur and Capt's  
 Ranch House bears  $S 57 \frac{3}{4}^{\circ} E$   
 15 ch<sup>s</sup> dist.
- 59.50 Foot of Spur and enter  
 main gulch running  
 into the Sonora Valley  
 course N. W.
- 64.00 Road from Starshaw to  
 the Sonora Valley bears  
 N. W. & S. S. E.
- 66.50 Leave main gulch and  
 commence ascent of hill
- 75.40 Summit and commence  
 descent -
- 80.00 Set a post 4 ft. long 4 ins. square, with marked  
 stone, 12 ins. in the ground for Cor. to Secs. 9  
 10. 15 & 16 marked T. 22 S. 10 on  
 N. E. R. 16 E S. 15 on S. E. S. 16 on  
 S. 15 and S. 9 on N. W. face with 4 notches

## Subdivisions T. 22 S. R. 16 E.

Chairs

on 3 and 3 notches on E. edges, dug  
 pits 18 x 18 x 12 ins. in each Sec.,  $5\frac{1}{2}$  ft. dist.  
 and raised a mound of earth 2 ft. high,  $4\frac{1}{2}$  ft.  
 base, around post.

Land rough & mountainous  
 covered  
 with grass.

Soil 3<sup>rd</sup> and 4<sup>th</sup> rate -  
 Timber scattering oak  
 and mesquite.

East on a random line  
 between Sec<sup>s</sup> 10 and 15  
 Cor 12° 28' E

22.00 Commence ascent from Cor  
 Summit of hill 400 feet high  
 and commence descent.

32.50 Foot and ravine 20 feet  
 deep, course. N. W.

49.00 Set temporary  $\frac{1}{4}$  Sec. cor:

## Subdivisions T. 22 S. R. 16 E

Chains

Line runs along south slope  
of hill -

79.90 Intersect N & S line 28 E & S  
N of the cor to Secs 10. 11. 14 & 15  
Thence I run

N 89° 48' W on a true  
line between Secs 10 & 15  
with same variation

39.95 Set a granite stone, 20 x 10 x 8 ins. 14 ins.  
in the ground for  $\frac{1}{4}$  Sec, Cor, marked  $\frac{1}{4}$  on 72.  
face, dug pits 15 x 18 x 12 ins. E and W  
of stone  $\frac{1}{2}$  ft. dist. and raised a mound of earth  
 $1\frac{1}{2}$  ft. high  $2\frac{1}{2}$  ft. base, alongside.

79.90 The cor to sec<sup>s</sup> 9. 10. 15 & 16  
Land rough & mountainous  
covered with grass.  
Soil 3 and 4<sup>th</sup> rate -  
Timber some scattering  
oak and mesquite.  
16<sup>th</sup> July 1883

## Subdivisions S. 22 S. R 16 E

Chains North between Sec 5  
9 and 10

Var  $12^{\circ} 28' 6$

.15 Ravine 10 feet deep course  
S. W.

37.50 Ravine 20 feet deep course  
S. W.

40.00 Set a post 3 ft. long 3 ins. diam. with marked  
stone, 12 ins. in the ground for  $\frac{1}{4}$  Sec. Cor.  
marked  $\frac{1}{4}$  S. on W face, dug pits 18 x 18 x 12  
ins. N and S of post 5 ft. dial. and raised  
a mound of earth  $1\frac{1}{2}$  ft. high  $3\frac{1}{2}$  ft. base around  
post. From which -  
a mesquite 10 ins diam bears  
S  $37^{\circ}$  W. 91 links distant  
marked  $\frac{1}{4}$  S. B. T.  
A mesquite 6 ins diam bears  
S  $5^{\circ}$  E 180 links distant  
marked  $\frac{1}{4}$  S. B. T.  
Line runs along W side  
of steep rocky hill -

## Subdivisions T. 22 S. R. 16 E.

Chains  
80.00

Set a post 4 ft long 4 ins. square, with marked  
stone, 12 ins. in the ground for Cor. to Sec. 3  
H. 9 and 10 marked T. 22 S. 3 on  
K. E. R. 16 E. S. 10 on S. E. S. 9 on  
S. E. R. 16 E. S. 10 on N. W. 1/4, with 5 notches  
on S. and 3 notches on E. edge, dug  
12 x 12 x 12 ins. in each Sec. 5 ft. dist.  
and raised a mound of earth 2 ft. high 4 ft.  
base. around post.

Land broken & mountainous  
covered with grass.  
Soil 3<sup>rd</sup> and 4<sup>th</sup> rate -  
Timber some scattering  
oaks and mesquite. -

East on a random line  
between Sec 3 and 10  
for 12° 28' to  
Commence ascent from  
corner.

## Subdivisions P. 22 S. 18. 16 E

Chains

6.50 Summit of high ridge  
about 500 feet high, bearing  
N and S & commence  
descent.

27.00 Foot and ravine 18 feet  
deep, course north.

40.00 Set temporary  $\frac{1}{4}$  Sec cor:  
Line runs along South  
side of steep hill from  
north.

80.32 Intersect the N & S line at  
50 links N of the cor to  
Sec 2, 3, 10 and 11.

Thence I run

N  $89^{\circ} 39' 11''$  on a true  
line between Sec 3 and  
10 with same  
variation.

## Subdivisions T. 22 S. R. 16 E

Chains

40. 16

Set a quartzite stone, 20 x 8 x 6 ins., 15 ins. in the ground for  $\frac{1}{4}$  Sec, Cor, marked  $\frac{1}{4}$  on TN free, dug pits 18 x 18 x 12 ins. E and W of stone 54 ft. dist. and raised a mound of earth 14 ft. high 24 ft. base alongside.

80. 32

The cor to Secs 3, 4, 9 and 10 -

Land rough & mountainous covered with grass -

Soil 3<sup>d</sup> and 4<sup>th</sup> rate -

Indication of mineral along line -

Timber scattering oak and mesquite -

North on a random line between Secs 3 and 4

var  $12^{\circ} 28' E$

Line runs along W side of steep hill

15.00

Line runs over north end



## Subdivisions T. 22 S. R. 16 E

- Cr 5 of ridge about 500 feet  
 high bearing N. N. W  
 and S. S. E. and  
 commence descent -  
 32.00 Foot of hill  
 40.00 Set temporary  $\frac{1}{4}$  Sec cor  
 47.30 Enter Wash course. S. W  
 48.30 Road bears S. W.  $\frac{1}{2}$  N. E.  
 Fenter's Ranch House  
 3 chains East.  
 50.50 Corral about 1 chain  
 square immediately  
 West of line, leave Wash  
 and enter rolling hills.  
 79.90 Intersect N boundary of  
 Tp 50 lks E of cor to Secs  
 2, 3, 34 and 35 which is  
 a post 3 1/2 square  
 marked T21S R16E S35 on N E  
 S34 on N W

## Subdivisions T. 22 S. R. 16 E.

Ch<sup>s</sup> T 22 S R 16 E S 3 on S Ward  
 S 2 on S.E. faces  
 with 3 notches on the E  
 and 3 notches on the W  
 edges, set in a monument  
 of stone. from which  
 An Oak 10 ins diam bears  
 S 32  $\frac{1}{2}$ ° N 130 W<sup>s</sup> distant  
 marked T 22 S R 16 E S 4  
 B. T.

An Cedar 10 ins diam bears  
 S 47° E 105 W<sup>s</sup> dist marked  
 T 22 S. R 16 E S 3. B. T.

An Oak 18 ins diam bears  
 N 75° W 57 W<sup>s</sup> dist marked  
 T 21 S. R 16 E S. 33. B. T.

An Oak 14 ins dia bears  
 N 68° E 111 W<sup>s</sup> dist marked  
 T 21 S R. 16 E S 34. B. T.

Hence I run

## Subdivisions T. 22 S. R. 16 E.

Chc.  $51^{\circ} \frac{1}{2} E$  on a true line  
between Secs 3 and 4  
with same var.

39.90 Set a post 3 ft. long 3 ins. diam with marked  
stone, 12 ins. in the ground for  $\frac{1}{4}$  Sec. Cor,  
marked } S. on W face, dug pits 18 x 18 x 12  
ins. 72 and 5 of post  $\frac{1}{4}$  ft. dist. and raised  
a mound of earth  $1\frac{1}{2}$  ft. high  $2\frac{1}{2}$  ft. base around  
post. from which

An oak 6 ins diam  
bears  $51^{\circ} E$  180 links dist  
marked  $\frac{1}{4}$  S. B. T.

A mesquite 6 ins diam  
bears  $565^{\circ} W$  62 links  
dist: marked  $\frac{1}{4}$  S. B. T.

79.90 The cor to Secs 3, 4, 9 & 10  
Sand rough <sup>mountainous</sup>  
Soil 3<sup>c</sup> & 4<sup>l</sup> rate -  
Timber scattering oak  
and mesquite -  
Indications of mineral

Subdivisions T. 22 S. 18. 16 E.

Ch<sup>e</sup> along South portion of  
Line -

From the cor to Sec 9  
10, 15 and 16

I run West on true  
line between Sec 9 & 16  
Var  $12^{\circ} 28' E$ .

-20 Ravine 10 feet deep course  
S. W. and line runs over  
point of hill -

14.50 Enter main gulch running  
into Sorvota Valley -  
course N. W.

21.00 Road from Harshaw  
to Sorvota Valley bears  
N. W and S E

22.50 Other side of gulch and  
enter rolling foot hills  
from Mountain on S. W.

## Subdivisions T. 22 S. R. 16 E.

Che  
4000

Set a post 3 ft. long 3 ins. diam with marked stone, 12 ins. in the ground for  $\frac{1}{4}$  Sec. Cor. marked S. on  $70^\circ$  face, dug pits 18 x 18 x 12 ins. E and W of post 5  $\frac{1}{2}$  ft. dist. and raised a mound of earth 1  $\frac{1}{2}$  ft. high 3  $\frac{1}{2}$  ft. base. around post. from which

a mesquite 8 ins diam bears  $562^\circ$  N 40 W<sup>s</sup> dist: marked  $\frac{1}{4}$  S. B. T.

a mesquite 15 ins diam bears  $72^\circ$  N  $87^\circ$  W<sup>s</sup> dist: marked  $\frac{1}{4}$  S. B. T.

8000

Set a post 4 ft. long 4 ins. square, with marked stone, 12 ins. in the ground for Cor. to Secs 8  
9. 16  $\frac{1}{4}$  marked T. 22 S. 9 on  
N. E. 15 E S. 16 on S. E. S. 17 on  
S. W and 8 on N. W. face, with 4 notches  
on S. and 4 notches on E. edges, dug  
pits 18 x 18 x 12 ins. in each Sec., 5  $\frac{1}{2}$  ft. dist.  
and raised a mound of earth 2 ft. high 4  $\frac{1}{2}$  ft.  
base. around post. from which  
an oak 6 ins diam bears

## Subdivisions T. 22 S. R. 16 E

Che 72 6°N 58 links distant  
marked T 22 S. R. 16 E 58  
B. T.

an oak 10 ins diam bears  
72 61°N 32 links distant  
marked T 22 S. R. 16 E  
S. 8. B. J.

No other trees within  
limits —

Land rough & mountainous  
covered  
with grass.

Soil 3<sup>rd</sup> & 4<sup>th</sup> rate.

Timber scattering oak  
and mesquite —

Indications of mineral  
along line —

## Subdivisions T. 22 S. R. 10 E

- Ch<sup>s</sup> North between Secs 8 & 9  
Var  $12^{\circ} 28' E$
- 1300 Enter main gulch running  
into Sonora Valley course  
N. 72. W.
- 3200 Road from Harshaw to  
Sonora Valley bears  $N 70^{\circ} W \pm 6 S E$ .
- 4000 Set a post 3 ft. long 3 ins. diam. with marked  
stone, 12 ins. in the ground for 1 Sec. Var,  
marked 1 S. on N face, dug pits 18 x 18 x 12  
ins. N and S of post  $3\frac{1}{2}$  ft. dist. and raised  
a mound of earth  $1\frac{1}{2}$  ft. high  $3\frac{1}{2}$  ft. base, around  
post. from which  
a mesquite 10 ins diam bears  
 $S 46^{\circ} W 28 W$ 's dist. marked  
 $\frac{1}{4}$  S. B. J.
- a mesquite 10 ins diam  
bears  $72^{\circ} E 150$  links  
dist. marked  $\frac{1}{4}$  S. B. J.
- 4400 Leave main gulch and  
line runs over point of

## Subdivisions T. 22 S. R. 10 E

- Che bluffs from hills on the East.
- 47.00 Summit of bluff & descend
- 52.00 Foot and enter gulch from Fetter and Hopkins Ranches. This gulch runs into the main gulch about  $\frac{1}{4}$  of a mile West.
- 67.00 Road bears N. E. & N. S. W.
- 74.50 Leave gulch course W. S. W. and enter high rolling hills.
- 80.00 Set a quartzite stone 16x8 x 6 in. 12 in. in the ground for the cor. to Sec 4. 5. 8 & 9 marked with 5 notches on S and 4 notches on E. edges and raised a mound of stone along side - pits impracticable. Land level in gulches - balance mountainous. Covered with grass



## Subdivisions T. 22 S. 18. 16 E.

Chc. Soil 1<sup>st</sup> and 3<sup>rd</sup> rate  
 Timber some few oaks  
 and mesquite -  
 17<sup>th</sup> July 1883

East on a random line  
 between Sec 4 and 9  
 Var 12° 28' E

- 3.00 Gulch 35 feet deep course S.  
 31.00 Enter bottom course S. W.  
 36.40 Road down bottom bears N. E.  
 and S. W.  
 40.00 Set temporary  $\frac{1}{4}$  sec. cor:  
 43.25 Leave bottom & commence  
 ascent of hill -  
 56.00 Summit 350 feet high  
 Hopkins' Ranch House  
 bears from this point  
 North 30 ch<sup>e</sup> dist: -  
 56.00 Commence descent into

## Subdivisions T. 22 S. R. 16. E

- The Ravine 100 feet deep -  
 64.00 Cross ravine course  
 W then S. W. & commence  
 ascent of steep full side -  
 80.46 Intersect 72 and S line  
 30 th's 72 of the cor to  
 Secs 3, 4, 9 and 10  
 Thence I run  
 72 89° 47' N on true  
 line between Secs 4 & 9 -  
 with same var: -  
 40.23 Set a post 3 ft. long 3 ins. diam with marked  
 stone, 12 ins, in the ground for 1/4 Sec. Cor.  
 marked 1/4 S. on N face, dug pits 18 x 18 x 12  
 ins. E and W of post 5 1/2 ft. dist. and raised  
 a mound of earth 1 1/2 ft. high, 3 1/2 ft. base, around  
 post from which  
 a mesquite 18 ins dia bears  
 N 55 E 318 links dist, marked  
 1/4 S. 13. J. - No other trees  
 within limits -

## Subdivisions T. 22 S. R. 10 E

Chc  
80.46 The cor to Secs 4, 5, 8 & 9  
Land in bottom level  
in mountains rough  
covered with grass.  
Soil in bottom 1<sup>st</sup> rate  
in hills 3<sup>rd</sup> and 4<sup>th</sup> rate.  
Timber some oak and  
mesquite -

North on random line  
between Secs 4 and 5  
Var  $12^{\circ} 28' E$ .

3.00 Ravine 25 feet deep course E.  
17.40 Summit of ridge 200 feet  
high and descend.  
40.00 Set temporary  $\frac{1}{4}$  Sec. cor:  
55.00 Arroyo 30 feet wide course  
S. W.  
798.0 Intersect N boundary of  
Tp 18 N<sup>5</sup> East of cor to

## Subdivisions T. 22 S. R. 16 E

Chc. Sec 4. 5. 32 and 33 which  
 is a post 3 ins square  
 marked T 215. R 16 E S 33 own E  
 S 32 on NW  
 T 22 S. R 16 E S 5 on S W and  
 S 4 on S E faces  
 with 4 notches on the E  
 and 2 notches on the W  
 edges - set in mound of  
 earth with pits -

Thence True

50° 08' E on a true  
 line between Secs 4 & 5  
 with same var. -

39.80 Set a post 3 ft. long 3 ins. diam with marked  
 stone, 12 ins, in the ground for  $\frac{1}{4}$  Sec, Cor.  
 marked  $\frac{1}{4}$  S. on W face, dug pits 18 x 18 x 12  
 ins. W and S of post  $5\frac{1}{2}$  ft. dist. and raised  
 a mound of earth  $1\frac{1}{2}$  ft. high.  $3\frac{1}{2}$  ft. base. around  
 post.

79.80 The cor to Secs 4, 5, 8 & 9

## Subdivisions T. 22 S. R. 16 E

Chc. Sand rolling grasshills.  
Soil 3<sup>c</sup>. rate.  
Timber some few oaks.

X From the cor to Secs 8, 9, 16  
and 17.

Run West on a true  
line between Secs 8 & 17  
Var  $12^{\circ} 28' E$

29.50 Gulch 30 feet deep course N.

40.00 Set a post 3 ft. long 3 ins. diam with marked  
stone, 12 ins, in the ground for  $\frac{1}{4}$  Sec, Cor,  
marked  $\frac{1}{4}$  S. on N face, dug pits 18 x 18 x 12  
ins. E and W of post  $5\frac{1}{2}$  ft. dist. and raised  
a mound of earth  $1\frac{1}{2}$  ft. high,  $3\frac{1}{2}$  ft. base. around  
post. from which

A cedar 18 ins diam bears  
 $S 45^{\circ} W 58$  dist. marked  
 $\frac{1}{4}$  S. B. T.

A cedar 15 ins diam bears  
N  $45\frac{1}{2}^{\circ} E 100$  dist. marked

## Subdivisions T. 22 S. R. 16 E.

Che 1/4 S. 13 T.

80,00

Set a post 4 ft. long 4 ins. square, with marked stone, 12 ins. in the ground for Cor. to Secs. 7 8, 17 & 18 marked T. 22 S. S. 8 on N. E. R. 16 E. S. 17 on S. E., S. 18 on S. W. and S. 7 on N. W. face, with 4 notch 05 on S, and 5 notch 05 on E. edges, dug pits 18 x 18 x 12 ins. in each Sec., 5 1/2 ft. dist. and raised a mound of earth 2 ft. high. 4 1/2 ft. base. around post.

Land rough broken hills from mountain on South, covered with grass.

Soil 3<sup>rd</sup> & 4<sup>th</sup> rate.

Timber some scattering Oak and Cedar.

X West on a random line between Sec. 7 and 18  
Var 12° 28' E.

## Subdivisions Tp 22 S. R 16 E

18.30	Ravine 25 feet deep course N
22.00	" 30 " " " N.N.W
38.10	" 50 " " " " N.N.W
40.00	Set temporary 1/4 Sec. cor.
79.10	Intersect West boundary of Tps: 26 W's north of the cor to Secs 7, 12, 13 and 18 which is a stone marked with 4 notches on S and 2 notches on N edges and ground of stone alongside. From which - An oak 10 ins diam bears N $13\frac{1}{2}^{\circ}$ E 205 Ws dist. marked T 22 S. R 16 E. S. 7. 13. T. Thence I run N $89^{\circ} 49'$ E on true line between Secs 7 and 18 with same variation 39.10 On West edge of ravine

## Subdivisions Tp 22 S. R 16 E.

Che.

Set a post 3 ft. long 3 ins. diam with marked stone, 12 ins, in the ground for  $\frac{1}{4}$  Sec, Cor, marked  $\frac{1}{4}$  S. on 70 face, dug pits 18 x 18 x 12 ins. E and W of post 5  $\frac{1}{2}$  ft. dist. and raised a mound of earth 1  $\frac{1}{2}$  ft, high. 3  $\frac{1}{2}$  ft. base. around post. From which

An oak 8 ins diam bears N 16  $\frac{1}{2}$ ° E 90 W <sup>5</sup> dist. mark <sup>10</sup>  $\frac{1}{4}$  S. 13. T. No other trees within limits -

79. 10 The cor to Sec 7. 8. 17 & 18 Sand rough hills from NW <sup>10</sup> on South, covered with grass.

Soil 3<sup>rd</sup> and 4<sup>th</sup> rate.

Timber some scattering oaks and cedars in prairies.



## Subdivisions Tp 22 S. R. 16. E.

Ch<sup>5</sup> North between Secs 7 & 8  
Var 12° 28' E.

38.50 Edge of Ravine 75 feet  
deep course N. N. W.

4000 On West slope of ravine

Set a post 3 ft. long 3 ins. diam with marked  
stone, 12 ins. in the ground for  $\frac{1}{4}$  Sec, Cor,  
marked  $\frac{1}{4}$  S. on W face, dug pits 18 x 18 x 12  
ins. N and S of post 5 $\frac{1}{2}$  ft. dist. and raised  
a mound of earth 1 $\frac{1}{2}$  ft. high. 3 $\frac{1}{2}$  ft. base. around  
post. - Line runs along ravine.

54.00 Right bank of Ravine

68.00 Leave hills enter Sonoma Valley.

80.00 Set a post 4 ft. long 4 ins. square, with marked  
stone, 12 ins. in the ground for Cor. to Secs, 5

6, 7 & 8 marked T. 22 S. S. 5 on  
N. E. R. 16. E. S. 8 on S. E. S, 7 on  
S. W. and S, 6 on N. W. face, with 5 notch  
es on S, and 5 notch es on E. edges, dug  
pits 18 x 18 x 12 ins. in each Sec., 5 $\frac{1}{2}$  ft. dist.  
and raised a mound of earth 2 ft. high. 4 $\frac{1}{2}$  ft.  
base. around post.

## Subdivisions Sp 22.5, R. 16, E.

Che Sand in hills rolling,  
in Valley level. covered  
with grass.

Soil 1<sup>st</sup> and 3<sup>rd</sup> rate.

Timber some few oaks.

18<sup>th</sup> July 1883

X East on a random line  
between Sec 5 and 8  
Var  $12^{\circ} 28' 6''$

In Sonotta Valley -

30.00

Cross main gulch course N.

35.00

Road from Harshaw to

Sonotta Bars. N. W. & S. E.

37.20

Leave Valley and enter hills.

40.00

Set temporary  $\frac{1}{4}$  Sec. cor.

79.60

Intersect the 7 and 5  
line 18 lbs North of the cor  
to Sec 4, 5, 8 & 9.

Thence I run

$72^{\circ} 52' N$  on a true  
line between Sec 5 & 8

## Subdivisions Sp 225. R 15. E.

Ch<sup>5</sup> with same var. -

39.30

Set a post 3 ft. long 3 ins. diam with marked stone, 12 ins, in the ground for  $\frac{1}{4}$  Sec, Cor, marked  $\frac{1}{4}$  S. on W face, dug pits 18 x 18 x 12 ins.  $\text{E}^{\circ}$  and  $\text{W}^{\circ}$  of post  $5\frac{1}{2}$  ft. dist. and raised a mound of earth  $1\frac{1}{2}$  ft. high.  $3\frac{1}{2}$  ft. base. around post. From which -  
 Thomas Steans Dwelling House bears  $\text{N} 74\frac{1}{2}^{\circ} \text{W}$  20 chains distant -  
 a mesquite 6 ins diam bears  $\text{N} 62\frac{1}{2}^{\circ} \text{W}$  243 links dist. marked  $\frac{1}{4}$  S. B. J.  
 no other trees within limits -

79.60

The cor to sec<sup>s</sup> 5, 6, 7 & 8 -  
 Sand in valley level. the balance rough hills -  
 Soil 1<sup>st</sup> & 3<sup>rd</sup> rate -  
 Timber some few oaks and mesquite in hills -

# Subdivisions T<sup>22</sup>S. R. 16. E.

- Che. West on a random line  
 between Secs 6 and 7  
 Var  $12^{\circ} 28' E$ .
- 34.00 Atcheson Topoka and Santa  
 Fe R. Road track bears  
 $77. E.$  and  $S. W.$
- 40.00 Set temporary  $\frac{1}{4}$  sec. cor
- 41.00 Valley Road bears  $NE \& S. W.$
- 75.00 Arroyo 4 feet deep course  $S. W.$
- 79.30 Intersect the West boundary  
 of T<sup>27</sup> N<sup>5</sup> 72 of the cor  
 to Secs 1, 6, 7 and 12 which  
 is a post 3000 square  
 marked T<sup>22</sup>S. R. 16 E 5 6 on NE  
 S. 7 on SE  
 T<sup>22</sup>S. R. 15 E 5 12 on SW  
 and S. 1 on NW  
 faces with 5 notches on  
 S and 1 notch on N. edges  
 set in mound of earth

## Subdivisions 225. R. 16. E.

Ch<sup>s</sup>. with pits - from which -  
 An oak 18 ins diam bears  
 $72 6\frac{1}{2}^{\circ}$  E 348 N<sup>s</sup> distant -  
 marked T 225. R 16 E S. 6  
 B. T.

An oak 10 ins diam bears  
 $57 4\frac{1}{2}^{\circ}$  E 504 N<sup>s</sup> dist:  
 marked T 225. R 16 E S 7  
 B. T.

Hence Iron  
 $N 89^{\circ} 48' E$  on a true  
 line between Secs 6 & 7  
 with same var.

39. 30<sup>a</sup> Set a post 3 ft. long 3 ins. diam with marked  
 stone, 12 ins, in the ground for  $\frac{1}{4}$  Sec, Cor,  
 marked  $\frac{1}{4}$  S. on 72 face, dug pits 18 x 18 x 12  
 ins. E and W of post  $5\frac{1}{2}$  ft. dist. and raised  
 a mound of earth  $1\frac{1}{2}$  ft. high.  $3\frac{1}{2}$  ft. base. around  
 post. From which -  
 Hughes' House bears  $72 52^{\circ}$   
 E 25 chains distant -

## Subdivisions 22 S. R 16 E

che  
79.30 The cor to Secs 5, 6, 7 & 8  
Land level.  
Soil 1<sup>st</sup> rate  
Timber some oaks and  
Cottonwoods on West-  
end of line -

X  
North on a random  
line between Secs 5 & 6.  
Var  $12^{\circ} 28' E$

21.00 Road down valley bears  
SW and N. N. E.

22.20 Atcheson, Topeka and  
Santa Fe R Road track  
bears S. W and N. N. E.  
Leave Sonoita Valley  
and enter rolling grass  
hills -

40.00 Set temporary  $1/4$  Sec. cor:  
79.70 Intersect the T. boundary

## Subdivisions Tp 22 S. R 16 E

Che

of Tp 30 W's East of  
 cor to Secs 5, 6, 31 & 32  
 which is a post 3 in  
 square marked.

T 21 S R 16 E S 32 on N E

S 31 on N. W

T 22 S R 16 E S 6 on S. W and

S 5 on SE faces

with 1 notch on W and  
 5 notches on E edges set  
 in mound of stone  
 with pits -

Thence I run

$50^{\circ}13'E$  on a true line  
 between Secs 5 & 6 with same var.

39.70

Set a post 3 ft. long 3 ins. diam with marked  
 stone, 12 ins, in the ground for  $\frac{1}{4}$  Sec. Cor,  
 marked  $\frac{1}{4}$  S. on W face, dug pits 18 x 18 x 12  
 ins. N and S of post  $5\frac{1}{2}$  ft. dist. and raised  
 a mound of earth  $1\frac{1}{2}$  ft. high  $3\frac{1}{2}$  ft. base around  
 post.

## Subdivisions Sp 225. R 16 &amp;

Chs  
19.70 The cor to Secs 5. 6. 7 & 8  
Land in valley level  
in hills rolling -  
Soil 1<sup>st</sup> & 3<sup>d</sup> rate  
no Timber.

19<sup>th</sup> July 1888



# General Description

This Tp lays almost wholly in a mountainous country - The only portion fitted for stock raising and farming is covered by the n. W and center sections - The Sonora Valley is in the extreme n. W of Tp and contains some fine farming land.

The Atcheson Topoka and Santa Fe R Road passes thro the Sonora Valley -

The only running water I found in the Tp is in Sec 15, it runs for about  $\frac{1}{2}$  mile, irrigating a few acres of land,

General Description Cont<sup>d</sup>

and sinks about  $\frac{1}{4}$  mile  
S. E. of Capps Rancho  
House.

In Secs 3 and 6. Hopkins  
and Fenter have located  
their Stock Ranches.

In Sec 5 Tho Sheant  
in Sec 6 Tho Hughes  
have their Ranches.

The Township is covered  
by scattering Oak, Cedar  
and Mesquite Timber,  
valuable only for fire  
wood and fencing.

There are indications  
of mineral in several  
places in the surveyed  
portion of this Tp, but no  
mines of any great value  
have yet been discovered.

General Description Cons<sup>o</sup>

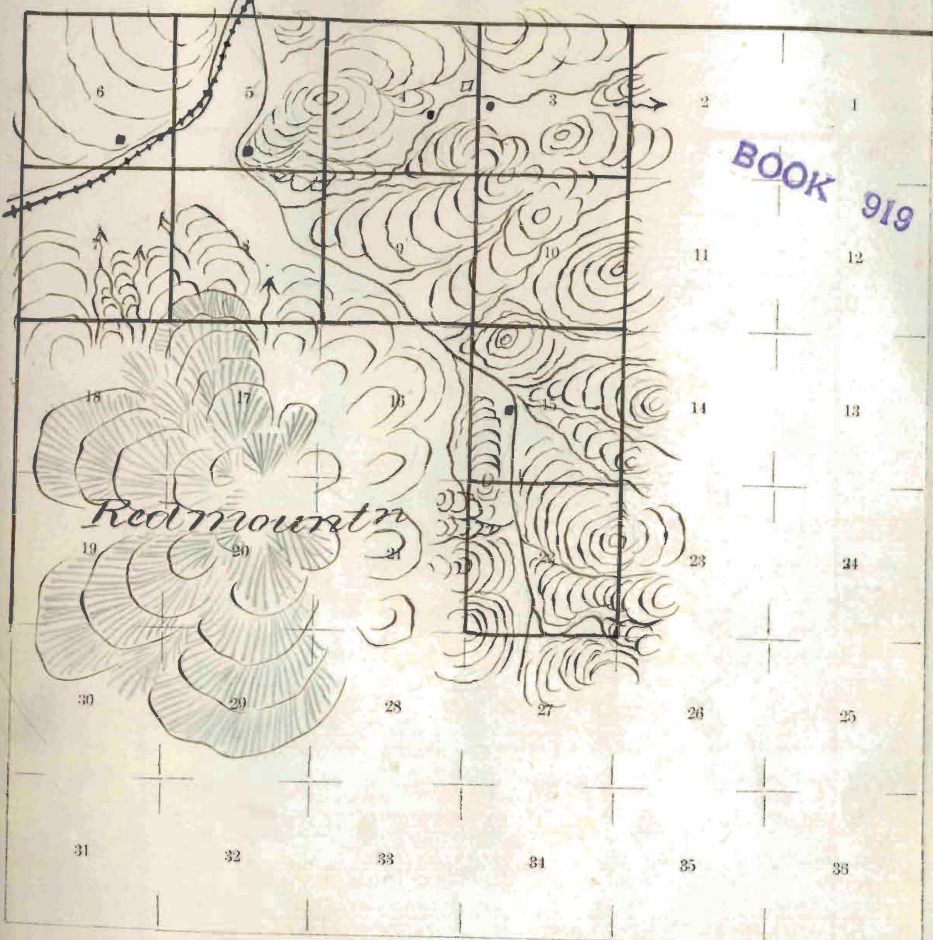
The unsurveyed portions consist of rough hills and mountains - some portions contain mineral, but I could not learn of any mines being worked at the present time.

George J. Rasker  
U.S. Deputy Surveyor

Township 22 South, Range 16 East

55

Gila and Salt River Meridian.



Referring the lines to the pages of the field notes.

Final Oaths for Surveys.

56

LIST OF NAMES.

A List of the Names of Individuals employed by  
J. Roskrueger, U. S. Deputy Surveyor to  
assist in running, measuring and marking the lines and  
boundaries described in the foregoing Field Notes of the survey of  
Subdivision Lines of  
Township  $7^{\circ} 22$  South  
Range  $11^{\circ} 15$  East Gila  
and Salt River meridian.  
Arizona

the principal base and meridian in the Territory of Arizona,  
showing the respective capacities in which they acted.

Thomas Spear - Chairman

J. M. Lewis - Chairman

H. Draz - Assessor

W. C. Proctor - Flagman



Final Oaths of Assistants.

We hereby certify that we assisted George J. Roskrug U. S. Deputy Surveyor, in surveying Subdivision Lines of Township 22° 22 South Range 20° 16 East

of the principal base and meridian in the Territory of Arizona, as are represented in the foregoing field notes as having been surveyed by him and under his direction; and that said Survey has been in all respects, to the best of our knowledge and belief, well and faithfully surveyed, and the corner monuments established according to the instructions furnished by the U. S. Surveyor-General for Arizona.

Wm Shean  
J M Lewis  
J W Droye  
W C Pevetor

Subscribed and sworn to before me this 20<sup>th</sup>  
day of July 1883

George J. Roskrug  
Notary Public.



1 George J. Roskruse

United States Deputy Surveyor, do solemnly swear that in  
pursuance of instructions received from J. W.

Robbieris - U. S. Surveyor General for Ari-  
zona bearing date of the 13<sup>th</sup> day of April

1883 I have well, faithfully, and truly, in my own proper  
person and in strict conformity, with the instructions furnish-  
ed by the U. S. Surveyor General for Arizona, the surveying  
manual and the laws of the United States surveyed the

Subdivision Lines of  
Township No 22 South  
Range No 16 East

of the principal base and meridian in the Territory of Ari-  
zona, as are represented in the foregoing fields notes as having  
been surveyed by me and under my direction; and I do further  
solemnly swear that all the corners of the said survey have been  
established and perpetuated in strict accordance with the survey-  
ing manual, printed instructions, the special written instruc-  
tions of the U. S. Surveyor General for Arizona, and in the

specific manner described in the field notes, and that the foregoing are the true field notes of such survey, and should any fraud be detected I will suffer the penalty of perjury under the provisions of an Act of Congress approved August 8, 1846.

George Rosekrance  
U. S. Deputy Surveyor.

Subscribed and sworn to before me, this 21<sup>st</sup>

day of July 1883.

W. J. Osborn  
Notary Public.





U. S. Surveyor General's Office,  
Tucson, Arizona, *November 7<sup>th</sup>* 1883

The foregoing Field Notes of the Survey of the

*Subdivision Lines of  
Township 22 South  
Range 16 East*

Of the Gila and Salt River Base and Meridian, Arizona, execu-

ted by *George J. Rockruge*

Deputy Surveyor, under his contract of the *13<sup>th</sup>*

day of *April*, 1883 having been

critically examined and the necessary corrections and explana-  
tions made, the said Field Notes and the surveys they describe  
are hereby approved

*J. W. Robinson*  
Surveyor General.