

SUBDIVISIONS  
T 22 S R 22 E  
CONTRACT NO. 57  
PHILIP CONYER  
U.S. DEPT. SUR  
II

984

No. 984

4-671

FIELD NOTES  
GENERAL LAND OFFICE.

10/28/01

*Indexed, Book 983*

Township 235 R. 226

60

6	102	5	79	4	62	3	2	1
101		100		78		61		
7	98	8	77	9		10	11	12
97		96		75				
18	94	17	73	16	15		14	13
93		91		72				
19	90	20	70	21	22		23	24
88		87		69				
30	86	29	68	28	27		26	25
85		84		65				
31	81	32	64	33	34		35	36

Subdivision of Road, Res. Co. Continued  
 Chasms

sq, with marked stuns, 24 ins  
 in the ground, for  $\frac{1}{4}$  sec cor,  
 marked  $\frac{1}{4}$  S 3 on N and S on  
 S faces; dig pits 18 x 18 x 12 ins,  $\frac{1}{4}$   
 and  $\frac{1}{4}$  of west, 3 ft dist, and raise  
 a mound of earth  $3\frac{1}{2}$  ft base,  $1\frac{1}{2}$   
 ft high, N of cor.

47.00 Leave of use undergrowth, bears  
 N W and S E and enter San Pedro  
 valley.

54.72 Road, bears N W and S E

55.00 Wire fence, bears N W and S E

80.00 The cor of secs 3, 4, 9 and 10.

Land, rolling and level  
 Soil, sandy loam and gravelly,  
 $\frac{1}{2}$  and  $\frac{1}{4}$  rate

No timber; undergrowth, mes-  
 quita, tesota and Sagebrush.

Leave undergrowth, 47.00 Chs.

Subdivision of T<sub>23</sub>S, R<sub>22</sub>E - continued

Chains

- No. 00' N, in a random line bet  
secs 3 and 4.
- 40.00 Set trap # 4 sec cor.
- 80.00 Intersect N bdy of the T<sub>10</sub>  
line W of the cor of secs 3, 4, 33  
and 34, as heretofore described.
- Plunger Corn
- 500' N, in a true line bet secs  
3 and 4.
- Over level bottom land.
- Through sacaton and dense weeds.
- 2.70 Slough, bears 1 ch NW
- 4.60 Wire fence, bears E and W
- 9.00 San Pedro river, 2 chs wide, course  
N westerly
- 10.60 Wire fence, bears NW and SE
- 12.00 San Pedro river, 2 chs wide, course  
N easterly.
- 40.22 Set a Redwood post, 3 ft long,

Subdivision of Pos S. Pos E - Continued  
 Charras

4 ms sq, with marked stone, 24  
 ms in the ground, for  $\frac{1}{4}$  sec  
 cor, marked  $\frac{1}{4}$  S 40 W N and S  
 30 N E faces; dig pits 18 x 18 x 12  
 in, N and S of post, 3 ft dist, and  
 raise a mound of earth  $3\frac{1}{2}$  ft  
 base  $1\frac{1}{2}$  ft high, N of cor.

51.00 Small adobe shack, bears 4 chs E

51.70 Wire fence, with willow trees,  
 bears E and W, and enters the  
 rated field.

71.00 Adobe shacks, bears 10 chs E.

80.22 N. cor of secs 3, 4, 9 and 10.

Level, level,

Soil, sandy loam; 1<sup>st</sup> rate.

Timber, a few cottonwood and willows,  
 undergrowth, sacaton and  
 dense weeds

Range undergrowth, 51.80 Chs.

Subdivision of S 23, Sec 2 E - Continued  
 Chronics

October 8, 1901.

October 9, 1901. At 7<sup>h</sup> 30<sup>m</sup> a.m., cont.  
 Set off 31.23' on the lat arc; 2.31' S  
 on the decl arc, and determine  
 a true meridian with the solar  
 at the cor of secs 4, 5, 32 and 33  
 on the S Ely of the Sp, as heret-  
 ofore described.

Plumer Brown

N. 0.00' W, bet secs 32 and 33  
 Over level land.

40.00 Set a redwood post, 8 ft long, 4  
 ins sq, with marked stone, 24  
 ins in the ground, for  $\frac{1}{4}$  sec  
 cor, marked  $\frac{1}{4}$  S 32 on W and  
 S 33 on E edges; dig pits 18 x 18 x 12  
 ins, N and S of post, 3 ft dist,  
 and raise a mound of earth  
 32 ft base, 12 ft high, N of cor.

Indivision of Secs. 28, 29 & continued

Chains

46.22

Read, bears E and N.

8.00

Set a redwood post, 3 ft long, 4  
ins sq, with marked stone, 24  
ins in the ground, for cor of secs  
28, 29, 32 and 33, marked

Sec 28, Sec on N E

Sec 29, Sec on S E

Sec 32 on S W and

Sec 33 on N W face; with 1 notch  
on S end + notches on E edge;  
dig pits 18 x 18 x 2 ins, in each sec,  
52 ft dist, and raise a mound of  
earth 4 ft base, 2 ft high, W  
of cor.

Land, level.

Soil, sandy and gravelly; 2 and  
3<sup>d</sup> rates.

Not in use.

East on a random line bet secs

Submissions of P 23 of Rec E - continued  
 Charris

- 28 and 33.
- 40.00 Set temp 7 see col.
- 80.10 Intersect N and S line at cor of  
 sees 27, 28, 33 and 34.  
 Shiner Run  
 West on a true line bet sees 28  
 and 33.  
 Over level land.
- 2.50 San Pedro river, 2 chs wide,  
 course, N easterly.
- 5.70 Enter tall sycamore, bars NE  
 and SW
- 10.60 Ben Sneed's house, bars 1 ch N,  
 windmill, bars 175 lbs S.
- 12.30 Road, bars NW and SE
- 40.05 Set a redwood post, 3 ft long, 4  
 ins sq, with marked stone, 24  
 ins in the ground, for 1/4 sec  
 Cor, marked 7 S 28 on N and S



Embodiment of Secs 28 & 29 E-Continued  
 Chans

- 33 on S face; dig pits 18x18x12  
 ins, E and W of post, 3 ft dist,  
 and raise a mound of earth  
 3 1/2 ft base, 1 1/2 ft high, N of cor.  
 51.70 Wire fence, bars N and S  
 52.05 Road, bars N and S  
 80.10 N of cor of secs 28, 29, 32 and 33.  
 Land level.

Soil, sandy loam and gravelly;  
 2<sup>d</sup> and 3<sup>d</sup> rate.

No timber; undergrowth, sacaton  
 dense undergrowth, 75.00 chs.

N.0.02 N, bet secs 28 and 29.

Over level land

- 40.00 Set a redwood post, 8 ft long, 4  
 ins sq, with marked stars, 2 # pins in  
 the ground, post 1/4 sec cor, marked  
 1/4 Sec 29 on W and 28 on E face; dig

Subdivision of Sec 8, R22 E - continued  
 Chromis

75.00

80.00

pits 18x18x12 ins. N and S of post,  
 3 ft dist, and raise a mound of  
 earth 3 1/2 ft base, 1 1/2 ft high, NW of  
 cor. Road to Hand's E. and W.

Set a redwood post, 3 ft long, 4 ins  
 sq., with marked stone, 2 1/4 ins in  
 the ground for cor of secs 20, 21,  
 28 and 29, marked

Sec 8, Sec on NE

R22 E, Sec on SE

Sec on SW and

Sec on NW faces, with 2 notches  
 on S and 4 notches on E edges,

dig pits 18x18x12 ins in each sec  
 5 1/2 ft. dist, and raise a mound  
 of earth 4 ft base, 2 ft high,  
 W of cor.

Land, level.

Soil, gravelly; 2<sup>d</sup> and 3<sup>d</sup> rate.

## Subdivision of Sec 28 of R.R. &amp; C. - continued

Plumier  
No timber.

East on a random line bet secs  
21 and 28.

4.00 Set temp & sec cor.

8.10 Intersect N and S line 12 chs S  
of cor of secs 21, 22, 27 and 28.

Thinner Drive

S 89.55 W, on a true line bet secs  
21 and 28.

Over level bottom land.

Through tall sacaton

12.00 Bradford house, brass 2 chs N

13.10 Brass sacaton, brass N and S

13.70 Wire fence, brass N and S

14.40 Road, brass N and S, and brass  
bottom land

35.20 Road, brass NE and SW

40.05 Set a redwood post, 3-ft long 4 ins

Subdivision of Sec 2, T22 S, R22 E - Continued  
Chains

sq. with marked stone, 24 ins in  
the ground for  $\frac{1}{4}$  sec cor, marked  
 $\frac{1}{4}$  Sec. on N and  $\frac{1}{8}$  on S faces; dig  
pits 18x18x12 ins, E and W of post,  
3 ft dist, and raise a mound of  
earth  $3\frac{1}{2}$  ft base, 16 ft high, N  
of cor.

8010 The cor of secs 20, 21, 28 and 29.  
Over level.

Soil, black and sandy loam and  
gravelly; 2<sup>nd</sup> and 3<sup>rd</sup> rate.

No timber; undergrowth, sacaton.  
Dense undergrowth, 13.10 chs.

N.0.0's W bet secs 20 and 21.  
Over level land.

28.93 Wire fence, bars E and W

4.000 Set a iron wood post, 3 ft long, 4  
ins sq. with marked stone, 24

Subdivision of Sec 8, 10, 20 & 30  
 Chronis

ins in the ground, for  $\frac{1}{4}$  sec or  
 marked  $\frac{1}{4}$  S 20 on W and S 1 on  
 E faces; dig pits 18x18x12 ins, N  
 and S of post, 3 ft dist, and  
 raise a mound of earth  $3\frac{1}{2}$  ft  
 base, 1 $\frac{1}{2}$  ft high, W of cor.

8000 Set a redwood post, 3 ft long, 4  
 ins sq, with marked stone, 24 ins  
 in the ground, for cor of secs  
 16, 17, 20 and 21, marked

S 20 S, S 16 on NE

R 22 E, S 1 on SE

S 20 on SW and

S 17 on NW faces; with 3 notches  
 on S and 4 notches on E edges;  
 dig pits 18x18x12 ins in each sec,  
 $3\frac{1}{2}$  ft dist, and raise a mound  
 of earth, 4 ft base, 2 ft high, W  
 of cor.

Subdivision of T<sub>23</sub>S, R<sub>22</sub>E - Continued  
Chains

Land, level.

Soil, sandy and gravelly; 2<sup>nd</sup>  
and 3<sup>rd</sup> rates.

No timber.

October 9, 1901.

October 10, 1901.

N 89° 55' E, on a random line bet  
secs 16 and 21.

4.000 Set temp  $\frac{1}{4}$  sec cor.

80.11 Intersect N and S line 10  
Wes S of cor of secs 15, 16, 21 and  
22.

Thence P<sub>run</sub>

S 89° 57' W, on a true line bet secs  
16 and 21.

Over level bottom land.

Through tall sacaton.

38.00 Leave San Pedro valley and

Subdivision of T 23 S, R 22 E continued  
Chain

sacaton and ascend.

37.00 Top of mesa.

4005 $\frac{1}{2}$  Set a pine post, 3 ft long, 4 ins  
sq, 24 ins in the ground, for  
4 sec cor marked 4 S 16 on N  
and S 21 on S faces; dig pits  
18x18x12 ins, E and W of post,  
3 ft dist, and raise a mound  
of earth 3 $\frac{1}{2}$  ft base, 1 $\frac{1}{2}$  ft high,  
N of cor.

80.11 Three cor of secs 16, 17, 20 and 21.  
Level.

Soil, black loam and sandy;  
1<sup>st</sup> and 2<sup>d</sup> rates.

No timber; undergrowth, sacaton  
Dense undergrowth, 33.00 chs

11000 W, Set secs 16 and 17.  
Over level and gently rolling land.

Subdivision of Sec 3, R 22 E continued  
 Chains

40.00

Set a redwood post, 3 ft long, 4  
 ins sq, with marked stone, 24  
 ins in the ground, for  $\frac{1}{4}$  sec cor,  
 marked  $\frac{1}{4}$  S 17 on W and S 16 on  
 E faces; dig pits 18x18x12 ins, N  
 and S of post, 3 ft dist, and raise  
 a mound of earth 32 ft base, 12  
 ft high, W of cor.

60.00

Enter dense tesota, bears E and W

73.94

Wire fence, bears E and W

80.00

Set a redwood post, 3 ft long, 4  
 ins sq, with marked stone, 24 ins  
 in the ground, for cor of secs 8,  
 9, 16 and 17, marked.

S 23 S, S 9 on NE,

R 22 E, S 16 on SE

S 17 on SW and

S 8 on NW faces, with 4 notches

on S and E edges; dig pits 18x18x12



Subdivision of Sec 9, 10, 15 & 16 - Continued

Chains

in each sec.  
ins, 5  $\frac{1}{2}$  ft dist, and raise a mound of earth 4 ft base, 2 ft high, W of cor.

Land, level and gently rolling  
Soil, sandy and gravelly; 2<sup>d</sup> and 3<sup>d</sup> rate.

No timber; undergrowth, brackish  
Dense undergrowth 14.00 chs.

N 89° 51' E, on a random line bet  
secs 9 and 16.

4.00 Set temp  $\frac{1}{4}$  sec cor.

8.00 8 Post set N and S line 16 lbs N  
of cor of secs 9, 10, 15 and 16.

Thence S, 1000'

S 89° 58' W, on a true line bet secs  
9 and 16.

Over level bottom land.

1.60 Ditch, 5 lbs wide, course, northerly

Subdivision of Sec 3 S, T22 E - continued

- Chains  
1.80 Wire fence, bars N and S.
- 4.20 Slough, 90 lbs wide, course northerly
- 10.80 San Pedro river, 1 ch wide, course northerly.
- 29.90 Wire fence, bars N and S, and  
bar valley, and ascend
- 37.50 Top of mesa.
- 40.04 Set a pine post, 3 ft long, 4 ins  
sq, with marked stone, 4 ins in  
the ground, for 4 sec cor, marked  
4 S 9 on N and S 16 on S face;  
dig pits 18 x 18 x 12 ins, E and W of  
post, 3 ft dist, and raise a mound  
of earth 3 1/2 ft base, 1 1/2 ft high,  
N of cor.
- 80.08 The cor of secs 8, 9, 16 and 17.  
Land, level.  
Soil, black loam, sandy and gravelly,  
see 2<sup>d</sup> and 3<sup>d</sup> notes.

Subdivision of Sec 8, T. 22 S., R. 22 E. - Continued

Chains Not timber; undergrowth, scattering mesquite.

No. 002 W, bet sees 8 and 9.

Over level and gently rolling land.

33.60 Road, bears NE and SW

40.00 Set a redwood post, 3 ft long, 4 ins sq, with marked stone, 24 ins in the ground, for  $\frac{1}{4}$  sec cor, marked  $\frac{1}{4}$  S 8 on W and S 9 on E faces; dig pits 18 x 18 x 12 ins, N and S of post, 3 ft dist, and raise a mound of earth 3 x 3 ft base, 12 ft high, N of cor.

50.00 Set a redwood post, 3 ft long, 4 ins sq, with marked stone, 24 ins in the ground, for cor of sees 4, 5, 8 and 9, marked Sec 8, S 4 on NE

Subdivision of Sec 8, R 22 E - Continued  
 Chain

R 22 E, S 9 on S E

S 8 on S W and

S 5 on NW faces, with 5 notches  
 on S and 4 notches on E edges;  
 dig pits 18 x 18 x 12 ins, in each sec,  
 5 x ft dist, and raise a mound  
 of earth 4 ft high, 2 ft high,  
 W of ev.

Land level and gently rolling.  
 Soil, sandy and gravelly; 2<sup>d</sup> and  
 3<sup>d</sup> rate.

No timber.

N 89.58° E, on a random line bet  
 secs 4 and 9.

4.000 Set temp 4 sec ev.

8.004 Intersect N and S line at ev  
 of secs 3, 4, 9 and 10.

Shaner Penn

## Subdivision of Sec 8, Bear E - continued

- Charis S. 89° 58' W.  
 on a true line bet sees  
 4 and 9.  
 Over level bottom land.  
 3.45 Wire fence, bears N<sup>W</sup> and S<sup>W</sup>  
 18.30 San Pedro river, 1 ch wide, course  
 westerly  
 23.53 Wire fence, bears N<sup>W</sup> and S<sup>E</sup>  
 25.00 Enter dense tesota and mesquite,  
 bears N and S.  
 32.00 Leave San Pedro valley and enter  
 gently rolling land.  
 40.02 Set a redwood post, 3 ft long, 4  
 ins sq, with marked stone, 24  
 ins in the ground, for 4 sec cor.  
 marked 4' S 4 on N and S 9 on S  
 faces; dig pits 18 x 18 x 2 ins, E  
 and W of post, 3 ft dist, and  
 raise a mound of earth 3 x  
 ft base, 1 1/2 ft high, N of cor.

Subdivision of S 23, R 22 & Continued

Chains  
8004 Sh. cor. of secs 4, 5, 8, and 9.  
Land, level and gently rolling.  
Soil, black and sandy loam  
and gravelly; 1<sup>st</sup> and 3<sup>d</sup> rate.  
No timber; undergrowth; *Tsota*  
and mesquite.  
Dense undergrowth, 55.00 chs.

N 02° W, on a random line bet  
secs 4 and 5

4000 Set trap  $\frac{1}{4}$  sec cor.

8012 Intersect N body of the S 1/4 19  
the W of the cor. of secs 4, 5, 8  
and 33, as heretofore described.  
Dense P. m.

S 17° W, on a true line bet secs  
4 and 5.

Over gently rolling land  
through dense *Tsota*.

Subdivision of Secs 1, 2 & 3 - Continued

- 29.12 Chain Wash, 20 lbs wide, course, easterly
- 30.12 Leave dense *tesota*, bears E and W
- 40.12 Set a redwood post, 3 ft long, 4 ins sq, with marked stone, 24 ins in the ground, for  $\frac{1}{4}$  sec cor, marked  $\frac{1}{4}$  S 5 on W and S 4 on E faces; dig pits 18x18x12 ins, N and S of post, 3 ft dist, and raise a mound of earth 3 $\frac{1}{2}$  ft base, 1 $\frac{1}{2}$  ft high, N of cor.
- 47.12 Enter dense *tesota*, bears E and W
- 80.12 The cor of secs 4, 5, 8 and 9  
Land, gently rolling.  
Soil, sandy and gravelly; 2<sup>d</sup> and 3<sup>d</sup> rate.  
No timber; undergrowth, *tesota*  
Dense undergrowth, 37.24 chv.  
October 10, 1901.

October 11, 1901. At 7 $\frac{1}{2}$  45<sup>m</sup>, a m, cont.

Subdivision of S 23 of R 22 E - Continued

Chains

Set off 31' 23" on the lat arc; 2' 54" on the decl arc, and determine at true meridian with the solar at the ev of sres 31 and 32 on the S bdy of the  $\frac{3}{4}$ , as heretofore described.

Runner P. run

N 0.03' W, bet sres 31 and 32.  
Over level land.

- 31.30 Wash, 10 fks wide, course westerly
- 32.27 Road, trans E and W
- 4.000 Set a redwood post, 3 ft long, 4 ins sq, with marked stone, 2 4 7 ins in the ground, for  $\frac{1}{4}$  sec ev, marked  $\frac{1}{4}$  S 31 on W and S 32 on E edges; dig pits 18 x 18 x 12 ins, N and S of post, 3 ft dist, dist, and raise a mound of earth 3 $\frac{1}{2}$  ft base, 1 $\frac{1}{2}$  ft high, W of ev.



Subdivision of T23 S. R22 E - Continued

Chain  
66.79

Road, bears N W and S E

8.000

Set a redwood post, 3 ft long, 4 ins sq, with marked stone, 24 ins in the ground, for cor of secs 29, 30, 31, and 32, marked

S 29 S, S 29 on N E

R 22 E, S 32 on S E

S 31 on S W and

S 30 on N W faces; with 1 notch on S, and 5 notches on E edges; dig pits 18 x 18 x 12 ins, in each sec, 5 1/2 ft dist, and raise a mound of earth 4 ft base, 2 ft high, W of cor.

Land level.

Soil, gravelly, 5<sup>d</sup> rate.

No timber.

East on a random line bet secs

Submission of Sec 23 S. R. 22 E. continued

Chains

29 and 32.

4.00 Set temp  $\frac{1}{4}$  sec cor

8.00 Intersect N and S line at cor  
of secs 28, 29, 32 and 33.

Minor Error

West on a true line bet secs 29  
and 32.

Over level land

4.00 Set a redwood post, 3 ft long, 4 ins  
sq, with marked stone, 24 ins in  
the ground, for  $\frac{1}{4}$  sec cor, marked  
 $\frac{1}{4}$  S 29 on N and S 32 on S face;  
dig pits 18x18x12 ins, E and W of  
post, 3 ft. dist, and raise a mound  
of earth  $3\frac{1}{2}$  ft base,  $1\frac{1}{2}$  ft high,

N. ~~#~~ of cor.

8.00 The cor of secs 29, 30, 31 and 32.  
Land level.

Soil, gravelly; 3<sup>d</sup> rate.

BOOK 984

Submission of Secs 29, 30 &amp; Continued

Chains

No timber.

West on a random line bet secs  
30 and 31.

4.000 Set trap  $\frac{1}{4}$  sec cor

79.44 Intersect W bdy of the Section  
of secs 29, 30, 31 and 32.

Shiner Brun

East on a true line bet secs 30  
and 31.

Over level land.

39.44 Set a redwood post, 3 ft long, 4 ins  
sq, with marked stone, 24 ins in the  
ground, for  $\frac{1}{4}$  sec cor, marked  $\frac{1}{4}$  S  
3 on N and S 31 on S faces, dig pits,  
18 x 18 x 12 ins, E and W of post, 3 ft  
dist, and raise a mound of earth  
3 ft base, 1 1/2 ft high, N of cor.

79.44 The cor of secs 29, 30, 31 and 32.

Subdivisions of Sec 3, T23S, R22E - Continuous

Chains

Land, level.

Soil, sandy and gravelly; 2<sup>d</sup> and 3<sup>d</sup> rates.

No timber

N. 0.03' N, bet sees 29 and 30.

Over rolling land

40.00 Set a redwood post, 3 ft long, 4 ins sq, with marked stone, 24 ins in the ground, for  $\frac{1}{4}$  sec cor, marked  $\frac{1}{4}$  S 30 on W and S 29 on E faces; dig pits 18 x 18 x 12 ins, N and S of post, 3 ft dist, and raise a mound of earth  $3\frac{1}{2}$  ft base,  $1\frac{1}{2}$  ft high, W of cor.

30.00 Set a redwood post, 3 ft long, 4 ins sq, with marked stone, 24 ins in the ground, for cor of sees 19, 20, 29 and 30, marked

## Subdivision of Secs 1, 2, 3, 4, 5, 6 - Continued

Chains

Sec 1, Sec on NE

Sec 2, Sec on SE

Sec 3 on SW and

Sec 4 on NW faces; with 2 notches

on S and 5 notches on E edges;

dipfists 18x18x12 ins, in each sec,

50 ft dist, and raise a mound

of earth 4 ft base, 2 ft high.

W of cor.

Land, level.

Soil, sandy and gravelly; 2<sup>d</sup> and  
3<sup>d</sup> rate.

No timber.

East on a random line bet secs  
20 and 29.

4.000 Set trap 4 sec cor.

8.002 Intersect N and S line a lks S  
of cor of secs 20, 21, 28, and 29.

Subdivision of Sec 1, T22E & R22W

Chains

Shaner Survey

S 89.59' W, on a true line bet sees  
20 and 29.

Over level land.

16,80 Road, cross NW corner SE

4001 Set a redwood post, 3 ft long, 4 ins  
sq, with marked staves, 4 ins in  
the ground, for  $\frac{1}{4}$  sec cor, marked  
 $\frac{1}{4}$  Sec on N and S 29 on S face,  
dig pits 18x18x12 ins, E and W  
of post, 3 ft dist, and raise a  
mound of earth 3 $\frac{1}{2}$  ft base, 1 $\frac{1}{2}$   
ft high, N of cor.

8002 The cor of sees 19, 20, 29 and 30.

Land, level.

Soil, sandy and gravelly; 2<sup>d</sup> and  
3<sup>d</sup> rate.

No timber.

West on a random line bet sees 19

Subdivision of Secs 19, 20, 29 & 30 - continued  
 Chain and 30

- 44.00 Set brass  $\frac{1}{4}$  sec cor.
- 79.32 Intersect N bdy of the Sp at the  
 cor of secs 19, 24, 25 and 30, as  
 heretofore described.  
 Run a Drum  
 East on a true line bet secs 19  
 and 30.  
 Over level land
- 39.39 Set a redwood post, 3 ft long, 4 ins  
 sq, with marked stone, 24 ins in  
 the ground, for  $\frac{1}{4}$  sec cor, marked  
 $\frac{1}{4}$  S 19 on N and S 30 on S faces;  
 dig pits 18x18x12 ins, E and W  
 of post, 3 ft dist, and raise a  
 mound of earth  $3\frac{1}{2}$  ft base,  $1\frac{1}{2}$  ft  
 high, N of cor.
- 79.32 The cor of secs 19, 20, 29, and 30.  
 Land level.

Subdivision of Sec 23, T. 62 S. R. 102 E. - continued

Charris

Soil, sandy and gravelly; 2<sup>d</sup> and 3<sup>d</sup> rate.

No timber.

No. 03 N, bet sees 19 and 20.

Own level land

- 27.45 Road, bars NE and SW
- 30.00 Cor of wire fence, bars 5 chs E.
- 31.50 Road, bars NW and SE.
- 40.00 Set a redwood post, 3 ft long, 4 ins sq, with marked stons, 24 ins in the ground, for  $\frac{1}{4}$  sec cor, marked  $\frac{1}{4}$  Sec on W and SE on E faces; dig pits 18 x 18 x 12 ins, N and S of post, 3 ft dist, and raise a mound of earth 3 $\frac{1}{2}$  ft base, 1 $\frac{1}{2}$  ft high, W of cor.
- 80.00 Set a redwood post, 3 ft long, 4 ins sq, with marked stons, 24



Subdivision of Sec 5, T23S, R22E, Contained  
Chains

4 ins in the ground, for each of secs  
17, 18, 19 and 20, marked

Sec 5, S 17 on NE

R22E, Sec 20 on SE

S 19 on SW end

S 18 on NW faces; with 3 notches  
on S and 5 notches on E edges;

dig pits 18x18x12 ins, in each sec.

8 ft dist, and raise a mound of  
earth 4 ft base, 2 ft high, W  
of cor.

Land, level.

Soil, sandy and gravelly; 2 sand  
3<sup>d</sup> rate.

No timber.

October 11, 1901.

October 12, 1901.

N 89.59' E, on a random line bet

Subdivision of Sec 13, Res E - continued

Chains

- 5930 17 and 20.
- 4000 Set temp  $\frac{1}{4}$  sec cor.
- 8000 Intersect N and S line of this N of cor of sses 16, 17, 20 and 21.  
 Marker Dime  
 West on a true line bet sses 17 and 20.
- Over level land, though scattering mesquite.
- 4000 Set a redwood post, 3 ft long, 4 ins sq, with marked stone, 24 ins in the ground, for  $\frac{1}{4}$  sec cor, marked  $\frac{1}{4}$  S 17 on N and S 20 on S faces; dig pits 18 x 18 x 12 ins E and W of post, 3 ft dist, and raise a mound of earth 3 $\frac{1}{2}$  ft base, 1 $\frac{1}{2}$  ft high, N of cor.
- 6300 To grass scattering mesquite, bears NE and SW
- 6732 Wire fence, bears N and S.

Subdivision of Sec 1, T23 S, R22 E - continued

Chassis  
5.00 The cor of secs 17, 18, 19 and 20.  
Level land.  
Soil, sandy and gravelly; 2<sup>d</sup> and  
3<sup>d</sup> rate.  
No timber; undergrowth, scattering  
mesquites.

Post on a random line bet secs  
18 and 19.

4.00 Set trap 7 sec cor.

79.20 Intersect W body of the 10 chs  
S of the cor of secs 13, 18, 19 and 24.

Flower Drive

S 89.56° E, on a true line bet secs  
18 and 19.

Over level land.

9.60 Road, bears N 1/2 and S E.

39.20 Set a redwood post, 3 ft long, 4  
ins dia, with marked stone, 2 1/2

Submission of S 23 S R 22 E Continued  
Chains

ins in the ground, for  $\frac{1}{4}$  sec cor,  
marked  $\frac{1}{4}$  S 18 on N and S 19 on E  
faces; dig pits 18 x 18 x 12 ins, E and  
W of pits, 3 ft dist, and raise a  
mound of earth  $3\frac{1}{2}$  ft base,  $1\frac{1}{2}$  ft  
high, N of cor.

79.20 The cor of secs 17, 18, 19, and 20.

E and level.

Soil, sandy and gravelly; 2<sup>d</sup> and  
3<sup>d</sup> rate.

No timber.

No. 5 W, bet secs 17 and 18.

Over level land

4000 Set a red wood post, 3 ft long, 4  
ins sq, with marked stave, 2 4  
ins in the ground, for  $\frac{1}{4}$  sec cor,  
marked  $\frac{1}{4}$  S 18 on W and S 17 on E  
faces; dig pits 18 x 18 x 12 ins, N and

Subdivision of S 23 S. R 22 E - continued  
 Chamis

Set post, 3 ft dist, and raise a mound of earth  $5\frac{1}{2}$  ft base,  $1\frac{1}{2}$  ft high, W of cor.

8.000 Set a redwood post, 3 ft long, 4 ins sq, with marked staves, 24 ins in the ground, for cor of secs 7, 8, 14, and 18, marked

R 23 S, S 8 on NE

R 22 E, S 14 on SE

S 18 on SW and

S 7 on NW faces, with 4 notches on S and 5 notches on E edges; dig pits  $18 \times 18 \times 12$  ins, in each sec,  $5\frac{1}{2}$  ft dist, and raise a mound of earth 4 ft base, 2 ft high, W of cor.

Ground, level.

Soil, sandy and gravelly; 2<sup>d</sup> and 3<sup>d</sup> rate.

Subdivision of Sec 8, Box E-Continued

Chains Not timbered.

East on a random line bety sres 8  
and 17.

4000 Set temp  $\frac{1}{4}$  sec cor.

8916 Intersect N and S line  $\frac{1}{4}$  lks N of  
cor of sres 8, 9, 16 and 17.

Thence S 70m

N 89° 58' W, on a true line bet  
sres 8 and 17.

Over level land.

4008 Set a redwood post, 3 ft-long,  
4 ins sq, with marked stone, 24  
ins in the ground, for  $\frac{1}{4}$  sec cor,  
marked  $\frac{1}{4}$  S 8 on N and S 17 on  
S faces; dig pits 18 x 18 x 12 ins, E  
and W of post, 3 ft. dist, and raise  
a mound of earth  $3\frac{1}{2}$  ft. base,  $1\frac{1}{2}$  ft  
high, N of cor.

Subdivision of Sec 5, T22E, R22E continued

- Chain  
4266 Wire fence, bars NW and SE
- 63.10 Wire fence, bars NW and SE
- 80.6 The cor of secs 7, 8, 17 and 18.  
Level land.  
Soil, sandy and gravelly; 2<sup>d</sup> and  
3<sup>d</sup> rate.  
No timber.

- N 89° 56' W, on a random line bet  
secs 7 and 18.
- 14.000 Set camp 4 sec cor.
- 79.14 Intersect W body of Sp 5 lks S of  
cor of secs 7, 12, 13 and 18, as here-  
tofore described.  
Thinner Iron
- S 89° 54' E, on a true line bet  
secs 7 and 18  
Over level land.
- 39.14 Set a redwood post, 3 ft long, 4

Subdivision of Sec 1, T22 S, R22 E - Continued  
Chairs.

in sq, with marked stone, 24 ins  
in the ground, for  $\frac{1}{4}$  sec cor, marked  
 $\frac{1}{4}$  S 7 on N, and S 8 on S faces; dig  
pits, 18 x 18 x 12 ins, E and W of post,  
3 ft dist, and raise a mound of  
earth 3 $\frac{1}{2}$  ft base, 1 $\frac{1}{2}$  ft high, N  
of cor.

79.14 The cor of secs 7, 8, 17, and 18.

Land, level.

Soil, sandy and gravelly; 2<sup>nd</sup> and  
3<sup>rd</sup> rate.

No timber.

N 003 $\frac{1}{2}$  W, bet secs 7 and 8.

Over level and gently rolling land.

40.00 Set a redwood post, 3 ft long, 4  
ins sq, with marked stone, 24  
ins in the ground, for  $\frac{1}{4}$  sec  
cor, marked  $\frac{1}{4}$  S 7 on N, and S 8



Subdivision of Sec 8, Box E - continued

Chairs

on E faces; dig pits 18x18x12 ins,  
N and S of post, 3 ft dist, and  
raise a mound of earth 3 1/2 ft  
base, 1 1/2 ft high, W of cor.

8.00

Set a redwood post, 3 ft long, 4  
ins sq, with marked stem, 24  
ins in the ground, for cor of sec  
5, 6, 7 and 8, marked

Sec 5, S on NE

Box E, S on SE

S 7 on SW, and

S 6 on NW faces, with 5 notches  
on S and E edges; dig pits 18x18x12  
ins in each sec, 5 1/2 ft dist, and  
raise a mound of earth 4 ft  
base, 2 ft high, W of cor.  
Land level.

Soil, sandy and gravelly; 2<sup>d</sup> and  
3<sup>d</sup> rates.

## Subdivision of Sec 5, R22E-Continued

Chains

No timber.

889.58' E on a random line bet  
secs 5 and 8.

4000 Set temp  $\frac{1}{4}$  sec cor.

8018 Put a set N and S line 5 chrs  
S of cor of secs 4, 5, 8 and 9  
Shaner & Gunn

West on a true line bet secs  
5 and 8.

Over level land

4009 Set a reduced post, 3 ft long,  
4 ins sq, with marked stone, 24  
ins in its ground, for  $\frac{1}{4}$  sec cor,  
marked  $\frac{1}{4}$  S 5 on N and S 8 on  
S faces; dig pits 18 x 18 x 12 ins, round  
top post, 3 ft dia, and raise a  
mound of earth 32 ft base, 12 ft  
high, N of cor.

## Subdivision of Sec 8, R22E-Continued

Chassis  
78.92 W on fence, bears  $N 12^{\circ} W$  and  $S$   
 $12^{\circ} E$ .

80.18 S.W. cor of secs 5, 6, 7 and 8.

Level land.

Soil, sandy and gravelly; 22 and  
3 plates.

No timber

$N 89^{\circ} 54' W$ , on a random line bet  
secs 6 and 7.

4:00 Set temp  $\frac{1}{4}$  sec cor

79.07 Intersect. W body of the Sp 10

S of the cor of secs 1, 6, 7, and  
12, as here to fore described.

Runner  $\frac{1}{4}$  run

$S 89^{\circ} 50' E$ , on a true line bet  
secs 6 and 7.

Over level land.

39.07 Set a redwood post, 3 ft long,

Subdivision of Sec 8, Cor. E. Continued  
 Chains

4 ins sq, with marked stons, 2 1/4 ins in the ground for 1/4 sec cor, marked 1/4 S on N, and S 1/4 on S face, dig pits, 18x18x12 ins, E and W of post, 3 ft dist, and raise a mound of earth 3 1/2 ft base, 1 1/2 ft high, N of cor.

79.07 The cor of secs 5, 6, 7 and 8.  
 Land level.

Soil, sandy and gravelly; 2<sup>nd</sup> and 3<sup>rd</sup> rates.

No timber.

No. 03 W on a random line bet secs 5, and 6.

4000 Sat temp 1/4 sec cor.

80.10 Intersect N bay of the Sp  
 20 lbs W of the cor of secs

Subdivision of Sec 3 S. R. 22 E. - Continued

Chains

5, 6, 31 and 32, as heretofore described

Thence E. run

S. 66° W. on a true line bet  
secs 5 and 6.

Over level land.

40.10 Set a redwood post, 8 ft long,  
4 ins sq, with marked stake  
24 ins in the ground, for  $\frac{1}{4}$   
sec cor, marked  $\frac{1}{4}$ , S on W  
and S on E faces; dig pits  
18x18x12 ins, N and S of post,  
8 ft dist, and raise a mound  
of earth 8 ft, base, 16 ft high,  
W of cor.

74.10 Run fence, bear N 12° W and  
S 12° E.

80.10 The cor of secs 5, 6, 7 and 8.

Land, level.

Soil sandy and gravelly;

Subdivision of Sec 23 E, 1622 E - Continued

Chiaus

2<sup>nd</sup> and 3<sup>rd</sup> rate.

No timber.

October 12, 1901.

### General Description.

-0-

The eastern portion of this township is rolling and broken and covered with dense mesquite, trestles, sage brush and grasswood undergrowth. The western portion is level and generally rolling land. The soil of the bottom land along the San Pedro river is rich black and sandy loam, that of the remaining portion of the township is sandy and gravelly, second and third rate, covered with rich and nutritious grasses.

Submission of S 33 S. R 22 E - Continued

Chains

The San Pedro river runs from south to north through the center of the township and has a fair flow of water. The San Pedro valley proper averages half a mile <sup>to 3/4</sup> in width, and in most places is covered with a dense growth of tall sacaton. There is a fine spring at the Herford ranch house in section 21.

Along the river banks are a few cottonwood and willows.

There are a number of settlers in the San Pedro valley, who have made substantial improvements.

The San Rafael del Valle grant extends into the northern central part of the township,

Subdivision of S 23 of Bear E - concluded.

covering secs 4 and 9 and portions of secs  
3, 5, 8, 10, 11, 14, 15, 16 and 17.

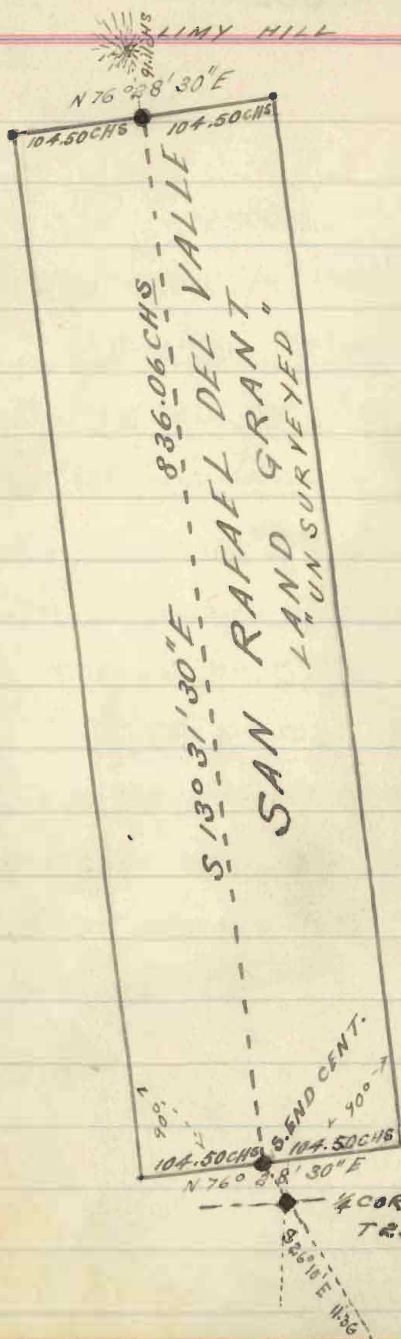
Philip Conzger  
W. S. Deputy Surveyor.

Note: - There having been no official  
survey made of the San Rafael del  
Pelle land grant, I found it necessary  
to run the center line of said grant  
for the purpose of defining the rela-  
tive position of said grant to Sp  
23 S, Bear E.

+



NOTE: — THIS GRANT WAS CONFIRMED BY DECREE OF U. S. LAND COURT AT TUCSON — JUNE 2. — 1899



CONNECTION: — 938.53 CHS.

Oaths in Subdivisions of  
T. 21 S. R. 20 E.

## APPROVAL.

OFFICE OF THE U. S. SURVEYOR GENERAL.

Phoenix, Arizona.

*Relij. 5-1902.*

The foregoing field notes of the survey of Subdivisions of Township  
23 South, Range 22 East,  
 executed by Philip Coutzen,  
 under his contract No. 87 dated Aug. 24  
1901, having critically  
 examined, and the necessary corrections  
 and explanations made, the said field  
 notes, and the surveys they describe,  
 are hereby approved.

*Hugh H. Rice*  
 U.S. Sur. Gen. for Arizona.

5/22/03 -