

1034

S. 13 N., R. 4 W., page 1.  
S. 13 N., R. 5 W., Page 56.

No. 1034

BOOK 1034

Field Notes  
of the Subdivision lines of  
Townships 13 North, Ranges  
4<sup>3</sup> 5 West, of the Gila and  
Salt River Meridian, Arizona

By S. H. Foreman, Dep. Surveyor  
under his contract of October 14, 71

Survey commenced June 8, 1872

Survey completed " 19, 1872

Manuscript sent to Commissioner

March 20, 1872

No. 1034

## Preliminary Oaths of Assistants.

I, \_\_\_\_\_ do solemnly swear that I will well and truly perform the duties of Compassman, according to instructions given me, and to the best of my skill and ability.

Subscribed and sworn to before me, this \_\_\_\_\_ day of  
187

U. S. Deputy Surveyor.

We, Geo. Ellwood and Joseph Fernal

do solemnly swear that we will faithfully execute the duties of Chain Carriers; that we will level the chain upon uneven

ground, and plumb the tally pins, whether by sticking or dropping the same; that we will report the true distance to all notable objects, and the true length of all lines, that we will assist in measuring, to the best of our skill and ability.

George Ellwood  
~~Street~~ Smith  
Joseph Hume

Subscribed and sworn to before me, this 9 day of  
December 1871

~~U. S. Deputy Surveyor.~~

E. W. Wells  
Clerk Dist Court  
5<sup>th</sup> District

We, Fred. Snider & James Baker  
 do solemnly swear that ~~we~~ will well and truly perform the  
 duties of Assessor & Taxgatherer respectively  
 according to instructions given ~~me~~<sup>us</sup>, and to the best of ~~my~~<sup>our</sup>  
 skill and ability.

Fred. Snider  
 James Baker

Subscribed and sworn the be before me, this 9  
 day of December 1871

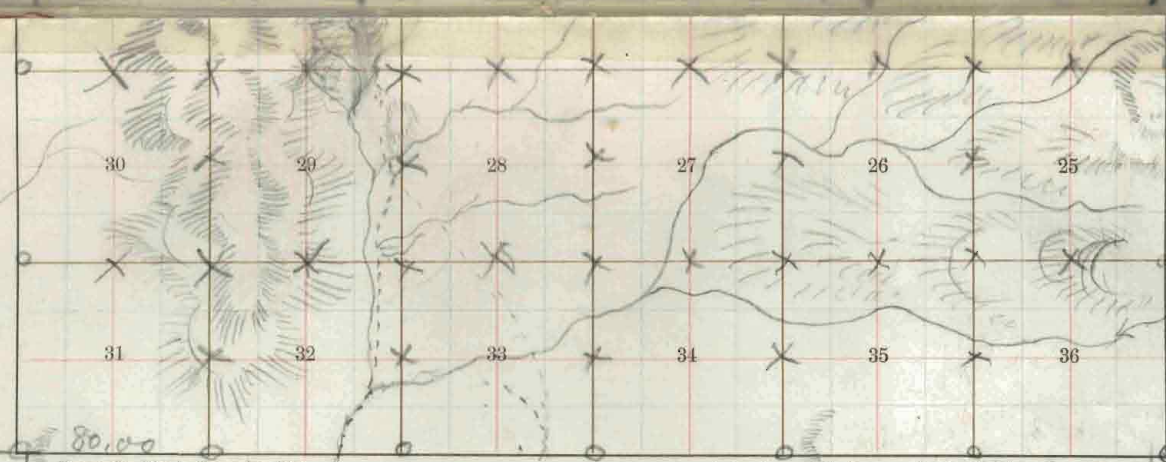
H. J. Deputy Surveyor.

Edw. Wells  
 Clerk Dist Court  
 3<sup>d</sup> Dist at



TOWNSHIP 13-N. RANGE 4 West - MERIDIAN

BOOK 1034



Bancroft's Blank, Township Plot.

A. L. Bancroft & Co., 721 Market St., San Francisco.

- Meridian Line,*
- Base Line,*
- Standard Line,*
- Township Lines,*
- Section Line,*
- Meander Lines,*
- Office Work,*
- Ranch Lines Re-survey*

BOOK 1034

Field Notes  
of the survey of the Subdivision  
Lines of Townships 13 North  
of Ranges 4<sup>th</sup> & 5 West  
Gila and Salt River Meridian  
Arizona Territory

1E

Index for T. 13 N., R. 5 W. on Page 56

BOOK 1034

4-674.

Township **13 N.**, R. **4 W.**, *Secs. 1, 2, 3, 4, 5, 6, 7, 8, 9, 10, 11, 12, 13, 14, 15, 16, 17, 18, 19, 20, 21, 22, 23, 24, 25, 26, 27, 28, 29, 30, 31, 32, 33, 34, 35, 36*

|    |    |    |    |    |    |    |    |    |   |    |
|----|----|----|----|----|----|----|----|----|---|----|
| 6  | 55 | 5  | 39 | 4  | 28 | 3  | 17 | 2  |   | 1  |
| 54 | 53 |    | 38 |    | 27 |    |    |    |   |    |
| 7  | 52 | 8  | 37 | 9  | 26 | 10 | 16 | 11 |   | 12 |
| 51 | 50 |    | 36 |    | 25 |    | 15 |    |   |    |
| 18 | 49 | 17 | 35 | 16 | 24 | 15 | 14 | 14 | 7 | 13 |
| 48 | 47 |    | 34 |    | 23 |    | 13 |    |   | 6  |
| 19 | 46 | 20 | 33 | 21 | 22 | 22 | 12 | 23 | 5 | 24 |
| 45 | 44 |    | 32 |    | 21 |    | 11 |    |   | 4  |
| 30 | 43 | 29 | 31 | 28 | 20 | 27 | 10 | 26 | 3 | 25 |
| 42 | 41 |    | 30 |    | 19 |    | 9  |    |   | 2  |
| 31 | 40 | 32 | 29 | 33 | 18 | 34 | 8  | 35 | 1 | 36 |

Township 13 North Range 4 West.

61a<sup>40</sup> Salt River Meridian

his Pegue on the S. boundary  
line at the cor. to sections  
35<sup>40</sup> & 36. and run thence  
North between secs. 35<sup>40</sup> & 36.  
var. 13° 11' East  
(as per East boundary line)

40.00 Set a <sup>1</sup>/<sub>4</sub> sec. cor. stone 18 x 12  
x 6 in. as per instructions  
No trees near.

46.40 Deep dry ravine runs N.  
50.00 Set a stone 16 x 10 x 6 in. as  
per instructions for the cor.  
to secs. 25, 26, 35<sup>40</sup> & 36.  
No trees near.

Land broken foot hills  
Dirt 2<sup>d</sup> rate.  
No timber.



Township 13 North, Range 4 West.  
 Gila and Salt River Meridian

Ch East, on a random line bet. sec.  
 25<sup>th</sup> & 36.

var. 13°47' East

40.00 Set a temporary 1/4 sec. cor. post.

80.20 Intersect the E. boundary line  
 15 links N. from the cor. to sec.  
 25, 36. 30<sup>th</sup> & 31, from which  
 cor. I run -

N. 89°54' W. on true line bet. sec.  
 25<sup>th</sup> & 36.

var. 13°47' East

40.10 Set a 1/4 sec. cor. stone 14 x 10  
 x 8 in. as per instructions.

No trees near.

80.20 The cor. to sec.

25, 26, 35<sup>th</sup> & 36.

Land broken part hills

Soil 2<sup>nd</sup> rate

No timber.

Township 13 North, Range 4 West  
 Gila and Salt River Meridian

1/2 North, between secs 25<sup>th</sup> & 26.  
 var. 13° 47' East

26.00 Deep ravine, runs N.

40.00 Set a 1/4 sec. cor. stone 14 x 12  
 x 6 in. as per instructions  
 No trees near.

60.30 Deep ravine runs S. N.

80.00 Set a stone 14 x 10 x 10 in. as  
 per instructions for the cor.  
 to sections

23, 24, 25<sup>th</sup> & 26.

No trees near.

Land broken part hills.

Coil 2<sup>nd</sup> rate.

No timber.

Township 13 North. Range 4 West.  
 Gila and Salt River Meridian

R<sub>s</sub> East. on random line bet. secs  
 24<sup>qu</sup> & 25.

var. 13°47' East

40.00 Set a temporary  $\frac{1}{4}$  sec. cor. post.

47.60 Deep Gulch runs S. W.

60.00 Steep ascent bears N<sup>qu</sup> & S.

80.14 Intersect the E. boundary line  
 at the cor. to secs 24, 25.

19<sup>qu</sup> & 30. from which cor. Run  
 West. on true line bet. secs 24<sup>qu</sup> & 25

var. 13°47' East.

10.07 Set a  $\frac{1}{4}$  sec. cor. stone 16 x 10  
 x 6 in. as per instructions

No trees near.

80.14 The cor. to secs

23, 24, 25<sup>qu</sup> & 26.

Land broken N. slope of  
 Antes mountain.

Soil 3<sup>rd</sup> rate.

No timber.

Township 13 North, Range 4 West  
 Gila and Salt River Meridian

No North, between sec. 23<sup>rd</sup> & 24<sup>th</sup>.  
 var. 13° 47' East

40.00 Set a 44 sec. cor. stone 16 x 10 x  
 4 in. as per instructions  
 No trees near.

58.11 Deep ravine runs N.

80.00 Set a stone 14 x 12 x 10 in  
 as per instructions for the  
 cor. to sections

13.14. 23<sup>rd</sup> & 24<sup>th</sup>.

No trees near.

Land broken part hills  
 Soil 2<sup>nd</sup> rate.  
 No timber.

Township 13 North, Range 4 West  
Gla<sup>and</sup> Salt River Meridian

R<sup>1</sup> East, on random line bet. secs  
13<sup>and</sup> 24.

var. 13° 47' East

40.00 Set a temporary 1st sec. cor. post.

80.00 Intersect the E. boundary  
line 13 links N. from the cor.  
to secs. 13, 24, 18<sup>and</sup> 19, from  
which cor. I run —

N. 89° 54' N. on true line bet. secs.

13<sup>and</sup> 24.

var. 13° 47' East

40.00 Set a 4 sec. cor. stone 16 x 10  
x 10 inches as per instructions

No trees near.

80.00 The cor. to secs.

13, 14, 23<sup>and</sup> 24.

Land broken foot hills

Soil 3<sup>rd</sup> rate.

No timber.

Township 13 North Range 4 West  
 T14 Salt River Meridian

Rs North, bet. secs. 13<sup>q</sup> & 14.  
 var. 13° 47' East

18.50 Deep ravine runs N.

40.00 Set a 1/4 sec. cor. stone 16 x  
 12 x 12 in. as per instructions  
 No trees near.

60.00 Ascent becomes steep and  
 difficult, sloping S. N.

80.00 Set a stone 20 x 10 x 10 in. as  
 per instructions for the cor.  
 to secs 11. 12. 13<sup>q</sup> & 14.

No trees near  
 Land steep and rough  
 W. slope of mountain.  
 Soil poor. No timber.

And from this point it  
 is impracticable to extend  
 the lines East or North  
 on account of abrupt

mountains. Date July 8<sup>th</sup> 1872

Township 13 North, Range 4 W.

Gila and Salt River Meridian

No North, bet. sec. 34<sup>th</sup> & 35<sup>th</sup>  
var. 13° 4' N East.

40.00 Set a 4 sec. cor. stone 14 x  
10 x 6 in. as per instructions  
No trees near.

36.80 Supraorum runs N.

80.00 Set a stone 14 x 14 x 10 in.  
as per instructions for the  
cor. to sections  
26.2<sup>nd</sup> of 34<sup>th</sup> & 35<sup>th</sup>.

No trees near.

Land rolling foot hills  
Soil 2<sup>nd</sup> rate.  
No timber.

Township 13 North, Range 4W.  
Gila Salt River Meridian

No East. meridian line bet. secs  
26.  $\frac{3}{4}$  35.

var.  $13^{\circ}47'$  East

40.00 Set a true  $\frac{1}{4}$  sec. cor. post

80.00 Intersect the N.  $\frac{3}{4}$  S. Line at  
the cor. to secs. 25. 26.

35  $\frac{3}{4}$  36. from which cor. I run.

West. true line bet. secs

26  $\frac{3}{4}$  35.

var.  $13^{\circ}47'$  East

40.00 Set a  $\frac{1}{4}$  sec. cor. stone  $12 \times 12 \times$   
10 in. as per instructions.

No trees near.

80.00 The cor. to secs

26. 27. 34  $\frac{3}{4}$  35.

Land rolling foot hills

Soil 2<sup>nd</sup> rate.

No timber.



Township 13 North. Range 45 W.  
 Gila & Salt River Meridian  
 T<sub>13</sub> North

between sec. 26<sup>th</sup> & 27<sup>th</sup>  
 var. 13' 14" East

40.00 Set a  $\frac{1}{2}$  sec. cor. post in a  
 mound <sup>and</sup> pits as per instruction.  
 No trees near.

53.40 Deep dry gulch runs W.

80.00 Set a stone 16 x 12 x 12 in.  
 as per instructions for the  
 cor. to sec.

22. 23. 26<sup>th</sup> & 27<sup>th</sup>.

No trees near.

Land broken foot hills  
 Coib 2<sup>nd</sup> rate  
 No timber.

Township 13 N. Range 4 N.  
Gila <sup>and</sup> Salt River Meridian

As East on a random line bet. secs.  
23 <sup>and</sup> 26.

var.  $13^{\circ}47'$  East.

40.00 Set a temporary  $\frac{1}{4}$  sec. cor. post.

42.50 Ravine runs S. N.

80.17 Intuseck the N. <sup>and</sup> S. Line at  
the cor. to secs. 23, 24, 25  
<sup>and</sup> 26, from which cor. I run  
West. on true line bet. secs.  
23 <sup>and</sup> 26.

var.  $13^{\circ}47'$  East.

40.08 Set a  $\frac{1}{4}$  sec. cor. stone  $12 \times$   
 $10 \times 10$  in. as per instructions

No trees near

80.17 The cor. to secs

22, 23, 26 <sup>and</sup> 27

Land broken part hills

Soil 2<sup>d</sup> rate.

No timber.

Township 13 North Range 4 N.  
 T14 S Salt River Meridian

Co North, bet. secs 22<sup>nd</sup> & 23<sup>rd</sup>  
 var. 13° 47' East

40.00 Set a 1/4 sec. cor. post in a  
 mound with pits as per  
 instructions

No trees near.

59.60 Deep gulch runs S. N.

80.00 Set a stone 14 x 10 x 8 in.  
 as per instructions for the  
 cor. to secs.

14. 15. 22<sup>nd</sup> & 23<sup>rd</sup>.

No trees near.

Land rolling broken  
 foot hills.

Soil 2<sup>nd</sup> rate. No timber.

Township 13 North. Range 4 N.  
Tela <sup>and</sup> Salt River Meridian

East. on random line bet. secs  
14 <sup>and</sup> 23.

var. 13° 47' East.

29.50 Deep ravine runs S. N.

40.00 Set a temporary  $\frac{1}{4}$  sec. cor. post.

80.18 Intersect the N. <sup>and</sup> S. Line 15  
mils S. from the cor. to secs  
13, 14, 23 <sup>and</sup> 24. from which  
cor. I run

S. 89° 54' N. on true line bet. secs  
14 <sup>and</sup> 23.

var. 13° 47' East.

40.09 Set a  $\frac{1}{4}$  sec. cor. stone 14 x 10  
x 6 in as per instructions

80.18 The cor. to secs 14, 15, 22  
<sup>and</sup> 23.

Sand broken foot hills  
Soil 2<sup>d</sup> rate.

No timber.

Township 13 North. Range 4W.  
 T4<sup>th</sup> & Salt River Meridian  
 T3<sup>rd</sup> North.

bet. secs. 14<sup>th</sup> & 15<sup>th</sup>

var. 13° 24' 7" East.

36.00 Ravine runs S. W.

40.00 Set a 14 sec. cor. stone 16  
 x 10 x 8 in. as per instructions  
 No trees near.

80.00 Set a stone 18 x 10 x 10 in  
 as per instructions for the  
 cor. to sections

10.11.14<sup>th</sup> & 15<sup>th</sup>

No trees near.

Land broken foot hills.  
 Soil 2<sup>nd</sup> rate.  
 No timber.

Township 13 North. Range 4 W.  
Gila & Salt River Meridian

To East. on random line bet. secs.  
11 <sup>and</sup> 14.

var. 13° 24' 7" East.

40.00 Set a temporary 1/4 sec. cor post.

80.22 Intersect the N. <sup>to</sup> S. Line at  
the cor. to secs. 11. 12. 13 <sup>and</sup> 14  
from which cor. I run -

West. on true line bet. secs 11 & 14

var. 13° 24' 7" East

40.11 Set a 1/4 sec. cor. stone 15 x 10  
x 5 in. as per instructions.

No trees near

80.22 The cor. to secs

10. 11. 14 <sup>and</sup> 15

Land steep rough N. slope  
of mountain.

Coib poor.

No timber.

Township 13 North Range 4th.  
 6th Salt River Meridian

North. bet. secs. 10<sup>and</sup> 11  
 var. 13° 14' East

21.70 Deep ravine runs N.

40.00 Set a '4 sec. cor. stone 16x12  
 x 5 in. as per instructions  
 No trees near

50.00 Deep gulch runs S. N.

80.00 Set a stone 14x12x12 in  
 as per instructions for the  
 cor. to secs.

2, 3, 10<sup>and</sup> 11.

No trees near.

Land broken hills

Coil pass No timber

The line between secs. 2<sup>and</sup> 11  
 is impracticable on account  
 of steep bluffs and the  
 land is worthless.

Township 13 North. Range 4 W.  
Gila Salt River Meridian

40.00 North. on random line bet. secs.  
2<sup>nd</sup> & 3.

var. 13° 47' East

40.00 Set a temporary 1/4 sec. cor. post

80.30 Intersect the N. boundary  
line 23 links N. from the  
cor. to secs 2, 3, 34<sup>th</sup> & 35,  
from which cor. draw.

S. 0° 10' N. on true line bet. secs

2<sup>nd</sup> & 3.

var. 13° 47' East

40.30 Set a 1/4 sec. cor. stone 16 x 10  
x 8 in. as per instructions

No trees near.

80.30 The cor. to secs. 2, 3, 10<sup>th</sup> & 11.

Land broken hills.

Soil poor. No timber.

Date July 9<sup>th</sup> 1872



Township 13 North. Range 4 N.  
 Gila & Salt River Meridian  
 S. 1/2 North.

bet. secs. 33 & 34.

var. 13° 47' East.

40.00 Set a 1/4 sec. cor. post in  
 a mound and pits as  
 per instructions.

No trees near.

60.00 Dry creek 20 links wide  
 runs West.

80.00 Set a stone 14 x 10 x 6 in.  
 as per instructions for the  
 cor. to secs.

27. 28. 33 & 34.

No trees near.

Land rolling.

Soil 2<sup>nd</sup> rate.

No timber.

Township 13 North Range 4 W.  
 Tila <sup>4</sup>/<sub>4</sub> Salt River Meridian

No East. on a random line bet. secs  
 2<sup>7</sup>/<sub>4</sub> <sup>4</sup>/<sub>4</sub> 34.

var. 13° 47' East

31.20 Deep ravine 20 feet wide runs S.W.

40.00 Set a temporary <sup>1</sup>/<sub>4</sub> sec. cor. post.

80.14 Intersect the N. <sup>4</sup>/<sub>4</sub> S. Line at  
 the cor. to secs. 26. 2<sup>7</sup>/<sub>4</sub>. 34 <sup>4</sup>/<sub>4</sub>

35. from which cor. I run  
 N East. on true line bet. secs

2<sup>7</sup>/<sub>4</sub> <sup>4</sup>/<sub>4</sub> 34

var. 13° 47' East

40.07 Set a <sup>1</sup>/<sub>4</sub> sec. cor. post. in a marked  
 and pits as per instructions

80.14 No trees near  
 the cor. to secs

2<sup>7</sup>/<sub>4</sub>. 28. 33 <sup>4</sup>/<sub>4</sub> 34.

Land rolling hills -

Cost 2<sup>d</sup> rate.

No timber.

Township 13 North, Range 4 N.  
 Gila and Salt River Meridian

21.22.2 N. North. bet. secs. 27 & 28

var.  $13^{\circ} 47'$  East

23.00 Ravine runs N.

40.00 Set a  $\frac{1}{4}$  sec. cor. post in  
 mound and pits as per  
 instructions

No trees near.

61.00 Ravine runs S. N.

80.00 Set a post in a mound and  
 pits as per instructions for  
 the cor. to secs.

21.22.2 N.  $13^{\circ} 47'$  East. No trees near

Land rolling.

Soil 2<sup>nd</sup> rate.

No timber.

Township 13 North. Range 4 W.

Gila <sup>and</sup> Salt River Meridian

No East. on random line bet. secs.

22 <sup>and</sup> 27.

var.  $13^{\circ} 47'$  East.

40.00 Set a temporary  $\frac{1}{4}$  sec. cor. post.

80.00 Substruck the N. <sup>and</sup> S. Line 10

links N. from the cor. to sec

22, 23, 26 <sup>and</sup> 27, from which

cor. from

N.  $89^{\circ} 56'$  N. on true line bet. sec

22 <sup>and</sup> 27.

var.  $13^{\circ} 47'$  East.

40.00 Set a  $\frac{1}{4}$  sec. cor. post in a mound and pits as per instruction.

80.00 ~~No~~ No trees near the cor. to sec.

21, 22, 27 <sup>and</sup> 28.

Land rolling

Soil 2<sup>nd</sup> rate.

No timber.

Township 13 North. Range 4 West  
 Gila <sup>and</sup> Salt River Meridian  
 T<sub>4</sub> North.

bet. secs 21<sup>1/2</sup> & 22.

var. 13° 47' East.

40.00 Set a 1/4 sec. cor. stone 14 x  
 10 x 8 in. as per instructions.  
 No trees near.

57.50 Dry creek 20 links wide runs N.

80.00 Set a stone 14 x 10 x 10 in. as  
 per instructions for the cor.  
 to secs.

15.16. 21<sup>1/2</sup> & 22.

No trees near.

Land rolling

Corb 2<sup>1/2</sup> rods.

No timber.

Township 13 North, Range 4 W.

Gila & Salt River Meridian

No East. or random line bet. secs.  
15<sup>th</sup> & 22.

var. 13° 47' East

30.00 Ravine runs S. W.

40.00 Set a temporary 1/4 sec. cor. post.

45.00 Steep ascent bears N. & S.

80.12 Intersect the N. & S. Line  
at the cor. to sections 14, 15  
22<sup>nd</sup> & 23. from which cor. I run  
West. on true line bet. secs 15<sup>th</sup> & 22

var. 13° 47' East

40.06 Set a 1/4 sec. cor. post in a  
mound and pit as per instructions  
of No trees near.

80.12 The cor. to sections  
15, 16, 21<sup>st</sup> & 22.

Land rolling

Soil 2<sup>nd</sup> rate.

No timber.

Township 13 North Range 4 W.

Gila and Salt River Meridian

1/4 North between secs 15 <sup>3</sup>/<sub>4</sub> 16.  
var. 13° 47' East.

17.00 Dry ravine runs N. W.

40.00 Set a 1/4 sec. cor. stone 10 x  
10 x 10 in. as per instructions  
No trees near.

47.20 Dry creek 20 links wide, and  
runs S. W.

80.00 Set a stone 16 x 10 x 10 in as  
per instructions for the  
cor. to sections  
9. 10. 15 <sup>3</sup>/<sub>4</sub> 16.

No trees near.

Land rolling.

Orb 2<sup>nd</sup> rate.

No timber.

Township 13 North. Range 4 West  
 6th & Salt River Meridian

To East. on random line bet. sees  
 10 & 15.

var 13°47' East

- 25.00 Dry gulch runs S. N.
- 40.00 Set a temporary 1/4 sec. cor. post
- 80.10 Intersect the N. & S. Line 1/4  
 links S. from the cor. to sees  
 10, 11, 12 & 15. from which  
 cor. I run.  
 S. 89°54' N. on true line bet. sees  
 10 & 15.

var 13°47' East

- 40.05 Set a 1/4 sec. cor. post in a  
 mound and pit as per instructions  
 No trees near.

- 80.10 The cor. to sees  
 9, 10, 15 & 16.

Land rolling hills  
 Soil 2<sup>d</sup> rate.  
 No timber.



Township 13 North, Range 4 N  
 T13N R4E Salt River Meridian

Sec 14 North, between secs. 9 & 10  
 var 13' 4" East

40.00 Set a 1/4 sec. cor. post in a  
 mound and pits as per in-  
 structions.

80.00 Set a stone 16 x 10 x 10 in.  
 as per instructions for the  
 cor. to sections

3. 4. 9 & 10.

No trees near.

Land rolling.

Soil 2<sup>nd</sup> rate.

No timber.

Township 13 North. Range 4 W.  
 6th Salt River Meridian

Set East. on random line bet. secs.  
 3<sup>rd</sup> & 10.

var.  $13^{\circ}47'$  East.

40.00 Set a temporary  $\frac{1}{4}$  sec. cor. post

80.18 Intersect the N. & S. Line 11  
 links N. from the cor. to secs.  
 2, 3, 10<sup>th</sup> & 11, from which cor.

Run -

N.  $89^{\circ}55'$  W. on true line bet. secs  
 3<sup>rd</sup> & 10.

var.  $13^{\circ}47'$  East

40.09 Set a  $\frac{1}{4}$  sec. cor. post in a  
 mound and pits as per in-  
 structions

80.18 No trees near  
 the cor. to secs. 3, 4, 9<sup>th</sup> & 10.

Land rolling hills

Soil 2<sup>nd</sup> rate.

No timber.

Township 13 North, Range 4 W.  
Gila Salt River Meridian

Rs North on a random line bet. secs  
3<sup>q</sup> 4.

var.  $13^{\circ}47'$  East

40.00 Set a temporary  $\frac{1}{4}$  sec. cor. post.

80.20 Intersect the N. boundary line  
at the cor. to secs. 3, 4. 33

$\frac{3}{4}$  34. from which cor. I run  
South. on true line bet. secs  
3<sup>q</sup> 4.

var.  $13^{\circ}47'$  East

40.20 Set a  $\frac{1}{4}$  sec. cor. stone  $1\frac{1}{2} \times$   
 $10 \times 6$  in. as per instructions

of No trees near  
80.20 the cor. to secs

3, 4, 9<sup>q</sup>, 10.

Land rolling

Orib 2<sup>d</sup> rate.

No timber.

Done Jan 10 "1872

Township 13 North. Range 4 W.

Gila and Salt River Meridian

No North bet. secs 32<sup>nd</sup> & 33<sup>rd</sup>  
var. 13° 47' East

32.00 Dig arroyo runs S. W.

40.00 Set a stone 16 x 10 x 8 in. as  
per instruction for <sup>1</sup>/<sub>4</sub> sec. cor  
No trees near.

42.00 Enter lead bottom lands  
bear N. E. <sup>9</sup>/<sub>10</sub> S. W.

80.00 Set a stone 18 x 16 x 6 in. as  
per instructions for the cor  
to secs. 28, 29, 32<sup>nd</sup> & 33.  
on S. bank of arroyo runs S. W.  
No trees near

Land rolling.

Soil 2<sup>nd</sup> rate.

No timber.

1830

Township 13 North, Range 4 W.

Gda <sup>4</sup>/<sub>4</sub>: Salt River Meridian

As East, on random line bet. secs  
28 <sup>9</sup>/<sub>4</sub> 33.

var. 13° 41' East

40.00 Set a temporary <sup>1</sup>/<sub>4</sub> sec. cor. post.

80.00 Subsect the N. <sup>9</sup>/<sub>4</sub> S. Line of  
links S. from the cor. to secs  
27, 28, 33 <sup>9</sup>/<sub>4</sub> 34. from which  
cor. run -

S. 89° 57' N. on true line bet. secs  
28 <sup>9</sup>/<sub>4</sub> 33.

var. 13° 41' East

40.00 Set a <sup>1</sup>/<sub>4</sub> sec. cor. post in a  
mound and pits as per in-  
structions.

No trees near.

80.00 The cor. to secs.

28, 29, 32 <sup>9</sup>/<sub>4</sub> 33.

Land rolling.

Soil 2<sup>nd</sup> rate. No timber.

Township 13 North. Range 4 N.  
Tila <sup>and</sup> Salt River Meridian

No North. bet. secs. 28<sup>th</sup> & 29.  
var. 13° 47' East

1.00 Improve ruins S.W.

36.00 Leave bottom land bears N.W. <sup>to</sup> S.E.

40.00 Set a <sup>1/4</sup> sec. cor. stone 16 x 12  
x 8 in. as per instructions  
No trees near.

80.00 Set a stone 18 x 8 x 8 in. as per  
instructions for the cor. to secs  
20, 21, 28<sup>th</sup> & 29.  
No trees near.

Land rolling  
Civil 1<sup>st</sup> <sup>and</sup> 2<sup>nd</sup> rate.  
No timber.

32

Township 13 North, Range 4 West  
Gila and Salt River Meridian

Sec East. on a random line bet. secs  
21  $\frac{3}{4}$  28.

var.  $13^{\circ}47'$  East

40.00 Set a con. 1/4 sec. cor. post

58.00 Range runs S. W.

80.10 Intersect the N.  $\frac{3}{4}$  S. line at  
the cor. to secs. 21. 22. 27

$\frac{3}{4}$  28. from which cor. I run -  
N. E.  $\frac{1}{4}$  on true line bet. secs 21  $\frac{3}{4}$  28.

var.  $13^{\circ}47'$  East

40.05 Set a 1/4 sec. cor. post in a  
mound  $\frac{3}{4}$  pits as per in-  
structions.

No trees near.

80.10 The cor. to secs

20. 21. 28  $\frac{3}{4}$  29.

Land rolling.

Orbit 2" rate.

No timber.

Township 13 North. Range 4 W.  
 Gila and Salt River Meridian

No North bet. secs 20  $\frac{3}{4}$  21  
 var. 13' 47" East

40.00 Set a  $\frac{1}{2}$  sec. cor. stone 14  
 $\times$  10  $\times$  4 in. in a mound  
 and pits, as per instructions  
 No trees near.

80.00 Set a stone 16  $\times$  10  $\times$  6 in. in  
 a mound and pits as per  
 instructions for the cor.  
 to secs.

16.17  $\frac{1}{4}$ . 20  $\frac{3}{4}$  21.

No trees near.

Bowers House bears S. 45° N.  
 about 15 chains distant.

Land rolling.

Soil 1<sup>st</sup>  $\frac{1}{4}$  2<sup>o</sup> rate.

No timber.



Township 13 North, Range 4<sup>th</sup> W

6<sup>th</sup> Sec Salt River Meridian

to East. on a random line bet. secs

16<sup>th</sup> & 21.

var. 13' 47" East

40.00 Set a tem. 1/4 sec. cor. post.

80.00 Intersub the N. & S. Line at

the cor. to secs 15, 16, 21

22, from which cor I run

West. on true line bet. secs

16<sup>th</sup> & 21.

var. 13' 47" East

40.00 Set a 1/4 sec. cor. stone 12" x 10"

x 10 in. as per instructions

No trees near.

80.00 The cor. to secs

16, 17, 20<sup>th</sup> & 21.

Land rolling.

Soil 1<sup>st</sup> rate.

No timber

Township 13 North. Range 4 N.  
Gila and Salt River Meridian

Chs North. bet. secs. 16<sup>th</sup> & 17<sup>th</sup>

var. 13' 47" East

25.00 Road bears N. E.  $\frac{3}{4}$  S. N.

40.00 Set a 4 sec. cor. stone 16 x  
10 x 8 in. as per instructions

No trees near.

53.00 Road bears N. N.  $\frac{1}{2}$  S. E.

60.00 House 5 chs. N. of line

62.00 Same road bears N. E.  $\frac{3}{4}$  S. N.

62.50 Enter cornfield.

80.00 Set a stone 14 x 14 x 14 in.  
in mound and pits as per  
instructions for the cor to  
secs. 8, 9, 16<sup>th</sup> & 17<sup>th</sup>.

No trees near.

Land lead.

Soil 1<sup>st</sup> rate

No timber

Township 13 North, Range 41 W  
Gila and Salt River Meridian

Sec. East. on random line bet. secs.  
9<sup>1/4</sup> 16.

var. 13° 47' East

9.00 Leave cornfield bears N. <sup>3</sup>/<sub>4</sub> S.

10.00 Road bears N. <sup>3</sup>/<sub>4</sub> S.

13.00 Part of same road bears N. <sup>3</sup>/<sub>4</sub> S.

20.00 Enter rolling land

40.00 Set a <sup>1</sup>/<sub>4</sub> sec. cor. post.

40.15 Intouch the N. <sup>3</sup>/<sub>4</sub> S. Line at the  
cor. to secs. 9, 10, 15 <sup>3</sup>/<sub>4</sub> 16 from  
which cor. run

West. on true line bet. secs 9<sup>1/4</sup> 16

var. 13° 11' East

40.07 Set a <sup>1</sup>/<sub>4</sub> sec. cor. stone 18 x 10  
x 10 in. as per. instructions

No trees near

40.15 The cor. to secs. 8, 9, 16 <sup>3</sup>/<sub>4</sub> 17.

Land level <sup>3</sup>/<sub>4</sub> rolling.

Soil 1<sup>st</sup> <sup>3</sup>/<sub>4</sub> 2<sup>nd</sup> rate.

No timber.

Township 13 North, Range 4 W.  
Gila <sup>and</sup> Salt River Meridian

No North. bet secs 8 <sup>and</sup> 9.  
var. 13° 47' East

40.00 Set a <sup>1/4</sup> sec. cor. post in a mound and pits as per instructions. No trees near. A house 10 chs. E. of line.

42.00 Enter willow thicket bears N. E. <sup>1/4</sup> S. N.

46.00 Dry creek bed runs S. N. 10 links wide.

60.00 Leave willow thicket bears N. E. <sup>1/4</sup> S. N.

80.00 Set a post in a mound and pits as per instructions for the cor. to sections 4, 5, 8 <sup>and</sup> 9. No trees near.

Land level.

Orb 1<sup>st</sup> <sup>and</sup> 2<sup>d</sup> rate.

No timber.

Township 13 North Range 4 W.  
 6d<sup>th</sup> Salt River Meridian

to East. on a random line bet. secs  
 4<sup>th</sup> & 9.

var.  $13^{\circ} 41' 17''$  East

10.00 Dry creek 10 links wide runs S.

30.00 House 8 chs N. of line and  
 a house 10 chs S. of line

31.00 Road bears N.  $\frac{1}{4}$  S. and  
 leave ploughed ground.

40.00 Set a  $\frac{1}{4}$  sec. cor. post.

60.00 Enter rolling land.

80.10 Subsect the N.  $\frac{1}{4}$  S. Line of  
 links S. from the cor. to secs  
 3, 4, 9<sup>th</sup> & 10. from which cor. run  
 S.  $89^{\circ} 56'$  N. on true line bet. secs. 4<sup>th</sup> & 9.

var.  $13^{\circ} 41' 17''$  East.

40.03 Set a  $\frac{1}{4}$  sec. cor. post in a mound  
 and pits as per instructions

No trees near.

40.10 The cor. to secs 4, 5, 8<sup>th</sup> & 9.

Land rolling & level. Soil 1<sup>st</sup> rate  
 No timber.

Township 13 North, Range 4 N.  
 Gda and Salt River Meridian

No North, on a random line bet. secs  
 4<sup>1/2</sup> & 5.

var.  $13^{\circ}47' E$ .

- 44.00 Set a tem.  $\frac{1}{4}$  sec. cor. post  
 45.00 E. end. of point of hill.  
 48.00 Dry creek 10 links wide runs S. E.  
 49.00 Base of rock ridge.  
 49.00 Top of same 50 feet high bears  $E^{\frac{1}{2}} N$ .  
 50.00 Intersect the N. boundary line  
 at the cor. to secs. 4, 5, 32  
 $\frac{1}{4}$  33, from which cor. I run  
 South, on true line bet. secs 4<sup>1/2</sup> & 5.

var.  $13^{\circ}47' East$

- 46.00 Set a  $\frac{1}{4}$  sec. cor. stone 20 x  
 12 x 8 in. as per instructions  
 No trees near.  
 47.00 The cor. to secs 4, 5, 8<sup>1/2</sup> & 9  
 Sand level. Soil 1<sup>st</sup> rate  
 No timber.

Date July 11<sup>th</sup> 1872

Township 13 North, Range 4 N.  
 6th Salt River Meridian  
 1st North

bet. secs. 31<sup>q</sup> & 32

var. 13° 27' East

40.00 Set a 1st sec. cor. stone 14  
 x 10 x 6 in. as per instruc-  
 tions.

No trees near.

80.00 Set a stone 18 x 10 x 8 in.  
 as per instructions for  
 the cor. to sections

29. 30. 31<sup>q</sup> & 32.

No trees near

Land steep S. N. slope  
 Soil 2<sup>d</sup> rate for grass.  
 No timber.

Township 13 North, Range 4 N.

6d<sup>m</sup> Salt River Meridian

to East. on a random line bet. secs  
29<sup>q</sup> & 32

var. 13° 47' East

18.00 Summit of hill bet N<sup>q</sup> & S.  
200 feet high.

40.00 Set a 1/4 sec. cor. post.

69.00 Creek in cañon 20 links wide  
runs South.

73.50 Road bears N. <sup>q</sup> S.

80.14 Intersect the N. <sup>q</sup> S. Line at  
the cor. to sections 28, 29, 32

<sup>q</sup> 33 from which cor. I run

N East. on true line bet secs 29<sup>q</sup> & 32

var. 13° 47' East

40.07 Set a 1/4 sec. cor. stone 14 x 10 x  
8 in. as per instructions.

80.14 No trees near.  
the cor. to secs. 29, 30, 31<sup>q</sup> & 32  
Land broken. Soil 2<sup>d</sup> rate.  
No timber.



42

Township 13 North. Range 4 N.  
 6da<sup>th</sup> Salt River Meridian

to W. C. on random line bet. secs  
 30<sup>th</sup> & 31.

var.  $13^{\circ}47'$  East.

40.00 Set a tem.  $\frac{1}{4}$  sec. cor. post

80.15 Intusick the W. Boundary Line  
 1<sup>st</sup> link S. from the cor. to  
 sec. 30. 31. 25<sup>th</sup> & 36. from  
 which cor. I run

S.  $89^{\circ}53'E$ . on true line bet. secs

30<sup>th</sup> & 31.

var.  $13^{\circ}47'$  East.

40.15 Set a  $\frac{1}{4}$  sec. cor. post in a  
 stone mound and pits, as  
 per instructions.

No trees near.

80.15 The cor. to sec.

29. 30. 31<sup>th</sup> & 32.

Land broken

Oil 2<sup>d</sup> rate.

No timber.

Township 13 North. Range 4 W.

Gila and Salt River Meridian

No North. bet. sec. 29<sup>3/4</sup> 30.

var. 13° 41' East

40.00 Set a 4<sup>th</sup> sec. cor. stone 16 x  
10 x 10 in. as per instructions

No trees near.

80.00 Set a stone 18 x 10 x 8 in.  
as per instructions for  
the cor. to sections

19, 20, 29<sup>3/4</sup> 30.

No trees near.

Sand high ridge of hill.  
Soil poor and stony  
on line.

No timber

Township 13 North Range 4 N.  
Tda & Salt River Meridian

- Ch East on random line bet. secs  
20<sup>th</sup> & 29.
- var. 13° 47' East.
- 40.00 Set a true  $\frac{1}{4}$  sec. cor. post.
- 45.00 Foot of hill <sup>and</sup> onto level land.
- 67.50 Road runs N<sup>and</sup> S.
- 80.00 Intersect the N. <sup>and</sup> S. Line  
10 links S. from the cor. to  
sections 20. 21. 28<sup>th</sup> & 29.  
from which cor. I run.  
S. 89° 56' N. on true line bet. secs  
20<sup>th</sup> & 29.
- var. 13° 47' East.
- 40.00 Set a  $\frac{1}{4}$  sec. cor. stone 14 x 12 x  
6 in. as per instructions  
No trees near.
- 80.00 The cor. to secs. 19. 20. 29<sup>th</sup> & 30.  
Land broken.  
Soil 1<sup>st</sup> <sup>and</sup> 3<sup>rd</sup> rate.  
No timber.

Township 13 North Range 4 W.

64<sup>th</sup> Salt River Meridian

40.00 West. on random line bet. secs 19 & 30.  
var.  $13^{\circ}47'$  East.

40.00 Set a con.  $\frac{1}{4}$  sec. cor. post

40.20 Intersect the N. boundary line  
1/4 mile S. from the corner  
to secs. 19, 30, 24 & 25.

from which cor. Iron -  
S.  $89^{\circ}54'$  E. on true line bet secs  
19 & 30.

var.  $13^{\circ}47'$  East.

40.20 Set a  $\frac{1}{4}$  sec. cor. stone  $14 \times 10 \times$   
6 in. as per instructions

No trees near.

40.20 The cor. to secs. 19, 20, 29 & 30.

Land broken.

Oril 3<sup>rd</sup> rate.

No timber.

46

Township 13 North. Range 45  
 Gila <sup>4</sup>/<sub>4</sub> Salt River Meridian  
 T<sub>13</sub> North.

bet. sections 19<sup>th</sup> & 20.  
 var. 13° 47' East.

40.00 Set a '44 sec. cor. stone 14  
 x 10 x 10 in. as per instructions  
 No trees near.

80.00 Set a stone 18 x 10 x 6 in.  
 as per instructions for the  
 cor. to sections  
 17, 18, 19<sup>th</sup> & 20.

No trees near.  
 Land broken mountain  
 Good 3<sup>rd</sup> rate.  
 No timber

Township 13 North. Range 4 N  
 Gila and Salt River Meridian

to East. on random line bet. secs  
 17<sup>th</sup> & 20.

var.  $13^{\circ} 47'$  East

30.00 Bottom of hill  $\frac{3}{4}$  enter level land, bears N  $\frac{3}{4}$  S.

40.00 Set a 7<sup>th</sup> sec. cor. post.

49.00 Enter cornfield bears N  $\frac{3}{4}$  S.

65.00 Beans house 10 chains S.

70.00 Leave cornfield bears N.  $\frac{3}{4}$  S.

70.20 Road bears N.  $\frac{3}{4}$  S.

80.00 Intersect the N  $\frac{3}{4}$  S. Line at the  
 cor. to secs. 16, 17, 20 & 21.

from which cor. Iron -

N. E. on true line bet. secs. 17<sup>th</sup> & 20

var.  $13^{\circ} 47'$  East

40.00 Set a 7<sup>th</sup> sec. cor. stone  $12 \times 12 \times$   
 6 in. as per instructions

of No trees near

80.00 the cor. to secs. 17, 18, 19 & 20

Sand. N. half-hillside and E. half  
 level. Soil 1<sup>st</sup>  $\frac{3}{4}$  2<sup>nd</sup> rate. No timber.

Township 13 North Range 4 N.  
Gila <sup>Co</sup> Salt River Meridian

His West. on a random line bet. secs.  
18<sup>th</sup> & 19.

var.  $13^{\circ}47'$  East.

40.00 Set a term.  $1/4$  sec. cor. post.

54.00 Summit of mountain 300 ft.  
high bears N. N. <sup>W</sup> & S. E.

80.26 Cut across the N. boundary line  
19 links S. from the cor.  
to secs. 18, 19, 13<sup>th</sup> & 24,  
from which cor. I run  
S.  $89^{\circ}57'$  E. on true line bet. secs  
18<sup>th</sup> & 19.

var.  $13^{\circ}47'$  East.

40.26 Set a  $1/4$  sec. cor. stone  $18 \times 10 \times$   
10 in. as per instructions

No trees near.

80.26 The cor. to secs 17, 18, 19<sup>th</sup> & 20

Land broken and stony  
Soil poor

No timber.

Township 13 North. Range 4 West.

64<sup>th</sup> Salt River Meridian

R. North.

bet. secs. 17<sup>th</sup> & 18

var. 13° 47' East

40.00 Set a 1/4 sec. cor. stone 14 x 10  
x 8 in as per instructions  
No trees near.

80.00 Set a stone 12 x 12 x 12 in  
as per instructions for the  
cor. to sections

N. 8. 17<sup>th</sup> & 18.

No trees near.

Land broken & stony.

Oil 3<sup>rd</sup> rate.

No timber.

Jan'y 12<sup>th</sup> 1872



50

Township 13 North, Range 4 W.  
 6th & Salt River Meridian

80. East. on random line bet. secs  
 8<sup>th</sup> & 17<sup>th</sup>.  
 var. 13° 47' East.

40.00 Set a true 1/4 sec. cor. post.  
 44.00 Enter cornfield at base of hill  
 bears N. <sup>90</sup> S.

80.12 Intersect the N. <sup>90</sup> S. Line at  
 the cor. to secs 8, 9, 16<sup>th</sup> & 17<sup>th</sup>,  
 from which cor. I run  
 W. Est. on true line bet. secs 8 & 17.  
 var. 13° 47' East.

40.06 Set a 1/4 sec. cor. stone 14 x  
 12 x 12 in. as per instructions  
 of Notary near.

80.12 The cor. to secs.  
 7, 8, 17<sup>th</sup> & 18.

Land. N. half - hill side  
 E. half - level.

Soil. 2<sup>nd</sup> rate - hillside and  
 1<sup>st</sup> rate - bottom. No timber.

Township 13 North. Range 4 W.  
Gila <sup>and</sup> Salt River Meridian

to West. on random line bet. secs  
7<sup>th</sup> & 18.

var. 13°47' East

40.00 Set a <sup>1</sup>/<sub>4</sub> sec. cor. post.

50.18 Intersect the N. boundary  
13 links N. from the cor.  
to secs. 7, 18, 12 & 13. from  
which cor. run.

N. 89°54' E. on true line bet. secs  
7<sup>th</sup> & 18.

var. 13°47' East

40.18 Set a <sup>1</sup>/<sub>4</sub> sec. cor. stone 16 x  
10 x 4 in as per instructions

No trees near.

40.18 The cor. to secs 7, 8, 12 & 18.

Quart. E. slope of hill.  
Soil. 2<sup>nd</sup> rate.

No timber.

52

Township 13 N. Range 4 N.  
 Gila and Salt River Meridian  
 1st North.

bet. secs 7<sup>th</sup> & 8.

var.  $13^{\circ} 47'$  East.

40.00 Set a 44 sec. cor. stone 14  
 $\times 8 \times 8$  in. as per instruc-  
 tions

No trees near.

80.00 Set a stone  $16 \times 10 \times 6$  in  
 as per instructions for  
 the corner to sections

5, 6, 7<sup>th</sup> & 8

No trees near.

Land - E. slope of hill  
 and stony.

Dir - 2<sup>nd</sup> rate.

No timber.

Township 13 North. Range 4 N  
Gila <sup>9</sup>/<sub>4</sub> Salt River Meridian

No East. or random line bet. secs

5 <sup>9</sup>/<sub>4</sub> 8.

var. 13' 44" East

40.11 Set a temporary <sup>1</sup>/<sub>4</sub> sec. cor. post.

80.09 Intersect the N. <sup>9</sup>/<sub>4</sub> S line 12  
links N. from the cor. to secs.

4. 5. 8 <sup>9</sup>/<sub>4</sub> 9. from which cor. I run

N. 89° 55' N. on true line bet. secs

5 <sup>9</sup>/<sub>4</sub> 8.

var. 13' 44" East

40.14 Set a <sup>1</sup>/<sub>4</sub> sec. cor. stone 14 x  
12 x 6 in. as per instructions

No trees near

80.09 The cor. to secs.

5. 6. <sup>9</sup>/<sub>4</sub> 8.

Land broken E. slope of hill.

Soil. 2<sup>d</sup> rate.

No timber.

Township 13 North, Range 4 West.

6th & Salt River Meridian

1/4 West, on random line bet. secs.

6<sup>th</sup> & 7.

var.  $13^{\circ} 47'$  East.

40.00 Set a Con. 1/4 sec. cor. post.

80.20 Intersect the N. boundary  
line at the cor. to secs 6 & 7.

1<sup>1</sup>/<sub>2</sub> x 12, from which cor. I run  
East, on true line bet. secs

6<sup>th</sup> & 7.

var.  $13^{\circ} 47'$  East.

40.30 Set a 1/4 sec. cor. stone 16  
x 12 x 5 in. as per instructions

No trees near.

80.20 The cor. to secs

5, 6, 7 & 8.

Land broken

Orchard post.

No timber.

Township 13 North. Range 4 W.  
Gila Salt River Meridian

40.10 North. on a random line bet. secs.  
5<sup>th</sup> & 6.

var. 13° 47' East.

44.50 Set a temporary 1/4 sec. cor. post

Deep ravine runs E.

80.10 Intersect the N. boundary line  
1/4 links E. from the cor.  
to secs 5, 6, 31<sup>st</sup> & 32. from  
which cor. I run

S. 0° 7' E. on true line bet. secs.  
5<sup>th</sup> & 6.

var. 13° 47' East

40.10 Set a 1/4 sec. cor. stone 16  
x 10 x 10 in. as per instructions  
No trees near.

80.10 The cor. to secs. 5, 6, 7<sup>th</sup> & 8.

Land broken

Soil poor

No timber

By June 13<sup>th</sup> 1872

## General Description.

This Township embraces Skull Valley and the valley lands are of superior quality. The hill lands are good for grazing only and afford a rich growth of nutritious grasses. Water is plenty but a scarcity of timber exists.

O. W. Proctor  
Asst. Dep. Surveyor

BOOK™ 1034

4-674.

Township 13 N. R. 5 W. Secs. 1, 2, 3, 4, 5, 6, 7, 8, 9, 10, 11, 12, 13, 14, 15, 16, 17, 18, 19, 20, 21, 22, 23, 24, 25, 26, 27, 28, 29, 30, 31, 32, 33, 34, 35, 36

|     |     |     |    |    |    |    |    |    |    |    |
|-----|-----|-----|----|----|----|----|----|----|----|----|
| 6   | 5   | 100 | 4  | 89 | 3  | 78 | 2  | 67 | 1  |    |
|     |     |     | 99 | 88 |    | 77 |    | 66 |    |    |
| 7   | 8   | 98  | 9  | 87 | 10 | 76 | 11 | 65 | 12 |    |
|     | 110 |     | 97 | 86 |    | 75 |    | 64 |    |    |
| 18  | 109 | 17  | 96 | 16 | 85 | 15 | 74 | 14 | 63 | 13 |
|     | 108 |     | 95 |    | 84 |    | 73 |    | 62 |    |
| 19  | 107 | 20  | 94 | 21 | 83 | 22 | 72 | 23 | 61 | 24 |
| 106 | 105 |     | 93 |    | 82 |    | 71 |    | 60 |    |
| 30  | 104 | 29  | 92 | 28 | 81 | 27 | 70 | 26 | 59 | 25 |
| 103 | 102 |     | 91 |    | 80 |    | 69 |    | 58 |    |
| 31  | 101 | 32  | 90 | 33 | 79 | 34 | 68 | 35 | 57 | 36 |

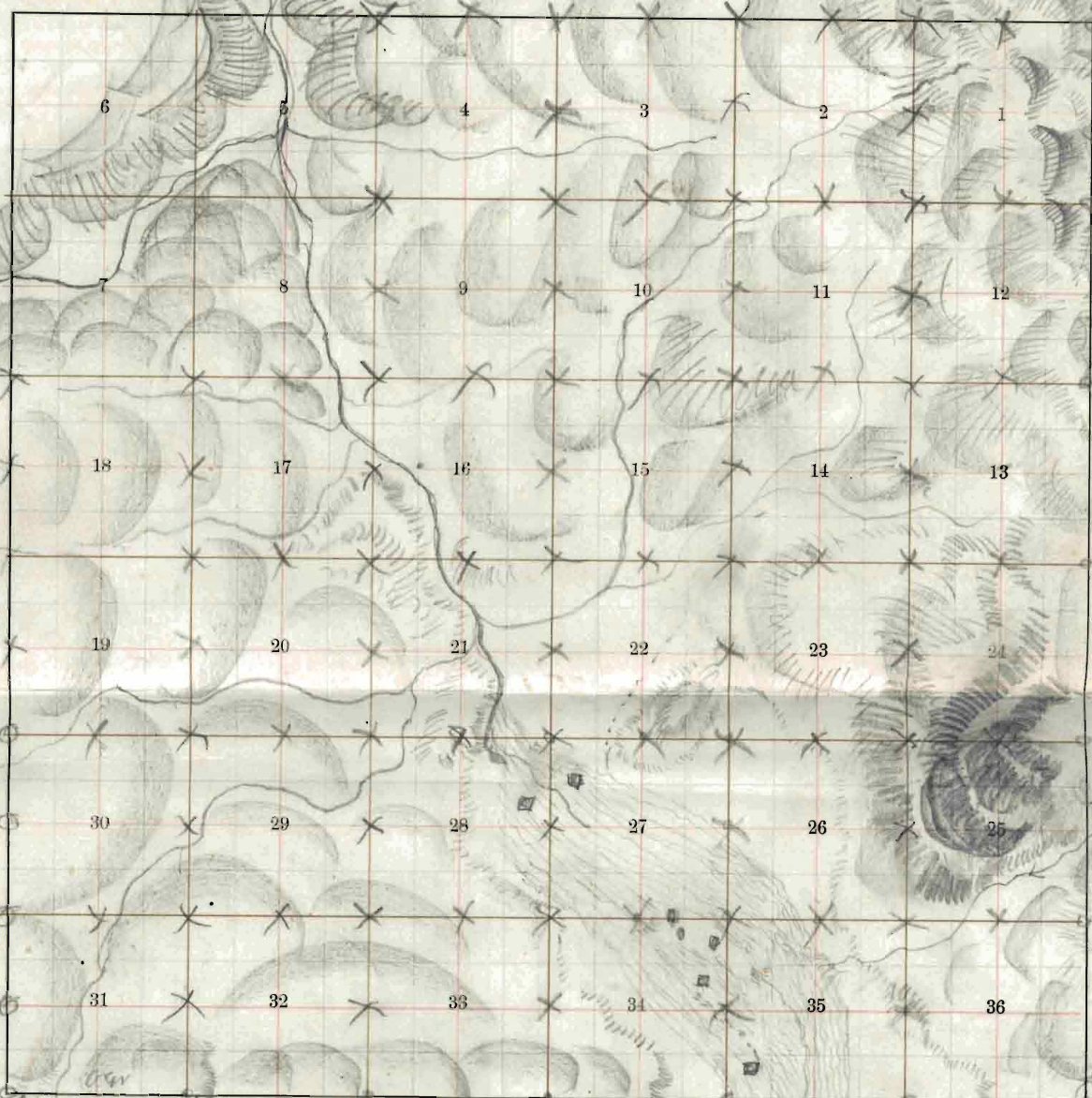


TOWNSHIP 15 N. RANGE 5 West

MERIDIAN

60.74°E

BOOK 1034



3,070.31

Caw 10,20

Bancroft's Blank, Township Plot.

A. L. Bancroft & Co., 721 Market St., San Francisco.

- Meridian Line,
- Base Line,
- Standard Line,
- Township Lines,
- Section Line,
- Meander Lines,
- Office Work,
- Ranch Lines Re-survey

BOOK 1034

56 B

BOOK 1034

Township 13 N. Range 5 W.  
Side of Salt River Meridian

Township 13<sup>th</sup> North. Range 5<sup>th</sup> W.  
 Gila Salt River Meridian

- No. Begin on the South boundary line at the cor. to secs. 35<sup>th</sup> & 36<sup>th</sup>, and run from thence, North, between sections 35<sup>th</sup> & 36<sup>th</sup>.  
 var. 13°40' East  
 (as per East boundary line)
- 40.00 Set a <sup>1</sup>/<sub>4</sub>" sec. cor. post in a mound <sup>4</sup>/<sub>5</sub> fts as per instructions. No trees near.
- 42.00 Leave level land and enter rolling land bears S. E. <sup>4</sup>/<sub>5</sub> N. W.
- 67.50 Run runs S. W.
- 80.00 Set a stone 14 x 12 x 8 in. in mound and set as per instructions for the cor. to secs. 25, 26, 35 & 36.  
 No trees near.  
 Land level <sup>4</sup>/<sub>5</sub> rolling.  
 Soil 1<sup>st</sup> rate.  
 No timber.

Township 13 North. Range 57 West.  
 6th & Salt River Meridian

Rs East. on random line bet. secs  
 25<sup>th</sup> & 36.

var. 13°40' East

27.50 Ravine runs S. N.

40.00 Set a temporary 1/4 sec. cor. post.

50.00 Begin strip accout.

80.24 Substrack the E. boundary line 15  
 links N. from the cor. to secs  
 25. 36. 30<sup>th</sup> & 31. from which  
 cor. I run -

N. 89°54' N. on true line bet. secs  
 25<sup>th</sup> & 36.

var. 13°40' East

40.12 Set a 1/4 sec. cor. post on a  
 mound 1/2 pits as per instructions

No trees near.

80.24 The cor. to secs. 25. 26. 35<sup>th</sup> & 36.

Land rolling & broken.

Soil 2<sup>nd</sup> & 3<sup>rd</sup> rate.

No timber.

Township 13 North, Range 5th  
 T4d<sup>44</sup> Salt River Meridian  
 T3 North, bet. secs. 25<sup>44</sup> & 26.  
 var. 13° 40' East

40.00 Set a  $\frac{1}{4}$  sec. cor. stone 14 x 10 x  
 6 in. as per instructions  
 No trees near.

80.00 Set a stone 16 x 10 x 10 in. as  
 per instructions for the  
 cor. to secs  
 23, 24, 25<sup>44</sup> & 26.  
 No trees near.

Land rolling foot hills  
 Soil 3<sup>rd</sup> rate.  
 No timber.

60

Township 13 North, Range 5 W.  
 6th & Salt River Meridian

- |       |   |
|-------|---|
| 15.00 | East. on random line bet. secs<br>24 <sup>th</sup> & 25.  |
|       | var. 13°40' East.   |
| 40.00 | Begin steep rocky ascent.   |
| 40.00 | Set low 1/4 sec. cor. post.   |
| 52.00 | Top of ascent 400 feet high.  |
| 80.36 | Intersect the E. boundary line<br>20 links S. from the corner<br>to secs. 24, 25, 19 <sup>th</sup> & 20. from<br>which cor. run —<br>S. 89°51' W. on true line bet. secs.<br>24 <sup>th</sup> & 25. |
|       | var. 13°40' East.   |
| 40.18 | Set a 1/4 sec. cor. stone 16 x<br>10 x 8 in. as per instructions<br>No trees near.  |
| 80.36 | The cor. to secs 23, 24, 25 & 26.<br>Land. steep rock point.<br>Soil worthless.<br>No timber  |

Township 13 North Range 5 N.  
 Gila & Salt River Meridian  
 T<sub>13</sub> North.

bet. secs 23<sup>q</sup> & 24.

var. 13'40" East

40.00 Set a 74 sec. cor. post in  
 a mound and pit as per  
 instructions.

No trees near.

50.00 Set a stone 18x10x10 in. as  
 per instructions for the cor.  
 to sections

13, 14, 23<sup>q</sup> & 24.

No trees near.

Land rolling foot hills  
 Soil 2<sup>d</sup> rate for grass  
 No timber.

Township 13 North, Range 5 W.  
 T. 4 S. Salt River Meridian

Rs East. on random line bet. secs  
 13<sup>q</sup> 24.

var. 13° 40' East.

18.00 Begin ascent bears N <sup>q</sup> S.

40.00 Set a term. <sup>1</sup>/<sub>4</sub> sec. cor. post.

80.09 Intersect the E. boundary  
 14 links N. from the cor.

to secs: 13, 24, 18<sup>q</sup> 19, from which cor. from  
 N. 89° 54' W. on true line bet. secs.  
 13<sup>q</sup> 24.

var. 13° 40' East

40.04 Set a <sup>1</sup>/<sub>4</sub> sec. cor. stone 14 x

12 x 5 in. as per instructions

No trees near.

80.09 The cor to secs

13, 14, 18<sup>q</sup> 24.

Land broken

Oil 3<sup>rd</sup> rate.

No timber.



Township 13 North, Range 5 N.

7th Salt River Meridian

Sec 14 North

bet. secs 13<sup>th</sup> & 14.

var. 13' 40" East

32.00 Deep gulch runs N.

40.00 Set a <sup>1</sup>/<sub>4</sub> sec. cor. stone 12 x 12  
x 8 in. as per instructions

No trees near.

80.00 Set a stone 18 x 10 x 10 in. as  
per instructions for the  
cor. to secs.

11, 12, 13<sup>th</sup> & 14

No trees near.

Land prairie

Soil 3<sup>rd</sup> rate

No timber.

64

Township 13 North Range 5 N.  
 Gilman Salt Rock Mendocino

Rs East on random line bet. secs.  
 12<sup>th</sup> & 13.

var. 13°40' East.

40.00 Set a true 4<sup>th</sup> sec. cor. post.

80.20 Intersect the E. boundary  
 line 16 links S. from the cor.  
 to secs. 12, 13, 7 & 18, from which cor. I run  
 S. 89°53' W. on true line bet. secs 12 & 13.

var. 13°40' East

40.10 Set a 4<sup>th</sup> sec. cor. stone 10x10x  
 10 in., as per instructions

80.50 No trees near.  
 The cor. to secs.

11, 12, 13<sup>th</sup> & 14.

Land broken.

Opil 3<sup>rd</sup> rate.

No timber.

Township 13 North Range 5 N.

Geo. Salt River Meridian

Sec. North.

bet. secs 11<sup>th</sup> & 12<sup>th</sup>

var. 13' 40" Each

40.00 Set a  $\frac{1}{4}$  sec. cor. stone 14 x 14 x 8 in. as per instructions  
No trees near.

80.00 Set a stone 16 x 10 x 10 in. as per instructions for the cor. to secs.

1. 2. 11<sup>th</sup> & 12<sup>th</sup>.

No trees near.

Land rough & broken  
Soil 3<sup>rd</sup> rate.

No timber.

Township 13 North. Range 5 W.  
 Tda<sup>ny</sup> Salt River Meridian

- 40.00 East. on random line bet. secs 1<sup>ny</sup> & 12.  
 var.  $13^{\circ}40'$  East.
- 40.00 Section 14 sec. cor. post on summit of hill
- 80.14 Intersect the E. boundary line  
 8 rods S. from the cor. to sec  
 1. 12.6<sup>ny</sup> y. from which cor. run  
 S. 89<sup>ny</sup> 05 y N. on true line bet. secs  
 1<sup>ny</sup> & 12.  
 var.  $13^{\circ}40'$  East.
- 40.00<sup>ny</sup> Section 14 sec. cor. stone 14 x 14  
 x 6 in. as per instructions  
 No trees near.
- 80.14 The cor. to secs 1, 2, 11<sup>ny</sup> & 12  
 Land broken.  
 Soil 3<sup>rd</sup> rate.  
 No timber.

Township 13 North Range 5 N.  
Gila Salt River Meridian

No North. on random line bet. secs  
1<sup>4</sup>/<sub>4</sub> 2

var. 13° 40' East

40.00 Set a tern. <sup>1</sup>/<sub>4</sub> sec. cor. post.

46.00 Ravine runs S. N.

80.15 Intersect. the North boundary

line 18 links N. from the cor.

to secs 1, 2, 35<sup>4</sup>/<sub>4</sub> & 36. from which  
cor. run.

S. 0° 08' N. on true line bet. secs  
1<sup>4</sup>/<sub>4</sub> 2.

var. 13° 40' East

40.15 Set a <sup>1</sup>/<sub>4</sub> sec. cor. stone 18 x 10 x  
8 in. as per instructions

No trees near

80.15 the cor. to secs 1, 2, 11<sup>4</sup>/<sub>4</sub> & 12

Land broken

Soil poor. No timber.

Done Jan'y 15<sup>th</sup> 1872

Township 13 North Range 5 N.

Sec 4 Salt River Meridian

Sec 4 North. sec. 34  $\frac{1}{4}$  35.  
var.  $13^{\circ}40'$  East.

- 2.50 Enter cornfield bears N. N.  $\frac{1}{4}$  S. E.
- 15.00 A house 15 chains E. of line.
- 35.00 Road bears N. N.  $\frac{1}{4}$  S. E.
- 40.00 Set a  $\frac{1}{4}$  sec. cor. post in a mound  
and pit, as per instructions.  
No trees near.
- 50.00 a house 15 chains N. of line
- 52.50 Leave cornfield bears N. N.  $\frac{1}{4}$  S. E.
- 65.00 House 5 chains N. of line.
- 75.00 Enter cornfield bro E.  $\frac{1}{4}$  N.
- 80.00 Set a stone  $16 \times 10 \times 10$  in. as per  
instructions for the cor.  
to sec. 26. 27. 34  $\frac{1}{4}$  35.  
No trees near.
- Land level. Soil 1 $\frac{1}{2}$  rate.  
No timber.

Township 13 North, Range 5 N.

S. 1/4 Salt River Mendocino

Rs East. on random line bet. secs  
26 <sup>1</sup>/<sub>4</sub> 35.

var. 13°40' East

36.00 Leave cornfield bears N. <sup>1</sup>/<sub>4</sub> S.

40.00 Set a <sup>1</sup>/<sub>4</sub> sec. cor. post.

42.00 Enter rolling land bears N. <sup>1</sup>/<sub>4</sub> S.

80.00 Intersect the N. <sup>1</sup>/<sub>4</sub> S. Line at the  
cor. to secs. 25, 26, 35 <sup>1</sup>/<sub>4</sub> 36.

from which corner I run

N. E. S. on true line bet. secs 26 <sup>1</sup>/<sub>4</sub> 35

var. 13°40' East

40.00 Set a <sup>1</sup>/<sub>4</sub> sec. cor. stone 14 x 8 x

8 in. as per instructions

80.00 No trees near.  
The cor. to secs 26, 27, 34 <sup>1</sup>/<sub>4</sub> 35.

Land level <sup>1</sup>/<sub>4</sub> rolling.

Soil 1<sup>st</sup> rate.

No timber.

Township 13 North, Range 5 N.  
 Gila & Salt River Meridian  
 T<sub>1</sub>S. 13N.

bet. secs. 26<sup>th</sup> & 27<sup>th</sup>.

var. 13° 40' East

34.00 Square cornfield bears N. N. <sup>1/4</sup> S. E.

40.00 Set a 44 sec. cor. post in a mound  
 and pits as per instructions

No trees near.

80.00 Set a stone 14 x 10 x 10 in.  
 in a mound and pits as  
 per instructions for the  
 cor. to secs.

22.23.26. <sup>th</sup> 27.

No trees near.

Land level

Soil <sup>pt</sup> state.

No timber.



Township 13 North Range 5 N.  
 6th Salt River Meridian

R East. or random line bet. secs  
 23<sup>1/4</sup> & 26.

var. 13°40' East

30.00 Entire rolling land bears N. N. <sup>1/2</sup> S. E.

40.00 Set a true <sup>1/2</sup> sec. cor. post.

58.00 Began steep ascent, bears N. <sup>1/2</sup> S.

80.10 Intersuch the N. <sup>1/2</sup> S. Line 15  
 links N. from the cor. to secs 23.

24.25<sup>1/4</sup> & 26. from which cor. I run  
 N. 89°54' N. on true line bet. secs 23<sup>1/4</sup> & 26.

var. 13°46' East

40.05 Set a <sup>1/2</sup> sec. cor. post in a  
 mound and pits as per instructions

80.10 The cor. to secs  
 22, 23, 26, <sup>1/4</sup> & 27.

Land level <sup>1/2</sup> E. end of line broken  
 Soil 1<sup>st</sup>, 2<sup>nd</sup> <sup>1/4</sup> & 3<sup>rd</sup> rate.

No timber

Township 13 North, Range 5 N.

6th Salt River Meridian

Sec. 22 North.

bet. secs. 22<sup>nd</sup> & 23.

var. 13° 4.0' East

- 21.00 Enter rolling rocky land
- 40.00 Set a 1<sup>st</sup> sec. cor. stone 14" x  
10 x 8 in. as per instructions  
No trees near.
- 45.00 Smooth rolling hills.
- 80.00 Set a post in a mound <sup>1/4</sup> pds  
as per instructions for the cor.  
to secs

14.15. 22<sup>nd</sup> & 23.

No trees near.

Land broken <sup>and</sup> rolling hills

Soil 2<sup>nd</sup> rate.

No timber

Township 13 North, Range 5 N  
 Tada<sup>no</sup> Salt River Meridian

40.00 East. on random line bet. secs  
 14<sup>th</sup> & 23.

var. 13°40' East

40.00 Set a con. 1/4 sec. cor. post.

80.26 Intuseth the N. <sup>1/4</sup> S. Line of  
 line's S. from the cor. to secs  
 13. 14. 23<sup>rd</sup> & 24. from which cor. true  
 S. 89°03' of N. on true line bet. secs  
 14<sup>th</sup> & 23.

var. 13°41' East

40.13 Set a 1/4 sec. cor. stone 16 x 10 x  
 5 in. as per instructions.

No trees near.

80.26 The cor. to secs

14. 15. 22<sup>nd</sup> & 23.

Land broken slope of hill.  
 Soil 3<sup>rd</sup> rate.

No timber.

Township 13 North Range 5 N.  
 T14<sup>m</sup> Salt River Meridian  
 No North.

bet. sec. 14<sup>m</sup> & 15

var. 13° 40' East.

19.00 Deep gulch runs S. N.

40.00 Set a 1/4<sup>m</sup> sec. cor. stone 14 x  
 12 x 8 in. as per instructions  
 No trees near.

80.00 Set a stone 16 x 10 x 10 in.  
 as per instructions for the  
 cor. to sec.

10, 11, 12<sup>m</sup> & 15. No trees near

Land broken

Soil 3" rate.

No timber.

Township 13 North. Range 5 N.

Eda<sup>4</sup> Salt River Mendocino

- 46.00 East on random lumber sec. 11<sup>1/4</sup> 14.  
var. 13°40' East
- 46.00 Set a con. 1/4 sec. cor. post.
- 57.75 Deep gulch runs S. N.
- 80.10 Intersect the N. & S. Line at  
the cor. to secs. 11. 12. 13<sup>1/4</sup> 14  
from which cor. true —  
W. Est. on true line bet. secs 11<sup>1/4</sup> 14.  
var. 13°40' East
- 46.05 Set a 1/4 sec. cor. stone 12 x 12 x  
8 in. as per instructions
- 80.10 No trees near  
The cor. to secs  
10. 11. 12<sup>1/4</sup> 15.  
Land broken<sup>4</sup> & hilly.  
Drib 3<sup>rd</sup> rate.  
No timber.

Township 13 North, Range 35 N.  
 Gila & Salt River Meridian  
 13 North

Secs. 10<sup>th</sup> & 11

var. 13° 40' East

40.00 Set a 1<sup>st</sup> sec. cor. stone 16 x  
 10 x 8 in. as per instructions  
 No trees near.

67.50 Deep gulch runs S. N.

80.00 Set a stone 18 x 10 x 6 in. as  
 per instructions for the cor.  
 to sections

2. 3. 10<sup>th</sup> & 11.

No trees near

Land broken hills.

Coil 3<sup>rd</sup> rate.

No timber

Township 13 North Range 5 N.  
 T14<sup>th</sup> Salt River Meridian

Rs East. on random line bet. secs 2<sup>nd</sup> & 11.

var. 13°40' East

18.50 Deep gulch runs S. N.

40.00 Set a temporary <sup>1/4</sup> sec. cor. post.

80.00 Intersect the N. <sup>1/4</sup> S. Line 18

links S. from the cor. to secs.

1, 2, 11<sup>th</sup> & 12, from which cor. I run

S. 89°52' N. on true line bet. secs

2<sup>nd</sup> & 11.

var. 13°40' East

40.00 Set a <sup>1/4</sup> sec. cor. stone 14 x 12 x

10 in. as per instructions

No trees near.

80.00 The cor. to secs.

2, 3, 10<sup>th</sup> & 11.

Land broken hills

Soil 3<sup>rd</sup> rate

No timber.

Township 13 North. Range 5<sup>th</sup>.  
 T. 4<sup>th</sup> S. Salt River Meridian

The North. meridian line bet. sec. 2<sup>nd</sup> & 3.  
 var. 13° 40' East.  
 40.00 Set a tem. 1/4 sec. cor. post.  
 50.10 Intersect the N. boundary line  
 8 links N. from the cor. to  
 secs. 2. 3. 34<sup>th</sup> & 35. from  
 which cor. I run  
 S. 0° 3' N. on true line bet. secs  
 2<sup>nd</sup> & 3.

var. 13° 40' East.  
 40.10 Set a 1/4 sec. cor. stone 18 x  
 10 x 8 in. as per instructions  
 No trees near.

50.10 The cor. to secs.  
 2. 3. 10<sup>th</sup> & 11.  
 Land broken hills  
 Soil poor.  
 No timber.

Date Jan'y 16<sup>th</sup> 1872



Township 13 North. Range 5 W.

6th & Salt River Meridian

1/4 North.

bet. secs. 33 <sup>1</sup>/<sub>4</sub> & 34

var. 13' 40" East

40.00 Set a <sup>1</sup>/<sub>4</sub> sec. cor. stone 14 x  
10 x 8 in. as per instructions

No trees near.

80.00 Set a stone 18 x 12 x 12 in.  
in a stone mound as per  
instructions for the corner  
to secs.

27. 28. 33 <sup>1</sup>/<sub>4</sub> & 34.

No trees near.

Land broken foot hills  
Soil 2<sup>nd</sup> rate.

No timber.

Township 13 North, Range 5 W.  
 Gila & Salt River Meridian

- The East. or section line bet. secs. 27<sup>th</sup> & 34<sup>th</sup>.  
 var. 13° 46' East.
- 2.00 Enter level bottom land bet. 71.76<sup>th</sup> & S.E.
- 15.00 Enter Cornfield bet. 71.76<sup>th</sup> & S.E.
- 40.00 Set a com. <sup>1</sup>/<sub>4</sub> sec. cor. post.
- 56.00 Measure 10 feet S. of line
- 80.00 Intrench the N. <sup>1</sup>/<sub>4</sub> S. Line at  
 the cor. to secs 26. 27<sup>th</sup>. 34<sup>th</sup>  
 & 35. from which cor. I run  
 West. out to line bet. secs. 27<sup>th</sup> & 34<sup>th</sup>.  
 var. 13° 40' East
- 40.00 Set a <sup>1</sup>/<sub>4</sub> sec. cor. post in a mound  
 and pits as per instructions  
 No trees near.
- 80.00 The cor. to secs  
 27<sup>th</sup>. 28. 33<sup>rd</sup> & 34.
- Land level.  
 Soil 1<sup>st</sup> rate.  
 No timber.

Township 13 North, Range 5 W.

6th & Salt River Meridian.

27<sup>th</sup> & 28<sup>th</sup> North. bet. secs. 27<sup>th</sup> & 28<sup>th</sup>.

var. 13° 40' East

3.00 Enter lead bottom lands bears  
N. N.  $\frac{1}{4}$  S. E.

40.00 Set a  $\frac{1}{4}$  sec. cor. post in a mound  
and pits as per instructions  
No trees near.

50.00 A house 5 chs N. of line and a  
house 10 chains E. of line.

60.00 Creek 10 links wide runs N. N. and enters  
cornfield.

43.25 Leave cornfield bears E.  $\frac{1}{4}$  N.

80.00 Set a stone 14 x 10 x 6 in. in a  
mound and pits as per instructions  
for the cor. to secs

21. 22. 27<sup>th</sup> & 28<sup>th</sup>.

No trees near

Lead lead.

Soil 1<sup>st</sup> rate.

No timber

82

Township 13 North Range 5 N.  
Elev <sup>4</sup>/<sub>4</sub> Salt River Meridian

|       |   |                   |
|-------|---|-------------------|
| R3    | East. on random line bet. secs<br>22 <sup>4</sup> / <sub>4</sub> 27.  |                   |
|       |   | var. 13° 40' East |
| 23.00 | Old wagon road bears N. <sup>4</sup> / <sub>4</sub> S.  |                   |
| 29.00 | Enter rolling land bears N.E. <sup>4</sup> / <sub>4</sub> S.  |                   |
| 40.00 | Set a tm. <sup>1</sup> / <sub>4</sub> sec. cor. post.   |                   |
| 70.00 | Enter level land bears N.E. <sup>4</sup> / <sub>4</sub> S. 26   |                   |
| 80.12 | Intersect the N. <sup>4</sup> / <sub>4</sub> S. line at<br>the cor. to secs. 22, 23, 26 <sup>4</sup> / <sub>4</sub><br>27. from which cor. run<br>N.E. on true line bet. secs 22 <sup>4</sup> / <sub>4</sub> 27.<br>var. 13° 40' East |                   |
| 40.06 | Set a <sup>1</sup> / <sub>4</sub> sec. cor. stone 10x<br>10x10 in. as per instructions<br>No trees near.  |                   |
| 80.12 | No cor. to secs<br>21, 22, 27 <sup>4</sup> / <sub>4</sub> 28.   |                   |
|       | Land rolling<br>Drib 1 <sup>st</sup> <sup>4</sup> / <sub>4</sub> rate<br>No timber.   |                   |

Township 13 North, Range 37.  
 6th Salt River Meridian  
 1/4 North.

bet. sec. 21<sup>st</sup> & 22<sup>nd</sup>

var. 13° 40' East

30.00 Entire rolling land, bears E. & N.

40.00 Set a 1/4 sec. cor. post in a  
 mound and pits as per  
 instructions.

No trees near.

58.00 Dry creek 20 links wide runs N.

80.00 Set a post in a mound and  
 pits as per instructions for  
 the cor. to sections

15, 16, 21<sup>st</sup> & 22<sup>nd</sup>.

No trees near.

Land level<sup>ly</sup> rolling  
 Soil 1<sup>st</sup> <sup>st</sup> <sup>st</sup> rate.

No timber.

84

Township 13 North, Range 57 W.  
 Tola  $\frac{1}{4}$  Salt River Meridian

No. East. in random line bet. secs  
 15  $\frac{1}{4}$  22.

var. 13° 40' East.

30.00 Dry creek 20 links wide runs S. W.

40.00 Set a  $\frac{1}{4}$  sec. cor. post.

80.00 Intersect the N.  $\frac{1}{4}$  S. Line  
 10 links S. from the cor. to  
 secs. 14, 15, 22  $\frac{1}{4}$  23. from  
 which corner I run

S. 89° 56' W. in true line bet. secs.  
 15  $\frac{1}{4}$  22.

var. 13° 40' East.

40.00 Set a  $\frac{1}{4}$  sec. cor. post in a  
 ground  $\frac{1}{4}$  pds as per instruction

No trees near

80.00 No cor. to secs

15, 16, 21  $\frac{1}{4}$  22

Land rolling  
 Soil 2<sup>nd</sup> rate.

No timber.

Township 13 North Range 5 N.  
 Gila Salt River Indian  
 Co North.

bet. secs. 15<sup>th</sup> & 16

var. 13° 40' East

40.00 Set a  $\frac{1}{4}$  sec. cor. stow 14 x  
 12 x 6 in. as per instructions

No trees near

52.00 Begin steep ascent.

80.00 Set a stow 16 x 12 x 8 in.  
 as per instructions for the  
 cor. to sections

9. 10. 15<sup>th</sup> & 16.

No trees near

Land broken hills

Soil 2<sup>nd</sup> rate.

No timber

Township 13 North, Range 37 W.  
 6th Salt River Meridian

- |       |  |
|-------|--|
| No    | East. or random line bet. secs                         |
|       | 10 <sup>th</sup> & 15.                                 |
|       | var. 13° 40' East.                                     |
| 29.00 | Deep gulch runs S.                                     |
| 40.00 | Set a <sup>1</sup> / <sub>4</sub> sec. cor. post.      |
| 80.16 | Intersect the N <sup>th</sup> & S. line 15             |
|       | links S. from the cor. to secs                         |
|       | 10, 11, 12 & 15, from which                            |
|       | cor. I run.  |
|       | S. 89° 54' N. on true line bet. secs                   |
|       | 10 <sup>th</sup> & 15.                                 |
|       | var. 13° 40' East.                                     |
| 40.08 | Set a <sup>1</sup> / <sub>4</sub> sec. cor. stone 12 x |
|       | 10 x 8 in. as per instructions                         |
|       | No trees near.   |
| 80.16 | The cor. to secs 9, 10, 15 & 16.                       |
|       | Land broken hills.                                     |
|       | Oril 3 <sup>d</sup> rate.                              |
|       | No timber.   |



Township 13 North Range 5 N.  
 T14 S Salt River Meridian  
 S. North.

bet. secs. 9<sup>th</sup> & 10.  
 var. 13° 40' East

40.00 Set a  $\frac{1}{4}$  sec. cor. stone 16 x 10 x  
 6 in. as per instructions

No trees near.

80.00 Set a stone 18 x 10 x 6 in. as  
 per instructions for the corner  
 to section

3, 4, 9<sup>th</sup> & 10.

No trees near.

Land broken hills

Oil 3<sup>rd</sup> rate.

No timber.

Township 13 North, Range 5 W.

6th & Salt River Meridian

No East. on random line bet. secs 3<sup>rd</sup> & 10  
var. 13° 40' East.

40.00 Set a tem. 1/4 sec. cor. post.

80.18 Intersect the N. & S. Line at  
the cor. to secs. 2, 3, 10<sup>th</sup> & 11.  
from which cor. I run

N East. on true line bet. secs 3<sup>rd</sup> & 10.  
var. 13° 40' East.

40.09 Set a 1/4 sec. cor. stone  
16 x 12 x 5 in. as per instructions

No trees near.

80.18 the cor. to secs  
3, 4, 9<sup>th</sup> & 10.

Land broken hills  
Soil 3<sup>rd</sup> rate.  
No timber.

Township 13 North, Range 5th.

Sec 4 Salt River Meridian

to North, on a random line bet secs.  
3<sup>4</sup> & 4.

var. 13°40' East

18.00 Dep. same runs west.

40.00 Set a con. 1/4 sec. cor. post.

80.20 Intersect the N. boundary  
line 17 rods N. from the  
cor. to secs. 3, 4, 33<sup>4</sup> & 34, from  
which cor. run

S. 0° 4' N. in true line bet secs 3 & 4.

var. 13°40' East

40.20 Set a 1/4 sec. cor. stone 14 x 10 x  
10 in. as per instructions

No trees near.

80.20 to cor to secs.

3, 4, 9<sup>4</sup> & 10.

Land broken stony hills

Coil pass.

No timber

Set to Jan'y 17<sup>th</sup> 1872

90

Township 13 North Range 5 W.  
 Gila Salt River Meridian  
 No North

bet. secs 32<sup>nd</sup> & 33

var. 13' 40" East

40.00 Set a <sup>1/4</sup> sec. cor. stone  
 14 x 10 x 6 in. as per instruc-  
 tions.

No trees near.

80.00 Set a stone 16 x 12 x 5 in.  
 as per instructions for the  
 cor. to secs

28, 29, 32<sup>nd</sup> & 33.

No trees near.

Land broken and stony  
 hills.

Soil poor.

No timber.

Township 13 North, Range 5 N.  
 6th Salt River Meridian

Set East. on a random line bet. secs  
 28  $\frac{1}{4}$  33.

var. 13°41' East

40.11 Set a tem.  $\frac{1}{4}$  sec. cor. or post.

65.00 Begin steep descent of hill.

80.75 Intersect the N.  $\frac{1}{4}$  S. Line  
 at the cor. to secs. 27, 28.

33  $\frac{1}{4}$  34. from which cor. run

West. on true line bet. secs 28  $\frac{1}{4}$  33

var. 13°40' East

40.14 Set a  $\frac{1}{4}$  sec. cor. stone 14 x  
 12 x 8 in. as per instructions

No trees near.

80.78 The cor. to secs

28, 29, 32  $\frac{1}{4}$  33

Land broken part hills  
 On 2<sup>d</sup> rate.

No timber.

Township 13 North, Range 51.

Gila Salt River Meridian

No. North, bet. sec. 28<sup>th</sup> & 29.  
var. 13° 40' East.

40.00 Set a <sup>1</sup>/<sub>4</sub> sec. cor. stone 15 x  
10 x 5 in. as per instructions

No trees near.

61.00 Dry creek 20 links wide  
runs N.E. in deep gulch.

80.00 Set a stone 18 x 10 x 10 in.  
as per instructions for the  
cor. to sections

20, 21, 28<sup>th</sup> & 29.

No trees near.

Sand broken foot hills  
Soil 3<sup>rd</sup> rate.

No timber.

Some good grass.

Township 13 North, Range 5 W.

Eda  $\frac{1}{4}$  Salt River Meridian

- East. random line bet. secs.  
21  $\frac{1}{4}$  28.  
var.  $13^{\circ}40'$  East
- 18.00 Dry creek 20 links wide runs N.  $\frac{1}{4}$  S.
- 20.00 Top of bluff bears N. E.  $\frac{1}{4}$  S.  $\frac{1}{4}$  S.
- 35.00 Begin steep descent bears N.  $\frac{1}{4}$  S.
- 40.00 Set a  $\frac{1}{4}$  sec. cor. post.
- 18.00 Enter level bottom land bears N.  $\frac{1}{4}$  S.
- 80.17 $\frac{1}{2}$  Intersect the N.  $\frac{1}{4}$  S. Line 22 links  
South from the cor. to secs. 21.22.  
27  $\frac{1}{4}$  28, from which cor. I run  
S.  $89^{\circ}37'$  N. on true line bet. secs. 21  $\frac{1}{4}$  28.  
var.  $13^{\circ}40'$  East
- 40.08 Set a  $\frac{1}{4}$  sec. cor. stone  $14 \times 10 \times 6$  in  
as per instruction
- 80.17 $\frac{1}{2}$  No trees near  
The cor. to secs. 20.21.28  $\frac{1}{4}$  29.  
Land, E. half-level. N. half-broken.  
Doubt 1<sup>st</sup>  $\frac{1}{4}$  2<sup>d</sup> sale.  
No timber

94

Township 13 North. Range 5 W.  
 Tila <sup>4</sup>/<sub>4</sub> Salt River Meridian  
 S<sup>4</sup> North.

bet. secs 20 <sup>4</sup>/<sub>4</sub> 21.

var. 13° 40' East.

20.00 Long gulch runs E.

40.00 Set a <sup>1</sup>/<sub>4</sub> sec. cor. stone 14 x  
 12 x 8 in. as per instructions  
 No trees near.

80.00 Set a stone 16 x 14 x 10 in.  
 as per instructions for the  
 cor. to secs

16. 1<sup>4</sup>/<sub>4</sub>. 20 <sup>4</sup>/<sub>4</sub> 21.

No trees near

Land broken part hills  
 Soil 2<sup>o</sup> rate.

No timber.



Township 13 North. Range 5 N.

6th & Salt River Meridian

Set East. on random line bet. secs  
16<sup>th</sup> & 21.

var. 13°40' East

20.00 N. bank of cañon runs N.

30.00 S. of creek in cañon 20 links  
wide runs N.

40.00 Set a tem. 1/4 sec. cor. post.

80.10 Intersect the N. & S. Line at the  
cor. to secs 15. 16. 21<sup>st</sup> & 22 from  
which cor. I run

West. on true line bet. secs 16<sup>th</sup> & 21

var. 13°40' East

40.05 Set a 1/4 sec. cor. stone 10 x 10 x 8  
in. as per instructions

No trees near.

80.10 The cor. to secs

16. 17. 20<sup>th</sup> & 21.

Land broken <sup>any</sup> rough  
Ore 3<sup>rd</sup> rate.  
No timber.

96

Township 13 North, Range 5 N.  
 Gila & Salt River Meridian  
 T. 13 North

bet. secs 16<sup>th</sup> & 17<sup>th</sup>.

var. 13° 40' East.

40.00 Set a  $\frac{1}{4}$  sec. cor. stone 16 x  
 10 x 7 in. as per instructions  
 No trees near.

40.00 Creek 10 links wide, runs N. N.  
 in deep cañon.

80.00 Set a stone 18 x 10 x 8 in. as  
 per instructions for the cor.  
 to secs.

8, 9, 16<sup>th</sup> & 17<sup>th</sup>.

No trees near.

Land broken <sup>and</sup> rough.Doubt 3<sup>rd</sup> rate.

No timber.

Township 13 North Range 5 N.  
 Tila <sup>4</sup>/<sub>4</sub> Salt River Meridian

Sec. East on random line bet. secs  
 9 <sup>4</sup>/<sub>4</sub> 16.

var. 13° 40' East  
 40.00 Set a tern. <sup>1</sup>/<sub>4</sub> sec. cor. post.

80.16 Intersect the N. <sup>4</sup>/<sub>4</sub> S. Line 20  
 links S. from the cor. to sec  
 9. 10. 15 <sup>4</sup>/<sub>4</sub> 16. from which cor. down  
 S. 89° 51' N. on true line bet. secs 9 <sup>4</sup>/<sub>4</sub> 16.

var. 13° 40' East  
 40.08 Set a <sup>1</sup>/<sub>4</sub> sec. cor. stone 14 x  
 10 x 6 in. as per instructions  
 No trees near.

80.16 The cor. to secs.  
 8. 9. 16 <sup>4</sup>/<sub>4</sub> 17.

Land broken and hilly.  
 Soil 3<sup>d</sup> rate.  
 No timber.

Township 13 North, Range 5 N.  
 Td. <sup>4</sup>/<sub>4</sub> Salt River Meridian  
 R. North.

bet. sec 8 <sup>4</sup>/<sub>4</sub> 9.

var. 13' 40' East.

40.00 Set a 1/4 sec. cor. stone 16 x  
 12 x 6 in. as per instructions  
 No trees near.

80.00 Set a stone 14 x 10 x 10 in. as  
 per instructions for the cor.  
 to sec.

4, 5, 8, <sup>4</sup>/<sub>4</sub> 9.

No trees near.

Land broken hills.

Soil poor.

No timber.

Township 13 North. Range 5 N.

E. 1/4 Salt River Meridian

40.00 East. on random line bet. secs 4<sup>th</sup> & 9.  
var. 13°40' East

Set a con. 1/4 sec. cor. post.

80.30 Intersect the N. 1/4 S. Line 19  
links S. from the cor. to secs  
3, 4, 9<sup>th</sup> & 10. from which cor.  
I run

S. 89°52' N. on true line bet. secs  
4<sup>th</sup> & 9.

var. 13°40' East

40.15 Set a 1/4 sec. cor. stone 12 x  
12 x 12 in. as per instructions

No trees near.

80.30 The cor. to secs.

4, 5, 8<sup>th</sup> & 9.

Land broken and stony.

Good poss.

No timber.

100

Township 13 North Range 5 N.

Gila Salt &amp; Rain Meridian

This North or random line bet. secs 4<sup>th</sup> & 5.

var. 13°40' East

22.30 Deep rocky gulch runs N.

40.00 Set a tem. <sup>W</sup> sec. cor. post.80.28 Intersect the N. boundary line  
23 links N. from the cor. to  
secs 4, 5, 32<sup>th</sup> & 33, from which  
cor. I run -S. 0° 10' N. outline line bet. secs  
4<sup>th</sup> & 5.

var. 13°40' East

40.28 Set a <sup>W</sup> sec. cor. stone 16 x  
10 x 8 in. as per instructionsNo trees near  
80.28 the cor. to secs4, 5, 8<sup>th</sup> & 9.

Land broken stony hills;

Soil poor. No timber.

Date Jan'y 18<sup>th</sup> 1872

Township 13 North Range 5 N.  
 6th Salt River Meridian  
 T<sub>13</sub> North.

bet. secs. 31 <sup>1</sup>/<sub>4</sub> 32

var. 13°40' East

40.00 Set a <sup>1</sup>/<sub>4</sub> sec. cor. stone 12 x  
 12 x 3 in. as per instructions  
 No trees near.

80.00 Set a stone 18 x 10 x 8 in. as  
 per instructions for the cor  
 to sections

29. 30. 31 <sup>1</sup>/<sub>4</sub> 32.

No trees near.

Land broken <sup>by</sup> rocky  
 Soil poor.

No timber.

102

Township 13 North. Range 5 N.  
Gila & Salt River Meridian

R. East. on a random line bet. secs

29<sup>1/4</sup> 32.

var. 13°40' East.

40.00 Set a tem. 1/4 sec. cor. post.

80.124 Intersect the N. & S. Line at the  
cor. to secs 28. 29. 32<sup>1/4</sup> 33.

from which cor. I run

N East. on true line bet. secs 29<sup>1/4</sup> 32.

var. 13°40' East

40.07 Set a 1/4 sec. cor. stone 12 x

10 x 10 in. as per instructions

No trees near.

80.124 The cor. to secs.

29. 30. 31<sup>1/4</sup> 32.

Land broken

Oil 3<sup>rd</sup> rate

No timber.



Township 13 North, Range 5 W.

6th & Salt River Meridian

As West. on random lumber sec.

30<sup>th</sup> & 31.

var. 13° 40' East

30.00 Deep gulch runs N.E.

40.00 Set a 1/4 sec. cor. post.

79.86 Intersect the N. boundary line  
13 links S. from the cor. to sec

30.31.25<sup>th</sup> & 36. from which

cor. run

S. 89° 54' E. on true line bet. secs

30<sup>th</sup> & 31.

var. 13° 40' East

39.86 Set a 1/4 sec. cor. stone 16 x 10  
x 10 in. as per instructions

No trees near.

79.86 The cor. to secs

29. 30. 31<sup>th</sup> & 32.

Land very broken<sup>nd</sup> & rocky  
Soil worthless

No timber.

Township 13 North. Range 5 N.

Eda & Salt River Meridian

No North. bet. secs 29<sup>1</sup>/<sub>4</sub> & 30.  
var. 13° 40' East

33.20 Set a gulch runs N.E.

40.00 Set a 1/4 sec. cor. stow 14 x  
12 x 10 in. as per instructions  
No trees near.

80.00 Set a stow 14 x 12 x 8 in. as  
per instructions for the  
cor. to secs.

19.20.29<sup>1</sup>/<sub>4</sub> 30.

No trees near  
Sand broken rocky hills  
Drill poor.  
No timber.

Township 13 North, Range 5 N.  
Gila and Salt River Meridian

No. East. corner line bet. secs  
20 <sup>1</sup>/<sub>4</sub> 29.

var. 13° 41' East  
46.11 Set a cen. <sup>1</sup>/<sub>4</sub> sec. cor. post.  
81.75 Intersect the N. <sup>1</sup>/<sub>4</sub> S. Line 14  
links S. from the cor. to sec  
20.21.28 <sup>1</sup>/<sub>4</sub> 29. from which cor. run  
S. 89° 54' N. in true line bet. secs  
20 <sup>1</sup>/<sub>4</sub> 29.

var. 13° 40' East  
46.12. Set a <sup>1</sup>/<sub>4</sub> sec. cor. stone 15 x 10  
x 6 in. as per instructions

No trees near.  
80.25 The cor. to sec  
19.20.29 <sup>1</sup>/<sub>4</sub> 30.

Land broken rocky foot hills  
Soil 3<sup>rd</sup> rate.

No timber.

406

Township 13 North Range 5 N.

Gila Salt River Meridian

Rs West. on random line bet. secs. 19<sup>th</sup> & 30<sup>th</sup>  
var. 13°40' East

40.00 Set a 1/4 sec. cor. post.

57.50 Set rocky ravine runs N.E.

80.00 Intersect the N boundary 1/4  
m. S. from the cor. to secs.  
19.30. 24<sup>th</sup> & 25. from which  
cor. drawnS. 89°53' E. on true line bet. secs  
19<sup>th</sup> & 30.

var. 13°40' East

40.00 Set a 1/4 sec. cor. stone 14 x 10  
x 8 in. as per instructions

No trees near.

80.00 The cor. to secs 19.20. 29<sup>th</sup> & 30

Land broken rocky hills

Soil worthless.

No timber.

Township 13 North. Range 5 N.

Gila & Salt River Meridian

No North bet. secs. 19<sup>th</sup> & 20  
var. 13°40' East

18.60 Deep rocky gulch runs N.E.

40.00 Set a  $\frac{1}{4}$  sec. cor. stone 14 x 10 x  
5 in. as per instructions  
No trees near.

50.00 Set a stone 16 x 10 x 8 in.  
as per instructions for the  
cor. to sections  
17, 18, 19<sup>th</sup> & 20.

No trees near.

Land broken rocky hills  
Soil poor.  
No timber.

Township 13 North Range 5 N.  
Gila <sup>and</sup> Salt River Meridian

To East. on random line bet. secs. 17 <sup>and</sup> 20.

var. 13' 40" East

40.00 Set a tin. <sup>1</sup>/<sub>4</sub> sec. cor. post.

80.12 Intersect the N. <sup>and</sup> S. Line at  
the cor. to secs 16. 17. 20 <sup>and</sup> 21  
from which cor. I run —  
N East. on true line bet. secs.

17 <sup>and</sup> 20.

var. 13' 40" East

40.06 Set a <sup>1</sup>/<sub>4</sub> sec. cor. stone 18 x 10 x 6  
in. as per instructions

No trees near.

80.12 The cor. to secs  
17. 18. 19 <sup>and</sup> 20.

Land broken <sup>and</sup> rocky.

Soil poor.

No timber.

Township 13 North Range 5th.  
Gila & Salt River Meridian

To The lands in sections 5, 6.

7, 8, 18<sup>th</sup> & 19 are broken rocky  
and worthless, so I do not  
run the line between sections  
18<sup>th</sup> & 19; but run

North, bet. secs 17<sup>th</sup> & 18  
var. 13°40' East

17.00 Dip rocky ravine runs E.

40.00 Set a 1/4 sec. cor. stone 14x10x  
8 in. as per instructions

No trees near.

42.50 Rocky ravine runs E.

80.00 Set a stone 16x10x5 in. as  
per instructions for the cor.  
to secs. 7, 8, 17<sup>th</sup> & 18.

No trees near.

Land broken and rocky  
Soil poor.

No timber.

Township 13 North Range 5 N.  
Gila Salt River Meridian

to East, on random line bet. secs  
8<sup>th</sup> & 1<sup>st</sup>.

var. 13°40' East

40.00 Set a tem. 1/4 sec. cor. post.

62.00 Creek 10 links wide runs North  
in a deep rocky canon.

80.20 Intrench the N. 1/4 S. 1<sup>st</sup>  
links N. from the cor. to secs  
8, 9, 16<sup>th</sup> & 1<sup>st</sup> from which cor. run  
N. 89°54' E. on true line bet. secs  
8<sup>th</sup> & 1<sup>st</sup>.

var. 13°40' East.

40.10 Set a 1/4 sec. cor. stone 14 x  
12 x 8 in. as per instructions

No trees near.

80.20 The cor. to secs

14, 8, 1<sup>st</sup> & 18.

Land broken and rocky  
Soil worthless.  
No timber



Township 13 North Range 5 N.  
6th S. Salt River Meridian

No. And the unsurveyed land  
in the N. W. corner of this  
Township are very broken  
and covered with granite  
boulders and deep im-  
passable rocky cañons,  
so I deem it unnecessary  
to extend the subdivision  
lines any farther in this  
Township.

Jan'y 19<sup>th</sup> 1872

Date

(over)

## General Description

This Township embraces the northern portion of Keweenaw Valley, and the bottom lands are of superior quality for agricultural purposes and most of the surveyed lands on the foot hills afford good pasturage.

Water is easily obtained by digging wells from 30 to 40 feet deep on any part of the valley.

The valley is mostly under cultivation and the farmers have given their whole attention to the culture of corn <sup>the</sup> hay.

W. J. Freeman  
of Dep. Surveyor

## List of Names.

A List of the Names of the individuals employed to assist in running, measuring, or marking the lines and corners described in the foregoing Field Notes of the Subdivision Lines of Townships 13 N. Ranges 4 & 5 W. 6th and Salt River Meridian

showing the respective capacities in which they acted.

|               |             |
|---------------|-------------|
| Geo. Ellwood  | Compassman. |
| Joseph Jewell | Chainman.   |
| Yord Tucker   | Chainman.   |
| James Baker   | Fireman.    |
|               | Blaylock    |



Final Oaths of Assistants.

We hereby certify that we assisted Solomon  
W. Foreman Deputy Surveyor, in surveying  
the Subdivision lines of Townships  
13 N. Ranges 4 & 5 W. Gila and  
Salt River Meridian

and that said Survey has been in all respects, to the  
best of our knowledge and belief, well and faithfully sur-  
veyed, and the boundary monuments planted according to  
the instructions furnished by the Surveyor-General.

George Ellwood  
Fred Snider  
Joseph Samuel  
James Balle

Subscribed & Sworn to before me  
this 21<sup>st</sup> day of February 1872  
J. A. Anderson  
Probate Judge  
Pima Co

*Final Oath of Deputy Surveyor.*

I, *Salomon W. Foreman*  
Deputy Surveyor, do solemnly swear that, in pursuance  
with a contract with *John Nasson*  
United States Surveyor-General for Arizona, bearing date  
the 14<sup>th</sup> day of October 1871, I have well, faithfully  
and truly, in my own proper person, and in strict con-  
formity with the instructions furnished by the Surveyor-  
General, the Surveying Manual, and the laws of the  
United States, surveyed all those parts or portions of  
the Subdivision lines of Town-  
ships 13 N. Ranges 4 & 5  
W. Gila and Salt River  
Meridian.



as are represented in the foregoing Field Notes as having

We been surveyed under my directions; and I do further  
We solemnly swear that all the corners of said surveys have  
The been established and perpetuated in strict accordance with  
the Surveying Manual and printed instructions, and that  
The foregoing are the true and original Field Notes of such  
Survey.

Solomon W. Foxman  
U. S. Deputy Surveyor.

best  
very  
the

Subscribed and sworn to before me, this 21<sup>st</sup>  
day of February 1872

Geo. Anderson }  
Probate Judge }  
Quincy Co. }



So  
The

Surveyor General's Office  
Des Moines, Ia.

March 20, 1872

The foregoing field notes of the survey of the subdivision lines of Township 13 N. Ranges 4<sup>th</sup> & 5<sup>th</sup> W. of the Gila and Salt River Base and Meridian lines in the Territory of Arizona, executed by S. H. Foreman, U. S. Dep. Surveyor, under his contract dated October 14, 1871, having been critically examined, the necessary correction and explanations made, the said field notes and the surveys they describe are hereby approved.

John H. Brown  
Surveyor General