

S. 14 N., R. 2 N., Page 1.
S. 14 N., R. 3 N., Page 58

1038

BOOK 1038

No. 1038

Field Notes

of the Survey of the Sub-
division lines of Township
14 N., Ranges 2 & 3 W.
Gila & Salt River Meridian
Arizona.

By S. W. Foreman Dep. Sur.
Under Contract of May 29th 1890.
Survey commenced Aug 16 "
" Completed " 29 "

No. 1038

Preliminary Oaths of Assistants.

I, _____ do solemnly
 swear that I will well and truly perform the duties of
 Compassman, according to instructions given me, and to
 the best of my skill and ability.

Subscribed and sworn to before me, this _____ day of

187

U. S. Deputy Surveyor.



We, Joseph Ferris and
 J. L. Harris

do solemnly swear that we will faithfully execute the duties
 of Chain Carriers; that we will level the chain upon uneven

ground, and plumb the tally pins, whether by sticking or dropping the same; that we will report the true distance to all notable objects, and the true length of all lines, that we will assist in measuring, to the best of our skill and ability.

Joseph P. Pencil
J. L. Harris

Subscribed and sworn to before me, this 10th day of
June 1871.

J. C. Mc Caffry
~~Notary Public~~
Notary Public



We, James Daly & Geo. W. Carr
 do solemnly swear that ^{we} will well and truly perform the
 duties of *Apprentice & Glazeman*
 according to instructions given ^{us} ~~me~~, and to the best of ^{our} ~~my~~
 skill and ability.

James Daly
 Geo. W. Carr

Subscribed and sworn the be before me, this 10
 day of June 1871

J. P. Mc Caffry
~~Notary Public~~
 Notary Public



Field Notes

of

The Subdivision Lines ofTownship 14 North, Range 2 WestGila and Salt River MeridiansArizona TerritoryBy S. W. ForemanDeputy Surveyor

Under his contract of.

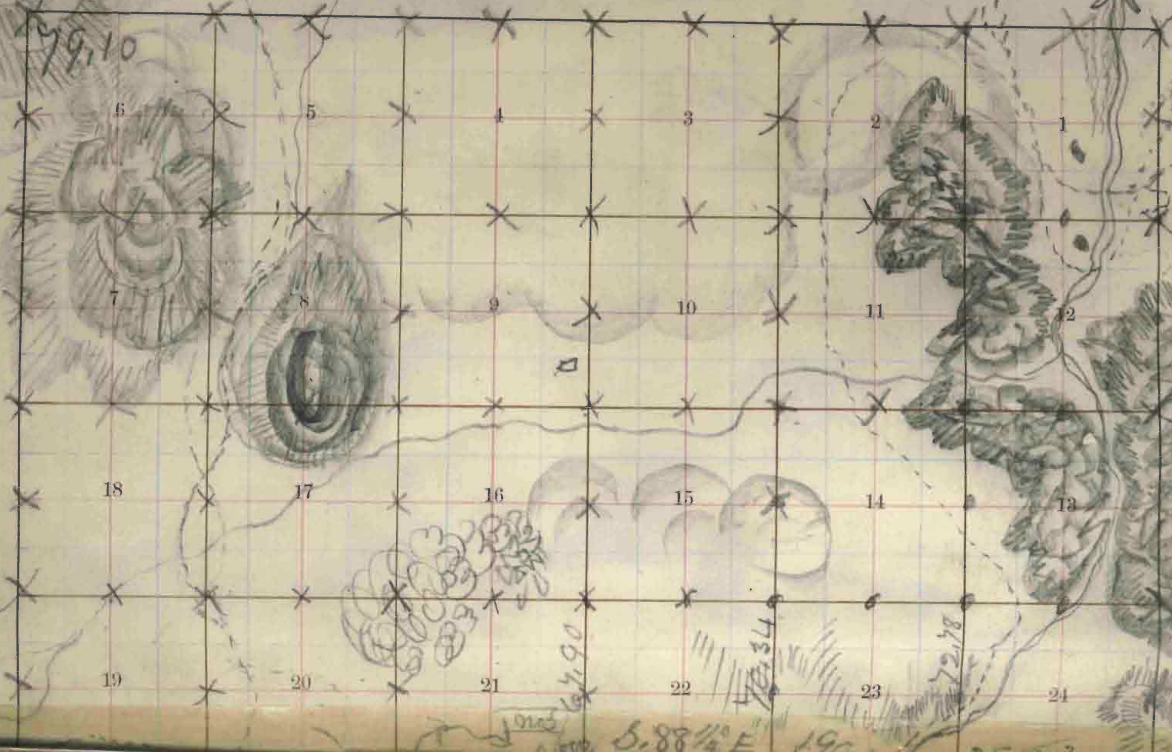
Survey commenced.

Survey completed.

TOWNSHIP 14 N. RANGE 2 West, MERIDIAN

Var. 13°56' E

BOOK 1038



Bancroft's Blank, Township Plot. A. L. Bancroft & Company, 721 Market St., San Francisco.

Meridian Line,

Base Line,

Standard Line,

Township Lines,

Section Line,

Meander Lines,

Office Work,

Ranch Lines Re-surveyed,

Prescott.

Var. 13°48' East

BOOK 1038

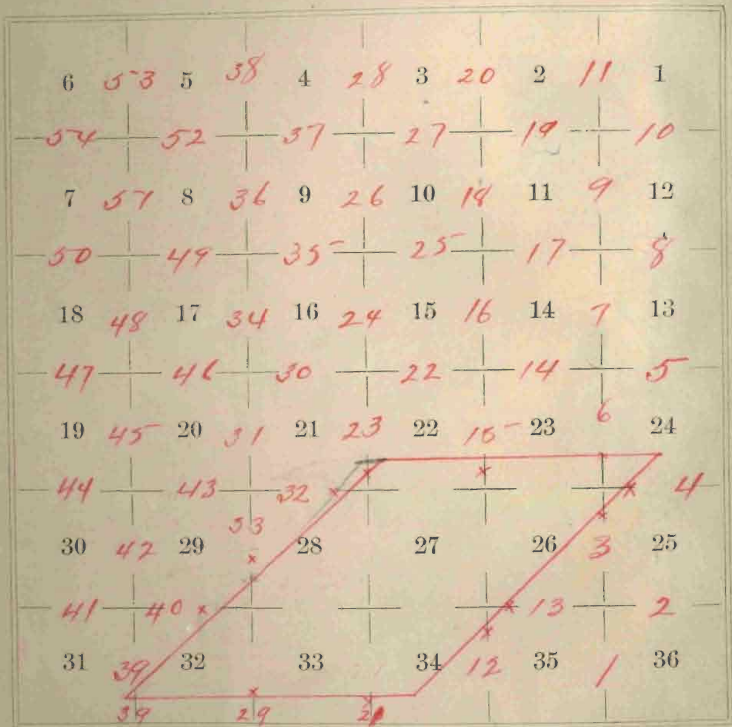
Index for T. 14N, R. 3W. on Page 58

19

BOOK 1038

4-674.

Township **14N**, R. **2W**, Secs **R.B. & M.**



986b5m9-01

Township 14 North, Range 2 West.

Gild^{and} Salt River Meridian

From the corner to sections 1, 2, 35 and 36, on the south boundary of the Township. - A run -

North, between sections 35^{and} 36.

var. $13^{\circ}45'$ East.

(as per east boundary, as run by myself)

40.00 Set a 1/4th section corner Post in a mound and file as per instructions. No trees near.

75.00 Road bears east and west.

80.00 Set a stone $14 \times 10 \times 10$ inches in a stone mound as per instructions, for the corner to sections 25, 26, 35^{and} 36.

No trees near.

Land, north slope of north end of hill.

Soil 2nd rate. No timber.

Oak brush in spots.

Townships 14 North, Range 2 West.

Gila and Salt River Meridian

40.00 East, on Random line, between sections 25th and 36.

ran $13^{\circ} 45'$ East.

(as per east township boundary)

40.00 Set a temporary $\frac{1}{4}$ section corner Post.

53.00 Road bears north and south.

55.00 Dry creek, 5 links wide runs north.

80.00 Intersect the east boundary line at the corner to sections 25, 36.

30th and 31. - from which corner, Run West, on true line between sections 25th and 36.

ran $13^{\circ} 45'$ East.

40.00 Set a $\frac{1}{4}$ section corner Post in a mound and pits as per instructions

No trees near.

80.00 The corner to sections 25, 36, 35th and 36.

Land, rolling, low hills.

Soil 3rd rate

No timber

Township 14 North, Range 2 West

Old Salt River Meridian

Line North, between sections 25 and 26.

Var. $13^{\circ}45'$ East

10.00 Round knob, 50 feet high.

40.00 Set a $\frac{1}{4}$ section corner stone $18 \times 10 \times 10$ inches as per instructions, - from which a Pine 10 inches diameter bears north 10° East 20 links distant.

No other tree near.

62.87 Intersect the east boundary of the Fort Whipple U. S. Military Reservation and set a post as per instructions for the corner to fractional sections 25 and 26, - from which the north east corner Post, marked U. S. M. R. No. 2., bears north $46^{\frac{3}{4}}$ East, 34.43 chains distant.

Land rolling, soil 2^o rate
No timber.

Township 14 North, Range 2 West
Gila ^{and} Salt River Meridian

From the corner to sections 24, 25, 19^{to} 30
on the east boundary as the line will reach
the Military Reservation in less than 80
chains. Run.

West, on true line between sections 24^{to} 25.
Var. 13° 45' East

3.00 Road bears north east and south west.

9.00 Racine runs north west.

40.00 Set a $\frac{1}{4}$ section corner Post in a
mound and pits as per instructions.
No trees near.

1.87 Intersect the east boundary of the
U. S. Military Reservation and set
a Post as per instructions for the
corner to fractional sections 24^{to} 25
from which the north east corner, No. 2,
of the Reservation bears north 46^{3/4}
east, 9.43 cho. distant.

Land rolling, Soil 2nd rate. No timber.

Township 14 North Range 2 West
Gila and Salt River Meridian

- From the corner to sections 13, 24, 18th & 19th on the east boundary line. I run West on true line between sections 13th & 24th var. 13° 45' East
- 0.00 Leave rocks and enter bottom land.
- 30.00 Granite creek, 4 chains wide and runs north east. — enter cornfield
- 40.00 Put a $\frac{1}{4}$ section corner stone 14 x 10 x 8 inches in a mound and pits as per instructions. No trees near.
- 49.00 House 50 links south of line.
- 50.38 Fence bears northth and south and leave cornfield.
- 51.00 Road bears north and south.
- 60.00 Ascending grounds.
- 80.00 Put a stone 14 x 10 x 8 inches as per instructions for corner to sections 13, 14, 23rd & 24. No trees near. Land nearly level. Soil 1st rate. No timber.

Township 14 North, Range 2 West
Gila and Salt River Meridian

Chs. South, between sections 23rd & 24.

Var. $13^{\circ} 45'$ East

- 40.00 Set a $\frac{1}{4}$ section corner stone $16 \times 10 \times 10$ inches in a stone mound as per instructions. No trees near.
- 45.00 Road bears north east and south west.
- 58.00 Granite creek runs north west.
- 62.00 Right bank of granite creek and enter cornfield.
- 72.78 Intersect the north boundary of the U. S. Military Reservation and set a post as per instructions for the corner to fractional sections 23rd & 24. from which, the north east corner post No. 2, of U. S. Military Reservation bears south $88^{\circ} 45'$ East, 25 chains distant. Land, rolling and level. Soil 1st rate. No timber

Township 14 North, Range 2 West
Gold and Salt River Meridian

- From the corner to sections 13, 14, 23rd & 24th
I run.
North, between sections 13rd & 14th.
Var. $13^{\circ} 45'$ East
- 27.00 Enter level land, bears north west ^{to} south east.
- 36.00 Road bears north west and south east
- 37.00 Fence bears north west and south east.
and enter cornfield.
- 40.00 Set a 4th section corner Post, in a mound
and Pits as per instructions. - No trees near.
House bears north west, 20 chains distant.
- 61.00 Leave cornfield and enter rocks.
- 80.00 Set a stone $18 \times 10 \times 8$ inches as per instruc-
tions, for the corner to sections 11, 12, 13rd & 14th.
No trees near.
- Land level.
- Coil 1st rate, excepting the last 19 chains
rocky and worthless.
- No timber.

Township 14 North, Range 2 West
Gila and Salt River Meridian

- Chs East, on random line, between sections 12nd & 13.
var. $13^{\circ}45'$ East
- 40.00 Set temporary 1st section corner Post.
- 58.00 Granite Creek in a rocky cañon, 2 chains wide, runs north.
- 80.00 Intersect the east boundary at the corner to sections 12, 13, 7th & 18th, from which corner, I run —
West, on true line between sections 12nd & 13.
var. $13^{\circ}45'$ East
- 40.00 Set a 1st section corner Post in a stone mound as per instructions.
No trees near.
- 80.00 The corner to sections 11, 12, 13th & 14.
- Land covered with massive granite boulders.
No soil. No timber.

Township 14 North, Range 2 West
Gila and Salt River Meridians

No North, between sections 11^{and} 12,
var. $13^{\circ}45'$ East

26.00 Willow creek, 20 links wide runs east.

40.00 Set a '44 section corner Post, in a stone
mound as per instructions.

No trees near.

80.00 Set a stone $14 \times 8 \times 8$ inches as per instruc-
tion for the corner to sections,

1, 2, 11^{and} 12.

No trees near.

Land covered with massive granite
rocks.

No soil and no timber.

Aug. 16
July 20th, 1871.

Township 14 North. Range 2 West
Gila and Salt River Meridian

- Go East, on random line, between sections 1st and 12.
- var $13^{\circ} 45'$ East
- 27.00 Leave rocks and enter cornfield.
- 40.00 Set a temporary $\frac{1}{4}$ section corner Post.
- 57.00 Grande creek 2 chains wide runs north.
- 80.00 Intersect the east boundary at the corner to sections 1, 12, 6th and 7.
- from which corner, I run —
- West, on true line between sections 1st and 12.
- var. $13^{\circ} 45'$ East
- 40.00 Set a $\frac{1}{4}$ section corner Post, in a mound and sets as per instructions.
- No trees near.
- 80.00 The corner to sections 1, 2, 11, 12.

Land level

Soil 1st and 3rd rate

No timber.

Township 14 North, Range 2 West
 Tada and Salt River Meridian

Ch North, on random line between sections 1 and 2.
 var. $13^{\circ} 45'$ East

40.00 Leave rocks and set a temporary $\frac{1}{4}$ section
 corner Post. - line of rocks bears north
 west and south east.

51.00 Road bears ^{South} north west and ^{North} south east.

80.00 Intersect the north boundary line
 at the corner to sections 1, 2, 35 and 36.
 from which corner I run, -

South, on true line between sections 1 and 2.
 var. $13^{\circ} 45'$ East.

40.00 Set a $\frac{1}{4}$ section corner Post in stone
 mound and Pits.

An Oak, 6. in. diam. bears west 25 links distant
 do . 6. " " " north 49° west, 43 links distant

80.00 The corner to sections 1, 2, 11 and 12.

Land level and rolling,
 Soil 1st and 3rd rate. No timber.

Township 14 North. Range 2 West
Gila and Salt River Meridian

40 North, between sections 34^{and} 35.
var. $13^{\circ}45'$ East

40.00 Put a $\frac{1}{4}$ section corner Post on a mound
and Pile as per instructions.

No trees near.

67.60 Intersect the east boundary line of
the military reservation and set
a Post as per instructions, for the
corner to fractional sections 34^{and} 35
and from which the southeast
corner Post marked U. S. M. R.
No. 1., bears south $46^{\frac{3}{4}}^{\circ}$ West.,
70.74 chains distant.

Land sloping to the north.
Soil 2nd rate. No timber.

Township 14 North, Range 2 West
 Tila ⁴⁰ Salt River Meridian

- Chs From the corner to sections 25, 26,
 35 ⁴⁰ 36. I run —
 West between sections 26 ⁴⁰ 35.
 var. 13° 45' East
- 19.00 Road runs north west and south east.
 35.00 Ascend point of hill, north ⁴⁰ and south.
 40.00 Set a ¹/₄ section corner Post in a
 mound and pits as per instructions
 No trees near.
- 48.00 Top of hill 100 feet high, bears north and south
 64.00 Base of same.
 67.00 Road bears north and south.
 67.60 Intersect the east boundary of the
 Military Reservation and set a Post
 as per instructions, for the corner to
 fractional sections 26 ⁴⁰ 35, and
 from which the corner to fractional
 sections 34 ⁴⁰ 35, bears south 46 ³/₄ ^{W.} East
 18.07 chains distant.
 Land rolling. Soil 1st rate. No timber.

Township 14 North, Range 2 West
Gila and Salt River Meridian

Sho From the corner to sections
13, 14, 23rd and 24, I run —
West, on true line between sections 14th & 23rd.
Var. $13^{\circ} 45'$ East

40.00 Set a $\frac{1}{4}$ section corner Post in
a mound and pits as per instructions.
No trees near.

80.00 Set a post in a mound and pits
as per instructions, for the corner
to sections 14, 15, 22nd and 23.
No trees near.

Land rolling. Oil 2^d rate
No timber.

Township 14 North. Range 2 West
 6th and Fall River Meridian

No. From the corner to sections
 14, 15, 22nd and 23. Iron
 South. between sections 22nd and 23.
 var. $13^{\circ}45'$ East
 40.00 Set a $\frac{1}{4}$ section corner Post in
 a mound and pits as per instructions
 No trees near.

70.34 Intersect the north line of the
 Military Reservation and set a post
 as per instructions, for the corner
 to fractional sections 22nd and 23,
 and from which the corner to
 fractional sections 23rd and 24 bears
 south $88\frac{1}{4}^{\circ}$ East. 80 chains distant.

Land rolling.

Soil 2^d rate

No timber.

Township 14 North. Range 2 West.

1st Sec. Salt River Meridian

1/2 Sec. North. between sections 14th and 15th
 Var. 13° 45' East

17.00 Descending ground.

40.00 Set a 14th section corner stone
 18x10x10 inches in a stone mound
 as per instructions.

No trees near.

43.00 Entire level land bears east and west.

80.00 Set a stone 24x16x8 inches in
 a mound and pits as per
 instructions for the corner
 to sections 10, 11, 14th and 15th.

No trees near.

Land rolling and then level.

Roll 2^d and 1st rate

No timber.

Township 14 North, Range 2 West
 Gila and Salt River Meridian

Chs East, on a Random line between sections
 11 and 14.
 Var $13^{\circ}45'$ East
 40.00 Set a temporary $\frac{1}{4}$ section corner post.
 42.00 Road bears north west and south east.
 43.00 A house 10 links north of line.
 51.00 Entire Granite boulders, bears north and south.
 80.10 Intersect the north and south line 9 links
 south of the corner to sections 11, 12, 13 and 14,
 from which corner I run
 South $89^{\circ}56'$ West, on true line between
 sections 11 and 14.

Var. $13^{\circ}45'$ East
 40.05 Set a $\frac{1}{4}$ section corner stone $16 \times 12 \times 8$
 inches as per instructions. No trees near.
 80.10 The corner to sections 10, 11, 14 and 15.

Land level. Soil 1st and 2^d rate.
 No timber.
 Aug. 17
 July 21st 1871

Townships 14 North, Range 2 West
Gila and Salt River Meridian

Chs North, between sections 10 ^{and} 11.

Var. $13^{\circ} 45'$ East

- 7.50 Road bears east and west.
 8.00 Willow creek 40 links wide runs east.
 10.00 Enter cornfield, bears east and west and
 a house and barn 15 chains east of line.
 40.00 Set a $\frac{1}{4}$ section corner stone $18 \times 14 \times 8$
 inches as per instructions. No trees near.
 54.30 Leave cornfield, bears east and west.
 55.00 Hay road bears north east and south west.
 80.00 Set a stone $14 \times 10 \times 6$ inches as per
 instructions, for the corner to sections
 2, 3, 10 ^{and} 11. No trees near.

Land level. Soil 1st rate
 No timber.

Township 14 North, Range 2 West
Gila and Salt River Meridian

As East, on a random line between sections 2nd and 11.
Var. $13^{\circ}45'$ East

13.25 Road bears north and south

20.00 do. do. do.

40.00 Set a temporary $\frac{1}{4}$ section corner post.

45.30 Granite boulders, bears north^{ly} and south^{ly}.

80.08 Intersect the north and south line
18 links north of the corner to sections
1, 2, 11th and 12, from which corner, I run
North $89^{\circ}52'$ West, on true line between
sections 2nd and 11.

Var $13^{\circ}45'$ East

40.04 Set a $\frac{1}{4}$ section corner stone $18 \times 10 \times 10$
inches as per instructions. No trees near.

80.08 To the corner to sections 2, 3, 10th and 11

Land level. Soil 1st rate, except
the east half, which is granite
boulders. No timber

Township 14 North, Range 2 West.
 Gila ^{4th} Salt River Meridian

No North, on random line between sections 2nd & 3.

Sac. $13^{\circ} 45'$ East

- 20.00 Enter cornfield, bears east and west.
 35.00 Leave same, bears north east and south west.
 40.00 Set a temporary $\frac{1}{4}$ section corner Post.
 80.15 Intersect the north boundary line 12 links
 East of the corner to sections 2, 3, 34 & 35.
 from which corner I run
 South, $0^{\circ} 05'$ East, on true line between
 sections 2 and 3.
 Sac. $13^{\circ} 45'$ East —
 40.15 Set a $\frac{1}{4}$ section corner Post in a mound
 and Pits as per instructions. No trees near.
 80.15 The corner to sections 2, 3, 10th & 11.

Land level. Soil 1st rate
 No timber.

Township 14 North. Range 2 West
 Gila and Salt River Meridian

Sec North. between sections 33rd and 34th.
 Sec. $13^{\circ} 45'$ East

5.40 Road runs east and west.

20.00 Intersect the south boundary of the
 U. S. Military Reservation and
 set a post as per instructions for the
 corner to fractional sections 33rd and 34th.
 and from which the south east corner
 of said reservation bears south
 $88\frac{1}{4}^{\circ}$ East, 28.48 links distant

The south line of the Reserva-
 tion is also the north boundary
 of the town of Prescott and several
 valuable houses are inside the
 boundaries of said Reservation.

Township 14 North Range 2 West
 22nd Salt River Meridian

From the corner to sections 14. 15.

22nd 23. 1 run —

West on true line between sections 15th & 22.

Var. $13^{\circ}45'$ East

40.00 Set a 1/4 section corner post in a mound
 and pits as per instructions.

No trees near.

80.00 Set a post in mound and pits
 as per instructions for the corner
 to sections 15. 16. 21st & 22.

No trees near.

Land, rolling table lands
 Soil 2^d rate. Good grass
 No timber.

Township 14 North. Range 2 West
 Gila and Salt River Meridian
 1/2 South. on true line between sections 21st & 22.

Var. $13^{\circ}45'$ East

40.00 Set a $1/4$ section corner Post on a mound and pits as per instructions.

No trees near.

67.90 Intersect the north boundary line of the Military Reservation and set a Post as per instructions for the corner to fractional sections 21st and 22. and from which the north west corner No. 3. of the Reservation bears north $88\frac{1}{2}^{\circ}$ West 5 chains distant

Land. rolling

Soil 2^o rate.

Aug. 18

No timber.

July 22^o 1871.

Township 14 North, Range 2 West

Gila and Salt River Meridian

40 North, between sections 15 and 16.

Var. $13^{\circ} 45'$ East

40.00 Set a $\frac{1}{4}$ section corner stone $18 \times 8 \times 6$ inches as per instructions. No trees near.

74.80 Willow creek 30 links wide runs east (dry)

80.00 Set a Post in a mound and pits as per instructions for the corner to sections 9, 10, 15 and 16, from which.

a Double Ash 18 inches diameter bears south 3° East, 200 links distant.

a Black Walnut, 10 inches diameter bears south 10° west, 173 links distant.

No other tree near.

a house bears north 11° west, 15 chains dist.

Land rolling. Soil 2nd and 1st rate.

No timber, except a few scattering trees on the creek.

Township 14 North. Range 2 West
Gila ^{and} Salt River Meridian

Go East, on random line between sections
10 ^{and} 15.

Var. $13^{\circ}45'$ East.

- 32.00 A house 5 chains north of line.
40.00 Set a temporary $\frac{1}{4}$ section corner Post.
A house bears north, 65 links distant.
41.00 Willow Creek, 50 links wide runs north east.
65.00 Leave cultivated land, north east ^{and} south west.

80.00 Intersect the north and south line at the
corner to sections 10, 11, 14 ^{and} 15.
from which corner, I run —

West, on true line between sections 10 ^{and} 15.

Var. $13^{\circ}45'$ East.

- 40.00 Set a $\frac{1}{4}$ section corner stone $14 \times 10 \times 8$
inches in stone mound as per instructions
No trees near.

80.00 The corner to sections 9, 10, 15 ^{and} 16.
Land level. Soil 1st rate
No timber.

Township 14 North, Range 2 West
Gela^{and} Salt River Meridian

Q. North, between sections 9^{and} 10.

Var. $13^{\circ}45'$ East

20.00 A house 1 chain west of line.

39.00 Leave cultivated land.

40.00 Set a section corner post in mound
and sets as per instructions
No trees near.

80.00 Set a post in a mound and sets
as per instructions for the corner to
sections 3, 4, 9, ^{and} 10.

No trees near.

Land level and rolling
Soil 1st rate. No timber.

Township 14 North, Range 2 West
Gila and Salt River Meridian

No East. on a random line between sections
3rd 10.

Bear 13° 45' East.

40.00 Set a temporary 1/4 section corner post.

80.20 Intersect the north and south line
6 links north of the corner to sections
2, 3, 10th and 11. from which corner I run.

N. 89° 57' West. on true line between sections
3rd 10.

Bear. 13° 45' East

40.10 Set a 1/4 section corner post in a
mound and pits as per instructions
No trees near.

80.20 The corner to sections 3, 4, 9th and 10.

Land level. Soil 1st rate
No timber.

Township 14 North, Range 2 West
Gila and Salt River Meridian

No North, on a random line between
sections 3rd & 4

Var. $13^{\circ} 45'$ East

40.00 Set a temporary $\frac{1}{4}$ section corner post.

80.20 Intersect the north boundary, 11 links
east of the corner to sections 3, 4,
33rd & 34, from which corner I run.

South $0^{\circ} 5'$ East, on true line between
sections 3rd & 4.

Var. $13^{\circ} 45'$ East.

40.20 Set a $\frac{1}{4}$ section corner post in
a mound and set it as per instru-
tions. No trees near.

80.20 The corner to sections 3, 4, 9th & 10.

Land gently rolling.

Soil 1st rate for grass.

No timber.

Township 14 North, Range 2 West
Gila and Salt River Meridian

As North, between sections 32 ^{and} 33.

Sec. $13^{\circ}45'$ East

6.00 Road runs northeast and southwest.

18.00 Crust 10 links wide runs northeast.

22.44 Intersect the south boundary of
the Military Reservation, and set
a post as per instructions for the
fractional sections 32 ^{and} 33,
and from which the corner to
fractional sections 33 ^{and} 34
bears south $88^{\circ}4'$ East, 80 chains distant.

Land a little rolling and
stony - granite boulders.

Soil good.

Timber, Pine, Juniper and
Oak.

Township 14 North, Range 2 West
Gila and Salt River Meridian

Chs From the corner to sections 15, 16,
21^{and} 22, I run:—
West, on true line between sections
16^{and} 21.

Var. $13^{\circ}45'$ East

40.00 Set a $\frac{1}{4}$ section corner post in a
mound and pile as per instructions.
No trees near.

80.00 A Juniper tree, 10 inches diameter
and marked as per instructions
for the corner to sections
16, 17, 20^{and} 21.

No other trees near.

Land, rolling, grassy low hills.
Soil 1st rate.

Some scattering Pine and
Juniper trees and Oak brush.

Township 14 North, Range 2 West
Gila and Salt River Meridian

Chs South, between sections 20th and 21st
Sec. 13° 45' East.

21.00 Ravine runs north east.

40.00 Set a 1/4 section corner Post in a mound and pit: as per instructions, a Pitch Pine 8 inches diameter bears south 48 links distant.

No other trees near.

74.50 Old road runs east.

78.00 Fence east^{ward} west and enter cornefield.

80.00 Set a post in mound and pit: as per instructions for the corner 20, 21, 28th and 29.

No trees near.

Land rolling. Soil 1st^{and} 2nd rate.
Scattering Pine timber and
Oak brush.

Aug. 19
July 24th 1871.

Township 14 North, Range 2 West
Gila and Salt River Meridian

- Chs. From the corner to sections 20, 21
28th & 29. I run—
East, on true line between sections 21st & 28.
Sca 13° 45' East.
- 32.00 Leave cornfield bears north and south.
- 40.00 Set a 1/4 section corner post in a
mound and pits as per instructions.
No trees near.
- 62.08 Intersect the west boundary line
of the Military Reservation and
set a Post as per instructions
for the corner to fractional sections
21st & 28 and from which the north
west corner No. 3. of the Reservation
bears North 46^{3/4}° East. 17.87 chains distant.

Land rolling and good grass.
Soil 2^o rate
Timber. Pine and Juniper.

Township 14 North, Range 2 West
Yala and Salt River Meridian

As From the corner to sections
20, 21, 28th & 29, I run —
South, between sections 28th & 29,
Sae. $13^{\circ} 45'$ East —

24.40 Fence and leave cornfield — east^{ly} west.

25.00 House 50 links east of line.

40.00 Set a $\frac{1}{4}$ section corner post in a
mound and pits as per instructions.
No trees near.

58.40 Intersect the west boundary line
of the Military Reservation and
set a post as per instructions
for the corner to fractional sections
28th & 29, from which the corner
to fractional sections 21st & 28
bears North $46\frac{3}{4}^{\circ}$ East, 85.22 chains
distant.

Land gently rolling.

Soil good.

Some scattering Pine and Juniper.

Township 14 North, Range 2 West
Gila and Salt River Meridian

Ch^o North, between sections 16th and 17.
Sec. 13° 45' East

20.00 Leave timber and enter rocky land.

25.00 Ravine runs north east.

40.00 Set a '4 section corner post in a
stone mound as per instructions.
No trees near.

48.00 Willow creek 20 links wide runs east.

80.00 Set a stone 18x10x8 inches in a
stone mound as per instructions
for the corner to sections
8, 9, 16th and 17.

No trees near.

Land rolling and stony,
Soil good.

Some scattering, Pine and Juniper.

Township 14 North, Range 2 West
Gila and Salt River Meridian

Chs East, on random line between sections 9th & 16.
Var. $13^{\circ}45'$ East.

12.00 Enter coenfield, bears north east and south west.

40.00 Set a temporary $\frac{1}{4}$ section corner post.

80.00 Intersect the north and south line
at the corner to sections 9, 10, 15 & 16,
from which corner I run. —

West, between sections 9th & 16.

Var. $13^{\circ}45'$ East.

40.00 Set a $\frac{1}{4}$ section corner stone $16 \times 10 \times 6$
inches as per instructions.

No trees near.

A house bears north east 5 chains distant.

80.00 The corner to sections 8, 9, 16, & 17.

Land level. Soil 1st rate.

No timber.

Township 14 North, Range 2 West
Gila and Salt River Meridian

Sec. North, between sections 8th & 9.

Sec. $13^{\circ} 45'$ East-

25.00 Bluff bears east and west 150 feet high

40.00 Top of bluff and set a '44 section
corner stone $16 \times 10 \times 8$ inches in a
stone mound as per instructions.

No trees near.

51.00 Ravine runs north west.

80.00 Set a stone $14 \times 14 \times 14$ inches as per
instructions for the corner to sections
4, 5, 8th & 9. from which

a Juniper 24 inches diameter, bears
north 40° west, 136 links distant,

No other trees near.

Land rolling. Soil good for grass.

No timber

Township 14 North, Range 2 West
Gila and Salt River Meridian

Chs East, on a random line between
sections 4^{and} 9.

Var. $13^{\circ}45'$ Each

40.00 Set a temporary $\frac{1}{4}$ section corner post.

80.15 Intersect the north and south line
7 links north of the corner to section
3, 4, 9^{and} 10. from which corner
I run. —

North, $89^{\circ}57'$ West, on true line

between sections 4, 8, 9.

Var. $13^{\circ}45'$ Each

40.07 Set a $\frac{1}{4}$ section corner post in
a mound and pits as per instruc-
tions. No trees near.

80.15 The corner to sections 4, 5, 8^{and} 9.

Land level, Soil 2^o rate

No timber.

Township 14 North. Range 2 West
Gila and Salt River Meridian

Chs. North. on a random line between
sections 4^{and} 5.

Sar. $13^{\circ} 45'$ East.

- 37.00 Flat ravine runs north east.
40.00 Set a temporary $\frac{1}{4}$ section corner post.
80.10 Intersect the north boundary line
at the corner to sections 4, 5, 32^{and} 33.
from which corner, I run —
South. on true line between
sections 4^{and} 5.

Sar $13^{\circ} 45'$ East

- ¹⁶
~~40.00~~ Set a $\frac{1}{4}$ section corner post in
a mound and pits as per instruc-
tions. No trees near.
80.10 The corner to sections 4, 5, 8^{and} 9.
Land gently rolling.
Soil 3rd rate. No timber.

Aug. 21

July - 25th 1871.

Township 14 North. Range 2 West
Gila and Salt River Meridian

Chs North, between sections 31^{and} 32.

Sec. 13° 45' East.

- 24.88 Intersect the South Boundary of the Military Reservation and set a post as per instructions, from which the south west corner of said Reservation bears North 88 ¹/₄ West. 1.52 chains distant.
- 26.35 Intersect the north west boundary line of said Reservation and set a post as per instructions from which the south west corner of the Reservation (No. 4) bears south 46 ³/₄ West. 2.08 chains distant.
- 40.00 Set a post in a mound and pile as per instructions, for ¹/₄ section corner. No trees near.
- 80.00 Set a stone 18 x 10 x 8 inches, as per instructions for the corner to sections 29, 30, 31^{and} 32. No trees near.
Land rolling ^{to} stony. Soil 2nd rate.
Some Pine and Juniper timber.

Township 14 North, Range 2 West
Gila and Salt River Meridian

Ch^o East, on true line between sections 29th & 32nd.
Bearing $13^{\circ} 45'$ East

40.00 Set a $\frac{1}{4}$ section corner stone
16 x 10 x 6 inches as per instructions

57.04 Intersect the north west ^{boundary} corner of
the Military Reservation and
set a post as per instructions for
the corner to fractional sections
29th & 32nd. from which the post
on this line between sections
31st & 32nd. Bears south $46^{\circ} 34'$
West. 78.31 chains distant.

Land gently rolling and
granite boulders.

Soil good

Scattering Pine and Juniper.

Township 14 North, Range 2 West
 Gila and Salt River Meridian

As West, on a random line between sections
 30 and 31.

Sac. $13^{\circ}45'$ East

40.00 Set a temporary $\frac{1}{4}$ section corner post.

79.96 Intersect the West boundary 19 links
 South from the corner to sections
 35, 36, 30th & 31., from which corner
 I run.

South, $89^{\circ}52'$ East, on true line between
 sections 30. th & 31.

Sac $13^{\circ}45'$ East

39.96 Set a $\frac{1}{4}$ section corner stone 16×8
 $\times 6$ inches, as per instructions.

No trees near.

79.96 th The corner to sections 29, 30, 31th & 32.

Land, rolling and stony.

Soil good.

Scattering Poac., Juniper and Oak.

Township 14 North, Range 2 West
Gila and Salt River Meridian

Chs.	North, between sections 29 th and 30.
	Sec. 13° 45' East
9.00	Ravine runs north east.
11.00	Large granite boulders 50 feet high.
28.00	Some granite boulders.
40.00	Set a 1/4 section corner post as per instructions, from which an Oak 6 in. diam. bears north 4° east, 26 links distant. do. 6 " " " south 13 " "
42.00	Enter cultivated land, bears east and west.
66.50	Leave same and rocky ground east and west.
75.00	Leave rocks, bears east and west.
79.00	Road bears west and south east.
80.00	Set a stone 18x8x8 inches as per instructions for the corner to section 19.20.29 th and 30. - from which a Pine, 24 in. diam. bears north 81° East, 64 links dist. an Oak 10 " " " south 54° East 100 " " no other trees near. a House bears south east, 50 links distant. Land rolling and level, Soil 2 ^o rate. Pine and Oak timber.

Township 14th North. Range 2 West
Gila and Salt River Meridian

Chs East. on random line between sections 20th & 29.

Sac. 13° 45' East

8.00 Road bears north and south east.

10.00 Enter rocky lands.

40.00 Set a temporary ¹/₄ section corner Post.

80.06 Intersect the north and south line 16 links
north of the corner to sections 20. 21.

28^{and} 29. from which corner I run.

North. 89° 53' West. on true line between

sections 20th & 29.

Sac. 13° 45' East

40.03 Set a ¹/₄ section corner Post in a
stone mound as per instructions.

No trees near.

80.06 The corner to sections 19. 20. 29 & 30

Land rolling and stony.

Soil 3rd rate.

Scattering timber.

44

Township 14 North Range 2 West
Gila and Salt River Meridian

Chs	West, on random line between sections 19 th & 30.
	Var. 13° 45' East.
3.50	Road north west and south east.
29.00	Same road south west and north east.
40.00	Set a temporary 1/4 section corner post.
43.00	Road bears north west ⁴⁰⁰ south east.
61.00	Road runs north.
69.00	Round knoll 50 feet high.
79.80	Intersect the west boundary line at the corner to sections 19, 30, 24 th & 25. from which corner I run. —
	East, on true line between sections 19 th & 30.
	Var. 13° 45' East
39.80	Set a 1/4 section corner post as per instruc- tion. from which, —
	A Pin 16. in. diam, bears south 57° East, 56 links dist.
	do 16. " " " north 44° east, 71 " "
79.80	The corner to sections 19, 20, 29 th & 30. Land rolling, Soil good. Timber Pine Juniper and Oak.

Township 14 North, Range 2 West
Gila and Salt River Meridian

North, between sections 19th and 20.

Var. $13^{\circ} 45'$ East

40.00 Set a $\frac{1}{4}$ section corner stone $16 \times 10 \times 4$ inches, as per instructions, from which a Pine 14 inches diameter bears west 58 links distant.

An Oak 6 inches diameter bears north 43° East, 31 links distant.

75.00 Road north west and south east

80.00 Set a stone $20 \times 16 \times 12$ inches in a stone mound as per instructions for the corner to sections 17, 18, 19th and 20, from which

a Pine 24 in. diam. bears north 70° East, 100 links dist.

An Oak 8. " " north 82° west, 19 " "

No other trees near.

Land rolling and stony.

Soil 2nd rate.

Timber. Pine, Juniper and Oak.

Township 14 North. Range 2 West
Gila and Salt River Meridian

- No. East. on random line between sections 17th and 20.
- Var. $13^{\circ} 45'$ East
- 8.00 Begin ascent of hill, bears northth and southth
- 19.75 Top of same, bears north and south, 75 feet high.
- 31.50 Bottom of hill bears northth and southth.
- 40.00 Set a temporary $\frac{1}{4}$ section corner post.
- 63.00 Ravine runs north east.
- 79.88 Intersect the corner to sections
16, 17, 20th and 21. from which corner, run
West, on true line between sections 17th and 20.
Var. $13^{\circ} 45'$ East
- 39.94 Set a $\frac{1}{4}$ section corner stone 16 x 10 x 6
inches as per instructions. No trees near.
- 79.88 The corner to sections 17, 18, 19th and 20.

Land broken and rolling.
Soil good for grass.
Some scattering Pine and Oak.

Aug. 22
July 26th 1871

Township 14 North. Range 2 West

Gila and Salt River Meridian

Chs West. on a random line between sections 18th and 19.

Sac. $13^{\circ}45'$ East

- 9.50 Road bears north and south.
- 12.25 Fence bears north and south and into cornfield.
- 40.00 Set a temporary $\frac{1}{4}$ section corner post.
- 44.00 Willow Creek 30 links wide runs north.
- 61.00 Leave cornfield bears southwest and north east.
- 79.82 Intersect the west boundary line 14 links north of the corner to sections 18, 19, 13th and 24. from which corner I run.
- North $89^{\circ}54'$ East, on true line between sections 18th and 19.

Sac. $13^{\circ}45'$ East.

- 39.82 Set a $\frac{1}{4}$ section corner post in a mound and pits as per instructions.
- A Pine 8 in. diam. bears south, 32 links distant.

- 79.82 No other tree near.
The corner to sections 17, 18, 19 and 20.
Land level. Soil 1st rate
Pine, Juniper and Oak timber.

Township 14 North, Range 2 West.

Gila and Salt River Meridian

- No North, between sections 17^{and} 18.
 Fav. 13° 45' East
- 15.00 Willow creek 40 links wide, runs north east.
- 21.90 Brush fence runs east and west.
 And a house 10 chains West of line.
- 40.00 Set a '41 section corner stone 20x10x10
 inches as per instructions.
 An Oak 10 in. diam. bears north 10° east, 25 links dist.
 A Pine 6 " " " north 7° west 26 " "
- 41.70 Road bears north east ^{and} south west.
- 48.00 Ravine runs south east.
- 65.00 Enter cornfield, bears east ^{and} west and leave timber.
- 71.00 Leave cornfield.
- 80.00 Set a stone 16x14x10 inches as
 per instructions for the corner to
 sections 7, 8, 17^{and} 18.

No trees near.
 Land rolling. Soil 1st ^{and} 2^d Prater
 Pine and Oak timber on first
 half mile.

Township 14 North, Range 2 West

Gila and Salt River Meridian

Ch^o East, on a random line between sections
8th and 17.

Var. $13^{\circ}45'$ East

- 15.00 Road bears north and south.
25.00 Begin steep ascent of hill.
40.00 Set a temporary $\frac{1}{4}$ section corner post
and descend.
70.00 Foot of hill and enter rock flat.
80.20 Intersect the north and south line
9 links north of the corner, to sections
8, 9, 16th and 17, from which corner I run,
North $89^{\circ}56'$ West, on true line between
sections 8th and 17.

Var. $13^{\circ}45'$ East

- 40.10 Set a $\frac{1}{4}$ section corner stone $14 \times 10 \times 8$
inches in stone mound as per
instructions. No trees near.
80.20 The corner to sections 7, 8, 17th and 18.
Land broken. Soil good
No timber.

Township 14 North, Range 2 West

Gila and Salt River Meridian

Co. West. on a random line between sections
7 and 18.

Sac. $13^{\circ} 45'$ East

40.00 Set a temporary $\frac{1}{4}$ section corner post.

79.70 Intersect the west boundary line
17 links south of the corner to sections
7, 18, 12 and 13, from which corner, I run.

South $89^{\circ} 53'$ East - on true line between
sections 7 and 18

Sac $13^{\circ} 45'$ East.

39.70 Set a stone $18 \times 8 \times 4$ inches in a
stone mound as per instructions
No trees near.

79.70 The corner to sections 7, 8, 17 and 18.

Land south slope of hill.
Soil 2^d rate. No timber.

Township 14 North, Range 2 West
Gila and Salt River Meridian

Chs. North, between sections 7^{and} 8.

Sac. $13^{\circ}45'$ East

40.00 Set a $\frac{1}{4}$ section corner stone $16 \times 10 \times 10$
inches as per instructions

No trees near.

80.00 Set a stone $30 \times 12 \times 10$ inches in
a stone mound as per instructions
for the corner to sections
5, 6, 7 and 8.

No trees near.

Land rolling.

Soil 2^o rate.

No timber.

Township 14 North, Range 2 West
Gila and Salt River Meridian

- Chs. East on a random line between sections 5th and 8.
Var. $13^{\circ}45'$ East.
- 10.00 Range runs north
- 38.50 Road runs north and south
- 40.00 Set a temporary $\frac{1}{4}$ section corner post
on top of hill, 100 feet high, bears north $\frac{1}{2}$ south.
- 74.00 Range runs north.
- 80.00 Intersect the north $\frac{1}{2}$ south line at
the corner to sections 4, 5, 8, and 9,
from which corner, I run —
West, on true line between sections 5th and 8.
Var. $13^{\circ}45'$ East
- 40.00 Set a $\frac{1}{4}$ section corner stone $14 \times 10 \times 6$
inches as per instructions.
No trees near.
- 80.00 The corner to sections 5, 6, 7th and 8.
- Land rolling. Soil 2nd rate
No timber.

Township 14 North, Range 2 West
Gila and Salt River Meridian

(* see next page)
40 North, on a random line between sections
5 and 6.

Var. $13^{\circ}45'$ East.

40.00 Set a temporary $\frac{1}{4}$ section corner post.

80.18 Intersect the north boundary line
 $\frac{1}{4}$ link east of the corner to sections
5, 6, 31 and 32, from which corner I run
South $0^{\circ}6'$ East, on true line between
sections 5 and 6.

Var $13^{\circ}45'$ East.

40.18 Set a $\frac{1}{4}$ section corner post on a
mound and pits as per instructions
No trees near.

80.18 The corner to sections 5, 6, 7 and 8

Sand gently rolling.
Soil 1st and 2nd rate.

No timber

Townships 114 North, Range 2 West

Gila ^{and} Salt River Meridian

No. 1 West, on a random line between sections
6 ^{and} 7.

Sec. $13^{\circ} 45'$ East.

33.00 Begin to ascend.

40.00 Set a temporary $1/4$ section corner post.

79.66 Intersect the west boundary line
11 links south of the corner to
sections 6, 7, 1 ^{and} 12, from which
corner I ran.

South $89^{\circ} 55'$ East, on true line between
sections 6 ^{and} 7.

Sec. $13^{\circ} 45'$ East

39.66 Set a $1/4$ section corner stone $16 \times 11 \times 6$
inches as per instructions.

No trees near.

79.66 The corner to sections 5, 6, 7 ^{and} 8.

Sand steep east slope and stony.
Soil 3" rap. No timber.

Aug. 23 July 27th 1871

General Description

This Township has some good agricultural lands and all of it is good grazing land.

There is some good timber in the south west corner, and part of the town of Prescott is in section No 33 of this township.

Granite Creek runs through the midst of this township and usually affords a living stream of good water.

S. W. Foreman.

Deputy Surveyor.

Surveyor General's Office
Washington D.C.

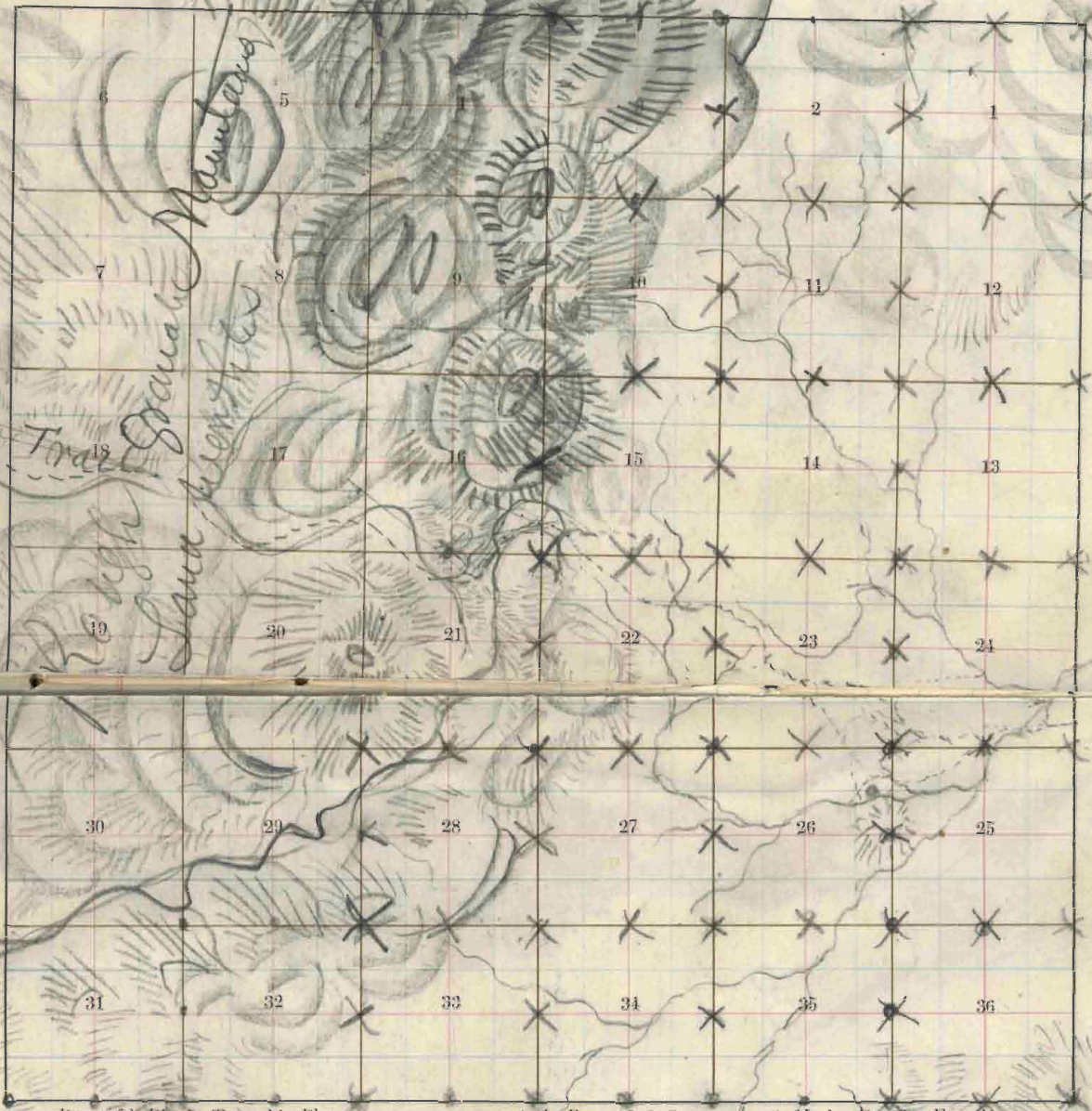
October 20th 1871

The foregoing field notes of the
Survey of the Subdivision
lines of Township 14 N. Range
20. of the Gila & Salt River
Base and Meridian line in
the Territory of Arizona, exe-
cuted by S. W. Foreman Cf.
Deputy Surveyor, under his con-
tract dated May 29th 1871, hav-
ing been critically examined
the necessary corrections and
explanations made the said
field notes and the Survey
they describe are hereby
approved

John Masson
Cf. Surveyor General
for Arizona

BOOK 1038

TOWNSHIP 14 N. RANGE 3 West. MERIDIAN



Bancroft's Blank, Township Plot.

A. L. Bancroft & Company, 721 Market St., San Francisco.

Meridian Line,

Base Line,

Standard Line,

Township Lines,

Section Line,

Meander Lines,

Office Work,

Ranch Lines Re-surveyed,

BOOK 1038

Wells Cr.

13-56-9



Field Notes

of

The Subdivision Series ofTownship 14 North, Range 3 WestGila & Salt River MeridiansArizona TerritoryBy S. W. Foreman

Deputy Surveyor

Under his contract of

Survey commenced

Survey completed.

57A

BOOK 1038

4-674.

Township **14N.** R. **3W.** Sec. **1, 2, 3, 4, 5, 6, 7, 8, 9, 10, 11, 12, 13, 14, 15, 16, 17, 18, 19, 20, 21, 22, 23, 24, 25, 26, 27, 28, 29, 30, 31, 32, 33, 34, 35, 36.**

6	5	4	3	79	2	68	1
			x 88		78		67
7	8	9	10	77	11	66	12
			x 87		76		65
18	17	16	x 86	15	75	14	64
			x 93	85		74	63
19	20	21	84	22	73	23	62
			92		83		72
30	29	91	28	82	27	71	26
			90		81		70
31	32	89	33	80	34	69	35
						58	36

Township 14 North, Range 3. West
Gila and Salt River Meridian

Shs Begin on the South Boundary
at the corner to sections 1, 2, 35th & 36th
and run—

North, between sections 35th & 36th.

Sec. 13° 56' East

(as per east boundary)

40.00 Set a 1/4 section corner stone
16 x 10 x 4 inches as per instructions
A Pine 6 in. diam. bears North 17° east, 108 links dist
do 8. " " south 26° west 78 " "

80.00 Set a stone 18 x 14 x 10 inches as per
instructions for the corner to sections
25, 26, 35 & 36.
an Oak. 4 in. diam. bears north 41° west, 44 links dist.

A Pine 10 " " " north 30° west 150 " "

No other trees near.

Land rolling hills. Soil good
Pine, Oak and Juniper timber.

Township 14 North, Range 3 West.
Gila and Salt River Meridian

Chs East, on a random line between sections
25th & 36.

Var. $13^{\circ} 56'$ East.

- 9.00 Begin ascent of hill, bears North & south.
35.50 Top of hill 200 feet high.
40.00 Set a temporary $\frac{1}{4}$ section corner Post.
37.00 Bottom of descent of hill.
80.00 Intersect the east boundary line
at the corner to sections 25, 36, 30 & 31.
from which corner I run.

West, between sections 25th & 36.

Var. $13^{\circ} 56'$ East.

- 40.00 Set a $\frac{1}{4}$ section corner stone $16 \times 10 \times 8$
inches as per instructions, on bare hill.
No trees near.
80.00 The corner to sections 25, 26, 35 & 36.
Land hilly and rolling.
Soil 2^d rate. No timber

Township 14 North, Range 3 West
Gila and Salt River Meridian

Chs North, between sections 25th and 26.

See 13° 56' East

29.00 Deep ravine runs north east.

40.00 Top of round granite peak 200 feet
high and set a 'H section corner stone
18x14x10 inches as per instructions

No trees near.

61.00 Creek 5 links wide runs north east.

65.00 Ravine runs south east.

74.00 Old saw mill 10 chains east.

80.00 Set a stone 16x14x10 inches as per
instructions for the corner to sections
23, 24, 25th and 26., from which
a Pine, 20 in. diam. bears south 51½ East, 47 links dist.
An Oak 6 " " " north 15° east, 48 " "
An Oak 5 " " " south 11° west, 31 " "

Sand broken. Soil good.

Timber. Pine, Oak and Juniper.

Township 14 North, Range 3 West
Gila and Salt River Meridian

No East, on a random line between sections
24^{and} 25.

Sac 13° 56' East

40.00 Set a temporary 1/4 section corner post.

80.00 Intersub the north and south line
18 links south of the corner to sections
24, 25, 19^{and} 30. from which corner
I run.

South 89° 52' West, on true line
between sections 24^{and} 25.

Sac 13° 56' East.

40.00 Set a 1/4 section corner post in
a mound and pits as per
instructions, from which.

An Oak 6 inches diameter bears
north 27° West, 137 links distant.

No other trees near.

80.00 The corner to sections 23, 24, 25 & 26.
Land rolling. Soil good.
Timber, Pine, Oak^{and} Juniper

Township 14 North, Range 3 West

Gila and Salt River Meridian

Sec North, between sections 23rd & 24.

Sec. 13° 56' East

- 2.50 Road bears east and west.
- 25.00 do " north east and south west.
- 40.00 Set a 1/4 section corner stone 14 x 14 x 14 inches as per instructions.
- A Pine 10 in. diam, bears north 93 links distant
do 20 " " " west 74 " "
- 51.00 Flat ridge runs east and west.
- 67.00 Ravine runs east and leave timber, bears east and west.
- 80.00 Set a stone 16 x 10 x 6 inches in a stone mound as per instructions for the corner to sections 13.14, 23rd & 24.
No trees near.

Land rolling. Soil good.
Timber. Pine Juniper^{and} Oak.

Township 14 North, Range 3 West
Gila ^{and} Salt River Meridian

Chs East. on a random line between sections
13^{and} 24.

Bear 13° 56' East

16.60 Range runs south east.

40.00 Set a temporary 1/4 section corner post.

79.94 Intersect the east boundary line at
the corner to sections 18, 19, 13^{and} 24
from which corner, I run.

West, on true line between sections 13^{and} 24.

Bear 13° 56' East.

39.97 Set a 1/4 section corner stone 16
x 12 x 4 inches as per instructions,

No trees near.

79.94 The corner to sections 13, 14, 23^{and} 24.

Land rolling. Soil good for grass.

No timber. Some brush but burnt off.

Township 14 North, Range 3, West

6th and Salt River Meridian

Sec North, between sections 13th and 14.

Sec. '13° 56' East.

36.40 Ravine runs south east.

40.00 Set a 1/4 section corner stone 16x10
x 6 inches, as per instructions.

No trees near.

80.00 Set a stone 18x10x6 inches as
per instructions for the corner to
sections 11, 12, 13th and 14.

No trees near.

Land rolling.

Soil good for grass.

No timber and burned off.

Township 14 North. Range 3 West.

Gila and Salt River Meridian

No East, on a random line between sections 12nd and 13.

Bear 13° 56' East.

19.00 Ravine runs south

40.00 Set a temporary 1/4 section corner Post.

80.07 Intersect the east boundary line 13 bear's north of the corner to sections 12, 13, 7th and 18, from which corner I run North 89° 54' West, on true line between sections 12th and 13.

Bear 13° 56' East

40.03 Set a 1/4 section corner stone 16x10x4 inches as per instructions No trees near.

80.07 The corner to sections 11, 12, 13th and 14.

Land rolling. Soil good for grass. No timber.

Township 14 North, Range 3 West

Gold and Salt River Meridian

do North. between sections 11^{and} 12.

Sar 13° 56' East

40.00 Set a 1/4 section corner stone
16 x 10 x 10 inches as per instructions
No trees near.

80.00 Set a stone 18 x 10 x 9 inches
in stone mound as per instruc-
tions for the corner to sections
1, 2, 11^{and} 12.

No trees near.

Land steep south west
slope of hill.

Soil 2^d rate.

Aug 24
July 28th 1871-

Township 14 North, Range 3 West

Gila and Salt River Meridian

Chs. East, on a random line between sections 1^{and} 12.

See 13° 56' East.

35.00 ^{ascending} Top of hill, 200 feet high, bears north ^{and} South.

40.00 Set a temporary ¹/₄ section corner post

80.22 Intersect the east boundary line
21 links north of the corner to sections
1, 12, 6^{and} 7, from which corner I run
North 89° 51' West - on true line between
sections 1^{and} 12.

See 13° 56' East

40.11 Set a ¹/₄ section corner stone 16 x 8
x 7 inches as per instructions.

No trees near.

80.22 The corner to sections 1, 2, 11^{and} 12.

Land steep hill sides

Soil good grass land.

No timber and burned off.

Township 14 North, Range 3 West

Gila and Salt River Meridians

In North, on a random line between sections
1 and 2.

Var. $13^{\circ} 5-6'$ East

40.00 Set a temporary $\frac{1}{4}$ section corner post.

80.09 Intersect the north boundary line
7 links west of the corner to sections
1, 2, 35 and 36, from which corner

I run —

South $0^{\circ} 3'$ West, on true line between
sections 1 and 2.

Var. $13^{\circ} 5-6'$ East

40.09 Set a $\frac{1}{4}$ section corner post in
stone mound as per instructions

No trees near.

80.09 The corner to sections 1, 2, 11 and 12.

Sand broken and stony.

Soil poor. No timber.

Sawships 14 North, Range 3 West

Gila and Salt River Meridian

1/4 North, between sections 34^{and} 35.

for 13° 56' East.

40.00 Set a 1/4 section corner stone 20 x 10
x 6 inches in a stone mound as per
instructions. from which —

A Pine 20 in. diam. bears north 10° East, 19 links dist.

do 10 " " " south 81° west. 36 " "

49.80 Prairie runs east.

80.00 Set a stone 14 x 10 x 10 inches as
per instructions for the corner to sections
26, 27, 34^{and} 35. and from which

A Pine, 24 in. diam bears north 31 1/2° west, 40 links dist.

An Oak, 3 " " " south 36 " "

An Oak, 6 " " " south 38° East, 50 " "

No other trees near.

Sand rolling. Soil 2^d rate.

Good pine and Oak timber

No brush.

Township 14 North, Range 3 West
Gila and Salt River Meridian

- Ch East, on a random line between sections 26th & 35th,
Var. $13^{\circ}56'$ East
- 40.00 Set a temporary $\frac{1}{4}$ section corner post
56.80 Creek 5 links wide runs north east.
80.10 Intersect the north and south line
21 links south of the corner to sections
25, 26, 35th & 36, from which corner, I run
South $89^{\circ}51'$ West, on true line between
sections 26th & 35th
Var. $13^{\circ}56'$ East
- 40.05 Set a $\frac{1}{4}$ section corner post in mound
and pits as per instructions, from which -
a Pine, 10 in. diam bears north 17° east, 73 links dist.
an Oak, 5 " " " south 28° west, 122 " "
- 80.10 The corner to sections 26, 27, 34th & 35.

Sand rolling flat hills.

Soil 2^o rate.

Timber, Pine Oakth & Juniper.

Township 14 North. Range 3 West
Gila and Salt River Meridian

Ch^o North. between sections 26th & 27.

Sec. 13° 5-6' East

7.50 Ravine runs east

40.00 Set a ¹/₄ section corner stone 24x10x10 inches as per instructions. from which.

a Pine 24. in. diam. bears north 57° east. 65' lew's dist.

do. 14. " " " south 31° west. 33 " "

41.20 Ravine runs east.

56.00 Ravine runs east.

80.00 Set a stone 18x8x8 inches in a stone mound as per instructions. for the corner to sections 25. 26. 26th & 27. from which a Juniper 10 in. diam. bears north 19° west. 51 lew's dist.

do. 12. " " " south 55° west. 97 " "

No other trees near.

Land - rolling hills.

Soil 2^d rate.

Timber Pine, Juniper ^{and} Oak

Township 14 North Range 3 West

Gila and Salt River Meridian

No East, on a random line between sections 23rd & 26.

Var 13° 56' East

40.00 Set a temporary 1/4 section corner post.

79.86 Intersect the north and south line at
the corner to sections 23, 24, 25th & 26,
from which corner. (true) —

West, on a true line between sections 23rd & 26.

Var. 13° 56' East

39.93 Set a 1/4 section corner post as per
instructions, from which —

a Pine, 10 in. diam. bears north 63° East, 57 links dist.

a Juniper, 6 " " " south 47 1/2° west, 102 " "

79.86 The corner to sections 22, 23, 26th & 27.

Land rolling.

Soil 2nd rate.

Timber Pine, Juniper and Oak.

Township 14 North. Range 3 West.
Gila and Salt River Meridian

Chs North between sections 22nd & 23.

Sec. 13° 56' East

26.50 Leave timber, bears north west ²⁰ east

40.00 Set a ¹/₄ section corner stone 16 x 10 x 8
inches as per instructions.

No trees near.

51.00 Trail runs east and west.

80.00 Set a stone 16 x 10 x 4 inches in
a stone mound as per instructions
for the corner to sections

14, 15, 22, and 23.

No trees near.

Sand rolling, good grass.

Timber on south end of line

Pine and Oak. Soil 2nd rate.

Township 14 North. Range 3 West
Gila and Salt River Meridian

Ch. East. on a random line between sections
14⁴⁰ and 23.

Sar. $13^{\circ} 56'$ East

40.00 Set a temporary $\frac{1}{4}$ section corner east.

80.26 Intersect the north and south line
14 line's north of the corner to sections
13. 14. 23⁴⁰ and 24, from which corner, I run
North $89^{\circ} 54'$ West. on true line between
sections 14⁴⁰ and 23.

Sar. $13^{\circ} 56'$ East

40.13 Set a $\frac{1}{4}$ section corner post in
mound and pits as per instructions
No trees near.

80.26 The corner to sections 14. 15. 22⁴⁰ and 23.

Sand rolling.

Soil 2^o rate.

Good grazing land. No timber.

Aug. 25

July 29th 1871—

Township 14 North, Range 3 West
 Gila and Salt River Meridian

Sec. North, between sections 14^{and} 15
 Var. 13° 36' East

20 40.00 Set a 14 section corner stone
 40 16x10x6 inches as per instructions
 No trees near.

5 80.00 Set a stone 18x10x10 inches
 8 in stone mound as per instructions
 for the corner to sections
 10, 11, 14^{and} 15.

No trees near.

Some rough and stony.
 Soil 3rd rate and some grass
 No timber.

Township 14 North. Range 3 West
 Gila and Salt River Meridian

Chs East, on a random line between sections
 11^{and} 14.

Sec. 13° 56' East

32.50 Deep ravine runs south.

40.00 Set a temporary 1/4 section corner post.

80.20 Intersect the north and south line at
 the corner to sections 11, 12, 13^{and} 14.
 from which corner, I ran. —

West, on true line between sections 11^{and} 14.

Sec. 13° 56' East

40.10 Set a 1/4 section corner stone 16x10
 x 4 inches as per instructions.

No trees near.

80.20 The corner to sections 10, 11, 14^{and} 15.

Land broken and stony,
 Soil 3rd rate and good grass.

No timber.

Township 14 North, Range 3 West

Gila and Salt River Meridian

Co North, between sections 10^{and} 11.

Var. 13° 56' East

21.00 Deep gulch runs east.

40.00 Set a 44 section corner stone 16x8
x 4 inches as per instructions.

No trees near.

57.50 Deep ravine runs east.

80.00 Set a stone 18x10x8 inches
as per instructions for the
corner to sections 2, 3, 10^{and} 11.

No trees near.

Said broken and stony.
Soil 3rd rate.

No timber.

Township 14 North Range 3, West
Gila and Salt River Meridian

East, on a random line between sections
2nd 11.

Var $13^{\circ} 56'$ East

31.70 Deep ravine runs south.

40.00 Set a temporary $\frac{1}{4}$ section corner post.

63.50 Ravine runs south.

80.10 Intersect the north and south line
18 links south of the corner to
sections 1, 2, 11th 12, from which
corner I run, -

South $89^{\circ} 52'$ West, on true line
between sections 2nd 11.

Var $13^{\circ} 56'$ East.

40.05 Set a $\frac{1}{4}$ section corner post on a
stone mound as per instructions

No trees near.

80.10 The corner to sections 2, 3, 10th 11.

Land broken and stony.

Soil 3rd rate. No timber.

Township 14 North, Range 3 West
Gila and Salt River Meridian

- | | |
|-------|---|
| Chs. | North on a railroad line between sections 2 nd & 3. |
| | Var $13^{\circ}56'$ East |
| 15.00 | Steep south east slope |
| 40.00 | Set a temporary $\frac{1}{4}$ section corner post. |
| 80.21 | Intersect the north boundary at the corner to sections 2, 3, 34 & 35, from which corner, I run -
South, on true line between sections 2 nd & 3. |
| | Var $13^{\circ}56'$ East. |
| 40.21 | Set a $\frac{1}{4}$ section corner stone 16 x 10 x 4 inches as per instructions
No trees near. |
| 80.21 | The corner to sections 2, 3, 10 & 11.
Sand broken and stony.
Soil poor. No timber. |

Township 14 North. Range 3 West

Gila and Salt River Meridians

Chs North. between sections 33rd 34.

Sec. 13° 56' Each

40.00 Set a ¹/₄ section corner stone
14 x 10 x 8 inches, as per instructions
from which.

An Oak. 6 in. diam. bears south 3° west. 31 links distant
do 8 " " " south 10° east. 24 " "

47.50 Ravine runs east.

80.00 Set a stone 18 x 10 x 10 inches as per
instructions for the corner to sections
27, 28, 33rd 34.

No trees near.

Land rolling. Soil 2nd rate
Some Pine and Juniper timber.

Township 14 North. Range 3 West

Gila and Salt River Meridian

On the East, on a random line between sections
27⁴⁰ and 34.

Var. $13^{\circ}56'$ East

40.00 Set a temporary $\frac{1}{4}$ section corner post.

80.09 Intersect the north and south line
17 links north of the corner to
sections 26, 27, 34⁴⁰ and 35.

from which corner run. —

North $89^{\circ}53'$ West.

on true line between sections 27⁴⁰ and 34.

Var $13^{\circ}56'$ East

40.04 Set a $\frac{1}{4}$ section corner stone $16 \times 8 \times 4$
inches as per instructions, from which
a Pine 10 inches diameter bears North $17\frac{1}{2}^{\circ}$ East, 127 links, dist.

No other tree near.

80.09 The corner to sections 27, 28, 33⁴⁰ and 34
Sand rolling. Soil 2^d rate
Timber Pine and Juniper.

Aug. 26
July 31st 1871. —

Township 14 North. Range 3 West
Gila and Salt River Meridian

40 North. between sections 27th and 28.

var 13° 56' East

40.00 Set a 1/4 section corner post in
mound and pits as per instructions

No trees near.

43.00 Begin steep ascent of bare hill
beats south west and north east.

80.00 Summit of mountain about 800
feet above Prescott and set a
stone 18 x 10 x 6 inches as per
instructions for the corner to
sections 21, 22, 27th and 28.

No trees near.

Land. Steep south east slope
of mountain.

Soil 2nd rate.

Scattering Pine and Oak.

Township 14 North. Range 3, West

Gila and Salt River Meridian

No East. on a random line between sections 22 and 27.

Var. 13° 56' East

17.00 Begin steep descent.

40.00 Set a temporary 1/4 section corner post.

54.50 Deep ravine runs south and ascend.

80.32 Intersect the north and south line 27 links north of the corner to sections 22, 23, 26, and 27, from which corner draw North 89° 48' West.

on true line between sections 22 and 27.

Var 13° 56' East

40.16 Set a 1/4 section corner stone 16x10x4 inches as per instructions.

No trees near.

80.32 At the corner to sections 21, 22, 27 and 28.

Land broken and rough.

Said 3^d rate

Scattering Pine and Oak.

Township 14 North. Range 3. West
Gila and Salt River Meridian

Sec North, between sections 21^{and} 22.

Sec. 13° 56' East.

40.00 Set a 1/4 section corner stone 18x10x6
inches in a stone mound as per
instructions. No trees near.

80.00 Set a stone 18x10x10 inches as
per instructions for the corner to
sections 15, 16, 21^{and} 22.

No trees near.

Land covered with immensely
large granite boulders.

Soil poor.

A few scattering Pine and Oak.

Township 14 North, Range 3 West
 6thth Salt River Meridian

Chs East, on a random line between sections
 15th and 22.

Var. $13^{\circ}56'$ East

- 10.00 Ravine and timber runs north.
 19.00 Summit of mountain bears north^{ly} south.
 40.00 Set a temporary $\frac{1}{4}$ section corner post.
 52.00 Trail bears northwest and south east.
 58.50 Ravine runs south.
 80.00 Intersect the north and south line
 at the corner to sections 14, 15, 22, ^{and 23}
 from which corner, I run —
 West, on true line between sections
 15th and 22.

Var. $13^{\circ}56'$ East

- 40.00 Set a $\frac{1}{4}$ section corner post in ground
 and pits as per instructions, from which —
 A Pine, 12 in. diam., bears south 64° East, 33 links dist.
 do 20 " " " north 63° west, 97 " "
 80.00 The corner to sections 15, 16, 21th and 22.
 Sand, broken. Soil 5th rate. Pineth and Oak timber.

Township 14 North. Range 3 West

Gila and Salt River Meridian

Chs North. between sections 15 and 16.

Var. 13° 56' East

14.50 Trail runs east and west.

31.00 Ravine runs west.

40.00 Set a 1/4 section corner stone 16x8x6
inches as per instructions.

and on account of high rocky
peaks of granite rock. I can
run no farther on this line.

Township 14 North, Range 3 West
Gila and Salt River Meridian

Ch From the corner to sections 10, 11,
14^{and} 15, I ran —
West, on true line between sections
10^{and} 15.

Sac. $13^{\circ}56'$ East

40.00 Set a 1/4 section corner stone
16 x 10 x 4 inches as per instructions

No trees near.

Had on account of high
rocky granite peaks, I can run
no farther on this line.

Township 14 North. Range 3. West

Gold and Salt River Meridian

Chs From the corner to section 2. 3.
10th 11. Same.

West. on true line between sections
3 and 10.

Var. $13^{\circ}56'$ East

40.00 Set a '4 section corner stone
16 x 12 x 4 inches as per instructions

No trees near.

And on account of high granite
peaks, I can run no farther
on this line.

Aug 28
August 28th 1871

Township 14 North, Range 3, West

Gila Salt River Meridian

Chs North between sections 32^{and} 33,
 Sec. 18' 56' East

40.00 Set a $\frac{1}{4}$ section corner post in a
 mound of stone as per instructions

No trees near.

45.00 Summit of mountain bears north
 east and south west.

80.00 Set a stone $18 \times 10 \times 8$ inches as
 per instructions for the corner
 to sections 28, 29, 32^{and} 33.

No trees near.

Land steep and mountainous.
 Soil poor and no timber
 north of $\frac{1}{4}$ section corner.

Township 14 North. Range 3 West
Gila and Salt River Meridian

Sec East, on random line between sections
28nd 33.

Sec 13°56' East

40.00 Set a temporary 1/4 section corner east.

80.08 Intersect the north and south line
13 links south from the corner
to sections 27, 28, 33nd 34, from
which corner, I run —
South, 89°54' West.

on true line between sections 28nd 33.

Sec 13°56' East

40.04 Set a 1/4 section corner stone
16 x 8 x 6 inches as per instructions
from which. —

an Oak, 6 inches diameter bears north 76°
west, 128 links distant.

No other tree near

80.08 The corner to sections 28, 29, 32nd 33.
Sand broken, Soil poor
Some scattering Pine and Oak.

Township 14 North, Range 3 West

Gila and Salt River Meridians

No North, between sections 28th and 29,
 Sac. 13° 56' East

40.00 Set a 1/4 section corner stone
 16 x 10 x 4 inches as per instructions

No trees near

61.00 Deep rock cañon runs south west.

80.00 Set a stone 18 x 10 x 8 inches in
 a stone mound as per instructions
 for the corner to sections
 20, 21, 28th and 29.

No trees near.

Land covered with large
 granite boulders.

Soil poor. No timber.

Townships 14 North, Range 3 West
Gila and Salt River Meridian

Chs East. on a random line between
sections 21nd and 28.

Bear 13° 56' East

34.50 Cañon runs south west.

40.00 Set a temporary 1/4 section corner east.

80.19 Intersect the north and south line
26 links north of the corner to sections
21, 22, 27th and 28. from which, true
North 89° 49' West.

on true line between sections 21st and 28.

Bear 13° 56' East

40.09 Set a 1/4 section corner stone
16 x 10 x 5 inches as per instructions

No trees near.

80.19 The corner to sections 20, 21, 28th and 29.

Sand broken and rocky
Soil poor. No timber.
Oak brush.

Township 14 North. Range 3 West

Gila and Salt River Meridian

From the corner to sections
15, 16, 21^{1/2}, 22, I run —
West.

on true line between sections 16^{1/2} and 21.

Var. $13^{\circ} 56'$ East

17.50 Trail runs north east and south west.

21.40 Racine runs south west.

40.00 Set a 1/4 section corner stone

18 x 10 x 6. inches as per instructions

No trees near.

And here the line becomes im-
practicable on account of high
granite peaks, and the lands are
worthless in all those portions
of this township that are not
surveyed.

Along the East line and
in the south east corner
of the Township the soil
and timber was good, but all

Remarks (continued).

those portions that are west of the summit of the mountains and are not subdivided, the land is utterly worthless, rocky, steep and cut up by deep cañons and cannot be surveyed.

S. W. Foreman
Deputy Surveyor.

August 29, 1871—

List of Names.

A List of the Names of the individuals employed to assist in running, measuring, or marking the lines and corners described in the foregoing Field Notes of *The* Sub-Division lines of Tps. 14 North of Range 2 and 3 West of the Gila & Salt River Base & meridian lines showing the respective capacities in which they acted.

- | | |
|---------------|-------------|
| Joseph Gruel | Compassman. |
| J. L. Harris. | Chainman. |
| Geo. W. Liarr | Axeman. |
| James Dale | Flagman |



Final Oaths of Assistants.

We hereby certify that we assisted Solomon W
 Foreman Deputy Surveyor, in surveying
 The Sub-Division lines
 in Townships. 14 N.
 Ranges 2 & 3 West of
 Tila & Salt River Bas
 & meridian lines

and that said Survey has been in all respects, to the
 best of our knowledge and belief, well and faithfully sur-
 veyed, and the boundary monuments planted according to
 the instructions furnished by the Surveyor-General.

Joseph Freund.

J. D. Keams

George W. Carr

James Daly

Subscribed & Sworn to
 before me this ²⁹~~28~~ day
 of August 1871.

Ed. W. Wells Clerk Dist
 Court 3^d Dist Arizona

Final Oath of Deputy Surveyor.

I, Solomon W. Forman
Deputy Surveyor, do solemnly swear that, in pursuance
with a contract with John Wasson
United States Surveyor-General for Arizona, bearing date
the day of , I have well, faithfully
and truly, in my own proper person, and in strict con-
formity with the instructions furnished by the Surveyor-
General, the Surveying Manual, and the laws of the
United States, surveyed all those parts or portions of the
Subdivision lines of
Townships 14 North
of Ranges 2 and 3 West
of the Gila & Salt River
Meridian line



as are represented in the foregoing Field Notes as having

been surveyed under my directions; and I do further solemnly swear that all the corners of said surveys have been established and perpetuated in strict accordance with the Surveying Manual and printed instructions, and that the foregoing are the true and original Field Notes of such Survey.

Solomon W. Foreman
U. S. Deputy Surveyor.

Subscribed and sworn to before me, this ~~28~~ 29
day of August 1871
E. W. Wells
Clerk Dist Court
3^d Dist Arizona.



Surveyor General's Office
Tucson Ariz.

October 20th 1871.

The foregoing field notes
of the Survey of the Sub-
division lines of Townships
14 N. Range 3. West
Gila and Salt River Base
and Meridian line in the
Territory of Arizona execut-
ed by S. W. Foreman of-
ficial Deputy Surveyor under his
contract dated May 29th 1871
having been critically ex-
amined, the necessary
corrections and explana-
tions made, the said field
notes and the surveys they
describe are hereby approved.

John H. Moore
of. Surveyor General
for Arizona