

1040

No. 1040

BOOK 1040

Field Notes

of the survey of the Subdivision  
lines of Township 15 N. Range  
1 West, of the Gila and Salt  
River Meridians, Arizona.

By S. W. Foreman Dep. Surveyor  
under his contract of October 14, 71

Survey commenced Dec 18, 1871

Survey completed Dec. 23, 1871

Manuscript sent to Commissioner

March 20, 1872.

No. 1040

*Preliminary Oaths of Assistants.*

~~I, \_\_\_\_\_ do solemnly swear that I will well and truly perform the duties of Compassman, according to instructions given me, and to the best of my skill and ability.~~

~~Subscribed and sworn to before me, this \_\_\_\_\_ day of  
187~~

~~U. S. Deputy Surveyor.~~

—♦♦—

We, *George Ellwood* and  
*Joseph Hume*  
do solemnly swear that we will faithfully execute the duties of Chain Carriers; that we will level the chain upon uneven

ground, and plumb the tally pins, whether by sticking or dropping the same; that we will report the true distance to all notable objects, and the true length of all lines, that we will assist in measuring, to the best of our skill and ability.

Joseph Hume  
 George Ellwood  
 Fred. Smith

Subscribed and sworn to before me, this 9<sup>th</sup> day of  
 December 1871

U. S. Deputy Surveyor

E. W. Wells  
 Clerk Dist Court  
 3<sup>d</sup> dist atc

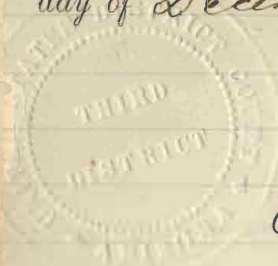
We Fred Snider & James Baker  
 do solemnly swear that <sup>we</sup> I will well and truly perform the  
 duties of Surveyor & Flagman <sup>us</sup> respectively  
 according to instructions given ~~me~~, and to the best of ~~my~~  
 skill and ability.

Fred Snider  
 James Baker

Subscribed and sworn the be before me, this 9<sup>th</sup>  
 day of December 1871

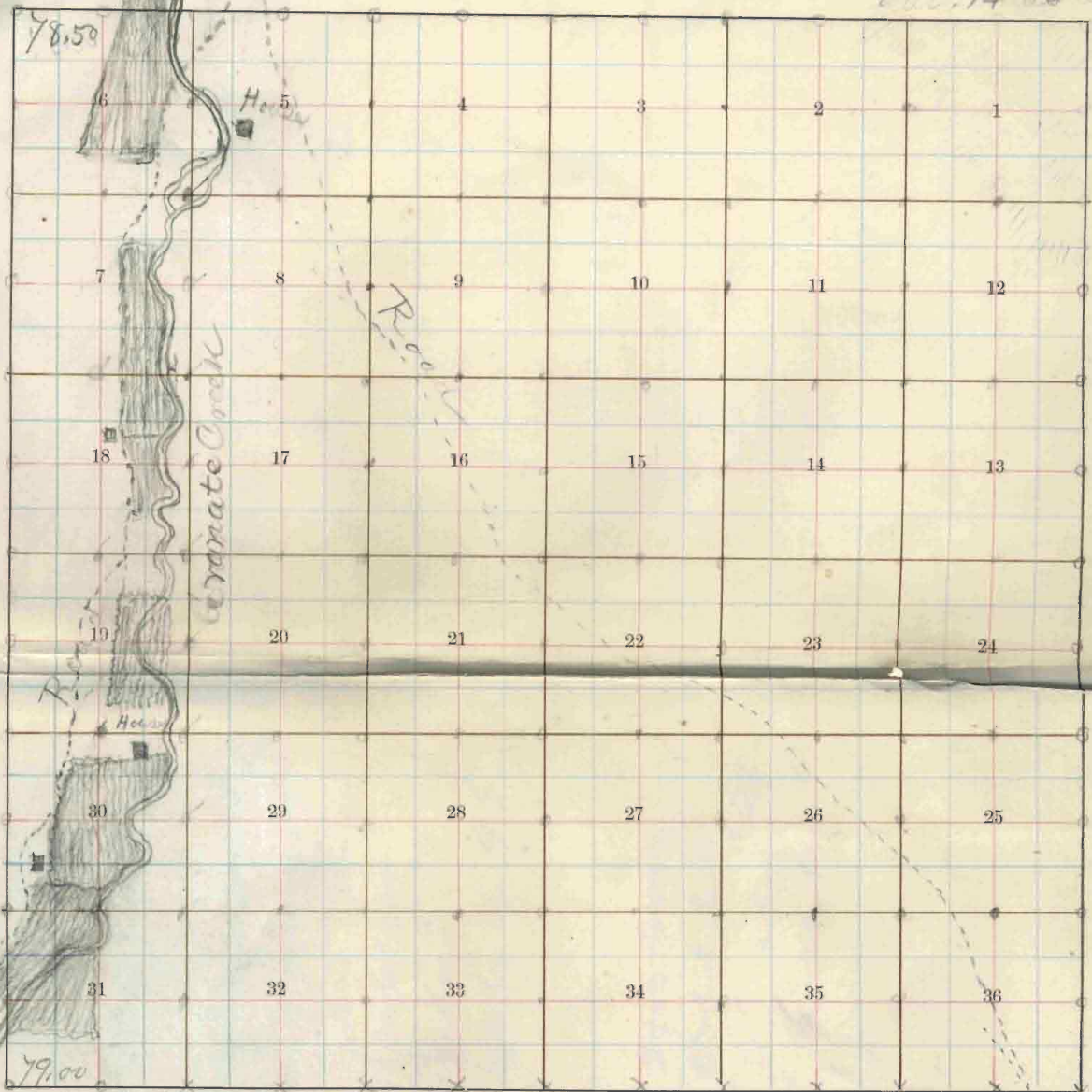
U. S. Deputy Surveyor.

Cowwells  
 Clerk Dist Court  
 3<sup>d</sup> Dist at



TOWNSHIP 15 N. RANGE 1 West MERIDIAN

BOOK 1040



Bancroft's Blank, Township Plot.

A. L. Bancroft & Company, 721 Market St., San Francisco.

Meridian Line,

Base Line,

Standard Line,

Township Lines,

Section Line,

Meander Lines,

Office Work,

Ranch Lines Re-surveyed,

BOOK 1040

do do ac sk de

1C

# Index

BOOK 1040

4-674.

Township 15 N, R. 1 W, S. 8 S, R. B. 2 M

6	58	5	42	4	31	3	20	2	11	1
57		56		41		30		19		10
7	55	8	40	9	29	10	18	11	9	12
54		53		39		28		17		8
18	52	17	38	16	27	15	17	14	7	13
51		50		37		26		16		6
19	49	20	36	21	25	22	15	23	5	24
48		47		35		24		14		4
30	46	29	34	28	23	27	13	26	3	25
45		44		33		22		12		2
31	43	32	32	33	21	34	12	35	1	36

No. 1040

Field Notes  
of the survey of the  
Subdivision Lines of  
Township 15 North, Range 1 West,  
Gila and Salt River Meridian  
Arizona Territory

Township 15 North Range 1 West  
 Sec 3 Salt River Meridian

Begin on the south boundary line  
 at the corner to sections 35  $\frac{3}{4}$  36  
 and run thence  
North.

between sections 35  $\frac{3}{4}$  36

Var. 13' 56" East

(as per each boundary line)

40.00 Set a post in a mound with pits  
 as per instructions for 1<sup>st</sup> section  
 corner. No trees near

50.00 Set a post in a mound with pits  
 as per instructions for the corner  
 to sections

35, 26, 35  $\frac{3}{4}$  36

No trees near

Land gently rolling.

Good - 1<sup>st</sup> rate.

No timber.



Township 15 North Range 1 West  
 6th & Salt River Meridian

East.

run random line between sections 25<sup>th</sup> & 36<sup>th</sup>  
 var. 13° 56' East.

2.50 Road bears N. W. and S. E.  
 40.00 Set a temporary  $\frac{1}{4}$  section corner post.  
 40.05 Intersect the east boundary line  
 at the corner to sections 25, 36  
 30<sup>th</sup> & 31, from which corner Run -  
West.

run true line between sections 25<sup>th</sup> & 36<sup>th</sup>  
 var. 13° 56' East.

40.02 Set a  $\frac{1}{4}$  section corner post in  
 a mound and pits as per  
 instructions.

No trees near  
 40.05 the corner to sections  
 25, 26, 35<sup>th</sup> & 36.

Land rolling.  
 Soil - 1<sup>st</sup> rate.

No timber.

Township 15 North Range 1 West  
 Tada & Salt River Meridian

Sec North

between sections 25<sup>th</sup> & 26<sup>th</sup>  
 var. 13° 56' East.

- 27.00 Road bears S. E.  $\frac{3}{4}$  N. W.
- 40.00 Set a 4<sup>th</sup> section corner post in a mound and pits as per instructions  
 No trees near.
- 80.00 Set a post in a mound and pits as per instructions for the corner to sections  
 23. 24. 25<sup>th</sup> & 26<sup>th</sup>  
 No trees near.
- Land rolling.  
 Soil - 2<sup>d</sup> rate.  
 No timber.

Township 15 North, Range 1 West  
 6th & Salt River Meridian  
 1st East.

on a random line between sections 24 & 25  
 var.  $13^{\circ} 56'$  East

40.00 Set a temporary  $\frac{1}{4}$  section corner post.  
 80.00 Intersect the east boundary 9 links south  
 from the corner to sections 24, 25  
 19 & 30, from which corner I run  
 $S. 89^{\circ} 56' N.$

on true line between sections 24 & 25  
 var.  $13^{\circ} 56'$  East

40.00 Set a  $\frac{1}{4}$  section corner post in a  
 mound and pits as per instructions  
 No trees near.  
 80.00 Run the corner to sections  
 23, 24, 25 & 26.

Land calling.

Cost 1<sup>st</sup> class 5<sup>th</sup> rate.

No timber.

Township 15 North, Range 1 West  
 6th and Salt River Meridian  
 1st North.

between sections 23<sup>3</sup> & 24  
 var.  $13^{\circ} 56'$  East.

40.00 Set a 1<sup>st</sup> section corner post in  
 a mound and pits as per in-  
 structions.

No trees near.

80.00 Set a post in a mound and  
 pits as per instructions for the  
 corner to sections

13: 14, 23<sup>3</sup> & 24

No trees near.

Land smooth rolling prairie  
 Soil - 1<sup>st</sup> rate.

No timber.

Township 15 North Range 1 West

Sec 3 Salt River Meridian

Sec East

on a random line between sections 13 & 24  
var.  $13^{\circ} 56'$  East

40.00 Set a temporary  $\frac{1}{4}$  section corner post

80.10 Intersect the East boundary at 12  
links North from the corner to  
sections 13, 24, 18 & 19, from which corner  
N.  $89^{\circ} 55'$  W.

on true line between sections 13 & 24

var.  $13^{\circ} 56'$  East

40.05 Set a  $\frac{1}{4}$  section corner post in a  
mound and pits as per instructions

No trees near.

80.10 The corner to sections

13, 14, 23 & 24.

Land - rolling

Soil - 1<sup>st</sup>  $\frac{1}{4}$ , 2<sup>d</sup> rate.

No timber.

Township 15 North, Range 1 West  
 6th and Salt River Meridian  
 Sec 14 North

between sections 13 & 14  
 var. 13.5-6' East

40.00 Set a 44 section corner post in  
 a mound and pits as per in-  
 structions.

No trees near

80.00 Set a post in a mound and  
 pits as per instructions for the  
 corner to sections  
 11. 12. 13<sup>3/4</sup> 14.

No trees near.

Road - rolling.  
 Orib - 1<sup>st</sup> rate  
 No timber

Township 15 North, Range 1 West.  
 6th & Salt River Meridian  
 6th East.

on a random line between sections  
 12 & 13.

var.  $13^{\circ} 56'$  East.

- 40.00 Set a temporary  $\frac{1}{4}$  section corner post.  
 80.00 Intersect the East boundary 7 links  
 south from the corner to sections  
 12, 13, &  $\frac{3}{4}$  18, from which corner run  
S.  $89^{\circ} 54'$  W.

on true line between sections 12 & 13

var.  $13^{\circ} 56'$  East.

- 40.00 Set a  $\frac{1}{4}$  section corner post in a  
 mound and pits as per instructions.  
 No trees near.

- 80.00 The corner to sections  
 11, 12, 13 & 14.

Land-pollary.

Cash - 2<sup>d</sup> rate.

No timber.

Traverse 15 North. Range 1 West.  
 Side of Salt River Meridian  
to North.

between sections 11 & 12

Var.  $13^{\circ} 56'$  East.

40.00 Set a 1/2 section corner post  
 in a mound and pits as per  
 instructions.

No trees near.

80.00 Set a post in a mound and  
 pits as per instructions from  
 the corner to sections

1, 2, 11 & 12.

No trees near.

Land rolling.

Coil - 2<sup>nd</sup> rate.

No timber.



Township 15 North, Range 1 West

Gila Salt River Meridian

East.

on a random line between sections 1<sup>ms</sup> 12  
Var. 13° 56' East

40.00 Set a temporary 1/4 section corner post

80.08 Intersect the East boundary at the  
corner to sections 1, 12, 6, 11.

from which corner I run -  
West.

on true line between sections 1<sup>ms</sup> 12  
Var. 13° 56' East

40.04 Set a 1/4 section corner post in  
a mound and pits as per instruc-  
tion

80.08 The corner to sections  
1, 2, 11<sup>ms</sup> 12.

Land - rolling, and broken on  
east half mile.

Soil - 2<sup>d</sup> rate.

No timber

Township 15 North, Range 1 West.

Gila Salt River Meridian

No North.

an random line between sections 1<sup>st</sup> & 2.

var.  $13^{\circ} 56'$  East.

40.00 Set a Temporary  $\frac{1}{4}$  section corner post.

80.09 Intersect the North boundary at  
the corner to sections 1, 2, 35  
and 36, from which corner True -  
South

an true line between sections 1<sup>st</sup> & 2.

var.  $13^{\circ} 56'$  East.

40.09 Set a  $\frac{1}{4}$  section corner post in a  
mound and pile as per in-  
structions. No trees near.

80.09 The corner to sections  
1, 2, 11<sup>th</sup> & 12.

Land - rolling.

Coil - 3<sup>rd</sup> rate.

No timber.

Dec 18 1871

Township 15 North, Range 1 West  
 Sec 23 Salt River Meridian

to North between sections 34<sup>th</sup> & 35<sup>th</sup>  
 Var. 13° 56' East.

40.00 Set a 1/4 section corner post in a mound and  
 pits as per instructions. No trees near.

80.00 Set a post in a mound and pits as per instructions  
 for the corner to sections 26, 27, 34<sup>th</sup> & 35<sup>th</sup>.

No trees near.

Land level. Soil 1<sup>st</sup> rate. No timber.

East on a random line between sections 26 & 35.

Var. 13° 56' East.

40.00 Set a temporary 1/4 section corner post.

49.94 Intersect the N. & S. Line at the corner  
 to sections 25, 26, 35<sup>th</sup> & 36<sup>th</sup>, from which corner I run

West on true line between sections 26 & 35.

Var. 13° 56' East

39.97 Set a 1/4 section corner post in a mound  
 and pits as per instructions. No trees near.

79.94 The corner to sections 26, 27, 34<sup>th</sup> & 35<sup>th</sup>.

Land gently rolling. Soil 1<sup>st</sup> rate  
 No timber

Township 15 North Range 1 West

Sec. 26 and Salt River Meridian

Sec. 27 North

between sections 26<sup>th</sup> & 27<sup>th</sup>

var. 13° 56' East.

40.00 Set a 4<sup>th</sup> section corner post in a mound and pile as per instructions  
No trees near.

80.00 Set a post in a mound and pile as per instructions for the corner to sections

22. 23. 26<sup>th</sup> & 27<sup>th</sup>

No trees near.

Land gently rolling.

Roll -  $\frac{1}{2}$  rate.

No timber.

Township 15 North Range 1 West

6th Salt River Meridian

East

on a random line between sections 23<sup>rd</sup> & 26.

var.  $13^{\circ} 56'$  East.

- 23.00 Road bears N. W. & S. E.
- 40.00 Set a temporary  $\frac{1}{4}$  section corner post.
- 80.00 Intersect the N. & S. Line 11 miles south  
from the corner to sections 23, 24, 25  
and 26, from which corner I run,  
S.  $89^{\circ} 55'$  W.

on true line between sections 23<sup>rd</sup> & 26.

var.  $13^{\circ} 56'$  East.

- 40.00 Set a  $\frac{1}{4}$  section corner post in a mound  
and pits as per instructions

No trees near.

- 80.00 The corner to sections  
22, 23, 26<sup>th</sup> & 24.

Land gently rolling

Soil - 1<sup>st</sup> rate.

No timber.

Township 15 North, Range 1 West.  
 6th and Salt River Meridian

No North.

between sections 22<sup>nd</sup> & 23.  
 Var. 13° 56' East.

18.50 Road bears N. 31.° E. S. E.

40.00 Set a 1/4 section corner post on  
 a mound and pits as per instructions.  
 No trees near.

80.00 Set a post on a mound and pits  
 as per instructions for the  
 corner to sections  
 14, 15, 22<sup>nd</sup> & 23.  
 No trees near.

Land gently rolling.  
 Good 1<sup>st</sup> rate  
 No timber.

Township 15 North, Range 1 West.  
 Tada & Salt River Meridian  
 to East.

in a random line between sections 14<sup>th</sup> & 23<sup>rd</sup>  
 var.  $13^{\circ}56'$  East

- 40.00 Set a temporary  $\frac{1}{4}$  section corner post.  
 80.12 Intersect the N.  $\frac{1}{2}$  S. Line at the corner  
 to sections 13. 14. 23<sup>rd</sup> & 24<sup>th</sup> from which  
 corner I run

West.

on true line between sections 14<sup>th</sup> & 23<sup>rd</sup>  
 var.  $13^{\circ}56'$  East

- 40.06 Set a  $\frac{1}{4}$  section corner post in  
 a mound and set a pin in  
 structure.

- 80.12 No trees near  
 the corner to sections.  
 14. 15. 22<sup>nd</sup> & 23<sup>rd</sup>.

Land rolling  
 Red - 1<sup>st</sup> rate  
 No timber

Township 15 North, Range 1 West.

Edo<sup>3</sup>/<sub>4</sub> Salt River Meridian

1<sup>st</sup> March. between sections 14<sup>3</sup>/<sub>4</sub> & 15

Var.  $13^{\circ}56'$  East.

40.00 Set a <sup>3</sup>/<sub>4</sub> section corner post in a mound and pits as per instructions. No trees near.

80.00 Set a post in a mound and pits as per instructions, for the corner to sections 10, 11, 14<sup>3</sup>/<sub>4</sub>, 15. No trees near.

Land - undulating. Soil - 1<sup>st</sup> rate. No timber.

East. on a random line between sections 11<sup>3</sup>/<sub>4</sub> & 12.

Var.  $13^{\circ}56'$  East.

40.00 Set a temporary <sup>3</sup>/<sub>4</sub> section corner post.

80.00<sup>7</sup> Intersect the N. & S. Line 10 miles North from the corner to sections 11, 12, 13<sup>3</sup>/<sub>4</sub>, 14, from which corner I run

$N. 89^{\circ}56' W.$  a true line between sections 11<sup>3</sup>/<sub>4</sub> & 12.

Var.  $13^{\circ}56'$  East.

40.03 Set a <sup>3</sup>/<sub>4</sub> section corner post in a mound and pits as per instructions. No trees near.

80.00<sup>7</sup> The corner to sections 10, 11, 14<sup>3</sup>/<sub>4</sub>, 15.

Land - undulating.

Soil - 1<sup>st</sup> rate. No timber.



Township 15 North Range 1 West  
 Gds & Salt River Meridian  
 No North.

between sections 10 & 11  
 var. 13°56' East

40.00 Set a 1/4 section corner post in a mound and pits as per instructions  
 No trees near.

80.00 Set a post in a mound and pits as per instructions for the corner to section  
 2, 3, 10 & 11.

No trees near.

Land undulating.  
 Soil - 1<sup>st</sup> rate.  
 No timber

Township 15 North, Range 1 West.

6th and Salt River Meridian

6th East.

in a random line between sections 2<sup>nd</sup> & 11  
Var. 13° 56' East.

40.00 Set a temporary 4<sup>th</sup> section corner post.

8 80.06 Subjoin the 76<sup>th</sup> and S. Line at the corner  
to sections 1, 2, 11 & 12, from which  
corner line -

West.

on true line between sections 2<sup>nd</sup> & 11.  
Var. 13° 56' East.

4 40.03 Set a 1<sup>st</sup> section corner post in a  
mound and pits as per instructions

No trees near.

80.06 The corner to sections  
2, 3, 10 & 11.

Land gently rolling.

Soil - 1<sup>st</sup> rate

No timber

Township 15 North Range 1 West  
 T15N R1W Salt River Meridian  
 S. North.

on a random line between sections 2 & 3.  
 Var.  $13^{\circ} 56'$  East.

40.00 Set a temporary  $\frac{1}{4}$  section corner past  
 80.1st Intersect the North boundary line  
 16 links west from the corner to  
 sections 2, 3, 24 & 35, from which  
 corner I run —  
S.  $0^{\circ} 4'$  W.

on true line between sections 2 & 3.

Var.  $13^{\circ} 56'$  East.

40.1st Set a  $\frac{1}{4}$  section corner past in  
 a mound and pile as per instructions  
 No trees near.

80.1st The corner to sections  
 2, 3, 10 & 11.

Land rolling.

Corb 2<sup>d</sup> rate.

No timber.

Dec 19<sup>th</sup> 1871

Township 15 North, Range 1 West.  
 Tada <sup>and</sup> Salt River Meridian  
Sec North

between sections 33<sup>q</sup> & 34  
 var. 13' 56' East

40.00 Set a 1<sup>st</sup> section corner post in  
 a mound and pits as per in-  
 structions. No trees near.

80.00 Set a post in a mound and  
 pits as per instructions for the  
 corner to sections  
 27, 28, 33<sup>q</sup> & 34  
 No trees near.  
 Land smooth rolling prairie.  
 Soil - 1<sup>st</sup> rate.  
 No timber.

Township 15 North. Range 1 West.

Idaho Salt River Meridian

to East.

on a random line between sections 27<sup>th</sup> & 34<sup>th</sup>.  
var. 13° 56' East.

40.00 Set a temporary 1/4 section corner post.

80.00 Intersect the N<sup>th</sup> S. Line at the corner  
to sections 26, 27, 34<sup>th</sup> & 35. from  
which corner I run -

West.

on true line between sections 27<sup>th</sup> & 34<sup>th</sup>  
var. 13° 56' East

40.00 Set a 1/4 section corner post in a  
mound and pits as per instructions

No trees near.

80.00 The corner to sections

27, 28, 33<sup>th</sup> & 34<sup>th</sup>.

Land rolling prairie

Orch - 1<sup>st</sup> rate.

No timber.

Township 15 North Range West  
 Gila Salt River Meridian  
 Sec 14 North

between sections 27<sup>th</sup>, 28<sup>th</sup>  
 var. 13' 56" East.

40.00 Set a 1/4 section corner post in  
 a mound and pits as per in-  
 structions. No trees near.

80.00 Set a post in a mound and  
 pits as per instructions for the  
 corner to sections

21, 22, 27<sup>th</sup>, 28.

No trees near.

Land rolling prairie.

Soil 1<sup>st</sup> rate.

No timber.

Township 15 North, Range 1 West.

Gila <sup>ms</sup> Salt River Meridian

No East

on random line between sections 22<sup>ms</sup> & 27.  
var. 13° 56' East

40.00 Set a temporary <sup>1/4</sup> section corner post  
80.08 Intersect the N<sup>ms</sup> S. Line at the  
corner to sections 22, 23, 26<sup>ms</sup> & 27.  
from which corner I run

West

on true line between sections 22<sup>ms</sup> & 27.  
var. 13° 56' East.

40.04 Set a <sup>1/4</sup> section corner post in  
a mound and pits as per instructions  
No trees near.

80.08 The corner to sections  
21, 22, 27<sup>ms</sup> & 28.

Land, rolling prairie  
Soil - <sup>ph</sup>urate.  
No timber

Township 15 North. Range 1 West  
 6th & Salt River Meridian  
 1<sup>st</sup> North.

between sections 21 & 22  
 var.  $13^{\circ} 56'$  East.

40.00 Set a 4<sup>th</sup> section corner post in  
 a mound and pits as per in-  
 structions. No trees near.

64.00 Road bears N. W.  $\frac{1}{4}$  S. E.

80.00 Set a post in a mound and  
 pits as per instructions for the  
 corner to sections  
 15, 16, 21 & 22.

No trees near.  
 Sand rolling prairie.  
 Soil - 1<sup>st</sup> rate.  
 No timber.



Township 15 North, Range 1 West.  
 T15N R1W M<sup>3</sup> Sec 22  
 East.

on a random line between sections 15 & 22.  
 Var.  $13^{\circ} 56'$  East.

40.00 Set a temporary 1/4 section corner post  
 80.00 Intersect the N<sup>3</sup>/<sub>4</sub> S. Line of line  
 south from the corner to sections  
 14, 15, 22 & 23, from which corner run  
S.  $89^{\circ} 56'$  W.

on true line between sections 15 & 22.  
 Var.  $13^{\circ} 56'$  East

40.00 Set a 1/4 section corner post on  
 a mound and pits as per instructions  
 No trees near.

80.00 The corner to sections  
 15, 16, 21 & 22.

Land - rolling prairie.  
 Soil - ph. rate.  
 No timber.

Township 15 North. Range 1 West  
 Td. 3<sup>rd</sup> Salt River Meridian  
 Sec. North.

between sections 15<sup>th</sup> & 16<sup>th</sup>  
 var.  $13^{\circ} 56'$  East.

40.00 Set a 1/4 section corner post in  
 a mound and pits as per in-  
 structions. No trees near.

80.00 Set a post in a mound and  
 pits as per instructions for  
 the corner to sections  
 9, 10, 15<sup>th</sup> & 16.

No trees near

Land rolling  
 Soil 1<sup>st</sup> rate.  
 No timber.

Township 15 North, Range 1 West  
 Gila Salt River Meridian  
 To East

on random line between sections 10<sup>1/2</sup> & 15  
 var. 13' 56" East.

40.00 Set a temporary <sup>1/4</sup> section corner post.

80.18 Intersect the N. <sup>1/2</sup> S. Line at the  
 corner to sections 10, 11, 14<sup>1/2</sup> & 15  
 from which corner run -  
West.

on true line between sections 10<sup>1/2</sup> & 15.  
 var. 13' 56" East

40.09 Set a <sup>1/4</sup> section corner post in  
 a mound and pits as per in-  
 structions

No trees near.

80.18 The corner to sections  
 9, 10, 15<sup>1/2</sup> & 16.

Land rolling

Soil <sup>1/4</sup> rate.

No timber.

Township 15 North. Range 1st West.

6th Salt River Meridian

No. March.

between sections 9<sup>th</sup> & 10.

var. 13° 56' East.

40.00 Set a  $\frac{1}{4}$  section corner post in a mound  
and pile as per instructions.

No trees near.

80.00 Set a post in a mound and pile  
as per instructions for the cor-  
ner to sections

" 3, 4, 9<sup>th</sup> & 10.

No trees near.

Land ralling:

Doc 1<sup>st</sup> rate.

No timber.

Township 15 North, Range 1 West  
 T15N R1W Meridian  
 Sec. East.

on random line between sections 3 & 10  
 var.  $13^{\circ}56'$  East

40.00 Set a temporary 1<sup>st</sup> section corner post  
 49.92 Intersect the N. 1/4 S. Line 13 links  
 south from the corner to section  
 2.3.10 & 11, from which corner I run  
S. 89°54' W.

on true line between sections 3 & 10  
 var.  $13^{\circ}56'$  East

39.96 Set a 1<sup>st</sup> section corner post in  
 a mound and pits as per instructions

No trees near.

49.92 The corner to sections  
 3, 4, 9 & 10.

Land rolling

Coil - 1<sup>st</sup> rate

No Corning

Township 15 North, Range 1 West.

6th Salt River Meridian

North.

on random line between sections 3 & 4.  
var. 13° 56' East

40.00 Set a temporary 4<sup>th</sup> section corner post.

80.12 Intersect the North boundary line  
at the corner to sections 3, 4, 33  
and 34, from which corner I run -  
South.

on true line between sections 3 & 4.  
var. 13° 56' East.

40.12 Set a 4<sup>th</sup> section corner post in a  
ground and pits as per instructions

80.12 No trees near.  
The corner to sections

3, 4, 9 & 10.

Land selling.

Soil <sup>1<sup>st</sup></sup> rate.  
No timber.

Dec 20<sup>th</sup> 1871

Township 15 North, Range 1 West

5th Salt River Meridian

4th North

between sections 32<sup>nd</sup> & 33

var. 13° 56' East

40.00 Set a <sup>1st</sup> section corner post in a mound and pits as per instructions  
No trees near.

80.00 Set a post in a mound and pits as per instructions for the corner to sections

28, 29, 32, <sup>nd</sup> & 33.

No trees near.

Land - rolling prairie

Soil - 1<sup>st</sup> rate.

No timber.

Township 15 North Range 1 West

Gila Salt River Meridian

Sec. East

on random line between sections 28<sup>33</sup> & 33  
var. 13° 56' East.

40.00 Set a temporary 1/4 section corner post.

80.05 Intersect the N<sup>th</sup> S. Line at the  
corner to sections 27, 28, 33<sup>34</sup>  
34, from which corner I run -  
West.

on true line between sections 28<sup>33</sup> & 33.  
var. 13° 56' East.

40.02 Set a 1/4 section corner post in  
a mound and pits as per instructions

No trees near.

80.05 The corner to sections  
28, 29, 32<sup>33</sup> & 33.

Land rolling.

Soil 1<sup>st</sup> rate.

No timber.



Township 15 North, Range 1 West

5th Salt River Meridian

4th North

between sections 28<sup>th</sup> & 29

var. 13° 56' East

40.00 Set a 1/4 section corner post in a mound and pits as per instructions.

No trees near.

80.00 Set a post in a mound and pits as per instructions for the corner to sections

20, 21, 28<sup>th</sup> & 29.

No trees near.

Land rolling.

Coil 1<sup>st</sup> rate

No timber

Township 15 North, Range 1 West.  
 6th Salt River Meridian  
 1st East.

on random line between sections 21<sup>st</sup> & 25<sup>th</sup>.  
 var. 13° 56' East.

20.00 Set a temporary <sup>1/4</sup> section corner post.  
 80.00 Intersect the N<sup>th</sup> S. Line at the  
 corner to sections 21, 22, 27 & 28  
 from which corner I run -  
West.

on true line between sections 21<sup>st</sup> & 25<sup>th</sup>.  
 var. 13° 56' East.

40.00 Set a <sup>1/4</sup> section corner post  
 in a mound and pits as per  
 instructions. No trees near.

80.00 The corner to sections  
 20, 21, 28 & 29.  
 Land rolling prairie  
 Soil 1<sup>st</sup> rate.  
 No timber

Township 15 North, Range 1 West.  
 T14<sup>th</sup> Salt River Meridian  
North.

between sections 20<sup>th</sup> & 21<sup>st</sup>  
 var.  $13^{\circ} 56'$  East

40.00 Set a  $\frac{1}{4}$  section corner post in a mound and pile as per instructions  
 No trees near.

80.00 Set a post in a mound and pile as per instructions for the corner to sections  
 16, 17, 20<sup>th</sup> & 21<sup>st</sup>.

No trees near  
 Land - gently rolling prairie  
 Soil -  $1\frac{1}{2}$  rate.  
 No timber.

Township 15 North. Range 1 West  
 6th Salt River Meridian  
 1st East.

on random line between sections 16<sup>and</sup> 21.  
 var. 13° 56' East

40.00 Set a temporary 1/4 section corner post

80.00 Intersect the N<sup>and</sup> S. Line 8 limits  
 south from the corner to sections  
 15, 16, 21<sup>and</sup> 22. from which corner  
 I run -

S. 89° 05' 4" W.

on true line between sections 16<sup>and</sup> 21.  
 var. 13° 56' East.

40.00 Set a 1/4 section corner post in  
 a mound and pits as per instruction

80.00 The corner to sections  
 16, 17, 20<sup>and</sup> 21.  
 No trees near.

Land gently rolling prairie  
 Soil - phosphate  
 No timber

Township 15 North, Range 1 West  
 6th<sup>th</sup> Salt River Meridian  
 No. North.

between sections 16<sup>th</sup> & 17<sup>th</sup>  
 var. 13° 56' East

40.00 Set a  $\frac{1}{4}$  section corner post in  
 a mound and pits as per instructions  
 No trees near.

80.00 Set a post in a mound and  
 pits as per instructions for  
 the corner to sections  
 8, 9, 16<sup>th</sup> & 17<sup>th</sup>.  
 No trees near.

Land - gently rolling prairie  
 Soil - 1<sup>st</sup> rate.  
 No timber.

Township 15 North, Range West.  
 Side of Salt River Meridian  
 to East.

on random line between sections 9<sup>th</sup> & 16.

var.  $13^{\circ} 56'$  East

177.75 Road bears N.W.  $\frac{1}{2}$  S.E.

40.00 Set a temporary  $\frac{1}{4}$  section corner post

80.14 Intersect the N.  $\frac{1}{2}$  S. Line at the  
 corner to sections 9, 10, 15  $\frac{1}{2}$  16  
 from which corner I run -  
West.

on true line between sections 9<sup>th</sup> & 16.

var.  $13^{\circ} 56'$  East

40.07 Set a  $\frac{1}{4}$  section corner post in  
 a mound and pits as per instruction

80.14 The corner to sections  
 No trees near

8, 9, 16  $\frac{1}{2}$  17.

Land rolling prairie.

Gravel -  $\frac{1}{2}$  rate.

No timber

Traverse 15 North Range 1 West  
Elev <sup>m</sup> Salt River Meridian

To North

between sections 8 & 9.

var. 13° 56' East

22.50 Road bears N.W. & S.E.

40.00 Set a 1/2 section corner post in  
a mound and pile as per instruction

No trees near.

50.00 Set a post in a mound and pile  
as per instructions for the  
corner to sections

4, 5, 8 <sup>and</sup> 9.

No trees near.

Land - gently rolling prairie  
Soil - <sup>st</sup> <sub>rate</sub>

No timber.

Township 13 North. Range 1 West  
 Tada <sup>3/4</sup> Salt River Meridian  
 1/2 East.

on random line between sections 4<sup>th</sup> & 9.  
 var.  $13^{\circ} 56'$  East

40.00 Set a temporary <sup>1/4</sup> section corner post.  
 80.08 Intersect the <sup>16</sup> S. Line at the  
 corner to sections 3, 4, 9 <sup>and</sup> 10,  
 from which corner I run -  
West.

on true line between sections 4<sup>th</sup> & 9.  
 var.  $13^{\circ} 56'$  East.

40.04 Set a <sup>1/4</sup> section corner post on  
 a mound and pits as per instruction.

No trees near  
 80.08 the corner to sections  
 4, 5, 8 <sup>and</sup> 9.

Land - gently rolling  
 Soil - 1<sup>st</sup> rate  
 No timber



Township 15 North, Range 1 West  
 Tada & Salt River Mercedene  
 Co North.

on random line between sections 4 & 5  
 var.  $13^{\circ} 56'$  East.

40.00 Set a temporary 1<sup>st</sup> section corner post.  
 80.16 Intersect the North boundary  
 at the corner to sections 4, 5  
 32, & 33, from which corner Survey  
South

on true line between sections 4 & 5  
 var.  $13^{\circ} 56'$  East.

40.16 Set a 1<sup>st</sup> section corner post in  
 a mound and pit as per instructions  
 No trees near.

80.16 The corner to sections  
 4, 5, 8 & 9.  
 Sand - rolling gravel.  
 Soil - 1<sup>st</sup> rate.

No timber

Dec 21<sup>st</sup> 1871

Township 13 North, Range 1 West  
 T13<sup>and</sup> Salt River Meridian  
 L<sup>1</sup> North

between sections 31<sup>and</sup> 32  
 var. 13° 56' East

40.00 Set a  $\frac{1}{4}$  section corner post in  
 a mound and pits as per in-  
 structions

No trees near.

80.00 Set a post in a mound  $\frac{1}{4}$  pits  
 as per instructions for the  
 corner to sections

29. 30. 31 <sup>and</sup> 32.

No trees near.

Land gently rolling  
 Soil - 1<sup>st</sup> rate.

No timber.

Township 15 North Range 1 West  
 Tola <sup>and</sup> Salt River Meridian  
 No. East.

in a random line between sections 29 & 32  
 var.  $13^{\circ} 56'$  East.

40.00 Set a temporary  $\frac{1}{4}$  section corner post  
 50.00 Intrench the  $\frac{1}{4}$  S. S. line at the  
 corner to sections 28, 29, 32 <sup>and</sup> 33  
 from which corner I run —  
West.

in a true line between sections 29 <sup>and</sup> 32.  
 var.  $13^{\circ} 56'$  East.

40.00 Set a  $\frac{1}{4}$  section corner post in  
 a mound and pits as per instructions  
 No trees near.

80.00 The corner to sections  
 29, 30, 31 <sup>and</sup> 32.  
 Land - gently rolling  
 Soil -  $1^{\text{st}}$  rate.  
 No timber.

Township 15 North, Range 1 West,  
 6th Salt River Meridian  
 6th West.

on random line between sections 30<sup>th</sup> & 31.  
 var. 13° 56' East.

39.20 Granite Creek, 200 links wide, runs N. (dry bed).

40.00 Set a temporary 1/4 section corner post.

41.00 Enter field bears N<sup>45</sup> S.

65.00 Leave field bears N<sup>45</sup> S.

70.00 Road bears N<sup>45</sup> S.

79.20 Intersect the west boundary line  
 at the corner to sections 30, 31.

25<sup>th</sup> & 36<sup>th</sup> from which corner I run  
East.

on a true line between sections 30<sup>th</sup> & 31.  
 var. 13° 56' East

39.30 At the 1/4 section corner point in Creek, and set a witness 1/4 section corner post  
 in mound and pits as per instructions  
 80 links west from true corner.

79.20 No trees near.  
 The corner to sections 29, 30, 31<sup>th</sup> & 32.  
 Land level. Soil 1<sup>st</sup> rate. No timber.

Township 15 North. Range 1 West.  
 6th<sup>am</sup> Salt River Meridian  
 15 North.

between sections 29 & 30  
 var. 13° 56' East

40.00 Set a 1/2 section corner post in a  
 mound <sup>2</sup>/<sub>3</sub> pits as per instructions  
 No trees near

60.00 Range runs N. W.

80.00 Set a Stone 16 x 8 x 8 inches as per  
 instructions for the corner to  
 sections

19.20.29<sup>am</sup> 30.

No trees near

Land level.

Soil - 1<sup>st</sup> rate.

No timber

Township 15 North, Range 1 West.

Side of Salt River Meridian

to East

on random line between sections 20<sup>th</sup> & 29.

var. 13° 56' East

40.00 Set a temporary 1/4 section corner post.

80.10 Intersect the N<sup>th</sup> & S. Line of land  
North of the corner to sections  
20, 21, 28<sup>th</sup> & 29. from which corner

run -

N. 89° 57' W.

on true line between sections 20<sup>th</sup> & 29.

var. 13° 56' East.

40.00 Set a 1/4 section corner post on  
a measured and sets as per in-  
structions

No trees near.

80.10 The corner to sections  
19, 20, 29<sup>th</sup> & 30.

Land lead -

Oil - 1<sup>st</sup> rate.

No timber

Township 15 North Range 1 West  
 T15N R1W S1E  
 Salt River Meridian

No. West

on random line between sections 19 & 30.  
 Var.  $13^{\circ}56'$  East

- 2.00 Granite creek 100 links wide, and runs north  
 20.00 Hence 5 chains south of line  
 40.00 Set a temporary  $\frac{1}{4}$  section corner post.  
 46.50 Road bears  $N^{90}W$ .  
 78.90 Intersect the west boundary line  
 at the corner to sections 19, 30  
 24 & 25, from which corner run  
East

on true line between sections 19 & 30.  
 Var.  $13^{\circ}56'$  East.

- 38.90 Set a  $\frac{1}{4}$  section corner stone  
 10x10x8 inches as per instructions  
 No trees near.  
 78.90 The corner to sections  
 19, 20, 29 & 30.  
 Land lock -  
 Oil - Private. No timber.

Township 15 North. Range West  
 1<sup>st</sup> Sec. Salt River Meridian  
 1<sup>st</sup> North.

between sections 19<sup>th</sup> & 20<sup>th</sup>  
 var.  $13^{\circ} 56'$  East.

40.00 Set a  $\frac{1}{4}$  section corner post in  
 a mound and pits as per in-  
 structions

No trees near

80.00 Set a post in a mound and pits  
 as per instructions for the corner  
 to sections

1<sup>st</sup> y. 18. 19<sup>th</sup> & 20<sup>th</sup>.

No trees near

Lined lead.

Coil 1<sup>st</sup> rate.

No timber.



Township 15 North, Range 1 West

Edw. M. Salt River Meridian

No. East

on random line between sections 17<sup>th</sup> & 20  
var. 13° 56' East

40.00 Set a temporary 1/4 section corner post.

80.16 Intersect the N<sup>th</sup> S. Line 11 links  
south from the corner to sections  
16, 17, 20<sup>th</sup> & 21. from which corner  
I run.

S. 89° 55' W.

on true line between sections 17<sup>th</sup> & 20  
var. 13° 56' East.

40.08 Set a 1/4 section corner post on  
a mound and pits as per in-  
structions. No trees near

80.16 The corner to sections  
17, 18, 19<sup>th</sup> & 20.

Land calling<sup>ing</sup> the land

Soil 1<sup>st</sup> rate

No timber

Township 15 North, Range 1 West.  
 6<sup>th</sup> Sec Salt River Meridian  
 R. West.

on random line between sections 18<sup>th</sup> & 19.  
 var.  $13^{\circ} 56'$  East.

- 10.00 Granite creek 100 links wide, runs North  
 29.00 Road runs N<sup>W</sup> & S.  
 40.00 Set a temporary  $\frac{1}{4}$  section corner post  
 49.10 Intusich the West boundary at  
 the corner to sections 18, 19, 13  
 & 24, from which corner Iron  
East.

on true line between sections 18<sup>th</sup> & 19.  
 var.  $13^{\circ} 56'$  East.

- 39.10 Set a  $\frac{1}{4}$  section corner stone  
 12x10x8 inches and marked as  
 per instructions  
 No trees near.  
 49.10 The corner to sections  
 17, 18, 19 & 20.  
 Sand loam, Soil 1<sup>st</sup> rate  
 No timber

Township 15 North, Range 1 West  
 Tola. 3<sup>rd</sup> Salt River Meridian

North

between sections 1<sup>st</sup> & 18.

var. 13° 56' East

20.00 Run or about 20 chains west of line

40.00 Set a <sup>1/2</sup> section corner stone 16 x 10  
 x 8 inches and marked as per  
 instructions.

No trees near.

80.00 Set a stone 12 x 12 x 10 inches and  
 marked as per instructions for  
 the corner to sections

17. 8. 17<sup>th</sup> 18.

No trees near

Land lead.

Coil - 1<sup>st</sup> rate.

No timber.

Dec 22 1871

Township 15 North, Range 1 West.

Side of Salt River Meridian  
to East.

on random line between sections 8<sup>th</sup> & 17<sup>th</sup>.  
var.  $13^{\circ} 56'$  East.

40.00 Set a temporary  $\frac{1}{4}$  section corner post.  
80.00 Intersect the N.  $\frac{1}{4}$  S. Line at the  
corner to sections 8, 9, 16<sup>th</sup> & 17<sup>th</sup>.  
from which corner I run -  
West.

on true line between sections 8<sup>th</sup> & 17<sup>th</sup>.  
var.  $13^{\circ} 56'$  East.

40.00 Set a  $\frac{1}{4}$  section corner post on  
a meand  $\frac{3}{4}$  mile as per instructions

80.00 No trees near  
the corner to sections  
17, 8, 17<sup>th</sup> & 18.

Land lead -  
Soil Phosphate.  
No timber.

Township 15 North Range 1 West

Side <sup>3</sup>/<sub>4</sub> Salt River Meridian

to West

on a random line between sections <sup>7</sup>/<sub>4</sub> 18  
var.  $13^{\circ}56'$  East.

- 1.50 Granite Creek 100 links wide, runs North (no water)
- 8.00 Field bears N. <sup>3</sup>/<sub>4</sub> S.
- 28.00 Leave field, bears N <sup>3</sup>/<sub>4</sub> S.
- 30.00 Road bears N <sup>3</sup>/<sub>4</sub> S.
- 40.00 Set a temporary <sup>1</sup>/<sub>4</sub> section corner post.
- 78.80 Intersect the West boundary line  
14 links south from the corner  
to sections <sup>7</sup>/<sub>4</sub> 18, 12 <sup>3</sup>/<sub>4</sub> 13, from which  
corner true  
S.  $89^{\circ}54'$  E.
- on true line between sections <sup>7</sup>/<sub>4</sub> 18  
var.  $13^{\circ}56'$  East
- 38.80 Set a <sup>1</sup>/<sub>4</sub> section corner stone 12 x 10 x 7 inches  
and marked as per instructions. No trees near.
- 78.80 The corner to sections <sup>7</sup>/<sub>4</sub> 18, 12 <sup>3</sup>/<sub>4</sub> 13.  
Land lead, Soil <sup>1</sup>/<sub>4</sub> rate.  
No timber.

Township 15 North, Range 1 West,

S. 1/2 Salt River Meridian

S. 1/2 North.

between sections 7<sup>th</sup> & 8.

var. 13° 56' East.

40.00 Set a 1/4 section corner stone 10 x 10  
x 7 inches and marked as per in-  
structions.

No trees near.

78.00 Granite creek 100 yards wide runs N. E.

80.00 Set a post in a mound <sup>3</sup>/<sub>4</sub> pits as  
per instructions for the corner  
to sections

S. 6. 7<sup>th</sup> & 8.

No trees near.

Land level.

Soil - 1<sup>st</sup> rate.

No timber.

Township 15 North, Range 1 West

6th 4<sup>th</sup> Salt River Meridian

Sec East.

on a random line between sections 5<sup>th</sup> & 8.  
var.  $13^{\circ}56'$  East

- 1.10 Granite Creek 100 links wide runs North  
40.00 Set a temporary 4<sup>th</sup> section corner post  
80.06 Intersect the N. 4<sup>th</sup> S Line 10 links south  
from the corner to sections 4, 5, 8 & 9.  
from which corner Iron.  
S.  $89^{\circ}56'$  N.

on true line between sections 5<sup>th</sup> & 8  
var.  $13^{\circ}56'$  East

- 40.03 Set a 4<sup>th</sup> section corner post in  
a mound and pits as per instructions  
No trees near.

- 80.06 <sup>N</sup> true corner to sections  
5, 6, 7 & 8

Land level

Soil 1<sup>st</sup> rate.

No timber.

Township 15 North, Range 1 West.  
 6th and Salt River Meridian  
 6th West.

on random line between sections 6<sup>th</sup> & 7<sup>th</sup>.  
 var. 13° 56' East

10.00 West Channel of Grande Lacs 100  
 links wide, runs north.

19.50 Road bears N <sup>4</sup>/<sub>4</sub> S.

40.00 Set a temporary <sup>1</sup>/<sub>4</sub> section corner post.

78.70 Intersect the West boundary 17 links  
 south from the corner to sections  
 6.7.1 & 12. from which corner runs  
 S. 89° 53' E.

on true line between sections 6<sup>th</sup> & 7<sup>th</sup>.  
 var. 13° 56' East.

38.70 Set a <sup>1</sup>/<sub>4</sub> section corner stone 16 x 12 x 7  
 inches and marked as per instructions.

No trees near.  
 78.70 The corner to sections

5.6.7 & 8.

Land level. Soil <sup>pt</sup> <sub>irate</sub>  
 No timber.



Township 15 North Range West  
 7th & Salt River Meridian  
 S. North

on a random line between sections 5 & 6  
 Var.  $13^{\circ}56'$  East

- 10.00 Granite Creek 100 links wide runs N.E.  
 35.00 House 20 chains East of line  
 40.00 Set a temporary  $\frac{1}{4}$  section corner post.  
 46.00 Granite Creek 100 links wide runs N.W.  
 68.00 Road runs N.E.  
 80.20 Intersect the N. boundary at the corner  
 to sections 5, 6, 31 & 32, from which  
 corner I run

South. on true line between sections 5 & 6,  
 Var.  $13^{\circ}56'$  East.

- 40.20 Set a  $\frac{1}{4}$  section corner post in a  
 mound and pits as per instructions  
 No trees near.

- 80.20 The corner to sections 5, 6, 7 & 8.  
 Land lead - Soil - 1<sup>st</sup> rate.  
 No timber.

Dec 23<sup>rd</sup> 1871

## General Description

The lands in this Township are of superior quality, mostly composed of a rich sandy alluvial soil, and when water can be procured for irrigation the crops yield abundantly.

There is no timber in this Township.

O. W. Foreman  
As. Deputy Surveyor

Surveyors General's Office  
Washington D.C. March 20, 1872

The foregoing field notes of the survey of the subdivision lines of Township 15 N. Range 1 N. of the Gila and Salt River Base and Meridian lines in the Territory of Arizona Executed by S. W. Foreman, U. S. Dep. Surveyor, under his contract dated October 14, 1871, having been critically examined, the necessary corrections and explanations made, the said field notes and the surveys they describe are hereby approved.

John W. Mason  
Surveyor General.