

BOOK 1046

No. 1046¹

Field Notes

of the Survey of the Sub-
division lines of Townships
16 N. Range 1 West, of the
Gila and Salt River Meridian
Arizona Territory. by
S. H. Foreman, U. S. Dep. Surveyor
under his contract of October 4. 1871
Survey commenced Dec 11. 1871
Survey completed Dec. 16. 1871

BOOK 1046

Manuscript sent to Commissioner
March 20. 1872.

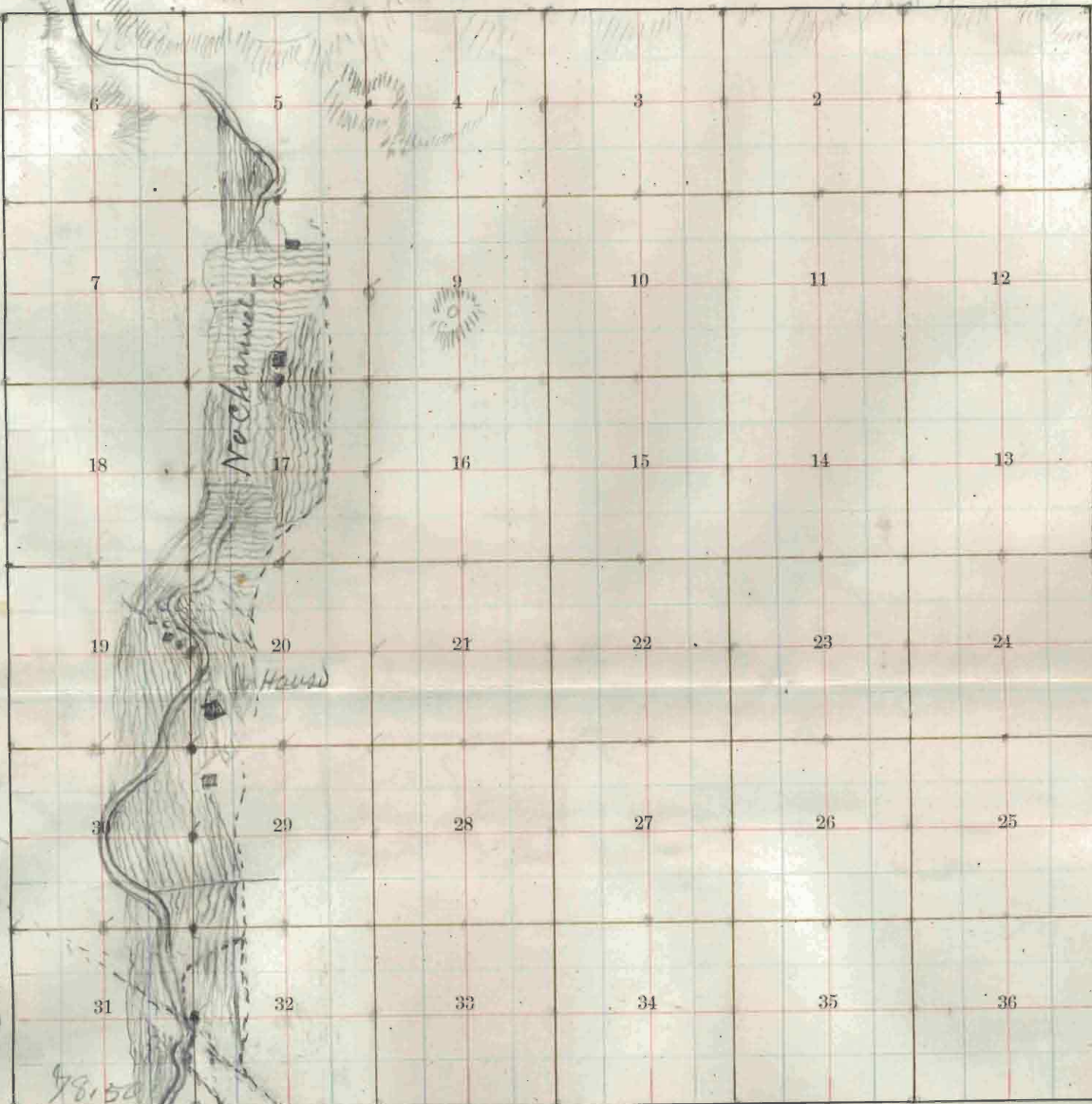
No. 1046

1046

TOWNSHIP 16 RANGE 1 West MERIDIAN

Var. 14° 05' E

BOOK 1046



Var. 14° 05' E

Var. 14° 00' E

Bancroft's Blank, Township Plot.

A. L. Bancroft & Company, 721 Market St., San Francisco.

- Meridian Line,
- Base Line,
- Standard Line,
- Township Lines,
- Section Line,
- Meander Lines,
- Office Work,
- Ranch Lines Re-surveyed,

BOOK 1046

Preliminary Oaths of Assistants.

~~I, _____ do solemnly swear that I will well and truly perform the duties of Compassman, according to instructions given me, and to the best of my skill and ability.~~

~~Subscribed and sworn to before me, this _____ day of
187~~

~~U. S. Deputy Surveyor.~~

—♦♦♦—

We, *Geo. Ellwood* and
Joseph Ferrel
do solemnly swear that we will faithfully execute the duties of Chain Carriers; that we will level the chain upon uneven

ground, and plumb the tally pins, whether by sticking or dropping the same; that we will report the true distance to all notable objects, and the true length of all lines, that we will assist in measuring, to the best of our skill and ability.

Joseph Plumer
George Ellwood
~~Frederick Smith~~

Subscribed and sworn to before me, this 9th day of
December 1871

U. S. Deputy Surveyor.

Edw. Wells
Clerk Dist Court
3^d District.



We, Fred. Snider & James Baker
 do solemnly swear that ^{we} ~~I~~ will well and truly perform the
 duties of Assessor & Collector ^{in respect}
 according to instructions given ^{us} ~~me~~, and to the best of ^{our} ~~my~~
~~the~~ skill and ability.

Fred. Snider
 James Baker

Subscribed and sworn to before me, this 9th
 day of December 1871



U. S. Deputy Surveyor.

Edw. Wells
 Clerk Dist Court
 3^d District



10

10

do so
dutie
accor
skill

day

10

BOOK 1046

4-674.

Township 16 N., R. 12, S. 2, 3, 32 N.

| | | | | | | | | | | |
|----|----|----|----|----|----|----|----|----|----|----|
| 6 | 58 | 5 | 42 | 4 | 31 | 3 | 20 | 2 | 11 | 1 |
| 57 | 56 | | 41 | | 30 | | 19 | | 10 | |
| 7 | 55 | 8 | 40 | 9 | 29 | 10 | 18 | 11 | 9 | 12 |
| 54 | 53 | | 39 | | 28 | | 17 | | 8 | |
| 18 | 52 | 17 | 38 | 16 | 27 | 15 | 16 | 14 | 7 | 13 |
| 51 | 50 | | 37 | | 26 | | 15 | | 6 | |
| 19 | 49 | 20 | 36 | 21 | 25 | 22 | 14 | 23 | 5 | 24 |
| 48 | 47 | | 35 | | 24 | | 13 | | 4 | |
| 30 | 46 | 29 | 34 | 28 | 23 | 27 | 12 | 26 | 3 | 25 |
| 45 | 44 | | 33 | | 22 | | 12 | | 2 | |
| 31 | 43 | 32 | 32 | 33 | 21 | 34 | 11 | 35 | 1 | 36 |

No. 1046

1E

Field Notes

of the survey of the Subdivision
Leuis of Township 16 North
of Range 1 West.

Gila & Salt River Meridian.

Arizona Territory.

By S. M. Foreman, Dep. Surveyor.

Under his contract of.

Survey commenced

Survey completed.

Township 16. North. Range 1 West
 5th Salt River Meridian
 1st North.

between sections 35th & 36.

Var. 121° East.

(as per East Boundary)

40.00 Set a ^{1/2} section corner post in a mound and pits as per instructions.
 No trees near.

80.00 Set a post in a mound and pits as per instructions for the corner to sections 25. 26. 35th & 36.
 No trees near.

Land - gently rolling prairie.
 Crib - 1st rate.

No timber.

Township 16. North. Range 1 West
 Tels $\frac{2}{3}$ Salt River Meridian

St East

on a random line between sections 25th & 36th
 var. 14° East

40.00 Set a temporary $\frac{1}{4}$ section corner post.
 80.10 Subjoin the East Boundary line at the
 corner to sections 25, 26, 30th & 31 from
 which corner I run -
West.

on true line between sections 25th & 36th
 var. 14° East

40.05 Set a $\frac{1}{4}$ section corner post in a mound
 and pits as per instructions.

No trees near.

80.10 The corner to sections
 25, 26, 35th & 36.

Land - rolling.

Orch - 1st $\frac{1}{4}$ $\frac{2}{3}$ rate.

No timber.

Township 16 North, Range 1 West
 Gila Salt River Meridian
 No. North.

between sections 25th & 26th
 var. 14° East

40.00 Set a 1/4 section corner post in a
 mound and pits as per instructions
 No trees near.

80.00 Set a post in a mound and
 pits as per instructions for the
 corner to sections
 23, 24, 25th and 26.

No trees near.
 Land - rolling.
 Soil 2nd rate.
 No timber.

Township 16 North Range 1 West

Side ^{to} Salt River Meridian

to East

on random line between sections 24th & 25th

var. 14° East

40.00 Set a temporary $\frac{1}{4}$ section corner post.

80.00 Intersect the East boundary line at
the corner to sections 24.25.19 & 31
from which corner I run

West

on true line between sections 24th & 25th

var. 14° East

40.00 Set a $\frac{1}{4}$ section corner post in
a mound and pits as per in-
struction's. No trees near

80.00 The corner to sections
23.24.25 & 26.

Land - rolling prairie.

Soil - 2nd rate.

No timber.

Township 16 North, Range 1 West
 Tada & Salt River Meridian
 1st North.

between sections 23rd & 24th
 var. 14° East

40.00 Set a 1st section corner post in a mound and pits as per instructions. No trees near.

80.00 Set a post in a mound and pits as per instructions for the corner to sections.

13. 14. 23rd 24.

No trees near.

Land - rolling prairie

Orch - 2nd rate.

No timber.

Township 16 North, Range 1 West
 6th ^{and} Salt River Meridian

As East.

on a random line between sections 13^{1/2} & 24.
 Var. 14° East

40.00 Set a temporary 1/4 section corner post.

80.20 Intersect the E 1 Boundary Line 9 links
 south from the corner to sections
 13, 24, 18^{1/2} & 19, from which corner. True -
S. 89° 56' W.

on true line between sections 13^{1/2} & 24.
 Var. 14° East

40.10 Set a 1/4 section corner post in a
 mound and pits as per instructions.

No trees near.
 80.20 The corner to sections
 13, 14, 23^{1/2} & 24.

Land - rolling.
 Soil - 2nd rate.
 No timber.

Township 16 North, Range 1 West
 5th ³/₄ Salt River Meridian
 1st North.

between sections 13³/₄ 14
 var. 14th East

40.00 Set a 14th section corner post in a
 mound and pits as per instructions.
 No trees near.

80.00 Set a post in a mound and
 pits as per instructions for the
 corner to sections
 11, 12, 13³/₄ 14.

No trees near.

Land rolling.
 Soil - Loate.
 No timber.

Township 16 North Range 1 West

Side to Salt River Meridian

East.

on random line between sections 12 & 13

var. 14° East

40.00 Set a temporary $\frac{1}{4}$ section corner post

80.08 Intersect the East Boundary line
7 links north from the corner to sections
12.13.7 & 18, from which corner I run -
N. $89^{\circ} 57'$ W.

on true line between sections 12 & 13

var. 14° East

40.04 Set a $\frac{1}{4}$ section corner post in a
mound and pits as per instructions

No trees near.

80.08 the corner to sections

11.12.13 & 14

Land - rolling.

Coib - 2^d rate.

No timber

Township 16 North, Range 1 West

Sec 4th Salt River Meridian

Sec 11th North.

between sections 11th & 12th

var. 14° East

40.00 Set a 1/4 section corner post in a mound and set as per instructions. No trees near.

80.00 Set a post in a mound and set as per instructions for the corner to sections

1, 2, 11th & 12th.

No trees near.

Quaid - rolling.

Drill - 2nd water.

No timber.

Township 16 North, Range 1 West

Old ^{and} Salt River Meridian

Sec. East

on random line between sections 1 & 12
Var. 14° East

40.00 Set a temporary 1/4 section corner post.

80.10 Intersect the East boundary line at
the corner to sections 1, 12, 6, & 7
from which corner Run -
West

on true line between sections 1 & 12.
Var. 14° East

40.05 Set a 1/4 section corner post in a
mound and sets as per instructions

80.10 No trees near
the corner to sections.

1, 2, 11 & 12.

Land - rolling
Soil - 3rd rate.

No timber.

Township 16 North, Range 1 West
 Gila & Salt River Meridian

North, on true line between sections 1st & 2^d
 var. 14° East

40.00 Set a ¹/₄ section corner post in a mound
 and pits as per instructions. No trees near.

80.00 Intersect the 4th Standard Parallel North
 at the standard corner to sections 35 & 36
 and marked the same for closing corner
 between sections 1st & 2^d.

Land rolling. Soil - 3rd rate. No timber.

Date Dec. 11th 1871

North, between sections 34th & 35th.
 var. 14° East

40.00 Set a ¹/₄ section corner post in a mound
 and pits as per instructions. No trees near.

80.00 Set a post in a mound and pits as per
 instructions for the corner to sections
 26.27, 34th & 35th. No trees near.

Land rolling prairie.
 Soil 1st rate. No timber.

Township 16 North, Range 1 West
 Sec 26 & Salt River Meridian

| | |
|-------|----------------------------------------------------------------------------------------------------------------------------------------------------------------------------------------|
| No. | <u>East.</u> on random line between sections 26 & 35. Var. 1st ^o East |
| 40.00 | Set a temporary 1/4 section corner post. |
| 80.00 | Intersect the N. & S. Line at the corner to sections 25, 26, 35 & 36. from which corner I run - <u>West.</u> on true line between sections 26 & 35 Var. 1st ^o East |
| 40.00 | Set a 1/4 section corner post in a mound and pile as per instructions. No trees near. |
| 80.00 | Then corner to sections 26, 27, 34 & 35 - Land - rolling prairie, Poib - 2 ^o rate. No timber. |

North. between sections 26 & 27.
Var. 1st^o East

| | |
|-------|----------------------------------------------------------------------------------------------------------------------------------------------------------------------------|
| 40.00 | Set a 1/4 section corner post in a mound and pile as per instructions. No trees near. |
| 80.00 | Set a post in a mound and pile as per instructions for the corner to sections 22, 23, 26 & 27. No trees near Land rolling. Poib - 2 ^o rate. No timber. |

Township 16 North Range 1 West

6th Salt River Meridian

1/4 East.

on random line between sections 23^{no} & 26
var. 124° East.

40.00 Set a temporary 1/4 section corner post.

80.18 Intersect the N. & S. Line 1/4 mile

south from the corner to sections
23, 24, 25^{no} & 26, from which
corner true -
S. 89° 54' W.

on true line between sections 23^{no} & 26,
var. 124° East

40.09 Set a 1/4 section corner post in a
ground and sets as per instructions

No trees near.

80.18 The corner to sections 22, 23, 26^{no} & 27.

Land - rolling prairie.

Soil - 2nd rate.

No timber.

Township 16 North, Range 1 West
 Sec 1st Salt River Meridian
 S. North.

between sections 22nd & 23,
 var. 124° East

40.00 Set a $\frac{1}{4}$ section corner post in a
 mound and pits as per instructions
 No trees near.

80.00 Set a post in a mound and pits
 as per instructions for the corner
 to sections

14. 15. 22 & 23.

No trees near.

Land - rolling prairie.

Soil - 2nd rate.

No timber.

Township 16 North, Range 1 West.
 6th and 7th Range Meridian
 1/2 East.

on random line between sections 14th & 23rd.
 var. 14° Each

- 40.00 Set a temporary $\frac{1}{4}$ section corner post.
 80.10 Intersect the N. $\frac{1}{2}$ S. Line at the corner
 to sections 13, 14, 23 & 24, from which
 corner I run.

West.

on true line between sections 14th & 23rd
 var. 14° Each

- 40.03 Set a $\frac{1}{4}$ section corner post in a
 mound and set as per instructions
 No trees near.
 80.10 The corner to sections
 14, 15, 22 & 23.

Land-galling.

Soil - 2nd rate.
 No timber.

Township 16 North. Range 1 West

6th and Salt River Meridian

Section
North.

between sections 14th & 15th
var. 14th East

40.00 Set a 1/4 section corner post in a mound and pile as per instructions
No trees near.

80.00 Set a post in a mound and pile as per instructions for the corner to sections 10, 11, 14th & 15th.

No trees near

Land-rolling.

Coil - 3rd rate.

No timber.

Township 16 North, Range 1 West

Side of Salt River Meridian

Chs East

on random line between sections 11th & 14th
var. 124° East

40.00 Set a temporary $\frac{1}{4}$ section corner post.

80.06 Intersect the N. & S. Line 5 links south
from the corner to sections 11, 12, 13,
& 14, from which corner I run
S. 89° 58' W.

on true line between sections 11th & 14th.
var. 124° East

40.03 Set a $\frac{1}{4}$ section corner post in a
mound and pile as per instructions

No trees near.

80.06 Run the corner to sections
10, 11, 14th & 15.

Land - nothing.

Quib - 2^d rate.

No timber.

Township 16 North, Range 1 West

Below Salt River Meridian

Section North.

between sections 10th & 11

Var. 14th East

40.00 Set a 1/4 section corner post in a mound and pits as per instructions
No trees near.

80.00 Set a post in a mound and pits as per instructions for the corner to sections

S. 3. 10th & 11

No trees near.

Land - rolling prairie.

Soil - 2nd & 3rd rate.

No timber.

Township 16 North, Range 1 West
 Tada to Salt River Meridian

East.

on random line between sections 2nd & 11
 var. 14° East.

40.00 Set a temporary 4th section corner post.
 80.00 Intersect the N. ^{1/2} S. Line 12 links
 south from the corner to sections
 1, 2, 11 th & 12. from which corner - I run
S. 89° 55' W.

on true line between sections 2nd & 11
 var. 14° East

40.00 Set a 4th section corner post in a mound
 and pits as per instructions

80.00 ^N The corner to sections
 2, 3, 10 th & 11.

No trees near.

Land - rolling.

Soil - 3rd rate.

No timber.

Township 16 North, Range 1 West
 Gila Salt River Meridian

No 1 North.

on a true line between sections 2nd & 3,
 var. 14° East.

40.00 Set a '4 section corner post in a
 mound and pits as per instructions
 No trees near.

80.12 Intersect the 24th Standard Parallel
 line North, at the standard corner
 to sections 34th & 35, and marked
 the same for the closing corner
 to sections 2nd & 3, as per instructions

Land - rolling.

Oil - 2nd & 3rd rate.

No timber.

State Dec. 12th 1871

Downship 16 North, Range 1 West-
 5th Salt River Meridian
 N. North

between sections 33^{1/2} & 34
 var. 14° East

40.00 Set a 14 section corner post in a mound ^{and} pits as per instructions
 No trees near.

80.00 Set a post in a mound and pits as per instructions for the corner to sections

27. 28. 33^{1/2} & 34.

No trees near.

Land rolling prairie.

Post - 1st rate.

No timber.

Township 16 North. Range 1 West

Side ^{and} Salt River Meridian

No. East.

on random line between sections 27^{1/2} & 34
var. 14° East

40.00 Set a temporary ^{1/4} section corner post.

80.07 Intersect the N. ^{1/2} S. Line at the
corner to sections 26, 27, 34^{1/2} & 35.
from which corner I run -

West.

on true line between sections 27^{1/2} & 34
var. 14° East

40.03 Set a ^{1/4} section corner post in a
mound and pits as per instructions

No trees near.

80.07 The corner to sections

27, 28, 33^{1/2} & 34

Land - rolling.

Corr - 2° rate.

No timber.

Township 16 North, Range 1 West

Sec 27 & Salt River Meridian

Sec North.

between sections 27 & 28.
var. 14° East

40.00 Set a 1/4 section corner post in
a mound and pits as per in-
structions

No trees near.

80.00 Set a post in a mound and
pits as per as per instructions
for the corner to sections
21, 22, 27, & 28.

No trees near.

Land - rolling prairie.

Soil - 2^d rate.

No timber.

Township 16 North. Range 1 West

6th & Salt River Meridian

East

on random line between sections 22nd & 27th
var. 14° East

40.00 Set a temporary 1/4 section corner post.

80.20 Intersect the N. & S. Line 11 links south
from the corner to sections 22, 23, 26
& 27, from which corner I run -
S. 89° 55' W.

on true line between sections 22nd & 27th
var. 14° East

40.10 Set a 1/4 section corner post in a
mound and pile as per instructions

No trees near.
80.20 The corner to sections
21, 22, 27 & 28.

Land - rolling.

Soil - 2nd rate.

No timber.

Township 16 North. Range 1 West
 5th and Salt River Meridian

North.

between sections 21st & 22nd.
 var. 1st^o East.

40.00 Set at 4 section corner stone 16 x 10
 x 8 inches and marked as per in-
 structions.

No trees near.

80.00 Set a post in post in a mound and
 sets as per instructions for the
 corner to sections

15. 16. 21st & 22nd.

No trees near.

Land - rolling.

Soil - 2nd rate.

No timber.

Township 16 North. Range 1 West
 T16^N & S11^W River Meridian
 S. East.

on random line between sections 15^N & 22.
 var. 14° East

- 40.00 Set a temporary 1/4 section corner post.
 80.16 Intersect the N. & S. Line 10 links south
 from the corner to sections 14, 15, 22
 and 23. from which corner run —
S. 89° 55' N.

on true line between sections 15^N & 22.
 var. 14° East

- 40.08 Set a 1/4 section corner post in a
 mound and pits as per instructions
 No trees near.

- 80.16 the corner to sections
 15, 16, 21^N & 22.

Land - rolling.
 Crib - 2^d rate.
 No timber

Township 16 North, Range 1 West

Gila Salt River Meridian

North.

between sections 15th & 16th
var. 1st^o East

40.00 Set a $\frac{1}{4}$ section corner post in a mound and pits as per instructions
No trees near.

80.00 Set a post in a mound and pits as per instructions for the corner to sections
9, 10, 15th & 16th.

No trees near.

Land rolling,
Ooib - 1st^o and 2nd rate.

No timber.

Township 16 North. Range 1 West

6th & Salt River Meridian

1st East.

on random line between sections 10th & 15th
var. 14° East

40.00 Set a temporary $\frac{1}{4}$ section corner post

80.12 Intersect the N. & S. Line at the
corner to sections 10. 11. 14th & 15th,
from which corner I run -

West.

on true line between sections 10th & 15th
var. 14° East

40.06 Set a $\frac{1}{4}$ section corner post in a
mound and set as per instructions

80.12 No trees near,
the corner to sections
9. 10. 15th & 16th.

Land - selling.

Coib - 2nd rate.

No timber.

Township 16 North. Range 1 West.

Gila and Salt River Meridian

Sec North.

between sections 9 ^{and} 10
var. 14° East

40.00 Set a $\frac{1}{4}$ section corner post in a mound and pits as per instructions.
No trees near.

80.00 Set a post in a mound and pits as per instructions for the corner to sections
3, 4, 9 ^{and} 10.

No trees near.

Land - rolling.

Soil - 2nd rate.

No timber.

Township 16 North, Range 1 West
Gda^{and} Salt River Meridian

As East.

on random line between sections 3rd 10
var. 124° East

40.00 Set a temporary 1/4 section corner post.

80.10 Intersect the N. & S. Line at the
corner to sections 2, 3, 10, & 11. from
which corner run

West.

on true line between sections 3rd 10.
var. 124° East

40.05 Set a 1/4 section corner post in a
mound and pts as per instructions

No trees near.

80.10 The corner to sections

3, 4, 9 & 10.

Land - rolling.

Soil - 3rd rate.

No timber.

Township 16 North, Range 1 West
 T₁₄S. Salt River Meridian

S. North.

on true line between sections 3^{1/2} & 4.
 var. 14° East

40.00 Set a 1st section corner post in a
 mound and file as per instructions
 No trees near.

80.20 Intersect the 4th Standard Parallel
 North, at the standard corner
 to sections 33^{1/2} & 34, and marked
 the same for the closing corner
 to sections 3^{1/2} & 4, as per instruction.

Land - rolling & broken -
 Soil - 3rd rate.
 No timber.

Sub. Dec. 13th 1871

Township 16 North, Range 1 West
 Tada & Salt River Meridian
 1st North.

between sections 32 & 33.

var. 14° East

40.00 Set a ~~corner~~ 1/4 section corner
 post in a mound and pits as per
 instructions.

No trees near.

80.00 Set a post in a mound and pits
 as per instructions for the corner
 to sections

28, 29, 32 & 33.

No trees near

Land - gently rolling

Orch - 1st rate.

No timber.

Township 16 North, Range 1 West.

6thth Salt River Meridian

R. East.

on random line between sections 28th & 33th
var. 14° East

40.00 Set a temporary 1/4 section corner post.

80.00 Intersect the N. & S. Line at the
corner to sections 27, 28, 33 & 34
from which corner I run -
West.

on true line between sections 28th & 33th
var. 14° East

40.00 Set a 1/4 section corner post in
a mound of pits as per instructions

No trees near.

80.00 the corner to sections

28, 29, 32 & 33.

Land - gently rolling prairie.

Soil - 1st rate.

No timber.

Township 16 North. Range 1 West

Sida and Salt River Meridian

No North.

between sections 28th & 29th
var. 14° East

40.00 Set a 1/4 section corner post in a mound and pile as per instructions
No trees near.

80.00 Set a post in a mound and pile as per instructions for the corner to sections

20, 21, 28th & 29th.

No trees near.

Land gently rolling.

Good - 1st rate

No timber.

Township 16 North. Range 1 West.
 6th to Salt River Meridian

S. East.

on random line between sections 21^{1/2} & 28.

var. 14° East

40.00 Set a temporary 1/4 section corner post.

80.10 Intersect the N. & S. Line 7 miles
 south from the corner to sections
 21, 22, 27 & 28. from which corner I rem-
S. 89° 57' N.

on true line between sections 21^{1/2} & 28

var. 14° East

40.05 Set a 1/4 section corner post on a
 mound and pits as per instructions

No trees near.

80.10 the corner to sections

20, 21, 28 & 29.

Land - rolling prairie.

Soil - 1st rate.

No timber.

Township 16 North. Range 1 West

Gda ^{and} Salt River Meridian

Sec 14 North.

between sections 20 ^{and} 21.

var. 14° East

40.00 Set a 1/4 section corner post in a mound and pits as per instructions
No trees near.

50.00 Set a post in a mound and pits as per instructions for the corner to sections 16, 17, 20 ^{and} 21.
No trees near.

Land - rolling prairie.

Soil - 1st rate.

No timber.

37

Township 16 North, Range West
 6th and Salt River Meridian
 No East.

on random line between sections 16 & 21.

var. 14° East

40.00 Set a temporary $\frac{1}{4}$ section corner post.

80.22 Intersect the N. & S. Line at the
 corner to sections 15, 16, 21 & 22

from which corner Run -

West.

on true line between sections 16 & 21

var. 14° East

40.11 Set a $\frac{1}{4}$ section corner post in a
 mound and file as per instructions

No trees near.

80.22 the corner to sections

16, 17, 20 & 21.

Land - gently rolling.

Soil - 1st rate.

No timber.

Township 16 North Range 1 West
 5th and Salt River Meridian

No 14 North

between sections 16 & 17.
 var. 14° East

40.00 Set a ^{1/2} section corner post in
 a mound and pits as per instructions
 No trees near.

80.00 Set a post in a mound and pits
 as per instructions for the corner
 to sections.

S. 9. 16. ²/₁₀ 17.

No trees near.

Land - gently rolling.

Soil - 1st rate.

No timber.

Township 16 North, Range 1 West
 6thth Salt River Meridian
 1st East.

on random line between sections 9th & 16.

Var. 14° East

40.00 Set a temporary $\frac{1}{4}$ section corner post.

80.00 Intersect the N. and S. Line 8 links
 south from the corner to sections
 9, 10, 15th & 16. from which corner
 true -

S. 89° 57' N.

on true line between sections 9th & 16.

"

Var. 14° East

40.00 Set a $\frac{1}{4}$ section corner post.
 in a mound and bids as per instructions

No trees near.

80.00 The corner to sections
 8, 9, 16th & 17.

Land - undulating.

Price - 1st rate.

No timber

Township 16 North. Range 1 West
 6th & 7th Salt River Meridian
 1/4 North.

between sections 8th & 9.
 var. 1st^o Each

- 20.00 A round knoll bears east about
 40 chains distant.
- 40.00 Set a 1/4 section corner post in
 a mound and pits as per instructions
 No trees near.
- 80.00 Set a post in a mound and
 pits as per instructions for the
 corner to sections
 4. 5. 8th & 9.
 No trees near.

Land - rolling.

Coal - 1st rate.

No timber.

Township 16 North, Range 1 West
 6th and Salt River Meridian

No. East.

on random line between sections 4th & 9.
 var. 14° East

40.00 Set a temporary ^{1/4} section corner post.

80.12 Intersect the N. ^{1/4} S. Line 1st line
 south from the corner to sections
 3, 4, 9 th & 10. from which corner I run -
S. 89° 54' W.

on true line between sections 4th & 9.
 var. 14° East.

40.06 Set a ^{1/4} section corner post on
 a mound and pits as per instructions
 No trees near.

80.12 The corner to sections
 4, 5, 8 th & 9.

Land selling.

Spil 2nd rate.

No timber.

Township 16 North, Range 1 West

Gila ^{and} Salt River Meridian

No 1 North

on a true line between sections 4th & 5th.

Var. 14° East

35.00 Land becomes ascending.

40.00 Set a ^{1/4} section corner stone 16
x 10 x 8 inches as per instructions
No trees near.

80.25 Intersect the 24th Standard Par-
allel line at the Standard corner
to sections 32nd & 33rd, and marked
the same for the closing corner
to sections 4th & 5th, as per instruction.

Land - 1st half mile rolling,
then broken.

Soil - 2nd & 3rd rate.

No timber

Dec. 14th 1871

Township 16 North, Range 1 West
 5thth Salt River Meridian

16th North.

between sections 31st & 32nd

Var. 124° East

13.00 Road, bears N. N., and enter field

40.00 Set a 4th section corner post in a mound and sets as per instructions
 No trees near.

66.00 Road, bears S. N. ^{1/4} N. E.

80.00 Set a post in a mound and sets as per instructions for the corner to sections

29, 30, 31st & 32nd.

No trees near.

Land - lease.

Oris - 1st rate.

No timber.

Township 16 North, Range 1 West
 5thth Salt River Meridian

East.

on a random line between sections 29 & 32.

Var. 1stth East

21.00 Leave cornfield bears N. $\frac{1}{4}$ S.

21.50 Road bears N. $\frac{1}{4}$ S.

40.00 Set temporary $\frac{1}{4}$ section corner post.

80.08 Intersect the N. $\frac{1}{4}$ S. Line at the corner
 to sections 28, 29, 32 & 33. from
 which corner run -

West.

on true line between sections 29 & 32.

Var. 1stth East

40.024 Set a $\frac{1}{4}$ section corner post in
 a mound and sets as per instructions

No trees near.

80.08 the corner to sections.

29, 30, 31 & 32.

Land loc. Doc. 1st rates.

No timber.

Township 16 North. Range 1 West.
 Tada $\frac{3}{4}$ Salt River Meridian
1/2 West

on random line between sections 30 & 31.
 var. 12° East

- 16.00 Grande Creek 50 links wide - runs North.
 30.00 Leave Cornfield bears N. $\frac{3}{4}$ S.
 40.00 Set a temporary $\frac{1}{4}$ section corner East.
 72.50 Road bears N. N. $\frac{3}{4}$ S. E.
 78.55 Intersect the West boundary line
 at the corner to sections 30.31
 25 $\frac{3}{4}$ 36. from which corner I run -
East.

on true line between sections 30 & 31
 var. 12° East

- 38.55 Set a $\frac{1}{4}$ section corner stone, 14. x 10 x 8 in. on
 a mound and set as per instructions
 No trees near
 78.55 The corner to sections 29.30.31 & 32.

Land level. Soil 1st rate.
 No timber

Township 16 North Range 1 West
 G. & S. Salt River Meridian

North

between sections 29. 30.

var. 14° East

40.00 Set a $\frac{1}{4}$ section corner stone 12 x 10
 x 10 inches and marked as per in-
 structions.

No trees near.

67.00 House 3 chains east of line.

80.00 Set a post in a mound and felt
 as per instructions for the corner
 to sections 19. 20. 29 & 30.

No trees near.

Land level ^{was} cultivated

Seed - 1st rate.

No timber.

Township 16 North Range 1 West
 6th Salt River Meridian

No

East.

on random line between sections 20th & 29,
 var. 124° East.

21.00 Leave Cornfield, bears N. E. ^{1/4} S. W.

22.00 Road bears N. ^{1/4} S.

36.00 Leave Cornfield bears N. ^{1/4} S.

40.00 Set temporary ^{1/4} section corner post.

80.10 Intersect the N. ^{1/4} S. Line 13 links
 South from the corner to sections
 20. 21. 28th & 29. from which corner, run
 S. 89° 32' W.

on true line between sections 20th & 29,
 var. 124° East

40.05 Set a ^{1/4} section corner post in a
 mound and pits as per in-
 structions. No trees near.

80.10 The corner to sections

19. 20. 29th & 30.
 Land lead. Post 1st rate
 No timber.

Township 16 North, Range 1 West
 Gila & Salt River Meridian

West.

on random line between sections 19³⁰ & 30
 var. 14° East

12.00 Granite Creek 50 links wide, runs N.

35.00 Leave crossfield bears N. & S.

40.00 Set temporary $\frac{1}{4}$ section corner post.

78.40 Intersect the West. boundary line 8
 links south from the corner to sections
 19. 30, 24³⁰ & 25, from which corner line
S. 89° 57' East.

on true line between sections 19³⁰ & 30.
 var. 14° East

38.40 Set a $\frac{1}{4}$ section corner post in a
 mound and pits as per instructions
 No trees near.

78.40 of
 the corner to sections
 19.20.29³⁰ & 30.

Land - lease.

Oil - 1 $\frac{1}{4}$ rate.

No timber.

Township 16 North, Range 1 West -
 6thth Salt River Meridian
 1st North.

between sections 19th & 20
 1/4th East

- 19.00 House lines East 5 chains distant.
 35.00 Granite Creek 50 links wide, runs N. E.
 40.00 Set a 1/4 section corner stone 12
 x 10 x 8 inches and marked as per
 instructions. No trees near.
 50.25 Granite Creek 50 links wide runs N. W.
 53.50 Road runs E. 1/4 N.
 54.00 Two Houses 10 chains west of line.
 69.00 Granite creek 50 links wide runs N. E.
 80.00 Set a post in a mound and feet
 as per instructions for the corner
 to sections 17, 18, 19 & 20.
 No trees near.

Land lead.

Coil 1st rate.

No timber.

Township 16 North, Range 1 West
Tide & Salt River Meridian

East.

on a random line between sections 17th & 20
var. 14° East

10.00 Granite Creek, 50 links wide runs North

34.00 Leave field, bears N. ^{and} S.

34.50 Road runs N. ^{and} S.

40.00 Set a temporary $\frac{1}{4}$ section corner post.

80.06 Intersect the N. ^{and} S. Line 9 links
south from the corner to sections
16, 17, 20 & 21, from which corner run —
S. 89° 56' W.

on true line between sections 17th & 20.

var. 14° East

40.03 Set a $\frac{1}{4}$ section corner post in a
mound and sets as per instructions

No trees near.

80.06 The corner to sections 17, 18, 19 & 20.

Sand - lead.

Soil 1st rate No Corners

Dec. 15th 1871

Township 16 North, Range 1 West.

T. 16 N. Salt River Meridian

No.

West.on random line between sections 18th & 19.

var. 124° East

18.00 Leave cornfield, bears N. E. $\frac{3}{4}$ S. 7.40.00 Set temporary $\frac{1}{4}$ section corner post.

78.50 Intersect the West boundary line 13

links south from the corner to sections

18, 19, 13th & 24th, from which corner I run -
S. 89° 54' E.on true line between sections 18th & 19

var. 124° East

38.50 Set a $\frac{1}{4}$ section corner post in a
mound and pile as per instructions

No trees near.

78.50 The corner to sections

17, 18, 19th & 20.

Land - bush.

Soil 1st rate.

No timber.

Township 16 North. Range 1 West

6th & Salt River Meridian

1st North.

between sections 17th & 18.

var. 14° East

20.00 Lead cornfield, bears N. E. $\frac{1}{2}$ S. W.

40.00 Set a $\frac{1}{4}$ section corner post in a
ground and pits as per instructions
No trees near.

80.00 Set a post in a ground and pits
as per instructions for the corner
to sections 7, 8, 17th & 18

No trees near.

Lead lead.

Coil ^{1st} rate.

No timber.

Township 16 North, Range 1 West
Gila and Salt River Meridian

East.

on random line between sections 8th 17th
var. 14° East

- 7.00 Enter cornfield bears N. E. $\frac{3}{4}$ S. W.
39.00 Leave cornfield bears Nth S.
40.00 Set temporary $\frac{1}{4}$ section corner post
a stone 3 chains N. of line
42.50 Road runs N. $\frac{3}{4}$ S.
80.10 Subvert. the N. $\frac{3}{4}$ S. Line at the
corner to sections, 8, 9, 16th 17th
from which corner I run -
West.

on true line between sections 8th 17th
var. 14° East

- 40.05 Set a $\frac{1}{4}$ section corner post in ground and
pile as per instructions. No trees near.
80.10 the corner to sections

7. 8. 17th 18.

Land - back - Doib 1st rate
No timber.

Township 16 North, Range 1 West

Eda & Salt River Meridian

To West.

on random line between sections 7 & 18.

var. 14° East

40.00 Set temporary $\frac{1}{4}$ section corner post.
Land becomes rolling.

78.38 Intersect the West boundary line 15
links south from the corner to section
7, 18, 12 & 13, from which corner draw
S. $89^{\circ}54'$ E.

on true line between sections 7 & 18

var. 14° East

38.38 Set a $\frac{1}{4}$ section corner post in a
mound and pits as per instructions
The trees near.

78.38 The corner to sections
7, 8, 17 & 18.

Land, West half mile rolling
undulating on east end.

Coib - 1st & 2^d rate.

The timber

Township 16 North, Range 1 West
 5th Salt River Meridian
 No. North.

between sections of ^{no} 8
 var. 14° East

40.00 Set a $1/4$ section corner post in
 mound and pits as per in-
 structions. No trees near.

80.00 Set a post in a mound and
 pits as per instructions for the
 corner to sections

5. 6. of ^{no} 8.

No trees near.

Land - lease.

Soil - 1st rate.

No timber.

Township 16 North Range 1 West
 T16N R1W Salt River Meridian

East.

on a random line between sections 5th & 8th
 var. 14° East

- 19.00 Enter cornfield, bears N. & S.
 37.50 Grande creek, 50 links wide, runs N.E.
 and leave field
 40.00 Set a temporary 1/4 section corner post.
 80.08 Intersect the N. & S. Line at the corner to
 sections 4, 5, 8 & 9, from which corner, run
West

on true line between sections 5th & 8th
 var. 14° East

- 40.04 Set a 1/4 section corner post in a
 mound and f.d. as per instructions
 No trees near.
 80.08 The corner to sections 5, 6, 7 & 8.

Land level, Soil 1st rate,
 No Currier

Township 16 North, Range 1 West.
 Tada ^{no} Salt River Meridian
 to West.

on random line between sections 6^{no} & 7.
 var. 124° East

40.00 Set a temporary 1/4 section corner post
 78.20 Subsequent the N. Boundary line
 11 links south from the corner to
 sections 6, 7, 1^{no} & 12, from which
 corner I run -
S. 89° 35' E.

on true line between sections 6^{no} & 7.
 var. 124° East.

38.20 Set a 1/4 section corner post in
 a mound and pits as per instructions
 No trees near.

78.20 the corner to sections 5, 6, 7^{no} & 8.

Land - rolling.

Soil - 2^o water.

No timber.

Township 16 North. Range 1 West
 Tada ^{and} Salt River Meridian

H. H. Hootch.

on true line between sections 5th & 6.
 var. 14th East

40.00 Set a 1/4 section corner post in a
 mound and set as per instructions
 No trees near.

51.00 Granite Creek 5 links wide runs N. W.
 and makes into a rocky cañon, about 1/2 chain wide.

55.00 Accord bluff. bears N. W. & S. E.

80.30 Subjoin the 14th Standard parallel
 line at the Standard corner to sections
 31st & 32. and marked the same for the
 closing corner to sections 5th & 6,
 as per instructions.

Land - lead 1st half mile.

then broken and rocky.

Soil - 1st ^{and} 3rd rate. No timber.

Date Dec. 16th 1871

General Description

The lands in this Township are all of the best quality of grazing lands and a large portion of them are ^{well} adapted for agricultural purposes.

The surface is mostly a little rolling and nearly level.

The soil is a rich sandy alluvial deposit and with a good supply of water any part of the lands would produce well, all the products of a farm common to this climate.

There is no timber.

S. H. Foreman
Dep. Surveyor.

Surveyor General's Office
Tucson A.T. March 20th 1872

The foregoing field notes of the survey of the Subdivision lines of Township 16 N. Range 1 West of the Gila and Salt River Base and Meridian lines in the Territory of Arizona executed by S. W. Foreman U. S. Dep. Surveyor, under his contract dated October 14th 1871, having been critically examined, the necessary corrections and explanations made the said field notes and the surveys they describe are hereby approved.

John Wasson
Surveyor General.

List of Names.

A List of the Names of the individuals employed to assist in running, measuring, or marking the lines and corners described in the foregoing Field Notes of the Subdivision lines of Township 16 N. Range 1 W.

61st & Salt River Meridian
and Base lines

showing the respective capacities in which they acted.

| | |
|---------------|-------------|
| Geo. Edlewood | Compassman. |
| Joseph Krauss | Chainman. |
| Fred Snider | Arman. |
| James Baker | Alapsee |



Final Oaths of Assistants.

We hereby certify that we assisted Salomon W.
 Gorham Deputy Surveyor, in surveying
 the Subdivision line, of Townships
 16 N. R. 1 W. Gila and Salt
 River Base and Meridian
 lines

and that said Survey has been in all respects, to the
 best of our knowledge and belief, well and faithfully sur-
 veyed, and the boundary monuments planted according to
 the instructions furnished by the Surveyor-General.

George Ellwood
 Fred Sanders
 Joseph Heuvel
 James Baker

Subscribed and Sworn to before
 me this 21 day of February 1872
 J. A. Anderson
 Probate Judge
 Pinal

Final Oath of Deputy Surveyor.

I, *Solomon W. Foxman*
Deputy Surveyor, do solemnly swear that, in pursuance
with a contract with *John Wesson*
United States Surveyor-General for Arizona, bearing date
the 14th day of *October* 1871, I have well, faithfully
and truly, in my own proper person, and in strict con-
formity with the instructions furnished by the Surveyor-
General, the Surveying Manual, and the laws of the
United States, surveyed all those parts or portions of the
Subdivision lines of Township
16 N. R. 17. E. 1st and Salt
River Base and Meridian
lines.



as are represented in the foregoing *Field Notes* as having

been surveyed under my directions; and I do further solemnly swear that all the corners of said surveys have been established and perpetuated in strict accordance with the Surveying Manual and printed instructions, and that the foregoing are the true and original Field Notes of such Survey.

Solomon W. Harrison
U. S. Deputy Surveyor.

Subscribed and sworn to before me, this 21st
day of February 1872

Geo. Hudson
Probate Judge
Omaha

