

"C"  
111

SUBDIVISIONS  
of

T. 29, N., R. 2, W.

by

Carl R. Gaudle.

BOOK 1130

4-671

FIELD NOTES

GENERAL LAND OFFICE.

BOOK 1130

No. 1130

1130

No. 1130

BOOK 1130

Field Notes  
of the survey of the  
Subdivisional Lines  
of  
T. 29 N., R. 2. W.  
of the  
Gila and Salt River  
Base and Meridian.  
Territory of Arizona,  
as surveyed by  
Carl R. Candler,  
U. S. Dep. Surv.  
under his  
Contract No. 70, Ariz.  
dated June 13<sup>th</sup> 1900.

Survey commenced Sept. 21<sup>st</sup> 1900.  
Survey completed Oct. 4<sup>th</sup> 1900.

(4-674.)

Township 29N. R. 2W.  
BOOK 1130  
BOOK 1131

6	110	5	84	4	68	3	60	2	30	1
108		107		83		67		46		28
7	105	8	81	9	65	10	44	11	26	12
103		101		80		64		43		23
18	100	17	78	16	62	15	41	14	19	13
98		96		77		61		39		17
19	95	20	76	21	59	22	38	23	14	24
94		92		74		58		36		12
30	91	29	73	28	56	27	35	26	10	25
89		88		72		55		33		8
31	86	32	70	33	53	34	32	35	6	36

For Preliminary Oaths  
see Book "B"

## Subdivision of T. 29 N. R. 2 W.

Survey commenced Sept. 20 1900  
and executed with a W. & L. G.  
Guraly, light mountain solar  
transit (not numbered) with solar  
attachment and Jones Patent  
Lat. arc

For complete description and test  
of instrument see Book B.  
Vol. I. of this series.

In order to test the adjustment of  
my solar I proceed as follows:  
At the standard cor. of Tps. 29 N.  
R. 2 E of 2 W., Latitude  $35^{\circ} 49' 23''$   
~~35° 49' 23"~~  
Longitude  $112^{\circ} 25' 24.3''$   
~~112° 25' 50"~~, I set off  
 $1^{\circ} 01' N.$  on the decl. arc,  $35^{\circ} 49' N.$   
on the lat. arc, and at 4<sup>h</sup> 30<sup>m</sup>  
p. m., lmt., determine a true  
meridian with the solar, which  
coincides with the meridian

## Subdivision of T. 29 N. R. 2 W.

established from Polaris obs.  
Aug. 22, 1900.

Sept. 20, 1900.

Sept. 21: at 8<sup>h</sup> 02<sup>m</sup> a. m., last, I  
set off  $0^{\circ} 45\frac{1}{2}'$  N. on the decl. arc;  
 $35^{\circ} 49'$  on the lat. arc; and determine  
a true meridian with the solar,  
which coincides with the Polaris  
meridian; therefore I conclude  
the adjustments of my instrument  
are satisfactory.

The magnetic bearing of the true  
meridian at 8<sup>h</sup> 10<sup>m</sup> a. m. is  
N.  $140^{\circ} 41'$  W.; the angle thus determined  
reduced by the table page 100 of the  
Manual gives the mean mag. decl.  $14^{\circ} 38'$  E.  
From the S.E. cor. of the T., already  
described, I run

## Subdivision of T. 29 N. R. 2 W.

West on the 7<sup>th</sup> Standard Parallel  
 N. and S. bdy. of sec. 36, and at  
 40.05 chs. intersect the  $\frac{1}{4}$  sec. cor.  
 and at 80.12 chs. intersect the stand-  
 ard cor. of secs. 35 & 36; therefore  
 the line bears west, and is as  
 stated in the field notes furnished  
 by the Surveyor General.  
 It begins at the the standard cor.  
 of secs. 35 & 36, which is a  
 limestone 12 x 6 x 1/2 in., above  
 ground firmly set marked and  
 witnessed as described by  
 the surveyor general.

The west line

N. 0° 01' W.

bet. secs. 35 & 36.

Over Rolling land covered  
 with dense chico undergrowth

## Subdivision of T. 29 N. R. 2 W.

- 16.00 Enter scattering scrubby cedar, timber, bears E. W. and descend over mountainous land, bears N. W. & S. E.
- 40.00 Set a limestone  $20 \times 10 \times 6$  ins., 15 ins. in the ground for  $\frac{1}{4}$  sec. cor. marked  $\frac{1}{4}$  on W + 36 on E. face; and raise a mound of stone 2 ft. base,  $1\frac{1}{2}$  ft. high W. of cor. Pit is impracticable. No trees within limits suitable for bearing trees.
- 51.00 Ravine at foot descent of 45 ft. course N. 75° E. Ascend.
- 56.00 Ridge 60 ft. high, bears E. W. & descend.
- 77.50 Ravine 100 ft. deep course N. E.
- 80.00 Point for cor. falls on a limestone  $24 \times 4 \times 4$  ins. above ground, in place. Cut a cross (+) at exact point for cor. of secs. 25, 26, 35 & 36, marked with 1 groove on S. & E. sides of cross;



BOOK 1180  
 Subdivision of T. 29 N. R. 2 W.

- and raise a mound of stone  
 2 ft. base,  $1\frac{1}{2}$  ft. high W. of cor.  
 Pits impracticable.
- Land, Rolling & Mountain-  
 ous 66,000 chs.
- Soil, stony, 1/4 th rate.  
 Timber, scattering scrubby  
 cedar.
- Land, covered with dense under-  
 growth, 8000 chs.

East

on a random line bet. secs. 25 & 36.

40,000 Set temp. 1/4 sec. cor.

88.22 Intersect E. bdy. of Twp. 4 lbs. S.  
 of the cor. of secs. 25, 30, 31, & 36  
 which I established Aug. 23.  
 Thence down  
 S.  $89^{\circ} 58' W.$

Subdivision of T. 29 N. R. 2 W

- on a true line bet. sec. 25 & 36.  
 Over Mountains faced, covered  
 with dense buck brush, & scat-  
 tering cedar timber, descend  
 from cor. bears N.W. & S.E.
- 6.00 Limestone ledge 40ft. high bears  
 N.W. & S.E.
- 16.00 Cataract Canyon, 2, chs. wide, 400ft.  
 deep, course N. 60° W. Ascend.
- 36.00 Top ascent of 600ft. bears N.W. & S.E.  
 ascend gradually.
- 40.11 Set a limestone 18 x 7 x 5 ins., 12 ins.  
 in the ground for  $\frac{1}{4}$  sec. cor., marked  
 $\frac{1}{4}$  on N. & 36 on S. face; and raise  
 a mound of stone 2 ft. base, 1  $\frac{1}{2}$  ft.  
 high N. of cor. Pits unpracticable.
- 58.50 Ridge 75 ft. above  $\frac{1}{4}$  cor., bears N. & S.
- 67.00 Ravine 75 ft. deep, course N.E.
- 71.00 Same Ravine, course S.E.

## Subdivision of T. 29 N. R. 2 W.

74.00 Sault Ravine, course N.E.

80.22 The cor. of secs. 25, 26, 35 &amp; 36.

Land, mountainous.

Soil, stony, 4th Rolo.

Timber, scattering scrubby cedar.

Mountainous land covered

with dense undergrowth 80.22 chs.

Sept. 21: at this cor. I set off

 $10^{\circ}40\frac{1}{2}'$  N. on the decl. arc, and at

11 h 53 m a.m., l. m. t., observe the

sun on the meridian; the resulting

lat. is  $35^{\circ}49'50''$  which is correct.N.  $0^{\circ}01'$  W.

bet. secs. 25 &amp; 26.

Over, mountainous land

covered with dense buck brush

and scattering cedar timber.

3.75 Ravine 30 ft. deep, course S.E.

Ascend through heavy cedar  
timber.

19.00 Ridge 100ft. high bears E. N. W.

40.00 Set a limestone 18x8x4 ins., 12  
ins. in the ground for 4 sec. con.  
marked  $\frac{1}{4}$  on W. & 25 on E. face;  
from which

A Cedar 16 ins. diam., bears N. 42° 32' E, 37 W.  
dist., marked  $\frac{1}{4}$  S. 25 B.T.

A Cedar 14 ins. diam., bears N. 62° 37' W, 22 W.  
dist., marked  $\frac{1}{4}$  S. 26 B.T.

60.00 Ravine 100ft. below Ridge, course N. W.

66.00 Leave heavy cedar timber bears  
N. W. & S. E.

80.00 Set a limestone 18x9x6 ins., 12  
ins. in the ground, for con. of sec.  
23, 24, 25, & 26, marked with 2 notches  
on S. & 1 notch on E. edges; and place  
a mound of stone 2 ft. base,  $\frac{1}{2}$  ft.

## Subdivision of T. 29 N. R. 2 W.

high w. of cor. Pit. in *practically*  
 Land, Mountainous.  
 Soil, stony, 4 to 6 ft.  
 Timber, cedar.

Mountainous land covered  
 with heavy timber or dense  
 undergrowth 5000 chs.

N. 89° 55' E.

on a random line bet. secs. 24 & 25.

4000 Set temp. 14 sec. cor.

80.18 Intersect E. ldy. of T. 25 lha. S. of  
 the cor. of secs. 9, 24, 25 & 30.  
 which I established Aug. 23.

Temp. from

S. 89° 47' W.

on a true line bet. secs. 24 & 25

Over Mountainous land covered  
 with dense buck brush.

## Subdivision of T. 29 N. R. 2 W.

- 5.00 Enter scattering scrubby cedars.
- 20.00 Descend, bears N.W. & S.E.
- 24.00 Limestone wall, 30 ft. high.
- 37.00 Cataract Canyon 60 ft. deep, course  
now ascend.
- 40.09 Point for cor. falls on a limestone  
4 x 3 x 2 ft. above ground, airplace.  
Cut a cross (+) at exact point  
for  $\frac{1}{4}$  sec. cor.; marked with  $\frac{1}{4}$   
on N. & 2.5 on S. side of cross; and  
raise a mound of stone 2 ft. long,  
 $1\frac{1}{2}$  ft. high, N. of cor. Pits impracticable.
- 74.00 Top ascent of 700 ft., bears N.W. & S.
- 77.00 Descend, bears N. & S.
- 80.18 The cor. of sec. 23, 24, 25, & 26.  
Land, mountainous.  
Soil, stony, 4th Rate.  
Timber scattering cedar.  
Mountainous land covered

## Subdivision of T. 29 N. R. 2 W.

with dense undergrowth 80.18 chs.

Sept. 21, 1900.

Sept. 22; at 8<sup>h</sup> a.m., but, I  
set off  $0^{\circ} 2\frac{1}{2}'$  N. on the decl.  
arc;  $35^{\circ} 50' 40''$  on the lat. arc  
and determine a true mer-  
idian with the solar at the  
last named cor.

Thence I run

N.  $0^{\circ} 51' W.$

bet. sec. 23 & 24.

Over Mountainous land covered  
with dense buck & chis brush.

- 15.00 Ravine 100ft. deep, course N. E.  
29.00 Ridge 100ft. high, bears E. & W.  
34.50 Second, bears E. & W. to N. 30 W.  
4000 Set a limestone  $15 \times 7 \times 6$  ins., 10  
ins. in the ground for  $\frac{1}{4}$  sec. cor.

## Subdivision of T. 29 N. R. 2 W.

marked  $\frac{1}{4}$  on W. & 24. on E. face;  
and raise a mound of stone 2 ft. base;  
 $1\frac{1}{2}$  ft. high W. of cor. Pits impracticable.

66.00 Brink of Cataract Canyon, bears  
N.  $20^{\circ}$  W. +  $820^{\circ}$  E. The Canyon  
at this point is about 1000 ft. deep  
with perpendicular walls on  
each side.

To determine the dist. across, I set  
a flag on N. side of canyon on  
line, and flag this point, as  
nature of ground prevents obtain-  
a suitable base; then from  
the flag on N. side of canyon  
measure a base S.  $89^{\circ}59'$  W.

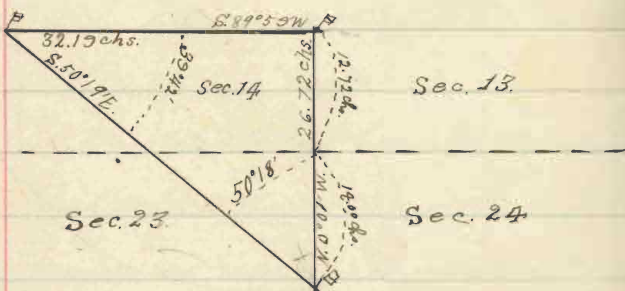
32.19 chs., to a point from which  
the flag bears S.  $50^{\circ}19'$  E.; there-  
fore the dist. to flag is

$$\text{Cos Tang. } 50^{\circ}18' \times \text{Base } \approx$$



## Subdivision of T. 29 N. R. 2 W.

$$.83022 \times 32.19 = 26.72 \text{ chs.}$$



$$\text{also } 66.00 \text{ chs.} + 26.72 \text{ chs.} = 92.72 \text{ chs.}$$

or 12.72 chs. N. of

80.00 The point for cor. of secs.  
13, 14, 23 & 24 falls in Canyon  
Lauf, Mountainous.

Soil, stony, 4th Rate,

Timber, scattering cedar

Mountainous lauf covered  
with dense undergrowth 500 chs.

To determine the dist. across  
the canyon I got a point  
on the rim 900 chs. N. of the

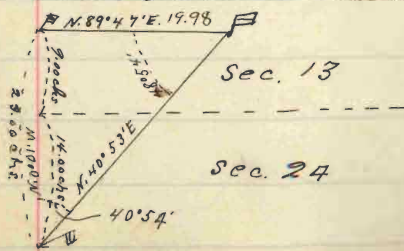
Subdivision of T. 29 N. R. 2 W.

point for cor. of secs 13, 14, 23  
 & 24, and set a flag  
 N. 89° 47' E.

on E. Rim of canyon.  
 Then go to the flag set at  
 66.00 chs. on the line bet. sec. 23  
 & 24, from which the flag  
 on E. Rim bears N. 40° 53' E. <sup>E. of</sup>  
 from the flag, S. end of base bears  
 S. 40° 53' W.; therefore the angles  
 taken in the order of measure-  
 ment are - 90° 12', 40° 54' <sup>E</sup> / 48° 54'  
 and their sum being 180° I com-  
 pute the dist. across as follows:

$$\frac{\text{Sin. } 40^{\circ} 54'}{\text{Sin. } 48^{\circ} 54'} \times \text{Base or } \frac{.65474 \times 2300}{.75356} =$$

19.98 chs.



W.C. 11/19

## Subdivision of T. 29 N. R. 2 W.

- Then offset South 9.00 chs. to the  
 random line bet. secs. 13 & 24,  
 Thence  $N 89^{\circ} 47' E$   
 20.02 Set temp.  $\frac{1}{4}$  sec. cor.  
 40.00  
 60.16  
 80.14 Intersect E. edg. of Tp. 14 lks. N.  
 of the cor. of secs. 13, 18, 19, & 24,  
 which I established Aug. 24.  
 Thence I run  
 $S. 89^{\circ} 53' W.$   
 on a true line bet. secs. 13 & 24  
 Over mountainous land  
 covered with dense buck brush.  
 10.00 Descend, bears N. 75.  
 32.20 Ravine 75 ft. deep, course S.W.  
 40.07 Set a limestone  $18 \times 12 \times 5$  ins., 12  
 ins. in the ground for  $\frac{1}{4}$  sec. cor.,  
 marked  $\frac{1}{4}$  on N. & 24 on S. face,  
 and raise a mound of stone 2 ft.  
 base,  $1\frac{1}{2}$  ft. high, N. of cor. Sets  
 impracticable

## Subdivision of T. 29 N. R. 2 W.

- 61.25 Brink of canyon 1000ft. above  
the bottom, bears N. 7 SE.
- 80.14 The point for cor. of secs. 13, 14,  
23 & 24.

Land, Mountainous.

Soil, stony, 4<sup>th</sup> Rate.

Timber, a few scattering cedars.

Mountainous land covered  
with dense buck brush 80.14 chs.

N. 0° 01' W.

bet. secs. 13 & 14.

Over Mountainous, land  
covered with buck & chis brush.

- 7.00 Rim of canyon bears N.E. 4 S 20° W.  
about 500ft. above point for cor.  
Set a limestone 16 x 8 x 5 ins., 10  
ins. in the ground for witness  
cor. to cor. of secs. 13, 14, 23, & 24.

## Subdivision of I. 29 N. R. 2 W.

marked W.C. on N.E. with  
3 notches on S. end, notch on E.  
edges; and raise a mound  
of stone 2 ft. base,  $1\frac{1}{2}$  ft. high  
W. of cor. Pits impracticable.

Sept. 22: at this cor. set off  
 $0^{\circ}17' N.$  on the decl. arc, and  
at  $11^h 52.3^m$  a.m. level, observe  
the sun on the meridian, the  
resulting lat. is  $35^{\circ}51'30''$   
which is correct.

12.75 Spur extends E. 500 ch. to Brink  
of canyon.

15.00 Brink of canyon, 1200 ft. high,  
bears  $N. 70^{\circ} W. \& E.$

I set a flag on N. side of canyon  
on line, 1 stem off feet  
West 2400 chs. Thence on off feet line  
 $N. 0^{\circ}01' W.$  25.00 chs. to a point

Subdivision of T. 29 N. R. 2 W.

- 24.00 chs. west of  
 40.00 The point for  $\frac{1}{4}$  sec. cor falls in  
 Canyon 12.00 ft. below the top  
 thence continue  
 N. 0° 01' W. 45.00 chs.  
 East 24.00 chs. to a point on  
 the line bet. sec. 13 & 14; thence  
 S. 0° 01' E. 5.75 chs. to  
 54.25 Rim of canyon, bears N. 75° E. &  
 S. 75° W. about 12.00 ft. above the bottom.  
 Point for witness cor. to  $\frac{1}{4}$  sec. cor.  
 falls on flat limestone ledge,  
 Cut a cross<sup>(+)</sup> at exact point  
 for witness cor. to  $\frac{1}{4}$  sec. cor.  
 marked W.C.  $\frac{1}{4}$  on W. side & 13  
 on E. side of cross; and raise a  
 mound of stone 2 ft. base,  $1\frac{1}{2}$  ft.  
 high W. of cor. Pit. impracticable.  
 65.00 Ridge 30 ft. above witness cor. bears & 14.

## Subdivision of T. 29 N. R. 2 W.

76.75 Point for witness cor. to cor. of  
secs. 11, 12, 13 & 14, falls on  
Rim of canyon bears N.W.  $\pm$  S.  $60^{\circ}$  E.  
Cut a cross (+) at exact point  
for witness cor. to cor. of secs.  
11, 12, 13, & 14, marked W. C. on  
N.E., with 4 grooves S. & 1 groove  
E. of cross; and raised  
mound of stone 2 ft. base,  $\frac{1}{2}$   
ft. high W. of cor. *its location*

8000 The point for cor. of secs 11, 12,  
13 & 14, falls on W. side of canyon  
600 ft. below the Rim,  
Low, mountainous,  
Soll. stony, 4<sup>th</sup> Rate.  
No timber.  
Mountains as land covered  
with dense undergrowth & poplars.

Sept. 22<sup>nd</sup>, 1900

Subdivision of T. 29 N. R. 2 W.

Sept. 24: at 8<sup>h</sup> am. hnt, I set off  $0^{\circ}24' S$ , on the decl. arc;  $35^{\circ}52'20''$  on the lat. arc; and determine a true meridian with the solar, at the witness cor. to the cor. of sec. 11, 12, 13 & 14.

Thence I run

N.  $89^{\circ}53' E$ . on offset line 3.25 chs. S. of random line bet. sec. 12 & 13.

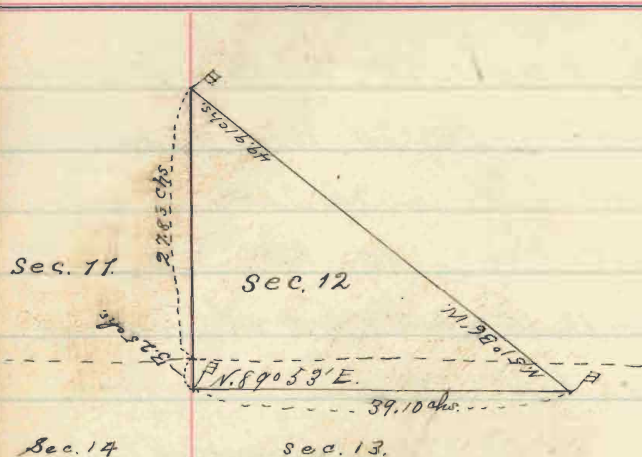
To determine the dist. across Canyon, I set a flag on E. River of Canyon, on line, and also a flag on N. River, on line N.  $0^{\circ}01' W$ . of cor. bet. sec. 11 & 12, which bears N.  $51^{\circ}36' W$ . 49.91 chs. dist. from the flag set on E. River, therefore the dist. across is

$$\frac{\sin. 51^{\circ}35'}{\sin. 89^{\circ}54'} \times \text{Base on}$$

$$\frac{.78351 \times 49.91}{1} = 39.10 \text{ Chs.}$$



## Subdivision of T. 29 N. R. 2 W.



Also dist. to flag on N. Rim is

$$\frac{\text{Sin. } 38^{\circ} 31' \times \text{Base or}}{\text{Sin. } 89^{\circ} 54'}$$

$$= \frac{.62274 \times 49.91}{1} = 31.08$$

$$\text{also } 31.08 - 3.25 = 27.83 \text{ chs. N. 0' 0'}$$

W. of point for cor. of secs. 11, 12, 13 & 14.

From the flag on E. Rim of canyon  
offset N. 3.25 chs. to a point at

39.10 on random line bet. secs. 12 & 13.  
Thence N 89° 53' E

~~40.00~~ <sup>90</sup> Set temp. 1/4 sec. cor.

~~40.08~~ <sup>90</sup> Intersect E. bdy. of T. 7 chs. S.  
of the cor. of secs. 11, 12, 13 & 14.

## Subdivision of T. 29 N. R. 2 W.

which I established Aug. 24.

Thence I run

S. 89° 50' W.

on a true line bet. sec. 12 & 13.

Over mountainous land, covered  
with dense buck & chicobush.

- 7.00 Ravine, course N.W. Enter scattering  
scrubby cedars.
- 20.00 Touch same Ravine, course from  
N.E. to N.W.
- 23.00 Ascend, bears N.W. 75.6.
- 27.00 Ridge 50 ft. high bears N.W. 75.6.
- 33.80 Second Limestone ledge 10 ft. high
- 39.00 Ravine, 50 ft. deep, course N. ascend
- 40.04 Set a limestone 18 x 10 x 6 ins., 12  
ins. in the ground for  $\frac{1}{4}$  sec. cor.  
marked  $\frac{1}{4}$  on N. & 13 on S. face, and  
raise a mound of stone 2 ft. base,  
1  $\frac{1}{2}$  ft. high, N. of cor. Pt. impracticable.

## Subdivision of T. 29 N. R. 2 W.

42.85 Brink of Cataract Canyon, bear  
N. 55° W. & S.E. to S.W. Perpendicular  
walls 600 to 500 ft. high, and the  
lower <sup>Chicominee Gorge</sup> chasm is about 100 ft. wide  
with walls 300 ft. high.

80.08 The point for cor. of secs. 11, 12,  
13 & 14, 12.0, 3.25 chs. S.

Land, Mountainous.

Soil, stony, 4<sup>th</sup> Rate.

Timber, scattering Cedars.

Mountainous land, 80.08 chs.

N. 0° 01' W.

bet. secs. 11 & 12,

Over Mountainous land,

27.83 Flag, on Rim of canyon, 1200 ft.

above the bottom, bears N.W. & S.E.

40.00 Set a limestone 18 X 12 X 5 ins, 12

ins. in the ground for 1/4 sec. cor.

## Subdivision of T. 29 N. R. 2 W.

- marked  $\frac{7}{4}$  on W. & 12 on S. face,  
and raise a mound of stone 2 ft. base  
 $1\frac{1}{2}$  ft. high W. of cor. Pit impracticable.
- 54.00 Ridge, 40 ft. above Rim of Canyon,  
bears E. & W. Sec. 2nd.
- 62.00 Canyon 200 ft. deep. Course N. W.
- 66.00 Top of N. side canyon, 200 ft. high,  
Thence over rough slope to W.
- 80.00 Set a limestone 20 x 9 x 8 ins., 15  
ins. in the ground, for cor. of  
sect. 1, 2, 11, & 12, marked with  
5 notches on S. end, 1 notch on E.  
edges; and raise a mound of  
stone 2 ft. base  $1\frac{1}{2}$  ft. high W. of cor.  
Pit impracticable.
- Land, mountainous.  
Soil, stony, & the Rato  
Timber scattering cedar.  
Mountainous land 80.00 ch.

## Subdivision of T. 29 N. R. 2 W

Sept. 24; at this corner set off  
 $0^{\circ}29\frac{1}{2}'$  S. on the decl. arc; and  
 at 11 h 52 m a.m., first observe  
 the sun on the meridian; the  
 resulting lat. is  $35^{\circ}53'20''$   
 which is about 0.1 greater than  
 the proper lat.

N.  $89^{\circ}50'E$ .

on a random line bet. sec. 1 & 12

40.00 Set temp.  $\frac{1}{4}$  sec. cor.

80.10 Intersect E. bdy. of Tp. 23 & N.  
 of the cor. of sec. 1, 6, 7, & 12,  
 which I established Aug. 25, 1900.

Then run

West

on a true line bet. sec. 1 & 12.

Over mountainous land, covered  
 with scattering cedar & dense buck brush

## Subdivision of T. 29 N. R. 2 W.

- 3.25 Low Rocky Ridge, bears N.W. & S.E.  
Thence over rocky slope to N.
- 24.00 Descend, bears N. & S.
- 27.00 Ravine, course S.W.; foot 50 ft. ascend.
- 34.50 Small drain, course S.
- 39.50 Top cent. of 100 ft. bears N.W. & S.W.
- 40.05 Set a limestone  $18 \times 9 \times 6$  ins.,  $1/2$  ins.  
in the ground for  $1/4$  sec. cor. marked  
 $1/4$  on N. & 12 on S. faces; and raise  
a mound of stone 2 ft. base,  $1/2$  ft.  
high N. of cor. Pit is impracticable.
- 46.00 Descend, bears N. & S.
- 54.60 Ravine 75 ft. deep, course S.W. Ascend
- 58.50 Ridge, bears N.W. & S.E.
- 79.00 Descend Limestone ledge 4 ft. high.
- 80.10 The cor. of secs. 1, 2, 11, & 12.  
Land, mountainous  
Soil, stony, 4<sup>th</sup> Rate  
Timber, scattering cedar.

Subdivision of T. 29 N. R. 2 W.

Mountainous land covered  
with dense undergrowth 80, 10 chs.

N. 0° 01' W.

on a random line bet. sec. 1 & 2

40.00 Set temp. & sec. cor.

79.98 Intersect N. bdy. of the T. 4 Sec. W.  
of the cor. of sec. 1, 2, 35, & 36,  
which established Sept. 1, 1905.

Thence run

S. 0° 01' W.

on a true line bet. sec. 1 & 2.

Over mountainous land covered  
with dense buck & chin bush.

100.00 Ravine, course S, N.

22.00 Spur, bears NE, Succeed.

27.00 Ravine, 15 ft. deep, course W.

39.90 Top of ascent of 200 ft. bears E. & N.

39.98 Set a limestone 15 x 9 x 5 ins., 10 ins.

Subdivision of T. 29 N. R. 2 W.

No. 1130

in the ground for  $\frac{1}{4}$  sec. cor; marked  
 $\frac{1}{4}$  on W., & 1 on E. faces; and raise a  
 mound of stone, 2 ft. base,  $\frac{1}{2}$  ft. high  
 W. of cor. Pits in practically.

49.00 Ascend, bears N.E.  $\gamma$  S.W.

71.00 Ravine 25 ft. deep course  $\gamma$  W.

79.00 Top ascent of 100 ft. bears N.E.  $\gamma$  S.W.

79.98 The cor. of secs. 1, 2, 11 & 12,

Land, mountainous,

Soil, stony, 4<sup>th</sup> Rate.

Timber, scallering cedar.

Mountainous land 79.98 hrs

Sept. 24, 1900.

Sept. 25; at the standard  
 cor. of sec. 34 & 35, which is  
 a limestone  $10 \times 8 \times 12$  ins., above  
 ground, firmly, etc, marked  
 and witnessed as described by



Subdivision of T. 29 N. R. 2 W

by the Surveyor General,  
I set off  $0^{\circ}48\frac{1}{2}'$  S. on the decl.  
arc,  $35^{\circ}49'$  on the lat. arc, and  
at  $8^{\text{h}}04^{\text{m}}$  A.M., lent, determining  
true meridian with the solar

Thereby I run

N.  $0^{\circ}01'$  W.

betw. secs. 34 & 35.

Over Rolling land, covered with  
dense chid undergrowth.

- 6.00 Ridge 50ft. above cor, bears  $N. 8^{\circ} 45' W.$
- 21.00 Drain, course, S. W.
- 31.50 Ridge 4ft. high, bears  $E. 7^{\circ} W.$
- 40.00 Set a limestone  $15 \times 10 \times 5$  ins.,  
10 ins. in the ground for  $\frac{1}{4}$  sec.,  
cor, marked  $\frac{1}{4}$  on W. & 35 on E.  
faces; dig pits  $18 \times 18 \times 12$  ins., N. & S.  
of stone, 3ft. dist.; and raise a  
mound of earth  $3\frac{1}{2}$  ft. base,  $\frac{1}{2}$  ft.

BOOK 1130

Subdivision of T. 29 N. R. 2 W.

93

- high W. of cor.
- 66.00 Drain, course S.W.
- 72.00 Low Ridge, bears N.E. & S.W.
- 80.00 Set a limestone 15 x 6 x 6 ins., 10 ins.  
in the ground for cor. of sec.  
26, 27, 34 & 35; marked with  
1 notch on S. & 2 notches on E. edge; &  
dig pits 18 x 18 x 12 ins. in each  
sec., 5 1/2 ft. dist.; and raise  
mound of earth 4 ft. base, 2 ft.  
high, W. of cor.
- Land, Rolling,  
Soil, sandy & stony, 1/4 to 1/2 Rats.  
No timber,  
Land covered with dense undergrowth
- 80.00 chs

East

on a random line bet. sec. 26 & 35

## Subdivision of T. 29 N. R. 2 W.

40.00 Set temp. 4 sec. cor.

80.06 Intersect N. 45. line at the cor.  
of secs. 25, 26, 35, & 36.

Thence I run

West

on a true line bet. sec. 26 & 35.

Over mountainous land covered  
with scattering cedar & deer  
buck brush.

40.08 Set a limestone 18 x 10 x 4 in., 2 in.  
in the ground for 4 sec. cor.

marked  $\frac{1}{4}$  on N. & 35 on S. face;  
and raise a mound of stone 2 ft. base,  
 $1\frac{1}{2}$  ft. high, N. of cor, Pits impracticable.

42.00 Second gentle W. slope

80.06 The cor. of secs 26, 27, 34 & 35

Land, mountainous, & wooded. End  
Rolling.

Timber, scattering, scrubby cedar,

Subdivision of T. 29 N. R. 2 W.

Soil, stony, 4<sup>th</sup> Rate.

Land covered with dense under-  
growth 5056 acs.

N. 0001' W.

bet. sec. 26 & 27.

Over Rolling land, covered  
with dense chics undergrowth.

40.00

Set a limestone 15 X 10 X 5 ins., 10 ins.  
in the ground for  $\frac{1}{4}$  sec. cor,  
marked  $\frac{1}{4}$  on N. & 26 on E face;  
dig pits 18 X 18 X 12 ins., N. & S. of stone  
3 ft. dist.; and raise a mound  
of earth 3  $\frac{1}{2}$  ft. base, 1  $\frac{1}{2}$  ft. high  
W. of cor.

68.00

Drain, course N.W.

73.00

Ridge bears N.W. & S.E.

80.00

Set a limestone 30 X 6 X 4 ins.,  
15 ins. in the ground (cannot set

Subdivision of T. 29 N. R. 2 W.

deeper) for cor. of secs. 22, 23, 26 &  
27, marked with 2 notches on  
S. & E. edges; dig pits 18 x 18 x 12  
ins. in each sec, 5 1/2 ft. dist.; and  
raise a mound of earth 4 ft. base,  
2 ft. high, W. of cor.

Land, Rolling,

Soil, stony, 4<sup>th</sup> Rate.

No timber,

Land, covered with dense undergrowth  
8000 sh.

Note, - It being cloudy at noon  
no lat. obs. could be taken.

East

on a random line bet. secs. 23 & 26

4000. Set temp. 14 sec. cor.

8008 Intersect N. & S. line 6 lbs. N. of  
the cor. of secs. 23, 24, 25, & 26,

## Thence from

N. 89° 57' W.

on a true line bet. sec. 2 &amp; 26.

Over Mountainous land, covered  
with dense buck brush.

- 8.00 Enter scattering cedar timber,  
bear on S. E.
- 10.40 Ravine, 30 ft. deep, course N. E.
- 16.30 Ravine, 30 ft. deep, course N.
- 27.00 Leave scattering cedar timber.
- 35.00 S. E. point of Spur, thence over  
rocky slope to S.
- 40.04 Set a limestone 20 x 1 x 9 ins., 15  
ins. in the ground for  $\frac{1}{4}$  sec. cor.,  
marked  $\frac{1}{4}$  on N. & 26 on S. face;  
and raise a mound of stone 2 ft.  
base,  $\frac{1}{2}$  ft. high, N. of cor. Pit  
impracticable.
- 45.50 Ravine 20 ft. deep, course S. E. (across)

Subdivision of T. 29 N. R. 2 W.

65.00 Ridge 100 ft. high bears N. 45.

80.08 The cor. of secs. 22, 23, 26 & 27,  
Land, Mountainous 65.00 chs.  
and Rolling,

Soil, stony & <sup>to</sup> Rate.

Timber, scattering cedar,

Mountainous land, or land  
covered with dense under-  
growth 50.08 chs.

N 0° 01' W.

bet. secs. 22 & 23,

Over Rolling land covered  
with dense chiecs undergrowth.

22.00 Ridge, bears E. 45.

40.00 Set a limestone 18 X 10 X 5 ins., 12 ins.  
in the ground for  $\frac{1}{4}$  sec. cor., marked  
 $\frac{1}{4}$  on W. & 23 on E. face; dig pits 18 X  
18 X 12 ins., N. 45. of top 3 ft. dist;

Subdivision of T. 29 N. R. 2 W.

and raise a mound of earth  $3\frac{1}{2}$  ft.  
base,  $1\frac{1}{2}$  ft. high W. of cor.

60.00 Descend gradually, bear E. cor.

72.00 Drain, 4 ft. below top, course N.E.

80.00 Set a limestone  $16 \times 10 \times 4$  ins., 11 ins.  
in the ground for cor. of sec.

14, 15, 22, 23, marked with  
3 notches on S, & 2 notches on E. edge;

and raise a mound of stone 2 ft.  
base  $1\frac{1}{2}$  ft. high W. of cor. Pit. Unpracticable.

Land, Rolling.

Soil, sandy & stony, 4<sup>th</sup> state.

No timber.

Land covered with dense under-  
growth. 80.00 chs.

S. 89057'E.

on a random line bet. sec. 14 & 23.

40.00 Set temp.  $\frac{1}{4}$  sec. cor.



## Subdivision of T. 29 N. R. 2 W.

80.02 Intersect N. & S. line 2 lks. S. of  
the point for cor. of secs. 13, 14,  
23 & 24. Witness cor. 90° cho. N.

Thence I run  
N. 89° 58' W.

on a true line bet. sec. 14 & 28.

Over Mountains and

1000 Rim of Canyon 50 ft. above  
point for cor. bears N. E & S.

3000 Ridge bears N. & S. 60 ft. above  
Rim,

4001 Set a limestone 16 X 10 X 6 ins., 11  
ins. in the ground for  $\frac{1}{2}$  sec. cor.  
marked  $\frac{1}{2}$  on N. & 23 on S. face; dig  
pits 18 X 18 X 12 ins., E. & W. of stone  
3 ft. dist.; and raise a mound of  
earth  $3\frac{1}{2}$  ft. base,  $1\frac{1}{2}$  ft. high N. of cor.

5700 Ravine, course N. E.

80.02 The cor. of secs. 14, 15, 22 & 23.

Subdivision of T. 29 N. R. 2 W.

Land, mountainous 3000 ft.  $\frac{E}{S}$   
Rolling.

Soil, stony & gravelly +  $\frac{E}{S}$  Rate.

Timber, scattering cedar,

Land covered with dense under-  
growth 5000 ft.

Sept. 25, 1900.

Sept. 26; at 8<sup>h</sup> 30<sup>m</sup> A.M., bet.,  
A set off  $1^{\circ} 12\frac{1}{2}' S.$  on the decl. arc;  
 $35^{\circ} 51' 30''$  on the lat. arc; and  
determine a true meridian  
with the solar, at con. spec. 1415, 22<sup>o</sup> 23.

Thence from

N.  $0^{\circ} 01' W.$

bet. sec. 14 & 15

Over Rolling land, covered  
with dense chis undergrowth.

10.00 Low Ridge, bears  $E. \frac{E}{S}$

## Subdivision of T. 29 N. R. 2 W.

- 19.25 Drain, course N.E.
- 31.00 Ridge, bears E. & W.
- 40.00 Set a limestone 18 x 10 x 4 ins., 12 ins. in the ground for  $\frac{1}{4}$  sec. cor. marked  $\frac{1}{2}$  on W. & 14 on E. faces; dig pits 18 x 18 x 12 ins., N. & S. of stone 3 ft. dist.; and raise a mound of earth  $2\frac{1}{2}$  ft. base,  $1\frac{1}{2}$  ft. high, W. of cor.
- 48.00 Descend, bears N.W. & S.E.
- 63.00 Foot descent of 100 ft., bears N.W. & S.E.
- 80.00 Set a limestone 18 x 8 x 4 ins., 12 ins. in the ground for cor. of sec. 10, 11, 14, & 15, marked with 4 notches on S. & 2 notches on E. edges; and raise a mound of stone 2 ft. base,  $1\frac{1}{2}$  ft. high W. of cor. Pits impracticable.

Subdivision of T. 29 N. R. 2 W.

Land Rolling  $\frac{E}{P}$  Mountainous.

Soil, stony, 4<sup>th</sup> Rate.

No timber.

Mountainous, or land covered  
with dense undergrowth 50,000 chs.

S. 89° 58' E.

on a random line bet. secs. 11 & 14.

40.00 Set temp. 4 sec. cor.

80.14 Intersect N. 75. line at the point  
for cor. of secs 11, 12, 13 & 14.

Witness cor. 325 chs. S.

Thence a run

N. 89° 58' W.

on a true line bet. sec. 11 & 14.

Over mountainous land. <sup>Clear</sup>

4.30 Run of Sangou. bears N. W. <sup>4.86</sup>

Enter dense buck brush.

30.00 Terceud. bears N. & S.

Subdivision of T. 29 N. R. 2 W.

- 33.50 Canyon 100 ft. deep, course N.
- 36.00 Top ascent of 100 ft. bears N. & S.
- 40.07 Set a limestone 18x10x9 in.  $\frac{1}{2}$  in. in the ground for  $\frac{1}{2}$  sec, con marked  $\frac{1}{2}$  m. N. & 174 on S. face; and raise a mound of stone 2 ft. base, 1  $\frac{1}{2}$  ft. high N. of con. Rite impracticable.
- 49.00 Ravine 50 ft. deep, course N. E.
- 67.00 Ravine 60 ft. deep, course N. E.
- 80.74 The con of secs. 10, 11, 14 & 15, 23  
 Land, mountainous.  
 Soil, stony, 4<sup>th</sup> Rate.  
 Timber, a few scattering cedars.  
 Mountainous land covered with  
 dense undergrowth 80.74 chs.

N. 0° 00' W.

bet. secs. 10 & 11

## Subdivision of T. 29 N. R. 2 W.

Over mountainous land, covered  
with dense, buck brush.

10.50 Ravine 100ft. deep, course E.

15.00 Top ascent of 100ft. bears E. & W.  
ascend gradually.

37.00 Ridge 100ft. high bears E. & W.

40.00 Set a limestone  $16 \times 8 \times 4$  ins., 90  
ins. in the ground for  $\frac{1}{4}$  sec. cor.  
marked  $\frac{1}{4}$  on SW, & 11 on E. face;  
dig pits  $18 \times 18 \times 12$  ins., N. & S. of  
stone 3ft. dist., and raise a  
mound of earth  $3\frac{1}{2}$  ft. base  $1\frac{1}{2}$   
ft. high, W. of cor.

41.00 Drain, course, N.E.

63.00 Drain, course, E.

65.00 Ridge 50ft. high, bears E. & W.

80.00 Set a limestone  $12 \times 8 \times 5$  ins., 10  
ins. in the ground for cor. of sec  
2, 3, 10, & 11, marked with 5 notches

Subdivision of T. 29 N. R. 2 W.

on S, & 2 notches on E. edges; and  
 raise a mound of stone 2 ft. base,  
 1½ ft. high, W. of cor., Pits  
 impracticable.

Land, mountainous.

Soil, sandy & stony, & slate

No timber.

Mountainous land covered with  
 dense undergrowth & rocks.

Sept. 26; at this cor. cut off

$1^{\circ}16\frac{1}{2}'$  S. on the decl. arc; and at  
 11h 51.3m A.M., Sept., observed the  
 sun on the meridian; the  
 resulting lat. is  $35^{\circ}53'20''$   
 which is about 0.1' greater than the prop. lat.

S.  $89^{\circ}58'E$ .

on a random line bet. Dec. 2 & 11.

31.85 To Rim of Canyon.

Subdivision of T. 29 N. R. 2 W.

To determine the dist. across  
I set a flag on E. rim of canyon  
line, then measure a base  
S. 13° W. 27.00 chs. to a point from  
which the flag bears N. 52° 58' E.  
and from the flag, 3. end of base  
bears S. 52° 58' W.; the angles  
in order of measurement are  
respectively 102° 58', 39° 58', &  
37° 04'; their sum being 180°;  
therefore the dist. across is

$$\frac{\sin 39^{\circ} 58'}{\sin 37^{\circ} 04'} \times \text{base}$$

$$\text{a. c. Log. } \sin 37^{\circ} 04' = 0.219867$$

$$\text{Log. } \sin 39^{\circ} 58' = 9.807766$$

$$\text{Log. } 27.00 \quad \underline{1.431364}$$

$$\text{Log. } 28.77 \quad 1.458997$$

also 31.85 chs. + 28.77 chs. = 60.62 chs.  
(For diagram see next page.)

40.00 Point for  $\frac{1}{4}$  sec. cor. falls in Canyon

60.62 Flag on E. rim of canyon.



BCO' 1130

Subdivision of T. 29 N. R. 2 W.

80.12 Intersect No. 45. line 18 lks. S.  
of the cor. of secs. 1, 2, 11, & 12.  
Thence down  
S. 89° 54' W.

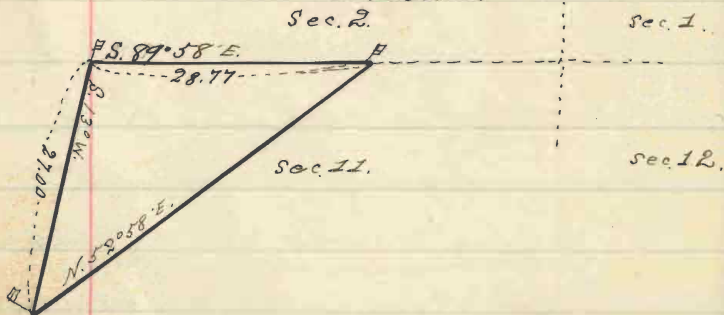
on a true line bet. secs. 2 & 11.

Over mountainside covered  
with dense buck brush, and scattering  
cedars. Descend from cor.

7.80 Ravine 100 ft. deep, course S. W.

9.00 Top ascent of 75 ft. bears N. E. 25. W.

19.50 Rim of Cataract Canyon, bears  
N. W. & S. E. to S. & S. W. about 100 ft.  
above the bottom.



## Subdivision of T. 29 N. R. 2 W.

40.06 Point for  $\frac{1}{4}$  sec. cor. falls in  
Canyon.

48.20 Line of Canyon bears N. to N.W. &  
S.  $10^{\circ}$  W.

48.27 Point for witness cor. falls on flat  
limestone ledge, &

cut a cross (+) at exact point  
for cor. for witness cor. to  $\frac{1}{4}$   
sec. cor., and marked  $\frac{1}{4}$  on  
N. side & 11 on S. side of cross;  
and raise a mound of stone 2 ft.  
base,  $1\frac{1}{2}$  ft. high, N. of cor. Pit  
impracticable.

ascend from cor.

67.00 Ridge 150 ft. above witness cor., bear  
N.W. & S.E.

80.12 The cor. of sec. 2, 3, 10 & 11.

Land, Mountainous.

Soil, stony, 4<sup>th</sup> Rate.

## Subdivision of T. 29 N. R. 2 W.

Timber, scattering, cedar,  
 Mountainous land, S. 5. 12 chs.

N. 0° 01' W.

on a random line bet. secs. 2 & 3.

24.34 Riv. of Cataract Canyon.

To determine the dist. across I  
 set a flag on N. side of canyon  
 on line, then measure a base  
 N. 60° 01' W. 23.00 chs. to a point  
 from which the flag bears  
 N. 45° 25' E.; and from the flag  
 W. end of base bears S. 45° 25' W.

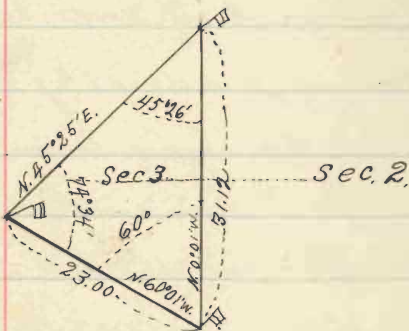
The angles in order of measurement  
 are respectively 60°, 74° 34', &  
 45° 26', their sum being 180°.

Therefore the dist. across is

$$\frac{\sin 74^{\circ} 34'}{\sin 45^{\circ} 26'} \times \text{Base or}$$

## Subdivision of T. 29 N. R. 2 W.

a. c Log. Sin. $45^{\circ}26'$	0.147255
Log sin. $74^{\circ}34'$	9.984050
Log. 23.00	<u>1.361728</u>
Log. 31.12	1.493033



Also  $31.12 + 24.34 = 55.46$  chs. or  
15.46 chs. N. of

4000 Point for  $\frac{1}{4}$  sec. cor. falls in canyon

79.94 Intersect N. bdy. of T. 6 Ch. W. of  
the cor. of secs. 2, 3, 34 & 35, which  
I established Aug. 31<sup>st</sup>, 1900.

Thence I run

S.  $0^{\circ}02'$  W.

on a true line bet. secs. 2 & 3.

## Subdivision of T. 29 N. R. 2 W.

- Over maintaining landscape  
with dense chico & bush brush.
- Descend from cor.
- 4.50 Canyon 200ft. deep, course S. & ascend.
- 12.75 Top ascent of 300ft, bears N.E. & S.W.  
Descend gradually to
- 24.48 Rim of Canyon bears N.W. & S.E.
- 39.94 Point for  $\frac{1}{4}$  sec. cor. falls in Canyon  
2400 ft. below the top.
- 55.60 Rim of Canyon bears N. 55° W. & S 55° E  
Point for witness cor. to  $\frac{1}{4}$  sec. cor.  
falls on flat Limestone ledge.  
Cut a cross (+) at exact point for  
witness cor. to  $\frac{1}{4}$  sec. cor., and mark  
 $\frac{W.C}{4}$  on W. side & 2 on E. side of cor;  
and raise a mound of stone 2 ft.  
base, 1½ ft. high, W. of cor. It's  
impracticable.
- 65.00 Ravine, course N.E.

BOOK 1130

Subdivision of T. 29 N. R. 2 W.

79.94 The cor. of secs. 2, 3, 10 &amp; 11.

Land, Mountainous,

Soil, stony, 4<sup>th</sup> Rate.

No timber.

Mountainous land, 79.94 acs.

Sept. 26, 1900

Sept. 27; at 7<sup>h</sup> 32<sup>m</sup> a.m., beat,  
 A set off  $1^{\circ} 34\frac{1}{2}'$  S. on the decl. arc,  
 35<sup>o</sup> 49' on the lat. arc; and determine  
 a true meridian with the solar  
 at the standard cor. of secs 33 &  
 34, which is a limestone 12 x 6 x  
 12 ins. above ground, firmly set,  
 marked & witnessed as described  
 by the surveyor General.

Thence a run

N. 0<sup>o</sup> 02' W.

bet. secs. 33 &amp; 34.

## Subdivision of T. 29 N. R. 2 W.

- Over Rolling land covered  
with dense chie's undergrowth,  
0.40 Road, bears E. & N.  
40.00 Set a limestone 15 X 14 X 10 ins.,  
10 ins. in the ground for  $\frac{1}{2}$  sec. cor.  
marked  $\frac{1}{4}$  on W. & 34 on E. face;  
and raise a mound of stone  
2 ft. base, 1  $\frac{1}{2}$  ft. high, W. of cor.  
Pits impracticable.
- 60.00 S.E. point of rocky ridge bears N.W.  
71.30 Road, bears N.W. & S.E.  
80.00 Set a limestone 20 X 10 X 5 ins.,  
15 ins. in the ground for cor.  
of secs. 27, 28, 33 & 34, marked  
with 1 notch on S. & 3 notches  
on E. edges; dig pits 18 X 18 X 12  
ins. in each sec. 5  $\frac{1}{2}$  ft. dist.;  
and raise a mound of earth  
4 ft. base, 2 ft. high W. of cor.  
Land, Rolling.  
Soil, sandy & stony. 3rd & 4th Rate.

Subdivision of T. 29 N. R. 2 W.

No timber.

Land covered with dense  
undergrowth 80,000 chs.

East

on a random line bet. secs. 27 & 34

4000 Set trap,  $\frac{1}{4}$  sec. cor.

8004 Intersect N. 45, line 16 chs. N.  
of the cor. of secs. 26, 27, 34, ~~25~~

Thence down

N. 89° 53' W.

on a true line bet. secs. 27 & 34

Over Rolling land covered with  
dense chid. undergrowth.

4002 Set a limestone 15 x 10 x 5 in. 10 in.  
in the ground for  $\frac{1}{4}$  sec. cor.  
marked  $\frac{1}{4}$  on N. &  $\frac{3}{4}$  on S. faces;  
and raise a mound of stone 2 ft.  
base,  $1\frac{1}{2}$  ft. high N. of cor.



Subdivision of T. 29 N. R. 2 W.

- Pits impracticable.
- 53.00 Drain, course S.W.
- 68.00 Low Ridge bears N.W. & S.E.
- 80.04 The cor. of secs. 27, 28, 33 & 34.
- Land Rolling.
- Soil, stony, 4<sup>th</sup> Rate.
- No timber.
- Land covered with dense  
undergrowth 80.04 ch.
- 
- N. 0.02' W. bet. sec. 27  
bet. secs. 27 & 28.
- Over Rolling land, covered  
with dense chico undergrowth.
- 5.00 Ascend, bears N.W. & S.E.
- 15.00 Ridge bears E. & W.
- 23.00 Ravine, course W.
- 38.00 Low Ridge, bears E. & W.
- 40.00 Set a limestone 15x12x5 ins.

## Subdivision of T. 29 N. R. 2 W.

10 ins. in the ground for  $\frac{1}{4}$  sec.  
 cor., marked  $\frac{7}{4}$  on N. & 27 on E. face;  
 dig pits 18x18x12 ins., N. & S. of stone  
 3 ft. dist.; and raise a mound  
 of earth  $2\frac{1}{2}$  ft. base,  $\frac{1}{2}$  ft. high,  
 W. of cor.

43.00 Descend gradually, bear NW & S.E.

80.00 Set a limestone 15x10x7 ins.,

10 ins. in the ground for cor. of sec.  
 21, 22, 27 & 28, marked with  
 2 notches on S. & 3 notches on E. edge;  
 dig pits 18x18x12 ins., in each sec.  
 $5\frac{1}{2}$  ft. dist.; and raise a mound of  
 earth 4 ft. base, 2 ft. high W. of cor.

Land Rolling.

Soil stony, 4th Rate

No timber.

Land covered with dense under  
 growth 50,000 cho.

## Subdivision of T. 29 N. R. 2 W.

Sept. 27; At this cor. I set off  
 $1^{\circ}39\frac{1}{2}'$  S. on the decl. arc; and at  
 11 h 51 m a.m., by the observation of the  
 sun on the meridian; the  
 resulting lat. is  $35^{\circ}50'40''$   
 which is correct.

S.  $89^{\circ}53'$  E.

on a random line bet. secs. 22 & 27

40.00 Set temp.  $\frac{1}{4}$  sec. cor.

80.08 Intersect N. & S. line 7 lks. S. of  
 the cor. of secs. 22, 23, 26, & 26.

Thence I run

N.  $89^{\circ}54'$  W.

on a true line bet. secs. 22 & 27.

Over Rolling land covered with  
 dense chico undergrowth.

40.04 Set a limestone  $18 \times 10 \times 4$  ins., 12  
 ins. in the ground for  $\frac{1}{4}$  sec. cor.

## Subdivision of T. 29 N. R. 2 W.

marked  $\frac{1}{4}$  on N. & 27, on S. face;  
 dig pits 18X18X12 ins., E. & W. of  
 stone 3 ft. dist.; and raise a  
 mound of earth  $3\frac{1}{2}$  ft. base,  $\frac{1}{2}$   
 ft. high, N. of cor.

72.00 Low Ridge, bears N. & S.

80.08 The cor. of sec. 21, 22, 27 & 28,

Land, Rolling,

Soil, stony, 4<sup>th</sup> Rate.

No timber.

Land covered with dense  
 undergrowth 8000 lbs.

N. 0° 02' W.

bet. sec. 21 & 22,

Over Rolling land covered with  
 dense chid undergrowth.

4.00 Set a limestone 17X10X6 ins., 11 ins.,

in the ground for  $\frac{1}{4}$  sec. cor., marked

## Subdivision of T. 29 N. R. 2 W.

$\frac{1}{4}$  on W. & 22 on E. face; dig pit  
18 X 18 X 12 ins., N. vs. of stone 3 ft  
dist; and raise a mound of  
earth  $3\frac{1}{2}$  ft. base,  $1\frac{1}{2}$  ft. high  
W. of cor.

8050 Set a limestone 20 X 12 X 8 ins.  
15 ins. in the ground for cor.  
of sec. 15, 16, 21 & 22, marked  
T. 29 N. on N.E.  
R. 2 W. on S.E. with 3 notches  
on S. & E. edges; dig pits 18 X 18 X  
12 ins., in each sec.  $5\frac{1}{2}$  ft. dist;  
and raise a mound of earth 7 ft  
base, 2 ft. high W. of cor.

Land, Rolling.

Soil, stony & sandy 3 ft. at base.  
No timber.

Land covered with dense under-  
growth of sassafras.

Concluded, Book 1131.