

Book H. 2
Subdivisions of. *←*

T1N, R. 23W

1147

BOOK 1147

No. 1147

BOOK 1147

4-671

FIELD NOTES
GENERAL LAND OFFICE.

BARRY, U.S.D.S.

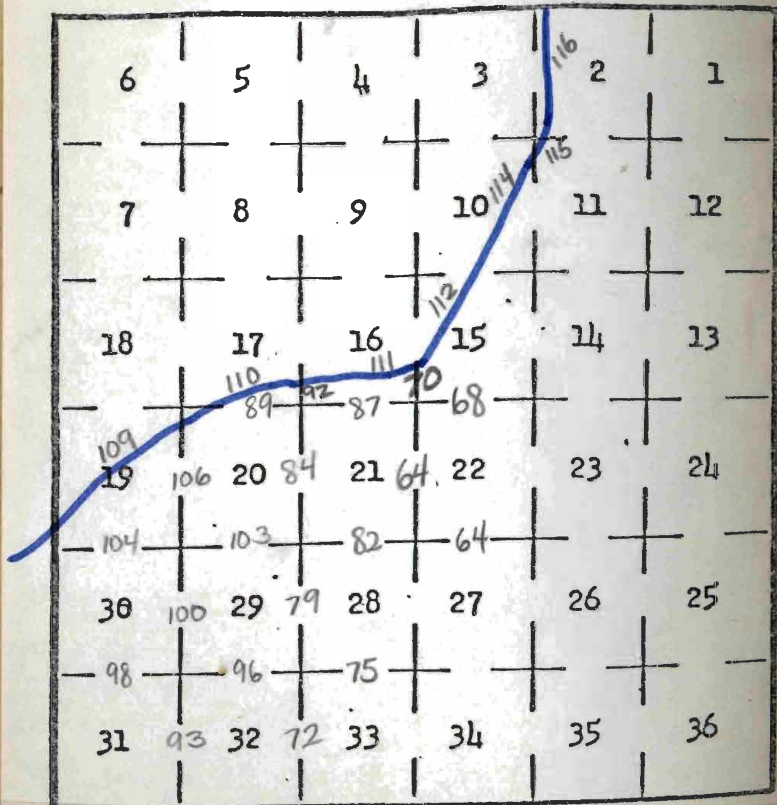
es 39. Indexed, Book 1146

compared, ex.

L. & J.

Township 1N R. 23W

(63)



No. 1147 BOOK. 1147 64.

Subdivision of T. 1 N., R. 23 W.

chains.

$\frac{1}{4}$ S. 27 B.T. ✓

A palo fierro, 12 ins. diam., bears
N. 67° W., 185 lks. dist., marked
 $\frac{1}{4}$ S. 22 B.T.; I raised a
mound of stone, 4 ft. base,
2 ft. high, ~~at~~ of cor.

79.84

The cor. of secs. 21, 22, 27, and 28.
Sand, level.

Soil, sandy; 1st-rate

Timber, a few scattering
palo verde, and palo fierro trees,
some grease-wood and under-
growth.

May 3, 1902

N. 0° 2' W., bet. secs. 21 and 22.

Over level sandy mesa, through
a few scattering trees, and
some grease-wood under-

Subdivision of T. 1 N.

Chavins

growth.

34.50

Gulch, 20 lks. wide, course W,
about 1.50 chs. to valley.

38.00

To edge of mesa, 6 ft. high,
bears, N. 30° E., and S. 30° W.Enter the Cibola Valley, bears
N. 30° E., and S. 30° W.

39.70

Road from Yuma to Chrenberg
bears N. 30° E., and S. 30° W.,

40.00

Set a mesquite post, 3 ft. long,
5 ins. sq., 24 ins. in the ground,
for $\frac{1}{4}$ sec. cor. marked, $\frac{1}{4}$ S. 21 on W. face; 22 on E. face;
from which.A mesquite, 6 ins. diam; bears
N. 39° E., 113 lks. dist; marked
 $\frac{1}{4}$ S. B. T.A mesquite tree, 8 ins. diam;
bears S. 77° W., 69 lks. dist;

R. 23 W. - continued.

Chains:

marked $\frac{1}{4}$ S. B. T.

41.00 Enter dense arrow-wood and mesquite, some willow; bears N. 30° E., and S. 30° W.

44.00 Slough (now dry) 1.00 ch. wide, 4 ft. deep, course S. 21° W.; thence nearly parallel, and say 1 to 3 chs. E. of Cibola Canal

80.00 Set a mesquite post, 4 ft. long, 6 ins. sq., 36 ins. in the ground, for cor. of secs. 15, 16, 21, and 22 marked

T. 1 N, S. 15 on N. E.,

R. 23 W, S. 22 on S. E.

S. 21 on S. W., and

S. 16 on N. W. faces; with

3 notches on S. and E. faces; from which

A mesquite, 12 ins. diam., bears

Subdivision of T. 1 N.

Chains.

N. 89° E., 96 lks. dist. marked
T. 1 N., R. 23 W., S. 15 B. T. ✓

A mesquite, 10 ins. diam; bears
S. 65° E., 67 lks. dist., marked
T. 1 N., R. 23 W., S. 22, B. T. ✓

A mesquite, 8 ins. diam, bears
S. 6° W., 165 lks. dist., marked
T. 1 N., R. 23 W., S. 21, B. T. ✓

A mesquite, 12 ins. diam, bears
N. 17° W., 145 lks. dist., marked
T. 1 N., R. 23 W., S. 16, B. T. ✓

This cor. stands on the left
and E. bank of the Cibola
Canal.

Sand, level.

Soil, sandy, and loam; 1st rate.
Timber, a few palo verde
trees on mesa; mesquite
and willow in valley;

R. 23 W. - continued.

Chains.

undergrowth, mesquite and
crow-wood.

Dense undergrowth. 39.00 ch.

East on a random line
bet. secs. 15 and 22.

40.00 Set temp. $\frac{1}{4}$ sec. cor.

79.86 Intersect N. and S. line, 3 lks. N.
of cor. of secs. 14, 15, 22, and 23

Thence I run

N. $89^{\circ} 59'$ W. on a true line,
bet. secs. 15, and 22.

In wash valley, through palo
verde, and palo fierro timber,
and grease-wood undergrowth

29.00 Dry creek, 60 lks. wide, course
N. 55° W.

39.93 Set a malpais stone, 16 x 7 x 5

Subdivision of T. 1 N.

Chains.

ins. 11 ins. in the ground,
for $\frac{1}{4}$ sec. cor., marked $\frac{1}{4}$
on N. face; from which
A palo verde, 14 ins. diam; bears
S. 73° W., 256 lks. dist., marked
 $\frac{1}{4}$ S. 22, B.T.

A palo verde, 10 ins. diam; bears
N. 84° W., 244 lks. dist., marked
 $\frac{1}{4}$ S. 15, B.T. ✓

55.00

Enter the Cibola Valley, bears
N. E. and S. W.; timber

hence, heavy mesquite,
with a few palo verde and
palo fino, trees; greese-
wood and undergrowth

59.60

Road from Yuma to Ehrenberg
bears N. 30° E., and S. 30° W.

74.00

Change from sandy to loam,
soil; thence dense mesquite

R. 23 W. - Continued.

Chavis.

and arrow-wood

79.86. The cor. of secs. 15, 16, 21, and 22
sand level.Soil, gravelly, sandy and loamy;
2nd and 1strate.Timber, mesquite, palo verde
and palo fierro; undergrowth
arrow-wood, mesquite and
grease-wood.

Dense undergrowth. 79.86 chs.

N. 0° 2' W., bet. secs. 15 and 16

Over level bottom land

Through heavy timber
and dense undergrowth.

0.65 Cibola Canal (now dry) 36 fks.

wide, 4 ft. deep, course S. 15° W.

34.00 To left bank of Colorado River

71
chains.

Subdivision of T. 1 N.

Set a mesquite post, 3 ft. long,
4 ins. sq., 36 ins. in the ground,
for meander cor. of fracl.,
secs. 15 and 16, marked

M. C. on N.,

T. 1 N. on S.,

R. 23 W., S. 15 on E., and

S. 16 on W. faces; from which

A mesquite, 6 ins. diam, bears

S. 4° E., 106 lks. dist., marked

T. 1 N., R. 23 W., S. 15, M. C. B. T. ✓

A mesquite, 8 ins. diam, bears

S. 3° W., 206 lks. dist., marked

T. 1 N., R. 23 W., S. 16, M. C. B. T. ✓

Sand, level.

Soil loam; 1st-rate.

Timber, and undergrowth
mesquit, torneo, arrow-wood
and some willow.

may 5, 1902.

R. 23 W. - continued.

Chains.

From the standard cor. of
secs. 32 and 33 in the S. bdy
of the Tp, Iron
N. $0^{\circ} 2' W.$, bet. secs. 32 and 33.

Over level mesa.

- 12.00 To edge of mesa bears N. $60^{\circ} E.$
and S. $60^{\circ} W.$, descend 10 ft. to
- 13.00 Enter Cibola Valley, and
heavy mesquite timber,
bear N. $60^{\circ} E.$, and S. $60^{\circ} W.$
- 13.50 Road from Luma to Ehrenberg,
bears N. E. and S. $60^{\circ} W.$
- 18.00 Leave mesquite, and enter
arrow-wood and willow
brush, bear N. E. and S. W.
- 20.00 Enter reservoir (now dry)
bears N. E. and S. W.
- 24.00 Leave vegetation, bears N. $24^{\circ} E.$
and S. $36^{\circ} W.$, thence

Subdivision of T. 1 N.

Chains.

Crossing flat bottom of the reservoir, which is here about 15 ft. deep.

40.00

Set a corner post, 3 ft. long, 5 ins. sq., with marked stone, 24 ins. in the ground, for $\frac{1}{4}$ sec. cor. marked.

$\frac{1}{4}$ S. 32 on W. face; 33 on ~~W.~~ E. face; dug pits 18 x 18 x 12 ins.,

N. and S. of post, 3 ft. dist., and raised a mound of earth, $3\frac{1}{2}$ ft. base, $1\frac{1}{2}$ ft. high, W. of Cor.

42.40

Begin, at edge of vegetation, ascent from reservoir, bears N. 22° E., and S. 22° W.; ascend 20 ft. to

45.20

Wire fence on apex of the N. bank of reservoir, bear N. 25° E. and S. 25° W., thence;

R. 23 W. - Continued

chains.

dense arrow-wood brush,
and a few mesquite trees.

67.50

Station from which

the N. E. cor. of Otto Dirhoff's
Desert Land Claim, and the
S. E. cor. of Forest Liew Land,
owned by Thomas O. Toland,
which is a mesquite post,
1 ft. high 4 ins. sq., bears West
9.20 chs. distant.

80.00

Set a mesquite post, 3 ft. long,
6 ins. sq., 24 ins. in the ground,
for cor. of secs. 28, 29, 32, and 33,
marked

T. 1 N., S. 28, on N. E.,

R. 23 W., S. 33, on S. E.,

S. 32 on S. W., and

S. 29 on N. W. faces; with 1

notch on S., and 4 notches on E.

95

BOOK 1147

Subdivision of T. 1 N.

Charris.

edges; from which

A mesquite, 14 ins. diam., bears

S. 87° W., 40 fks. dist., marked

T. 1 N. R. 23 W., S. 33 B. T. ✓

No other tree within limits;

dug pits, 18 x 18 x 12 ins. in

each sec., 5½ ft. dist.; and

raised a mound of earth
4 ft. base, 2 ft. high, N. of corr.

sand level.

Soil, gravelly and loam;

2nd and 1st rate.

Timber, mesquite; undergrowth
arrow-wood and willow.

Dense undergrowth 48.80chs.

East on a random line

bet. secs. 28 and 33

R. 23 W. - continued.

- Charis.
 40.00 Set temp. $\frac{1}{4}$ sec. corr.
 79.96 Intersect N. and S. line, 18 lks.
 N. of the corr. of secs.
 27, 28, 33, and 34.
 Thence I run
 N. $89^{\circ} 52'$ W., on a true line
 bet. secs. 28 and 33
 Over mesa.
 7.00 Leave mesa, descent 8 ft.,
 and enter wash valley and
 timber bear N. 53° W. and S. 53° E.
 24.06 Touch northerly point of
 mesa, bearing S. 45° E.;
 thence down wash about 100 ch.
 N. of mesa.
 39.98 Set a malpais stone, $18 \times 8 \times 8$
 ins, 12 ins. in the ground,
 for $\frac{1}{4}$ sec. corr. marked $\frac{1}{4}$
 on N. face; from which

Sub-division of T. 1 N.

Chains.

A palo verde, 14 ins. diam., bears
N. 33° E., 63 lks. dist., marked
1/4 S. 20 B.T. (tree in wash)

A palo verde, 12 ins. diam., bears
S. 51° W., 330 lks. dist., marked
1/4 S. 33 B.T. (tree on mesa)

This cor. stands in wash, 60
lks. N. of base of mesa.

43.50

Edge of mesa and left bank
of wash, 5 ft. high, bears N. 50° W
and S. 80° E.

45.00

Road from Yuma to Ehrenberg
bears N. E. and S. W.

47.00

To top of bank 6 ft. high; the
edge of mesa and Cibola
Valley, bear N. 17° E. and
S. 17° W., enter Cibola Valley
and dense undergrowth.

50.00

Enter "reservoir" (now dry)

R. 23 W. - continued.

Charris.

Which, at this place is a natural depression about 10 ft. deep, course N. 35° E. and S. 35° W.

61.00

Leave the reservoir, course N. 35° E. and S. 35° W.

63.00

Wire fence, bears N. 34° E. and S. 34° W.

79.96

The cor. of secs. 28, 29, 32, and 33.

Sand, nearly level.

Soil, gravelly, and loam;
2nd and 1st rate.

Timber, palo verde, palo fierro
misquite; undergrowth
arrow-wood.

Heavily timbered or dense
undergrowth 68.00 chs.

Subdivisions of T. 1 N.

Chains

- N. $0^{\circ} 2' W$, bet. sec. 28 and 29
Over level land, through
tornus and arrow-wood
undergrowth.
- 40.00 Set a mesquite post, 3 ft. long,
4 ins. sq. with marked stones;
24 ins. in the ground, for $\frac{1}{4}$
sec. cor. marked $\frac{1}{4} S. 28$ on $\frac{1}{2}$ face;
29 on $\frac{1}{2}$ face; dug pits
18 x 18 x 12 ins. N and S. of post,
3 ft. dist., and raised a
mound of earth, $3\frac{1}{2}$ ft. base,
 $\frac{1}{2}$ ft. high, N. of cor.
No bearing trees available.
- 59.00 Slough now dry 700 ch.
wide 3 ft. deep, course E and
W; thence mesquite
with undergrowth.
- 67.50 Station on the N. line of

R. 23 W. - Continued.

Chains.

James H. Whitworth's Desert Sand Claim, and the S. line of Wellington R. Kirkpatrick's Desert Sand Claim; distant W. 30.80 chs. from cor. common to said claims, which is a mesquite post, 1 ft. high, 4 ins. sq. ~~marked~~ marked $\frac{1}{2}$ N.

80.00

Set a mesquite post, $3\frac{1}{2}$ ft. long, 6 ins. sq., 30 ins. in the ground, for cor. of sec. 20, 21, 28, and 29, - marked

T. 1 N., S. 21 on N. E.,
R. 23 W., S. 28 on S. E.,
S. 29 on S. W., and
S. 20 on N. W. faces; with
2 notches on S. and 4 notches
on E. edges; from which

Sub-division of T. 1 N.

Charris.

A mesquite, 12 ins. diam., bears
N. 60° E., 42 lks. dist., marked
T. 1 N., R. 23 W., S. 21, B.T. ✓

A mesquite 14 ins. diam., bears
S. 12° E., 125 lks. dist., marked
T. 1 N., R. 23 W., S. 28 B.T. ✓

A mesquite 4 ins. diam., bears
S. 16° W., 245 lks. dist., marked
T. 1 N., R. 23 W., S. 29, B.T. ✓

A mesquite, 8 ins. diam., bears
N. 86° W., 240 lks., dist., marked
T. 1 N., R. 23 W., S. 20, B.T. ✓

Land, level.

Soil, loam; 1 strata.

Timber, mesquite; under-
growth arrow-wood and
tornes.

Dense undergrowth 80.00 chs.

R. 23 W. - continued.

Chains.

S. $89^{\circ}52'$ E, on a random line
bet. sec. 21 and 28.

40.00 Set temp. $\frac{1}{4}$ sec. cor.

80.16 Intersect N. and S. line, 9 lks. S.
of the cor. of sec. 21, 22, 27, and 28.

Thence run

N. $89^{\circ}56'$ W, on a true line
bet. sec. 21 and 28.

Over mesa.

10.00 Road from Yuma to Ehren-
berg, course N. and S.

11.00 A corral at place locally
known as Rancho Overmade
bears N. 4.00 chs. dist,

12.00 Leave mesa at bank 8 ft.
high and enter Cibola
Valley, bear N. and S.; thence
dense undergrowth.

14.25 Slough (now dry) called

Subdivisions of T. 1 N.

Chains.

- reservoir, 250 chs. wide, 6 ft. deep. course N. 16° E., and S 16° W.
- 29.70 Wire fence, bears N. 15½° E. and S. 15½° W.
- 40.08 Set a torus post, 3 ft. long, 4 ins. sq., 24 ins. in the ground, for ¼ sec. cor. marked ¼ S. 21 on N. face; 28 on S. face; from which a willow 10 ins. diam., bears N. 14° W., 47 lks. dist., marked ¼ S. B.T.
- A torus 8 ins. diam., bears S. 21° W., 38 lks. dist., marked ¼ S. B.T.
- This cor. stands in depression 100 ch. wide, 2 ft. deep, course N. W. and S. E.
- 80.16 The cor. of secs. 20, 21, 28, and 29. Sand, level.

R. 23 W. - continued.

Chains.

Soil gravelly; and loam;
2nd and 1st-rate.

Timber, and undergrowth
mesquite, torneo, willow,
and arrow-wood.

Dense undergrowth 65.66 chs.

May 6, 1902.

N. 0° 2' W., bet. sec. 20 and 21.

Over level land; some
mesquite, with arrow-wood
undergrowth.

6.00

Dense mesquite, torneo
and arrow-wood, with
some cottonwood and
willow. Bars E. and W.,
on land, subject to overflow
1 and 2 ft. deep.

15.00

Slough now dry 790 lks. wide

Subdivision of T. 1N.

Chains

- 26.00 3 ft. deep, course E. and W.
Slough, (now dry) 60 lks. wide,
3 ft. deep, course, E. and W.
- 24.00 Slough (now dry) 60 lks. wide,
3 ft. deep, course E. and W.
- 30.00 Leave overflow land; and the
arrow-wood, bear E. and W.
- 40.00 Set a mesquite post, 3 ft. long,
bino. sq., 24 ins. in the ground,
for $\frac{1}{4}$ sec. cor., marked
 $\frac{1}{4}$ S. 20 on W. face; 21 on E.
face; from which
A mesquite, 24 ins. diam, bears
S. 64° E., 143 lks. dist., marked
 $\frac{1}{4}$ S. B.T.
A mesquite, 14 ins. diam, bears
S. 51° W., 12 lks. dist. marked
 $\frac{1}{4}$ S. B.T.
- 53.00 Arrow-wood, begins here

R. 23 W. - continued.

Charris

in the timber.

80.00

Set a mesquite post, 3 ft. long, 4 ins. sq., 24 ins. in the ground, for cor. of sec.

16, 17, 20, and 21, marked

T. 1 N., S. 16 on N. E.,

R. 23 W., S. 21 on S. E.,

S. 20 on S. W., and

S. 17 on N. W. faces; with

3 notches on S. and 4 notches on E. edges; from which

A torus 8 ins. diam.; bears N. 72° E., 60 lks. dist. marked

T. 1 N., R. 23 W., S. 16, B. T. ✓

A mesquite, 14 ins. diam.; bears S. 45° E., 63 lks. dist.; marked

T. 1 N., R. 23 W., S. 21 B. T. ✓

A torus, 4 ins. diam.; bears

S. 82° W., 37 lks. dist.; marked

Subdivision of T. 1 N.

Chains

T. 1 N., R. 23 W., S. 20 B.T. ✓

A mesquite, 16 ins. diam.; bears
N. 31° W.; 64 lks. dist.; marked

T. 1 N., R. 23 W., S. 17, B.T. ✓

Land, level.

Soil, loam; 1st-rate.

Timber, mesquite, cotton-wood
and willow; undergrowth,
arrow-wood, mesquite and
turner.S. 89° 56' E. on a random line,
bet. sec. 16 and 21.

40.00

Set temp. 1/4 sec. cor.

80.08

Intersect N. and S. line, 3 lks.

S. of the cor. of sec. 15, 16, 21, and 22.

Thence run

N. 89° 57' W. on a true line

R. 23 W. - continued.

Chavis.

Bet. sec. 16 and 21.

• Over level land, through timber and dense undergrowth.

0.17 Cicla canal, (now dry) 30 lks wide, 4 ft. deep, course S. 15° W.

9.36 Wire fence, bears N. 15° E. and S. 15° W.

40.04 Set a mesquite, post, 3 ft. long, 4 ins. sq.; 24 ins. in the ground, for $\frac{1}{4}$ sec. cor. marked $\frac{1}{4}$ S. 16 on N. face; 21 on S.

face; from which

A mesquite, 10 ins. diam., bears N. 15° E., 35 lks. dist., marked $\frac{1}{4}$ S. B.T.

A mesquite 10 ins. diam., bears S. 70° W., 75 lks. dist., marked $\frac{1}{4}$ S. B.T.

Subdivision of T. 1 N.

Chamis-

bb. 96

A cottonwood 24 ins. diam., on
line, I mark with 2
notches on E. and W. sides

80.08

The cor. of secs. 16, 17, 20, and 21.
Sand, level.

Soil, warm; 1st rate.

Timber, mesquite, tamar, willow and cotton-wood; undergrowth of the same and arrow-wood.

Dense undergrowth 80.08chs.

West on a true line

bet. secs. 17 and 20

Our level land, through scattering mesquite and arrow-wood undergrowth

34.00

Enter cottonwood, willow,

R. 23 W. - continued.

Chainis.

and tones, with the mesquite
and arrow-wood bears

N. E. and S. W.

40.00

Set a mesquite post, 3 ft.
long, 4 ins. sq., 24 ins. in the
ground, for $\frac{1}{4}$ sec. cor.,marked $\frac{1}{4}$ S. 17 on N. face;
20 on S. face, from whichA cottonwood, 12 ins. diam.,
bears S. 55° W., 180 lks. dist.,
marked $\frac{1}{4}$ S. B. T.A cottonwood, 12 ins. diam.,
bears N. 73° W., 120 lks. dist.,
marked $\frac{1}{4}$ S. B. T.

63.00

To left bank of Colorado
River.Set an alimo post, 3 ft. long,
4 ins. sq., 24 ins. in the ground,
with marked stone
for meander cor. of fracl.

Subdivision of T. 1 N.

Chains

secs. 17 and 20, marked

M.C. on W.,

T. 1 N. on E.,

R. 23. W., S. 17 on N. and

S. 20 on S. faces; dug pits,

36 x 36 x 12 ins. E. of post, 8 ft.

dist., and raised a mound
of earth, 4 ft. base, 2 ft. high,
E. of cor.

This cor. stands at edge of
dense willow brush; no
trees within limits suitable
for bearing.

Land, level.

Soil, sandy loam; 1st rate.

Timber, mesquite, tories,
cottonwood, and willow, with
undergrowth of the same
and arrow-wood.

R. 23 W. - continued.

chains.

Dense undergrowth 63.00 chs.

N. 0° 3' W., bet. secs. 16 and 17
 Over level bottom land,
 through tamar, and willow
 timber,

22.00

To left bank of Colorado River;
 stream about 8.00 chs. wide.

Set a willow post, 3 ft. long,
 4 ins. sq., 24 ins. in the ground,
 for meander cor. to fracl.

secs. 16 and 17. marked

M. C. on N.,

T. 19 on S.,

R. 23 W., S. 16, on E., and

S. 17 on W. faces; from which

A willow 16 ins. diam., bears

N. 70° E., 43 lks. dist.; marked

Subdivision of T. 1 N.

chains.

T. 1 N., R. 23 W., S. 16, M. C. B. T. ✓

A willow, 4 ins. diam, bears
S. 55° W, 16 lks. dist., marked

T. 1 N., R. 23 W., S. 17, M. C. B. T. ✓

Sand, level.

Soil, loam; 1st rate.

Timber, willow and tamar;
undergrowth of willow, tamar
and arrow-wood.

Dense undergrowth, 22.00 chs.

May 7, 1902

From the standard cor. of
secs. 31 and 32, in the S. bdy.
of the Tp., I run
N. 0° 3' W, bet. secs. 31 and 32
Over level land, through
arrow-wood brush.

10.00

Enter mesquite timber,

R. 23 W. - continued.

Charris.

Bears N. and S.

27.50

Station in the N. line, of
 Stephen B. Seely's Desert
 Land Claim, on the S. line
 of Otto Wiruff's Desert Land
 Claim; distant - E. 920 chs.
 from cor. common to said
 claim, which is a mesquite
 post, 1 ft. high, 4 ins. sq.;
 marked $\frac{1}{2}$ N.

36.00

Leave upland at bank 5 ft.
 high, bears E. and W. and
 enter dense mesquite on
 land subject to over. flow
 2 to 4 ft deep

38.00

Top of ground 2 ft. higher

40.00

Set a mesquite post 3 ft. long
 5 ins. sq., 24 ins. in the ground,
 for $\frac{1}{4}$ sec. cor. marked

Subdivision of T. 1 N.

Chains.

$\frac{1}{4}$ S. 31 on W. face; 32 on E. face; from which

A mesquite 12 ins. diam, bears N. 12° E. 49 lks. dist., marked $\frac{1}{4}$ S. B. T.

A mesquite, 8 ins. diam; bears S. 28° W., 52 lks. dist., marked $\frac{1}{4}$ S. B. T.

45.00

A row-wood undergrowth, mesquite less dense.

80.00

Set a mesquite post 3 ft. long, 5 ins. sq., with marked stumps, 24 ins. in the ground, for cor of recs. 29, 30, 31, and 32, marked.

T. 1 N., S. 29 on N. E.,

R. 23 W., S. 30 on S. E.,

S. 31 on S. W., and

S. 30 on N. W. faces; with 1 notch on S., and 5 notches

R. 23 W. - continued.

Chains.

on E. edges; dug pits,
 18x18x12 ins; in each sec.
 5½ ft. dist, and raised a
 mound of earth, 4ft. base,
 2ft. high, W. of cor.

In dense brush, no suitable
 trees for bearing, within
 limits.

Land level.

Soil, loam; 1st rate.

Timber, mesquite; under-
 growth mesquite and
 arrow-wood.

Dense undergrowth 80.00 chs.

East on a random line
 bet secs 29 and 30

4000

Set temp ¼ sec. cor.

Subdivision of T. 1 N.

Chains

80.06

Intersect N. and S. lines, 10 lks.
N. of the err. of secs, 29, 30, 31
and 32.

Thence Iron

N. $89^{\circ} 56'$ W., on a true line,
bet. secs. 29 and 32.

Over level land, through
scattering mesquite and
dense arrow-wood undergrowth.

4008

Set a mesquite post, 3 ft. long,
6 ins. sq., with marked stone,
24 ins. in the ground, for $\frac{1}{4}$

sec. err., marked

$\frac{1}{4}$ S.; 29 on N. face; 32 on S.

face; dig pits 18 x 18 x 12 ins.,
E. and W. of post, $5\frac{1}{2}$ ft.

dist., and raised a mound
of earth, 4 ft. base, 2 ft. high,
N. of err. No bearing trees

R. 23W. - continued

Chains.

within limits.

80.06

The cor. of secs. 29, 30, 31, and 32
Sand, level.

Soil, loam, 1st rate.

Timber, mesquite; under-
growth, arrow-wood.

Dense undergrowth, 80.06 chs.

West on a random line
bet. secs. 30 and 31.

40.00

Set temp. $\frac{1}{4}$ sec. cor.

79.92

Intersect the W. bdy. of Tp.,
91/2's. N. of the cor. of secs.
25, 30, 31, and 36.

Thence I run

N. 89° 56' E. on a true line
bet. secs. 30 and 31.

Through heavy timber,

Subdivision of T. 1N.

charis.

and dense undergrowth.

30.00

Leave heavy timber,
 bears N. and S., thence through
 mesquite and dense arrow-
 wood.

39.92

Set a mesquite post, 3 ft. long,
 4 ins. sq., 24 ins. in the ground,
 for $\frac{1}{4}$ sec. cor. marked

$\frac{1}{4}$ S. 30 on N. face; S. 31 on
 S. face; from which

A mesquite, 10 ins. diam.; bears
 N. 74° E., 204 lks. dist., marked

$\frac{1}{4}$ S. B. T.

A mesquite, 18 in. diam.; bears
 S. 81° E., 180 lks. dist., marked

$\frac{1}{4}$ S. B. T.

79.92

The cor. of secs. 29, 30, 31, and 32.
 Land, level.

Soil, loam; 1st. rate.

R. 23 W. - continued.

Chains.

Timber, mesquite, torneo,
cottonwood and willow;
undergrowth of the same
and arrow-wood.

Same undergrowth 79, 92 chs.

May 8, 1902.

N. 0° 3' W., let. recs. 29 and 30.

Over level land, through
arrow-wood undergrowth.

12.00

Enter mesquite timber,
bears E. and W.

30.00

Leave mesquite timber, bears
E. and W., thence arrow-wood
brush.

40.00

Set a mesquite post, 3 ft. long,
4 ins. sq., with marked stone,
24 ins. in the ground, for
1/4 sec. Urr. marked 1/4 S. 30, on W.,

Subdivisions of T. 1 N.

Chains.

face; 29 on E. face; dug pits
18x18x12 ins. N. and S. of post,
3 ft. dist, and raised a
mound of earth, 3½ ft. base,
1½ ft. high, W. of cor.

No bearing trees available.

52.00

Enter mesquite, with the
arrow-wood, bear E. and W.

80.00

Set a mesquite post, 3 ft. long,
4 ins. sq., 24 ins. in the ground,
for cor. of sec, 19, 20, 29, and 30
marked

T. 1 N., S. 20 on N. E.,

R. 23 W., S. 29 on S. E.,

S. 30 on S. W., and

S. 19 on N. W. faces; with

2 notches on S., and 5 notches
on E. edges, from which

A mesquite, 12 ins. diam.,

R. 23 W. - continued.

chains.

bears N. 55° E., 103 lks., dist.,
marked

T. 1 N., R. 23 W., S. 20 B. T. ✓

A mesquite, 12 ins. diam., bears
S. 45° E., 208 lks. dist., marked

T. 1 N., R. 23 W., S. 29 B. T. ✓

A mesquite, 10 ins. diam., bears
S. 84° W., 255 lks., dist., marked

T. 1 N., R. 23 W., S. 30 B. T. ✓

A mesquite, 6 ins. diam., bears
N. 61° W., 266 lks. dist., marked

T. 1 N., R. 23 W., S. 19 B. T. ✓

Land level.

Soil, sandy loam; 1st rate.

Timber, mesquite; under-
growth mesquite and
arrow-wood.

Dense undergrowth 8000 chs.

Subdivision of T. 1 N.

chains.

S. $89^{\circ}56'$ E. on a random line
bet. secs. 20 and 29.

46.00

Set temp. $\frac{1}{4}$ sec. err.

80.00

Intersect N. and S. line, 4 lks.

N. of the err. of secs. 20, 21, 28 and 29.

Thence Iron

N. $89^{\circ}54'$ W, on a true line
bet. secs. 20 and 29.

Over level land, through
mesquite, torneo, and arrow-
wood undergrowth.

46.00

Set a mesquite post, 3 ft. long,
4 ins. sq., 24 ins. in the ground,
for $\frac{1}{4}$ sec. err. marked

$\frac{1}{4}$ S. 20 on N. face; 29 on S. face;
from which

A mesquite, 7 ins. diam, bears
N. 29° W, 115 lks. dist, marked
 $\frac{1}{4}$ S. B.T.

R. 23 W. - continued.

chains

A tower 5 ins. diam., bears
 9.61° W, 215 lks. dist., marked
 $\frac{1}{4}$ S. B. T.

80.00

The cor. of secs. 19, 20, 29, and 30,
 land, level.

Soil, sandy loam; 1st rate.

Timber, mesquite; under-
 growth; mesquite and
 arrow-wood.

Dense undergrowth 80.00 chs.

$S. 89^{\circ} 56' W$, on a random line
 bet. secs. 19 and 30

40.00

Set temp. $\frac{1}{4}$ sec. err.

79.88

Intersect W. bdy. of the Tp. 10 lks.
 S. of the cor. of secs.

19, 24, 25, and 30.

Thence I run.

Subdivision of T. 1 N.

chains.

East on a true line
bet. sec. 19 and 30.

Over level land, through
timber and undergrowth,
of mesquite, torneo, cottonwood
and arrow-wood.

39.88 Set a mesquite post, 3 ft. long,
6 ins. sq., 24 ins. in the ground
for $\frac{1}{4}$ sec. cor., marked
 $\frac{1}{4}$ S. 19 on N. face; 30 on S. face
from which
A cottonwood, 8 ins. diam., bears
N. 40° W, 70 pks. dist, marked
 $\frac{1}{4}$ S. B. T.

A torneo, 4 ins. diam., bears
S. 72° E., 32 pks. dist, marked
 $\frac{1}{4}$ S. B. T.

79.88 The cor. of sec. 19, 20, 29, and 30
sand, level, mostly subject

R. 23 W. - continued.

Chains.

to over flow 1 and 2 ft. deep.

Soil, alluvial, and sandy loamy
1st-rate.Timber and undergrowth
mesquite, torneo, cottonwood
and arrow-wood.

Dense undergrowth 79.88 chs.

N. 0° 3' W., bet. secs. 19 and 20.

Over level land, through
mesquite and arrow-wood
undergrowth.

33.00

Commence on land, subject
to over flow about 1 ft. deep.
Torneo with the mesquite
and arrow-wood.

40.00

Set a torneo post, 3 ft. long,
4 ins. sq., 24 ins. in the ground,

Subdivision of T. 1 N.

Chains.

For $\frac{1}{4}$ sec. cor. marked
 $\frac{1}{4}$ S. 19 on W. face; 20 on
 E. face; from which
 A cottonwood, 24 ins. diam, bears
 N. 50° E., 130 lks. dist, marked
 $\frac{1}{4}$ S. B. T.

A cottonwood, 26 ins. diam; bears
 N. 90° W., 126 lks. dist; marked
 $\frac{1}{4}$ S. B. T.

41.00 Enter cottonwood timber, bears
 E. and W. in same
 undergrowth.

63.00 Enter willow brush, bears
 N. 60° E., and S. 60° W.

70.00 To left bank of Colorado
 River.

Set an adirno post, $3\frac{1}{2}$ ft.
 long, 6 ins. sq., with marked
 stone, 30 ins. in the ground

R. 23 W. - Continued

Chains

for cor. of fracl. secs. 19 and 20.
marked

M.C. on N.,

T. 1 N. on S.,

R. 23 W, S. 20 on E., and

S. 19 on W. faces; dug a
pit, 36x36x12 ins., 8 ft. S. of
post, and raised a mound
of earth, 4 ft. base 2 ft. high,
S. of cor. Small willow,
none within limits suitable
for bearing trees.

Land, level.

Soil, sandy loam, and
alluvial; 1st rate.

Timber, mesquite, and
cottonwood; undergrowth,
arrow-wood, mesquite,
torneo and willow.

meanders, T. 1 N.

Dense undergrowth 70.00 chs.
 May 9, 1909.

meanders of the ^{left} ~~right~~ bank
 of Colorado River, up stream.

I commence at the meander
 cor. of frac. secs. 19 and 24,
 on the W. bdy. of the Tp.

Thence I run with
 meanders in sec. 19.

Through timber and
 dense undergrowth.

N. $54\frac{1}{2}^{\circ}$ E., 98.30 chs. Bank 3 ft. high

To the meander cor. of frac.
 secs. 19 and 20.

Sand, level.

Soil, alluvial; 1st etc.

R. 23 W. - Continued.

Timber, cottonwood, mesquite
and willow; undergrowth
of the same and arrow-wood
and torneo.

Dense undergrowth 98.30 chs.

Thence in sec. 20.

Through dense willow brush.
N. 60° E. 19.70 chs. Bank 3 ft. high
To the meander cr. of fract.
secs. 17 and 20.

Sand level.

Soil, alluvial; 1st rate.

Willow undergrowth.

Dense undergrowth 19.70 chs.

Thence in sec. 17.

Meanders, T. 1 N.

Through timber and dense
undergrowth.

N. $70\frac{3}{4}^{\circ}$ E, 66.74 chs. Bank 6 ft. high.

To the meander cr. of frac.
secs. 16 and 17.

Sand, level.

Soil, loam; 1st rate.

Timber, mesquite, torneo,
willow and cottonwood;
undergrowth of the same,
and crow-wood.

Dense undergrowth 66.74 chs.

Thence in sec. 16.

Through timber and
dense undergrowth.

N. $70\frac{3}{4}^{\circ}$ E, 30.00 chs. Bank 6 ft. high.

N. 86° E, 30.00 " Bank 6 ft. high.

R. 23W. - Continued.

East 21.70 chs. Bank 4 ft. high
To meander cor. of frac. l.
secs. 15 and 16.

Sand, level.

Soil, loam; 1st-rate.

Timber, mesquite, torneo
cottonwood and willow;
Undergrowth of the same
and arrow-wood.

Dense undergrowth, 81.70 chs.

May 13, 1902.

Thence in sec. 15

Through dense undergrowth

N. 84° E. 15.00 chs. Head of canal

60 ft. wide, 6 ft deep

course S. 31½° W.

N. 60° E. 26.00 " Bank 6 ft high

N. 41½° E. 27.00 "

Meanders, T. I. N.

N. $31\frac{1}{4}^{\circ}$ E., 13.10 chs.; Bank 7 ft. high
at 12.00 chs. mouth of
ravine 100 ch. wide, 5 ft.
deep, course N. W.; palo
verde trees along its
bank. Along the last
four courses the
bank is wearing away
by action of the current
which sets strong against
the bank. To the meander
cr. of fract.

secs. 10 and 15

Land level.

Soil, loam; 1st rate.

Timber, mesquite; undergrowth
mesquite, torneo, willow;
and arrow-wood.

Dense undergrowth 8.10 chs.

R. 23W. Continued.

Thence in sec. 10

Through dense undergrowth
N. 21° E, 43.00 chs. at 20.00 chs., to
and thence along bluff-
bank 30 ft. high; edge
of mesa; No beach;
no brush.

At 41.00 chs., leave bluff
edge of mesa, bear E.
crossing mouth of wash,
course E; through
undergrowth

North 18.00 chs. Bank 7 ft. high,
and right edge of
the wash. At 16.00 chs.
cross mouth of dry
creek, 2.50 chs. wide
4 ft. deep, course W.

N. 18° E, 7.50" To the meander cor.

Meanders, T. 1 N.

of frac. secs. 10 and 11.

Sand, nearly level.

Soil, loam and gravelly;
1st and 2nd rate.Timber, mesquite, some palo-
verde, palo fierro and cottonwood;
undergrowth, mesquite and
arrow-wood.

Dense undergrowth 47.50 chs.

Thence in sec. 11.

Through dense undergrowth.
N. 8° E., 14.80 chs; Bank 4 ft. high
To the meander cr. of frac.
secs. 2 and 11.Sand, level; subject to overflow
1 to 3 ft. deep

Soil, alluvial; 1st rate.

R. 23W. - continued.

Timber, willow and cottonwood
saplings and brush.

Dense undergrowth, 14.80 chs.

Thence in sec. 2

Through dense undergrowth
N. $1\frac{1}{2}$ E., 80.00 chs. Along bank 3 ft
high. At 33.00 chs. mouth of
slough 100 ch. wide, bears up) N.
45° E. At 52.00 chs. mouth of slough
100 ch. wide, bears up) N. 75° E.

At said 80.00 chs. The meander
cor. of secs. 2 and 35 on the
N. bdy. of Tp.

Land level; and subject to
overflow, 2 to 4 ft. deep
Soil, alluvial; 1st-rate.

Timber, willow, and cottonwood

meanders. T. 1 N., R. 23 W.

Saplings and brush

Dense undergrowth 80.00chs.

May 14, 1902.

General Description

This fract. Tp. is nearly level.

The eastern part is gravelly mesa; 2nd rate soil; cut with many ravines or washes, in which grow palo verde and palo fierro.

The western part is river bottom land; 1st rate soil, densely covered with mesquite, torneo, cottonwood and willow; and arrow-wood brush.

Watered by the Colorado

R. 23 W.

River, which is the N. W.
boundary of this fractional
township, and from which
water has been diverted,
through canal for irrigating
on land located as
Desert Land Claims.

John A. Barry.

U. S. Deputy Surveyor.

For final oath see Quibs. and
Meaders T. 1 S. R. 24 W.

FROM DEPUTY'S LETTER,

DATED FEB. 29.1904.

As to observations on Polaris, I am not familiar with the rule stated by you requiring observations to be made on Polaris" on every clear night". In the locality where this work was done all of the nights are clear, and it would be necessary to make observations on Polaris under such rule every night. I have been unable to find such rule stated in the Manual furnished me and which I used on the survey, and in making up my notes; which manual is dated June 30th, 1894.

The survey was executed with a transit without solar attachment. In all of the work observations were made on Polaris and record of most of these made in the notes on exterior lines. It did not seem necessary in the subdivisional work because it was all done from exterior boundaries which I myself had just established and in which my own monuments were still fresh and reliable. I did at frequent intervals, however, while engaged on the subdivisional work make observations on Polaris, to make a certainty against errors; and the fact that neither of the Inspectors who have been upon the ground so far has I have heard has found any fault with the alignment, shows that it was carefully done. John A. Barry,

BOOK 1147

Office of U. S. Surveyor General,
Phoenix, Arizona.

Nov. 3-1903

The foregoing field notes of the survey of the Subdivisions of Twp. 1 North, Range 23 West.

Gila and Salt River Base and Meridian, Arizona,

executed by John A. Barry

U. S. Deputy Surveyor, under Contract No. 84

dated July 13-1901, having been

critically examined, the necessary corrections

and explanation made, the said field

notes and surveys they describe are hereby

approved.

Frank A. Lyzell

U. S. Surveyor General

for the District of Arizona.