

13

Book

Recd June 6-1893

Sent to G.L.O. 3-4/93.

Digitized  
Placed

BOOK 1218

No. 1218

Approved. April 27-1893

4-671

BOOK 1218

1218

FIELD NOTES

GENERAL LAND OFFICE

of the

SUBDIVISIONS

T. 6. S. R. 6. W.

by Lewis. Wattle

under Contract No. 32

Dated May 26 1892

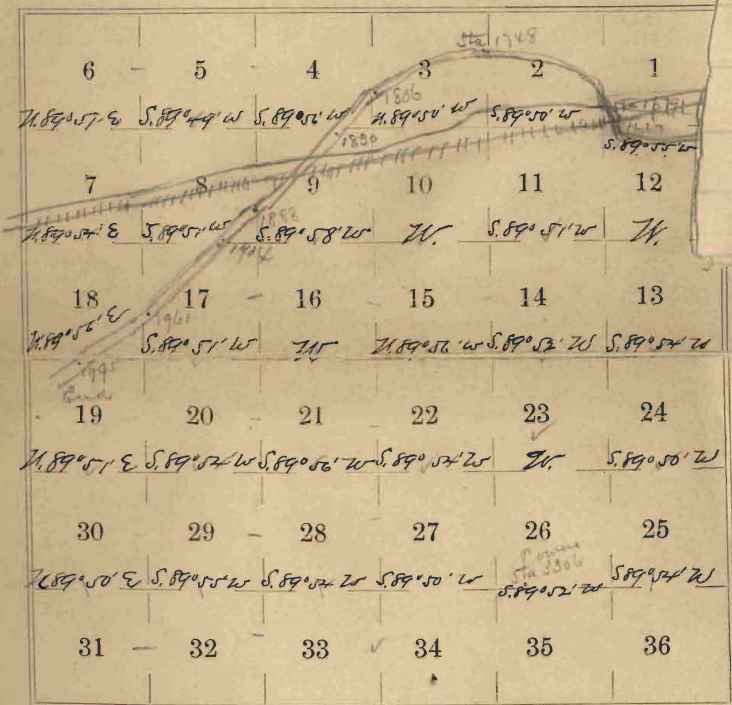
Survey Commenced, Vol. 23 1/2

Completed Vol 27 1/2

BOOK 1218

(4-674.)

Township 6 S. R. 6. W.



(11921-10 M.)

6-388

S 89° 58' E

No. 1218

BOOK 1218

1A

Field Notes  
of the  
Survey of the Subdivision  
Lines of  
T. 6. S. R. 6 W  
of the  
Gila and Salt River  
Base and Meridian  
Territory of Arizona  
as surveyed by  
Lewis Wolfley  
U. S. Deputy Surveyor

under his Contract No. 22  
dated May 26<sup>th</sup> 1892

Survey commenced 23 Nov 1892  
" completed 27 " "

Index for

BOOK 1218

BOOK 1219

(1-674.)

Township 6. 0

R. 6 West

1B

6	98	5	72	4	52	3	54	2	17	1
97		75		70		50		33		15
7	94	8	67	9	79	10	51	11	13	12
92		90		66		47		30		12
18	88	17	64	16	46	15	28	14	10	13
86		85		63		44		27		9
19	83	20	61	21	48	22	25	23	7	24
82		80		60		41		24		5
30	79	29	58	28	40	27	22	26	4	25
77		76		56		38		21		2
31	74	32	54	33	36	34	19	35	1	36

## Subdivisions T. 6. S. R. 6. W.

chains Beginning at the corner  
to Secs 25, 26, 35 and 36. on  
the S. side of the T. 6. W.

From  
N. 0° 11' W. bet. Secs 35 & 36

79.12° 12' E.

40.00 Set a post 3 ft. long 3 ins.  
square with marked  
stone 12 ins. in the ground  
for 1/4 Sec. cor, marked 1 & 1  
on W. face, dug pits 18x18x12  
ins. N. and S. of post 5 1/2 ft  
dist. and raised a mound  
of earth 1 1/2 ft. high 3 1/2 ft  
base around post

80.00 Set a post 4 ft. long 4 ins.  
square with marked stone  
12 ins. in the ground for  
cor. to Secs 25, 26, 35 & 36.

## Subdivisions Sp 6.

Chains marked

T 6. 1. S 25. on N.E.

R 6. W. S 36. on S.E.

S 35. on S.W. end

S 26. on N.W. faces with  
 1 notch on N. end, 1 notch  
 on E. edges, dug pits 18  
 x 18 x 12 ins. in each sec  
 5 1/2 ft. dist. and raised a  
 mound of earth 2 ft. high  
 4 1/2 ft. base around foot  
 Land level mesa  
 Soil 1<sup>st</sup>/<sub>11</sub> rate  
 Scattering mesquite

---

S. 89° 58' E. on a random  
 line bet. Secs 25 + 36.

V.A. 12° 06' E

South Range 6 West.

BOOK 1218

3

Chains

40.00 Set temporary  $\frac{1}{4}$  Sec. cor.  
 80.15 Intersect the E. Bdy. of the  
 Twp at 18 Mo. S. of cor. to  
 Secs 25, 30, 31 + 36. Which is a post  
<sup>firmly set and</sup> <sup>firmly</sup> <sup>marked as described</sup>  
<sup>in the</sup> <sup>original</sup> <sup>survey</sup> <sup>by the U.S.</sup>  
 Hence ~~run~~  
 $089^{\circ}54'W.$  on a true line  
 bet. Secs 25 + 36.

$79.12^{\circ}06'E.$

40.08 Set a post 0 ft. long in  
 square with marked stone  
 12 ins. in the ground for  
 $\frac{1}{4}$  Sec. cor. marked  $\frac{1}{4}$  S  
 on N. face, dug pits 18x18  
 x 12 ins. E and W. of post  
 5  $\frac{1}{2}$  ft. dist. and raised a  
 mound of earth 1  $\frac{1}{2}$  ft. high  
 3  $\frac{1}{2}$  ft. base around post  
 80.15 The cor. to Secs 25, 26, 35 + 36

## Subdivisions Sp. 6.

Chains Land calling Malpais  
Soil 2<sup>nd</sup> rate  
Some Malpais gravel

---

N 0° 1' W. bet. Secs 25 + 26.

Va. 12° 06' E

40.00 Set a post 3 ft. long  
3 ins. square with marked  
stone 12 ins. in the ground  
for "4. Sec. cor. marked "4  
S. on W. face, dug pits 18  
x 15 x 12 ins. 2 ft. S. of  
post 5 1/2 ft. dist. and raised  
a mound of earth 1 1/2 ft  
high 3 1/2 ft. base around  
post.

80.00 Set a post 4 ft. long  
4 ins. square with marked



## South Range 6. West.

Chain stone 12 ins. in the ground  
for cor. to Secs 23, 24, 25 & 26  
marked

T. 6. S. 24. on N. E.

R. 6. W. 25. on S. E.

S. 26. on S. W. end

S. 23. on N. W. face with 2  
notches on S. end 1 notch  
on E. edges, dug pits 18  
 $\times$  18  $\times$  12 ins. in each Sec.  $5\frac{1}{2}$   
ft. dist. and raised a mound  
of earth 2 ft. high  $4\frac{1}{2}$  ft  
base around post  
Land nearly level  
Soil 1<sup>st</sup> rate

N  $89^{\circ}54'$  E. on a random  
line bet. Secs 24 & 25

6

BOOK 1218

## Subdivisions Sp. 6.

Chains

Va.  $12^{\circ} 15' E$ .40.00 Set temporary  $1/4$  Sec. cor

50.10 Intersect the E. Bdy.

of the Tr. at 9. lks. S. of  
 Cor. to Secs 19, 24, 20 & 30  
 a post set and mapped as described in the  
 field notes furnished by S. Es.  
 Thence ~~run~~

S  $89^{\circ} 50' W$ . on a true  
 line bet. Secs 24 & 25

Va  $12^{\circ} 15' E$ .

40.05 Set a post 3 ft. long 3  
 ins. square with marked  
 stone 12 ins. in the ground  
 for  $1/4$  Sec. cor. marked  
 $1/4$  D. on N. face, dug pits  
 $18 \times 18 \times 12$  ins. E. End W of  
 post  $5 \frac{1}{2}$  ft. dist. and  
 raised a mound of earth  
 $1 \frac{1}{2}$  ft. high  $5 \frac{1}{2}$  ft. base  
 around post

## South Range 6. West.

Chains

80.10

The cor. to Secs 23, 24, 25 & 26  
 Land slightly rolling  
 Soil  $1\frac{1}{4}$  + 2<sup>and</sup> $\frac{1}{4}$  rate  
 Governor Course Canal  
 Station No. 3201. on E. Bay  
 at 34 chs North from Cor. to  
 Secs 25, 30, 31 & 36.

---

No<sup>o</sup> 1' W. bet. Secs 23 + 24Va.  $12^{\circ}15'E$ .

40.00

Descending gradually  
 Set a post 3 ft. long 3 ins.  
 square with marked stone  
 12 ins. in the ground for  $\frac{1}{4}$   
 Sec. cor. marked  $\frac{1}{4}$  S. & W.  
 face, dug pits 18x18x12 ins  
 N. End C. of post  $5\frac{1}{2}$  ft. dist

8

BOOK 1218

## Subdivisions of 6.

Chains and raised a mound  
of earth  $1\frac{1}{2}$  ft. high  $5\frac{1}{2}$   
ft. base around post  
80.00 Set a post 4 ft long 4  
ins. square with marked  
stone 12 ins. in the ground  
for lev. to Secs 13, 14, 23 & 24  
marked

T. 1. S 13. on N.E.

R 6. W. S. 24. on S.E.

S 23. on S.W. end

S 14. on N.W. faces with  
3 notches on S. end / notch  
on E. edges. dug pits  $15 \times 15$   
 $\times 12$  ins. in each Sec.  $5\frac{1}{2}$   
ft. dist. and raised a  
mound of earth 2 ft. high  
 $4\frac{1}{2}$  ft. base around post  
and nearly level

## South Range 6 West.

Chains

Soil 1<sup>st</sup> rate

Scattering mesquite

N 89° 50' E. on a random  
line bet. Secs. 13 & 24.

Va. 12° 03' E.

40.00 Set temporary 1/4 Sec. cor

80.00 Intersect the E. Bdy. of  
the Tr at 9 chs. N. of corner  
to Secs 13, 18, 19 & 24 <sup>which is a</sup>  
<sup>post set</sup>  
<sup>marked as</sup>  
described in the field notes furnished  
by the Surveyor General  
Hence Run

S. 89° 54' W. on a tree line  
bet. Secs 13 and 24.

Va. 12° 03' E.

40.05 Set a post 3 ft. long 3 ins  
square with marked stone  
12 ins. in the ground for 1/4  
Sec. cor. marked 1/4. on N. face

## Subdivisions of 6.

Chains dug pits  $18 \times 18 \times 12$  ins.  
 E. and W. of post  $5\frac{1}{2}$  ft. dist.  
 and raised a mound of  
 earth  $1\frac{1}{2}$  ft. high  $3\frac{1}{2}$  ft. base  
 around post

50.10 The cor. to Secs 13, 14, 23 & 24  
 Land slightly rolling  
 Soil  $1\frac{1}{4}$  rate  
 Scattering mesquite

---

$N0^{\circ}1'W$ . bet. Secs 13 + 14

$Va. 12^{\circ}03'E$

Descending very gradually  
 40.00 Set a post 3 ft. long 3 ins  
 square with marked stone  
 $12$  ins. in the ground for  $14$   
 Sec. cor. marked  $14$  S. or W. face  
 dug pits  $18 \times 18 \times 12$  ins. N.E.C.

## South Range 6. West.

Chain of post  $5\frac{1}{2}$  ft. dist. and raised  
a mound of earth  $1\frac{1}{2}$  ft.  
high  $3\frac{1}{2}$  ft. base around post

80.00

Set a post 4 ft. long 4 ins.  
square with marked stone  
12 ins. in the ground for cor-  
to Secs 11, 12, 13 + 14. marked  
T. 6. S. 12. on N.E.

Q 6. W. S 13. on S.E.

S 14. on S.W. end

S 11. on N.W. faces with 4  
notches on N. end 1 notch on E.

edges. dug pits  $15 \times 15 \times 12$  ins  
in each Sec.  $5\frac{1}{2}$  ft. dist. and  
raised a mound of earth  
2 ft. high  $4\frac{1}{2}$  ft. base around <sup>post</sup>

Land nearly level mesa

Soil  $1\frac{2}{3}$  rate

Scattering Mesquite

## Subdivisions of 6.

Chain  $N 79^{\circ} 54' E$ . on a random  
line bet. Secs 12 & 13  
 $Va 12^{\circ} E$ .

40.00 Set temporary  $1/4$  Sec. Cor

79.95 Intersect the E. Bdy.  
of the Tpc at 14 lks.

N. of the Cor. to Secs  
7, 16, 13 & 18 <sup>which is a post set</sup>  
<sup>marked as described in</sup>  
<sup>the field notes furnished by the Surveyor General</sup>  
Thence I run

West on a true line  
bet. Secs 12 & 13.

$Va. 12^{\circ} E$ .

1535 Wash 20 lks. wide course N

39.98 Set a post 3 ft. long  
3 ins. square with marked  
stone 12 ins. in the ground  
for  $1/4$  Sec. Cor. marked  
 $1/4$  S. on N. face, dug  
pits  $18 \times 18 \times 12$  ins. E & W



## South Range 6 West.

Chain of post  $5\frac{1}{2}$  ft. dist. and  
 raised a mound of  
 earth  $1\frac{1}{2}$  ft. high  $5\frac{1}{2}$   
 ft. base around post

79.95 The cor. to Secs 11, 12, 13 + 14

Land slightly rolling  
 Soil  $\frac{1}{2}$  rate  
 Scattering Malpais

---

$70^{\circ}1'W$ . bet. Secs 11 + 12

$99.12^{\circ}S$  E.

40.00 Set a post 5 ft. long 3  
 ins. square with marked  
 stone 12 ins. in the ground  
 for  $1\frac{1}{4}$  Sec. cor. marked  
 $1\frac{1}{4}$  P. on W. face, dug pits  
 $18 \times 18 \times 12$  ins. N. and S. of  
 post  $5\frac{1}{2}$  ft. dist. and raised

## Subdivisions of 6.

chain a mound of earth  
 $1\frac{1}{2}$  ft. high  $3\frac{1}{2}$  ft. base  
 around post

80.00 Set a post 4 ft. long  
 4 ins. square with  
 marked stone 12 ins.  
 in the ground for cor  
 to Secs 1, 2, 11 + 12 marked  
 T. 6. S. 1. on N. E.

R. 6. W. 12. on S. E.

S 11. on S. W. end

S 2. on N. W. faces with  
 5 notches on S. end 1 notch  
 on E. edges. dug pits  $18 \times 18$   
 $\times 12$  ins. in each Sec.  $5\frac{1}{2}$   
 ft. dist. and raised a  
 mound of earth 2 ft. high  
 $4\frac{1}{2}$  ft. base around post  
 Land mesa

South Range 6 West.

chains

Soil 1<sup>st</sup> rate  
 Scattering Mesquite

---

East on a random line  
 bet. Secs 1 and 12

$Ta. 12^{\circ} 15' E.$

40.00 Set temporary 1/4 Sec. cor

79.95 Intersect the E. Bdy. of  
 the Tp at 14. lks. S. of the  
 cor. to Secs 1, 6, 7 & 12 <sup>x which is</sup>  
 as described in the field notes <sup>as post set &</sup>  
 furnished by the Surveyor General <sup>marked</sup>  
 N. N. W.

$S. 89^{\circ} 55' W.$  on a tree line  
 bet. Secs 1 and 12.

$Ta 12^{\circ} 15' E$

12.00 Wash 50 lks. wide course N

39.98 Set a post 3 ft. long 3 ins.  
 square with marked stone  
 12 ins. in the ground for

## Subdivisions of 6.

- Chains 114. Sec cor. marked 114  
 O. on N. face, aug pits  
 15x18x12 ins. E. of W. of  
 post  $5\frac{1}{2}$  ft. dist. and raised  
 a mound of earth  $1\frac{1}{2}$   
 ft. high  $0\frac{1}{2}$  ft. base around  
 post.
- 74.00 Enter Right of way of canal  
 of The Gild Bend. Reservoir  
 and Irrigation Company
- 75.30 Center of right of way  
 center line of canal course  
 N  $10^{\circ}$  W. Station no. 1667.  
 bears N  $10^{\circ}$  W. 45.0 kts
- 76.20 Leave right of way
- 79.95 The cor. to Secs. 1, 2, 11 & 12  
 Land slightly rolling  
 Soil  $1\frac{1}{2}$  rate

## South Range 6 West.

Chains N 6° 1' W. bet. Secs 1 & 2

Va. 12° 15' E

0.30 D. P. R. R. brs. S. 70° 30' W.

15.00 Enter Right of way of the  
Gila Bend. Reservoir and  
Irrigation Company Canal.

17.90 Center of right of way,  
center of Canal Course N. 14° W  
Station 1679. at this point

20.72 Wagon Road brs E & W.

21.56 Leave right of way

40.00 Set a post 3 ft. long 3 ins.  
square with marked stone  
12 ins in the ground for  
1/4 Sec. cor. marked 1/4 W. on  
W. face, dug pits 18 x 18 x 12  
ins. N. and S. of post 5 1/2 ft  
dist. and raised a mound  
of earth 1 1/2 ft. high 5 1/2 ft. base

## Subdivisions of 6

Chain around frost

79.40 Intersect the 1<sup>st</sup> Stand  
 parallel South at a  
 point <sup>11.470 chs.</sup> N. 79° 33' E. from  
 the Standard lerr. to  
 Secs 35 + 36, T. 5. S. R. 6. W.  
 at which point I set  
 a frost 4 ft. long 4 ins.  
 square with marked  
 stone 12 ins. in the ground  
 for closing lerr. to Secs  
 1 and 2. Marked  
 b. b. T. 6 S. R. 6. W. o. l. o.  
 D. 1. on E. End  
 D. 2. on W. faces with 1 notches  
 on E. and 5 notches on W  
 faces. dug pits 18 x 18 x 12  
 ins. S. E. End W. of frost 5 1/2  
 ft. dist. and raised a

## South Range 6 West

Chains mound of earth 2 ft. high  
 4" 1/2 ft. base around post  
 Land level mesa  
 Soil 1<sup>st</sup>/<sub>11</sub> rate  
 Nov 23 - 1892

From the cor. to Secs 2, 3,  
 34, and 35, on the S. Bay, of  
 the Twp.

I run

No<sup>o</sup> 1' W. bet. Secs 34 & 35.

Ta. 12° 21' E.

40.00 Set a post 3 ft. long 3  
 ins. square with marked  
 stone 12 ins. in the ground  
 for 1/4 Sec. cor. marked 1/4  
 S. on W. face, aug fits 18x  
 18x22 ins. N. End S. of post  
 5 1/2 ft. dist. and raised a

20

## Subdivisions Op. 6

Chain mound of earth  $1\frac{1}{2}$  ft  
 high  $3\frac{1}{2}$  ft. base around <sup>post</sup>  
 50.00 Set a post 4 ft. long 4  
 ins. square with marked  
 stone 12 ins. in the ground  
 for cor. to Secs 26 27 34 & 35  
 marked

T. 6. D. 1 26. on N. E.

R 6. W. D. 35. on S. E.

D 34. on O. W. End

D 27. on N. W. faces with  
 1 notch out and 2 notches  
 on E. edges. dug pits  $18 \times 18$   
 $1\frac{1}{2}$  ins. in each Sec.  $5\frac{1}{2}$   
 ft. dist. and raised a mound  
 of earth 2 ft. high  $4\frac{1}{2}$  ft  
 base around post

Land level mesa

Soil  $1\frac{1}{4}$  rate



## South Range 6 West.

chain D.  $89^{\circ}58'E$ . on a random  
line bet. Secs 26 + 35

$99.12^{\circ}15'E$ .

40.00 Set temporary  $1/4$  Sec. cor

80.10 Intersect the N End l. line  
at. 23. lks. South of the cor  
to Secs 25. 26. 35 and 36

Thence I run

D.  $89^{\circ}52'W$ . on a true line  
bet. Secs 26 + 35.

$99.12^{\circ}15'E$

40.05 Set a post 3 ft. long 2 ins.  
square with marked stone  
12 ins. in the ground for  
 $1/4$  Sec. cor. marked  $1/4$  S. on  
N. face. dug pits  $18 \times 18 \times 12$   
ins. E. End W. of post  $5 \frac{1}{2}$   
ft. dist. and raised a mound  
of earth  $1 \frac{1}{2}$  ft. high  $5 \frac{1}{2}$  ft.

## Subdivisions of 6.

Chain base around frost

63.00 Station No. 3506. of Governor  
Power canal 1 ch north80.10 The cor. to Secs 26, 27, 24 & 35  
Land level mesa  
Soil 1<sup>st</sup> rateN<sup>o</sup> 1' W. bet. Secs 26 & 27V<sup>a</sup> 12° 15' E.40.00 Set a frost 3 ft. long 3 ins.  
square with marked stone  
12 ins. in the ground for  
1/4 Sec. cor. marked 1/4 on  
W. face, dug pits 18x18x12  
ins. N. end E. of frost 5 1/2 ft  
dist. and raised a mound  
of earth 1 1/2 ft. high 3 1/2 ft  
base around frost

South Range West.

Chains

T.O.O.O

Set a post 4 ft. long 4  
 ins. square with marked  
 stone 12 ins. in the ground  
 for cor. to Secs 22, 23, 26 & 27  
 marked

T. 6. S. R. 23. on N. E.

R. 6. W. P. 26. on N. E.

S. 27. on S. W. Quad

S. 22. on N. W. faces with 2  
 notches on N. and E. edges  
 dug pits 18 x 18 x 12 ins. in  
 each Sec.  $5\frac{1}{2}$  ft. dist. and  
 raised a mound of earth  
 2 ft. high  $4\frac{1}{2}$  ft. base around <sup>foot</sup>

Land level mesa

Soil, 1/4 rate

## Subdivisions Tp 6.

Chains  $N 89^{\circ} 52' E$ . on a random  
line bet. Secs 23 + 26

$74.11^{\circ} 57' E$

40.00 Set temporary  $1/4$  Sec. cor

80.00 Intersect the N and S.  
line at 18 lks. N. of the  
Cor. to Secs 23, 24, 25 + 26

Thence I run

West on a true line bet  
Secs 23 + 26.

$74.11^{\circ} 57' E$

40.00 Set a post 3 ft. long 3  
ins. square with marked  
stone 12 ins in the ground  
for  $1/4$  Sec. cor. marked  $1/4$  S  
on N. face dug pits 18 x 18  
x 12 ins. E and W of post  $5\frac{1}{2}$   
ft. dist. and raised a  
mound of earth  $1\frac{1}{2}$  ft high

## South Range 6 West.

Chain 3 $\frac{1}{2}$  ft. base around post  
 80.00 The cor. to Secs 22, 23, 26 & 27  
 Land mesa  
 Soil 1 $\frac{1}{4}$  rate

---

N0°1'W. bet. Secs 22 & 23  
 Tq. 17°51'E

40.00 Set a post 3 ft. long 3 ins.  
 square with marked  
 stone 12 ins. in the ground  
 for N. E. cor. marked 14  
 N. on W. face, dug pits 18x18  
 x 12 ins. N. End of post 5 $\frac{1}{2}$   
 ft. dist. and raised a mound  
 of earth 1 $\frac{1}{2}$  ft. high 3 $\frac{1}{2}$  ft.  
 base around post

80.00 Set a post 4 ft. long 4 ins.  
 square with marked stone

26

BOOK 1218

## Subdivisions of 6.

Chains 12 ins. in the ground  
for corr. to Secs 14, 15, 22 & 23  
marked

T. 6. S. 14. on N. E.

R 6. W. 23 on S. E.

S 22. on S. W. End

S 15. on N. W. faces with  
3 notches on S. End 2 notches  
on E. edges dug pits 18x18  
x 12 ins. in each Sec.  $5\frac{1}{2}$  ft.  
dist. And raised a mound  
of earth 2 ft. high  $4\frac{1}{2}$  ft  
base around post

Land level mesa

Soil 1<sup>st</sup> rate

Scattering mesquite brush

---

## South Range 6 West.

Chains East on a random line  
bet. Secs 14 and 23

Pa.  $12^{\circ} 33' E$ .

40.00 Set temporary  $\frac{1}{4}$  Sec. cor

80.00 Intersect the N. and S. line  
at 18 chs. S. of the cor. to  
Secs 13, 14, 23 and 24

Thence I run

$079^{\circ} 52' W$ . on a true line  
bet. Secs 14 and 23

Pa.  $12^{\circ} 33' E$ .

40.00 Set a post 3 ft. long 3 ins.  
square with marked  
stone 12 ins. in the ground  
for  $\frac{1}{4}$  Sec. cor. marked  $\frac{1}{4}$   
D. on N. face, dug pits  $18 \times 18$   
 $\times 12$  ins. E and W. of post  $5\frac{1}{2}$   
ft. dist. and raised a mound  
of earth  $1\frac{1}{2}$  ft. high  $5\frac{1}{2}$  ft.

## 28 Subdivisions of 6.

Chain base around frost

80.00 The cor. to Secs 14, 15, 22 &amp; 23

Land level mesa

Soil 1<sup>st</sup> rate

70° 1' W. bet. Secs 14 &amp; 15

79 12° 35' E

40.00 Set a frost 3 ft. long 3 ins.  
square with marked stone  
12 ins. in the ground for 1/4  
Sec. cor marked 1/4 S. on  
W. face, dug pits 15 x 15 x 12  
ins. n. and S. of frost 5 1/2 ft.  
dist. and raised a mound  
of earth 1 1/2 ft. high 3 1/2 ft  
base around frost

80.00 Set a frost 4 ft. long 4  
ins. square with marked



South Range 6 West 29

Chain stone 12 ins. in the ground  
for loc. to Secs 10, 11, 14 & 15  
marked

T. 6. N. S. 11. on N.E.

R. 6. W. D. 1, 4. on D.E.

S 15. on D.W. end

S 10. on N.W. faces with 4  
notches on D. and 2 notches

on E. edges, dug pits 8x15x  
12 ins in each Sec. 5 1/2 ft.

dist. and raised a mound  
of earth 2 ft. high 4 1/2 ft  
base around foot

Land mesa

Soil 1<sup>st</sup> rate

Scattering mesquite brush

N 89° 52' E. on a random line

## Subdivisions Sp. 6.

Chains bet. Secs 11 &amp; 14

Va.  $12^{\circ} 15' E$ 40.00 Set temporary  $1/4$  Sec. cor80.00 Intersect the n and s. line  
at 2 cks. S. of Cor. to Secs  
11, 12, 13 and 14

Thence I run

S.  $89^{\circ} 57' W$ . on a true line  
bet. Secs 11 & 14Va.  $12^{\circ} 15' E$ 40.00 Set a post 3 ft. long 3  
ins. square with marked  
stone 12 ins. in the ground  
for  $1/4$  Sec. cor. <sup>marked  $1/4$  s. on n. face</sup> dug pit 18 x  
18 x 12 ins. E. and W. of post  
 $5\frac{1}{2}$  ft. dist. and raised a  
mound of earth  $1\frac{1}{2}$  ft  
high  $3\frac{1}{2}$  ft. base around  
post

South Range 6 West.

Chains

80.00

The cor. to Secs 10, 11, 14 & 15  
Land mesa  
Soil 1<sup>st</sup> date

---

N0° 1' W. bet. Secs 10 & 11  
Ta. 12° 15' E.

40.00

Set a post 3 ft. long 3  
ins. square with marked  
stone 12 ins. in the  
ground for N4. Sec. cor.  
marked 1/4 P. on W. face  
dug pits 15 x 15 x 12 ins. N  
end P. of post 5 1/2 ft. dist  
and raised a mound  
of earth 1 1/2 ft. high 5 1/2  
ft. base around post

68.15

P. P. R. R. brs. S. 80° 30' West

## Subdivisions of 6.

Chains

80.00 Set a post 4 ft. long 4  
 ins. square with marked  
 stone 12 ins. in the ground  
 for cor. to Secs 2, 3, 10 & 11  
 marked

T 6. S. S 2. on N. E.

R 6. W. S 11 on S. E.

S 10. on S. W. end

S 3 on N. W. faces with 5  
 notches on S. end 2 notches  
 on E. edges, dug pits 18x  
 18x12 ins. in each Sec. 5 1/2  
 ft. dist. and raised a  
 mound of earth 2 ft. high  
 4 1/2 ft. base around post  
 Land level mesa

Soil 1<sup>st</sup> rate

Scattering Mesquite trees

## South Range 6 West.

Chain  $N 89^{\circ} 57' E$  on a random  
line bet Secs 2 + 11

$\Delta a. 12^{\circ} 36' E$

40.00 Set temporary  $1/4$  Sec. cor

80.00 Intersect the N and S. line  
at 2 E. S. of the cor. to  
Secs 1, 2, 11 + 12

Hence I run

$S 89^{\circ} 58' W$  on a true line  
bet. Secs. 2 + 11

$\Delta a. 12^{\circ} 36' E$

3.00 P. P. R. R. brs  $S. 88^{\circ} 30' W$

40.00 Set a post 3 ft. long 3 ins.  
square with marked  
stone 12 ins. in the ground  
for  $1/4$  Sec. cor. marked  $1/4$   
on N. face, dug pits  $18 \times 18 \times$   
12 ins. E. and W. of post  $5 \frac{1}{2}$   
ft. dist. and raised a mound

## Subdivisions of 6.

Chain of earth  $1\frac{1}{2}$  ft. high  $3\frac{1}{2}$  ft. base around post

80.00 The cor. to Secs 2, 3, 10 + 11

Land level mesa

Soil 1<sup>st</sup> rate

Scattering mesquite <sup>brush</sup>

---

No 0' West. bet. Sec. 2 + 3

$79, 12036^{\circ}E$

4.75 Wagon Road bet. Easterly & Westerly

40.00 Set a post 3 ft. long 3 ins square with marked stone 12 ins. in the ground for  $\frac{1}{4}$  Sec. cor. marked  $\frac{1}{4}$  S. on W face, dug pits  $18 \times 18 \times 12$  ins N. and S. of post  $5\frac{1}{2}$  ft. dist. and raised a mound of earth  $1\frac{1}{2}$  ft. high  $3\frac{1}{2}$  ft. base

## South Range 6 West

Chains around post

- 60.50 Enter Right of way of the  
Sila Bend Reservoir and  
Irrigation Company
- 61.30 Center of right of way  
center of line of canal course  
westerly  
Station No. 1748. Co. West  
25. LKs
- 62.10 Leave Right of way
- 78.90 Intersect the  $1\frac{1}{4}$  Standard  
Parallel South at a point  
11.30 chs. N.  $89^{\circ} 33' E$ . from the  
Standard cor. to Secs 34 & 35  
D. S. R. 6. W. at which  
point I set a post 4  
ft. long 4 in. square with  
marked stone 12 in. in  
the ground for closing cor

## Subdivisions of 6.

Chains to Secs 2 + 3, marked

C. C. T. 6. S. R. 6 W. on S.

S 2. on E. End

S 3. on W. faces, with 2 notches  
on E. End 4 notches on W

faces, aug pits 15 x 18 x 12

ins. S. E. End W. of post 5 1/2

ft. dist. and raised a mound  
of earth 2 ft. high 4 1/2 ft  
base around post

Land level mesa

Soil 1 2/3 rate

Scattering mesquit trees

Nov 24 - 1892

From the Cor. to Secs 3, 4  
33<sup>rd</sup> and 34<sup>th</sup> on the S. Bay of  
the T<sup>p</sup>  
I run



## South Range West.

Chains N0°2'W. bet. Secs 33<sup>rd</sup> & 34<sup>th</sup>

V 912°12'E

40.00 Set a post 3 ft. long 3 ins square with marked stone 12 ins. in the ground for 114 Sec. cor, marked 14 S. on W. face, dug pits 15 x 18 x 12 ins. N. end P. of post 17 1/2 ft. dist. and raised a mound of earth 1 1/2 ft high 5 1/2 ft. base around post

80.00 Set a post 4 ft. long 4 ins. square with marked stone 12 ins. in the ground for cor. to Secs 27, 28, 33 & 34 marked

T. 6. S. 27. on N. E.

R. 6. W. 34. on S. E.

## Subdivisions of 6.

Chains S 33. on S.W

and S 28. on N.W. faces with  
 1 notch on S. end & notches  
 on E. edges. dug pits 17x17  
 x 12 ins. in each Sec. 5 $\frac{1}{2}$   
 ft. dist and raised a  
 mound of earth 2 ft  
 high  $4\frac{1}{2}$  ft. base around  
 post.

Land level mesa  
 Soil 1 $\frac{1}{2}$  rate

---

S 89° 58' E. on a random  
 line bet. Secs 27 & 34

S 12° 15' E

40.00 Set Temporary 1/4 Sec. cor  
 80.00 Intersect The N end S. line  
 at 28. lks. S. of The cor. To

## South Range 6 West.

Chain Secs 26. 27. 34 + 35

Thence I run

S 89° 50' W. bet. Secs 27 + 34

79.12' 15" E.

40.00 Set a post 3 ft. long  
3 ins. square with marked  
stone 12 ins. in the ground  
for 1/4 Sec. cor, marked 1/4  
S. or N. face, dug pits 15 x 15  
12 ins. E. end W. of post 5 1/2  
ft. dist. End raised a  
mound of earth 1 1/2 ft  
high 3 1/2 ft. base around  
post

80.00 The lev. to Secs 27. 28. 33 + 34

Land level mesa

Soil 1 <sup>or</sup>/<sub>10</sub> rate

40

BOOK 1218

## Subdivisions of 6.

Chain No 2 W. bet. Secs 27 &amp; 28

T9. 12° 15' E

40.00 Set a post 3 ft. long 3  
 ins. square with marked  
 stone 12 ins. in the ground  
 for 1/4 Sec. cor. marked 1/4  
 P. on W. face, dug pits 18 x 18  
 x 12 ins. N. End P. of post 5 1/2  
 ft. dist. and raised a  
 mound of earth 1 1/2 ft  
 high 3 1/2 ft. base around <sup>post</sup>

80.00 Set a post 4 ft. long 4  
 ins. square with marked  
 stone 12 ins. in the ground  
 for cor. to Secs 21, 22, 27 & 28  
 marked

T6. S. S 22. on N. E.

R6 W. S 27. on S. E.

S 28. on N. W. end

## South Range 6 West.

chain S. 21. on N.W. faces with  
 2 notches on S. end 3 notches  
 on E. edges, dug pits 18x18  
 x12 ins. in each Sec. 5 1/2  
 ft. dist. and raised a mound  
 of earth 2 ft. high 4 1/2  
 ft. base around post  
 Land level mesa  
 Soil 1<sup>st</sup> rate

---

N 89° 50' E on a random  
 line bet. Secs 22 + 27  
 Sta. 11° 57' E.

40.00 Set temporary 1/4 Sec. cor  
 Sta. 20 Intersect the N. and S.  
 line at 9 exs. N. of cor to  
 Secs 22. 23. 26 + 27  
 Thence I run

49

BOOK 1218

## Subdivisions of 6

Chain S. 89° 54' W on a true line  
bet. Secs 22 + 27

of a 11° 57' E.

40.10 Set a post 3 ft. long 3  
ins. square with marked  
stone 12 ins. in the ground  
for 114. Sec. cor. marked  
114. S. on N. face, dug pits  
18 x 18 x 12 ins. E. and W. of  
post 5 1/2 ft. dist. and raised  
a mound of earth 1 1/2 ft  
high 3 1/2 ft. base around  
post

80.20 The lev. to Secs 21, 22, 27 + 28  
Land level mesa  
Soil 1<sup>st</sup> rate

---

## South Range West. 437

Chain N<sup>0</sup>°2'W. bet. Secs 21 & 22  
T<sup>9</sup>. 11° 57' E.

40.00 Set a post 3 ft. long  
ins. square with marked  
stone 12 ins. in the ground  
for 1/4 Sec. 21, marked 1/4  
S. on W. face, dug pits 18  
x 18 x 12 ins. N. End S. of post  
5 1/2 ft. dist. End raised a  
mound of earth 1/2 ft  
high 5 1/2 ft. base around  
post

80.00 Set a post 4 ft. long 4 ins.  
square with marked  
stone 12 ins. in the ground  
for cor. to Secs 15, 16, 21 & 22  
marked

T<sup>6</sup>. S. 15. on N. E.

R 6 W. 22. on S. E.

44

BOOK 1218

## Subdivisions of 6.

Chains S. 21. on S.W.

and S 16. on N.W. faces with  
 3 notches on S. End E. edges  
 dug pits 18x18x12 ins. in  
 each sec.  $5\frac{1}{2}$  ft. dist. and  
 raised a mound of  
 earth 2 ft. high  $4\frac{1}{2}$  ft  
 base around first  
 Land level mesa  
 Soil 1  $\frac{1}{4}$  rate

---

$N 89^{\circ} 54' E.$  on a random  
 line bet. Secs 15 and 22  
 $S 4. 12^{\circ} 18' E.$

40.00 Set temporary 1/4. Sec. cor  
 80.00 Intersect the N. and S.  
 line at 23. E.S. N. of cor  
 to Secs 14, 15, 22 + 23.



South Range 6 West.

Chains Thence I am

N 89° 56' W. on a true line  
bet. Secs 15 and 22

S 912° 18' E

40.00 Set a frost 3 ft. long 3 ins. square with marked stone 12 ins. in the ground for 14 Sec. cor. marked 14 ft. on N. face, dug pits 18x18 x 12 ins. E and W. of frost 5 1/2 ft. dist. and raised a mound of earth 1 1/2 ft. high 3 1/2 ft. base around frost

80.00 The cor. to Secs 15, 16, 21 & 22  
Land level mesa  
Soil 1/2" rate

## 46 Subdivisions of 6.

Chains  $70^{\circ}2'N$ . bet. Secs 15 & 16Sta. 12<sup>o</sup> 18<sup>e</sup>.

40.00 Set a post 3 ft. long 3  
 ins. square with marked  
 stone 12 ins. in the ground  
 for  $1/4$  Sec. cor, marked  $1/4$   
 P. on N. face, dug pits  $18 \times 18$   
 $\times 12$  ins. N. and S. of post  
 $5\frac{1}{2}$  ft. dist. and raised a  
 mound of earth  $1\frac{1}{2}$  ft  
 high  $5\frac{1}{2}$  ft. base around  
 post

80.00 Set a post 4 ft. long 4  
 ins. square with marked  
 stone 12 ins. in the ground  
 for cor. to Secs 9, 10, 15 & 16  
 marked

T 6. S. S 10. on N. E.

R 6. W. S 15. on S. E.

## South Range West

477

Chain 16. on S.W. End

19. on N.W. faces with 4  
notches on S. End 3 notches  
on E. edges, dug pits 15x15  
x12 ins. in each Sec. 5 1/2  
ft. dist. End raised a mound  
of earth 2 ft. high 4 1/2 ft  
base around post

Land level mesa

Soil 1<sup>st</sup> rate

Scattering Mesquite brush

S. 89° 56' E. on a random  
line bet. Secs 10 & 15

Va. 12° E.

HC. 00 Set temporary 1/4 Sec. cor  
70. 10 Intersect the N. and S. line  
at 9. lks. S. of cor. to Secs

## Subdivisions of 6.

Chains 10, 11, 14 &amp; 15

Thence I run  
West on a true line bet.  
Secs. 10 and 15

7d. 12° E.

40.05 Set a post 3 ft. long 3  
ins. square with marked  
stone 12 ins. in the ground  
for 14. Sec. cor. marked  
114. S. on N. face, dug pits  
18 x 18 x 12 ins. E. and W. of  
post 5 1/2 ft. dist. and  
raised a mound of earth  
1 1/2 ft. high 3 1/2 ft. base  
around post

80.10 The cor. to Secs 9, 10, 15 &amp; 16

Land level mesa

Dred. 1<sup>st</sup> rateScattering Mesquite trees

Smith Range 6 West.

Chain 110° 2' W. bet. Secs 9 & 10  
Ta. 12° E.

40.00 Set a post 3 ft. long 3  
ins. square with marked  
stone 12 ins. in the ground 84  
for 114. Sec. cor. marked 114  
on W. face, dug pits 18  
x 18 x 12 ins. 2' end S. of  
post 5 1/2 ft. dist. and  
raised a mound of  
earth 1 1/2 ft. high 5 1/2 ft  
base around post

55.15 D.P. R.R. cor. S 88° 30' W  
67.33 wagon road cor. E & W

80.00 Set a post 4 ft. long 4  
ins. square with marked  
stone 12 ins. in the ground 76  
for cor. to Secs 3, 4, 9 & 10  
marked

50

BOOK 1218

## Subdivisions of 6.

Chains T. 6. S. S. 3. on N. E.

R 6. W. S. 10. on S. E.

S 9. on S. W. end

P 4. on N. W. faces with  
5 notches on S. end & notches  
on E. edges, dug pits 18  
x 18 x 12 ins. in each sec.

5 1/2 ft. dist. and raised a  
mound of earth 2 ft  
high 4 1/2 ft. base around  
post

Land level mesa

Soil 1<sup>st</sup> rate

Scattering mesquite brush

East on a random line  
bet. Secs 3 + 10

Va. 12° 09' E

## South Range 6 West.

57 57

Chairs

40.00 Set temporary  $1/4$  Sec. cor.80.05 Intersect the N. and S. line  
at 23. lks. N. of cor. to Secs  
2, 5, 10 + 11

Thence I run

N.  $89^{\circ} 50' W.$  on a true line  
bet. Secs 3 and 10Ta.  $12^{\circ} 09' E.$ 

18.00 Wagon road brs. E. &amp; W

40.03 Set a post 3 ft. long 3 ins  
square with marked  
stone 12 ins. in the groundfor  $1/4$  Sec. cor, marked  $1/4$ P. on N. face, deep pits  $18 \times 18$   
 $\times 12$  ins. E. and W. of post $5\frac{1}{2}$  ft. dist. and raised a  
mound of earth  $1\frac{1}{2}$  ft. high  
 $3\frac{1}{2}$  ft. base around post

52

BOOK 1218

## Subdivisions of 6.

Chains

80.05 The Cor. to Secs 3, 4, 9 & 10  
 Land Level mesa  
 Soil 1<sup>st</sup> rate

---

N 0° 2' W. bet. Secs 3 & 4

V. 12° 09' E.

25.00 Enter Right of way of  
 the Gila Bend. Reservoir  
 and Irrigation Company

26.48 Center of right of way  
 center line of canal course  
 N. 36° 45' W.

Station 1806. bet. N. 36° 45' E. 70  
 lks. dist.

27.76 Leave Right of way

48.00 Set a post 5 ft. long  
 vis. square with marked



South Range 6 West.

BOOK 1218

53

57

Chain stone 12 ins. in the ground  
for 1/4 Sec. cor. marked 1/4  
P. on W. face, dug pits 18x  
18x12 ins. N. End of post  
5 1/2 ft. dist. and raised  
a mound of earth 1 1/2  
ft. high 3 1/2 ft. base around  
post

34

78.10

Intersect the 1<sup>st</sup> Standard  
Parallel South at a point  
11.38. chs. N. 89° 33' E. From the  
Stand Cor. to Secs 33 + 34  
T. 5. S. R. 6. W. at which  
point I set a post 4 ft  
long 4 ins. square with  
marked stone 12 ins. in  
The ground for blowing  
Cor. to Secs 3 + 4 marked  
T. 6. S. R. 6. W. on D.

66

d

ed

4

th

## Subdivisions To 6

Chain 03. on E. End

04. on W. faces with 3

+ notches on E. End W. faces  
dug pits  $18 \times 18 \times 12$  ins.

S.E. End W. of post  $5\frac{1}{2}$  ft.  
dist. and raised a mound  
of earth 2 ft. high  $4\frac{1}{2}$  ft.  
base around post

C. J. Drummond's house  
br. N.  $63^{\circ} 15' E$ . about 12 chs.  
dist.

Land level mesa

Soil  $1\frac{1}{4}$  rate

Scattering mesquite  
on S. half of Tricle

NOV 25-1892

From the Cor. to Secs  
45. 32 & 33. on the South

## South Range 6 West.

Chain Bay, of The Tr.

Iron

N<sup>o</sup> 2' W. bet. Secs. 32 & 33Va. 12<sup>o</sup> E.

40.00 Set a post 3 ft. long  
 3 ins. square with  
 marked stone 12 ins.  
 in the ground for 1/4 Sec  
 cor. marked 1/4 S. on W  
 face, dug pits 18x18x12  
 ins. N End of post 1/2  
 ft. dist. and raised a  
 mound of earth 1 1/2 ft  
 high 3 1/2 ft. base around  
 post

80.00 Set a post 4 ft. long  
 4 ins. square with marked  
 stone 12 ins. in the ground  
 for cor. to Secs 25, 29, 32 & 33

56

## Subdivisions of 6.

Chains marked

T6 S. S 28. on N.E.

R 6 W S. 33. on S.E.

S 32. on S.W. and

S 29. on N.W. faces with  
1 notch on S. Face 4 notcheson E. edges. dug pits  
15x18x12 ins in eachSec. 5 1/2 ft. dist. and raised  
a mound of earth 2  
ft. high 4 1/2 ft. base  
around post

Land level mesa

Soil 1<sup>st</sup> rateScattering mesquite <sup>brush</sup>D 89° 58' E. on a random  
line bet. Secs 28 + 33.

## South Range 6 West.

Chains

T<sub>9</sub>. 12° 18' E.

40.00 Set temporary 1/4 Sec. cor

79.50 Intersect the 9<sup>th</sup> and 1.  
line at 15. lks S. of the  
cor. to Secs 25, 27, 33 + 34

Thence I run

S. 89° 54' W. on a true  
line bet. Secs 25 + 33T<sub>9</sub>. 12° 18' E.

39.90 Set a post 8 ft. long &  
 ins. square with marked  
 stone 12 ins. in the ground  
 for 1/4 Sec. cor. marked 1/4  
 N. on N. face, dug pits  
 15 x 15 x 12 ins. E and W.  
 of post 5 1/2 ft. dist. and  
 raised a mound of earth  
 1 1/2 ft. high & 1/2 ft. base  
 around post

558

BOOK 1218

## Subdivisions of 6.

Ch Chain

79.80 The cor. to Secs 28, 29, 32 &amp; 33

Land level mesa

Soil 1<sup>st</sup> rate

N 0° 2' W. bet. Secs 28 &amp; 29

S 91° 18' E.

40.00 Set a post 3 ft. long  
 2 ins. square with  
 marked stone 12 ins.  
 in the ground for 114  
 Sec. cor. marked 114 S  
 on W. face, deep pits 18  
 x 18 x 12 ins. N. End S. of  
 post 5 1/2 ft. dist. and  
 raised a mound of  
 earth 1 1/2 ft. high 3 1/2  
 ft. base around post

## South Range 6 West 59

chains

50.00 Set a post 4 ft. long 4  
 ins. square with marked  
 stone 12 ins. in the ground  
 for cor. to Secs 20, 21, 28 & 29  
 marked

T. 6. S. 21. on N. E.

R. 6. W. 28. on S. E.

S 29. on S. W. end

S 20. on N. W. faces with  
 2 notches on S. end &  
 notches on E. edges. dig  
 pits 18x18x12 ins. in  
 each Sec. 5 1/2 ft. dist. end  
 raised a mound of earth  
 2 ft. high 4 1/2 ft. base  
 around post

Land level mesa

Soil 1  $\frac{1}{2}$  rate

560

BOOK 1218

## Subdivisions Sp. 6.

Ch Chains  $N 89^{\circ} 54' E$ . on a random  
line bet. Secs 21 + 28  
 $T 912^{\circ} 18' E$ .

40.00 Set temporary  $1/4$  Sec. Cor  
79.90 Intersect the N End l. line  
at 4 lks. N. of Cor. to Secs  
21. 22. 27 + 28

Thence Run

$S. 89^{\circ} 56' W$ . on a true line  
bet. Secs 21 + 28

$T 912^{\circ} 18' E$ .

3.9.9.5 Set a post 3 ft. long  
ins. square with marked  
stone 12 ins. in the ground  
for  $1/4$  Sec. Cor. marked  $1/4$   
N. on N. face, dug pits  $15 \times 15$   
 $\times 12$  ins. E End W. of post  $1/2$   
ft. dist. and raised a mound  
of earth  $1 1/2$  ft. high  $3 1/2$  ft.



## South Range 6 West 61

Chain base around post

79.90 The cor. to Secs 20, 21, 28 & 29

Land level mesa

Soil 1<sup>st</sup> rate

---

N 0° 2' W. bet. Secs 20 & 21

Ta. 12° 18' E.

40.00 Set a post 3 ft. long 3  
 ins. square with marked  
 stone 12 ins. in the ground  
 for 1/4 Sec. cor. marked 1/4 N  
 on W. face, aug pits 18x18  
 x 12 ins. N. and S. of post 5 1/2  
 ft. dist and raised a mound  
 of earth 1 1/2 ft. high 3 1/2 ft.  
 base around post

80.00 Set a post 4 ft. long 4  
 ins. square with marked

62.

## Subdivisions T. 6. S. R. 6. W.

Chains Stone 12 ins. in the ground  
for cor. to Secs 16, 17, 20 & 21  
marked

T. 6. S. 16. on N. E.

R. 6. W. 21. on S. E.

S. 20. on S. W. End

S. 17. on N. W. faces with  
3 notches on S. End 4  
notches on E. edges dug  
pits 18 x 18 x 12 ins. in  
each Sec.  $5\frac{1}{2}$  ft. dist. and

raised a mound of  
earth 2 ft. high  $4\frac{1}{2}$  ft.  
base around post

Land level mesa

Soil  $1\frac{1}{2}$  rate

Scattering mesquite  
brush

---

U. S. Surveyor-General's Office,

TUCSON, A. T., *March 4* 1883

The foregoing Field Notes of the Surveys of  
The Subdivision Lines of  
The *S. R. 6 W.* of The

*Gila and Salt River Meridian*  
in *Territory of Ariz* executed by  
*Lewis Wolfley*

U. S. Deputy Surveyor, under his contract dated  
*May 26<sup>th</sup> 1892*

having been critically examined, the necessary corrections and explanations made, the said Field Notes and the surveys they describe are hereby approved.

*Quincy Johnson*  
U. S. Surveyor-General  
for the Territory of Arizona.