

# FIELD-NOTES

OF

No. 1311

The *Eastern* Lines of

Townships 13, 14, 15, and 17 **BOOK**

1311

Ranges 17, 18, 19, 20, and 21 East,

Gila and Salt River Meridian, Arizona.

BY

*Henry W. ...* Deputy Surveyor,

under his contract of *July 28<sup>th</sup> 1883*

Survey commenced *April 10<sup>th</sup> 1883*

Survey completed *June 27<sup>th</sup> 1883*

Platted by *No. 1311* 188

Copied for Washington by \_\_\_\_\_ 188

Copied for Register by \_\_\_\_\_ 188



1311

~~Index~~

BOOK 1311

N&S	T. 14 N.	R. 17 E.	✓
N&E	T. 15 N.	R. 18 E.	✓
S. & E	T. 15 N.	R. 18 E.	✓
W	T. 16 N.	R. 18 E.	✓
W	T. 17 N.	R. 19 E.	✓
N&S	T. 15 N.	R. 21 E.	✓

Index ————— Page.

South Dry	T 14 N R 17 E	1
East "	T 14 N R 17 E	10
North "	T 14 N R 17 E	16
East "	T 15 N R 17 E	21.
North "	T 15 N R 17 E	27
North "	T 14 N R 21 E	34
North "	T 15 N R 21 E	42
South Dry	T 15 N R 18 E	49
East "	T 15 N R 18 E	56
North "	T 15 N R 18 E	63
West "	T 17 N R 19 E	70
West "	T 16 N R 18 E	77

No. 1311

Chains.

BOOK 1311

5	6	7	8	9	10
11	12	13	14	15	16
17	18	19	20	21	22
23	24	25	26	27	28
29	30	31	32	33	34
35	36	37	38	39	40
41	42	43	44	45	46

Before proceeding further with the exteriors of this Tp.,  
I made a change of 6 minutes in the latitude arc

subtracting same from  
even; and at noon verified and  
ation on the sun. I also fur-  
reversing.

& 14 Rs. 17. & 16 E,

random line on S. B. of Tp.

Va. 18° 30' East.

every half mile, and at 6 miles  
point 400 lbs. Sout of Cor. to Tps,

17 <sup>2</sup> W 18 E, which is a

limestone, set firmly in the ground  
marked with 6 notches on each  
edge and with a mound of  
stone alongside;

From which corner I run.

S. 89° 30' W. on a true line between sections 1 <sup>4</sup> W 36.

Va. 13° 30' East.

Descend.

BOOK 1311

BOOK 1311

0	1	2	3	4	5	6	7	8	9	10	11	12	13	14	15	16	17	18	19	20	21	22	23	24	25	26	27	28	29	30	31	32	33	34	35	36	37	38	39	40	41	42	43	44	45	46	47	48	49	50	51	52	53	54	55	56	57	58	59	60	61	62	63	64	65	66	67	68	69	70	71	72	73	74	75	76	77	78	79	80	81	82	83	84	85	86	87	88	89	90	91	92	93	94	95	96	97	98	99	100
---	---	---	---	---	---	---	---	---	---	----	----	----	----	----	----	----	----	----	----	----	----	----	----	----	----	----	----	----	----	----	----	----	----	----	----	----	----	----	----	----	----	----	----	----	----	----	----	----	----	----	----	----	----	----	----	----	----	----	----	----	----	----	----	----	----	----	----	----	----	----	----	----	----	----	----	----	----	----	----	----	----	----	----	----	----	----	----	----	----	----	----	----	----	----	----	----	----	----	----	-----

For Preliminary Notes and  
descriptions of instrument  
used - see book No. 1.

S. B. T. 14 N. R. 17 E. G. &amp; S. R. M.

No. 1311

Chains.

Before proceeding ~~farther~~ with the exteriors of this Tp., I made a change of 6 minutes in the latitude arc of my solar compass by subtracting same from the reading previously given, and at noon verified and corrected same by observation on the sun. I also further tested instrument by reversing.

From the Cor. to Tps. 13 & 14 Rs. 17. & 16 E., previously set by me.

I run East on a random line on S. B. of Tp.

Va.  $13^{\circ} 30'$  East.

I set temporary corners at every half mile, and at 6 miles 7.70 chs. I arrive at a point 400 lks. South of Cor. to Tps.

$13^{\text{th}}$  14 N., Rs. 17  $^{\text{th}}$  18 E., which is a limestone set firmly in the ground marked with 6 notches on each edge and with a mound of stone alongside;

From which corner I run.

S.  $89^{\circ} 30' 20''$  on a true line between sections 1 and 36.

Va.  $13^{\circ} 50'$  East.

Descend.

Chains.

- 28.12 Cross Creek, 30 lks. wide, Course N. 30° W. and ascend.
- 40.00 Set a post 3 ft. long, 3 ins. diam. with marked stone, 12 ins. in the ground, for  $\frac{1}{4}$  Sec. Cor., marked  $\frac{1}{4}$  S. on N. face, and raised a mound of stone 1  $\frac{1}{2}$  ft. high, 3  $\frac{1}{2}$  ft. base around post. Pits impracticable.  
 from which  
 A Pine 6 ins. diam. bears N. 56° E, 15 lks. dist. marked  $\frac{1}{4}$  S. B. T.  
 A Pine 6 ins. diam. bears S. 27° E, 23 lks. dist. marked  $\frac{1}{4}$  S. B. T.
- 53.00 Top of Spur, bears N. 10° E and descend.
- 63.35 Cross Wash, 40 lks. wide, Course N. 27° E and ascend.
- 80.00 Set a post 4 ft. long, 4 ins. square, with marked stone, 12 ins. in the ground, for Cor. to Secs. 1, 2, 35<sup>2</sup> & 36, marked T. 14 N. S. 36, on N. E., R. 17 E, S. 1 on S. E. <sup>S. 14 N.</sup> S. 2 on S. W. and S. 35 on N. W. faces, with S notch <sup>20</sup> on W. and 1 notch on E. edges, dug pits, 18 x 18 x 12 ins. in each Sec., 5  $\frac{1}{2}$  ft. dist., and raised a mound of earth 2 ft. high, 4  $\frac{1}{2}$  ft. base around post.  
 Land mountainous  
 Soil <sup>14<sup>th</sup></sup> rate,  
 Heavy timber of Pine and cedar.  
 Undergrowth of Juniper.

Chains.

S. 87° 30' W on a true line between sections 2<sup>nd</sup> & 3<sup>rd</sup>.

Va. 73045' East.

Ascend.

18.00 Top of Ridge, bears N. W and descend.

40.00 Set a *lime* stone 24 x 12 x 8 ins., 18 ins. in the ground, for  $\frac{1}{2}$  Sec. Cor., marked  $\frac{1}{2}$  on N. face, and raised a mound of stone. alongside. Pits impracticable. from which

A Pine 6 ins. diam. bears S. 19° W, 66 lks. dist. marked  $\frac{1}{2}$  S. B. T.

A Cedar 4 ins. diam. bears N. 71° E, 53 lks. dist. marked  $\frac{1}{2}$  S. B. T.

55.85 Cross Creek, 50 lks. wide, Course N. 20° E. and ascend.

80.00 Set a *lime* stone 16 x 12 x 6 ins. 11 ins. in the ground for Cor. to Secs. 2, 3, 34<sup>th</sup> & 35<sup>th</sup> marked with 4 notch<sub>00</sub> on W and 2 notch<sub>00</sub> on E. edges and raised a mound of stone. alongside. Pits impracticable. from which

A Pine 7 ins. diam. bears N. 45° E, 83 lks. dist. marked T. 14 N, R. 17 E, S., 35 B. T.

A Pine 4 ins. diam. bears S. 81° E, 56 lks. dist. marked T. 13 N, R. 17 E, S., 2 B. T.

S. B. T. 14 N. R. 17 E. G. & S. R. M.

Chains.

A Pine 8 ins. diam. bears S. 82° W, 32 lks. dist.  
marked T. 13 N., R. 17 E., S., 3 B. T.

No other trees within limits.

Land mountainous

Soil 4<sup>th</sup> rate,

Heavy timber of Pine and cedar.

Undergrowth of Juniper.

---

S. 89° 30' W. on a true line between sections 3 and 34.

Va. 13° 45' East.

Ascend.

16.00 Top of Ridge, bears N. 30° W. and descend.

40.00 Set a post 3 ft. long, 3 ins. diam. with marked stone,  
12 ins. in the ground, for  $\frac{1}{4}$  Sec. Cor., marked  $\frac{1}{4}$  S. on  
N. face, and raised a mound of stone 1 $\frac{1}{2}$  ft. high,  
3 $\frac{1}{2}$  ft. base around post. Pits impracticable.

from which

A Pine 6 ins. diam. bears S. 32° E, 78 lks. dist.  
marked  $\frac{1}{4}$  S. B. T.

A Pine 8 ins. diam. bears N. 37° W, 28 lks. dist.  
marked  $\frac{1}{4}$  S. B. T.

59.70 Cross Creek, 40 lks. wide, Course N. E. and ascend.

Chains.

30.00

Set a post 4 ft. long, 4 ins. square, with marked stone,  
 12 ins. in the ground, for Cor. to Secs. 3, 4, 33 and 34,  
 marked T. 14 N. S. 34, on N. E., R. 17 E., S. 3  
 on S. E., S. 4 on S. W, and S. 33 on N. W. face,  
 with 3 notches on ~~W~~ and 3 notches on E. edges;  
 and raised a mound of stone 2 ft. high, 4½ ft. base  
 around post. Pits impracticable. from which

A Pine 8 ins. diam. bears N. 41° E, 82 lbs. dist.  
 marked T. 14 N., R. 17 E., S., 34 B. T.

A Pine 7 ins. diam. bears S. 27° E, 63 lbs. dist.  
 marked T. 13 N., R. 17 E., S., 3 B. T.

A Pine 10 ins. diam. bears S. 40° W, 14 lbs. dist.  
 marked T. 13 N., R. 17 E., S., 4 B. T.

A Pine 6 ins. diam. bears N. 25° W, 41 lbs. dist.  
 marked T. 14 N., R. 17 E., S., 33 B. T.

Land mountainous

Soil 4<sup>00</sup> rate,

Heavy timber of Pine, Cedar and Juniper.  
 Undergrowth of same.



S. B. T. 14 N. R. 17 E. G. &amp; S. R. M.

Chains.

S.  $89^{\circ} 30' W$  on a true line between sections 4<sup>and</sup> 33.Va.  $13^{\circ} 45'$  East.

Ascend.

40.00 Set a Sand stone  $16 \times 10 \times 6$  ins., 11 ins. in the ground, for  $\frac{1}{4}$  Sec. Cor., marked  $\frac{1}{4}$  on N. face, dug pits,  $18 \times 18 \times 12$  ins., E. and W. of stone  $5\frac{1}{2}$  ft. dist., and raised a mound of earth  $1\frac{1}{2}$  ft. high,  $3\frac{1}{2}$  ft. base. alongside.

58.00 Top of Ridge, bears N.  $30^{\circ} E$ . and descend.

80.00 Set a Sand stone  $18 \times 12 \times 4$  ins. 12 ins. in the ground for Cor. to Secs. 4, 5, 32<sup>and</sup> 33, marked with 2 notches on W. and 4 notches on E. edges and raised a mound of stone. alongside. Pits impracticable. from which

A Pine 6 ins. diam. bears N.  $52^{\circ} E$ , 30 lbs. dist. marked T. 14 N. R. 17 E. S. 33 B. T.

A Pine 10 ins. diam. bears S.  $35^{\circ} W$ , 34 lbs. dist. marked T. 13 N. R. 17 E. S. 5 B. T.

A Pine 8 ins. diam. bears N.  $17^{\circ} W$ , 23 lbs. dist. marked T. 14 N. R. 17 E. S. 32 B. T.

No other trees within limits.

Land Mountainous

Soil 3<sup>rd</sup> rate.

## Chains.

Timber of Pine and Cedar.

Undergrowth of same.

---

S. 89° 30' W. on a true line between sections 5<sup>th</sup> and 32.

Va. 13° 30' East.

Descend.

2.40 Cross Creek, 20 lks. wide, Course N. 30° E. and ascend.

40.00 Set a lime stone 16 x 14 x 6 ins., 11 ins. in the ground, for  $\frac{1}{2}$  Sec. Cor., marked  $\frac{1}{2}$  on N. face, and raised a mound of stone. alongside. Pits impracticable.

from which

A Pine 8 ins. diam. bears S. W. 68 lks. dist.  
marked  $\frac{1}{2}$  S. B. T.

A Pine 6 ins. diam. bears N. 51° W., 21 lks. dist.  
marked  $\frac{1}{2}$  S. B. T.

44.00 Top of Ridge, bears N.  $\frac{1}{2}$  S. and descend.

80.00 Set a lime stone 24 x 12 x 6 ins. 18 ins. in the ground for Cor. to Secs. 5, 6, 31<sup>th</sup> and 32 marked with 1 notch on W and 5 notches on E. edges and raised a mound of stone. alongside. Pits impracticable.  
from which

## Chains.

A Cedar 8 ins. diam. bears N. 39° W., 44 lks. dist.  
marked T. 14 W., R. 17 E., S., 31 B. T.

A Pine 6 ins. diam. bears N. 57° E., 46 lks. dist.  
marked T. 14 W. R. 17 E., S., 32 B. T.

No other trees within limits.

Land mountainous.

Soil 3<sup>rd</sup> rate

Undergrowth of Juniper.

Timber of Pine, Cedar & Juniper

---

N. 89° 30' W. on a true line between sections 6 and 31.

Va. 13° 30' East.

Descend.

29.00 Cross Creek, 20 lks. wide, Course N. 10° E. and ascend.

40.00 Set a sand stone 20 x 12 x 10 ins., 15  
ins. in the ground, for  $\frac{1}{4}$  Sec. Cor., marked  $\frac{1}{4}$  on N.  
face, and raised a mound of stone. alongside. Pits  
impracticable.

from which

A Pine 10 ins. diam. bears N. 51° E., 20 lks. dist.  
marked  $\frac{1}{4}$  S. B. T.

S. B. T. 14 N R. 17 E. G. & S. R. M.

Chains.

A Pine 8 ins. diam. bears  $S 54^{\circ} E$ , 26 Uks. dist.  
marked  $\frac{1}{4}$  S. B. T.

49.50 Top of Spur, bears S. E. and descend.

63.10 Cross Wash, 20 Uks. wide, Course S. E. and ascend.

72.00 Top of Ridge, bears N. E. and descend.

87.70 The Cor. to Tps. 13 and 14 N. Rs. 16 & 17 E.

Land mountainous

Soil 3<sup>rd</sup> rate,

Heavy timber of Pine and Cedar.

Undergrowth of same and juniper

April 10<sup>th</sup> 1888.

E. B. T. 14 N. R. 17 E. G. &amp; S. R. M.

Chains.

From the Cor. to Tps. 13<sup>and</sup> 14 N. Rs. 17 & 18 E,

previously described, Iron,

North on a true line between sections 31<sup>and</sup> 36.

Va. 130 30' East.

Descend.

15.00 Cross Wash, 6 lks. wide, Course W. and ascend.

40.00 Set a lime stone 19 x 12 x 4 ins., 14  
ins. in the ground, for  $\frac{1}{4}$  Sec. Cor., marked  $\frac{1}{4}$  on W.1 ace, dug pits, 18 x 18 x 12 ins., N. and S. of stone  
5 $\frac{1}{2}$  ft. dist., and raised a mound of earth 1 $\frac{1}{2}$  ft. high,  
3 $\frac{1}{2}$  ft. base. alongside.80.00 Set a lime stone 21 x 15 x 9 ins. 16 ins. in  
the ground for Cor. to Secs. 25, 30, 31<sup>and</sup> 36, marked  
with / notch on S. and T notches on N edges and  
raised a mound of stone. alongside. Pits impracticable.  
Land rolling.Soil 2<sup>nd</sup> rate

Undergrowth of Juniper.

Chains.

North on a true line between sections 25<sup>th</sup> & 30.

Va. 130° 30' East.

Ascend.

40.00 Set a lime stone 17 x 10 x 7 ins., 11 ins. in the ground, for  $\frac{1}{4}$  Sec. Cor., marked  $\frac{1}{4}$  on W. face, and raised a mound of stone. alongside. Pits impracticable.

58.00 Top of Ridge, bears N. 38° W. and descend.

80.00 Set a lime stone 25 x 13 x 12 ins. 19 ins. in the ground for Cor. to Secs. 19, 24, 25<sup>th</sup> & 30, marked with 2 notches on S. and 4 notches on N. edges and raised a mound of stone. alongside, Pits impracticable.  
Land rolling.

Soil 3<sup>rd</sup> rate

Undergrowth of Juniper.

Chains.

North on a true line between sections 17 <sup>and</sup> 24,  
 Va. 13° 30' East.

Descend.

40.00 Set a sand stone 25 x 15 x 11 ins., 17  
 ins. in the ground, for  $\frac{1}{2}$  Sec. Cor., marked  $\frac{1}{2}$  on W.  
 face, and raised a mound of stone. alongside. Pits  
 impracticable.

41.12 Top of Ridge, bears N. 30° W. and descend.

80.00 Set a post 4 ft. long, 4 ins. square, with marked stone,  
 12 ins. in the ground, for Cor. to Secs. 13, 15, 19 <sup>and</sup> 24,  
 marked T. 14 N. S. 18, on N. E., R. 18 E; S. 19  
 on S. E. S. <sup>R. 17 E.</sup> 24 on S. W. and S. 13 on N. W. faces;  
 with 3 notches on S. and 3 notches on N. edges;  
 dug pits, 18 x 18 x 12 ins. in each Sec., 5  $\frac{1}{2}$  ft. dist.,  
 and raised a mound of earth 2 ft. high, 4  $\frac{1}{2}$  ft. base  
 around post.  
 Land rolling.

Soil 3<sup>rd</sup> rate

Undergrowth of Juniper.

Chains.

North on a true line between sections 13<sup>and</sup> 18

Var. 13° 30' East.

Over level land

40.00 Set a *lime* stone 15 x 10 x 6 ins., 10 ins. in the ground, for  $\frac{1}{4}$  Sec. Cor., marked  $\frac{1}{4}$  on W. face, dug pits, 18 x 18 x 12 ins., N. and S. of stone 5 $\frac{1}{2}$  ft. dist., and raised a mound of earth 1 $\frac{1}{2}$  ft. high, 3 $\frac{1}{2}$  ft. base. alongside.

45.00 Foot of Spur, bears E, and ascend.

57.18 Top of Spur, bears N. E. and descend.

80.00 Set a *lime* stone 15 x 11 x 7 ins., 12 ins. in the ground for Cor. to Secs. 7, 12, 13<sup>and</sup> 18 marked with 4 notches on S. and 2 notches on W. edges, dug pits 18 x 18 x 12 ins. in each Sec., 5 $\frac{1}{2}$  ft. dist., and raised a mound of earth 2 ft. high 4 $\frac{1}{2}$  ft. base. alongside.

Land level. *and* rolling.

Soil 2<sup>nd</sup> rate

Vegetation, bunchgrass.



E. B. T. 14 N. R. 17 E. G. & S. R. M.

Chains.

North on a true line between sections 7 <sup>and</sup> 12.  
Va. 13° 30' East.

Descend.

40.00 Set a post 3 ft. long, 3 ins. diam. with marked stone.  
12 ins. in the ground, for 1/4 Sec. Cor., marked 1/4 S. on  
W. face, dug pits, 18 x 18 x 12 ins., N. and S. of  
post 5 1/2 ft. dist., and raised a mound of earth 1 1/2 ft.  
high, 3 1/2 ft. base around post.

80.00 Set a post 4 ft. long, 4 ins. square, with marked stone,  
2 ins. in the ground, for Cor. to Secs. 1, 6, 7 <sup>and</sup> 12,  
marked T. 14 1/4 S. 6, on N. E., R. 18 E.; S. 7  
<sup>R. 17 E.</sup>  
on S. E., S. 12 on S. W. and S. 1 on N. W. face,  
with 5 notches on S. and 1 notch on N. edges;  
dug pits, 18 x 18 x 12 ins. in each Sec., 5 1/2 ft. dist.,  
and raised a mound of earth 2 ft. high, 4 1/2 ft. base  
around post.

Land rolling.

Soil 2<sup>nd</sup> rate

Undergrowth of Juniper.

Chains.

North on a true line between sections 1 and 6.

Var. 13° 30' East

Descend.

40.00

Set a post 3 ft. long, 3 ins. diam. with marked stone. 12 ins. in the ground, for 1/4 Sec. Cor., marked 1/2 S. on W. face, dug pits, 18 x 18 x 12 ins., N. and S. of post 5 1/2 ft. dist., and raised a mound of earth 1 1/2 ft. high, 3 1/2 ft. base around post.

50.00

Set a line stone 27 x 6 x 6 ins. 20 ins. in the ground, for Cor. to Tps. 14 and 15 N. R's 17 and 18 E., marked with 6 notches on each edge, dug pits, 24 x 18 x 12 ins. lengthwise on each line, N. S. E. and W. of stone, 6 ft. dist., and raised a mound of earth 2 1/2 ft. high, 5 ft. base. alongside.

Land rolling.

Soil 2<sup>nd</sup> rate

Undergrowth of Jumper.

Before proceeding further with the exteriors of this Tp., I made a change of 0 minutes in the latitude arc of my solar compass by adding same to the reading previously given, and at noon verified and corrected same by observation on the sun. I also further tested instrument by reversing.

From the Cor. to Tps. 14 & 15<sup>th</sup>, Rs. 17 & 18<sup>th</sup>,

I run West on a random line on N. B. of Tp.

Va. 14° 00' East.

I set temporary corners at every half mile, and at 6 miles 8.30 chs. I arrive at a point 512 lks. North of Cor. to Tps,

14<sup>th</sup> & 15<sup>th</sup>, Rs. 16<sup>th</sup> & 17<sup>th</sup>, previously set by me.

From which corner I run.

N. 87° 23' E. on a true line between sections 6<sup>th</sup> & 81.

Va. 13° 30' East.

Descend.

38.30 Cross Wash, 20 lks. wide, Course N. 20° E. and ascend.

48.30 Set a lime stone 18 x 9 x 6 ins., 12 ins. in the ground, for 1/2 Sec. Cor., marked 1/2 on N. face, and raised a mound of stone. alongside. Pits impracticable.

72.30 Top of Ridge, bears N. 20° E. and descend.

88.30 Set a lime stone 16 x 10 x 6 ins., 11 ins. in the ground for Cor. to Secs. 5, 6, 31<sup>st</sup> & 32, marked with 1 notch on N. and 5 notches on E. edges and raised a mound of stone. alongside, Pits impracticable. Land mountainous.

Soil 2<sup>nd</sup> & 3<sup>rd</sup> rate

Vegetation, bunchgrasses.

BOOK 1311

N. 87° 23' E. on a true line between sections 5<sup>th</sup> & 32.

Va. 13° 30' East.

Descend.

1.00 Cross Creek, 40 lks. wide, Course N. 30° E. and ascend.

19.00 Top of Spur, bears N. and descend.

28.75 Cross Creek, 60 lks. wide, Course N. 30° W. and ascend.

40.00 Set a lime stone 24 x 12 x 8 ins., 18 ins. in the ground, for 1/2 Sec. Cor., marked 1/2 on N. face, and raised a mound of stone. alongside. Pits impracticable.

N. B. T. 14 N. R. 17 E. G. &amp; S. R. M.

Chains.

80.00 Set a lime stone  $20 \times 12 \times 8$  ins. 15 ins. in the ground for Cor. to Secs. 4, 5, 32<sup>nd</sup> & 33, marked with 2 notches on W and 4 notches on E. edges and raised a mound of stone. alongside. Pits impracticable.  
Land mountainous.  
Soil 3<sup>rd</sup> rate  
Undergrowth of Juniper<sup>2nd</sup> & Cedar.

---

N. 87° 28' E. on a true line between sections 4<sup>th</sup> & 33,  
Va. 13° 30' East.

Ascend.

40.00 Set a lime stone  $16 \times 8 \times 6$  ins., 11 ins. in the ground, for  $\frac{1}{4}$  Sec. Cor., marked  $\frac{1}{4}$  on N. face, and raised a mound of stone. alongside. Pits impracticable.

48.00 Top of Ridge, bears N. 30° W. and descend.

80.00 Set a lime stone  $24 \times 10 \times 8$  ins. 18 ins. in the ground for Cor. to Secs. 3, 4, 33<sup>rd</sup> & 34, marked with 3 notches on W and 3 notches on E. edges and raised a mound of stone. alongside. Pits impracticable.  
Land mountainous.  
Soil 3<sup>rd</sup> rate  
Undergrowth of Cedar.

T. 14 N. R. 17 E. G. &amp; S. R. M.

N  $89^{\circ} 23' E$  on a true line between sections 3<sup>rd</sup> and 34.

Va.  $13^{\circ} 30'$  East.

Descend.

28.00 Cross Wash, 19 lks. wide, Course N.  $30^{\circ} E$  and ascend.

40.00 Set a post 3 ft. long, 3 ins. diam. with marked stone.  
12 ins. in the ground, for  $\frac{1}{2}$  Sec. Cor., marked  $\frac{1}{2}$  S. on  
N. face, dug pits, 18 x 18 x 12 ins., E. and W. of  
post  $5\frac{1}{2}$  ft. dist., and raised a mound of earth  $1\frac{1}{2}$  ft.  
high,  $3\frac{1}{2}$  ft. base around post.

80.00 Set a post 4 ft. long, 4 ins. square, with marked stone.  
12 ins. in the ground, for Cor. to Secs. 2, 3, 34<sup>th</sup> and 35<sup>th</sup>  
marked T. 14 N. S. 35, on N. E., R. 17 E, S. 2  
on S. E. S. 3 on S. W. and S. 34 on N. W. faces  
with 4 notches on W and 2 notches on E. edges;  
dug pits, 18 x 18 x 12 ins. in each Sec.,  $5\frac{1}{2}$  ft. dist.,  
and raised a mound of earth 2 ft. high,  $4\frac{1}{2}$  ft. base  
around post.

Land mountainous.

Soil 2<sup>nd</sup> & 3<sup>rd</sup> rate

Vegetation, bunchgrass.

U. B. T. 14 N. R. 17 E. G. & S. R. M.

chains.

N. 89° 23' E. on a true line between sections 2<sup>nd</sup> and 35.

Va. 73° 30' East.

Ascend.

17.00 Top of Spur, bears N.E. and descend.

35.00 Cross Wash, 6 lks. wide, Course N.E. and ascend.

40.00 Set a Sand stone 20 x 12 x 10 ins., 11 ins. in the ground, for  $\frac{1}{4}$  Sec. Cor., marked  $\frac{1}{4}$  on N. face, dug pits, 18 x 18 x 12 ins., E. and W. of stone 5 $\frac{1}{2}$  ft. dist., and raised a mound of earth 1 $\frac{1}{2}$  ft. high, 3 $\frac{1}{2}$  ft. base. alongside.

56.00 Top of Spur, bears N.W. and descend.

80.00 Set a Sand stone 27 x 18 x 4 ins. 19 ins. in the ground for Cor. to Secs. 1, 2, 35<sup>th</sup> and 36, marked with 5 notches on N. and 1 notch on E. edges and raised a mound of stone. alongside, Pits impracticable. Land mountainous.

Soil 2<sup>nd</sup> rate

Vegetation, bunchgrass.

20  
B. T. 14 N R. 17 E. G. & S. R. M.

chains.

N. 87° 23' E on a true line between sections 1<sup>and</sup> 36.

Va. 14° 15' East.

Ascend.

1.00 Top of Spur, bears N. and descend.

30.20 Over level land

40.00 Set a post 3 ft. long, 3 ins. diam. with marked stone. 12 ins. in the ground, for 1/2 Sec. Cor., marked 1/2 S. on N. face, dug pits, 18 x 18 x 12 ins., E. and W. of post 5 1/2 ft. dist., and raised a mound of earth 1 1/2 ft. high, 3 1/2 ft. base around post.

80.00 The Cor. to Tps. 14<sup>and</sup> 15 N. Rs. 17 & 18 E

Land mountainous. And level.

Soil 2<sup>nd</sup> rate

Vegetation, bunchgrass  
April 11<sup>th</sup> 1883

E. B. T. 15 N. R. 17 E. G. &amp; S. R. M.

From the Cor. to Secs 14+15 T. R. 17+18 E recently  
 established by me - I run -

North on a true line between sections 31<sup>st</sup> and 36.

Va.  $14^{\circ}00'$  East.

Over level land

- 40.00 Set a sand stone  $24 \times 12 \times 6$  ins., 18  
 ins. in the ground, for  $\frac{1}{4}$  Sec. Cor., marked  $\frac{1}{4}$  on W.  
 face, dug pits,  $18 \times 18 \times 12$  ins., N. and S. of stone  
 $5\frac{1}{2}$  ft. dist., and raised a mound of earth  $1\frac{1}{2}$  ft. high,  
 $3\frac{1}{2}$  ft. base. alongside.
- 42.00 Same level land and ascend,
- 55.00 Top of Spur, bears E. and W. and descend.
- 80.00 Set a post 4 ft. long, 4 ins. square, with marked stone.  
 12 ins. in the ground, for Cor. to Secs. 25, 30, 31<sup>st</sup> and 36,  
 marked T. 15 N. S. 30, on N. E., R. 17 E., S. 31  
 on S. E., S. 36 on S. W. and S. 25 on N. W. faces,  
 with 1 notch on S. and 5 notches on N. edges;  
 dug pits,  $18 \times 18 \times 12$  ins. in each Sec.,  $5\frac{1}{2}$  ft. dist.,  
 and raised a mound of earth 2 ft. high,  $4\frac{1}{2}$  ft. base  
 around post.
- Land mountainous and level.
- Soil 3<sup>rd</sup> and 4<sup>th</sup> rate,
- Timber of Juniper and Cedar.
- Undergrowth of same.



Air Chains.

North on a true line between sections 25<sup>th</sup> & 30.

Va. 14° 00' East.

Descend.

20.00 Enter dry basin, bears N. 70° W.

32.00 Leave basin, bears N. 60° W. and ascend.

40.00 Set a sand stone 14 x 12 x 6 ins., 9  
ins. in the ground, for  $\frac{1}{4}$  Sec. Cor., marked  $\frac{1}{4}$  on W.  
face, dug pits, 18 x 18 x 12 ins., N. and S. of stone  
5 $\frac{1}{2}$  ft. dist., and raised a mound of earth 1 $\frac{1}{2}$  ft. high,  
3 $\frac{1}{2}$  ft. base. alongside.

58.00 Enter Cedar timber.

80.00 Set a sand stone 28 x 6 x 4 ins. 21 ins. in  
the ground for Cor. to Secs. 19, 24, 25<sup>th</sup> & 30, marked  
with 2 notch  $\infty$  on S. and 4 notches  $\infty$  on N. edges and  
raised a mound of stone. alongside, Pits impracticable.  
Land rolling.

Soil 2<sup>nd</sup> & 3<sup>rd</sup> rate

Undergrowth of cedar.

Timber of cedar.

ains.

North on a true line between sections 19<sup>th</sup> & 24.

Va. 14°00' East.

Ascend.

40.00 Set a sand stone 18 x 16 x 6 ins., 12 ins. in the ground, for  $\frac{1}{4}$  Sec. Cor., marked  $\frac{1}{4}$  on W. face, and raised a mound of stone. alongside. Pits impracticable.

2.00 Top of Spur, bears S.W. and descend.

0.00 Set a post 4 ft. long, 4 ins. square, with marked stone. 12 ins. in the ground, for Cor. to Secs. 13, 18, 19 & 24 marked T. N. S. 18, on N. E., R. 18 E, S. 19 on S. E. S. 24 on S. W. and S. 13 on N. W. faces with 3 notches on S. and 3 notches on W. edges; dug pits, 18 x 18 x 12 ins. in each Sec., 5 $\frac{1}{2}$  ft. dist. and raised a mound of earth 2 ft. high, 4 $\frac{1}{2}$  ft. base around post.

Land mountainous.

Soil 3<sup>rd</sup> & 4<sup>th</sup> rate

Vegetation, bunch grass.

2 E. B. T. 15 N. R. 17 E. G. & S. R. M.

C Chains.

North on a true line between sections 13<sup>and</sup> 18.

Va. 14° 00' East.

Descend.

11.30 Cross Wash, 10 lks. wide, Course S.W. and ascend.

40.00 Set a post 3 ft. long, 3 ins. diam. with marked stone.  
12 ins. in the ground, for  $\frac{1}{2}$  Sec. Cor., marked  $\frac{1}{2}$  S. on  
W. face, dug pits, 18 x 18 x 12 ins., N. and S. of  
post  $5\frac{1}{2}$  ft. dist., and raised a mound of earth  $1\frac{1}{2}$  ft.  
high,  $3\frac{1}{2}$  ft. base around post.

56.00 Top of Ridge, bears S. 60° W. and descend.

80.00 Set a post 4 ft. long, 4 ins. square, with marked stone.  
12 ins. in the ground, for Cor. to Secs. 7, 12, 13<sup>and</sup> 16  
marked T. 15<sup>th</sup> S. 7, on N. E. R. 18<sup>E</sup>, S. 18<sup>E</sup>  
on S. E. S. 13 on S. W. and S. 12 on N. W. faces  
with 4 notch 50 on S. and 2 notches on N. edges;  
dug pits, 18 x 18 x 12 ins. in each Sec.,  $5\frac{1}{2}$  ft. dist.,  
and raised a mound of earth 2 ft. high,  $4\frac{1}{2}$  ft. base  
around post.

Land mountainous.

Soil 2<sup>nd</sup> <sup>and</sup> 3<sup>rd</sup> rate

Vegetation, bunchgrass.

Chains.

North on a true line between sections 7 <sup>and</sup> 12,

Va. 74°00' East.

Descend.

6.00 Cross Wash, 20 lks. wide, Course N.E. and ascend.

35.00 Top of Spur, bears N.E. and descend.

40.00 Set a post 3 ft. long, 3 ins. diam. with marked stone,  
 12 ins. in the ground, for  $\frac{1}{2}$  Sec. Cor., marked  $\frac{1}{2}$  S. on  
 W. face, dug pits, 18 x 18 x 12 ins., N. and S. of  
 post  $5\frac{1}{2}$  ft. dist., and raised a mound of earth  $1\frac{1}{2}$  ft.  
 high,  $3\frac{1}{2}$  ft. base around post.

80.00 Set a sand stone 16 x 10 x 4 ins. 11 ins. in  
 the ground for Cor. to Secs. 1, 6, 7 <sup>and</sup> 12, marked  
 with S notch  $\infty$  on S. and / notch on N. edges, dug pits  
 18 x 18 x 12 ins. in each Sec.,  $5\frac{1}{2}$  ft. dist., and raised a  
 mound of earth 2 ft. high  $4\frac{1}{2}$  ft. base. alongside.

Land mountainous.

Soil 3<sup>rd</sup> 4<sup>th</sup> rate

Vegetation, bunchgrass.

Chains.

North on a true line between sections 1 & 6,  
 Va.  $14^{\circ}00'$  East.

Descend.

40.00 Set a post 3 ft. long, 3 ins. diam. with marked stone,  
 12 ins. in the ground, for  $\frac{1}{4}$  Sec. Cor., marked  $\frac{1}{4}$  S. on  
 W. face, dug pits, 18 x 18 x 12 ins., N. and S. of  
 post  $5\frac{1}{2}$  ft. dist., and raised a mound of earth  $1\frac{1}{2}$  ft.  
 high,  $3\frac{1}{2}$  ft. base around post.

72.50 Cross Wash, 50 lks. wide, Course N 27 W and ascend.

80.00 Set a sand stone 24 x 16 x 10 ins. 18 ins. in the  
 ground, for Cor. to Tps. 15 and 16 N R's 17 and  
 18 E., marked with 6 notches on each edge, and raised a  
 mound of stone. alongside. Pits impracticable.

Land mountainous.

Soil 3<sup>rd</sup> & 4<sup>th</sup> rate

Vegetation, bunch grass.

Chains.

Before proceeding further with the exteriors of this Tps. I made a change of 5 minutes in the latitude arc of my solar compass by adding same to the reading previously given, and at noon verified and corrected same by observation on the sun. I also further tested instrument by reversing.

I took the latitude and found it to be  $34^{\circ} 42' N$ .

From the Cor. to Tps. 15 & 16 N., Rs. 17. & 18<sup>E</sup>,  
~~not established~~  
 Run West on a random line on U. B. of Tp.

Va.  $13^{\circ} 30'$  East.

I set temporary corners at every half mile, and at 6 miles 7.60 chs. I arrive at a point 546 lks. North of Cor. to Tps, 15<sup>and</sup> 16 N., Rs. 16<sup>and</sup> 17<sup>E</sup>, previously set by me.

From which corner I run.

$N. 89^{\circ} 21' E$ . on a true line between sections 6<sup>and</sup> 31.

Va.  $14^{\circ} 15'$  East.

Ascend.

- 18.60 Top of Ridge, bears N. and S. and descend.
- 29.60 Cross Wash, 6 lks. wide, Course  $N. 20^{\circ} E$  and ascend.
- 46.60 Top of Ridge, bears N. and S. and descend.
- 47.60 Set a post 3 ft. long, 3 ins. diam. with marked stone.

N.B. T. 15 N. R. 17 E. G. & S. R. M.

## Chains.

12 ins. in the ground, for  $\frac{1}{4}$  Sec. Cor., marked  $\frac{1}{4}$  S. on N. face, dug pits, 18 x 18 x 12 ins., E. and W. of post  $5\frac{1}{2}$  ft. dist., and raised a mound of earth  $1\frac{1}{2}$  ft. high,  $3\frac{1}{2}$  ft. base around post.

87.60

Set a post 4 ft. long, 4 ins. square, with marked stone, 12 ins. in the ground, for Cor. to Secs. 5, 6, 31 <sup>and</sup> 32, marked T. 16 N. S. 32, on N. E., R. 17 E., S. 5 on S. E., S. 6 on S. W. and S. 31 on N. W. faces with 1 notch on W. and 5 notches on E. edges; dug pits, 18 x 18 x 12 ins. in each Sec.,  $5\frac{1}{2}$  ft. dist., and raised a mound of earth 2 ft. high,  $4\frac{1}{2}$  ft. base around post.

Land mountainous.

Soil 2<sup>nd</sup> rate.

Undergrowth of Juniper.

N. B. T. 15 N. R. 17 E. G. & S. R. M.

Chains,

N. 89° 21' E. on a true line between sections 5<sup>th</sup> & 32.

Va. 14° 15' East.

Descend.

18.05 Cross Creek, 30 lks. wide, Course N. 27° E. and ascend.

37.00 Top of Spur, bears N. 20° E. and descend.

40.00 Set a post 3 ft. long, 3 ins. diam. with marked stone.  
12 ins. in the ground, for  $\frac{1}{4}$  Sec. Cor., marked  $\frac{1}{4}$  S. on  
N. face, dug pits, 18 x 18 x 12 ins., E. and W. of  
post 5 $\frac{1}{2}$  ft. dist., and raised a mound of earth 1 $\frac{1}{2}$  ft.  
high, 3 $\frac{1}{2}$  ft. base around post.

72.70 Cross Wash, 5 lks. wide, Course N. 35° W. and ascend.

80.00 Set a post 4 ft. long, 4 ins. square, with marked stone.  
12 ins. in the ground, for Cor. to Secs. 4, 5, 32<sup>nd</sup> & 33,  
marked T. 16<sup>th</sup> S. 33, on N. E., R. 17 E., S. 4  
on S. E. S. <sup>T. 15<sup>th</sup></sup> 3 on S. W. and S. 32 on N. W. faces,  
with 2 notch 20 on N. and 4 notch 20 on E. edges;  
dug pits, 18 x 18 x 12 ins. in each Sec., 5 $\frac{1}{2}$  ft. dist.,  
and raised a mound of earth 2 ft. high, 4 $\frac{1}{2}$  ft. base  
around post.  
Land mountainous.

Soil 3<sup>rd</sup> rate

Undergrowth of Juniper.



80  
N.B. T. 15 N R. 17 E. G. & S. R. M.

Chains.

N.  $89^{\circ} 21' E$  on a true line between sections 4<sup>th</sup> & 33.

Va.  $14^{\circ} 15'$  East.

Ascend.

40.00

Set a post 3 ft. long, 3 ins. diam. with marked stone.  
12 ins. in the ground, for  $\frac{1}{2}$  Sec. Cor., marked  $\frac{1}{2}$  S. on  
N. face, dug pits, 18 x 18 x 12 ins., E. and W. of  
post  $5\frac{1}{2}$  ft. dist., and raised a mound of earth  $1\frac{1}{2}$  ft.  
high,  $3\frac{1}{2}$  ft. base around post.

80.00

Set a post 4 ft. long, 4 ins. square, with marked stone.  
12 ins. in the ground, for Cor. to Secs. 3, 4, 33<sup>rd</sup> & 34,  
marked T. 16<sup>th</sup> S. 34, on N. E., R. 17<sup>th</sup> E., S. 3  
on S. E. <sup>S. 15<sup>th</sup></sup> S. 4 on S. W. and S. 33 on N. W. face,  
with 3 notches on W. and 3 notches on E. edges,  
dug pits, 18 x 18 x 12 ins. in each Sec.,  $5\frac{1}{2}$  ft. dist.,  
and raised a mound of earth 2 ft. high,  $4\frac{1}{2}$  ft. base  
around post.  
Land rolling.  
Soil 3<sup>rd</sup> rate  
Undergrowth of Cedar <sup>and</sup> Pine.

N. B. T. 15 N. R. 17 E. G. &amp; S. R. M.

Chains.

N. 89° 21' E. on a true line between sections 3<sup>rd</sup> and 34<sup>th</sup>,

Va. 14° 00' East.

Ascend.

40.00 Set a post 3 ft. long, 3 ins. diam. with marked stone.  
12 ins. in the ground, for  $\frac{1}{4}$  Sec. Cor., marked  $\frac{1}{4}$  S. on  
N. face, dug pits, 18 x 18 x 12 ins., E. and W. of  
post  $5\frac{1}{2}$  ft. dist., and raised a mound of earth  $1\frac{1}{2}$  ft.  
high,  $3\frac{1}{2}$  ft. base around post.

62.00 Top of Ridge, bears N. W. <sup>90</sup> and E. and descend.

80.00 Set a post 4 ft. long, 4 ins. square, with marked stone.  
12 ins. in the ground, for Cor. to Secs. 2, 3, 34<sup>th</sup> and 35<sup>th</sup>,  
marked T. 16 N. S. 35, on N. E., R. 17 E, S. 2  
on S. E. <sup>S. N. W.</sup> S. 3 on S. W. and S. 34 on N. W. face,  
with 4 notches on W. and 2 notches on E. edges;  
dug pits, 18 x 18 x 12 ins. in each Sec.,  $5\frac{1}{2}$  ft. dist.,  
and raised a mound of earth 2 ft. high,  $4\frac{1}{2}$  ft. base  
around post.

Land mountainous.

Soil 3<sup>rd</sup> rateUndergrowth of Pine <sup>and</sup> cedar.

N. B. T. 15 N. R. 17 E. G. &amp; S. R. M.

Chains.

N. 87° 21' E. on a true line between sections 2 <sup>and</sup> 35.

Va. 13° 45' East.

Descend.

40.00

Set a post 3 ft. long, 3 ins. diam. with marked stone.  
 12 ins. in the ground, for  $\frac{1}{2}$  Sec. Cor., marked  $\frac{1}{2}$  S. on  
 N. face, dug pits, 18 x 18 x 12 ins., E. and W. of  
 post  $5\frac{1}{2}$  ft. dist., and raised a mound of earth  $1\frac{1}{2}$  ft.  
 high,  $3\frac{1}{2}$  ft. base around post.

47.50

Head of Ravine, Course N.W. and ascend

68.40

Top of Spur, bears N. 30° W. and descend.

80.00

Set a sand stone  $22 \times 20 \times 20$  ins. 16 ins. in  
 the ground for Cor. to Secs. 1, 2, 35 <sup>and</sup> 36, marked  
 with 5 notches on W. and 1 notch on E. edges and  
 raised a mound of stone. alongside. Pits impracticable.  
 from which

A Juniper 3 ins. diam. bears N. 13° E., 23 lks. dist.  
 marked T. 164 R. 17 E., S., 36 B. T.

No other trees within limits.

Land mountainous.

Soil 3<sup>rd</sup> RateDense undergrowth of Cedar <sup>and</sup> Juniper.

N. B. T. 15 N. R. 17 E. G. & S. R. M.

Chains.

N. 89° 21' E. on a true line between sections 1<sup>st</sup> & 36,

Va. 13° 30' East.

Descend.

40.00 *See* a Sand stone 16 x 12 x 4 ins., 11  
ins. in the ground, for  $\frac{1}{4}$  Sec. Cor., marked  $\frac{1}{2}$  on N.  
face, dug pits, 18 x 18 x 12 ins., E. and W. of stone  
 $5\frac{1}{2}$  ft. dist., and raised a mound of earth  $1\frac{1}{2}$  ft. high,  
 $3\frac{1}{2}$  ft. base. alongside. from which

A Cedar 3 ins. diam. bears N. 32° W, 59 lks. dist  
marked  $\frac{1}{2}$  S. B. T.

No other trees within limits.

67.46 Cross Wash, 20 lks. wide, Course N. and ascend.

80.00 The Cor. to Tps. 15<sup>th</sup> & 16 N. Rs. 17 & 18 E.

Land mountainous.

Soil 3<sup>rd</sup> Rate

Dense undergrowth of Cedar <sup>and Juniper</sup>  
April 12<sup>th</sup> 1883.

Chains:

Before proceeding further with the exteriors of this Tp., I made a change of 6 minutes in the latitude arc of my solar compass by ~~subtracting~~ <sup>adding</sup> same ~~to~~ <sup>from</sup> the reading previously given, and at noon verified and corrected same by observation on the sun. I also further tested instrument by reversing.

From the Cor. to Tps. 14 <sup>and</sup> 15 N. Rs. 21 & 22 E, which is a sandstone, set firmly in the ground, marked with 6 notches on each edge and with a mound of stone, in good order, along side.

I run West. on a random line on N. B. of Tp.

Va. 13° 51' East.

I set temporary corners at every half mile, and at 5 miles 76.00 chs. I arrive at a point 76 lks. South of Cor. to Tps,

14 <sup>and</sup> 15 N., R. 20 <sup>and</sup> 21 E, which is a Sandstone, set firmly in the ground, marked with 6 notches on each edge; with pits in each sec., N, S, E. <sup>and</sup> W of stone, 6 ft. dist, and a mound of earth, in good order, along side;

Chains.

from which

A Juniper 15 ins. diam. bears  $N 12^{\circ} W 122$  lks. dist.  
marked T. 15 N. R. 20 E., S., 36 B. T.

A Juniper 8 ins. diam. bears  $N 67^{\circ} E 73$  lks. dist.  
marked T. 15 N. R. 21 E., S., 31 B. T.

A Juniper 7 ins. diam. bears  $S 23^{\circ} E 50$  lks. dist.  
marked T. 14 N. R. 21 E., S., 6 B. T.

A Juniper 11 ins. diam. bears  $S 82^{\circ} W 310$  lks. dist.  
marked T. 14 N. R. 20 E., S., 1 B. T.

From which corner I run.

$S 89^{\circ} 04' E$  on a true line between sections 6 and 31.

Va.  $13^{\circ} 01'$  East.

Over rolling land.

4.00 Leave Timber, bears. N. and S.

38.00 Set a sand stone  $20 \times 10 \times 7$  ins., 15  
ins. in the ground, for  $\frac{1}{4}$  Sec. Cor., marked  $\frac{1}{4}$  on N.  
face, dug pits,  $18 \times 18 \times 12$  ins., E. and W. of stone  
 $5\frac{1}{2}$  ft. dist., and raised a mound of earth  $1\frac{1}{2}$  ft. high,  
 $3\frac{1}{2}$  ft. base. alongside.

78.00 Set a sand stone  $18 \times 14 \times 4$  ins. 12 ins. in  
the ground for Cor. to Secs. 5, 6, 31 and 32, marked  
with 1 notch on N. and 5 notches on E. edges, dug pits  
 $18 \times 18 \times 12$  ins. in each Sec.,  $5\frac{1}{2}$  ft. dist., and raised a  
mound of earth 2 ft. high  $4\frac{1}{2}$  ft. base. alongside.

N.B. T. 14 N. R. 21 E. G. & S. R. M.

Chains.

Land rolling.

Soil  $\bar{m}$  rate

Vegetation, bunchgrass.

S.  $89^{\circ} 54'$  E. on a true line between sections 5 and 2.

Va.  $13^{\circ} 51'$  East.

Over rolling land.

16.00 Top of Spur, bears N. and S. and descend.

40.00 Set a sand stone  $14 \times 10 \times 8$  ins., 7 ins. in the ground, for  $\frac{1}{4}$  Sec. Cor., marked  $\frac{1}{4}$  on N. face, dug pits,  $18 \times 18 \times 12$  ins., E. and W. of stone  $5\frac{1}{2}$  ft. dist., and raised a mound of earth  $1\frac{1}{2}$  ft. high,  $3\frac{1}{2}$  ft. base. alongside.

45.00 Cross Wash, 200 lks. wide, Course S E. and ascend.

65.00 Enter Timber, Bears. N. and S.

80.00 Set a sand stone  $17 \times 10 \times 8$  ins. 11 ins. in the ground for Cor. to Secs. 4, 5, 32 and 33, marked with 2 notches on W. and 4 notches on E. edges, dug pits  $18 \times 18 \times 12$  ins. in each Sec.,  $5\frac{1}{2}$  ft. dist., and raised a mound of earth 2 ft. high  $4\frac{1}{2}$  ft. base. alongside.

from which

A Juniper 7 ins. diam. bears N.  $75^{\circ}$  E., 63 lks. dist.

U. S. T. 14 N. R. 21 E. G. &amp; S. R. M.

No. 1311

Chains.

marked T. 154 R. 21 E., S., 33 B. T.

A Juniper 12 ins. diam. bears S. 27° E., 76 lks. dist.

marked T. 144 R. 21 E., S., 4 B. T.

A Juniper 9 ins. diam. bears S. 43° W., 200 lks. dist.

marked T. 144 R. 21 E., S., 5 B. T.

A Juniper 9 ins. diam. bears N. 5° W., 127 lks. dist.

marked T. 154 R. 21 E., S., 32 B. T.

Land mountainous

Soil 3<sup>00</sup> rate,

Heavy timber of Juniper and Pine,

Undergrowth of same.

S. 89° 54' E. on a true line between sections 4<sup>th</sup> and 3<sup>rd</sup>,

Va. 13° 51' East.

Ascend.

13.50 Top of Ridge, bears N. 40° S. and descend.

40.00 Set a Sand stone 28 x 16 x 8 ins., 21  
ins. in the ground, for  $\frac{1}{4}$  Sec. Cor., marked  $\frac{1}{4}$  on N.  
face, and raised a mound of stone. alongside. Pits  
impracticable.

52.00 Cross Wash, 30 lks. wide, Course N. 30° E. and ascend.

70.00 Top of Spur, bears N. 40° S. and descend.



N. B. T. 14 N. R. 21 E. G. &amp; S. R. M.

Chains.

78.50 Cross Wash, 200 lks. wide, Course N. and ascend.

80.00 Set a sand stone  $12 \times 10 \times 4$  ins. 8 ins. in the ground for Cor. to Secs. 3, 4, 33 and 34, marked with 3 notches on W and 3 notches on E. edges, dug pits  $18 \times 18 \times 12$  ins. in each Sec.,  $5\frac{1}{2}$  ft. dist., and raised a mound of earth 2 ft. high  $4\frac{1}{2}$  ft. base. alongside.

Land mountainous

Soil 3<sup>rd</sup> rate.

Timber of Juniper and Pine.

Undergrowth of same.

S.  $89^{\circ} 54'$  E. on a true line between sections 3 and 34,

Va.  $13^{\circ} 51'$  East.

Ascend.

5.50 Top of Spur, bears N. and S. and descend.

34.50 Cross Wash, 200 lks. wide, Course N. E. and ascend.

40.00 Set a sand stone  $15 \times 10 \times 1$  ins., 10 ins. in the ground, for  $\frac{1}{4}$  Sec. Cor., marked  $\frac{1}{4}$  on N. face, dug pits,  $18 \times 18 \times 12$  ins., E. and W. of stone  $5\frac{1}{2}$  ft. dist., and raised a mound of earth  $1\frac{1}{2}$  ft. high,  $3\frac{1}{2}$  ft. base. alongside.

50.00 Top of Ridge, bears N. E. and S. W. and descend.

N.B. T. 14 N R. 21 E. G. & S. R. M.

Chains.

71.90 Cross Road, bears, N.  $10^{\circ}$  W,

80.00 Set a sand stone  $16 \times 12 \times 8$  ins.  $11$  ins. in the ground for Cor. to Secs. 2, 3, 34 <sup>and</sup> 35, marked with 4 notches on W and 2 notches on E. edges, dug pits  $18 \times 18 \times 12$  ins. in each Sec.,  $5\frac{1}{2}$  ft. dist., and raised a mound of earth 2 ft. high  $4\frac{1}{2}$  ft. base. alongside.

from which

A Juniper 8 ins. diam. bears N.  $15^{\circ}$  E, 217 lbs. dist. marked T. 14 N, R. 21 E, S., 35 B. T.

A Juniper 7 ins. diam. bears S.  $27^{\circ}$  E, 72 lbs. dist. marked T. 14 N, R. 21 E, S., 2 B. T.

A Juniper 10 ins. diam. bears S.  $44^{\circ}$  W, 13 lbs. dist. marked T. 14 N, R. 21 E, S., 3 B. T.

No other trees within limits.

Land mountainous

Soil 3<sup>rd</sup> rate.

Timber of Pine and juniper.

Undergrowth of same.

Chains.

of 89° 54' E. on a true line between sections 2<sup>nd</sup> and 3<sup>rd</sup>.

Va. 13° 51' East.

Descend.

40.00

Set a sand stone 13 x 12 x 8 ins., 7 ins. in the ground, for  $\frac{1}{4}$  Sec. Cor., marked  $\frac{1}{4}$  on N. face, dug pits, 18 x 18 x 12 ins., E. and W. of stone 5 $\frac{1}{2}$  ft. dist., and raised a mound of earth 1 $\frac{1}{2}$  ft. high, 3 $\frac{1}{2}$  ft. base. alongside.

from which

A Juniper 9 ins. diam. bears N. 70° E., 156 lks. dist. marked  $\frac{1}{4}$  S. B. T.

A Juniper 11 ins. diam. bears S. 21° W., 212 lks. dist. marked  $\frac{1}{4}$  S. B. T.

55.00

Cross Gulch, 30 lks. wide, Course N. and ascend.

77.00

Leave Timber, Bears. N. and S.

80.00

Set a sand stone 14 x 12 x 8 ins. 7 ins. in the ground for Cor. to Secs. 1, 2, 3<sup>rd</sup> and 3<sup>rd</sup>, marked with S notch on N. and 1 notch on E. edges, dug pits 18 x 18 x 12 ins. in each Sec., 5 $\frac{1}{2}$  ft. dist., and raised a mound of earth 2 ft. high 4 $\frac{1}{2}$  ft. base. alongside.

Land mountainous

Soil 3<sup>rd</sup> rate.

Timber of Pine and Juniper

Undergrowth of same.

Chains.

S.  $89^{\circ}54'E$  on a true line between sections 1 <sup>and</sup> 36.

Va.  $13^{\circ}57'$  East.

Ascend.

36.00 Top of Ridge, bears  $N. \text{ and } S.$  and descend.

40.00 Set a sand stone  $12 \times 10 \times 4$  ins.,  
 ins. in the ground, for  $\frac{1}{4}$  Sec. Cor., marked  $\frac{1}{4}$  on  $N.$   
 face, dug pits,  $18 \times 18 \times 12$  ins.,  $E.$  and  $W.$  of stone  
 $5\frac{1}{2}$  ft. dist., and raised a mound of earth  $1\frac{1}{2}$  ft. high,  
 $3\frac{1}{2}$  ft. base. alongside.

68.50 Enter Silver Creek Cañon, bears  $N. 10^{\circ} E.$

70.68 <sup>Silver</sup> Cross Creek, 18 lks. wide, Course  $N. 10^{\circ} E.$

72.00 Leave Silver Creek Cañon and ascend.

80.00 The Cor. to Tps. 14 <sup>and</sup> 15 N. Rs. 21 & 22 E.

Land mountainous.

Soil 3<sup>rd</sup> rate

Vegetation, bunchgrass.

April 26<sup>th</sup> 1883.

N. B. T. 15 N. R. 21 E. G. & S. R. M.

Chains.

From the Cor. to Tps. 15 & 16 N. Rs. 21 & 22 E,  
previously described.

I run West on a random line on N. B. of Tp.

Va.  $130^{\circ}57'$  East.

I set temporary corners at every half mile, and at 5 miles  
65.91 chs. I arrive at a point 52 lks. South of Cor. to Tps,

N<sup>and</sup> 16 N., Rs. 20<sup>and</sup> 21 E,

which is a sandstone, set firmly  
in the ground, marked with 6 notches  
on each edge, with pits lengthwise  
on each line, N, S, E & W. of stone,  
6 ft. dist, and a mound of  
earth in good order,  
along side,

From which corner I run.

$S. 89^{\circ}56' E.$  on a true line between sections 6<sup>and</sup> 31.

Va.  $130^{\circ}57'$  East

Descend.

8.00 Cross Wash, 400 lks. wide, Course N. E. and ascend.

25.91 Set a sand stone  $20 \times 6 \times 6$  ins., 15  
ins. in the ground, for  $\frac{1}{4}$  Sec. Cor., marked  $\frac{1}{4}$  on N.

7.18. T. 15 N. R. 21 E. G. & S. R. M.

## Chains.

face, dug pits, 18 x 18 x 12 ins., E. and W. of stone  
5½ ft. dist., and raised a mound of earth 1½ ft. high,  
3½ ft. base. alongside.

52.00 Top of Ridge, bears N. and S. and descend.

64.50 Cross Gulch, 10 lks. wide, Course S. and ascend.

65.91 Set a Sand stone 30 x 14 x 8 ins. 26 ins. in  
the ground for Cor. to Secs. 5, 6, 31 and 32, marked  
with / notch on N. and S. notches on E. edges and  
raised a mound of stone. alongside, Pits impracticable.  
Land mountainous

Soil 3<sup>rd</sup> rate.

Timber of Juniper.

Vegetation, bunchgrass.

## Chains.

S. 89° 56' E. on a true line between sections 5 and 32.

Va. 13° 57' East.

Ascend.

4.00 Leave Timber, Bears. N. and S.

40.00 Set a sandstone 12 x 8 x 8 ins., 8 ins. in the ground, for  $\frac{1}{2}$  Sec. Cor., marked  $\frac{1}{2}$  on N. face, dug pits, 18 x 18 x 12 ins., E. and W. of stone  $5\frac{1}{2}$  ft. dist., and raised a mound of earth  $1\frac{1}{2}$  ft. high,  $3\frac{1}{2}$  ft. base, alongside. Over rolling land.

80.00 Set a sandstone 16 x 12 x 8 ins. 11 ins. in the ground for Cor. to Secs. 4, 5, 32 and 33, marked with 2 notches on W. and 4 notches on E. edges, dug pits 18 x 18 x 12 ins. in each Sec.,  $5\frac{1}{2}$  ft. dist., and raised a mound of earth 2 ft. high  $4\frac{1}{2}$  ft. base, alongside.

Land mountainous. and rolling.

Soil *iron* rate

Vegetation, bunchgrass.

N. B. T. 15 N. R. 21 E. G. & S. R. M.

Chains.

S. 89° 56' E. on a true line between sections 4 and 33.

Va. 18° 54' East.

Ascend. Over rolling land.

40.00 Set a Sand stone 10 x 8 x 8 ins., 7 ins. in the ground, for  $\frac{1}{4}$  Sec. Cor., marked  $\frac{1}{4}$  on N. face, dug pits, 18 x 18 x 12 ins., E. and W. of stone  $5\frac{1}{2}$  ft. dist., and raised a mound of earth  $1\frac{1}{2}$  ft. high,  $3\frac{1}{2}$  ft. base. alongside.

45.00 Top of Ridge, bears N. and S. and descend.

80.00 Set a Sand stone  $16 \times 12 \times 8$  ins. 11 ins. in the ground for Cor. to Secs. 3, 4, 33 and 34, marked with 3 notches on W. and 3 notches on E. edges, dug pits 18 x 18 x 12 ins. in each Sec.,  $5\frac{1}{2}$  ft. dist., and raised a mound of earth 2 ft. high 4 $\frac{1}{2}$  ft. base. alongside.

Land rolling. and mountainous.

Soil 3<sup>rd</sup> rate

Vegetation bunchgrasses.



Chains.

S. 89° 56' E. on a true line between sections 3 and 34,

Va. 130 54' East.

Descend. Over rolling land.

40.00 Set a sand stone 12 x 10 x 6 ins., 8 ins. in the ground, for  $\frac{1}{4}$  Sec. Cor., marked  $\frac{1}{4}$  on N. face, dug pits, 18 x 18 x 12 ins., E. and W. of stone  $5\frac{1}{2}$  ft. dist., and raised a mound of earth  $1\frac{1}{2}$  ft. high,  $3\frac{1}{2}$  ft. base. alongside.

60.00 Cross Fort Apache road, near P. W. and E.

80.00 Set a sand stone 20 x 6 x 6 ins., 15 ins. in the ground for Cor. to Secs. 2, 3, 34 and 35 marked with 4 notches on ~~N~~ and 2 notches on E. edges, dug pits 18 x 18 x 12 ins. in each Sec.,  $5\frac{1}{2}$  ft. dist., and raised a mound of earth 2 ft. high  $4\frac{1}{2}$  ft. base. alongside.

Land rolling.

Soil 3rd rate

Vegetation, bunchgrass.

N. B. T. 15 N. R. 21 E. G. & S. R. M.

ains.

S. 89° 56' E, on a true line between sections 21<sup>rd</sup> and 35<sup>th</sup>.

Va. 13° 54' East.

Over rolling land.

40.00

Set a sand stone 12 x 12 x 5 ins., 8 ins. in the ground, for  $\frac{1}{2}$  Sec. Cor., marked  $\frac{1}{2}$  on N. face, dug pits, 18 x 18 x 12 ins., E. and W. of stone 5  $\frac{1}{2}$  ft. dist., and raised a mound of earth 1  $\frac{1}{2}$  ft. high, 3  $\frac{1}{2}$  ft. base. alongside.

80.00

Set a sand stone 15 x 12 x 8 ins. 10 ins. in the ground for Cor. to Secs. 1, 2, 35<sup>th</sup> and 36, marked with notches on W and, notch on E. edges, dug pits 18 x 18 x 12 ins. in each Sec., 5  $\frac{1}{2}$  ft. dist., and raised a mound of earth 2 ft. high 4  $\frac{1}{2}$  ft. base. alongside.

Land rolling.

Soil good rate

Vegetation, bunchgrass.

N. B. T. 15 N. R. 21 E. G. & S. R. M.

Chains,

S. 89° 56' E, on a true line between sections 1 and 36,

Va. 13° 54' East.

Over rolling land.

40.00 Set a sandstone 18 x 18 x 4 ins., 12 ins. in the ground, for  $\frac{1}{2}$  Sec. Cor., marked  $\frac{1}{2}$  on N. face, dug pits, 18 x 18 x 12 ins., E. and W. of stone  $5\frac{1}{2}$  ft. dist., and raised a mound of earth  $1\frac{1}{2}$  ft. high,  $3\frac{1}{2}$  ft. base, alongside.

80.00 The Cor. to Tps. 15<sup>th</sup> and 16 N. Rs. 21 & 22 E.

Land rolling.

Soil 3<sup>rd</sup> rate

Vegetation, bunchgrasses.

I carefully examined the adjustments of my solar compass to-day, particularly the latitude and reversing apparatus, and found them correct.

April 28<sup>th</sup> 1883.

S. B. T. N. N. R. 18 E. G. & S. R. M.

Chains.

Before proceeding ~~Further~~ with the exteriors of this Tp., I made a change of 5 minutes in the latitude arc of my solar compass by subtracting same from the reading previously given, and at noon verified and corrected same by observation on the sun. I also further tested instrument by reversing.

From the Cor. to Tps. 14<sup>th</sup> and 15<sup>th</sup> N. Rs. 17 & 18 E., previously set by me.

I run East. on a random line on S. B. of Tp.

Va. 14° 00' East.

I set temporary corners at every half mile, and at 6 miles 4.26 chs. I arrive at a point 258 lks. South of Cor. to Tps,

14<sup>th</sup> and 15<sup>th</sup> N., Rs. 18<sup>th</sup> and 19<sup>th</sup> E., which is a sandstone, marked with scratches on each edge and with a mound of stone, in good order alongside -

From which corner I run.

S. 89° 42' W. on a true line between sections 1 and 36.

Va. 13° 30' East.

Descend.

Q. S. B. T. 15 N. R. 18 E. G. & S. R. M.

Chai Chains,

40.00 Set a post 3 ft. long, 3 ins. diam. with marked stone.  
 12 ins. in the ground, for  $\frac{1}{4}$  Sec. Cor., marked  $\frac{1}{4}$  S. on  
 N. face, dug pits, 18 x 18 x 12 ins., E. and W. of  
 post  $5\frac{1}{2}$  ft. dist., and raised a mound of earth  $1\frac{1}{2}$  ft.  
 high,  $3\frac{1}{2}$  ft. base around post.

67.00 Enter dry Lake, bars N.W. and S.E.

80.00 Set a post 4 ft. long, 4 ins. square, with marked stone.  
 12 ins. in the ground, for Cor. to Secs. 1, 2, 35<sup>2</sup> & 36  
 marked T. 15<sup>4</sup> S. 36, on N. E., R. 18<sup>6</sup>, S. 1  
 on S. E., S. 2 on S. W. and S. 35 on N. W. faces  
 with 5 notches on W and 1 notch on E. edges;  
 dug pits, 18 x 18 x 12 ins. in each Sec.,  $5\frac{1}{2}$  ft. dist.,  
 and raised a mound of earth 2 ft. high,  $4\frac{1}{2}$  ft. base  
 around post.

Land level.

Soil 3<sup>rd</sup> rate

Vegetation, bunchgrass.

S. B. T. 10 - N. R. 18 E. G. & S. R. M.

Chains.

S.  $89^{\circ}42'W$  on a true line between sections 2<sup>nd</sup> & 3<sup>rd</sup>

Var.  $13^{\circ}45'$  East

Over level land

40.00 Set a post 3 ft. long, 3 ins. diam. with marked stone.

12 ins. in the ground, for  $\frac{1}{2}$  Sec. Cor., marked  $\frac{1}{2}$  S. on

N. face, dug pits, 18 x 18 x 12 ins., E. and W. of post  $5\frac{1}{2}$  ft. dist., and raised a mound of earth  $1\frac{1}{2}$  ft. high,  $3\frac{1}{2}$  ft. base around post.

54.40 Lean dry dake, cross N<sup>th</sup> & ascend.

80.00 Set a sand stone  $24 \times 16 \times 8$  ins.  $18$  ins. in the ground for Cor. to Secs. 2, 3, 34<sup>th</sup> & 35, marked with 1 notch on N and 2 notch on E. edges, dug pits 18 x 18 x 12 ins. in each Sec.,  $5\frac{1}{2}$  ft. dist., and raised a mound of earth 2 ft. high  $4\frac{1}{2}$  ft. base alongside.

Land level. and rolling.

Soil 3<sup>rd</sup> rate

Vegetation, bunchgrasses.

S. B. T. 15 N. R. 18 E. G. &amp; S. R. M.

## Chains.

S.  $59^{\circ} 42' W$  on a true line between sections 3<sup>rd</sup> and 34<sup>th</sup>

Va. 13045 East

Ascend.

35.40 Foot of Bluff, from N. <sup>2nd</sup> and  
ascend abruptly, through brush.40.00 Set a sand stone  $20 \times 18 \times 6$  ins., 15  
ins. in the ground, for  $\frac{1}{4}$  Sec. Cor., marked  $\frac{1}{4}$  on W.  
face, and raised a mound of stone. alongside. Pits  
impracticable.80.00 Set a sand stone  $24 \times 12 \times 8$  ins., 18 ins. in  
the ground for Cor. to Secs. 3, 4, 33<sup>rd</sup> and 34<sup>th</sup>, marked  
with 3 notch<sup>s</sup> on W and 3 notch<sup>s</sup> on E. edges, dug pits  
 $18 \times 18 \times 12$  ins. in each Sec.,  $5\frac{1}{2}$  ft. dist., and raised a  
mound of earth 2 ft. high  $4\frac{1}{2}$  ft. base. alongside.

Land rolling.

Soil 3<sup>rd</sup> rate

Vegetation, bunchgrass.

S. B. T. 15 N. R. 18 E. G. & S. R. M.

Chains.

S. 89° 42' W. on a true line between sections 44 and 33,  
Va. 14° 00' East.

Ascend.

16.61 A cabin, bears S. 3, 18 chs. dist.

24.00 Top of Ridge, bears S. W. and descend.

40.00 Set a Sand stone 22 x 12 x 6 ins., 16  
ins. in the ground, for 1/4 Sec. Cor., marked 1/4 on N.  
face, dug pits, 18 x 18 x 12 ins., E. and W. of stone  
5 1/2 ft. dist., and raised a mound of earth 1 1/2 ft. high,  
3 1/2 ft. base. alongside. from which

A Pine 12 ins. diam. bears N. 62° E, 71 lks. dist.  
marked 1/4 S. B. T.

A Cedar 8 ins. diam. bears S. 10° W, 48 lks. dist.  
marked 1/2 S. B. T.

80.00 Set a Sand stone 24 x 8 x 6 ins. 1 Pins. in  
the ground for Cor. to Secs. 4, 5, 32 and 33, marked  
with 2 notch 20 on W and 4 notch 50 on E. edges and  
raised a mound of stone. alongside. Pits impracticable.  
from which

A Pine 8 ins. diam. bears N. 62 1/2° E, 79 lks. dist.  
marked T. N. R. 18 E, S., 33 B. T.

A Pine 12 ins. diam. bears S. 15° W, 122 lks. dist.



S. B. T. 15 N. R. 18 E. G. &amp; S. R. M.

Chains.

marked T. 14 N. R. 18 E., S., 5 B. T.

A Cedar 6 ins. diam. bears S. 60° 10' E., 60 lks. dist.

marked T. 14 N. R. 18 E., S., 4 B. T.

No other trees within limits.

Land mountainous

Soil 3<sup>m</sup> rate.

Timber of Pine and cedar.

Vegetation, bunchgrasses.

S. 89° 42' W. on a true line between sections 5<sup>and</sup> 32.

Va. 14° 10' East.

Descend.

6.00 Enter Flat, bear N. 10° E.

40.00 Set a sand stone 14 x 8 x 4 ins., 9 ins. in the ground, for  $\frac{1}{4}$  Sec. Cor., marked  $\frac{1}{4}$  on N. face, dug pits, 18 x 18 x 12 ins., E. and W. of stone 5 $\frac{1}{2}$  ft. dist., and raised a mound of earth 1 $\frac{1}{2}$  ft. high, 3 $\frac{1}{2}$  ft. base. alongside.

58.00 Lean Flat, bear N. <sup>and</sup> S. <sup>and</sup> ascend.

80.00 Set a lime stone 24 x 12 x 6 ins., 8 ins. in the ground for Cor. to Secs. 5, 6, 31 <sup>and</sup> 32, marked with / notch on N and 5 notch on E. edges, dug pits 18 x 18 x 12 ins. in each Sec., 5 $\frac{1}{2}$  ft. dist., and raised a

Chains

mound of earth 2 ft. high  $4\frac{1}{2}$  ft. base. alongside.

Land rolling.

Soil 3<sup>oa</sup> rate

Vegetation, bunchy grass.

S.  $89^{\circ}42'W$ , on a true line between sections 6 <sup>and 31</sup>.

Va.  $14^{\circ}10'$  East.

Ascend.

15.00 Top of Spur, bears S.  $10^{\circ}W$ . and descend.

40.00 Set a post 3 ft. long, 3 ins. diam. with marked stone.  
12 ins. in the ground, for  $\frac{1}{4}$  Sec. Cor., marked  $\frac{1}{4}$  S. on  
N. face, dug pits, 18 x 18 x 12 ins., E. and W. of  
post  $5\frac{1}{2}$  ft. dist., and raised a mound of earth  $1\frac{1}{2}$  ft.  
high,  $3\frac{1}{2}$  ft. base around post.

84.26 The Cor. to Tps. 14 <sup>and 15</sup> N. Rs. 17 & 18 E.

Land rolling.

Soil 3<sup>oa</sup> rate

Vegetation, bunchy grass.

May 19<sup>th</sup> 1883.

E. B. T. 15 N. R. 18 E. G. &amp; S. R. M.

Chains.

From the Cor. to Tps. 14<sup>th</sup> & 15<sup>th</sup> N. Rs. 18 & 19 E.

previously ~~marked~~ set by me -

I run North on a random line on E. B. of Tp.

Va.  $13^{\circ} 30'$  East.

I set temporary corners at every half mile, and at 6 miles  
.84 chs. I arrive at a point 92 lks. West. of Cor. to Tps,

15<sup>th</sup> & 16<sup>th</sup> N., R. 18<sup>th</sup> & 19<sup>th</sup> E, which is a

sandstone, set firmly in the ground,

marked with 6 notches on each edge

& with a stone mound in good order

along side;

from which

A Pine 10 ins. diam. bears N.  $35^{\circ}$  E, 89 lks. dist.

marked T. 16<sup>th</sup> N. R. 19<sup>th</sup> E, S. 31 B. T.

From which corner I run.

S. 6' W. on a true line between sections 1 & 6.

Va.  $13^{\circ} 30'$  East.

Descend.

5.24 Cross Wash, 10 lks. wide, Course  $N. 87^{\circ}$  and ascend.

E. B. T. 15 N. R. 18 E. G. &amp; S. R. M.

## Chains.

40.54 Set a post 3 ft. long, 3 ins. diam. with marked stone.  
 12 ins. in the ground, for  $\frac{1}{2}$  Sec. Cor., marked  $\frac{1}{2}$  S. on  
 W. face, dug pits, 18 x 18 x 12 ins., N. and S. of  
 post  $5\frac{1}{2}$  ft. dist., and raised a mound of earth  $1\frac{1}{2}$  ft.  
 high,  $3\frac{1}{2}$  ft. base around post.

74.09 Head of Ravine. Course N. 10° W.

80.84 Set a sand stone  $20 \times 12 \times 8$  ins. 15 ins. in  
 the ground for Cor. to Secs. 1, 6, 7 and 12, marked  
 with 5 notches on S. and 1 notch on W. edges and  
 raised a mound of stone. alongside. Pits impracticable.  
 Land rolling.

Soil 3rd rate

Vegetation, bunchgrass.

Chains,

S. 6' W. on a true line between sections 7<sup>and</sup> 12,

Va. 13° 20'

East.

Ascend.

40.00

Set a sand stone 16 x 10 x 8 ins., 11 ins. in the ground, for  $\frac{1}{2}$  Sec. Cor., marked  $\frac{1}{2}$  on W. face, dug pits, 18 x 18 x 12 ins., N. and S. of stone  $5\frac{1}{2}$  ft. dist., and raised a mound of earth  $1\frac{1}{2}$  ft. high,  $3\frac{1}{2}$  ft. base. alongside.

80.00

Set a sand stone 15 x 9 x 7 ins. 10 ins. in the ground for Cor. to Secs. 7, 12, 13<sup>and</sup> 18, marked with 4 notches on S. and 2 notches on E. edges, dug pits 18 x 18 x 12 ins. in each Sec.,  $5\frac{1}{2}$  ft. dist., and raised a mound of earth 2 ft. high  $4\frac{1}{2}$  ft. base. alongside.

Land rolling.

Soil 3<sup>rd</sup> rate

Vegetation, bunchgrasses.

E. B. T. 15 N. R. 16 E. G. &amp; S. R. M.

Chains.

S. 6' W. on a true line between sections 13<sup>and</sup> 16.

Va. 13° 30' East.

Ascend.

40.00 Set a sand stone 19 x 15 x 3 ins., 14 ins. in the ground, for  $\frac{1}{4}$  Sec. Cor., marked  $\frac{1}{4}$  on W. face, dug pits, 18 x 18 x 12 ins., N. and S. of stone  $5\frac{1}{2}$  ft. dist., and raised a mound of earth  $1\frac{1}{2}$  ft. high,  $3\frac{1}{2}$  ft. base. alongside.

80.00 Set a sand stone 20 x 11 x 4 ins. 15 ins. in the ground for Cor. to Secs. 13, 16, 19<sup>and</sup> 24, marked with 3 notches on S. and 3 notches on ~~the~~ edges, dug pits 18 x 18 x 12 ins. in each Sec.,  $5\frac{1}{2}$  ft. dist., and raised a mound of earth 2 ft. high  $4\frac{1}{2}$  ft. base. alongside.

Land rolling.

Soil ~~is~~ rate

Vegetation, bunchgrass.

C. B. T. W-N. R. 18 E. G. &amp; S. R. M.

## Chains.

S. ~~W.~~ on a true line between sections 19 <sup>and</sup> 24

Va. 130 30' East.

Ascend.

40.00 Set a sand stone  $15 \times 10 \times 6$  ins., 10 ins. in the ground, for  $\frac{1}{4}$  Sec. Cor., marked  $\frac{1}{4}$  on W. face, dug pits,  $18 \times 18 \times 12$  ins., N. and S. of stone  $5\frac{1}{2}$  ft. dist., and raised a mound of earth  $1\frac{1}{2}$  ft. high,  $3\frac{1}{2}$  ft. base. alongside.

80.00 Set a sand stone  $16 \times 12 \times 6$  ins. 11 ins. in the ground for Cor. to Secs. 19, 24, 25 <sup>and</sup> 30, marked with 2 notch  $\infty$  on S. and 4 notches on N. edges, dug pits  $18 \times 18 \times 12$  ins. in each Sec.,  $5\frac{1}{2}$  ft. dist., and raised a mound of earth 2 ft. high  $4\frac{1}{2}$  ft. base. alongside.

Land rolling.

Soil 300 rate

Vegetation, bunchgrass.

E. B. T. 15 N. R. 18 E. G. &amp; S. R. M.

Chains.

S.  $6^{\circ}$  W. on a true line between sections 25<sup>th</sup> & 30.

Va. 13030' East.

Ascend.

36.00 Top of Divide, cross E.  $9^{\circ}$  W. and descend.

40.00 Set a post 3 ft. long, 3 ins. diam. with marked stone.  
12 ins. in the ground, for  $\frac{1}{2}$  Sec. Cor., marked  $\frac{1}{2}$  S. on  
W. face, dug pits, 18 x 18 x 12 ins., N. and S. of  
post  $5\frac{1}{2}$  ft. dist., and raised a mound of earth  $1\frac{1}{2}$  ft.  
high,  $3\frac{1}{2}$  ft. base around post.

74.00 Near Taveland and descend.

80.00 Set a sand stone  $28 \times 12 \times 3$  ins. 21 ins. in  
the ground for Cor. to Secs. 25, 30, 31<sup>st</sup> & 36, marked  
with 1 notch on S. and 5 notches on N. edges and  
raised a mound of stone. alongside, Pits impracticable.  
from which

A Pine 8 ins. diam. bears N.  $70^{\circ}$  W., 54 lbs. dist.  
marked T. 15 N. R. 18 E., S., 25 B. T.

A Juniper 15 ins. diam. bears N.  $75^{\circ}$  E., 66 lbs. dist.  
marked T. 15 N. R. 19 E., S., 30 B. T.

No other trees within limits.

Land mountainous and rolling.

Soil 3<sup>rd</sup> rate.

Timber of Pine &amp; Juniper.

Vegetation, bunchgrass.



E. B. T. vs N. R. vs E. G. & S. R. M.

Chains.

S. 6' W. on a true line between sections 31 and 36.  
 Va. 130 30' East.

Descend.

33.00 Foot of hill, bears N. 63° E. and ascend

40.00 Set a sandstone 16 x 10 x 3 ins., 11 ins. in the ground, for 1/4 Sec. Cor., marked 1/4 on W. face, dug pits, 18 x 18 x 12 ins., N. and S. of stone 5 1/2 ft. dist., and raised a mound of earth 1 1/2 ft. high, 3 1/2 ft. base. alongside.

59.00 Ascend. gradually.

80.00 The Cor. to Tps. 14 and 15 N. Rs. 18 & 19 E.

Land mountainous and level.

Soil good rate.

Timber of Pine and Juniper.

Vegetation, bunchgrass.

I carefully examined the adjustments of my solar compass to-day, particularly the latitude and reversing apparatus, and found them correct.

May 21<sup>st</sup> 1883.

14) 57410  
 28  
 37

14) 57410  
 14  
 136  
 136

N. B. T. 15 N. R. 18 E. G. & S. R. M.

Chains.

Before proceeding further with the exteriors of this Tp., I made a change of 5 minutes in the latitude arc of my solar compass by adding same to the reading previously given, and at noon verified and corrected same by observation on the sun. I also further tested instrument by reversing.

From the Cor. to Tps. 15<sup>th</sup> & 16 N. Rs. 17 & 18<sup>E</sup>, previously set by me.

I run East. on a random line on N. B. of Tp.

Va. 13° 30' East.

I set temporary corners at every half mile, and at 6 miles 2 7/8 chs. I arrive at a point 3/2 lks. South of Cor. to Tps,

15<sup>th</sup> & 16 N., Rs. 18<sup>th</sup> & 19<sup>E</sup>, previously described.

From which corner I run.

S. 89° 38' W. on a true line between sections 1<sup>st</sup> & 36.

Va. 13° 30' East.

Descend.

8.50 Cross Wash, 10 lks. wide, Course N. 20 W. and ascend.

25.00 Top of Spur, bears N. and S. and descend.

40.00 Set a sand stone 16 x 8 x 6 ins., 11 ins. in the ground, for 1/2 Sec. Cor., marked 1/2 on N. face, and raised a mound of stone. alongside. Pits impracticable.

ains.

Cha

from which

A Pine 8 ins. diam. bears S. 21° E, 45 lks. dist.  
marked  $\frac{1}{2}$  S. B. T.

A Pine 8 ins. diam. bears N. 32° W, 76 lks. dist.  
marked  $\frac{1}{2}$  S. B. T.

44.75 Cross Wash, 20 lks. wide, Course N. 50° E and ascend.

80.00 Set a post 4 ft. long, 4 ins. square, with marked stone.

12 ins. in the ground, for Cor. to Secs. 1, 2, 35<sup>th</sup> & 36,

marked T. 164 S. 66, on N. E., R. 18 E, S. 1

on S. E., S. 2 on S. W. and S. 35 on N. W. faces,

with 5 notches on W and 1 notch on E. edges;

dug pits, 18 x 18 x 12 ins. in each Sec., 5 $\frac{1}{2}$  ft. dist.,

and raised a mound of earth 2 ft. high, 4 $\frac{1}{2}$  ft. base  
around post.

Land mountainous and rolling.

Soil 3<sup>rd</sup> rate.

Timber of Pine.

Vegetation, bunchgrass.

N. B. T. W. N. R. 18 E. G. &amp; S. R. M.

ins.

S. 89° 38' W on a true line between sections 2<sup>nd</sup> and 35.

Va. 13° 45' East.

Ascend.

40.00 Set a sand stone 30 x 20 x 4 ins., 22 ins. in the ground, for  $\frac{1}{4}$  Sec. Cor., marked  $\frac{1}{4}$  on N. face, and raised a mound of stone, alongside. Pits impracticable.

4.00 Top of Ridge, bears N. 20° W. and descend.

1.00 Set a post 4 ft. long, 4 ins. square, with marked stone. 12 ins. in the ground, for Cor. to Secs. 2, 3, 34<sup>th</sup> and 35, marked T. 164 S. 35, on N. E., R 186, S. 2 on S. E., S. 3 on S. W. and S. 34 on N. W. faces, with 4 notches on W and 2 notches on E. edges; dug pits, 18 x 18 x 12 ins. in each Sec., 5 $\frac{1}{2}$  ft. dist., and raised a mound of earth 2 ft. high, 4 $\frac{1}{2}$  ft. base around post.

Land rolling, and mountainous.

Soil 300 rate

Vegetation, bunchgrass.

N. B. T. 15 N. R. 18 E. G. &amp; S. R. M.

## Chains.

S. 89° 38' W. on a true line between sections 3 <sup>and</sup> 34.

Va. 13° 45' East.

Descend.

35.75 Cross Wash, 10 lks. wide, Course N. and ascend.

40.00 Set a post 3 ft. long, 3 ins. diam. with marked stone.  
12 ins. in the ground, for  $\frac{1}{4}$  Sec. Cor., marked  $\frac{1}{4}$  S. on  
N. face, dug pits, 18 x 18 x 12 ins., E. and W. of  
post  $5\frac{1}{2}$  ft. dist., and raised a mound of earth  $1\frac{1}{2}$  ft.  
high,  $3\frac{1}{2}$  ft. base around post.

45.00 Top of Spur, bears N. 20° E. and descend.

65.00 Cross Wash, 10 lks. wide, Course N. 30° E. and ascend.

80.00 Set a post 4 ft. long, 4 ins. square, with marked stone,  
12 ins. in the ground, for Cor. to Secs. 3, 4, 33 <sup>and</sup> 34,  
marked T. 16 4 S. 34, on N. E., R. 18 6, S. 3  
on S. E. S. <sup>5, 15 N.</sup> 4 on S. W. and S. 33 on N. W. face,  
with 3 notches on W. and 3 notch 20 on E. edges;  
dug pits, 18 x 18 x 12 ins. in each Sec.,  $5\frac{1}{2}$  ft. dist.,  
and raised a mound of earth 2 ft. high,  $4\frac{1}{2}$  ft. base  
around post.  
Land mountainous. and rolling.

Soil 3 on rate

Vegetation, bunchgrass.

## N.B. T. 15 N. R. 18 E. G. &amp; S. R. M.

## Chains.

S. 89° 38' W. on a true line between sections 4<sup>Sec</sup> 33

Va. 13° 45' East.

Ascend.

39.00 Top of Ridge, bears N. 10° E and descend.

40.00 Set a post 3 ft. long, 3 ins. diam. with marked stone.  
12 ins. in the ground, for  $\frac{1}{2}$  Sec. Cor., marked  $\frac{1}{2}$  S. on  
N. face, dug pits, 18 x 18 x 12 ins., E. and W. of  
post  $5\frac{1}{2}$  ft. dist., and raised a mound of earth  $1\frac{1}{2}$  ft.  
high,  $3\frac{1}{2}$  ft. base around post.

67.50 Cross Wash, 12 lks. wide, Course N. 10° E and ascend.

75.00 Top of Spur, bears N. and descend.

80.00 Set a Sand stone 16 x 10 x 8 ins. 11 ins. in  
the ground for Cor. to Secs. 4, 5, 32<sup>Sec</sup> 33, marked  
with 2 notches on ~~N~~ and 4 notches on E. edges, dug pits  
18 x 18 x 12 ins. in each Sec.,  $5\frac{1}{2}$  ft. dist., and raised a  
mound of earth 2 ft. high  $4\frac{1}{2}$  ft. base alongside.

Land mountainous.

Soil 3<sup>rd</sup> rate

Vegetation, bunchgrasses.

## Chains.

S. 89° 38' W. on a true line between sections 5<sup>and</sup> 32.

Va. 14° 00' East.

Descend.

P. 40 Cross Wash, 10 lks. wide, Course N 67 E and ascend.

40.00 Set a post 3 ft. long, 3 ins. diam. with marked stone.

12 ins. in the ground, for  $\frac{1}{2}$  Sec. Cor., marked  $\frac{1}{2}$  S. on

N. face, dug pits, 18 x 18 x 12 ins., E. and W. of post  $5\frac{1}{2}$  ft. dist., and raised a mound of earth  $1\frac{1}{2}$  ft. high,  $3\frac{1}{2}$  ft. base around post.

80.00

Set a sand stone  $20 \times 20 \times 4$  ins. 15 ins. in the ground for Cor. to Secs. 5, 6, 31<sup>and</sup> 32, marked with 1 notch on N and 5 notches on E. edges and raised a mound of stone. alongside. Pits impracticable. Land mountainous.

Soil *gr* rate

Vegetation, bunch grass.

N. B. T. 15 N. R. 18 E. G. &amp; S. R. M.

Chains.

S.  $87^{\circ} 38' W$ , on a true line between sections 6 <sup>and</sup> 31.

Va. 14' 00" East

Ascend.

27.00 Top of Ridge, bears N.  $20^{\circ} W$ , and descend.40.00 Set a Sandstone  $15 \times 12 \times 10$  ins.  $\times 2$   
ins. in the ground, for  $\frac{1}{2}$  Sec. Cor., marked  $\frac{1}{2}$  on N.  
face, and raised a mound of stone. alongside. Pits  
impracticable.82.76 The Cor. to Tps. 15 <sup>and</sup> 16 N. Rs. 17 & 18 E.

Land mountainous.

Soil 3<sup>rd</sup> rateVegetation, *gum* *miss.*, May 22 <sup>and</sup> 1888.



W. B. T. 17 N. R. 19 E. G. &amp; S. R. M.

chains.

Standard  
From the Cor. to Tps. 17 N. Rs. 18 & 19 E,

which is a post, set firmly in the ground,  
marked S. E. T. 17 N. or N.;

R. 18 E, S. 31 or E. & R. 17 E, S. 36 or W,  
faces, with 6 notches on N, E. & W. faces;

with pits N, E. & W. of post, 6 ft.

dist., and a mound of  
earth, in good order, around post,

I run North on a random line on W. B. of Tp.

Va.  $14^{\circ} 15'$  East.

I set temporary corners at every half mile, and at 5 miles  
78.12 chs. I arrive at a point 197 lks. East. of Cor. to Tps,

17<sup>th</sup> and 18<sup>th</sup> N., R. 18<sup>th</sup> and 19<sup>th</sup> E, which is  
a sandstone, set firmly in the ground,  
marked with 6 notches on each edge,  
with pits lengthwise on each line,  
N, S, E. & W. of stone, 6 ft. dist., and a mound  
of earth, in good order, along side

From which corner I run.

U. S. T. 17 N. R. 19 E. G. & S. R. M.

S. 14<sup>th</sup> E. on a true line between sections 1<sup>st</sup> and 6.

Va. 13° 45' East.

Descend.

12 Set a sand stone 19 x 10 x 4 ins., 14 ins. in the ground, for  $\frac{1}{4}$  Sec. Cor., marked  $\frac{1}{4}$  on W. face, dug pits, 18 x 18 x 12 ins., N. and S. of stone  $5\frac{1}{2}$  ft. dist., and raised a mound of earth  $1\frac{1}{2}$  ft. high,  $3\frac{1}{2}$  ft. base. alongside.

12 Set a sand stone 15 x 7 x 3 ins. 10 ins. in the ground for Cor. to Secs. 1, 6, 7<sup>th</sup> and 12, marked with 5 notches on S. and 1 notch on W. edges, dug pits 18 x 18 x 12 ins. in each Sec.,  $5\frac{1}{2}$  ft. dist., and raised a mound of earth 2 ft. high  $4\frac{1}{2}$  ft. base. alongside.

Land rolling.

Soil 3<sup>rd</sup> rate

Vegetation, bunchgrass.

W. B. T. 17 N. R. 19 E. G. & S. R. M.

Chains.

S. 14' E. on a true line between sections 7<sup>and</sup> 12.

Va. 130° 45' East.

Descend.

40.00

Set a sand stone 17 x 10 x 4 ins., 11 ins. in the ground, for 1/2 Sec. Cor., marked 1/2 on W. face, dug pits, 18 x 18 x 12 ins., N. and S. of stone 5 1/2 ft. dist., and raised a mound of earth 1 1/2 ft. high, 3 1/2 ft. base. alongside.

80.00

Set a post 4 ft. long, 4 ins. square, with marked stone, 12 ins. in the ground, for Cor. to Secs. 7, 12, 13<sup>and</sup> 18, marked T. 17 N. S. 7, on N. E., R. 19 E., S. 18 on S. E., S. 13 on S. W. and S. 12 on N. W. faces, with 4 notches on S. and 2 notches on W. edges; dug pits, 18 x 18 x 12 ins. in each Sec., 5 1/2 ft. dist., and raised a mound of earth 2 ft. high, 4 1/2 ft. base around post.

Land rolling.

Soil 3<sup>me</sup> rate

Vegetation, bunchgrass.

W. B. T. 17 N. R. 19 E. G. &amp; S. R. M.

Chains.

S. 14 'E. on a true line between sections 13 and 18.

Va.  $13^{\circ} 34'$  East.

Descend.

15.40 Cross Wash, 15 lks. wide, Course  $N. 40^{\circ}$  and ascend.40.00 Set a Sand stone  $16 \times 10 \times 5$  ins., 11 ins. in the ground, for  $\frac{1}{4}$  Sec. Cor., marked  $\frac{1}{4}$  on W. face, and raised a mound of stone alongside. Pits impracticable.80.00 Set a Sand stone  $15 \times 12 \times 3$  ins. 10 ins. in the ground for Cor. to Secs. 13, 18, 19 and 24, marked with 3 notches on S. and 3 notches on N. edges, dug pits  $18 \times 18 \times 12$  ins. in each Sec.,  $5\frac{1}{2}$  ft. dist., and raised a mound of earth 2 ft. high  $4\frac{1}{2}$  ft. base. alongside.

Land rolling.

Soil 3<sup>rd</sup> rate

Vegetation, bunchgrass.

174  
BOOK 1911  
W. B. T. 17 N. R. 19 E. G. & S. R. M.

Chains.

N. 14' E. on a true line between sections 19<sup>Sec</sup> & 24.

Va. 130' 30' East.

Ascend.

40.00 Set a sand stone 20 x 9 x 4 ins., 15  
ins. in the ground, for  $\frac{1}{2}$  Sec. Cor., marked  $\frac{1}{2}$  on W.  
face, dug pits, 18 x 18 x 12 ins., N. and S. of stone  
5 $\frac{1}{2}$  ft. dist., and raised a mound of earth 1 $\frac{1}{2}$  ft. high,  
3 $\frac{1}{2}$  ft. base. alongside.

80.00 Set a post 4 ft. long, 4 ins. square, with marked stone,  
12 ins. in the ground, for Cor. to Secs. 19, 24, 25<sup>Sec</sup> & 30,  
marked T. 17 N. S. 19, on N. E., R. 19 E., S. 30  
on S. E. S. 25 on S. W. and S. 24 on N. W. faces,  
with 2 notches on S. and 4 notches on N. edges;  
dug pits, 18 x 18 x 12 ins. in each Sec., 5 $\frac{1}{2}$  ft. dist.,  
and raised a mound of earth 2 ft. high, 4 $\frac{1}{2}$  ft. base  
around post.

Land rolling.

Soil *3<sup>me</sup>* rate

Vegetation, bunchgrass

W. B. T. 17 N. R. 19 E. G. & S. R. M.

Chains.

S. 14' E. on a true line between sections 25 & 30.

Va. 13° 30' East.

Ascend.

40.00

Set a Sand stone 21 x 12 x 4 ins., 16 ins. in the ground, for  $\frac{1}{2}$  Sec. Cor., marked  $\frac{1}{2}$  on W. face, and raised a mound of stone. alongside. Pits impracticable.

80.00

Set a Sand stone 20 x 12 x 3 ins. 15 ins. in the ground for Cor. to Secs. 25, 30, 31 and 36, marked with / notch on S. and 5 notches on W. edges, dug pits 18 x 18 x 12 ins. in each Sec., 5 $\frac{1}{2}$  ft. dist., and raised a mound of earth 2 ft. high 4 $\frac{1}{2}$  ft. base. alongside.

Land rolling.

Soil *fine* rate

Vegetation, bunchgrass.

W. B. T. 17 N. R. 19 E. G. & S. R. M.

Chains.

S. 14' E. on a true line between sections 31 and 36.

Va. 13° 36' East.

Ascend.

40.00

Set a sand stone 18 x 10 x 4 ins., 12 ins. in the ground, for  $\frac{1}{4}$  Sec. Cor., marked  $\frac{1}{4}$  on W. face, dug pits, 18 x 18 x 12 ins., N. and S. of stone  $5\frac{1}{2}$  ft. dist., and raised a mound of earth  $1\frac{1}{2}$  ft. high,  $3\frac{1}{2}$  ft. base. alongside.

80.00

<sup>Standard</sup>  
The Cor. to Tps.

17 N. Rs. 18 & 19 E.

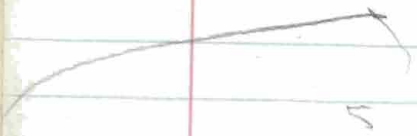
Land rolling.

Soil 3<sup>m</sup> rate.

Timber of, Juniper.

Vegetation, bunchgrass.

June 19<sup>th</sup> 1883.



W. B. T. 16 N. R. 18 E. G. &amp; S. R. M.

## Chains.

Before proceeding further with the exteriors of this T<sup>p</sup>., I made a change of ~~10~~<sup>5</sup> minutes in the latitude arc of my solar compass by subtracting same from the reading previously given, and at noon verified and corrected same by observation on the sun. I also further tested instrument by reversing.

From the Cor. to Tps. 15<sup>th</sup> & 16 N. Rs. 17 & 18<sup>th</sup>,  
previously set by me. 1 run,

North on a true line between sections 31<sup>st</sup> & 36.

Va. 13° 30' East.

Ascend.

- 18.00 Top of Spur, bears N. 30° W. and descend.
- 32.25 Cross Wash, 20 lks. wide, Course N. W. and ascend.
- 40.00 Set a sandstone 24 x 12 x 6 ins., 18 ins. in the ground, for  $\frac{1}{2}$  Sec. Cor., marked  $\frac{1}{2}$  on W. face, and raised a mound of stone alongside. Pits impracticable.
- 77.00 Top of Spur, bears N. 37° W. and descend.
- 80.00 Set a lime stone 14 x 10 x 6 ins. 9 ins. in the ground for Cor. to Secs. 25, 30, 31<sup>st</sup> & 36 marked with 1 notch on S. and 5 notches on W. edges, dug pits 18 x 18 x 12 ins. in each Sec., 5 $\frac{1}{2}$  ft. dist., and raised a mound of earth 2 ft. high 4 $\frac{1}{2}$  ft. base. alongside.



W. B. T. 16 N. R. 18 E. G. & S. R. M.

Chains.

Land mountainous.

Soil  $\text{3 m}$  rate

Vegetation, bunchgrasses.

---

North on a true line between sections 25 and 30.

Va.  $14^{\circ} 50'$  East.

Descend.

12.30 Cross Wash, 10 lks. wide, Course  $N. 20^{\circ} W.$  and ascend.

40.50 Set a Sand stone  $18 \times 14 \times 6$  ins., 12 ins. in the ground, for  $\frac{1}{2}$  Sec. Cor., marked  $\frac{1}{2}$  on W. face, dug pits,  $18 \times 18 \times 12$  ins., N. and S. of stone  $5\frac{1}{2}$  ft. dist., and raised a mound of earth  $1\frac{1}{2}$  ft. high,  $3\frac{1}{2}$  ft. base, alongside.

43.00 Top of Spur, bears  $N. 17^{\circ} W.$  and descend.

80.00 Set a Sand stone  $20 \times 10 \times 6$  ins. 15 ins. in the ground for Cor. to Secs. 19, 24, 25 and 30, marked with 2 notch  $\infty$  on S. and 4 notches  $\infty$  on M edges and raised a mound of stone. alongside. Pits impracticable.  
Land mountainous.

Soil  $H \text{ ca}$  rate

Vegetation, bunchgrasses.

Chains.

North on a true line between sections 19 <sup>and</sup> 24.

Va.  $14^{\circ}00'$  East.

Descend.

27.70 Cross Wash, 15 lks. wide, Course  $N. 30^{\circ} W.$  and ascend.

40.00 Set a sand stone  $14 \times 10 \times 6$  ins., 9 ins. in the ground, for  $\frac{1}{4}$  Sec. Cor., marked  $\frac{1}{4}$  on W. face, and raised a mound of stone. alongside. Pits impracticable.

80.00 Set a sand stone  $24 \times 14 \times 6$  ins. 18 ins. in the ground for Cor. to Secs. 13, 18, 19 <sup>and</sup> 24, marked with 3 notch  $\infty$  on S. and 3 notch  $\infty$  on W. edges and raised a mound of stone. alongside, Pits impracticable.

Land rolling.

Soil 3<sup>rd</sup> rate

Vegetation, bunch grass.

W. B. T. 16 N. R. 18 E. G. & S. R. M.

Chains.

North on a true line between sections 13<sup>and</sup> 18.

Va. 14°00' East.

Ascend.

40.00 Set a Sand stone 30 x 25 x 8 ins., 22 ins. in the ground, for  $\frac{1}{4}$  Sec. Cor., marked  $\frac{1}{4}$  on W. face, and raised a mound of stone. alongside. Pits impracticable.

75.00 Top of Spur, bears N. 60° E. and descend.

30.00 Set a Sand stone 30 x 30 x 4 ins. 22 ins. in the ground for Cor. to Secs. 7, 12, 13<sup>and</sup> 18, marked with 4 notches on S. and 2 notches on E. edges and raised a mound of stone. alongside. Pits impracticable. Land mountainous.

Soil 4<sup>ca</sup> rate

Vegetation, bunchgrass.

W. B. T. 16 N. R. 18 E. G. & S. R. M.

Chains.

North on a true line between sections 7<sup>and</sup> 12,  
Va. 14° 15' East.

Descend.

40.00

Set a *lime* stone 36 x 10 x 8 ins., 27  
ins. in the ground, for  $\frac{1}{4}$  Sec. Cor., marked  $\frac{1}{4}$  on W.  
face, dug pits, 18 x 18 x 12 ins., N. and S. of stone  
5 $\frac{1}{2}$  ft. dist., and raised a mound of earth 1 $\frac{1}{2}$  ft. high,  
3 $\frac{1}{2}$  ft. base. alongside.

80.00

Set a *sand* stone 16 x 10 x 6 ins. 11 ins. in  
the ground for Cor. to Secs. 1, 6, 7<sup>and</sup> 12, marked  
with 5 notches on S. and 1 notch on N. edges, dug pits  
18 x 18 x 12 ins. in each Sec., 5 $\frac{1}{2}$  ft. dist., and raised a  
mound of earth 2 ft. high 4 $\frac{1}{2}$  ft. base. alongside.

Land rolling. And mountainous.

Soil 3<sup>rd</sup> rate

Vegetation, bunchgrass.

Chains.

North on a true line between sections 1 and 6.

Va.  $14^{\circ}00'$  East.

Descend.

2.00 Cross Wash, 6 lks. wide, Course  $N 10^{\circ} W$  and ascend.

40.00 Set a sand stone  $20 \times 12 \times 10$  ins., 15 ins. in the ground, for  $\frac{1}{2}$  Sec. Cor., marked  $\frac{1}{2}$  on W. face, and raised a mound of stone alongside. Pits impracticable.

47.00 Top of Ridge, bears  $N. 60^{\circ} W.$  and descend.

94.20 Intersect the 4<sup>th</sup> Standard Parallel North, at a point 18.24 chs. West of the Standard Cor. to Tps. 17 N., Rs. 17 and 18 E., which is a sandstone, marked S. C. with 6 notches on N., E. and W. edges, and with a stone mound in good order alongside, and

Set a sand stone  $22 \times 12 \times 10$  ins. 16 ins. in the ground, for Closing Cor. to Tps. 16 N., R's 17 and 18 E., marked C. C. with 6 notches on S. & E. edges, and raised a mound of stone, alongside.

Pits impracticable.

Chains.

Land mountainous.

Soil 4<sup>00</sup> rate

Vegetation, bunchgrasses.

June 27<sup>th</sup> 1883.

1

For Final Oaths  
see Book Apr. - 191

U. S. Surveyor General's Office,

Tucson, Arizona, Feb. 5<sup>th</sup> 1884

The foregoing Field Notes <sup>of a portion</sup> of the Survey of the

of  
 Exterior Lines of  
 Townships 13, 14, 15, 16 & 17 North  
 Ranges 17, 18, 19, 20 & 21 East

Of the Gila and Salt River Base and Meridian, Arizona, execu-  
 ted by Henry Meyrick

Deputy Surveyor, under his contract of the 28<sup>th</sup>  
 day of July, 1882, having been

critically examined and the necessary corrections and explana-  
 tions made, the said Field Notes and the surveys they describe  
 are hereby approved

Royal Johnson  
 Surveyor General.