

~~25.~~

2x

1320

No. 1320

BOOK 1320

4-671

**FIELD NOTES**  
**GENERAL LAND OFFICE.**

*Extensions Tps 13, 14, 15 to 16 N*  
*Rs 14-20 15 E.*

No. 1320 ✓

No. 1320

T. 13 N. R. 14 E. North boundary p 59-72

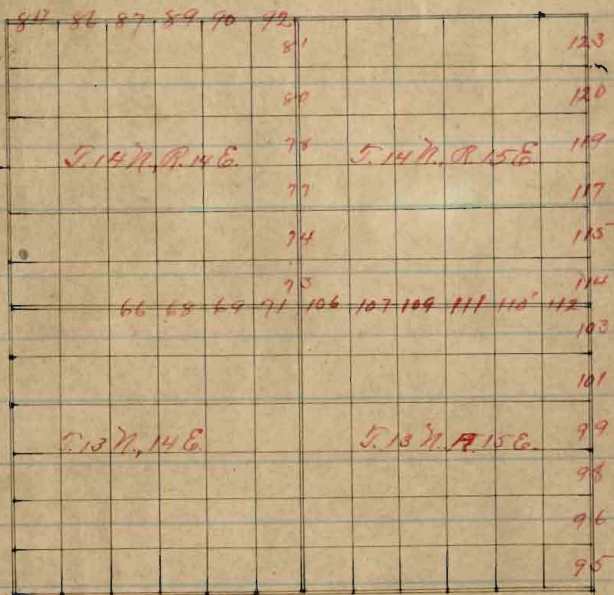
T. 14 N. R. 14 E. East boundary p 73-82

T. 14 N. R. 14 E. North boundary p 83-92

T. 13 N. R. 15 E. East boundary p 95-104

T. 13 N. R. 15 E. North boundary p 105-113

T. 14 N. R. 15 E. East boundary p 114-127



## Exterior Boundaries T. 13 N. R. 14 E.

- 40.50 Gulch bears NW.
- 53.50 Gulch bears NE and ascend
- 65.50 Top.
- 70.00 Descend
- 70.50 Alder Creek 20 lks wide, course NE.
- 70.80 Leave bottom and ascend
- 75.00 Top of bank
- 80.00 Gulch, course NE, where I set a sandstone 16x10x4 ins 11 ins. in the ground for box to Secs 4.5.32 & 33 marked with 4 notches on E and 2 notches on W-faces <sup>edges</sup> from which
- A pine 18 ins diam. bears S. 74° W. 68 lks dist. marked T. 13 N. R. 14 E. S. 5 B.T.
- A pine 20 ins diam bears N 69° W. 54 lks dist. marked T. 14 N. R. 14 E. S. 32 B.T.
- A pine 4 ins diam bears N 8° E 108 lks dist. marked T. 14 N. R. 14 E. S. 33 B.T.

Extreme Boundaries T. 13 N. R. 14 E

Claims

A pine 14 ins. diam bears S. 67° E 40 lks  
 dist. marked T. 13 N. R. 14 E. S. 4 B. T.

Land rough and broken

Soil, worthless

Timber, pine and cedar 80 cks.  
 Heavily timbered land rocks

S. 89° 58' E on a true line bet Sec 4 & 33

Wa. 13° 49' E

Ascend from Gulch. course N. E

10.00 Top of bank of gulch

40.00 Set a sandstone 16 x 10 x 4 ins 11 ins

in the ground for 1/4 Sec cor. marked

1/4 on N face from which

A pine 18 ins diam bears S. 66° E 68 lks  
 dist. marked 1/4 S. B. T.

A pine 16 ins diam bears N. 66° W. 50 lks  
 dist. marked 1/4 S. B. T.

66.40 Cross cattle trail course NW.

## Exterior Boundaries T. 13 N. R. 14 E.

Chains

80.00 Set a sandstone 16 x 12 x 3 ins 11 ins  
in the ground for cor to Secs 3, 4, 33  
& 34 marked with 3 matches on E & W  
edges, from which

A pine 16 ins diam. bears N. 40° W. 102  
the dist. marked T. 14 N. R. 14 E. S. 33 B.T.

A pine 17 ins diam bears N. 25° E. 147 the  
dist marked T. 14 N. R. 14 E. S. 34 B.T.

A pine 18 ins. diam bears S. 20° E. 86 the  
dist. marked T. 13 N. R. 14 E. S. 3 B.T.

A pine 12 ins diam bears S. 48° W. 103 the  
dist. marked T. 13 N. R. 14 E. S. 4 B.T.

Land, by rolling.

Soil 2<sup>d</sup> and 3<sup>d</sup> rate

Timber, pine and cedar 80 chs.  
Slightly timbered land 80 chs.

## Cocterris Boundaries T. 13. N. R. 14 E.

Chain

S. 89° 58' E on a true line bet Secs 34 &amp; 34

Va. 13° 49' E

Through timber

7.00 Wash 20 lbs wide, course N E.

38.00 Gulch bears N W.

40.00 Set a sandstone 16 x 12 x 3 ins. 11 ins  
in the ground for  $\frac{1}{4}$  Sec Cor. marked  
 $\frac{1}{4}$  on N. face

From which

A pine 18 ins. diam bears N. 65° W.  
70 lbs dist. marked  $\frac{1}{4}$  S. B. T.A pine 14 ins diam bears S. 60° E 107  
lbs dist. marked  $\frac{1}{4}$  S. B. T.

57.90 Cross road course N E

80.00 Set a limestone 14 x 12 x 5 ins 10 ins  
in the ground for Cor. to Secs 2, 3, 34  
and 35 marked with 2 notches on  
E and 4 notches on W. faces

## Exterior Boundaries T. 13 N. R. 14 E

Chain

from which

A pinon 12 ins. diam. bears S.  $49^{\circ}$  W 68 1/2 lbs  
 dist. marked T. 13 N. R. 14 E. S. 3 B T.

A pinon 14 ins. diam. bears S.  $29^{\circ}$  E 28 1/2 lbs  
 dist. marked T. 13 N. R. 14 E. S. 2 B T.

A pinon 16 ins. diam. bears N.  $14^{\circ}$  E 60 1/2 lbs  
 dist. marked T. 14 N. R. 14 E. S. 35 B T.

A pinon 10 ins. diam bears N.  $40^{\circ}$  30' W.  
 49 lbs dist. marked T. 14 N. R. 14 E S. 34 B T.

Land high rolling.

Soil 2<sup>d</sup> and 3<sup>d</sup> rate

Timber, pine, juniper and cedar.

Heavily timbered land sochs

S.  $89^{\circ}$  58' E on a true line bet Secs 2 & 35Va.  $13^{\circ}$  49' E

Through timber

9.00 Gulch bears N E.

Eastern Boundary T. 13. N. R. 14 E.

Chain

and  $\frac{1}{4}$  on N. face for  $\frac{1}{4}$  Sec. 6. and  
raised a mound of stones  $1\frac{1}{2}$  ft high  
2 ft base alongside

Pits impracticable.

No bearing trees within limits.

41.50 Saw Creek 150 yds wide course N.

44.00 ascend

70.00 Top of bank.

80.00 The cor to Tpo 13 & 14 N. R. 14 & 15 E  
heretofore described

Land, rough and broken

Soil worthless

Timber, cedar and pine 80 yds.  
~~heavily timbered land~~ 80 yds.  
Oct 23<sup>d</sup> 1893.

At this point at 12 M. Oct. 23<sup>d</sup> 1893 I  
take an observation on the Sun and  
find my instrument in perfect adjust-  
ment. Latitude  $34^{\circ}33'N.$  - Va  $13^{\circ}49'E$



Exterior of V. 13 N. R. 14 E - Lat. Tides, Departures, and closing errors

copy

Line designated	True bearing	Distance	Latitudes		Departures	
			N.	S	E	W
N. boundary	North	475.63	475.63			
N. boundary	S 89° 58' E	485.39		.31	485.39	
E boundary	South	474.02		474.02		
S. boundary	S 89° 48' W	486.50		1.61		486.50
Convergency					.50	
Totals			475.63	475.94	485.89	486.50
				475.63		485.89

Error in lat. .37 Error in dep. .61

07

East Boundary.

Exterior Boundaries T. 14 N. R. 14 E.

From the cor to Tps 14 N. Ro. 14 & 15 E.  
 here in before described

I run

North bet Secs 31 &amp; 36

Va.  $13^{\circ}49'E$ 

Through timber

10.00 Along E. bank of Chevelon Canon

40.00 A pine 12 ins. diam which I marked  
 1/4 S. on W. side for 1/4 Sec. cor. and  
 raised a mound of stone 1 1/2 ft  
 high 2 ft base along side. It is impractic-  
 able. No trees within limits.

80.00 Set a bimastone 15 X 12 X 10 ins 10 in  
 in the ground for cor to Secs 25-30.

31 & 36 marked with 5 notches on  
 N. end 1 notch on S. edges

from which

A pine 3 ins diam bears  $S 30^{\circ}15' E 24 1/2$

Exterior Boundaries T. 14 N. R. 14 E

Chario

dist. marked T. 14 N. R. 15 E. S. 31 B. 9.

A pine 5 ins diam bears S.  $79^{\circ}30'$  W. 38

1/2 dist. marked T. 14 N. R. 14 E. S. 36 B. 9.

A cedar 7 ins. diam bears N.  $49^{\circ}$  W 20 lks

dist. marked T. 14. N. R. 14 E. S. 25 B. 9.

A pine 6 ins diam bears N.  $54^{\circ}6'$  E 35 lks

dist. marked T. 14 N. R. 15 E. S. 30 B. 9.

Land very rough and broken

Soil 4<sup>th</sup> rate

Timber, pine and cedar 80 chs.

Heavily timbered land 80 chs

North bet Sec 25 & 30

N.  $13^{\circ}50'$  E

Through timber: Descend along  
E. bank of Chevelon Cañon

17.00 Bottom of Chevelon Cañon

19.18 Enter creek 82 lks wide course N. E.

20.00 Leave Creek

Exterior Boundaries T. 14 N. R. 14 E.

Chamis

- 21.00 Along W. bank of Chertown Canyon  
 40.00 Set a limestone 10 x 12 x 10 ins. 7 ins  
 in the ground for  $\frac{1}{4}$  Sec Cor. marked  
 $\frac{1}{4}$  on N. face

from which

A pine 4 ins diam bears N. 22° 30' 6.87  
 the dist marked  $\frac{1}{4}$  S. B. T.

A pine 4 ins diam bears S. 22° 30' W. 60  
 the dist. marked  $\frac{1}{4}$  S. B. T.

- 46.00 Ascend  
 54.50 Top of ridge. From this point Durfee's  
 Cabin and corral bear E. 15 the dist.  
 55.50 Descend into gulch course E.  
 58.10 Bottom of gulch and ascend  
 62.00 Edge of bank.  
 63.00 Descend into gulch course E.  
 68.00 Bottom and ascend  
 77.00 Top of ridge.

## Exterior Boundaries T. 14 N. R. 14 E.

Chains

50.00

Set a limestone 16X16X4 ins 11 ins in  
the ground for cor to Secs 19, 24, 25 &  
30. marked with 4 notches on N and  
2 notches on S edges

From which

A pine 5 ins diam bears N. 28° W. 30  
lks dist. marked T. 14 N. R. 14 E S. 24 B. 5.

A cedar 4 ins diam. bears N. 65° E 35 lks  
dist. marked T. 14 N. R. 15 E S. 19 B. 5.

A pine 7 ins diam. bears S. 61° W 56 lks  
dist. marked T. 14 N. R. 14 E S. 25 B. 5.

A pine 6 ins diam bears S. 43° E 43 lks  
dist. marked T. 14 N. R. 15 E. S. 30 B. 5.

Land, rough and broken  
Soil 4<sup>th</sup> rate

Timber cedar and pine 80 cks.  
Heavily timbered land 80 cks

Exterior Boundary T. 14 N. R. 14 E.

Phanis

North bet Secs 19 & 24

Va.  $13^{\circ} 50' E$

Through timber

34.00 Descend into gulch course N.E.

38.00 Bottom and ascend  
40.00 top and descend into Gulch  
40.00 A sandstone in place  $18 \times 10$

8 ins above ground which I mark  
with X at exact corner point and  
 $\frac{1}{4}$  on W. face for  $\frac{1}{4}$  Sec cor.

and raised a mound of stone  
 $1\frac{1}{2}$  ft high 2 ft base along side. Pits  
impracticable

42.00 Gulch, Course N. E. ~~and~~  
Ascend

80.00 Top of bank where I set  
a sandstone  $17 \times 12 \times 4$  ins 12 ins  
in the ground for cor to Secs 13.18

## Exterior Boundaries T. 14 N. R. 14 E

Chain

19824 marked with 3 notches on  
N and S. edges

From which

A pinon 8 ins. diam bears S.  $37^{\circ}$  W. 68

the dist. marked T. 14 N. R. 14 E S. 24 BT.

A pinon 14 ins diam bears S.  $15^{\circ}$  E 164 the

dist marked T. 14 N. R. 15 E. S. 19 BT.

A pinon 7 ins diam bears N.  $34^{\circ}$  E 38

the dist. marked T. 14 N. R. 15 E S. 18 BT.

A pinon 9 ins. diam bears N.  $40^{\circ}$  W. 109

the dist. marked T. 14 N. R. 14 E S. 13 BT.

Land broken

Soil 3<sup>d</sup> and 4<sup>th</sup> etc

Timber Cedar and pinon 80 chs.

Heavily timbered land 80 chs

North bet Secs 13 & 18

va  $13^{\circ} 49' E$

Through timber

## Exterior Boundaries T. 14. N. R. 14 E.

Charris

40.00

Set a sandstone 18 X 12 X 4 ins 12 ins  
in the ground for  $\frac{1}{4}$  Sec 6 or marked  
 $\frac{1}{4}$  on W. face

from which

A pine 12 ins diam. bears N 89° E  
57 lbs dist. marked  $\frac{1}{4}$  S. B. T.

A pine 8 ins diam bears S. 41° W.  
43 lbs dist. marked  $\frac{1}{4}$  S. B. T.

40.30 Cross road course N E.

80.00 Set a limestone 17 X 10 X 4 ins 12 ins  
in the ground for cor to secs 7. 12.

13818 marked with 2 notches on  
N and 4 notches on S edges

from which

A pine 4 ins diam bears S. 64° W  
6 lbs dist. marked T. 14. N. R. 14 E. S. 13 B. T.

A pine 4 ins diam bears N. 45° E 42 lbs  
dist. marked T. 14. N. R. 15 E. S. 7 B. T.



Exterior Boundaries T. 14 N. R. 14 E.

Chanis

No other bearing trees within limits.  
Land rolling.

Soil 2<sup>d</sup> and 3<sup>d</sup> rates

Timber, pinon and cedar 80 cts.  
Heavily timbered land 80 cts.

North bet Secs 7 & 12

Pa.  $13^{\circ} 51' E$

Through timber

40.00 Set a limestone  $16 \times 15 \times 10$  ins  $11$  ins  
in the ground for  $\frac{1}{4}$  Sec cor. marked  
 $\frac{1}{4}$  on W. face

from which

A pinon 4 ins diam bears  $N. 21^{\circ} 30' E$   
13 lbs diat. marked  $\frac{1}{4}$  S.B.T.

A pinon 10 ins diam bears  $S. 53^{\circ} W$   
16 lbs diat. marked  $\frac{1}{4}$  S.B.T.

50.00 Descend into cañon

63.00 Cañon course N.E. and ascend  
top of

77.50 Opposite bank of cañon

77.70 Descend into West Cheron

Exterior Boundaries T. 14 N. R. 14 E.  
Chain

Canon bears E & W.

- 80.00 Set a limestone 18 X 14 X 10 ins 12 ins  
in the ground for cor to Secs 1, 6, 7 &  
12 marked with 1 notch on N and  
5 notches on S. edges and raised  
a mound of stone 1 1/2 ft high 2 ft  
base alongside. Pits impracticable.  
No bearing trees within limits.  
Land very rough <sup>and</sup> <sup>broken</sup> mountainous rocks  
Soil 3<sup>d</sup> & 4<sup>th</sup> rate  
Timber <sup>scattering cedar & pine</sup> <sup>so also</sup> pine, cedar, ~~barren~~  
~~mountainous area~~  
Heavily timbered land rocks

North bet Secs 1 & 6

Pa. 13° 51' E

Descending into West Chertow Canon

1.00 Bottom of Canon bears E

2.00 Ascend

Exterior Boundaries T. 14 N. R. 14 E

Chamie

- 6.50 Top of Bank
- 32.00 Descend gradually.
- 33.05 Road, bears E & W.
- 40.00 Set a limestone  $17 \times 14 \times 3$  ins  $12$  ins  
in the ground for  $\frac{1}{4}$  Sec Cor.  
marked  $\frac{1}{4}$  on W. face and raised  
a mound of stone  $1\frac{1}{2}$  ft high  $2$  ft  
base alongside. Pits impracticable  
No trees within limits.
- 80.00 Set a limestone  $20 \times 10 \times 3$  ins  $15$  ins  
in the ground for cor to Tps 14 &  
15 N. Rs 14 & 15 E marked with  
6 notches on each edge and raised  
a mound of stone  $1\frac{1}{2}$  ft high  $2$  ft  
base alongside. Pits impracticable.  
From which  
A cedar  $16$  ins. diam bears N.  $28^\circ$  E.  
 $169$  Ws dist. marked T. 15 N. R. 15 E. 133 B. 5.

Exterior Boundaries T. H. N. R. 14 E.

Charris

No other trees within limits.

Land broken  $\frac{3}{4}$  mountainous

Soil 3<sup>d</sup> and 4<sup>th</sup> rate

Timber a few cedars.

~~mountainous~~ land 6.50 chs  
Oct 31<sup>st</sup> 1893

At this point at 12 M. Oct 31<sup>st</sup> 1893.

I take an observation on the Sun  
and find my instrument in  
perfect adjustment

Latitude  $34^{\circ}38' N.$   $Pa. 13^{\circ}53' E$

From the Cor to Tps 14 & 15 N. Ro.  
14 & 15 E I run West on a ran down  
line between said Townships the  
variation of my compass being  $13^{\circ}53' E.$   
I set temporary half mile and mile  
corners at each 40 and 80 chs and  
find the township line to be 6 miles  
5 chs long and the falling to be

## Exterior Boundaries T. 14 N. R. 14 E

Chain

103 lks S. of the cor to Tpo. 14 & 15 N.  
 Ro 13 & 14 E. The correction for the  
 true line will therefore be 17 lks S.  
 and 5 chs West per mile. and the  
 course will be S.  $89^{\circ}53' E$ .

From the cor to Tpo. 14 & 15 N. Ro.  
 13 & 14 E. hereinbefore described  
 I run.

S.  $89^{\circ}53' E$  on a true line bet Secs 6 & 31  
 Va.  $13^{\circ}53' E$

Through timber

- 0.50 Descend into draw  
 1.00 Bottom of draw bears NW. and ascend  
 5.00 Leave draw.  
 45.00 Set a limestone  $16 \times 10 \times 4$  ins. 11 ins  
 in the ground for  $\frac{1}{4}$  Sec cor. marked  
 $\frac{1}{4}$  on N. face  
 from which  
 A cedar 4 ins. diam bears N.  $60^{\circ}30' E$

Exterior Boundaries T. 14. N. R. 14 E.

Charms

50 lbs dist. marked  $\frac{1}{4}$  S. B. T.A pinon 8 ins. diam bears S. 8° W. 81 lbs  
dist. marked  $\frac{1}{4}$  S. B. T.

85.00 A limestone in place  $2 \times 2 \frac{1}{2}$  ft  
12 ins above ground which I mark  
with X at exact cor. point and  
5 notches on E and 1 notch on W.  
faces for cor to Secs 5, 6, 31 & 32  
from which

A pinon 6 ins diam. bears N. 42° 30' W  
45 lbs dist. marked T. 15 N. R. 14 E S. 31 B. T.A pinon 5 ins diam bears N. 61° E 23 lbs  
dist. marked T. 15 N. R. 14 E. S. 32 B. T.A pinon 4 ins diam bears S. 44° 30' W. 44 lbs  
dist. marked T. 14 N. R. 14 E S. 6 B. T.A pinon 4 ins. diam bears S. 21° E 80 lbs  
dist. marked T. 14 N. R. 14 E. S. 5 B. T.

Land rolling

Soil, 2<sup>d</sup> and 3<sup>d</sup> rate.

Exterior Boundary T. 14 N. R. 14 E  
 Chain.

Timber, cedar and pinon 85 chs.  
 Heavily timbered land 85 chs

S. 89° 53' E on a true line bet Secs 5 & 32.

Na. 13° 53' E

Through timber.

40.00 Set a limestone 16 x 14 x 4 ins 11 ins  
 in the ground for  $\frac{1}{4}$  Sec Cor. marked  
 $\frac{1}{4}$  on N. face

from which

A pinon 4 ins. diam bears N. 49° E 71 lks  
 dist. marked  $\frac{1}{4}$  S. B. T.

A pinon 6 ins. diam. bears S. 70° 30' W.  
 61 lks dist marked  $\frac{1}{4}$  S. B. T.

41.50 Descend from mesa

57.00 Enter draw bears N. E.

59.00 Trail course N. E. E

63.00 Leave draw

80.00 Set a limestone 18 x 12 x 7 ins 12 ins  
 in the ground for cor. to sec 4. 5. 32

Anterior Boundary T. 14 N. R. 14 E.

chains

and 33 marked with 4 notches on E  
and 2 notches on W. edges

from which

A pinon 4 ins. diam bears S. 65° E.

33 lbs diat. marked T. 14 N. R. 14 E. S. 4 BT.

A pinon 10 ins. diam bears N. 57° E 18 lbs  
diat. marked T. 15 N. R. 14 E. S. 33 BT.

A pinon 10 ins. diam bears N. 12° 30' W  
56 lbs diat. marked T. 15 N. R. 14 E. S. 32 BT.

A pinon 8 ins. diam. bears S. 24° 30' W. 61 lbs  
diat. marked T. 14 N. R. 14 E. S. 5 BT.

Land calling.

Soil 2<sup>d</sup> and 3<sup>d</sup> rate

Timber, pinon and cedars 80 chs.  
Heavily timbered land 80 chs

S. 89° 53' E on a true line bet Sec 4 & 33

Ta. 13° 53' E

Through timber

40.00 Set a sandstone 15 X 12 X 12 ins 10 ins



Exterior Boundaries T. 14 N. R. 14 E.  
Chains

in the ground for  $\frac{1}{4}$  Sec Cor. marked  
 $\frac{1}{4}$  on N. face

from which

A pinon 5 ins. diam bears N.  $56^{\circ}30'E$ .  
12 lbs dist marked  $\frac{1}{4}$  S. B. T.

A pinon 5 ins. diam bears S.  $35^{\circ}W$ . 52 lbs  
dist. marked  $\frac{1}{4}$  S. B. T.

59.35 Road bears E & W; forks NE.

67.00 Leave timber.

78.00 Road course E. N. E.

80.00 Set a limestone  $15 \times 14 \times 8$  ins  $10$  ins  
in the ground for cor to Secs 3. 4. 33

& 34 marked with 3 notches on E  
and W. edges, and raised a mound  
of stone  $1\frac{1}{2}$  ft high 2 ft base along side.  
Pits impracticable.

Land, rolling

Soil 2<sup>d</sup> and 3<sup>d</sup> rate

Timber pinon and cedar 67 chs.  
Heavily timbered 67 chs

Exterior Boundaries T. 14 N. R. 14 E.

Phanis

S. 89° 53' E. on a true line bet Secs 3 & 34

Pa. 13° 53' E

Through scattering timber

15.00 Road bet N. W. & S. E.

40.00 Set a limestone 14 x 12 x 4 ins. 10 ins

in the ground for  $\frac{1}{4}$  Sec bet marked

$\frac{1}{4}$  on N. face

from which

A pinon 4 ins. diam bears N. 55° E 24

the dist. marked  $\frac{1}{4}$  S. B. T.

A pinon 4 ins. diam bears N. 73° W. 22

the dist. marked  $\frac{1}{4}$  S. B. T.

80.00 Set a limestone 16 x 14 x 3 ins 11 ins in

the ground for bet to Secs 2, 3, 34 & 35

marked with 2 notches on E and 4

notches on W. edges

from which

A pinon 6 ins. diam bears S. 56° 30' E

44 the dist. marked T. 14 N. R. 14 E. S. B. T.

A cedar 20 ins. diam. bears S. 5° 30' W. 69 1/2

## Exterior Boundaries T. 14 N. R. 14 E.

Chain.

dist. marked T. 14 N. R. 14 E. S. 3 B. F.

A cedar 20 ins diam. bears N. 36° E 109 lks

dist. marked T. 15 N. R. 14 E. S. 35 B. F.

No other trees within limits.

Land gently rolling

Soil 2<sup>d</sup> and 3<sup>d</sup> rate

Timber, scattering pine and cedar 8000

S. 89° 53' E on a true line bet Sec 2 &amp; 35

Va. 13° 53' E

Through scattering timber

40.60 Set a limestone 14 x 12 x 4 ins 10 ins in

the ground for  $\frac{1}{4}$  Sec Cor. marked  $\frac{1}{4}$  onN. face and raised a mound of  
stone  $1\frac{1}{2}$  ft high 2 ft wide alongside.

Site impracticable.

From which:

A cedar 10 ins. diam bears S. 42° W. 123

lks dist. marked  $\frac{1}{4}$  S. B. F.

Exterior Boundaries T. 14 N. R. 14 E.

Chanis

A cedar 20 ins. diam. bears N. 9° E.

72 lks dist. marked  $\frac{1}{4}$  S. B. T.

40-70 Road bears N. E.

80-00. Set a timberstone 16x10x4 ins. 11 ins  
in the ground for cor to Secs 1, 2, 35  
and 36. marked with 1 notch on E.  
and 5 notches on W. edges

from which

A pinon 5 ins. diam bears S 83° W.

39 lks dist marked T. 14 N. R. 14 E S. 2 B. T.

A pinon 5 ins. diam. bears N. 17° E 16 lks

dist marked T. 15 N. R. 14 E. S. 36 B. T.

A pinon 4 ins. diam bears N. 49° W. 163 lks

dist marked T. 15 N. R. 14 E S. 35 B. T.

A pinon 3 ins. diam bears S. 43° E 53 lks

dist. marked T. 14 N R. 14 E S. 1 B. T.

Land gently rolling.

Soil 2<sup>d</sup> and 3<sup>d</sup> rate

Timber, scattering pinon & cedar 80 ch

Eastern Boundary T. 14 N. R. 14 E.

Chain

S. 89° 53' E on a true line bet Secs 1 & 36

Br. 13° 53' E

scattering

Through dense timber

30.00 ~~See dense timber and enter scattering~~

40.00 Set a limeston 16 x 10 x 3 ins 11 ins

in the ground for  $\frac{1}{4}$  Sec Cor marked

$\frac{1}{4}$  on N. face and raised a

mound of about 1 $\frac{1}{2}$  ft high 2 ft diam

along side. Pits impracticable

From which

A pinon 4 ins. diam bears S. 45° W.

35 lbs dist. marked  $\frac{1}{4}$  S. B. T.

A cedar 12 ins. diam. bears N. 68° 30' E.

28 lbs dist. marked  $\frac{1}{4}$  S. B. T.

80.00 The cor to Tps 14 & 15 N. R. 14 &  
15 E.

Land rolling.

Soil 2<sup>d</sup> and 3<sup>d</sup> rate

Timber: Scattering pinon & cedar 8000  
Heavily timbered land 3000

Nov 1<sup>st</sup> 1893

*Caps*

Shains

Extensions of S. 14 N. T. 14 C  
 Latitudes, departures, and closing errors

Line designated as	True bearing	Distance	Latitudes		Departures	
			N	S	E	W
West boundary	North	480.00	480.00			
North boundary	S 89° 53' E	485.00		1.03	485.00	
East boundary	South	480.00		480.00		
South boundary	N 89° 53' W	485.39	31			485.39
Convergencies						
			480.31	481.03	485.50	485.39
				480.31	485.39	
			Error in lat. .72		.77 Error in dep.	

East Boundary.

Exterior Boundaries T13 N. R. 15 E.

Chains

From the Standard Cor to Tps 13 N.

Rs. 15 &amp; 16 E heretofore described

I am

North bet Secs 31 &amp; 36

T<sup>a</sup> 13° 53' E

Through timber

31.62

Set a sandstone 14x10x10 ins 10 ins  
in the ground for  $\frac{1}{4}$  Sec cor. marked  
 $\frac{1}{4}$  on W. face

from which

A pine 22 ins. diam bears S. 71° 30' E 45 ft.  
dist. marked  $\frac{1}{4}$  S. P. T.

A pine 20 ins. diam bears N. 71° 30' W. 126  
ft. dist. marked  $\frac{1}{4}$  S. P. T.

71.62

Set a sandstone 20x15x12 ins 15 ins in  
the ground for Cor to Secs 25, 30, 31 &  
36 marked with 5 notches on N and  
1 notch on S. edge

from which

## Exterior Boundaries T. 13 N. R. 15 E

Chains

A pine 12 ins diam bears S.  $32^{\circ}$  E 111 lks  
 dist. marked T. 13 N. R. 16 E. S. 31 P. 5.

A pine 20 ins diam bears S.  $78^{\circ}$  W 48 lks  
 dist. marked T. 13 N. R. 15 E. S. 36 P. 5.

A pine 10 ins diam bears N.  $50^{\circ}$  45' E 82 lks  
 dist. marked T. 13 N. R. 16 E. S. 30 P. 5.

A pine 4 ins diam bears N.  $76^{\circ}$  15' W 103  
 lks dist. marked T. 13 N. R. 15 E. S. 25 P. 5.

Land level

Soil 1<sup>st</sup> and 2<sup>d</sup> rate

Timber Pine and Juniper 71.62 chs.  
~~62 chs. timbered land 71.62 chs~~  
 See Note page 8 Book 1.

North lot Secs 25 &amp; 30

Va  $13^{\circ}$  54' E

Through timber

13.00 Sutch corner N E.

40.00 Set a sandstone 16 X 12 X 8 ins 11 ins

page 5

in the ground for  $\frac{1}{4}$  Sec for marked



## Exterior Boundaries T. 13 N. R. 15 E.

Chain

1/4 on W. face from which  
 A cedar 4 ins diam bears S.  $32^{\circ} 30' W$   
 8 lks dist marked 1/4 S. B. T.

A juniper 4 ins. diam bears N.  $19^{\circ} E$ .  
 20 lks dist. marked 1/4 S. B. T.

49.00 Wash 20 lks wide and trail course N. E.

58.00 Wash 16 lks wide bears E. N. E.

80.00 Set a limestone  $20 \times 12 \times 10$  ins  $15$  ins  
 in the ground for cor to Secs 19, 24,  
 25 & 30 marked with 4 notches on  
 N. and 2 notches on S. edges  
 from which

A cedar 4 ins diam. bears N.  $75^{\circ} E$  32 lks  
 dist. marked T. 13 N. R. 16 E. S. 19 B. T.

A cedar 7 ins. diam bears S.  $33^{\circ} E$  20 lks  
 dist. marked T. 13 N. R. 16 E. S. 30 B. T.

A cedar 8 ins diam bears N.  $26^{\circ} W$  29 lks  
 dist. marked T. 13 N. R. 15 E. S. 24 B. T.

A cedar 4 ins diam. bears S.  $55^{\circ} W$  24 lks

# Exterior Boundaries T. 13 N. R. 15 E.

Chain

dist. marked T. 13 N. R. 15 E. S. 25 B.T.

Land rolling

Soil 2<sup>d</sup> and 3<sup>d</sup> rate

Timber, pine and cedar 80 chs.

Heavily timbered land rocks

North bet Secs 19 & 24

va.  $13^{\circ}54'E$

Through timber

6.50 butch bears E.

40.00 Set a sandstone 15x10x4 ins 10 ins

in the ground for  $\frac{1}{4}$  Sec Cor. marked

$\frac{1}{4}$  on W. face

from which

A cedar 8 ins. diam bears S.  $24^{\circ}30'W$ .

29 lks dist. marked  $\frac{1}{4}$  S. B.T.

A cedar 4 ins diam bears N.  $76^{\circ}15'E$ .

26 lks dist. marked  $\frac{1}{4}$  S. B.T.

80.00 A limestone in place 4x2 $\frac{1}{2}$  ft

7 inches above ground which I mark

# Exterior Boundaries T. 13 N. R. 15 E.

Chains

with x at exact cor. point and 3  
notches on N and S edges for bar  
to Secs 13. 18. 19 & 24

from which

A cedar 7 ins. diam. bears S.  $29^{\circ}30'W$ .

18 lbs dist marked T. 13 N. R. 15 E. S. 24 B.T.

A cedar 12 ins. diam bears N.  $67^{\circ}30'W$ . 38

lbs dist marked T. 13 N. R. 15 E. S. 13 B.T.

A cedar 8 ins. diam bears S.  $9^{\circ}6'$  55 lbs

dist. marked T. 13 N. R. 16 E. S. 19 B.T.

A juniper 14 ins. diam bears N.  $54^{\circ}6'12$

lbs dist. marked T. 13 N. R. 16 E. S. 18 B.T.

Land level and rolling.

Soil 2<sup>d</sup> and 3<sup>d</sup> rate

Timber, pine and cedar 80chs  
~~heavily timbered~~ land 80chs

North bet Secs 13 & 18

N.  $13^{\circ}53'E$

Through timber.

Exterior Boundaries T. 13 N. R. 15 E  
 Chain

40.00 Set a sandstone 18x12x10 ins 12 ins in  
 the ground for  $\frac{1}{4}$  Sec Cor. marked  
 $\frac{1}{4}$  on W. face

from which

A pinon 4 ins. diam bears N.  $69^{\circ}30' E$   
 20 lbs dist. marked  $\frac{1}{4}$  S. B. T.

A pinon 12 ins diam bears S.  $67^{\circ} W$ .  
 186 lbs dist marked  $\frac{1}{4}$  S. B. T.

50.10 Trail course W. N. W.

50.90 Trail course W. N. W.

56.00 At this point a sheep corral and  
 also a well bear West 6 lbs dist.

62.00 Trail course N. E.

71.10 Trail course N. W.

80.00 Set a sandstone 18x12x8 ins 12 ins  
 in the ground for cor to Secs 7-12.  
 13 & 18. marked with 2 notches on N.  
 and 4 notches on S. edges

from which

## Exterior Boundary T. 13 N. R. 15 E.

Chains

A pinon 8 ins. diam bears S.  $20^{\circ}$  E 47 lks  
 dist. marked T. 13 N. R. 16 E. S. 18 B. F.

A pinon 8 ins. diam bears S.  $34^{\circ}$  W. 53 lks  
 dist. marked T. 13 N. R. 15 E. S. 13 B. F.

A pinon 5 ins. diam bears N.  $7^{\circ}$  30' E. 76 lks  
 dist. marked T. 13 N. R. 16 E. S. 7 B. F.

A pinon 6 ins. diam bears N.  $66^{\circ}$  30' W.  
 104 lks dist. marked T. 13 N. R. 15 E. S. 12 B. F.

Land rolling and level

Soil 1<sup>st</sup> and 2<sup>d</sup> rate

Timber, juniper, cedar and pinon  
 Heavily timbered land rocks

North lot Seco 7 & 12

Va.  $13^{\circ}$  53' E

Through timber

40.00 Set a sandstone 15 x 10 x 8 ins 10 in  
 in the ground for  $\frac{1}{4}$  sec cor marked  
 $\frac{1}{4}$  on W. face, from which

Exterior Boundaries T. 13 N. R. 15 E

Chains

A pinon 4 ins. diam bears S.  $63^{\circ}$  W. 20 lbs  
dist. marked  $\frac{1}{4}$  S. B. T.

A pinon 10 ins. diam bears N.  $61^{\circ}$  E 58 lbs  
dist. marked  $\frac{1}{4}$  S. B. T.

47.10 Cattle trail bears N W.

47.45 Cattle trail bears N W.

80.00 Set a sandstone  $20 \times 12 \times 5$  ins 15 ins  
with ground for cor to Secs 1, 6, 7 & 12  
marked with 1 notch on N ends &  
notches on S. edges

from which

A pinon 7 ins diam bears S.  $18^{\circ}$  30' E.  
39 lbs dist. marked T. 13 N. R. 16 E S. 7 B. T.

A pinon 4 ins diam bears S.  $74^{\circ}$  W 27 lbs  
dist. marked T. 13 N. R. 15 E. S. 12 B. T.

A pinon 12 ins. diam bears N.  $20^{\circ}$  W. 18 lbs  
dist. marked T. 13 N. R. 15 E. S. 1 B. T.

A pinon 7 ins. diam bears N.  $58^{\circ}$  E 46 lbs  
dist. marked T. 13 N. R. 16 E S. 6 B. T.

## Exterior Boundaries T. 13 N. R. 15 E

5 chains

Land level and rolling.

Soil 2<sup>nd</sup> rate.Timber, juniper and cedar. 80 chrs  
Heavily timbered land & such

North bet Secs 1 &amp; 6

Ta.  $13^{\circ} 54' E$ 

Through Timber

15.30 Enter valley bears NNE.

17.00 Cross Road Course NNE.

20.00 Leave valley.

40.00 Hit a sandstone  $20 \times 12 \times 4$  ins 15 ins  
in the ground for  $\frac{1}{4}$  Sec Cor. marked  
 $\frac{1}{4}$  on W. face

from which

A pine 4 ins diam bears S.  $70^{\circ} 30' E$ .30 lbs dist. marked  $\frac{1}{4}$  S. B.T.A pinon 7 ins diam bears N.  $68^{\circ} W. 58$ lbs dist. marked  $\frac{1}{4}$  S. B.T.

57.50 Small gulch course N.

# Exterior Boundaries T. 13 N. R. 15 E

Chains.

63.00 Road corner N. N. E.

80.00 Set a limestone  $17 \times 14 \times 4$  ins  $1/2$  in  
in the ground for cor to Tps 13 &  
14 N. R. 15 & 16 E. marked with  
6 notches on each edge

from which

A pine 8 ins diam. bears S.  $35^{\circ}$  W. 113  
lbs diat. marked T. 13 N. R. 15 E S. 1 B 5.

A pine 4 ins diam bears S.  $82^{\circ}$  E 93 lbs  
diat marked T. 13 N. R. 16 E S. 6 B 5.

A cedar 10 ins. diam bears N.  $72^{\circ}$  30' E.  
120 lbs diat. marked T. 14 N. R. 16 E S. 31 B 5.

A cedar 4 ins. diam bears N.  $36^{\circ}$  W. 223 lbs  
diat marked T. 14 N. R. 15 E S. 36 B 5.

Land rolling

Soil 2<sup>d</sup> rate

Timber pine and cedar 80 chs.  
heavily timbered land 80 chs  
Nov 13<sup>th</sup> 1893



North Boundary.

Carter's Boundary T. 13 N. R. 15 E

Plains

At 12 M. Nov 14<sup>th</sup> 1893 I take an observation on the Sun and find my instrument in perfect adjustment. Latitude  $34^{\circ} 33' N.$       Va.  $13^{\circ} 54' E$

From the cor to Tpo 13 & 14 N. R. 15 & 16 E. I run West on a random line between said Townships the variation of my compass being  $13^{\circ} 54' E$ . I set temporary half mile and mile courses at each 40 chs and 80 chs and find the township line to be 6 miles 7 chs and 10 lks long and the falling to be 44 lks South of the cor to Tpo 13 & 14 N. R. 14 & 15 E. The correction for the true line will therefore be  $7\frac{1}{2}$  lks S. and  $710$  chs West per mile and its course will be  $S. 89^{\circ} 57' E$ .

From the cor to Tpo. 13 & 14 N. R.

Eastern Boundary T. 13 N. R. 15 E

Chassis

14 & 15 E here in before described  
I am

S. 89° 57' E on a true line bet Secs 68 & 31  
Va. 13° 54' E

Through timber.

- 1.05 Enter valley.
- 41.58 Gulch course N.
- 47.10 A cedar 12 in. diam. which I marked  
1/4 S. on N. side, for 1/4 Sec Cor. and  
raised a mound of stone 1 1/2 ft high  
2 ft base alongside. It is impracticable  
No other trees within limits.
- 55.10 Draw bears N.
- 87.10 Set a sandstone 15 x 15 x 4 in 10 in  
in the ground for Cor to Sec 05.6.  
31. & 32. marked with 5 notches on  
E. and 1 notch on N. edges  
from which

Exterior Boundaries T. 13. N. R. 15 E

Chains

A cedar 10 ins diam bears S. 46° W. 4 lks  
dist. marked T. 13. N. R. 15 E. S. 6 B. 5.

A cedar 8 ins diam bears S. 14° E 46 lks  
dist. marked T. 13. N. R. 15 E. S. 5 B. 5.

A cedar 6 ins diam. bears N. 67° E 67 lks  
dist. marked T. 14. N. R. 15 E. S. 32 B. 5.

A cedar 5 ins diam bears N. 64° 30' W  
55 lks dist. marked T. 14. N. R. 15 E. S. 31 B. 5.

Land rolling

Soil 3<sup>d</sup> rate

Timber, dense cedar 87 chs 10 lks.

Heavily timbered land 87.10 chs

S. 89° 57' E on a true line bet Sec 5 & 32

Va. 13° 54' E

Descending through timber.

6.50 Bottom <sup>course North</sup> and ascend.

18.00 Top of mesa

40.00 Set a sandstone 14 x 14 x 6 ins 10 ins  
in the ground for 1/4 Sec Cor marked

Extreme Boundaries T. 13 N. R. 15 E.

Chains

$\frac{1}{4}$  on N face

from which

A cedar 5 ins diam bears N.  $88^{\circ} 30' E$ .

24 lbs dist. marked  $\frac{1}{4}$  S. B. T.

A juniper 10 ins. diam bears S.  $78^{\circ} W$ .

21 lbs dist. marked  $\frac{1}{4}$  S. B. T.

71.70 Enter draw bears N. N. W.

80.00 Set a sandstone 18 x 12 x 3 ins 12 ins  
in the ground for cor to Seco 4. 5. 32

8.33 marked with 4 notches on E.

and 2 notches on W. edges

from which

A pinon 18 ins. diam bears S.  $71^{\circ} 15' W$ .

78 lbs dist. marked T. 13 N. R. 15 E S. 5 B. T.

A pinon 17 ins. diam bears S.  $16^{\circ} 30' E$  85 lbs

dist. marked T. 13 N. R. 15 E S. 4 B. T.

A pinon 6 ins. diam bears N.  $69^{\circ} E$  160

lbs dist. marked T. 14 N. R. 15 E S. 33 B. T.

A pinon 5 ins. diam bears N.  $30^{\circ} W$  87 lbs

Eastern Boundary T13 N. R. 15 E.

Chain

dist. marked T. 14 N. R. 15 E. S. 32 P. 5.

Land rolling

Soil 2<sup>d</sup> rate

Timber, pine and juniper 80 ch.

~~Heavily timbered land 80 ch.~~

S.  $89^{\circ}57'E$  on a true line to Sec 28, 33

Var.  $13^{\circ}55'E$

In draw, through timber

1.00 Leave draw, Trail N. E

40.00 Descend into gulch, where I set a limestone  $15 \times 14 \times 10$  ins  $10$  ins in the ground for  $\frac{1}{4}$  Sec cor. marked  $\frac{1}{4}$  on N. face

from which

A cedar 8 ins. diam bears N.  $6^{\circ}W$ .

32 lbs dist. marked  $\frac{1}{4}$  S. P. 5.

A cedar 4 ins. diam bears S.  $45^{\circ}E$  29 lbs

dist. marked  $\frac{1}{4}$  S. P. 5.

43.00 Bottom of gulch course N. W.

Extreme Boundaries T. 13 N. R. 15 E.

Chains

43.50 cattle trail bears N & S.

44.00 Ascend.

70.00 Top of bank.

80.00 Set a limestone  $16 \times 12 \times 10$  in  $11$  in  
in the ground for cor to Secs 3, 4, 33  
& 34 marked with 3 notches on E  
and W. edges

from which

a pinon 8 in diam bears S.  $66^{\circ} 6'$

9ths dist. marked T. 13 N. R. 15 E. S. 3 B. 5.

A pinon 7 in diam bears S.  $38^{\circ} 30' W. 64'$

ths dist. marked T. 13 N. R. 15 E. S. 4 B. 5.

A pinon 8 in diam bears N.  $52^{\circ} 30' W. 62'$

ths dist. marked T. 14 N. R. 15 E. S. 33 B. 5.

A pinon 4 in diam bears N.  $20^{\circ} 30' E. 87'$

ths dist. marked T. 14 N. R. 15 E. S. 34 B. 5.

Land rolling

Soil 2<sup>d</sup> and 3<sup>d</sup> rate

Timber, juniper, cedar and pinon & oaks

## Exterior Boundaries T. 13 N. R. 15 E.

Chains

S. 89° 57' E on a true line bet Secs 3 &amp; 34

Pa. 13° 56' E

Through timber

11.00 Trail, course N. E.

33.75 Trail course, N. E. S.

40.00 Set a sandstone 15 x 10 x 4 ins 10 ins  
in the ground for  $\frac{1}{4}$  Sec Cor. marked  
 $\frac{1}{4}$  on N. face

from which

A pinon 8 ins. diam bears S. 8° E 74 the  
dist. marked  $\frac{1}{4}$  S. B. T.A pinon 10 ins diam bears N. 64° W. 17 1/2  
dist. marked  $\frac{1}{4}$  S. B. T.80.00 Set a sandstone 21 x 16 x 4 ins 16 ins  
in the ground for cor to Secs 2, 3, 34  
and 35 marked with 2 notches on  
E and 4 notches on W. edges

from which

Exterior Boundaries T. 13 N. R. 15 E

Chains

A pinnow 8 ins. diam bears S. 8° E.  
74 lks dist. marked T. 13 N. R. 15 E  
S. 2 B F.

A pinnow 8 ins diam bears S. 8° 30' W.  
68 lks dist marked T. 13 N. R. 15 E S. 3 B F.

A pinnow 7 ins diam bears N. 40° E 73 lks  
dist marked T. 14 N. R. 15 E S. 35 B F.

A pinnow 7 ins diam bears N. 47° W 86  
lks dist marked T. 14 N. R. 15 E. S. 34 B F.

Land level and rolling.

Soil 2<sup>d</sup> rate

Timber, cedar and juniper 80 cks.  
Heavily timbered land 80 cks

S. 89° 57' Corn tree line bet Secs 2 & 35

Va. 13° 55' E

Through timber.

33.50 Descend gently.

40.00 Set a sandstone 20 x 14 x 4 ins 15 ins



## Exterior Boundaries T. 13 N. R. 15 E.

Chain

in the ground for  $\frac{1}{4}$  Sec Cor marked  
 $\frac{1}{4}$  on N. face

from which

A pine 4 ins diam bears S.  $17^{\circ}$  E 28 lks  
 dist. marked  $\frac{1}{4}$  S. B. T.

A pine 10 ins diam bears N.  $26^{\circ}$  W. 52 lks  
 dist. marked  $\frac{1}{4}$  S. B. T.

48.50 Indian huts

59.75 Cross gulch course S. S. E.

70.00 Cross gulch course S. S. E.

73.25 Cross gulch course S. S. E. and ascend.

76.00 Top and along North bank of cañon  
 which at this point bears E & W.

80.00 Set a sandstone  $18 \times 12 \times 5$  ins 12 ins  
 in the ground for cor to Secs 1, 2, 35  
 & 36 marked with 1 notch on E and  
 5 notches on W. edges

from which

Exterior Boundaries T. 13. N. R. 15 E

Chains

A pine 4 ins diam bears N. 88° 30' E  
31 lks dist marked T. 14. N. R. 15 E. S. 36 P.T.

A pine 4 ins. diam bears S. 51° W. 40 lks  
dist marked T. 13. N. R. 15 E. S. 2 P.T.

A pine 6 ins. diam bears N. 68° 30' W 13 lks  
dist. marked T. 14. N. R. 15 E. S. 35 P.T.

No other bearing trees within limits.

Land broken

Soil & strata

Timber, pine, juniper and cedar 80 lks  
Abundantly timbered land

S. 89° 57' E on a true line bet Sec 18 & 36

Pa. 13° 54' E

Through timber descend into

Wild Cat Cañon

3.00

3.40

3.50

Bottom & Creek flows N. E  
Wash & Trail course N. E  
ascend east bank of cañon

copy

Exterior of S. 1377 R. 155E  
 Latitudes, departures, and closing errors

Line designated true bearing distance	Latitudes	Departures
N. boundary North 474.02	N	N
N. boundary S89°07'E 487.10	S	E
E. boundary South 471.62		
S. boundary S89°43'W 488.52		
Convergence		
	474.02	487.10
	471.62	488.52
	2.40	488.52
	---	---
Totals	474.02	487.60
	474.02	487.60
Error in latitude	44	Error in dep. .92

terior Boundaries T. 13 N. R. 15 E

40.00 Set a limestone  $15 \times 10 \times 14$   
 ins 10 ins in the ground  
 for  $\frac{1}{4}$  Sec. Cor marked  
 $\frac{1}{4}$  on N face, from which  
 a pine 7 ins diam bears  
 $S 11^{\circ} W$ . 73 lks dist. marked  
 $\frac{1}{4}$  S. B. T.

46.00 Gulch course N. N. W. as usual

48.00 Top

52.00 Gulch course N. N. W

80.00 The cor. to Tps 13 & 14 N

R's 15 & 16 E

Land broken

Soil 3<sup>rd</sup> and 4<sup>th</sup> rate

Timber cedar pine & juniper  
 & heavily timbered land  
 80 cho

Nov. 14. 1893

## Exterior Boundaries T. 14 N. R. 15 E.

Chains

From the Cor. to Tps 13 & 14 N. R. 15  
& 16 E. hereintofore described

I run

North bet Secs 31 &amp; 36

Va.  $13^{\circ}56'E$ 

Through timber

40.00 Set a limestone  $14 \times 10 \times 6$  ins 10 ins  
in the ground for  $\frac{1}{4}$  Sec Cor marked  
 $\frac{1}{4}$  on W. face

from above

A pine 4 ins diam bears N.  $44^{\circ}W$ . 53 lks  
dist. marked  $\frac{1}{4}$  S. B. T.

A pine 6 ins diam bears S.  $63^{\circ}E$  34 lks  
dist. marked  $\frac{1}{4}$  S. B. T.

51.75 Cross gulch course C. S. E.

55.60 Trail course N. W.

80.00 Set a limestone  $16 \times 12 \times 10$  ins 4 ins in  
the ground for Cor to Secs 25, 30, 31 & 36

Exterior Boundaries T. 14 N. R. 15 E.

Chains.

marked with 5 notches on N and 1 notch  
on S. edge

from which.

A cedar 10 ins. diam bears S.  $43^{\circ}$  W. 48 lks dist  
marked T. 14 N. R. 15 E. S. 36 B. T.

A pine 4 ins. diam bears N.  $80^{\circ}$  30' W. 82 lks  
dist. marked T. 14 N. R. 15 E. S. 25 B. T.

A pine 10 ins. diam bears N.  $50^{\circ}$  E 66 lks  
dist. marked T. 14 N. R. 16 E. S. 30 B. T.

A pine 5 ins. diam bears S.  $55^{\circ}$  E 52 lks dist  
marked T. 14 N. R. 16 E. S. 31 B. T.

Land rolling

Soil 2<sup>d</sup> and 3<sup>d</sup> rates

Timber, pine and cedar 80 chs.

Heavily timbered land 80 chs

North bet Secs 25 & 30

N  $13^{\circ}$  55' E

Through timber

Exterior Boundaries T. 14 N. R. 15 E.

Chains

40.00 Set a sandstone 15 x 12 x 3 ins 10 ins  
in the ground for  $\frac{1}{4}$  Sec. Cor. marker  
 $\frac{1}{4}$  on W. face

from which

A pine 4 ins diam bears S.  $57^{\circ}$  E. 12 lks  
dist. marked  $\frac{1}{4}$  S. B. T.

A pine 7 ins diam bears N  $22^{\circ}$  W. 24 lks  
dist. marked  $\frac{1}{4}$  S. B. T.

78.70 Cross gulch and trail bearing N. W

80.00 Set a limestone 18 x 14 x 6 ins 12 ins  
in the ground for cor to Sec 19. 24  
25 & 30 marked with 4 notches on N  
and 2 notches on S edges

from which

A pine 8 ins diam bears S.  $50^{\circ}$  E. 20 lks  
dist. marked T. 14 N. R. 16 E. S. 30 B. T.

A pine 14 ins diam bears S.  $80^{\circ}$  30' W.  
17 lks dist. marked T. 14 N. R. 15 E. S. 25 B. T.

Exterior Boundaries T. 14 N. R. 15 E.

Plains

A pine 7 ins. diam bears N.  $65^{\circ}$  W. 35 lbs  
dist. marked T. 14 N. R. 15 E. S. 24 B. T.

A pine 15 ins. diam bears N.  $66^{\circ}$  E. 16 lbs dist.  
marked T. 14 N. R. 16 E. S. 19 B. T.

Land rolling.

Soil 2<sup>d</sup> and 3<sup>d</sup> rate

Timber, cedar and pine 80 lbs.

Heavily timbered land 80 lbs

North bet Secs 19 & 24

Wa  $13^{\circ} 55' E$

Through timber

40.00 Set a sandstone 16 X 14 X 10 ins 11 ins  
in the ground for  $\frac{1}{4}$  Sec cor. marked  
 $\frac{1}{4}$  on the face

from which

A pine 5 ins diam bears S.  $43^{\circ}$  E 62 lbs  
dist. marked  $\frac{1}{4}$  S. B. T.

A pine 10 ins. diam bears N.  $85^{\circ}$  W. 65 lbs



## Esterwin Boundaries T. 14 N. R. 15 E.

Chains

dist. marked  $\frac{1}{4}$  S. B. T.

79.00 Ester draw bears N , 1 chain wide

80.00 Set a limestone  $17 \times 12 \times 3$  ins 12 ins  
in the ground for cor to secs 13. 18. 19.  
& 24. marked with 3 notches one N  
and 2 edges

from which

A cedar 10 ins. diam bears S.  $8^{\circ}$  E. 80 lbs  
dist. marked T. 14 N. R. 16 E. S. 19 B. T.A cedar 4 ins. diam bears S.  $60^{\circ}$  W. 30 lbs  
dist. marked T. 14 N. R. 15 E. S. 24 B. T.A pine 4 ins. diam bears N.  $87^{\circ}$  E. 130 lbs  
dist. marked T. 14 N. R. 16 E. S. 18 B. T.A cedar 6 ins diam bears N.  $64^{\circ}$  W. 86 lbs  
dist. marked T. 14 N. R. 15 E. S. 13 B. T.

Land calling.

Soil 2<sup>d</sup> and 3<sup>d</sup> rateTimber, pine and cedar 80 chs.  
Beauty timbered 80 chs

## Exterior Boundaries T. 14 N. R. 15 E.

Chassis.

North bet Secs 13 &amp; 18

In draw Va.  $13^{\circ}55'E$ 

Through timber

1.65 Trail N.E.

27.00 Trail N.E.

Leave

35.00 Draw 1 ch. wide and trail cross N.N.W.

40.00 A Limestone in place  $15 \times 12$  ft and  
4 ins above ground which I mark  
with X at exact cor. point and  $\frac{1}{4}$   
on W. face for  $\frac{1}{4}$  Sec cor.

from which

A pinon 8 ins diam bears  $N. 41^{\circ} W. 18$  lbs  
diam. marked  $\frac{1}{4}$  S. B. F.

A pinon 12 ins diam bears  $S. 52^{\circ} E. 17$  lbs  
diam. marked  $\frac{1}{4}$  S. B. F.

51.60 Draw 2 chs wide and trail bear W.

50.00 Set a limestone  $15 \times 12 \times 6$  ins 10 ins  
in the ground for cor to Secs 7, 12, 13

Exterior Boundaries T. 14 N. R. 15 E.  
Chain.

and 18. marked with 2 notches on  
N. and 4 notches on S. ends

from which

A pinon 10 ins diam bears N.  $70^{\circ} 65'$

the dist. marked T. 14 N. R. 16 E. S. 7 B.T.

A pinon 6 ins diam bears S.  $60^{\circ} W. 10$  the

dist. marked T. 14 N. R. 15 E. S. 13 B.T.

A pinon 4 ins diam bears N.  $42^{\circ} W. 60$

the dist. marked T. 14 N. R. 15 E. S. 12 B.T.

A pinon 4 ins diam bears S.  $52^{\circ} E. 25$  the

dist. marked T. 14 N. R. 16 E. S. 18 B.T.

Land colling.

Soil 2<sup>d</sup> and 3<sup>d</sup> etc

Timber, cedar and pinon 80 chs.

Heavily timbered 80 chs

North bet Sec 7 & 12

On.  $13^{\circ} 54' E$

Through timber.

Exterior Boundaries T. 14 N. R. 15 E.

- Chain's
- 8.90 Enter draw, course East.
- 9.10 Trail bears E & W.
- 10.00 Leave draw.
- 15.00 Enter draw bears N & S.
- 22.00 Trail course N & W.
- 26.70 Trail course N & E.
- 30.00 Trail bears E & W.
- 31.00 Leave draw which forks N & E and N & W.
- 37.30 Small gulch course W.
- 40.00 Set a limestone  $15 \times 12 \times 10$  ins  $10$  ins  
in the ground for  $\frac{1}{4}$  Sec. Cor. marked  
 $\frac{1}{4}$  on W. face  
from which  
a pinion  $10$  ins diam bears N.  $38^{\circ}$  E  $29$  lks  
dist. marked  $\frac{1}{4}$  S. B. T.  
A pinion  $8$  ins. diam bears S.  $35^{\circ}$  W.  $4$  lks  
dist. marked  $\frac{1}{4}$  S. B. T.
- 41.00 Descend into gulch course S. S. W.

Exterior Boundaries T. 14 N. R. 15 E

Chain

- 45.00 Leave gulch.  
 53.00 Recross gulch bears N 6.  
 57.20 Trail course N 6. in gulch  
 56.00 Leave gulch on West bank  
 80.00 Set a bimetron 18x10x3 ins 12 ins  
 in the ground for cor to Secs 1, 6, 7  
 & 12 marked with 1 notch on N and  
 5 notches on S edges

from which

A pinon 8 ins diam bears S 26° E. 37 lks  
 dist. marked T. 14 N. R. 16 E. S. 7 B. T.

A pinon 8 ins diam bears S 45° W. 26 lks  
 dist. marked T. 14 N. R. 15 E S. 12 B. T.

A cedar 7 ins diam bears N 75° E 57 lks  
 dist. marked T. 14 N. R. 16 E S. 6 B. T.

A pinon 10 ins diam bears N 30° W. 104 lks  
 dist. marked T. 14 N. R. 15 E. S. 1 B. T.

Land rolling

## Exterior Boundaries T. 14 N. R. 15 E.

Chains

Set, 2<sup>d</sup> and 3<sup>d</sup> rate

Timber, cedar and pt. in 80 chs.

Heavily timbered land 80 chs

North bet Secs 1 &amp; 6

Ba.  $13^{\circ}54'E$ 

Through timber.

12.30 Trail course NE.

14.40 Trail course NE.

15.00 Trail course NE.

25.15 Trail course NW.

25.50 Trail course NW.

29.00 Gulch course NNE.

36.00 Descend into gulch course NNE.

40.00 Set a limestone 15 X 12 X 4 ins 10 ins  
in the ground for  $\frac{1}{4}$  Sec Cor. marked  
upon W. face

from which

A cedar 14 ins diam. bears S.  $22^{\circ}W$ . 40 lks

Exterior Boundaries T. 14. N. R. 15 E.  
Chanis.

dist. marked  $\frac{1}{4}$  S. B. T.

A pinon 4 ins. diam bears N.  $65^{\circ}$  E.

13 lbs dist. marked  $\frac{1}{4}$  S. B. T.

41.00 Bottom of gulch course N. N. E.

42.75 Leave gulch.

49.00 Trail and re-enter gulch course N. W.  
Course N. E

57.00 Trail. Leave gulch, and ascend.

61.00 Top of bank.

80.00 Set a limestone  $17 \times 15 \times 10$  ins  $12$  ins  
in the ground for cor to Tpo 14 & 15 N.  
R. 15 & 16 E. marked with 6 notches  
on each edge

four which

A pinon 12 ins diam bears S.  $22^{\circ} 30'$  W

86 lbs dist. marked T. 14. N. R. 15 E. S. 1 B. T.

A cedar 18 ins. diam bears S.  $83^{\circ}$  E 63 lbs

dist. marked T. 14. N. R. 16 E. S. 6 B. T.

A pinon 10 ins diam bears N.  $48^{\circ}$  E 16 lbs