

BOOK 1323

South and East

→ Boundaries ←

Fractional T. 26 N R 30 E

Lampport Can'l No 64.

1323

4-671

**FIELD NOTES**  
**GENERAL LAND OFFICE.**

Rec'd Oct 19 1900.

No. 323

D. 76 N. R. 30 E.

- Chains East on S. bdy. sec 32.  
Overhanging ground.  
Through scattering pine timber  
and thick pine and cedar.
- 1.20 Stake 20 lks. wide bears N.  
35° E.
- 33.00 Trail bears N. 35° E.
- 40.00 Set a sand stone 15x6x4 ins.  
in stony ground, in mound of  
stone for  $\frac{1}{4}$  sec. cor. marked  $\frac{1}{4}$  32  
on N. face 5 on S. face from which  
a pine 20 ins. in diam. bears  
S. 40° E. 9 lks. dist. marked  $\frac{1}{4}$  S.  
5 B.T.
- A pine 8 ins. in diam. bears  
N. 13° W. 68 lks. dist. marked  
 $\frac{1}{4}$  S. 32 B.T.
- 80.00 Set a sand stone 20x15x4 ins.  
13 ins. in the ground. for cor.  
to secs. 4. 5. 32 and 33. marked

South and ~~East~~ boundary

chains

with 4 grooves on E. and 2 grooves  
on W. faces from which.

A ~~disk~~ 5 ins. in diam. bears

N.  $17^{\circ}$  E 108 lks dist. marked

T. 26 N. R. 30 E S. 33 B. T.

A pine 20 ins. in diam bears

S.  $84^{\circ}$  E. <sup>110 lks dist</sup> marked T. 25 N. R. 30 E S. 4

B. T.

A pine 18 ins. in diam. bears

S.  $13^{\circ}$  N. <sup>80 lks dist</sup> marked T. 25 N. R. 30 E

S. 5. B. T.

A pine 22 ins. in diam bears

N.  $30^{\circ}$  W. <sup>19 lks dist</sup> marked T. 26 N. R. 30

E S. 37 B. T.

Land level and mountainous

Soil stony 3<sup>rd</sup> and 4<sup>th</sup> rate

Timber pine, juniper and cedar.

Mountainous land 80 chs.



9. 26 N. R. 30 E.

- chains East on S. bdy. sec. 33  
 Over rolling and  
 stony ground, through thick  
 cedar and pine timber.
- 30.00 Descend into canyon, bear N.  
 75° E.
- 38.00 Wash 50 lks wide 200 ft.  
 below top bear N. 75° E. *Reced*
- 40.00 Marked a cedar 8 ins. in  
 diam. for  $\frac{1}{4}$  sec. cor. marked  
 $\frac{1}{4}$  S. 33 on N. side 4 on S. side  
 from which.
- A cedar 5 ins. in diam. bear  
 S. 8° N. 15 lks dist. marked  
 $\frac{1}{4}$  S. 4 B.T.
- A cedar 5 ins. in diam.  
 bear N. 45° N. 18 lks. dist.  
 marked  $\frac{1}{4}$  S. 33 B.T.
- 42.00 Top bear N. 50° E.
- 67.00 A pine 15 ins. in diam. on line

South and ~~East~~ boundary

Chains

marked 2 notches on E and  
W. sides.

80.00

Set a sand stone  $20 \times 15 \times 4$  ins.  
on stony ground in mound  
of stone for vis. to secs. 3, 4, 33  
and 34 marked with 3 notches  
on E. and W. edges. from which.  
A pinion 10 ins. in diam.  
bears N.  $47^\circ$  E. 20 lks. dist.  
marked T. 26 N. R. 30 E. S.  
34 B.T.

A pinion 6 ins. in diam.  
bears S.  $43^\circ$  E. 65 lks. dist.  
marked T. 25 N. R. 30 E. S. 3 B.T.

A pinion 15 ins. in diam. bears  
S.  $27^\circ$  W. 38 lks. dist. marked  
T. 25 N. R. 30 E. S. 4 B.T.

A Cedar 5 ins. in diam.  
bears N.  $43^\circ$  W. 27 lks. dist.  
marked T. 26 N. R. 30 E. S. 33 B.T.

J. 26 Jr. R. 30 E.

Land mountainous and rolling  
Soil stony 4 ch. rate  
Timber pinion and cedar  
Mountainous and dense cedar  
and pinion 80 chs.

September 4<sup>th</sup> 1900  
I set off  $7^{\circ}10' N.$  on the decl.  
arc and at 12<sup>h</sup> 00 m. observe  
the sun on the meridian  
and obtain on the lat. arc  
the reading  $35^{\circ}36' N.$  which  
is the latitude, nearly.



chains

East on S. bdy sec. 34

Descend over rolling ground, through thick cedar and pinon timber

20.00

Wash 20 lks. wide bears

N.  $80^{\circ} E$ . Ascend

30.00

Top bears N.  $75^{\circ} E$ .

39.50

Wash 20 lks. wide bears

N.  $80^{\circ} E$ . Ascend

40.00

Exposed a sand stone in place  $20 \times 12$  ft. 4 ft. above surface I cut a cross (+) at exact cor. point, for  $\frac{1}{4}$  sec. cor. marked  $\frac{1}{4}$  in N. side of cross 3 S. of cross from which.

A pine 30 ins. in diam bears N.  $85^{\circ} W$ . 65 lks. dist. marked  $\frac{1}{4}$  S. 34 B.T.

A pine 30 ins. in diam bears S.  $80^{\circ} E$ . 55 lks. dist. marked

T. 26 N. R. 30 E.

- chains  $\frac{1}{4}$  S. 3 B. 1.
- " Corner faces in canyon 250  
ft. deep.
- 42.00 Wash N. 85° E.
- 45.00 Leave wash and ascend  
S. side of canyon
- 57.00 Top bears N. 50° E. Ascend
- 80.00 to a sand stone 18X10X4 ins.  
1 1/2 ins. in the ground for  
cov. to seis. 2, 3, 34 and 33  
marked with 4 notches on  
N. side 2 on E. side from  
which.
- A pinion 6 ins. in diam.  
bears N. 29° E. 50 lks dist.  
marked T. 26. N R. 30 E. S. 35 B. 1.
- A pinion 4 ins. in diam.  
bears S. 3° E. 61 lks. dist.  
marked T. 25 N R. 30 E. S. 2  
B. 1.



South ~~side~~ <sup>side</sup> East boundary

Chains

A cedar 15 ins. in diam  
bears S. 50° W. 135 lks dist.  
marked T. 25 N. R. 30 E S. 3 B.T.

A pine 6 ins. in diam.  
bears N. 74° W. 51 lks. dist.  
marked T. 26 N. R. 30 E S. 34 B.T.

Land mountainous and rolling  
Soil 3rd and 4th rate  
Timber pine, pinion and cedar  
Mountainous and timber 80 chs.

J. 26 J. R. 30 E.

- chains. East on S. bdy. sec 35  
Slight ascent  
through scattering cedar and  
large sagebrush
- 8.00 A pinion 10 ins. in diam. on  
line I mark with 2 notches  
on E. and W. sides
- 20.00 A pinion 10 ins. in diam on  
line I mark with 2 notches  
on E. and W. sides.
- 35.00 Bottom of hills and enter  
large valley. bears N. E. and  
S. W.
- 40.00 Set a sand stone 18x10x6 ins.  
17 ins. in the ground for  $\frac{1}{2}$  sec.  
cov. marked  $\frac{1}{4}$  35 on N. face  
2 on S. face and raise a  
mound of stone 2 ft. base  $1\frac{1}{2}$  ft.  
high N. of cov. pits impracticable  
from which

South and ~~East~~ boundary

- Chains
- A pinion 15 ins. in diam.  
 bears S. 70° E. 360 lks dist.  
 marked  $\frac{1}{4}$  S. 7 B.T. <sup>No other marks</sup>  
<sup>no other pins near</sup>
- 40.50 Wash 70 lks. wide bears  
 S. 45° E.
- 78.00 Wash 50. lks. wide bears  
 S. 70° E.
- 80.00 Set a sand stone 20 X 8 X 5 ins.  
 13 ins. in the ground for  
 cor. to sec. 1, 2, 35 and 36  
 marked with 5 grooves on  
 N. face and 1 groove on E. face.  
 and raised mound of stone 2 ft.  
 base  $1\frac{1}{2}$  ft. high N. of cor  
 pits impracticable.  
 Land, level and rolling  
 Soil, adobe and sandy <sup>rate</sup> 2nd and 4th  
 Timber a few scattering cedar and  
 large sage bush.  
 Mountainous and large sage bush 35 chs.



J. 26 N. R. 30 E.

- Chains East on J. bdy sec. 36.
- Over level ground.
- 7.00 Right bank of black creek  
100 yds. wide. bears S.
- 40.00 Set a sand stone 15X10X4 ins.  
10 ins. in the ground, for  $\frac{1}{4}$   
sec. cor. marked  $\frac{1}{4}$  36 on N.  
face 1 on S. face and raised  
a mound of stone 2 ft. base  
 $1\frac{1}{2}$  ft. high N. of cor. <sup>sets impracticable</sup>  
no timber.
- 67.00 South point of low ridge  
bears. N. and S.
- 80.00 Set a sand stone 20X12X5 ins.  
13 ins. in the ground, for  
5/8 p. cor. to secs. 1, 6, 31 and 36.  
marked with 6 notches on  
S. and N. sides and raised  
a mound of stone  $3\frac{1}{2}$  ft. base  
 $2\frac{1}{2}$  ft. high N. of cor.

1-9

BOOK 1323

South and East boundary

Pits impracticable, no  
timber.

Land level

Soil adobe 2nd rate

No timber

East  
J. 26 J. R. 30 E.

BOOK 1323

20

Chains

September 5<sup>th</sup> 1900

At 7<sup>1/2</sup> 0' A.M. l. m. t. I set off  
35° 36' on the lat. arc 6° 53' 44" on the decl. arc and determine  
a true meridian with the  
solar at the <sup>top</sup> cor. of sec's. 1, 6, 31 and 36  
Thence down

North bet. sec's. 31 and 36

Over rolling ground  
through scattering cedar and  
pinon timber.

29.50

Leave timber bears E. and St.

~~Slight ascent.~~

30.00

Bottom and inter valley bears  
E. and St.

40.00

Set a sand stone 15x10x4 ins  
10 ins. in the ground, for  $\frac{1}{4}$  sec.  
cor. marked #36 on St. face  
31 on E. face and dig pits  
18x18x12 ins. N. and S. of stone



South and East boundary

chains

3 ft. dist. and raised a mound of earth  $3\frac{1}{2}$  ft. base  $1\frac{1}{2}$  ft. high St. of cor.

80.00

Set a sand stone  $20 \times 20 \times 6$  ins.

13 ins. in the ground for cor to sec's 25, 30, 31 and 36 with 5 notches on N. and 1 notch S.

sides from which

A cedar 6 ins. in diam.

bears S  $72^{\circ}$  E. 257 lks dist.

marked T. 26. N. R. 316. S. 3131.

No other trees within limit.

Sand level and rolling  
Soil sandy and adobe red  
and 4th rate

Timber a few scattering cedar

J. 26 J. R. 30 E.

BOOK 1323

122

- |        |  |
|--------|--|
| chains | North bet. secs 25 and 30<br>Sept. 5 <sup>th</sup> 1900  |
|        | Over level ground  |
| 11.70  | Wash 50 lbs. wide 2 ft. deep<br>bars S. 30° W.   |
| 33.50  | Left bank of black creek<br>bars S. 45° W.   |
| 34.00  | Bottom of black creek bars<br>S. 45° W. Dry  |
| 34.70  | Right bank 30 ft. above<br>bottom  |
| 40.00  | Set a sand stone 15x10x6 ins.<br>10 ins. in the ground for<br>$\frac{1}{4}$ sec. cor. marked $\frac{1}{4}$ 25 on<br>N. face 30 on E. face. dig<br>pits 18x18x2 N. and S. of<br>stone 3 ft. dist. and raised<br>a mound of earth 3 $\frac{1}{2}$ ft. base<br>1 $\frac{1}{2}$ ft. high. N. of cor.<br>No trees near. |

523

BOOK 1323

South and East boundary

chains  
80.00

Set a sand stone  $16 \times 14 \times 5$  ins.  
10 ins. in the ground for cor.  
to secs. 19, 24, 25 and 30 with  
4 notches on N. and W. edges  
dig pits  $18 \times 18 \times 12$  ins. in  
each sec.  $5\frac{1}{2}$  ft. dist. and  
raised a mound of earth 4 ft.  
base 2 ft. high N. of cor.

Land level

Soil adobe 2nd rate

No timber



J. 26 N. R. 30 E.

BOOK 1323

24

- chains. North bet. secs. 19 and 24  
Overland
- 2.00 Black Creek 100 lks. wide  
25 ft. deep Dry bars  
S. 45° E.
- 40.00 Set a sandstone 15 X 8 X 5 ins.  
10 ins. in the ground, for  $\frac{1}{4}$   
sec. cor. marked  $\frac{1}{4}$ . 24 on N.  
face 19 on E. face and dig pits  
18 X 18 X 12 ins. N. and S. of  
stone 3 ft. dist. and raise  
a mound of earth  $3\frac{1}{2}$  ft.  
base  $1\frac{1}{2}$  ft. high N. of cor.  
No trees near.
- 60.20 Left bank of Black creek  
bars S. 80° N.
- 61.00 Wash bars S. 80° N.
- 62.50 Left bank 25 ft. above bot-  
tom bars S. 87° E.

South and East boundary

chains

80.00

Set a sand stone  $15 \times 14 \times 3$  ins.  
 10 ins. in the ground, for  
 cor. to secs. 13, 18, 19 and 24  
 marked with 3 notches on  
 N. and S. edges. and raised  
 a mound of stone 3 ft. base  
 $1\frac{1}{2}$  ft. high N. of cor.  
 pits impracticable

Land level

Soil Sandy and adobe  
 1<sup>st</sup> and 2<sup>nd</sup> Rate

No timber

J. 76 N. R. 30 E.

No. 1323

- |         |   |
|---------|---|
| chains. | North bet. secs. 13 and 18.   |
|         | Over level ground   |
| 20.00   | Black creek 110 lks. wide<br>bars S. $75^{\circ}$ N. 20 ft. deep  |
| 40.00   | Set a sand stone $20 \times 20 \times 4$ ins<br>14 ins. in the ground for $\frac{1}{4}$ sec.<br>cor. marked $\frac{1}{4}$ on N. face<br>18 on E. face and raised a<br>mound of stone $2\frac{1}{2}$ ft. base<br>$1\frac{1}{2}$ ft. high N. of cor.<br>pit impracticable |
| 57.80   | Wagon road to Gallup bars<br>E. end N.  |
| 76.50   | Intersect S. bdy. Navajo Indian<br>Reservation line,<br>Set a sand stone $20 \times 12 \times 4$ ins.<br>14 ins. in the ground for closing<br>cor. to secs. 13 and 18 marked with<br>4 notches C.C. on S. side and<br>6 notches on N. side and                          |



No 27.

BOOK 1323

BOOK 1323

~~South~~ and East boundary J. 26 N. R. 30 E.

chains.

raised a mound of stone  $2\frac{1}{2}$   
ft. base  $1\frac{1}{2}$  ft. high S. of cor.  
from which, the 44 mile cor.  
of the S. bdy of the Navajo  
Indian Reservation line  
bears E. 380 lks. dist. which  
is a sand stone  $10 \times 10 \times 4$  ins.  
in a small mound of stone.  
marked N. R. L. 44

Land level

Soil adobe and sandy  
No timber.

28

## Boundaries of T. 26. N.

BOOK 1323

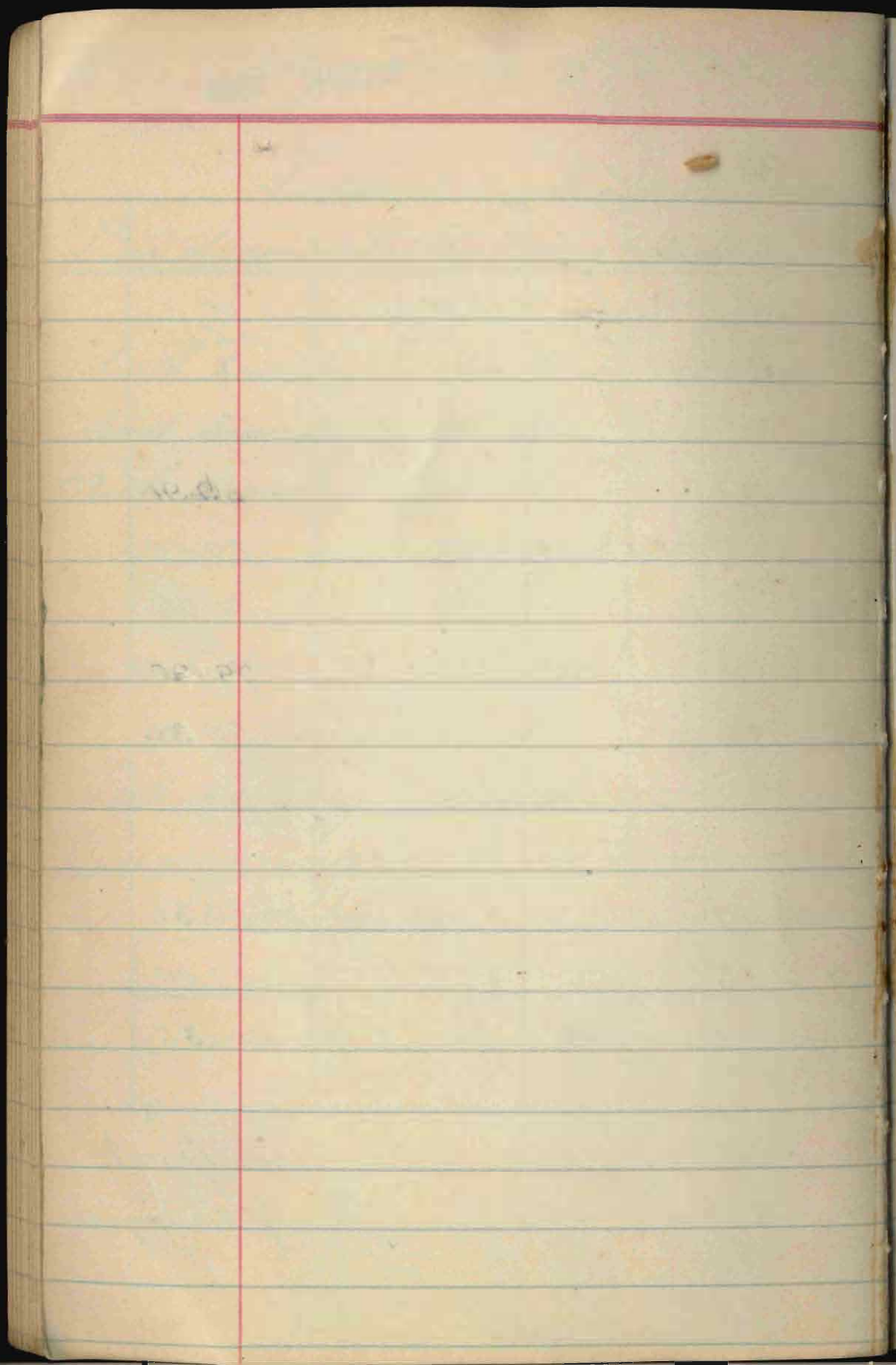
Line designated	Latitudes. True Bearing	Departures Distance
South boundary	East	chs 479.48
East boundary	North	316.50
North boundary	West	159.91
	S 89° 55' W	80.10
	West	80.06
	S 89° 56' W	79.90
	West	80.39
West boundary	South	316.15
Convergency		
Totals		
Error in Lat.		

and closing errors.

Latitudes		Departures	
N chs	S chs.	E chs 479.48	W chs.
316.50			159.91
	0.12		80.10
			80.06
	0.09		79.90
			80.39
	316.15		
-----		0.52	
316.50	316.36	480.00	480.36
316.36			480.00
-----			
.14	Error in Dep.		----- .36

James A. Sampson.  
U.S. Deputy Surveyor





List of Names.

BOOK

1323

30

A List of the Names of the Individuals  
 employed by James A. Laupt  
 U. S. Deputy Surveyor, to assist in running, meas-  
 uring and marking the lines and corners described  
 in the foregoing Field Notes of the survey of the  
 South and East boundary  
 lines of Township 26 N. R. 30 E.

of the Gila and Salt River Base and Meridian, in  
 the Territory of Arizona, showing the respective  
 capacities in which they acted.

- |                |           |
|----------------|-----------|
| Frank Walker   | Chainman. |
| Kooajo Charley | Chainman. |
| Black Wood     | Chainman. |
|                | Chainman. |
| Kooajo Pete    | Axeman.   |
| Black Wood     | Axeman.   |
|                | Flagman.  |

Final Oath of Assistants.

We hereby certify that we assisted James A. Sampson U. S. Deputy Surveyor, in surveying all those parts or portions of the South and East boundary lines of Township 26. N. R. 30. E.

of the Gila and Salt River Base and Meridian, in the Territory of Arizona, as are represented in the foregoing field notes as having been surveyed by him and under his direction; and that said Survey has been in all respects, to the best of our knowledge and belief, well and faithfully surveyed, and the corner monuments established according to the instructions furnished by the United States Surveyor General for Arizona.

Frank Walker Chainman.

Navajo <sup>his</sup> ~~mark~~ Charley Chainman.

Chainman.

Chainman.

Navajo <sup>his</sup> ~~mark~~ Pete Axeman.

Black <sup>his</sup> ~~mark~~ Wood Axeman.

Flagman.

Sworn to and subscribed before me, this 7th day of September, 1891/900

James A. Sampson Notary Public. U. S. Deputy Surveyor

[SEAL.]



## Final Oath of U. S. Deputy Surveyor.

I, James A. Lempert

U. S. Deputy Surveyor, do solemnly swear that in  
pursuance of a contract received from ~~Robert A.~~<sup>George A.</sup>  
~~Johnson~~, United States Surveyor-General for Ari-  
zona, bearing date of the 30<sup>th</sup> day of

April 1900 ~~189~~, I have well, faith-  
fully, and truly, in my own proper person, and in  
strict conformity with the instructions furnished by  
the United States Surveyor-General for Arizona,  
the Manual of Surveying Instructions, and the  
laws of the United States, surveyed all those parts

or portions of the South and East  
boundary lines of Townships  
26 N. R. 30 E.

of the Gila and Salt River Base and Meridian, in  
the Territory of Arizona, as are represented in the  
foregoing Field Notes as having been surveyed by  
me and under my direction; and I do further  
solemnly swear that all the corners of said surveys  
have been established and perpetuated in strict  
accordance with the Manual of printed instructions,  
the special instructions of the United States Sur-  
veyor-General for Arizona, and in the specific

31

33

manner described in the field notes, and that the foregoing are the true Field Notes of such survey; and should any fraud be detected I will suffer the penalty of perjury, under the provisions of an act of Congress approved August 8, 1846.

James O. Sargent  
U. S. Deputy Surveyor.

Sworn to and subscribed before me this 6<sup>th</sup>

day of October 1904 189

N. H. Layton  
Judge and ex officio clerk of the  
Probate Court, Coconino County, Arizona



BOOK 1323

U  
su  
A  
A  
S  
of  
the  
for  
an  
bet  
an  
cor  
ins  
Ge

de

Preliminary Oaths of Assistants.

We, Frank Walter, Navajo  
 and Charley and Black Wood <sup>Navajo Peter</sup> ~~and~~  
 do solemnly swear that we will well and faithfully  
 execute the duties of Chain Carriers; that we will  
 level the chain upon even and uneven <sup>and uneven</sup> ground, and  
 plumb the tally pins, either by sticking or dropping  
 the same; that we will report the true distance to  
 all notable objects, and the true lengths of all lines  
 that we assist in measuring, to the best of our skill  
 and ability, and in accordance with instructions  
 given us, in the survey of the South and  
 East boundary lines of  
 Township 26. N. R. 30 E.

of the Gila and Salt River Base and Meridian in  
 the Territory of Arizona.

Frank Walker Chainman.  
 Navajo <sup>his</sup> Charley Chainman.  
 Black <sup>mark</sup> Wood Chainman.  
 \_\_\_\_\_ Chainman.

Subscribed and sworn before me, this 4<sup>th</sup>

day of September 1891 1900  
 James A. Sampson  
 U.S. Dept of Survey <sup>Notary Public.</sup>

[SEAL.]



We, Navajo Pete

do solemnly swear that we will well and truly perform the duties of

Atman and  
Mound man

in the establishment of corners and other duties, according to instructions given us, and to the best of our skill and ability, in the survey of the

South and East boundary  
lines of Township 26 N. R 30 E.

of the Gila and Salt River Base and Meridian, in the Territory of Arizona.

Navajo <sup>his</sup> Pete  
mark

Subscribed and sworn to before me this 4<sup>th</sup> day

of September 1891

James A. Sampson  
Notary Public.

U.S. Deputy Surveyor

Index

Page

South Side T26N R30E 6  
 East " T26N "30E 20

S. 26 N., R. 30 E.

1

12

13 ~~26~~

24 24

25 22

31

32

33

34

35

36

20

6

~~8~~

10

12

16

18

1B

South and East boundary of

Field Notes of the Survey  
of the South and East  
boundary, Township 26 N.  
R. 30 E. 1 of the Gila and  
Salt River.

Meridian, Arizona.

As surveyed by

Jas. A. Lambert  
U. S. Deputy Surveyor  
under his contract No. 64

Dated April 30<sup>th</sup> 1900.

Survey commenced Sept. 3<sup>rd</sup> 1900.

Survey completed Sept. 7<sup>th</sup> 1900



The instrument was examined tested<sup>IC</sup>  
on the true meridian at Tucson  
found correct by the Surveyor General  
for Arizona Aug. 12<sup>th</sup> 1900

BOOK 1323

J. 26 N. R. 30 E.

No. 1323

Survey commenced Sept. 3<sup>rd</sup> 1900  
and executed with a theodolite  
with a solar attachment No. 15  
Made by H. and L. E. Tinsley.

The horizontal limb is provided  
with two opposite verniers read-  
ing to one minute 1' of arc:

Which is also the least count  
of the <sup>vertical</sup> Latitude and Declination Arcs.

It begins at the Township Cor.  
between Tps. 25 and 26 North  
Rs. 29 and 30 East.

It is a Lava Stone, 24x14x6  
ins. 6 ins above the ground, marked  
and witnessed as described by the  
Surveyor General.

Latitude  $35^{\circ} 36'$  North Longitude  
 $109^{\circ} 21'$  W.

In order to test the solar apparatus  
by comparing the results of the

## South and East barn.

chains

observations on the Sun, made during A. M. and P. M. hours with a true meridian, determined by observations, on Polaris I found as follows.

At 4<sup>h</sup> 0' local mean time I set off 35° 36' N. on the latitude arc, 7° 29' N. on the declination arc, and mark the true meridian, thus determined with the solar, by a cross on a stone firmly set in the ground, 5 chs. N. of the instrument.

At 8<sup>h</sup> 35' P. M. m. t. I observe Polaris at Eastern elongation, in accordance with instructions, in the manual and mark the true line thus determined, by a mark cut in wooden stake firmly set in the ground



day J. 26 N. R. 30 E.

chains 5 chains South of my station.  
Sept. 3<sup>rd</sup> 1900

Sept. 4<sup>th</sup> 1900

At 6<sup>h</sup> 30' A. M. local m. t. I lay off the azimuth of Polaris  $10^{\circ} 30'$  to the West and mark the true meridian, thus determined by cutting a small groove in the stone set Sept. 3<sup>rd</sup> on which the true meridian falls 0.26 ins. west of the mark determined by the solar.

At 7<sup>h</sup> A. M. I set off  $35^{\circ} 36'$  on the east arc  $7^{\circ} 16' 06''$  N. on the decl arc and mark the true meridian determined with the solar by a cross on the stone already set 5 Chs. N. of my station, this mark falls 0.6 ins. E. of the

South and ~~East~~ boundary

chains

true meridian established by the Polaris observation.

The solar apparatus by P. M. and A. M. observations define positions for the true meridian about  $10' 13''$  West and  $0' 34''$  East of the true meridian, established by the Polaris observation.

therefore I conclude that the adjustment of the instrument are satisfactory.

The magnetic bearing of the true meridian at 7 A.M. is  $N. 13^{\circ} 17' E.$  the angle thus determined reduced by the table page 100 give the mean mag. declination.  $13^{\circ} 15' E.$

From the township cor. above described run Sept. 4<sup>th</sup> 1900

J. 26 N. R. 30 E.

shams

East m S. bdy. sec 31

Over level ground, through  
thick pine timber and oak  
bush.

3942

Set a sand stone, 25x18x6 ins.

17 ins in the ground, for  $\frac{1}{4}$  sec.

cor. marked  $\frac{1}{4}$  S. 31 on N. face  
6 on S. face

From which a pine 10 ins. in  
diam. bears N.  $40^{\circ}$  E. 53 lks.  
dist. marked  $\frac{1}{4}$  S. 31 B. T.

A pine 10 ins. in diam. bears  
S.  $14^{\circ}$  E. 9 lks dist. marked  
 $\frac{1}{4}$  S. 6 B. T.

7948

Set a sand stone 22x15x6 ins.

on stony ground in mound of  
stone for cor. of secs. 5, 6, 31 and 32  
marked with notch on N.

and 5 notches on E. faces from  
which



## South and East boundary

chains

A pine 24 ins. in diam.  
 bears N.  $61^{\circ}$  E. 90 lks dist. marked  
 T. 26 N. R. 30 E. S. 32 B. T.

A pine 16 ins. in diam.  
 bears S.  $39^{\circ}$  E. 219 lks dist.  
 marked T. 25 N. R. 30 E. S. 5 B. T.

A pine 26 ins. in diam. bears  
 S.  $27^{\circ}$  N. 250 lks dist. marked  
 T. 25 N. R. 30 E. S. 6 B. T.

A pine 15 ins. in diam. bears  
 N.  $30^{\circ}$  W. 255 lks dist. marked  
 T. 26 N. R. 30 E. S. 31 B. T.

Land, level

Soil, stony and sandy and much  
 rate.

Timber, pine and oak

Heavy timber and oak brush

79.48 chs.

