

*Index*

*See Index*

# FIELD NOTES

1401

OF

No. 1401

The *Extension* Lines of

Township *13* Range *17*

*Section* Meridian *17*

*as part of the* BY *the* *stang* *76.*

*W. A. Cook* Deputy Surveyor,

under his contract of *July* 188*2*

Survey commenced *January* 188*6*

Survey completed *February* 188*6*

BOOK 1401

Platted by ..... 188

Copied for Washington by ..... 188

Copied for Register by ..... 188

No. 1401



Index

Retracing

		Page
W	-T. 12 N; R. 27 E.	1
E	- " 13 " ; " 25 "	9
<del>W</del>	<del>" 17 " ; " 25 "</del>	
4 <sup>th</sup>	Standard North (along)	
	South Bdy T. 17 N; R. 22 E.	17
N Bdy	" 17 N, R. 22 E	26.
3 <sup>rd</sup>	Standard North (along)	
	South Bdy. T. 13 N; R. 19 E.	35
	and	
	South Bdy. T. 13 N; R. 18 E.	49

Book No 1401

BOOK 1401

6	7	8	9	10	11
22					12
21	17	18	19	20	21
20	16	17	18	19	20
19	15	16	17	18	19
18	14	15	16	17	18
17	13	14	15	16	17
16	12	13	14	15	16
15	11	12	13	14	15
14	10	11	12	13	14
13	9	10	11	12	13
12	8	9	10	11	12
11	7	8	9	10	11
10	6	7	8	9	10
9	5	6	7	8	9
8	4	5	6	7	8
7	3	4	5	6	7
6	2	3	4	5	6
5	1	2	3	4	5
4					
3					
2					
1					

6	7	8	9	10	11
22					12
21	17	18	19	20	21
20	16	17	18	19	20
19	15	16	17	18	19
18	14	15	16	17	18
17	13	14	15	16	17
16	12	13	14	15	16
15	11	12	13	14	15
14	10	11	12	13	14
13	9	10	11	12	13
12	8	9	10	11	12
11	7	8	9	10	11
10	6	7	8	9	10
9	5	6	7	8	9
8	4	5	6	7	8
7	3	4	5	6	7
6	2	3	4	5	6
5	1	2	3	4	5
4					
3					
2					
1					

T. 13 N. R. 19 E

BOOK 1401

31 32 33 34 35  
p. 35 36 37 40 41 42

6	7	8	9	10	11
22					12
21	17	18	19	20	21
20	16	17	18	19	20
19	15	16	17	18	19
18	14	15	16	17	18
17	13	14	15	16	17
16	12	13	14	15	16
15	11	12	13	14	15
14	10	11	12	13	14
13	9	10	11	12	13
12	8	9	10	11	12
11	7	8	9	10	11
10	6	7	8	9	10
9	5	6	7	8	9
8	4	5	6	7	8
7	3	4	5	6	7
6	2	3	4	5	6
5	1	2	3	4	5
4					
3					
2					
1					

BOOK 1401

6	7	8	9	10	11
22					12
21	17	18	19	20	21
20	16	17	18	19	20
19	15	16	17	18	19
18	14	15	16	17	18
17	13	14	15	16	17
16	12	13	14	15	16
15	11	12	13	14	15
14	10	11	12	13	14
13	9	10	11	12	13
12	8	9	10	11	12
11	7	8	9	10	11
10	6	7	8	9	10
9	5	6	7	8	9
8	4	5	6	7	8
7	3	4	5	6	7
6	2	3	4	5	6
5	1	2	3	4	5
4					
3					
2					
1					

For preliminary notes and description of instrument used see Book No. 1

## Retracing

W. boundary, T. 12 N., R. 27 E., S. 2d. R. M.

No. 1401

Chains

Before proceeding with the retracing of this boundary, I made a change of 10 minutes in the latitude arc of my Solar Compass, by adding same to the reading previously given and at noon verified and corrected same, by observation on the sun. I also further tested instrument by reversing. I took the latitude and found it to be  $34^{\circ} 21'$  North. From the cor to T. 11<sup>th</sup> & 12<sup>th</sup> N., R. 26<sup>th</sup> & 27<sup>th</sup> E., which is a sandstone, marked with 6 notches on each edge and with a stone mound alongside, I run North on a random line, bet. Secs 27<sup>th</sup> & 36<sup>th</sup>.  
 Va.  $12^{\circ} 33'$  East.

Descend gradually.

40.18 To old 1/4 sec. cor., which is a sandstone, set firmly in the

W. boundary T. 12 N., R. 27 E., S. 30 S. R. 23.

Chains

ground, marked  $1/4$  on W. face,  
with pits  $18 \times 18 \times 12$  ins. N. end  
of stone,  $5 \frac{1}{2}$  ft. dist, and a  
mound of earth, along side. I  
rebuilt mound, making it  
 $1 \frac{1}{2}$  ft. high,  $3 \frac{1}{2}$  ft. base.

80.25 To old cor. to secs. 25, 30, 31 & 36,  
which is a sandstone, set firmly  
in the ground, marked with 1  
notch on S. <sup>end</sup> 5 notches on N  
edges; with pits in each sec.,  
and a mound of earth along side.  
I rebuilt mound, making it  
2 ft. high,  $4 \frac{1}{2}$  ft. base.

Land rolling.

Soil 3<sup>rd</sup> rate.

Vegetation, bunchgrass.

W. boundary T. 12 N., R. 27 E., S. 4<sup>th</sup> & S. R. M.

Chavis.

North on a random line, bet. secs. 25 & 30,

Wa.  $12^{\circ} 33'$  East.

Descend gradually.

28.75 Cross road, runs E. & W.

40.00 To a point 54 lks. East of old  
 14 sec. cor., which is a sandstone,  
 set firmly in the ground, marked  
 14 on W. face and with a mound  
 of stone along side. I rebuilt  
 mound, making it of proper size.

The return course is therefore  $S. 46^{\circ} E.$

50.00 To a point 30 lks. E. of old cor.  
 to secs. 19, 24, 25 & 30, which  
 is a sandstone, set firmly in the  
 ground, marked with 2 notches  
 on S. & 4 notches on N. edges and  
 with a stone mound, in good  
 order, along side.

The return course is therefore  $S. 26^{\circ} E.$

Land rolling. Soil 3<sup>rd</sup> rate.

Vegetation, bunch grass.

W. boundary, T. 12 N., R. 27 E., S. 4<sup>th</sup> & S. R. M.

Chains

North on a random line, bet. sec. 19 & 24.

Pa.  $12^{\circ} 33'$  East.

Descend gradually.

- 40.14 To old '14 sec. cr., which is a sandstone, set firmly in the ground, marked '14 on W. face and with a stone mound in good order, alongside.
- 51.90 Foot of hill, bears N.  $45^{\circ}$  W and S.  $45^{\circ}$  E, and along valley.
- 80.20 To old cr. to sec. 13, 18, 19<sup>th</sup> & 24, which is a sandstone, set firmly in the ground, with 3 notches marked on N. & S. edges; with pits in each sec., and with a mound of earth, in good order, alongside. Land hilly <sup>and</sup> level. Soil 3<sup>rd</sup> rate. Vegetation, bunchgrass.

W. boundary, T. 12 N., R. 27 E., G. 2 S. R. M.

Stations.

North on a random line, bet. sees. 10<sup>th</sup> & 18<sup>th</sup>

Var. 12° 33' East.

Over level valley.

35.30 Cross road, bears N. 40° E. & S. 40° W.

40.00 To old 14 sec. cor., which is a sandstone, set firmly, in the ground, marked 14 on W. face; with pits, N. & S. of stone, 5 1/2 ft. dist, and a mound of earth, 1 1/2 ft. high, 3 1/2 ft. base, alongside.

74.00 N. side of valley and ascend gradually.

80.13 To old cor. to sees. 7, 12, 13<sup>th</sup> & 18<sup>th</sup>, which is a sandstone, marked with 4 notches on S. & 2 notches on N. edges, with a stone mound, partly destroyed, alongside. I rebuild mound, making it of proper size.

Land level and rolling.

Soil: 3<sup>rd</sup> rate.

Vegetation, bunchgrass.



W. boundary T. 12 N., R. 27 E., S. 4<sup>th</sup> S. R. 21.

## Chains

North on a random line, bet. secs. 7<sup>th</sup> & 12.Va.  $12^{\circ} 33'$  East.

Ascend gradually.

40.00 To old '14 sec. cor., which is a sandstone, marked '14 on W. face, with a stone mound in poor condition alongside. I rebuild mound, making it of proper size.

80.34 To old cor. to secs. 1, 6, 7<sup>th</sup> & 12, which is a basalt stone, marked with 5 notches on S. <sup>4<sup>th</sup></sup> & 1 notch on N. edges, with a stone mound, in good order, alongside.

Land rolling.

Soil 3<sup>rd</sup> rate.

Vegetation, bunchgrass.

W. boundary T. 12 N., R. 27 E., S. 1/4 S. R. M.

Schauis

North and random line, bet. secs. 1 & 6.

Gr. 12° 38' East.

Ascend gradually.

40.00

To old '4 sec cor, which is a sandstone, set firmly in the ground, marked '4 on W. face, with a stone mound in good order, along side.

100.54

To old closing cor. to Tps. 12 N.,  
R. 26<sup>th</sup> & 27 E., which is 33.77 chs.  
W. of Standard Cor. to Tps. 13 N.,  
R. 26<sup>th</sup> & 27 E. which is a post  
4 in sq. properly marked and selected  
- with marked stone in earth  
mound - with pits -

The old closing cor. being in poor  
condition, I destroy all traces of it,  
and set a basalt stone, 16 x 9 x 3 in.,  
11 in. in the girth, marked C. C.,  
with C notches on E, E. & W. edges

W. boundary T. 12 N., R. 27 E., S. 4 W. of R. M.

Chains.

and raised a mound of stone  
alongside. Pits impracticable.

Land rolling.

Soil 3<sup>rd</sup> rate.

Vegetation, bunchgrass.

January 8<sup>th</sup> 1883.

E. boundary S. 13 N., R. 25 E., T. 4 S. R. 21 W.

Maui

Before proceeding with the retracings of this boundary, I made a change of 5 minutes in the latitude arc of my solar compass, by adding same to the reading previously given and at noon verified and corrected same, by observation on the sun. I also further tested instrument by running. I took the latitude <sup>then</sup> found it to be  $34^{\circ} 26'$  North.

From the Standard Cor. to Tps. 13 N., R. 25 and 26 E., which is a post with marked stone, set firmly in the ground, marked S. E. S. 13 N. on N.

R. 26 E., S. 31 on E. and

R. 25 E., S. 36 on W. faces, with 6 notches on N., E. & W. faces; with pits N., E. & W. of post, 6 ft. dist., & a mound of earth in good order around post,

## Retracing

BOOK 1401  
E. boundary T. 13 N., R. 25 E., S. 30 S. R. W.

Chains.

I run

North on a random line, bet. secs. 31 &amp; 36.

Crs.  $13^{\circ} 36'$  East.

Over rolling land.

40.13 To a point 48 lks. W. of old 14 sec. cor., which is a post, with marked stone, set firmly in the ground, marked 14 S. on W. face, with pits N. and S. of post, 5 1/2 ft. dist., and a mound of earth, in good order, around the post.

The return course is therefore S. 41' W.

80.52 To a point 18 lks. W. of old cor. to sec. 25, 30, 31 and 36, which is a post, with marked stone, set firmly in the ground, marked

T. 13 N., S. 30 on N. E.

R. 26 E., S. 31 on S. E.

R. 25 E., S. 36 on S. W. and

S. 30 on N. W. faces, with 1 notch on S. and 5 notches on N. edges and a mound

E. boundary T. 13 N., R. 25 E., S. 40 S. R. M.

Chains.

of stone around post. The mound,  
being in poor condition, I rebuilt it,  
making it of proper size.

The return course is therefore S. 15° W.

Land rolling. Soil 3<sup>rd</sup> rate.

Vegetation, bunchgrass.

North on a random line, bet. secs. 20 & 30.

Ca. 130° 36' East.

Over rolling land.

40.38 To a point 33 lks. W. of old 1/4 sec.  
cor., which is a post, with marked  
stone, set firmly in the ground, marked  
1/4 c. on W. face, with pits, N 2° S. of  
post, 5 1/2 ft. dist, and a mound of  
earth around post. The mound, being  
in bad order, I rebuilt it, making it  
1 1/4 ft. high, 3 1/4 ft. base.

The return course is, therefore S. 28° W.

73.30 Cross Holbrook road, trans N. 48° W. S. 40° S.

80.58 To a point 40 lks. W. of old cor to sec.

boundary T. 13 N., R. 25 E., G. & C. R. M.

Chamis.

19, 24, 25<sup>th</sup> and 30, which is a sandstone, set firmly in the ground, marked with 2 notches on S. <sup>and</sup> 4 notches on N. edges, with pits in each sec, 5<sup>1</sup>/<sub>2</sub> ft. dist, and a mound of earth in good order, along side.

The return course is therefore S. 34 W.

Land rolling. Soil 3<sup>rd</sup> rate.

Vegetation, bunchgrass.

North and random line, bet. secs. 19<sup>th</sup> and 24.

Ca. 13° 36' East.

Over rolling land,

40.19 To a point 24 lks. W. of sec. 14 sec. cor., which is a post, with marked stone, set firmly in the ground, marked 1/4 on W. face, and a mound of stone, in poor condition, around post. I would mound, making it of proper size.

The return course is therefore S. 21 W.

80.61 To a point 42 lks. W. of sec. cor. to

E. boundary T. 13 N., R. 25 E., S. 1<sup>st</sup> S. R. M.

Stations

secs. 13, 18, 19<sup>th</sup> & 24, which is a post, with marked stone, set firmly in the ground, marked

T. 13 N., S. 1<sup>st</sup> on N.E.

R. 26 E., S. 19 on S.E.

R. 25 E., S. 24 on S. W. and S. 13 on N. W.

faces, with 3 notches on S. <sup>1<sup>st</sup></sup> on N. faces and a mound of stone, in poor condition, around post. I rebuilt mound, making it of proper size.

The return course is therefore S. 36° W.

Land rolling. Soil 3<sup>rd</sup> rate.

Vegetation, bunchgrass.

North on a random line, bet. secs. 13<sup>th</sup> and 18.

Cr. 13° 36' East.

Over rolling land.

37.50 Enter Juniper bush, bear N. 65° W. <sup>1<sup>st</sup></sup> on S. 65° E.

38.10 Ascend gradually.

40.22 To a point 20 lks. W. of old #4 sec. cor.



BOOK 1401  
E. boundary T. 13 N., R. 25 E., S. 1/2 S. R. 1/2 W.

## Chains.

which is a post, with marked stone, set firmly in the ground, marked  $\frac{1}{4}$  c. on W. face and with a stone mound in good order, around post.

The return course is therefore S. 17° W.

47.00 Top of hill, bears N. 72° W.  $\frac{3}{4}$  c. 72° E.  $\frac{3}{4}$  c. descends

80.37 To a point 29 lks. W. of old cor. to sec.

7, 12, 13 and 14, which is a post, with marked stone, set firmly in the ground, marked T. 13 N., S. 7 and N. E.

R. 26 E., S. 18 and S. E.

R. 25 E., S. 13 on S. W.  $\frac{3}{4}$  c. 12 on N. W. faces, with 4 notches on S.  $\frac{3}{4}$  c. 3 notches on N. edges; with pits in each sec, 5  $\frac{1}{2}$  ft. dist, and a mound of earth, around post. The pits & mound, being in poor condition, I raised the pits, making them 18 x 18 x 12 ins., and raised the mound, making it 2 ft.

high 4  $\frac{1}{2}$  ft. base, around post.

The return course is therefore S. 25° W.

Land rolling  $\frac{3}{4}$  a tully. Soil 3<sup>rd</sup> rate.

Vegetation, bunched grass.

E. boundary T. 13 N., R. 25 E., S. 6 and S. R. 1

Chassis  
 10/1

North on a random line, bet. sec. 7 & 12,  
 Va. 130° 36' East.

Over rolling land.

410.32 To a point 43 lks. W. of old  $\frac{1}{4}$  sec. cor, which  
 is a post, with marked stone, set firmly  
 in the ground, marked  $\frac{1}{4}$  S. on W. face, with  
 pits (which I dig, making them 18 x 18 x 12 ins)  
 $\frac{1}{4}$  in S. of post, and a mound of earth,  
 (which I mounded to be 1 $\frac{1}{2}$  ft. high, 3 $\frac{1}{2}$  ft. base)  
 around post.

The return course is therefore S. 37' W.

80.69 To a point 22 lks. W. of old cor. to sec. 1, 6, 7 & 12,  
 which is a post, with marked stone, set firmly  
 in the ground, marked T. 13 N., S. 6 on N. E.;  
 R. 26 E., S. 7 on S. E.; R. 25 E., S. 12 on S. W. and  
 S. 1 on N. W. face, with 5 notches on S. & 1 notch on  
 N. edges; with pits  $\frac{1}{4}$  in a mound of earth in  
 poor condition. I dig pits, making them  
 18 x 18 x 12 ins. in each sec, 5 $\frac{1}{2}$  ft. dist, & mounded  
 around to be 2 ft. high, 4 $\frac{1}{2}$  ft. base around post.  
 The return course is therefore S. 19' W.  
 Land rolling. Soil 3<sup>rd</sup> rate.  
 1/4 station. bunchgrass.



Retracing 4<sup>th</sup> Standard line N.,

along  
S. boundary T. 17 N., R. 22 E., S. 31 and S. R. M.

### Chain

From the Standard Cor. to Tps. 17 N.,  
R. 22<sup>nd</sup> and 23<sup>rd</sup> E., which is a post,  
set firmly in the ground, with  
marked stone, marked  
S. E. T. 17 N. or N.

R. 23 E., S. 31 on E. and  
R. 22 E., S. 36 on W. faces, and 6 notches  
on N., E. <sup>3/4</sup> W. faces; with pits  
crosswise in each line, N., E. <sup>3/4</sup> W.  
of post and a mound of earth,  
in good condition, around post,  
Iron

West on a random line, on S. boundary of sec. 36,

Ca. 13° 42' East

Ascend gradually.

40.40 To old Standard 1/4 sec. cor., which is a  
marked stone, deposited in the ground,  
with pits E. <sup>3/4</sup> W. of cor., 5<sup>1/2</sup> ft.  
dist., and a mound of earth, in  
good order, over it. In E. pit, a stake,  
marked 6148 on N. face.

8 Retracing 4<sup>th</sup> Standard line N,  
along  
BOOK 1401  
S. boundary C. 17 N., R. 22 E., G. and S. R. 11.

Chains

S. 45 To a point 8 E. N. North of old cor.  
to see, 35<sup>th</sup> and 36, which is a post,  
set firmly in the ground, with  
marked stakes, marked

S. C. C. 17 N., R. 22 E. and N.

S. 36 and C. 35

S. 35 and W. faces with 1 notch on  
E. <sup>and</sup> 5 notches on W. faces; with  
pits, N., E. & W. of post, 5<sup>14</sup> ft. dist,  
and a mound of earth, in good  
order, around post.

The return course is therefore N. 89° 51' E.

Land rolling.

Soil 3<sup>rd</sup> rate.

Vegetation, bunchgrass.

along

S. boundary T. 17 N., R. 22 E., S. and S. R. M.

Chain

West on a random line, on S. boundary sec. 35.  
Val.  $13^{\circ} 42'$  East.

Ascend.

1.37 Top of Hill, trans N. and S. and descend.

40.20 To a point 10 lks. North of old Standard 14 sec. cor, which is a marked stone, deposited in the ground with pits E. and W. of cor,  $5\frac{1}{2}$  ft. dist, and a mound of earth, in good order, over it. In E. pit, a stake, marked S. E. 14 S. on N. face.

The return course is therefore  $N. 89^{\circ} 07' E.$

80.37 To a point 27 lks. North of Standard cor. to secs. 34 and 35, which is a sandstone, set firmly in the ground, marked S. E. with 2 notches on E. and 4 notches on W. faces, with pits N. E. and W. of stone,  $5\frac{1}{2}$  ft. dist, and a mound of earth, in good order, alongside.

The return course is therefore  $N. 89^{\circ} 07' E.$

Retracing 4<sup>th</sup> the Standard Line N,

BOOK 1401

along

S. boundary T. 17 N., R. 22 E., S. & S. R. W.

chains.

Land rolling.

Soil 3<sup>rd</sup> rate.

Vegetation, bunchgrass.

West on a random line, on S. boundary sec. 34,

Var.  $13^{\circ} 42'$  East.

Over rolling land.

20.41 Ascend gradually.

40.21 To a point 4 lks. North of old Standard '14 sec. cor, which is a marked stake, deposited in the ground, with pits E. & W. of cor.  $5\frac{1}{2}$  ft. dist., and a mound of earth, in good order, over it. In E. pit, a stake, marked S. C. '14 S. on N. face.

The return course is therefore  $N. 89^{\circ} 07' E.$

80.41 To a point 4 lks. North of old Standard cor to secs. 33<sup>rd</sup> and 34,  
which is a sandstone, set firmly in the ground, marked S. C. with

Retracing 4<sup>th</sup> Standard line N.

S. boundary T. 17 N., R. 22 E., G. & S. R. M.

Chain

Notches on E. & W. edges, with  
pits N. E. & W. of stake, 5<sup>1</sup>/<sub>2</sub> ft.  
dist., and a mound of earth, in  
good order, alongside.

The return course is therefore  $N. 89^{\circ} 57' E.$

Land rolling.

Soil 3<sup>rd</sup> rate.

Vegetation, bunchgrass.

West on a random line, on S. boundary of sec. 33.

Wa.  $13^{\circ} 42' East.$

Over high, rolling prairie.

40.17 Is a point 4 lks. North of old  
Standard 14 sec. cor, which is a  
sandstone, set firmly in the ground,  
marked S. Co. 14 on N. face, with pits  
E. & W. of stake, 5<sup>1</sup>/<sub>2</sub> ft. dist., and  
a mound of earth, in good order,  
alongside.

The return course is therefore  $N. 89^{\circ} 57' E.$

80.38 Is a point, 13 lks. North of old Standard



Retracing 4<sup>th</sup> Standard line N.

BOOK 1401

S. boundary, T. 17 N., R. 22 E., S. 1/4 S. R. 10.

Observations.

cor. to secs. 32 and 33, which is a sandstone, set firmly in the ground, marked S. E. with 2 notches on N. and 4 notches on E. edges, with pits N. E. and W. of stone, 5 1/2 ft. dist., and a mound of earth, in good order, along side.

The return course is therefore N. 89° 49' E.

Land rolling.

Soil 3<sup>rd</sup> rate.

Vegetation, bunchgrass.

West on a random line, on S. boundary of sec. 32.

On 130° 42' East.

Over high rolling prairie.

40. 30

Is a point 10 lks. North of sec Standard 14 sec. cor., which is a marked stone, deposited in the ground, with pits E. and W. of cor., 5 1/2 ft. dist., and a mound of earth, in good order, over it. On E.

Retracing 4<sup>th</sup> Standard line N., 23

along

S. boundary T. 17 N., R. 22 E., G. & S. R. M.

No. 1401

Chains

Set a stake, marked S. C. 448 on N. face.

The return course is therefore  $N. 89^{\circ} 51' E.$

St. 44 To a point 34 lks. North of old Standard Cor. to secs. 31 and 32, which is a sandstone, set firmly in the ground, marked S. C. with 5 notches on E. & 1 notch on W. edges, with pits, N. E. & W. of stake, 5 1/2 ft. dist., and a mound of earth, in good order, alongside.

The return course is therefore  $N. 89^{\circ} 31' E.$

Land rolling.

Soil 3<sup>rd</sup> rate.

Vegetation, bunchgrass.

West on a random line, over boundary sec. 31,

Val.  $13^{\circ} 42' East.$

Ascend gradually.

29.92 Cross road, bears N.W. & S.E.

40.15 To a point 30 lks. North of old

24 Retracing 4<sup>th</sup> Standard Line N,  
BOOK 1401 along  
S. boundary T. 17 N., R. 22 E., G. & S. R. M.

Chain's.

Standard 1/4 sec. cor., which is a  
marked stone, deposited in the  
ground, with pits E. & W. of cor.,  
5-1/2 ft. dist., and a mound of earth,  
in good order, over it. In E. pit,  
a stake, marked S. E. 1/4 S. on N. face.

The return course is therefore N. 89° 36' E.

60.40 Cross road, trans N. and S.

72.40 Top of Mesa, trans E. & W. and  
descend gradually.

80.40 To a point 55 lks. North of old  
Standard cor. to Tps. 17 N., R. 21 & 22 E.,  
which is a post, set firmly in the  
ground, with marked stone, marked  
S. E. T. 17 N. in N.

R. 22 E., S. 31 on E. face.

R. 21 E., S. 36 on W. faces, with 6  
notches on N., E. & W. faces; with  
pits, N., E. & W. of post, 6 ft. dist.,  
and a mound of earth, in good  
order, around post.

Retracing 4<sup>th</sup> Standard line N,

along

BOOK 1401

S. boundary T. 17 N, R. 22 E, C. 4th. R. M.

The return course is therefore  $N. 59^{\circ} 13' E.$

Land rolling.

Soil 3<sup>rd</sup> rate.

Vegetation, bunchgrass.

I carefully examined the adjustments of my solar compass today, particularly the latitude & reversing apparatus and found them correct.

Mar. 8<sup>th</sup> 1883.

W. boundary T. 17 N., R. 23 E., G. & S. R. M.

BOOK 1401

Chains

From the Standard cor. to Tps. 17 N.,  
recently described by me,  
R. 21<sup>4</sup> W. 23 E., 1/4 1/4

North on a random line, bet. secs. 31<sup>4</sup> W. 36,  
W. 13° 42' East.

Over rolling land.

39.87 To a point 23 lks. East of old 1/4 sec.  
cor., which is a sandstone, set  
firmly in the ground, marked 1/4  
on W. face, with pits N. <sup>4</sup> W. of  
stone, 5 1/2 ft. dist, and a mound of  
earth, in good order, alongside.  
The return course is therefore S. 20° E.

79.70 To a point 27 lks. East of old cor. to  
secs. 25, 30, 31<sup>4</sup> W. 36, which is a  
marked stone, deposited in the ground,  
with pits in each sec, 5 1/2 ft. dist,  
and a mound of earth in good  
order, and it. In S. E. pit, a stake  
marked T. 17 N., S. 30 on N. E.

R. 23 E., S. 31 and S. E.

R. 21 E., S. 36 on S. W. and

W. boundary T. 17 N., R. 22 E., S. 4th S. R. M.

Chain,

S. 25 on N. W. faces, with 1 notch on S. and 5 notches on N. edges.

The return course is therefore S. 25° E.

Land rolling.

Soil 3<sup>rd</sup> rate.

Vegetation, bunchgrasses.

North on a random line, bet. secs. 25<sup>th</sup> & 30.

Var. 13° 42' East.

One rolling land.

40.34 To a point 27 lks. East of sec 14 sec. cor., which is a marked stake, deposited in the ground, with pits N. <sup>and</sup> S. of cor., 5<sup>1</sup>/<sub>4</sub> ft. dist, and a mound of earth, in good order, over it. In N. pit, a stake, marked 14 S. on W. face.

The return course is therefore S. 25° E.

Cross road, runs N. W. <sup>and</sup> S. E.

80.48 To a point 19 lks. E. of sec cor. to secs. 19, 24, 25<sup>th</sup> & 30, which is a

W. boundary T. 17 N., R. 22 E., S. 19 & 20 R.M.

Chains.

Post, with marked stone, set  
 firmly in the ground, marked  
 T. 17 N., S. 19 or N. E.  
 R. 22 E., S. 30 or S. E.  
 R. 21 E., S. 25 or S. W. and  
 S. 24 or N. W. faces, with 3 notches  
 on S. & 4 notches on N. edges; with  
 pits in each sec, 5<sup>1/4</sup> ft. dist, and  
 a mound of earth, in good order,  
 around post.

The return course is therefore S. 16' E.

Land rolling.

Soil 3<sup>rd</sup> rate.

Vegetation, bunchgrass.

North on a random line, bet. secs. 19-24.

Var. 13° 42' East.

Over rolling land!

40.20

To a point 20 lks. East of old 1/4  
 sec. cor, which is a marked stone,  
 deposited in the ground, with

W. boundary T. 17 N., R. 22 E., S. 1<sup>st</sup> S. R. 11.

Stations

Pits U. <sup>2nd</sup> S. of cor, 5<sup>1/2</sup> ft. dia.,  
and a mound of earth over it.  
In U. pit, a stake, marked "4 S."  
on W. face.

The return course is therefore S. 17° E.

St. 34 To a point 20 lks. East of old  
cor. to sec. 13, 18, 19 <sup>2nd</sup> and 24, which  
is a sandstone, set firmly in  
the ground, marked with 3  
notches on U. <sup>2nd</sup> and S. edges, with  
pits in each sec., and a mound  
of earth, in good order,  
along side.

The return course is therefore S. 17° E.

Land rolling.

Soil 3<sup>rd</sup> rate.

Vegetation, bunchgrass.



W. boundary T. 17 N., R. 22 E., S. W. S. R. M.

## Chains

North on a random line, bet. secs. 13 & 14.  
 Wa.  $13^{\circ} 42'$  East.

Over rolling land.

40.38 To a point 35 lks. East of old  
 14 sec. cor., which is a marked  
 stake, deposited in the ground,  
 with pits N. & S. of cor.,  $5\frac{1}{2}$  ft.  
 dist., and a mound of earth  
 in good order, over it. In N.  
 pit, a stake, marked '14 S.  
 on W. face.

The return course is therefore  $S. 27^{\circ} E.$

80.52 To a point 26 lks. East of old  
 cor. to secs. 7, 12, 13 & 14, which  
 is a marked stake, deposited in  
 the ground, with pits in each  
 sec.,  $5\frac{1}{2}$  ft. dist., and a mound  
 of earth, in good order, over it.  
 In S. E. pit, a stake marked  
 T. 17 N., S. 7 on N. E.  
 R. 22 E., S. 14 on S. E.

W. boundary  $\text{C. } 17 \text{ N. } \text{R. } 22 \text{ E. } \text{E. } \text{Sec. } 1 \text{ R. } 11.$

Locatio.

R. 21 E., S. 13 on S. W. <sup>2nd</sup>

S. 12 on N. W. face, with 4 notches  
on S. <sup>2nd</sup> 2 notches on N. edges.

The return course is therefore S. 22' E.

Land rolling.

Soil 3<sup>rd</sup> rate.

Vegetation, bunchgrass.

North on a random line, bet. secs. 7 <sup>2nd</sup> 12.

Wa.  $13^{\circ} 42'$  East.

On rolling land.

40.39 To a point 20 lks. East of old  $\frac{1}{4}$   
sec. cor, which is a sandstone,  
set firmly in the ground, marked  
 $\frac{1}{4}$  on W. face, with pits N. <sup>2nd</sup> W. of  
stone,  $5 \frac{1}{2}$  ft. dist., and a mound  
of earth, in good order, along side.

The return course is therefore S. 17' E.

80.60 To a point 26 lks. East of old  
cor. to secs. 1, 6, 7 <sup>2nd</sup> 12, which  
is a marked stone, deposited in

W. boundary T. 17 N., R. 22 E., S. 1 S. R. 11

## Chains.

The ground, with pits in each sec.,  $5\frac{1}{2}$  ft. dist, and a mound of earth, in good order, over it.

In S. E. pit, a stake, set firmly in the ground, marked

T. 17 N., S. 6 or N. E.

R. 22 E., S. 7 or S. E.

R. 31 E., S. 12 or S. W. and

S. 1 or N. W. faces, with 5 notches on

S. and 1 notch on N. edges.

The return course is therefore S. 22° E.

Land rolling.

Soil 3<sup>rd</sup> rate.

Vegetation, bunchgrass.

North on a random line, bet. secs. 1 & 6

Wa.  $13^{\circ} 42'$  East.

Over rolling land.

H. 18 Is a point 20 lks. East of sec 14

sec. cor., which is a marked stone,

depressed in the ground, with pit

W. boundary T. 17 N., R. 22 E., G. 2<sup>nd</sup> S. R. M.

Station

N. 2<sup>nd</sup> S. of cor, 5 1/2 ft. dist., and a mound of earth, in good order, over it. In N. pit, a stake, set firmly in the ground, marked 14 S. on W. face.

The return course is therefore S. 20° E.

St. 27 Is a point 27 lks. East of old cor to T. 17 N. 18 N., R. 21<sup>st</sup> 22 E., which is a post, with marked stone, set firmly in the ground, marked T. 18 N., S. 31 on N. E.

R. 22 E., S. 6 on S. E.

T. 17 N., S. 1 on S. W. and

R. 21 E., S. 36 on N. W. face, with 6 notches at each edge; with pits lengthwise on each line, N., S., E. 2<sup>nd</sup> W. of post, 6 ft. dist., and a mound of earth, in good order, around post.

The return course is therefore S. 23° E., land rolling.

W. boundary of 17 N., R. 22 E., T. 9 S. R. 22 W.

Chains

Soil 3<sup>rd</sup> rate.

Vegetation; bunchgrass.

I carefully examined the adjustments of my solar compass today, particularly the latitude and rising apparatus and found them correct.

March 9<sup>th</sup> 1883.

S. boundary T. 13 N., R. 19 E., S. 31 and E. R. M.

## Chains.

Before proceeding with the retracing of this boundary, I made a change of 5 minutes in the latitude arc of my solar compass, by adding same to the reading previously given and at noon, verified and corrected same by observation on the sun. I also further tested instrument by reversing.

From the Standard Cor. to T/ps. 13 N., R. 18<sup>th</sup> 19 E., which is a post, with marked stake, set firmly in the ground, marked S. E. T. 13 N. on N.

R. 19 E., S. 31 on E. and

R. 18 E., S. 36 on W. faces, with 6 notches on N., E. & W. faces; with pits N., E. & W. of post, 6 ft. dist, and a mound of earth, in general, around post. Run

East on a random line, on S. boundary sec. 31.

06 Rebraeing 8<sup>th</sup> Standard line N.,  
along  
S. boundary T. 13 N., R. 19 E., S. 31 & 32 R.M.

BOOK 1401

Chain

Wa.  $14^{\circ}15'$  East

On level Mesa.

40.27 To a point 32 lks. South of old  
Standard 14 sec. cor, which is a  
+ post with marked stone set  
firmly in the ground, marked  
S. E. 1/4 S. on N. face, with pits and  
earth mound, in bad condition, 2  
redig pits, making them  $18 \times 18 \times 12$  ins.  
E.  $\frac{3}{4}$  W. of post 5  $\frac{1}{2}$  ft. dist, and  
mound mound, to be 1  $\frac{1}{2}$  ft. high,  
3  $\frac{1}{2}$  ft. base, around post.

The return course is therefore  $S 89^{\circ}33' W$

80.12 To a point 19 lks. South of old  
Standard cor. to secs. 31<sup>st</sup> and 32,  
which is a post, with marked  
stone, set firmly in the ground,  
marked S. E. T. 13 N., R. 19 E. on N.  
S. 32 on E. and S. 31 on W. faces,  
with 1 notch on W.  $\frac{3}{4}$  and 5 notches  
on E. edges; with pits N., E.  $\frac{3}{4}$  and W.

Retracing 3<sup>rd</sup> Standard line N,  
along  
S. boundary T. 13 N., R. 19 E., E. 1/4 S. R. M.

Skans

of post, 5 1/2 ft. dist, and a mound  
of earth, in good order, around  
post; From which pass:

a Pine, 12 in. dia., N. 7° E., 26 lks. dist,  
marked T. 13 N., R. 19 E., S. 32 B. 7.

a Juniper, 8 in. dia., S. 24° E., 54 lks. dist,  
marked T. 12 N., R. 19 E., S. 5 B. 7.

No other trees within limits.

The return course is therefore S. 89 1/2° W.

Land level.

Soil 3<sup>rd</sup> rate.

Timber of Pine and Juniper.

Vegetation bunchgrass



Retracing 3<sup>rd</sup> Standard line to  
along  
S. boundary T. 13 N., R. 19 E., G. & S. R. M.

BOOK 1401

Chains.

East on a random line, on S. boundary sec. 32,  
Ta.  $13^{\circ}45'$  East.

Descend gradually.

40.15 To a point 22 lks. S. of old  
Standard '4 sec. cor., which is a  
post, with marked stone, set  
firmly in the ground, marked  
S. E. '4 C. on N. face, with pits <sup>and</sup>  
an earth mound, in poor condition,  
around post. I redig pits, making  
them  $18 \times 18 \times 12$  ins. E. & W. of post,  
 $5\frac{1}{2}$  ft. dist, and rebuild mound,  
making it  $1\frac{1}{2}$  ft. high,  $3\frac{1}{2}$  ft. base  
around post; from which bear:  
to Juniper, 5 ins. dia, S.  $80^{\circ}$  E., 67 lks. dist,  
marked S. E. '4 C. B. 7.

No other trees within limits.

The return course is therefore S.  $89^{\circ}41'$  W.

80.41 To a point 25 lks. South of old  
Standard cor. to secs. 32 <sup>and</sup> 33,  
which is a post, with marked stone

S. boundary T. 13 N., R. 19 E., E. <sup>1/4</sup> S. R. M.

Observations

set firmly in the ground, marked  
S. E. T. 13 N., R. 19 E. on N.

S. 33 on E. <sup>1/4</sup> and S. 32 on W. faces, with  
4 notches on E. <sup>1/4</sup> and 2 notches on W  
faces; with pits N. E. <sup>1/4</sup> and W. of post,  
5<sup>1/2</sup> ft. dist., and a mound of  
earth in good order, around  
post; from which bears:

A Jumper, 6 ins. dia., N. 80° E., 116 lbs. dist,  
marked T. 13 N., R. 19 E., S. 33 B. T.

A Jumper, 4 ins. dia., N. 38° W., 39 lbs. dist,  
marked T. 13 N., R. 19 E., S. 32 B. T.

A Pine, 6 ins. dia., S. 14° W., 45 lbs. dist,  
marked T. 12 N., R. 19 E., S. 5 B. T.

Land rolling

Soil 3<sup>rd</sup> rate.

Timber, Pine and Jumper.

Vegetation, bunchgrass.

4.0 Retracing 3<sup>rd</sup> Standard line N,  
along  
S. boundary 13 N., R. 19 E., G. and S. R. M.

BOOK 1401

Chains.

East on a random line, on S. boundary sec. 33.  
Ta.  $13^{\circ}45'$  East.

Descend.

30. 24 Cross Wash, 20 lks. wide, course  
 $N. 60^{\circ} E.$  and over level valley.

40. 32 To a point 14 lks. South of old  
Standard 14 sec. cor, which is a  
post, lying on the ground, the pits  
and earth mound being in poor  
condition. To rebuild cor, I reset  
post, which is 3 ft. long, 3 ins. sq. s  
with marked stone, 12 ins. in the  
ground, marked S. E.  $1/4$  S. on N. face,  
dig pits  $15 \times 15 \times 12$  ins. E. and W. of  
post  $5 \frac{1}{2}$  ft. dist, and build a mound  
of earth,  $1 \frac{1}{2}$  ft. high,  $3 \frac{1}{2}$  ft. base,  
around post.

The return course is therefore  $S. 89^{\circ}48' W.$

77. 13 Cross Wash, 25 lks. wide, course  
 $S. 80^{\circ} E.$  and ascend.

80. 34 To a point 26 lks. South of old

S. boundary T. 13 N., R. 19 E., E. &amp; S. R. M. W.

## Chain

Standard cor. to secs. 33<sup>rd</sup> and 34,  
which is a post, with marked  
stone, set firmly in the ground, marked  
S. E. T. 13 N., R. 19 E. on N.

S. 34 on E.  $\frac{1}{2}$  of S. 33 on W. faces, with  
3 notches on E.  $\frac{1}{2}$  W. faces; with  
pits, N., E.  $\frac{1}{2}$  W. of post, 5 $\frac{1}{4}$  ft. dist,  
and a mound of earth around post.

The pits  $\frac{1}{2}$  mound, being in poor  
condition, 3 redig pits, making  
them 18 x 18 x 12 ins., and rebuilt  
mound, making it 2 ft. high, 4 $\frac{1}{2}$  ft. diam.

The return course is therefore S. 89° 38' W.

Land level and rolling.

Soil 3<sup>rd</sup> rate.

Vegetation, bunchgrass

S. boundary T. 13 N., R. 19 E., G. & S. R. M.

Chains

East on a random line, on S. boundary see 34.  
Wa. 13° 30' East.

Ascend.

40.33

To a point 38 lks. South of old Standard 14 sec. cor, which is a post, with marked stone, set firmly in the ground, marked S. E. 14 S on N. face, with pits 18 x 11 x 12 ins.

E. <sup>9</sup>/<sub>16</sub> W. of post, 5 1/2 ft. dist, and a mound of earth, in good order, around post; from which bear:

A Juniper, 4 ins. dia, 4.36° E, 68 lks. dist, marked S. E. 14 S. B. 1

a Juniper, 3 ins. dia, S. 69° W, 71 lks. dist, marked S. E. 14 S. B. 2

The return course is therefore S. 89° 27' W,

75.00

Top of spur, bear N. 30° W. <sup>9</sup>/<sub>16</sub> S. 30° E. <sup>2</sup>/<sub>3</sub> descend,

80.45

To a point 29 lks. South of old Standard cor. to secs. 34 and 35, which is a post, set firmly in the ground, marked

Retracing 3<sup>rd</sup> Standard line N., 43  
along

S. boundary T. 13 N., R. 19 E., E.  $\frac{1}{4}$  S. R. M.

Claims

A. C. T. 13 N., R. 19 E. on N.

S. 35 on E.  $\frac{1}{4}$  S. 34 on W. faces,  
with 4 notches on W. and 2 notches  
on E. edges, with pits N., E. and W.  
of post, 5 $\frac{1}{2}$  ft. dist., and a mound  
of earth, in good order, around  
post; from which bear

A jumper, 6 ins. dia, S. 5° E., 43 lks. dist,  
marked T. 12 N., R. 19 E., S. 2 B. T.

No other trees within limits.  
The return course is then for S. 89° 35' W.  
Land mountainous.

Soil 3<sup>rd</sup> rate.

Timber of Jumper.

Vegetation bunchgrass.

East on a random line, on S. boundary sec 35.

Var. 13° 20' East.

Descend.

30.00 Cross Wash, 10 lks wide, course

S. 20° E. and ascend.

40.16 To a point 3 $\frac{1}{2}$  lks. South of old

4 Retracing 3<sup>rd</sup> Standard Line N,  
BOOK 1401 along  
boundary T. 13 N., R. 19 E., S. 1/4 S. R. W

chain

Standard 14 sec. cor, which is a  
post, with marked stone, set firmly  
in the ground, marked S. E. 1/4 S.  
on N. face, with pits E. and W.  
of post, and a mound of earth,  
in good order, around post;

From which traverse:

a Jumper, 6 vis. dist, N. 8° W., 52 lks. dist,  
marked S. E. 1/4 S. R. W.

A Pine, 6 vis. dist, S. 20° E., 41 lks. dist,  
marked S. E. 1/4 S. R. W.

The return course is therefore S. 89° 33' W.

55.00 Top of Ridge, traverse N. 60° W. and  
S. 60° E. and descend!

50.40 To a point 39 lks. South of old  
Standard cor. to secs. 35<sup>and</sup> 36,  
which is a post, lying on the  
ground, with pits and earth mound  
in poor condition. To reestablish  
cor., I reset post, which is 4 ft.  
long, 4 vis. square, with marked  
stone, 12 vis. in the ground, marked

Retracing 3<sup>rd</sup> Standard line N., 45  
along

S. boundary T. 13 N., R. 19 E., S. 1/4 S. R. 21

Notes

S. E. T. 13 N., R. 19 E. on N.

S. 36 on E. W. S. 35 on W. faces, with  
1 notch on E. W. 5 notches on W.

faces, ridge pits, 10 x 18 x 12 ins., N., E. & W.  
of post, 5 1/2 ft. dist., and rebuilt  
mound of earth, 2 ft. high, 4 1/2 ft.  
base, around post; from which bears:

A Juniper, 5 ins. dia., N. 44° E., 90 lbs. dist.,  
marked T. 13 N., R. 19 E., S. 1/4 R. 21

A Pine, 6 ins. dia., S. 49° E., 23 lbs. dist.,  
marked T. 12 N., R. 19 E., S. 1 R. 21

No other trees within limits.

The return course is therefore S. 89° 27' W.

Land mountains.

Soil 3<sup>rd</sup> rate.

Timber, Pine and Juniper.

Vegetation, bunchgrass.



4 Re H6 Retracing 3<sup>rd</sup> Standard line 2,  
BOO BOOK 1401 along  
bound. S. boundary C. 13 N., R. 19 E., G. March 1

chain's - chains,

East on a random line, on S. boundary sec 36  
Yd. 13°00' East.

Descend,

18.00 Cross Wash, 11 lks. wide, course  
N. 10° W. and ascend.

40.58 To a point 40 lks. South of sec  
Standard 1/4 sec. cor, which is a  
post, lying on the ground with  
pits filled up <sup>4</sup>/<sub>16</sub> earth mound  
nearly destroyed. I reset post,  
which is 3 ft. long, 3 ins. square,  
with marked stone, 12 ins. in the  
ground, marked S. E. 1/4 S. on N.  
face, redig pits 18 x 18 x 12 ins.,  
E. <sup>4</sup>/<sub>16</sub> W. of post, 5 1/2 ft. dist,  
and raised mound, 1 1/2 ft  
high, 3 1/2 ft. base, around post;  
from which bear:

5.33

0.40

A jumper, 8 ins dia, S. 6° W., 23 lks. dist,  
marked S. E. 1/4 S. B. C.

No other trees within limits.  
The return course is therefore S. 89° 26' W.

Retracing Standard line N., along BOOK 1401  
boundary T. 13 N., R. 19 E., G. and S. R. M. M.

70 Top of Spur, bears N.  $20^{\circ}$  W. and  
S.  $20^{\circ}$  E. and descend.

76 To a point 29 chs. South of old  
Standard cor. to Tps. 13 N.,

R. 19<sup>th</sup> and 20 E., previously described.

The return course is therefore S.  $89^{\circ}$   $35'$  W.

Land mountains.

Sail 3<sup>rd</sup> rate.

Heavy timber of Pine and Juniper.

Vegetation, bunchgrass.

April 5<sup>th</sup> 1883.

BK 1400  
BK 3497

1A 277 51

ARIZONA PUBLIC SERVICE COMPANY

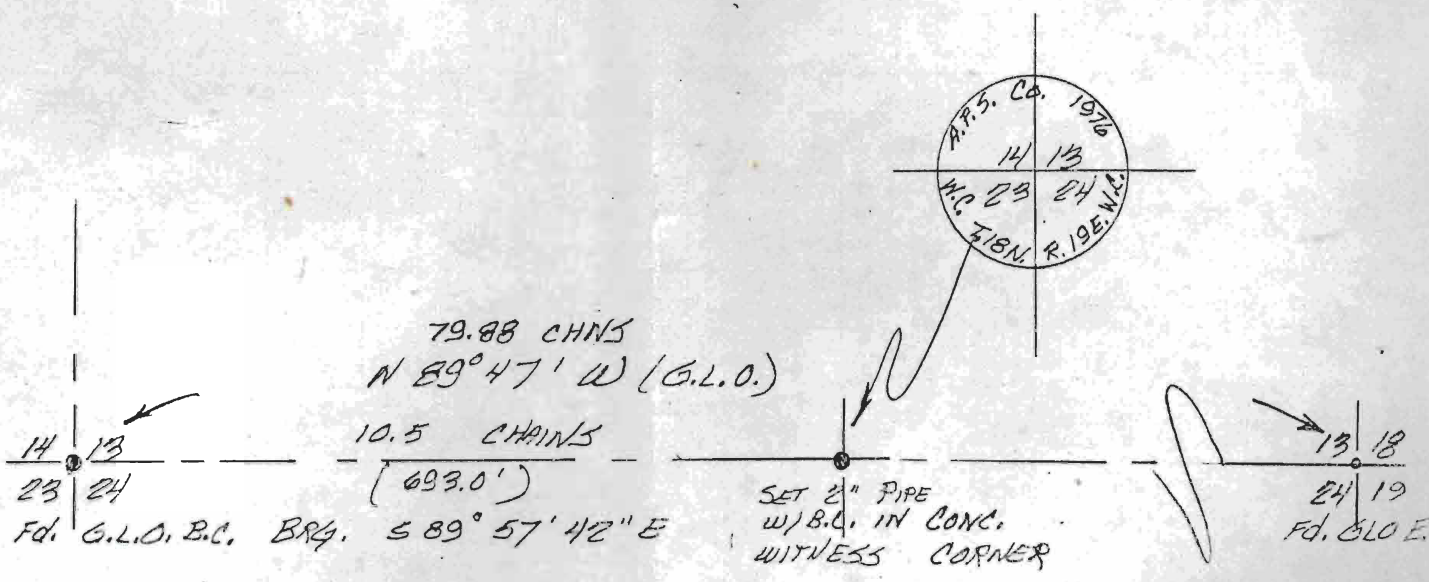
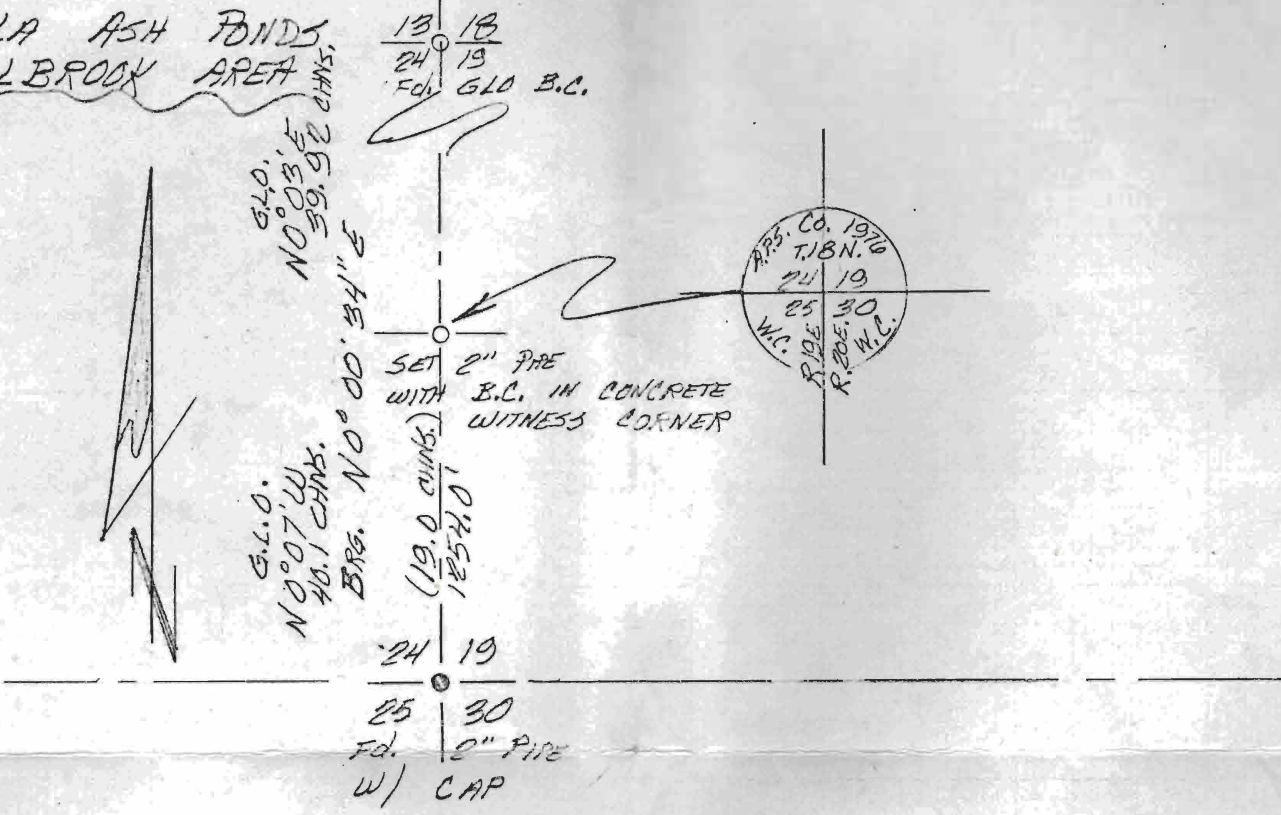
FORM 605-00A

SURVEY NOTES

P.E. \_\_\_\_\_  
W.A. 11-3101 40%  
11-2101 60%  
DATE: 7<sup>th</sup> JUN 1976

SEC. \_\_\_\_\_ T. 18 N. R. 20 E.  
CREW: SHOOT - BRADEN

CHOLLA ASH FONDS  
HOLBROOK AREA



48 Retracing 3<sup>rd</sup> Standard line N,  
BOOK 1401 along  
S. boundary T. 13 N., R. 18 E., S. 1/4 S. R. M.

Chavis

From the Standard cor. to Tps  
13 N., R. 18<sup>th</sup> W. 19 E., previously described,  
from  
West on a random line, on S. boundary sec. 36,  
Va.  $14^{\circ} 15'$  East.

Ascend.

15.00 Top of Ridge, bears N.  $27^{\circ}$  E. and  
S.  $27^{\circ}$  W. <sup>then</sup> descend.

40.34 To a point 40 lks. North of old  
Standard '14 sec. cor., which is a  
post, with 7 marked stones, set  
firmly in the ground, marked  
S. E. '14 S. on N. face, with pits  
E. and W. of post, 5<sup>th</sup> ft. dist, and  
a mound of earth, in good  
order around the post.

The return course is therefore N.  $89^{\circ} 26'$  E.

53.20 Cross Wash, 16 lks. wide, course  
N.  $30^{\circ}$  E. and ascend.

70.00 Top of spur, bears N. E. and S. W. <sup>then</sup> descend.

80.32 To a point 37 lks. North of old  
Standard cor. to secs. 35 and 36,

Retracing 3<sup>rd</sup> Standard line U., 47

S. boundary T. 13 N., R. 18 E., E.  $\frac{1}{2}$  S. R. 20

### Claims

which is a post, with marked staves,  
set firmly in the ground, marked  
S. E. T. 13 N., R. 18 E. on U.

S. 36 on E.  $\frac{1}{2}$  S. / S. 35 on W. faces, with  
1 notch on E.  $\frac{1}{2}$  S. & notches on W. faces,  
with pits  $\frac{1}{2}$  in earth mound, in poor  
condition. Finding pits 18 x 18 x 12 ins.

N., E.  $\frac{1}{2}$  S. W. of post, 5 $\frac{1}{2}$  ft. dist., and  
round earth mound 2 ft. high,

4 $\frac{1}{2}$  ft. base around post; from which bears:

a Juniper, 6 ins. dia., N. 40° E., 86 lks. dist.,  
marked T. 13 N., R. 18 E., S. 36 B. C.

a Pine, 12 ins. dia., N. 33° W., 144 lks. dist.,  
marked T. 13 N., R. 18 E., S. 35 B. C.

a Pine, 8 ins. dia., S. 6° W., 57 lks. dist.,  
marked T. 12 N., R. 18 E., S. 2 B. C.

The return course is therefore N. 89° 28' E.

Land selling.

Soil 3<sup>rd</sup> rate.

Heavy timber of Pine  $\frac{1}{2}$  Juniper.

Vegetation, bunchgrasses.

50 Retracing 3<sup>rd</sup> Standard line N,  
along  
S. boundary C. 13 N., R. 18 E., G. and S. R. W.

Shamis

West on a random line, on S. boundary sec. 35.  
Ya.  $13^{\circ}45'$  East.

Descend.

27.63 Cross Wash, 20 lks. wide, course  
N.  $30^{\circ}$  E. and ascend.

40.38 To a point 25 lks. North of old  
Standard 14 sec. cor, which is a  
post, with marked stone, set firmly  
in the ground, marked S. E.  $1/4$  S. R. W. on  
N. face, with pits E. and W. of post,  
 $5\frac{1}{2}$  ft. dist., and a mound of earth  
in good order, around post;

From which run:

A jumper, 12 ins. dia., S.  $17^{\circ}$  E., 17 lks. dist.,  
marked S. E.  $1/4$  S. R. W.

No other tree within limits.

The return course is therefore N.  $89^{\circ}39'$  E.

80.66 To a point 41 lks. North of old  
Standard cor. to secs. 34 and 35,  
which is a post, with marked stone,  
set firmly in the ground, marked

Retracing 5<sup>th</sup> Standard dem. U.,  
along

BOOK 1401

S. boundary T. 13 N., R. 18 E., S. 34 & S. R. M.

Chain's

S. E. T. 13 N., R. 18 E. on U.  
S. 35 on E. <sup>2nd</sup> and S. 34 on W. faces,  
with 2 notches on E. <sup>2nd</sup> and 4 notches  
on W. faces, with pits U., E. <sup>2nd</sup> and W.  
of post, 5<sup>th</sup> ft. dist., and a mound  
of earth, in good order, around post.  
The return course is therefore N. 89° 25' E.

Land rolling

Soil 3<sup>rd</sup> rate.

Timber of Juniper.

Vegetation, bunchgrass.

West on a random line, on S. boundary Sec. 34,

Ca. 13° 50' East.

Ascend.

30.00 Top of Ridge, bear U. 10° E. <sup>2nd</sup> and S. 10° W.,  
and descend.

40.27 To old Standard 1<sup>st</sup> sec. cor., which is  
a post, lying on the ground, with  
pits <sup>2nd</sup> and mound in bad condition.  
I reset post, which is 3 ft. long, 3 in.

52 Retracing 3<sup>rd</sup> Standard line N,  
S. boundary T. 13 N., R. 18 E., G. and S. R. M.  
along

BOOK 1401

Chain.

square, with marked stone, 12 ins. in  
the ground, marked S. C. 14 S. on N.  
face, indig pits 18 x 18 x 12 ins. E. and W  
of post, 5 1/2 ft. dist, and summit  
mound, 1 1/2 ft. high, 3 1/2 ft. base,  
around post.

42.20 Cross Wash, 11 lks. wide, course  
N. 20 E. and ascend.

66.00 Top of Spur, bears N. and S. and descends.

80.55 To a point 52 lks. North of old  
Standard cor. to secs. 33 and 34,  
which is a post, with marked stone,  
set firmly in the ground, marked  
S. C. T. 13 N., R. 18 E., on N.  
S. 34 on E. and S. 33 on W. faces, with 3  
notches on E. and W. faces, with pits  
N., E. and W. of post, 5 1/2 ft. dist, and mound  
peasants, in good order, around post.  
The return course is therefore N. 89° 15' E.  
Land rolling. Soil 4<sup>th</sup> rate.  
Vegetation, bunch grass.



S. boundary T. 13 N., R. 18 E., S. 2<sup>nd</sup> S. R. M.

## Chains

West on a random line, on S. boundary sec. 33.

Wa.  $13^{\circ}40'$  East.

Descend.

4.10 Cross Wash, 16 lks. wide, course

N. E.  $40'$  ascend.17.50 Top of spur, cross N.  $20^{\circ}$  E. andS.  $20^{\circ}$  W. and descend.

34.30 Cross Wash, 17 lks. wide, course

N.  $50^{\circ}$  E.  $40'$  ascend.

40.45 To a point 39 lks. North of old

Standard 14 sec. cor., which is a  
spot, with marked stone, set firmly  
in the ground, marked S. E. 14 S. onN. face, with pits E.  $40'$  W. of post,  
 $5\frac{1}{2}$  ft. dist., and a mound of earth,  
in good order, around post;

From which cross:

a Pin, 8 ins. dia., N.  $79^{\circ}$  W., 63 lks. dist,  
marked S. E. 14 S. B. J.a Pin, 7 ins. dia., S.  $71^{\circ}$  E., 28 lks. dist,  
marked S. E. 14 S. B. J.

54 Retracing  $\frac{1}{2}$  m Standard line N,  
BOOK 1401 along  
S. boundary S. 13 N., R. 18 E., G. & S. R. W.

Chavis

The return course is therefore  $N. 89^{\circ} 27' E.$

60.50 Top of Ridge, bears N. W.  $\frac{2}{3}$  S. E.  $\frac{2}{3}$  and descend.

80.63 To a point 30 lks. North of old  
Standard cor. to secs. 32 and 33,  
which is a post, greatly decayed,  
the marks nearly obliterated and  
the pits and earth mound destroyed.

I destroy all traces of old cor., and  
set a post, 4 ft. long, 4 ins. square,  
with marked stake, 12 ins. in the  
ground, marked

A. C. S. 13 N., R. 18 E. or N.

S. 33 or E. and

S. 32 on W. faces, with 4 notches on E.

and 2 notches on W. faces; dug pits

$18 \times 18 \times 12$  ins. N., E. and W. of post, 5 ft.

dist., and raised a mound of  
earth, 2 ft. high, 4 ft. base

around post; from which bears:

A jumper, 7 ins. dia,  $N. 63^{\circ} E.$ , 55 lks. dist,  
marked S. 13 N., R. 18 E., S. 33 B. J.

S. boundary T. 13 N., R. 18 E., G. 4<sup>th</sup> S. R. M.

Sloans

A Pine, 6 ins. dia., N. 6° W., 26 lks. dist,  
marked T. 13 N., R. 18 E., S. 32 B. 7.

A Juniper, 3 ins. dia., S. 34° W., 16 lks. dist,  
marked T. 13 N., R. 18 E., S. 5 B. 7.

The return course is therefore N. 89° 33' E.

Land mountainous.

Soil 3<sup>rd</sup> rate.

Heavy timber Pine and Juniper.  
Vegetation, bunchgrass.

West on a random line, on S. boundary sec. 32,  
Va. 13° 45' East.

Descend.

17.18 Cross Creek, 36 lks. wide, course  
N. 17° E. and ascend.

40.28 To a point 50 lks. North of old  
Standard 1/4 sec. cor., which is a  
post, with marked stone, set  
firmly in the ground, marked  
S. 6. 1/4 S. on N. face, with pits  
E. and W. of post, 5 1/2 ft. dist, and

56 Retracing 3<sup>rd</sup> Standard Line N,  
along  
S. boundary S. 13 N., R. 18 E., E. <sup>4th</sup> S. R. M.

BOOK 1401

Chassis

a mound of earth, in good order,  
around post; from which bears:  
a jumper, S. 12° W., 65 lks. dist,  
marked S. E.  $\frac{1}{4}$  S. R. 17

a Pine, 7 mis. dia., S. 62° W., 30 lks. dist,  
marked S. E.  $\frac{1}{4}$  S. R. 17

The return course is therefore N. 89° 17' E.

60.00 Top of Spur, bear N. 30° W. <sup>4th</sup> S. 30° E.  
and descend.

71.10 Cross Wash, 15 lks. wide, course  
S. 27° E. and ascend.

80.47 To a point 43 lks. North of old  
Standard cor to secs 31<sup>st</sup> and 32, which  
is a post, with marked stone, set  
firmly in the ground, marked  
S. E. S. 13 N., R. 18 E. and N.

S. 32 and E. <sup>4th</sup>

S. 31 on W. faces, with 5 notches on E.  
and 1 notch on W. faces, with pits,  
N. E. <sup>4th</sup> W. of post, 5 1/2 ft. dist, and  
a mound of earth, in good order,

Retracing 3<sup>rd</sup> Standard Line N. 101 57

S boundary T. 13 N., R. 18 E., S. 32 B. V.

Glauis

around post; from which are:  
A Pine, 8 ins. dia., N. 71° E., 90 lks. dist,  
marked T. 13 N., R. 18 E., S. 32 B. V.  
A Pine, 18 ins. dia., S. 73° W., 62 lks. dist,  
marked T. 12 N., R. 18 E., S. 6 B. V.  
No other trees within limits.

The return course is therefore N. 89° 23' E.

Land mountains.

Soil 3<sup>rd</sup> rate.

Heavy timber of Pine and Juniper.

Vegetation, bunchgrass.

West on a random line, on S. boundary sec. 31.

Var. 13° 40' East.

Ascend.

40.40 To a point 8 lks. North of old  
Standard 14 sec. cor., which is a  
sandstone, set firmly in the ground,  
marked 14 on N. face, with a stone  
mound along side.

The return course is therefore N. 89° 53' E.

Retracing Standard line N.,  
S. boundary T. 13 N., R. 18 E., G. and S. R. M.

Claims

57.26 Top of Ridge, bears  $N. 40^{\circ} E.$  and  
 $S. 40^{\circ} W.$  and descends.

80.77 To a point 18 lks. North of our  
Standard cor to Tps. 13 N., R.  
17<sup>th</sup> W 18 E, which is a sandstone,  
set firmly in the ground, marked with  
6 notches on N., E. and W. edges, with  
pits, N., E. and W. of stone, 6 ft. dist.,  
and a mound of earth, in good  
order, alongside.

The return course is therefore  $N. 89^{\circ} 45' E.$   
Land mountains.

Soil 3<sup>rd</sup> rate.

Vegetation, bunchgrass.

I carefully examined the adjustments  
of my solar compass today,  
particularly the latitude and  
meridian apparatus and found  
them correct.

April 6<sup>th</sup> 1883.

For final notes  
see book 14.

U. S. Surveyor General's Office,

Tucson, Arizona, July 31, 1883.

The foregoing Field Notes of the Survey of the  
Retracing of a portion of the  
Eastern Lines of Tps. 12, 13 & 17 North  
Ranges 18, 19, 22, 25 & 27 East

Of the Gila and Salt River Base and Meridian, Arizona, execu-  
ted by W. A. Coe,

Deputy Surveyor, under his contract of the 25<sup>th</sup>  
day of July, 1882, having been

critically examined and the necessary corrections and explana-  
tions made, the said Field Notes and the surveys they describe  
are hereby approved

W. P. Ross  
Surveyor General.