

Book "C"

17

BOOK 1425

Boundaries T. 19 N. R. 4 E

1425

1425

Andrew Barry U.S.D.S.
Nov. 1902

4-671

BOOK 1425

FIELD NOTES
GENERAL LAND OFFICE.

No. 1425

*

Rec'd July 28-1903.

Descriptive sheets copied E.V.

Compared Descriptive notes V + A. 1/2/04

Notes Copied C.M. 7/1/04

" Compared C.F. M. M.G. 2/1/04

Accts checked
C.M. T. 2/10/04

Dalcho Copied A.M.
" Compared M.S.E.M. 7/1/04

S.E. W. Dalcho copied 1/2/04

Field notes
of the Survey of the
Boundaries
of
Township No 19 North
Range No. 4 East
of the
Gila and Salt River
Base and Meridian
in the
Territory of Arizona
as surveyed by
Andrew Barry
under his contract No 99
dated June 30th 1902

Survey commenced October 30, 1902
Survey completed November 10, 1902

Names and duties of Assistants

Fred C. Roberts chairman

Charles Fitzgerald chairman

George W. Campbell Asswan

Frank J. Feuton, Flagman

(For preliminary cash see P. Bdy.
of T. 19 N. R. 5 E.)

BOOK 1425

	31	32	33	34	35	36	
			52	54	56	58	
1	6	5	4	3	2	1	38 6
12	4 7						12 41 7
13	6 18	T 19 N R 4 E				13	43 18
24	7 19						24 45 19
25	9 30						25 47 30
36	12 31	32	33	34	35	36	50 31
	21	24	27	29	31	33	
	6	5	4	3	2	1	

West Boundary of $\sqrt{19}$ N. R. 4 E.

Survey commenced
October 30th 1902

I establish a meridian
and adjust my transit
on October 28, and 29,
Notes of which are in
the book containing the
S. ldy. of T19N-R, 5 E.
filed herewith.

October 30. at 8^h 30^m a.m. P.M.C.
Set off $35^{\circ} 05'$ N. in the lat. arc: $13:35$ on
on the decl. arc and determine
a true meridian with the
Solar

West Boundary of

Should have started from
14 cu. 18 88 N. W. P.
being subject to rectification

From the witness
point bet. Secs. 7 and 12
on the W. bdy. of the T₆,
which is a stake in mound
of stone on the rim of
Lee Canon. I consider
a flag previously set
at the $\frac{1}{4}$ sec. cor. bet. Secs.
13. and 18. which flag
bears $S 8^{\circ} 05' N$.

See Amended survey
Book 10 "for this line.

I therefore run
 $S. 8^{\circ} 05' N$. from W. point
bet. Secs. 7 and 12.

ascend very abruptly
over mountainous land
through dense undergrowth

21. 12

From witness point
I set a Sandstone $24 \times 16 \times 5$ ins.
6 ins in the ground to bedrock
surrounded by mound of stone

19 N. R. 4 E.

3 ft. base 7 ft. high for
 cor. of Secs 7-12-13 and 18
 marked with 3 notches on
 N and S. edges

from which
 a Pine 6 ins in diam.

bears S. 10° E. 10 chs. dist.
 marked T 19 N-R, 4 E, S. 18-B, T.

a Pine 14 ins in diam.
 bears N 28° W. 50 chs. dist.

marked T 19 N, R 3 E, S. 12 B, T.

no other trees available
 scale mound of stone $2\frac{1}{2}$ ft. base $1\frac{1}{2}$ ft. high W
 of cor. - Pits unpracticable

Land mountainous

oil at the rate

Timber Pine. Sattering
 mountainous land and
 land covered with dense
 undergrowth 21-12 chs.

West Boundary of

- S. 8° 05' W. bet Secs. 13 and 18
over mountainous land
through dense undergrowth
Descend
9. 30 Bottom of "See Cañon"
800 ft deep course S. E
11. 00 Ascend
- 3820 Top of rim of See Cañon
Leave S. E. and N. W.
41. 11 The 1/4 Sec. cor. which is a
stone 6 x 12 x 10 ins. above ground
marked and witnessed as described
by the Surveyor General
Land Mountainous
@ 10¢ ^{per} acre
Timber Pine and Oak
mountainous land and
land covered with dense
undergrowth 41. 11 chs.
October 30^h 1902

This line should have been
as a boundary for distance and
defining corners of the
See Amended Survey Book
"10" for this line

J 19 N R 4 E

October 31. at 7:00 am cont. Set off $35^{\circ} 4'$ north
 lat. $22^{\circ} 13' 45''$ S. on the decl. arc, and determine
 and meridian with the solar
 at the cor. of Sec.

13 - 18 - 19 and 24

on the N. side of the Sp.
 which is a stone $6 \times 12 \times 10$ ins above ground
 marked and witnessed as described by the
 Surveyor General. Thence I run
 South bet Secs. 19 and 24

Over Mountainsous land
 through dense undergrowth

1.00 Descend

21.50 Bottom of Canon 600 ft. deep
 course S. E.

Ascend

40.00 Set a Silestone $16 \times 12 \times 6$ ins, 11 ins,
 in the ground for $1/4$ Sec. cor.
 marked $1/4$ on W face

From which

A Pine 10 ins. in diam.
 bears S. 65° E. 90 yds. dist.

Marked $1/4$ S. 19 - B.T.

No other tree available

rais mound of stone 3 ft.

See amended
 survey book 10 for
 this line.

8

BOOK 1425

West Boundary of

base 2 ft. high W of cor.
Pits impracticable

48-50 Ridges bears E and N,
descend abruptly

80,00 set a Finestone 20x12x8 in.
6 in to bed rock, surrounded
by mound of stone 2 1/2 ft base 1 ft
high, for cor of Sec. 19-24-25 and 30
marked with 4 notches on N. and
2 notches on S edges

From which

a. Pine 6 in. in diam.

bears S. 65° E, 35 cks. dist.

marked T 19 N. R. 4 E. S 30 B.T.

No other tree available

raise mound of stone 2 1/2 ft
base 1 1/2 ft high N. of cor,
Pits impracticable

Y 19 N. R. 4 E.

Sand Mountains

② out of th. rate

Timber Scattering Oaks & Cedar
 Mountains land and land
 covered with dense under-
 growth of oak and cedar
 8000 lbs

*

South. bet Secs 25 and 30.

Over mountainous land
 through dense undergrowth

Descend ^{see} steep cañon trail

22.00 Bottom of ^{see} Cañon 1000 ft. deep
 course E.

Ascend

40.00 Set a Sand Stone 16x10x6 ins.

11 ins in the ground for 1/4 Sec.

cor. marked 1/4 on W face

and raise a mound of stone

See Amended
 Survey Book "B"
 for this line.

10

West Boundary of

- 3 ft bar 2 ft high W. of cor.
Pits impracticable
- 45-00 Top of Butte.
Descend
- 58-50 Bottom of canon 1,000 ft deep
course S. E.
ascend
- 60-00 Top. ~~to~~
descend
- 62-00 ascend
- 80-00 Set a S and stone 20x12x8 ins.
15 ins. in the ground for cor. of
Secs 25-30-31, and 36
marked with 5 notches on N.
and 1 notch on S edges
from which
a cedar 6 ins in diam.
bears N. 36° N. 33 lvs. dist.
marked T 19 N R 3 E S. 25 B. T.
no other trees available

Y 19 N. R. 4 E.

rais mound of stone 3 ft. base
2 ft high N. of cor.

Pits impracticable

Land mountainous
Soil & rate

~~South lot Secs. 31 and 36
over mountainous land
through dense -~~

Timber Scattering Pine & Cedar
mountainous land and
land covered with dense under-
growth of oak and cedar

80.00 chs.

October 31st 1902

West Bowditch of ^{November 17, 1905} ~~at 7:30 a.m. l. m. s. set off~~ ^{35° 2' N. on}
 the lat. arc, ^{lat. 19° S. on the} ~~dec. arc and determine a true meridian~~
 with the ^{of the} ~~split~~ ^{and run}

South bet. Sec 31 and 36.

over mountainous land
 through dense undergrowth
 descend

22.00 Gulch 30 ft. wide course S. E
 ascend

40.00 Set a Sandstone 16x12x6 ins. 11
 ins in the ground for 1/4 Sec.
 cor. marked 1/4 on W face
 and raise mound of stone
 2 1/2 ft base, 1 1/2 ft high N. of
 cor. Pits unpracticed to

See Amended "D"
 survey book "D"
 for this mile.

52.90 High ridge bears S. E. and N. W.
 descend

76.30 Gulch 20 ft. wide course S. E.
 ascend

80.00 Set a Sand stone 24x12x10 ins.
 6 ins in the ground to bedrock
 surrounded by mound of stone
 3 ft base 1 1/2 ft. high

T 19 N. R. 4 E.

for cor. of Tps. 18 and 19 N.
Rs. 3 and 4 E.

marked with 6 notches
on each edge.

from which

a Pile 4 ins. in diam.

bear N 67° E. 111 lks. dist.

marked T 19 N - R 4 E S. 31 - B. T.

a Pile 12 ins in diam.

bear N 76½° W. 44 lks. dist

marked T 19 N - R 3 E. S. 36 B. T.

no other trees available.
I raise mound of stone 3 ft base 2 ft high S.

of cor. - - Pits impracticable

Land mountainous

2 oil 3 E rats

Timber Scattering Pine and Cedar

mountainous land and land

covered with dense undergrowth

of Monarda esp. and cedar

8 000 chs.

November 1, 1902

20

BOOK 1425

West Boundary of
J. 19 N. R. 4 E.

pages 14 thru 20 are blank

South Bdy. T 19 N. R 4 E

November 1. - 1902
 at the cor of Sp 18th Sec
 19 N. Rs. 3 and 4 E.
 which I established

November 1, 1902 - at 1^h P.M.
 I set off $35^{\circ}01'N$ on the
 lat. arc: $14^{\circ}19'S$ on the
 decl. arc. and determine
 a true meridian with
 the solar and run
 thence

East on a true line
 along the S. Bdy. of T 19 N
 R. 4 E. but bears 6 and 31.
 Over mountainous land
 through heavy timber
 descend

2.25 Gulch 10 Sec. wide course S.
 ascend

7.10 Ridge bears S. E. and N.W.

South Boundary of

Descend

13-30 Gulch 15 Lts. wide course S. E.

25-70 Gulch 30 Lts. wide course S. E.

Ascend

32-00 South Slope of ridge bears N. W.

38-98 Set a Southstone 18+12+10 ins.

12 ins in the ground for

1/4 sec cor. Marked 1/4 on

N. face. From which

A Pine 4 ins in diam

bears S 79° E. 40 Lts. dist.

Marked 1/4 S 6-B.T.

A Pine 10 ins. in diam,

bears N. 68° W. 62 Lts. dist.

Marked 1/4 S. 31. B.T.

42-00 Bottom of hill.

50,00 Descend

51-01 Gulch 10 Lts. wide course S. E.

Ascend

51-80 Ridge Slopes. S. E.

T 19 N R. 4 E.

Descend

58⁰⁰ Descend into Ycaumon
Creek59⁰⁰ Enter Ycaumon Creek
course S. W. (Dry)69⁰⁰ Saw Ycaumon Creek
course S. W.

Ascend

77⁰⁰ ascend steep hills78-98 Set a malpais stone 24x16x10
ins 18 ins. in the ground
for cor. of Secs 5-6-31 and 32
marked with 5 notches
on E and 1 notch on W. faces
From whichA pine 5 ins. in diam,
bears N 78° E. 136 lks. dist.
marked T 19 N - R 4 E. S 32. B. T.A cedar 12 ins in diam,
bears N 17 1/4° W. 256 lks. dist

South Boundary of

marked T19N. R4E S. 6 B.T.

no other trees within limit
and raise a mound of
stone 2 1/2 ft base 1 1/2 ft. high
N. of cor.

Pits impracticable

Sand mountainous

Dair 3rd rate

Timber Pine and cedar
mountainous and heavily
timbered land 78,98 acs.

November 1st 1962

November 1. at 8 1/2 a.m. from C. S. set off 35° 1' N. on the cat
arc #33 S. on the decl. arc and determine a true
meridian with the solar and sun

East of Sec 5 and 32
over mountainous land
through dense undergrowth
Ascend

7.50 Ridge slopes N
Descend

11.70 Gullch 100 ft. deep course N
Ascend steep bluff

13.00 Top of bluff bears N and S

↑ 19 N. R. 4 E

21.00 Ridge bears N and S.
Descend

26.00 descend into deep gulch

29.00 Gulch 50 ft wide course N. W
Ascend

30.65 Perpendicular bluff 50 ft high
bears S. E and N. W
Ascend

31.00 Top of bank

40.00 set a sandstone 24 x 8 x 6 ins
18 ins. in the ground for
cor. of sec cor.

marked ~~the~~ ~~face~~ ~~at~~ ~~from~~ which
a pine 6 ins in diam
bears N 88° E 141 ex. dist

marked 1/4 S 32. B.T.

no other tree within limit
raise mound of stone

3 ft base, 2 ft high. N of cor

26

BOOK 1425

South Boundary of

- Pits impracticable.
- 42.50 Ridge leaves S. E. and N. W.
- 47.00 Descend
- 67.30 Top of bluff 150 ft high
leaves N. and S.
Descend
- 70.75 Gulch 40 ft. wide crosses N
Ascend
- 80.00 set a sandstone 20x12x4 ins
15 ins. in the ground for
cor of sec 4 - 5 - 32 and 33
marked with 2 notches on W
and 4 notches E. of top
and raise a mound of stone
3 ft, base 2 ft high W of cor,
Pits impracticable
- Sand Mountains
Dir of ~~the~~ rate
Timber Scattering ^{2 day} Pine and
Mountains descend

Y 19 N. R. 4 E

and land covered with
dense undergrowth
80.00 Chs.

November 2, 1902

November 3, at 7 a.m. l. mt. 5 set of 35- ϕ on the decl. arc:
14-43' S on the decl. arc and determine a true meridian
with the solar and sun

East bet Seas 4 and 33
Over mountainous land
Through dense Undergrowth
ascend

31.00 High Ridge Lead S. E. and N. W.
Descend

40.00 Oil Sandstone 24 x 12 x 10 ins
18 ins. in the ground for $\frac{1}{4}$
sec. cor marked $\frac{1}{4}$ on face
and raised mound of
stone 3 ft base 2 ft high
N of cor.

Pits impracticable

47.50 Top of high Pass

South Boundary of

Descend

54.50 Bottom of deep canon
course N. W.

Ascend

69.00 Top of sharp ridge bears S. 69° NW
Descend

77.25 Bottom

Ascend

80.00 set Limestone 18x10x8 ins
12 ins in the ground for cor.
of sec. 3-4 - 33 and 34
marked with 3 notches on
E and W. edges and
raise mound of stone
3 ft base 2 ft high N. of cor.
Pits impracticableLand very mountainous
Dirt & L. rate

No Timber

mountainous land

119 N. R. 4 E

and land covered with
dense undergrowth of oak
and manzanita, 80 -- ch

November 3, 1902

November 3, at 8¹/₂ a.m. l.m.t. set off 3.5° N on the
lat arc 15° 11' S on the decl arc and determine a true
meridian with the solar and run

East bet. Secs. 3 and 34.

Over mountainous land
through dense undergrowth
Ascend

37.50 Top of narrow river
1000 ft. high bears N.E. & S.W.
Descend

40.00 Set Limestone 24 x 12 x 8 ins.
18 ins in the ground for 1/4 sec,
cor. marked 1/4 on N. face
and raise mound of stone
2 1/2 ft. base 1 1/2 ft high N. of cor.
Pits impracticable

70.70 Gulch 500 ft. deep course S. E
Ascend

South Boundary of

80.00 ^{less deep?} set Limestone 20x12x8 ins. 15 ins. in the ground
for cor. of Secs 3-~~3~~-34 and 35
marked with 4 notches on W. and
2 notches on E. edges

From which

a Cedar 5 ins in diam.

bore S. 81/4° W 84 lks. dist.

marked T18N. R4E S 3-13T.

No other trees available

raised mound of stone

2 1/2 ft. base 1 1/2 ft. high W. of cor.

Pits impracticable

Land mountainous

@ rate of $\frac{1}{2}$ rate

No timber

Mountainous land and

land covered with dense

undergrowth of oak and

manzanita 80.00 chs

Y 19 N. R. 4 E

- East bet. Secs 2 and 35
over mountainous land
through dense undergrowth
- 3.00 Ridge bears S. E. and N. W
Descend very steep hill
- 14.35 Bottom of deep Gulch and
Mooney Trail, Steep off to
Jerome bears N 70° E & S 70° W
- 14.50 Ascend
- 35.00 Ridge bears N. E. and S. W,
Descend
- 40.00 Set Sandstone 20x10x5 ins 15 ins.
in the ground for ~~the~~ Sec cor.
marked 4 on n face
raise mound of stone 3 ft. base
2 ft high N. of cor.
Pits impracticable
- 47.00 Gulch 300 ft deep course S,
Ascend
- 53.75 Ridge bears N and S

South Boundary of

71.50 Gulch 300 ft deep comes S.W.
Ascend bluff

76.65 Ridge 500 ft high
bears N.E. and S.W.
Descend

80.00 Set Sandstone $2\frac{1}{2} \times 12 \times 4$ ins
18 ins. in the ground for cor.
faces. 1-2-35 and 36
marked with 5 notches on W
and 1 notch on E. edges
from which

an oak 5 in. in diam.
bears N 67° E 74 lbs. dist.
marked T. 19 N-R 4 E.S. 36 B.T.
an oak 6 ins. in diam.

bears S. $88\frac{1}{2}^{\circ}$ E. 73 lbs. dist.
marked T. 18 N-R. 4 E.S. 1 B.T.
an oak 6 ins. in diam.

bears S. $64\frac{1}{2}^{\circ}$ W. 63 lbs. dist
marked T. 18 N-R 4 E.S. 2 B.T.

T 19 N. R. 4 E.

an Oak Grove in view
 bears N 28 1/2° W. 113 chs. dist.
 marked T. 19 N. R. 4 E. S. 35 B.T.

Sand Mountainous

Oak & $\frac{1}{2}$ rate

Timber scattering oak
 Mountainous land and
 Sand covered with dense
 undergrowth of oak and
 Monzonia 8000 chs

November 4, 1902

✓ November 5, at 7.30^{am} in 1770. S set off 35.1' from the
 lat. arc: 15° 26' S on the decl. arc, and determine a
 true meridian with the solar and sun

East bet. Secs. 1 and 36

Over mountainous land
 through dense undergrowth
 Descend

2.50 Gulch 100 below Sec. cor
 course S 25° W.

Ascend very steep ridge

8.75 Ridge bears N. and S.

South Boundary

It being impracticable to chain the line across the canon I sent the flag around to the ridge on E. side on line and triangulated distance.

I lay out ~~base line N. 18° 37' E~~
~~10.21 chs. and set flag from~~
~~which the flag bears~~
 ang. 11° 06'

See next page

as. Log. Sine. ar. com 0.715520

is to " Dist. Base 10.21 3.009026

So. is " Sine ang. 82:29' 9.996252

Required Side Log, 3.720798

= 52.58 chs.

added to 875' chs. makes
 61.33

Flag and Ridge bears S. 67.5° W.

The point for the $\frac{1}{4}$ sec cor. on this line is inaccessible

Descend

Y 19 N. R. 4 E

35

BOOK 1425

Pits impracticable
Sand Mountains
Oil & gas
Scattered Pine
Mountains land and land
covered with dense

South Boundary of

X X

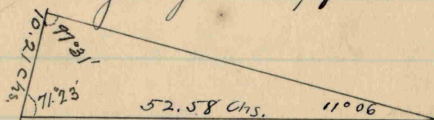
Base line bears $n 18^{\circ} 37' E$. Dist.

10.21 chs. -

With plates at 0° and cross wires set on flag on bdy. line I turn angle to flag at N. end of base line which reads $71^{\circ} 23'$.

I then set my transit over point at N. end of base line and with plates clamped at 0° and cross wires set on flag at S. end of base line, I unclamp plates and turn cross wire on flag on bdy. line to East, the resulting angle is $97^{\circ} 31'$

Note
 owing to its extreme roughness
 of the ground I was not practicable
 to get a longer base line.



The point for the $\frac{1}{4}$ cor.
 cor. on this line is in-
 accessible
 Descend

11 No. 1425
of 19. N. R. 4 E.

80.00 Oil Sandstone 20x12x8 ins
15 ins. in the ground for
cor. of Sp. 18 and 19 N-
R 4 and 5 E.

Marked with six notches
on each edge

— from which
a Pine 24 ins in diam.
bears S. 35 $\frac{1}{2}$ ° W. 210 lks. dist.
Marked T 18 N - R 4 E. S 1 B. T.
No other trees available
rais mound of stone
2 $\frac{1}{2}$ ft base 1 $\frac{1}{2}$ ft high
S. of cor.

Pits impracticable
Sand Mountainous
@ oil 4 $\frac{1}{2}$ rate

Scatterng Pine
Mountainous land and low
covered with dense

36 South Boundary of
T19 N. R. 4 E.

undergrowth 80,000 ft.
November 5, 1902

BOOK 1425

November 6 at 8^h 30^m a.m. l.m.t. S
✓ Set off 35° 1' N. on the lat. arc, 15° 48' S on
the decl. arc, and determine a true
meridian with the Solar

East Boundary of T. 19N-R. 4E

at the cor. of Tps.
18 and 19 N-Rs. 4 and 5 E,
established by me.
Thence I run
North on a random
line along the E. bdy. of
Tps. 19 N-R. 4 E.
Setting temp. 1/4 sec. and
sec. corr. at intervals
of 40.00 chs.; and at
478.69 chs., intersect
the N. bdy. 9.75 chs. ^{089°10'} W.
of the cor. of Tps. 19 and 20 N
Rs. 4 and 5 E.

See Amended
notes

There I set a marble stone
18x8x6 ins., 12 ins. in the
ground for cor. of Tps. 19 N
Rs. 4 and 5 E marked with
6 notches on E. N. and S.
edges - from which

East Boundary of

a Pine 4⁰ ins. in diam.
Leaves S 8⁰ E 62 lbs. dist.

marked T 19 N - R 3 E 56 B.T.

an Oak 8 ins. in diam
Leaves S. 76° W. 70 lbs. dist.

marked T 19 N - R 4 E 51 B.T.

I destroy the markings
on the trees, at the old
corn, referring to these
secs. November 6 1902

Thence I run
South on a true line
bet. Secs 1 and 6
over mountainous land
through heavy timber
Descend

35.60 Gulch 30 Sds. wide course S.W

Ascend

38.69 set a Malpais Stone 18 x 12 x 8 ins.

12 ins. in the ground for

For North 1/2 mile
see Amended
Survey Book 10

Y 19 N. R. 4 E.

$\frac{1}{4}$ Sec. cor. marked $\frac{1}{4}$ on W
face from which
an oak 7 ins. in diam.

bears N 5° E 19 lbs. dist.

marked $\frac{1}{4}$ S. 6 B.T.

An oak 12 ins in diam

bears N 68° W. 28 lbs. dist.

marked $\frac{1}{4}$ S. 1. B.T.

see any
survey

45.30 Ridge bears N E. and S. W
Ascend

57.00 Gulch 20 lbs. with course S W
Ascend

78.69 set a malpais stone $20 \times 10 \times 6$ ins
15 ins in the ground for cor. of
Secs. 1-6-7 and 12.

marked with 1 notch on N.
and 5 notches on S. edges

from which

an oak 4 ins. in diam.

bears N. 72° E. 59 lbs. dist

East Boundary of

marked T 19 N. R 5 E S 6 B.T.
an Oak 4 ins. in diam.

Lease S 18 $\frac{1}{4}$ ° E - 88 lbs. dist.

marked T 19 N R 5 E S. 7 B.T.

an Oak 8 ins. in diam.

Lease S 45 $\frac{1}{4}$ ° W. 82 lbs. dist.

marked T 19 N - R 4 E S 12 B.T.

an Oak 4 ins. in diam.

Lease N 52° W. 91 lbs. dist.

marked T 19 N R 4 E S. 1 B.T.

Land mountainous

Soil of $\frac{1}{2}$ rate

Timber Pine and Oak

mountainous and heavily

timbered land 7869 lbs

November 6 1902

✓ November 8, at 8^h a.m. l.m.t. I set off 35° 5' N
on the lat. arc; 16° 23' S. on the decl. arc
and determine a true meridian
with the Solar

Sent Sect. 7 and 12
 over mountainous land
 through heavy timber

40.00

Set Malpais stone 18x10x6 ins.
 12 ins. in the ground for $\frac{1}{4}$ Sec.
 cor. marked $\frac{1}{4}$ on N face
 from which

a Pine 12 ins. in diam.
 bears N $85\frac{1}{2}^{\circ}$ E 72. lvs. dist.
 marked $\frac{1}{4}$ S. 7 B.T.

a Pine 14 ins. in diam.
 bears S. 62° N 53 lvs. dist.
 marked $\frac{1}{4}$ S. 12 B.T.

66.00

Descend river bears S E, and N W

80.00

Set a Malpais stone 20x10x8 ins.
 15 ins. in the ground for cor.
 of Sec. 7-12-13 and 18
 marked with 2 notches on N,
 and 4 notches on S edge
 from which

East Boundary of

a Pine 16 ins in diam.

Bears N 22° E. ¹¹⁵ ~~170~~ 44 dist

marked T19N. R5E S. 7 B.T.

an Oak 8 ins. in diam.

Bears S. $58\frac{1}{2}^{\circ}$ E. 10 lks. dist.

marked T19N R5E S 18 B.T.

an Oak 12 ins. in diam.

Bears S. ¹²² 27° W. 68 lks. dist.

marked T19N-R4E S 13-B.T.

an Oak 8 ins, in diam.

Bears N. 57° W. 60 lks. dist.

marked T19N-R4E S. 12 B.T.

Sand rolling

@ 3 $\frac{1}{2}$ rats

Timber Pine and Oak

Heavily timbered land

So = chs

Y 19 N. R. 4 E

South Lot Secs. 13 and 18
Over Mountains land
through heavy timber
ascend

17.50 Gulch 300 ft. deep comes W,
ascend

40.00 Set a malpais stone 18x14x8 ins.
12 ins. in the ground for 1/4 sec.
cov. marked '14 on W face
from which

and a 8 ins. in diam,
bears N 8° E 9 lks. dist.
marked '14 5 18 B.T.

and a 8 ins in diam
bears West. 13 lks. dist.
marked '14 5 13 B.T.

47.00 Top of rim bears N 8° E and S. W

51.60 Trail bears E. and N.

71.00 Ridge bears E and N.

77.00 Descend

East Boundary of

- 80.00 Sta malpais Stone 24x16x5 ins.
 18 ins. in the ground for corer
 pcc 13-18-19 and 24
 marked with 3 notches on N
 and S. edge. From which
 Oak 8 ins in diam
 bears N. 70° E. 30 yds. dist.
 marked T19N-R5E.S. 18 B.T.
 and oak 12 ins. in diam.
 bears S 67½° E. 100 yds. dist.
 marked T19N R5E.S. 19 B.T.
 and oak 10 ins. in diam.,
 bears S + 0½° W. 27 yds. dist.
 marked T19N-R.4E.S. 24. B.T.
 a Pine 30 ins in diam.,
 bears N 37° W. 31 yds. dist.
 marked T19N-R4E. S13 B.T.

Sand mountains

Trace of rats

Timber Pine and Oak
 mountains and heavily
 timbered land 80° and

Y 19 N. R. 4 E

South Sect. Secs. 19 and 24
Over mountainous land
through heavy timber

Jan. 31 / Descend

16. 60 Trail bears S. 60° E and N. 60° W.
Ascend

27. 50 Mooney trail 25 lks. W.
bears N. 20° W and S 10° W

38. 00 Ridge bears E and W.
Descend

40. 00 Set a marble stone $7\frac{1}{2} \times 12 \times 8$ ins.
18 ins. in the ground for "Sec."
cor. marked $\frac{1}{4}$ on W. face
From which

and set 12 ins in diam.

bears N. 51° E. 52 lks. dist.

Marked $\frac{1}{4}$ S. 19 B.T.

and set 16 ins in diam.

bears N. 50° W. 72 lks. dist

Marked $\frac{1}{4}$ S. 24. B.T.

East Boundary of

- 41.00 ascend
- 48.75 Trail bears S. E. and N. W.
- 52.00 Top of flat ridge bears S. E. and N. W.
- 64.00 descend
- 76.10 Head of Gulch course S. E.
ascend
- 80.00 Seta Malpais Stone 24 x 14 x 8 ins.
18 ins in the ground for cert.
of Secs. 19-24-25 and 30.
Marked with 4 notches on
N and 2 notches on S. edges
~~from~~ which
are 24 ins. in diam
bears N 62 $\frac{1}{2}$ ° E. 64 lks. dist.
Marked T19N-R5E, S. 19 B.T.
- are 4 ins in diam
bears S. 44 $\frac{1}{2}$ ° E 83 lks. dist.
Marked T19N-R5E, S. 30 B.T.
- are 8 ins in diam
bears S. 18° N 12 lks. dist.

✓ 19 N. R. 4 E.

BOOK 1425

47

marked T 19 N - R 4 E. S 25. B.T.
A Pine 20. ins in diam,
bears $\text{N} 22^{\circ} \text{W}$. 68. lks. dist.

marked T 19 N - R 4 E. S 24 B.T.

Sand mountains

Soil 3' ² rot

Timber Pine and oak

mountainous and
heavily timbered land

80 ^{December} lbs 8, 1902

noon on 9th a.m. l.m. v. 5 set off $35^{\circ} 3' \text{N}$ on the lat.
arc; $16^{\circ} 40' \text{S}$ on the def. arc and also on a true
meridian with the polar and sun

South of Sect 25 and 30

over mountainous land

through heavy timber

1.50 Descend

31.70 Gulch 25 lks. wide come S. E

37.80 Gulch 30. lks. wide come S. W

40.00 Set a sandstone $20 \times 12 \times 8$ ins.

15 ins. in the ground for $\frac{1}{4}$

Sec. cor. marked $\frac{1}{4}$ on W face

East Boundary of

- from which
 a Oak 14 ins. in diam
 bears S 69° E, 39 lks. dist.
 marked 1/4 S, 30 B.T.
- a Pine 16 ins. in diam,
 bears S 20° N, 70 lks. dist.
 marked 1/4 S 25 B.T.
- 51.00 Ridge bears N. E. and S. W.
 Descend
- 64.00 Gulch 50 lks. wide comes S. 60° N
 Ascend steep hill
- 76.00 Top of ridge bears S E and N. W.
- 80.00 ^{Small} Set a ~~stone~~ stone 18x10x6 ins.
 12 ins. in the ground for cor of
 Secs. 25-30-31 and 36
 marked with 5 notches
 on N and 1 notch on S. edge
- from which
 a Pine 16 ins. in diam.
 bears N. 25° E. 75 lks. dist.

T19 N. R. 4 E

marked T19N-R5E S. 30 B.T.

a Pine 24 ins in diam.

bearing S 17 1/2° E. 26 lks. dist.

marked T19N-R5E S. 31 B.T.

a Pine 18 ins in diam.

bearing S. 74 1/2° W 83 lks. dist.

marked T19N-R4E S. 36 B.T.

a Pine 30 ins. in diam.

bearing N 72 W. 49 lks. dist.

marked T19N R4E S 25-B.T.

Land Mountainous

Dirt & the rest

Timber Pine and Oak
 Mountainous and heavily
 timbered land 80,000 acres

East Boundary of

X	South bet Secs. 31 and 36 over Mountainous land through heavy timber
2.00	Descend
7.00	Ascend
25.50	Ridge bears S-E. and N.W. Descend
40.00	Set Malpais stone 20x12x4 ins. 15 ins. in the ground for $\frac{1}{4}$ Sec. cor marked $\frac{1}{4}$ on W face From which a cedar 18 ins. in diam. bears S. 57. $3\frac{1}{4}^{\circ}$ E. 136 lbs. dist. marked $\frac{1}{4}$ S. 31 B.T. a Pine 6 ins. in diam bears N. 32 $\frac{1}{2}^{\circ}$ W. 71 lbs. dist. marked $\frac{1}{4}$ S. 36. B.T.
52.00	Top of river bears E and W. Descend
77.50	Gulch 700 ft below river

J 19 N. R. 4 Eth

Course S. E.

ascend

80.00 Cor. of Sps. 18 and 19 N-Rs.
4 and 5 E.

Land mountainous
Soil + L. rate

Timber Pine and Oak
mountainous and heavily
timbered land 80.00 acs.
November 9th 1907

✓ November 10th at 8th a.m. l.m.t. I set
off 35.6' N. on the deck arc. 16.57' S. on the
on the deck arc, and determine a
true meridian with the Solar

North Boundary of

at the cor. of Sp.

20 N. Tks. 4 and

5 E. reestablished
by me thence

I run West on a
random line along
the N. bdy. of T. 19 N R 4 E.

Setting turns $\frac{1}{4}$ Sec.
and Sec. corr. and at
242.17 chs. the witness

cor. of Secs 3-4-33 and 34
Leas S. 351 chs.

answering to a falling
of 1.16 lbs. per mile

Therefore from
the witness cor. I

run thence
N 89° 10' E bet. Secs 4 + 33

Descend in to Oycannon
Cannon

See Amended survey
Book "10" for this line.

119 N. R. 4 E.

5-66 Set a Limestone $18 \times 12 \times 6$ in.
12 in. in the ground for cor.
of Secs 3-4-33 and 34
Marked with 3 notches on
E and N. edges
and raise a mound of
stone 3 ft. base. 2 ft high
N of cor.

Pits impassible
Land mountainous
Dial, + $\frac{1}{2}$ crate

No timber

mountainous land and
Land covered with dense
undergrowth of oak

5.6.6 obs.

November 10th 1902

November 11, at 8^h 30^m a.m. mt.
I set off $35^{\circ} 06' N$ on the lat. arc; $17^{\circ} 15' S$
on the decl. arc, and determine a
true meridian with the Solar

This line being out of limits, and WC being subject to adjustment,
true line should have been surveyed 44 in. East to a point E of SW cor. of R. 5 E
through fraction on E 1/2 mile of S. Sec. 33

North Boundary of

✓ N 89° 10' E but Secs. 3 & 34
Over mountainous land
through dense undergrowth
Ascend

39.4 1/2 Set a Limestone 20 x 12 x 8
5 ins. in the ground to bedrock
surrounded by mound
of stone 2 1/2 ft base 1 ft high,
for 1/4 Sec. cor. marked
1/4 on N. face
and raise mound of stone
3 ft. base 2 ft. high N.
P cor.

For this work, see
Amended Survey Book "10"

Pits impracticable

51.50 Bottom of Sycamore
Canyon 1000 ft. deep
course S. 10° E.

Ascend E. Wall of canyon

78.82 Set a Limestone 18 x 12 x 8 ins.
12 ins in the ground for

Fig. N. R. 4 E.

Cor. of Secs. 2-3-34 and 35
 marked with 2 notches on
 E. and 4 notches on N. edges
 and raise a mound of
 stone 3 ft. base 2 ft. high
 N. of cor

Its impacticable
 Land Mountaineer
 @ all 4th rate

Timber scattering Pine.-
 Sycamore and ash along
 the canon

Mountaineer land and
 land covered with dense
 undergrowth of oak.

Maryanita

78-8³ chs.

North Boundary of

- N 89° 10' E. bet Secs 2 and 35
Over mountainous land
through dense undergrowth
Ascend
- 39.42 At a Limestone 20x10x5 ins
5 ins. in the ground ~~to bedrock~~
Surrounded by mound of
stone 2 1/2 ft. base. 1 ft high.
Marked 44 on N. face
Raise md. of stone 2 1/2 ft. base 1 1/2 ft. high. N of cor.
Ditch impracticable
- 51.00 Top of first wall of canon
bears N. and S.
Ascend
- 78.84 At a malpais stone 24x12x10 ins.
18 ins. in the ground for
cor. of Secs. 1-2-35 and 36
Marked with 1 notch on E
and 5 notches on N edges
From which
a Pine 18 ins. in diam.

For this mtch, see
Amended survey
Book "40"

19 N R 4 E

Bear N. $20^{\frac{3}{4}}^{\circ}$ E. 127 lks. dist.
marked T 20 N - R 4 E. S. 36 B.T.

A Pine 36 ins. in diam.

Bear S. 36° E 87 lks. dist.

marked T 19 N - R 4 E. S. 1 B.T.

A Pine 24 ins. in diam.

Bear S. 60 N. 139 lks. dist.

marked T 19 N - R 4 E. S 2 B.T.

A Pine 24 ins in diam.

Bear N $17^{\frac{1}{2}}^{\circ}$ W. 120 lks. dist.

marked T 20 N - R 4 E. S. 35 - B.T.

Land Mountainous

Dair & $\frac{1}{2}$ rate

Dumber Pine on E. $\frac{1}{2}$ of this

mountainous and heavily

timbered land and land

covered with dense under-

growth of oak and magnolia

78.84 lks

North Boundary of

N 89° 10' E. bet. Secs. 1 and 36
Over mountainous land
through heavy timber
Ascend

11.00 Ridge bears S. E. and N. W.
Ascend

23.25 Gulch 30 yds. wide course N. W.
Ascend

33.00 Ridge bears S. E. and N. W.
Ascend

39.42 set a mark 18+12+6 ins.
12 ins. in the ground for $\frac{1}{4}$
sec. cor. marked $\frac{1}{4}$ on N. face

from which
a Pine 36 ins in diam.
bears N 65½° E. 61 yds. dist.

Marked $\frac{1}{4}$ S. 36 B.T.

an Oak 8 ins. in diam.

bears S. 4° N. 37 yds. dist.

Marked $\frac{1}{4}$ S. 1 B.T.

For this
mtd. see
Amended survey, Book 1425

Y 19 N. R. 4 E

40-50 Gulch 50 lds. wide course N60°W
Ascend

57-00 Descend along S. side of Gulch

65-50 Bottom of Gulch course N75°W
ascend

71-00 Top of flat ridge

78-84 The cor. of Tps. 20 N.

R. 4 and 5 - E

Land mountainous

oak & ^hoaks

Timber Pine, cedar and oak

mountainous and heavily

timbered land 78-84 chs.

November 11th 1902

Boundaries T. 19. N. R. 4 E.

See amended table.

Boundaries T. 19. N. R. 4 E.

Latitudes, Departures, Closing Lines

Line Designated	True Bearing	Distance Chs.	Latitudes		Departures	
			N. Chs.	S. Chs.	E. Chs.	W. Chs.
West Bay.	North	240.00	240.00			
" "	N. 1° 38' E.	39.74	39.72		1.13	
" "	N. 8° 05' E.	62.23	61.60		8.76	
" "	North	58.65	58.65			
" "	N. 0° 20' W.	39.70	39.70			23
" "	North	39.60	39.60			
North Bay.	S. 89° 50' E.	80.10		.23	80.10	
" "	S. 89° 32' E.	40.06		.32	40.06	
" "	S. 89° 30' E.	40.11		.35	40.11	
" "	S. 89° 50' E.	74.34		.21	74.34	
" "	N. 89° 10' E.	232.42	3.37		232.40	
East Bay.	South	478.69		478.69		
South Bay	West	478.98				478.98
Convergency					.51	
			482.64	479.80	477.40	479.21
			479.80			477.40
	Error in Lat.		2.84	Error in Dep.		1.81

Andrew Barry,
U. S. Deputy Surveyor.

(For final work see S. Bdy. of
T. 19 N. R. 5 E.)

BOOK 1425 61

A P P R O V A L.

Office of the

United States Surveyor-General,

Phoenix, Arizona.

~~June 21~~ - 1904
May - 10 -

The foregoing field notes of the sur-
vey of *the Boundaries of T. 19. N.;*
R. 4 E,

of the Gila and Salt River Base and Me-
ridian, in the Territory of Arizona,
executed by *Andrew Barry*

United States Deputy Surveyor, under his
contract No. 99, dated *June 30, 1902,*
having been critically examined, and the
necessary corrections and explanations
made, the said field notes, and the sur-
veys they describe, are hereby approved.

Frank S. Ingalls

U. S. Surveyor-General.