

No. 1459

# Field Notes

OF THE SURVEY OF

The Colorado River  
Base  
<sup>and</sup>  
Meridian.

~~Gila and Salt River Base and Meridian~~

## ARIZONA.

By Chandler Robbins D. S.

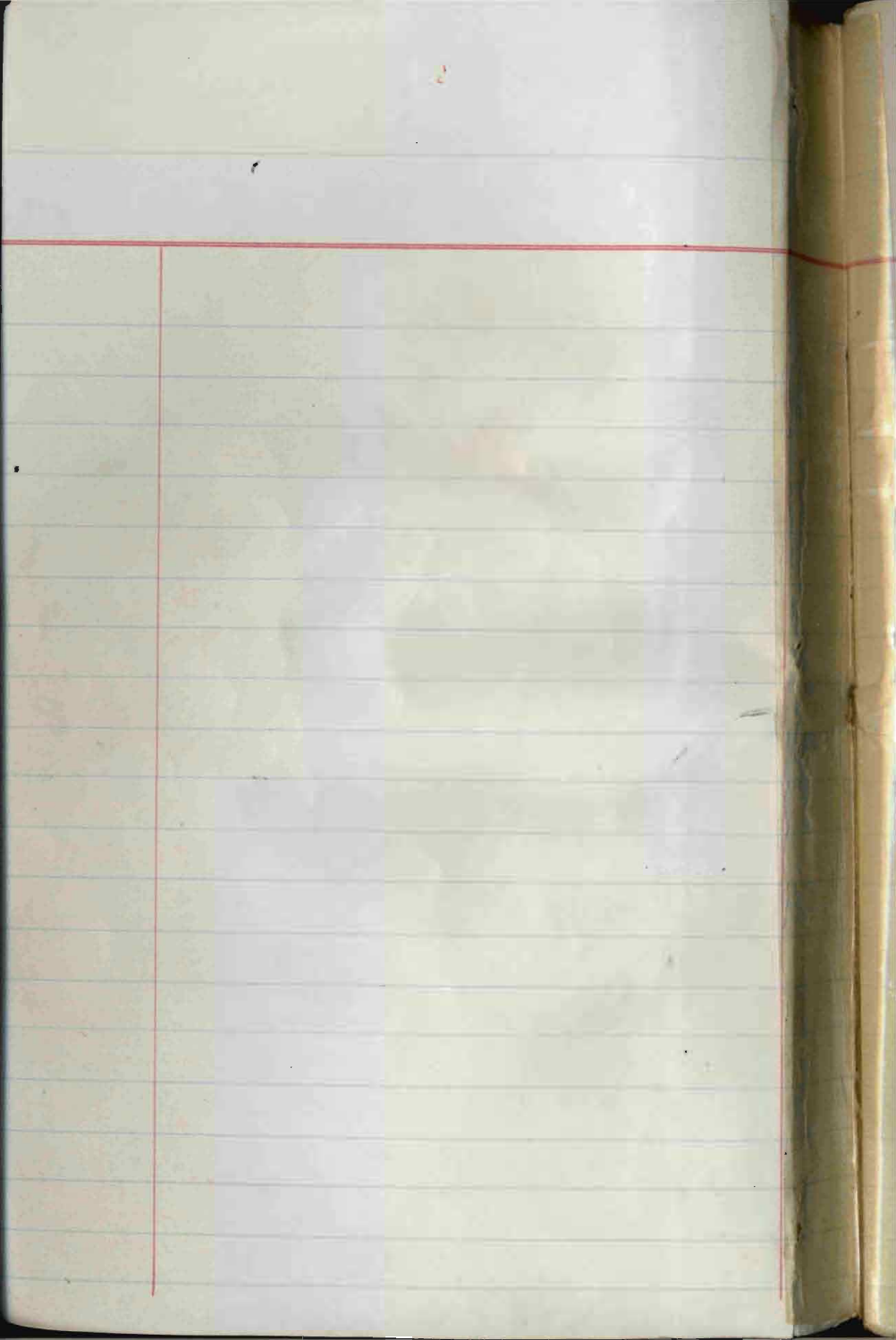
under contract dated May 26, 1875.

Survey commenced Nov. 26, 1875.

Survey completed Nov. 29, 1875.

1459

No. 1459





"B"

Field notes of the survey of  
the Colorado River Meridian and  
Base line in the Colorado River  
Indian Reservation

## Colorado River Mendocino

Mendocino

The initial monument - is located on a small mountain in the eastern part of the Reservation, and consists of a mound of Granite Blocks, 6 feet high, and 10 ft in diam, with a Granite 28x16x14 in. in the Summit. Marked on the

N.E. T. 1, N. R. 1, E. Sec 31

on the S.E. T. 1, S. Sec. 6.

on the S.W. R. 1, W. Sec 1

on the N.W. T. 1, N. R. 1, W Sec 36

on the Top C. R. 1, R. 1875.

No. Natural objects visible for bearings

N. between Secs 31 + 36

or 14° E.

2000

Set a Granite Stone 18x18x16  
in a Mound of Stones & marked  
1/6 on N side for 1/6 Sec. cor.

## Colorado, River Meridian

Corners

4000

Set a Granite Stone  $12 \times 12 \times 12$ , in  
a mound of stones + marked  
 $\frac{1}{4}$  on W. side for  $\frac{1}{4}$  Sec. cor.

6000

Set a Granite Stone  $24 \times 10 \times 6$  in  
a mound of stones + marked  
 $\frac{1}{16}$  on W. side for  $\frac{1}{16}$  Sec. cor

8000

Set a Granite Stone  $14 \times 10 \times 7$ , in a  
Mound of stones marked - on S and  
 $\equiv$  on N. side for cor Secs. 25-30 + 31 +  
36. Broken Mountains 3<sup>d</sup> rule ✓

N. between Sections 25 + 30

Va  $14^{\circ} E$ .

2000

Trap Stone  $14 \times 10 \times 6$ , in a mound  
of stones + marked  $\frac{1}{16}$  on W. side  
for  $\frac{1}{16}$  Sec. cor.

2570

Edge of rocky Cañon, corner S. E.,  
set flag on line on opposite side  
of corner. Measure 300 chs, west-

## Colorado River, Meridian,

Chain

to a point, from which flag  
 bears  $N 13^{\circ} 18' E$ . bearing =  $4,230.29.77$   
 $\times 3 = 12,690$  chs, distance across  
 Cañon

37.79

To North Side of Cañon

40.00

Set a Lava Stone  $18 \times 10 \times 4$ , in  
 a mound of stones & marked  $1/4$   
 on W. Side for  $1/4$  Sec, cor.

60.00

Set a Sand Stone  $14 \times 10 \times 5$  in  
 a mound of stones, & marked  $1/6$   
 on W. Side for  $1/6$  Sec, cor.

80.00

Leave Mountains Course E. & W.  
 Set a Sand Stone  $14 \times 12 \times 5$  in  
 a mound of stones marked = on  
 Sand  $\equiv$  on N. Side for Cor to Secs  
 19-24, 25 & 30. Broken Mountains 3<sup>rd</sup> Sec

Colorado, River, Mandolin

Cement

Cr. between Sections 19 + 24

NW 14° E,

- 20,00 Set a Granite Stone 12 x 10 x 8 in a mound of Stones, marked  $\frac{1}{16}$  on W. Side, for  $\frac{1}{16}$  Sec, cor.
- 40,00 Set a Granite Stone, 16 x 12 x 5 in a mound of Stones marked  $\frac{1}{4}$  on W. Side for  $\frac{1}{4}$  Sec, cor.
- 60,00 Set a Granite Stone 22 x 12 x 8, in a mound of Stones marked  $\frac{1}{16}$  on W. Side for  $\frac{1}{16}$  Sec, cor.
- 80,00 Set a Granite Stone 20 x 12 x 3 marked  $\equiv$  on S, and  $\equiv$  on N. Sides for Cr. to Secs 13-18 + 19 + 24  
Luna rolling die candy 3<sup>d</sup> rate



## Colorado, River, Meridian

Chemin

N. Gettown Section 13+18

N<sub>W</sub> 14<sup>th</sup> E.

20,00

Set a Granite Stone 16x14x8 in, a mound of stones marked 1/16 on W. side for 1/16 Sec. cor.

40,00

Set a Granite Stone 18x12x8 in a mound of stones marked 1/4 on W. side for 1/4 Sec. cor.

60,00

Set a Granite Stone 24x12x8 in a mound of stones marked 1/16 on W. side for 1/16 Sec. cor.

80,00

Set a Granite Stone 12x12x8 in a mound of stones marked  $\equiv$  on S and = on N sides for cor to Secs 7-12+13+18. Land rolling due Dandy 3<sup>d</sup> rate

## Colorado, River Mendocino

Stations

N. between Sections 7, +, 12

N 14° E,

- 20,00 Set a Granite Stone 16 x 18 x 6 in a mound of stones marked 1/16 on W side for 1/16 Sec, cor.
- 40,00 Set a Sand Stone 20 x 10 x 8 in a mound of stones marked 1/4 on W side for 1/4 Sec, cor.
- 60,00 Set a Sand Stone 24 x 12 x 5 in a mound of stones marked 1/16 on W side for 1/16 Sec, cor.
- 80,00 Set a Granite Stone 18 x 10 x 8 in a mound of stones marked  $\equiv$  on Sand - on N. side for cor to Sec 1-6 on 7+12. Land rolling, soil sandy 3<sup>d</sup> Fall.

## Colorado, River, Meridian

Chains

N. between, Sections 1+6

On 14° E.

20,00

Deposited a marked Stone set a Mesquite post-4 ft long 2 in Square 12 in in Earth marked  $\frac{1}{10}$  on W Side dug pits E + W 18 in Square 12 in deep raised a mound of earth  $4\frac{1}{2}$  ft in diam + 2 ft high for  $\frac{1}{10}$  sec, cor.

24,00

Enter level bottom, bears E + S.W.

32,30

Dry wash 3,50 chs wide course S.W.

40,00

Deposited a marked set a Mesquite post-4 ft long 2 in Square 12 in in Earth marked  $\frac{1}{4}$  on W Side dug pits E + W, 18 in. Square 12 in deep, raised a mound of earth  $4\frac{1}{2}$  ft in diam + 2 ft high for  $\frac{1}{4}$  sec, cor.

60,00

Deposited a marked Stone set a Mesquite post-4 ft long 2 in Square 12 in in Earth marked

## Colorado River Mound

Mans

1/16 on W. Side dug pits E & W.  
 18 in. Square 12 in. deep.  
 raised a mound of earth 4 1/2  
 ft. in diam + 2 ft high for  
 1/16 see cov

8000

Set a Grey Granite Stone  
 18 x 10 x 5 in. Mound of Stone  
 marked ≡ on N, ≡ on S, ≡ on E  
 and ≡ on W. Sides for cov to see  
 1 + 6 + 3 + 36, 1st 24 Chs land  
 rolling + sandy 3<sup>rd</sup> rate balance  
 level 1st rate bottom. Mesquite  
 + Cornus etc

Nov. 26<sup>th</sup> 1875

# Colorado River Mounds

Chambers

T. 2, N. Range 1, E. + 1, W.  
N between Sections 31 + 36

N 14° E,

20.00

Deposited a marked Stone set a  
Mesquite post - 4 ft long 2 in square  
12 in, in earth marked 1/16 on W side,  
 dug pits E & W, 18, in square 12 in  
 deep, raised a mound of earth  
 4 1/2 ft - in diam + 2 ft - high  
 for 1/16 Sec ev

40.00

Deposited a marked Stone set - a  
Mesquite post - 4 ft long, 2 in square  
12 in, in earth marked 1/4 on W,  
 side dug pits E & W, 18, in square  
12 in deep, raised a mound  
 of earth 4 1/2 ft - in diam + 2 ft -  
 high for 1/4 Sec ev

60.00

Deposited a marked Stone set -  
a Mesquite post - 4 ft - long  
2 in square 12 in, in earth

## Colorado River, Meridiano

Chemin

marked  $\frac{1}{16}$  on W. Side dug pits  
 E. & W. 18 in Square 12 in deep  
 raised a mound of earth  $\frac{1}{2}$   
 ft in diam + 2 ft high  
 for  $\frac{1}{16}$  Sec 20

80.00

Deposited a marked stone, set a  
 Mesquite post  $\frac{1}{2}$  ft long, 4 in.  
 Square 12 in, in earth dug 4.  
 pits dr. E. + dr. W. + S. E. + S. W. 18 in  
 Square, 12 in deep raised a mound  
 of earth  $\frac{1}{2}$  ft in diam +  $\frac{1}{2}$  ft  
 high for cor to Secs. 25-30 + 31 + 36.

<sup>the post</sup>  
 marked  $\equiv$  on N<sub>3</sub> - on S; R 1, E,  
 Sec 30 on dr. E; Sec 31 on S, E;  
 F. 2. dr. Sec 36 on S, W; Sec. 25.  
 R 1 W; on dr. W. Land line, soil  
 1<sup>st</sup> rate, Mesquite + Corosato

## Colorado River Mounds

Chambers

N between Sections 25 + 30

N 1/4, E.

20.00

Deposited a marked Stone Set a Mesquite post-4 ft long 2 in square 12 in. in earth marked 1/16 on W. Side, dug pits E + W, 18 in. Square 12 in. deep, raised a mound of Earth 4 1/2 ft in diam + 2 ft high for 1/16 Sec. cor.

40.00

Deposited a marked Stone Set a Mesquite post-4 ft long 2 in square 12 in. in earth marked 1/4 on W. Side, dug pits E + W, 18 in square 12 in deep, raised a mound of earth, 4 1/2 ft. in diam + 2 ft high for 1/4. See cor

44.40

60.00

road. bears, cr. E. + S. W.  
Deposited a marked Stone Set a Mesquite post-4 ft long 2 in. square 12 in. in earth marked 1/16 on W. Side, dug pits E + W,

## Colorado River, Mendocino

Mendocino

18 in. Square 12 in. deep, raised  
a mound of earth  $4\frac{1}{2}$  ft in diam  
& 2 ft high for 1/6 Sec cor.

8000

Departed a marked Stone at a  
Mesquite post  $4\frac{1}{2}$  ft long 4 in  
Square 12 in. in earth, dug 4 pits  
N, E, & N, W, & S, E, & S, W 18 in

Square 12 in deep raised a  
mound of earth  $4\frac{1}{2}$  ft in diam  
&  $2\frac{1}{2}$  ft high for Cor to Secs  
19 + 24 - 25 + 30. <sup>The post</sup> Marked  $\equiv$  on N, = on  
S; R. 1. E. Sec 19 on N, E. Sec 30 on S, E.  
T. 2. on Sec 25 on S, W. Sec 24  
R. 1. W. on N, W. Land 1<sup>st</sup> place  
bottom, Mesquite & Willow



## Colorado, Rio Grande

Cohens

At Petrum Sections 19 &amp; 24

Va 140 E,

20,00

Deposited a marked Stone set a  
Mesquite post-4 ft long 2 in Square  
12 in. in earth marked  $\frac{1}{16}$  in W. Side  
dug pits E & W, 18 in. Square 12 in  
deep, raised a mound of earth  $4\frac{1}{2}$   
ft in diam + 2 ft high for  $\frac{1}{16}$  sec. en

40,00

Deposited a marked Stone set a  
Mesquite post-4 ft long 2 in  
Square 12 in in earth marked  
 $\frac{1}{4}$  in W. Side dug pits E & W,  
18 in. Square 12 in deep, raised  
a mound of earth  $4\frac{1}{2}$  ft in  
diam + 2 ft high for  $\frac{1}{4}$  sec. en

60,00

Deposited a marked Stone  
set a Mesquite post-4 ft long  
2 in Square 12 in. in earth marked  
 $\frac{1}{16}$  in W. Side dug pits E & W,  
18 in. Square 12 in deep.

# Colorado River Meridian

Mon

8400

raised a mound of Earth  $4\frac{1}{2}$  ft in diam + 2 ft high for  $\frac{1}{16}$  Sec. cor.  
 Set a Granite Stone  $12 \times 10 \times 5$  in  
 a mound of Stone marked  $\equiv$  on N.  
 $\equiv$  on S. sides for cor to Secs 13 + 18 + 19 +  
 24. Low level of the Sandy 2<sup>d</sup> rule  
 Mesquite & Willow

or between, Sections 13 + 18

va.  $14^{\circ}$  E.

2400

Deposited a marked Stone Set  
 a Mesquite post 4 ft long 2 in  
 square 12 in. in earth marked  $\frac{1}{16}$   
 on N. side dug pits E. + W. 18 in square  
 12 in. deep. raised a mound of  
 Earth  $4\frac{1}{2}$  ft in diam + 2 ft high  
 for  $\frac{1}{16}$  Sec. cor.

4000

Deposited a marked Stone Set a  
 Mesquite post 4 ft long 2 in.

# Colorado River Meridian

Cham

60.00

Square 12 in. in earth. marked  
 1/4 in N. side dug pits E + W,  
 18 in square, 12 in. deep, raised  
 a mound of earth 4 1/2 ft in  
 diam + 2 ft high for 1/4 sec. en.

Deposited a marked Stone  
 Set a Willow post 4 ft long  
 2 in square, 12 in. in earth marked  
 1/16 in N. side dug pits E + W 18 in  
 square, 12 in. deep, raised a  
 mound of earth 4 1/2 ft in  
 diam + 2 ft high for 1/16 sec. en.

80.00

Deposited a marked Stone  
 Set a Mesquite post 4 1/2 ft  
 long 4 in square 12 in. in  
 earth dug 4 pits, N. E. + N. W,  
 S. E. + S. W, 18 in square 12 in.  
 deep raised a mound of earth  
 4 1/2 ft in diam + 2 1/2 ft high

for 1/16 to pits 7-12 + 13 + 18 <sup>The post</sup> marked

# Colorado River Meridian

Cham's

= on N,  $\equiv$  on S. R. 1, E. Sec 7 on  
 cr. E. S. 18 on S. E. T. 2, N. Sec 13 on  
 S. W. Sec. 12. R 1, W. on cr. W.  
 Land land over, sandy 1<sup>st</sup> gate  
 Mesquite + arrowweed

Dr. Between Sections 7 + 12

N 14° E.

7,00 7:00 Irrigation Canal 20, LKs  
 wide Course S. W.

8:40 Center Field : Bears on cr. E,  
 + S. W.

12:40 Leave the same

20,00 Deposited a marked stone  
 set - a Mesquite post - 4 ft long  
 2 in Square 12 in in length  
 marked 1/16 on W. Side dug pits  
 N + S. 18 in Square 12 in deep.  
 raised a mound of earth 4 1/2 ft

## Colorado, Rio. Mendocino.

Census

40,00

in diam + 2 ft high, for  $\frac{1}{16}$  Sec. cor.  
 Deposited a marked Stone Set a  
 Mesquite post-4 ft long 2 in Square  
 12 in. in earth marked  $\frac{1}{4}$  on N.  
 Side dug pits E + W, 18 in Square  
 12 in. deep, raised a mound  
 of earth  $\frac{1}{2}$  ft. in diam + 2 ft  
 high for  $\frac{1}{4}$  Sec Cor.

60,00

Deposited a marked Stone  
 Set a Mesquite post-4 ft long  
 2 in Square 12 in. in earth  
 marked  $\frac{1}{16}$  on W. Side. dug pits  
 E + W, 18 in. Square 12 in. deep,  
 raised a mound of earth  $\frac{1}{2}$  ft  
 in diam + 2 ft high for  $\frac{1}{16}$  Sec. cor.

80,00

Deposited a marked Stone, Set a  
 Mesquite post- $4\frac{1}{2}$  ft long  
 4 in Square 12 in. in earth  
 dug 4 pits N.E. + N.W, S.E. + S.W,  
 18 in Square 12 in deep raised a

## Colorado River Monument

Main

mound of earth  $4\frac{1}{2}$  ft in diam +  
 2 ft high for cor to Secs 1 + 6 + 7 + 12  
 The <sup>first</sup> marked - on N.  $\equiv$  on S. R. 1, E. Sec,  
 6, on N. E. Sec. 7, on S. E. T. 2, or,  
 Sec 12, on S. W. Sec, 1, R. 1, W. on  
 N. W. Land line Soil, Sandy  
 1<sup>st</sup> rate. Mesquite + Arrowweed

N. between Sections 14 &amp; 6

N. 14, E.

20.00

Dug out a marked stone, set  
 a Mesquite post 4 ft long, 2 in  
 square 12 in. in earth marked  
 $\frac{1}{16}$  on N. Side, dug pits E. & W.  
 18 in square 12 in deep, raised  
 a mound of earth  $4\frac{1}{2}$  ft in  
 diam + 2 ft high for  $\frac{1}{16}$  Sec  
 Cor, from which, Cor. the  
 Flagpole at Agency bears -

## Colorado River Meridian

Claims

S. 41° 48' E.

40,00

Deposited a marked Stone Set on Mesquite post 4 ft long 2 in square, 12 in in earth marked  $\frac{1}{4}$  on W. Side, dug pits E & W, 18 in square 12 in deep raised a mound of earth  $\frac{1}{2}$  ft in diam + 2 ft high for  $\frac{1}{4}$  Sec. cor.

48,15

Bank of Colorado River, Course S.S.W. about 30,00 chs wide, Deposited a marked Stone Set a Willow post 7 ft long 4 in square  $2\frac{1}{2}$  ft in earth dug pits E & W, 18 in square 12 in deep, raised a mound of earth  $\frac{1}{2}$  ft in diam + 2 ft high, for the cor. 16, True Sec. 1 + 6, <sup>the post</sup> marked N, C, on S. Side T. 1. N. R. 1. W. Sec. 1, on the W.

# Colorado River Meridian

Merid

and, R. 1, E. Sec. 6, on, T. 10, E.  
 Monument Peak in California  
 Years. N. 18° 50', E.  
 Land Co. Sec 1<sup>st</sup> rate.  
 Arrowweed, Willow Cottonwood +  
 Mesquite. Nov. 27<sup>th</sup> 1875

## General Description.

The line runs from the Indian  
 Monument, about five miles  
 through the mountains, and  
 Sand Hills; and the land, is  
 of little or no value. North it  
 strikes into the Colorado River  
 bottom, where the soil is 1<sup>st</sup> rate.  
 The mountains + Sand hills are  
 entirely, bare of vegetation. In  
 the bottom, is Mesquite and  
 Arrowweed, with willows near  
 the River. The place selected for



The location of the initial movement was selected, so as to enable me to extend the line over the land, directed to be surveyed by the Indian Agent, with as little expense as possible, the extent of the surveys being limited by the appropriation.

## Base Line &amp; Boundary of R. 1, W.

Chain

From the Initial Monument  
 Iron on the South Boundary  
 of T. 1, N. R. 1, W.

West on S. boundary of Section 36  
 $104^{\circ} E$ ,

20,00 Set a Granite Stone,  $26 \times 12 \times 10$ , in  
 a mound of Stones, marked  $\frac{1}{16}$   
 on N. side, for  $\frac{1}{16}$  Sec. cor.

40,00 Set a Granite Stone  $16 \times 10 \times 6$   
 in a mound of Stones marked  $\frac{1}{4}$   
 on N. side for  $\frac{1}{4}$  Sec. cor.

40,60 Leave Monument, bears N. and S.

60,00 Set a Granite Stone  $14 \times 10 \times 6$   
 in a mound of Stones marked  
 $\frac{1}{16}$  on N. side for  $\frac{1}{16}$  Sec. cor.

80,00 Set a Granite Stone  $14 \times 8 \times 8$   
 in a mound of Stones, marked  
 S. C. on South and - E +  $\equiv$  W.  
 for Cor to Secs 35 + 36, Surfaces  
 broken + rocky Soil 3<sup>rd</sup> & 4<sup>th</sup>,

## Colmado River Mendocino

Census

West on S. Foundation of Section 35  
Var 14° E.

20,00

Set a Granite Stone 12 x 10 x 6, in  
a mound of Stones marked 1/16 on  
N. Side for 1/16 Sec, cor.

40,00

Set a Granite Stone 13 x 12 x 7  
in a mound of Stones, marked  
1/4 on, N. Side for 1/4 Sec, cor.

47,00

Arroya corner N.W. + W.

60,00

Set a Granite Stone 12 x 8 x 6,  
in a mound of Stones marked  
1/16 on, N. Side for 1/16 Sec, cor.

80,00

Set a Granite Stone 12 x 8 x 7,  
in a mound of Stones marked  
S.C. on South end = C + ≡ W.  
for Cor. to, Secs. 34, + 35.Land broken rocky 3<sup>d</sup> date

## Base Line, S. Boundary of R. 1. W.

Census

	Met on S. Boundary of Section 34 No 14, E,
20.00	Set a Granite Stone 12x8x8 in a mound of Stones marked 1/16 on N. Side for 1/16 Sec, Cor,
36.20	Leave Arroya, Course N.W.
40.00	Set a Granite Stone 17x8x8 in a mound of Stones marked 1/4 on Cr. Side for 1/4 Sec, Cor,
50.00	Set a Granite Stone 16x14x4, in a mound of Stones marked 1/16 on N. Side for 1/16 Sec, Cor,
12.50	Leave hills N. E + S.W.
77.50	Road Course N.W. + S.E
80.00	Set a Green Stone 16x8x8 in a mound of Stones marked S.C. on South and $\equiv$ E + $\equiv$ W, for Cor to Secs 33 + 34, 1 <sup>st</sup> - 62 Chs broken & Stony 3 <sup>d</sup> rule, balance Level 1 <sup>st</sup> rule

## Colorado River Mendocino

Mines

- Nest on S. boundary of Section 33  
 Va 14° E.
- 20.00 Deposited a marked stone set a  
 willow post 4 ft long 2 in square  
 12 in. in diam. Marked  $\frac{1}{16}$  on N,  
 side dug pits, N+S, 18 in square,  
 12 in deep, raised a mound of  
 earth  $\frac{1}{2}$  ft in diam + 2 ft high  
 for  $\frac{1}{16}$  Sec. cor.
- 21.00 Arroyo, S, 40 Lks wide
- 30.00 E. side of dry pond corner S.W. + N.E.  
 2 chs wide 12 chs long
- 40.00 Deposited a marked stone set a  
 willow post 4 ft long 2 in square  
 12 in. in diam Marked  $\frac{1}{4}$  on N, side  
 dug pits N+S, 18 in square 12 in  
 deep, raised a mound of earth  $\frac{1}{2}$   
 ft. in diam. + 2 ft high for  
 $\frac{1}{4}$  Sec. cor.

## Base Line, S Boundary, of R. 1, W.

Mounds

60.00

Deposited a marked Stone set a  
Willow post - 4 ft long 2 in Square  
12 in. in Earth marked  $\frac{1}{16}$  on N.  
Side dug pits N. + S. 18 in Square  
12 in deep, raised a mound of  
Earth  $4\frac{1}{2}$  ft in diam + 2 ft high  
for  $\frac{1}{16}$  Sec cor.

80.00

Set a Green Stone  $14 \times 12 \times 4$ , in  
a mound of Stones, marked  
S.C. in Earth, and  $\equiv$  E + =. W.  
for Cor to Secs 32 + 33, Sand  
rolling. - Sandy bottom 2<sup>d</sup> rail  
Mesquite, Arrowweed, Cottonwood  
& Willow

## Colorado, River Meridian

Miami

Nest on S. boundary of Section 32  
 Var 14° E.

20,00

Deposited a marked Stone. Set a  
 Mesquite post 4 ft long 2 in Square  
 12 in, in earth marked  $\frac{1}{16}$  in, N.  
 Side dug pit, N + S, 18 in Square  
 12 in, deep, raised a mound  
 of earth  $4\frac{1}{2}$  ft in diam + 2 ft-  
 high for  $\frac{1}{16}$  Sec. cor.

2550

Slough 50. Lks, wide Course, S.

40,00

Deposited a marked Stone.  
 Set a Mesquite, post 4 ft long  
 2 in, Square 12 in, in earth marked  
 $\frac{1}{4}$  in, N, Side dug pit, N + S, 18 in  
 Square, 12 in, deep, raised a  
 mound of earth  $4\frac{1}{2}$  ft in diam  
 + 2 ft-high for  $\frac{1}{4}$  Sec. cor.

60,00

Deposited a marked Stone set,  
 a Willow post 4 ft long 2, in  
 Square 12 in, in earth, marked

## Base Line &amp; Boundary of R. L. M.

Claims

1/16 on N. Side Aug. pits N + S;  
18 in. Square 12 in. deep, raised  
a mound of earth 4 1/2 ft in diam  
+ 2 ft high for 1/16 sec. cor.

80.00

Set a Green Stone 14 x 12 + 3 1/2 in a  
mound of Stone marked S.C. on  
South end  $\equiv$  E + - W for cor. to  
Secs 31 + 32, Land low, Sandy bottom  
1<sup>st</sup> rate, Mesquite, Arrow weed, Cotton-  
wood + Willow

West on S. Boundary of Section 31  
On 14° E.

200.00

Discovered a marked Stone. Set a  
Willow post 4 ft long 2 in Square  
12 in. in diam marked 1/16 on N.  
Side. Aug pits N + S, 18 in Square  
12 in deep raised a mound  
of earth 4 1/2 ft in diam + 2 ft



## Colorado River Meridian

Chains

2735  
40.00

High for  $1/16$  sec. cor  
 Arrive 40 Lks wide Course, S,  
 Deposited a marked Stone, set  
 a Willow post, 4 ft long 2 in.  
 Square 12 in. in earth marked  
 $1/4$  in. N. Side, dug pits N+S,  
 18 in. Square 12 in. deep, raised  
 a mound of earth  $1/2$  ft. in.  
 diam + 2 ft high for  $1/4$  sec. cor.

60.00

Deposited a marked Stone, set,  
 a Willow post - 4 ft long 2 in.  
 Square 12 in. in earth marked  
 $1/16$  in. N. Side dug pits N+S,  
 18 in. Square 12 in deep, raised  
 a mound of earth  $1/2$  ft. in.  
 diam + 2 ft high for  $1/16$  sec. cor.

80.00

Set a Green Stone  $15 \times 10 \times 5$   
 in a mound of Stones marked  
 $\equiv$  on N,  $\equiv$  on E,  $\equiv$  on W sides for cor  
 10. T's, 1. N. R, 1. W, T, 1. N, R, 2, W

Base Line, S. Boundary of B. 1. W.

Chino

Land level bottom, Soil sandy 1<sup>st</sup> rule  
Mesquite, Cottonwood, & Willow  
Nov 28<sup>th</sup> 1875

~~West on S boundary of Section 31~~  
July 11, 81

~~2007 Right Bank of the Colorado River  
A sand bar, unsuitable for wharfing  
No. 100~~

~~4947 District West Boundary, S. B. 1. B.  
2 Chs. N. of 23 miles on~~

Colnado, River Meridiano

Colnado

# Base Line, S Boundary of R. 2, W.

Chain

Met-on S. Boundary of Section 36  
N 14° E.

510 Train Corner N + E.

465 Arroya Corner W.

1650 Laguna W. Bank Corner N + S, 200 Chs  
wide offset 3.00 Chs North thence west-

2000 back to line. Deposited a marked  
Stone Set-a Willow post-4 ft long  
2 in. Square 12 in in earth marked  
1/10 on N. Side dug pits N + S. 18 in  
Square 12 in deep, raised a  
Mound of earth 1/2 ft in diam  
& 2 ft high for 1/10 sec. cor.

4000 Deposited a marked Stone Set-a  
Willow post-4 ft long 2 in Square  
12 in in earth marked 1/4 on  
N. Side dug pits N + S. 18 in  
Square 12 in deep, raised a  
Mound of earth 1/2 ft in  
diam & 2 ft high for 1/4 sec. cor.

## Colorado River Meridian

Main

60.00

Deposit a marked Stone, set a  
Newgate post 4 ft long 2 in Square  
12 in. in. Earth marked  $\frac{1}{16}$  on N. side  
dig pits N + S, 18 in Square 12 in  
deep, raised a mound of earth  
4 1/2 ft in diam + 2 ft high for  
 $\frac{1}{16}$  Sec. cor.

76.00

Arroyo Course met

80.00

Set a White Lava 18 + 8 + 5 in. w.  
Mound of Stones, marked S. C.  
on South, and  $\equiv$  E + - W for Cor.  
to Secs. 35 + 36, Lava rolling, Soil  
1 $\frac{1}{2}$  rods, Newgate, Cottonwood, + Meadow

## Base Line, S. Boundary, R. 2, W

Lekani

Post on S. boundary of Section 35

Var. E

- 20.00 Deposited a marked Stone set a Willow post 4 ft long 2 in Square 12 in, in earth. Marked  $\frac{1}{16}$  on, N. side dug pits N+S. 18 in Square 12 in deep. raised a mound of earth  $4\frac{1}{2}$  ft in diam + 2 ft high for  $\frac{1}{16}$  Sec. cor.
- 40.00 Deposited a marked Stone, set a Willow post 4 ft long 2 in Square 12 in, in earth marked  $\frac{1}{4}$  on N. Side, dug pits N+S 18. in. Square 12 in, deep. raised a mound of earth  $4\frac{1}{2}$  ft in diam + 2 ft high for  $\frac{1}{4}$  Sec cor
- 44.00 S. cane Mesquite Post, Corner E. & W. + enter Sprainie
- 60.00 Deposited a marked Stone, set a Mesquite post 4 ft long 2 in Square 12 in, in earth. Marked

## Colorado, Riv. Meridian

L. Harris

1/16 on, N. Side dug pits N+S, 18, in  
Square 12 in deep, raised a mound  
of earth 4 1/2 ft in diam + 2 ft  
high for 1/16 Sec, cor,

8000 Set a Green Stone 16 x 8 x 8 in a  
mound of stones marked S.C. on  
South end  $\equiv$  E + =. W. for cor. to,  
Secs. 34, + 35, Land land soil 1<sup>st</sup>  
Val. Mesquite Cottonwood + willow  
+ arrowweed

West on, S boundary of Section 34  
Va. 14, ° E,

2000 Deposited a marked stone bet-co  
Mesquite post 4 ft long 2 in square  
12, in, in earth marked 1/16 on, N,  
Side dug pits N, + S 18, in, Square  
12, in, deep, raised a mound of  
earth 4 1/2 ft in diam + 2 ft high

## Base Line S. Bomedang R. 2, W.

Chamo

- for 1/16 Sec. cor
- 49.00 Deposited a marked Stone Set, a Mesquite post 4 ft long 2 in square 12 in in earth marked 1/4 on N. Side dug pits N + S. 18 in square 12 in deep raised a mound of earth 4 1/2 ft in diam + 2 ft high for 1/4 Sec. cor.
- 60.00 Deposited a marked Stone Set a Willow post 4 ft long 2 in square 12 in in earth marked 1/16 on N. Side dug pits N + S. 18 in square 12 in deep raised a mound of earth 4 1/2 ft in diam + 2 ft high for 1/16 Sec. cor.
- 62.50 Small Laguna N. of line 1 ch wide 18 chs long
- 80.00 Set a Specular Lava 14 x 8 x 8 in a mound of Stones marked b. c. on



## Colorado River Meridian

Census

South end  $\equiv$  on E +  $\equiv$  on W, for en  
to Secs. 33 + 34, Land line side  
1<sup>st</sup> val. Mesquite, Cottonwood willow  
+ Arrowweed.

Pest on S. Boundary of Section 33  
Va. 14<sup>th</sup> E.

20,00

Deposited a marked stone set a  
Cottonwood post 4 ft long 2 in square  
12 in in, earth marked  $\frac{1}{16}$  on N,  
Side dug pits N + S, 18 in square 12  
in deep raised a mound of earth  
 $4\frac{1}{2}$  ft in diam + 2 ft high for  
 $\frac{1}{16}$  Sec, en.

40,00

Deposited a marked stone set a  
Mesquite post 4 ft long 2 in square  
12 in in, earth marked  $\frac{1}{4}$  on N,  
Side dug pits N + S 18 in square  
12 in deep, raised a mound of earth

## Base, Line, &amp; Boundary R. 2, W.

Chains

- 60,00  $4\frac{1}{2}$  ft in diam + 2 ft high  
for  $\frac{1}{4}$  sec. cor.
- Deposited a marked Stone Set,  
a Willow post 4 ft long  
2 in Square, 12 in. in diam. Marked  
 $\frac{1}{16}$  on N. Side dug pits N. + S. 18 in  
Square 12 in deep, raised a  
mound of earth  $4\frac{1}{2}$  ft in diam  
+ 2 ft high for  $\frac{1}{16}$  sec. cor.
- 76,20 Leave open ground + enter heavy  
Willow brush Course E. + W.
- 80,00 Set a Lava rock 16 x 10 x 5 in a  
mound of Stones Marked S.C. on  
South end = E +  $\equiv$  on W. for cor  
to Secs 32 + 33. Land level raise  
1<sup>st</sup> rate bottom, Scatterin, Mesquite  
Cottonwood + Willow

## Colorado River Mendocino

Mans

Mist on S boundary of Section 32

74.14.06

20.00

Deposited a marked stone set a Mesquite post-4 ft long 2 in Square 12 in in earth marked  $\frac{1}{16}$  on N. Side, dug pits N.+S. 18 in Square 12 in deep, raised a mound of earth  $4\frac{1}{2}$  ft in diam + 2 ft high for  $\frac{1}{16}$  Sec. Cor.

40.00

Deposited a marked stone set a Mesquite post-4 ft long 2 in Square 12 in in earth marked  $\frac{1}{4}$  on N. Side dug pits N.+S. 18 in Square 12 in deep, raised a mound of earth  $4\frac{1}{2}$  ft in diam + 2 ft high for  $\frac{1}{4}$  Sec. Cor.

60.00

Bank of Colorado River Course South about 20.00 Chs wide, deep Swift Current, Deposited a Charred Stick, Set a Willow post-4 ft long

Base. Lino. S. Boundary, R. 2, W.

Columns

10 m. in earth, dug pits N + S. 18. in square, 12 in deep, raised a mound of earth 3 ft high 7 ft in diam marked N.C. W. Sec. 32. N. for ev to true sec 32.

Set a flag on opposite side of the river. Measured South 8.00 cns. to point from which flag bears N. 140 2' W. Cotang.  $4,000 \times 636 \times 8 = \frac{32.00}{400}$  distance, across the river

80.00

Place for Cor. in rivin.  
Land level, 1<sup>st</sup> rate bottom, Fumbr.  
Cottonwood, Willows Mesquite + Arrow-  
weed

West-on, S. Boundary of Section 31

12  
2007

Right Bank of Colorado. Rivin. N 140 E.

## Colorado River Meridian.

Chambers

- 20.00 No post or cor. set.  
~~a Sand Bar, unsuitable for Estab-  
 lishing M.C.~~
- 4000 Place, on a Sand Bar, Impracticable  
 to Establish it
- 49.47 Inexact west boundary C.R. 1, R.  
 2,00 Chs. N. of 23" mile cor.  
 Impracticable to establish C.C.  
 as it falls on a shifting Sand bar  
 This line lies entirely in the  
 river and on the Sand bar  
 Nov. 29, 1878

## General Description

The base line west from the  
 Initial Monument passes for  
 the most part through the  
 bottom land of the Colorado  
 River. The soil is very good  
 for a agricultural purposes  
 The timber is all small  
 consisting of *Alnus sp.* + willow

## Base Line S, Boundary, of, R. 1, E

Chains

Base Line E. E from Initial Monument  
E on a true line on S boundary of  
Section 31

- On 14<sup>th</sup> E.
- 20,00 Set a Granite Stone 20x10x8 in a  
mound of Stones marked 1/16 on  
N. side for 1/16 sec. cor
- 40,00 Set a Granite Stone 18x18x10, in a  
mound of Stones marked 1/4 on  
N. side for 1/4 sec. cor.
- 60,00 Set a Granite Stone 16x14x4. in  
a mound of Stones marked 1/16  
on N. side for 1/16. sec. cor.
- 79,00 Leave Mountain Corner N. E + S. W;
- 8500 Set a Quartz 14x12x3 in a mound  
of Stones marked, S. C. on S. an  
≡ on E + - on W. side for Cor  
1/5 Secs. 31 + 32. Land Broken +  
Rocky 3<sup>rd</sup> rail

## Colorado River Meridian

Cham's

E on a true line on S. boundary of  
Section 32.

On  $14^{\circ}$  E.

20.00

Set a Granite Stone  $16 \times 8 \times 4$ , in a  
mound of stones marked  $\frac{1}{16}$  on N.  
Side for  $\frac{1}{16}$  Sec. cor.

40.00

Set a Granite Stone  $18 \times 10 \times 6$   
in a mound of stones marked  
 $\frac{1}{4}$  on N. Side for  $\frac{1}{4}$  Sec. cor.

60.00

Set a Granite Stone  $14 \times 12 \times 6$   
in a mound of stones marked  
 $\frac{1}{16}$  on N. Side, for  $\frac{1}{16}$  Sec. cor.

80.00

Set a Granite Stone  $14 \times 10 \times 8$ ,  
in a mound of stones marked  
S.C. on S. and  $\equiv$  on E + = on W. Side  
for cor to Secs 32 + 33, Land Merit  
& Dandy 3, rate

## Base Line S. Boundary of R 1.

Chamis

E, on a true line on S. boundary  
of Section 33.

Va 14° E.

20.00

Deposited a marked Stone set a  
Mesquite Post - 4 ft long 2 in Square  
12 in in earth marked 1/16 on N. Side  
 dug pits N + S. 18 in. Square 12 in deep.  
raised a mound of earth 4 1/2 ft in  
diam. + 2 ft high for 1/16 sec. cor.

29.06

Intersect. E. boundary, S. 18° 15' W.  
9.22. Chs. distant from the 27<sup>th</sup> mile  
Cor. + set a Granite Stone 14 x 12 x 8  
10 in. in earth. marked C.C. on W.  
Side for Closing Corner.  
Land low, Soil sandy 2<sup>d</sup> rate  
Cereals bushes & Mesquite

General Description  
The Base Line East from the  
Initial Monument. Passes



E. Colorado, River Meridian

Chambers

over the small mountains  
on which the monument is  
located, leaving it on the  
first view. Thence to the  
East-Boundary, over a  
rolling, sandy country,  
barren and destitute of  
water, and timber, except  
a scanty growth of Mesquite  
and Creosote bushes.

Nov. 29, 1875

## U. S. Surveyor General's Office,

TUCSON, ARIZONA,

May 12, 1876.

The foregoing Field Notes of the Survey of the

Colorado River

Base and Meridian on  
Colorado River Indian Reserve  
Arizona

~~Of the Gila and Salt River Base and Meridian, Arizona,~~ execu-  
ted by Chaudler Robbins

Deputy Surveyor, under his contract of the 26<sup>th</sup>  
day of May, 1875, having been

critically examined and the necessary corrections and explana-  
tions made, the said Field Notes and the surveys they describe  
are hereby approved.

John Mason  
Surveyor General.