

EAST & NORTH
BOUNDARIES

TRE S. R. 20 E

CONTRACT NO 87

PHILIP CONTZEN
U. S. DEP. SUR.

1576

1576 BOOK 1576

4-671

FIELD NOTES
GENERAL LAND OFFICE.

1576

Field Notes 1576 1

of the survey of the
East and North Boundaries

of

Township No. 22 South

Range No. 20 East

of the

Gila and Salt River Basins and Mexican

In the

Territory of Arizona

As surveyed by

Philip Conzen

U. S. Deputy Surveyor

Under his contract No. 87

Dated August 24, 1901.

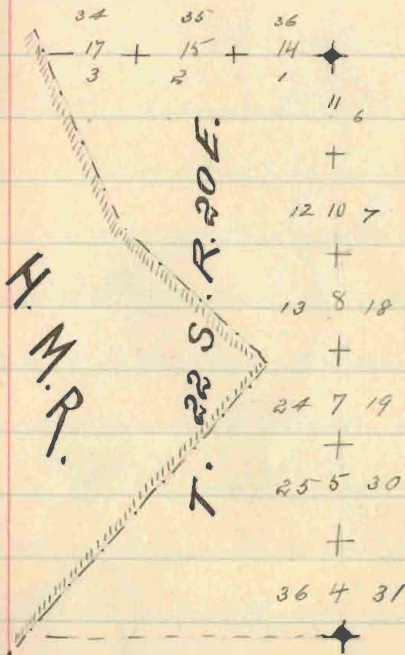
Survey commenced October 21, 1901.

Survey completed October 22, 1901.

Book No. 1576

BOOK 1576

INDEX



East
~~West~~ Bdry
North "

Page 4
" 14

East boundary of Sec 22 S, R 20 E.
 Chain

Survey commenced October 21, 1901,
 and executed with a W. & L. E. Searley
 light mountain transit No. 6407,
 with solar attachment, as heretofore
 described.

At 8^h 30^m a.m., l.m.t., I set off 31° 28'
 on the lat arc; 10° 36' S on the decl
 arc and determine a true meridian
 with the solar at the cor of Sec
 22 and 23 S, R 21 and 20 E, as heretofore
 described.

Plum Tree Dam

North on a true line along the E
 bdy of Sec 22 S, R 20 E, bet sec
 31 and 36.

Over level land.

4 0 00 Set a granite stone, 18 x 12 x 6 ins, 12
 ins in the ground, for $\frac{1}{4}$ sec cor,
 marked $\frac{1}{4}$ 36 on W and 31 on E

East boundary of Sec 1, B 20 E - Continued
Chain

faers, and raise a mound of stone
2 ft base, 1 1/2 ft high, N of cor.
Site impracticable.

5000 Wash, 40 lbs wide, course S
easterly, thence N easterly.

8000 Set a sandstone 18 x 10 x 8 ins, 12
ins in the ground, for cor of
secs 25, 30, 31 and 36, marked
with 1 notch on S and 5 notches
on N edges, and raise a mound
of stone 2 ft base, 1 1/2 ft high,
N of cor. Site impracticable.

Land, level.

Soil, gravelly; 2 sand & 2 water.

Timber, scattering oak.

North on a true line bet secs
25 and 30.

Over level land.

East boundary of T22S, R20E - continued.

Chains

- .79 Wash, 10 lbs wide, course N easterly
- 13.75 Junction of roads from Rand S and
NE and SW.
- 40.00 Set a red wood post, 3 ft long, 4 ins sq,
with marked stone, 24 ins in the ground
for $\frac{1}{4}$ sec cor, marked $\frac{1}{4}$ S 25 on W
and 30 on E faces; dig pits 18x18x12
ins, N and S of post, 3 ft dist, and
raise a mound of earth $3\frac{1}{2}$ ft base,
 $1\frac{1}{2}$ ft high, W of cor.
- 79.50 Wash 30 lbs wide, course N easterly.
- 80.00 Set a granite stone 18x10x6 ins, 12 ins
in the ground, for cor of sec
19, 24, 25 and 30, marked with 2
notches on S and 4 notches on
N edges, and raise a mound of
stone 2 ft base, $1\frac{1}{2}$ ft high, W
of cor. Pits impracticable.
Land level.

East boundary of Sec 5, R20 E - Continued.

Chain

Soil, gravelly; 2 and 3 rats.
No timber.North on a true line bet
secs 19 and 24.

Over level land.

35 Road, bears S. W. and N. E.

40.00 Set a redwood post, 3 ft long, 4
ins sq, with marked stone, 2.4
ins in the ground, for $\frac{1}{4}$ sec cor,
marked $\frac{1}{4}$ Sec on W. and S. 19 on
E. face; dig pits 18" x 12" ins, round
S of post, 3 ft dia, and raise a
mound of earth 6 ft base, 12 ft
high, W of cor.

69.90 Wash, 60 lbs wide, course N. & S. & E.

75.70 Road, bears N. W. and S. E.

78.00 Enter scattering trees, bears N. E.
and S. W.

East boundary of S 22 S, R 20 E - Centinada.

Chain

80.00

Set a 1/4" diameter post, 3 ft long, 4 ins
apart, with marked stones, 24 ins in
the ground, seven of sses 13, 18, 19 and
24, marked with 3 notches on S
and N edges, dig pits 18x18x12 ins
in each sse, 2 ft apart, and raise
a mound of earth 4 ft base, 2 ft
high, W of each.

Land, level.

Soil, gravelly; 2^d and 3^d rates.

No timber; undergrowth, scattering
trees.

North on a trail line bet sses 13
and 18.

Over level and gently rolling
land.

9.00 Cross treets, bears E and W.

14.00 Enter scattering mesquite and

East boundary of Sec 2 S. R20 E - Continued

Chains

sagebrush, bears NE and SW

4000 Set a redwood post, 3 ft long, 4 ins sq, with marked stone, 24 ins in the ground, for $\frac{1}{4}$ sec cor, marked $\frac{1}{4}$ S 13 on W and S 18 on E faces; dig pits 18x18x12 ins, N and S of post, 3 ft dist, and raise a mound of earth 3 $\frac{1}{2}$ ft base, 1 $\frac{1}{2}$ ft high, W of cor.

8000 Set a redwood post, 3 ft long, 4 ins sq, with marked stone, 24 ins in the ground, for cor of secs 7, 12, 13 and 18, marked Sec 7 S 7 on NE, R21 E, S 18 on SE, S 18 on SW, and R20 E, S 12 on NW faces; with 4 notches on S and 2 notches on N edges; dig pits 18x18x12 ins, in

East boundary of Sec 2, R 20 E - Continued
Chains

each sec, 5 $\frac{1}{2}$ ft dist, and raise a mound of earth 4 ft base, 1 ft high, W of cor.

Land level and gently rolling.

Soil, gravelly; 2 sand & 2 silt.

No timber. Undergrowth, vesota, mesquite, sagebrush and yucca.

North on a true line bet secs 7 and 12.

Over gently rolling land.

1.00 Bran mesquite and yucca.

4.000 Set a redwood post, 3 ft long, 4 ins sq, with marked stone, 2 4 ins in the ground, for $\frac{1}{4}$ sec cor, marked $\frac{1}{4}$ S 12 on W and S 7 on E faces, dig pits 18x18x12 ins, N and S of post, 3 ft dist, and raise a mound of earth 3 $\frac{1}{2}$ base, $\frac{1}{2}$ ft high, W

East boundary of Sec 5, R20 E - Continued.

Chain

of cor.

8.000

Set a redwood post, 3 ft long, 4
 ins sq, with marked stone, 4 ins
 in the ground, for cor of sec 1, 6,
 7 and 12 marked.

Sec 5, S 6 on N.E.

R 21 E, S 7 on S.E.

S 12 on S.W. and

R 20 E, S 1 on W.W. faces, with 3
 notches on S and 1 notch on N
 edges; dig pits 18 x 18 x 12 ins in
 each sec, 50 ft dist, and raise
 a mound of earth 4 ft base, 2
 ft high; W of cor.

Land, gently rolling.

Soil, gravelly, 2^d and 3^d rate.

No timber, undergrowth, mes-
 quite and yucca.

North on true line bet sec 1 and 6.

East boundary of Sec 1, Res E - continued

Chains

Over rolling land.

16.00 Wash, 20 lbs wide, course N & astraly.

4.000 Set a sandstone 18x8x6 ins, 12 ins in
the ground, for $\frac{1}{4}$ sec cor, marked
 $\frac{1}{4}$ on W and 6 on E faces. dig
pits 18x18x12 ins, N and S of ^{stone} ~~stone~~,
8 ft dist, and raise a mound of
earth 3 $\frac{1}{2}$ ft base, 1 $\frac{1}{2}$ ft high, W
of cor.

80.00

Set a sandstone 18x14x6 ins, 12 ins
in the ground, for cor of Sps 22 & 21
~~and~~ S, Res 20 and 21 E, marked
with 6 notches on each edge; dig
pits 24x24x12 ins, on each line,
N, E and W 4 ft, and S of stone,
8 ft dist and raise a mound of
earth 5 ft base, 2 $\frac{1}{2}$ ft high,
S of cor.

Land, rolling.

East boundary of Sec 2 S. R. 21 E. - concluded.

Chain.

Soil, gravelly; 2^d and 3^d cuts.
No timber.

October 27, 1901.

General Description

Sec 2 S, R 21 E, is level and rolling and covered with rich and nutritious grasses. There is considerable mesquite and other undergrowth in the eastern portion of the township.

Philip Couzgen

U. S. Deputy Surveyor.

North boundary of Sec 21, R 20 E.

Chains

October 22, 1901. Commence at the cor of Sec 21 and 22 S, R 20 and 21 E, as heretofore described.

At 7^h 45^{min} a.m., l.m.t., I set off 31° 33' on the lat arc, 10° 57' S on the decl arc and determine a true meridian with the solar.

Plencer Corn

West on a true line bet secs 1 and 36.

Over level land.

4.0.00

Set a redwood post, 3 ft long, 4 ins sq, with marked stone, 2 1/4 ins in the ground, for $\frac{1}{4}$ sec cor, marked $\frac{1}{4}$ S 36 on N and S, on S face, dig pits 18 x 18 x 12 ins, E and W of post, 3 ft dist, and raise a mound of earth 3 1/2 ft base, 1 1/2 ft high, N of cor.

North boundary of P 22 S, R 20 E - continued
 Chains

8000 Set a iron rod post, 3 ft long, 4
 ins sq, with marked stone, 24
 ins in the ground, for cor of
 sees 1, 2, 35 and 36, marked
 P 21 S, S 36 on NE,
 R 21 E, S 1 on SE,
 P 22 S, S 2 on SW, and
 S 35 on NW faces; with 1 notch
 on E and 5 notches on W edges;
 dig pits 18x18x12 ins, in each
 see, 5 1/2 ft dist, and raise a
 mound of earth 4 ft base, 2 ft
 high, W of cor.

Land, level.

Soil, gravelly; 2 sand & 3 rats.

No timber.

West on a town line bet sees
 2 and 35.

North boundary of S 22 S, R 20 E - continued
 Chassis

- Over level land.
- 30.70 Wash, 60 lbs wide, course 71
 easterly.
- 40.00 Set a railroad post, 3 ft long, 4
 ins sq, with marked stone, 24
 ins in the ground, for $\frac{1}{4}$ sec
 cor, marked $\frac{1}{4}$ S 35 on N and S
 E on S faces; dig pits 18x18x12
 ins, E and W of post, 3 ft dist,
 and raise a mound of earth
 $3\frac{1}{2}$ ft base, 1 $\frac{1}{2}$ ft high, N of cor.
- 80.00 Set a granite stone 18x12x10 ins, 12
 ins in the ground, for cor of secs
 2, 3, 34 and 35, marked with 2
 notches on E and 4 notches on
 W edges; dig pits 18x18x12 ins
 in each sec, 5 $\frac{1}{2}$ ft dist, and raise
 a mound of earth 4 ft base, 2
 ft high; W of cor.

North boundary of Sec 8, B20E-Continued.
Chain

Level, level.

Soil, gravelly; 2^d and 3^d rates.

No timber.

Went on a true line but sees 3
and 34.

Over level land.

- 18.65 Road, bears N westerly and S westerly.
- 34.80 Road, bears N westerly, and S easterly.
- 40.00 Set a redwood post, 3 ft long, 4 ins
sq, with marked stone, 2 1/2 ins in
the ground, for 1/4 sec cor, marked
1/4 S 34 on N and 3 on S faces; dig
pits 18x18x12 ins, E and W of post,
3 ft dist, and raise a mound of
earth 3 1/2 ft base, 1 1/2 ft high, N.
of cor.
- 45.60 Road, bears N westerly and S
westerly.

North boundary of Sec 8 R20 E - Concluded & Closes

Chains

46.40

Road, bears Nwesterly and S easterly.

50.10

Road to Fort Huachuca, bears N and S.

72.77

Intersect E bdy of Huachuca Military Reservation at a point from which cor No. 4 of the reservation bears S 21° 24' E, 122.26 chs dist.

Set a sandstone 18+8+6 ins, 12 ins in the ground, for closing cor of fracl 34 of Sps 21 and 22 S R20 E, marked CC on E, 34 on N, 3 on S and T M R on W faces; and raise a mound of stone 2 ft base, 1 1/2 ft high, E of cor. Pits impracticable. Land, level and gently rolling. Soil, gravelly; 2^d and 3^d rate. No timber.

October 22, 1901.

Philip Contess
U. S. Deputy Surgeon.

Table of
Latitudes, Departures and Closing Errors.

Course	Dist.	Latitude		Departure	
		N.	S.	E.	W.
<u>N. BDY.</u> West	232.77				232.77
<u>W. BDY.</u> D. 21° 34' E.	122.26		113.83	44.61	
D. 43° 56' E.	63.82		46.10	44.03	
East	64.02			64.02	
D. 0° 01' E.	66.85		66.85	.03	
D. 43° 36' E.	14.75		10.17	10.69	
D. 34° 30' W.	197.28		162.58		111.74
East	21.14			21.14	
D. 0° 01' E.	80.00		80.00	.03	
<u>S. BDY.</u> East	160.00			160.00	
<u>E. BDY.</u> North	480.00	480.00			
Congruency					44
		480.00	479.53	344.55	344.95
		479.53			
Error of Latitude	.47				344.55
Error of Departure					40

APPROVAL.

OFFICE OF U. S. SURVEYOR GENERAL,

Tucson, Arizona, Feby. 5, 1902.

The foregoing field notes of survey of
East & North bdy. Tp. 22 S., R. 20 E.

Gila & Salt River Meridian,

executed by Philip Contzen, Dep. Sur.
under his Contract No. 87-dated Aug. 24-1901

having been critically examined, and the
necessary corrections and explanations made,
the said field notes and the surveys they
describe, are hereby approved.

Hugh W. Price

U. S. Surveyor General for Arizona.