

Book "a"

(2)

placements

T. S. R. Co. E.

1580

1580

1580 BOOK 1580

4-671

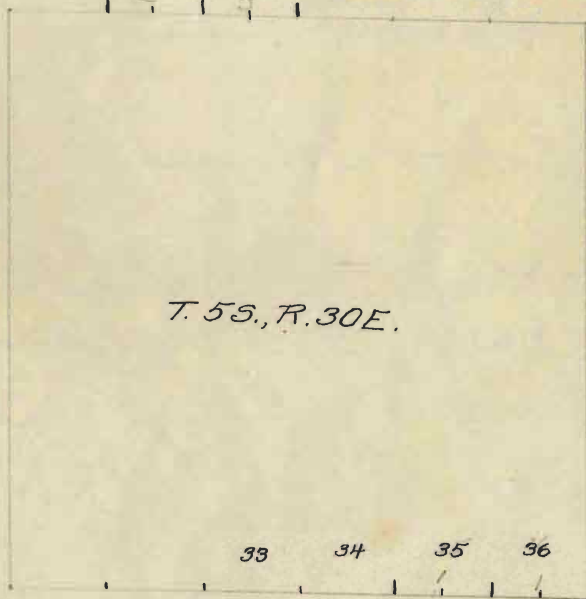
BOOK 1580

FIELD NOTES  
GENERAL LAND OFFICE.

1580

BOOK 1580

31 32 33 34 35 36



33 34 35 36

First Standard Parallel South

South Bdy T. 5 S. R. 30 E.

From cor to T. 5 S R's 30 & 31 E. which is also cor. to sec. 31 & 36 which is a post in mound of stone as marked and described by the surveyor general I run W on 1<sup>st</sup> Stand. Par. and at 40.22 find remains of mound of stone, at 80.41 fall 1 1/2 lks S of cor. to which sec. 35 & 36 which is a post in a mound of stone marked as described by Surveyor General.

W. on Stand. Par. on S bdy of sec. 35; and at 40.25 fall 2 lks N of 1/4 sec cor. to sec. 35 which is a stone in the ground Mound of stone N of cor. which

S. B. 17, 5 S. R. 30, E.

is ~~marked~~<sup>d</sup> ~~and~~<sup>as</sup> described by  
surveyor General and at  
80.43 ~~Subtract~~ fall on cor.  
secs. 34 & 35; a cor. ~~marked~~<sup>d</sup>  
as described by surveyor  
general.

W. Bdy T. 5-S. R. 30 E.

Unable to find cor.  
 to sec 33 & 34 on S. Bdy of  
 T. 4 S. R. 30 E. I go to cor.  
 of Secs. 31 & 32. On S bdy T. 4  
 S. R. 30 E. and run E.  
 at 39.95 fall 47 lks N.  
 of  $\frac{1}{4}$  sec <sup>cor</sup> which is marked  
 as described by surveyor  
 general. E and at 79.90  
 fall 95 lks N. of cor to  
 sec. 32 & 33 a stone marked  
 as described by Surveyor  
 general. True Course of line 589° 19' E  
 From cor to 32 & 33 I run  
 S. 89° 19' E. at 40.00  
 saw small floating rock marked by  
 Find no evidences, any where  
 of cor. field notes furnished  
 marked stone  
 call for pits and mound  
 of earth but now had rock  
 is within 2 to 3 inches of

N. Bdy T. &amp; S. R. 30 E.

surface.

Set granite stone  $12 \times 9 \times 7$  at 33~~the~~ mound of stone for $\frac{1}{4}$  sec cor to sec. 33 & 4 marked $\frac{1}{4}$  S on N face raise a mound  
of stone  $2\frac{1}{2}$  ft base  $2\frac{1}{2}$  ft high  
N. of cor.S. sq' <sup>19.0</sup> 32 E and at 80.00find bed rock near surface  
some evidences of cor. shallow pit. and  
~~at old remains of cor.~~  
at old remains of cor.Set granite stone  $14 \times 7 \times 6$ the mound of stone for  
and 34

see cor sec 33, marked

3 notches on W of face raise

a mound of stone 3 ft base  
3 ft high W. of cor.John Nash  
U. S. Deputy  
Surveyor

Office of U. S. Surveyor General,  
Phoenix, Arizona,

Nov. 25 1903

The foregoing field notes of the survey of the East + North Keys, Sp. 5 D. R. 30 E., + retriacement lines of Sp. 5 D. R. 30 E., Gila and Salt River Base and Meridian, Arizona, executed by *John Nash*

U. S. Deputy Surveyor, under Contract No. 83 dated *May 23/04* having been critically examined, the necessary corrections and explanations made, the said field notes and the surveys they describe are hereby approved

*Frank D. Lyzall*

U. S. Surveyor General for  
the District of Arizona.