

2.

1685

BOOK 1685

1685

4-671

FIELD NOTES
GENERAL LAND OFFICE.

Exteriors

of

Tp. 18-19-20 N,

Rs 9^{and} 10 W.

1685

BOOK 1685

Field Notes
of the
surveys of
Interior
Tps. 18-19^{and} 20 N. R. 9^{and} 10 West.
of the
Gila^{and} Salt River Bas^{and} Meridian
in the
Territory of Arizona
as surveyed by
Philip Cortzen
U. S. Deputy Surveyor
Under his Contract No. 27
Dated Feb. 10, 93.

Survey Commenced May 13, 1893
Survey Completed July 27, 1893

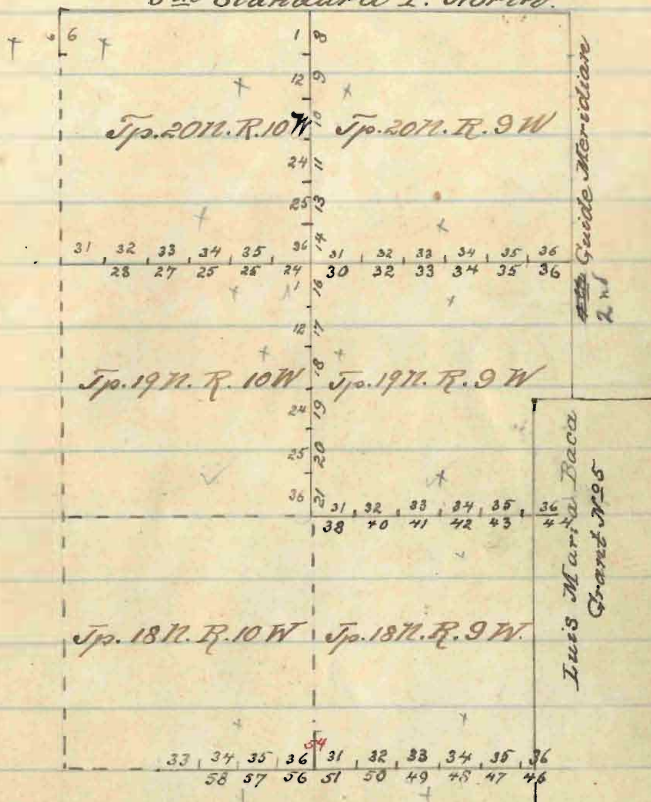
Index.

Trac. West Body	T 20 N	R 10 W	6
East "	T 20 N	R 10 W	8
"	" 19 "	" 10 "	16
Saults	" 20 "	" 10 "	24
"	" 20 "	" 9 "	30
"	" 19 "	" 9 "	38
"	" 18 "	" 9 "	46
Trac "	" 18 "	" 10 "	56

BOOK 1685

Index

5th Standard P. North.



17 - 9
pages 4 & 5 are Blank

Exterior Boundaries

- Chains begin at the Closing cor
 to Spr 20 N. R. 10^{and} 11 W. as before
 in before described
 Thence Run
 South 40^{and} 6
 Va. 14° 51' E.
 ascent ridge
 8.00 top of Ey
 13.00 descent
 30.00 bottom^{and} ascent
 34.90 Set a Granite stone 24 x 12 x 10 in stone
 in the ground for 1/4 sec cor, marked
 1/4 on W face^{and} raised, a mound
 of stone 1/2 ft high 3 ft base a-
 long side. Ditto impracticable
 38.00 top
 53.00 descent into Cañon
 54.00 bottom^{and} ascent to N E
 56.00 top

Sp 20 N. L. 10 West.

74.90 Set a Volcanic ^{stone} $12 \times 12 \times 10$ ins 8 ins in
 the ground for por to sec 1-6-7 ^{and 12}
 marked with 1 notch on N ^{and 5}
 notches on S. edges, ^{and} raised a
 mound of stone $1\frac{1}{2}$ ft high $2\frac{1}{2}$ ft base
 alongside. Pits impracticable.
 Land Broken [&] mountainous
 Soil 3 to ^{and 4} th rate

No Timber
 Mountainous land 74.90 chs
 May 13. 1893.

At this point I discontinue my
 line on account of inaccessible
 Canons and Mountains.

✓ At 13 M May 15 1893. At corner cor. to Sp
 20 N R. 9 ^{and 10} W I take an observation on
 the sun ^{and} find my instrument in
 perfect adjustment.
 Lat. $35^{\circ} 9' N$ Mean Va. $14^{\circ} 50' E$

Exterior Boundaries

chains I begin at cor to T¹ 200 N R. 9² 10
 W. as herein before described

Thence I run

South bet sees. 1^{and} 6.

Va. $14^{\circ} 53' E$.

Through Timber ²/₃ dense undergrowth

30.00 ascent ridge

37.00 top br Ey

35.00 Set Sand stone $24 \times 12 \times 10$ ins 16 ins in the
 ground for $\frac{1}{4}$ sec corner marked $\frac{1}{4}$ on W
 face ^{and} raised a mound of stone
 $\frac{1}{2}$ ft high 2 ft base alongside. This
 impracticable.

41.00 descent

67.00 bottom

75.00 Set a line stone $15 \times 13 \times 4$ ins 10 ins in
 the ground for cor to sees 1-6-7 ^{and} 7
 marked with 1 notch on N ^{and}
 5 notches on S faces ^{and} raised a

Sp 20 T. 10 West.

Chain mound of stone, $\frac{1}{2}$ ft high 2 ft base
alongside. Pits impracticable.

Land mountainous.

Soil 4 th rate

75 chs Juniper. Timber.
~~Dense undergrowth~~ 75 chs

South ht sec 7 and 12

Va $14^{\circ} 53' E$

ascend ridge through timber

3.00 top and descent br. Ey

12.00 bottom

25.00 Wash 10 lks wide br. Ey

30.00 ascend ridge

39.50 top br Ey and descent

40.00 Set a lime stone $15 \times 10 \times 10$ ins in
the ground for $\frac{1}{4}$ sec cor marked $\frac{1}{4}$ on
W face and raised a mound of stone
 $\frac{1}{2}$ ft high 2 ft base alongside.
Pits impracticable

Exterior Boundaries

73.00 bottom

80.00 Set a volcanic stone 12x15x10 ins
8 ins in the ground for cor. to sec
7-12-13^{and} 18 marked with 7
notches on N^{and} 4 notches on
S edges. ^{and} raised a mound
of stone 1/2 ft high 2 ft base
alongside. Pits impracti-
cable

Land Mountainous

Soil sand^{and} and 3 sdvate
rocks scattering ⁱⁿ ~~in~~ ^{Wester}
Mountainous land rocks

South Pt. sec. 13^{and} 18

Va. 14° 53' E

ascend through brush ^{growth} dense ⁱⁿ ~~in~~ ^{Wester}

3.00 top of ridge to N. E. ^{and} descent

5.00 bottom ^{and} ascent mesa

9.00 top

Apr 20 N. A. 10 West.

40.00 Set sandstone $12 \times 12 \times 10$ ins 8 ins in
the ground for $\frac{1}{4}$ sec. cor marked $\frac{1}{4}$ on W
face, dug pits $18 \times 18 \times 12$ ins N^{and} S. of stone
 $5\frac{1}{2}$ ft dist. ^{and} raised a mound of earth
 $\frac{1}{2}$ ft high $3\frac{1}{2}$ ft base alongside.

61.30 Wash 20 lbs wide. ln. N.W.

61.50 Road (Prescott ^{and} Hackberry) ln. N.W.

75.00 Leave Mesa ^{and} ascent into ge.

80.00 Set a volcanic stone $12 \times 12 \times 10$ ins 8 ins in
the ground for corners 73-18-19 ^{and} 24
marked with 3 notches on N^{and} S. faces
^{and} dug pits $18 \times 18 \times 12$ ins in each sec. $5\frac{1}{2}$ ft
dist ^{and} raised a mound of earth $\frac{1}{2}$ ft high
 $4\frac{1}{2}$ ft base alongside.

Land Rolling

Soil 2nd ^{and} 3rd rate

20 lbs Oak Bush.

Dense undergrowth soaks

South Port sec 19 ^{and} 24.

Exterior. Boundaries

Chain Va. $14^{\circ} 52' E$

- Through Timber, ^{and bench} ascend ridge
- 3.00 top to NW ^{and descend}
- 9.00 bottom ^{and ascend} ridge
- 3.00 top to NW.
- 14.00 descend
- 28.00 bottom
- 40.00 Set a post 3 ft long 3 in square with marked stone 12 in in the ground for $\frac{1}{4}$ sec corner marked $\frac{1}{4}$ S on W face; aug pits 18 x 18 x 12 in N ^{and} S. of post $5\frac{1}{2}$ ft dist ^{and raised} a mound of earth $\frac{1}{2}$ ft high $3\frac{1}{2}$ ft base around post.
- 52.79 Intersect Wire Fence to N34°W
- 80.00 Set a Volcanic stone 18 x 12 x 4 in in the ground for corner sec 19-24-25 ^{and} 30 marked with 4 notches on N ^{and} 2 notches on S faces, aug pits 18 x

Sp 20 T. L. 10 West.

Chains 18 x 18 ins in each sec $5\frac{1}{2}$ ft ^{and} ^{is}
 raised a mound of earth 2 ft high
 $4\frac{1}{2}$ ft base alongside.

Land mostly mountainous
 Soil 2nd ^{and} 3rd rate

80 chs scattering Juniper ^{2nd} ^{of} brush
 Mountainous ~~land~~ 28 chs
 May 15 1893.

South lat sees 25^{and} 30

La. 14° 50' E.

Through scattering timber

15.00 leave timber ^{and} ascend ridge

22.00 top br. N. E. y.

30.00 Re enter Timber ^{brush}

40.00 Set a Volcanic stone 15 x 12 x 7 ins 10 ins in
 the ground for $\frac{1}{4}$ sec cor marked $\frac{1}{4}$ on W
 face, dug pits 18 x 18 x 12 ins N ^{and} S of stone
 $5\frac{1}{2}$ ft ^{is} ^{and} raised a mound of earth
 $1\frac{1}{2}$ ft high $3\frac{1}{2}$ ft base alongside.

80.00 Set a Volcanic stone 12 x 10 x 10 ins 8 ins

Exterior Boundaries

chain in the ground for cor to sec 25-30-

31^{and} 36 marked with 5 notches on

N^{and} 1 notch S faces^{and} raised

a mound of stone 1/4 ft high 2 ft

base alongside

Land Hills

Soil 3rd^{and} 4th rate

65 chs scattering Juniper Timber

South bk sec 31^{and} 36.

Var 14° 52' E.

6.00 descent into Canon

15.00 bottom^{and} ascent. br. W'y.

22.87 top^{and} Enter^{timber} dense brush

40.00 Set a volcanic stone 15 x 10 x 5 ins 10 ins in
the ground for 1/4 sec marked 1/4 on N
face^{and} raised a mound of stone 1/4 ft
high 2 ft base alongside. Pile is
practicable

Sp 20 N. E. 10 West.

58.69 descent into Cañon

62.00 bottom ^{and} ascent to N.W.

67.19 top

80.00 ~~Set~~ Volcanic stone 18x18x12 ins 12 ins in
the ground for cor to top 19^{and} 20 N Re

9^{and} 10 west marked with 6 notches
on N. S. E ^{and} West ges. ^{and} raised a

mound of earth 1 1/2 ft high by 3 ft base
along side. Pits impracticable.

Land Mountainous

Soil 4 the rate

^{Superior} lumber

57.13 chs dense undergrowth
Mountainous land and dense
undergrowth 80 chs May 16, 93

Exterior Boundaries

Chains I begin at cor to Tps 19^{and 20} N
R. 9^{and 10} W as herein before
described

Thence Run

South Bet secs 1^{and 6}.

Pa 14° 50' 6"

40.00 Set a Volcanic stone 15 x 12 x 6 ins 2 ins
in the ground for 1/4 sec cor marked
1/4 on W face^{and} raised a mound of
stone 1/2 ft high 2 ft base along
side. Pits impracticable.

60.00 Set a Volcanic stone 36 x 24 x 8 ins 2 7 ins
in the ground for cor to secs 1-6-7^{and 12}
marked with notch on N^{and 5}
notches on S faces^{and} raised a mound
of stone 1/2 ft high 2 ft base a-
long side. Pits impracticable.

Land level

Soil 2^{and 3} rate

Op 19 T R 10 West.

BOOK 1685

17

Chains No Timber

South lat sec 7 ^{and 15}

Var. $14^{\circ} 52' E$.

40.00 Seta Volcanic stone $18 \times 15 \times 6$ ins $1/2$ in
in the ground for $1/4$ sec corner marked $1/4$
on N face, dug pits $18 \times 18 \times 15$ ins N ^{and S}
of stone $5/2$ ft 5 inch, ^{and} raised a mound
of earth $1/2$ ft high $3/2$ ft base along
side.

80.00 Seta Volcanic stone $21 \times 15 \times 6$ ins 14 ins
in the ground for cor to sec 7-15-13 ^{and 18}
marked with 2 notches on N ^{and 4}
notches on S faces ^{and} dug pits $18 \times 18 \times 12$
ins. in each sec $5/2$ ft 5 inch, ^{and} raised
a mound of earth 2 ft high $4/2$ ft
base along side
Land Level
Soil 2nd rate.

Exterior Boundaries

Chain No Timber

South lat secs 13^{and} 18

Na. 14° 53' E.

40.00 Set a Volcanic stone 36x12x8 ins 7 in
in the ground for 1/4 sec cor marked 1/4
on W face ^{and} raised a mound of
stone 1/2 ft high 2 ft base alongside.
Pits impracticable.

80.00 Set a Volcanic stone 24x12x8 ins 6 in
in the ground for cor to secs 13-18-19^{and}
24 marked with 3 notches on N^{and}
S faces ^{and} raised a mound of stone
1/2 ft high 2 ft base alongside.
Pits impracticable.

Land Level

Soil 3rd rate

No Timber

Apr 19 T. R. 10 West.

Chains South But sees. 19 ^{and 24}

Var $4^{\circ}52'E$.

38.00 descend into Cañon

30.00 bottom ^{and ascend} Is West

40.00 Set a Volcanic stone $7 \times 16 \times 6$ ins in
the ground for $\frac{1}{4}$ sec. cor marked $\frac{1}{4}$ on W
face ^{and raised} a mound of stone $\frac{1}{2}$
ft high $\frac{1}{2}$ ft base alongside. Pits
impracticable.

45.50 top

80.00 Set a Granite stone $24 \times 14 \times 8$ ins in
the ground for cor to sees 19-24-25 ^{and 30}
marked with 4 notches on N ^{and 2}
notches on S face ^{and raised} a mound
of stone $\frac{1}{2}$ ft high $\frac{1}{2}$ ft base along-
side. Pits impracticable.

Land level ^{and} Broken
soil. 3rd ^{and} 4th rate.

No Timber

Mountainous land 28 chs

May 17. 1893

Exterior Boundaries

Chain South Pt. sec 25^{and} 30

Pa. 74° 50' E.

along East slope of Cañon to N. E. S.

35.00 descends to Cañon along E. slope

40.00 Set a sand stone 18 x 12 x 6 ins 12 ins in
the ground for 1/4 sec. cor marked 1/4
on W face ^{and} raised a mound of
stone 1/2 ft high 2 ft base along
side. Pit impracticable

45.00 Enter bottom of Cañon & Wash
25 lks wide by N. N. W.

71.00 ascend W slope

80.00 Set a Granite stone 12 x 10 x 8 ins 8 ins in
the ground for cor to sec 25-30-31 ^{and} 36
marked with 5 notches on N ^{and}
1 notch on S. faces ^{and} raised a
mound of stone 1/2 ft high 2 ft
base along side. Pit imprac-
ticable.

21
BOOK 1638
Apr 19 N. R. 10 West.

Chains Land Mountainous rocks
Soil Worthless
No Timber
Mountainous land rocks

South Basecs 31 ^{and} 36.

Va. 14° 52' E

40.00 Set a Volcanic stone 12 x 10 x 6 ins 8 ins in
the ground for $\frac{1}{4}$ sec cor, marked $\frac{1}{4}$ on W
face and raised a mound of stone $\frac{1}{2}$ ft
high 2 ft base alongside. Pits im-
practicable

49.50 Bluff 150 ft high

50.50 top $\frac{1}{2}$ descend

74.00 Gulch. 2 chs wide course E $\frac{1}{2}$ W ascend

80.00 Set a Volcanic stone 27 x 14 x 10 ins 8 ins in
the ground for ^{cor. to} $\frac{1}{4}$ sec $\frac{1}{4}$ ^{and} 19 N. R. 9 ^{and} 10
West marked with 6 notches on N.
S. E. ^{and} W edges, and raised a mound
of stone $\frac{1}{2}$ ft high 2 ft base alongside

Exterior Boundaries

Rite impracticable

Land Broken & mountainous

Soil. 4th rate

No Timber

Mountainous land 30.50chs.

May 18. 93.

copy
 Apr 19. R. R. 10 West.

Line des'g noted as	True bearings		Latitudes		Departures	
	East	West	N	S	E	W
S. Boundary Dec. 24	80.00				80.00	
E. Bdy. J. 19. N. R. 10 W	240.00	320.00				
N. Bdy. J. 19. N. R. 10 W	240.00					240.00
E. Bdy Dec. 3	80.03			80.03		
E. Bdy Dec. 10	80.00			80.00		
S. Bdy Dec's 10 & 11	160.00				160.00	
N. Bdy Dec's 13 & 24	160.00			160.00		
Totals			320.00	320.03	240.00	240.00
				320.00	240.00	

Error in lat. .03 Error in dep. .00

Exterior Boundaries

Chain I begin at cor to Tps. 19^{and} 20 N. R. 9^{and} 10 W as herein before described

Thence I run

W on a true line, between 1^{and} 36.

To a 14° 51' E.

40.00 Set a Volcanic stone 18 x 12 x 6 ins. in the ground for 1/4 sec. cor marked 1/4 on N face and raised a mound of stone 1/2 ft high 2 ft base alongside. Pits impracticable.

A Cedar 6 ins diam bears N 24° 30' W 219 lks dist. marked 1/4 S. B. 5
No other tree within limit

80.00 Set a Volcanic stone 24 x 8 x 5 ins in the ground for cor to pccs. 1-2-35^{and} 36 marked

with 1 notch on E. and 5 notches on W faces

and raised a mound of stone 1/2 ft high 2 ft

base alongside Pits impracticable.

A Cedar 16 ins diam bears N 39° E 199 lks dist marked J. 20 N. R. 10 W. S. 35. B. 5.

and level

↑ A Cedar 15 ins diam bears S 45° 20' E 392 lks dist. marked J. 19 N. R. 15 W. S. 2. B. 5.

No other trees within limit

Soil 2nd rate
No Timber
Timber scattering
cedar

Apr 30 T. R. 10 West.

W. on a true line bet sec. 2 ^{and 35}

Va. 14° 52' E.

40.00 Set a Volcanic stone 21x10x8 ins in the ground for 1/4 sec cor marked 1/4 on N face ^{and} raised a mound of stone 1/2 ft high 2 ft base along side. Pits impracticable.

45.00 descend into Canon

73.00 bottom bro S.

78.00 ascend

80.00 Set a Volcanic stone 12x10x8 ins 8 ins in the for cor to sec. 2-3-34 ^{and 35} marked with 2 notches on E ^{and} 4 notches on W faces ^{and} raised a mound of stone 1/2 ft high 2 ft base alongside. Pits impracticable. ^{and top}
Land Broken ^{and} mountainous 35 chs
Soil # the water

No Timber scattering cedar
Mountainous land 35 chs

W. on a true line bet sec. 3 ^{and 34}

Exterior Boundaries

Chains Va. 14° 53' E

2.00 ~~Topo~~

22.25 desc into Cañon and owing to the perpendicular walls at cor front. at this point I set a volcanic stone 24 x 10 x 10 inches in the ground for 1/4 sec. W.C. marked 1/4 W.C. on N face. and raised a mound of stone 1/2 ft high 2 ft base along side. Pit's impracticable.

36.50 Bottom and ascent br. S.

6.225 top

74.00 ^{Timber} Entire dense undergrowth

80.00 set a volcanic stone 12 x 10 x 8 inches in the ground for cor to piece 3-4-33 34 marked with 3 notches on E. and W faces and raised a mound of stone 1/2 ft high 2 ft base alongside. Pit's impracticable
Land Broken ^{and} mountainous 42 chs
Soil 4th rate

^{Super Timber}
64.00 dense undergrowth
Mountainous land and dense undergrowth 48 chs

May 19, '93

27

BOOK 1685

Apr 20 M. R. 10 West.

Chains W. on a true line bet sees. 4^{and} 33.

Va. 14° 5.0' E.

through ^{dense} ^{timber} undergrowth

40.00 Set a Volcanic stone 15 x 15 x 5 ins 10 ins in the ground for ^{see} corner marked 4 on W face and raised a mound of stone 1/2 ft high 2 ft base alongside. Pits impracticable.

48.80 descent over Bluffs 20 ft high, and ^{timber} dense undergrowth

64.00 bottom ^{and} ascend ridge bet S.

70.00 top to N.

80.00 Set a Granite stone 27 x 15 x 6 ins 8 ins in the ground for ^{see} corner marked 4-5-32 ^{and} 33 marked with 4 notches on E ^{and} 2 notches on W faces and raised a mound of stone 1/2 ft high 2 ft base alongside. Pits impracticable.

Land Broken ^{and} mountainous st. rocks

Exterior Boundaries

chains Soil 3rd ^{and 4th rate}
 48.80 chs. ^{Timber Juniper} dense undergrowth
 Mountainous land ^{at} dense
 undergrowth 80 chs

W. on a true line lat. sec. 5 ^{and 33}
 Va. 14° 51' E.

1.00 descent

6.50 Gulch br. S.

8.00 ascent

30.00 top ^{and} descent

40.00 Set a Granite stone 21 x 12 x 8 in. 4 in. 10

in the ground for 1/4 sec cor marked 5/4

on N face ^{and} raised a mound of stone

1/2 ft high 2 ft base alongside Pits in

practicable. Land mountainous

soil worthless
 Timber - dense brush

Mountainous land 40 chs May 30. '92

At this point I discontinue work

owing to inaccessible cañons

which begin to be very numerous

at this point

capd
 Apr 20 R. L. West.

Line designated as	True bearing	Dist.	Latitudes		Departures
			N	S	
Extremities of S. 20 N. R. 10 W.					
Line designated as					
S. boundary	East	320.00			320
E. boundary	North	475.00	475.00		
N. boundary	N 89° 48' W	35.17	.11		35.17
(5th Stand. Co. N.)	N 89° 22' W	40.00	.44		40.00
"	N 89° 28' W	39.52	.37		39.52
"	S 89° 51' W	39.17		.10	39.17
"	S 89° 56' W	41.73		.05	41.73
"	S 89° 49' W	40.71		.13	40.71
"	S 89° 38' W	41.59		.26	41.59
"	N 88° 42' W	40.76	.91		40.76
"	West	42.50			42.50
"	S 89° 37' W	40.75		.27	40.75
"	S 89° 25' W	39.57		.40	39.57
"	N 89° 42' W	36.51		✓	36.51
W. boundary	South	74.90	18	74.90	
S. boundaries Sec. 5 & 6	N	158.04			158.04
W. boundaries Sec. 5 & 6	S	400.00		400.	.23
Convergence	S 0° 2' E				.50
Totals			477.01	476.11	478.27
Error in latitude			.90		478.27
Error in departure					478.27
					.21

Exterior L. Boundaries

Chains $Ab. 8.45$ @ M June 3^{rd} '3 the magnet
 bearing of line bet secos $^{and} 36$ is N
 $14^{\circ} 51' W$

From the cor to Tps $19^{and} 20$ $N. R. 8^{and} 9$
 $W.$ I run N on a random line between
 said townships, the variation on my
 compass being $14^{\circ} 51' E$.

Set temporary half mile ^{and mile} corners
 each $40^{and} 80$ chains, ^{and} I find the
 township line to be 5 miles 78 chs ^{and}
 53 lks long, ^{and} the falling to be 28 lks
 S of the cor to Tps $19^{and} 20$ $N. R. 9^{and} 10$
 $W.$ The correction of the true line
 will therefore be $4 \frac{2}{3}$ ^{mi} north, per mile
^{and} its course will be $N. 89^{\circ} 58' E$.

From the cor to Tps. $19^{and} 20$ $N. R. 9^{and}$
 10 W as herein before described

True

$N. 89^{\circ} 58' E$ on a true line bet secos ^{and} 31

Apr 20 H. L. G. West.

Chains Va 14° 51' E.

20.00 Enter Cañon brs N. by through brush

23.60 bottom and ascent brs N. by

26.00 top

30.00 Edge of Cañon, descent

34.00 bottom and ascent brs N. by

36.00 top

38.00 descent into Cañon br. N. W.

38.53 bottom: Set a volcanic stone 12 x 8 x 6

in 8 ins in the ground for 1/4 sec. cor

marked 1/4 on N face and raised a mound

of stone 1/2 ft high 1/2 ft base along guide

Pit is impracticable.

48.50 Leave Cañon and ascent

72.50 top

78.53 Set a volcanic stone 12 x 8 x 6 ins 8 ins in

the ground for cor to sec. 5-6-31 and 32

marked with 5 notches on E. and 1 notch

on N faces and raised a mound of stone 1/2

Exterior Boundaries

Chains ft high & ft base alongside. Pits impracticable

Land Mountainous 78.53 Chs.

Soil 4th rate

60 chs ^{Super Timber} cedar & juniper brush
Mountainous Land 78.53 Chs

N 89° 58' E on a true line 1/4 sec 5 ^{and 32}

Sa. 14° 53' E

5.00 des cent

40.00 Set a Volcanic stone 12 x 12 x 7 inches in the ground for 1/4 sec cor marked 4 on N face ^{and} raised a mound of stone 1/2 ft high & ft base alongside. Pits impracticable

+ 5.00 bottom

80.00 Set a Volcanic stone 12 x 12 x 10 inches in the ground for cor to sec 4 - 5 - 32 ^{and 33} marked with 4 notches on East & 2 notches on W faces ^{and} raised a mound of stone 1/2 ft high & ft base alongside. Pits

Apr 20 N. R. 9 West

Chains impracticable

Land Rolling ^{and} mountainous 40chs
Soil 4th rate

Timber scattering Juniper ^{and} Cedar
Mountainous Land 40chs

N. 89° 58' E on a true line bet sees. 4 ^{and} 33
Va. 14° 52' E

40.00 Set a volcanic stone 16 x 8 x 8 ins 11 ins
in the ground for 1/2 sec cor marked 1/4
on N face ^{and} raised a mound of stone 1/2
ft high 2 ft base alongside. Pil's im-
practicable.

50.00 ascend small ridge

70.00 top br Ny.

73.00 descent

80.00 bottom ^{and} set a volcanic stone 12 x 10 x 8 ins
8 ins in the ground for cor to sees 3-4 ^{and} 33 ^{and} 34
marked with 3 notches on E ^{and} W face
^{and} raised a mound of stone 1/2 ft high

Exterior Boundaries

Chain 2 ft base alongside. Pits impracticable

Land Broken ^{and} mountainous 29 chs
Soil Worthless

Timber scattering Juniper ^{and Cedar}
Mountainous ~~land~~ 29 chs
June 3 1893

N 89° 58' E on a true line to acc 3 ^{and} 34
Va. 14° 50' E

40.00 Set a Volcanic stone 18 x 12 x 6 ins in the
ground for $\frac{1}{4}$ sec cor marked $\frac{1}{4}$ on N
face ^{and} raised a mound of stone $\frac{1}{2}$
ft high 2 ft base alongside. Pits im-
practicable.

80.00 Set a Volcanic stone 12 x 12 x 8 ins in the
ground for cor to acc 3-34 ^{and} 35 marked
with 2 notches on E ^{and} 4 notches ^{and} W
faces ^{and} raised a mound of stone $\frac{1}{2}$
ft high 2 ft base alongside. Pits im-
practicable.

Apr 20 N. E. West.

Land Level

Soil 3rd ^{and} + 4th rate

and Cedar
 Timber scattering Juniper

N. $89^{\circ} 58' E$ on a true line bet sec 2 ^{and} 35

Pa. $14^{\circ} 53' 6''$

40.00 Set a Volcanic stone $16 \times 8 \times 6$ ins in
 the ground for $\frac{1}{4}$ sec. cor marked $\frac{1}{4}$ on N
 face ^{and} raised a mound of stone $1\frac{1}{2}$ ft
 high 2 ft base alongside. Pits imprac-
 ticable

80.00 Set a Volcanic stone $13 \times 8 \times 6$ ins in
 the ground for cor to sec 1-2-35 ^{and} 36 mark
 ed with 1 notch on E ^{and} 5 notches on W
 faces ^{and} raised a mound of stone $1\frac{1}{2}$
 ft high 2 ft base alongside. Pits im-
 practicable

Land Rolling

Soil 3rd ^{and} 4th rate

Exterior Boundaries

Chains Timber scattering Juniper ^{and Cedar}

N. $89^{\circ}58'$ E on a true line to sec. 1 ^{and 36.}

N. $14^{\circ}51'$ E.

40.00 Set a volcanic stone $15 \times 8 \times 7$ ins in size on the ground for $\frac{1}{4}$ sec cor marked $\frac{1}{4}$ on N face and raised a mound of stone $\frac{1}{2}$ ft high 2 ft base along side. Pits impracticable.

80.00 The cor to Sp. 19 and 30 N.

Rs. 8 and 9 West.

Land Level

Soil 3rd rate

Timber scattering Juniper
and Cedar

June 4th 1893.

Apr 20 H. D. West 37

Extremes Tr. 20 N. R. 9 W	True bearing	Dist	Latitudes	Departures
N. boundary	N 89° 08' E	478.53	.28	478.53
E. boundary	North	480.00	480.00	
N. boundary	S 89° 09' W	25.54	.30	25.54
(5th standard in R.)	S 89° 15' W	40.36	.52	40.36
"	S 89° 18' W	40.54	.49	40.54
"	S 89° 35' W	40.35	.29	40.35
"	West	40.67		40.67
"	S 89° 54' W	40.94	.71	40.94
"	N 89° 53' W	40.89	.08	40.89
"	N 82° 39' W	39.23	5.15	39.23
"	N 89° 26' W	40.27	.40	40.27
"	N 88° 06' W	41.32		41.32
"	N 88° 16' W	41.80	1.21	41.80
"	N 89° 48' W	41.00	1.14	41.00
"	N 89° 48' W	5.07	.02	5.07
N. boundary	South		475.00	
Convergence				
Totals		482.94	482.86	478.53
Error in latitude		482.86		478.48
				Error in dep. .06

Exterior Boundaries

Chains At 8 A.M. June 30. 93 the magnetic bearing of line bet secs³⁵ and 36 is $N 14^{\circ} 52' W$

From cor to secs. 1-2-35 and 36 to Tps 18 and 19 N.R. 9 W. I run W on a random line between said townships, the variation of my compass being $14^{\circ} 52' E$.

I set temporary half-mile and mile corners at each 40 and 80 chains, and find the township line to be 4 miles 78 chs and 70 lks long, and the falling to be 9 lks S. of the cor to Tps 18 and 19 N.R. 9 and 10 W. The correction of the true line will therefore be $1\frac{1}{2}$ lks N. per mile and its course will be E. From cor to Tps 18 and 19 N. Rs. 9 and 10 W as herein before described. I run E on a true line bet secs 6 and 31.

Apr 19 R. R. West.

Chains Va. 14° 5' 26"

ascend ridge

10.00 top ^{and} descend ^{brs} N.Y.

38.70 Set a Granite stone 24 x 18 x 6 ins 6 ins
in the ground for $\frac{1}{4}$ sec cor marked $\frac{1}{4}$
on N face and raised a mound of stone
 $1\frac{1}{2}$ ft high 2 ft base along side. Pits
unpracticable

✓ 46.00 bottom ^{and} ascend ridge brs North

59.00 top ^{and} descend brs N.Y.

61.50 Gulch brs N.Y. ^{and} ascend

77.00 Top

78.70 Set a Volcanic stone 27 x 26 x 10 ins 18 ins
in the ground for cor top sec 5-6-31 ^{and} 32
marked with 5 notches on E. ^{and} 1
notch on N face ^{and} raised a mound
of stone $1\frac{1}{2}$ ft high 2 ft base along
side. Pits unpracticable, ^{and} top
Land Mountainous 78.70 chs.

Soil 3rd ^{and} 4th rate.

Exterior Boundaries

Chains ✓ Timber scattering Juniper
and cedar
mountainous land 78.7000

E on a true line bet sec 5 ^{and 32}

7a. 14° 54' 6"

24.00 descends through Brush

29.50 bottom ^{and ascend} ridge brs N.

36.00 top ^{and descend} brs N.

40.00 Set a granite stone 15x8x6 ins 10 ins in
the ground for 1/4 sec cor marked 1/4
on N face and raised a mound of stone
1/2 ft high 2 ft base alongside. Pits
impracticable.

✓ 45.00 bottom ^{and ascend} ridge brs N. E

61.00 top ^{and leave} Brush brs N. ^{and descend}

✓ 62.50 bottom ^{and ascend} ridge brs N. E

75.00 top ^{and descend} brs N.

80.00 Set a Volcanic stone 24x10x10 ins 16 ins

in the ground for cor to sec 4-5 ^{and 32}
marked with a notch on E ^{and 32}

Apr 19 R. L. West.

Chains chas on W faces^{and} raised a mound of
stone $\frac{1}{2}$ ft high 3 ft base alongside
Pits impracticable

Land mountainous 80 chs.

Soil Worthless

(3) 37 chs. Greasewood Bush.

Mountainous land rocks

E on a true line ht sec. 4^{and} 33

Na. $14^{\circ} 53' E$.

descend

5.00 bottom^{and} ascend ridge

8.00 top^{and} descend br. Ry.

✓ 24.00 bottom br. N.W.

✓ 25.00 Wash 50 chs wide br. N.W. and ascend

✓ 36.50 Top of ridge and descend

38.50 bottom br. N.W.

40.00 Set a Volcanic stone 24 x 12 x 8 ins. 10 ins in

the ground for $\frac{1}{4}$ sec. circ marked $\frac{1}{4}$ on N
face^{and} raised a mound of stone $\frac{1}{2}$ ft
high 3 ft base alongside. Pits in-

Exterior Boundaries

Chain practicable.

80.00 Set a volcanic stone 18x12x8 ins 8 ins
in the ground for cor to pccs 3-4-33^{and} 34
marked with 3 notches on E^{and} W
faces^{and} raised a mound of stone
1/2 ft high 2 ft base alongside.

Pito impracticable.

Land Rolling^{or} mountainous 28.50chs

Soil 2nd^{and} 3rd rate

No Timber

Mountainous land 28.50chs

C on a true line bet pccs 3^{and} 34

Pa. $14^{\circ} 51' E$.

26.00 Wash. 30k wide to S. E.

40.00 Set a volcanic stone 24x8x8 ins 11 ins in
the ground for 1/4 sec^{cor} marked 1/4 on N face
^{and} raised a mound of stone 1/2 ft high
2 ft base alongside Pito impractica-
ble.

Apr 19 N. R. 9 West.

50.00 descend into Cañon

53.00 bottom br. 24.

56.50 ascend

62.75 top

80.00 Set a Volcanic stone 18 x 12 x 10 ins 12 in in

the ground for cor to sec. 2-3-34^{and 35}

marked with 2 notches on E. ^{and 4}

notches on W faces ^{and} raised a mound

of stone 1/2 ft high 2 ft base along
side. Pits impracticable.

Land Broken ^{3/4} mountainous 12.75 chs

Soil 3rd ^{and 4th} rate

No Timber.

Mountainous land 12.75 chs

E on a true line bet sec. 2^{and 35}

Pa. 14° 51' E.

40.00 Set a Volcanic stone 15 x 10 x 5 ins 10 in in

the ground for 1/4 sec. cor marked 1/4

on N face ^{and} raised a mound of stone 1/2

Exterior Boundaries

Chain 4 ft high 2 ft base alongside. Pits impracticable

80.00 The cor to secs. 1-2-35^{and} 36, Twp. 18^{and} 19 N. R9W

Land Rolling

Soil 2nd and 3rd is rate

Timber scattering Juniper ^{and} Cedar

E. on a true line bet secs. 1^{and} 36

Na. $14^{\circ}53'E$

2028. Intersect N boundary of Luis Ma.

Baca Grant No 5 at a point

31.80 ch. N. $0^{\circ}44'E$ of 3 mile cor. ^{and} set

a Volcanic stone 12x12x12 ins of ins in

the ground for C. Cor. to fractional secs. 1^{and} 36. marked with CC. on W

and L. M. B. No. 5 on E. faces ^{and} raised

a mound of stone 1/2 ft high 2 ft base alongside. Pits impracticable

Apr 19 N. L. 9 West.

Land Rolling
Soil 3rd site
No Timber

June 30/93.

Extenters of 19 N. L. 9 W. — Latitudes, departures & closing errors.

Latitudes Departures

Lines	Dist	N.	S.	E.	W.
N. boundary	480	480.00			
N. boundary	478.53	.28		478.53	
S. boundary	252.60	252.60			
N. by M.B. Grant	57.27	.97			57.27
S. by M.B. Grant	18.24	18.24			.20
	80.22	80.22			1.67
	80.12	80.12			1.85
	48.22	48.22			.63
S. boundary	418.98				418.98
Closing				.50	
		480.28	480.37	479.03	480.60
			480.28		479.03

Error in latitude .09 Error in dep. 1.57

Exterior Boundaries

Chains At 9 a m July 25. 93 the magnetic bearing of line bet secs 35^{and} 36 is $14^{\circ} 55' E$.

From the cor to secs. 1-5-35^{and} 36.-

Sp. 17-18. N. R. 9 W., T. 11 N.

E. on a true line bet secs. 1^{and} 36.

Is $14^{\circ} 55' E$.

13.56. Intersect the W boundary of this Ma. Baca Grant No 5 at a point 17.06

ch. $71^{\circ} 3' E$. 1/2 mile cor. ^{and} set a

lime stone 18x10x6 ins 1 1/2 ins in the ground for closing cor to fractional

secs 1^{and} 36 marked with C. C. on W

and L. M. B. No 5 on E faces ^{and} raised

a mound of stone 1 1/2 ft high 2 ft

base along side Pile, impracticable.

Land Rolling

Soil 3rd rate

Timber scattering Juniper
and Cedar

Apr 18 N. R. 9 West.

Chains thence I return at cor to sec. 1 & 2
35 and 36 and run

West on a true line bet sec. 2 ^{and 35}

to $14^{\circ}55'6''$

Through brush ^{and dense} ~~at~~ undergrowth

40.00 Set a lime stone $12 \times 10 \times 8$ ins in the
ground for $\frac{1}{4}$ sec cor marked $\frac{1}{4}$ on N face
and raised a mound of stone $\frac{1}{2}$ ft high
& ft base alongside Pits imprac-
ticable.

80.00 Set a Volcanic stone $18 \times 10 \times 8$ ins in
the ground for cor to sec 2-3-34 ^{and 35}
marked with 2 notches on E. and
4 notches on N faces and raised a
mound of stone $\frac{1}{2}$ ft high & ft base
alongside. Pits impracticable
Land Rolling

Soil 3rd and 4th rate

80 chs ^{and dense} ~~at~~ brush ^{and} ~~at~~ undergrowth

Exterior Boundaries

Chains W on a true line between 3^{and} 34
 Va. 14° 56' 5".

Through Bush ²/₁ ^{dense} undergrowth
 2000 descend from mesa.

40.00 Set a volcanic stone 18 x 12 x 8 in in
 the ground for ¹/₄ sec in marked ¹/₄ on
 face and raised a mound of stone
 1/2 ft high 2 ft base alongside.

Pits impracticable.

44.00 bottom and ascend ridge. ¹/₂ br Southern

47.00 top (and descend ¹/₂ br N.Y.)

50.00 bottom and ascend ridge ¹/₂ br Southern

53.75 top ¹/₂ br N.Y.

80.00 Set a volcanic stone 18 x 10 x 6 in
 15 in in the ground for cor to pces. 3-4

33^{and} 34 marked with 3 notches
 on E^{and} faces and raised a mound

of stone 1/2 ft high 2 ft base along-
 side. Pits impracticable.

Apr 18 N. R. 9 West.

Chassis Land. Mountainous 60chs
 Soil 4th rate
 80 chs. ^{dense} Oak ^{Bonish} undergrowth
 Mountainous land and dense
 undergrowth 80chs

W on a true line bet secs. 4 and 33
 Va. $14^{\circ} 55' 5''$

along N slope of ridge bet N W.

Through ^{Brush} dense undergrowth

17.00 descend

26.00 bottom and ascend ridge bet S. E.

33.00 top and descend bet N W

40.00 Set a lime stone $12 \times 10 \times 6$ ins in the
 ground for $\frac{1}{4}$ sec or marked $\frac{1}{4}$ on N face and
 raised a mound of stone $\frac{1}{2}$ ft high $\frac{1}{2}$ ft base
 alongside. Pils impracticable.

41.00 bottom and ascend ridge

50.00 top bet N W

60.00 descend

70.00 bottom and ascend ridge bet S.

Exterior. Boundaries

Chains

80.00 Set a Volcanic stone 12x10x6 in 8 in in
the ground for corners # 5-32 ^{and 33, marked}
with 4 notches on E. ^{and 2 notches}
on W faces ^{and raised a mound}
of stone 1/2 ft high 2 ft base along-
side Pit's impracticable
Land Mountainous 80chs
Soil 4th rate
80chs Oak Bush ^{3/4} dense
under growth

W. on a true line bet. sec. 5 ^{and 32}
Va. 14° 55' E.

Brush growth
ascend through dense under

15.00 top of ridge by ^{and descend}

30.00 bottom ^{and leave} dense under-
growth

38.00 ascend mesa

40.00 Set a volcanic stone 13x10x6 in 8 in in
the ground for 1/4 sec circ marked 1/4 on W

Sp 18 N. R. 9 West.

Chains face ^{and} raised a mound of stone 1/2 ft high
2 ft base alongside. Pits impracti-
cable

44.00 Re-cutter ^{brush} dense undergrowth

55.00 top

76.00 descends

80.00 Set a Volcanic stone 18x6x10 in 15 in in
the ground for cor to sees 5-6-31 ^{and} 32 marked
with 5 notches on E ^{and} 1 notch on W
faces ^{and} raised a mound of stone 1/2
ft high 2 ft base alongside. Pits im-
practicable.

Land mountainous 72 chs

Soil + thrate


70 chs Oak ^{brush} ^{and} ^{dense} Greasewood
~~under growth~~
~~dense undergrowth and mountain~~
~~land rocks~~ July 25, 1893

W. on a line line bet sees 6 ^{and} 31

Var. 14° 55' E

descend along slope of Cañon through

Exterior Boundaries

- chains ^{Brush} dense undergrowth
 35.00 bottom ^{and} Creek 300 wide flows S.W.
 37.00 ascend 
 40.00 Set a limestone 15 x 12 x 6 ins in the ground
 for 1/4 sec cor marked 4 on N face ^{and} raised a
 mound of stone 1/2 ft high 2 ft base alongside
 Pit impracticable
 55.00 top ^{and} descend into gulch
 60.00 bottom ^{and} ascend to Sy.
 63.00 top ^{and} descend into gulch
 73.00 bottom ^{and} ascend Coursey South
 79.50 Set a Volcanic stone 15 x 10 x 6 ins in
 the ground for cor to Tps. 17 ^{and} 18 N.Rs. 9 ^{and} 10
 W. marked with 6 notches on N, S, E ^{and}
 Wedges ^{and} raised a mound of stone 1/2 ft
 high 2 ft base alongside. Pit im-
 practicable, from which
 A Cedar 12 mi diam br. N 24° E. 173 lbs
 Sect. make 1/4 18 N.R. 9 W. L. 31 B.T.

Sp 18 N. R. 9 West.

Chains A Cedar 12. ins diam br. N 1°30' W 190 Chs

L Sist marked Sp 18 N R 9 W.

136 B. T.

No other trees within limits

Land mountainous 79.50 chs

Soil Worthless

79.50 chs Oak and Greasewood ^{Bush} under-
growth

Mountainous land 79.50 chs
July 16, '93.

Exterior Boundaries

chain Thence from the corner
to Tps 18 N Rs. 9 and 10 W

7 min

N on a true line, hit sec
31 and 36.

Va 14° 56' E.

descend

3.00 bottom ^{course S. E} ascend ridge

24.00 top and descend to valley

29.00 Bluff 30 ft high

32.13 " 100 ft in height

36.00 top of Bluff

39.60 Creek, 25-lks wide, bottom
and ascend to S. E

40.00 Set a Volcanic stone 12 x 12 x 8 ins
8 ins in the ground for 1/4 sec cor
marked 1/4 on W face and raised
a mound of stone 1 1/2 ft high
base alongside. Pito

Sp 18 H. R. G. West.

Chains impracticable.

45.00 top and descend into gulch

50.00 bottom and ascend to top

66.60 top and descend into gulch

66.80 bottom and ascend to S.E.

70.00 top and descend.

80.00 Set a Granite stone 18 x 13 x 12 in 18 in in

the ground for cor to sec. 20-30-31 and 36.

marked with 5 notches on N and not

ch on S faces and raised a mound of
stone 4 ft high 5 ft base along side

Pits impracticable.

Land Mountainous. 80chs

Soil Worthless

✓ Timber scattering Juniper and Cedar
Mountainous land 80chs

July 31, '90

Owing to innumerable, inaccessible
Canyons, I am, at this point, com-
pelled to discontinue my line.

Quetior Boundaries

Chain thence return at cor to Tps 17^{and} 18
N. Rs. 9^{and} 10 W as herein before des-
cribed ^{and run}

W. on a true line bet secs. 1^{and} 36.

Pa. 14° 57' E.

ascend along slope of ridge

31.00 top

40.00 Set a Granite stone 18 x 9 x 8 ins 12 ins in the
ground for 1/4 sec. cor marked 1/4 on N face
^{and} raised a mound of stone 1/2 ft high
2 ft base alongside. Pits impracticable

47.00 descend into Cañon

70.00 Lottow^{and} ascend in ~~the~~ S. E.

50.00 Set a Granite stone 18 x 18 x 6 ins 12 ins in
The ground for cor to secs. 1-2-35^{and} 36
marked with 4 notches on E^{and} 5 not-
ches on N faces^{and} raised a mound
of stone 1/2 ft high 2 ft base a-
longside. Pits impracticable.

Apr 18 N. E. 10 West

Chains Land Mountainous 80 chs

Soil Worthless

Timber None

Mountainous land rocks

W on a true line bet sec. 2 and 35

Va. 1458 E.

ascend

9.00 top and descend to Ny.

19.00 bottom Sec S.E

20.00 ascend

35.50 top and descend into Gulch

40.00 Set a Granite stone 18x18x6 ins 12 ins in the ground for 1/4 sec. cor. marked 1/4 on N face and raised a mound of stone 1/2 ft high 2 ft base along side. Pits impracticable.

80.00 Set a Volcanic stone 12x12x6 ins 8 ins in the ground for cor to sec. 2-3-3-4 and 35 marked with 2 notches on E and 2 notches on W face

Exterior Boundaries

Chains ^{and} raised a mound of stone $\frac{1}{2}$ ft high
2 ft base alongside. Dito imprac-
ticable

Land mountainous rocks

Soil worthless

Timber scattering Juniper ^{and} Cedar
Mountainous Land rocks

W on a true line bet secs 3 ^{and} 34

7a. $14^{\circ} 56' E$

1.00 Bottom of Gulch ^{and} ascend bro S.

30.00 top ^{and} descend into Gulch.

40.00 This point falling on Granite stone
in place $18 \times 12 \times 5$ ins I marked a (x)
cross at exact cor. point with $\frac{1}{4}$ on
N ^{and} raised a mound of stone $\frac{1}{2}$ ft
high 2 ft base alongside. Dito im-
practicable.

51.00 bottom ^{and} ascend bro. S.E.

80.00 Set Sand Stone $12 \times 12 \times 6$ ins in the

Ap 18 N. R. 10 West. 59

ground for cor to sec 34-33 and 34
marked with 3 notches on E and W
faces and raised a mound of stone 1/2
ft high 5 ft base alongside. Pits
unpracticable.

Land mountainous 80chs

Soil Worthless

Timber scattering Juniper ^{in places}
Mountainous ~~land~~ 80chs
July 27, 1893.

At this point I am com-
pelled to discontinue my
line on account of inaccessible
Canyons and mountains

Philip Contzgers
U. S. Dep. Surveyor

For Final Notes
See Book No 40

Exterior Boundaries Twp. 18 N. R. 9 W.

Line designated True Bearing	Dist.	Latitudes		Departures	Closing errors
		N	S		
N. boundary East	260.28			260.28	
E. boundary S 44' W	31.80		31.80		.40
(W. side, T. 13. Grant, 1875)					
S 15' W	80.07		80.07		.34
S 58' W	80.17		80.17		1.34
S 28' W	80.14		80.14		.65
S 30' 48" W	65.80		65.80		3.37
S 5' W	79.60		79.60		.10
S 3' W	63.04		63.04		.05
S. boundary West	253.56			253.56	
N. boundary N 0° 2' W	320.00	320.00			19
(sec 10, 21, 28 x 36)					
S. boundary West	80.00				80.00
(sec. 8)					
N. boundary N 0° 2' W	80.00	80.00			.02
(sec. 8)					
N. boundary N 89° 57' E	80.26			80.26	
(sec. 8)					

Exterior Boundaries Tps. 18 N. R. 10 W.

N. boundary (sec. 4)	80.00	80.00	.05
Totals	480.07	480.62	340.59
		480.07	340.02
Error in latitude .55			
Error in departure			

Exterior of S. 18 N. R. 10 W. — Latitudes, departures & closing errors.

Line description True bearing dist.	Latitudes		Departures	
as ---	N.	S.	E.	W.
S. boundary West.	80.00			80.00
N. Sdy. Sec. 36	80.00			.02
N. Sdy. Sec. 36	80.20		80.20	
S. 18 N. R. 10 W. South	80.00		80.00	
Totals	80.18	80.00	80.20	80.02
	80.00		80.02	
Error in latitude .18 Error in depo... 18				

U. S. Surveyor-General's Office,

TUCSON, A. T. August 9, 1895-

The foregoing Field Notes of the Surveys of
 the Exterior Lines of
 Tps. 18, 19, & 20 N. R. 9 & 10
 West of the

Gila and Salt River Meridian
 in Arizona executed by

Philip Cortzen

U. S. Deputy Surveyor, under his contract dated

February 10, 1893

having been critically examined, the necessary corrections and explanations made, the said Field Notes and the surveys they describe are hereby approved.

Levi H. Manning

U. S. Surveyor-General
 for the Territory of Arizona.