

Recd Oct. 1. 1891 1744

Copied, Compared (to plats)

Transcript sent Com<sup>r</sup> G. L. O

Oct 24, 1891. with L. Transmittal

1744

1744

1744

BOOK 1744

4-671

BOOK 1744

FIELD NOTES 1744 ✓

GENERAL LAND OFFICE.

Report of L. D. Chilson

Special Examiner.

upon the Survey made by.

John C. Smith, Deputy Surveyor

under his Contract. No. 16.

Dated November 1<sup>st</sup> 1890.

Examination Commenced Aug 29, 1891.

do - Completed, Sept 7, 1891.

Preliminary Oaths of Assistants.

1A

BOOK 1744

We Charlie Tomajnimis  
and Bob Mummie

do solemnly swear that we will well and faithfully execute  
the duties of Chain Carriers; that we will level the chain over  
even and uneven ground, and plumb the tally pins, either by  
sticking or dropping the same; that we will report the true dis-  
tance to all notable objects, and the true length of all lines that  
we assist in measuring, to the best of our skill and ability and  
in accordance with instructions given us in the survey of the  
inspecting the Contract work  
done by Deputy John C. Smith  
on the Moqui Indian Reservation

of the principal base and meridian in the Territory of Arizona.

<sup>his</sup> Charlie Tomajnimis Chainman.

<sup>his</sup> Bob Mummie Chainman.

Subscribed and sworn before me, this 27<sup>th</sup>

day of August 1891

T. D. Childsen

Notary Public.

We R. T. Pullerson and  
Jos. P. Richards 1B

do solemnly swear that we will well and truly perform the  
the duties of Flagman and ax-  
man

BOOK 1744

in the establishment of corners and other duties according to  
instructions given us, and to the best of our skill and ability,  
in the survey of the inspecting the Cant-  
ment work done by Deputy  
John C. Smith on the Miami  
Indian Reservation

of the principal base and meridian in the Territory of Arizona.

R. T. Pullerson  
Jos. P. Richards

Subscribed and sworn to before me this 27<sup>th</sup>  
day of August 1891

T. D. Chilson  
Notary Public.



Hon. Royal A. Johnson

U.S. Surveyor General

Sir:

Pursuant to your instructions bearing date Aug. 18<sup>th</sup> 1891, the undersigned departed, taking one assistant with me who had been over the ground, thereby being familiar with the country, and proceeded by R.R. to the nearest point, thence by private conveyance to the Moai Indian Reservation, reaching Kearns Canon on 25<sup>th</sup>.

On 26<sup>th</sup> moved down to the Moai Indian Village Chi Chamovi. Owing to delay caused by being unable to hire necessary assistants, on

27<sup>th</sup> moved out to Model  
Farm where assisted by Supt,  
Stautler the complement of  
assistants were secured, and  
in the P.M. Rolloled out for the  
Camano Springs. Reached the  
springs at 10 A.M. - 29<sup>th</sup>  
Took an observation on the Sun,  
remaining at said springs  
till after noon; then proceed-  
ed west about 2 1/2 miles, found  
the initial point, photographed  
same and started the line  
on Meridian bet, R's 17 & 18 E.  
previously established by U. S.  
Deputy John C. Smith as follo-  
ws V 1/2

3

BOOK 1744

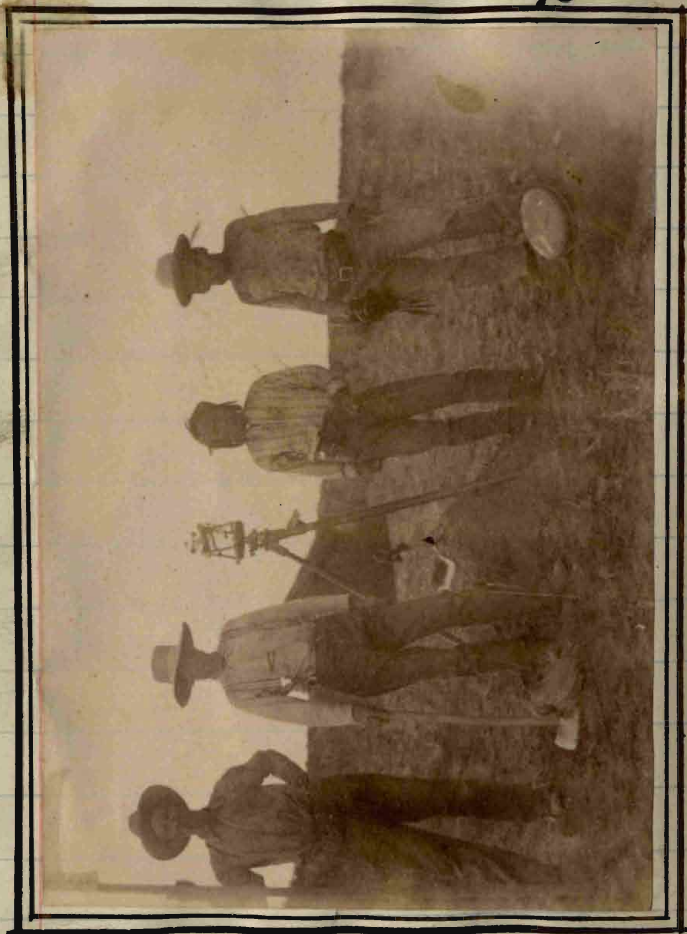
Aug. 29<sup>th</sup> 1891

Reconnoitre line bet. R's 17 &amp; 18 E.

T. 25 N.

Begin at T<sub>p</sub> Cor. bet. R's 17 & 18 E.

on Sixth Standard N. designated



by mound of earth 4<sup>ft</sup> base 2<sup>ft</sup> high  
 and three pits with post 3<sup>in</sup> diameter  
 in easterly pit, situated on Northerly



~~Aug. 29<sup>th</sup> 1897~~

Range Line bet R<sup>s</sup> 17 & 18 E.

T. 25 N.

This slope of Mesa about half way  
from base to top. Said post is  
marked on W. side - R. 17 E. - S. 36  
on N. side - S. C. - T. 25 N. three notches  
on E. side - R. 18<sup>E.</sup> S. 31

Soil loose red sand. No trees

Thence I run N. bet. Secs 31 & 36  
V.  $13^{\circ}50'$  E. as ascertained by  
observation on the Sun.

Descend gradually to level plain

39.87 Mound of earth and two pits.

42.00 Bank - E. & W. - descend

50.70 Run from Camino Springs - 15 lks  
wide - Cour. S.  $70^{\circ}$  W.

70.00 begin to ascend

75.75 Top of ridge, descend

79.85 Mound of earth and four pits  
situate at foot of low ridge  
Cour. E. & W. Mounds and pits  
are found to be of proper size.

~~Aug, 29<sup>th</sup> 1891~~  
Range Line bet. R<sup>s</sup> 17 & 18 E.

Chs. N. bet. Secs, 25 & 30

V. 13° 50' E.

- 10.00 middle of valley; ascend  
23.00 top of ridge, descend  
28.00 Rim of low bluff  
30.50 bottom of valley  
40.03 Mound of earth & two pits  
situate in valley; ascend

Aug, 30<sup>th</sup>

- 70.00 top of ridge; descend  
77.00 foot of ridge; ascend  
80.03 Mound of earth, four pits &  
strike 3<sup>in</sup> S. or, marked on W. side  
R. 17 E. - S. 25 - on E. side  
T. 2.5 N. - S. 19 - on S. side  
R. 18 - S. 30 - on N. side  
S. 2.4. Mound & pits - proper size.  
Loose sandy soil light grass

1 Aug, 29<sup>th</sup> 1891



Aug, 30th 1891

Ranger's Line Mt, R<sup>s</sup> 17 & 18 E.

T. 25 N.

BOOK 1744

- Chs. N. bet. Sees 2.4 to 19  
V. 13° 50' E.
- 2.00 black rocky knob, 30 W, E. of line
- 5.00 top of ridge, cou, S. 70° W.
- 7.00 descend into draw from beehive mountain
- 9.25 Dry, water course from beehive mountain cou, W.
- 25.60 foot of black hills - rim of Mesa, ascend
- 36.00 top of Mesa
- 40.10 monument of black stones on eastern slope of point; descend
- 44.00 foot of ridge
- 80.10 mound of earth and four pits  
Beehive Mt<sup>s</sup> bears S. 67° 45' E.  
Little Butte " N. 12° 45' E.  
Mounds and pits, proper size.  
Soil loose sand; no trees.

Aug, 30<sup>th</sup> 1891

Rangoe Lim bet, R<sup>s</sup> 17 & 18 E.

Chs. N. bet, T. 2.5 N.  
 Sess, 13 & 18  
 V. 13° 50' E.  
 40.05 Mound of earth & two pits  
 80.09 Mound of earth and four pits  
 Beehive Mt. bears S. 51° 30' E.  
 Little Butte " N. 16° E.  
 Broad plain; sand and  
 alluvial soil; level plain.

N. bet, Sess, 12 & 7  
 V. 13° 50' E.  
 40.10 mound of earth and two pits  
 on low point sloping South  
 80.07 mound of earth and four pits  
 and stake 3<sup>in</sup> <sup>notches</sup> marked on S. side  
 R. 17 E. S. 12 - five on E. side  
 R. 18 - S. 7. - on N. side  
 T. 2.5 N. - S. 6 - on W. side - S. 1  
 Little Butte bears N. 19° E.  
 Soil alluvial; level plain

~~Aug, 30<sup>th</sup> 1891~~

8

Range Line T. 25 N. bet. R's 17 & 18 E

chs. N. bet. Sec's, 1 & 6  
V.  $13^{\circ} 50' E$ .

BOOK 1744

40.07 Mound of earth, two pits &  
Stake  $1" \times 2. \frac{1}{2}"$  marked  $\frac{1}{4} S$ .

80.05 Mound of earth  $7 \frac{1}{2}'$  high by  
 $4 \frac{1}{2}'$  high, and six pits.  
No post, stone or mark to  
be found to designate this  
corner; It must however,  
be the corner to Tps 25 & 26 N.  
R's 17 & 18 E.

Little Butte bears N.  $17^{\circ} E$ .

Table Mt " S.  $59^{\circ} E$ .

Soil loose sand; level plane



Aug. 30<sup>th</sup> 1891

BOOK

1744

T. 26 N. bet. R. 17 &amp; 18 E.

Chs N. bet sees 31 & 36  
V.  $13^{\circ} 50' E.$ 49.02 Mound of earth, two pits &  
Stake  $2\frac{11}{16}$  in sar, marked  $\frac{1}{4}$  S.79.70 Mound of earth, four pits and  
Stake  $3\frac{11}{16}$  in sar, marked on S. side

R. 17 E. - S. 36 - on E. side

R. 18 E. - S. 31 - on N. side

T. 26 N. - S. 30 - on W. side

S. 25

Little Butte bears N.  $41^{\circ} 30' E.$ 

Soil loose sand. Good grass

N. bet sees, 25 &amp; 30

V.  $13^{\circ} 50' E.$ 39.73 Mound of earth, two pits &  
Stake  $2\frac{11}{16}$  in dia, marked  $\frac{1}{4}$  S.79.80 Mound of earth, four pits and stake  
 $3\frac{11}{16}$  in sar, marked on N. Cor. four notches  
on N. side

T. 26 N. - S. 19 - on E. side

R. 18 E. - S. 30 - on S. side

R. 17 E. - S. 25 - on W. side

S. 25 - Little Butte - N.  $74^{\circ} 15' E.$

~~Aug. 30th, 1891~~

10

T. 2.6 N. - bet. R<sup>s</sup> 17 & 18 E.

Chs. N. bet. Sees, 24 & 19  
V. 13° 50' E.

BOOK 1744

39.90 mound of earth and two pits  
and stake 1" x 2" <sup>in</sup> marked  $\frac{1}{4}$  S.

80.04 mound of earth and four pits  
This mile runs over level  
country, soil light sand

---

N. bet. Sees, 13 & 18

V. 13° 50' E.

40.02 mound of earth, two pits &  
stake 1" x 2" <sup>in</sup> marked  $\frac{1}{4}$  S.

80.01 mound of earth, four pits  
and stake 3" <sup>in</sup> marked  
on W. side

R. 17 E. - S. 13 - on S. side

R. 18 E. - S. 18 - on E. side

T. 2.6 N. - S. 7 - on N. side

S. 12 - situate on low ridge  
running west.

Soil loose sand, good grass

~~Aug. 30<sup>th</sup> 1891~~

BOOK 1744

T. 2. 6 N. - Range Timber R<sup>s</sup> 17 & 18 E

- Chs. N. bet. Secs, 12 & 7  
V. 13° 50' E.
19. 15 top of ridge - Cour, S. W. descend
22. 85 Small Arroyo: ascend
24. 00 Rocky point 15 lks, E. of line  
point  
and Rocky, 50 lks, W. of line
28. 00 Arroyo - Cour, W.
39. 00 white sand points
39. 90 mound of white sand, two  
pits & stake 2<sup>in</sup> dia, marked  $\frac{1}{4}$  S.
45. 00 descend gradually
74. 00 Arroyo - Cour W.
80. 00 Mound of earth, four pits &  
stake 3<sup>in</sup> dia; marked on N. side
- T. 2. 6 N. - S. 6 - on E. side
- R. 18 E. - S. 7 - on S. side
- R. 17 E. - S. 12 - on W. side
- S. 1 - Situate on low table  
land, sloping W. Soil sandy  
loam; good grass

Aug. 30<sup>th</sup> 1891



Aug. 31<sup>st</sup> 1891

12

Range Line T. 26 N. bet R. 17 & 18 E.

BOOK 1744

Chs. At Cor. to Secs 1 | 6 I took  
an observation on 17 | 7 Polaris

last night and find  
greatest Elongation E. =  
12° 19' 30" which + Azith  
1° 30' 01" = 13° 49' 31" E.

Set my Instrument ac-  
-cordingly and proceed

N. bet. Secs, 1 & 6  
V. 13° 49' 30" E.

40.05 mound of earth, two pits and  
stake 2<sup>in</sup> sq, marked T. S.

80.03 mound of earth 5<sup>ft</sup> bare 3<sup>ft</sup> high,  
four pits and stake 3<sup>in</sup> sq, marked  
on W. side - T. 26 N. - S. 1  
on N. side - R. 17 E. - S. 36  
on E. side - T. 27 N. - S. 31  
on S. side - R. 18 E. - S. 6

This side is over level  
plain. Soil loose sand  
good grass

Aug. 31<sup>st</sup> 1891

Range Lin T. 27 N. bet. R. 17 &amp; 18 E.

BOOK 1744

- Chs. N. bet. Sees, 31 & 36  
V. 13° 49' 30" E.
- 2.55 Sharp bluff 20 ft high; descend
- 5.00 Center of Arroyo 20 fms. wide  
Carr, S. 85° W. ascend
- 8.00 Top of mesa, rolling plain
- 40.00 mound of earth, two pits &  
stake 2<sup>in</sup> S.W. marked 1/4 S.
- 60.00 mound of earth, two pits  
and stake 1 1/2<sup>in</sup> marked 1/16
- 80.00 mound of earth, four pits  
and stake 3<sup>in</sup> S.W. marked on side
- R. 17 E. - S. 36. - on N. W. side  
S. 25 - on N. E. side - T. 27 N. - S. 30  
on S. E. side - R. 18 E. - S. 31
- Soil sandy; good grass

---

N. bet. Sees, 25 & 30  
V. 13° 49' 30" E.

- 20.00 mound of earth, two pits and  
stake 2<sup>in</sup> S.W. marked 1/16
- 40.00 mound of earth, two pits  
- no stake

~~Aug. 31<sup>st</sup> 1891~~

14

Return Line T. 27 N. bet. R. 17 & 18 E.

BOOK 174

Chs N. bet. Secs, 2.5 & 30

59.95 mound of earth, and two pits

80.04 mound of earth, four pits  
and stake 3<sup>in</sup> <sup>marked</sup> on S.W. side

S. 2.4 - on N.W. side - T. 27 N. - S. 19

on N.E. side - R. 18 E. - S. 30

on S.E. side - R. 17 E. - S. 2.5

This line runs over undulating plain. Soil loose sand. good grass.

I will here state; in places, the pits are somewhat filled by drifting sand, and the mounds are somewhat wasted away by the winds; courses and distances however, are practically correct, and the work has evidently been well done. Therefore, from this cor, I run east.



~~Aug 31<sup>st</sup> 1891~~

T. 2.7 N. - R. 18 E.

- Chs. E. bet. Secs, 19 & 30  
V. 13° 49' 30" E.
- 18.82 mound of earth, two pits and  
stake 2<sup>in</sup> S&R, marked 1/16
- 38.75 mound of earth, ~12 lks, N. of line ~  
two pits and stake 2<sup>in</sup> dia  
marked 1/4 S.
- 58.80 mound of earth, two pits and  
stake 2<sup>in</sup> S&R, marked 1/16
- 78.83 mound of earth, four pits and  
stake 3<sup>in</sup> <sup>on the ground,</sup> S&R, marked S. 30.
- S. 19 - R. 18 E. - S. 20. - T. 2.7 N. S. 2.9  
situate on easterly slope of low  
sand ridge. loose sand. Hair grass.

E. bet. Secs, 2.0 &amp; 2.9

V. 13° 49' 30" E.

- 19.95 Mound of earth ~ 7 lks, N. of line ~ two  
pits and stake 2<sup>in</sup> S&R, marked 1/16
- 39.96 mound of earth, two pits and  
stake 2<sup>in</sup> S&R, marked 1/4 S.
- 59.95 mound of earth, two pits and  
stake 2<sup>in</sup> S&R, marked 1/16

~~Aug, 31<sup>st</sup>, 1891~~  
T. 27 N. R. 18 E.

16

BOOK 1744

- Chs. E. bet. Sees, 20 & 29  
V.  $13^{\circ} 49' 30''$  E.
- 79.97 mound of earth and four pits  
situate on ground sloping Westwardly.  
Loose sandy soil; good grass.
- E. bet. Sees, 21 & 28  
V.  $13^{\circ} 49' 30''$  E.
- 19.90 mound of earth, two pits and stake  
2<sup>1/2</sup> S. marked  $\frac{1}{16}$
- 39.95 mound of earth, two pits and stake  
2<sup>1/2</sup> S. marked  $\frac{1}{4}$  S. immediately  
on South side of Trail to <sup>Springs</sup> Talihogan.
- 59.93 mound of earth, two pits and stone  
3x14x18 <sup>in</sup> marked  $\frac{1}{16}$  <sup>set in ground</sup> on low black  
ridge: rocky point 1 ch, S.
- 65.00 cross barren sand stone ridge
- 79.90 mound of earth, four pits and  
stone 3x10x2.0 <sup>not set in ground</sup> marked three,  
situate in valley running to  
the S. W. Fair grass

17  
BOOK 1744

~~Aug. 31<sup>st</sup> 1891~~  
T. 27 N. R. 18 E.

- Chs. E. bet. Sees, 22 & 27  
V.  $13^{\circ} 49' 30''$  E
2. 00 Cross Arroyo, Cour, S. W.
20. 20 mound of earth, two pits and  
stake 2<sup>ins</sup> dia marked  $\frac{1}{16}$
40. 20 mound of earth, two pits and stake  
2<sup>ins</sup> dia, marked  $\frac{1}{4}$  S.
60. 15 mound of earth, two pits and  
stone  $3 \times 10 \times 16$  <sup>set in ground</sup> <sup>ins</sup> marked  $\frac{1}{16}$   
on western slope of table land
80. 10 mound of earth, four pits and  
stone  $4 \times 10 \times 16$  <sup>ins</sup> marked on  
<sup>5 or 6 notches, set in ground</sup>  
E. side, two; situate on western  
slope of ridge; cour, N. & S.

---

E. bet. Sees, 23 & 26  
V.  $13^{\circ} 49' 30''$  E.

6. 00 top of ridge; cour, S.  $40^{\circ}$  W.
19. 95 mound of earth, two pits and <sup>stone</sup>  
<sup>set in ground</sup>  
 $3 \times 8 \times 12$  <sup>ins</sup> marked  $\frac{1}{16}$ , 13 lks,  
N. of line
39. 93 mound of earth, two pits and  
stake 2<sup>ins</sup> dia, marked  $\frac{1}{4}$  S.



~~Aug 31<sup>st</sup> 1891~~

18

T. 27 N. R. 18 E.

BOOK 1744

- Chs. E. bet, Secs. 23 & 26  
V.  $13^{\circ} 49' 30''$  E.
- 59.85 mound of earth, two pits and  
stake  $1\frac{1}{2}$  <sup>ins</sup> dia, marked  $\frac{1}{16}$  S.
- 79.90 mound of earth, four pits and  
stone  $6 \times 6 \times 14$  <sup>ins</sup> marked on S.  
not set in ground  
side, two, on E. side, one north.  
Soil sandy loam; short grass.
- E. bet, Secs. 24 & 25  
V.  $13^{\circ} 49' 30''$  E.
- 20.00 mound of earth, two pits and  
stake  $1\frac{1}{2}$  <sup>ins</sup> dia, marked  $\frac{1}{16}$  S.
- 40.03 mound of earth, ~ 6 lks. S. of line -  
two pits and stake  $1\frac{1}{2}$  <sup>ins</sup> dia,  
marked  $\frac{1}{4}$  S.
- 60.00 mound of earth, two pits and  
stake 2 <sup>ins</sup> dia, marked  $\frac{1}{16}$  S.
- 79.97 mound of earth, four pits and  
stone  $6 \times 6 \times 14$  <sup>ins</sup> marked on  
not set in ground  
N. side, three, situate in level  
open ground. Little grass.

~~Aug. 31st 1891~~

T. 27 N. - R. 19 E.

Chs. E. bet. Secs, 19 & 30  
V. 13° 49' 30" E.

18.75 mound of earth, two pits and  
stake 1 1/2 <sup>ins</sup> dia, marked 1/16 S.

38.82 mound of earth, two pits and stake  
2 <sup>ins</sup> dia, marked 1/4 S.

6 chs, dist,  
A pond of water bears N. 40° W.

58.77 mound of earth, two pits and stake  
2 <sup>ins</sup> dia, marked 1/16 leave level  
ground, and ascend towards bluffs.

78.76 mound of earth, four pits and  
stone 6x5x14 <sup>ins</sup> <sup>hitches</sup> <sup>set in ground</sup> marked five,  
situate on northwesterly slope.  
Soil, loose sand; no grass

E. bet. Secs, 20 & 29  
V. 13° 49' 30" E.

15.00 Arroyo 20 fts. wide; curv, N.

20.05 mound of earth, two pits and  
stake 2 <sup>ins</sup> dia, marked 1/16

40.00 mound of earth, two pits and  
stake 2 <sup>ins</sup> dia, marked 1/4 S.

~~Aug, 31<sup>st</sup> 1891~~

20

T. 27 N. - R. 19 E

BOOK 1744

Chs. E. bet. Secs. 20 & 29  
V.  $13^{\circ} 49' 30''$  E.

60.03 mound of earth, two pits and  
stake  $1\frac{1}{2}$  <sup>ins</sup> dia, marked  $\frac{1}{16}$

80.04 mound of earth, four pits and  
stone  $10 \times 10 \times 20$  <sup>ins</sup> marked on  
notches set in ground  
E. side four. This line runs along  
the mesq, sloping gradually  
to the north.

Soil loose sand; no grass  
So far, I find the work  
well done; therefore, I now  
move over the ridge to the  
next Tp, north.

Aug, 31<sup>st</sup> 1891



Sept. 1<sup>st</sup> 1851  
T. 28 N. bet. R<sup>s</sup> 18 & 19 E.

Chs.

Begin at Cor. to Secs  $\frac{24}{19}$  |  $\frac{25}{30}$   
Designated by mound of  
earth, four pits and stone

$6 \times 6 \times 12 \frac{ins}{17}$  marked on S. side  
two notches, on N. side, four, notches, set in ground the N. W.

Cor. of Model Farm; thence

N. bet. Secs, 24 & 19  
V.  $13^{\circ} 49' 30''$  E.

29.00 mound of earth, two pits and  
stone  $6 \times 6 \times 12 \frac{ins}{17}$  marked  $\frac{1}{16}$ , set in ground

35.00 Arroyo 40 fms, wide, 10 ft deep  
Cours, N.  $34^{\circ}$  W.

40.00 mound of earth, two pits and  
stake  $2 \frac{ins}{17}$  dia, marked  $\frac{1}{4}$  S.

59.97 mound of earth, two pits and  
stone  $3 \times 6 \times 12 \frac{ins}{17}$  marked  $\frac{1}{16}$ , set in ground

80.00 mound of earth, four pits and  
stone  $3 \times 9 \times 12 \frac{ins}{17}$  marked on  
three notches, N. side, three, notches, set in ground on S. side, three, loose  
sandy soil, no grass.

~~Sept. 1<sup>st</sup> 1891~~  
T. 28 N. - R. 19 E.

22

BOOK 1744

- Chs. E. bet. Secs. 18 & 19  
V.  $13^{\circ} 49' 30''$  E.
- 18.30 mound of earth, two pits and  
stone  $3 \times 14 \times 18$  <sup>ins set in ground</sup> marked  $\frac{1}{16}$
- 38.74 mound of earth, two pits and stake  
 $2$  <sup>ins</sup> S&R, marked  $\frac{1}{4}$  S.
- 58.83 mound of earth, two pits and stake  
 $2$  <sup>ins</sup> S&R, marked  $\frac{1}{16}$
- 78.80 mound of earth, four pits and  
stake  $3$  <sup>ins</sup> S&R, marked on N.W.  
side - S. 18 - on N.E. side T. 28 N.  
S. 17 - on S.E. side - R. 19 E. S. 20  
on S.W. side - S. 19; on sand ridge  
sloping north. Red top grass.
- 
- E. bet. Secs. 17 & 20  
V.  $13^{\circ} 49' 30''$  E.
- 19.98 mound of earth, two pits and stake  
 $2$  <sup>ins</sup> S&R, marked  $\frac{1}{16}$
- 39.90 mound of earth, two pits and  
stake  $2$  <sup>ins</sup> S&R marked  $\frac{1}{4}$  S. - said  
mound is 6 lks, N. of line

~~Sept 1st 1897~~  
T. 28 N. R. 19 E.

- Chs. E. bet. Secs, 17 & 20  
V.  $13^{\circ} 49' 30''$  E.
- 60.05 mound of earth, two pits and  
stake  $1\frac{1}{2} \times 2$  <sup>ins</sup> marked  $\frac{1}{16}$
- 75.20 Arroyo 75 lks, wide 15 ft deep  
Carr. N.
- 79.96 mound of earth, four pits and  
stone  $6 \times 6 \times 12$  <sup>ins</sup> marked on  
<sup>notches, set in ground</sup>  
E. side four, Situate on Mesa  
South side of outlet to  
Kearns Cañon

E. bet. Secs, 16 & 21  
V.  $13^{\circ} 49' 30''$  E.

- 19.97 mound of earth, two pits and  
stake  $1\frac{1}{2} \times 2$  <sup>ins</sup> marked  $\frac{1}{16}$
- 39.90 mound of earth, two pits and  
stake  $2$  <sup>ins</sup> dia, marked  $\frac{1}{48}$ .
- 59.87 mound of earth, two pits and  
stake  $3$  <sup>ins</sup> dia, marked  $\frac{1}{16}$
- 80.00 mound of earth, four pits and stone  
<sup>notches, set in ground</sup>  
 $2 \times 8 \times 12$  <sup>ins</sup> marked on E. side through  
<sup>return west.</sup>  
I am satisfied with the work, and,  
Sept 1st 1897



Sept. 2<sup>nd</sup> 1891

24

T. 28 N. - R. 18 E.

BOOK 1744

- Chs. Begin at Cor, to secs, 

13	18
24	19

  
on R<sup>ing</sup> line and run W.  
bet. Secs. 13 & 24  
V. 13° 49' 30"
- 8.50 cross low sand ridges; red top grass
- 17.60 enter cornfield
- 20.03 mound of earth, two pits and  
stone 3x8x14<sup>ins</sup> marked <sup>set in</sup> top ground
- 24.00 leave cornfield
- 28.00 enter cornfield
- 33.00 leave cornfield
- 36.25 Wagon road from Model Farm  
to bluffs below village Chichamovi  
Covr, S. 28° W.
- 40.04 mound of earth, two pits and  
stake 2x3<sup>ins</sup> marked T. 28 N. S. 30  
1/4 S. - situate 4 lks, S. of line.
- 60.00 mound of earth, two pits and  
stake 2<sup>ins</sup> S or marked 1/6

25  
BOOK 1744

~~Sept, 2<sup>nd</sup> 1891~~  
T. 2, 8 N. - R. 18 E.

Chs. W. bet, Secs, 13 & 24  
V. 13° 49' 30" E.

80.00 mound of earth, four pits and  
stake 3<sup>ins</sup> set, marked on W. side

T. 28 N. - S. 13. - on N. side

R. 18 E. - S. 24. - on E. side

S. 23. - on S. side - S. 14. situate  
in low flat ground. no grass

This Cor is 18 lks, S. of line.

W. bet, Secs, 14 & 23  
V. 13° 49' 30"

20.04 mound of earth, two pits and stake  
1 1/2 x 2<sup>ins</sup> marked 4/16

23.00 Corner of Cornfield lying to the  
South: Cross dry, water course  
50 lks, wide, 7 ft deep, course N. 50° W

26.50 enter Cornfield

30.70 leave Cornfield

39.40 new Hoggan on line.

40.03 Stone 1x10x2.4<sup>ins</sup> set firmly  
in ground, marked 1/4. no  
mound or pits.

Enter Mellan patch

~~Sept. 2<sup>nd</sup> 1891~~

26

T. 28 N. - R. 18 E. BOOK 1744

- Chs. W. bet. Secs, 14 & 23  
V.  $13^{\circ} 49' 30''$
- 44.00 leave melon patch
- 49.00 enter cornfield
- 60.00 monument of stones 3<sup>ft</sup> high  
Set in ground  
and stone  $3 \times 12 \times 14$  <sup>ins</sup> marked  $\frac{1}{16}$
- 61.00 leave cornfield; ascend
- 63.25 Wagon road to Tuba City - S.  $30^{\circ}$  W.
- 79.27 monument of stones 4<sup>ft</sup> base by  
3<sup>ft</sup> high, and stone  $5 \times 12 \times 2.9$  <sup>ins</sup>  
marked on S. side three, on E. side, two,  
Indian village Walpi R. Hoppi on  
the upper Mesa; bears N.  $30^{\circ}$  W.  
about one mile dist,

Sept. 2<sup>nd</sup> 1891



27  
BOOK 1744

~~Sept. 3<sup>rd</sup> 1891~~

T. 28 N. - R. 18 E.

- Chs. S. bet Secs, 22 & 23  
V. 13° 49' 30" E.
- 17.30 Wagon road to Tuba City - S. 7 1/2° W.
- 20.00 Monument of stones, and stone  
10x12x18 <sup>ins</sup>/<sub>7</sub>, marked 1/8 set in ground
- 39.97 mound of earth and two pits  
in flat covered with greasewood
- 50.30 enter cornfield
- 54.60 Dry, water course 25 fms, wide  
6 ft deep - Cour, S. 30° W.
- 60.00 mound of earth, two pits and  
stake 2 <sup>ins</sup>/<sub>8</sub> dia, marked 1/16  
A cottonwood tree 6 <sup>ins</sup>/<sub>4</sub> dia,  
largest one of five - bears  
S. 4° E. 79 fms, dist; blazed  
and marked; but is so  
grown over, cannot read the  
marks; situatn in cornfield.
- 67.00 leave cornfield
- 80.02 mound of earth, four pits and stake  
37x10x14 <sup>ins</sup>/<sub>2</sub> marked two not set in ground  
in low flat. large greasewood brush

~~Sept. 31st 1891~~

T. 28 N. - R. 18 E.

28

BOOK 1744

Chs. S. bet. Secs. 26 & 27  
V. 13° 49' 30" E.

20.05 mound of earth, two pits and  
stone 3x10x14<sup>ins</sup> marked  $\frac{1}{16}$  set, <sup>in ground</sup>

40.02 mound of earth, two pits and  
stone 2x10x12<sup>ins</sup> marked  $\frac{1}{4}$  set, <sup>in ground</sup>  
ascend gradually

60.04 mound of earth, two pits and  
stone 8x10x16<sup>ins</sup> marked  $\frac{1}{16}$  set in <sup>ground</sup>  
this stone is 6 Ws. W. of line.

80.10 mound of earth, four pits and  
stone 4x10x16<sup>ins</sup> marked on E. <sup>in ground</sup>  
Side two notches S. side <sup>notch</sup> - white sage

W. bet. Secs. 27 & 34  
V. 13° 49' 30"

19.90 mound of earth, two pits and stone  
3x10x14<sup>ins</sup> marked  $\frac{1}{16}$ , <sup>set in ground</sup> 6 Ws. S. of line.

39.83 mound of earth, two pits and stake  
2<sup>ins</sup> dia. marked  $\frac{1}{4}$  S. - 16 Ws. S. of line

59.70 mound of earth, two pits and stake  
1 $\frac{1}{2}$ "<sup>ins</sup> dia. marked  $\frac{1}{16}$  - 9 Ws. S. of line  
situate in <sup>thick</sup> Sage brush

BOOK 1744

~~Sept 3rd 1891~~

T 28 N. - R. 18 E.

chs, W bet, Secs, 27 & 31  
V. 13° 49' 30" E.

79.50 mound of earth, four pits and stone  
notches, set in ground  
6x6x1 1/2<sup>ins</sup> marked three, & situate in  
white sage. some grass. this  
Cor, is 6 lks, S. of line

W. bet, Secs, 28 & 33  
V. 13° 49' 30" E.

3.10 left bank of Barranca 90 lks,  
Wide, 20 ft deep: Cour, S. 42° W.

5.30 left bank of Barranca 2.30 chs,  
Wide, 20 ft deep: Cour, S. 40° W.

20.03 mound of earth, two pits and  
stake 2x3<sup>ins</sup> marked 1/16 - sage brush

39.97 mound of earth, two pits and  
stake 1 1/2 x 2<sup>ins</sup> marked 1/4 in small  
arrayo.

60.00 mound of earth and stake 2<sup>ins</sup>  
Sar, marked 1/16 situate at foot  
of left bank of Barranca  
which is 1.50 chs, wide and 2.0  
ft deep.

62.25 A barranca 50 lks, wide and



~~Sept, 3<sup>rd</sup> 1891~~

T. 2.8 N. R. 18 E.

BOOK 1744

Chs. W. bet. Secs, 2.8 & 3.3  
V. 13° 49' 30" E  
2.0 ft deep comes in from N. E.

63.09 leave baranca

80.10 mound of earth, four pits and  
stone 4x8x12 <sup>in</sup> marked <sup>around</sup> four, set in  
16 lks. S. of line. White Sage.

W. bet. Secs, 2.9 & 3.2  
V. 13° 49' 30"

16.09 enter cornfield, ascend.

19.09 leave cornfield - fidel lies N. of line

20.00 mound of earth, two pits and stone  
2x14x16 <sup>in</sup> marked <sup>1/6</sup> set in ground

40.00 mound of earth, two pits and stake  
2 <sup>in</sup> S. of line, marked 1/4 - 16 lks. N. of line

60.12 mound of earth, two pits and stake  
2 <sup>in</sup> dia, marked 1/16 - 18 lks. N. of line

64.50 enter cornfield

67.20 leave cornfield

80.19 mound of earth, four pits and  
stone 6x8x14 <sup>in</sup> marked <sup>in ground</sup> five <sup>notches</sup> set  
loose sand no grass

~~Sept 3<sup>rd</sup> 1891~~  
T. 28 N. - R. 18 E.

BOOK 1744

- Chs. W. bet. Secs. 30 & 31  
V. 13° 49' 30"
- 19.97 mound of earth, two pits and stone  
Set in ground  
3x8x12<sup>ins</sup> marked  $\frac{7}{8}$  6 lks, S. of line
- 22.00 enter cornfield - ascending
- 26.00 leave cornfield - is N. of line
- 40.00 mound of earth, two pits and  
stake 2<sup>ins</sup> S. marked  $\frac{1}{4}$  S.
- 50.00 enter cornfield
- 53.00 leave cornfield
- 58.00 Arroyo 20 lks, wide: 7<sup>ft</sup> deep - S. 24° E.
- 59.97 mound of earth, two pits and stone  
Set in ground  
5x10x16<sup>ins</sup> marked  $\frac{1}{4}$  8 lks, S. of line
- 78.80 intersect Meridian 40 lks, N. of  
See, Cor, designated by mound  
of earth, four pits and stone 6x  
10x16<sup>ins</sup> marked on N. side five  
notches, set in ground  
on S. side one, situate on low sand  
ridge. Red top grass to S. E.

~~Sept. 3rd 1891~~  
T. 28 N. - R. 17 E.

32

BOOK 1744

- Chs. W. bet. Secs, 25 & 36  
V.  $13^{\circ} 49' 30''$  E.
- 4.30 Wagon road to Tuba City - S.  $80^{\circ}$  - W. <sup>dist.</sup>
- 10.40 Cross trail to water - N.  $56^{\circ}$  - W. 1 mile
- 15.00 N. W. Cor. of Cornfield & melon patch
- 20.03 monument of stones 3 ft base, 2 ft  
high and stone  $8 \times 10 \times 14$  <sup>ins</sup> marked  
set in ground  
 $\frac{1}{16}$
- 40.02 mound of earth, two pits and stone  
set in ground  
 $8 \times 10 \times 14$  <sup>ins</sup> marked  $\frac{1}{4}$ , ascend
- 60.00 mound of earth, two pits and stone  
 $1 \times 10 \times 12$  <sup>ins</sup> marked  $\frac{1}{16}$  set in ground
- 80.01 monument of stones 3 ft base 2 ft  
high, and stone  $4 \times 8 \times 14$  <sup>ins</sup> marked  
mostly set in ground  
over Chimney Rock - 20 ft base by  
60 ft high bears N.  $48^{\circ}$  - W.

---

W. bet. Secs, 26 & 35  
V.  $13^{\circ} 49' 30''$  E.

- 1.00 Barranca 40 lks, wide - 15 ft deep - S.
- 20.00 mound of earth, two pits and  
stone  $4 \times 8 \times 12$  <sup>ins</sup> marked  $\frac{1}{16}$  set in <sup>ground,</sup>  
at foot of ridge, 50 lks, W. of water, <sup>trail</sup>



~~Sept. 3<sup>rd</sup> 1891~~

T. 28 N. - R. 17 E.

- Chs. W. bet. Secs, 26 & 35  
 V. 13° 49' 30" E.
- 24.00 top of hill, descend
- 27.00 Center of arroyo 50 lks, wide 18 ft  
 deep; Cour, S. ascend
- 32.00 top of hill. descend
- 34.00 Arroyo 50 lks, wide, 20 ft deep - S.
- 40.00 mound of earth, two pits and stone  
 set in ground  
 2x16x24 <sup>ins</sup> marked  $\frac{7}{11}$  on top of ridge  
 Chimney rock bears N. 5° 15' W.  
 Indian village Machanglovi lies  
 immediately beyond said Chim-  
 ney rock.
- 42.00 begin to descend
- 48.50 Center of arroyo 50 lks, wide, 20 ft  
 deep; Cour, S. ascend.  
 Conn N. 37 S.
- 50.50 cross main trail to Machanglovi
- 53.00 top of ridge
- 60.06 monument of stones 3 ft base, 2 ft  
 high and stone 3x14x20 <sup>ins</sup> marked  
 set in ground  
 $\frac{16}{11}$  on western slope of ridge; descend

~~Sept, 3<sup>rd</sup> 1891~~  
T. 28 N. - R. 17 E.

34  
BOOK 1744

Chs. W. bet, Secs, 26 & 35  
V. 13° 49' 30" E.

70.00 Cross main trail to Indian village  
Chipowlovi

80.10 monument of stones 2 1/2 ft base  
by 4 1/2 ft high and stone 4 x 12 x  
<sup>notches, set in ground</sup>  
2.0 ins marked there, on E. side of  
trail from Chipowlovi to valley.

W. bet, Secs, 27 & 34  
V. 13° 49' 30" E.

20.00 mound of earth, two pits and stone  
<sup>set in ground</sup>  
3 x 15 x 2.0 ins marked 1/16 over rolling ground

35.00 N.W. Cor. of field of Sunflowers,  
pumpkins and melons, S. of line

40.00 monument of stones 2 ft base 2 ft  
high and stone 2 x 12 x 16 ins  
<sup>set in ground</sup>  
marked 1/4 in flat. ascend

60.00 monument of stones, 2 ft base 2 ft  
high and stone 2 x 10 x 14 ins  
<sup>set in ground</sup>  
marked 1/16 on barren hill.

80.00 monument of stones 2 1/2 ft base, 2 ft high  
and stone 2 x 12 x 2.4 ins marked four notches  
situate on barren point sloping S.

~~Sept. 3<sup>rd</sup> 1891~~  
T. 28 N. - R. 17 E.

BOOK 1744

Chs. S. bet. Secs. 33 & 34  
V.  $13^{\circ} 49' 30''$  E.

20.04 monument of  $2\frac{1}{2}$  ft base 3 ft high  
and stone  $2 \times 14 \times 20$  ins marked  
set in ground  
 $\frac{1}{16}$  on southern slope of hill.

40.10 monument of stones 2 ft base, 2 ft high  
and stone  $2 \times 12 \times 16$  ins marked  
set in ground  
 $\frac{1}{4}$  on low ridge. Over rolling brook

60.12 mound of earth, two pits and  
stone  $2 \times 10 \times 14$  ins marked  $\frac{1}{16}$  set in ground

80.03 mound of earth, four pits and  
notches, on E. & W. edges - set in ground  
stone  $2 \times 10 \times 14$  ins marked - three;  
on ground sloping S. no grass

~~Sept. 3<sup>rd</sup> 1891~~



Sept 4<sup>th</sup> 1891

Top, line bet, 27828 N-R. 17 E.

BOOK 1744

- Chs, S. bet, Secs, 3 & 4 - T. 27 N.  
V. 13° 49' 30" E.
- 20.30 mound of earth, two pits and stone 2x10x14<sup>ins</sup> marked  $\frac{1}{16}$  set in ground, 11 lks, E. of line
- 35.00 Cut N.W. Cor, of cornfield
- 40.33 mound of earth, two pits and stone 2x10x16<sup>ins</sup> marked  $\frac{1}{4}$  set in ground
- 60.03 mound of earth, two pits and stone 2x12x16<sup>ins</sup> marked  $\frac{1}{16}$  set in ground
- 80.09 mound of earth, four pits and stone 6x6x16<sup>ins</sup> marked five notches

W. bet, Secs, 4 & 9 - T. 27 N. - R. 17 E.  
V. 13° 49' 30" E.

- 1.50 Arroyo 50 lks, 8 ft deep; Cour, S.
- 9.00 Cross Wagon road from Madel Farm, to Flagstaff - Cour, N. 72° W.
- 18.00 Cross same road - Cour, S. 80° W.
- 20.03 mound of earth, two pits and stone 4x8x12<sup>ins</sup> marked  $\frac{1}{16}$  set in ground, good grass
- 40.00 mound of earth, two pits and stone 4x8x14<sup>ins</sup> marked  $\frac{1}{4}$  set in ground this cor, is in Beansfield; 26 lks, N. of line

~~Sept. 4th 1891~~

T. 27 N. - R. 17 E.

BOOK 1744

Chs, W. bet. Secs, 4 & 9  
V. 13° 49' 30" E.

44.50 line passes between two cottonwood  
trees 12<sup>ins</sup> dia, about 30ft apart, <sup>N. & S.</sup>

60.00 mound of earth, two pits and  
and stone 2x10x14<sup>ins</sup> <sup>in ground</sup> marked <sup>1</sup>/<sub>16</sub> set <sup>can, S.</sup>

74.50 dry wash 1.60 chs, wide, 20ft deep

80.04 mound of earth, four pits and  
stone 3x10x16<sup>ins</sup> marked four notches set  
in ground, sloping south.

W. bet. Secs, 5 & 8  
V. 13° 49' 30" E.

12.97 mound of earth, two pits and stone  
2x8x12<sup>ins</sup> <sup>set in ground</sup> marked <sup>1</sup>/<sub>16</sub> - 10 lbs, N. of line

32.90 mound of earth, two pits and stake  
2<sup>ins</sup> dia, marked <sup>1</sup>/<sub>4</sub>

60.03 mound of earth, two pits and stake  
2<sup>ins</sup> dia, marked <sup>1</sup>/<sub>16</sub> - 6 lbs, N. of line

66.40 enter cornfield

76.00 leave cornfield

80.04 mound of earth, four pits and  
stone 2x10x14<sup>ins</sup> <sup>set in ground</sup> marked five <sup>notches</sup>

~~Sept 4<sup>th</sup>, 1891~~  
T. 27 N. - R. 17 E.

38

BOOK 1744

- Chs. W. bet, Secs, 6 & 7  
V.  $13^{\circ} 49' 30''$  E.
- 19.96 mound of earth and two pits.
- 40.02 mound of earth, two pits and  
stake  $2\frac{1}{4}$  ins, marked  $\frac{1}{4}$ ; is  
2.0 Ws, S. of line
- 60.05 mound of earth, two pits and  
stake  $1 \times 2\frac{1}{4}$  ins marked  $\frac{1}{16}$
- 78.82 mound of earth, four pits and  
stone  $6 \times 8 \times 14\frac{1}{4}$  ins <sup>notches</sup> marked five, set in  
on R. line bet, 16 & 17 E.

High bluffs  $2\frac{1}{2}$  miles to North

W. bet, Secs, 4 & 12 R 16 E  
V.  $13^{\circ} 49' 30''$  E.

- 7.50 Arroyo 20 Ws, wide 6 ft deep; Cour, S.
- 17.00 enter cornfield
- 20.00 no visible signs of corner.

I find however, a stone  $3 \times 8 \times$   
 $12\frac{1}{4}$  ins marked  $\frac{1}{16}$  lying <sup>by</sup> hill of  
corn -  $8.35^{\circ}$  E. 2.2 Ws, dist;

Evidently, this corner has been  
obliterated, and the stone removed.



~~Sept. 4<sup>th</sup> 1891~~  
T. 27 N. - R. 16 E.

BOOK 1744

Chs. W. bet. Sees, 1 & 12  
V.  $13^{\circ} 49' 30''$  E.

23.00 leave cornfield

40.02 mound of earth, two pits and  
stake 2<sup>ins</sup> dia, marked  $\frac{1}{16}$  S. - 111ks,  
S. of line. Summit. now desc-  
end to the Oriibi Valley

59.98 mound of earth, two pits and  
stake 2<sup>ins</sup> dia, marked  $\frac{1}{16}$  S.

80.00 mound of earth, four pits and  
stone 5x10x18<sup>ins</sup> marked - five, set,  
in Oriibi Valley: White sars & Sarcato

W. bet. Sees, 2 & 11  
V.  $13^{\circ} 49' 30''$  E.

19.97 mound of earth, two pits and stone  
5x6x10<sup>ins</sup> marked  $\frac{1}{16}$  - Sarcato

39.96 mound of earth, two pits, and  
stake 2<sup>ins</sup> dia, marked  $\frac{1}{16}$  S.

59.92 mound of earth two pits and  
stake 1x2<sup>ins</sup> marked  $\frac{1}{16}$  on left  
bank of small arroyo

~~Sept. 4<sup>th</sup> 1891~~  
T. 27 N. - R. 16 E.

BOOK 1744

Ms. W. bet. Secs, 2 & 11  
V. 13° 49' 30" E. pits  
79.86 mound of earth, four and stake  
2x3<sup>ins</sup> marked on N. side  
T. 27 N. - S. 2 - on E. cor, <sup>notches,</sup> two on  
S. E. side - R. 16 - S. 11 - on S. W. side  
S. 10 - five <sup>notches</sup> - on N. W. side - S. 3  
in flat; white sage and Saeaton.

W. bet. Secs, 3 & 10  
V. 13° 49' E.  
2.9.10 mound of earth, two pits and  
stone 3x8x12<sup>ins</sup> marked <sup>ground</sup> 1/6 set in  
40.08 mound of earth, two pits and  
stone 4x8x14<sup>ins</sup> marked <sup>ground</sup> 7/8 set in,  
6 lks, S. of line

43.00 Cross arroyo: cairn, S.

60.04 mound of earth, two pits and stone  
2x10x16<sup>ins</sup> marked 1/6 set in ground

80.11 mound of earth, four pits and  
stone 4x8x12<sup>ins</sup> <sup>notches</sup> marked three, set in  
on western slope of low sand  
hill; about middle of Oribi Valley  
Sept. 4<sup>th</sup> 1891

Sept, 5<sup>th</sup> 1891  
T. 27 N. - R. 16 E.

BOOK 1744

Chs. N. bet. Secs, 3 & 4  
V. 13° 49' 30" E.

20.02 mound of earth, two pits and stone  
set in ground  
4x8x12<sup>ins</sup> marked  $\frac{1}{16}$  foot of sand hill

39.98 mound of earth, two pits and stone  
set in ground  
2x10x12<sup>ins</sup> marked  $\frac{1}{4}$ , 9 lks. W. of line

60.00 mound of earth, two pits and  
stone 4x8x16<sup>ins</sup> marked  $\frac{1}{16}$  set in ground

80.09 mound of earth, four pits and  
notches on E. & W. edges, set in ground  
stone 10x12x16<sup>ins</sup> marked three,

on Tp. line: White sage. no grass

T. 28 N. - R. 16 E.

N. bet. Secs, 33 & 34  
V. 13° 49' 30" E.

20.00 mound of earth, two pits and stake  
2<sup>ins</sup> dia, marked  $\frac{1}{4}$  S. - low sand ridge

40.12 mound of earth, two pits and stake  
2<sup>ins</sup> dia, marked  $\frac{1}{4}$  S. - White sage

59.94 mound of earth, two pits and stake  
2<sup>ins</sup> dia, marked  $\frac{1}{4}$  S. - bunch grass

79.95 mound of earth, four pits and stone  
set in ground notches  
6x12x18<sup>ins</sup> marked three - White sage



~~Sept, 5<sup>th</sup>, 1894~~

42

T. 28 N. - R. 16 E.

BOOK 1744

Chs. N. bet, Secs, 27 & 28  
V. 13° 49' 30" E.

- 19.97 mound of earth, two pits and stone  
3x8x12<sup>ins</sup> marked  $\frac{1}{16}$  set in ground
- 39.93 mound of earth, two pits and stone  
2x6x12<sup>ins</sup> marked  $\frac{1}{4}$  set in ground
- 59.96 mound of earth, two pits and stake  
1 $\frac{1}{2}$  dia, marked  $\frac{1}{4}$  S.
- 80.00 mound of earth, four pits and stone  
and two notches, ground  
4x10x16<sup>ins</sup> marked three, set in ~~ground~~

N. bet, Secs, 21 & 22.  
V. 13° 49' 30" E.

- 20.00 mound of earth, two pits and stake  
1x2<sup>ins</sup> marked  $\frac{1}{16}$  S. - bunch grass
- 39.92 mound of earth, two pits and stake  
1x2<sup>ins</sup> marked  $\frac{1}{4}$  S. - low ground
- 60.00 mound of earth, two pits and stake  
1x2<sup>ins</sup> marked  $\frac{1}{16}$  S. - Sage brush
- 80.00 mound of earth, four pits and stone  
notches,  
6x8x14<sup>ins</sup> marked four, set in ground  
White Sage and bunch grass

~~Sept. 5<sup>th</sup>, 1891~~  
T. 28 N. - R. 16 E.

BOOK 1744

- Chs. N. bet, Secs, 15 & 16
- 20.00 mound of earth, two pits and stone  
2x10x16<sup>in</sup> marked <sup>set in ground</sup>  $\frac{1}{16}$  N. 13<sup>th</sup> W. of line  
Large Cornfields W. of line
- 29.00 enter large, thick sage brush
- 40.00 Center of water course from the  
bluffs; 70 fts, wide, 12<sup>ft</sup> deep  
Covr, S. 46° W.
- 40.50 mound of earth, two pits and  
stake 2<sup>in</sup> dia, marked  $\frac{1}{16}$  S. W. C.
- 45.85 leave sage brush, and enter <sup>S. W. Cor,</sup> Cornfield,
- 60.10 mound of earth, two pits and stake  
2<sup>in</sup> dia, marked  $\frac{1}{16}$  in thick brush
- 72.00 leave brush, cut S. W. Cor, of cornfield
- 80.07 mound of earth, four pits and stake  
3<sup>in</sup> dia, marked T. 28-S. 10-R. 16 E-S. 15  
<sup>notches</sup>  
four, S. 16 - S. 9 - in overflow flat.
- White house in Oriibi village  
bears N. 18° 15' W. about two  
miles dist.

~~Sept, 5th 1891~~  
T. 28 N. - R. 16 E.

44

BOOK 1744

Chs, E. bet. Secs, 10 & 15

.50 enter Cornfield

20.00 mound of earth, two pits and  
stake 2<sup>ins</sup> dia, marked 1/16

40.03 mound of earth, two pits and stake  
2<sup>ins</sup> dia, marked 1/4 S. melon patch

45.00 leave Cornfield

51.00 enter Cornfield

55.00 leave Cornfield

60.03 mound of earth, two pits and stake  
2<sup>ins</sup> dia, marked 1/16 S.

80.06 monument of stones 3ft base 2ft  
high, and stone 5x8x14<sup>ins</sup>  
and two, netels,  
marked four, set in ground  
slapping W. I am satisfied  
with the work in this Tp,  
and now go for Honannas  
Springs, near S. W. Cor, of T.  
27 N. - R. 16 E.

Sept, 5th 1891



Sept, 6<sup>th</sup> 1891

T. 27 N. - R. - 15 E.

BOOK

1744

Chs,	Begin at Cor, to Secs, 26	25
	and run S. bet, Secs, 35-36	36

Having no field notes of this Contract-work, I am necess-  
-sarily, <sup>compelled</sup> to run as I now do,  
to ascertain the exterior  
limits, or boundary of the work.  
Therefore I run

S. bet, Sec, 35 & 36  
V.  $13^{\circ} 49' 30''$  E.

- 20.00 mound of earth, two pits and  
stone  $4 \times 6 \times 12$  <sup>ins</sup> marked  $\frac{1}{16}$  set in <sup>ground</sup>
- 49.00 mound of earth, two pits and  
stone  $3 \times 7 \times 12$  <sup>ins</sup> marked  $\frac{1}{4}$  set in <sup>ground</sup>
- 45.00 Honanus's new house bears  
N.  $36^{\circ} 45'$  E. <sup>to</sup>
- 18.00 foot of bluff. ascend  
Honanus new house - N.  $88^{\circ}$  E.
- 54.00 top of bluff.
- 60.00 mound of earth, two pits  
and stone  $3 \times 8 \times 12$  <sup>ins</sup> set in <sup>ground</sup> marked  $\frac{1}{16}$

~~Sept, 6<sup>th</sup> 1891~~

T 27 N. - R. 15 E.

46

BOOK 1744

Chs, S. bet Sees, 35 & 36  
V.  $13^{\circ} 49' 30''$  E.

20.00 I find no visable signs of  
Corner. Therefore, I run W.

20.00 No signs of any Corner,

40.00 No signs of any Corner.

Therefore, I return to Car,  
to Sees,  $\frac{26}{35} | \frac{2.5}{36}$  and run  
W. bet, Sees, 26 & 35  
V.  $13^{\circ} 49' 30''$  E.

4.00 enter cornfield

20.06 mound of earth, two pits and  
stone  $2 \times 16 \times 20$  <sup>ins</sup> marked  $\frac{1}{16}$  set in <sup>a round</sup>

40.08 mound of earth, two pits and  
stone  $5 \times 10 \times 14$  <sup>ins</sup> marked  $\frac{1}{4}$  set in <sup>a round</sup>  
at westerly edge of cornfield

46.00 foot of mesq; ascend

48.50 top of mesq; - Cor. of rim, N. & S.

60.00 no car, to be found:

80.00 no car, to be found

Sept, 6<sup>th</sup> 1891

Sept, 1<sup>st</sup>, 1891  
T 27 N. R. 15 E.

BOOK 1744

- Chs. Begin at Cor. to Secs, 2.6 | 2.5  
and run 35 | 36
- Es. bet. Secs, 25 & 36  
V. 13° 49' 30" E.
- 8.00 enter cornfield
- 9.00 Stone 5x10x18<sup>ins</sup> marked  $\frac{1}{16}$   
set firmly in ground, mound  
and pits, evidently obliterated.
- 30.00 leave cornfield
- 49.00 mound of earth, two pits and  
stone 3x10x14<sup>ins</sup> in ground  
marked  $\frac{1}{4}$  set,  
From last mentioned  $\frac{1}{4}$  Cor. from  
N. through center of Sec, 2.5  
V. 13° 49' 30" E.
- 9.90 wagon road from Model Farm  
to Flagstaff
- 20.15 mound of earth, two pits and  
stake 2<sup>ins</sup> dia, marked  $\frac{1}{16}$
- 27.90 enter cornfield
- 40.18 mound of earth and stone  
2x8x12<sup>ins</sup> marked  $\frac{1}{4}$  set in,  
Pits, filled by drifting sands



~~Sept, 7th 1891~~

T. 2.7 N. - R. 15 E.

48

BOOK 1744

- Chs. N. through center of sec, 2.5  
v.  $13^{\circ} 49' 30''$  E.
- 49.00 leave Cornfield
- 60.18 mound of earth, two pits and  
stone  $3 \times 10 \times 14$  <sup>ins</sup> marked  $\frac{1}{16}$  set in  
ground,  
13 lks, E. of line
- 80.08 mound of earth, two pits and  
stake  $1\frac{1}{2} \times 2$  <sup>lvs</sup> marked  $\frac{1}{4}$  S.
- 
- From last mentioned  $\frac{1}{4}$  Cor,  
I run - E. bet, Secs, 2.4 & 2.5  
v.  $13^{\circ} 49' 30''$  E.
- 29.04 mound of earth, two pits and  
stone  $4 \times 8 \times 16$  <sup>ins</sup> marked  $\frac{1}{16}$  set in  
ground
- 27.95 wagon road to Filz's till
- 40.00 mound of earth, four pits and  
stone  $2 \times 12 \times 16$  <sup>ins</sup> marked on S.  
<sup>notches,</sup>  
side two, set in ground on R.  
line bet, R<sup>s</sup> 15 & 16 E.

~~Sept. 7<sup>th</sup> 1891~~  
 T. 27 N. bet, R<sup>s</sup> 15 & 16 E. 1744

BOOK

chs. N. bet, Secs, 24 & 19  
 V. 13° 49' 30" E.

- 7.70 Road to Flagstaff-cour, S. 80° W.  
 20.04 mound of earth, two pits and  
 stake 1x2<sup>ins</sup> marked 1/16  
 40.06 mound of earth, two pits and  
 stone 2x8x12<sup>ins</sup> marked <sup>ground</sup> 1/4 set in,  
 57.20 main channel running down  
 the Gribi Valley - 1.50 chs, wide,  
 12<sup>ft</sup> deep; Cour, S. 48° W.  
 60.10 mound of earth, two pits and  
 stake 2<sup>ins</sup> dia, marked 1/16 S.  
 80.16 mound of earth, four pits and  
 stone 4x6x12<sup>ins</sup> <sup>netles, in ground</sup> marked <sup>two</sup> set,

N. bet, Secs, 13 & 18  
 V. 13° 49' 30" E.

- 20.00 mound of earth, two pits and  
 stake 2<sup>ins</sup> dia, marked 1/16  
 20.04 mound of earth, two pits and  
 stake 2<sup>ins</sup> dia, marked 1/4 S.  
 60.08 mound of earth, two pits and  
 stake 1x2<sup>ins</sup> marked 1/16 S.

~~Sept 7<sup>th</sup> 1891~~

50

T. 2. 7 N. bet R<sup>s</sup> 15 & 16 E.

BOOK 1744

Chs, N. bet, Secs, 13 & 18  
V. 13° 49' 30" E.

80.19 mound of earth, four pits and  
stone 4x8x12<sup>in</sup> <sup>notches, in ground</sup> marked - four set

N. bet, Secs, 12 & 7  
V. 13° 49' 30" E.

79.13 mound of earth, two pits and  
stake 1x2<sup>in</sup> marked  $\frac{1}{16}$  S. - 30 lbs,  
W. of trail from Oribi Village to  
Hanannas Springs.

40.05 mound of earth, two pits and stake  
2<sup>in</sup> dia, marked  $\frac{1}{4}$  S.

60.06 mound of earth, two pits and  
stake 1x2<sup>in</sup> marked  $\frac{1}{16}$

80.20 mound of earth, four pits and  
stake 2<sup>in</sup> dia, marked - S. E. side

R. 16 E. - S. 7 - on N. E. side

T. 2. 7 N. - S. 6 - on N. W. side - S. 1

on S. W. side - R. 15 E. - S. 12

Being fully satisfied with the  
work on this Contract, I shall  
continue the inspection no further.

Sept 7<sup>th</sup> 1891



Forgoing is the true and correct field notes of the work I have inspected amounting to (58) fifty eight miles of line actually retraced, extending from one end of the field of contract to the other; and I am pleased to say, courses and distances are found practically correct; mounds and pits were evidently made in conformity with the Manual; and all work, executed in good faith with the Government, and done in good workman like manner. All of which is most respectfully submitted.

Very respectfully,  
Yours most obedient  
D. P. Chilson  
U. S. Deputy Surveyor

Final Oaths for Surveys.

52

LIST OF NAMES.

BOOK 1744

A List of the Names of Individuals employed by  
J. D. Hillman U. S. Deputy Surveyor to  
assist in running, measuring and marking the lines and  
corners described in the foregoing Field Notes of the survey of  
~~the~~ examining and inspecting  
the survey work of Deputy  
Surveyor John O. Smith un-  
der his Contract No 16 - dated  
Nov, 1<sup>st</sup> 1890

of the principal base and meridian in the Territory of Arizona,  
showing the respective capacities in which they acted.

R. T. Patterson - Flagman

J. P. Richards - Axman

Charlie Nummie

Bob Nummie } Chain  
man

Final Oaths of Assistants.

53

BOOK 1744

We hereby certify that we assisted *I. D.*

*Chillean* U. S. Deputy Surveyor, in surveying,  
inspecting the Contract work  
done by Deputy John C. Smith  
on the Maqui Indian Reservation

of the principal base and meridian in the Territory of Arizona,  
as are represented in the foregoing field notes as having been  
surveyed by him and under his direction; and that said Survey  
has been in all respects, to the best of our knowledge and belief,  
well and faithfully surveyed, and the corner monuments es-  
tablished according to the instructions furnished by the U. S.  
Surveyor-General for Arizona.

*R. G. Patterson*  
*J. Richards*  
*Charlie* <sup>his</sup> *Teamoynimo*  
*Bob* <sup>his mark</sup> *Mummie*  
*mark*

Subscribed and sworn to before me this *8<sup>th</sup>*

day of *September* 1891

*I. D. Chillean*

Notary Public.



Final Oath of U. S. Deputy Surveyor.

BOOK 1744

54

Lorenzo S. Sullivan

United States Deputy Surveyor, do solemnly swear that in  
pursuance of instructions received from Royal A

Johnson U. S. Surveyor General for Ari-  
zona bearing date of the 18<sup>th</sup> day of August

1891 I have well, faithfully, and truly, in my own proper  
person and in strict conformity, with the instructions furnish-  
ed by the U. S. Surveyor General for Arizona, the surveying

manual and the laws of the United States surveyed the examined

and inspected survey work

performed by Deputy Surveyor

John C. Smith, under his Contract

No 16, dated Nov 1<sup>st</sup> 1890.

of the principal base and meridian in the Territory of Ari-  
zona, as are represented in the foregoing fields notes as having

been surveyed by me and under my direction; and I do further  
solemnly swear that all the corners of the said survey have been

established and perpetuated in strict accordance with the survey-  
ing manual, printed instructions, the special written instruc-  
tions of the U. S. Surveyor General for Arizona, and in the

5  
specific manner described in the field notes, and that the foregoing are the true field notes of such survey, and should any fraud be detected I will suffer the penalty of perjury under the provisions of an Act of Congress approved August 8, 1846.

J. D. Chilson

BOOK 1744

U. S. Deputy Surveyor.

Subscribed and sworn to before me, this 1<sup>st</sup> day of October 1891.

Wm. H. Johnson  
Notary Public.  
U. S. Surveyor General

U. S. Surveyor-General's Office,

TUCSON, A. T., Oct 2<sup>nd</sup> 1891.

The foregoing Field Notes of the Survey of  
and Report of examination  
made by L. D. Chilson  
Special Examiner

~~Gila and Salt River Meridian~~  
of the survey field-work executed by  
John C. Smith

U. S. Deputy Surveyor, under his contract dated  
November 1<sup>st</sup> 1890. (No 167)  
having been critically examined, the necessary correc-  
tions and explanations made, the said Field Notes and  
the surveys they describe are hereby approved.

*Alfred Johnson*

U. S. Surveyor-General  
for the Territory of Arizona.



BOOK 1744

BOOK 1744

P. 287, R. 15E

P. 287, R. 15E

10  
141  
164 515  
214 222 ✓  
284 227  
334 132

P. 287, R. 17E

27 26 25 30 29 28 27 26  
31 32 33 31 30 29 28  
33 34 35 36 31 32 33 34

P. 287, R. 18E

15 14 13 18 19 26 15  
25 24 22 22 23 23  
✓ 22 2 23 24 19 20 21 22  
26

P. 287, R. 19E

✓

4 41<sup>3</sup> 2 1 6 5 43 63  
40 39 38 35 37 36  
10 11 12 7 8 9

125 6 7

P. 277, R. 15E

134 918  
✓ 224 919  
26 44  
46 47 20  
35 45 36

P. 277, R. 16E

P. 277, R. 17E

P. 277, R. 18E

P. 277, R. 19E

19 20 21 22 23 24 19 20  
15 15 16 17 17 18 19 19  
25 30 29 28 27 26 25 30 29  
✓ 36 1 33 1

P. 267, R. 15E

P. 267, R. 16E

P. 267, R. 17E

P. 267, R. 18E

P. 267, R. 19E

BOOK 1744

BOOK 1744

11 26  
12 17  
24 10 19  
25 9 30  
36 4 31  
1 8 6  
12 7 7

P. 257, R. 15E

P. 257, R. 16E

P. 257, R. 17E

P. 257, R. 18E

P. 257, R. 19E

13 7 18  
24 6 14  
25 5 30  
36 4 31