

1750

BOOK 1750

1750  
**Field Notes**

OF THE SURVEY OF

*the Exterior boundaries  
of the  
Maria Santisima del Carmen  
alias  
Buena Vista.*

1750

1750

*Gold and Salt River Base and Meridian*

**ARIZONA.**

By *Geo. J. Postkrug* D. S.

Under contract dated *July 12, 1882*

Survey commenced *May 11, 1882*

Survey completed *May 8, 1882*

1750

1A

Index

BOOK 175

III

48

IV

44

V

5-8

VI

5-7

VII

5-6

VIII

55

BOOK 175

BOOK 1750

IV

46

47

V

48

49

VI

52

VII

51

VIII

52

IX

53

BOOK 1750

54

X

XI

16 Preliminary Oaths of Assistants.

BOOK 1750

We G. W. Richards  
 and Samuel N. Van Pelt  
 do solemnly swear that we will well and faithfully execute  
 the duties of Chain Carriers; that we will level the chain over  
 even and uneven ground, and plumb the tally pins, either by  
 sticking or dropping the same; that we will report the true dis-  
 tance to all notable objects, and the true length of all lines that  
 we assist in measuring, to the best of our skill and ability and  
 in accordance with instructions given us in the survey of ~~the~~  
the exterior Boundaries of  
that portion of the Maria  
Santisima del Carmen alias  
Buena Vista, Private Land Claim  
~~of the principal base and meridian~~ in the Territory of Arizona.

G. W. Richards Chainman.  
Samuel N. Van Pelt Chainman.

Subscribed and sworn before me, this 4<sup>th</sup>

day of May 1882

George J. Roskine  
 Notary Public.

M. J. Brundage 10

BOOK 1750

do solemnly swear that ~~we~~ I will well and truly perform the  
the duties of Assessor & Flagman

in the establishment of corners and other duties according to  
instructions given us, and to the best of our skill and ability,  
in the survey of ~~the~~ the Exterior Boundaries  
of that portion of the María  
Santísima del Carmen  
alias Buena Vista, private  
Land claim

~~of the principal base and meridian~~ in the Territory of Arizona.

M. J. Brundage <sup>Assessor</sup>  
& <sup>Flagman</sup>

Subscribed and sworn to before me this 4<sup>th</sup>

day of May 1882

George J. Roskruge  
Notary Public.



Unalienable Private Land Claim  
Instructions from Surveyor General  
U. S. Surveyor General's Office

BOOK 1750

Tucson Arizona Jan 31<sup>st</sup> 1882

George R. Rusk, Esq  
U. S. Deputy Surveyor  
Tucson Arizona  
Sir.

Your contract of date  
January 12<sup>th</sup> 1882 for the  
preliminary survey of the  
unconfirmed private land  
claim of "Masa Santis-  
ima del Carmen" alias  
Buena Vista was approved  
by the Commissioner on  
the 23<sup>rd</sup> January 1882—  
therefore you are hereby  
authorized and instructed  
to execute the said survey.

In the performance  
of the work under this  
Contract, you will take  
notice of and be guided

## Private Land Claim

## Instructions from Surveyor General

By the following recited  
facts and instructions, viz:

This is a grant of exactly  
four square leagues - It  
extends from the Northern  
Boundary of the Santa Bar-  
bara grant in the Mexican  
State of Sonora to the south-  
ern line of the Tumacacore  
and Las Calabasas grant  
in Arizona - Your survey  
must therefore be made in  
accordance with these  
positive conditions or  
limitations - It was  
evidently the intention  
of the original petitioner  
to procure title to a tract  
of land lying between and  
extending to the said

## "Buena Vista"

## Pirate Land Claim

## Instructions from Surveyor General

grants of "Santa Barbara"  
and "Tumacacori and  
las Calabazas" and all the  
proceedings from the petition  
to and including the grant  
by the Treasurer General  
show that the grant was  
accordingly made.

There are minor  
conditions in this grant  
to which your attention is  
invited. For it is the duty  
of our Government to give  
effect so far as it is possible  
to the objects as well as the  
conditions clearly expressed  
in the original proceedings.

The grant was sought  
and made in the  
raising, and it embraces

Private Land Claim

Instructions from Surveyor General

the Santa Cruz valley and stream of that name; therefore while the proceedings show the original lines of survey to have been run North-South-East and West. It is probable, in this as in all similar cases that these lines may or may not have been run each by on North and South and East and West Courses.

The general course of the Santa Cruz river is North and South, and as the land was denounced for stock raising, the denouncer undoubtedly desired just the land that any experienced



## Private Land Claim

## Instructions from Surveyor General

stock raiser would choose  
viz: That would embrace  
the water of the Santa Cruz  
for the greatest length in  
a northerly and southerly  
direction between the ad-  
joining grants on the north  
and south. And while  
this is true, the original mea-  
surements show but  
four corners or angles  
and therefore four side  
lines will be straight and  
parallel -

+

For your information  
and assistance in execut-  
ing this survey, I enclose  
you a copy in translation  
of the proceedings of the  
original survey as above

Private Land Claim

Extracts from Original Title Papers

in the title papers.--

"Copy"

Private Land Claim

of

Mana Santissima & Carmen alias Buena Vista

Extracts from title papers describing  
the boundaries as originally surveyed

Measurements

At the same place and on  
the said day month and year  
I the said Judge being  
at the central point nam-  
ed Las Casas Viejas de  
Buena Vista. For the purpose  
of commencing the measure-  
ments asked for - I delivered  
to the measurers a humpen

## Private Land Claim

Extracts from Original Title Papers.

cord well twisted and greased, and a vara of the usual length of four quarters - and before me and the assenting witnesses, the interested party and the other officers also being present - I ordered the measurers to measure fifty varas on said cord, attaching each end thereof to a stake of sufficient length, and setting the Compass properly adjusted, the direction was taken to the South, the interested party so directing, in which direction were measured and counted one hundred and six cords: the measurement terminating at the Bellota gorda

## Private Land Claim

## Extracts from Original Title Papers

(Large oak) thus being the point  
terified to by the witnesses  
as the boundary of the lands  
known by the name of  
"Buena Vista" where I placed  
a mound of stones to be placed  
as a sign for a monument.

And returning to the center  
the measurement was made  
towards the North, in which  
direction were measured  
and counted thirty eight  
cords. the line terminating  
on a ridge (Cuchillo) in front  
of a white creek (Arroyo Blanco)  
situated on the east of the  
neighboring Sierra and  
mine de La Plomosa. at  
the termination of the mea-  
surements of the rancho of

## Private Land Claim

Extracts from Original Title Papers

Calabazas, at which point I ordered a mound of stone to be placed as a sign for a monument.

Returning to the Centre fifty cords were measured towards the West, the line terminating on a naked ridge at the point of the Sierra del Pinito, where I ordered a mound of stone to be placed as a sign for a monument.

Returning to the Centre one hundred and six cords were measured towards the East, the measurement terminating on a high hill standing at the foot of the Sierra de la Chihuahua.

Private Land Claim

Extracts from Original Title Papers

gona which runs to the left  
of the point called San Antonio - where I ordered a  
round of stone to be placed  
as a sign or monument  
with which the measurement  
of four square  
leagues was concluded  
to the satisfaction of the  
party interested, as will  
be shown by the map  
which will be attached  
to these proceedings;  
whereupon the measurers  
and other officers engaged  
in making the same  
said that the same had  
been faithfully executed  
to the best of their ability  
and without fraud against

"Puenavista"  
Private Land Claim

## Extracts from Original Title Papers

any one - under the oath  
they had made, to all of  
which I certify, and the said  
Don Francisco Jose Tubera,  
to the end that the same  
might appear, asked,  
and I entered the same in  
the proceedings which I  
signed with the said  
Tubera and the officers  
who knew how to write,  
and the Contador (Counter)  
Don Jose Maria Sotelo sign-  
ed for those who could not  
write, at their request, toget-  
her with the assisting wit-  
nesses, to which I certify -  
Juan Coruela. Francisco Jose de Tubera  
Jose M<sup>a</sup> Sotelo

Lucian Marquez

Tomas Salamancos

X

X

X

X

"Buena Vista"  
Private Land Claim  
Extracts from Original Title Papers

At the same place and on  
the said day, month and year  
I the said Surveying Judge  
being at the suburb  
on the part of the south  
for the purpose of com-  
mencing the measurements  
for forming of the square  
in compliance with the Com-  
mission given me by the  
Senor Masor General  
of the State, Don Nicholas  
Maua Gajiola I delivered  
to the measurers a humpen  
cord well twisted and  
pressed, and a vara of  
the usual length of four  
quarters, and in my pres-  
ence and that of the as-  
sisting witnesses together



# "Buena Vista"

## Private Land Claim

### Extracts from Original Title Papers

with the entrusted party and the other officers, whereupon the measurers measured a cord of fifty varas, attaching to each end thereof a stake of sufficient length and the compass being properly adjusted the line was run towards the East in which direction were measured and counted one hundred and six cords, the line terminating at the bald ridge, situated in front of the Sierra which is found between two passes in said direction where I ordered a mound of stone to be placed as a

Private Land Claim

Extracts from Original Title Papers

again for a corner monument  
Returning to the mon-  
ument (on the South above  
referred to) the line goes run  
towards the West fifty cords,  
terminating on a ridge  
which is found "pendiente  
a un final Colorado"  
(running from a red rocky  
hill) and on the edge of  
the Cañado of the Aliso,  
where I ordered a mound  
of stones to be placed as  
a sign for a corner mon-  
ument.

From this point I went  
towards the north for the  
monument in that di-  
rection which was reached,  
thence measuring and

# "Buena Vista" Private Land Claim

Extracts from Original Title Papers

Counting towards the East  
one hundred and six cords  
to a hill or red panino -  
from which run three  
high ridges, which hill  
is situated in front of a  
high Cerro, which joins  
the Sierra de la Florida,  
at which point I ordered  
a mound of stone to be  
placed as a sign for a cor-  
ner monument.

Returning to the mon-  
ument with the cross  
the line was run towards  
the West fifty cords, the line  
terminating in a pass  
"puerto viejo" near the point  
of the hill "Carapintado"  
(painted face) situated

Private Land Claim

Extracts from Original Title Papers

in front of two Alamos  
(Cotton woods) where there  
is a "Chapadero" in the  
direction of the West,  
where I ordered a mound  
of Stone to be placed as a  
begin for a monument.

At the four corner  
monuments, I and the  
measurers, counters and  
other Officers, made obser-  
vations with much care,  
the country being very  
rough - and all were of the  
opinion, and so stated  
that the corner monu-  
ments were properly plac-  
ed and in direct lines:  
each one giving his  
opinion to the best of

## Private Land Claim

## Extracts from Original Title Papers

his judgment by a prudent calculation that there are two hundred and forty four cords in the angle on the side of the East; and on the side of the West the same number of cords was estimated the circumference being eight hundred cords. with which measurements the tract was squared, whereupon I made this entry in the proceedings which I sign with the said Carrillo; the Sergeant Citizen Manuel Duran signing for those of the Officers who could not write, together with

"Buena Vista"  
Private Land Claim

BOOK 1750

Instructions from Surveyor General

the assisting witnesses to  
which I certify

Jose Grijalva

Juan Aijo Carrillo, Jose Manuel Duran  
A A

Lorenzo Cortello - Jose M<sup>a</sup> Sotelo

" " " "

---

In this case as in that  
of the "Los Nogales" de Elias  
you may have to disregard  
to some extent the distances  
given in the original survey  
inasmuch as your survey  
must be made to embrace  
a tract with these fund-  
amental conditions: viz:  
1. It must embrace the

## Private Land Claim

## Instructions from Surveyor General

proper proportion of each -  
by four square leagues as  
indicated in these instructions,

2- It must embrace the  
"abandoned" place called  
"Mañá Santísima del Car-  
men" alias "Buena Vista"  
if this place be in Arizona

x 3- It should as a condition  
subordinate to the preceding  
two, embrace land adapted  
to stock raising.

To properly make this  
Survey, you will be obliged  
to find the northern line  
of the Santa Barbara  
grant in Sonora and  
if possible make your  
starting point of meas-  
urement thence to the

## Private Land Claim

## Instructions from Surveyor General

north boundary at the point named in the original title papers, and from said point run a line north-  
only to the southern line of the mission lands of Tumacacori and Los Calabazas. This line need not be marked and that portion in Sonora should not be.

The only object of this line is to enable you to so establish the easterly and westerly side lines as to include the proper proportion of the four square leagues north of the international boundary in your survey



"Buena Vista"

Private Land Claim

Instructions from Surveyor General

which is the quantity recommended for confirmation.

The North line of your survey will be common at least to some extent to the South line of Tumacacori and Los Galabayas - as established by John L. Harris Deputy Surveyor in March 1880. A tracing and copy of the notes of said line are here - with handed you -

---

Private Land Claim

Extracts from field notes of the South boundary of Calabazas.

Private Land claim

Chains  
808.75

x x x  
To a point which establish as the S.E. corner of the Estancia - Set a post 4 ft long, 4 ins sqd in mound of stones and marked T.C.P.L.C.E.S.E.



From the S.E. cor of the Estancia, Run at right angles S 43° W

var 13° 40' E

as per Burt's Solar Compass

- 168.94 Run into Santa Cruz valley on N.W + S.E
- 171.05 Santa Cruz river 40 fms wide flows N.W.
- 175.22 Main road bears N.W + S.E
- 175.44 Leave valley, run up a high hill
- 197.44 Top of hill and intersect a

## Pirate Land Claim

Extracts from Field Notes. South Boundary of Calabasas

Chains large and very old mound of stones shown one as the S. limit of the claim in the Santa Cruz valley.

There is no mistaking this as an old mound and it is clearly distinguishable from the numerous devisaderos frequently met with on hills.

I set here a post temporarily.

x x x x

506.00 To a point where I establish the S.W. cor of the Estancia. Set a post 4 ft long 4 in sq in mound of stones and marked T.C. P.L.C. E.S.W

## Private Land Claim

Extracts from Field Notes, South Boundary of Calabasas

- Chains From the S.W. corner of the Estancia. Run at right angles  $N 43^{\circ} E$   
 or  $13^{\circ} 39' E$   
 as per Burt's Solar Compass
- 12.39 Enter Potrero valley by N.W.
- 18.39 Potrero road bears N.W.
- 19.39 To an old mound of stones which I believe to be an original mound on the claim and designed to mark the S. limit of the claim in the Potrero valley - I set here a post 4 ft long 4 ins sq in mound of earth alongside the old mound and marked T.C.P.L.C.A.E

Believing that I have now joined the claim on the original mound marking

25  
BOOK 1750

"Buena Vista"

Private Land Claim

Extracts from Field Notes, South Boundary of Calabazas

Chain its southern limit in the Santa Cruz and Potrero valleys. I make the necessary calculations and from the post last established at the old mound in the Potrero I run S.  $86^{\circ} 07' E$

Var.  $13^{\circ} 39' E$

- 0.25 Potrero creek crosses N. 25 lks wide  
40.00 Leave valley run on rolling hills  
390.21 My flag is just to S. of the old mound on the hill on N. border of the Santa Cruz valley. But the chain is 110 lks short. This has been lost on the broken and difficult ground between the Potrero and Santa Cruz. So I close on the mound and set a post 4 ft long, 4 ins sq<sup>d</sup>

Pirate Land Claim

tracts of Field Notes. South Boundary of Calabases

in mound of stones and  
marked T. C. P. L. C. E. A -  
from which.

The cor to Tps 23 and 24  
S. Rqs 14 & 15 E - Gila and  
Salt River Meridian, Ariz-  
ona brs N 27° 16' W. 92.16 chs  
distant -

The house at Yerba Buena  
Ranch brs N 37° 22' W. 106.14  
chains -

True and correct extracts  
from the original field  
notes -

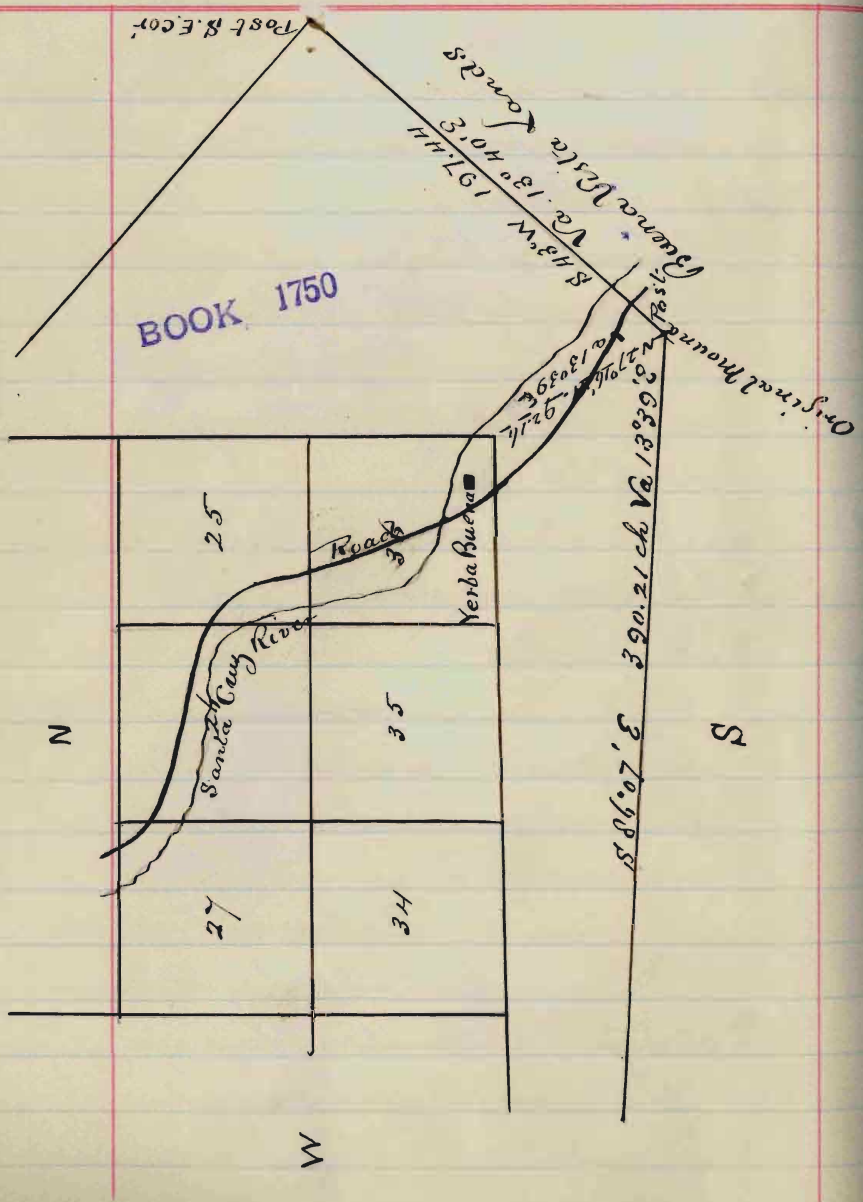
John Masson  
U.S. Sur General

U.S. Sur General's Office  
January 19. 1882

27

Buenavista

# Private Land Claim Sketch showing South Bound- ary of the Calabatas Private Land Claim



## Private Land Claim

## Instructions from Surveyor General

The south line will be run and marked exactly upon the U. S. Boundary between Arizona and Sonora, where it crosses this grant from East to West, and I understand said Boundary is easily found at that point.

In establishing the east and west side lines you will be governed as to their proportionate distance from the Central Point or line named in the original title papers. By the distances ~~stated~~ stated in said papers and these show about two thirds of the land to lie East of the Central North and South line



## Private Land Claim

Instructions from Surveyor General

referred to in said original papers.

Your attention is called to the rules for surveying private land claims upon pages 111, 112, and 113 of the instructions to Surveyors General of date May 3, 1881, and in all particulars not inconsistent with the foregoing instructions you will strictly comply therewith in the execution of the survey hereby authorized - To strictly comply with all requirements in said rules (25 in number) would in every survey in Arizona work a manifest injury to the public

Buenavista  
Private Land Claim

BOOK 1750

Instructions from Surveyor General

interests by including tracts of land much larger than were originally patented for, and sold and granted by the Mexican authorities and in some cases, several times the quantity so sold and granted.

The framers of these rules were evidently not informed as to the conditions upon which grants of land were sought and made in what is now Arizona, by Spain and Mexico - else they would not have ignored the question of quantity which was and is a controlling condition in nearly

Private Land Claim  
Instructions from Surveyor General

every one both great and  
Small.

You will be very  
Careful to note all evi-  
dences of mines and  
minerals along your  
lines and on that portion  
of this grant lying in the  
Territory of Arizona,  
and make special men-  
tion of the same in the  
general description ap-  
pended to your notes  
of Survey. With refer-  
ence to any interference  
that may be offered you  
while necessarily in Sonora  
in execution of this Survey  
by the people or authorities  
of Mexico - I call your

Private Land Claim

Instructions from Surveyor General

attention to my suggestions  
in point contained in your  
instructions of date March  
25, 1881 in case of the  
"Los Nogales de Elias" Survey.

Duplicate of your con-  
tract and necessary blanks  
field books, etc are here-  
with handed to you

Very Respectfully  
John Watson  
W. C. Surveyor General

Traverse line run from the North Center Monument of the Santa Barbara Rancho

in Sonora, Mexico, to a monument marking the South boundary of the Tumacacori and Las Calabasas, Pinalé Land Claim, in Arizona, U.S.

In accordance with instructions dated Jan 31<sup>st</sup> 1882.

I proceeded to the monument marking the North Center of the Santa Barbara Rancho in Sonora, Mexico, which is stated in the original title papers to be at the "Ballota Gordó" (large oak). I find the monument of stones which was pointed out to me by Chato Martinez, a Mexican living on the Belina Vista Rancho, and who informed me that for a period of

## Notes of Traverse Line

30 years he had known it to be the monument marking the North Center of the Santa Barbara and the South Center of the Buena Vista Ranches.

The oak was burnt down some time ago, but the roots can be easily found by digging -

Being now satisfied as to my starting point. I run a traverse line down the Santa Cruz Valley to the monument marking the South boundary of the Tumacacori and San Calabazas Pujate Land Claim. as follows

Var  $12^{\circ}33'$  as per observation on Polaris -

N  $22^{\circ}$  W 25.15 chains. thence

## Notes of Traverse Line

N  $22\frac{1}{2}^{\circ}$  W 95. chs thence River 6<sup>th</sup> left  
 N  $37^{\circ}$  W 10.90 " "  
 N  $48\frac{1}{2}^{\circ}$  W 50. "  
 N  $46\frac{1}{4}^{\circ}$  W 12.17 chs Santa Cruz River 5 chs left.  
 " 28.43 " Rancho House 2 chs left  
 " 19.00 " Santa Cruz River 10 chs left  
 " 119.60 " to a point, thence  
 N  $44^{\circ}$  W. 48 " cross Santa Cruz River  
 50 lks wide flows N.W. thence 54.70 chs  
 to a point, thence N  $29^{\circ}$  W. 54 chs;  
 from this point the ruins of the old  
 Buena Vista Rancho house bears  
 West 15 chs distant. thence  
 N  $43^{\circ}$  W. 40 chs, thence N  $16^{\circ}$  W.  
 50 chains. Santa Cruz River  
 30 links wide flows N.W. thence  
 55 chains. Chatto Martiny house  
 bears East 2 chains distant.  
 thence N  $16^{\circ}$  W. 87 chs to the  
 United States Boundary Monu-

## Notes of Traverse Line

ment between the United States and Mexico. Said monument being on the west side and near the main road leading from Santa Cruz to Tucson. thence  $N 2\frac{1}{2}^{\circ} W$  11.5 chains. Santa Cruz River flows N.N.E. 30 links or 159 chains to post marking the South Boundary of the unconfined Pubate Land claim of Tumacacori and Las Calabasas, as established by U.S. Deputy Surveyor John L. Harris in March 1880. Said post being firmly fixed in a monument of stones, and marked T.C.P.L.C. A.E. and is built on a high ridge sloping East towards the Santa Cruz River, from which it is distant about  $\frac{1}{4}$  of a mile.



## Explanations

I now make the necessary calculations and find that I am 542.41 Chains North, and 321.63 " West of the monument marking the South Center of the Buena Vista Rancho in Sonora, this makes the course and distance between the 2 monuments to be  $N 30^{\circ}40' W$  630.60 Chains.

I come to the conclusion to run the North and South lines due East and West, for the reason that at this point marking the South East Corner of the Estancia of Temacacori and Las Calabatas while one line runs  $N 86^{\circ}07' W$  the other runs  $N 48^{\circ} E$ , and as the original title papers

## Explanations

Call for East and West Courses that to follow them in this Case would be the better plan and also for the following reasons. Although I take the monument marking the South line of the Tubniacacori and Las Calabasas Private Land Claim, as surveyed by John L. Harris, U. S. Dip. Surv. in March 1850. to be, at this point, the correct one, it answering the description in the original title papers of the Buena Vista Private Land Claim, as the line (meaning the centre line running North) "terminating on a ridge" I am by no means satisfied that the mon-

## Explanations

ument adopted by him as the original one marking the South boundary of the Tumacacori and Las Calabasas Private Land Claim in the Potrero Valley, is correct.

For the following reasons. That in the original title papers of the survey of the Estancia of Tumacacori and Las Calabasas made in 1807. (a copy of which I now have before me) there is no mention made of any monument being placed in the Potrero Valley itself, although one is said to have been placed "on the slope of the highest hill seen from the Potrero", also the following extract from the original title

## Explanations

papers of the Nogales de Elias  
Private Land Claim (preliminary  
survey of which was made by  
myself in April 1881.

Referring to the monument  
marking the North Center of this  
claim, the papers go on to say.

"Terminating on the same  
"highway in a shoal where  
" a glen runs out. It is a  
" wide glen which comes  
" out of the Pajarita Mount.  
"ains where a land mark  
" was ordered to be placed  
" leaving that of Calabases  
" about 1000 paces further  
" up on a high hill situated  
" in advance of said glen."

Having now found the course and

## Explanations

distance from the South to the North boundary monuments and taking the North and South boundaries to run East and West. I find that to include an area embracing 4 square leagues of land for 1736,108 acres the North and South lines must be 630.60 chains and the East and West lines 320 chains and that the portion lying in the Territory of Arizona will contain 5060,16 acres with the North and South lines each 184 chains and the East and West lines, each 320 chains, and as the grant lies  $\frac{2}{3}^{\text{d}}$  on the East and  $\frac{1}{3}^{\text{d}}$  on the West of the central line I run the preliminary lines in accordance thereto.

BOOK 1750  
44

Field Notes of Preliminary Survey of  
María Santísima del Carmen alias Buenavista  
Private Land Claim, in Pima Co. Arizona

Chains I now commence at the post  
established by John L. Harris  
in March 1880. and marked  
T.C.P.L.C.A.E. I now mark it  
B.V.P.L.C. Beg Cor N<sup>o</sup> 1. I may  
here state that I mark all my  
posts B.V. as it has always been  
known as the Buena Vista Rancho.

Thence

North

Var  $12^{\circ}33'E$ , as per observation  
on Polaris

- 31.00 Arroyo 30 lks wide flows North.
- 40.00 Set a mesquite post 4 feet long  
flattened 3 ins wide firmly in  
the ground, marked  $\frac{1}{2}$  and  
build around it a monument  
of stones 2 ft high. from which  
a mesquite 1 in diam bears S $40^{\circ}$ E. 53 lks  
marked B.V.P.L.C.  $\frac{1}{2}$  B.T.

Field Notes of Preliminary Survey of  
 Maria Santisima del Carmen alias Buenavista  
 Private Land Claim. Pima Co. Arizona.

Chains an oak bin diam bears  $N47\frac{1}{4}E$ . 81 lks distant  
 marked B.V.P.L.C.  $\frac{1}{2}$  B.T

44.00 Arroyo 1 chain wide flows North

74.00 Arroyo 10 lks wide " E.S.E.

80.00 Set an oak post 4 feet long flattened  
 4 in wide firmly in ground marked  
 B.V.P.L.C. N<sup>o</sup> III and build around  
 it a monument of stones 2 feet high.  
 Land rolling, grass hills. Soil  
 3<sup>rd</sup> rate - Timber, a few Oaks.  
 Thence  
 West

Var  $12^{\circ}33'E$

23.00 Ridge bears N and S.

26.67 To the N.W. corner of claim where  
 Set an oak post 4 feet long flat-  
 tened 4 ins wide firmly in the  
 ground, marked B.V.P.L.C. N<sup>o</sup> III. NW  
 and build around it a mon-  
 ument of stones. 2 feet high.

BOOK 1750 40

Field Notes of Preliminary Survey of  
Maidi Santissima del Carmen alias Buenavista  
Private Land Claim - Pima Co. Arizona.

Chain's Land rolling grass hills, soil 3<sup>rd</sup>  
rate. Timber a few Oaks  
Thence  
S 30° 40' E  
Var 12° 33' E

30.00 Ravine 30ft wide flows S.E.

40.00 Set an oak post 4 feet long  
flattened 3 in wide firmly in  
the ground marked B.V.P.L.C. 72  
and build around it a monu-  
ment of stones 2 ft high from which  
An oak 8 in diam bears N 35 1/2° W. 1.39 ch's dist  
marked B.V.P.L.C. 72 B.T.

59.00 Gulch 18ft wide flows S.E.

80.00 Set an oak post 4 feet long flat-  
tened 4 in wide, firmly in the  
ground, marked B.V.P.L.C. N° IV.  
and build around it a monu-  
ment of stones 2 ft high  
from which



Field Notes of Preliminary Survey of  
 Maria Santissima del Carmen, alias Buenavista  
 Private Land Claim, Pima Co. Arizona

Chains on Oak 8 in diam. bears  $B31^{\circ}E$  - 68 lks dist.  
 marked B.V.P.L.C. N<sup>o</sup> IV. B.T

An Oak 10 in diam. bears  $N84\frac{1}{2}^{\circ}E$ , 93 lks dist.  
 marked B.V.P.L.C. N<sup>o</sup> IV. B.T

Land rolling, grass hills, Soil 3<sup>rd</sup> rate  
 Timber. A few scattering oaks.  
 Thence

S.  $30^{\circ}40'E$

Var  $12^{\circ}33'E$

- 6.00 Gulch 50 lks wide flows East  
 26.00 Gulch 10 " " flows East  
 40.00 Set a Mesquite post 4 ft long, flat-  
 topped 3 in wide, firmly in the ground  
 marked B.V.P.L.C.  $\frac{1}{2}$  and build a-  
 round it a monument of stones  
 2 ft high - from which  
 An Oak 6 in diam. bears  $N80^{\circ}E$  1.62 ch. dist.  
 77.10 Sand Wash flows East  
 80.50 Leave Sand Wash  
 81.00 Set Willow post 4 ft long

Field Notes of Preliminary Survey of  
 Maud Santissima del Carmen, alias Puenavista  
 Private Land Claim. Pima Co. Arizona.

Chains

Flattened 4 in wide firmly  
 in the ground marked B.V.P.L.  
 C. N<sup>o</sup>. V. ~~dig~~ dug pits 24x18x12 ins  
 lengthwise on line, and raise  
 around post a mound of earth  
 2 feet high. From which  
 a Black Walnut 18 in diam bears N 48° W. 1.91 ch. dist  
marked B.V.P.L.C. N<sup>o</sup>. V.B.T.  
 Land level. Soil 1<sup>st</sup> rate, no timber

Thence

S 30° 40' E

Var 12° 33' E

2200

To the S.W. corner of claim, where  
 I set a mesquite post 4 ft long  
 squared 4 in firmly in the ground  
 marked B.V.P.L.C. N<sup>o</sup>. VI. S.W. dug  
 pits 24x18x12 ins, lengthwise on  
 line and raise around post a  
 mound of earth 2 feet high -  
 Valley - Soil 1<sup>st</sup> rate. No timber.

49  
 Field Notes of Preliminary Survey of  
 Maná Santísima del Carmen, alias Buena Vista  
 Private Land Claim, Pima Co. Arizona

Chains

Thence

East

Var  $12^{\circ}33'E$

- 11.76 Santa Cruz river, 30 links wide flows N.N.W.  
 17.76 United States Boundary Monument  
 18.10 Road, Santa Cruz to Tucson, bears  $N48^{\circ}$ .  
 31.26 Summit of hill -  
 40.00 Set Oak post 4 feet long flattened  
 4 ins wide firmly in the ground  
 marked B.V.P.L.C.  $\frac{1}{2}$ , and build  
 around it a monument of stone  
 2 feet high. From which  
 An oak 6 in diam bears  $N18\frac{1}{2}^{\circ}E$ , 10 lks dist.  
 marked B.V.P.L.C.  $\frac{1}{2}$  B.T.  
 An oak 6 in diam bears  $S31^{\circ}E$  12 lks dist  
 marked B.V.P.L.C.  $\frac{1}{2}$  B.T.  
 80.00 Set Oak post 4 feet long flattened  
 4 ins wide firmly in the ground  
 marked B.V.P.L.C. N<sup>o</sup>. VII. dug pits  
 24x18x12 in lengthwise on line

BOOK 1750  
30

Field Notes of Preliminary Survey of  
Mesa Santísima del Carmen alias Buenavista  
Private Land Claim. Pima Co. Arizona -

Chavis

and raise around post a mound  
of Earth 2 feet high.

Land rolling Soil <sup>2nd</sup> rate, not timber  
Thence  
East

Var  $12^{\circ}33' E$

40.00 Set oak post 4 feet long flat-  
tened 4 in wide firmly in the  
ground. Marked B.V.P.L.C.  $\frac{1}{2}$   
and raise around post a mound  
of Earth and stones 2 ft high -  
Pits impracticable, from which  
An oak 6 in diam bears  $N48^{\circ}W$ . 33 lks dist  
marked B.V.P.L.C.  $\frac{1}{2}$ . B.T.

An oak 6 in diam. bears  $S48^{\circ}E$ . 22 lks dist  
marked B.V.P.L.C.  $\frac{1}{2}$ . B.T.

80.00 Set oak post 4 feet long flat-  
tened 4 in wide firmly in the  
ground marked B.V.P.L.C. N. VIII.  
dug pits  $24 \times 18 \times 12$  in. lengthwise

Field Notes of Preliminary Survey of  
 Maná Santísima del Carmen alias Buenavista  
 Private Land Claim. Pima Co., Arizona.

Chains

on line and raise around  
 post a mound of earth 2 ft high  
 Land level. Soil 2<sup>nd</sup> rate, no timber  
 Thence  
 East

Var  $12^{\circ}33'E$

40.00 Set oak post 4 feet long flattened  
 4 in wide, firmly in the ground  
 marked B.V.P.L.C. 1/2. dug pits  
 24x18x12 lengthwise on line  
 and raise around post a mound  
 of earth 2 feet high -

80.00 Oak tree cut off 4 feet above ground  
 marked B.V.P.L.C. N<sup>o</sup> IX. and raise  
 around it a mound of stones,  
 2 feet high - pits impracticable from which  
 An Oak *bin diam* bears South - 30 ft dist.  
 marked B.V.P.L.C. N<sup>o</sup> IX. B.T.

An Oak *bin diam* bears  $S. 60^{\circ} W.$  27 ft dist.  
 marked B.V.P.L.C. N<sup>o</sup> IX. B.T.  
 Land rolling grass hills. soil 3<sup>rd</sup> rate, oak timber  
 scattering

Field Notes of Preliminary Survey of  
Mania Santissima del Carmen alias Buenavista  
Private Land Claim Pima Co. Arizona.

chains

Thence  
East

Var  $12^{\circ}33'E$

40.00 Set oak post 4 feet long flattened  
4 in wide  $1\frac{1}{2}$  feet in ground  
marked B.V.P.L.C.  $\frac{1}{2}$  - dug pits  
 $24 \times 18 \times 12$  in lengthwise on line  
and raise around post a mound  
of earth 2 feet high -

62.00 Arroyo 30 links wide runs N.E

80.00 To the S.E. corner of claim where I  
set an oak post 4 feet long flattened  
4 in wide, firmly in the ground  
marked B.V.P.L.C. N.X. S.E. dug pits  
 $24 \times 18 \times 12$  in lengthwise on line  
and raise around post a mound  
of stones 2 feet high - from which  
an oak 12 in diam bears  $N 66^{\circ} W$  71 links dist  
Land rolling grass hills - soil 3<sup>rd</sup> rate  
Timber scattering oaks -

Field Notes of Preliminary Survey of  
Maud Santissima del Carmen, alias Buena Vista  
Private Land Claim, Pima Co. Arizona

chains

Thence

N 30° 40' W

Var 12° 33' E.

30.00 Gulch flows West 18 lks wide

36.00 Gulch " " 24 " "

40.00 Set oak post 4 ft long flatt-  
end 4 in wide, firmly in the  
ground, marked B.V.P.L.C 1/2 and  
build around it a monument  
of stone 2 ft high - puts imprac-  
ticable.

57.00 Arroyo 25 links wide bears West-

80.00 Set oak post 4 ft long flattened  
4 in wide, firmly in <sup>the</sup> ground -  
marked B.V.P.L.C N° XI, and raise  
around it a monument of stone  
2 feet high - puts impracticable. In which  
An Oak 12 in diam bears N 82° E, 27 lks dist  
marked B.V.P.L.C N° XI - BT

An Oak 12 in diam bears S 52° W 48 lks dist  
marked B.V.P.L.C N° XI. B.T

+

Field Notes of Preliminary Survey of  
 Manua Santissima del Carmen. alias Buenavista  
 Private Land claim. Pima Co. Arizona

Chains

Land rolling grass hills, soil 3<sup>rd</sup> rate  
 Timber Scattering oak -  
 Thence  
 N 30° 40' W  
 Van 12° 33' E.

- 2 Arroyo - 25 lks wide bears West
- 6 " " 2 chains " " "
- 39 " " 20 lks " " "
- 40.00 Set oak post 4 feet long flattened  
 4 ins wide firmly in the ground  
 marked B.V.P.L.C 1/2 - and build a  
 mound of stones <sup>2 ft high</sup>  
 pits impracticable
- 75.00 Enter oak grove
- 80.00 Set mesquite post 4 feet long  
 flattened 4 in wide. firmly in  
 the ground. Marked B.V.P.L.C N<sup>o</sup>. XII.  
 dug pits 24 x 18 x 12 in lengthwise  
 on line and raise around post  
 a mound of Earth. 2 feet high -



Field Notes of Preliminary Survey of  
 Maria Santisima del Carmen. Talia's Buenavista  
 Private Land Claim. Pima Co. Arizona.

from which  
 An Oak 18 in diam bears  $N15^{\circ}E$ , 41 ch dist.  
 marked B.V.P.L.C. N<sup>o</sup>XII. B.T

An Oak 18 in diam bears  $S24^{\circ}W$  1.23 ch dist.  
 marked B.V.P.L.C. N<sup>o</sup>XII. B.T

Land level, soil 2<sup>nd</sup> rate, timber oak.

Thence

$N30^{\circ}40'W$

$Var 12^{\circ}33'E$ .

- 11.00 Arroyo 1 ch wide flows West  
 24.00 To N.E corner of claim where I  
 set an oak post 4 feet long  
 flattened 4 in wide, firmly in  
 the ground, marked B.V.P.L.C. N<sup>o</sup>XIII.  
 N.E. dug pits  $24 \times 18 \times 12$  in length -  
 wise on line, and raise around  
 post a mound of earth 2 ft high  
 from which  
 An Oak 18 in diam bears  $S59^{\circ}W$  1.20 ch dist.  
 marked B.V.P.L.C. N<sup>o</sup>XIII. E.C. B.T.

Field Notes of Preliminary Survey of  
Ranch Sautisemia del Carmen alias Buenavista  
Private Land Claim. Pinal Co., Arizona.

An oak 10 in diam bears N19°E. 73 links dist  
marked B.V.P.L.C. N° XIII. E.C. B.T.

Land Level, Soil 2<sup>nd</sup> rate. Timb oak grove  
Thence  
West

Var 12°33'E

40.00 Set oak post 4 feet long, flattened  
4 in wide, firmly in the ground  
marked B.V.P.L.C 1/2 - dug pits 24x  
18x12 ins lengthwise on line and  
raise around post a mound  
of Earth 2 feet high. from which  
An oak 20 in diam bears S68°W 79 links dist.  
marked B.V.P.L.C 1/2 B.T

An oak 30 in diam bears S17°E 28 links dist.  
marked B.V.P.L.C 1/2 B.T

80.00 Set mesquite post 4 feet long  
flattened 4 in wide, firmly in  
the ground 1 1/2 feet, marked  
B.V.P.L.C N° XIV. dug pits 24x18x12 ins

Field Notes of Preliminary Survey of  
 Maui Santissima del Carmen alias Buenavista  
 Private Land to laeri Pinalco Arizona

and raise around post a mound  
 of Earth 2 feet high - from which.  
 A Mesquite 8 in diam bears  $S 85^{\circ} E$  57 lks dist.

marked B.V.P.L.C N<sup>o</sup> XIV B.T.

A Mesquite 10 in diam bears  $S 20^{\circ} W$  1.34 ch dist.

marked B.V.P.L.C N<sup>o</sup> XIV B.T.

Land level - grass - soil 2<sup>nd</sup> rate. Oak timber.

Thence

West

Var  $12^{\circ} 33' E$ .

40.00 Set misquite post 4 ft long  
 flattened 4 in wide, firmly in  
 the ground. Marked B.V.P.L.C  
 $\frac{1}{2}$  - dug pits  $24 \times 18 \times 12$  in.  
 lengthwise on line - and  
 raise around post a mound  
 of Earth and Stone 2 feet high -  
 from which  
 An oak 18 in diam bears  $S 40^{\circ} E$  44 lks dist.  
 marked B.V.P.L.C  $\frac{1}{2}$  B.T

Field Notes of Preliminary Survey of  
Maná Santísima del Carmen alias Buenavista  
Private Land Claim. Pima Co. Arizona.

60.00 Leave timber

70.00 Gulch. 50 ft wide, flows N.W.

80.00 Set mesquite post 4 feet long  
flattened 4 in wide, firmly in  
the ground, marked B.V.P.L.C. N<sup>o</sup>. XV.  
dig pits 24 x 18 x 12 in lengthwise  
on line and raise around post  
a mound of Earth and Stone 2 ft high  
Land rolling grass hill. No timber -  
Thence

West

Var 12° 33' E.

28.00 Santa Cruz river 1 ch wide flows N.N.W.

32.50 Road from Santa Cruz to Tucson bears N.N.W. & S.S.E. and  
comprehends aspect of ridge running up to the Internet

40.00 Set Mesquite post 4 feet long, flattened  
4 ins wide, firmly in the ground  
marked B.V.P.L.C. 1/2, and build  
around it a mound of Stones 2 ft high  
pits impracticable.

5428 Close Calinks south of the post

Field Notes of Preliminary Survey of  
 Maria Santisima del Carmen alias Buenavista  
 Private Land Claim. Pima Co. Arizona.

marking the initial point of  
 Survey

Land rolling grass hills. Soil  
 1<sup>st</sup> and 3<sup>rd</sup> rate - Timber, a few  
 Cottonwoods in River bottom  
 which is very narrow -

From the Initial monument  
 the corner to T<sup>p</sup>'s 23 and 24 - S -

Range 14 " 15 - E -

which is a post in monument  
 of stones. with three bearing  
 trees still standing - bears.  
 N 27° 16' W. 92.56 chains distant

Containing 5060.16 Acres

---

George J. Roskrug

8 May 1882. U.S. Dep. Sec.

## General Description

About  $\frac{1}{3}$  of the Maria Santisima del Carmen, alias Buenavista private Land claim lies in the Territory of Arizona the other  $\frac{2}{3}$ <sup>ds</sup> being in the adjoining State of Sonora Mexico.

The portion surveyed embraces some fine agricultural and grazing lands. The Santa Cruz River flows with a northerly course, through the western portion of the claim. There are 2 or 3 small ranchos in the valley portion occupied by Mexicans. Along the banks of the river there are some few cottonwood trees. The character of the land outside of the valley is rolling grass hills covered with scattering oaks, except in the N.E. portion where the

61  
General Description.

land is level and there is considerable Oak timber.

I found no traces of mineral on the claim.

George J. Roskrug  
U. S. Dep. Surveyor

May 30<sup>th</sup> - 1882

Final Oaths for Surveys.

62

LIST OF NAMES. BOOK 1750

A List of the Names of Individuals employed by  
 Geo. J. Roskrige U. S. Deputy Surveyor to  
 assist in running, measuring and marking the lines and  
 corners described in the foregoing Field Notes of the survey of  
 the Exterior Boundaries of that  
 portion of the Maria Santisima  
 del Carmen alias Buena  
 Vista, private Land claim  
 of the principal base and meridian in the Territory of Arizona,  
 showing the respective capacities in which they acted.

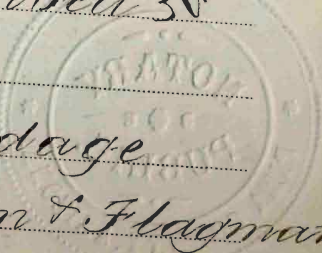
G. H. Richards

Sam<sup>l</sup> W. Van Pelt

Chamman

W. J. Brundage

Deemarr & Flagman





Final Oaths of Assistants.

63

BOOK 1750

We hereby certify that we assisted George  
J. Roskrige U. S. Deputy Surveyor, in surveying  
the exterior boundaries of  
that portion of the maria  
Santisima del Carmen  
alias Buena Vista - Private  
Land Claim

of the principal base and meridian in the Territory of Arizona,  
as are represented in the foregoing field notes as having been  
surveyed by him and under his direction; and that said Survey  
has been in all respects, to the best of our knowledge and belief,  
well and faithfully surveyed, and the corner monuments es-  
tablished according to the instructions furnished by the U. S.  
Surveyor-General for Arizona.

George J. Roskrige

Wm J. Brundage

James H. Hanks

Subscribed and sworn to before me this

8<sup>th</sup>

day of

May

1882

George J. Roskrige  
Notary Public.

I George J. Roskrige

United States Deputy Surveyor, do solemnly swear that in  
pursuance of instructions received from John

Wasson U. S. Surveyor General for Ari-  
zona bearing date of the 12<sup>th</sup> day of January

1882 I have well, faithfully, and truly, in my own proper  
person and in strict conformity, with the instructions furnish-  
ed by the U. S. Surveyor General for Arizona, the surveying  
manual and the laws of the United States surveyed the

Exterior boundaries of that  
portion of the Marid Santissima  
del Carmen alias Buena  
Vista Private Land Claim.

~~of the principal base and meridian~~ in the Territory of Ari-  
zona, as are represented in the foregoing fields notes as having  
been surveyed by me and under my direction; and I do further  
solemnly swear that all the corners of the said survey have been  
established and perpetuated in strict accordance with the survey-  
ing manual, printed instructions, the special written instruc-  
tions of the U. S. Surveyor General for Arizona, and in the

65

specific manner described in the field notes, and that the foregoing are the true field notes of such survey, and should any fraud be detected I will suffer the penalty of perjury under the provisions of an Act of Congress approved August 8, 1846.

George J. Roskrige  
U. S. Deputy Surveyor



Subscribed and sworn to before me, this 30th  
day of May 1882

Paul Rice Ros  
Notary Public.

BOOK 1750

U. S. Surveyor General's Office,  
Tucson, Arizona, July 15., 1882

The foregoing Field Notes of the survey of the  
Exterior boundaries of that portion of the Maria  
Santissima del Carmen alias Puenavista  
private land claim

in the Territory of  
of the Gila and Salt River Basins and Meridian, Arizona,  
executed by George J. Roskrug  
D. S., under his contract of the 12<sup>th</sup> day of  
January, 1882, having been critically ex-  
amined and the necessary corrections and explanations  
made, the said Field Notes and the surveys they de-  
scribe, are hereby approved.

John Masson

Surveyor General.