

S. I. de la C. Book 1.

1753

BOOK 1753

*Exterior Boundary*

*San Ignacio de la Cerrada*

1753

BOOK 1753

4-671

1753

1753

FIELD NOTES

GENERAL LAND OFFICE.

1753

Preliminary Oaths of Assistants.

We, *J. Wheatley* .....

and *Martin Ramsey* .....  
do solemnly swear that we will well and faithfully  
execute the duties of Chain Carriers; that we will  
level the chain upon even and uneven ground, and  
plumb the tally pins, either by sticking or dropping  
the same; that we will report the true distance to  
all notable objects, and the true lengths of all lines  
that we assist in measuring, to the best of our skill  
and ability, and in accordance with instructions  
given us, in the survey of the .....

*Exterior boundaries*  
*of the San Ignacio*  
*de la Canoas Private*  
*Land Grant* .....

of the Gila and Salt River Base and Meridian in  
the Territory of Arizona.

*J. Wheatley* ..... Chainman.

*Martin Ramsey* ..... Chainman.

..... Chainman.

..... Chainman.

Subscribed and sworn before me, this *18<sup>th</sup>* .....

day of *June* ..... *1890*

*Att. Purcell*  
*My Com 2/3/7/1901* Notary Public.

[SEAL.]

We, Aurelio Villa

and Charles Pogue

do solemnly swear that we will well and truly per-

form the duties of axeman and

flagman

in the establishment of corners and other duties,

according to instructions given us, and to the best

of our skill and ability, in the survey of the

Exterior boundaries

of the San Ignacio  
de la Canoa Private  
Land Grant

of the Gila and Salt River Base and Meridian, in

the Territory of Arizona.

Charles M. Pogue, flagman  
Aurelio Villa, axeman

Subscribed and sworn to before me this 18<sup>th</sup>

day of June 1888

St. D. Purcell  
Notary Public.  
my com 3/2/77/1901

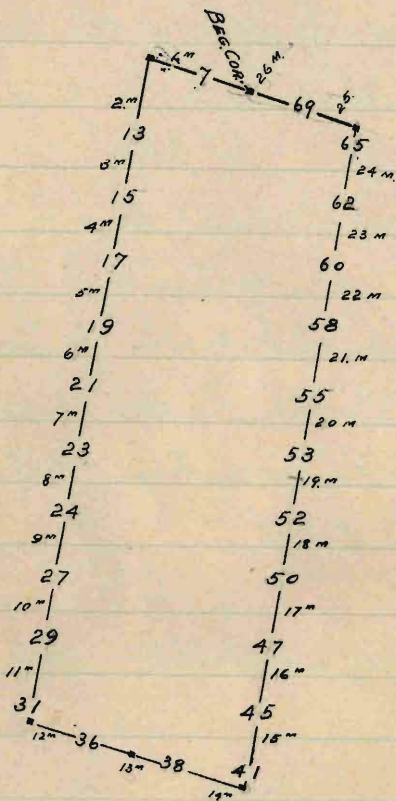
Field Notes  
of the survey of the  
Exterior Boundary Lines  
of the  
Don Ignacio de la Canoa  
Private Land Claim,  
Situating partly in Township  
18 South, Ranges 13 and 14 East,  
and Township 19 South, Range  
13, East.

of the  
Gila and Salt River Base & Meridian  
in the  
Territory of Arizona,  
as surveyed by  
Philip Coutzen  
U. S. Deputy Surveyor  
under his Contract No 59, Dated Oct. ~~22~~<sup>21</sup>, 1899.  
Survey commenced June 18, 1900.  
Survey completed June 30, 1900.

Index for

BOOK 1753  
BOOK 1754

INDEX  
SAN IGNACIO DE LA CANOA



# Exteriors of the San Ignacio de la

Survey commenced June 18, 1900, and executed with a Young & Sons Transit No 5609 with solar attachment,

The instrument was examined, tested on the true meridian at Tucson, A. T. found correct and was approved by the Surveyor General for Arizona.

I begin at the North End Center monument established by U. S. Deputy Surveyor J. L. Harris which is a mesquite post 4x4 ins. 4 ft. long, set in the ground as described by the Surveyor General. I destroy said post and set a granite stone 25x10x8 ins. 18 ins. in the ground

## Canon Private Land Grant

for the beginning corner  
monument, marked BEG. COR.  
S.I.D.L.C. on S face, from which  
a mesquite 6 ins. diam. bears  
N4°E. 116 lks. dist. marked  
BEG. COR. S.I.D.L.C., B.T.

a mesquite 8 ins. diam. bears  
S 8½°W. 329 lks. dist. marked  
BEG. COR. S.I.D.L.C., B.T.

a mesquite 7 ins. diam. bears  
S 74°W. 184 lks. dist. marked  
BEG. COR. S.I.D.L.C., B.T.

Helmet Peak bears N 49¾°W.  
SW. Cor. of adobe House bears S 89°E.  
¼ Sec. cor. of secs. 1 and 12, T. 18 S.

R. 13 E. Bears S 37¾°W. 4.73 chs.

The Cor. to Tps. 17 and 18 S. R. S.

13 and 14 E. bears N 26°10'E

83.62 chs. and raised a

3  
 Exteriors of the San Ignacio de la

mound of stone  $3\frac{1}{2}$  ft. base  
 $1\frac{1}{2}$  ft. high. S. of cor.

Preliminary to making  
 the official survey of the  
 San Ignacio de la Canea  
 Private Land claim  
 I tested bearings and  
 measurements of the North  
 South and East boundaries  
 of said grant and I  
 found that the survey  
 marked on the ground  
 corresponds practically to  
 the survey returned by  
 U. S. Deputy surveyor J. L.  
 Harris

In order to test the solar  
 apparatus by comparing  
 the results of observations



## Canoa Private Land Grant. continued

on the sun made during  
am. and p.m. hours, with a  
true meridian determined by  
observations on Polaris, I  
proceed as follows; -

at the Beginning corner on  
on North boundary as  
heretofore described.

June 18, 1900 at 2<sup>h</sup> 30<sup>m</sup> <sup>p.m.</sup> l. m. t.  
I set off 31° 53' on the Lat. arc;  
23° 24' N on the decl. arc. and  
mark the true meridian thus  
determined with the solar by  
a cross on a stone firmly set  
in the ground 5 chs. N of the  
instrument.

June 19, 1900. at 1<sup>h</sup> 37<sup>m</sup> l. m. t.  
I observe Polaris at Eastern  
elongation in accordance

Exteriors of the San Ignacio de la  
 with instructions in the  
 manual and mark the  
 line thus determined by a  
 tack driven in a wooden  
 plug set in the ground 5 chains  
 north of my station.

June 19, 1900. at 9<sup>h</sup>08<sup>m</sup> am l.m.t.  
 I set off the azimuth of Polaris  
 1°26' to the West and mark the  
 true meridian thus determined  
 by cutting a small groove in  
 the stone set yesterday on which  
 the true meridian falls, 0.2 ins.  
 West of the mark determined by  
 the solar.

at 9<sup>h</sup>15<sup>m</sup> am l.m.t. I set off 31°53'  
 on the Lat. arc; 23°26' N on the decl.  
 arc, and mark the true meridian  
 determined with the solar by a

## Canoa Private Land Claim, continued

cross on the stone already set  
5. chs. N of my station this falls  
0.3 ins. East of the true meridian  
established by the Polaris  
observation.

The solar apparatus by P.M.  
and A.M. observations defines  
positions for true meridians  
about  $0'16''$  East and  $0'11''$  West of  
the meridian established by  
the Polaris observation; therefore  
I conclude that the adjustments  
of the instrument are satisfactory.  
The magnetic bearing of the  
true meridian at  $9^h 15^m$  A.M.  
is  $12^\circ 27' W$ , the angle thus determined  
reduced by the table, page 100, gives  
the mean mag. decl.  $12^\circ 30' E$ .  
Thence I run

Exteriors of the San Ignacio de la  
chains

- N  $59^{\circ}20'W$ . on First Mile  
over level land
- 10.00 Enter dense mesquite timber  
and undergrowth
- 27.50 Wire fence bears Northwly & S wthely
- 35.00 Leave dense undergrowth
- 36.60 Deep wash 65 fks. wide, course Northwly
- 40.00  $\frac{1}{2}$  mile corner.

Set a Granite stone  $22 \times 9 \times 8$  ins  
16 ins. in in the ground for  $\frac{1}{2}$  mile  
cor. marked  $\frac{1}{2}$  S.I.D.L.C. on  
S. face, from which  
a mesquite 10 ins. diam. bears  
N  $10^{\circ}E$ . 415 fks. dist. marked  
S.I.D.L.C.  $\frac{1}{2}$  M. B.T.

A mesquite 10 ins. diam. bears  
S  $17\frac{1}{4}^{\circ}E$  372 fks. dist. marked  
S.I.D.L.C.  $\frac{1}{2}$  M. B.T.

S.E. Browns Windmill bears N  $15\frac{1}{2}^{\circ}W$

- Canoa Private Land Grant, continued
- chains
- 48.75 Brush fence bears Northerly  
and Southerly.
- 49.77 Cor. to secs. 1, 2, 35 & 36, Twp 17 and  
18 S. R. 13, E. bears N. 50.27 chs. dist.
- 57.20 Road from Nogales to Tucson  
bears N and S.; entire scattering  
mesquite & Palo Verde
- 80.00 1<sup>st</sup> Mile corner.  
Set a Granite Stone 20x12x10 ins  
15 ins. in the ground for the  
1. mile corner, marked S. I. D. L. C  
1. on S. face, from which  
a mesquite 6 ins. diam. bears  
N 49½° E. 249½ lks. dist. marked  
S. I. D. L. C. I. M. B. T.  
A mesquite 10 ins. diam. bears  
S 57½° E. 191 lks. dist. marked  
S. I. D. L. C. I. M. B. T.  
a mesquite 18 ins. diam. bears

Exteriors of the San Ignacio de la

S  $24\frac{1}{2}^{\circ}$  W, 137 lks. dist. marked

S. I. D. L. C. I. M. B. T.

a mesquite 6 ins. diam. bears

N  $47\frac{1}{2}^{\circ}$  W, 136 lks. dist. marked

S. I. D. L. C. I. M. B. T.

S. E. Brown's Windmill bears N  $73\frac{3}{4}^{\circ}$  E

Land level and gently rolling

Soil gravelly; 1<sup>st</sup> & 2<sup>nd</sup> rate

Timber mesquite and Palo Verde

Undergrowth, mesquite and

Palo Verde.

Land covered with dense undergrowth

25. chs.

N  $59^{\circ} 20'$  W. on Second Mile.

through scattering undergrowth.

24.16 $\frac{2}{3}$

To the N. W. Cor. which is a

mesquite Post 4x4 ins. 4 ft. long.

as described by the surveyor

Canon Private Land Grant, continued  
chains

General, I destroy said post  
and set a Granite Stone 26x18x12  
ins. 18 ins in the ground for the  
NW Cor. and angle monument  
marked S. I. D. L. C. NW. COR.  
and mark angle in top of stone  
on SE face  $\lambda$  from which

a mesquite 10 ins. diam. bears  
N 20 $\frac{1}{4}$ ° E. 169 lks. dist. marked  
S. I. D. L. C. NW. COR., B. T.

a Palo Verde 6 ins. diam. bears  
S 52 $\frac{1}{4}$ ° E. 75 $\frac{1}{2}$  lks. dist. marked  
S. I. D. L. C. NW. COR., B. T.

a mesquite 8 ins. diam. bears  
S 77 $\frac{3}{4}$ ° W. 222 lks. dist. marked  
S. I. D. L. C. NW. COR., B. T.

a mesquite 7 ins. diam. bears  
N 79 $\frac{1}{4}$ ° W. 168 lks. dist. marked  
S. I. D. L. C. NW. COR., B. T.

Mt. Wrightson bears N 66° 20' E.

Exteriors of the San Ignacio de la  
chains

Mt. Baldy bears  $S30^{\circ}25' E$

Thence  $S22^{\circ}56' W$ .

15.83 $\frac{1}{3}$  1 $\frac{1}{2}$  Mile Cor.

Set a Granite Stone  $24 \times 10 \times 8$  ins.  
18 ins. in the ground for the  
1 $\frac{1}{2}$  Mile Cor. marked

S. I. D. L. C. 1 $\frac{1}{2}$  on E face,  
from which

a mesquite 8 ins. diam. bears  
 $N55\frac{1}{2}^{\circ} E$ . 86 lks dist. marked

S. I. D. L. C. 1 $\frac{1}{2}$  M. B. T.

a mesquite 14 ins. diam. bears  
 $S50^{\circ} E$ . 30 lks. dist. marked

S. I. D. L. C. 1 $\frac{1}{2}$  M. B. T.

55.83 $\frac{1}{3}$  2<sup>nd</sup> Mile Cor.

Set a Granite Stone  $26 \times 8 \times 8$  ins.  
20 ins. in the ground for 2.  
mile corner, marked



## Canoa Private Land Grant. continued

S.I.D.L.C., 2. on E face  
from which

a mesquite 4 ins. diam. bears  
N 55½° E. 56½ lks. dist. marked

S.I.D.L.C., 2 M, B.T.

a mesquite 8 ins. diam. bears  
S 26½° E. 7½ lks. dist. marked

S.I.D.L.C., 2 M, B.T.

a mesquite 14 ins. diam. bears  
S 37° W. 117 lks. dist. marked

S.I.D.L.C., 2 M, B.T.

a mesquite 8 ins. diam. bears  
N 22¾° W. 147 lks. dist. marked

S.I.D.L.C., 2 M, B.T.

Land level

Soil, gravelly, 2<sup>nd</sup> rate

Timber, mesquite and Palo Verde

Undergrowth, mesquite & Palo Verde

Land covered with dense undergrowth

80. chs.

Exteriors of the Pau Ignacio de la  
chains

S  $22^{\circ}56'W$ . on Third Mile,  
over level land

40.00

$2\frac{1}{2}$  mile cor.

Set a Granite Stone  $24 \times 12 \times 5$  ins.  
18 ins. in the ground for  $2\frac{1}{2}$  mile  
corner, marked S. I. D. L. C.  $2\frac{1}{2}$

on E face, from which  
a mesquite 10 ins. diam. bears  
 $S 61\frac{1}{4}^{\circ}E$ , 248 lks. dist. marked  
S. I. D. L. C.  $2\frac{1}{2}$  M, B. T.

a mesquite 8 ins. diam. bears  
 $N 15^{\circ}W$ , 169 lks. dist. marked  
S. I. D. L. C.  $2\frac{1}{2}$  M, B. T.

80.00

$3^{\text{rd}}$  Mile Cor.

Set a Granite Stone  $24 \times 12 \times 8$  ins.  
18 ins. in the ground for 3 mile  
corner, marked S. I. D. L. C. 3. on

E face, from which  
a mesquite 8 ins. diam. bears

Canoa Privale Land Grant, continued  
chains

N  $14\frac{1}{2}^{\circ}$  E, 134 lks, dist. marked

S. I. D. L. C. 3 M, B. T.

A mesquite 4 ins. diam. bears

S  $34\frac{1}{2}^{\circ}$  E, 82 lks, dist. marked

S. I. D. L. C. 3 M, B. T.

A Palo Verde 6 ins. diam. bears

S  $40^{\circ}$  E, 4 lks, dist. marked

S. I. D. L. C. 3 M, B. T.

A mesquite 8 ins. diam. bears

N  $65\frac{1}{4}^{\circ}$  E, 250 lks, dist. marked

S. I. D. L. C. 3 M, B. T.

Land, level

Soil, gravelly, 2<sup>nd</sup> + 3<sup>rd</sup> rate.

Timber, mesquite and Palo Verde

Undergrowth, Palo Verde, mesquite

and Tesolá

Land covered with dense

undergrowth 80. chs.

Exteriors of the San Ignacio de la  
chains

- S 22° 56' W on Fourth Mile  
over level and gently rolling  
land, through dense undergrowth.
- 40.00 3½ mile cor  
Set a Quartzite stone 24x14x8 ins  
18 ins. in the ground for 3½ mile  
corner, marked, S.I.D.L.C. 3½  
on E. face, from which  
a Palo Verde 6 ins. diam. bears  
S 2¼° W, 71 lks. dist. marked  
S.I.D.L.C. 3½ M, B.T.  
a mesquite 14 ins. diam. bears  
S 53° W, 41 lks. dist. marked  
S.I.D.L.C. 3½ M, B.T.
- 40.25 Wash 40 lks. wide, course, Easterly
- 78.00 Leave dense undergrowth,
- 80.00 4<sup>th</sup> Mile cor  
Set a Granite Stone 24x15x10 ins  
18 ins. in the ground for

Dauoa Private Land Grant, continued  
chains

A mile corner, marked

S. 1. D. L. C. 4, on E face,  
from which

a Palo Verde 4 ins. diam. bears

S  $24\frac{1}{2}^{\circ}$  E. 145 lks. dist. marked

S. I. D. L. C. 4, M, B. T.

a mesquite 4 ins. diam. bears

S  $70\frac{1}{4}^{\circ}$  W. 148 lks. dist. marked

S. I. D. L. C. 4, M, B. T.

a mesquite 7 ins. diam. bears

N  $9\frac{3}{4}^{\circ}$  W. 175 lks. dist. marked

S. I. D. L. C. 4, M, B. T.

Land level

Soil, gravelly, 1<sup>st</sup> & 2<sup>nd</sup> rate

Timber, mesquite & Palo Verde,

Undergrowth, mesquite, Palo Verde  
and tesolá.

Land covered with dense  
undergrowth, 78. chs.

June 24, 1900

Exteriors of the San Ignacio de la  
chains

S  $22^{\circ}56'W$ . on Fifth Mile  
over rolling land

37.00 Wash 20 lks. wide, course, Easterly

40.00  $4\frac{1}{2}$  mile Cor

Set a Granite Stone  $22 \times 10 \times 8$  ins  
16 ins in the ground for  $4\frac{1}{2}$  mile  
corner, marked S.I.D.L.C.  $4\frac{1}{2}$

on E. face, from which  
a mesquite 7 ins. diam. bears  
S  $76\frac{1}{2}^{\circ}E$ . 79 lks. dist. marked  
S.I.D.L.C.  $4\frac{1}{2}M$ ; B.T.

A mesquite 7 ins. diam. bears  
N  $44\frac{3}{4}^{\circ}W$ . 156 lks. dist. marked  
S.I.D.L.C.  $4\frac{1}{2}M$ ; B.T.

80.00 <sup>th</sup> 5. mile Cor

Set a Granite Stone  $22 \times 15 \times 7$  ins.  
16 ins. in the ground for 5. mile  
corner, marked S.I.D.L.C. 5.  
on E. face, from which

mon Private Land Grant continued

a Palo Verde 4 ins. diam. bears  
N 75° E. 105 lks. dist. marked

S. I. D. L. C. S. M. B. T.

a Palo Verde 5 ins. diam. bears  
S 59 $\frac{1}{4}$ ° E. 105 lks. dist. marked

S. I. D. L. C. S. M. B. T.

a Palo Verde 8 ins. diam. bears  
S 22 $\frac{1}{4}$ ° E. 129 lks. dist. marked

S. I. D. L. C. S. M. B. T.

a mesquite 5 ins. diam. bears  
S. 17 $\frac{1}{2}$ ° W 70 lks. dist. marked

S. I. D. L. C. S. M. B. T.

Land, level

Soil, gravelly, 2<sup>nd</sup> rate

Timber, Palo Verde and mesquite

Undergrowth, mesquite + Palo Verde

Land covered with dense  
undergrowth 80.00 chs.

Exteriors of the San Ignacio de la  
chains

- S.  $22^{\circ}56'W$ , on Sixth mile  
over rolling land
- 30.00 Enter dense undergrowth
- 39.00 Set a Malpais stone  $20 \times 12 \times 10$  ins.  
15 ins. in the ground for  
Witness Corner to  $5\frac{1}{2}$  mile  
Corner, marked W.C. S. I. D. L. C.  $5\frac{1}{2}$   
on E face from which  
a mesquite 6 ins. diam. bears  
 $S 72^{\circ}E$ , 147 lks. dist. marked W.C.  
S. I. D. L. C.  $5\frac{1}{2}$  M. B. T.  
A mesquite 5 ins. diam. bears  
 $S 85\frac{3}{4}^{\circ}W$ , 132 lks. dist. marked W.C.  
S. I. D. L. C.  $5\frac{1}{2}$  M. B. T. and raised  
a mound of stone  $2\frac{1}{2}$  ft. base  
 $1\frac{1}{2}$  ft. high, E. of cor.
- 40.00 The point for  $5\frac{1}{2}$  mile cor falls  
in wash.
- 40.15 Wash 30 lks. wide, course Easterly



Canoa Private Land Grant, continued  
chains

79.00 Wash 30 lks. wide, course Easterly

80.00 <sup>th</sup> 6. mile cor.

Set a Malpais stone 24x14x6 ins.

18 ins. in the ground for

6. mile corner, marked

S. 1. D. L. C. 6. on E. face,

from which

a mesquite 6 ins. diam. bears

N56°E, 46 lks. dist. marked

S. 1. D. L. C. 6. M. B. T.

A mesquite 5 ins. diam. bears

N45°W, 122½ lks. dist. marked

S. 1. D. L. C. 6. M. B. T. no other

trees within limits, and raised

a mound of stone 2½ ft base

1½ ft high, E. of cor.

Land level and rolling

Soil, gravelly, 2<sup>nd</sup> & 3<sup>rd</sup> rate.

Timber, mesquite & Palo Verde

Exteriors of the San Ignacio de la  
chains

Undergrowth, mesquite and  
Paloverde,

Land covered with dense  
undergrowth, 50, chs.

S.  $22^{\circ}56'W$ . on Seventh Mile  
over rolling land

4000  $6\frac{1}{2}$  mile cor.

Set a Limestone  $20 \times 12 \times 8$  ins.  
15 ins. in the ground for

$6\frac{1}{2}$  mile corner, marked  
S. I. D. L. C.  $6\frac{1}{2}$ , on E face,  
from which

a Palo Verde 10 ins. diam. bears  
 $N 5^{\circ} E$ , 61 lks. dist. marked

S. I. D. L. C.  $6\frac{1}{2}$  M. B. T.

a Palo Verde 5 ins. diam bears  
 $S 87\frac{1}{2}^{\circ} W$ , 86 lks. dist. marked

S. I. D. L. C.  $6\frac{1}{2}$  M. B. T.

anua Private Land Grant. continued

chains

41.10

Wash 10 lks, wide, course Easterly

80.00

7<sup>th</sup> mile cor.

Set a Lime Stone  $24 \times 12 \times 8$  ins.

18 ins in the ground for

7 mile corner, marked

S. I. D. L. C. 7. on E face

from which

a mesquite 10 ins. diam bears

$N 23^\circ E$ . 41 lks. dist. marked

S. I. D. L. C. 7. M. B. T.

A Palo Verde 5 ins. diam. bears

$N 74\frac{3}{4}^\circ W$ . 44 lks. dist. marked

S. I. D. L. C. 7. M. B. T. and raised

a mound of stone 3 ft base

2 ft high E of cor.

Land rolling

Soil gravelly, 2<sup>nd</sup> & 3<sup>rd</sup> rate

Timber, mesquite & Palo Verde

Undergrowth Palo Verde & mesquite

Exteriors of the San Ignacio de la  
chains

Land covered with dense  
undergrowth. 80.00 chs.

---

S 22° 56' W on Eighth Mile

15.00 wash 20 lks. wide, course Easterly

40.00 7½ mile Cor.

Set a Lime stone 20x12x10 ins.  
15 ins. in the ground for 7½ mile  
corner, marked S. I. D. L. C. 7½ on  
E face, from which

a mesquite 6 ins. diam. bears  
N 45° E, 152 lks. dist. marked  
S. I. D. L. C. 7½ M. B. T.

a mesquite 8 ins. diam. bears  
S 73¼° W, 150 lks. dist. marked  
S. I. D. L. C. 7½ M. B. T.

40.50 Enter Valley bears Easterly

77.00 Leave Valley bears Easterly

BOOK 1753

Private Land Grant, continued

thms

8000

<sup>th</sup>  
8 mile cor.

Set a Lime stone 24x10x10 ins.

18 ins. in the ground for

8 mile corner marked

S. 1. D. L. C. 8. on E face,

and raised a mound of  
stone 3 ft. base, 2 ft. high

E of cor. Pits impracticable

Land level

Soil gravelly, 2<sup>nd</sup> rate

Timber mesquite & Palo Verde

Undergrowth mesquite

and Palo Verde

Land covered with dense

undergrowth 77. chs.

---

S. 22° 56' W. on Ninth Mile

over rolling land

## Exteriors of the San Ignacio de la C

chains

4000

8 1/2 mile Cor.

Set a Lime Stone 24 x 10 x 9 ins.  
18 ins. in the ground for

8 1/2 mile corner, marked

S. I. D. L. C. 8 1/2 on E face,  
from which

a mesquite 4 ins. diam. bears  
N 72° W. 72 els. dist. marked

S. I. D. L. C. 8 1/2 M. B. T.

a mesquite 6 ins. diam. bears  
S. 71° W. 14 1/2 els. dist. marked

S. I. D. L. C. 8 1/2 M. B. T.

1/4 Sec. Cor. bet secs. 5 and 8 T. 19, S.

R. 13 E. bears N 35 3/4° W. 3.24 els.

raised a mound of stone

2 1/2 ft. base, 1 1/2 ft. high E of

Cor.

43.50

Wash 50 els. wide, course Easterly

Private Land Grant, continued

basis

46.00

Wash 100 lks, wide, course Easterly

55.70

Wash 50 lks, wide, course Easterly

58.00

Wash 120 lks, wide, course Easterly

80.00

9<sup>th</sup> mile Cor.

Set a Limestone 24x10x9 ins,  
18 ins. in the ground for

9 mile corner, marked  
S. I. D. L. C. 9. on E face,  
from which

A mesquite 6 ins. diam bears  
N 11 $\frac{1}{4}$ ° E, 286 lks, dist, marked

S. I. D. L. C. 9. M. B. T.

A mesquite 8 ins. diam bears  
N 60 $\frac{3}{4}$ ° E, 210 lks, dist, marked

S. I. D. L. C. 9. M. B. T.

A mesquite 10 ins. diam, bears  
S. 28 $\frac{1}{2}$ ° W, 210 lks, dist, marked

S. I. D. L. C. 9. M. B. T., and raise a  
mound of stone 2 $\frac{1}{2}$  ft. base, 1 $\frac{1}{2}$  ft  
C. of cor.

Exteriors of the San Ignacio de la  
chains

Land rolling & broken  
Soil, gravelly 2<sup>nd</sup> & 3<sup>rd</sup> rate  
Timber, mesquite & Palo Verde  
Undergrowth, scattering mesquite  
and Palo Verde,

June 25, 1900

S. 22° 56' W. on Tenth mile

Over rolling land  
12.50 Enter small valley, course Eastern  
29.00 Leave small valley  
40.00 9½ mile cor.

Set a granite stone 26 x 8 x 8 ins.  
20 ins. in the ground for 9½  
mile corner, marked S.I.D.L.C.  
9½. on E face, from which  
a mesquite 7 ins. diam. bears  
N 54° E. 9 lks. dist. marked



mon Private Land Grant. continued  
chains

S. I. D. L. C.  $9\frac{1}{2}$  M. B. T.

A Palo Verde 6 ins. diam. bears  
N  $52\frac{1}{2}^{\circ}$  W, 117 lks. dist. marked

S. I. D. L. C.  $9\frac{1}{2}$  M. B. T.

42.00 Wash 10 lks wide, course Easterly

64.00 Wash 150 lks. wide, course Easterly

75.40 Wash 50 lks. wide, course Easterly;  
leave undergrowth.

80.00 10<sup>th</sup> mile cor.

Set a Malpais stone 24x14x10 ins  
18 ins. in the ground for 10 mile  
corner, marked S. I. D. L. C. 10. on  
E face, from which

a mesquite 10 ins. diam. bears  
N  $23\frac{1}{4}^{\circ}$  W, 234 lks. dist. marked

S. I. D. L. C. 10. M. B. T. no other

Trees within limits, raised  
a mound of stone 3 ft base

Exteriors of the San Ignacio de la  
chains

2 ft. high E of cor.

Land rolling

Soil, gravelly, 3<sup>rd</sup> rate

Timber, mesquite and Palo Verde

Undergrowth, mesquite and Palo Verde

Land covered with dense undergrowth

75.40 chs.

S 22° 56' W, on Eleventh mile  
over rolling land

- 1.00 Enter draw bears Easterly  
29.00 Leave draw bears Easterly  
39.50 Wash 20 lks. wide, course, Easterly  
40.00 10 $\frac{1}{2}$  mile Cor.  
Set a Malpais stone 20 x 14 x 8 ins.  
14 ins. in the ground for 10 $\frac{1}{2}$   
mile corner marked S.I.D.L.C.  
10 $\frac{1}{2}$  on E face, from which

Private Land Grant: continued

- ains
- a Palo Verde 6 ins. diam. bears  
 $N 19\frac{1}{4}^{\circ} E$ , 66 lks. dist. marked  
 S.I.D.L.C. 10 $\frac{1}{2}$  M. B.T.
- a Palo Verde 6 ins. diam. bears  
 East 103 lks. dist. marked  
 S.I.D.L.C. 10 $\frac{1}{2}$  M. B.T. and raised  
 a mound of stone 4 ft base  
 2 ft. high E of Cor.
61. 20 Wash 50 lks. wide, course Easterly.
79. 50 Set a Malpais stone 24 x 12 x 8 ins.  
 18 ins. in the ground for witness  
 Corner to 11 mile corner, marked  
 W.C. S.I.D.L.C. 11. on E face  
 from which  
 a mesquite 7 ins. diam. bears  
 $S 19\frac{1}{2}^{\circ} E$ , 153 lks. dist. marked  
 W.C. S.I.D.L.C. 11. M. B.T.  
 a mesquite 12 ins. diam. bears

Exteriors of the San Ignacio de la  
chains

S  $59\frac{1}{4}^{\circ}$  W, 180 lks. dist. marked  
W.C. S. I. D. L. C. 11. M. B. T. no other  
trees within limits, raised a  
mound of stone 3 ft. base  $2\frac{1}{2}$  ft  
high E of cor.

80.00 The point for 11.<sup>th</sup> mile corner  
comes on edge of wash.

Land rolling

Soil gravelly, 2<sup>nd</sup> & 3<sup>rd</sup> rate  
Timber, mesquite & Palo Verde,  
Undergrowth, greasewood  
mesquite & Palo Verde.

Land covered with dense  
undergrowth 80. chs.

S  $22^{\circ}56'$  W, on Twelfth mile  
over rolling land

0.20 wash 40 lks. wide, course Easterly;

anoa Private Land Grant. continued  
chains

- 9.50 Enter valley bears Easterly  
Leave valley bears Easterly
- 11.66 Old mesquite post 4x4 ins 4 ft long  
in mound of stone marked  
S.I.D.L.C.
- 36.00 Enter draw
- 38.00 Wash 40 lks. wide, course Easterly
- 40.00 1 1/2 mile cor.  
Set a Malpais stone 20x18x16 ins  
15 ins in the ground for 1 1/2  
mile corner. marked  
S.I.D.L.C. 1 1/2, on E face  
from which  
a mesquite 12 ins. diam. bears  
S 52 1/4° E. 129 lks. dist. marked  
S.I.D.L.C. 1 1/2 M. B.T.  
a mesquite 10 ins. diam. bears  
N 88 1/4° W. 160 lks. dist. marked

Exteriors of the Ran Ignacio de la  
Chains

S. I. D. L. C.  $11\frac{1}{2}$  M. B.T.

Leave draw.

57.50

The S.W. Cor.

which is a mesquite post  
4x4 ins. 4 ft long set in the  
ground as described by the  
surveyor General, & destroy  
said post and

Set a Malpais stone 26x12x8 ins.  
20 ins. in the ground for South  
West corner of grant, and  
angle monument, marked  
S. I. D. L. C. S.W. COR. on NE face  
and mark (L) angle on  
top of stone, from which  
a mesquite 6 ins. diam. bears  
 $N 57\frac{1}{2}^{\circ} E$ , 59 lks. dist. marked  
S. I. D. L. C. S.W. COR. B.T.

Cañon Private Land Grant. continued  
chains

A mesquite 12 ins. diam bears  
S  $54\frac{1}{2}^{\circ}$  E, 165 lks, dist. marked

S. I. D. L. C. SW. COR. B. T.

A mesquite 4 ins. diam, bears  
N  $7\frac{1}{4}^{\circ}$  W, 109 lks, dist. marked

S. I. D. L. C. SW. COR. B. T.

A mesquite 4 ins. diam, bears  
N  $13\frac{1}{2}^{\circ}$  W, 66 lks, dist. marked

S. I. D. L. C. SW. COR. B. T.

Mt. Baldy bears S.  $71\frac{3}{4}^{\circ}$  E

raised a mound of stone

4 ft base  $2\frac{1}{2}$  ft high NE of cor.

T. 14 S., R. 12 and 13 E.  
Cor. of secs. 19, 24, 25 & 30, bears

S  $87^{\circ}30'$  W, 19.53 chs.

Thence S  $59^{\circ}20'$  E.

22.50 12<sup>th</sup> mile cor.

Set a malpais stone  $27 \times 14 \times 10$  ins.  
20 ins. in the ground for 12 mile  
corner, marked S. I. D. L. C. 12, on

Exteriors of the Pan Ignacio de la  
chains

N. face, from which  
a mesquite 10 ins. diam. bears  
S 21 $\frac{3}{4}$ ° E, 156 lks. dist marked  
S. I. D. L. C. 12. M. B. T.

A mesquite 6 ins. diam. bears  
S 83° E, 165 lks. dist. marked  
S. I. D. L. C. 12. M. B. T.

A mesquite 6 ins. diam. bears  
N 6° W, 161 lks. dist. marked  
S. I. D. L. C. 12. M. B. T.

A mesquite 8 ins. diam. bears  
S. 89° W, 141 lks. dist. marked  
S. I. D. L. C. 12. M. B. T. and raised  
a mound of stone 2 $\frac{1}{2}$  ft base  
1 $\frac{1}{2}$  ft. high. N of cot.

Land rolling

Soil, gravelly, 3<sup>rd</sup> rate

Timber scrub mesquite and  
undergrowth.



Canon Private Land Grant continued  
chains

Land covered with dense  
undergrowth 80. chs.

S59°20'E on Thirtieth mile  
over rolling land

40.00

12½ mile cor.

Set a Malpais stone 20x12x8 ins  
15 ins. in the ground for 12½  
mile corner, marked

S.I.D.L.C. 12½ on N face, from which  
a mesquite 6 ins. diam. bears  
N77¼°E. 90 lks. dist. marked

S.I.D.L.C. 12½ M. B.T.

a mesquite 7 ins. diam. bears  
S42°E. 183 lks. dist. marked

S.I.D.L.C. 12½ M. B.T. and raised  
a mound of stone 2½ ft. base,  
1½ ft. high, N of cor.

44.20

Road from Nogales to Tucson  
bears N and S; and enter

Exteriors of the Pan Ignacio de la  
chams

44.60 Paula Cruz Valley bears Northerly  
Enter dense mesquite and  
Teovla timber and undergrowth  
bears N and S.

48.90 Closing Corner to secs. 29 and 30  
19 N. R. 13 E

48.00 old brush fence, bears N and S.

66.10 Brush fence, bears N and S

75.30 Brush fence, bears N and S

80.00 13. mile corner

Set a Lime stone  $20 \times 12 \times 12$  ins  
15 ins. in the ground for 13  
mile corner, marked S.I.D.L.C.

13. on N face, from which  
a Willow 10 ins. diam. bears  
N  $43\frac{1}{2}^{\circ}$  E, 77 lks. dist. marked

S.I.D.L.C. 13. M. B.T.

A mesquite 10 ins. diam. bears  
S  $20\frac{1}{4}^{\circ}$  W, 251 lks. dist. marked

S.I.D.L.C. 13. M. B.T.

Dauva  
chaus

Private Land Grant, continued

a Willow 8 ins. diam. bears  
S 34 $\frac{3}{4}$ ° W. 170 lks. dist. marked  
S. I. D. L. C. 13. M. B. T.

A mesquite 6 ins. diam. bears  
N 39 $\frac{1}{2}$ ° W. 100 lks. dist. marked  
S. I. D. L. C. 13. M. B. T.

Land level and rolling  
Soil, sandy & gravelly 1<sup>st</sup> & 2<sup>nd</sup> rate  
Timber, mesquite, *Tisota* and  
some willows.

Undergrowth mesquite, *Tisota*  
Land covered with dense  
undergrowth 35, 40 cho

June 26, 1900.

S. 59° 20' E on Fourteenth mile

over level land  
1.66 $\frac{2}{3}$  no signs of old center monument.  
2.80 Entit Paula Cruz River, course  
northerly

Exteriors of the San Ignacio de la  
chains

10.00 Leave Santa Cruz River, course  
northerly; and enter dense  
mesquite and Tsota timber  
and undergrowth.

39.50 Road bears N Easterly & S Westerly.

40.00  $13\frac{1}{2}$  mile cor.

Set a Quartzite stone  $20 \times 12 \times 10$  ins.  
15 ins. in the ground for  $13\frac{1}{2}$   
mile corner, marked  
S. I. D. L. C.  $13\frac{1}{2}$  on N. face  
from which

A mesquite 12 ins. diam. bears  
 $N 17\frac{1}{4}^{\circ} E$ . 111 lks. dist. marked

S. I. D. L. C.  $13\frac{1}{2}$  M. B. T.

A mesquite 16 ins. diam. bears  
 $S 61\frac{1}{2}^{\circ} W$ . 63 lks. dist. marked

S. I. D. L. C.  $13\frac{1}{2}$  M. B. T.

47.60 Brush fence bears NE & SW

54.00 Enter mesa and leave Valley

## Canoa Private Land Grant. continued.

chains

65.00 Wash 30 lks, wide, course Westerly

70.70 Wash 30 lks, wide, course Northerly

80.00 <sup>th</sup> 14 mile cor.

Set a Limestone 20x12x10 ins.  
15 ins. in the ground for  
14 mile corner. marked

S. 1. D. L. C. 14. on N. face  
from which,

a mesquite 20 ins. diam. bears  
N 32 1/2° E. 92 lks. dist. marked

S. 1. D. L. C. 14. M. B. T.

a mesquite 10 ins. diam. bears  
S. 33 3/4° E. 30 lks. dist. marked

S. 1. D. L. C. 14. M. B. T.

a mesquite 10 ins. diam. bears  
N 53 1/4° W. 75 lks. dist. marked

S. 1. D. L. C. 14. M. B. T.

a mesquite 7 ins. diam. bears  
N 79 1/2° W. 96 lks. dist. marked

# Exteriors of the San Ignacio de la Chains

S. I. D. L. C. 14 M. B. T.

Land level and rolling  
Soil, sandy and gravelly, 1  $\frac{1}{2}$  <sup>nd</sup> rate  
Timber, mesquite and Tesotā  
Undergrowth, mesquite & Tesotā  
Land covered with  
dense undergrowth 70. chs.

559° 20' E. on Fifteenth mile  
over rolling land

- 9.20 Wash 30 lks. wide, course N Easterly  
14.50 Wash 40 lks wide, course N Easterly  
22.60 Wash 30 lks wide, course N Easterly;  
leave dense timber  
25.83  $\frac{1}{3}$  S.E. Cor.

which is a mesquite post 4x4 ins.  
4 ft long set in a mound of stone  
<sup>marked and</sup>  
as described by the surveyor General.  
I destroy said post and

Canoa Private Land Grant, continued  
chains

Set a Granite stone  $30 \times 12 \times 12$  ins.  
22 ins in the ground for  
South East corner of Grant  
and angle monument, marked  
S. I. D. L. C. S. E. C. O. R. on NW face  
and mark (—) angle on top  
of stone. and raised a mound  
of stone 4 ft. base, 3 ft. high NW of  
cor. from which  
a mesquite 8 ins. diam. bears  
 $N 83 \frac{1}{4}^{\circ} E$ . 316 lks. dist. marked  
S. I. D. L. C. S. E. C. O. R. B. T.

a mesquite 8 ins. diam. bears  
 $N 51 \frac{1}{4}^{\circ} E$ . 288 ft dist. marked  
S. I. D. L. C. S. E. C. O. R. B. T.

a mesquite 8 ins. diam. bears  
 $S 64 \frac{1}{2}^{\circ} W$ . 243 lks. dist. marked  
S. I. D. L. C. S. E. C. O. R. B. T.

a mesquite 12 ins. diam. bears

Exteriors of the San Ignacio de la  
Chains

N 60° W. 287 lks. dist. marked

S. I. D. L. C. S. E. C. O. R. B. T.

Baboquivari Peak bears N 85° 45' W

Helmet Peak bears N 13° W.

Small Peak bears S. 56° E

Thence N 22° 56' E

9. 1<sup>2</sup>/<sub>3</sub> Road from Tucson to Agua Caliente  
Spring. bears E + W.

7. 16<sup>2</sup>/<sub>3</sub> Enter draw

10. 31<sup>2</sup>/<sub>3</sub> Wash 175 lks. wide, course Easterly

13. 56<sup>2</sup>/<sub>3</sub> Leave draw

14. 16<sup>2</sup>/<sub>3</sub> 14<sup>1</sup>/<sub>2</sub> mile cor.

Set a Granite stone 24 x 10 x 8 ins.  
18 ins. in the ground for 14<sup>1</sup>/<sub>2</sub> mile  
corner, marked S. I. D. L. C. 14<sup>1</sup>/<sub>2</sub>. on  
W. face, from which  
a mesquite 6 ins. diam. bears  
N 2<sup>1</sup>/<sub>2</sub>° E. 78 lks. dist. marked  
S. I. D. L. C. 14<sup>1</sup>/<sub>2</sub> M. B. T.



## Canoa chains Private Land Grant. continued

a mesquite 5 ins. diam. bears  
 $S 57^{\circ} E$ . 103 lks. dist. marked  
 S. I. D. L. C.  $14\frac{1}{2}$  M. B. T. and raised  
 a mound of stone  $2\frac{1}{2}$  ft. base  
 $1\frac{1}{2}$  ft. high. W. of cor.

45.99  $\frac{2}{3}$  old mesquite post  $4 \times 4$  ins. set in  
 mound of stone marked  
 S. I. D. L. C.

54.16  $\frac{2}{3}$  15<sup>th</sup> mile corner

Set a granite stone  $30 \times 12 \times 8$  ins.  
 22 ins. in the ground for  
 15 mile corner. marked  
 S. I. D. L. C. 15. on W. face  
 from which,

a mesquite 10 ins. diam. bears  
 $N 37\frac{1}{4}^{\circ} E$ . 197 lks. dist. marked  
 S. I. D. L. C. 15. M. B. T.

a mesquite 7 ins. diam. bears  
 $S. 7^{\circ} W$ . 82 lks. dist. marked

Exteriors of the San Ignacio de la  
chains

S. 1. D. L. C. 15. M. B. T.

a mesquite 7 ins. diam. bears  
S 68<sup>3</sup>/<sub>4</sub>° W. 127 lks. dist. marked

S. 1. D. L. C. 15. M. B. T.

a mesquite 6 ins. diam. bears  
N 41° W. 143 lks. dist. marked

S. 1. D. L. C. 15. M. B. T.

Land rolling

Soil, gravelly, 2nd rate

Timber, mesquite

Undergrowth, mesquite

Land covered with dense  
undergrowth 80. chs

N 22° 56' E. on Sixteenth mile  
over rolling land

1.25 Enter draw

26.00 Wash 30 lks. wide, course N. Westery

27.60 Wash 30 lks. wide, course N. Westery

## Canoa Private Land Grant, continued

chains

29.00

Leave draw.

40.00

15 $\frac{1}{2}$  mile cor.

Set a Granite stone 30x12x10 ins  
22 ins. in the ground for 15 $\frac{1}{2}$   
mile corner, marked, S.I.D.L.C.

15 $\frac{1}{2}$ , on W. face, from which  
a mesquite 8 ins. diam. bears  
N 5 $\frac{1}{2}$ ° E 69 lks. dist. marked

S.I.D.L.C. 15 $\frac{1}{2}$  M. B.T.

a mesquite 12 ins. diam. bears  
S 61° W. 133 lks. dist. marked

S.I.D.L.C. 15 $\frac{1}{2}$  M. B.T.

68.80

Wash 30 lks. wide, course N Westerly

80.00

16<sup>th</sup> mile cor.

Set a Granite stone 30x24x18 ins.  
22 ins. in the ground for 16 mile  
corner, marked, S.I.D.L.C. 16. on

W. face, from which,

a mesquite 10 ins. diam. bears

Exteriors of the San Ignacio de la  
chain

N  $54^{\circ} \frac{3}{4}$  E, 107 lks. dist. marked

S. I. D. L. C. 16 M. B. T.

a mesquite 10 ins. diam. bears

S.  $45^{\circ} \frac{1}{2}$  E, 66 lks. dist. marked

S. I. D. L. C. 16 M. B. T.

a mesquite 10 ins. diam. bears

S  $81^{\circ} \frac{1}{4}$  W, 51 lks. dist. marked

S. I. D. L. C. 16 M. B. T.

a mesquite 4 ins. diam. bears

N  $44^{\circ}$  W, 53 lks. dist. marked

S. I. D. L. C. 16 M. B. T.

Land rolling

Soil, gravelly, 2<sup>nd</sup> & 3<sup>rd</sup> rate

Timber, mesquite.

Land covered with dense  
undergrowth. 80.00 lks.

---

N  $22^{\circ} 56'$  E, on Seventeenth mile  
over level and rolling land

Canon Private Land Grant. continued  
chains

through dense timber

4000 16 $\frac{1}{2}$  mile cor.

Set a Granite stone 28x12x10 ins.  
20 ins. in the ground for 16 $\frac{1}{2}$  mile  
corner, marked, S. 1. D. L. C. 16 $\frac{1}{2}$  on  
W. face, from which

a mesquite 5 ins. diam. bears  
S 11 $\frac{1}{2}$ ° E. 124 lks. dist. marked  
S. 1. D. L. C. 16 $\frac{1}{2}$  M. B. T.

a mesquite 6 ins. diam. bears  
N 58 $\frac{1}{2}$ ° W. 70 lks. dist. marked  
S. 1. D. L. C. 16 $\frac{1}{2}$  M. B. T.

42.50 Wash 60 lks. wide, course N. Westerly

61.00 Enter draw bears N. Westerly

73.50 Wash 60 lks. wide, course N. Westerly

77.50 Wash 60 lks. wide, course N. Westerly

79.50 Leave draw

80.00 17<sup>th</sup> mile cor.

Set a Granite stone 28x14x10 ins.

# Exteriors of the San Ignacio de la chains

20 ins. in the ground for 17 mile corner, marked S.I.D.L.C. 17 on W face, from which

a mesquite 8 ins. diam. bears  $N 80^{\circ} E$ . 171 els. dist. marked S.I.D.L.C. 17, M. B.T.

a mesquite 10 ins. diam. bears  $S 34\frac{1}{4}^{\circ} E$ . 133 els. dist. marked S.I.D.L.C. 17, M. B.T.

a Tesolá 8 ins. diam. bears  $S 87\frac{1}{2}^{\circ} W$ . 179 els. dist. marked S.I.D.L.C. 17 M. B.T.

a mesquite 6 ins. diam. bears  $N 14\frac{1}{4}^{\circ} W$ . 95 els. dist. marked S.I.D.L.C. 17, M. B.T.

Land level and rolling

Soil, gravelly, 2<sup>nd</sup> & 3<sup>rd</sup> rate

Timber, mesquite & Tesolá

Undergrowth, mesquite and Tesolá

Sauon  
hains

Private Land Grant, continued

Land covered with  
dense undergrowth 80. chs.

N 22° 56' E. on Eighteenth mile  
over level and rolling land  
through dense mesquite undergrowth

23.20 Wash 15 fts. wide course N W. 1/4

40.00 17 1/2 mile cor.

Set a Granite stone 28 x 18 x 7 ins.  
20 ins. in the ground for 17 1/2 mile  
corner, marked, S. I. D. L. C. 17 1/2, on  
W. face, from which

a mesquite 5 ins. diam. bears  
N 34 3/4° E, 98 fts. dist. marked  
S. I. D. L. C. 17 1/2 M. B. T.

a mesquite 7 ins. diam. bears  
N 60 1/4° W, 176 fts. dist. marked  
S. I. D. L. C. 17 1/2 M. B. T.

46.50 Enter draw

Exteriors of the San Ignacio de la  
chains

59.50 Leave draw bears N Westerly  
73.75 Deep wash 20 lks. wide, course N Westerly  
79.50 Wash 50 lks. wide, course N Westerly  
80.00 18 mile cor.

Set a Granite Stone  $28 \times 16 \times 10$  ins,  
22 ins. in the ground for 18 mile  
corner, marked S. I. D. L. C. 18 M on  
W. face, from which,

a mesquite 10 ins. diam. bears  
S.  $46\frac{1}{2}^{\circ}$  E. 22 lks. dist. marked  
S. I. D. L. C. 18 M. B. T.

a mesquite 5 ins. diam. bears  
S.  $82\frac{1}{4}^{\circ}$  E. 17 lks. dist. marked  
S. I. D. L. C. 18 M. B. T.

A mesquite 12 ins. diam. bears  
S.  $48^{\circ}$  W. 92 lks. dist. marked  
S. I. D. L. C. 18 M. B. T.

a mesquite 12 ins. diam. bears  
N  $30\frac{1}{2}^{\circ}$  W. 19 lks. dist. marked



Canoa Privale Land Grant. continued  
chain

S. 1. D. L. C. 18 N. B. T.

Land level and rolling

Soil gravelly 2<sup>nd</sup> & 3<sup>rd</sup> rate

Timber, mesquite & Liveoak

Undergrowth mesquite & Liveoak

Land covered with dense  
undergrowth 80. chs.

June 27, 1900.

N 22° 56' E on Nineteenth mile  
over rolling and level land  
through dense undergrowth.

22.70 Wash 50 chs. wide, course Westerly

23.50 Wash 100 chs. wide, course Westerly

40.00 18½ mile Cor.

Set a Granite Stone 26 X 4 X 8 ins.

20 ins. in the ground for 18½ mile

Corner marked S. 1. D. L. C. 18½ on W

face, from which

Exterior of the San Ignacio de la 53  
Canoa Private Land Grant, continued  
chains

BOOK 1758

A mesquite 8 ins. diam. bears  
 $S 75 \frac{1}{2}^{\circ} E$ . 212 lks. dist. marked  
S.I.D.L.C. 18  $\frac{1}{2}$  M. B.T.

A mesquite 8 ins. diam. bears  
 $S 31 \frac{1}{4}^{\circ} W$ . 125 lks. dist. marked  
S.I.D.L.C. 18  $\frac{1}{2}$  M. B.T.

51.20 Wash 60 lks. wide course NW. and  
leave dense undergrowth.

67.40 Enter draw

70.30 Wash 100 lks. wide, course Westerly

80.00 19<sup>th</sup> mile cor.

Set a granite stone 26 x 10 x 10 ins.  
20 ins. in the ground for 19 mile  
corner, marked S.I.D.L.C. 19. on  
W. face, from which  
a mesquite 6 ins. diam. bears  
 $N 43 \frac{1}{4}^{\circ} E$ . 32 lks. dist. marked  
S.I.D.L.C. 19. M. B.T.

a mesquite 6 ins. diam. bears