

SAN IGNACIO DEL  
BABOCOMARI  
1764 PRIVATE LAND  
GRANT

~~1764~~  
CONTRACT-95

BOOK 1764

PHILIP CONTZEN  
U.S. DEP. SUR

1764

1764

2

4-671

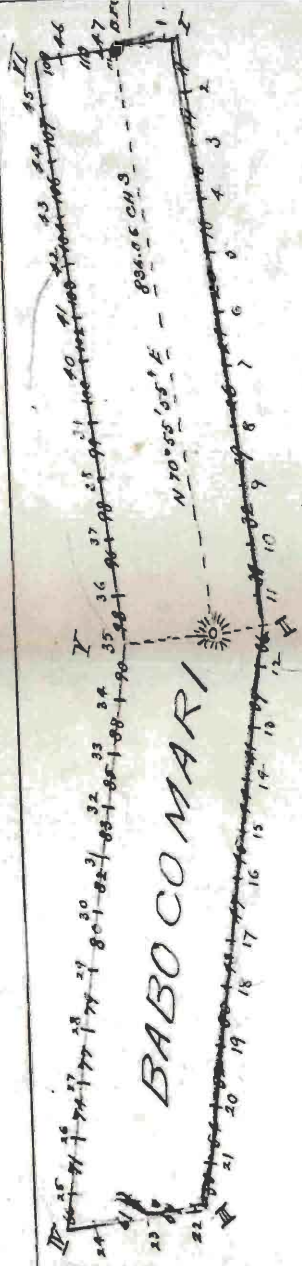
BOOK 1764

1764

FIELD NOTES  
GENERAL LAND OFFICE.

1764

Index



Book 1763  
 Book 1764

Making survey of sections on  
 timber and undergrowth.

with 5 ft  
 with each  
 with 5 ft  
 with 5 ft

Indexed, Book 1763.

(Copied)

70

BOOK 1764  
BOOK 1763

Index for  
COR

[Faint, mostly illegible text on a large sheet of paper, possibly bleed-through or a very light print.]

## Palmyra Pine Land Grant Continued

Chains

56 Chs. dist. marked S T O B, 23 7/8  
 B 7; no other tree within limit, and  
 dig pits 36x36x12 ins S 19° 4' E and  
 N 19° 4' W of stone, 4 ft. dist, and  
 raise a mound of earth 5 ft base  
 22 ft high, E of ev.

Land, mountainous

Soil, gravelly and rocky; 2nd and  
4<sup>th</sup> cuts

Timber, oak, undergrowth, oak.

Mountainous or heavy timbered  
land, 8,000 chs.N. 19° 4' 5" W. on 24<sup>th</sup> Mile.

Over mountainous land.

Ascending through scattering oak  
timber and undergrowth.19,000 Top of ridge, bears N. W. strike and  
S. Easterly, and begin descent over



Extrives of the San Ignacio del  
Chains

- rocky ground.
- 25.35 Foot, dry wash 30 lbs wide, course  
N. Easterly.
- 28.80 Same wash, 30 lbs wide, course N.  
Westerly and ascend
- 32.00 Top of ascent, trans S. W.
- 33.00 Descend along N. slope of ridge  
over limestone boulders
- 39.00 Foot, narrow above wash 30 lbs  
wide, course N. Easterly, and ascend
- 40.20 The point for the 23 $\frac{1}{2}$  mile cor-  
falls on limestone rock in place.  
6x4x2 ft above ground, on which  
cut a cross (x) at the exact cor-  
point for the 23 $\frac{1}{2}$  mile cor. marked  
S I 5 6 on E, P L on N, and 23 $\frac{1}{2}$  m. on  
N sides of cross, from which an  
oak 14 ins diam, bears N. 37 $\frac{1}{2}$ ° E 60  
lbs dist, marked S I 5 13 23 $\frac{1}{2}$  M. R.T.

## Babcock's Private Land Grant (continued)

Chronicle

An oak 24 ins diam, bears S 52° W  
108 lbs dist, marked S I D B 23 1/2 M  
B.T.

An oak 14 ins diam, bears N 85° W  
46 lbs dist, marked S I D B 23 1/2 M  
B.T.

An oak 8 ins diam, bears N 11 3/4° W  
43 lbs dist, marked S I D B 23 1/2 M  
B.T. and raise a mound of stone  
3 ft base, 3 ft high, E of cor.

40.20 Top of spur, from N. E. end descend

42.71 Foot and enter above wash, course  
N.

45.60 Cross wash, course N.E., and begin  
ascend S.E. slope of ridge

59.00 Top, bears N. E. mostly and S  
W. mostly

67.26 Intersect 4<sup>th</sup> Standard Parallel  
South at a point from which

Extrius of the San Ygnacio del  
Cotains

The standard cor of sres 31 and 32,  
P 20 S, R 17 E, as heretofore described,  
bars West, 3.69 chs dist.

Set a granite stone 18x10x10 ins, 12  
ins in the ground, for closing cor  
of parcel sres 31 and 32, marked  
S 20 S on N and S. C. C. on W faces,  
from which an oak 7 ins diam, bars  
N 46 $\frac{1}{2}$ ° W, 27 chs dist, marked P 20  
S, R 17 E, S 31 B. T., another tree within  
limit, and raise a mound of stone  
2 ft base 1 $\frac{1}{2}$  ft high N. of cor.

78.47 Intersect line bet sres 31 and 32  
P 20 S, R 17 E, at a point from which  
the standard cor of sres 31 and 32,  
as heretofore described, bars South  
10.88 chs dist.

Set a limestone 18x12x8 ins, 12 ins  
in the ground, for closing cor of

Bellevue Prairie Land Grant - continued  
Chains

Iron ore 31 and 32, marked U on  
S and S E S B on N faces, from which  
an oak 10 ins diam, bears S  $50\frac{3}{4}^{\circ}$  E,  
61 lbs dist, marked P 20 S, R 17 E,  
S 32 B 7.

An oak 6 ins diam, bears S  $19^{\circ}$  N, 90  
lbs dist, marked P 20 S, R 17 E, S  
31 B 7.

S. 210 Set a limestone 24 x 10 x 8 ins, 18 ins  
in the ground, for the 24 mile cor  
marked S T D B on E, P L on W  
and 24 M on N faces, from which  
an oak 6 ins diam, bears N  $25\frac{1}{4}^{\circ}$  E,  
214 lbs dist, marked S T D B 24  
M B 7.

An oak 16 ins diam, bears S  $71\frac{1}{4}^{\circ}$  E  
211 lbs dist, marked S T D B 24  
M B 7.

An oak 12 ins diam, bears S  $4\frac{3}{4}^{\circ}$  W



Extremities of the San Ignacio del  
chains

40 lbs dist, marked S I 5 B 2 4 M  
B. 77

An oak 10 ins diam, bears N  $57\frac{1}{2}^{\circ}$  W,  
101 lbs dist marked S I 5 B, 2 4 M  
B. 77. dig pits 36 x 36 x 12 ins S  $19^{\circ}$  W  
E. and N  $19^{\circ}$  W of stem 4 ft dist  
and raise a mound of earth 5 ft  
long,  $2\frac{1}{2}$  ft high, E of cor.

Land, mountainous

Soil, gravelly and rocky; 2nd  
and 4" rats.

Timber, oak

Mountainous land, 8000 lbs

N  $19^{\circ} 4' 5''$  W on 25<sup>th</sup> Mile.  
Or in mountainous land.

19.50 Descending

37.00 Foot, and enter draw, course  
N. W. westerly

## Palaeontological Private Land Grant (continued)

Chairs

4 v. 10

Set a limestone  $24 \times 12 \times 10$  ins, 18  
ins in the ground, for the  $24 \frac{1}{2}$  mile  
cor, marked S I D B on E, P L on W  
and  $24 \frac{1}{2}$  <sup>1 M</sup> on N fence, from which  
an oak 8 ins diam, bears N  $33 \frac{1}{2}^{\circ}$  E,  
114 lbs dist, marked S I D B  $24 \frac{1}{2}$   
W B 7'

An oak 12 ins diam, bears S  $81^{\circ}$  E,  
144 lbs dist, marked S I D B  $24 \frac{1}{2}$   
W B 7'

An oak 12 ins diam, bears S  $45 \frac{1}{2}^{\circ}$  W,  
180 lbs dist, marked S I D B  $24 \frac{1}{2}$   
W B 7'

An oak 40 ins diam bears N  $87 \frac{1}{4}^{\circ}$  W  
149 lbs dist, marked S I D B  
 $24 \frac{1}{2}$  W B 7', dig pits  $36 \times 36 \times 12$   
ins, S  $190^{\circ} 41'$  E and N  $190^{\circ} 41'$  W of  
stone, <sup>4 ft dist</sup> and raise a mound of  
earth 5 ft base, 22 ft high, E

Externis of the San Ignacio del  
Charris

of cor.

44.72 Angle cor No. 4

Set a limestone 24x14x12. ins  
18 ins in the ground, for angle  
cor No 4, marked C I R A No 4  
on top, S I D B on S E and N L  
on N W faces, from which an  
oak 14 ins diam, bears N 26 1/2° E,  
247 lbs dist, marked S I D B  
COR No 4 B. 7.

An oak 12 ins diam, bears S 67 1/2° E,  
361 lbs dist, marked S I D B  
COR No 4 B. 7.

An oak 40 ins diam, bears S 9 1/2° W,  
431 lbs dist, marked S I D B, COR  
No 4 B. 7.

An oak 12 ins diam, bears N 79 3/4° W,  
412 lbs dist, marked S I D B  
COR No 4 B. 7. and vice versa



Palcooman Private and Grant Continued

Chain

runner of stone 3 ft base, 3 ft high, S E of ev.

From this ev Babby peak, Santa Rita mountains from N 76 1/2° W.

Shump peak from N 35 1/2° W

Thamer S 88° 7' E

Ascenting

10.00 Top of ridge, runs Northwesterly and Southwesterly and descend

13.00 Foot

14.00 Down 2 chs wide, course Northwesterly

15.00 Ascent

15.05 Intersect s.e. line bet sres 31 and 32, S 20 S, R 17 E, at a point from which the ev of sres 29, 30, 31 and 32, as heretofore described runs North 26.00 chs dist.



Extracts of the San Ignacio del  
Charris

- Set a limestone 18x10x8 ins, 12 ins  
in the ground, for closing end of  
fractures 31 and 32, marked  
CC on N, STDB on S, 31 on W  
and 32 on E faces, from which  
an oak 12 ins diam, bears  $N 34\frac{1}{2}^{\circ}$   
N, 2.87 lbs dist, marked T 20 S,  
R 17 E, S 31 B. 7. dig pits 24x18x12  
ins N, 7 ft, and 30x24x12 ins  
N  $88^{\circ}$  W of stone, 3 ft dist, and  
raise a mound of earth 4 ft base,  
2 ft high, N of pt.
- 23.00 Top of ridge, bears Northwly and  
Southwly, and descend
- 34.00 Foot, and enter small valley, bears  
N. Easterly
- 35.28 Completion of 25<sup>th</sup> mile.  
Set a limestone 24x12x10 ins, 18  
ins in the ground, for the 25 mile

Babeomari Private Land Grant Continued

Chamis

ev., marked S I D B on S, PL on N  
and 25 M on E faces; dig pits  
36 x 36 x 12 ins, N 88° W and S 88° E  
of stone, 4 ft dist, and raise a  
mound of earth 5 ft base, 2 1/2 ft  
high, S of ev.

Land, mountainous

Soil, gravelly; 2nd and 3rd rate.

Timber, oak and juniper

Mountainous land, 8,000 Cha.

S 88° 1/2 E on 26<sup>th</sup> Mile.

Very mountainous land.

11.00 Cross Valley and ascend

21.60 Top of ridge, Cross Northerty and  
Southerty

32.00 Descend

40.00 Set a sandstone 24 x 16 x 6 ins, 18  
ins in the ground, for the 25 1/2

Exterior of the San Ignacio well  
Chumis

well cor, marked S.T.D.B on S, P.L on  
N and 25  $\frac{1}{2}$  on E face. dig pits  
36 x 36 x 12 ins, N 85° W and S 85° E of  
stone, <sup>4 ft to pit</sup> and raise a mound of earth  
5 ft base, 2  $\frac{1}{2}$  ft high, S of cor,  
ft of desert

41.50 Found

46.00 Top of a well, runs S E and around

50.50 Foot, and inter drain, corner Northward

59.50 Intersect ore line bet ores 32 and

33, P 208, R 17 E, at a point from  
which the cor of ores 28, 29, 32  
and 33, as here to, on described,  
beard North 28.34 E in dist.

Set a limestone 18 x 8 x 5 ins, 12 ins  
in the ground, for closing cor of  
fracl ores 32 and 33, marked  
C.C on N, S.T.D.B on S. 33 on E  
and 32 on N faces;



Babeermain Private Land Grant Continued  
 Chains

- dig pits  $24 \times 18 \times 12$  ins. N  $7^{\circ}$  E and  
 $30 \times 24 \times 12$  ins. N  $88^{\circ}$  W of stone, 3 ft  
 dist. and raise a mound of earth  
 4 ft base, 2 ft high, N of cor.
- 63.00 Trace drain and begin ascent of  
 N slope of ridge
- 76.00 Top of ridge, bears Northerly and  
 Southerly and descend
- 81.00 Set a Limestone  $24 \times 10 \times 8$  ins, 18  
 ins in the ground, for the 26 mile  
 cor, marked S I D B on S. P L on N  
 and 26 M on E face. From which  
 an oak 12 ins diam, bears S  $22\frac{1}{4}^{\circ}$  E  
 336 lbs dist, marked S I D B 26 M  
 B.T.
- An oak 14 ins diam, bears S  $38\frac{1}{4}^{\circ}$  W  
 107 lbs dist, marked S I D B 26 M  
 B.T.
- An oak 12 ins diam, bears N  $78\frac{1}{2}^{\circ}$  W



Extriors of the San Ignacio del  
Chains

203 lbs dist, marked 87013 26 m  
B.T.; dig pits 36 x 36 x 12 ins N 88° W  
and S 88° E of store, 4 ft dist and  
raise a mound of earth 5 ft base,  
2 1/2 ft high, S of cor.

Land, mountainous

Soil, generally 2nd and 3rd rate

Timber, oak.

Mountainous land, 8000 lbs

July 25, 1902.

July 26, 1902. At 7<sup>h</sup> 30<sup>m</sup> a.m. l.m.t. I  
set off, 31° 39' on the lat. arc, 19° 25' N  
on the decl arc and determine a  
true meridian with the solar at  
the 26<sup>th</sup> mile cor.

Shaner I am

S 88° 4' E on 27<sup>th</sup> Mile.

Very mountainous land

Baconian Private Land Grant - (continued)  
Chains

- Assembling
- 7.00 Foot, and enter valley, from N  
Westerly
- 21.00 From valley and enter draw, running  
Westerly
- 33.00 From draw and ascend
- 41.00 Set a limestone 24 x 10 x 8 ins, 18 ins  
in the ground for the 26 $\frac{1}{2}$  mile  
ev. marked S I S B on S, P on N  
and 26 $\frac{1}{2}$  M on E face; dig pits  
36 x 36 x 12 ins, N 88° W and S 88° E of  
stone, 4 ft dia, and raise a pyramid  
of earth 5 ft base, 2 $\frac{1}{2}$  ft high, S  
of ev.
- 56.00 Top of mesa, from Northerly and  
Southernly
- 59.10 Intersect sec line bet secs 33 and  
34 by 20 S, R 17 E at a point from  
which the ev of secs 27, 28, 33 and

Extriors of the San Francisco del  
Chamiso

34, an heart of iron described. Found  
North 30.69 chs

Set a granite stone 18x10x8 ins, 12  
ins in the ground for closing cor of  
frail ores 33 and 34, marked  
CC on N, SIOB on S, 33 on it, and  
34 on E faces; dig pits 24x18x12 ins  
N 7 ft and N 88° W of stone 3 ft  
dist, and raise a mound of earth  
4 ft base 2 ft high, N of cor

8000 Set a limestone 24x12x6 ins, 18  
ins in the ground for the 27 indiv  
cor, marked SIOB on S, PL on N  
and 27 W on E faces; dig pits  
36x36x12 ins, N 88° W and S 88° E  
of stone, 4 ft dist, and raise a  
mound of earth 5 ft base, 2½ ft  
high, S. of cor  
Land, unimproved and level



Palmer's Private Land Grant - Continued  
Chimia

Soil, gravelly; 2nd and 3rd rate  
 Timber oak

Mountainous land, 5.00 chs

$S 88^{\circ} 7' E$  on  $28^{\text{th}}$  Mile  
 Over level land

4.00 Set a limestone  $24 \times 14 \times 10$  ins, 18  
 ins in the ground, for the  $27 \frac{1}{2}$   
 mile cor, marked S E D B on S. Pl  
 on N and  $27 \frac{1}{2}$  M on E faces; dig  
 pits  $36 \times 36 \times 12$  ins,  $N. 88^{\circ} W.$  and  
 $S 88^{\circ} E$  of stone, 4 ft dist, and raise  
 a mound of earth 5 ft base  $2 \frac{1}{2}$  ft  
 high, S of cor.

58.59 Intrusret see line bet sees 34 and  
 35,  $S 20^{\circ} S, N 17^{\circ} E$ , at a point from  
 which the cor of sees 26, 27, 34 and  
 35 as heretofore described, bears  
 North 33.13 chs dist.



Extremes of the San Genacio del  
Cerritos

Set a limestone  $18 \times 10 \times 8$  ins, 12 ins  
in the ground, for closing cor of  
fracl sur 34 and 35, marked CC  
on N, S, D, B on S, 35 on E and 34  
on N faces; dig pits  $24 \times 18 \times 12$  ins  
N 7 ft and N  $88^\circ$  W of stone, 3 ft  
dist, and raise a mound of earth  
4 ft base, 2 ft high, N of cor.

8.000 Set a limestone  $24 \times 12 \times 6$  ins, 18  
ins in the ground, for the 28 mile  
cor, marked S, D, B on S, PL on N  
and 28 M on E faces; dig pits  
 $36 \times 36 \times 12$  ins N  $88^\circ$  W and S  $88^\circ$  E of  
stone, 4 ft dist, and raise a mound  
of earth 5 ft base, 2 1/2 ft high, S  
of cor.

Land level and gently rolling  
Soil, gravelly; 1 ft and 2nd rate  
No timber.

Babeconan Private Land Grant - (continued)  
Chain

S 88° 4' E on 29<sup>th</sup> Mile  
Over nearly level land, sloping  
East

6.00 Road Cross N. W. to S. and S.  
East to S.

4.00 Set a limestone 24 x 14 x 12 ins, 18  
ins in the ground, for the 28<sup>th</sup> mile  
cor. marked, S 113 on S, 12 on  
N, and 28<sup>th</sup> M on E faces; dig  
pits 36 x 36 x 12 ins, N 88° W and  
S 88° E of stone, 4 ft dirt, and raise  
a mound of earth 5 ft base, 2<sup>1</sup>/<sub>2</sub> ft  
high, S. of cor

58.00 Entrance sec line bet secs 35 and  
36, S 205, R 17 E, at a point from  
which the cor of secs 25, 26, 35 and  
36, bears North 35.42 chs dist

Set a sandstone 18 x 10 x 10 ins, 12 ins  
in the ground, for closing cor of

Extrins of the San Ignacio del  
Chains

fractures 35 and 36, marked C on  
N, S I D B on S, 36 on E and 35 on  
W faces. dig pits 24x18x12 ins  
N 7 ft and N 88° W of stone, 3 ft  
dist, and raise a mound of earth  
4 ft base, 2 ft high, N of cor.

8000 Set a limestone 24x12x10 ins, 18 ins  
in the ground, for the 29 mile cor  
marked S I D B on S, P L on N and  
29 W on E faces. dig pits 36x36x12  
ins N 88° W and S 88° E of stone, <sup>4 ft dist</sup> and  
raise a mound of earth 5 ft base,  
3 1/2 ft high, S of cor.

Ground, gently rolling

Soil, sandy and gravelly. end and  
end note

In timber.

S 88° 7' E on 30<sup>th</sup> Mile

Babeomari Point Land Grant Continued  
Claims

Over gently rolling land, sloping  
East

4.000 Set a Limestone  $24 \times 10 \times 8$  ins, 18 ins  
in the ground, for the  $29\frac{1}{2}$  mile  
cor, marked S T D B on S, P T on N  
and  $29\frac{1}{2}$  M on E faces; dig pits  
 $36 \times 36 \times 12$  ins,  $N 88^\circ W$  and  $S 88^\circ E$  of  
stone, 4 ft dist, under raise a mound  
of earth 5 ft base,  $2\frac{1}{2}$  ft high, S  
of cor.

87.87 Intersect S. Line bet Nos. 17 and 18  
E, at a point from which the cor of  
secs 25, 30, 31 and 36, T 20 S, R 17  
and 18 E, as heretofore described,  
runs North  $38.06$  Ebs dist

Set a Limestone  $24 \times 10 \times 8$  ins, 10  
ins in the ground, for closing  
cor of fractional secs 31 and 36, marked  
CC on N, S T D B on S, 31 on E and



Externs of the San Ignacio del  
Caminis

36 on W. face; dig pits  $24 \times 18 \times 12$   
ins  $77^\circ$  ft and  $N 88^\circ W$  of stone, 3  
ft dist, and raise a mound of  
earth 4 ft base, 2 ft high, N of cor.  
8000 Set a sandstone  $24 \times 12 \times 10$  ins, 18 ins  
in the ground for the 30 mile cor,  
marked 81513 on S, PL on N, and  
30 M on E face; dig pits  $36 \times 36 \times 12$  ins  
 $N 88^\circ W$  and  $S 88^\circ E$  of stone, 4 ft dist,  
and raise a mound of earth 5 ft base,  
2 1/2 ft high, S of cor.  
Land, rolling.  
Soil, gravelly; 2nd and 3rd rate.  
Autumn.

$S 88^\circ 4' E$  on 31<sup>st</sup> Mile

Over gently rolling land, sloping  
East.

4000 Set a limestone  $26 \times 16 \times 16$  ins, 20 ins

Subsidiary Tracts Land Grant - Continued  
 Claims

in the ground, for the 30½ mile cor,  
 marked S T D B on S, PL on N, and  
 30½ M on E. faces; dig pits 36 x 36 x 12  
 ins, N 88° W and S 88° E of stone, 4 ft  
 dist, and raise a mound of earth  
 5 ft base, 2½ ft high, S of cor.

5,000 Set a quarter stone 24 x 12 x 8 ins, 18 ins  
 in the ground, for the 31 mile cor,  
 marked S T D B on S, PL on N and  
 31 M on E. faces; and raise a mound  
 of stone, 3 ft base, 3 ft high, S of  
 cor, if impracticable.

Land, gently rolling

Soil generally; and mud 3rd rate.

No timber.

July 26, 1902.

S 88° 4' E, on 32nd Mile.  
 On smooth land sloping East.

Extremes of the San Ignacio del  
Chamis

- 17.90 Feet of gradual descent
- 18.50 Dig wash, 1 ch wide, course N. Easterly
- 20.00 Ascent
- 28.00 Pop, brow Northernly and Southernly  
and descent
- 32.50 Feet, brow Northernly and Southernly,  
and ascent
- 35.00 Pop, brow Northernly and Southernly, and  
begin gradual descent.
- 40.00 Set a lignite stone 26 x 16 x 6 ins, 20 ins  
in the ground, for the 31½ mile cor,  
marked ST 13 on S, PL on N, and  
31½ M on E. face, dig pits 36 x 36 x 12  
ins N 88° W and S 88° E of stone, 4  
ft dist and raise a mound of earth  
5 ft base, 22 ft high, S of cor.  
From this cor. Elgin water tank on  
the Arizona and New Mexico railroad  
bears N 2¼° N, about 1 mile dist.

Balcoomari Pointe Land Grant (continued)

Chains

- 71.30 Begin steep descent  
 74.00 Port and enter Balcoomari Valley  
 across S. Easterly  
 75.20 Balcoomari creek (dry) 30 lbs wide  
 across S. Easterly  
 80.00 Set a granite stone 24 x 12 x 10 ins, 18  
 ins in the ground, for the 32 mile  
 ev, marked S 75° 13' on S, 17° 2' on N  
 and 32 M. on E faces dig pits  
 36 x 36 x 12 ins, N 88° W and S 88° E  
 of stone, 4 ft dist, and raise a  
 mound of earth 5 ft low, 2 1/2 ft  
 high, S of ev.  
 Point, rolling  
 Soil gravelly; and rate  
 No timber.

S 88° 7' E on 33rd Mile  
 Over level bottom land



Extremities of the San Ignacio d.l.

- |        |  |
|--------|--|
| Chains |  |
| 2.26   | Road, bears N. Westerly and S. Easterly  |
| 2.63   | Wire fence, bears N. Westerly and S. Easterly  |
| 3.65   | Middle of single track of the Arizona and New Mexico railroad, bears N. Westerly and S. Easterly |
| 4.71   | Wire fence, bears N. Westerly and S. Easterly  |
| 4.85   | Telegraph line, bears N. Westerly and S. Easterly.   |
| 9.00   | Leave bottom and ascend  |
| 10.00  | Top, bears N. N. and S. E., thence over bench.   |
| 19.60  | Road, bears N. Westerly and S. Easterly  |
| 28.50  | Begin ascent from bench  |
| 31.50  | Top of gently rolling mesa, bears N. Westerly and S. Easterly                                    |
| 40.00  | Set a sandstone 26x10x8 ins, 20 ins  |

Subsidiary Private Land Grant continued  
 Thomas

in the ground, for the 32 1/2 mile cor.  
 marked S I O B on S, P L on N, and  
 32 1/2 M on E. face, and raise a  
 mound of stone 3 ft base, 3 ft high,  
 top cor. Pits impracticable.

- 42.84 Old wire fence bars N and S
- 45.60 Draw, 50 lbs wide, course S. Westerly  
and as end
- 49.70 Pop. bars N. Westerly and S.  
Easterly
- 62.50 Dry wash in draw, 20 lbs wide,  
course S. Easterly
- 68.00 Driven
- 73.00 Post, draw, 50 lbs wide course  
S. Westerly and as end
- 75.90 Old fence line, bars N and S.
- 81.00 Set a sandstone 24x8x8 ins, 18 ins  
in the ground, for the 33 mile cor  
marked S I O B on S, P L on N and

Excavations of the San Ignacio del  
Chinus

33 M on E. fovers. dig pits 36x36x12  
ins, N 85° W and S 85° E of stone,  
4 ft dist, and raise a mound of  
earth 5 ft base, 2 1/2 ft high, S of  
ex. Chapin's house S 15 1/2° E.

Land, rolling

Soil, gravelly, 3rd rate

No timber.

S 88° 7' E on 3/4<sup>th</sup> Mile

Over rolling land

8.00 Arsenic

13.00 Pot, and enter draw

16.00 Dry wash, 20 lbs nitre, course  
Southernly

21.00 Enter wash

23.20 Leave wash and arsenic

3.00 Pot and arsenic

37.00 Pot, base N. E. and S. E.

Superior Private Land Grant (continued)

- 37.50 Draw, 1 ch wide, course S. W. Slightly  
 38.00 Ascend  
 4.00 Dip, brass N. and S.  
 Set a gravity stone  $24 \times 10 \times 8$  ins, 18  
 ins in the ground, for the  $33\frac{1}{2}$   
 rods or marked  $8 \pm 0 B$  in S.  
 Pt on N. and  $33\frac{1}{2}$  W on E. face,  
 chg pts.  <sup>$36 \times 36 \times 12$  equal</sup>  $88^\circ N$  and  $S 88^\circ E$  of stone  
 4 ft dist, and raise a mound of  
 earth 5 ft base,  $2\frac{1}{2}$  ft high. S  
 of cor.  
 51.00 Draw, 1 ch wide, course S. W. Slightly  
 and ascend  
 55.00 Dip, brass N. and S.  
 57.00 Ascend  
 60.00 Dip, brass N. and S.  
 60.50 Draw, 1 ch wide, course Southw. by  
 61.00 Ascend  
 65.00 Dip, brass N. and S.



Extensions of the San Ignacio del  
Cruz

72.00

Descent

75.40

Foot, gulch 10 lbs wide, course S,  
and ascend

79.00

Top, bars N. and S.

80.00

Set a granite stone 24 x 16 x 12 ins, 18  
ins in the ground; for the 34 mile cor.  
marked B I B B on S. P L on N and  
34 M on E face; and raise a mound  
of stone 3 ft base 3 ft high, S of cor.  
Site impracticable.

Land, mountainous

Soil, gravelly; 3rd rate.

Not under.

Mountainous land, 80.00 chs

S 88° 4' E on 35<sup>th</sup> Mile

Over mountainous land

Descending

5.70

Dry creek, 30 lbs wide, course

## Pavlovskari Point and Summit Continued

Chains

- S. S. Westerly
- 1.00.00 Borely gully, 30 lbs wire, course  
S. Westerly
- 10.50 Asend
- 26.00 Top, bears Northerly and Southerly
- 32.00 Asend
- 34.00 Foot, bears N. Easterly and S.  
Westerly
- 36.00 Asend
- 42.00 Set a limestone 24 x 12 x 8 ins, 18 ins  
in the ground, for the 34½ mile  
cor, marked S I D B on S, P L on  
N and 34½ W on E. faces, and  
raise a mound of stone 3 ft base  
3 ft high, S of cor. Pts impracticable
- 43.00 Top, bears NE and SW, and  
descend.
- 49.00 Enter dense tundra undergrowth,  
bears Northerly and Southerly;

Extremities of the San Pignacio del  
Chains ft and was used

6.00 Pop of S. slope of high ridge, thence  
along said slope

71.50 Inlet, 10 lbs wide course Southerly

8.00 Set a limestone  $22 \times 12 \times 10$  ins, 10  
ins in the ground, for the 35 mile  
cov marked S D B on S. PL on N.  
and 35 M on E. faces and raise  
a ground of stone 3 ft base, 3 ft  
high, S. of cov. Pits impracticable.  
Land, mountainous

Soil, gravelly, stony and rocky,  
3rd and 4th rates

No timber, undergrowth, tsetse and  
cacti

Mountainous or land covered with dense  
undergrowth, 8.00 etc

July 27, 1902.

## Babson's Private Land Grant - continued

Chains

S 85° 4' E. on 36<sup>th</sup> Mch.  
Over mountainous land  
Ascending through dense forest and  
cacti.

. 78 Angle cor No. 5.

Set a limestone 24 x 12 x 8 ins / 18 ins  
in the ground, for angle cor No. 5,  
marked COR Δ No 5 on top, S T D B  
on S and WPL on N face, and raise  
a mound of stone 3 ft base, 3 ft high,  
S. of cor. Pits impracticable.

From this cor, center monument  
bars S 19° 4' 5" E, 125.40 chs dist  
San Jose peak, Sonora, Mexico, bears  
S 46° 10' E.

Bunker Hill bears S 83° E

Baldy peak, Santa Rita mountains,  
bears N 81° 30' W

Ranch house, bears S. 43½° E.



Extriors of the San Ignacio del  
 Chains  
 Ranch house brass S  $26\frac{3}{4}^{\circ}$  E.  
 Ranch house brass S  $10\frac{3}{4}^{\circ}$  E.

Plum N.  $70^{\circ}55'55''$  E.

Descending

9.00 Foot, drain, 1 ch wide, course Southwaly  
 and ascend

13.00 Top of ridge brass N. Westwaly and  
 S. Eastwaly

16.00 Descend

26.50 Foot, gully, 1 ch wide, course Southwaly  
 and ascend

39.22 The point for the  $35\frac{1}{2}$  mile cor falls  
 on limestone cropping  $20 \times 2$  ft <sup>above ground</sup> brass  
 N. and S., on which

Put a cross (x) at the exact cor pt  
 for the  $35\frac{1}{2}$  mile cor, marked S T O B  
 on S. pt on N. and  $35\frac{1}{2}$  M on E  
 side of cross, and raise a mound of

## Babecorari Smata Land Grant Continued

Chairs

stone 3 ft base, 3 ft high, S of cor. Pits  
impracticable.

40.50 Top of N slope, and descend

46.00 Foot, and ascend

52.00 Top, and descend

62.60 Foot of descent; dry wash 10 lbs wide  
Southward

67.80 Gulch, 20 lbs wide, curved Southward  
and ascend

72.00 Top, runs N and S

79.22 Set a calcareous stone 24x16x10 ins, 18  
ins in the ground, for the 36-mile cor,  
marked S E B on S, P on N and  
36 M on E face, and raise a mound of  
stone 3 ft base, 3 ft high, S of cor.  
Pits impracticable.

Land, mountainous.

Soil, gravelly and rocky 3rd and  
4<sup>th</sup> rates.

Extremes of the San Ignacio de  
Chains

Number

Mountainous land 8.000 Ch.

N.  $70^{\circ}55'55''$  E on  $37^{\text{th}}$  Mile.

Over mountainous land

8.00 Descend

14.80 Foot, dry wash 5 lbs wide, course  
S. Easterly

18.80 Ascend

37.00 Top of red porphyry ridge, 200 ft  
high, bears N and S; and begin  
descent of E slope.

40.00 Set a porphyry stone,  $36 \times 16 \times 8$  ins  
 $24$  ins in the ground, for the  $36 \frac{1}{2}$   
mile cor, marked S I B B on S, P L  
on N, and  $36 \frac{1}{2}$  W on E face, and  
raise a mound of stone 3 ft base, 3 ft  
high, S of cor. It's impracticable.  
This cor stands 60 ft below top of hill.

Bahigomari Private Land Grant - Continued

Chama

57.00 Foot bars N and S, thence on rolling land, through arborescens and cacti.

80.00 Set a sandstone 24 x 16 x 14 ins, 18 ins in the ground, for the 37 mile cor. marked S 45° 30' W on S. PL on W and 37° W on E. faces, dig pits 36 x 36 x 12 ins, S 70° 55' W and N 70° 55' E of stone, 4 ft dist and raise a mound of earth 5 ft base, 2 1/2 ft high S. cor.

Land rolling and mountainous  
Soil, gravelly, stony and rocky,  
3rd and 4th rates.

Vegetation, undergrowth, trees, sage  
and cacti.

Mountainous or land covered with  
dense, undergrowth, 8000 Ch.



Exterior of the San Ignacio well

Chains

N  $70^{\circ}55'55''$  E on 38<sup>th</sup> Mile  
Very rolling land

through dense undergrowth

4000 Set a sandstone  $24 \times 12 \times 10$  ins, 18  
ins in the ground, for the 37 $\frac{1}{2}$  mile  
cor. marked S I D B on S, P L on N  
and 37 $\frac{1}{2}$  <sup>m</sup> on E faces; dig pits  $36 \times 36 \times 12$   
ins, S  $70^{\circ}55'$  and N  $70^{\circ}55'$  E of stone  
4 ft dist and raise a mound of  
earth 3 ft base, 2 $\frac{1}{2}$  ft high, S of cor  
and dense undergrowth, brass  
N and S.

8000 The point for the 38 mile cor falls in  
dry wash to the north, course S.  
Easterly

8100 Set a sandstone  $28 \times 12 \times 10$  ins, 18  
ins in the ground, for witness cor  
to the 38 mile cor, marked <sup>NE</sup> S I D B  
on S, P L on N and 38 M on E faces,

Rabecanni Private Land Grant - Continued  
 Chain

and raise a mound of stone 3 ft  
 base, 3 ft high S of cor. Pits im-  
 practicable.

Land rolling.

Soil, gravelly, 2nd rate

No timber, undergrowth, brack

Some undergrowth, 4000 cu.

N 70° 55' 55" E on 39<sup>th</sup> Mile

Very gently rolling land

28.00 Old coral, base about 10 chs N.

40.00 Set a sapling stone 24 x 12 x 6 ins 18

ins in the ground, for the 38<sup>th</sup> mile

cor, marked S E D B on S, P L on N

and 38<sup>th</sup> M on E face; and raise

a mound of stone 3 ft base, 3 ft high

S. of cor. Pits impracticable.

47.80 Dry wash, 40 chs wide, course S

Easterly

Exteriors of the San Ignacio del  
Chain

8.000

Set a sandstone  $24 \times 12 \times 10$  ins, 18  
ins in the ground, for the 39 mile  
cor, marked S T B on S, PL on W  
and 39 M on E face, dig pits  
 $36 \times 36 \times 12$  ins, S  $70^{\circ}55'$  W and N  $70^{\circ}55'$  E  
of stone, 4 ft dist, and raise a mound  
of earth 5 ft base,  $2\frac{1}{2}$  ft high, S  
of cor.

Land, gently rolling

Soil, sandy and gravelly, red and  
but rate

No timber, unarrrowth scattering mosquito

N  $70^{\circ}55'55''$  E cor 40<sup>th</sup> Mile.

Over gently rolling land

4.000

Set a sandstone  $24 \times 8 \times 8$  ins, 18 ins  
in the ground for the 39 $\frac{1}{2}$  mile cor.  
marked S T B on S, PL on N and  
39 $\frac{1}{2}$  M on E face, dig pits  $36 \times 36 \times 12$

## Balscomari Private Land Grant - Continued

Chumis

ins,  $S 70^{\circ} 55' W$  and  $N 70^{\circ} 55' E$  of stone  
4 ft dist, and raise a mound of earth  
5 ft base,  $2\frac{1}{2}$  ft high, S. of cor.

72.60 Old road, bears N. Westward and S.  
Easterly

8.00 Set a sandstone  $24 \times 14 \times 10$  ins, 18  
ins in the ground, for the 40 mile cor.,  
marked STDB on S, PL on W, and  
40 M on E face, set pits  $36 \times 36 \times 12$  ins  
 $S 70^{\circ} 55' W$  and  $N 70^{\circ} 55' E$  of stone, 4  
ft dist, and raise a mound of earth  
5 ft base,  $2\frac{1}{2}$  ft high, S of cor.

Land, gently rolling

Soil, gravelly, sand and ord. rocks

No timber.

July 28, 1902.

July 29, 1902. At 5:30<sup>h</sup> a.m. left  
Port off  $31^{\circ} 40'$  on the lat. arc.



Extremes of the San Ignacio del  
Chinas

15° 53' N. on the steel arc, and  
determined a true meridian with the  
solar at the 40 mile cor

Plumer Drum

N 70° 53' 55" E on 41<sup>3/4</sup> Miles  
Over level mesa

3.00 Enter dense mesq. into underground  
brass Northward and Southward

4.00 Set a sandstone 26 x 8 x 8 ins, 18 ins  
in the ground, for the 40 1/2 mile cor  
marked S I D B on S, PL on N and  
40 1/2 M on E face, dig pits 36 x 36 x 12  
ins S 70° 53' N and N 70° 53' E of stone  
4 ft dist, and raise a mound of earth  
5 ft base, 2 1/2 ft high, S of cor.

78.20 Old road, brass N, and S.

8.00 Set a sandstone 24 x 12 x 10 ins, 18 ins  
in the ground, for the 41 mile cor  
marked S I D B on S, PL on N and

Balconian Private Land Grant - Continued  
Chain

41 Mon E face, dig pits 36 x 36 x 12 ins,  
S 70° 55' W and N 70° 55' E of stone,

4 ft dist and give a mound of earth  
5 ft base, <sup>22 ft high</sup> S of cor.

Land level.

Soil, gravelly, 2nd rate,

No timber, undergrowth, mesquite.

No undergrowth, 5,000 chs.

N 70° 55' 55" E on 42nd Mile.

Cor level mesa

Through stone undergrowth.

4000 Set a sandstone 24 x 16 x 12 ins, 18 ins in  
the ground, for the 41½ mile cor.

marked S I D B on S, P L on W and

41½ Mon E face, from which a  
mesquite 10 ins diam, bears N 25° W,

3.35 the dist, marked S I D B 41½ W

P. 7, dig pits 36 x 36 x 12 ins, S 70° 55' W,

Extremes of the Sun Equino del  
 Chain

and N  $70^{\circ}55'$  E of stone, 4 ft. dist,  
 and raise a mound of earth 5 ft  
 base 22 ft high, S. of cor.

63.50 Old road, Cross N. Westerly and S.  
 Easterly

8.00 Set a sundstone 24 x 10 x 8 ins 18 ins, in  
 the ground for the 42 mile cor, marked  
 8.15.13 on S, P. on N and 42 M  
 on E face, dig pits 36 x 36 x 12 ins,  
 S.  $70^{\circ}55'$  W and N.  $70^{\circ}55'$  E of stone, 4 ft  
 dist, and raise a mound of earth  
 5 ft base 22 ft high, S. of cor.

Found bird

Soil, gravelly, and rats.

No timber, undergrowth, mosquito  
 and yucca

Dense undergrowth, 8.00 Ch.

N  $70^{\circ}55'55''$  E on 43rd Mile



## Baltimore Private Land Grant - Continued

Chain

Very long land

Through dense undergrowth

8.00 Old road, Cross N. Easterly and S. Westerly.

41.00 Set a granite stone 24 x 10 x 8 ins, 18 ins in the ground, for the 42  $\frac{1}{2}$  mile cor, marked S I D B on S. P L on N and 42  $\frac{1}{2}$  M on E. <sup>on E. face</sup> dig pits 36 x 36 x 12 ins, S 70° 55' W and N 70° 55' E of stone, 4 ft dist, and raise a mound of earth 5 ft base, 2  $\frac{1}{2}$  ft high, S of cor.

8.00 Set a granite stone 24 x 16 x 12 ins, 18 ins in the ground, for the 43 mile cor, marked S I D B on S. P L on N and 43 M on E. <sup>on E. face</sup> dig pits 36 x 36 x 12 ins, S 70° 55' W and N 70° 55' E of stone, 4 ft dist, and raise a mound of earth 5 ft base, 2  $\frac{1}{2}$  ft high, S of cor.



Exterior of the San Ignacio del  
Chamis

Level level

Soil gravelly, 2nd and 3rd rates

No timber, undergrowth, sage, mesquite  
and tsoota.

Dense undergrowth 8000 ft.

X

N  $70^{\circ}55'55''$  E on 44<sup>th</sup> Mile.

Level level

Through dense undergrowth

22.20 Old road bears N. Westerly and S.  
Easterly

40.00 Set a granite stone  $26 \times 12 \times 10$  ins, 20  
ins in the ground, for the  $43\frac{1}{2}$  mile  
cor, marked S I O B on S. PL on N  
and  $43\frac{1}{2}$  W on E face. Dig pits  
 $36 \times 36 \times 12$  ins, S  $70^{\circ}55'$  N, and N  $70^{\circ}55'$   
of stone, 4 ft dist, and raise a mound  
of earth 5 ft base, 22 ft high, S of  
cor.

## Baffinman Private Land, Grant-Continued

Cham

8.00

Set a granite stone  $24 \times 16 \times 12$  ins, 18 ins  
in the ground, for the 44 mile cor,  
marked S 70° 13' on S, PL on W and  
44 W on E. face. dig pits  $36 \times 36 \times 12$   
ins, S 70° 55' W and N 70° 55' E of  
stone, 4 ft dist, and raise a mound  
of earth, 5 ft base, 2½ ft high, S.  
of cor.

Cor level

Soil, gravelly; 2nd and 3rd roots  
No timber, mesquite, tsetse and sage  
undergrowth

Dense undergrowth 8.00 ch

July 29, 1902.

N 70° 55' 55" on 45<sup>th</sup> Mile

Cor level land

Through dense undergrowth

4.00

Set a sandstone  $24 \times 12 \times 10$  ins, 18 ins

Extreme of the San Ignacio del

Chains

The ground for the 44½ mile cor.  
marked S I D B on S. PL on N and  
44½ W on E faces dig pits 36 x 36 x 12  
ins, S 70° 55' W and N 70° 55' E of  
stems, 4 ft dist and raise a mound  
of earth 5 ft base, 2½ ft high S  
of cor.

8.00 Set a granite stem 24 x 10 x 7 ins, 18  
ins in the ground, for the 45 mile  
cor, marked S I D B on S. PL on N.  
and 45 W on E faces dig pits  
36 x 36 x 12 ins, S 70° 55' W and N 70° 55' E  
of stem, 4 ft dist, and raise a mound  
of earth 5 ft base, 2½ ft high. S of  
cor.

Land level

Soil, gravelly. 2nd and 3rd rate  
No timber, undergrowth, mesquite,  
trotta and sage.



Bahamas Private Land Grant - continued  
 Channel  
 Dense undergrowth, 8000 chs.

N  $70^{\circ}55'55''$  E, on 46  $\frac{1}{2}$  Miles

Over level land

Through dense undergrowth.

37.84 Ang C cor No. 6

Set a granite stone  $24 \times 10 \times 6$  <sup>ins</sup>, 18 ins in  
 the ground, for angle cor No. 6  
 marked C O R  $\Delta$  No. 6 on top, S I D B  
 on S.W. and P L on N.E. <sup>faces</sup>; dig pits  
 $36 \times 36 \times 12$  ins, S  $70^{\circ}55'$  W and S  $19^{\circ}4'$  E  
 of stone, 8 ft deep, and raise a mound  
 of earth 5 ft base, 2  $\frac{1}{2}$  ft high, S.W.  
 of cor. Measure back base N  $70^{\circ}45'$  W. Same for same,  
 S  $19^{\circ}45'$  E  
 Stone S  $19^{\circ}4'5''$  E

3.16

Set a granite stone  $24 \times 10.7$  ins, 18 ins  
 in the ground, for the 45  $\frac{1}{2}$  mile  
 cor, marked S I D B on W, P. L. on  
 E and 45  $\frac{1}{2}$  W on S face, dig pits



Extension of the San Ignacio del

Chains

36x36x12 ins, N 19° 4' W and S 19° 4' E  
of stone, 4 ft dist and raise a mound  
of earth 5 ft base, 2 1/2 ft high, W  
of cor.

Completion of the 46<sup>th</sup> mile.  
43, 16, Set a sandstone 24x16x6 ins, 18 ins  
in the ground for the 46 mile cor  
marked 8 II B on W, PL on E and  
46 W on S face, dig pits 36x36x12 ins  
18 ins in the ground N 19° 4' W and  
S 19° 4' E of stone, 4 ft dist and raise  
a mound of earth 5 ft base, 2 1/2 ft  
high W of cor.

Ground rolling and level

Soil, gravelly, 2nd and 3rd rates

Not timber, undergrowth, mosquitos,  
frogs and sage.

Dense undergrowth to 8000 chs.

S 19° 4' 5" E on 47<sup>th</sup> Mile

## Babecornai Private Land Grant - Continued

Chains

Very rolling land

Through dense undergrowth

4.000 Set a granite stone 24 x 10 x 8 ins, 18 ins in the ground, for the 46 1/2 mile cor, marked S T D B on W. P L on E and 46 1/2 W on S face. Dig pits 36 x 36 x 12 ins N 19° 4' W and S 19° 4' E of stone, 4 ft dist, and raise a mound of earth 5 ft base, 2 1/2 ft high, W of cor.

8.000 Set a sandstone 24 x 10 x 6 ins, 18 ins in the ground, for the 47 mile cor. marked S T D B on W, P L on E and 47 W on S. face. Dig pits 36 x 36 x 12 ins, N 19° 4' W and S 19° 4' E of stone, 4 ft dist, and raise a mound of earth 5 ft base, 2 1/2 ft high, W of cor.

Land, rolling.

Extrinsic of the San Ignacio and  
Chavis

on the southwestern part of the grant on the slopes of the Camelo Hills, and a few cottonwoods, ash and walnuts are found along the creeks. The grant is fairly well watered for a distance of about nine miles from a point  $1\frac{1}{2}$  miles Easterly of Elgin station to as far as Huachuca Spring. The remaining portions of the grant are however, dry except during the rainy season. The Arizona and New Mexico railroad runs through the grant for about 18 miles, following the bottom of the Balconaria, crossing grant near the 32nd mile cor. of the exterior boundaries. There are a number of settlers along the Balconaria creek who are engaged in farming and stock raising. In running the



## Babcomari Private Land Grant - Concluded.

Chamie

exterior P. was made, <sup>to locate,</sup> all of the improvements, as the same were not always visible from the exterior of the grant. However, I have approximately the same on the accompanying plat.

Philip Cortzen  
U. S. Deputy Surveyor

---



List of Names.

BOOK 1764

114

A list of the names of the individuals employed by Philip Couzner

U S. Deputy Surveyor, to assist in running, measuring and marking the lines and corners described in the forego-

ing Field Notes of the survey of the Ex. Termino of the San Ignacio del Balconero Private Land Grant situated partly in Tps. 20<sup>th</sup> & 21<sup>st</sup> S. R's. 17-18-19<sup>th</sup> of 20

of the Gila and Salt River Base and Meridian, in the Territory of Arizona, showing the respective capacities in which they acted.

John M. Trazer Chainman.

Andrew Aiken Chainman.

Chainman.

Chainman

Jim Pogue Axeman.

F. C. Howard Axeman.

Paul Redd Flagman.

11-719

suffer the penalty of perjury, under the provisions of an act of Congress approved August 8, 1846.

*Philip Conz*  
U. S. Deputy Surveyor.

Sworn to and subscribed before me this..... 1<sup>st</sup>

day of *August*..... 190*2*

**OLINTON D. HOOVER, Clerk,** *Pima County*  
*District Court.*  
By *F. J. [Signature]* Deputy

BOOK 1764

of the said Sub. [unclear] and [unclear] in the [unclear]  
claim of [unclear] as represented in the foregoing [unclear]  
[unclear] has been [unclear] by me and under my [unclear]  
hand and I do further solemnly swear that all the contents of  
and [unclear] has been established and [unclear] in that  
connection with the [unclear] of [unclear] [unclear]  
special instructions of the United States Survey-General  
for Arizona and in the specific manner described in the  
field notes and that the foregoing are the true field notes  
of such survey and [unclear] and [unclear] I will

## APPROVAL.

OFFICE OF THE U.S. SURVEYOR GENERAL.

Phoenix, Arizona.

Sept. 10 - 1902.

The foregoing field notes of the survey of exteriors of San Ignacio del Babocomari private land grant executed by Philip Contzen, D.S. under his Contract No. 95 dated June 20, 1902, having been critically examined, and the necessary corrections and explanations made, they describe, are hereby approved.

Hugh L. Price

U.S. Sur. Gen. for Arizona.