

SUBDIVISION

1785

FT. MC DONWELL

1.

CONTRACT

76.

BOOK 1785

1785

4-071

FIELD NOTES

GENERAL LAND OFFICE

1785

1785

1785

expanded

Field Notes

of the survey of the  
 Subdivision of the  
 St. McDoull Military Reservation  
 and  
 Meander Lines of the  
 Pecos River and Sycamore Wash.  
 of  
 Townships 3 and 4 N, Ranges 6 and 7 E  
 of the  
 Gila and Salt River Basins and Mexican  
 in the  
 Territory of Arizona  
 As surveyed by  
 Philip Conzgen  
 Comptroller and U.S. Deputy Surveyor  
 under contract No. 76  
 Dated June 19, 1900

Survey commenced February 8<sup>th</sup>, 1900  
 Survey completed March 8, 1900

1A

# Preliminary Oaths of Assistants.

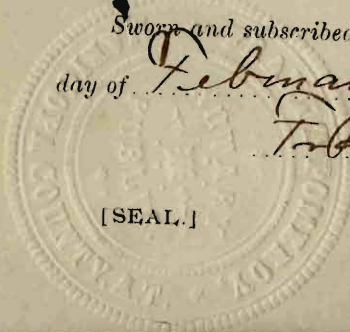
We, *Frank Carlton Howard*  
 and *John M. Trayer*  
 do solemnly swear that we will well and faithfully execute  
 the duties of Chain Carriers; that we will level the chain  
 upon even and uneven ground, and plumb the tally pins,  
 either by sticking or dropping the same; that we will report  
 the true distance to all notable objects, and the true lengths  
 of all lines that we assist in measuring, to the best of our  
 skill and ability, and in accordance with instructions given  
 us, in the survey of the *subdivision lines*  
*of Tps. 3 & 4 North Ranges*  
*6 and 7 East within the*  
*Fort McDowell Military*  
*Reservation; and meander lines*  
*of Verde River and of Sacamore Wash*  
 of the Gila and Salt River Base and Meridian, in the Ter-  
 ritory of Arizona.

*Frank Carlton Howard* Chainman.  
*John M. Trayer* Chainman.  
 ..... Chainman.  
 ..... Chainman.

Sworn and subscribed before me, this *5th*  
 day of *February* 190 *2*

*Frank T. Pomeroy*  
 Notary Public.

[SEAL.]



We, *Walter Percival*, *Frederick*<sup>2</sup>

*Austin* and *C. R. Barthelmy*

do solemnly swear that we will well and truly perform the

duties of *flagman* and  
*axemen*

in the establishment of corners and other duties, according

to instructions given us, and to the best of our skill and

ability, in the survey of the *subdivision*

*lines of Tps 13 and 4 North*

*Ranges 6 and 7 East*, within

the *Fort M. D. Donnell Military*

*Reservation*, and *meander lines*

*of Verde River and of Sycamore Wash*

of the Gila and Salt River Base and Meridian, in the Ter-

ritory of Arizona.

*Walter Percival* Flagman.

*Frederick Austin* Axeman.

*C. R. Barthelmy* Axeman.

Axeman.

Subscribed and sworn to before me this *8<sup>th</sup>*

day of *February* 190*2*

*Frank T. Ramsey*

Notary Public.

— INDEX —

3

index  
for

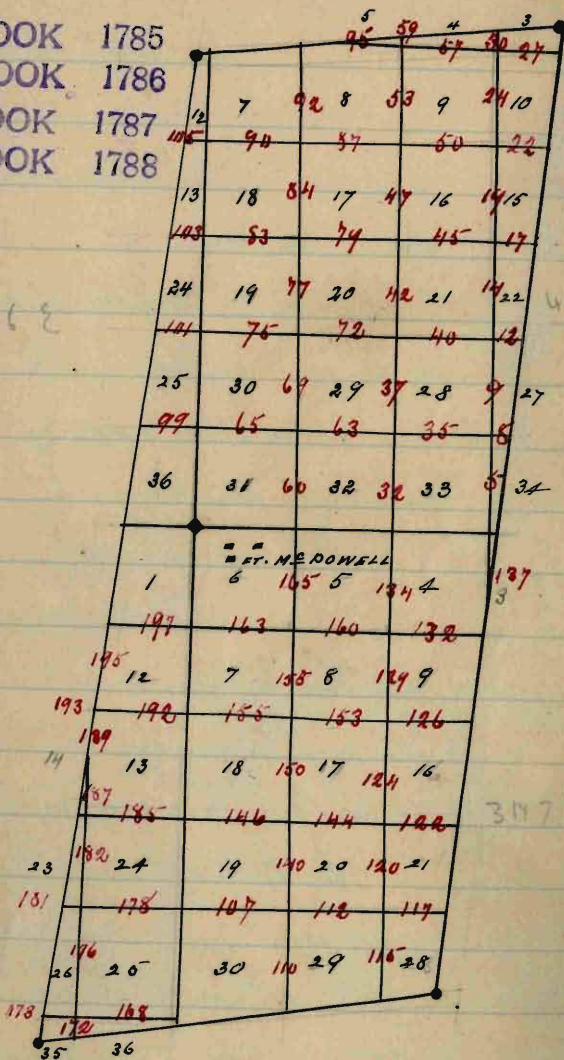
BOOK 1785  
BOOK 1786  
BOOK 1787  
BOOK 1788

LN 62

LN 76

3N 6 E

3N 7 E



Submission of Ft McDowell Mil Bns.

Chains

Survey commenced February 8, 1902, and executed with a Young & Sons light mountain transit No. 5609 with Smith's solar attachment.

The instrument was examined, tested on the true meridian at Tucson, and was approved by the surveyor general for Arizona.

I begin at the <sup>corner</sup> ~~corner~~ of sec. 3, 4, 08 and 34, on the S. E. of T. 47, R. 16, established by Homer Linton, U.S. deputy surveyor, as heretofore described. Examine the adjustments of the transit and find them to be correct.

At 5<sup>h</sup> 30<sup>m</sup> a.m. I run to Port of 38° 35' on the lat. arc, 15° 4' S. in the decl. arc and determine a true meridian with the solar at the

Apr 4 A, 1878

Chains

above cor.

Turner Farm

No 2' N, bet. ores 33 and 34.

From cor point in wash

Over hill land

Through spruce grove and cacti

1.50 Dry wash, 40 lbs wide, course N. Westly

2.00 Over draw course N. Westly, Turner

over rolling land.

13.00 Begin steep descent.

15.00 Part and enter Lyman's Valley, leave

N. Westly and S. Eastly.

15.50 Road from N. Westly and S. Eastly

and enter dense brush and

mesquite.

17.20 Dry wash, 40 lbs wide, course N.

Westly.

25.80 Left bank Lyman's wash leave

N. Eastly and S. Westly

Subdivision of Ft McDowell Military  
Chert

Set a sandstone 18x16x8 ins, 12 ins  
in the ground for marker cor of  
fract sec 33 and 34, marked M C  
on N. with 3 grooves on E face from  
which a mosquito 4 ins diam, bears  
S 17 1/2° E, 181 lbs dist, marked P 47,  
B 7 E, S 34, M C B D.

Shore across wash

4 000 The point for 1/4 sec cor falls in  
wash.

4 590 Right bank Lycamun Wash, bears  
N. Easterly and S. Westerly

Set a sandstone 18x12x8 ins, 12 ins in  
the ground, for marker cor of fract  
sec 33, and 34, marked M C on S.  
with 3 grooves on E. face, from which  
a mosquito 14 ins diam, bears N 42° E,  
93 lbs dist, marked P 47, B 7 E,  
S 34, M C B D.



Observation, S 47, 167 E - Continued

Chain

A mesquite 36 ins diam, base of 75° N, 54 lbs dist, marked S 47, 167 E, 533 M. C. B. P. and base dense bracta brush and mesquite and enter pale sand and grasswood.

74.70 Deep well by gulch, 150 lbs well, corner S. Easterly.

8.000 Set a sandstone 26 x 16 x 12 ins, 16 ins in the ground, for the use of well 27, 28, 33 and 34, marked with 1 notch on S. and 3 notches on E. edge, from which a pale sand 8 ins diam, base of 17° N, 158 lbs dist, marked S 47, 167 E, S 28, B. P. dig pits 18 x 18 x 12 ins, in each set, 2 ft dist and raise a mound of earth 4 ft base, 2 ft high, N. of ea. mound level and rolling Soil, gravelly and sand, Ord and

Subdivision of Ft. McDowell Military  
Chain+ 1<sup>st</sup> rate.

Pinel, palo verde, mesquite and a  
few cottonwoods in wash, undergrowth  
grasewood, palo verde, mesquite,  
Sarcota bush, sage and creosote  
Giant Cactus  
Dense undergrowth, 5000 ch.

East on a trail line bet 27  
27 and 34.

Over land line.

Through dense grasewood.

5.00

Right bank of common wash, base  
N. Castaly and S. Wisterly

Set a sandstone 18 x 14 x 10 ins, 10 ins  
in the ground, for marker over  
of face 27 and 34, marked M.C.  
on E. face with groove on S. face,  
dig a pit 36 x 36 x 12 ins, 8 ft W

Observation; P 4 N. B 7 E - Continued

Chains

of stone and gravel ground of earth  
4 ft base, 2 ft high, N. of cor.  
(From this point the line eastward  
became impracticable on account of  
rough and broken ground).

Good land.

Soil, gravelly, and water.

No Embry undergrowth, grasswood  
None undergrowth, s. c. ch.

N. o' e' N. lat. area 27 and 28.

Over rolling land.

Through dense grasswood and pale

land

- 2.40 Bond, from N. Easterly and S. Westerly  
8.40 Dry wash, 40 lbs wide, corner S. Easterly  
9.00 Draw, 2 ch wide, corner S. Easterly  
10.50 Begin ascent of S. W. slope of ridge  
17.00 Top of ascent, from E. and N. S. of

Subdivision of Pt McDowell Military

Claims

24.00

ridge, brass 2.50 chs E and cross road  
Best gully 10 lbs wide, runner S  
Westerly, and return cross road  
actual.

26.00

around S. W. slope of ridge

30.00

Post, brass N. Westerly and S. Easterly

30.70

Trail, brass Easterly and Westerly  
Traces over broken land.

40.00

Set a sandstone 18 x 10 x 8 ins 12 ins  
in the ground, for  $\frac{1}{4}$  sec ea marked  
28 on W. and 27 on E. faces from  
which a pale sand, 6 ins diam, brass  
N 81° E, 16 lbs dist, marked  $\frac{1}{4}$  S 27, B. P.  
A pale sand 4 ins diam, brass N 25° W,  
69 lbs dist, marked  $\frac{1}{4}$  S 28, B. P.

48.65

Dry wash, 20 lbs wide, runner S.  
Westerly

58.60

Dry wash, 15 lbs wide, runner S. Westerly

67.00

Trail, brass N. Easterly and S. Westerly

## Observations, S 47, R 7 E continued

Chassis

- 70.30 Dry wash 30 lbs wide (summit) Westly
- 71.00 Down 2 chs wide (summit) Westly
- 76.00 Descend
- 78.00 Post dry wash 15 lbs wide, (summit) S. Westly, and ascend.
- 80.00 Set a malpais stone 18x8x8 ins, 12 ins in the ground, for the cor of ore 21, 22, 27, and 28 marked with a notch on S and 3 notches on E. ridge, from which a pale road 8 drms long N.  $40^{\circ} 9'$  E 21 lbs dist, marked S 47, R 7 E, S 22 B. D.
- A pale road 6 ins diam from S  $68^{\circ} 2'$  E 143 lbs dist, marked S 47, R 7 E, S 27, B. D.
- A pale road 6 ins diam, from S  $42^{\circ} 7'$  116 lbs dist, marked S 47, R 7 E S 28, B. D.
- A pale road 6 ins diam, from S  $49^{\circ} 7'$

Submission of St. M. C. Howell Military

Chronic

114 The dist. marked S 4 N, R 7 E,  
S. 21, B. 3 and raised a mound of  
stone 3 ft base, 2 ft high, W of cor.  
Ground rolling broken and mountainous  
Soil thin and gravelly 3rd and  
4<sup>th</sup> rate.

Timber, pale woods and mesquite,  
undergrowth, grasswood, pale  
Tweed and Sueti.

Grout Sueti.

Some undergrowth 8000 ch.

East on a trail line but see ea  
and ex.

Over rolling land; See ending.  
Plunged down pale woods

175 Port

175 Dry wash, 10 lbs. water, (some) S. M. C. Howell

175 Second

Prognosis, P 47, R 7 C - Continued

Chronicle

- 4.00 Popl. from N. Easternly and S. Westernly;  
 Thinner over broken and rolling land
- 20.90 Dry wash, 20 lbs wide (unrav. S. Westernly)
- 25.76 Intersect E. by of the Pt M'Donnell  
 Military Reservation, at a point from  
 which the  $7\frac{1}{2}$  mile cor. of the by  
 bears  $S 6\frac{3}{4}^{\circ} W$ , 30 lbs. dist.

Set a quartz stone  $20 \times 14 \times 12$  ins. 14  
 ins in the ground, for closing cor.  
 of frac. Sec 22 and 27, marked  
 C, Pt M'D on W, P L on E, 22  
 on N. and 27 on S faces, and raise  
 a mound of stone 3 ft base 2 ft high  
 N. of cor. Pts impracticable.

Land, rolling

Soil, gravelly, 3rd rate

Barber's spals & beds, underground  
 grasswood spals & beds, underground, local  
 Sand (local).

Subdivision of St McDowell Military  
Chains

Point actual.

Down undergrowth, 25.76 chs.

N. 0° 2' W bet. sees 21 and 22

Over mountains land.

Ascending through dense grassland,  
fate woods and cacti.

4.00 Top of ascent, base E. and W.

6.00 Descend

8.00 Foot and ascent

9.60 Top of ridge, base East and  
West, and descend

11.40 Foot

14.50 Dry wash, 20 lbs. water, course S.  
West, and ascend

18.00 Top, base N.W. and S. and descend

19.50 Foot and ascent

22.00 Top of spur, base West, and  
descend



## Resurrection, S 4 N. B. 7 E. - Continued

6 hrs

- 21.00 Port, and ascend
- 21.20 Top
- 23.00 Descend
- 26.50 Port, dry wash, 40 lbs rock, course  
Westerly, and ascend
- 33.00 Top of ridge, course  $\frac{1}{2}$  Westerly and  
S. Easterly, and descend
- 36.00 Port, and ascend
- 38.00 Top and descend
- 40.00 Set a gnomon stone 18 x 8 x 5 ins, 12 in  
in the ground, for  $\frac{1}{4}$  sec, marked  
 $\frac{1}{4}$  21 on N, and 22 on E face, from  
which a pale rod 6 ins diam, bears  
N  $40^{\circ}$  E, 163 lbs dist, marked  $\frac{1}{4}$  S 22 B.  
A mesquite 15 ins diam, bears  $75^{\circ}$  W,  
221 lbs dist, marked  $\frac{1}{4}$  S 21, B.D.
- 40.36 Port, and enter draw, course S. W.
- 42.00 Leave draw, and ascend
- 42.50 Top, and descend

Submission of St. McDowell Military

Chains

44.00

Post

48.20

Dry wash, 50 lbs. water, course S. West by

49.00

ascend

51.00

Post

51.40

Descend

53.30

Post, dry wash, 20 lbs. water, course S. West by, and ascend

59.00

Post of spur and descend

61.00

Post

62.40

Dry wash, 40 lbs. water, course West by

63.20

ascend

66.30

Post

72.00

Descend

77.90

Post, dry wash 10 lbs. water, course N. and ascend

80.00

Set a sandstone 18 x 8 1/2 ins, 12 ins. in the ground, for the cor. of sec 15, 16, 21 and 22, marked with 3 notches on S. and 3 notches on E. edge, from which

## Reservation, P 4 N, R 7 E - Continued

Chassis

a pole 7 rods 4 in diam, base S 66° E,  
 54 lbs dist, marked P 4 N, R 7 E, S 2207.  
 A pole 7 rods 4 in diam, base N 79° 4' W,  
 47 lbs dist, marked P 4 N, R 7 E, S 11  
 B, D, no other trees within limits, and  
 a pair of stumps of stone 3 ft base  
 1 1/2 ft high, N. of cor. P 4 N, R 7 E, S 11  
 B, D.

Land, mountainous.

Soil, gravelly; good rate.

Bush, pole 7 rods and mesquite; un-  
 dergrowth, grass and broom, pole  
 7 rods and cacti.

Grant cactus

Mountainous land, or land covered  
 with dense undergrowth, 5,000 ac.

East, on a true line bet sec 10 and 22.  
 Over rolling land.

Subdivision of the Ft McDowell Military  
 Claims

Through dense grasswood.  
 28.50 Dry wash 50 yds wide canal S. W. side  
 32.10 Dry wash 15 the wide canal S. W. side  
 34.90 In end  
 35.10  
 35.34

Pit and drainage  
 Part set E. end of the Ft McDowell  
 Military Reservation at a point from  
 which the E. end of the bay  
 bears  $76^{\circ} 74' E$ , 88 the dist.

Set a malpais stone  $18 \times 8 \times 8$  ins, 12  
 ins in the ground, for closing cor of  
 punch sees 15 and 22, marked C. C.  
 Pt McD on N, P L on E, 15 on W,  
 and 22 on S. face, and raise a  
 mound of stone 3 ft base, 2 ft high,  
 W of cor. Pits impracticable.

Ground, rolling

Soil gravelly; 3rd rate.

Timber scattering scale Ponderosa, un-  
 dergrowth, grasswood, mesquite,

Wormtongue, P 4 N, R 7 E - Continued

Chain

troglodytes and caetit.

Prunt Cactus

Dense undergrowth, 30-34 ch.

February 5, 1902.

No. 2' W, bet secs 15 and 16

Over mountainous land

Ascending through dense grasswood

7.20 Top of ridge, base N. Westly and  
S. Eastly, and descend

9.00 Foot.

13.00 Dry wash, 1 ch wide, corner S. Eastly

26.40 Same wash, 80 lbs wide, corner S.  
Westly

27.85 Same wash, 20 lbs wide, corner S.  
Eastly

29.75 Same wash, 20 lbs wide, corner S.  
Westly, and ascend

35.50 Top of ridge, base N. Westly and

Subdivision of the St. McDonald Military  
Claims

- S. Easterly, and descend  
 40.00 Set a monument  $18 \times 14 \times 8$  ins, 12 ins  
 in the ground, for  $\frac{1}{4}$  sec in, marked  
 $\frac{1}{4}$  16 on N and 15 on E face, from  
 which a pole & rode 5 ms down base  
 S  $19\frac{1}{2}^{\circ}$  E, 11 lbs dist, marked  $\frac{1}{4}$  5  
 15 B.S.  
 A pole & rode 6 ms down, base  
 S  $39\frac{1}{2}^{\circ}$  W, 18 lbs dist, marked  
 $\frac{1}{4}$  S 16 B.S.
- 52.00 Foot of descent
- 53.60 Dry wash 80 lbs rods, course N.  
 Westerly
- 57.00 Road
- 59.00 Top of ridge, base Easterly and  
 Westerly, and descend
- 62.00 Foot dry wash 80 lbs rods, course  
 S. Westerly, and ascend
- 63.50 Top, and descend

## Resignation, P 47, R 7 E - Continued.

- 65.00 Port
- 68.00 Dry wash, 30 lbs wide, course S.  
Westerly, and ascend
- 71.00 Port, and descend
- 74.00 Port
- 75.00 Dry wash, 70 lbs wide, course N.  
Westerly
- 77.00 Ascend
- 79.00 Top of spur, bear Westerly, and descend
- 79.20 Set a sandstone 13 x 5 x 5 ins, 12 ins in  
the ground, for entrance cor to cor of  
secs 9, 10, 15 and 16, marked W. C.  
with 4 notches on S and 3 notches  
on E edges, from which a magnetic  
line drawn, bears N. 76° W, 171 lbs  
dist marked W. C. P 47, R 7 E, S 9  
B. P. no other trees within limits,  
and raise a mound of stone 2 ft  
base, 1 1/2 ft high, W of cor. sets

Submission of Lt. W. Donnell Military

Chairs

impracticable.

8.00 - The point for ore falls in dry  
much, as the mine, some 100 rods  
land, mountains.

Soil, gravelly; soil rate.

Timber, pale fields and meadow,  
undergrowth grasswood, brodiaea  
and cacti.

Point Cactus.

Mountainous land or land covered  
with dense undergrowth, some cacti.

East on a trail line but ore is  
under 15.

Ore mountains land

ascending through cutting pale  
fields and grasswood.

8.00 Top of ridge, and descend

10.00 Foot, and ascend



## Resurrection, S 47, R 48 - Continued

- 13.50 Pop, and descend  
 16.10 Port, dry wash 10 lbs wide, corner  
 S. Easterly, and ascend  
 18.00 Pop, and descend  
 19.00 Port, dry wash 20 lbs wide, corner  
 Southerly, and ascend  
 24.00 Pop, and descend  
 27.00 Enter dense grasswood, brush N. and S.  
 29.00 Port, dry wash 20 lbs wide corner S.  
 Westerly, and ascend  
 4.00 Pop  
 Set a sandstone 15x8x6 ins, 12 ins in  
 the ground for  $\frac{1}{4}$  sec cor, marked  
 $\frac{1}{4}$  N. on N. and 15 on S. face; and  
 raise a mound of stone 2 ft base,  
 $1\frac{1}{2}$  ft high N. of cor. 1<sup>st</sup> im-  
 practicable.  
 45.00 Enter net E. side of the St. McDowell  
 Military Reservation at a point from

Subdivision of Pt McDowell Military  
Chains

which the 5<sup>th</sup> mile cor of the base  
bears S. 63<sup>o</sup> 4' W. in the dist.

Set a sandstone 18 x 8 x 5 ins, 12 ins  
in the ground, for closing cor of  
frac. sec 10 and 15, numbered C 6

Pt McD on N, P 6 on E, 10 on 7  
and 15 on S. faces, and raise a

monument of stone 3 ft base, 3 ft high  
N of cor. Pts impracticable.

Land mountainous

Soil gravelly, bad water

Under, pale rocks, undergrowth  
grassland, pale rocks, trees and  
cacti

Mountainous land or land covered  
with dense undergrowth, 45.00 chs.

N. 0<sup>o</sup> 2' W. bet. sec 9 and 10  
From cor. point in wash

Recreation, S 47, N 76 - continued

- Over mountainous land  
 ascending through dense undergrowth
- 10.40 Top of ridge, Cross N. Westerly and  
 S. Easterly, and descend
- 17.40 Middle of deep gulch 3 lbs wide, &  
 descend
- 19.30 descend
- 21.30 Top
- 40.50 Descend.
- Set a sandstone 18 x 10 x 6 ins, 12 ins in  
 the ground, for  $\frac{1}{4}$  sec. w., marked  
 $\frac{1}{4}$  9 on W and 10 on E faces, and  
 raise a mound of stone 2 ft base,  $1\frac{1}{2}$   
 ft high, W. of w. Very impracticable.
- 45.10 Port. dry wash 10 lbs wide, Cross  
 Westerly, and ascend
- 52.10 Top of ridge, Cross E. and W.
- 63.00 Descend
- 65.50 Port. dry wash 20 lbs wide, Cross  
 Westerly, and ascend

Subdivision of Ft. McDowell Military  
Chassis

75.00 Robt. and descend

8.000 Robt.

Set a sandstone 18x12x8 ins, 10 ins in  
the ground, for the use of secs 3, 4,  
9 and 10, marked with 5 notches on  
S. and 3 notches on E. edges, from  
which a pale, Packer 6 ins diam, bore  
N 25° E, 35 lbs dist, marked P 4 N,  
R 7 E, S 3 B D.

A pale Packer 6 ins diam, bore S 27° E,  
34 lbs dist, marked P 4 N, R 7 E,  
S 10 B D.

A mesquite 6 ins diam, bore S 1° W,  
39 lbs dist, marked P 4 N, R 7 E,  
S 9 B D.

A mesquite 6 ins diam, bore N 73° W,  
39 lbs dist, marked P 4 N, R 7 E,  
S 4 B D.

Land, mountainous.

Reservation, P 47, R 7 E - continued

chain

Soil, gravelly and stony 3rd and 4' strata.

Timber, pale firs and magnolia, undergrowth, grasswood, pale firs, tapers and cacti

Prickly cactus.

Mountainous land or land covered with dense undergrowth, 8000 ft.

East, on a true line bet 5000 3 and 10 Over mountainous land

Ascending over broken slopes of ridge through dense undergrowth

- 1.00 Gulch, 20 lbs wide, course N. W.
- 3.50 Gulch 20 lbs wide, course N. W.
- 5.00 Gulch 40 lbs wide, course N. W.
- 7.10 Gulch 15 lbs wide, course N. W.
- 9.00 Gulch 20 lbs wide, course S. W.
- 12.50 Top of ridge, bears Northwily and

Subdivision of Ft McDowell Military  
 Chain

- 22.00 Slightly and descend  
 22.00 Begin steep descent  
 23.50 Port, dry wash 10 lbs wide, Course S.  
 W. to W. and ascend  
 24.00 Top, and descend  
 25.00 Port, dry wash 10 lbs wide, Course S.  
 W. to W. and ascend  
 27.00 Top, and descend  
 27.50 Set a malpais stone 18 x 12 x 8 ins, 12  
 ins in the ground for witness cor  
 to  $\frac{1}{4}$  sec cor, marked N of  $\frac{1}{4}$  3 cor  
 N and 10 cor S. found, and raise a  
 mound of stone 2 ft base, 1 1/2 ft  
 high, N of cor. Pits impracticable.  
 29.00 Banks of canyon  
 32.75 The closing cor falling in canyon, &  
 establish at this point witness cor  
 to closing cor of final secs 3 and 10,  
 by setting a malpais stone 18 x 10 x 8

Reservation, A 47, 1678 - continued

Chain

12 ins in the ground marked W.C.  
C. 1, Pt M on W, P L on E, 3 on N  
and 10 on S. faces, and raise a mound  
of stone 3 ft base, 2 ft high, W of cor.  
Pits impracticable.

Note: The line from this point  
runs over canyon impracticable to  
chain or establish base line for  
triangulation. I therefore obtain the  
distance by a stadia measurements  
of 600 and 839.46 ft respectively,  
making the intersection.

54.56 In tract E bay of the Pt McDonald  
Military reservation at a point from  
which the <sup>W.C. to</sup> 4 1/2 mile cor. of the bay,  
as heretofore described, bears S 6 3/4° W,  
50 lbs dist.

Land, mountainous

Soil, gravelly; 3rd rate

Subdivision of Pt McDowell Military  
 Chain

No timber, undergrowth grasswood,  
 sycle trees, sugar and cacti.  
 Giant cactus

Mountainous land or land covered  
 with dense undergrowth, 54.56 chs.

7.02 <sup>on a true line</sup> N. 0° 2' W. bet sees 3 and 4

Over mountainous land

Ascending through dense undergrowth

.25 Dry wash 30 lbs rock, bears S 55° W

5.20 Pop, and descend

10.50 Part dry wash 30 lbs rock, carries  
 S. Westerly

11.00 Begin descent S. W. slope of ridge

24.00 Pop, bears Easterly and Westerly

24.53 Put over at N. end of the Pt McDowell  
 Military Reservation at a point  
 from which the S. side <sup>S</sup> of  
 the reservation <sup>S</sup> by bears N. 80° 17' W.



Reservation, P 4 N, R 7 E - Continued

Chinle

20.00 lbs dist

Set a malpais stone 24 x 16 x 10 ins  
16 ins in the ground for closing up  
of fault crees 3 and 4 marked  
C.C., Pt M<sup>W</sup> on S, P<sup>L</sup> on N, 3 on E,  
and 4, on W faces, from which a  
pale & red 6 ins diam. bears S 39° E,  
134 lbs dist, marked P 4 N, R 7 E,  
S 3 B D.

A pale Pink 8 ins diam. bears S 28° W,  
162 lbs dist, marked P 4 N, R 7 E  
S 4 B D.

Land, mountainous

Soil, generally sand & stony. 3rd and  
4<sup>th</sup> water.

Timber, pale Pines, juniper, with  
grasswood, pale Pines, brush and cacti.  
Siant cactus

Mountainous land or land covered

Subdivision of St. McDowell Military  
Chain

with dense undergrowth, 24.53 P.M.

February 9, 1902.

February 10, 1902. At 5<sup>h</sup> 20<sup>m</sup> a.m. left  
Port off 33° 38' on the lat arc; 14° 00' S,  
on the decl arc, and determine a true  
meridian with the solar at the ear of  
screes 4, 5, 32 and 33, on the S. side of the  
Phaner Dome.

N. 0° 2' W. lat. screes 32 and 36  
Over level land.

Through dense undergrowth.

7.25 Descend

9.00 Feet, and enter drain, corner S. Westery

11.00 Dry wash 30 lbs wide, corner S. Westery

12.30 Round

14.50 Top, bare dense undergrowth, corner N.

Easterly and S. Westery, and enter meadow

24.50 Old road, corner N. E. and S. W.

## Resurrection, 1877, 1878 - Continued

Chinle

39.72

Road, from Pt. McNeill to Lynam's  
Canyon and Simpson Valley,  $\frac{1}{2}$  easterly  
and  $\frac{1}{2}$  westerly.

40.00

Set a sandstone 18x8x8 ins, 12 ins in  
the ground for  $\frac{1}{4}$  sec. cor, marked  
 $\frac{1}{4}$  82 on N. and 93 on E. face, from  
which a magnetic 6 ins diam, base  
N  $33\frac{1}{2}^{\circ}$  E, 211 lbs. dist, marked  $\frac{1}{4}$  S 33  
N S.A magnetic 12 ins diam base S  $87\frac{1}{2}^{\circ}$  E  
200 lbs. dist, marked  $\frac{1}{4}$  S 33, N S.  
and center down reaching to base  
N. Easterly and S. Westerly

47.00

Grass mesa, turned over rolling  
broken land.

70.75

Dry wash 16 lbs. wide, course N. Easterly

77.50

Middle of draw, 3 lbs. wide, course N. Westerly

80.00

Set a malpais stone 18x10x4 ins, 12 ins  
in the ground, for the cor. of sec.

Subdivision of St McDowell Military  
 Claims

25, 29, 32 and 33, marked with 1 notch  
 on A and 4 notches on B. edges, from  
 which a pale 7 rods 8 ins diam, bears  
 N  $15\frac{1}{4}^{\circ}$  E, 229 lbs dist, marked P 47,  
 R 48, S 25, B D.

A pale 7 rods 8 ins diam, bears S  $23\frac{1}{2}^{\circ}$  W,  
 274 lbs dist, marked P 47, R 48, S 22, B D.

A mesquite 8 ins diam, bears S  $31\frac{1}{4}^{\circ}$  E,  
 marked P 47, R 48, S 33, B D.

A pale 7 rods 8 ins diam, bears N  $18\frac{1}{4}^{\circ}$  W,  
 178 lbs dist, marked P 47, R 48, S 29, B D.

Land level, rolling and broken.

Soil sandy and gravelly; sand and gravel  
 beds.

Timber, mesquite and pale 7 rods;  
 underground, muskrat, beaver, sugar  
 and cane.

Print Coates

Drum underground, 55.00 lbs

## Observation, P 47. 1678 - continued

Chassis

- Quartz on a random line bet sees 28 and 33.  
 4.00 Set temp  $\frac{1}{2}$  see cor.  
 8.00 Intersect N. and S. at the cor. of sees  
 27, 28, 33 and 34.

Phnee Tunnel

West on a true line bet sees 28 and 33.

Overland Tunnel.

Through grass undergrowth.

- 2.30 Road, cross N. Easterly and S. Westerly  
 4.10 Rocky gulch 15 lbs under corner  
 Southly and around S.E. slope of ridge  
 22.80 Pop, cross N. Easterly and S. Westerly  
 23.10 Begin descent of N.W. slope.  
 37.60 Set a granite stone 18 x 16 ins, 12 ins in  
 the ground, for witness cor to  $\frac{1}{2}$  see cor,  
 marked N  $\frac{1}{4}$  E 28 on N, and 33 on S.  
 face; from which a pale 7' dia 8 in  
 diam, cross N  $39^{\circ}$  E, 28 lbs dist, marked  
 N  $\frac{1}{4}$  S. 28, B.P.

Subdivision of Ft McDowell Military

Chains

- 40.05 Spade fence line drawn, Grand P.O. N.,  
49. The dist, marked N  $4\frac{1}{2}$  S. 33, 13 B.
- 40.05 The point for  $\frac{1}{2}$  sec cor falls in dry wash  
10 lbs iron gunner N. Westoby
- 50.10 Foot of descent, and enter draw, corner  
N. Westoby
- 66.10 Come down and ascend
- 67.10 Top of ascent
- 68.10 Descent
- 70.10 Foot, and enter draw, corner N. Westoby
- 80.10 The cor of sec 28, 29, 30 and 33.  
Land, mountainous and level.  
Soil, gravelly and stony; end, end and  
H<sup>2</sup> water.  
Timber, pale Pines, mixed with mes-  
quite grasswood, tortal and cacti.  
Giant Cactus.  
Mountainous land or land covered with  
dense undergrowth, 80.10 ch.

Reservation, P 47, B 78 - continued

Claims

N. 0° 2' N. lat, sec 28 and 29.

Over getting land.

Through your underground.

20 Dry wash 25 lbs wide, corner Westly

8.90 Dry wash 10 lbs wide, corner Westly

23.00 Descend

24.50 Dry wash 40 lbs wide, corner Westly,  
and enter draw, corner Westly

30.00 Leave draw and ascend

33.50 Pop, and descend

34.00 Port, and enter draw, corner Westly

35.00 Dry wash, 30 lbs wide, corner Westly

40.00 Set a royal pair stone 18 x 8 x 6 ins, 121 ins  
in the ground, for  $\frac{1}{4}$  sec cor, marked  
 $\frac{1}{4}$  29 on N and 28 on E face, from which  
a meqrute 6 ins diam, line S 68 $\frac{1}{4}$ ° E,  
145 lbs dist marked  $\frac{1}{4}$  S. 28, B. S.  
A meqrute 10 ins diam, line N 25° W,  
203 lbs dist marked  $\frac{1}{4}$  S. 29, B. S.

## Subdivision of St. McDowell Military

Chairs

- 43.00 Camp drawn and ascend over rolling land
- 53.00 Descend from mesa
- 56.50 Port, dry wash 20 lbs water, corner Westly
- 58.00 Ascend
- 60.00 Top of ridge, from Easterly and Westly,  
and descend
- 63.90 Port, dry wash 20 lbs water, corner Westly
- 64.00 Ascend
- 68.50 Top of ridge, from N. Westly and S.  
Easterly, and descend
- 71.20 Port, and extra drawn, corner Westly
- 72.60 Dry wash 90 lbs water, corner S. Westly
- 78.00 Camp drawn, and ascend
- 78.50 Top, and descend
- 80.00 Set a malpais stone 18x8x8 ins, 12 ins  
in the ground, for the cor of ores 20,  
21, & 22 and 29, marked with 2 notches  
on S and 4 notches on E edge, from  
which a plate 9 wide 7 ins drawn



## Resurrection, P 47, R 76 - Continued

Charris

Tree 7 75 1/4° E, 84 lbs dist, marked  
P 47, R 76, S 21, B B.

A pale Pycis 8 ins diam, base S 74° E,  
122 lbs dist, marked, P 47, R 76,  
S 25, B B.

A pale Pycis 6 ins diam, base S 82 3/4° W,  
154 lbs dist, marked P 47, R 76, S  
29, B B.

A pale Pycis 7 ins diam, base N 79 3/4° W,  
136 lbs dist, marked P 47, R 76,  
S 20, B B.

Land, rolling and level

Soil, gravelly, soil water.

Pinus, pale Pycis, undergrowth,

Juncus, pale Pycis, sugar and

Cacti.

Great Cactus

Dense undergrowth, 8000 chi'

February 10, 1900.

Subdivision of P. T. McDowell Military  
 Column

- East on a random line bet sees 21  
 and 25.
- 4.00 Set trap  $\frac{1}{2}$  see 21.
- 8.00 Intersect N. and S line at the cor  
 of sees 21, 22, 27 and 28.
- Planes P run  
 West on a true line bet sees 21 and 28.
- Overrolling lands.  
 Ascending through dense fields woods
- 3.50 Top of ascent,
- 5.00 Descent
- 7.05 Port, and ascend
- 9.30 Top and descent
- 10.50 Port, and enter draw, course S. Westly
- 11.70 Dry wash, to the side, course S. Westly
- 16.00 Draw draw, and ascend
- 18.00 Top
- 20.00 Descent
- 24.00 Port, and enter draw, course Westly

## Prospect, S 4 N, R 7 E, Contonid

6 hours

33.50 Dry wash, 10 lbs mica, yellow S. 100° E

38.55 Bare drain, und. as sand

40.01 Set a sandstone 18x7x5 ins, 12 ins in  
the ground for  $\frac{1}{4}$  ore coal marked  
42, on N, and 28 on S face, from  
which a pale Verde 8 ins diam, bears  
N. 24° E, 86 lbs dist, marked  $\frac{1}{4}$  S 4,  
B P.

A pale Verde 8 ins diam, bears S 66° E,  
77 lbs dist, marked  $\frac{1}{4}$  S 28, B P.

40.15 Top, thin over broken and rolling  
ground.

50.00 Fly on of ores 20, 21, 28 and 29.

Ground broken and rolling  
Soil, gravelly and thin, red, and  
4" water.

Timber, pale Verde and mesquite,  
undergrowth, grass, wood, tract, pale  
Verde, mesquite, and cacti.

Subdivision of St. McDowell Military  
Claims

Trant cactus

Dense undergrowth, 8000 chs.

N. 0.2 N. lat, sec 20 and 21.

Over rolling land

Descending

Plough dense grassward and cacti

- |       |   |
|-------|---|
| 60    | Foot, and ascend.                                 |
| 2.00  | Top of ridge, and descend                         |
| 6.00  | Foot, and enter flat                              |
| 12.00 | Dry wash, 60 lbs wide, corner S. W. 20th          |
| 18.00 | Dense flat and ascend.                            |
| 21.00 | Top, and descend                                  |
| 28.00 | Foot, and enter flat                              |
| 28.60 | Dry wash, 40 lbs wide, corner S. W. 20th          |
| 31.00 | Dense flat, and ascend                            |
| 33.50 | Top, and descend                                  |
| 35.00 | Foot dry wash, 50 lbs wide, corner<br>S. W. 20th. |

## Preservation, P 47, B 78 - continued

Chains

47.00

Set a malpais stone 18x6x5 ins, 12 ins in the ground for  $\frac{1}{4}$  sec cor, marked  $\frac{1}{4}$  20 on N. and 21 on E. face, from which a mesquite 8 ins diam, bears S 89 $\frac{1}{2}$ ° E 94 lbs dist, marked  $\frac{1}{4}$  S 21, B 1.

A mesquite 12 ins diam, bears 78 $\frac{1}{2}$ ° N, 230 lbs dist marked  $\frac{1}{4}$  S 20, B 1.

48.00 Board

49.00 Post, and descend

50.00 Post, and enter flat

51.00 Dig wash, 40 lbs net, corner Westly

52.00 Leave flat and ascend

53.00 Copy sterner over broken mesa

54.00 Descend from mesa

55.00 Post.

56.00 Set a sandstone 18x6x6 ins, 12 ins in the ground, for the cor of secs 16, 17, 20 and 21, marked with 3 notches on

## Subdivision of Pt. McDowell Military

Chains

Land 4 notches on E. ~~edges~~ <sup>edges</sup> from  
 which a mesquite 8 ins diam, bears  
 N. 60 $\frac{1}{4}$ ° E. 254 lbs dist, marked P 4 N,  
 R 7 E, S 16, B 1.

A pale & red 8 ins diam, bears S 15° E,  
 148 lbs dist, marked P 4 N, R 7 E,  
 S 21, B 1.

A mesquite 12 ins diam, bears S 85 $\frac{3}{4}$ ° W,  
 82 lbs dist, marked P 4 N, R 7 E  
 S 20 B 1.

A mesquite 8 ins diam, bears N 81 $\frac{1}{4}$ ° W,  
 334 lbs dist, marked P 4 N, R 7 E, S 17,  
 B 1.

Land, rolling, mountainous and level.

Soil, gravelly and thin, 3rd and 4<sup>th</sup> rate.

Plants, pale reds and mesquite, un-  
 dergrowth, mesquite, locust, grasses and  
 wild cacti

Plant cactus.

Reservation, P 4 N, R 7 E - Continued

hans  
 Mountainous land or land exposed with  
 dense undergrowth, 8,000 lbs

East on a random line bet secs 16 and 21.

4,000 Sat temp  $\frac{1}{2}$  sec cor.

8,000 Intersect N. and S. line, 3 lbs S. of  
 top of secs 15, 16, 21 and 22.

Phaner Penn.

S 89° 59' W, on a true line bet secs  
 16 and 21.

Over broken land

Descending, through dense undergrowth.

9.00 Part

1.00 Dry wash, 10 lbs wide, course S. W. to N. E.

14.80 Same wash, 30 lbs wide, course N. W.

16.50 Same wash, 30 lbs wide, course S. W.

18.70 Same wash, 30 lbs wide, course N. W.

29.70 Dry wash, 25 lbs wide, course N. to S.

40.00 Set a malpais stone 18 x 8 x 6 ins, 12 ins

Subdivision of Ft McDowell Military  
Chain

- in the ground, for  $\frac{1}{2}$  acre ev, marked  
416 on N. and 21 on S. face, dig  
into 18x18x12 in E. and W. of stone, 3  
ft dit. and raise a pyramid of earth,  
3 $\frac{1}{2}$  ft base, 1 $\frac{1}{2}$  ft high, N. of ev.
- 40.80 Descend
- 41.00 Foot gulch 20 lbs wide, corner S.  
Westerly, and ascend
- 42.00 Top and descend
- 46.00 Foot gulch 10 lbs wide, corner S.  
Westerly, and ascend
- 47.00 Top and descend
- 49.00 Foot
- 49.50 Gulch 15 lbs wide, corner S. Westerly  
and ascend
- 51.00 Top, and descend
- 54.00 Foot
- 55.50 Gulch 30 lbs wide, corner N. Westerly  
and ascend



Reservations, P 49, 1678 - Cantonina

Chains

- 57.00 Top, and descend
- 59.00 Foot, gulch to the side, corner S.  
Proterty and ascend
- 61.00 Top Land, descend
- 68.00 Foot
- 70.00 Enter dry wash, corner N. Proterty
- 75.00 Drain wash
- 80.00 The cor of ores 16, 17, 20 and 21.  
Land, mountainous and broken  
Soil, gravelly, good water,  
Pines, pine, Pines and pines,  
undergrowth, grasswood, sage and  
cacti.  
Sunt cactus.  
Mountainous land or land covered  
with dense undergrowth, 8.00 chas.
- 
- N. 0° 21' W, bet ores 16 and 17  
Over level land.

Subdivision of Pt McDermott Meliary

6 hours

1.00

Dry wash, 40 lbs wide, course S. Westerly, and ascend

5.00

Box of ascent, course N. Easterly and S. Westerly, and ascend

1.00

Port.

10.00

Inch, 40 lbs wide, course S. Westerly, and ascend

13.00

Box and descend

18.00

Port and entry down, course N. Westerly

19.70

Dry wash, 10 lbs wide, course N. Westerly

26.00

Dry wash, 40 lbs wide, course N. Westerly

32.00

Crane, draw and ascend

4.00

Set a malpais stone 18x10x8 ins, 12 ins in the ground, for  $\frac{1}{4}$  sec cor.

marked  $\frac{1}{4}$  17 on N. and 16 on E face, from which a pale 4 ins diam, bore S  $84\frac{1}{2}^{\circ}$  E, 68 lbs dist, marked  $\frac{1}{4}$  S 16, B.S.

A pale 4 ins diam, bore N.  $82^{\circ}$  W,

Preservation, S 47, R 7 E - Continued

Blinn

see the dist, marked S 17, R 8.

42.00 Pop

46.50 Descend

47.00 Set of which 10 lbs mid, corner S. Westly  
and ascend

51.00 Pop and descend

56.00 Set, and enter draw, corner S. Westly

56.70 Dry wash 30 lbs mid, corner Westly

62.00 Dry wash 40 lbs mid, corner Westly

69.80 Dry wash 60 lbs mid, corner S. Westly

76.00 Dry wash 80 lbs mid, corner S. Westly  
and bring down and ascend

77.00 Pop

8.00 Set a sundstone 15 x 12 x 6 in, 12 in in  
the ground, for the use of ores S, 7,  
16 and 17, marked with 4 notches  
on S and E edges, from which a  
false decl 10 lbs diam, bears  $73^{\circ} 34' E$ ,  
68 lbs dist, marked S 47, R 7 E, S 9, R 8.

## Subdivision of St McDowell Military

Chains

A pale stake 8 ins diam, base S. 55° E,  
127 lbs dist, marked S 4 N. R 7 E,  
S 16, B S.

A pale stake 10 ins diam, base S. 66° W,  
177 lbs dist, marked S 4 N. R 7 E,  
S 17, B S.

A pale stake 12 ins diam, base  
N 54° W, 110 lbs dist, marked S 4 N,  
R 7 E, S 8, B S.

Land, mountains and level.

Soil, gravelly, and sand and rock water.  
Pines, pine trees, undergrowth, pale  
Pines, grasswood, tobacco and cacti.  
Sunt cacti.

Mountains land, 46.00 lbs.

February 11, 1902.

N 89° 59' E, on a random line bet  
uses 9 and 16.

## Reservation, P47, R78 - Cuntward

Chain

- 4.00 Set trap 4 acc ord.
- 8.00 Intersect N. and S. line 8 lbs N. of the  
cor of aces 9, 10, 15 and 16.
- Shiner Dam
- Wet, on a turn line bet aces 9 and 16.
- Over mountains land.
- Through dense grasswood and sage.
- (From wet point in wash.)
- 2.00 Cross wash
- 4.00 Cross draw, and ascend
- 4.50 Top, and descend
- 6.00 Top, and enter draw, curve S. Westly.
- 8.60 Cross draw, and ascend
- 11.50 Top, and descend along E. slope of ridge
- 14.10 Top, and ascend
- 20.00 Top of spur and descend
- 25.00 Top, and ascend N. slope
- 38.00 Top of ridge, cross N. Westly and S.  
Eastly, and descend

# Subdivision of St McDowell Military

Chain

4000

Foot.

Set a malpais stone 15x10x8 ins, 10 ins  
in the ground, for  $\frac{1}{4}$  sec cor, marked  
 $\frac{1}{4}$  9 on N and 16 on E face, from which  
a pale & dark 8 ins chain, true S  $88^{\circ} 4' E$ ,  
36 lbs dist, marked  $\frac{1}{4}$  S 16 B S.

A magnet 16 ins chain, true N  $190^{\circ} W$ ,  
59 lbs dist, marked  $\frac{1}{4}$  S 9 B S.

48.00 Dry wash, 40 lbs mick, corner S  
Westerly, and ascend

44.00 Top, and descend

46.00 Port, and enter drain, corner Westerly.

50.00 Draw drain and ascend

57.30 Top, and descend

58.00 Port, and enter drain, corner Westerly

61.00 Dry wash, 20 lbs mick, corner S. Westerly

64.00 Sun wash, 20 lbs mick, corner N. Westerly

7.00 Draw drain, and ascend

8.00 The cor of pres 8, 9, 16 and 17.

## Observation P 4 N R 7 E - continued

Chains

Land, mountainous and level.  
Soil, sandy and gravelly; and and Soil  
rate.

Timber, mesquite, and palo Verde; under-  
growth, grasses, mesquite, brush, sage  
and Cacti.

Grass Cactus.

Mountainous land or land, covered  
with dense undergrowth, 5000 lbs.

N. 0° E N, bet over 8 and 9  
Over mountainous land.

Through dense undergrowth  
Descending

- 1000 Feet gulch 30 lbs wide, course Westerly  
10.70 Begin ascent of ridge  
2000 Feet, from Easterly and Westerly and  
descend  
21.70 Feet gulch 30 lbs wide, course Westerly

Subdivision of St. McDowell Military  
 Chassis

- 27.50 Ascend
- 29.30 Top, and descend
- 32.40 Foot gulch 30 lbs wide, course N. Westerly
- 35.80 Ascend N. slope of ridge
- 38.00 Top, from E. and N. and descend
- 39.20 Foot, Dry wash 30 lbs wide, course S. Easterly
- 39.50 Ascend
- 41.50 Set a sandstone 20 x 10 x 8 ins, 14 ins in the ground, feet  $\frac{1}{4}$  are east, marked  $\frac{1}{4}$  on N. and 9 on E. face, from which a magnetic 3 ins chain, from S  $110^{\circ}$  E, 110 lbs dist, marked  $\frac{1}{4}$  S 9. B. P. A pale sand 4 ins chain, from S  $60^{\circ}$  W, 50 lbs dist, marked  $\frac{1}{4}$  S 8. B. P.
- 43.00 Top of ridge, from Easterly and Westerly and descend
- 54.00 Foot gulch, 30 lbs wide, course N. Westerly, and ascend



## Broomfield, S 4 N. 16 7 8 - continued

Chains

- 56.00 Top and descend
- 59.00 Foot, and enter draw, corner N. W. truly
- 61.80 Dry wash 26 lbs wide, corner N. W. truly
- 65.00 Draw draw and ascend S slope of ridge
- 67.50 Top and descend
- 71.00 Foot gulch, 10 lbs wide, corner N. W. truly
- 71.50 Ascend N slope of ridge
- 73.00 Top of slope, base N. W. truly and descend
- 75.00 Foot, and enter draw, corner S. W. truly
- 78.00 Dry wash, 1.50 lbs wide, corner S. W. truly
- 80.00 Set a malpais stone 24 x 12 x 8 ins, 12 ins in the ground, for the eye of corner 4, 5, 8 and 9, marked with 5 notches on S and 4 notches on E. edge, from which a pale runs 10 ins

Subdivision of Pt McDunnell Military  
Chemin

drum, base  $N 57\frac{1}{2}^{\circ} E$ , 118 lbs dist,  
marked S 47, R 7 E, S 4, B S.

A tortoise ins drum, base  $S 40^{\circ} E$ , 45  
lbs dist, marked S 47, R 7 E, S 3, B S.

A pale brick 8 ins diam, base  $S 7\frac{1}{2}^{\circ} W$ ,  
76 lbs dist, marked S 47, R 7 E, S 8  
B S.

A iron nail 24 ins diam base  $N 61^{\circ} W$   
7 lbs dist, marked S 47, R 7 E, S 5  
B S.

Land, mountainous

Soil, gravelly and stony; but and  
4<sup>th</sup> rats.

Timber, pale wood, ironwood and  
mesquite; undergrowth, pale brush,  
mesquite, grasswood and cacti.  
Giant cactus.

Mountainous land or land covered  
with dense undergrowth, 8000 lbs.

## Reservations, P 4 N, 16 7 B - Custerville

- Chassis  
 East on a random line bet acres 4  
 and 9.
- 41.00 bet temp 4 acre 10
- 50.04 Intersect N. and S line at the cor  
 of acres 3, 4, 9 and 10.
- Flower Farm  
 West on a true line bet acres 4 and 9  
 Over rolling land  
 through dense mid growth
- .50 Dry wash 40 lbs wide, course S.  
 W. to truly and across
- 1.50 Sap and across
- 3.00 Foot gulch 20 wide, course S. to truly
- 5.00 Gulch 15 lbs wide, course S. to truly
- 9.00 Gulch 1 ch wide, course S. to truly
- 12.00 Gulch 20 lbs wide, course S. to truly
- 20.00 Along S. slope of ridge
- 22.00 Dry wash 10 lbs wide, course S. to truly
- 22.70 Same wash, 10 lbs wide, course N. to truly

Subdivision of St. McDowell Military  
 Chain

23.40 Set a gulch 10 lbs wide, corner S. Westly

24.00 Ascend

28.00 Top, and descend

40.00 Set a malpais stone 24 x 14 x 10 ins, 16  
 ins in the ground, for  $\frac{1}{4}$  sec cor,  
 marked  $\frac{1}{4}$  4 on N. and 9 on S. face,  
 and raise a mound of stone 2 ft  
 base, 1 1/2 ft high,  $\frac{1}{4}$  of cor. Pit  
 unproductive

41.50 Set a gulch 20 lbs wide, corner S.  
 and ascend

47.00 Top

58.00 Descend

62.00 Set, and enter dry wash, corner  
 Westly

76.40 Leave wash, corner S. Westly

80.04 The cor of sec 4, 5, 8 and 9.

Land, rolling and level

Soil, sandy and gravelly, and incl

## Reservation S 4 N. R 7 E - continued

bluffs

Soil water.

Timber, pale Pines, undergrowth, pale  
Pines, grasswood, brata and acahi  
Sunt cactus.

Dense undergrowth 5.04 ch.

N. of N. on a line 1 mi. to sec 4  
and 5.

Over mountains land

Through dense grasswood

1.00 Grass wood and acahi

3.00 Popl, and dwarf

4.20 Post, gulch 10 the side, corner S.  
Pine, and acahi

8.50 Post of ridge, Grass Cactus and  
Pine, and dwarf

10.70 Intersect N. by of the N. W. corner  
Military Reservation at a point  
from which the 2 mile cor. line

Subsidence Pt McDowell Mill Res Pt 7. B78-continued  
 Column

S 80° 17' W 24.20 ch. dist.

Set a well-bore stem 18 x 20 x 10 ins, 12  
 ins in the ground, for closing in of  
 gravel coal # 4 and 5 marked C. C.  
 Pt McDowell, P. L. on N, 4 on E and  
 5 on W faces and raise a number  
 of stems 3 ft base, 2 ft high, S of  
 cor. Pits impracticable.

Ground, mountainous.

Soil, gravelly, red later.

No timber, undergrowth, grasses, *magnolia*, *vacc* and *cacti*.

Mountainous land or land covered  
 with dense undergrowth 10.70 ch.

February 12, 1902.

February 13, 1902. At 5<sup>h</sup> 20<sup>min</sup> a.m.,  
 left Port off 35° 55' on the lat arc;  
 13° 50' S. on the decl arc, and determine

Continued. Books 1786 and 1787.  
Concluded. Book 1788.

61

Territory of Arizona  
Pima Co } s. s

Personally appeared before me, Clinton D. Hoover, clerk of the District Court of the First Judicial District of the Territory of Arizona, Philip Cautzer, who being first duly sworn deposes and says:

that he is the identical Philip Cautzer who acted as compassman for James Hantee, W.D. Surveyor in the execution of surveys under Contract #1076, dated June 19<sup>th</sup> 1906.

Further says that he accompanied Examiner

Frank Warner during the recent examination of the Exterior of the Fort Mc Dowell Military Reservation and he found:

that the M. Corner on 9<sup>th</sup> Mile on the S. bank of the Sycamore wash is at 80 lks. instead of 70 lks. from 9 Mile Cor. pt.

The distance to witness tree which bears  $N64\frac{3}{4}^{\circ}E$  is 21 lks instead of 184 lks (at W.C. for 9 Mile Cor)

The distance to witness tree which bears  $S3\frac{1}{2}^{\circ}E$  is 184 lks, instead of 21 lks (at W.C. for 9 Mile Cor)

The Meander Cor. on 3<sup>rd</sup> Mile on the Right bank of Verde River is at 20 lks instead of 10 lks from 2<sup>nd</sup> Mile Cor.

The witness cor. to the 4<sup>th</sup> Mile Cor. is at 2.15 chs instead of 0.75 chs from the 4<sup>th</sup> Mile Cor. pt.

Further says that said differences are only of a clerical nature, which were caused in writing up the official field notes

Philip Cautzer  
Compassman under Contract #1076

Subscribed and sworn to before me this 6<sup>th</sup>  
day of April 1903.

Clinton D. Hoover,  
Clerk District Court,  
First District of Arizona