

Book 4-679

Cop. G. V. July 20/05

1904  
1905  
1906  
1907  
1908  
1909  
1910  
1911  
1912  
1913  
1914  
1915  
1916  
1917  
1918  
1919  
1920  
1921  
1922  
1923  
1924  
1925  
1926  
1927  
1928  
1929  
1930  
1931  
1932  
1933  
1934  
1935  
1936  
1937  
1938  
1939  
1940  
1941  
1942  
1943  
1944  
1945  
1946  
1947  
1948  
1949  
1950  
1951  
1952  
1953  
1954  
1955  
1956  
1957  
1958  
1959  
1960  
1961  
1962  
1963  
1964  
1965  
1966  
1967  
1968  
1969  
1970  
1971  
1972  
1973  
1974  
1975  
1976  
1977  
1978  
1979  
1980  
1981  
1982  
1983  
1984  
1985  
1986  
1987  
1988  
1989  
1990  
1991  
1992  
1993  
1994  
1995  
1996  
1997  
1998  
1999  
2000  
2001  
2002  
2003  
2004  
2005  
2006  
2007  
2008  
2009  
2010  
2011  
2012  
2013  
2014  
2015  
2016  
2017  
2018  
2019  
2020  
2021  
2022  
2023  
2024  
2025

-1821-

# FIELD NOTES

OF THE SURVEY OF THE

BOOK 1821

See p 14

Subdivision Lines  
of  
S 18 N, R 5 E.  
and  
Resurvey  
Two Miles of S B dy.

-1821-

along the main Salt River Basin and Meridian,  
in the Country of Arizona.

AS SURVEYED BY

L. Districh, United States Deputy Surveyor

123 dated September 15, 1904

March 6, 1905

April 3, 1905

NAMES AND DUTIES OF ASSISTANTS.

John M. Boyer, chairman  
 William A. Morris, chairman  
 Charles Pugin, Murdockman  
 William R. Ward, axman  
 Ira Ormsby, axman  
 Fred E. Wilhel, flagman

BOOK 1821  
INDEX DIAGRAM.

Township 18 N., Range 5 E.

6	5	42	4	34	3	25	2	17	1	
			41		33		25		16	
7	8	40	9	32	10	24	11	15	12	
52	51		40		31		23		14	
18	50	17	39	16	30	15	22	14	13	
49		18		38	30		21		12	
19	117	20	37	21	28	22	20	23	11	24
46		115		37	28		19		10	
20	44	29	36	28	27	18	26	9	25	
9		6	X		X		3		9	
31	43	32	35	33	26	34	18	35	9	30

Meanders Page.....

PRELIMINARY OATHS OF ASSISTANTS.

BOOK 1821

WE, John M. Gray and William A. Morris  
do solemnly swear that we will well and faithfully execute the duties of chainmen; that we will level the chain upon even and uneven ground, and plumb the tally pins, either by sticking or dropping the same; that we will report the true distances to all notable objects, and the true lengths of all lines that we assist in measuring, to the best of our skill and ability, and in accordance with instructions given us, in the survey of

the subdivision lines of S. 18 7, R. 5 E.

John M. Gray, Chainman.  
W. A. Morris, Chainman.

Subscribed and sworn to before me this Sixth  
day of March, 1905



WE, Charles Pogue and

do solemnly swear that we will well and truly perform the duties of moundmen in the establishment of corners, according to the instructions given us, to the best of our skill and ability, in the survey of

the subdivision lines of S. 18 7, R. 5 E.

Edgar C. Dietrich, Moundman.  
Charles Pogue, Moundman.

Subscribed and sworn to before me this Sixth  
day of March, 1905



WE, William M. Ware and

do solemnly swear that we will well and truly perform the duties of axmen in the establishment of corners and other duties, according to instructions given us, to the best of our skill and ability, in the survey of

the subdivision lines of S. 18 7, R. 5 E.

Edgar C. Dietrich, Axman.  
William M. Ware, Axman.  
Ira Owenby, Axman.

Subscribed and sworn to before me this Sixth  
day of March, 1905



I, Fred E. Miller, do solemnly swear that I will well and truly perform the duties of flagman according to instructions given me, to the best of my skill and ability, in the survey of

the subdivision lines of S. 18 7, R. 5 E.

Fred E. Miller, Flagman.

Subscribed and sworn to before me this Sixth  
day of March, 1905



Edgar C. Dietrich  
U.S. Deputy Surveyor

No notary public available



Journal

Preliminary to commencing the subdivision of the Sp. I, in compliance with my instructions, I proceeded to establish a sectional correction line, using the certain portions of the S. E. bay of the Sp. being out in measurement. Survey commenced March 6, 1905, and extended with a Jones N. Quinn and Co's light mountain transit, No. 4607, with solar attachment. The horizontal limb is provided with fine double verniers placed opposite to each other, reading to single minutes of arc, which is also the least count of the verniers of the latitude and declination arcs. *The latitude arc reads 3' in excess being an index error*

The instrument was examined, tested in the town meridional at Phoenix, found correct, and was approved by the surveyor general for Arizona, December 22, 1904.

I examined the adjustments of the transit, and correct the level and collimation errors; then, to test the solar apparatus, by comparing its indications, resulting from solar observations made during a.m. and p.m. hours, with a meridian determined by observations on Polaris, I proceeded as follows:

At the end of Secs. 25, 30, 31 and 36, on the E. bay of the Sp., as heretofore described, latitude  $34^{\circ} 52' N.$ , longitude  $111^{\circ} 46' W.$ ; I set off  $34^{\circ} 52' N.$ , on the lat. arc,  $5^{\circ} 25'$  S. on the decl. arc; and, at  $4^h 11^m$  p.m. l.m.t., determined with the solar a meridian and mark a point thereof, on a stone firmly set in the ground, 5 chs. N. of the cor.

At  $8^h 24^m$  p.m. l.m.t. by my watch which is correct, I observed Polaris at western elongation, in accordance with Manual of Instructions, and mark a point in the line thus determined, on a peg driven in the ground, 5 chs. N. of my station. March 6, 1905.

March 7: At  $9:30$  a.m., I lay off the azimuth of Polaris,  $102^{\circ} 25'$  the east, and mark the meridian thus determined, by entering a small gourd in the stone set March 6, on which the meridian falls 0.3 ins. west of the mark determined by the solar.

At  $8^h 45^m$  a.m. l.m.t., I set off  $34^{\circ} 52'$  on the lat. arc,  $5^{\circ} 20'$  S. on the decl. arc, and mark a point in the meridian determined with the solar, by a cross in the

chains  
stone already set 5 chs. N. of my station; this mark falls  
11.5 ins. west of the mark established by the Polaris  
observation.

The solar apparatus, by p.m. and a.m. observations, defined  
positions for meridians, respectively about  $0^{\circ}26'$  West and  
 $0^{\circ}16'$  East of the meridian, established by the Polaris  
observations. Therefore I conclude that the adjustments of  
of the instrument are satisfactory.

The magnetic bearing of the true meridian at  $9^h 50^m$  a.m.,  
is  $N. 14^{\circ}32' W.$ ; the angle thus determined gives the mag.  
decl.  $14^{\circ}32' E.$

Plum & iron

West on sectional correction line bet. sres. 25 and 36.

Over mountainous land, descending through scattering timber  
and coarse brush.

22.60 Head of gulch, course N.; ascend through heavy timber.

33.00 Top of spur, extending N.; descend.

40.00 Set a malpais stone,  $18 \times 8 \times 6$  ins. in a mound of stone, for  
 $\frac{1}{4}$  sec. cor.  $\frac{1}{4}$  on N. face; from which  
A gum, 7 ins. diam., bears  $S. 71^{\circ} W.$ , 120 lbs. dist., marked  
 $S 36 B S.$

A pinon, 7 ins. diam., bears  $N. 49^{\circ}2' W.$ , 92 lbs. dist., marked  
 $S. 25 B S.$ ; bears heavy timber, bears N. and S. W.

60.50 Encounter heavy timber, bears N. and S.

63.00 Enter draw, course N.

69.00 Leave draw; ascend.

77.70 Top and descend.

80.00 Set a sandstone,  $18 \times 8 \times 6$  ins., 12 ins. in the ground, for cor.  
of sres. 25, 26, 35 and 36, marked with 1 notch on S. and E.  
edges; from which

A gum, 8 ins. diam., bears  $N. 23^{\circ} E.$ , 13 lbs. dist., marked  
 $P 15 N R 5 E S 25 B S.$

A gum, 6 ins. diam., bears  $S 30^{\circ} E.$ , 21 lbs. dist., marked  
 $P 15 N R 5 E S 36 B S.$

A gum, 9 ins. diam., bears  $S. 51^{\circ} W.$ , 11 lbs. dist., marked  
 $P 18 N R 5 E S 35 B S.$

A gum, 18 ins. diam., bears  $N. 72^{\circ}2' W.$ , 14 lbs. dist., marked  
 $P 18 N R 5 E S 22 B S.$

Land, mountainous and level.

Soil, gravelly, stony and rocky; 3rd and 4th cat.  
timber, gum and scattering pines, cedars and junipers;

Chains

undergrowth, algarrota and manzanita.  
 Mountainous, heavily timbered or land covered with dense  
 undergrowth, 80.00 chs.

Wrest, on sectional correction line bet. secs. 26 and 35.  
 Over mountainous land, descending through heavy gum  
 timber and dense brush.

- .40 Gulch, 20 chs. wide, course N.W. begin strip ascent.
  - 22.00 Foot of bluff 600 ft. high; offset 2.50 chs. N.; thence ~~run~~  
 west 4 chs.; thence offset S. 2.50 chs. to line.
  - 26.00 Head of gulch; course N.W.; ascend along N. slope of  
 mountain.
  - 40.00 Set a sandstone, 18 x 12 x 7 ins., 12 ins. in the ground, for  
 $\frac{1}{4}$  sec. cor. marked  $\frac{1}{4}$  on N. face; from which  
 A gum, 6 ins. diam., bears N.  $67\frac{1}{2}^{\circ}$  E.; 11 chs. dist., marked  
 $\frac{1}{4}$  S 26 B S.  
 A gum, 6 ins. diam., bears S.  $63^{\circ}$  E.; 27 chs. dist., marked  
 $\frac{1}{4}$  S 35 B S.
  - 50.00 Foot of bluff, 400 ft. high, bears N.W. and S.E.; offset  
 5 chs. N.; thence ~~run~~ west 15 chs.; thence offset S. 5  
 chs. to line, thence N., over gradually ascending ground.
  - 80.00 Set a sandstone, 18 x 10 x 6 ins., 12 ins. in the ground, for  
 cor. of secs. 26, 27, 34 and 35, marked with notch on S.  
 and 21 notches on E. edge; from which  
 A pinon, 6 ins. diam., bears N.  $46\frac{3}{4}^{\circ}$  E.; 127 chs. dist., marked  
 S 18 N R 5 E S 26 B S.  
 A pinon, 6 ins. diam., bears S.  $30^{\circ}$  E.; 134 chs. dist., marked  
 S 18 N R 5 E S 35 B S.  
 A pinon, 7 ins. diam., bears S.  $58^{\circ}$  W.; 49 chs. dist., marked  
 S 18 N R 5 E S 34 B S.  
 A gum, 14 ins. diam., bears N.  $25\frac{1}{2}^{\circ}$  W.; 56 chs. dist., marked  
 S 18 N R 5 E S 27 B S.
- Land, mountainous and gently rolling.  
 Soil, gravelly, stony and rocky; 3rd and 4th nat.  
 timber, gum and pinon; undergrowth, manzanita and  
 gum.  
 Mountainous, heavily timbered, or land covered with dense  
 undergrowth, 80.00 chs.
- March 7: At this ev. I set off 5.17' S. on the decl. and  
 and, at 12<sup>h</sup> 4<sup>m</sup> l. m. t., observe the sun on the meridian;  
 the resulting lat. is  $34^{\circ} 55'$ , or within  $\frac{1}{2}$  of true  
 $34^{\circ} - 55' N$



6 hms

from lat.

Start on sectional correction line bet. secs. 27 and 24.  
Over gradually descending ground through gum and  
pinon timber and dense undergrowth.

34.000 Start, bears NW and S. W.

41.000 Set in sandstone, 18 x 11 x 8 ins., 12 ins. in the ground, for  
sec. cor. marked 1/4 on N. face, from which  
A corner, 6 ins. diam., bears S. 71 1/4 E., 75 lbs. dist., marked  
1/4 S 34 B S.

A gum, 5 ins. diam., bears N. 27 W., 60 lbs. dist., marked  
1/4 S 27 B S.

43.25 Dry creek, 60 lbs. wide, course S. W.

52.000 Dry wash, 30 lbs. wide, course S.

53.000 Begin ascent.

55.80 Bend, bears NW and S. W.

62.50 Top of spur, extending S.; descend.

68.00 Dry wash, 20 lbs. wide, course S.; ascend.

75.00 Top of spur, extending S.

80.000 Set in sandstone, 18 x 11 x 8 ins., 12 ins. in the ground, for  
cor. of secs. 27, 28, 33 and 34, marked with ditch on S.  
and 3 notches on E. edge, from which

A pinon, 8 ins. diam., bears N. 44 3/4 E., 114 lbs. dist., marked  
S 18 N R 5 E S 27 B S.

A corner, 6 ins. diam., bears S. 75 3/4 E., 23 lbs. dist., marked  
S 18 N R 5 E S 34 B S.

A pinon, 5 ins. diam., bears S. 26 1/2 W., 55 lbs. dist., marked  
S 18 N R 5 E S 33 B S.

A corner, 24 ins. diam., bears N. 64 1/2 W., 23 lbs. dist., marked  
S 18 N R 5 E S 28 B S.

From this cor. high bluff bears 7 lbs. N. W.

Soil, gentle rolling, bare and mountainous.

Soil, gravelly and dry, 4th notch.

Pinon, gum, cedar and oak undergrowth, algar-  
neto, mesquite and hawthorn.

Mountains, or land covered with dense undergrowth,  
on on the

Start on sectional correction line bet. secs. 28 and 25  
along top of spur, through pinon and oak timber and  
undergrowth.

- 6 hams  
5.60 Begin descent.
- 12.00 Dry wash, 10 lbs. wide, course S. E.; ascend.
- 15.00 Side of spur, extending S. E.; descend.
- 17.00 Spout, bears N. and S. W.
- 24.00 Dry wash, 10 lbs. wide, course S. E.; ascend.
- 40.00 Set a sandstone, 18 x 10 x 4 ins. in a mound of stone, for  $\frac{1}{4}$  sec. cor. marked  $\frac{1}{4}$  on N. face; from which  
A pinon, 6 ins. diam., bears N.  $34^{\circ}$  E., 42 lbs. dist., marked  $\frac{1}{4}$  S. 28 B. S.  
A pinon, 8 ins. diam., bears S.  $40^{\circ}$  W., 95 lbs. dist., marked  $\frac{1}{4}$  S. 33 B. S.
- 43.00 Red sandstone bluff, 400 ft. high, bears 3 chs. N.; descend
- 47.40 Dry wash, 10 lbs. wide course S. E.; ascend.
- 63.00 Spur, bears N. W. and S. E.; descend.
- 67.00 Spout, bears N. and S.
- 70.00 Dry wash, 40 lbs. wide, course S.
- 75.00 Dry wash, 15 lbs. wide, course S. E.; begin gradual ascent through heavy timber.
- 80.00 Set a sandstone, 18 x 12 x 5 ins. 12 ins in the ground, for cor. of secs. 28, 29, 32 and 33 marked with 1 notch on S. and 4 notches on E. edge; from which  
A cedar, 12 ins. diam., bears N.  $19^{\circ}$  E., 79 lbs. dist., marked S 18 N R 5 E S 28 B S.  
A pinon, 5 ins. diam., bears S.  $30^{\circ}$  E., 41 lbs. dist., marked S 18 N R 5 E S 33 B S.  
A pinon, 9 ins. diam., bears S.  $36^{\circ}$  W., 77 lbs. dist., marked S 18 N R 5 E S 32 B S.  
A cedar, 10 ins. diam., bears N.  $39^{\circ}$  W., 70 lbs. dist., marked S 18 N R 5 E S 29 B S.
- Land, mountains and gently rolling.  
Soil, gravelly and stony; 3rd and 4th rate.  
Timber, cedar and pinon, undergrowth, algarrota, tresillo and mangarito.  
Mountains, heavily timbered or land covered with dense undergrowth, 80.00 chs.

March 7, 1915.

March 8: At 8<sup>h</sup> 25<sup>m</sup> a.m. l.m.t. Got off 34° 52' on the lat. and 4° 57' S. on the decl. arc, and determined true meridian with the solar at the cor. of secs. 28, 29, 32 and 33.

6 hours  
 11.1111 Thinner  $\frac{3}{4}$  mm  
 Rest, on sectional correction line, bet. sves. 29 and 32.  
 Over gradually rising ground, through heavy timber.  
 32.1111 Dry wash, 15 lbs. wide, course W.  
 Enter dense undergrowth, bears N. and S. W.  
 38.50 Bridge, bears N. and S.; descend.  
 41.1111 Set a sandstone, 24 x 6 x 6 ins. in a mound of stone, for  $\frac{1}{4}$   
 sec. cor. marked  $\frac{1}{4}$  on N. face; from which  
 A cedar, 14 ins. diam., bears N.  $31\frac{3}{4}^{\circ}$  E., 44 lbs. dist., marked  
 $\frac{1}{4}$  S 29 B S.  
 A pinon, 6 ins. diam., bears S.  $48\frac{3}{4}^{\circ}$  E., 62 lbs. dist., marked  
 $\frac{1}{4}$  S 32 B S.  
 High sandstone bluff bears in chs. N.  
 48.1111 Enter valley, bears N. and S.  
 55.80 Dry wash, 34 lbs. wide, course S.; lower heavy timber.  
 61.1111 Leave valley and begin steep ascent E. slope of mountain.  
 78.38 Set a sandstone, 18 x 8 x 6 ins. in a mound of stone, for  
 witness cor. to cor. of sves. 29, 30, 31 and 32. marked N 6  
 on W. face; with 1 notch on S. and 5 notches on E.  
 edge, from which  
 A cedar, 14 ins. diam., bears N.  $82\frac{3}{4}^{\circ}$  E., 37 lbs. dist., marked  
 N 6 S 18 N R 5 E S 29 B S.  
 A cedar, 8 ins. diam., bears S.  $32^{\circ}$  E., 11 lbs. dist., marked  
 N 6 S 18 N R 5 E S 32 B S.  
 A cedar, 9 ins. diam., bears S.  $83^{\circ}$  W., 61 lbs. dist., marked  
 N 6 S 18 N R 5 E S 32 B S.  
 A cedar, 8 ins. diam., bears N.  $63^{\circ}$  W., 47 lbs. dist., marked  
 N 6 S 18 N R 5 E S 29 B S.  
 80.1111 The point for sec. cor. falls on face of bluff.  
 Land, mountains and low,  
 Soil, gravelly, stony and rocky; 3rd and 4th rate.  
 Timber, cedar, pinon and oak; undergrowth, algar-  
 rita and manzanita.  
 Mountains, heavily timbered or land covered with  
 dense undergrowth, 80.1111 chs.  
 March 8: At this pt. I set off  $4^{\circ}54'$  S. on the decl.  
 arc; and, at 12<sup>h</sup> 4<sup>m</sup> l. m. t. observed the sun on the  
 meridian, the resulting lat. is  $34^{\circ}51'$ , or within  
 $10^{\circ}$  of the proper lat.

From witness cor of sves. 29, 30, 31 and 32, I off set as

27 55 27



chains

follows.

- South, 1.60 chs., then, on the offset line.  
 West 2.00 chs., then  
 4.38 North, 1.60 chs. to town line. Then a  
 West, on sectional correction line bet. sres. 30 and 31.  
 Along S. slope of mountain through scattering  
 timber and mangonito brush.  
 40.00 Set a sandstone, 18x8x6 ins, in a mound of stone,  
 for  $\frac{1}{4}$  sec. cor. marked  $\frac{1}{4}$  on N. face, and raise a mound  
 of stone, 2 ft. base, 1 $\frac{1}{2}$  ft. high, N. of cor. Pits im-  
 perceptible.  
 48.00 Descend.  
 54.00 Foot of steep descent.  
 70.40 Descend abruptly over sandstone towers.  
 76.00 Dry wash, 15 lbs. wide, course S., ascent.  
 77.67 Enter wet N. bay. of Sp. 2.16 chs. S. of cor. of sres. 25  
 and 36, S. 18 N., R. 5 E., as here before described.  
 Set a sandstone, 18x10x4 ins, 12 ins. in the ground,  
 for closing cor. of sres. 30 and 31, marked C, C on E.  
 with 1 groove on S. and 5 grooves on N. face, from  
 which  
 A rod, 14 ins. diam, bears S. 50 $\frac{1}{4}$ ° E., 14 lbs. dist, marked  
 C C S 18 N R 5 E S 31 B S.  
 An oak, 4 ins. diam, bears N. 47 $\frac{3}{4}$ ° E., 129 lbs. dist, marked  
 C C S 18 N R 5 E S 30 B S.  
 Land, mountainous.  
 Soil, stony and rocky; 4th rate.  
 Timber, scattering cedar, pine and oak, man-  
 gonito, mangonito and algarrota.  
 Mountainous land, 77.67 chs.

March 8, 1915.

Note: All cor. established on this line by Deputy  
 Herbert B. Maxson have been destroyed.

Edgar C. Dietrich  
 U.S. Deputy Surveyor.

--	--	--	--	--

6 hours

Survey commenced March 9, 1905, and executed with a James W. Quinn and Co. light mountain transit, No. 4609, with solar attachment. The horizontal limb is provided with two double verniers placed opposite to each other, reading to single minutes of arc, which is also the least count of the verniers of the latitude and declination arcs.

The instrument was examined, tested on the true meridian at Phoenix, found correct, and was approved by the surveyor general for Arizona, December 22, 1904.

I examined the adjustments of the transit and correct the level and collimation errors; then, to test the solar apparatus, by comparing its indications, resulting from solar observations made during a. m. and p. m. hours, with a meridian determined by observations on Polaris, I proceed as follows:

At the cor. of arcs 25, 26, 35 and 36, on the sectional course line, as heretofore described, latitude  $34^{\circ} 55'$  N., longitude  $111^{\circ} 47'$  W.; I set off  $34^{\circ} 52'$  N., on the lat. arc,  $4^{\circ} 22'$  S. on the decl. arc; and, at  $3^h 45^m$  p. m. l. m. t., determine with the solar a meridian and mark a point there, on a stake firmly set in the ground, 5 chs. N. of the cor.

At  $5^h 12^m$  p. m. l. m. t., by my watch, which is correct, I observe Polaris at western elongation, in accordance with Manual of Instructions, and mark a point in the line thus determined, on a peg driven in the ground, 5 chs. N. of my station.

March 9, 1905.

March 10: At  $8^h 25^m$  a. m. l. m. t., I lay off the azimuth off Polaris,  $0^{\circ} 25'$  to the east, and mark the meridian thus determined, by cutting a small groove in the stake set March 9, on which the meridian of said p. 3 ins. east of the mark determined by the solar.

At  $8^h 45^m$  a. m. l. m. t., I set off  $34^{\circ} 52'$  on the lat. arc,  $4^{\circ} 10'$  S. on the decl. arc; and mark a point in the meridian determined with the solar by a cross on the stake already set 5 chs. N. of my station. This mark falls 0.2 ins east of the meridian established by the Polaris observation.

Subdivision of S. 13 N., R. 5 E.

Chains

The solar apparatus, by p.m. and a.m. observations, defines positions for meridians, respectively about 11' east and 9' west of the meridian established by the Polaris observations; therefore I conclude that the adjustments of the instrument are satisfactory.

The magnetic bearing of the true meridian at 8<sup>h</sup> 35<sup>m</sup> a.m. is N. 14° 33' E.; the angle thus determined gives the mag. decl. 14° 33' E.

Spencer & run  
S. 0° 01' E. <sup>on a true line</sup> bet. secs. 35 and 36.

Over mountainous land, ascending through heavy timber.

7.00 Top, bears N. W. and S. E.

10.00 Head of gulch, course S. E.

18.00 Cross heavy timber, grain strip ascent.

36.50 Summit, extending S. E.; descent.

40.00 Set a sandstone, 18 x 12 x 4 ins., in a mound of stone, for 1/4 sec. ev. marked 4 on N. face; and raise a mound of stone, 2 ft. base, 1 1/2 ft. high, N. of ev. Set impracticable.

42.00 Summit, into heavy timber and dense brush.

47.00 Descent.

62.00 Gulch, 30 lbs. wide, course E.; ascent.

79.30 Summit of bluffs, 500 ft. high, bears E. and W.

Set a sandstone, 18 x 8 x 6 ins., in a mound of stone, for witness ev. to closing ev. of secs. 35 and 36, marked N 6 on top; 6 6 on N.; with 1 groove on E. and 5 grooves on W. face; from which

A wire, 16 ins. diam., bears N. 5° E., 44 lbs. dist, marked N 6 S 18 N R 5 E S 36 B S

A wire, 7 ins. diam., bears N. 23 3/4° W., 31 lbs. dist, marked N 6 S 18 N R 5 E S 35 B S.

The point for intersection with the S. edge of the Spr. is inaccessible.

Land, mountainous.

Soil, stony and rocky; 4th rate.

Timber, pine, fir and cedar; undergrowth, manzanita and sagebrush.

Mountains, heavily timbered or lower covered with dense manzanita, 79.30 chs.

From the ev. of secs. 25, 26, 35 and 36, on the western corner, Spencer

6 chains N. 0° 1' W., bet. secs. 25 and 26.  
 Over mountainous land, descending through heavy yellow  
 timber and dense mangrove brush.  
 17.00 brush, 15 lbs wide, course E. N. E.; ascend.  
 12.00 Top of E. slope of spur; ascend.  
 26.00 Enter draw, course N. W.  
 29.00 Dry wash, 20 lbs wide, course N. W.  
 31.00 Leave draw and heavy timber; ascend.  
 38.00 Top of W. slope of ridge; ascend.  
 40.00 Set a malpais stone, 18 x 10 x 6 ins., 12 ins. in the ground,  
 for  $\frac{1}{4}$  sec. cor. marked  $\frac{1}{4}$  on W. face, from which  
 a pinon, 5 ins. diam., bears N. 60° E., 30 lbs. dist., marked  
 $\frac{1}{4}$  & 25 B. S.; no other tree within limit, and raise a  
 mound of stone, 2 ft. base, 1 1/2 ft. high; W. of cor. pits  
 impracticable.  
 42.00 Foot, heavy N. and S. W., into gently rolling land.  
 45.00 Dry wash, 20 lbs wide, course N. W.  
 59.40 Leave mangrove and begin steep ascent of S. slope of  
 ridge.  
 8.00 Top of ridge, bears E. and W.  
 Set a sandstone, 20 x 8 x 6 ins., 15 ins. in the ground, for cor.  
 of secs. 23, 24, 25 and 26, marked with 2 notches on S.  
 and 1 notch on E. edge, and raise a mound of stone,  
 2 ft. base, 1 1/2 ft. high; W. of cor. pits impracticable.  
 Ground, mountainous, gently rolling and level.  
 Soil, sandy, gravelly and stony; 3rd and 4th roots.  
 Pinon, yucca and scattering juniper, cedar, pine and  
 oak; undergrowth, yellow mangrove, algarroba and  
 tussock.  
 Mountainous, heavily timbered or land covered with  
 dense undergrowth, 80.00 lbs.  
 March 10. At this cor. set off 490' S. on the decl. arc,  
 and, at 12 1/4 m. W. observe the sun on the meridian;  
 the resulting lat. is 34° 52' or within 0.4 of the  
 former lat.)

E. east, on a random line bet. secs. 24 and 25.  
 40.00 Set temp.  $\frac{1}{4}$  sec. cor.  
 80.00 Enter sec. E. body of Sp. 3 lbs. S. of cor. of secs. 19, 24,  
 25 and 30, as loc. for described.  
 Shaver & mm



6 hams S. 89.59° W., in a trap line bet. secs. 24 and 25.  
 Dry mountainous land descending through dense brush.  
 7.50 Gulch, 20 lbs. wide, course N. 8. W., as usual. Although heavy  
 mountain timber.  
 28.20 Spur extending S. from Wilson mountain, 400 ft.  
 above gulch; as usual.  
 34.111 Remains of cliff dwellings, brass 3 lbs. N.  
 41.113 Set a sandstone, 18 x 8 x 5 ins., in a mound of stone, for  
 1/4 sec. cor. marked 1/4 on N. face; from which  
 a yaw, 7 ins. diam., brass S. 41 1/2° W., 19 lbs. dist., marked  
 1/4 S. 25 B. 8.  
 A yaw, 14 ins. diam., brass N. 5 1/4° W., 50 lbs. dist., marked  
 1/4 S. 24 B. 8.  
 62.110 Dry wash, 30 lbs. wide, course S. W.; as usual.  
 70.00 Heavy brush timber, brass N. W. and S. W.  
 74.00 Top of ridge, brass E. and W.; enter dense algaroba  
 brush.  
 80.06 Top cor. of secs. 23, 24, 25 and 26.  
 Ground, mountainous.  
 Soil, gravelly, stony and rocky; 3rd and 4th water.  
 Timber, gum, pine and cedar; undergrowth, gum,  
 algaroba and manzanita.  
 Mountainous, brush timbered, or land covered with  
 dense undergrowth. 80.06 chs.

N. 10.01 W., bet. secs. 23 and 24.  
 Along top of ridge, through dense algaroba brush.  
 110.00 On the heavy timber, brass E. and W.  
 12.00 Begin descent from ridge.  
 25.00 Dry wash, 20 lbs. wide, course N.; as usual.  
 41.111 Set a sandstone, 18 x 8 x 6 ins., in a mound of stone, for  
 1/4 sec. cor. marked 1/4 on N. face; from which  
 a yaw, 7 ins. diam., brass N. 47 1/2° E., 22 lbs. dist., marked  
 1/4 S. 24 B. 8.  
 A yaw, 7 ins. diam., brass S. 22° W., 40 lbs. dist., marked  
 1/4 S. 23 B. 8.  
 49.50 Top of ridge, brass E. and W.; as usual.  
 61.20 Dry wash, 20 lbs. wide, course N.  
 63.50 Dry wash, 20 lbs. wide, course N.; lower heavy timber  
 and as usual.  
 80.00 Set a sandstone, 18 x 12 x 5 ins., 12 ins. in the ground,



for cor. of secs. 13, 14, 23 and 24, marked with 3 notches  
 on S. and 1 notch on E. edge, from which,  
 A pinon, 12 ins. diam., bears N. 21 $\frac{3}{4}$ ° E., 41 lbs. dist., marked  
 S 18 N R 5 E S 13 B S.  
 A pinon, 5 ins. diam., bears S. 77° E. 39 lbs. dist., marked  
 S 18 N R 5 E S 24 B S.  
 A pinon, 12 ins. diam., bears S. 59 $\frac{1}{2}$ ° W., 31 lbs. dist., marked  
 S 18 N R 5 E S 23 B S.  
 A pinon, 6 ins. diam., bears N. 35 $\frac{1}{4}$ ° W., 46 lbs. dist., marked  
 S 18 N R 5 E S 14 B S. and raise a mound of stone, 2 ft.  
 base, 1 $\frac{1}{2}$  ft. high, W. of cor.  
 This cor. stands 3110 ft above wash.  
 Land, mountainous.  
 Soil, gravelly, stony and rocky; 3rd and 4th cuts.  
 Pinon, yucca, pinon, cedar and juniper; undergrowth,  
 algarrobo, yucca and manzanita.  
 Mountainous, heavily timbered or land covered with  
 dense undergrowth, 30.00 chs.  
 March 10, 1905.

+

March 11: At 8 $\frac{30}{100}$  a.m. l.m.t., I set off 31° 53' in the lat.  
 and 3° 46' p. on the decl. arc; and determined a meri-  
 dian with the star at the cor. of secs. 13, 14, 23 and 24.  
 Placed S mm  
 N. 89° 59' E., on a random line bet. secs. 13 and 24.  
 Set temp.  $\frac{1}{4}$  sec. cor.  
 40.00 60.00 In feet of bluff, 400 ft high. Show offset as follows:  
 North, 2.54 chs. from, on the offset line.  
 N. 89° 59' E., 17.60 chs. from  
 South, 30 lbs.; then  
 N. 89° 59' E. 250 chs. where at (computed from sec. cor.)  
 811.00 Enclosed E. bdy. of Sp. 2 19 lbs. N. of cor. of secs. 13, 18, 19  
 and 24, as heretofore described.

40.00  
60.00

811.00

211.10

Placed S mm from pt. 2.24 chs. N of cor. to sec. 13, 18, 19 & 24  
 S. 89° 57' N., 250 lbs. then  
 North, 30 lbs.; then  
 S. 89° 57' N., 17.20 chs.; then  
 South, 2.54 chs. to the same line; S mm S mm  
 S. 89° 57' N., on a same line bet. secs. 13 and 24.  
 Over mountainous land, descending through scattering

6hains timber and dense brush.  
 26.00 Over of gulch, course N.; thence along N. slope of Wilson mountain.  
 35.00 Enter heavy growth timber, bears N. and S.  
 40.05 Set a sandstone 18 x 10 x 6 ins. in a mound of stone, for 1/4 sec. cor. marked 1/4 on N. face; from which a pinon, 13 ins. diam., bears N. 49 1/2° W., 98 lbs. dist., marked 1/4 S 13 B S.; no tree available S. of line; raise a mound of stone 2 ft. base, 1 1/2 ft. high, N. of cor. Pits impracticable. From this cor. bluff 1000 ft. high, bears 5 chs. S.  
 65.00 Over slope of mountain and heavy timber; descend.  
 80.10 Set cor. of secs. 13, 14, 23 and 24.  
 Land, mountainous.  
 Soil, stony and rocky; 4th rate.  
 Timber, pine, pinon, Quina, cedar and spruce; undergrowth, manzanita, yucca and algarrota.  
 Mountainous, heavily timbered or land covered with dense undergrowth, 50.00 chs.

N. 0° 1' W., bet secs. 13 and 14.  
 Over mountainous land, ascending through scattering pinon and dense brush.  
 2.00 Top of ridge, bears E. and W.; descend.  
 15.60 Trail, bears E. and W.  
 15.90 East fork of Dry creek, 35 lbs. wide, course W.  
 18.00 Ascend.  
 24.00 Top of W. slope of spur; descend.  
 29.00 Middle Fork of Dry creek, 40 lbs. wide, course S. W.  
 29.60 Trail, bears W. and S. W.  
 38.00 Ascend.  
 40.00 Set a sandstone, 18 x 8 x 4 ins., 12 ins. in its ground, for 1/4 sec. cor. marked 1/4 on W. face; from which a pinon, 6 ins. diam., bears N. 80 1/4° E., 18 lbs. dist., marked 1/4 S 13 B S.  
 A pinon, 12 ins. diam., bears N. 79 1/2° W., 39 lbs. dist., marked 1/4 S 14 B S.  
 41.00 Sharp spur, extending E.; descend.  
 44.00 Foot, bears N. W. and S. E.; ascend gradually.  
 49.00 Ascend steeply.  
 53.60 Sharp spur, extending E.; descend abruptly to  
 65.00 Canyon, 80 lbs. wide, course S. E.; ascend.

6 chains  
65.90

Trail, bars N. W. and S. E.

80.00

Set a malpais stone, 18x10x4 ins., in a mound of stone, for  
 cor. of sres, 11, 12, 13 and 14, marked with 4 notches on S.  
 and 1 notch on E. edge; from which  
 A gum, 10 ins. diam., bears N. 75° E., 36 lbs. dist., marked  
 S 18 N R 5 E S 12 B S  
 A gum, 8 ins. diam., bears S. 22 3/4° E., 74 lbs. dist., marked  
 S 18 N R 5 E S 13 B S  
 A gum, 6 ins. diam., bears S. 38 3/4° W., 61 lbs. dist., marked  
 S 18 N R 5 E S 14 B S  
 A gum, 12 ins. diam., bears N. 40° W., 82 lbs. dist., marked  
 S 18 N R 5 E S 11 B S

Ground, mountainous and level.  
 Soil, gravelly, stony and rocky; 3rd and 4th rate.  
 Timber, scattering, gum, cedar, pine and fir; undergrowth,  
 manzanita, gum, sagebrush and trootilla.  
 March 11. At this cor. I set off 3° 43' S. on the decl. arc.  
 and at 12 1/2 m. N. W. observe the sun on the meridian;  
 the resulting lat. is 34° 51' N

40.00

N. 89° 57' E. on a random line bet. sres. 12 and 13.

50.00

Set temp. 1/4 sres. cor.  
 Enter set E. bay of Sp. 8 lbs. N. of cor. point of sres.  
 7, 10, 13 and 18.

Thinner & run  
 West, on a random line bet. sres. 12 and 13.  
 Descending down gulch, through heavy timber and dense  
 brush.

24.00

Lower gulch, course S. W.; as usual.

29.00

Lower heavy timber, bars N. W. and S. W.

35.00

Top of S. slope of ridge.

40.00

Set a sandstone, 18x10x4 ins., 12 ins. in the ground, for  
 1/4 sres. cor. marked 1/4 on N. face; from which  
 A pine, 6 ins. diam., bears N. 83 3/4° E., 79 lbs. dist., marked  
 1/4 S 12 B S.

A pine, 6 ins. diam., bears S. 32 3/4° W., 56 lbs. dist., marked  
 1/4 S 13 B S.

41.00

Descent abruptly 60 ft.; thinner and ground sloping S. W.

69.70

Briny spring descent.

73.50

Trail, bars N. and S.

73.90

Microlite for of Dry creek, 40 lbs. wide, course S.; as usual.

Chain 80.08

Spr. cor. of sves. 11, 12, 13 and 14.  
 Ground, mountainous.  
 Soil, stony and rocky, 4th rock.  
 Timber, yew, pine, oak, pine and cedar; undergrowth,  
 manzanita, yew, algarrota and baccharis.  
 Mountains, heavily timbered or land covered with dense  
 undergrowth, 80.08 chs.  
 March 11, 1905.

Note: Continuous rain and snow since the morning of  
 March 11, prevented work until March 18.  
 March 18: At 8:25 a.m. l. m. t., & set off. 34.57 on the  
 lat. arc. 10' 1" S. on the decl. arc, and determined  
 meridian with the solar at the cor. of sves. 11, 12, 13  
 and 14.

Threw & run  
 N. 0° 01' N., lat. sves. 11 and 12.  
 Over mountainous land, along top of spur through dense  
 brush.

16.00 Top of red sandstone bluff, 600 ft. high, bears E. and N.

Offset as follows:  
 East, 15.00 chs. then on the offset line.  
 N. 0° 01' N., 18.00 chs. then

34.00 West, 15.00 chs. to the true line, then  
 along top of ridge, through scattering pine and dense  
 manzanita brush.

40.00 Set a sandstone, 18 x 12 x 4 ins, 12 ins. in the ground, for  
 1/4 sves. cor. marked 1/4 on N. face, from which  
 a yew, 10 ins. diam., bears S. 51 1/2° E., 28 chs. dist., marked  
 1/4 S 12 B A

A yew, 6 ins. diam., bears S. 80 1/2° N., 38 chs. dist., marked  
 1/4 S 11 B B.

48.90 Begin descent along E. slope of ridge.

66.00 Gulch, 10 chs. wide, course E.; ascended.

73.65 Set a sandstone, 24 x 10 x 10 ins., in a mound of stone, for  
 witness cor. to cor. of sves. 1, 2, 11 and 12, marked N. 6. on  
 N. face, with 5 notches on S. and 1 notch on E. edge.  
 and raise a mound of stone, 3 ft. base, 2 ft. high, N.  
 of cor.

80.00 The point for sves. cor. falls on S. side of canyon.  
 Ground, mountainous.

Grains Soil, stony and rocky; 4th rate.  
 Timber, scattering pine, cedar, oak and fir; under-  
 growth, manzanita and algaroba.  
 Mountains or land covered with dense undergrowth,  
 80.00 chs.

East, on a random line bet. secs. 1 and 12, from cor.  
 point, in canyon.

40.00 1/4 sec. cor.

80.17 Enter sec. E. bay. of Sp. 4 lbs. S. of cor. of secs. 1, 6, 7  
 and 12, as heretofore described.

Shower & firm

S. 89° 58' N., on a true line bet. secs. 1 and 12.

Down mountainous land, descending through scattering  
 timber and dense brush.

20.00 Begin steep descent over ledges.

37.80 Deep gulch, 30 lbs. wide, course S.; ascend.

40.00 1/2 S. on a sandstone ledge, bears E. and N.; on which  
 cut a cross (x) at the exact cor. point, for 1/4 sec. cor.  
 marked 1/4 on N. side of cross; from which  
 a pin, 30 ins. diam., bears N. 15 1/2° E., 199 lbs. dist., marked  
 1/4 S 1. B.S.

A pin, 14 ins. diam., bears S 1 1/4° N., 133 lbs. dist., marked  
 1/4 S 12 B.S.; and raise a mound of stone, 2 ft. base, 1 1/2  
 ft. high, N. of cor.

This cor stands 1000 ft. below cor. of secs. 1, 6, 7 and 12

45.00 Top of spur, extending S.; descend.

53.70 Gulch, 30 lbs. wide, course S.; ascend.

58.00 Spur, extending S.; descend.

73.00 Gulch, 40 lbs. wide, course S.

78.40 Trail, bears N. and S.

77.40 Middle fork of Dry creek, 40 lbs. wide, course S. S. E.;  
 ascend.

80.17 Sh. cor. <sup>point</sup> of secs. 1, 2, 11 and 12.

Land, mountainous.

Soil, stony and rocky; 4th rate.

Timber, scattering pine, yew and oak; undergrowth,  
 manzanita, yew and algaroba.

Mountainous or land covered with dense undergrowth,  
 80.17 chs.

March 18. At <sup>a p.p. etc. not point</sup> this cor. Post off 0° 58' S. on the line.

chains are, and, at 12<sup>h</sup> 6<sup>m</sup> l. m. t., observe the sun on the meridian; the resulting lat. is 34° 55' N.

N. 0° 01' W., on a true line bet sves. 1 and 2, from ev. point.

Low mountainous land, descending through scattering timber and dense brush.

1.80 Middle fork of Dry creek, 40 lbs. wide, course S. E.; begin steep ascent along E. slope of spur, extending S.

2.10 Trail, bears N. W. and S. E.

40.00 Falls on face of ledge, 40 ft. high.

40.40 Set a sandstone, 18 x 12 x 6 ins. in a mound of stone, for witness ev. to 1/4 ev. marked W 6 on N. face; from which

A pine, 12 ins. diam., bears S. 9° E., 14 lbs. dist., marked W 6 1/4 S 1 B S.

A pine, 8 ins. diam., bears S. 42° W., 36 lbs. dist., marked W 6 1/4 S 2 B S.

40.90 Top of slope descend a little 1000 ft.

49.00 Foot bears E. and W.; ascend.

70.70 Foot of bluffs 1000 ft high, bears E. and W.

At this point, cut a cross (x) on face of bluff for witness point between sves. 1 and 2, marked W 6 on N. W., at foot, with 1 groove on E. and 5 grooves on W. side of cross; and raise a mound of stone, 3 ft. base, 2 ft. high S. of ev.

Beyond this point the line north is totally impracticable.

Land, mountainous.

Soil, stony and rocky; 4th rate.

Timber, scattering pine, fir and oak; undergrowth, manzanita, algaroba and totillag.

Mountainous or land covered with dense undergrowth, 70.70 chs.

March, 18, 1905.

March 19: At 8<sup>h</sup> 21<sup>m</sup> a. m. l. m. t., set off 34° 52' on the lat. arc, 0° 37' S. on the decl. arc, and determine a meridian with the solar at the ev. of sves. 26, 27, 34 and 35, on the sectional correction line.

Thruer & run



Chains S. 0° 01' E. on a true line bet. sres. 34 and 35.  
Over gently rolling land, through heavy timber and dense brush.

14.00 Gulch, 15 lbs. wide, course N. W.; begin gradual ascent.

26.00 Wind road, bears E. and W.

32.00 Ascent over sandstone towers.

40.00 Set a sandstone, 20 x 14 x 5 ins., 15 ins. in the ground for  $\frac{1}{4}$  sec. cor. marked  $\frac{1}{4}$  on W. face; from which

A gum 6 ins. diam. bears S. 21° E., 67 lbs. dist., marked  $\frac{1}{4}$  S 35 B B.

A gum 6 ins. diam. bears N. 21° W., 70 lbs. dist., marked  $\frac{1}{4}$  S 34 B B.

42.00 Bluff, 300 ft. high, bears E. and W. Offset as follows.

West, 10.00 chs.; then, on the offset line: S. 0° 01' E., 10.00 chs. then

52.00 East, 10.00 chs., to true line

Descending.

64.00 Gulch, 40 lbs. wide, course W.; begin steep ascent

71.00 Set a sandstone, 18 x 12 x 5 ins., in a corner of stone, for witness cor. to closing cor. of sres. 34 and 35, marked W 6 on top, 6 6 on

N, with 2 grooves on E. and 4 grooves on W. face; from which

A gum 5 ins. diam. bears N. 34½° E., 11 lbs. dist., marked W 6 S 18 N R 5 E S 35 B B

A gum 6 ins. diam. bears N. 49½° W., 53 lbs. dist., marked W 6 S 18 N R 5 E S 34 B B.

The point for intersection of S. body is on top of inaccessible bluff.

Land, mountains and gently rolling.

Soil, gravelly, stony and rocky; 3rd and 4th rates.

Timber, gum, spruce and cedar; undergrowth, gum and mangrove.

Mountains, mainly timbered or land covered with dense undergrowth 71.00 chs.

From the cor. of sres. 26, 27, 34 and 35, on the sectional correction line, Run

N. 0° 01' W. bet. sres. 26 and 27.

Over gently rolling land, through heavy timber and dense brush.

31.00 Gulch, 15 lbs. wide, course W.

33.30 Gulch, 20 lbs. wide, course W.; bear heavy timber and ascend.

39.70 Top, bears E. and W.

40.00 Set a malpais stone, 18 x 10 x 4 ins., 12 ins. in the ground, for  $\frac{1}{4}$  sec. cor. marked  $\frac{1}{4}$  on W. face; from which

A pinon, 6 ins. diam., bears S. 54½° W., 61 lbs. dist., marked  $\frac{1}{4}$  S 27 B B; no other true within limit, and raise a

Subdivision of S. 18 N., R. 5 E.

6 chains minimum of stone, 2 ft. base, 1 1/2 ft. high, W. of cor. Pits impracticable.

45.60 Descend, bars N. and S. W.

54.80 Dry creek, 60 lbs. wide, course S. W.; thence over gently rolling land.

80.00 Set a sandstone, 20 x 10 x 5 ins., in a mound of stone, for cor. of secs. 22, 23, 26 and 27, marked with 2 notches on S. and E. edges; from which

A juniper, 12 ins. diam., bears N. 59 3/4° E., 57 lbs. dist., marked S 18 N R 5 E S 23 B S.

A pinon, 6 ins. diam., bears S. 61 3/4° E., 116 lbs. dist., marked S 18 N R 5 E S 26 B S.

A juniper, 12 ins. diam., bears N. 38 1/2° W., 85 lbs. dist., marked S 18 N R 5 E S 22 B S.

A pinon, 6 ins. diam., bears S. 33° W., 131 lbs. dist., marked S 18 N R 5 E S 27 B S.

From this cor. Rock tanks bear 2 chs. N. These tanks contain water nearly the year round.

Land, gently rolling and mountainous.

Soil, gravelly, stony and rocky, 3rd and 4th rates.

Timber, yellow pinon, cedar and oak; undergrowth, algaroba, yam, manzanita and toothila.

Mountains, largely timbered or land covered with dense undergrowth, 80.00 chs.

March 19: At this cor. I set off 0° 34' S. by the decl. arc, and, at 12 5/8 m. t., observe the sun on the meridian; the resulting lat. is 34° 52' or within 0° 4' of the proper lat.

40.00 East, on a random line bet. secs 23 and 26. Set trip. 1/4 sec. cor.

80.00 Enter N. and S. line 2 chs. N. of cor. of secs. 23, 24, 25 and 26.

Thence I run

N. 89° 59' W., on a true line bet. secs. 23 and 26.

Over mountainous land, descending through dense brush.

26.00 Enter heavy yellow timber, bears N. and S. W.

31.00 Dry wash, 34 lbs. wide, course S. S. W.; ascend.

40.00 Set a sandstone, 18 x 10 x 8 ins., 12 ins. in the ground, for 1/4 sec. cor. marked 1/4 on N. face; from which

- 67.00 A pinon, 7 ins. diam., bears N.  $23\frac{1}{2}^{\circ}$  E., 28 lbs. dist., marked  $\frac{1}{4}$  S 23 B S.
- A pinon, 7 ins. diam., bears S.  $75\frac{1}{2}^{\circ}$  W., 15 lbs. dist., marked  $\frac{1}{4}$  S 26 B S.
- 49.00 Top of ridge, bears N. and S.; descend.
- 60.00 Over heavy timber, bears N. and S. W.
- 72.00 Dry wash, 40 lbs. wide, course S.; ascend.
- 72.30 Soil, bears N. and S.
- 74.20 Spring, extending S.; descend.
- 78.50 Gyleh, 30 lbs. wide, course S. E.
- 80.03 Str. cor. of secs. 22, 23, 26 and 27.  
Land, mountainous.  
Soil, gravelly, stony, stony and rocky; 3rd and 4th rather  
sandy, yellow, pinon wood cedar, sandalwood, man-  
zanita and algarrota.  
Mountainous, mainly timbered or land covered with  
dense undergrowth, 60.03 chs.

N. 0° 01' W. bet. secs. 22 and 23.  
Overgrown rolling land, through scattering timber and  
dead brush.

- 24.20 Asend.
- 28.80 Top of ridge, bears N. W. and S. E.; descend.
- 32.25 Small dry wash, course E.; ascend.
- 36.30 Top of spur, extending S. E.; descend along E. slope.
- 40.00 Set a sandstone, 20 x 10 x 8 ins., 15 ins. in the ground, for  
 $\frac{1}{4}$  sec. cor. marked  $\frac{1}{4}$  on N. face. from which
- A pinon, 8 ins. diam., bears S.  $21\frac{1}{4}^{\circ}$  E., 42 lbs. dist., marked  
 $\frac{1}{4}$  S 28 B S.
- A pinon, 10 ins. diam., bears N.  $23\frac{1}{4}^{\circ}$  W., 64 lbs. dist., marked  
 $\frac{1}{4}$  S 22 B S.
- 44.75 Enter draw, course S. E.
- 52.70 Dry wash, 15 lbs. wide, course S. E.; bears down; ascend.
- 74.50 Side of ridge, bears N. W. and S. E.; descend along E. slope.
- 80.00 Set a sandstone, 18 x 10 x 4 ins., 12 ins. in the ground, for  
cor. of secs. 14, 15, 22 and 23, marked with 2 notches on  
S. and 2 notches on E. edge. from which
- A pinon, 9 ins. diam., bears N.  $49\frac{1}{2}^{\circ}$  E., 17 lbs. dist., marked  
S 18 N R 5 E S 14 B S.
- A pinon, 12 ins. diam., bears S.  $35\frac{1}{2}^{\circ}$  E., 119 lbs. dist., marked  
S 18 N R 5 E S 23 B S.

Subdivision of S. 18 N., R. 5 E.

6 chains

A pinon, 10 ins. diam., bears N. 23 1/2° W., 44 lbs. dist., marked S 18 N. R 5 E S 15 B S.; no other trees within limit, and raise a mound of stone, 2 ft. base, 1 1/2 ft. high, N. of cor. Pits impracticable.

Land, mountainous and gently rolling. Soil, gravelly and stony; 3rd and 4th rate. Similar scattering pinon and cedar; undergrowth, manzanita and algarrota. Mountains or land covered with dense undergrowth, 80.00 chs.

March 19, 1905.

March 20: At 8:45 a.m. v.m. l.m.t., set off 34.54 on the lat. arc, 0° 13' f. on the decl. arc, and determined meridian with the solar at the cor. of secs. 14, 15, 22 and 23.

Pinon & Elm  
S. 89° 59' E., on a random line bet. secs. 14 and 23.

40.00 Set temp. 1/4 sec. cor.  
80.12 Intersect N. and S. line 5 lbs. N. of cor. of secs. 13, 14, 23 and 24.

Pinon & Elm  
N. 89° 57' W., on a true line bet. secs. 14 and 23. Very mountainous land, descending along S. slope of ridge through scattering timber.

21.80 Small traps NW and S W.  
22.60 Dry creek, 40 lbs. wide, course S. S. W., water dense brush and aspen.

26.00 Top of spur extending S.; aspen.

40.06 Set a sandstone, 18 x 12 x 4 ins., in a mound of stone, for 1/4 sec. cor. marked 1/4 on N. face, from which  
A pinon, 12 ins. diam., bears N. 76 1/4° E., 29 lbs. dist., marked 1/4 S 14 B S.

A pinon, 10 ins. diam., bears S. 38 1/4° W., 52 lbs. dist., marked 1/4 S 23 B S.

57.00 West fork of Dry creek, 40 lbs. wide, course S. E.; aspen.

57.40 Small, bears N. W. and S. E.  
80.12 Top cor. of secs. 14, 15, 22 and 23.

Land, mountainous. Soil, gravelly and stony; 3rd and 4th rate. Similar, scattering pinon, cedar and yew; undergrowth, algar.

6 hams

arta, mangarita and trinitilla.  
 Mountains or land covered with dense undergrowth, 80.12  
 chs.

N. 0° 01' N., bet. secs. 14 and 15.  
 Dry mountainous land, descending through scattering tim-  
 ber and dense brush.

- 20.00 Descent steep.
- 25.00 Gulch, 20 lbs. wide, 300 ft. below, near, course E.; ascend.
- 28.40 Spur, extending E.; descend.
- 39.00 Trail, bears N. W. and S. E.
- 40.00 Falls in West fork of Dry creek, 30 lbs. wide, course S. E.,  
 ascend.

41.00 Several tanks, bear 2.00 chs. W. These tanks contain water  
 the year around.

42.00 Set a sandstone, 18 x 8 x 6 ins. in a mound of stone, for nit-  
 rous ev. to  $\frac{1}{4}$  sec. ev. marked N 6  $\frac{1}{4}$  on N. face; from  
 which

A pinon, 7 ins. diam., bears N. 53  $\frac{3}{4}$ ° E., 78 lbs. dist.; marked  
 N 6  $\frac{1}{4}$  S 14 B S.

A cedar, 6 ins. diam., bears N. 38  $\frac{2}{4}$ ° W., 95 lbs. dist., marked  
 N 6  $\frac{1}{4}$  S 15 B S.

- 66.46 Set a point on line.
- 73.94 Foot of red sandstone bluff, 500 ft. high, bears E. and W.

Set a sandstone, 18 x 8 x 4 ins., 12 ins. in the ground, for nit-  
 rous ev. to top of secs. 10, 11, 14 and 15, marked N 6 on N. face,  
 with 4 notches on S. and 2 notches on E. edge; from which

A juniper, 6 ins. diam., bears N. 20  $\frac{1}{4}$ ° E., 170 lbs. dist., marked  
 N 6 S 18 N R 5 E S 14 B S.

A pinon, 5 ins. diam., bears S. 19  $\frac{1}{4}$ ° W., 16 lbs. dist., marked  
 N 6 S 18 N R 5 E S 15 B S.; no other trees within limit, and  
 raise a mound of stone, 2 ft. base, 1  $\frac{1}{2}$  ft. high, N. of ev. pits  
 impracticable. This ev. stands at mouth of small cove, ex-  
 tending N. into bluff, and is about 600 ft. above  $\frac{1}{4}$  sec.  
 ev.

- 80.00 Hills on top of bluff.

Land, mountainous.  
 Soil, gravelly, stony and rich; 3rd and 4th water.  
 Timber, scattering pinon, cedar and yew; undergrowth,  
 mangarita, algarruta and trinitilla.  
 Mountains or land covered with dense undergrowth,



6 hrs

80.00 hrs.  
March 20: At this cor. I set off 9.14 S. on the oval. and  
and at 12<sup>h</sup> 5<sup>m</sup> l. m. t., observed the sun on the meridian,  
the resulting lat. is 34° 54'.

Drum point 66.46 chs., previously set on line bet. sves. 14  
and 15, I run  
S 89° 57' E, 14.26 chs. <sup>on an offset line</sup>  
North, 13.54 chs., to find them  
S 89° 57' E, on a rounded line bet. sves. 11 and 14.

40.00 Set temp.  $\frac{1}{4}$  sec. cor.  
79.92 Transit set N. and S. line 3 chs. S. of cor. of sves. 11,  
12, 13 and 14.

Barner I run  
N. 69° 50' W., on a round line bet. sves. 11 and 14.  
Over mountainous land, descending through scattering  
timber

9.60 Gulch, 60 lbs. wide, course S. E.; around some sandstone  
rocks

20.00 Contour across manganese brush, bears N. W. and S. E.

31.00 Rocky ridge, 400 ft. above gulch, bears N. W. and S. E.;  
descend.

39.96 Set a sandstone, 18 x 10 x 5 ins. in a mound of stone, for  $\frac{1}{4}$  sec.  
cor. marked  $\frac{1}{4}$  on N. face. From which  
A juniper, 7 ins. diam., bears N. 3° W., 115 lbs. dist., marked  
B 11 B 2.

A yew, 6 ins. diam., bears S. 46 $\frac{3}{4}$ ° E., 55 lbs. dist., marked  
C 14 B 2; and raise a mound of stone, 2 ft. base, 1 $\frac{1}{2}$  ft. high,  
N. of cor.

43.70 Gulch, 15 lbs. wide, course S.

65.00 Summit of bluff, 400 ft. high. Offset S. 13.54 chs., then

79.92 N. 89° 50' W. 14.26 chs.; then  
N. 10° 01' W. 7.49 chs. to  
Transit set of sves. 10, 11, 14 and 15.  
Course, mountainous.

Soil, gravelly, stony and rocky; red sand 4th riv. etc.  
Timber, yellow pine, cedar and fir, undergrowth, man-  
ganese and algaroba.

Mountainous land around with dense undergrowth, 79.92  
hrs.

March 20, 1905



Chains March 21: At 5<sup>h</sup> 51<sup>m</sup> a.m. l.m.t., I set off 3:11° 54' N on the lat. arc; 0° 10' N. on the decl. arc; and determine a meridian with the solar at the witness ev. of sves. 10, 11, 14 and 15. I then proceed to point 66.46 chs. on line bet. sves. 14 and 15, and run on offset

West, 10.00 chs; then  
N. 0° 01' N. 25.00 chs. then  
11.46 Offset <sup>East</sup> 10.00 chs. to line. Thence I run  
N. 11° 01' N., bet. sves. 10 and 11

Over mountainous land, ascending through heavy timber and dense undergrowth,  
18.50 Gulch, 10 lbs. wide, course W. ascending.

25.00 Spur, extending S.E.; ascending; heavy heavy timber.

36.50 Gulch, 60 lbs. wide, course S.E.; begin steep ascent of S. slope of mountain.

37.00 Trail, bears N.W. and S.E., have dense undergrowth.

39.50 Set a cross (x) on face of sandstone terrace, for witness ev. to  $\frac{1}{4}$  sves. ev. marked W below and  $\frac{1}{2}$  on N. side of cross, and raise a mound of stone, 2 ft. base, 1 1/2 ft. high, S. of ev. <sup>as passage excepted East and West and if possible to put mound West of cor.</sup> Sits impracticable.

41.00 Falls on an impassable point.

60.00 Broad of gulch, course S.W.

80.00 Set a sandstone, 24 x 10 x 6 ins. in a mound of stone, for ev. of sves. 2, 3, 11 and 11, marked with 5 notches on S. and 2 notches on E. edge, from which  
A yew, 7 ins. diam., bears S. 64 1/2° E., 42 lbs. dist., marked S 18 N R 5 E S 11 B S.

A yew, 12 ins. diam., bears S. 3 3/4° W., 36 lbs. dist., marked S 18 N R 5 E S 11 B S.

A yew, 5 ins. diam., bears N. 88° W., 69 lbs. dist., marked S 18 N. R 5 E S 3 B S. no other trees within limit, and raise a mound of stone, 2 ft. base, 1 1/2 ft. high, W. of ev. Sits impracticable. This ev. stands 700 ft. above gulch. Land, mountainous.

Soil, gravelly, stony and rocky; 3rd and 4th rate.  
Timber, yew, Pinon, Cedar, pine, oak, spruce and maple; undergrowth, mosses, fern and algarrota.

Mountains, heavily timbered or land covered with dense undergrowth, 80.00 chs.

March 21: At this ev. I set off 0° 13' N. on the decl. arc, and, at 12<sup>h</sup> 4<sup>m</sup> l.m.t., observed the sun on the meridian,



6 hrs  
 Cut a cross (+) at the next cor. point for  $\frac{1}{4}$  sec. cor. marked  $\frac{1}{4}$  on W. side of cross. from which  
 An oak, 5 ins. diam., bears S.  $52^{\circ}$  E., 12 lbs. dist., marked  $\frac{1}{4}$  S. 2 B. S.  
 An oak, 7 ins. diam., bears S.  $87^{\frac{3}{4}}$  W., 16 lbs. dist., marked  $\frac{1}{4}$  S. 3 B. S.  
 44.00 Grad of gulch, bears E. S. E.; ascend.  
 57.00 Top of E. slope of high round mountain; descend.  
 62.00 Grad of gulch, course E.; bear heavy timber and ascend.  
 64.45 Spr., extending S. E.; descend abruptly over bridge, 200 ft. to  
 67.50 Gulch, 20 lbs. wide, course S. E.; begin steep descent.  
 69.42 Foot of bluffs, 1200 ft. high, bear E. and W. Closing Cor. *ft. inaccessible*  
 Set a sandstone, 24 x 10 x 8 ins. in a mound of stone, for witness cor. to closing cor. of secs. 2 and 3, marked N 6 on top, 6 6 on S., with 2 grooves on E. and 4 grooves on W. face, and raise a mound of stone, 3 ft. base, 2 ft. high, S. of cor. Pits impracticable.  
 Land, mountainous.  
 Soil, stony and rocky; 4th rate.  
 Timber, pine, fir, cedar and oak, among growth, manzanito.  
 Mountainous land, 69.42 chs.

March, 22, 1905.

March 23: At 8<sup>h</sup> 35<sup>m</sup> a.m. l.m.t., I set off 34.52 on the lat. arc, 0° 59' N. on the decl. arc, and determined meridian with the solar at the cor. of secs. 27, 28, 33 and 34 on the sectional correction line.

From P. run

S.  $0^{\circ} 02'$  E. on a true line bet. secs. 33 and 34.

Descending gradually through pine and cedar timber and dense brush.

32.00 Enter valley, bears NW. and S. W.

36.00 Old corral, bears 6.00 chs. E.

37.55 Dry wash, 20 lbs. wide, course S. E.

39.60 Road, bears E. and W.

40.00 Set a marble stone, 18 x 8 x 6 ins. in a mound of stone, for  $\frac{1}{4}$  sec. cor. marked  $\frac{1}{4}$  on W. face, from which  
 A cedar, 6 ins. diam., bears S.  $84^{\frac{1}{4}}$  E., 123 lbs. dist., marked  $\frac{1}{4}$  S. 34 B. S.

A pine, 10 ins. diam., bears S.  $54^{\frac{1}{4}}$  W., 107 lbs. dist., marked

6 brass  $\frac{1}{4}$  S 33 B S.  
 43.60 Drail, brass NK and S. W.  
 47.00 Dry creek, 60 lbs. wide, course S. W.  
 52.85 Dry wash, 20 lbs. wide, course N. W.; Grand Valley; as usual.  
 78.86 Top of E. slope of ridge.  
 Intersect S. bay. of Sp. 14 11 lbs. E. of cor. of sres. 3 and 4, S. 17 N., R. 5 E., which is a sandstone, 6 x 8 x 6 ins. above ground, marked and witnessed, as described by the surveyor general. ~~Destroy all old markings having reference to~~ <sup>T. BRUSE</sup>  
 Set a sandstone, 18 x 12 x 5 ins., 12 ins. in the ground, for closing cor. of sres. 33 and 34, marked 6 Don N.; with 3 grooves on E. and W. faces, and raise a mound of stone, 2 ft. base, 1 1/2 ft. high, N. of cor. Pits impracticable.  
 Land, mountains and level.  
 Soil, sandy, gravelly and stony; 3rd and 4th rates.  
 Timber, white, cedar, oak and yew; undergrowth, algarrota and trinitilla.  
 Mountains or land covered with dense undergrowth,  
 78.86 chs.

From the cor. of sres. 27, 28, 33 and 34, in the sectional correction line from N. 0 0 1/2 W. bet. sres. 27 and 28.

Original rolling land, through heavy timber and algarrota brush.

- 40.00 Set a sandstone, 18 x 8 x 6 ins., 12 ins. in the ground, for  $\frac{1}{4}$  cor. marked  $\frac{1}{4}$  on N. face, from which  
 A cedar, 10 ins. diam., bears S. 56° E., 41 lbs. dist., marked  $\frac{1}{4}$  S 27 B S.  
 A yew, 6 ins. diam., bears S. 88  $\frac{3}{4}$ ° W., 62 lbs. dist., marked  $\frac{1}{4}$  S 28 B S.
- 80.00 Set a sandstone, 18 x 8 x 8 ins., 12 ins. in the ground, for cor. of sres. 21, 22, 27 and 28, marked with 2 notches on S. and 3 notches on E. edge, from which  
 A yew, 8 ins. diam., bears N. 13  $\frac{1}{2}$ ° E., 105 lbs. dist., marked S 15 N R 5 E S 22 B S.  
 An oak, 6 ins. diam., bears S. 28  $\frac{1}{2}$ ° E., 44 lbs. dist., marked S 18 N R 5 E S 27 B S.  
 A yew, 6 ins. diam., bears N. 51  $\frac{1}{2}$ ° W., 79 lbs. dist., marked S 18 N R 5 E S 21 B S.; no other trees within limit, and raise a mound of stone, 2 ft. base, 1 1/2 ft. high, N. of cor.

Chains

Ground, mostly rolling and level.  
 Soil, generally sandy and stony; 3rd and 4th rates.  
 Timber, pine, cedar, gum and oak; undergrowth, al-  
 garrata fasciata and manzanita.  
 Heavily timbered land, 8000 chs. ✓  
 March 23: At this ev. Port off 10° 11' N. on the decl.  
 arc; and, at 12<sup>h</sup> 6<sup>m</sup> l. m. t., observed the sun on the  
 meridian; the resulting lat. is 34° 53' N.

40.00

East, on a random line bet. secs. 22 and 27.  
 Set temp.  $\frac{1}{4}$  sec. ev.

80.03

Intersect N. and S. line 4 chs. S. of secs. 22, 23, 26  
 and 27.  
 Showed Pinn

211

S. 89° 58' N., on a long line bet. secs. 22 and 27.  
 Over level land, through heavy timber.

13.60

Old road, bears N. and S.; ascend.

18.31

Top of ridge, bears N. and S., heavy timber; descend.

411.01 $\frac{1}{2}$

Dry wash, 10 chs. wide, crosses S. E.; ascend.  
 Set a sandstone, 18 x 8 x 6 ins., in a mound of stone, for  $\frac{1}{4}$   
 sec. ev. marked  $\frac{1}{4}$  on N. face, from which  
 a cedar, 8 ins. diam., bears S. 34 $\frac{3}{4}$ ° N., 83 chs. dist., marked  
 $\frac{1}{4}$  S. 27° B. S. on other top, and raised a mound of stone,  
 2 ft. base, 1 $\frac{1}{2}$  ft. high, N. of ev. Pits impracticable.  
 From this ev. the C. B. coral bears S. about 18.00 chs.  
 dist.

49.00

Top of ridge, bears N. and S. N.; descend.

58.00

Enter heavy timber, bears N. and S.

64.00

Dry wash, 15 chs. wide, crosses S. S. N.

77.50

Dry wash, 30 chs. wide, crosses S.; enter dense brush.

80.03

Set ev. of secs. 21, 22, 27 and 28.

Ground, mountains and level.  
 Soil, sandy, gravelly and stony; 3rd and 4th rates.  
 Timber, cedar, pine, gum and oak; undergrowth, al-  
 garrata and manzanita.  
 Mountains, heavily timbered or land covered with  
 dense undergrowth 20.03 chs.

N. 0° 02' N., bet. secs. 21 and 22.

Over level land, through heavy timber and dense brush.

6 chains 2.60 Dry wash, 20 lbs. wide, course S. E.  
 12.50 Clear heavy timber, bears N. W. and S. E.; ascent.  
 35.00 Top 300 ft. above gulch, bears E. over N.; steeper along N. slope of spur over broken ground.  
 40.00 Set in sandstone, 18 x 10 x 5 ins. 12 ins. in the ground, for 1/4 sec. cor. marked 1/4 on N. face, from which  
 A rod, 24 ins. diam., bears N. 66 1/2° E., 18 lbs. dist., marked 1/4 S 22 B D.  
 A pinon, 6 ins. diam., bears S. 17° W., 14 lbs. dist., marked 1/4 S 21 B D.

51.00 Grad of gulch, course N. begin steep ascent.  
 54.00 Top of bluff, 1000 ft. high, bears E. and N. Offset as follows:

East, 20.00 chs., then, on the offset line.  
 N. 0° or N. 26.00 chs.; then:

80.00 Offset West 20.00 chs. to true line.

The point for sec. cor. falls on sandstone ledge, bears E. and N. on which

cut a cross (+) at the exact cor. point, for cor. of secs. 15, 16, 21 and 22, marked with 3 notches on S. and E. edges, from which

A pinon, 10 ins. diam., bears N. 56 1/2° E., 90 lbs. dist., marked S 18 N R 5 E S 15 B D.

A pinon, 10 ins. diam., bears S. 69 1/2° E., 49 lbs. dist., marked S 18 N R 5 E S 22 B D. no other trees within limit, and

raise a mound of stone 2 ft. base, 1 1/2 ft. high, 6 lbs. N. of cor. Pits impracticable.

Land, mountains and level.

Soil, sandy, gravelly, stony and rocky; 3rd and 4th rate.

Timber, pinon, yellow cedar and oak, undergrowth, manzanita, algarita and treotilla.

Mountains, mainly timbered, or land covered with dense undergrowth, 80.00 chs.

March, 23, 1905.

March, 24: At 8<sup>h</sup> 30<sup>m</sup> a.m., l.m.t., I set off 34.54<sup>m</sup> on the lat. arc, 1° 21' N. on the decl. arc, and determine a meridian with the solar at the cor. of secs. 15, 16, 21 and 22.

Phaner S pm

as ledge extends E. West pits impracticable  
 at point mound (west) corner

6 chains N. 59° 58' E., on a true line bet. secs. 15 and 22.  
 40.00 Set 1/4 sec. cor.  
 80.07 Enter set N. and S. line 3 lbs. N. of cor. of secs. 14, 15, 22 and 23.  
 Plumer & inn  
 S. 59° 59' W., on a true line bet. secs. 15 and 22.  
 Over mountainous land ascending through scattering  
 timber and dense brush.  
 25.00 Dip, bears N. W. and S. E.  
 40.03 1/2 Set a sandstone, 18 x 12 x 5 ins. in a mound of stone,  
 for 1/4 sec. cor. marked 1/4 on N. face, from which  
 a juniper, 8 ins. diam. bears S. 42° 3/4' E., 229 lbs. dist.,  
 marked 1/4 S 22 B S.  
 A juniper 24 ins. diam. bears N. 50° 1/2' W., 254 lbs. dist., marked  
 1/4 S 15 B S.  
 56.00 Descend, bears N. W. and S. E.  
 61.00 Gulch, 20 lbs. wide, course S. E.; begin steep ascent along  
 N. slope of high rocky spur.  
 80.07 The cor. of secs. 15, 16, 21 and 22.  
 Land mountainous and greatly rolling.  
 Soil, gravelly, stony and rocky; 3rd and 4th rate.  
 Timber, scattering Pinon, juniper and cedar; under-  
 growth, manzanita and algaroba.  
 Mountainous or land covered with dense undergrowth,  
 80.07 chs.

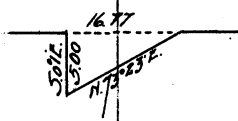
N. 0° 02' N., bet. secs. 15 and 16.  
 Over mountainous land, ascending through scattering  
 timber and dense brush.  
 5.00 Dry wash, 20 lbs. wide, course S. E.; ascend.  
 13.00 Foot of bluff, 1000 ft. high, bears E. and W.  
 Offset as follows:  
 East 25.00 chs.; then, on the offset line.  
 N. 0° 02' N., 45.20 chs.; along foot of bluff; then  
 58.20 West 25.00 chs. to line. Sight for 1/4 sec. cor. measurable.  
 but a cross (x) on N. side of high ledge, for witness cor. to  
 1/4 sec. cor. marked N 6 above and 1/4 on N. side of cross.  
~~or ledge extends East and West it is impossible to get ground level of cor~~  
 underneath a mound of stone, 2 ft. base, 12 ft. high, 6 lbs. N.  
 of cor. is impracticable. This cor. stands 800 ft. below top  
 of bluff. Plumer  
 N. 0° 02' N., on true line  
 Descending steeply, through heavy timber.



80.00 Set a sandstone, 18 x 10 x 8 ins., 12 ins. in the ground, for cor. off srs. 9, 10, 15 and 16, marked with 4 notches on S. and 3 notches on E. edge; from which  
 A pinon, 14 ins. diam., bears N. 74 1/2° E., 44 lbs. dist., marked S 18 N, R 5 E S 10 B S.  
 A pinon, 10 ins. diam., bears S. 81 1/4° E., 107 lbs., dist., marked S 18 N R 5 E S 15 B S.  
 A pinon, 8 ins. diam., bears S. 65° N., 44 lbs. dist., marked S 18 N R 5 E S 16 B S.  
 A pinon, 12 ins. diam., bears N. 61 1/4° W., 50 lbs. dist., marked S 18 N R 5 E S 9 B S.

Land, mountains.  
 Soil, stony and rocky; 4th rate.  
 Timber, Pinon and Fir, undergrowth, manzanita and algarrota.  
 Mountains, heavily timbered or land covered with dense undergrowth, 80.00 chs.  
 March, 24: At this cor. I set off 1024' N. in the mer. arc; and, at 12 1/4 m. l. m. t., observe the sun on the meridian; the resulting lat. is 34° 54' N.

N. 89° 59' E., in a random line bet. srs. 10 and 15.  
 31.70 Set compass point for witness cor. to 4 srs. cor. on top of rocky spur, diam. & slope of which it is impracticable to climb. A sand flag wound to foot of bluffs on line, and remaining to distance, which is a fallow - Run Area 0° i E. 50. Ch.  
 48.47 Foot of abrupt descent. to base of spur N. 73° 23' E. <sup>alt. Jan 73-74 = 3.354</sup> and 3.354 x 5 = 16.77 ch.



70.00 Foot of bluff. Offset as follows:  
 S. 10.00 chs.; thence on the offset line:  
 East 10.04 chs.  
 80.04 Enter set N. and S line 398 lbs. S. of witness cor. of srs. 10, 11, 14 and 15.

Shower & run from point 394 lbs. of W.C. to srs. 10, 11, 14 & 15.  
 S. 89° 59' N., 10.04 chs.; thence  
 North, 10.00 chs.; thence  
 S. 89° 59' N., on a true line bet. srs. 10 and 15.  
 Over mountainous land, ascending through dense brush.

22.00 West fork of Dry creek, 40 lbs. wide, course S. E.; ascend.  
 31.57 Set compass point for witness cor.  
 41.02 The point for 4 srs. cor. falls on face of bluff  
 48.34 Top of spur, extending N. E.; with heavy timber.

31.57

6 hrs

Set a sandstone, 18 x 8 x 4 ins. in a mound of stone for witness cor. to  $\frac{1}{4}$  sec. cor. marked N  $6\frac{1}{4}$  on N. face, from which

A pinon, 7 ins. diam., bears S.  $27\frac{3}{4}$  N., 24 lbs. dist., marked N  $6\frac{1}{4}$  S. 15 B.S.

A pinon, 5 ins. diam., bears N.  $51$  N., 47 lbs. dist., marked N  $6\frac{1}{4}$  S. 10 B.S. Thru along N. slope of mountain.

80.04 In cor. of secs. 9, 10, 15 and 16.

Low, mountainous.

Soil, stony and rocky, 4th rate.

Timber, pine, pinon, spruce and oak; undergrowth, algarrota and manzanita.

Mountains, heavily timbered or land covered with dense undergrowth, 80.04 chs.

March 24, 1905.

March 25. At 8<sup>h</sup> 34<sup>m</sup> a.m., l.m.t., & set off 31.54 N. on the lat. wire, 1'45" N. on the decl. arc, and determine a meridian with the solar at the cor. of secs. 9, 10, 15 and 16.

Thru & thru

N.  $0^{\circ}02'$  W., bet. secs. 9 and 10.

Over mountainous land, descending through pine timber.

3.80 Trail, bears E. and W.

4.00 West fork of Dry creek, 40 lbs. wide, course E., low pine timber and begin steep ascent through dense manzanita brush.

17.25 End of bluff, bears E. and W. offset as follows: East, 8.00 chs., thru, on the offset line. N.  $0^{\circ}02'$  W., 12.00 chs., thru

29.25 West, 8.00 chs., to true line.

Descending.

37.00 Gulch, 25 lbs. wide, course S. E.; ascend.

40.00 Set a sandstone, 18 x 10 x 8 ins., in a mound of stone for  $\frac{1}{4}$  sec. cor. marked  $\frac{1}{4}$  on N. face, and raise a mound of stone, 2 ft. base,  $1\frac{1}{2}$  ft. high, W. of cor. Pits impracticable.

82.00 Top, thru along E. slope of mountain.

80.00 Set a sandstone, 24 x 12 x 8 ins., 18 ins. in the ground, for cor. of secs. 3, 4, 9 and 10, marked with 5 notches on E.

6 hams  
 and 3 notches on E. edge from which  
 A spire, 10 ins. diam., bears S. 35° E., 35 lbs. dist., marked  
 S 18 N R 5 E S 10 B S.  
 A spire, 9 ins. diam., bears N. 25 1/4° E., 144 lbs. dist., marked  
 S 18 N R 5 E S 3 B S.; no other trees within limit; and  
 raise a mound of stone, 2 ft. base, 1 1/2 ft. high, W. of  
 cor. Pits impracticable.  
 Land, mountainous.  
 Soil, stony and rocky; 4th rate.  
 Timber, Pine; yellow sand spire; mangrovia, man-  
 granita.  
 Mountainous, or land covered with dense under-  
 growth, 80.00 lbs.  
 March, 25: At this cor. I set off 1° 48' N. in the decl  
 are; and, at 12<sup>h</sup> 5<sup>m</sup> l.m.t., observe the sun on the  
 meridian; the resulting lat. is 34° 54' N.

N. 89° 57' E., in a random line bet. secs. 3 and 10.  
 40.00 Set trap 1/4 sec. cor.  
 80.13 Enter set N. and S. line 8 lbs. S. of cor. of secs. 2, 3,  
 11 and 11.  
 Thomas Penn  
 S. 89° 54' N., in a line bet. secs. 3 and 10.  
 Along S. slope of mountain, through scattering  
 timber.  
 24.80 Resend.  
 31.00 Gulch, 700 ft. below sec. cor., 60 lbs. wide, course S. E.;  
 ascend through dense mangrovia brush.  
 31.80 Drift, bears N. W. and S. E.  
 40.06 1/2 Set on sandstone, 18 x 12 x 5 ins., 12 ins. in the ground,  
 for 1/4 sec. cor. marked 1/4 on N. face; from which  
 A spire, 12 ins. diam., bears S. 63° E., 6 lbs. dist., marked  
 1/4 S 10 B S.  
 A spire, 8 ins. diam., bears N. 51 1/2° W., 42 lbs. dist., marked  
 1/4 S 3 B S.  
 48.00 Gap, 600 ft. above gulch; bluffs on N. side 800 ft.  
 high, ascend.  
 52.30 Gulch, 30 lbs. wide, course S. E.; ascend.  
 80.13 A hr. cor. of secs. 3, 4, 9 and 10, 900 ft. above gulch.  
 Land, mountainous.  
 Soil, stony and rocky; 4th rate.

6 hours

Timber, scattering young pines, spruce, spruce and oak; undergrowth, manzanita.

Mountainous or hilly covered with dense undergrowth, 80.13 chs.

March, 25, 1905.

March 26. At 8:28<sup>am</sup> a.m. l.m.t. I set off 34°55' on the ~~line~~ <sup>line</sup> ~~arc~~ <sup>arc</sup> 2°05' N. on the decl arc, and determine a meridian with the solar at the cor. of sves. 3, 4, 9 and 10.

Shower of rain

N. 0°02' N. on a true line bet. sves. 3 and 4.

Along E. slope of mountain, through scattering timber and dense brush.

- 14.00 Gulch, 20 lbs. wide, course E. S. E.; ascend.
- 17.00 Spur extending E. E.; descend, through heavy timber.
- 25.30 Gulch, 20 lbs. wide, course N. W.; heavy dense brush and ascend.

41.00 Set a sandstone, 18 x 8 x 5 ins., 12 ins. in the ground, for  $\frac{1}{4}$  sec. cor. marked  $\frac{1}{4}$  on W. face, from which a pine, 24 ins. diam., bears N. 23° E., 49 lbs. dist., marked  $\frac{1}{4}$  S. 3 B S.

A pine, 18 ins. diam., bears N. 45 $\frac{1}{4}$ ° W., 86 lbs. dist., marked  $\frac{1}{4}$  S. 4 B S.

- 40.75 Spur, extending E.; descend.
- 52.50 Head of gulch, course E. E.; ascend.
- 63.20 Dip, bears N. W. and S. E.; descend.

73.30 ~~Set~~ <sup>Set</sup> a sandstone N. body of Spr. 8.16 chs. N. of <sup>withness</sup> cor. of sves. 35 and 36, Spr. 19 N., S. 5 E., which is a cross on a rock, with <sup>addition of all old markings</sup> ~~having~~ <sup>having</sup> ~~reference~~ <sup>reference</sup> T1811R5E.

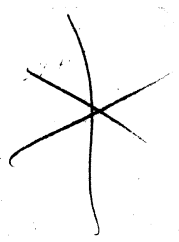
Set a sandstone, 18 x 8 x 6 ins., 12 ins. in the ground, for closing cor. of sves. 3 and 4, marked 66 on S.; with 3 grooves on E. and W. faces, from which a pine, 36 ins. diam., bears S. 38 $\frac{1}{4}$ ° E., 110 lbs. dist., marked S 18 N R 5 E 83 B S.

A pine, 12 ins. diam., bears S. 61 $\frac{1}{2}$ ° W., 33 lbs. dist., marked S 18 N R 5 E 84 B S.

Land, mountainous.

Soil, stony and rocky; 4th north.

Timber, pine, spruce and pine; undergrowth, manzanita.



6 chains

Mountains, heavily timbered or land covered with dense undergrowth, 73.30 chs.

From the cor. of secs. 28, 29, 32 and 33, on the sectional corner line, I run S. 11° 12' E., on a true line bet. secs. 32 and 33.

40.00

Over mountains land, ascending gradually along E. slope of road ridge, through heavy timber. Top of bluff.

Set a sandstone, 18 x 8 x 6 ins. 12 ins. in the ground, for  $\frac{1}{4}$  sec. cor. marked  $\frac{1}{4}$  on N. face. From which a pinon, 5 ins. diam., bears S. 38 $\frac{1}{2}$ ° E., 41 lbs. dist., marked  $\frac{1}{4}$  S. 33 B. S.

A pinon, 6 ins. diam., bears N. 25 $\frac{1}{2}$ ° W., 18 lbs. dist., marked  $\frac{1}{4}$  S. 32 B. S.; observed.

64.00

Foot, bears N. W. and S. E.; thence over gently rolling land.

65.90

Road, bears E. and W.

68.15

Dry wash, 40 lbs. wide, course E.

78.20

Dry wash, 15 lbs. wide, course S. E.

78.25

Intersect S. body of Sec. 133 lbs. E. of cor. of secs. 4 and 5, S. 17° N., R. 5 E., which is a conglomerate stone, 6 x 8 x 4 ins. above ground, marked and witnessed as described by the surveyor general. <sup>Selection all old markings having reference to T18 R5 E</sup>

Set a sandstone, 18 x 10 x 7 ins. 12 ins. in the ground, for closing cor. of secs. 32 and 33, marked  $\frac{1}{4}$  on N., with 4 pinons on E. and 2 pinons on W. face; from which

A pinon, 6 ins. diam., bears N. 29° E., 22 lbs. dist., marked S. 18 N. R. 5 E. S. 33 B. S.

X

A cedar, 12 ins. diam., bears N. 46 $\frac{1}{2}$ ° W., 90 lbs. dist., marked S. 18 N. R. 5 E. S. 32 B. S.

Land, mountains and gently rolling. Soil, sandy, gravelly and stony; 2nd, 3rd and 4th rate. Timber, pinon and cedar; undergrowth, vulgaris. Mountains or heavily timbered land, 78.25 chs.

March 26, 1905.

March 27: At 3:35<sup>m</sup> a.m., L.M.T., I set off 34° 52' on the lat. and 2° 32' N. on the decl. arc, and determined a true meridian with the solar at the cor.

Chains

of sves. 28, 29, 32 and 33 on this sectional correction  
line.

Planned & run

N. 11° 02' N. bet. sves. 28 and 29.

Over gently rolling land, through heavy timber.

3.50 Dry wash, 15 lbs. wide, course S. E.

20.00 Enter dense brush, bears N. W. and S. E.

23.00 Enter draw, course S. E.; heavy timber!

26.10 Dry wash, 40 lbs. wide, course S. S. E.

27.00 Leave draw and ascend.

40.00 Falls on sandstone tower, bearing N. and S. on which  
but a cross (x) at the exact or point, for  $\frac{1}{4}$  sec. cor.  
marked  $\frac{1}{4}$  on N. side of cross; from which  
A pinon, 8 ins. diam.; bears N. 88° E., 71 lbs. dist, marked  
 $\frac{1}{4}$  S 28 B S.

A pinon, 7 ins. diam. bears N. 82  $\frac{1}{4}$ ° N. 47 lbs. dist, marked  
 $\frac{1}{4}$  S 29 B S. and raised a mound of stone, 2 ft. base, 12  
ft. high, 6 lbs. N. of cor.

44.00 Foot of bluffs, 1000 ft. high, bears N. N. W. and S. S. E.  
Offset as follows.

West, 20.00 chs.; then on the offset line.

N. 0° 02' N., 40.75 chs.; then

East, 20.00 chs. to the true line, on which at

84.75 marked from sve cor.

but a cross (x) on N. face of bluff for witness cor. to  
cor. of sves. 20, 21, 28 and 29, marked with 2 note how  
~~the bluff extends East and West it is impossible to put ground~~  
~~from~~ and 4 note was on E. side of cross; and raised  
a mound of stone, 2 ft. base, 1  $\frac{1}{2}$  ft. high, 6 lbs. N. of  
cor. Pits impracticable.

From this <sup>cor</sup> narrow gap bears 100 lbs. E.; to N. and S.  
bluffs are 600 ft. high.

Land, mountains and gently rolling.

Soil, gravelly, stony and rocky; 4th water.

Timber, cedar and pinon. Undergrowth, algarovita.

Mountains, heavily timbered of lower order  
with dense undergrowth, 80.00 chs.

March, 27. At this cor. I set off 2° 35' N. on the  
dial. cor. and, at 12<sup>h</sup> 4<sup>m</sup> l. m. t. observe the sun  
on the meridian; the resulting lat. is 34° 53' N.

From witness cor. of sves. 20, 21, 28 and 29, I run

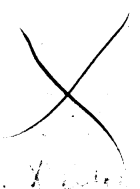


6 hours West, 28.00 chs.; then, on the offset line:  
 N. 0° 02' W., 30.00 chs.; then  
 East, 72.22 chs.; then  
 44.22 South 34.75 chs. to the random line  
 Set bench point for witness cor. to  $\frac{1}{4}$  sec. cor.  
 80.17 Enter west N. and S. line 6 lbs. N. of cor. of secs. 21, 22, 27  
 and 28.  
 Show & run  
 N. 89° 57' W., 110 on true line bet. secs. 21 and 28.  
 Over gently rolling land, through scattering timber and  
 dense brush.  
 13.00 Begin strip ascent.  
 35.95 Foot of bluffs, 600 ft. high, bears N. and S.  
 but a cross (x) on face of bluff for witness cor. to  $\frac{1}{4}$   
 sec. cor. marked N 6  $\frac{1}{4}$  on N. side of cross, from which  
 a pinion, 10 ins. diam., bears N. 45° E., 73 lbs. dist. marked  
 N 6  $\frac{1}{4}$  & 21 & S.; no other tree within limit, and raise  
 a mound of stone, 2 ft. base, 1  $\frac{1}{2}$  ft. high, N. of cor.  
 Pits impracticable.  
 Ground, mountainous and gently rolling.  
 Soil, sandy, gravelly, stony and rocky. 3rd and 4th  
 timber, scattering gum, cedar and pinon; 7 mormonite,  
 manganite and algarrota.  
 Mountains or land covered with dense mormonite,  
 80.17 chs.

March 27, 1905.

March 28: At 8<sup>28</sup> a.m. l.m.t., & set off 34.53 on  
 the lat. arc, 2° 55' N. in the decl. arc, and deter-  
 mine a meridian with the solar 20 lbs. N. of witness  
 cor. of secs. 20, 21, 28 and 29.  
 Show & run, from witness cor.  
 West, 28.00 chs.; then  
 N. 0° 02' W., 30.00 chs.; then  
 34.75 East, 28.00 chs. to true line; then  
 N. 0° 02' W., bet. secs. 20 and 21.  
 Descending along E. slope of mountain.  
 40.00 Set a sundstone, 18 x 10 x 8 ins., in a mound of stone,  
 for  $\frac{1}{4}$  sec. cor. marked  $\frac{1}{4}$  on N. face; and raise a  
 mound of stone, 2 ft. base, 1  $\frac{1}{2}$  ft. high, N. of cor. Pits  
 impracticable.

See June Note 3475  
 N 89° 57' W 110.00 - Dutton  
 and 89° 57' E 100.00 to W. L.  
 for sec. 21, 22, 27.



6 chains  
80.00

Small NW or sandstone ledge, bears NW. and S. W.,  
NW which  
but a cross (x) at the exact ev. point, for cor. of sec.  
16, 17, 20 and 21, marked with 3 notches on S. and 4  
notches on E. side of cross, and raised a mound of  
stone, 2 ft. base, 1 1/2 ft. high, N. of ev. Pits im-  
practicable.

Land, mountainous,  
Soil, stony and rocky; 4th water.  
Timber, scattering cedar and fir; undergrowth,  
Mangrove.

Mountainous land, 80.00 chs.  
March 23: At this ev. I set off 3' 01" N. on the steel  
arc; and, at 12<sup>h</sup> 5 m. l. m. r., observed the sun on the  
meridian; the resulting lat. is 34° 52', within  
0.4 of the proper lat.

40.00

S. 89° 57' E., NW or random line bet. secs. 16 and 21.

40.30

Set camp 1/4 sec. ev.  
Foot of bluff 1000 ft. high, bears N. N. W. and S. S. E.

Offset as follows from camp 1/4 sec. ev.

South, 26.00 chs.; then, on the offset line.

S. 89° 57' E., 60.00 chs.; then

North, 26.00 chs.; then

79.94

N. 89° 57' W. 79.94 chs., where I intersect N. and S. line

5 chs. S. of ev. of secs. 15, 16, 21 and 20. *Since June 589, 17 E 70 p 6*  
*thence South 26.00 chs. - hence N 89° 57' W - 60.03 chs. - thence North 26.00 chs. and at*  
*to corner & return to camp 1/4 sec. ev. and at 3 chs. N. of*

said point, establish permanent ev. as follows:

39.97

but a cross (x) on face of bluff, 4 ft. above ground,  
at the exact ev. point, for 1/4 sec. ev. marked 1/4 above  
cross, from which

A wooden 24 ins. diam., bears N. 75° W., 154 chs. dist, marked  
1/4 S 16 B D.

A pinon 6 ins. diam., bears S. 88° W., 79 chs. dist, marked  
1/4 S 21 B D., and raised a mound of stone, 2 ft. base, 1 1/2  
ft. high, 6 chs. S. of ev. This ev. stands 70 ft. in water  
on level 200 ft. high.

Shore & nm

N. 89° 59' W., on a true line bet. secs. 16, and 21.

Over mountainous land, descending through scattering  
timber and dense brush.

place mound North  
of corner

6 hours

72.00 Enter gulch, course S.  
78.00 Leave gulch and ascend.

79.94 Str. cor. of secs. 16, 17, 20 and 21.

Land, mountainous.

Soil, stony and rocky; 4th rate.

Timber, scattering cedar, pine and oak; undergrowth, manzanita and algarrota.

Mountains or land covered with dense undergrowth.

79.94 hrs.

March 28, 1905.

March 29: At 8:35 AM, a.m., l.m. t., I set off 34° 54' N the lat. ave; 3° 18' N. on the decl. ave; and determine a meridian with the solar at the cor. of secs. 16, 17, 20 and 21.

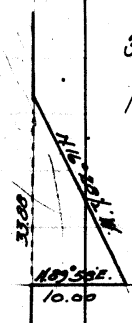
Then I run

N. 0° 02' W, bet. secs. 16 and 17.

Over mountainous land, descending through scattering timber and dense algarrota brush.

8.00 Enter gulch.

18.00 Leave gulch, course S. It being impracticable to chain from this point up broken slope of mountain I send flag runner to top on line and triangulate distance which is as follows: Run line N 89° 55' E - 10 cts. to line N 11° 28' W.



51.88 Top of mountain, 1000 ft. above gulch, course E. and W.

Set a white sandstone, 18 x 8 x 8 ins., in a mound of stone, for nitrous cor. to 1/4 sec. cor. marked N 6 1/4 W N. face, and raise a mound of stone, 2 ft. base, 1 1/2 ft. high, W. of cor. Rts. impracticable.

Over, over top of mountain through dense manzanita brush.

80.00 Set a sandstone, 20 x 12 x 4 ins., in a mound of stone for cor. of secs. 8, 9, 16 and 17, marked with 4 notches on S. and E. ridges; from which

A line, 12 ins. diam., course S. 9 3/4° W., up the dist. marked S 18 N R 5 E & 17 R 8. on which I set a witness line; and raise a mound of stone, 2 ft. base, 1 1/2 ft. high, W. of cor. Rts. impracticable.

Land, mountainous.

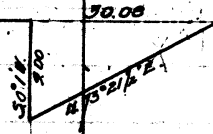
Soil, stony and rocky; 4th rate.

6 chains

Timber, scattering pine, fir and cedar; undergrowth, manzanita and sagebrush.  
 Mountains on land covered with dense undergrowth, 80.00 chs.  
 March 29: At this cor. & set off 3° 21' N. on the decl. one, and, at 12<sup>h</sup> 6<sup>m</sup> l. m. t. observe the sun on the meridian. The resulting lat. is 34° 53' or within 1° 4' of the former lat.

76.00  
 83.20

S. 89° 59' E., on a random line bet. surs. 9 and 16. Edge of bluff, bears N. W. and S. E. It being impracticable to chain over bluff, & some flags carried to foot of mountain ~~and~~ and triangulate distance ~~which is as follows. Run a line 0° 1' W. - 9.. chs. then leg N. 73° - 21 1/2' E. for 73 - 20 1/2 = 3.342~~ ~~at 3.342 x 9.. = 30.981 chs.~~  
 Foot of mountain. Set 2 m. point for witness cor. to 1/4 sec. cor.



56.19

79.88

Enter set N. and S. line 6 chs. N. of cor. of surs. 9, 10, 15 and 16.

73.80  
 82.00

Plum & run  
 N. 89° 56' W., on a true line bet surs. 9 and 16.  
 Over mountainous land, ascending through heavy timber. Set a sandstone, 20 x 10 x 8 ins., in a mound of stone, for witness cor. to 1/4 sec. cor. marked N 6 1/4 on N. face; from which

39.94

A firm 6 ins. diam., bears N. 34 1/2° W. 62 chs. dist., marked N 6 1/4 S 9 B D; no other tree available, and raise a mound of stone, 2 ft. base, 1 1/2 ft. high, N. of cor. Bits impracticable. Grow heavy timber.

46.20

Top of rim, 800 ft. above sec. cor.; thence over top of mountain.

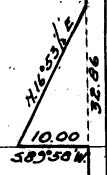
53.00  
 79.88

Bluff. Set cor. of surs. 8, 9, 16 and 17.  
 Land, mountainous.  
 Soil, stony and rocky; 4th rate.  
 Timber, pine, fir and spruce; undergrowth, manzanita.  
 Mountains or heavily timbered land, 79.88 chs.

N. 0° 02' N., bet. surs. 8 and 9.  
 Along top of mountain, through scattering timber and dense brush.



6 hours  
14.70  
15.00  
47.86



Edge of bluff, 800 ft. high. & some flag across dry  
valley canyon to N. station line and Abingdon to dis-  
tance 7 1/2 miles follows: Run a line S 90° 55' W to the flag at 7 1/2 miles  
Set a sandstone, 211 x 8 x 6 ins, in a mound of stone, for  
witness cor. to 1/4 sec. cor. marked N 6 1/4 on N. face and  
raise a mound of stone, 2 ft. base, 1 1/2 ft. high, N. of cor.  
Pits impracticable.

Ascending.

- 49.00 Spruce, standing S. E., descend.
- 53.00 Gulch, 15 lbs. wide, course S. E. ascend.
- 64.20 Ridge, bears N. W. and S. E.; descend.
- 77.50 Gulch, 30 lbs. wide, course S. W.; ascend.
- 80.00 Set a marble stone, 24 x 8 x 6 ins, in a mound of stone,  
for cor. of secs. 4, 5, 8 and 9, marked with 5 notches on  
S. and 4 notches on E. edge; from which  
A pin, 8 ins. diam., bears N. 32 1/2° E., 63 lbs. dist., marked  
S 18 N R 5 E 8 4 B S.  
A pin, 30 ins. diam., bears S. 3° E., 84 lbs. dist., marked  
S 18 N R 5 E 8 9 B S.  
A pin, 20 ins. diam., bears S. 82 3/4° W., 32 lbs. dist., marked  
S 18 N R 5 E 8 8 B S.  
A pin, 36 ins. diam., bears N. 73 1/4° W., 125 lbs. dist., marked  
S 18 N R 5 E 8 5 B S.

Land, mountains.

Soil, stony and rocky; 4th rate.

Timber, pine, fir, spruce and oak; undergrowth,  
manganite.

Mountains or land covered with dense undergrowth,  
80.00 hrs.

March 29, 1905.

March 30: At 8<sup>h</sup> 25<sup>m</sup> a.m. l.m. 4. & set off 34° 55' in the  
lat. arc; 3° 42' N. in the decl. arc; and determined  
a meridian with the solar at the cor. of secs. 4, 5, 8  
and 9.

Shower & rain

S. 59° 56' E., in a random line bet. secs. 4 and 9.

- 40.00 Set trip. 1/4 sec. cor.
- 79.90 Enter set N. and S. line 12 lbs. S. of cor. of secs. 3, 4, 9  
and 10.  
Shower & rain

- 6 hrs. *algarruta* brush.
- 20.00 Enter ~~Bonita~~ <sup>Bonita</sup> canyon, course S.
- 22.00 Dry wash, 30 lbs. wide, course S.; lower canyon and ascend.
- 39.98 1/2 *Agate* sandstone, 18 x 8 x 6 ins., in a mound of stone for 1/4 sec. cor. marked 1/4 on N. face. From which a jasper, 10 ins. diam., bears South, 32 lbs. dist. marked 1/4 S 29 B.S.
- A jasper, 4 ins. diam., bears N. 53 1/4 W. 20 lbs. dist. marked 1/4 S 20 B.S.; and raise a mound of stone, 2 ft. base, 1 1/2 ft. high, N. of cor.
- 40.85 South of bluff, 500 ft. high, bears N. and S. Offset North, 5.00 chs.; then on the offset line N. 89 1/2 W. 20.00 chs.; then South, 5.00 chs. to the true line.
- 20.85 Descending.
- 62.00 bush, 30 lbs. wide, course S.; begin steep ascent through dense *manzanita* brush.
- 79.97 1/2 for cor. of ores. 19, 20, 29 and 30. Ground, mountainous and brush. Soil, gravelly stony and rocky; 3rd and 4th rates. Timber, scattering cedar, jasper, fir, pine and oak; *manzanita*, *manzanita* and *algarruta*. Mountainous in land covered with dense *manzanita*, 79.97 chs.

March 31, 1915.

- Which 1: At 8:04<sup>am</sup> a.m. l.m.t., I set off 34° 53' 21" in the lat. are. 4° 28' N. in the circ. are. and determine a meridian with the solar at the cor. of ores. 19, 20, 29 and 30.
- From this cor. I run South, 30.70 chs.; then West, 15.00 chs.; then North, 30.70 chs.; then S run West, on a true line but ores. 19 and 30.
- Descending along S. slope of mountain.
- 18.00 Head of gulch, course S.; ascend.
- 40.00 Falls on a blanket fold of sandstone, on which but a cross (x) at the exact or point for 1/4 sec. cor. marked 1/4 on N. side of cross; and raise a mound



6 hrs

Log across arch on line and triangular distance  
~~which is same as~~  $89^{\circ}57'N - 4.00$  Chs. to base of  $72^{\circ}11'E$   
~~Set on 6:49 = 2.574 and 2.574 x 4 = 10.296~~

69.00

70.30

Set on prompt on line.  
 Foot of bluffs 800 ft. high, base E. and W.  
 Set on sandstone, 15 x 12 x 5 ins., 12 ins. in the ground,  
 for witness cor. of secs. 17, 18, 19 and 20, marked N 6  
 on N. face, with 3 notches on S. and 3 notches on E.  
 edge, from which  
 A cedar, 14 ins. diam., bears  $N. 89^{\circ}E$ , 8 lbs. dist., marked  
 $S 18 N R 5 E S 20 T 8 S$ .  
 A cedar, 12 ins. diam., bears  $S. 58^{\circ} \frac{3}{4} N$ , 12 lbs. dist., marked  
 $S 18 N R 5 E S 19 T 8 S$ .  
 A cedar, 10 ins. diam., bears  $N. 55^{\circ} \frac{3}{4} W$ , 7 lbs. dist., marked  
 $S 18 N R 5 E S 19 T 8 S$ ; no other trees within limit, and  
 rising a number of stones, 2 ft. base, 1 1/2 ft. high, W. of cor.  
 its impracticable.

80.00

Soil, stony and rocky; 4th rate.  
 Timber, scattering cedar, pine, pine, maple and oak,  
 undergrowth, juniper and algaroba.  
 Mountains or land covered with dense undergrowth,  
~~70.30~~ ~~80.00~~ chs.

April 1: At this cor. I set off  $4^{\circ} 31' N$  on the arch  
 cor. and, at 12<sup>h</sup> 3<sup>m</sup> l. m. t., observed the sun on the meri-  
 dian; the resulting lat. is  $34^{\circ} 52' N$  within 0.4 of the  
 proper lat.

From the witness cor. I returned to point set at 60.00  
 chs., and run  
 $S. 89^{\circ}57'E$ , 17.00 chs.; then  
 offset North 20.00 chs. to the random line, slamed  
 $S. 89^{\circ}57'E$  on a random line bet. secs. 17 and 20.

40.00

80.00

Set temp.  $\frac{1}{4}$  sec. cor.  
 Intersect N. and S. line 7 lbs. S. of cor. of secs. 16,  
 17, 20 and 21.

Thinner & run  
 Rest on same line bet. secs. 17 and 20.  
 Over mountainous land, ascending through scat-  
 tering timber and dense brush.

31.30

Narrow gap in rocky ridge; bluffs 400 ft. high, on  
 both sides of line, ascend along foot of rock sandstone  
 bluffs 800 ft. high.

1821-117  
 1830  
 37977



Subdivision of S 18 N., R. 5 E.

37.00 Board of gulch, 400 ft. deep, across S.  
 40.03 Set a sandstone, 20 x 10 x 5 ins. in a mound of stone, for  $\frac{1}{4}$  sec. cor. marked  $\frac{1}{4}$  on N. face; and raise a mound of stone, 2 ft. base,  $1\frac{1}{2}$  ft. high, N. of cor. Pits impracticable.  
 47.00 Foot, across N. and S.; ascend.  
 63.06 Offset South, 20.00 chs.; then, on the offset line.  
 80.06 West, 17.00 chs., intersect line bet. secs. 19 and 20 at point 60.00, 10.30 chs. S. of witness cor. of secs. 17, 18, 19 and 20.  
 Land, mountainous.  
 Soil, stony and rocky; 4th rate.  
 Timber, scattering cedar and pine; undergrowth, manzanita and Yucca.  
 Mountains or land covered with dense undergrowth, 80.06 chs.

April 1, 1915

April 2: At 8:30 a.m. l.m.t. I set off 34.50 on the lat. arc, 4.51 N. on the decl. arc and determine a meridian with the solar at the witness cor. of secs. 17, 18, 19 and 20.

Then I return to point 69.00, previously set on line and run as follows:

- West, 3.00 chs.; then
- South, 5.00 chs.; then
- West, 10.00 chs.; then
- North, 6.00 chs.; then
- West, 17.00 chs.; then

30.00 North, 10.00 chs. to line, then West, on a true line bet. secs. 18 and 19.

Descending through scattering timber and dense brush.

40.00 Set a sandstone, 18 x 10 x 5 ins. in a mound of stone, for  $\frac{1}{4}$  sec. cor. marked  $\frac{1}{4}$  on N. face; from which I pin a, 12 ins. diam, brass S. 49  $\frac{3}{4}$  E., 106 lbs. dist, marked  $\frac{1}{4}$  S 19 or S. no other tree within sight, and raise a mound of stone, 2 ft. base,  $1\frac{1}{2}$  ft. high, N. of cor. Pits impracticable.

- 41.70 Ruins of old stone cabin, over 40 chs. N.
- 46.00 Gulch, 40 chs. wide, across S. S. E.; ascend.
- 76.00 Foot of white sandstone bluff, 800 ft. high.

6 hours

at the corner point of ...  
 cut a cross (x) on face of bluff, 5 ft. above ground  
 for witness cor. to closing cor. of sves. 18 and 19  
 marked N 6 above, 6 below, with 3 grooves on  
 N. and S. sides of cross; and raise a mound of  
 stone, 3 ft. base, 2 ft. high, E. of cor.

Land, mountains.

Soil, stony and rocky; 4th rate.

Timber, scattering cedar, pine, spruce and oak,  
 yew, juniper, mountain

Mosses or lichen coverd with dense under-  
 growth, 76.111 chs.

April 2: At the witness cor. of sves. 17, 18, 19 and  
 20, I set off 4.54' N. on the decl. arc; and, at  
 12.4 m. l. m. t., observe the sun on the meridian,  
 the resulting lat. is 34° 54' N, or within 0.4 of the  
 proper lat.

From witness cor. of sves. 17, 18, 19 and 20, I return  
 to point previously set at 6.00 chs. and offset  
 East, 17.00 chs.; then on the offset line:

N. 0° 03' W., 40.00 chs.; then

20.00 West, 17.00 chs. to true line. Shower

N. 0° 03' W., but sves. 17 and 18.

Along E. slope of mountain, over broken ground.

32.00 Spruce, extending E.; observed.

40.00 Falls on a white sandstone ledge, bearing N. and  
 S. W., on which

cut a cross (x) at the exact w. point for  $\frac{1}{4}$  sec  
 cor. marked  $\frac{1}{4}$  on W. side of cross; and raise a  
 mound of stone, 2 ft. base, 1 1/2 ft. high, W. of cor.  
 Pits impracticable.

49.00 Head of gulch, course S. E.; ascend.

64.00 Top of mountain.

80.00 Set a white sandstone, 24 x 12 x 8 ins., in a mound  
 of stone for cor. of sves. 7, 8, 17 and 18, marked with  
 4 notches on S. and 5 notches on E. edge, and raise  
 a mound of stone, 3 ft. base, 2 ft. high, W. of cor.  
 Pits impracticable.

Land mountains.

Soil stony and rocky; 4th rate.

Timber, scattering pine and spruce; yew, juniper,

Chains

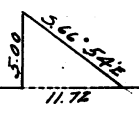
mangamito.  
 Mountains land, 80.00 chs.  
 At this point I abandoned the line N. on account of rough mountains and deep canyons over which it is impracticable to extend the line.  
 April 2, 1905.

April 3: At 8<sup>h</sup> 45<sup>m</sup> a.m. l.m.t., I set off 34° 54' on the lat. arc; 5° 17' N. on the decl. arc, and determined meridian with the solar at the cor. of sres. 7, 8, 17 and 18.

Thence I run

East, on a random line bet sres. 8 and 17.

- 35.110 Surf of bluffs. I sand flag around to point on line at foot of bluffs and triangulate distance, which is  $2.344 \times 5 = 11.72$  Chs.
- 46.72 Set temp. 4 sres. cor.
- 80.10 Enter set N. and S. line 2 lts. N. of cor. of sres. 8, 9, 16 and 17.



Thence I run

N. 89° 59' N., on a true line bet sres. 8 and 17.

Over top of mountain, through scattering timber and dense mangamito brush.

- 20.00 Begin ascent.
- 29.50 Gully, 40 lts. wide, course S. S. W.; ascend.
- 36.55 Set a white sandstone, 18 x 10 x 6 ins., in a mound of stone for witness cor. to 1/4 sres. cor. marker N 6 1/4 on N. face, and raise a mound of stone, 2 ft. base, 1 1/2 ft. high N. of cor. Site impracticable.
- 40.05 Set on top face of bluff.
- 45.00 Surf. of bluffs, bear N. and S.
- 80.10 Set cor. of sres. 7, 8, 17 and 18.

Land, mountains and byking.  
 Soil, stony and rocky; 4th rate.

Timber, scattering Fir and Pine; undergrowth, mangamito.

Mountains, or land covered with dense undergrowth, 80.10 chs.

April 3: At this pt. I set off 5° 17' N. on the decl. arc, and, at 12<sup>h</sup> 6<sup>m</sup> l.m.t. observe the sun on the meridian; the resulting lat. is 34° 54'

6 chains

BOOK 1821

Nest, on a line bet. secs. 7 and 18. Along S. slope of mountain, through green hemlock timber and dense manzanita brush.

40.00 Set a white sandstone, 20 x 14 x 10 ins. in a mound of stone, for  $\frac{1}{4}$  sec. cor. marked  $\frac{1}{4}$  on N. face; from which

A pinion, 7 ins. diam. bears N. 10° E., 25 lbs. dist. marked  $\frac{1}{4}$  S 7 B. No other tree within limits, and raise a mound of stone, 2 ft. base, 1 1/2 ft. high, N. of cor. It is impracticable.

77.45 Intersect N. edge of Spr. 201 lbs. S. of cor. of secs. 7, 12, as heretofore described.

Set a sandstone, 18 x 12 x 10 ins. in a mound of stone, for closing cor. of secs. 7 and 18, marked 6 on E.; with 4 grooves on S. and 2 grooves on N. face; and raise a mound of stone, 3 ft. base, 2 ft. high, E. of cor. It is impracticable.

Ground, mountainous and broken.

Soil, stony and rocky; 4th rate.

Timber, scattering pinon and fir; undergrowth, manzanita.

Mountains or land covered with dense undergrowth, 77.45 chs.

April 13, 1905.

Note: I have destroyed all cor. established on the subdivision lines of this Sp. by Deputy Harbert B. Maxson.

General Description.

This Sp. is extremely rough and mountainous. The soil is mostly stony and rocky, of the 4th rate. There is considerable timber in this Sp. There is no permanent running water. There are no salt flats in this Sp. The subdivisions of this township were discontinued on account of very rough mountains and deep canyons.

Edgar H. Dietrich

W. S. Deputy Surveyor.

Retracement of North Bdy T17N R5E

From the corner of Twp 17 & 18 N. R. 4 & 5 E  
as previously described I run East on  
the North Boundary of T17N R5E. between  
secs 6 and 31

39.93 I fall 22 lks N. of 1/4 cor of secs 6 & 31  
marked and witnessed as described by the  
Surveyor-General

79.26 I fall 43 lks N. of cor. of secs 5-6-31-32  
36.00  
50.30  
marked and witnessed as described by the  
Surveyor-General. This gives a course for  
this mile of S 89°-41' E.

From the old corner of sec 5-6-31-32  
I run East between sec. 5 and 32

37.57 I fall 21 lks N. of 1/4 cor of sec 5 & 32  
marked and witnessed as described  
by the Surveyor-General.

77.47 I fall 42 lks N. of old corner of  
37.57  
39.90  
77.47  
secs. 4-5-32-33 marked and witness-  
ed as described by the Surveyor-Gen-  
eral. This gives a course for this  
mile of S. 89°-42' E.

Edgar G. Dietrich  
U. S. Deputy Surveyor



LIST OF NAMES.

A list of the names of the individuals employed by Edgar C Dietrich  
....., United States Deputy Surveyor, to assist in running, measuring, and  
marking the lines and corners described in the foregoing field notes of the survey of

The Submission Lines of T 18 N, R 5 E.

showing the respective capacities in which they acted:

- John M. Trayer, Chairman.
- William A. Morris, Chairman.
- Charles Pogue, Moundman.
- ....., Moundman.
- William M. Ware, Axman.
- Sra Owenby, Axman.
- Fred E. Miller, Flagman.

FINAL OATH OF ASSISTANTS.

We hereby certify that we assisted Edgar C Dietrich  
....., United States Deputy Surveyor, in surveying all

parts or portions of the

Submission Lines of T 18 N, R 5 E.

..... of the Gila and  
U River Base meridian, Territory of Arizona, which are represented  
in the foregoing field notes as having been surveyed by him and under his direction; and that said survey  
has been in all respects, to the best of our knowledge and belief, well and faithfully surveyed, and the  
corner monuments established, according to the instructions furnished by the United States Surveyor

General for

Arizona

- John M. Trayer, Chairman.
- W A Morris, Chairman.
- Charles Pogue, Moundman.
- ....., Moundman.
- W M Ware, Axman.
- Sra Owenby, Axman.
- Fred E. Miller, Flagman.

Subscribed and sworn to before me this Third  
day of April, 1905



Edgar C. Dietrich  
U. S. Deputy Surveyor

No notary-public available.

I, Edgar C Dietrich, United States Deputy Surveyor, do solemnly swear that, in pursuance of a contract received from Frank S. Ingalls, United States Surveyor General for Arizona, bearing date of the 15 day of September, 1904, I have well, faithfully, and truly, in my own proper person, and in strict conformity with the instructions furnished by the United States Surveyor General for Arizona, the Manual of Surveying Instructions, and the laws of the United States, surveyed all those parts or portions of

The Subdivision Lines of T. 18 N., R. 5 E.

of the Gila and Salt River Basins Meridian, in the Territory of Arizona, which are represented in the foregoing field notes as having been surveyed by me, and under my direction; and I do further solemnly swear that all the corners of said survey have been established and perpetuated in strict accordance with the Manual of Surveying Instructions, and the special written instructions of the United States Surveyor General for Arizona, and in the specific manner described in the field notes, and that the foregoing are the original field notes of such survey.

Edgar C. Dietrich  
United States Deputy Surveyor.

Subscribed by said Edgar C. Dietrich, and sworn to before me }  
this 11<sup>th</sup> day of July, 1905

Frank S. Ingalls  
U.S. Surveyor General



No notary public available  
APPROVAL.

OFFICE OF THE UNITED STATES SURVEYOR GENERAL,

Phoenix, A.T. July 25<sup>th</sup> 1905

The foregoing field notes of the survey of the subdivisional lines of T. 18 N. R. 5 E., of the Gila and Salt River Basin and Meridian, in the territory of Arizona

executed by Edgar C. Dietrich, D.S. under his contract No. 123, dated September 15<sup>th</sup>, 1905, having been critically examined, and the necessary corrections and explanations made, the said field notes, and the surveys they describe, are hereby approved.

Frank S. Ingalls  
United States Surveyor General.

I certify that the foregoing transcript of the field notes of the above-described surveys in \_\_\_\_\_, has been correctly copied from the original notes on file in this office.

\_\_\_\_\_  
United States Surveyor General.

6.000  
S 89° 59' W, on a line bet. secs. 4 and 9.  
Over mountainous land, ascending through scattering  
timber and dense mangrove brush.

13.30 Top, bears N. and S.

16.000 Descend.

39.95 Set a malpais stone, 30 x 10 x 6 ins. in a mound of stone,  
for  $\frac{1}{4}$  sec. cor. marked  $\frac{1}{4}$  on N. face, from which  
a pin, 40 ins. diam., bears N. 50° E, 12 lbs. dist., marked  
 $\frac{1}{4}$  S 4 B S.

A pin, 12 ins. diam., bears S. 42° W, 100 lbs. dist., marked  
 $\frac{1}{4}$  S 9 B S.

57.40 Gulch, 40 lbs. wide, course S. S. W.; ascend.

63.000 Top, bears N. W. and S. E.

73.50 Descend.

77.90 Gulch, 15 lbs. wide, course S. E.; ascend.

79.90 Str. cor. of secs. 4, 5, 8 and 9.

Comp. mountains.

Soil, stony and rocky; 4th rate.

Timber, pine, fir and oak; mangrove brush,  
mangrove.

Mountainous or land covered with dense mangrove  
growth, 79.90 chs.

March 30. At this cor. I set off 3° 45' N. on the decl.  
arc; and, at 11<sup>h</sup> 58<sup>m</sup> A. M., observed the sun on the  
meridian; the resulting lat. is 34° 55' N.

N. 0° 02' W, on a line bet. secs. 4 and 5.

Over mountainous land, ascending through heavy  
timber.

3.50 Gulch, 15 lbs. wide, course S. W.

23.30 Top, bears N. W. and S. W.

29.40 Descend.

35.80 Gulch, 10 lbs. wide, course N. W.; ascend.

39.30 Top, bears N. W. and S. W.

40.000 Set a sandstone, 18 x 10 x 8 ins., 12 ins. in the ground,  
for  $\frac{1}{4}$  sec. cor. marked  $\frac{1}{4}$  on N. face, from which  
a pin, 12 ins. diam., bears N. 22 $\frac{3}{4}$ ° E, 29 lbs. dist., marked  
 $\frac{1}{4}$  S. 4 B S.

A pin, 20 ins. diam., bears N. 53 $\frac{1}{2}$ ° W, 26 lbs. dist., marked  
 $\frac{1}{4}$  S 5 B S.

43.00 Descend.

6 hms  
53.20 Gulch, 10 lbs. wide, course N. N. W.; ascend.  
59.30 Top, bars N.W. and S.E.  
60.80 Descend.  
63.30 Gulch, 10 lbs. wide, course S. W.; ascend.  
73.20 Entrance N. bdy. of Sp. 18.20 chs. W. of cor. of sves.

34 and 35, S 18 N., R. 5 E. *as witnessed and described by the Surveyor General & destroyed all old markings having reference to T187R5E and*  
Set on sandstone, 24 x 8 x 6 ins., in or in front of strand for closing cor. of sves. 4 and 5, marked 66 on S.; with 4 grommes in E. and 2 grommes in W. face; from which

A pin, 20 ins. diam., bears S. 52 1/2° E., 17 lbs. dist., marked S 18 N R 5 E S 4 B S.

A pin, 30 ins. diam., bears S. 64 1/2° W., 29 lbs. dist., marked S 18 N R 5 E S 5 B S.

Land, mountains.  
Soil, stony and rocky; 4th rate.  
Timber, Spruce, Spruce Cedar etc.  
Mountains or heavily timbered land, 73.20 chs.  
March 30, 1905.

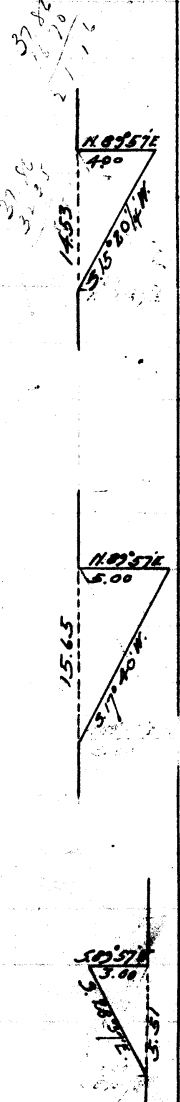
March 31: At 8<sup>h</sup> 31<sup>m</sup> a.m. l.m.t., I set off 34° 52' on the lat. arc; 4° 05' N. on the decl. arc; and determine a meridian with the solar at the witness cor. of sves. 29, 30, 31 and 32, on the sectional correction line.

From the witness cor. I send flag around to top of bluffs (S.) on line and triangulate distance, which is as follows: Run 79° 57' E. - 500' to base of Bluffs when flag is set. Then 74° 46' W. - 3.833' and 3.633' x 4 = 14.53'.

14.53 Rocky ridge, bars N.W. and S.E. 500 ft. above witness cor. Offset 162 lbs. West to line.  
Pin & iron  
S. 0° 03' E., on a true line bet. sves. 31 and 32.  
Descending.

16.70 Edge of gulch, 400 ft. deep, course S. E. Send flag around N. to point on line and triangulate distance which is as follows: Run 79° 57' E. - 500' to base of Bluffs when flag is set. Then 74° 46' W. - 3.833' and 3.633' x 4 = 14.53'.

32.35 Top of red sandstone ridge, 600 ft. above gulch bears N. W. and S. E. It being impracticable to chain down over the rocks, I send the flag around east to ft. of bluffs and triangulate the distance, which is as follows: Run 79° 57' E. - 500' to base of Bluffs when flag is set. Then 74° 46' W. - 3.833' and 3.633' x 4 = 14.53'.





- 6 hrs  
37.86 East, bears E. and W. thence over gently rolling land, through scattering cedar and dense brush.
- 40.00 Set a sandstone, 18 x 16 x 6 ins. 12 ins. in the ground for  $\frac{1}{4}$  sec. cor. marked  $\frac{1}{4}$  on W. face; from which a cedar, 10 ins. diam, bears N. 52 $\frac{1}{2}$  E., 234 lbs. dist, marked  $\frac{1}{4}$  S 32 B S. no structure within limit, and visible a mound of stone, 2 ft. base, 1 $\frac{1}{2}$  ft. high, N. of cor.
- 47.00 Dry wash, 30 lbs. wide, course W.; as usual.
- 48.70 Road, bears N. and S. W.
- 78.20 Entered S. bay of Spr. 159 lbs. N. of cor. of sres. 5 and 6, S. 17 W., R. 5 E., which is a sandstone, 6 x 6 x 8 ins. above ground, marked and witnessed as described by the surveyor general. I destroy marks on bearing tree referring to S. 18 N., R. 5 E. Set a sandstone, 18 x 11 x 8 ins. in a mound of stone, for closing cor. of sres. 31 and 32, marked 66 on N., with 5 grooves on E. and 1 groove on W. face; from which a cedar, 6 ins. diam, bears N. 74 $\frac{1}{2}$  W., 217 lbs. dist, marked S 18 N R 5 E S 31 B S.
- A pinon, 6 ins. diam, bears N. 27 $\frac{1}{2}$  E., 152 lbs. dist, marked S 18 N R 5 E S 32 B S.
- Land, mountains, and gently rolling. Soil, sandy, gravelly, strong and one by road and 4th. water. Timber, scattering pinon and cedar; more growth, algaroba and juniper.
- Mountains on land covered with dense undergrowth, 78.20 chs.
- From witness cor. of sres. 29, 30, 31 and 32, in sectional correction line, I offset as follows:  
East, 10.00 chs.; then  
N. 0 $^{\circ}$  03' W., 16.00 chs.; then  
16.00 West, 17.32 chs. to true line; then  
N. 0 $^{\circ}$  03' W., bet. sres. 29 and 30.
- Descending along E. slope of mountain, through scattering timber and dense brush.
- 25.00 Set a 30 lbs. wide, course S. S. E.
- As usual.
- Low sandstone bluff, 50 ft. high, bears N. N. W. and

Subdivision of S 18 N, R. 5 E.

6 hours

S. S. E.  
 Set a sandstone, 18 x 12 x 4 ins., 12 ins. in the ground,  
 for nitrous cov. to 1/4 sec. cov. marked N 6 1/4 ~~sec. cov.~~  
~~marked N 6 1/4 on N. face.~~ from which  
 a rod, 10 ins. diam., bears S. 44 1/2 E., 94 lbs. dist., marked  
 N 6 1/4 S 29 B S; no other trace, and raise a mound of  
 stone, 2 ft. base, 1 1/2 ft. high, N. of cov. pits impracticable.  
 The point for 1/4 sec. cov. falls on bluff.  
 From the nitrous cov. I offset  
 West, 7.00 chs.; then, up the offset line.  
 N. 0° 03' W., 10.00 chs.; then

49.30

East, 7.00 chs. to the tower line.  
 Descending along E. slope of mountain through dense  
 mangrove brush.

80.00

Set a sandstone, 20 x 10 x 8 ins., 15 ins. in the ground,  
 for cov. of secs. 19, 20, 29 and 30, marked with 2 notches  
 on S. and 5 notches on E. side, and raise a mound of  
 stone, 3 ft. base, 2 ft. high, N. of cov. pits impracticable.  
 From this cov. white sandstone bluffs, 800 ft. high,  
 bear 5.00 chs. N.

Land, mountains.  
 Soil, gravelly, stony and rocky; 3rd and 4th water.  
 Timber, scattering cedar, pine, and oak; under-  
 growth mangrove and algarroba.  
 Mountains or land covered with dense mangrove,  
 80.00 chs.

March 31: At this cov. I set off 4005' N. on the dial  
 cov. and, at 12<sup>h</sup> 00<sup>m</sup> l. m. t., I observe the sun on the  
 meridian; the resulting lat. is 34° 54' N. within  
 1/2" of the proposed lat.

41.00

East on a tower line bet. secs. 20 and 29, making  
 due offsets

79.97

Set a tower 1/4 sec. cov.  
 Enter set N. and S. line 8 lbs. N. of nitrous cov. of secs.  
 20, 21, 23 and 29.

12.00

Plum & ram, from nitrous cov.  
 N. 89° 57' W. 12.00 chs.; then  
 Offset south, 4.75 chs. to tower line. Plum & ram  
 N. 89° 57' W., on a tower line bet. secs. 20 and 29.  
 Over mountainous land, descending through dense