

-1838-

Book "D"

FIELD NOTES

OF THE SURVEY OF THE

BOOK 1838

Subdivisional Lines

of
South Eighteen
Sections

T 9 S, R. 16 E.

-1838-

1838

Of the *Blue + South River Base* Meridian,
Arizona

AS SURVEYED BY

William B. Dyar, United States Deputy Surveyor,

Under his Contract No. *117*, dated *June 13* ¹⁹⁰⁴ ~~189~~

Survey commenced *July 15* ¹⁹⁰⁴ ~~189~~

Survey completed *October 25* ¹⁹⁰⁴ ~~189~~

7/11/05
Sept. 28
Mar. 21/05
1905
87

1A

NAMES AND DUTIES OF ASSISTANTS.

*See Report F
Duty. T. D. R. B.*

BOOK 1838

INDEX DIAGRAM.

Township 9 S, Range 16 E

6	5	4	3	2	1					
7	8	9	10	11	12					
18	17	16	15	14	13					
26+27	26	20	15+16	11	5+6					
19	25	20	19	21	14+15	22	10	23	5	24
24+25	24	18+19			9				4	
30	23	29	16	28	14	27	8, 9	26	3	25
22+28	21+22	17+18			13		7+8		2+3	
31	21	32	16+17	33	12	34	6+7	35	2	36

Meanders Page.....

PRELIMINARY OATHS OF ASSISTANTS.

"J"

WE, _____ and _____

do solemnly swear that we will well and faithfully execute the duties of chainmen; that we will level the chain over even and uneven ground, and plumb the tally pins, either by sticking or dropping the same; that we will report the true distances to all notable objects, and the true lengths of all lines that we assist in measuring, to the best of our skill and ability, and in accordance with instructions given us, in the survey of _____

See Book 1838 p. 1-10

_____, Chainman.

_____, Chainman.

Subscribed and sworn to before me this _____ day of _____, 189 _____



"J"

WE, _____ and _____

do solemnly swear that we will well and truly perform the duties of moundmen in the establishment of corners, according to the instructions given us, to the best of our skill and ability, in the survey of _____

See

_____, Moundman.

_____, Moundman.

Subscribed and sworn to before me this _____ day of _____, 189 _____



"J"

WE, _____ and _____

do solemnly swear that we will well and truly perform the duties of axmen in the establishment of corners and other duties, according to instructions given us, to the best of our skill and ability, in the survey of _____

See

_____, Axman.

_____, Axman.

Subscribed and sworn to before me this _____ day of _____, 189 _____



"J"

I, _____, do solemnly swear that I will well and truly perform the duties of flagman according to instructions given me, to the best of my skill and ability, in the survey of _____

See

_____, Flagman.

Subscribed and sworn to before me this _____ day of _____, 189 _____



Survey commenced Oct. 5th, 1904, and executed with a Young & Sons Ligh Mountain Transit No. 7520; the horizontal limb having two double verniers placed opposite each other and reading to single minutes of arc, which is also the least reading of the declination and latitude arcs.

At the cor. of secs. 35 and 36, previously established by me in Lat. $32^{\circ} 37' 43''$ N., long. $110^{\circ} 40' 1''$ W. at 3 h. 30 m., p.m., l.m.t., I set off $32^{\circ} 38'$ N. on the lat. arc, $4^{\circ} 49'$ S. on the decl. arc., determine a meridian with the solar and ^{mark a} point thereof by a tack driven in a stake set firmly in the ground about 5 ch. N. of my station.

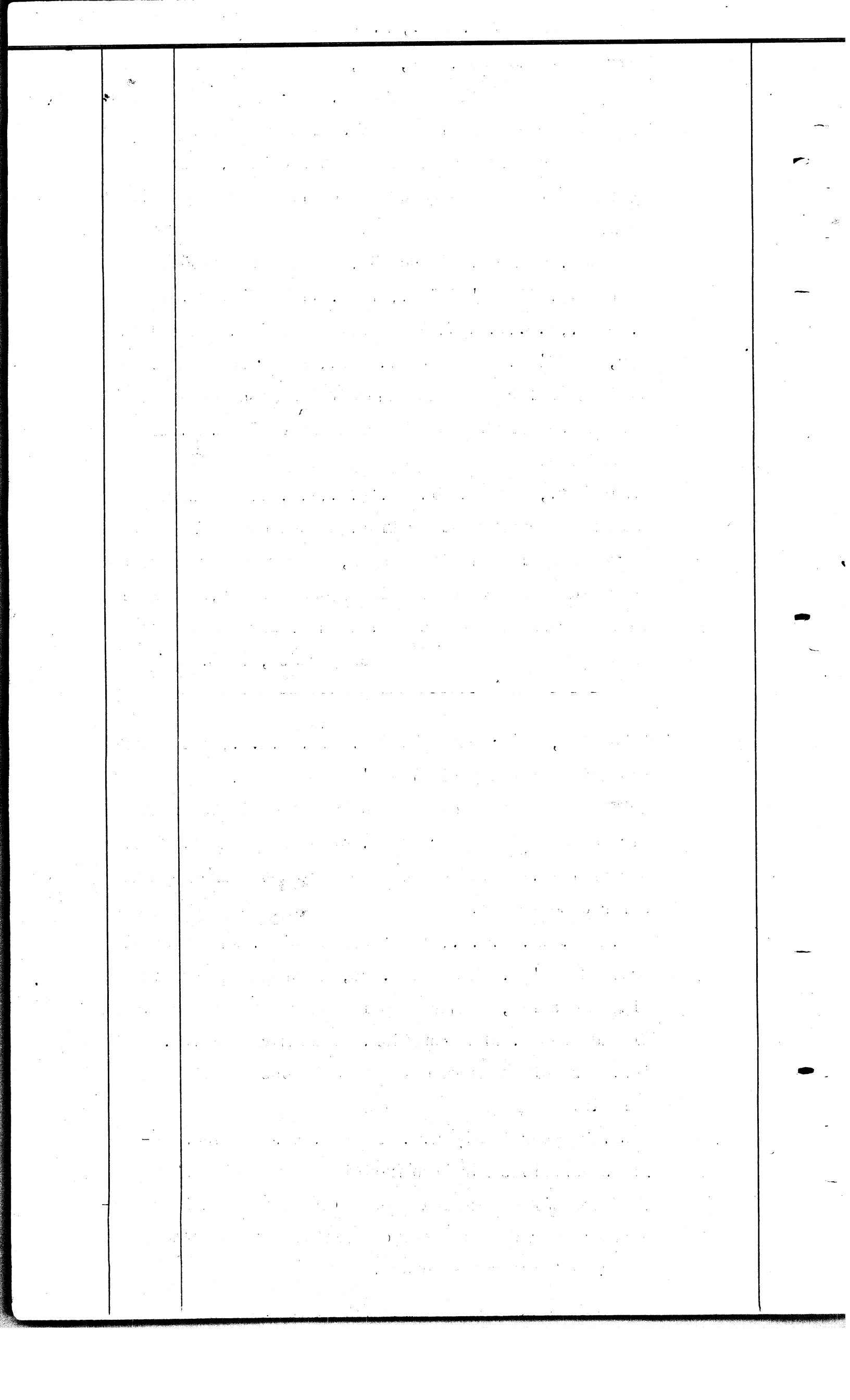
At said cor., at 6 h. ³³~~31~~.8 m. p.m., l.m.t., I observe polaris at eastern elongation, in accordance with instructions given in the Manual, and mark a line thus determined by a tack driven in a wooden stake, set firmly in the ground about 5 ch. N. of my instrument.

October 5th, 1904.

October 6th, 1904; At 7 h. 0 m. a.m., l.m.t., I lay off the azimuth of polaris $1^{\circ} 26'$ to the west, and mark the true meridian thus determined by a tack in the stake already set in the ground N. of my instrument. This mark falls .7 ins. west of the mark determined by the solar observation.

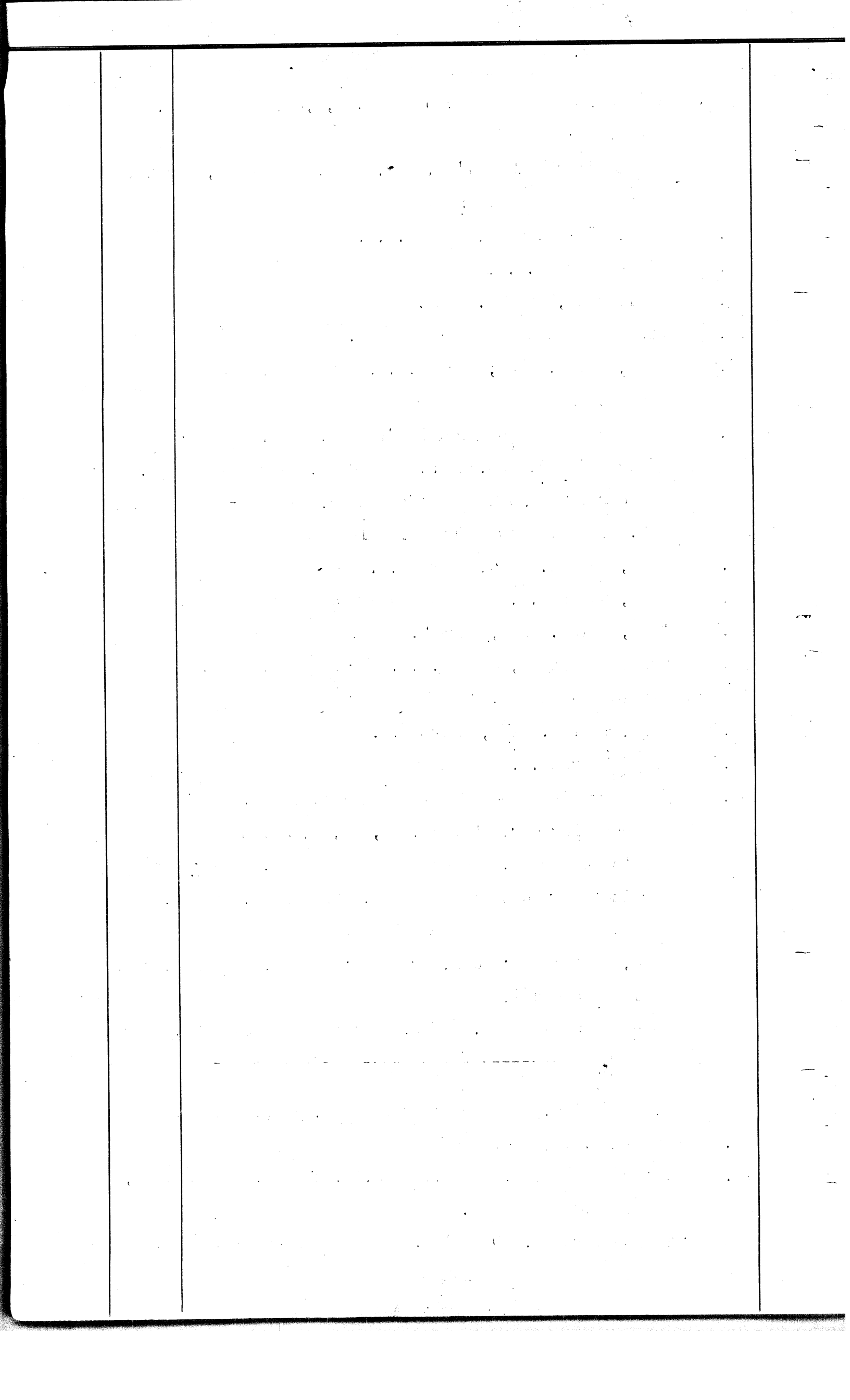
At 7h.20 m.a.m. l.m.t., I set off $5^{\circ} 3'$ S. on the decl. arc, $32^{\circ} 38'$ N. on the lat. arc, determine a meridian with the solar, and mark a point thereof on the stake ~~at~~ already set N. of my station. This mark falls .32 ins. west of the mark determined by observation on polaris.

The solar apparatus by a.m. and p.m. observations defines positions for true meridian about $37''$ east and $17''$ west of the meridian established by polaris observation; therefore I conclude that the adjustments of the instrument are satisfactory.



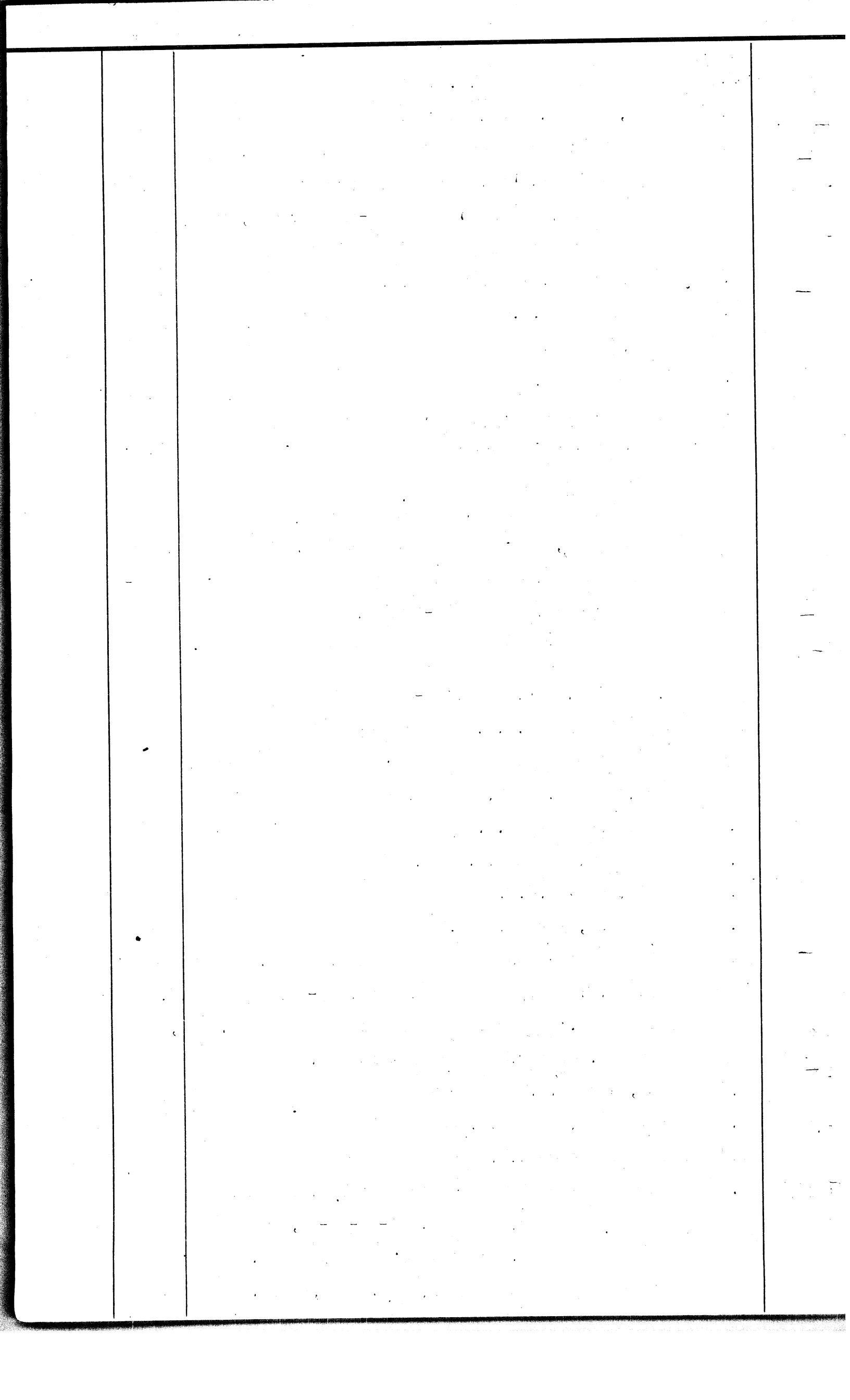
Chains	
	The magnetic bearing of the true meridian is $13^{\circ} 15' W.$ I commence at the cor. of secs. 1,2,35,36 on the S. bdy. of the Tp. Thence I run N. $0^{\circ} 1' W.$ bet. secs. 35 and 36, descending over roughly rolling land.
3.00	Wash, 20 lks. wide, bears E.N.E.
5.00	Ridge bears E.N.E.
8.60	Small wash, bears E. by N.
17.50	Ridge and road to Oracle, bear S.W:
24.00	Wash, 80 lks. wide, bears E.N.E. Enter dense mesquite and catsclaw.
40.00	Set a granite stone 9 x 9 x 14 ins., • ins. in the ground for $1/4$ cor. bet. secs. 35 and 36, marked $1/4$ on W. face; and raise a mound of stones 2 ft. base, $2-1/2$ ft. high W. of cor. Pits impracticable.
44.00	Wash, 60 lks. wide, bears N.E.
51.50	Spur, bears E.N.E. Leave dense underbrush.
54.50	Wash, 20 lks. wide, bears E. by N.
58.50	Prominent ridge, bears E.N.E. Descend along W. bank of gulch bearing N.
68.50	Wash, 10 lks. wide, bears N.E.
72.40	Ridge bears N.E.
80.00	Set a granite stone 7 x 10 x 14 ins. • ins. in the ground for cor. of secs. 25, 26, 35, 36, marked with one notch on the E. and one notch on the S. edges; and raise a mound of stones 2 ft. base, 2 ft. high W. of cor. Land, mountainous; soil, 3rd rate; timber, mesquite, cats- claw and cacti. Mountainous land 80.00 chs. Dense undergrowth 27.50 chs.

	S. $89^{\circ} 59' E.$ on a random line bet. secs. 25, 36.
40.00	Set temp. $1/4$ sec. cor.
78.60	Intersect E. bdy. of Tp. 10 lks. S. of cor. of secs. 25, 30 31, 36. Thence I run S. $89^{\circ} 57' W.$ on a true line bet. secs. 25, and 36 through dense mesquite.



Chains 2.00	Small wash, bears N.N.E.
17.60	Wash, 150 lks. wide, bears N.E.
38.60	Set a granite stone 7 x 9 x 15 ins. 10 ins. in the ground for 1/4 cor. bet. secs. 25, 36, marked 1/4 on the N. face; and raise a mound of stone 2-1/2 ft. base, 2 ft. high N. of Cor. Pits impracticable.
46.70	Wash, 35 lks. wide, bears N.E.
57.50	Ridge, bears E.N.E.
70.50	Wash, bears N.
72.00	Leave dense mesquite.
78.60	The cor. of secs. 25, 26, 35, 36. Land, rolling; soil, 3rd and 4th rates; undergrowth of mesquite. Dense undergrowth 72.00 chs. October 6th, 1904; I set off 5° 94' ^{10'} S. on the decl. arc and at 12 h. observe the sun on the meridian; the resulting lat. is 32° 38-1/2' N. /

	N. 0° 1' W. bet. secs. 25-26. Ascend hill.
1.50	Ridge bearing N.N.E. Descend.
12.00	Foot of descent. Enter dense mesquite and cacti.
24.00	Wash, 40 lks. wide, bears N. by E.
30.00	Same wash bears N.W.
35.50	Same wash, bears N.E.
37.40	Trail, bears N.N.E.
40.00	Same wash, bears N. by W.
43.00	Set a granite stone 6 x 8 x 14 ins. 10 ins. in the ground for W.C. to 1/4 cor. bet. secs. 25-26, marked W.C. 1/4 on the W.; and raise a mound of stones 2 ft. base, 2 ft. high W. of cor. Pits impracticable.
47.50	Wash, bears N.E. Thence over rolling land. Leave dense undergrowth.
65.00	Small wash, bears N.E.
71.30	Old road, bears N.E.
80.00	Set a granite stone 10 x 12 x 15 ins. 10 ins. in the ground for cor. of secs. 23-24-25-26, marked with one notch on the E. and two notches on the S. edges; and raise a mound of stones, 2 ft. base, 2 ft. high, W. of Corner.



Chains

Pits impracticable.

Land rolling and covered with dense undergrowth; soil,
3rd and 4th rates; dense undergrowth 35.50 chs.

Mountainous land 46.00 chs.; total mountainous or densely
wooded 80.00 chs.

October 6th, 1904.

October 7th, 1904.

N. $89^{\circ} 57'$ E. on a random line bet. secs. 24-25.

40.00

Set temp. $1/4$ sec. cor.

77.20

Intersect E. bdy. of Tps. 19 lks. S. of cor. of secs. 19-24-
25-30. Thence I run S. $89^{\circ} 49'$ W. on a true line bet.
secs. 24-25 over rolling land covered with dense mes-
quite.

18.00

Wash, 30 lks. wide, bears N.E.

19.70

Trail, bears N.E.

33.10

Wash, 15 lks. wide, course N.N.E.

37.20

Set a granite stone 7 x 10 x 14 ins. 10 ins. in the ground
for $1/4$ cor. bet. secs. 24-25, marked $1/4$ on the N. face
dig pits 18 x 18 x 12 ins. E. and W. of stone, 3 ft.
dist. and raise a mound of earth, 3 ft. base $1-1/2$ ft.
high N. of cor.

43.20

Wash, 100 lks. wide, bears .N.N.E.

47.00

Small wash, bears N.N.E.

63.00

Small wash bears N.N.E.

68.70

Old road, bears N.E.

77.20

The cor. of secs. 23-24-25-26.

Land rolling; soil 3rd rate; undergrowth of mesquite
brush.

Dense undergrowth ■ 77.20 chs.

October 7th, 1904; At 9 h.40 m. a.m., l.m't. I set off
 $5^{\circ} 30'$ S. on the decl. arc, $32^{\circ} 39-1/2'$ N. on the lat.
arc, and determine a meridian with the solar at the cor.
of secs. 23-24-25-26.

Thence I run N. $0^{\circ} 1'$ W. bet. secs. 23-24, over sharply

--	--	--

Chains	rolling land.
1.30	Wash, 10 lks. wide, bears E. by N.
16.00	Ridge bears E.N.E.
19.80	Gulch, course N.N.E
24.00	Descend abruptly into canyon.
34.00	Small canyon, bears N.N.E.
40.00	Falls on steep bank, sloping S.E.
40.30	Set a granite stone 8 x 9 x 18 ins. 12 ins. in the ground for W.C. to 1/4 cor. bet. secs. 23-24; mark 1/4 on N. face and W.C. on top; raise a mound of stones, 2 ft. base, 2 ft. high W. of cor. Pits impracticable. Thence over very rough cliff-like formation.
48.00	Main wash, 2 chs. wide, in prominent canyon, bears E. by N.
65.00	Ridge bears E. by N.
72.50	Wash, 20 lks. wide, bears E. by S.
78.50	Ridge bears E. by N.
80.00	Falls on hard steep bank of ravine running N. therefore I establish a W.C. 1.20 chs. W. of cor., as follows Set a sandstone 7 x 12 x 14 ins. 10 ins. in the ground for W.C. to cor. of secs. 13-14-23-24, marked with one notch on the E and three notches on the S. edges and W.C. on E; raise a mound of stones 2 ft. base 2 ft. high W. of cor. Pits impracticable. Land, mountainous; soil 4th rate; timber, scattered mesquite and cacti. Mountainous land 80.00 chs.

	October 7th, 1904: I set off 5° 32-1/2' S. on the decl. arc, and at 12 h. observe the sun on the meridian at the Point for cor. ^{Point for cor.} of secs. 13-14-23-24. The resulting lat. is 32° 39-1/2' N.
	Thence I run N. 89° 49' E. on a random line bet. secs. 13-24.
40.00	Set temp. 1/4 sec. cor.
75.84	Intersect E. bdy. of the Tp. 3 lks. N. of the cor. of secs. 13-18-19-24.
	Thence I run S. 89° 50' W. on a true line bet. secs. 13-24- over land broken by canyons and gulches.

Chains	
	Var. 13 45' E.
3.00	Descend abruptly.
4.90	Wash 1 ch. wide bears N.E. Ascend.
8.00	Top of hill. Descend hill sloping N.N.W.
11.50	Small wash course E.N.E. Ascend hill sloping S.E.
24.00	Top of hill. Descend abruptly into very rough canyon, bears E.N.E.
33.60	Wash, 50 lks. wide, bears E.N.E.
35.00	Begin ascent of left bank of canyon.
35.84	Falls on steep bank.
36.00	Set a porphyry stone 6 x 10 x 12 ins. 8 ins. in the ground for W.C. to 1/4 cor. bet. secs. 13-24, marked 1/4 on N face, and W.C. on top; raise a mound of stones 2 ft. base, 2ft. high N. of cor. Pits impracticable. Continue ascent.
47.00	Top.
56.00	Descend hill sloping N.N.W.
61.40	Wash 15 lks. wide bears N.E. Ascend.
73.00	Ridge bears E.N.E.
75.70	Ravine bears N.
75.84	The point for cor. of secs. 13-14-23-24, from which W.C. bears W. 1.20 chs. dist.
	Land, mountainous; soil 4th rate; timber scattered cacti and cacti. Mountainous land 75.84 chs.

	I proceed to account for closing by re-survey of south 3 miles of the E. bdy. of Tp. See Book C.

	From the cor. of secs. 2-3-34-35 on S. bdy. of Tp. I run N. 0 1' W. bet. secs. 34-35. Descend.
5.00	Foot of hill. Thence descend over rolling land.
15.00	Enter dense growth chollas, mesquite and prickly pear.
20.50	Small wash bears N.W.
26.50	Spur bears N.W.
39.00	Foot of rolling descent.
40.00	Set a granite stone 9 x 9 x 14 ins. 10 ins in the ground,

		<p> 1. The first part of the document discusses the importance of maintaining accurate records in a laboratory setting. It emphasizes the need for clear labeling and proper storage of samples to ensure the integrity of the data. </p> <p> 2. The second part of the document describes the various methods used to collect and analyze data. It includes a detailed description of the experimental procedures and the instruments used for data collection. </p> <p> 3. The third part of the document presents the results of the experiments. It includes several tables and graphs that illustrate the data collected during the study. </p> <p> 4. The fourth part of the document discusses the implications of the results and provides a conclusion to the study. It also includes a list of references and a bibliography. </p>	
--	--	--	--

Chains	for 1/4 cor. bet. secs. 34 and 35, marked 1/4 on the W. face; dig pits 18 x 18 x 12 ins. N. and S. of stone, 3 ft. dist. and raise a mound of earth 3 ft. base 1-1/2 ft. high W. of cor. Cross low flat.
51.00	Wash, 125 lks. wide, bears N.E.
59.00	Ascend over rolling ground.
63.00	Ridge bears N.E. Descend.
65.00	Foot. Over level land.
69.20	Wash, 15 lks. wide, bears N.E.
78.00	Ascend.
80.00	Set a granite stone 6 x 13 x 14 ins. 10 ins. in the ground for cor. of secs. 26-27-34-35, marked with two notches on the E. and one notch on the S. edges; raise a mound of stones 2 ft. base 2 ft. high W. Of cor. Pits impracticable. Land, level or rolling; soil, 3rd and 4th rates. Under growth of chollas, mesquite, etc. Densely wooded land, 80.00 chs. Mountainous land 47.00 chs.

	October 8th, 1904: At 2 h. 30 m., p.m. l.m.t. I set off 5° 58' S. on the decl. arc, 32° 38' 1/2' N. on the lat. arc. and by observation on the sun, determine a meridian at the cor. of secs. 26-27-34-35. E. on the random line bet. secs. 26-35.
40.00	Set temp. 1/4 sec. cor.
79.94	Intersect N. & S. line 5 lks. S. of cor. of secs. 25-26-35 36. S. 89° 58' W. on a true line bet. secs. 26 and 35, over roughly rolling land.
1.40	Wash, 15 lks. wide, bears N.
7.50	Ridge bears N.
12.00	Gulch bears N.
16.50	Spur bears N.
21.00	Wash, 10 lks. wide, course N..
29.00	Wash, 1 ch. wide, bears N.E.
33.70	Ridge bears N.E.

The first part of the document discusses the importance of maintaining accurate records of all transactions. It emphasizes that every entry should be clearly documented and verified. The following table provides a detailed breakdown of the financial data for the quarter.

Category	Item	Value	Notes
Revenue	Product Sales	120,000	Includes new product line
	Service Fees	80,000	Consistent growth
	Licensing	30,000	One-time fee
	Other	10,000	Miscellaneous
Expenses	Salaries	150,000	Includes bonuses
	Marketing	40,000	Increased spend
	Operational	60,000	Stable costs
Profit	100,000	Net profit	After taxes

The second part of the document outlines the strategic goals for the next fiscal year. Key objectives include expanding market reach, improving operational efficiency, and increasing customer satisfaction. The management team is committed to achieving these goals through innovative solutions and strong collaboration.

In conclusion, the company is well-positioned for continued success. The financial performance has been strong, and the strategic plan is clear. We look forward to a productive and profitable year ahead.

Chains	
38.00	Enter bushy flat.
39.97	Set a quartz stone 10 x 13x14 ins. 10 ins. in the ground, for 1/4 cor. bet. secs. 26 and 35, marked 1/4 on N. face; raise a mound of stones 2 ft. base, 2ft. high N. of cor. Pits impracticable.
59.40	Wash, 125 lks. wide, bears N.E.
76.00	Wash, 15 lks. wide, bears N.E.
79.94	The cor. of secs. 26-27-34-35. Land rolling or densely wooded level, soil 3rd and 4th rated, undergrowth of mesquite and catsclaw. Mountainous land 38.00 chs. Densely wooded level land 43 chs. Total mountainous or densely wooded land 79.94 chs.

	N. 0° 1' W. bet. secs. 26-27, through dense undergrowth of cacti and mesquite.
9.80	Wash, 30 lks. wide, bears E.N.E.
12.00	Leave dense undergrowth of cacti and mesquite. Over sharply rolling land.
24.00	Ridge bears N.E. Descend.
27.00	Foot of hill. Enter flat densely wooded with mesquite brush.
28.20	Wash 1 ch. wide, bears N.E.
40.00	Set a granite stone 6 x 8 x 14 ins. 10 ins. in the ground for 1/4 cor. bet. secs. 26-27, marked 1/4 on W. face; raise a mound of stones 2 ft. base 2 ft. high W. of cor. Pits impracticable. Leave dense mesquite. Ascend.
43.00	Ridge bears N.E. Descend.
50.10	Wash, 25 lks. wide, bears N.E. Over rolling land.
69.00	Ridge bears N.E.
80.00	Set a granite stone 6 x 12 x 14 ins. 10 ins. in the ground

Chains

for cor. of secs. 22-23-26-27, marked with two notches on the E. & S. edges; raise a mound of stones 2 ft. base 2 ft. high W. of cor. Pits impracticable.

Land, generally sharply rolling; some level with dense undergrowth of mesquite; soil, 3rd rate.

Mountainous land, 60.00 chs.; dense undergrowth 25.00 chs.

Total land, mountainous or covered with dense undergrowth, 80.00 chs.

October 8th, 1904.

October 9th, 1904: At 7 h. 40 m. a.m. l.m.t., I set off $6^{\circ}13'$ S. on the decl. arc, $32^{\circ}39\frac{1}{2}'$ N. on the lat. arc and determine a meridian with the solar at the cor. of secs. 22-23-26-27.

N. $89^{\circ}58'$ E. on a random line bet. secs. 23-26.

40.00 Falls on bank of wash.

42.00 Set temp. W.P. to $\frac{1}{4}$ sec. cor.

80.02 Intersent N. & S. line 10 lks. N. of cor. of secs. 23-24-25-26; thence I run,

N. $89^{\circ}58'$ W. on a true line bet. secs. 23-26.

Var. $13^{\circ}15'$ E.

Over sharply rolling land.

28.00 Descend abruptly.

29.00 Foot of descent. Enter flat, densely wooded with mesquite and catsclaw.

38.01 Set a granite stone 7 x 12 x 14 ins. 10° ins. in the ground for W.C. to $\frac{1}{4}$ cor. bet. secs. 23-26, marked W.C. $\frac{1}{4}$ on N. face; raise a mound of stones 2 ft. base 2 ft. high N. of cor. Pits impracticable.

39.10 Middle of wash, 125 lks. wide, course N.E.

40.01 Falls on bank of same wash.

46.00 Leave dense mesquite and catsclaw. Over ridges and gulches sloping N.E.

67.00 Small wash, bears E.N.E.

72.00 Spur, bears E. by N.

80.02 The cor. of secs. 22-23-26-27.

Chains

- L and sharply rolling, or level and densely wooded. Soil, 3rd and 4th rates.
- Mountainous land 63.02 chs. Densely wooded level land 17.00 chs. Total mountainous or densely wooded 80.02 chs.
-
- N. 0° 1' W. bet. secs. 22-23, over sharply rolling land.
- 5.00 Wash, 40 lks. wide, bears E.N.E.
- 10.00 Ridge bears N.E.
- 18.10 A small wash, course E. by N.
- 22.00 Ridge bears E. by N.
- 32.00 Small wash, bears E. by N.
- 40.00 Set a granite stone 7 x 13 x 15 ins. 10 ins. in the ground for $1/4$ cor. bet. secs. 22-23, marked $1/4$ on W. face; raise a mound of stones 2- $1/2$ ft. base 2- $1/2$ ft. high W. of cor. Pits impracticable.
- 45.00 Wash, 15 lks. wide, bears E.N.E. Ascend.
- 70.00 Descend.
- 78.90 Wash, course N.E. 30 lks. wide.
- 80.00 Point for sec. cor. falls in small wash, course S.E. Therefore I establish W.C. 1.20 chs. ^{to the} west, as follows:
Set a quartz stone 10 x 12 x 16 ins. 10 ins. in the ground for W.C. to cor. of secs. 14-15-22-23, marked with two notches on the E. and three notches on the S. edges; and W.C. on ^{NE} face: raise a mound of stones 2 ft. base, 2 ft. high W. of cor. Pits impracticable.
- Land sharply rolling and broken by canyons; soil, 3rd and 4th rates; timer scattered cacti and mesquite.
- Mountainous land 80.00 chs.
-
- October 9th, 1904; I set off 6° 18' S. on the decl. arc and at 12 h. observe the sun on the meridian at the cor. ^{pt.} of secs. 14-15-22-23; the resulting lat. is 32° 40' N. S. 89° 58' ^{from cor. point} E. on a random line bet. secs. 14-23.
- 40.00 Set temp. $1/4$ sec. cor.
- 78.74 W.C. to cor. of secs. 13-14-23-24 bears N. 5 lks. dist.
- 79.94 Intersect N. & S. line 5 lks. S. of cor. of secs. 13-24-23-24.

Chains

- Thence I run
W. on a true line bet. secs. 14 and 23. Descend along hill
sloping N.N.W.
- 16.25 Wash, 30 lks. wide, bears N.E. Ascend along rolling hills
aloping S.S.E.
- 28.90 Small wash, course S.E.
- 39.97 High point of prominent ridge bears N.E.
Set a granite stone 6 x 8 x 14 ins. 10 ins. in the ground
for 1/4 cor. bet. secs. 14-23, marked 1/4 on N. face;
raise a mound of stones 2 ft. base 2 ft. high N. of cor.
Pits impracticable. Descend:
- 44.25 Small wash, bears N.
- 46.00 Spur bears N.
- 49.50 Descend very abruptly.
- 49.70 Wash, 20 lks. wide, bears N. at this point, general bearing
N.N.E. Ascend along ridges and gulches sloping S. to
wash.
- 70.00 Ridge bears N.E.
- 77.80 Wash, 30 lks. wide, course N.E.
- 79.94 Point for Cor. of secs. 14-15-22-23 falls in wash.
- 81.14 W.C. *Land extremely mountainous. Soil + thrate.*
mts land 79.94 etc October 9th, 1904.
-

Chains	
	Oct. 10th, 1904; From the cor. of secs. 3, 4, 33 and 34 previously established by me, I run
	N 0°-2' W. bet. secs. 33 and 34 over rolling country, wooded with scattered mesquite catsclaw, chollas, etc.
7.00	Top of hill.
12.80	Wash, 30 lks. wide, bears N.E.
24.40	Pass prominent pile of boulders:
36.50	Top of hill. Descend abruptly.
40.00	Set a granite stone 7 x 9 x 14 ins., 10 ins. in the ground for 1/4 cor. bet. secs. 33 and 34 marked 1/4 on the W. face; dig pits 18 x 18 x 12 ins., N. & S. of stone 3 ft. dist. and raise a mound of earth and stones 2 ft. base, 2 ft. high, W. of cor.
40.90	Wash, 40 lks. wide, bears E.N.E. Ascend.
51.60	Trail and top of prominent ridge, bear E.
57.00	Descend hill sloping N.W.
59.00	Wash, 25 lks. wide, bears N.E. Ascend hill sloping abruptly S.E.
62.00	Top of hill. Along side hill sloping E.
75.00	Reach right bank of small wash, course N. Descend gradually along E. side of wash.
79.00	Descend very abruptly ten ft.
79.60	Center of wash, 30 lks. wide, course E.
80.00	Set a quartz stone 10 x 12 x 14 ins., 10 ins. in the ground for cor. of secs. 27, 28, 33 and 34, marked with 3 notches on the E. and one notch on the S. edges; dig pits 18 x 18 x 12 ins. in each sec. 5-1/2 ft. dist; and raise a mound of earth 4 ft. base, 3 ft. high, W. of cor.
	Land, mountainous.
	Soil, 3rd rate.
	Timber, mesquite, catclaw and cacti.
	Mountainous land, 80.00 chs.
	Oct. 10th, 1904; I set off 6°-38' S. on the decl. arc 32°-38-1/2' N. on the lat. arc, and at 9 h. 0 m., a.m.,

Chains

and determine a true meridian
 1.m.t., ~~observe the sun on the meridian.~~

- E. on a random line bet. secs. 27-34. Var. 13° E.
- 40.00 Point for $1/4$ sec. cor. falls on steep hill.
- 43.00 Set temp. W.P.
- 80.00 Intersect N. & S. line 5 lks. S. of the cor. of secs. 26-27-34-35; thence I run
- S. $89^{\circ} 58'$ W. on a true line bet. secs. 27-34 over hilly land covered with dense mesquite and cacti undergrowth.
- 1.30 Low ridge, bears N.E.
- 19.00 Wash, 20 lks. wide, bears N.E. by E.
- 24.00 Leave dense undergrowth of mesquite and cacti. Ascend.
- 37.00 Set a granite stone 8 x 9 x 15 ins. 10 ins. in the ground for W.C. to $1/4$ cor. bet. secs. 27-34, marked W.C. $1/4$ on N. face; raise a mound of stones 2 ft. base, 2 ft. high N. of cor. Pits Impracticable.
- 57.00 High prominent ridge, bears N.E. Descend over roughly rolling ground.
- 80.00 The cor. of secs. 27-28-33-34.
- Land, mountainous; soil, 3rd and 4th rates: undergrowth of mesquite and cacti.
- Mountainous land 80.00 chs: dense undergrowth 24.00 chs.
- October 10th, 1904; I set off $6^{\circ} 41'$ S. on the decl. arc, and at 12 h. 0 m., observe the sun on the meridian at the cor. of secs. 27-28-33-34; the resulting lat. is $32^{\circ} 38-1/2'$ N. \checkmark
-

Chains	N. $0^{\circ} 2'$ W. bet. secs. 27 and 28. Ascend hill 70 ft. high
8.20	Over top of side hill, bears W. Descend hill sloping N.W.
14.80	Wash, 15 lks. wide, course N.E. Ascend hill 140 ft.
27.50	Top of very prominent ridge. Descend hill sloping W.N.W. 150 ft.
40.00	Set a granite stone 8 x 12 x 15 ins., 10 ins. in the ground for $1/4$ sec. cor. bet. secs. 27 and 28, marked $1/4$ on W. face; and raise a mound of stone, 2 ft. base 2 ft. high, W of cor. Pits impracticable.
43.70	Wash, 20 lks. wide, bears N.E. Ascend 80 ft., hill sloping S.E.
49.00	Top of spur. Bears N.E. Descend hill sloping N.W., 80 ft.
55.40	Middle of wash, 120 lks. wide, bears N.N.E.
57.15	Trail, bears N.N.E.
58.00	Ascend, thence over ridges and gulches sloping E. into canon.
77.00	Enter wash wooded with mesquite catsclaw, etc.
80.00	Point for cor. falls in sandy bed of wash.
	Land, mountainous.
	Soil, stony 3rd and 4th rate.
	Timber, scattered mesquite, catsclaw and cacti.
	Mountainous land, 77.00 chs.; densely wooded ^{and level} land 3.00 chs.
	October 10th, 1904.
	<i>Impracticable to survey line between Sec 22 & 27. Mountainous land.</i>
	October 11th, 1904: At 9 h. 10 m. a.m. 1.m.t., I set off $32^{\circ} 39-1/2'$ N. on the lat. arc, $7^{\circ} 1'$ S. on the decl. arc; and determine a meridian with the solar at the cor. of secs. 21-22-27-28.
	Thence I run, in wash.
	N. $0^{\circ} 2'$ W. bet. secs. 21-22.
10.00	Set a quartz stone 12 x 12 x 14 ins. 10 ins. in the ground for W.C. to secs. 21-22-27-28, marked W.C. on the NE face; with two notches on the S. and three notches on the E. edges; and raise a mound of stones 2 ft. base 2 ft. high W. of cor.
	Ascend hill, sloping S.E.
12.00	E. end of spur

Chains	
13.00	Descend slope N.
16.50	Middle of wash, bears E.
19.00	Ascend.
22.70	Top of ridge, bears E. Thence over ridges and gulches. bearing E.
38.55	Top of ridge, descend.
40.00	Set a granite stone 5 x 12 x 12 ins., 8 ins. in the ground for 1/4 cor. bet. secs. 21 and 22, marked 1/4 on W. face; and raise a mound of stones 2 ft. base, 2 ft high W. of cor. Pits impracticable.
43.00	Foot of hill. Across low flat.
49.20	Begin ascent.
52.00	Top of ascent, thence over rolling mesa.
62.60	Wash, 5 lks. wide, bears N.E.
71.00	Top of hill, sloping N. Descend.
80.00	Set a quartz stone 12 x 12 x 14 ins., 10 ins. in the ground for cor. of secs. 15-16-21-22 and marked with 3 notches and 93 on NE face; and 16E on SE face on the S. and 3 notches on the E. edges; dig pits 18 x 18 x 12 ins. in each section, 5-1/2 ft. dist.; and raise a mound of earth, 4 ft. base, 2 ft. high W. of cor.
	Land, mountainous.
	Soil, 3rd and 4th rates.
	Timber, mesquite, catsclaw and century plant.
	Mountainous land 70.00 chs.: densely wooded land 10.00 chs.
	October 11th, 1904; At this cor. I set off 7° 4' S. on the decl. arc and at 12 h. observe the sun on the meridian the resulting lat. is 32° 40' \checkmark .

	S. 89° 58' E. on a random line bet. sections 15-22. Var. 13° 15' E.
40.00	Set temp. 1/4 sec. cor.
78.82	W.C. bears N. 2 lks. dist.
80.02	Intersect N. & S. line 2 lks. S. of point for cor. of secs. 14-15-22-23.
	Thence I run N. 89° 59' W. on a true line bet. secs. 15-22.

Chains	
1.20	W.C. to cor. of secs. 14-15-22-23.
8.70	Ridge bears E.N.E.
12.15	Small wash, bears N.E.
16.70	Ridge bears N.E.
23 75	Perpendicular drop, 30 ft.
24 40	Wash 120 lks. wide, bears N.N.E. Thence over level flat covered with dense mesquite undergrowth.
30 30	Leave dense mesquite. Ascend.
32 40	Ridge bears N.E.
35 90	Wash, 60 lks. wide, bears E.N.E.
40.01	Set a granite stone 6 x 12 x 16 ins. 10 ins. in the ground for 1/4 cor. bet. secs. 15-22, marked 1/4 on N. face; raise a mound of stones, 2 ft. base 2 ft. high N. of cor. Pits impracticable.
	Ascend over ridges and gulches sloping abruptly S.
56 00	Cross ridge running E. by N. Thence along ridges and gulches sloping N.
66 40	Wash, 30 lks. wide, bears N.E.
80.02	The cor. of secs. 15-16-21-22. Land broken by ridges and canyons. <i>Sail 4th Rate.</i> <i>Mountainous Land 80.00th</i> October 11th, 1904.

	October 12th, 1904;
	N. 0° 2' W. bet. secs. 32-33.
	Var. 13° 30' E.
8 70	Trail S.W.
13 40	Wash 60 lks. wide, bears N.E.
23 00	Ridge bears N.E.
40.00	Set a granite stone 12 x 12 x 15 ins. 10 ins. in the ground for 1/4 cor. bet secs. 32-33, marked 1/4 on W. face; dig pits 18 x 18 x 12 ins. N. & S. of stone, 3 ft. dist. and raise a mound of earth 3 ft. base 1-1/2 ft. high W. of cor.
43 40	Trail bears S.W.
72.00	Wash, 110 lks. wide, bears E.N.E.
77 00	Rough ridge bears E.N.E.

Chains

80.00 Set a granite stone 8 x 9 x 15 ins. 10 ins. in the ground for cor. of secs. 28-29-32-33, marked with 4 notches on the E. and one notch on the S. edges; raise a mound of stone 2 ft. base 2 ft. high W. of cor. Pits impracticable.

Land, mountainous; soil, 3rd rate; timber scattered mesquite and cacti.

Mountainous land 80.00 chs.

October 12th, 1904: At, 9 h. 15 m. a.m., l.m.t., I set off $7^{\circ} 23-1/2'$ S. on the decl. arc, $32^{\circ} 38-1/2'$ N. on the lat. arc and determine a meridian with the solar at the cor. of secs. 28-29-32-33.

E. on a random line bet. secs. 28-33.

40.00 Set temp. $1/4$ sec. cor.

80.00 Intersect N.&S. line 7 lks. S. of cor. of secs. 27-28-33-34.

Thence I run

S. $89^{\circ} 57'$ W. on a true line bet. secs. 28-33 over roughly rolling land.

1.40 Wash, 25 lks. wide, bears E. by S.

24.50 Same wash, bears E.N.E.

40.00 Set a granite stone 6 x 7 x 15 ins. 10 ins. in the ground for $1/4$ cor. bet. secs. 28-33, marked $1/4$ on N. face; dig pits, 18 x 18 x 12 ins. E & W. of stone 3 ft. dist. and raise a mound of earth 3 ft. base $1-1/2$ ft. high N. of cor.

57.90 Wash, 20 lks. wide, bears N.

62.20 Prominent wash, 50 lks. wide, bears N.E.

80.00 The cor. of secs. 28-29-32-33.

Land mountainous; soil 3rd and 4th rates; scattered undergrowth of mesquite and cacti.

Mountainous land 80.00 chs.

October 12th, 1904; I set off $7^{\circ} 26'$ S. on the decl. arc and at 12 h. observe the sun on the meridian at the cor

Chains	
	of secs. 28-29-32-33; the resulting lat. is 32° 39' N.
	N 0° 2' W. bet. secs. 28-29.
12.00	Ridge bears N.E.
22 50	Spur bears N.N.E.
29 60	Important wash, 1 ch. wide bears N.E. Ascend hill.
40.00	Set a granite stone 8 x 8 x 12 ins. 8 ins. in the ground for 1/4 cor. bet. secs. 28-29, marked 1/4 on W. face; raise a mound of stones 2 ft. base 2 ft high W. of cor. Pits impracticable.
46.00	Top of ridge, which bears E.N.E
54 30	Gulch course N.E.
60 00	Spur bears E.
66 50	Wash, 10 lks. wide, bears E.
77 90	Wash, 10 lks. wide, bears E.S.E.
80.00	Set a quartz stone 8 x 8 x 12 ins. 8 ins. in the ground for cor. of secs. 20-21-28-29, marked with 4 notches on the E. and 2 notches on the S. edges; dig pits 18 x 18 x 12 ins. in each sec. 5-1/2 ft. dist. and raise a mound of earth 4 ft. base 2 ft. high W. of cor.
	Land, sharp rolling; soil, 3rd and 4th rates; scattered mesquite and cacti undergrowth
	Mountainous land 80.00 chs.

	N. 89° 57' E. on a random line bet. secs. 21-28.
40.00	Set temp. 1/4 sec. cor.
80.04	Intersect N. & S. line 9.90 chs. S. of W.C. to cor. of secs. 21-22-27-28.
	Thence I run
	N. 89° 59' W. bet. secs. 21-28. Ascend.
25 50	Prominent ridge bears N.N.E.
32.00	Wash, 30 lks. wide, bears N.N.E.
40.02	Set a granite stone 6 x 10 x 18 ins. 12 ins. in the ground for 1/4 cor. bet. secs. 21-28, marked 1/4 on N. face; raise a mound of stones 2 ft base 2 ft. high N. of cor. Pits impracticable.
48 50	Prominent ridge, bears N.N.E.

Chains

56 20 Wash 40 lks. wide, bears N.N.E

64 50 Wash, 10 lks. wide, course E.S.E."

80.04 The cor. of secs. 20-21-28-29.

Land, mountainous; soil, 3rd and 4th rates; scattered undergrowth of cacti and mesquite.

Mountainous land 80.00 chs.

October 12, 1904.

October 13th, 1904.

N. 0° 2' W. bet. secs. 20-21.

Var. 13° 30' E.

Ascend over gulches and spurs having a general easterly bearing.

33.00 Prominent ridge bears NE.

40.00 Set a quartz stone 8 x 8 x 14 ins. 9 ins. in the ground for 1/4 cor. bet. secs. 20-21, marked 1/4 on W. face; raise a mound of stones 2 ft. base 2 ft. high W. of cor. Pits impracticable.

46.00 Prominent wash 125 lks. wide, bears N.E.

52.00 Spur bears N.E.

63 30 Gulch bears E.

68.00 Descend abruptly.

69.10 Wash, 30 lks. wide, bears E.

79.50 Wash, 40 lks. wide bears S E. at this point.

80.00 Falls on steep bank of wash. Therefore I establish W.C. 2.75 chs. E. as follows- Set a granite stone 12 x 14 x 16 ins. 10 ins. in the ground for W.C. to cor. of secs. 16-17-20-21, marked with 4 notches on the E. and 3 notches on the S. edges and W.C. on ^{N.E. face} top; raise a mound of stones 2 ft. base, 2 ft. high W. of cor. Pits impracticable.

Land rough with canyons and ridges; soil 4th rate; undergrowth of cacti and mesquite.

Mountainous land 80.00 chs.

S 89° 59' E. on a random line bet. secs. 16-21.

Chains

- 40.00 Point for 1/4 cor. falls in wash,
 48.00 Set temp. W.P.
 79 92 Intersect N.& S. line 3 lks. S. of cor. of secs. 15-16-
 21-22.
 Thence I run
 W. on a true line, bet. secs 16-21.
 5 80 Trail bears N.E.
 7 50 Ridge bears E.N.E. Continue along ridges and gulches
 bearing N.
 25.00 Enter flat covered with dense undergrowth of mesquite
 and cacti.
 31.96 Set a limestone 6 x 8 x 18 ins. 12 ins. in the ground
 for W.C. to 1/4 cor. bet. secs. 16-21, marked W.C.
 1/4 on N. face; raise a mound of stones 2 ft. base
 2 ft. high N. of cor. Pits impracticable
 39 96 Point for 1/4 sec. cor. falls in wash 125 lks. wide,
 course E.N.E.
 50.00 Leave flat and dense undergrowth. Ascend over ridges and
 gulches sloping S.
 75.70 Top of spur, bears S.
 77 17 W.C. to cor. of secs. 16-17-20-21.
 79 92 Point for cor. of secs. 16-17-20-21.
 Land roughly rolling, or densely wooded level. Soil 3d
 and 4th rates; undergrowth of mesquite catsclaw and
 scattered cacti.
 Mountainous land 54 92 chs.
 Level land covered with dense undergrowth 25.00 chs.
 Total mountainous and densely wooded land 79.92 chs.
- October 13th, 1904; I set off 7° 49' S. on the decl.
 arc, and at 12 h. observe the sun on the meridian at
 the cor. of secs. 31-32 on the S. bdy of the Tp.;
 the resulting lat. is 32° 38' N. ✓
 N 0° 3' W. bet. secs. 31-32, over roughly rolling land
 covered with large granite boulders, dense undergrowth
 and mountain oak.

Chains
40.00

Set a granite stone 6 x 12 x 18 ins. 12 ins. in the ground for 1/4 cor. bet. secs. 31-32, marked 1/4 on W. face; from which

An oak 6 ins. diam bears N. 78° E 23 lks. dist. marked 1/4 S. 32 B.T.

An oak 5 ins. diam. bears N. 41° W. 48 lks. dist. marked 1/4 S. 31 B.T.

43.00

Leave dense oak.

49 30.

Road bears E.N.E.

49 60

Wash, 20 lks. wide, bears E.N.E.

80.00

Point for cor. of secs. 29-30-31-32 falls in wash. Therefore I establish W.C. 90 lks. east as follows;

Set a granite stone 5 x 10 x 14 ins. 10 ins. in the ground for W.C. to cor. of secs. 29-30-31-32, marked with 5 notches on the E. and one notch on the S. edges, and W.C. on N.E. face: raise a mound of stones 2 ft. base 2 ft. high W. of cor. Pits impracticable.

Land sharply rolling: soil 3rd rate; timber scrub and mountain oak and scattered cacti.

Mountainous land 80.00 chs.; densely wooded land 43.00 chs.

October 13th, 1904; At 2 h. 40 m. p. m. 1.m.t., I set off 7° 51' S. on the decl. arc, 32° 38-1/2' N. on the lat. arc and determine a meridian with the solar at the cor. of secs. 29-30-31-32.

East on a random line bet. secs. 29-32.

40.00

Set temp. 1/4 sec. cor.

80.04

Intersect N. & S. line 1 lk. S. of cor. of secs. 28-29-32-33.

Thence I run, West on a true line bet. secs. 29-32 over sharply rolling land.

13.00

Spur bears N.

25 50

Wash, 25 lks. wide, bears N.

36.00

Large spur, bears N.N.E. Descend abruptly.

40.02

Set a granite stone 5 x 10 x 12 ins. 8 ins. in the ground for 1/4 cor. bet. secs. 29-32, marked 1/4 on N

Chains

- face; raise a mound of stones 2 ft. base 2 ft. high, N. of cor.
- 41.80 Prominent wash 30 lks. wide, bears N.N.E.
- 49.00 From this point the junction of two washes, the courses of which are N.E. and N.N.E. bears S., 8 chs. dist.
- 52.87 Kanally place bears S. about 35 chs. dist. Continue over ridges and gulches bearing S.S.E.
- 74.00 Ridge bears N.E.
- 79.14 W.C. to cor. of secs. ~~29~~-30-31-32.
- 80.04 Point for sec. cor. falls in wash.
Land sharply rolling; soil 3rd and 4th rates; timber scattered mountain oak, mesquite and cacti.
Mountainous land 80.04 chs.
-
- W. on a random line bet. secs. 30-31.
- 40.00 Point for 1/4 sec. cor. falls near edge of wash.
- 40.30 Set temp. W.P.
- 78.45 Intersect W. bdy. of TP/ 3.85 chs. N. of the cor. of secs. 25-36 T. 9 S., R. 15 E.
Set a granite stone 10 x 10 x 14 ins. 10 ins. in the ground for closing cor. of secs. 30-31, marked C.C. on E with one notch on S. and 5 notches on N. edges, and raise a mound of stones 2-1/2 ft. base 2-1/2 ft. high E. of cor. Pits impracticable.
Thence I run, E. on a true line bet. secs. 30-31.
- 1.80 Mammoth Road, bears N.E.
- 12.00 Wash, 15 lks. wide, bears N.E.
- 26.00 Ridge bears N.E.
- 38.25 Set a quartz stone 8 x 8 x 12 ins. 8 ins. in the ground for W.C. to 1/4 cor. bet. secs. 30-31, marked ^{W.C.} 1/4 on N. face; from which
An oak 12 ins. diam, bears N. 1° E 70 lks. dist. marked ^{W.C.} 1/4 S. 30 B.T.
A cherry 5 ins. diam bears S. 32° E 52 lks. dist. marked ^{W.C.} 1/4 S. 31 B.T.
- 38 45 Point for 1/4 cor. falls near edge of wash.
- 39 40 Center of Cherry Valley wash, 1 ch. wide, course N.N.E.

Chains		BOOK 1838
44.45	Small wash, bears N.	
77 60	Wash, 20 lks. wide, bears N. by E.	
78 45	Cor. of secs. 29-30-31-32.	
	Land sharply rolling; soil 2nd and 3rd rates; timber scattered oak, mesquite and oak.	
	Mountainous land 78.45 chs.	
	October 13th, 1904.	

	October 14th, 1904.	
	N. 0° 3' W. bet. secs. 29-30.	
	Var. 13° 30' E.	
8.80	Wash, 30 lks. wide, bears N.E.	
11.70	Same bears N.W. Over irregular rolling land.	
40.00	Set a granite stone 5 x 16 x 20 ins. 15 ins. in the ground for 1/4 cor. bet. secs. 29-30 marked 1/4 on W. face; raise a mound of stones 2 ft. base, 2 ft. high W. of cor.	
50.00	Enter dense undergrowth of mesquite. Over spurs and gulches sloping W.	
62 70	Leave dense mesquite. Ascend.	
65 97	Top. Old Tonnally place bears S 41° 4' W. about 22 chs. dist.	
66.00	Spur bears W. Enter undergrowth of mesquite.	
77.00	Leave mesquite.	
80.00	Set a granite stone 8 x 14 x 24 ins. 18 ins. in the ground for cor. of secs. 19-20-29-30, marked with 5 notches on the E. and 2 notches on the S. edges; raise a mound of stone 2 ft. base, 2 ft. high W. of cor. Pits impracticable. This cor. is on a steep bank of the Cherry Valley wash about 30 ft. above the level of the wash bed. Land mountainous; soil 3rd and 4th rates; timber, mesquite and catsclaw	
	Mountainous land 80.00 chs.	

	October 14th, 1904; At 8 h. 40 m., a.m. l.m.t., I set off 8° 7-1/2' S. on the decl. arc, 32 39-1/2' N. on the	

Chains

- lat. arc and determine a meridian with the solar at the cor. of secs. 19-20-29)30.
- E. on a random line bet. secs. 20-29.
- 40.00 Set temp. 1/4 sec. cor.
- 79.98 Intersect N. & S. line 3 lks. N. of the cor. of secs. ²⁰ 21-28-29.
- Thence I run, N. 89° 59' W. on a true line bet. secs. 20-29 over roughly rolling land.
- 23.80 Wash, 10 lks. wide, bears E.S.E
- 24.40 Wash 10 lks. wide, bears N.
- 31 50 Wash, 15 lks. wide, tributary to Cherry Valley wash, bears N.N.E.
- 39 ~~90~~ Set a granite stone 10 x 10 x 12 ins. 8 ins. in the ground for 1/4 cor. bet. secs. 20-29, marked 1/4 on N. face; raise a mound of stones 2 ft. base, 2 ft. high N. of cor. Pits impracticable.
- 59 20 Wash, 30 lks. wide, bears N.
- 79.98 The cor. of secs. 19-20-29-30.
- Land roughly rolling; soil 4th rate; scattered undergrowth of mesquite, cacti and catsclaw.
- Mountainous land 80.00 chs.
-
- W. on a random line bet. secs. 19-30.
- 40.00 Set temp. 1/4 sec. cor.
- 78.40 Intersect W. bdy. of Tp. 3.92 chs. N. of the cor. of secs. 24-25 T. 9 S. R. 15 E.
- Set a porphyry stone 5 x 15 x 24 ins. 18 ins. in the ground for closing cor. to secs. 19-30 marked C.C. on E. face with 4 notches on the N/ and 2 notches on the S. edges; raise a mound of stones 2-1/2 ft. base, 2 ft. high N. of cor. Pits impracticable. Thence I run E. on a true line bet. secs. 19-30.
- 9.15 Trail bears N.E.
- 38 40 Set a granite stone 10 x 10 x 14 ins. 10 ins. in the ground for 1/4 cor. bet. secs. 19-30 marked 1/4 on N. face; and raise a mound of stones 2 ft. base 2 ft. high

Chains

N. of cor. Pits impracticable.

62 30 Wash, 25 lks. wide, bears E. by N.

71.10 Mammoth Road bears N.E.

77.50 Cherry Valley wash, 50 lks. wide, bears N. by E.

78.40 The cor. of secs. 19-20-29-30.

Land roughly rolling; soil 3rd rate; timber scattered
undergrowth of mesquite catsclaw and cacti.

Mountainous land 78.40 chs.

Oct. 14th, 1904; I set off 8° 11' S. on the decl. arc and
at 12 h. observe the sun on the meridian at the cor. of
secs. 19-20-29-30; the resulting lat. is 32° 39-1/2' N.
N. 0° 3' W. bet. secs. 19-20 over roughly rolling land.

Descend abruptly.

3.00 Road in Cherry Valley Wash, 50 lks. wide, bears N.N.E.

6 85 Mammoth Road, bears N.N.E.

18.00 Same road bears N.N.W.

29 95 Same road bears N.N.E.

30 10 Wash, 10 lks. wide bears E.

40.00 Set a granite stone 8 x 12 x 16 ins. 10 ins. in the
ground for 1/4 cor. bet. secs. 19-20, marked 1/4 on W.
face; dig pits 18 x 18 x 12 ins. N. & S. of stone. 3 ft.
dist. and raise a mound of earth 3 ft. base 1-1/2 ft.
high W. of cor.

An oak 12 ins. diam bears S. 35° 15' E. 103 lks. dist.

marked 1/4 S. 20. B.T.

no other trees within limits
Thence over roughly rolling land to

80.00 Set a sandstone 6 x 8 x 16 ins. 10 ins. in the ground
for cor. of secs. 17-18-19-20, marked with 5 notches on
the E. and 3 notches on the S. edges; raise a mound of
stones 2 ft. base 2 ft. high W. of cor. Pits impracticable.

Land roughly rolling; soil 3rd and 4th rates; timber
scattered mesquite, oak and catsclaw.

Mountainous land 80.00 chs.

S. 89° 59' E. on a random line bet. secs. 17-20.

40.00 Set temp. 1/4 sec. cor.

Chains

BOOK 1838

- 80.06 Intersect N. & S. line 6 lks. N. of point for cor. of secs. 16-17-20-21, from which W.C. bears E. 2.75 chs. dist. Thence I run, N. $89^{\circ} 56'$ W. on a true line bet. secs. 17-20.
- 0.40 Spur bears S.
- 3.20 Wash, 15 lks. wide, course E.S.E.
- 18.80 Ridge bears N.E.
- 23.00 Wash, 5 lks wide, bears N.
- 27.00 Ridge bears N.E.
- 32.90 Wash, 20 lks. wide, bears N.N.E. Ascend.
- 40.03 Falls on boulder in place. 36 by 50 by 8 ins. above ground. I cut across (X) at the exact point for $1/4$ cor. bet. secs. 17-20 marked $1/4$ on the N^v side; and raise amount of stones 2 ft. base 2 ft. high N^v of cor. Pits impracticable.
- Continue ascent along S. side of spur running E.N.E.
- 48.00 Cross to N. side of spur
- 54.20 Ridge running N.N.E.
- 54.73 Mammoth Road bears N.N.E.
- 66.00 Wash 25 lks. wide bears N.
- 73.00 Ridge bears N.
- 77.00 Wash 10 lks. wide, bears N.
- 80.06 The cor. of secs. 17-18-19-20.
- Land broken by ridges and canyons; scattered undergrowth of cacti and mesquite; soil 3rd and 4th rate.
- Mountainous 80.06 chs.
-
- W. on a random line bet. secs. 18-19.
- 40.00 Set temp. $1/4$ sec. cor.
- 78.25 Intersect W. bdy. of Tp. 3.82 chs N. of cor. of secs. 13-24. T. 9 S, R. 15 E.
- Set a granite stone 6 x 9 x 18 ins. 12 ins. in the ground for C.C. to secs. 18-19, marked C.C. on the E.; with 6 notches on the E. and 3 notches on the N. & S. edges; dig pits, 18 x 18 x 12 ins. in secs. 18-19, 5- $1/2$ ft. dist. and raise a mound of earth 3 ft. base 1- $1/2$ ft. high E. of cor.
- Thence I run, E. on a true line bet. secs. 18-19.

Chains

Descend hill sloping S.E.
 6.00 Wash, 5 lks. wide, bears N.E.
 7.90 Wash, 15 lks. wide, bears N.W.
 26 80 Top of prominent ridge, bears N.
 36 90 Wash, 10 lks. wide, bears N.
 38.25 Set a granite stone 5 x 12 x 20 ins. 15 ins. in the ground for 1/4 cor. bet/secs. 18-19. marked 1/4 on N. face; raise a mound of stones 2 ft. base, 2 ft. high. N. of cor. Pits impracticable.
 45 20 Prominent ridge bears N. Descend.
 62.00 Wash, 10 lks. wide, bears E.N.E. Proceed down the right bank of same wash through dense mesquite and catsclaw.
 77.00 Spur bears N.E. Leave dense mesquite.
 78.25 The cor. of secs. 17-18-19-20.
 Land sharply rolling; soil 3rd and 4th rates; timber undergrowth of mesquite, catsclaw and cacti.
 Mountainous land, 78.25 chs. Dense undergrowth of 15 chs.

October 14th, 1904.

Boundaries of T. 9S., R. 16 E.
 Latitudes, departures and closing errors.

Line designated	True b'r'g	Dist.	Latitudes		Departures	
			N.	S.	E.	W.
		Chs.	Chs.	Chs.	Chs.	Chs.
Mile bet. secs. 19-24	S. 01 03' E	80.09		80.08	1.46	
T. 9 S. R. 16-17 E.	S. 01 28' E	39.98		39.97	1.02	
N. 1/2 mile bet. secs. 25-30	S. 00 34' E	40.22		40.22	0.40	
T. 9 S. R. 16-17 E.	S. 01 02' E	39.95		39.94	0.72	
S. 1/2 mile bet. secs. 31-36	S. 00 52' E	40.05		40.04	0.60	
T. 9 S. R. 16-17 E.	West	478.45				478.45
N. bdy. T. 10 S. R. 16 E.	North	79.95	79.95			
Mile W. of sec. 31	North	80.07	80.07			
T. 9 S. R. 16 E.	North	79.90	79.90			
Mile W. of sec. 30	East	78.25			78.25	
Mile bet. secs. 18-19	S. 89 56' E	80.06		0.10	80.06	
Mile bet. secs. 17-20	East	79.92			79.92	
Mile bet. secs. 16-21	N. 89 59' E	80.02	0.02		80.02	
Mile bet. secs. 15-22	East	79.94			79.94	
Mile bet. secs. 14-23	N. 89 50' E	75.84	0.23		75.84	
Mile bet. secs. 13-24					0.23	
Convergence			240.17	240.35	478.46	478.45
Totals				240.17	478.45	
Errors				.18	.01	

Description of T. 9 S., R. 16 E.

The subdivisional lines embrace sharply rolling land covered with a scattered undergrowth; grazing is fair; water can be obtained by sinking wells a short distance in the beds of the washes.

The southern part of sec. 31 is covered with oak timber. There is one settler in each of the following sections: 30-31-33, and two in sec. 32.

William B. Alexander
U.S. Deputy Surveyor

October 24, 1907.

LIST OF NAMES.

A list of the names of the individuals employed by BOOK 1838

....., United States Deputy Surveyor, to assist in running, measuring, and marking the lines and corners described in the foregoing field notes of the survey of

showing the respective capacities in which they acted:

See Dub. T. 10 P. 166. [Handwritten signature]

-, *Chainman.*
-, *Chainman.*
-, *Moundman.*
-, *Moundman.*
-, *Axman.*
-, *Axman.*
-, *Flagman.*

FINAL OATH OF ASSISTANTS.

We hereby certify that we assisted

....., United States Deputy Surveyor, in surveying all those parts or portions of the

..... of the meridian, of

....., which are represented in the foregoing field notes as having been surveyed by him and under his direction; and that said survey has been in all respects, to the best of our knowledge and belief, well and faithfully surveyed, and the corner monuments established, according to the instructions furnished by the United States Surveyor General for

See Book [Handwritten signature]

-, *Chainman.*
-, *Chainman.*
-, *Moundman.*
-, *Moundman.*
-, *Axman.*
-, *Axman.*
-, *Flagman.*

Subscribed and sworn to before me this day of, 189 }



BOOK 1838

FINAL OATH OF UNITED STATES DEPUTY SURVEYOR.

I, _____, United States Deputy Surveyor, do solemnly swear that, in pursuance of a contract received from _____ United States Surveyor General for _____, bearing date of the _____ day of _____, 189 _____, I have well, faithfully, and truly, in my own proper person, and in strict conformity with the instructions furnished by the United States Surveyor General for _____, the Manual of Surveying Instructions, and the laws of the United States, surveyed all those parts or portions of _____

See Book "F"

_____ of the _____ meridian, in the _____ of _____, which are represented in the foregoing field notes as having been surveyed by me, and under my direction; and I do further solemnly swear that all the corners of said survey have been established and perpetuated in strict accordance with the Manual of Surveying Instructions, and the special written instructions of the United States Surveyor General for _____ and in the specific manner described in the field notes, and that

BOOK 1838

Subscribed by **Subscribed by said William B. Alexander, and sworn to before me this 5th day of March, A.D. 1906.**

Clinton D. Hoover
Clerk of U.S. District Court,
First Judicial District, Arizona

The foregoing field notes of the survey of *the subdivisional lines of the South Eighteen Sections of T. 9. S. R. 16. E. of the Gila and Salt River Base and Meridian, in the Territory of Arizona*

executed by *Wm B. Alexander, U.S.D.S.* under his contract No. *117*, dated *June 13th 1904*, 189 _____, having been critically examined, and the necessary corrections and explanations made, the said field notes, and the surveys they describe, are hereby approved.

Frank J. Fitzgerald
United States Surveyor General.

I certify that the foregoing transcript of the field notes of the above-described surveys in _____, has been correctly copied from the original notes on file in this office.

United States Surveyor General.