

Receipt Lt. 12/07
E.V.

1851-
Book "B"

BOOK 1851

FIELD NOTES

OF THE SURVEY OF THE

Subdivision

of
Township 1 South Range 13 East

and the

Retracement

of the

Gila and Salt River Base Line

through

Range 13 East.

1851

of the *Gila and Salt River Base and Meridian,*

AS SURVEYED BY

Alexander B. Titus, Compassman, United States Deputy Surveyor,

Under his Contract No. *81*, dated *May 23rd*, *1901*

Survey commenced *May 9th*, *1895*

Survey completed *June 10th*, *1905*

NAMES AND DUTIES OF ASSISTANTS.

Orlando E. Sowers Chairman

Daniel Hayes Chairman

Robert Jones Moundman

Geo. Huber Moundman

Ross Daley Axeman

Thomas Judge Axeman

Frank Wash Flagman

BOOK 1851

INDEX DIAGRAM.

Township *1 South*, Range *13 East*

47	48	49	50	52	51					
6	5	4	3	2	1					
					16					
7	8	9	10	11	12					
46	45	37	30	23	14					
18	44	17	36	16	29	15	22	14	13	13
44	43	35	28	21	13					
19	43	20	35	21	27	22	20	23	12	24
42	41	34	26	19	11					
30	40	29	33	28	26	27	19	26	10	25
40	39	32	25	18	10					
31	38	32	31	33	24	34	17	35	9	36

Meanders Page.....

PRELIMINARY OATHS OF ASSISTANTS.

WE, Orlando E. Sowers and Daniel Hayes
do solemnly swear that we will well and faithfully execute the duties of chainmen; that we will level the chain over even and uneven ground, and plumb the tally pins, either by sticking or dropping the same; that we will report the true distances to all notable objects, and the true lengths of all lines that we assist in measuring, to the best of our skill and ability, and in accordance with instructions given us, in the survey of

Exterior and Subdivision of J. S. R. 13 E. G and S. R Meridian

Orlando E. Sowers, Chainman.
Daniel Hayes, Chainman.

Subscribed and sworn to before me this 7th
day of April, 1905



My commission expires Mar. 3, 1908
Francis B. Jacobs
Notary Public

WE, Robert Jones and Geo Huber
do solemnly swear that we will well and truly perform the duties of moundmen in the establishment of corners, according to the instructions given us, to the best of our skill and ability, in the survey of

Exterior and Subdivision of J. S. R. 13 E. G and S. R Meridian

Robert Jones, Moundman.
Geo Huber, Moundman.

Subscribed and sworn to before me this 7th
day of April, 1905



My commission expires Mar. 3, 1908
Francis B. Jacobs
Notary Public

WE, Ross Daley and Thomas Judge
do solemnly swear that we will well and truly perform the duties of axmen in the establishment of corners and other duties, according to instructions given us, to the best of our skill and ability, in the survey of

Exterior and Subdivision of J. S. R. 13 E. G and S. R Meridian

Ross Daley, Axman.
Thomas Judge, Axman.

Subscribed and sworn to before me this 7th
day of April, 1905



My commission expires Mar. 3, 1908
Francis B. Jacobs
Notary Public

I, Frank Nash, do solemnly swear that I will well and truly perform the duties of flagman according to instructions given me, to the best of my skill and ability, in the survey of

Exterior and Subdivision of J. S. R. 13 E. G and S. R Meridian

Frank Nash, Flagman.

Subscribed and sworn to before me this 30
day of April, 1905



Alexander B. Titus
Compassman

Survey Commenced May 9th 1905 and executed with a H. and D. C. Gurley light mountain transit, not numbered, with Durst's improved solar attachment, the horizontal limb having two double verniers, placed opposite to each other, reading to single minutes of arc; which is also the least count of the latitude and declination arcs.

The instrument was examined, tested on the true meridian at Phoenix, Arizona, found correct and was approved by the Surveyor General of Arizona Territory. I examine the adjustments of the transit and find them correct; then to test the solar apparatus by comparing its indications, resulting from solar observations made during a.m. and p.m. hours, with the meridian determined by observation on Polaris I proceed as follows—

May 9th 1905. At my camp at Pinal ranch lat. $33^{\circ}20'$ N. long. $111^{\circ}03'$ W., at 8^h a.m. l.m.t. I set off $17^{\circ}18'$ on the decl. arc, $33^{\circ}20'$ on the lat. arc and mark a point in the meridian determined with the solar by a cross on the stone set April 7th 1905, 5 chains N. of my station; the mark falls 0.3" ins E. of the meridian established by the Polaris observation—on April 7, 1905.

May 9th at 4^h p.m. l.m.t. I set off $17^{\circ}23'$ on the decl. arc, $33^{\circ}20'$ on the lat. arc and mark a point in the meridian determined with the solar, by a cross on the stone already set 5 chains N. of my station, which falls 0.2 ins. west of the meridian, established by Polaris observation.

The solar apparatus by a.m. and p.m. observations defines position for meridian respectively about 16" east and 10" west of the meridian established by Polaris observations, therefore, I conclude that the adjustments of the instrument are satisfactory.

The magnetic bearing of the true meridian at 8^h 30^m a.m. is N. 13° W.; the angle thus determined gives the magnetic declination of 13° East.

Chains

At the corner of Secs. 1, 2, 35 and 36 on the S. bay, of the tp. which is a trachite stone 12x8x6 ins. above ground, firmly set and marked, witnessed and described in the notes of the South bay of the tp. - May 9th 1905 at 8 a.m. l.m.t. I set off ^{33° 17' 17"}~~33° 18'~~ on the lat. arc. and 17° 18' N. on the decl. arc. and determine a true meridian with the solar. The Magnetic bearing of the true meridian at 8:30 a.m. is N. 13° W. the angle thus determined, reduced by the table, page 100 gives the mean magnetic decl. 13° E.

From the ^{cor. above} tp. prescribed I run N. 0° 01' W. bet. secs. 35 and 36 over rough mountainous land. ascend
9.60 Ridge bears E. and W.

Descend
18.00 Gulch Course ~~E. & S. W.~~ S. W.
Ascend

34.60 Ridge bears ~~N. & S. W.~~ NE and SW.
Descend

42.00 Falls on rock in place 6x6x4 ft. above ground
I cut a cross + at the exact cor. point for 1/4 sec. cor. marked 1/4 on W. side of cross. from which
An Oak 10 ins. in diam. bears S. 31° 15' E. 117 lks. dist.
Mkd 1/4 S. 35 B.T.

A Juniper 6 ins. in diam. bears N. 58° 14' W. 204 lks. dist.
Mkd 1/4 S. 35 B.T.

43.00 ~~Gulch~~ Course S. W. Ascend

70.77 High Ridge bears N. E and S. W. descend.

80.00 Falls on rock in place 6x5x2 ft. above ground
I cut a cross + at the exact cor. point for corner of secs. 25, 26, 35 and 36 marked with 1 notch on S and 1 notch on E. sides of cross; and raise a mound of stone 2 ft. base, 1/2 ft. high N. of cor.

Pits unpracticable ~

A Juniper 6 ins in diam. bears S. 81° 30' W. 170 lks. dist.

Mkd. T. 1 S., R. 13 E. S. 35 B.T.

no other trees within limits
Land Mountainous and rough

Soil light and thin; 1/4th rate

Timber scattering - scrub Oak and Juniper

Mountainous Land

80.00 chains

Chains S. 89° 55' E. on a random line bet Secs 25 and 26
 40.00 Set temp 1/4 Sec. cor.
 79.90 Intersect E. bdy of the 14 links N. of cor. of Secs 25, 30, 31 and 36
 Thence I run
 N. 89° 49' W. on a true line bet. secs. 25 and 36
 over mountainous land, ascend
 15.30 Ridge bears N. and S. Descend
 36.00 Gulch Course S. W. Ascend
 39.95 Falls on rock in place 4 x 4 x 1 1/2 ft. above ground
 I cut a cross+ at the exact cor. point for 1/4 sec. cor.
 mtd 1/4 on N Side of cross; and raise a mound of
 stone 2 ft. base 1 1/2 ft. high N. of cor. Pits impracticable,
 From which an oak 5 ins. in diam bears S 63° 40' W. 144 lks. dist.
 mtd 1/4 S 36 B.T. No other trees within limits
 Ascend
 45.50 Top of mountain covered with large boulders bears N. E. ^{or} S W
 Descend
 66.00 Gulch course S. W.
 Ascend
 75.00 Ridge bears N. 20° E and S 20° W.
 Descend
 79.90 The corner of Secs 25, 26, 35 and 36
 Land mountainous and very broken
 Soil rocky; 4th rate
 Timber scattering - scrub oak
 Mountainous Land
 79.90 Chains
 May 9th 1905

May 10
 N. 0° 01' W. bet. secs 25 and 26
 over mountainous land - descend
 4.70 Gulch Course S. 30° W.
 Ascend along S.E. slope of high ridge
 26.20 Flat top ridge bears N. E. and S. W.
 30.30 Descend steep hill side
 40.00 Falls on boulder 5 x 3 x 2 ft. above ground, I cut a cross+
 at the exact cor. point for 1/4 sec. cor. mtd 1/4 on W. side
 of cross; and raise a mound of stone 2 ft. base 1 1/2 ft.
 high N. of cor. Pits impracticable. from which
 A Juniper 8 ins. in diam. bears S. 39° 30' E. 24 lks. dist.
 Marked 1/4 S 25° B.T. No other trees within limits
 at this 1/4 cor. at 10^{am} I set off 17° 30' on decl arc.
 33° 19' on lat. arc. and determined a true mer with the solar

Chains
 44.60 Gulch Course S. W.
 Ascend
 55.30 Saddle on ridge bears N. E. and S. W.
 Descend
 65.30 Enter deep Gulch 30 lks wide Course S. 10° W.
 68.30 Leave Gulch ascend steep hill
 80.00 Set a trachite stone 30 x 12 x 4 ins. in mound of
 stone for cor of secs. 23, 24, 25 and 26 mkd with
 2 notches on S. and 1 notch on E sides; and raise a
 mound of stone 2 ft. base 1 1/2 ft. high N. of cor.
 Pits impracticable
 Cor. is located on W. side of deep gulch, Course S. W.;
 high boulders on N. and W. of cor.
 Land mountainous
 Soil light and rocky; 14th rate
 No Timber
 Mountainous land 80.00 Chains

S. 89° 49' E. on a random line bet. secs. 24 and 25
 40.00 Set temp. 1/4 sec. cor.
 80.10 Intersect E. bdy of ~~the~~ S. of cor. of secs 19, 24, 25 and 30
 Thence I run
 N. 89° 56' W. on a true line bet. ~~secs~~ 24 and 25
 Over rough mountain land Ascend
 12.00 High ridge bears N. E. and S. W.
 23.80 Descend
 34.70 Deep Gulch Course S. W.
 40.05 Set trachite stone 20 x 12 x 10 ins ¹⁵ ins in the ground
 for 1/4 Sec. cor. mkd 1/4 on N. side; and raise a mound
 of stone 2 1/2 ft. base 3 ft high N. of cor.
 Pits impracticable. From which
 A Juniper 4 ins in diam. bears S. 53° 30' W. 99 lks. dist
 Mkd. 1/4 S 25 BT No other trees within limits
 Ascend
 45.00 Ridge bears N. and S.
 Descend
 49.50 Swale
 Ascend
 56.00 High ridge bears N. and S.
 Descend

Subdivision of T. 1 S., R. 13 E.

Chains
 76.00 Gulch Course S. W. ascend.
 80.10 The cor. of recs. 23, 24, 25 and 26
 Land mountainous
 Soil light; 4th rate
 No Timber
 Mountainous Land 80.10 Chains
 May 10th 1905

May 11, 1905.
 N. 0° 01' W. bet. recs. 23 and 24
 over mountain lands. Ascends
 11.50 Ridge bears N. E and S. W.
 Descend along N. slope of ridge
 40.00 Set trachite stone 22 x 12 x 5 ins. 16 ins in the ground
 for 1/4 sec. cor. mkd. 1/4 on W. face. from which
 A Juniper 20 ins in diam, bears N. 89° 40' E 102 lks. dist.
 Mkd. 1/4 S 24 B.T.
 A Juniper 8 ins in diam, bears S 29° 45' W. 137 lks. dist
 Mkd. 1/4 S 23 B.T.
 53.80 Head of Long Draw Course S 20° W.
 57.80 Ascend slightly to low pass
 Descend; follow down gulch course N.
 65.60 Enter thicket of Cedar, Oak and brush
 77.10 on E. side of gulch
 80.00 Set a trachite stone 24 x 12 x 4 ins. 18 ins, in the ground
 for cor. of recs. 13, 14, 23 and 24 mkd with 3 notches
 on S and 1 notch on E. edges from which
 A Juniper 12 ins in diam, bears N. 53° E 135 lks. dist.
 Mkd. T. 1 S., R. 13 E. S 13 B.T.
 An Oak 10 ins in diam bears S 50° 45' E 42 lks. dist.
 Mkd. T. 1 S., R. 13 E S 24 B.T.
 An Oak 14 ins in diam bears S. 12° 30' W. 91 lks dist.
 Mkd. T. 1 S., R. 13 E S 23 B.T.
 An Oak 12 ins in diam, bears N. 0° 15' W. 27 lks. dist.
 Mkd. T. 1 S., R. 13 E S 14 B.T.
 Land mountainous and brushy
 Soil thin; 4th rate
 Timber, Juniper and Oak with underbrush -
 manzanita, scrub oak and buckbrush
 Mountainous Land, Dense Undergrowth 80.00 Chains.

Chains May 11th 1905. At 2¹/₂ p.m. l.m.t. set off 33°20' on the lat arc. and 17°53' on the decl arc. and determine a true meridian with the solar.

S. 89°56' E. on a random line bet Secs. 13 and 24

40.00 Set temp. 1/4 sec. cor

80.00 Intersect E. bdy of tps. 30 lks N. of cor. of secs 13, 18, 19 and 24

Thence I run

N. 89°43' W. on a true line bet Secs 13 and 24 over rough broken land along N. slope of Hutton's Mountain. Descend

25.00 Gulch course N. ascend.

29.60 White ridge bro. N. and S. spur of Hutton's butte

40.00 Set trachite stone 18x10x6 ins. 12 ins in the ground for 1/4 sec. cor. marked 1/4 on N. side from which, an Oak 5 ins. in diam. bro. S. 37°40' W. 139 lks dist. marked 1/4 S 24 B.T.

A Juniper 6 ins in diam. bro. N. 40°50' W 25 lks dist. marked 1/4 S 13 BT

From this cor. the chimney on the N. end of dwelling house, Oval ranch bro. N. 6°20' W.

N.W. Cor. Orchard fence bro. N. 7°40' E.

Signal mountain bro. N. 28°30' W.

Ascend steep hill

55.40 Top of round top mountain 250 ft. high

Descend rapidly

69.50 Break of hill

80.00 The Cor. of Secs 13, 14, 23 and 24

Land rough and mountainous

Soil thin; 1/4th rate

Timber scattering

Mountainous land 80.00 Chains

May 11th 1905

May 17. At this cor. at 7 a.m. l.m.t. set off 18°5' on decl arc 35°20' on lat arc and determine a true mer. with the solar.

N. 0°1' W bet. Secs 13 and 14

over rolling lands, through thick growth of cedar, oak and juniper. from 6 ins to 3 ft. diam.

Descend slightly into rocky flat

1.50 Gulch course N. 10 W.

11.51 Trail from the Superior Mine to Glad bro. E and W

14.08 Wire fence (Brs. E. and W. (Iron and crows)

16.70 Wash 20 lks wide Course N.

17.70 Leave timber and enter small opening flat

Chains

31.30 Leave flat. Ascend hillside covered with boulders,
 39.00 Stone Wall bro. E and W. Iron^d Craig's Mountain pasture
 40.00 Falls on stone in place 36 x 24 x 8 ins. above ground
 I cut a cross + at the exact ^{cor.} point for 1/4 sec. cor.
 marked 1/4 on W. side of cross; and raise a mound
 of stone 2 1/2 ft. base 2 ft. high W. of cor.
 Pits impracticable From which
 A Juniper 5 ins in diam. ^{base} N 81° 25' W.
 188 lbs dist marked 1/4 S 1/4 B.T. No other trees
 within limits
 Ascend along W slope of Signal Mountain
 51.50 Spur of Signal Mountain bro N.E. and S.W.
 58.00 Deep gutch Course S.W.
 Ascend steep hillside covered with loose boulders
 80.00 Set a trachite stone 24 x 12 x 10 ins 18 ins in
 mound ^{of stone} for cor. of sec's 11, 12, 13 and 14 marked with
 4 notches on the S and 1 notch on the E. sides;
 and raise a mound of stone 2 ft. base 1 1/2 ft. high
 W. of cor. Pits impracticable
 Land mountainous
 Soil light and thin - 1st rate - 60 chains
 Gravel and loam 2nd rate 20 "
 Timber: Oaks and Juniper and dense undergrowth
 Heavy Timber, Dense Undergrowth and
 Mountainous Land 80,100 chains

S. 89° 43' E. on a random line bet. sec's 12 and 13
 40.00 Set temp 1/4 sec. cor.
 80.20 Intersect E. bdy. of tps. 13 ^{4 sec's} S. of cor. of 12, 13 and 18
 Thence I run
 N. 89° 49' W. on a true line bet. sec's 12 and 13
 over rolling land, through dense undergrowth
 14.80 Wagon road from Pinal ranch to ~~the~~ bro. N.E. and S.W.
 29.00 Ascend gradually Trail bro. N and S.
 40.00 Set a trachite stone 20 x 12 x 11 ¹⁵ ins in the
 ground marked for 1/4 sec. cor. marked 1/4 on W. face
 from which; An Oak 8 ins in diam. ^{base} S. 77° 30' E.
 118 lbs dist. marked 1/4 S 1/4 B.T.
 A Juniper 16 ins diam. ^{base} N 81° 45' W.
 43 lbs dist. ^{marked} 1/4 S 1/4 B.T.
 Ascend

chains	
41.70	Leave brush and trees
53.00	A low pass bcs. N. and S. Descend
61.20	Gulch Course S.W. Ascend along S. slope of hillside covered with boulders
80.20	The cor. of Sec's 11, 12, 13 and 14 Land 40 chns rolling with dense under brush 40 " mountainous with under brush Soil 2nd and 4th rate Timber Juniper, Oak - Mountainous and dense undergrowth 80.00 Chns
May 13.	at this cor. at 7 a.m. l.m. + 9 set off 18° 20' from decl arc and 133° 21' from lat arc and determined a true mer. with the solar IT 9° 1' W. but sec's 11 and 12 Over rough mountainous land through scattering timber and brush - ascend
3.25	On ridge bcs E. and W.
7.40	In saddle bcs. E and W. Descend
16.00	Gulch Course S. 76° W. ascend
22.50	Ridge bcs. N.E. and S.W. Descend
27.90	Gulch Course S.W. ascends
38.00	Top of high ridge bcs E and W.
40.00	Falls on stone in place 8x5x3 ft above ground I cut a cross + at the exact ^{cor.} point for 1/4 sec. cor. marked 1/4 on W side of cross; and raise a mound of stone 2ft base, 1 1/2 ft high 1/4 of cor. Pits impracticable. from which A Juniper 10 ins diam. bcs. S 64° 15' E no other trees within limits 84 lbs dish marked 1/4 S 12 BT Descend
	Gulch Course W. Ascend over small loose boulders
61.00	On ridge bcs. E. and W.
73.00	Enter dense growth of Manzanita
80.00	Set a trachite ^{stone} 18x14x5 ins 12 ins in the ground marked with 5 notches on the S and 1 notch on E. edges raise mound of stone 2ft. base 1 1/2 ft high 1/4 of cor. Pits impracticable. from which A Pine 5 ins diam bcs. N. 52° E 4 lbs dish marked T 13 R 13 E S 1 E T

1-2-11-12

chains
 no other trees within limits
 Cor. is located in heavy mangrove thicket, near
^{N. edge}
 Land mountainous and rough
 Soil, light; 4th rate
 Timber scattering
 Mountainous Land dense undergrowth 80.00 chains

S 89° 49' E on a random line bet. recs. 1 and 12
 40.00 Set temp. 1/4 sec. cor.
 80.16 Enter east E. body of the 12 lks N of cor. of Secs 1, 6, 7 and 12
 Thence run
 N. 89° 49' W. on a true line bet. recs. 1 and 12
 over rough, mountainous land through brush
 2.80 Descend
 8.00 Gulch Course N. W. ascend
 18.60 Ridge bro N. and S.
 Descend steep hillside
 31.20 Powers gulch Course N.
 31.60 Trail to Pinto Creek bro. N. and S.
 37.80 Ascend steep hillside. Enter dense undergrowth
 40.08 Set a trachite stone 22 x 10 x 4 ins ¹⁵⁷ 1/4 ins in the ground
 for 1/4 sec. cor marked 1/4 on N. face; from which
 an oak 6 ins diam. bro N. 26° 20' E. 20 lks. dist.
 marked 1/4 S 1 B.T.
 An oak 5 ins diam. bro S. 36° 35' W. 42 lks. dist.
 marked 1/4 S 12 BT
 Cor. is located on S side small gulch; Course E.
 Ascend through dense undergrowth
 52.80 An spur of high mountain sloping E.
 60.00 Top of mountain 700 ft. high, bro N. and S.
 Descend down gulch course W.
 80.06 The cor. sec's 1, 2, 11, and 12
 Land mountainous and rough
 Soil. 4th rate
 Timber - scattering oak
 Mountainous Land and dense undergrowth

East chains -

May 13th 1905

May 15, 1905

The land north of this cor. is impracticable to survey
 on account of high rough mountains and deep gulches.
 I return to S. bay of the

Chains From the Cor. of Sec's 2, 3, 34 and 35 which is a trachite stone firmly set in a mound of stone marked and witnessed as described in the notes of the S. bdy. of tp. May 15th I determine true mer. at this cor. at 8^h 30' l. W. & I set off 18^h 49' N on decl. arc and 33^h 14' on lat. arc and determined a true mer. with the solar N. 0^h 2' W. bet sec's. 34 and 35

over mountainous, rough land

0.85 Low ridge bears E. and W.
Descend

17.60 Gulch Course W.
Ascend

20.38 Top of high ridge bears E and W.

21.30 Edge of steep descent

27.80 Head of Gulch course W.
Ascend over rough land

38.60 Ridge bro N.E. and S.W.

40.00 Falls on stone in place 18 x 12 x 6 ins above ground
I cut a cross at the exact cor. point for 1/4 S. cor marked 1/4 on W. side of cross; from which
An Oak 10 ins diam bears N. 74^h 40' E. 128 lks dist. marked 1/4 S. 35 BT
An Oak 8 ins diam bears S 85^h 15' W 121 links dist. marked 1/4 S 34 BT
Descend

52.00 ~~Head~~ of gulch course S.W.
Ascend

63.40 steep cliffs 40 ft high

78.74 Top of ridge covered with large boulders descend

80.00 Set a trachite stone 20 x 12 x 6 ins ¹⁵ ins in the ground for cor. of sec's 26, 27, 34 and 35 marked with 1 notch on S and 2 notches on E. edge; and raised mound of stone 2 1/2 ft base 1 1/2 ft high W. of cor; from which Pts impracticable
An Oak 10 ins diam bears S 23^h 45' W 112 lks dist. marked T 1 S R 13 E S 34 BT
A Juniper 5 ins diam bears N. 8^h 45' W. 111 lks dist. marked T 1 S R 13 E S 27 BT No other trees within limits
Land, mountainous
Soil; 4th rate
Timber scattering Juniper and oak
Mountainous land

to chains

7/15/1851

chains S 89° 55' E on a random line bet secs 26 and 35
 40.00 Set temp. 1/4 sec. cot
 79.76 Intersect N and S line 10 links S of cot of secs 25, 26
 35 and 36
 Thence I run
 N. 89° 59' W. on a true line bet secs. 26 and 35
 Over mountainous land
 Descend
 3.20 Gulch course S.W.
 Ascend steep hillside
 17.40 High ridge bears N.E. and S.W.
 Descend
 28.00 Deep gulch course S.W.
 Ascend
 36.00 Ridge bears N and S
 39.88 Set a trachite stone 20x12x4 ins ¹⁵ ins in the ground
 marked 1/4 on N. face; and raised a mound of stone
 2 1/2 ft. base 1 1/2 ft high N of cot.
 Pits impracticable.
 Descend
 45.00 Bottom of Long Draw course S. 4 chns. wide
 ascend
 52.40 Foot of bluff ⁴ ft. high bears N and S
 56.30 Top of bluff
 64.50 Top of high ridge bears N and S descend
 71.00 Gulch course S.
 Ascend
 77.40 Top of mountain bears N and S 400 ft high
 Descend
 79.76 The cot of secs 26, 27, 34 and 35
 Land mountainous cut with deep gulches
 Soil, ^{1/2} ~~1/2~~ ^{1/2} ~~1/2~~
 Timber, scattering oak and juniper
 Mountainous Land 79.76 chns
 May 15th 1905

230/18

May 17th 1905. At 7:30 a.m. cont. I set off ^{33° 18' 17"} on lat.
 arc: 19° 17' N. on decl. arc and determine a true mer
 idian with the solar. at cor. of 26, 27, 34, and 35

Chains	N. 0° 1/2 W. bet. sec's 26 and 27 over mountainous land Ascend
21.70	Low Knoll Descend
14.40	Gulch course S.W. Ascend
32.62	Spur of high ridge bears N.E. and S.W.
34.83	Descend over land covered with boulders
40.00	Set trachite stone 24x12x10 ins ¹⁸ in the ground for 1/4 sec. cor. marked 1/4 on W. face; and raise a mound of stone 2 ft. base 1 1/2 ft high, W. of cor. Pits impracticable. Ascend
55.00	Round mountain with small oak trees on top
56.80	Descend steep rocky hillside
66.30	Deep gulch course N.W. Ascend
79.60	Top of high ridge bears E. and W. descend.
80.00	Set a trachite stone 24x14x5 ins on bedrock in mound of stones for cor. of sec's. 22, 23, 26 and 27 marked with 2 notches on S. and E. edges; and raise a mound of stone 2 ft. base 1 1/2 ft high W. of cor. Pits impracticable. Land mountainous and rough Soil - 14 th rate Timber scattering oak and juniper Mountainous land 80 chains
40.00	S. 89° 59' E. on a random line bet. sec's 23 and 26 Set temp. 1/4 sec. cor.
79.88	Intersect N and S line 31 lks N. of Cor. of sec's 23, 24, 25 & 26 Thence I run N 89° 46' W. on a true line bet. sec's 23 and 26 over mountainous land
3.00	Rocky swale Ascend
9.10	Top of ridge bears N. and S. Descend
19.60	"Long Draw" Course S.W. Ascend over rough broken land

chains	
31.50	Cliff of high rocks standing on end
39.94	Set a trachite stone 18x8x4 ins 12 ins in the ground for $\frac{1}{4}$ Sec. cor. marked $\frac{1}{4}$ on N. face, from which An Oak 10 ins diam. bears $S 19^{\circ} 40' W$ 180 lks dist. marked $\frac{1}{4} S 26^{\circ} BT$ An Oak 6 ins diam bears $N 73^{\circ} 20' W$ 109 lks dist. marked $\frac{1}{4} S 23^{\circ} BT$
	Ascend over rough broken land
54.00	Tops of high ridges bears N and S Descend
64.40	Head of gulch course S. W. Ascend
69.50	High ridge bears N. E. and S. W. Descend.
79.88	The cor. of secs. 22, 23, 26 and 27 Land mountainous and broken Soil - $\frac{1}{4}$ rate No Timber Mountainous land
	79.88 Chains May 17 th 1905
	May 18 th
	$N 0^{\circ} 2' W$ bet. Secs. 22 and 23 Over mountainous land Descend
5.04	Gulch course $S. 70^{\circ} W$ Ascend
24.10	Tops of high ridges bears E. and W. Descend steep hillside covered with rocks
33.00	Deep gulch Course W. Ascend
38.40	On W. slope of ridges bears E and W.
40.00	Falls on rock in place 24x18x8 ins above ground I cut a cross at the exact cor. point for $\frac{1}{4}$ Sec. cor. marked $\frac{1}{4}$ on W. side of cross; and raised a mound of stone 2 ft base $1\frac{1}{2}$ ft high W. of cor. Pit impracticable. Descend rapidly
47.50	Deep gulch Course $S. 80^{\circ} W$ ascend
58.50	Ridge bears E and W.
67.00	Descend steep hill
79.15	Gulch Course $S. 80^{\circ} W$ Ascend

chains

82.00

JK ✓

Falls on rock bench 20x15x6ft above ground
I cut a cross+ at the exact cor. point for cor of sec.
14, 15, 22 and 23. marked with 3 grooves on S and
2 grooves on E. sides of cross; and raised a mound
of stone 2ft. base 1 1/2 ft high N. of cor.
Pits impracticable.

Cor. falls on rock bench N. side of gulch about 30ft
up.

Land mountainous and broken with deep gulches.

Soil rocky - 14th rate

Timber scattering oak and Juniper

Mountainous land 80.00 Chains

at this cor. at 2nd P.M. L.M. + 9 set off 19° 33' N on decl arc
133° 20' N on lat arc. and determine a true mer. with the solar
S. 89° 46' E. on a random line bet secs. 14 and 23

40.00 Set temp. 1/4 sec. cor.

79.80 Intersect N and S line 23 lks S of cor. of. sec. 13, 14, 23 and 24.

Thence I run

N. 89° 56' W. on a true line bet. sec. 14 and 23

Over broken mountainous land

0.30 Wash 20 lks wide course N

around steep bank

12.93 ridge bears N and S.

Descend over rough broken land.

27.50 Ascend gradually over boulders and bed rocks

38.94 High cliff, 30 lks right bears N.

39.90 Falls on rock in place 36x24x8 ins above the ground

JK ✓

I cut a cross+ at the exact cor. point for 1/4 sec. cor
marked 1/4 on N. side of cross; and raised a mound
of stones 2ft. base 1 1/2 ft. high N. of cor.

Pits impracticable. From which

an oak 5 ins diam. bears S 23° 50' W 69 lks dist.

marked 1/4 S. 23 BT, no other trees within limits

Ascend over broken country

57.60 On S. slope of high round hills near top

Descend

72.60 On low spur bears N and S.

74.50 Gulch course S. 85° W.

79.80 The cor. of sec. 14, 15, 22 and 23.

Land mountainous and broken.

Soil rocky - 14th rate. Timber scattering oak

Mountainous land 79.80 Chains

Chains May 19, 1905
 At this cor. at 7th A.M. L.M.T. I set off 19th 49' N on ded. arc and 33rd 20' N on lat arc and determine a true mer. with ~~draw~~ $\text{N. } 0^{\circ} 1' \text{ W}$ bet sec's 14 and 15

ascend
 5.00 Top of high ridge bars E and W
 descend
 8.10 Steep descent
 15.00 Superior and Globe trail bars E and W
 15.85 Gulch Course W.
 Ascend
 22.50 Old trail to Silver King mine bars E. and W.
 30.60 Top of ridge bars E. and W.
 Descend
 40.00 Set a trachite stone 20x9x6 ins. ¹⁵ ins in the ground for $\frac{1}{4}$ sec. cor. marked $\frac{1}{4}$ on W. face; from which an Oak 8 ins diam. bars $\text{N } 77^{\circ} \text{ E } 84$ lks dist. marked $\frac{1}{4}$ S 14 B.T.
 An Oak 5 ins diam. bars $\text{S } 84^{\circ} 15' \text{ W } 26$ lks dist marked $\frac{1}{4}$ S 15 BT
 The $\frac{1}{4}$ sec. cor. falls on little bench near head of small gulch
 descend
 46.80 Gulch Course S.W.
 Ascend
 56.30 Ridge bars E. and W.
 descend
 59.00 S. edge of gulch 400 ft. deep
 71.00 E. fork of Devils Cañon - deep gulch course W.
 Ascend
 80.00 Falls on rocks in place 10x4x2 ft. above ground I cut a cross + at the exact cor. point for cor of sec's 10, 11, 14 and 15 marked with 4 grooves on S and 2 grooves on E. side of cross; from which an Oak 8 ins diam. bars $\text{N } 55^{\circ} 45' \text{ E } 32$ lks dist marked T 1 S R 13 E S 11 BT
 An Oak 6 ins diam. bars $\text{S } 20^{\circ} 40' \text{ E } 89$ links dist. marked T 1 S R 13 E S 14 BT
 An Oak 10 ins diam. bars $\text{S } 20^{\circ} 40' \text{ W } 139$ lks dist. marked T 1 S R 13 E S 15 BT
 An Oak 8 ins diam. bars $\text{N } 32^{\circ} 55' \text{ W } 26$ lks dist marked T 1 S R 13 E S 10 BT
 Cor. is located on S side hill near head of small draw Course S.

Chains

Land mountainous and very rough
Soil rocky; 4th rate
Timber scattering Oak and Juniper
Mountainous Land 80.00 Chains

- 40.00 S. 89° 56' E. on a random line bet^{Secs} 11 and 14
Set temp. 1/4 sec. cot.
- 79.74 Intersect N and S line 9 lks. N. of cot. of sec's 11, 12, 13 and 14
Thence down
N. 89° 52' W. on a true line bet sec's 11 and 14
Over mountainous land
Ascend
- 11.60 Round mountain with Oak trees on top
Descend along N. slope of ridge
- 21.00 Broken land
- 36.40 Gulch Course S. 30° W.
Ascend
- 39.87 Det a trachite stone 22x10x4 ins. 15 ins in the ground
for 1/4 sec. cot. marked 1/4 on N face; from which
An Oak 5 ins diam. bears S. 11° 20' E. 99 lks dist
marked 1/4 S 14 BT
A Juniper 4 ins diam bears N 10° 50' W 63 lks dist.
marked 1/4 S 11 BT
- 42.00 Low ridge bears N. and S.
Descend
- 48.50 Gulch Course S. W.
Ascend
- 55.00 Ridge bears N and S
- 60.00 On S. crown of high ridge bears N and S
Descend steep hill
- 70.30 Small gulch, course S.
ascend S. slope of hill
- 73.60 Ridge bears N and S. descend
- 78.70 Head of small gulch Course S.
- 79.74 The cot. of Recs. 10, 11, 14 and 15
Land Mountainous
Soil rocky; 4th rate
Timber scattering Oak and Juniper
Mountainous Land 79.74 ~~80.00~~ Chains

May 19th 1905

Chains The land N of the Cor. of secs 10, 11, 14 and 15 I find impracticable to survey on account of high rough mountains and deep gulches. I return to cor. secs 3, 4, 33 and 34 on S. bay of the

333-17

May 20th 1905: At 8th am. l.m.t. I set off ^{33° 17' N} ~~33° 28'~~ on lat. arc: 19° 56' N. on decl. arc and determine a true meridian with solar at the cor. of secs 3, 4, 33 and 34.

From the corner of secs 3, 4, 33 and 34 on S. bay of the which is a rock in place marked witnessed and described in the notes of the S. bay I run

N. 0° 12' W. bet secs 33 and 34

over rough mountain land along W edge of Devils Cañon

- Ascend
- 2.70 Ridge bars ^{E and W} ~~N and S~~
- Descend over large boulders
- 14.00 Gulch course E. a branch of Devils Cañon
- Ascend
- 19.00 Rocky ridge bars E. and W.
- Descend rapidly over exposed bedrock
- 28.60 Deep rocky Cañon Course E. arm of Devil Cañon
- Ascend over exposed bedrock
- 40.00 Set a trachite stone 22 x 14 x 8 ins on bedrock in mound of stone for 1/4 sec. cor. marked 1/4 on W side; and raise a mound of stone 2 ft. base 2 1/2 ft high W. of cor. Pits impracticable -; from which an oak 6 ins diam. bears S 6° 30' W 61 lks dist marked 1/4 S 33 BT. No other trees within limits
- Descend
- 51.60 Gulch course E. arm of Devils Cañon
- Ascend rapidly
- 58.00 Ridge bars E. and W.
- 62.40 Steep Gulch Course E arm of Devils Cañon ascends
- 75.00 Rocky ridge bars E. and W. descends
- 80.00 Falls on rock in place 5 x 4 x 1 1/2 ft above ground. I cut a cross + at the exact cor. point for the cor. of secs 27, 28, 33 and 34 marked with 1 notch on S and 3 notches on E. of cross; and raise mound of stone 2 1/2 ft base 2 ft. high W. of cor. Pits impracticable. From which. An oak 5 ins diam. bears N. 57° E. 24 1/2 lks dist marked T 1 S R 13 E 33 BT

Chains An Oak 5 ins diam. bears $S 74^{\circ} 40' E$. 99 lks dist.
 No other marked trees within limits
 This mile is cut up by deep short canyons arms
 of Devil's Cañon and is very rough
 Land mountainous and rocky
 Soil rocky - Bedrock exposed in many places. 14th rate
 Timber sparse
 Mountainous land 80.00 Chains

$S 89^{\circ} 55' E$ on a random line bet. sec's 27 and 34
 40.00 Set. temp. $\frac{1}{4}$ sec. cor.
 49.70 Intersect N. and S. line 23 lks S of cor. of sec's 26, 27, 34 and 35
 Thence I run
 $S 89^{\circ} 55' W$. on a true line bet. sec's 27 and 34
 Over mountainous land
 Descend
 13.50 In gulch course S.W.
 Ascend
 20.70 Low saddle
 Descend
 26.50 Head of gulch course S.W.
 Ascend gradually over rough land covered with boulders
 37.00 Falls on boulder $10 \times 8 \times 4$ ft. above ground
 I cut a cross at the exact cor. point for $\frac{1}{4}$ sec
 cor. marked $\frac{1}{4}$ on N. side of cross; and raised a mound
 of stone 2 ft. base $1\frac{1}{2}$ ft. high N. of cor.
 This impracticable.
 Descend
 45.00 Gulch course S.W.
 Ascend
 53.50 Ridge bears N.E. and S.W.
 Descend
 63.00 E. edge Devil's Cañon
 70.00 Bottom Devil's Cañon course S. ascend.
 75.40 N. edge Devil's Cañon
 79.70 The cor. of sec's 27, 28, 33 and 34
 Land mountainous and broken
 Soil rocky; 14th rate
 No Timber
 Mountainous land 79.70 chains

May 20th 1905

March 22 1905.

33° 18' 21"

W 33 2 1/2

Archie Cor. I set off at 7 a.m. l.m. at 20° 21' N on decl arc. 33° 18' 21" on lat. arc and determine a true mer. with the solar.

77° 0' 21" W bet. sec's 27 and 28

Over broken land with bedrock exposed in many places

Ascend gradually along W. side of Devil's Cañon

8.20 on low rocky ridge bears E and W.

21.80 " " " " " " " "

Descend

35.00 Gulch course E.

40.00 Falls on rock in place 8 x 3 x 1/2 ft above ground

I cut a cross + at the exact cor point for 1/4 sec. cot.

marked 1/4 on W side of cross; and raise a mound

of stone 2 1/2 ft. base 2 ft. high W. of cot.

Pits impracticable -

55.00 Ascend slightly

77.10 Ridge bears E. and W.

Descend

80.00 Falls on rock in place 4 x 4 x 3 ft. above ground

I cut a cross + at the exact cor. point for cor of sec's

21, 22, 27 and 28 marked with 2 notches on S and

3 notches on E. sides of cross; and raise a mound

of stone 2 1/2 ft. base 1 1/2 ft. high W of cor

Pits impracticable

Cor. is located on S slope of steep rocky little cañon

running into Devil's Cañon near head

Land mountainous and broken

Soil rocky - 4th rate

No timber

Mountainous land. 80.00 Chains

77° 89° 55' E. on a random line bet. sec's 22 and 27

40.00 Set temp 1/4 sec. cot.

79.85 Intersect N and S line 203 lks S. of the cor. of Sec's 22, 23, 26 & 27

Thence I run

S 89° 49' W. on a true line bet. sec's 22 and 27

Over mountainous land

5.00 Descend steep slope

13.00 Rocky spur

22.50 Gulch course S 30° W

29.40 Ascend ridge bears N. 30° E and S. 30° W.

35.50 Ascend over boulders and broken land

chains

39.93

Falls on stone in place 48x36x12 ins above ground
I cut a cross + at the exact cor. point for 1/4 sec. cor.
marked 1/4 on N. side of cross; and raised a mound
of stone 2 ft. base 1 1/2 ft. high N. of cor.
Pits impracticable -

54.00

On E. side of Cañon Devils cañon
Descend steep rocky slope

65.00

Bottom of Devils cañon Course S.
Ascend steep slope

72.00

Low rocky spot
Ascend steep rocky draw leading into Devils Cañon
over large boulders and rough broken land. Course E.
The cor. sec. 21, 22, 27 and 28

79.85

Land mountainous and very rough
Soil rocky. 11th rate
No timber
Mountainous land

79.85 Chains
May 22nd 1905

May 23

At this cor. at 7:15 A.M. L.M.T. I set off 20.32 N on decl arc
and determine a true mer. with the solar.
70° 3' N. bet. sec. 21 and 22

03-19

Over rough mountain land
Descend

2.00

Bottom of steep rocky gulch Course E.
Ascend

11.00

Top of steep ascent
Ascend gradually over broken land

28.00

W. rim Devils Cañon 4 chs. E. Cañon turns N.E.

33.00

Ridge covered with boulders bears E. and N.
steep hill

40.00

On top large boulder 10x10x8 ft. above ground
I cut a cross + at the exact cor. point for 1/4 sec. cor.
marked 1/4 on W side of cross; and raised a mound
of stone 2 1/2 ft. base 1 1/2 ft. high W of cor.; from which
an oak 7 ins diam. bears N. 88° 30' E. 135 lbs. dist.
marked 1/4 S 22 B.T.
An oak 6 ins diam bears S 85° 20' W 93 lbs dist.
marked 1/4 S 21 BT

42.70

Gulch - Superior and Globotract in bottom Course E.
Ascend

54.50

Ridge bears E. and N.

61.00

Descend

Chains

70.60 Small gulch Course E. with trail from Devils King to Globe in bottom

78.50 Ascend on spur bears E and W

80.00 Set granite stone 20x8x6 ins on bedrock in mound of stones for cor of sec's 15, 16, 21 and 22 marked with 3 notches on S and E edges.; and raise a mound of stone 2 ft. base 1/2 high W. of cor.; so pits impracticable.

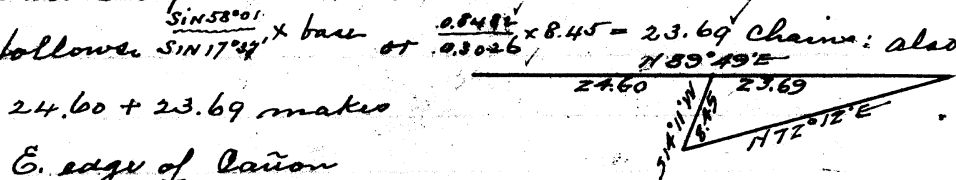
From which An Oak 4 ins diam bears N. 49° 30' E. 117 lks dist. marked T 1 S R 13 E S 15 BT

An Oak 4 ins diam. bears S 27° 45' E 12 lks dist. marked T 1 S R 13 E S 22 BT

An Oak 5 ins diam bears N. 58° W 114 lks dist marked T 1 S R 13 E S 16 BT

Land mountainous No other trees within limits
Soil rocky - 14th rate
Timber scattering Oak and Juniper
Mountainous land 80.00 Chains

24.60 N. 89° 49' E on a random line bet. sec's 15 and 22 W. edge of Devils Cañon which has precipitous walls at this point. To determine the dist. across I set a flag on line on E. side of Cañon, then measure a base line S 124° 11' W 8.45 chns to a point where the flag bears N. 72° 12' E. From the flag the S end of the base line bears S 72° 12' W by separate measurement, the angles are respectively 104° 22', 58° 01' and 17° 37' = 180° and compute the distance across the cañon as follows:



24.60 + 23.69 makes

48.29 E. edge of Cañon

79.94 Intersect N and S line 9 lks S of cor. of Secs 14, 15, 21 and 23 Phency Court

S 89° 45' W on a true line bet. sec's 15 and 22 over mountainous land

121.90 On N. side of gulch Course W

Descend rapidly over boulders and rough land

20.60 Deep gulch Course S. 30° W. branching Devils cañon Trail from Superior to Globe follows of this gulch Ascend steep slope over loose rocks

Chains
 31.65 On ridge bet. two cañons bears N.E. and S.W. (Wedge Devils Cañon)
 Descend steep rocky gulch Course W
 39.97 Falls on boulder 48x36x24 ins above ground.
 I set a cross + at the exact cor. point for 1/4 sec. cor.
 marked 1/4 on N. side of cross; and raised a
 mound of stones 2 ft base 1 1/2 ft. high N. of cor.
 Pits impracticable.
 Descend
 47.00 Devils Cañon Course S. 20° W.
~~Ascend~~
 55.24 N. edge Devils Cañon
 76.00 ~~Ascend~~
 79.94 The cor. of secs. 15, 16, 21 and 22
 Land mountainous and rough
 Soil rocky; 11th rate
 Timber scattering Oak and Juniper
 Mountainous land 79.94 chains
 May 23rd 1905

May 24th 1905: At 7th am. l.m.t. I set off 33° 20' on lat.
 arc. 20° 44' N. on decl. arc. and determine a true meridian
 with solar at cor. of secs 15, 16, 21 and 22

Thence I run
 N 0° 2' W bet secs 15 and 16
 Over mountainous land
 Ascend over boulders and broken land
 8.80 On ridge bears E. and W.
 Ascend over rough land
 31.60 On high spur bears E and W 400 ft. high
 Descend steep slopes
 40.00 Falls on rock in place 8x4x3 ft above ground
 I cut a cross at the exact cor. point for 1/4 sec. cor.

Chains
 42.00 marked $\frac{1}{2}$ on W side of cross; and raised a mound of stone 2 ft. base and $1\frac{1}{2}$ ft. high N. of cot. Pits impracticable.

53.30 Culch 200 ft deep Course E.
 Ascend high mountain

57.20 On hillside
 Top of mountain 500 ft. high base E and W.
 Descend

72.00 At fork Devil's Cañon 500 ft. deep Course E. ascend

80.00 Falls on rock in place $6 \times 4 \times 2$ ft. above ground
 I cut a cross at the exact ^{cor.} point for cor. of sec. 9, 10, 15 and 16 marked with 4 notches on S and 3 notches on E. sides of cross; and raised a mound of stone 2 ft. base $1\frac{1}{2}$ ft. high W. of cot. Pits impracticable
 From which

A Juniper 6 in. diam base N. $60^{\circ} 40' E$ 245 lks dist
 marked T 1 S R 13 E S 10 BT

A Juniper 8 in. diam base S $58^{\circ} 30' E$ 357 lks dist
 marked T 1 S R 13 E S 15 BT

Cot. is situated on S. slope of high hill base E. and W.
 Land Mountainous Cut by high ridges and gulches
 Soil rocky; 14^{th} rate
 Timber scattering Oak and Juniper
 Mountainous land 80.00 chains

40.00 N. $89^{\circ} 45' E$. on a random line bet. sec. 10 and 15
 Set temp $\frac{1}{4}$ sec. cot.

80.26 I intersect Grand River 21 lks N. of cot. of sec. 10, 11, 14 and 15
 Thence I run
 S. $89^{\circ} 54' W$. on a true line bet. sec. 10 and 15
 Over mountainous land
 Ascend

110.00 Top of ridge base N. E. and S. W.
 Descend long side hill

23.60 Culch Course S. W.
 Ascend over rocks and boulders

34.30 Ridge base N. E. and S. W. descends.

40.13 Falls on rock in place $4 \times 3 \times 2$ ft. above ground
 I cut a cross at the exact cot. point for $\frac{1}{4}$ sec. cot.
 marked $\frac{1}{4}$ on N. side of cross; and raised a mound of stone $3\frac{1}{2}$ ft. base $1\frac{1}{2}$ ft. high N. of cot.

Chains
 Pits impracticable.
 This cor. is located on steep hillside on E. side of gulch
 Course S. about 300 ft. N. of where the gulch joins Devil's cañon
 Descend steep slope
 44.00 Gulch Course S. N. fork of Devil's Cañon
 Ascend steep rocky slope
 51.50 W. edge of gulch ascend.
 56.00 On spur bears N. and S. 50 lbs S of Rock bluff
 Descend over rough broken land
 69.30 Head of small gulch Course S.
 Ascend along A. slope of high ridge bears N.E. and S.W.
 80.26 The cor. of secs. 9, 10, 15 and 16
 This mile is very rough cut up with deep cañons
 and high rocky ridges. Devil's cañon forms on this mile
 Land mountainous -
 Soil rocky 4th rate
 Timber sparse Oak and Juniper
 Mountainous land 80.26 Chains -
 May 24th 1905

The country North of this corner is very badly
 cut up with deep gulches and mountains almost
 inaccessible and impracticable to survey
 The line was therefore abandoned and I
 return to the cor. of secs 4, 5, 32 and 33.

33° 17' N

May 24th 1905: At 8:48 a.m. I set off ~~30° 15'~~ on the lat. arc; 21° 16' N on
 the dial arc and determine a true meridian with the solar and
 From the cor. of secs 4, 5, 32 and 33 on the S. bdy.
 of T₁ I run
 N. 0° 4' W. bet secs 32 and 33
 over rough, rocky mountainous land
 Ascend
 121.00 Top of low rocky spur bears E. and W.
 Descend over bedrock
 20.90 Gulch Course N.W.
 Ascend over large boulders
 29.80 Low ridge bears E. and W.
 Broken land large boulders
 32.60 Low ridge bears E. and W.
 40.00 Falls on large boulder 30x10x2 ft. above ground
 I cut a corner at the exact cor. point for 1/4 sec. cor.

17

Chains	marked $\frac{1}{4}$ on W side of cross; and raised a mound of stone $2\frac{1}{2}$ ft. base 2 ft. high nr. of cor. Pits impracticable - From which An Oak 4 ins diam bears S 70° W. 40 lks dist. marked $\frac{1}{4}$, S 32 BT no other trees within limits This cor. comes amongst large boulders on low rocky ridge bears E and W. Descend over bedrock
45.40	Gulch 1 chain wide Course W. Ascend
57.60	N. bank of gulch Over rough broken land with bedrock exposed
78.30	descend slightly
80.00	Set a granite stone 18x10x5 ins 10 ins in the ground to bedrock for cor. of secs 28, 29, 32, 33 marked with 1 notch on S and 4 notches on E. edges; from which An Oak 5 ins diam bears N. 46° 30' E. 62 lks dist marked T 1 S R 13 E S 28 B.T. An Oak 3 ins diam bears S 53° 30' E 77 lks dist marked T 1 S R 13 E S 33 B.T. An Oak 6 ins diam bears S 65° 45' W. 60 lks dist marked T 1 S R 13 E S 32 B.T. An Oak 6 ins diam bears N 7° 15' W. 33 lks dist. marked T 1 S R 13 E S 29 B.T. Cor. falls in head of small swale in grove of small oaks Land mountainous cut by many gulches Soil rocky, exposed bedrock, 4 th rate Timber sparse Oak and Juniper Mountainous land 80.00 chains
40.00	S 89° 55' E. on a random line bet. sec. 28 and 33 Set temp. $\frac{1}{4}$ sec. cor.
80.30	Intersect N and S lines 2 blocks N. of the cor. of sec. 27, 28, 33 and 34 Thence I run N. 89° 44' W. on a true line bet. sec. 28 and 33 Over broken land through dense growth of Pinellake Descend
0.75	Small wash Course S. Ascend
12.80	Bedrock enters grove of Pin oaks
19.00	Enter small opening part of Oak Flat

Chains 32.30	Leave opening ~ Descend
40.15 NR	Falls on rock in place 48x24x12 ins above ground I cut a cross at the west cor. point for 1/4 sec. cor. marked 1/4 on N. side of cross; and raise a mound of stone 2 ft. base 1 1/2 ft. high N. of cor. Pits impracticable Ascend
47.80	Enter grove of Pin Oaks
59.80	Rocky spur bears N. and S. Over broken land through grove of Pin Oaks
71.00	Low ridge bears N and S
79.00	Descend gently
81.00	The cor. of Secs. 28, 29, 32 and 33 Land Mountainous and rolling Soil rocky - 3 rd and 4 th rate Timber Small Pin Oaks Mountainous land, dense undergrowth 80.30 chains May 27 th 1905
May 27 th	At this cor. at 7 th A.M. L.M.T. 9 set off 21° 35' N on decl arc 35° 12' 44" on lat. arc and determined a true mer. with the solar 2' N. 0° 7' W. bet. sec's 28 and 29
37	Over mountainous land through oaks Descend small draw Course N.
46.50	Leave Oak grove. Enter N. edge of Oak Flat
8.60	Trail from Superior to Globe bears E and N.
13.40	Leave Oak Flat. Ascend
17.00	On N. slope of round butte covered with boulders, Descend
26.00	Gulch Course S. N. Ascend
35.20	Top of Rocky Butte. Descend
40.00	Set a granite stone 20x8x5 ins ¹⁵ ins in the ground for 1/4 sec. cor. marked 1/4 on N. face; and raise a mound of stone 2 1/2 ft. base 1 1/2 ft. high N. of cor. Pits impracticable Descend
43.00	Small draw Course N. ascend.
49.40	Top of rocky ridge bears E and N. Descend steep hillside into Queen's Creek
55.30	Queen's Creek Course S. 35° N. 150 lbs width. Ascend steep mountain
65.00	On break of hill Ascend steep mountain
80.00	Set a granite stone 22x16x5 ins on bedrock in mound of stones for cor. of sec's 30, 21, 28 and 29

chain marked with 2 notches on S and 4 notches on E, edges
and raise a mound of stone 2ft base 1 1/2ft high N. of cor.
Pits impracticable.
Cor falls on S. slope of ridge brass E and W. Near Top.
Land mountainous, broken and brushy
Soil rocky 4th rate
Timber sparse Pine Oaken
Mountainous land 80.00 Chains

S 89° 44' E on a random line bet. sec's 21 and 28
40.00 Set temp. 1/4 sec. cor.
80.12 Intersect N and S line 9 lks S of the cor. of sec's 21, 22, 27 and 28.
Thence Down
N 89° 48' W on a true line bet. sec's 21 and ~~27~~ 28
Over rough mountainous land
Ascend along S. slope of gulch
2.50 Rim of gulch
Descend gradually over broken land
17.80 Edge of sharp descent
29.90 Gulch crosses S.W.
Ascend gradually
35.40 Trail from Superior to Globe brass N. and S
37.20 Beginning of steep ascent
40.00 Falls on rock in place 7x3x1 ft. above ground
I cut a cross at the exact cor. point for 1/4 sec. cor.
marked 1/4 on N. side of cross; and raise a mound
of stone 2 1/2ft base 1 1/2ft. high N. of cor.
Pits impracticable.
Ascend steep hill
142.60 On rock bluff 20ft. high
43.80 Top of high ridge brass N. and S.
~~45.00~~ Descend into bend Queen Creek
~~50.70~~ E. rim of Queen Creek Cañon
~~60.00~~ Queen Creek 150 lks wide Course S.
Descend rapidly
71.80 West rim Queen Creek Cañon
Ascend
79.00 Top of mountain in bend of Queen Creek
80.12 The cor. of sec's 20, 21, 28 and 29
Land mountainous, soil 4th rate, No Timber
Mountainous land 80.12 Chains
204 297 1905

Chain

May 30 1915
T. 0° 42' W. bet. Secs. 20 and 21

Over rough mountain land
Ascend

1.20 Ridge bears E. and W.
over broken ground

12.40 In saddle bears E. and W.
Descend steep hillside

18.90 Rocky gulch Course E.
Ascend

25.50 On point of low sharp rocky ridge bears E. and W.
Descend over rock slide

32.00 Enter dense underbrush on right bank of Queen Creek descend.

40.00 Set granite stone 20x8x6 ins ¹⁵ in the ground for
1/4 sec. cot. marked 1/4 on W. face; and raise a mound
of stone 2 ft. base 1 1/2 ft high W. of cot. Pits impracticable

41.90 Queen Creek Course S. 15° E. 100 lks. wide

44.60 Ascend along W. slope of high ridge bears N. S. and S. W.

60.00 On hill side covered with loose boulders and rock slide

79.10 Old Silver King mine and Globe trail bears E. and W.

80.00 Falls on Rock in place 4x3x2 ft. above ground

I cut a cross + at the exact cor. point for cor of Secs 16,
17, 20 and 21 marked with 3 notches on S and 4
notches on E. sides of cross; and raise a mound
of stone 2 ft. base 1 1/2 ft. high W. of cot.
Pits impracticable.

Cot. falls on S. slope of steep hill covered with boulders,
Land rough and mountainous

Soil rocky; 4th rate

No Timber

Dense undergrowth and Mountainous land, 80.00 chains
at this cor. at 10²⁰ a.m. E.M.T. I set off 21° 45' N on dist. arc.
33° 20' N on lat. arc and determine a true Mer. with the bar

S. 89° 48' E. on a random line bet. Secs 16 and 21

40.00 Set temp 1/4 sec. cot.

80.06 Intersect Stand's line 36 lks. S. of the cor. of Secs 15, 16, 21 and 22
Thence I run

S. 89° 56' W. on a true line bet. Secs 16 and 21

Over mountainous land

44.50 Descend into Gulch Course S.

Ascend over broken land

22.80 Rocky ridge bears W. and S.

7

Chains	Descend over boulders, bedrock, bad land,
26.00	Gulch Course S.E. Boulders and exposed bedrock
40.03	Falls on rock in place 12x6x1 1/2 ft. above ground
41	I cut a cross + at the exact cor. point for 1/4 Sec. cor. marked 1/4 on N. side of cross; and raise a mound of stone 2 ft. base 1 1/2 ft. high N. of cor. Pits impracticable
47.00	Descend into Gulch Course S.E. Ascend over loose boulders and rock slides
73.50	Top of ridge bears N. and S. Descend steep rocky slope into Queen Creek Course S.
80.06	The cor. of secs 16 17 20 and 21 Land Mountainous Soil rocky: 4 th rate No Timber Mountainous Land
	80.06 chains May 30 th 1905
	May 31
	21 N. 0° W. bet secs 16 and 17 Over rough mountain land Ascend along N. slope of high ridge covered with boulders
2.10	On crest of rocks.
11.60	On spur of high ridge: From this point ruins of old pump station Silver King mine bears N. 75° 40' W.
12.40	Break of hill Descend rapidly into deep gulch
20.00	Gulch Course N. Ascend mountain about 700 ft. high
37.50	On steep hillside sloping east
40.00	Falls on rock in place 12x6x3 ft. above ground
41	I cut a cross + at exact cor. point for 1/4 sec. cor. marked 1/4 on N. side of cross; and raised a mound of stone 2 1/2 ft. base 2 ft. high on large boulder N. of cor.; placed there on account of steep slope of hill N. of cor. Pits impracticable - 1/4 cor. located on S.E. slope of high mountain near top. Ascend over large boulders
42.78	On E. slope of mountain near top Descend
46.80	Head of Gulch Course E. Ascend

Chains
71.20

Rocky ridge bears N.E. and S.W.
Descend rapidly

80.00

Falls on rock in place 3 x 2 x 3 above the ground
I set a cross + at the exact cor. point for sec's 8, 9, 16 and 17
marked with 14 grooves on S and E sides of cross,
and raised mound of stones 2 1/2 ft. base 1 1/2 ft. high
E. of cor.: placed there on account of steep slope of
hill. Pits impracticable.

Cor. located on E. side of steep little gutch course N
about 300 ft. S of point of convergence with a large
Gulch course E.

Land mountainous and very rough
Soil rocky: 14th rate
No timber

Mountainous land 8000 chains

At this cor at 10th A.M. L.M.T. I set off 21° 54' N ^{decl.} on ~~lot~~ ^{lot} and
39° 21' N on lot arc. and determine a true Mer. with the Solar.

²⁰⁰ N. 89° 56' E on a random line bet. sec's 9 and 16

40.00 Set temp 1/4 sec. cor.

80.06 Intersect standard line at cor of sec's 9, 10, 15 and 16
Thence I run

S. 89° 56' W. on a true line bet sec's 9 and 16
Ascend

21.20 Low rock ridge bears N. and S.

Ascend along S. slope of high mountain

20.40 Cross gulch course S.E. arm of Devils Cañon
Ascend steep hillside covered with rocks

34.70 On S.E. slope of high steep mountain
Ascend

37.60 Ridge bears N and S. South spur of high steep mountain
Descend

40.03 Set a trachite stone 20 x 12 x 4 ins. on bedrock in
mound of stone for 1/4 sec. cor. marked 1/4 ins N face
and raised mound of stone 2 1/2 ft. base 1 1/2 ft high
of cor. Pits impracticable.

Cor. situated on S.W. slope of high steep mountain
Ascend into saddle bears E and W

46.00 Swale bet 2 high mountains

Ascend rocky round top mountain

56.20 On N. slope of round top mountain
Descend long

Chains
72.40 Gulch Course N.E.
Ascend
78.00 Low ridge bears N.E. and S.W.
Descend
80.06 The cor. of sec. 8, 9, 16 and 17
Land mountainous and rough
Soil rocky 14th rate -
No Timber
Mountainous Land 80.06 chains
May 21st 1905

The country north of this corner is very badly broken and cut by mountain ridges and deep cañons almost inaccessible and impracticable to survey; I therefore abandon the line and return to the cor. of sec. 5, 6, 31 and 32 on S. bdy. of T₁.

33° 17' 7"

June 1st 1905: At 8^h 15^m a.m. lmt. I set off 2378' on the lat. arc; 22° 02' N on the decl. arc and determine the meridian with the solar and
From the cor. of sec. 5, 6, 31 and 32 on S. bdy. of T₁
I run

N. 0° 3' W. bet. sec. 31 and 32
Over rough mountainous land
Descend

1.80 Small draw Course E.
Ascend steep hill
12.00 Top of ridge bears E. and W.
Descend over large boulders and trap rock
23.80 Gulch Course N.E.
24.00 Cross high trail bet. Superior and Globe bears N.E. & S.W.
Ascend over bedrock and boulders
29.10 Top of rocky ridge, large boulders on end bears E. and W.
Descend over large granite boulders
38.80 Gulch Course E.
Ascend
40.00 Falls on rock, in place 24x16x6 in. above ground
I cut a cross at the exact cor. point for the cor. marked 1/4' on W. side of cross; and raised a mound of stone 2 ft. base 1/2 ft. high W. of cor. Pits impracticable
Ascend

830

Chains
 43.17 Large boulders. Low ridge bears N.E. and S.W.
 Descend
 45.90 Lower trail to Globe brass. E & W. In gulch Course E.
 Ascend
 50.20 Butte covered with boulders.
 62.75 On rocky knob boulders on end descend
 66.40 Falls on boulder 40 ft. high on S. rim of Queen Creek
 Cañon which at this point is 900 ft. deep with pro-
 cipitous walls; Point for cor. recs. 29, 30, 31 and 32
 falls in cañon. ^{Base line for triangulation impracticable;} I set flag on line N. of Cañon.
 I cut a cross + at the exact cor. point for W.C. to cor.
 recs. 29, 30, 31 and 32 marked W.C. 1 notch on S and
 5 notches on E. sides of cross; and raised a mound of
 stone 2 ft. base 1 1/2 ft. high N. of cor.; pits impracticable.
 Land Mountainous and very rough
 Soil rocky - 11th rate
 Timber scattering - Oak and Juniper
 Mountainous land 80.00 chains

The cor. for recs. 29, 30, 31 & 32 falling in Queen Creek
 Cañon I cannot run random line East
 therefore I run a true line bet. recs. 29 and 32
 N. 89° 55' W. from cor. of Recs. 28, 29, 32 and 33 bet
 recs 29 and 32
 Over rough mountain land
 Ascend

13.50 Rocky point

15.60 N. W. cor. Bellamy's stone corral bears N. 1° 30' W.
 3 big boulders 5 ft. W. of Bellamy's stone house
 bears N. 30° W. 25 chains dist. House invisible
 from any point on sec. lines.

Descend

17.20 Gulch Course N.

over boulders and loose rocks

28.40 Boulder 30 ft. high on E. edge of deep gulch

Descend

32.10 Trail from Superior to Globe bears N and S

33.00 Bottom of gulch Course N.

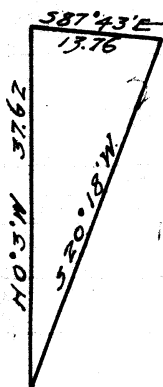
Ascend steep mountain

37.00 Enter dense growth and scrub trees

Chains 40.00 Falls on stone in place 10x5x1ft. above ground
 I cut a cross at the exact cor. point for $\frac{1}{4}$ sec. cor.
 marked $\frac{1}{4}$ on N. side of cross; and raise a mound
 of stone $2\frac{1}{2}$ ft. base 2 ft. high N. of cor. Pts. impracticable
 from which it. Pine trees in draw bears $S 82^{\circ} 45' E$ 34 lks dist
 no other trees within ^{marked $\frac{1}{4}$ S 32 BT} limits
 Ascend steep mountain through dense undergrowth
 Leave dense undergrowth
 Falls near edge of rock cliff on E. rim of Queen Creek
 Cañon. I cut a cross + at the exact point for wit-
 ness cor. to cor. of sec. 29 30 31 and 32, marked
 Pt. C^{on E.} with 1 groove on S and 5 grooves on E side of cross
 and raise a mound of stone $2\frac{1}{2}$ ft. base $1\frac{1}{2}$ ft. high
 N. of cor. Pts. impracticable
 Land mountainous very broken
 Soil rocky; 4th rate
 Timber sparse
 Mountainous land and dense undergrowth 80.00 Chis
 June 1st 1905

The line bet. sec. 30 and 31 lies in Queen
 Creek cañon and is impracticable to run
 Therefore I abandon the line and return to
 flag set on line bet. sec. 29 and 30

June 3.
 at this pt. at 7th A.M. Sun 4. I set a flag on the decl. arc.
 $30^{\circ} 18'$ lot are and determine ~~the distance~~ with solar
 On the line bet. sec. 29 and 30
 At the flag set on the N. side of Queen Creek cañon
 from sta. 66.40 chains on the standard line 21 and 32
 To determine this dist across the cañon I meas-
 ure a base line $S 87^{\circ} 46' E$ 100 chains distant
 from which a flag at sta. 66.40 chains N. end of the
 cañon bears $S 20^{\circ} 18' N$. From the flag at the N. end of
 the base bears $N. 20^{\circ} 18' E$. by measuring the angles
 are respectively $87^{\circ} 43'$, $71^{\circ} 56'$ and their sum
 is 180° . I compute the dist across the cañon as
 follows: - $\frac{\sin 71^{\circ} 56'}{\sin 20^{\circ} 21'} \times \text{base}$ or $\frac{23221 \times 100}{23477} = 9877$
 also the flag. $66.40 + 37.62 = 104.02$ chs. which is
 The flag set on N. side of cañon



Chains

- 24.02 ✓ Falls on bedrock. I cut a cross + at the exact cor point for W. P. for cor. of secs 29, 30, 31 and 32, marked W.P. on N. side of cross; and raise a mound of stone 2 ft base 1 1/2 ft. high N. of point. ~~Pts impracticable~~
Thence I run N. 0° 31' W. bet. secs 29, and 30
Over mountainous land
Ascend over boulders and broken land
- 35.70 Ridge bears E. and W.
- 40.00 Falls on rock in place 6 x 4 x 2 ft. above ground
I cut a cross + at the exact cor point for 1/4 sec. cor. marked 1/4 on W. side of cross; and raise a mound of stone 2 ft. base 1 1/2 ft. high W. of cor.
~~Pts impracticable.~~
Descend steep slope covered with boulders,
Gulch Course E.
- 47.50 Ascend long steep hillside
- 62.00 Top of high mountain bears N. 30° W and S 30° E
Descend along E. slope of mountain
- 80.00 ✓ Set a granite stone 22 x 12 x 6 ins. in mound of stone for cor. of secs. 19, 20, 29 and 30 marked with 2 notches on S. and 5 notches on E. sides; and raise mound of stone 2 ft. base 1 1/2 ft. high N. of cor.
~~Pts impracticable.~~
Land mountainous and very rough
Soil rocky; 16% rate.
No timber
Mountainous land 80 00 chains
June 3rd 1905

June 5th

- S. 89° 55' E. on a random line bet. secs. 20 and 29
- 40.00 ✓ Set temp. 1/4 sec. cor.
- 80.00 ✓ ~~Intersect~~ N. and line 24 lks S of cor. of secs. 20, 21, 28 and 29
Thence I run
S. 89° 55' W. on a true line bet. secs. 20 and 29
Over rough mountainous land
Ascend

Chains

7.00 Spur of mountain bears N.W. and S.E.
Ascend

27.30 Top of ridge bears N and S.

32.70 Edge of bluff 100 ft. high

36.00 Foot of bluff 100 ft. high
Descend

40.00 Falls on rocks in place 6 x 4 x 4 ft. above ground
MK I cut a cross at the exact cor. point for 1/4 ac. cor. marked
1/4 on N. side of cross; and raise a mound of stones
2 ft. base 1/2 ft. high on N. side of cor. Pits impracticable
Descend

47.20 Deep gulch Course S.
Ascend

55.70 Top of high ridge bears N. and S
Descend steep rocky hill

64.00 Deep rocky gulch Course S.
Ascend high steep mountain.

80.00 The cor. of sec. 19, 20, 29 and 30
Land mountainous and very rough
Soil rocky: 14th rate
No timber
Mountainous land 80.00 chains
at this cor. at 2nd P.M. E.M. & I set off 22° 33' N on decl. arc.
33° 20' N on lat arc. and determine a true Mer. with the Solar

32-19'

21.23 N. 89° 55' W. on a random line bet sec 19 and 30
Intersect N. ldy of the top 6 lks N. of the lot. of sec. 19, 24,
25 and 30 which is a stone in place marked and
witnessed as described by the ^{with the} surveyor general
Thence I run
N. 87° 55' E. on a true line bet sec 19 and 30
Over mountainous land
Descend

7.00 Gulch Course S.

18.00 Top of mountain bears N. 30° W and S. 30° E.
Descend

21.23 The cor. of sec. 19, 20, 29 and 30
Land Mountainous
Soil Rock; 14th rate
No timber
Mountainous land 21.23 chains

Chains

N. $0^{\circ} \frac{3}{4}$ W. bet. sec's 19 and 20

Over mountainous land

17.00 Descend along E. slope of high mountain Gulch Course S.E.

Ascend

24.00 Foot of S. slope of King's Crown 5500 ft. Elevation Ascend steep slope covered with loose rocks

40.00 Set a granite stone 20x16x10 ins firmly set in mound of stone for $\frac{1}{4}$ sec. cor. marked $\frac{1}{4}$ on N. face; and raise a mound of stone 2 $\frac{1}{2}$ ft. base 1 $\frac{1}{2}$ ft. high N. of cor. Pits impracticable.

68.00 Point on S.W. slope of King's Crown. Beyond this point the line ^{run} along inaccessible cliffs high up on N. side of King's Crown impracticable to chain or triangulate; therefore I abandon line and will set the cor. of sec's 17, 18, 19 and 20 from N. side of mountain

Land Mountainous

Soil; 4th class

No timber

Mountainous land

68.00 chns.

June 5th 1905

June 8th

At this cor. at 7^h 15^m A.M. I set off $22^{\circ} 50'$ on decl. and $33^{\circ} 20'$ N. on lat. arc. and determined a true Meridian with the

On line bet. sec's 17 and 20

The cor. of sec's 17, 18, 19 and 20 not having been located I run from the cor. of sec's 16, 17, 20 and 21 $S 89^{\circ} 55'$ W. on a true line bet. sec's 17 and 20

Over mountainous land

Descend

7.00 Trail from Silver King mine to Glade bears N.W. and S.E.

Descend rapidly

12.50 Queen Creek Course $S 20^{\circ} E$ 100 lbs wide ascend

32.00 Rocky Knoll

Descend

38.00 Deep draw Course N.E.

40.00 Set a trachite stone 22x10x6 ins in a mound of stone for $\frac{1}{4}$ sec. cor. marked $\frac{1}{4}$ on N. face; and raise a mound of stone 2 ft. base 1 $\frac{1}{2}$ ft. high N. of cor. Pits impracticable

Chains Ascend over very rough land
 64.00 High rocky, rough, spurs of King's Crown
 76.40 On large rocks
 Descend
 78.70 Top of bluff 40 ft. high
 80.00 Falls on rock in place 8 x 6 x 4 ft. above ground.
 Cut a cross + at the exact cor point for Cor. of secs. 17, 18, 19 and 20
 marked with 3 grooves on S and 5 grooves on E. side of cross;
 and raise a mound of stone 2 ft. base 1 1/2 ft. high N. of cor.
 on account of steep hillside. Pits impracticable
 Land mountainous
 Soil, 11th rate
 No timber
 Mountainous land 80.00 Chains

20.99 S. 89° 55' W. on a random line bet. secs. 18 and 19
 Intersect N. bdy. of the ^{1/4} S. of the cor. of secs 13, 18, 19 and 24
 Thence down
 East on a true line bet. secs 18 and 19
 Over mountainous land
 Ascend rapidly vertical angle 39° 40'
 5.77 Trail Superior to Globe (Stone man's grade) N. and E.
 20.99 The cor of secs. 17, 18, 19 and 20
 Land mountainous
 Soil; 14th rate
 No timber
 Mountainous land 20.99 chains
 June 8th 1905

June 9th
 N. 0° 5' W. bet. secs 17 and 18
 Over rough mountain land
 Descend steep mountain through dense undergrowth
 15.30 On rocky knob
 Descend
 32.00 Trail from Silver King to Globe bears E. and W.
 Ascend
 40.00 Set limestone 18 x 8 x 6 ins in mound of stone for 1/4 sec.
 Cor. marked 1/4 on W. face; and raise a mound of
 stone 2 1/2 ft. base 1 1/2 ft. high W. of cor.

Chains	Pite impracticable. from which Silver King pump station bears S. 65° E. Top of King's Crown Mountain bears S 20° 20' E Ascend
41.60	On spur bears E. and W. Leave dense undergrowth Descend gradually
50.00	Enter dense undergrowth
52.10	Queen Creek Course S. 20° E. 100/ks wide
53.30	Leave dense undergrowth, ascend
65.00	Rocky draw Course W.
80.00	Set a limestone 20x10x4 ins in mound of stone for cor. of secs. 7, 8, 17 and 18 marked with 4 notches on S and 5 notches on E. edge; and raise a mound of stone 2 1/2 base 1 1/2 ft. high N. of cor. Pite impracticable Land Mountains Soil rocky; 4 th date Timber sparse. Mountains land and dense undergrowth 80.00 Chains.
	At this cor. at 2 ⁴³ P.M. l.m.t I set off 22° 56' N on dist are 33° 21' N on lot are and determined a true Mer. with Solar It. 89° 55' E on a random line bet. secs. 8 and 17
40.00	Set temp. 1/4 sec. cor.
80.26	Intersect It and S line 16 lks It. of cor of secs 8, 9, 16 and 17 Thence I run It. 89° 58' W. on a true line bet. secs. 8 and 17 Over high mountain and rough land Descend
44.00	Gulch Course It. Ascend steep mountain
20.30	Top of high mountain bears It. and S. Descend over rough broken ground
34.00	Gulch Course S. W. Ascend
40.13	Falls on Quartzite ledge 75 ft. wide bears It. and S. I cut a cross+ at the exact cor. point for 1/4 sec. cor. marked 1/4 on N side of cross; and raise a mound of stone 2 ft. base 1 1/2 ft. high N. of cor.; Pite impracticable.
41.00	Bluff 30 ft. high Descend rapidly
60.40	Gulch Course S. W.

Chains Ascend
 65.60 Ridge bears N. and S.
 Descend rapidly
 73.00 Deep Gulch Course S.
 Ascend
 80.26 The cor. of secs. 7, 8, 17 and 18
 Land Mountainous
 Soil rocky; 4th rate
 No timber
 Mountainous land
 80.26 Chains
 June 9th 1905

June 10. At this Cor. at 8³⁰ A.M. L.M.S. I set of 23° 50' N on decl arc.
 33° 21' N on lat arc and determined a true Mer. with the Solar.
 West on a random line bet. Secs. 7 and 18
 21.30 Intersect N. Sdy. of the Twp. at cor. of Secs. 7, 12, 13 and 18
 Thence I run
 East on a true line between secs. 7 and 18
 Over mountainous land
 Descend
 0.60 Queen Creek Course S 20° E 100 yds wide ascend
 3.50 Low ridge bet. the forks of Queen Creek descend
 7.20 East Fork Queen Creek Course S.
 Ascend
 12.60 N. slopes flat top mountain
 17.00 Top of flat top mountain
 Descend
 21.30 The cor. of secs. 7, 8, 17 and 18
 Land mountainous
 Soil: 4th rate
 No timber
 Mountainous land
 21.30 Chains
 June 10th 1905

The land north of this corner is badly broken and cut by mountain ridges and deep cañons almost inaccessible and impracticable to survey.
 I therefore end the survey at this corner
 this 10th day of June A.D. 1905

Chains

I begin at the Standard Cor. of Tps. 1 N. R. 12 and 13 E. which is a rock in place marked and witnessed as described by the surveyor-general.

May 2nd 1905 at 7th a.m. local. I set off ~~89° 22' 44"~~ ^{33° 23' 77"} on lat. arc; 15° 18' N. on decl. arc and determine a true meridian with the solar.

Thence I run

East on S. by of sec. 31

Over rough mountainous land

Descend rapidly

23.50 Gulch Course S.

Ascend

27.50 Low ridge bears N. and S. Descend

31.00 Enter dense undergrowth

32.20 Bottom of Haunted Cañon 4 chains wide Course N. 80° E.

34.00 Ascend through dense underbrush

38.42 Falls 8 links N. of 1/4 sec. cor. which is a granite stone 10x10x8 ins. above ground firmly set and marked S.C.

1/4 on N. with a mound of stone 2 ft. base 1 1/2 ft. high N. of cor. No pits. Cor. is located on N. slope of steep hillside. The true bearing to the cor. is S 89° 53' E

38.42 chns dist. From which I run

East. through dense underbrush

43.20 Ridge bears N and S

Along S. side Haunted cañon on steep hillside

55.00 Descend over broken land

71.00 Gulch with trail from Silver King mine Course N.

72.00 Leaves underbrush. Ascend

76.62 Falls 14 lks. N. of cor. of sec. 31 and 32 which is a limestone stone 12x5x7 ins above ground firmly set marked S.C.

on N. with a groove on W. and 5 grooves on E. face; with a mound of stone 2 ft. base 1 1/2 ft. high N. of cor.; no pits

The true bearing to cor. is S 89° 48' E 38.20 chns. dist.

Land mountainous

Soil rocky; 4th rate

No timber

Mountainous land and dense undergrowth 76.62 chains

Rain P.M.

May 2nd 1905

Chains
 From the ^{Stand} cor. of sec 31 and 32.
 I run
 East on S. bay. of Sec. 32
 Over mountainous land, ascend
 21.06 Top of high mountain bars N. and S.
 Ascend steep slope over broken land
 34.40 Enter dense undergrowth
 38.31 Falls 40 links N. of 1/4 sec. cor. which is a red granite
 stone 12x4x6 ins above ground firmly set, marked
 1/4 S.C. on N.; with mound of stone 2 ft base 1 1/2 ft high
 N. of cor., No pits - or bearing trees. Cor. is located in
 a thicket of young Cypress trees and manzanita about
 150 lks. S.W. of where 2 small gulches come together.
 The true course to cor. is $88^{\circ}24'E$ 38.31 chains dist.
 from which ^{cor.} I run
 East
 Descend
 40.10 Small gulch course N. $20^{\circ}E$.
 42.00 Leave dense undergrowth ascend rapidly over deep gulches.
 46.20 Ridge bars N. and S.
 Ascend
 52.00 Gulch course N.E.
 Ascend
 72.20 High mountain bars. N. and S.
 Descend
 74.72 Falls 25 lks S of cor. of sec 32 and 33 which is a stone
^{38.31}
^{36.41} in place 4x3x2 ft. above ground dimly marked with a cross
 S.C. on N. 2 grooves on N. and 4 grooves on E side of cross;
 and a mound of stone 2 ft base 1 1/2 ft. high N. of cor., No pits
 This cor. is located on N. side of a steep little gulch, course
 N., in a thicket of brush.
 $77^{\circ}36'E$
 The true course to cor. is $87^{\circ}39'E$ 36.41 chains dist.
 Land mountainous and very broken
 Soil rocky; $4\frac{1}{2}$ rate
 Timber scattering in bottom of gulches
 Mountainous land and dense undergrowth 74.72 chains

May 4
 At this Cor. at 2 P.M. l.m.t. I set off $15^{\circ}38'$ on decl arc
 $33^{\circ}23'$ on lat. arc. and determined a true Meridian
 with the solar.

Retracement of the G. and S. R. Base Line
T. 1 S. 7. R. 13 E.

73
49

BOOK 1851

chains ^{Stand.}
From the cor. of Secs 32 and 33
I run
East on S. bdy of Sec. 33
Over mountainous land
Descend
3.50 Bottom of gulch Course N.
Ascend
11.00 Low ridge bears N. and S.
Descend
16.34 Gulch Course N.
Ascend
23.00 Ridge bears N. and S.
Descend
27.00 Cañon Course N.
Ascend
31.80 Top of ridge bears N. and S.
Descend
37.99 Falls 12 lbs S. of 8th sec. cor. which is a granite stone
8 x 6 x 6 ins above ground firmly set and marked with
S.C. 1/4 on N. face; with mound of stone 2 ft. base
1 1/2 ft. high N. of cor. No pits or bearing trees.
The true Corner: 1st Sec. cor. is N. 89° 50' E 37.99 chms dist.
From which I run
East descending
49.00 Gulch Course N. E.
Ascend
61.10 Top of high ridge bears N. 30° E. and S. 20° W.
Descend
76.03 Falls 15 lbs S of cor. of sec. 33 and 34 which is a granite
stone firmly set 8 x 5 x 8 ins above ground marked S.C. on N.
39.99
38.04 3 goovers on E. and W. faces; and mound of stone
2 ft. base 1 1/2 ft. high N. of cor. No pits or bearing trees.
Cor is located on E. slope of high ridge bears N and S
The true Course to cor. is N. 89° 47' E. 38.04 chms dist
Land mountainous
Soil rocky; 4th rate
No timber
Mountainous land and dense undergrowth 76.03 chains

May 2nd 1905

Retracement of the G. and S. R. Base Line
T. 1 N., R. 13 E

Chains May 5th 1905 at 7^h 30^m a.m. l.m.t. I set off 33° 28' on
lat. arc; 16° 11' N. on decl arc. and determine a true
meridian with the solar.

Thence from the corner of Secs 33 and 34 I run
East on S. bay of arc. 34
Over mountainous land
Descend
11.00 Deep gulch Course N.
Ascend
18.00 Top of high ridge bears N. E. and S. W.
Over broken land
34.30 Descend steep slopes
38.50 Falls 25 lks N. of cor. of sec's 34 and 35 which is a granite
stone 12 x 6 x 6 ins above ground firmly set and plainly
marked with 4 grooves on N. and 2 grooves on E. face;
and a mound of stone 2 ft. base 1 1/2 ft. high N. of cor. No pits
are bearing trees. The cor. is located on N. edge of Syc-
amore Cañon on rocky point.

I find the S. line of Sec. 34 is 41.50^{chains} short and the
1/4 Sec. cor. not having been found I return to the cor. of
Secs 33 and 34 and carefully re-measure the distance
The difference in measurements is 0.10 lks; By
first measurement 38.45 chns. by second measurement
38.55 chns. the mean of which is 38.50 chns.
The true course to cor. is ~~S 89° 38' E~~ ^{S 89° 38' E} 38.50 chains dist.

Land mountainous
Soil rocky; 4th rate
Timber sparse brush in Cañons
Mountainous land 38.50 chains

chain Stand
From cor. of sec 35 and 36 I run
East on S. bay. of sec. 36
Over mountainous land
11.00 Foot of hill
Ascend
18.00 Top of hill bears N.E. and S.W.
23.00 Descend
28.30 Gulch course S. W.
Ascend
36.00 Point of ridge bears N. and S.
39.64 Falls 50 lks N. of 1/4 sec. cor. which is a granite stone
9x4x6 ins above ground firmly set and marked S.C.
1/4 on N. face; with mound of stone 2 ft. base 1 1/2 ft. high
N. of cor. No pits.
The true course to cor. is $88^{\circ} 17' E$
 ~~$89^{\circ} 53' E$~~ 39.64 chains dist.
from which ^{cor} I run
East
46.80 Descend
53.30 Gulch course N.
Ascend
66.20 Ridge bears N. and S.
Descend rocky slope covered with dense undergrowth
79.20 Falls 8 lks S of the S.E. cor of T.P. which is a quartz stone
~~39.64~~
39.56 12x5x8 ins above ground firmly set. marked S.C. on N.
13 E on W. 14 E on E. and 6 grooves on N. E. and W. faces;
with mound of stone 2 ft. base 1 1/2 ft. high N. of cor. No pits.
Cor. is located on N. slope of hill in dense undergrowth
about 8 chains S and N. of Pinto Creek.
The true course to cor. is N. $89^{\circ} 53' E$ - 39.56 chns. dist.
Land mountainous
Soil rocky; 14th rate
Timber sparse Oak and Juniper
Mountainous land, dense undergrowth 79.20 chns. dist.
May 6th 1905

This page reversed
see other side

Retracement of the G. and S. R. Base Line
T. 1 S., R. 13 E.

BOOK 1851

chains

From the ^{Stand} cor. of Secs 34 and 35 Run
East on S. bdy of sec 35
Over mountainous land
Descend into Dycamore Cañon Course
13.00 Bottom of Cañon Course N. (water) 20 lks wide
Ascend
24.50 East edge of Cañon
Over rough land broken with rocky ridges and gulches
32.70 Large rock on top of high ridge bears N.E. and S.W.
37.40 Descent beginning of steep descent, dense undergrowth
38.87 Falls 17^{lks} N. of 1/4 sec. cor. which is a stone 24x24x15 ins
above ground marked with a cross + and S.C. 1/4 on N.
side of cross with a mound of stone 2 ft. base 1 1/2 ft. high
N. of cor. No pits
The true course to cor. is S 89° 45' E 38.87 chains dist.
from which ^{Cor} Run
East
Descend
73.00 Power's gulch Course N.
77.43 Falls 49 lks S. of cor of sec's 35 and 36 which is a
38.87
38.56 granite stone 10x7x5 ins above ground marked S.C.
on N. and 5 grooves on N. and 1 groove on E. face;
with mound of stone 2 ft. base 1 1/2 ft. high N. of cor.;
No pits; Cor. located on brushy flat in Power's gulch
The true course to cor. is ~~N 89° 18' E~~ ^{N 89° 16' E} 38.56 chns. dist.
Land Mountainous
Soil rocky; 4th rate
Timber scattering Oak and Juniper, Pycamore
Mountainous land 77.43 chains
May 5th 1905

May 6th
At this cor. at 8^h a.m. l.m.t. I set off 16° 28' on
dist. arc 33° 23' Non lat. arc and determine a
true meridian with the solar.

This Township is very rough and mountainous in all parts and of little value for agriculture, grazing or mining. Water is scarce and the soil light in all except section 13. The township is cut through the middle by Devil's Cañon from 300 to 500 ft. deep, with many branches coming in from each side.

The only living stream is Queen Creek which heads in sections 7 and 8 and traverses Secs. 17, 20, 21, 28 and 29 leaving the township at the corner of sections 30 and 31; its entire course passing through deep rugged cañons its waters are not available for irrigation in the township.

The timber is sparse and of little value. The timber over a considerable area having been cut for use at Silver King mine is replaced by a second growth. The timber is Oak, Juniper and Cypress.

There is some valuable mineral in the north of the township along the Base line, undeveloped, but the balance of the township is of volcanic origin with no indication of mineral deposits.

The only land in the township good for pasture or agriculture is in sections 13, 14 and Oak Flat in section 28.

The improvements in the township is the Pinal Ranch owned by Iovno and Craig on sections 13 consisting of about 320 acres fenced with 60 acres in orchard, garden and farm land irrigated by water pumped from a well; and a good adobe house and out buildings.

There is also a stone house and corral on section 29 claimed by Mr. Bellamy a cattleman and the ruins of the old Silver King pump station in section 17.

Alexander B. Titus
Compassman

LIST OF NAMES.

A list of the names of the individuals employed by Alexander B. Titus
Compassman, United States Deputy Surveyor, to assist in running, measuring, and
marking the lines and corners described in the foregoing field notes of the survey of the Exterior
and Subdivisions of T. 1 S. R. 13 E. G. and S. R. Meridian
showing the respective capacities in which they acted:

Orlando E. Sowers, Chainman.

Daniel Hayes, Chainman.

Robert Jones, Moundman.

Geo. Huber, Moundman.

Ross Daley, Axman.

Thomas Judge, Axman.

Frank Wash, Flagman.

FINAL OATH OF ASSISTANTS.

We hereby certify that we assisted Alexander B. Titus
Compassman, United States Deputy Surveyor, in surveying all

those parts or portions of the Exterior and Subdivisions lines of
T. 1 S. R. 13 E. G. and S. R. Meridian

of the _____
meridian, Territory of Arizona, which are represented
in the foregoing field notes as having been surveyed by him and under his direction; and that said survey
has been in all respects, to the best of our knowledge and belief, well and faithfully surveyed, and the
corner monuments established, according to the instructions furnished by the United States Surveyor
General for Arizona

The above Oath was subscribed to and sworn
by Thomas Judge. before me this 11th day
July 1905

53A

R. H. Green
Notary Public

Commission exp. June 28-1906.

FINAL OATH OF UNITED STATES DEPUTY SURVEYOR.

I, Alexander B Titus Compassman for F. B Jacobs, United States Deputy Surveyor, do solemnly swear that, in pursuance of a contract received from George Christ, United States Surveyor General for the territory of Arizona, bearing date of the 23rd day of May 1901, I have well, faithfully, and truly, in my own proper person, and in strict conformity with the instructions furnished by the United States Surveyor General for Arizona, the Manual of Surveying Instructions, and the laws of the United States, surveyed all those parts or portions of the subdivisional lines of T. 1. S. R. 13 E.

of the Gila and Salt River Base 1/2 meridian, in the territory of Arizona, which are represented in the foregoing field notes as having been surveyed by me, and under my direction; and I do further solemnly swear that all the corners of said survey have been established and perpetuated in strict accordance with the Manual of Surveying Instructions, and the special written instructions of the United States Surveyor General for Arizona and in the specific manner described in the field notes, and that the foregoing are the original field notes of such survey; and should any fraud be detected, I will suffer the penalty of perjury under the provisions of an Act of Congress approved August 8, 1846.

Alexander B. Titus
United States Deputy Surveyor.

Subscribed by said Alexander B Titus, and sworn to before me }
this 25th day of October 1905, 189

Frank A Ingalls
U. S. Surveyor General



APPROVAL.

OFFICE OF THE UNITED STATES SURVEYOR GENERAL,

Phoenix A.T., March 12th 1906, 189

The foregoing field notes of the survey of the subdivisional lines of T. 1. S. R. 13 E., and retracement of the Gila and Salt River Base Line through Range 13 East, of the Gila and Salt River Base and Meridian, in the territory of Arizona

executed by Alexander B. Titus, Compassman under contract No. 81, dated March 23rd 1901, 189, having been critically examined, and the necessary corrections and explanations made, the said field notes, and the surveys they describe, are hereby approved.

Frank A Ingalls
United States Surveyor General.

I certify that the foregoing transcript of the field notes of the above described surveys in, has been correctly copied from the original notes on file in this office.

United States Surveyor General.