

1898

56  
5061 9' 00V  
AUG. 16. 1905

1905

BOOK 1898

# FIELD NOTES

OF THE SURVEY OF THE

Fractional West Boundary and  
Subdivisional Lines

- 17 -

T11S R16E

Necessary to Embrace

- the -

Agricultural Claims

- of -

WILLIAM KELLOGG & FRANK WEBBER

- by -

LEGAL SUBDIVISIONS

Of the Gila and Salt River Base and Meridian,

ARIZONA

AS SURVEYED BY

William B. Alexander, United States Deputy Surveyor,

Under his Contract No. 131., dated May, 4<sup>th</sup>, 189<sup>1905</sup>

Survey commenced July, 15, 189<sup>1905</sup>

Survey completed July, 31, 189<sup>1905</sup>

1898

1

1

57  
1A

R. B. Codwalader Chainman

J. E. Mertaugh

Frederick W. Wengenroth Moundman

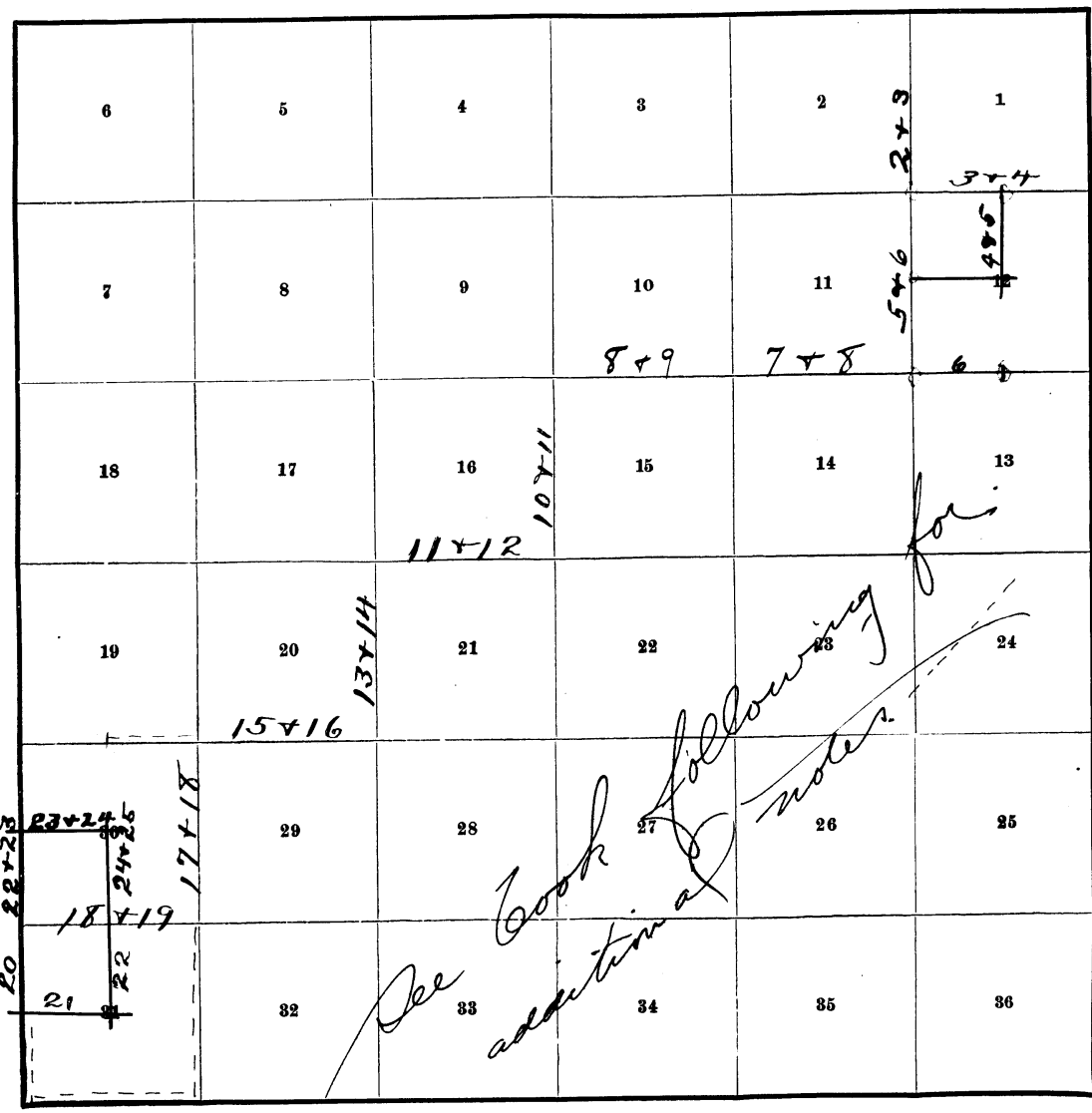
Albert Tully Axman

Homer Batte Flagman

BOOK 1898

INDEX DIAGRAM.

Township 11 S, Range 16 E



Meanders Page.....

PRELIMINARY OATHS OF ASSISTANTS.

WE, R. B. Ladman and J. E. Murtough  
do solemnly swear that we will well and faithfully execute the duties of chainmen; that we will level the chain over even and uneven ground, and plumb the tally pins, either by sticking or dropping the same; that we will report the true distances to all notable objects, and the true lengths of all lines that we assist in measuring, to the best of our skill and ability, and in accordance with instructions given us, in the survey of

Subdivisional lines in T11S R16E  
*and fractional west boundary*

R. B. Ladman Chainman.  
J. E. Murtough Chainman.

Subscribed and sworn to before me this 1st  
day of July, 1895  
My Commission Expires Sept. 24, 1906.



Ralph W Saugworth  
Notary Public

WE, Frederick W Wengert and  
do solemnly swear that we will well and truly perform the duties of moundman in the establishment of corners, according to the instructions given us, to the best of our skill and ability, in the survey of

Subdivisional lines in T11S R16E  
*and fractional west boundary*

Frederick W Wengert Moundman.  
Moundman.

Subscribed and sworn to before me this 1st  
day of July, 1895  
My Commission Expires Sept. 24, 1906.



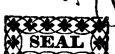
Ralph W Saugworth  
Notary Public

WE, Albert Tully and  
do solemnly swear that we will well and truly perform the duties of axman in the establishment of corners and other duties, according to instructions given us, to the best of our skill and ability, in the survey of

Subdivisional lines in T11S R16E  
*and fractional west boundary*

Albert Tully Axman.  
Axman.

Subscribed and sworn to before me this 1st  
day of July, 1895  
My Commission Expires Sept. 24, 1906.



Ralph W Saugworth  
Notary Public

I, Homer Batte, do solemnly swear that I will well and truly perform the duties of flagman according to instructions given me, to the best of my skill and ability, in the survey of

Subdivisional lines in T11S R16E  
*and fractional west boundary*

Homer Batte Flagman.

Subscribed and sworn to before me this 1st  
day of July, 1895  
My Commission Expires Sept. 24, 1906.



Ralph W Saugworth  
Notary Public

CHAINS.

Survey commenced July 15, 1905, and executed with a Young & Sons light mountain transit No. 7520; the horizontal limb having two double verniers placed opposite each other and reading to single minutes of arc, which is also the least reading of the declination and latitude arcs.

At the Standard corner of Secs. 35 and 36 T. 10 S. R. 16 E. Gila and Salt River Base Mer. previously established by me in Lat.  $32^{\circ} 32' 30''$  <sup>North</sup> ~~South~~, Long.  $110^{\circ} 40'$  West, at 4 h. 30 m. p.m. l.m.t. I set off  $32^{\circ} 32' 1/2''$  on Lat. arc.  $21^{\circ} 32''$  on the decl. arc, and determine a meridian with the solar and mark a point thereof by tack driven in a stake set firmly in the ground about 5 ch. N. of my station.

At said Cor. at 11 h. 55 m. p.m. l.m.t., I observe Polaris at eastern elongation, in accordance with instructions given in the Manual, and mark a line thus determined by a tack driven in a wooden stake set firmly in the ground about 5 ch. N. of my instrument.

July 15th, 1905.

July 16th, 1905; At 6 h. 00 m. l.m.t., I lay off the azimuth of Polaris  $1^{\circ} 25''$  to the West, and marked the true meridian thus determined by a tack in a stake already set in the ground 5 ch. N. of my instrument. This mark falls 0.04 ft. west of the mark determined by the solar observation.

*on this mile see Book of corrections*

At 7 h. 30 <sup>a.m.</sup> m. l.m.t. I set off  $21^{\circ} 26' 1/2''$  on the decl. arc,  $32^{\circ} 32' 1/2''$  on the lat. arc, determine a meridian with the solar, and mark a point thereof on the stake already set 5 ch. N. of my station. This mark falls 0.05 ft. west of the mark determined by observation on Polaris.

## CHAINS.

The solar apparatus by a.m. and p.m. observation defines positions for two meridians about 24' E. and 30' W. of the meridian established by Polaris observation, therefor I conclude that the adjustments of the instrument are satisfactory.

The magnetic bearing of the true meridian is N. 13° 15' W. I commence at the STANDARD CORNER for Sects. 35 and 36 T.10 S., R.16 E. *as described*

Thence I run west on the STANDARD line,

13.50 Descend into canon.

24.50 Wash, 50 lks. wide, bears E. N.E. ascend.

34.05 Set a quartzite stone 7 x 8 x 16 ins. 11 ins. in the ground for closing corner of Secs. 1 and 2 marked C. C. on S; with 1 groove on E. and 5 grooves on W. faces, and raise a mound of stones 2 ft. base 1 1/2 ft. high S. of Cor. Pits impracticable.

Thence I run S. 0° 1' E. on a true line bet. Secs. 1 and 2. Descend

7.00 Canon wash 50 lks. wide, bears E. N.E. about 250 ft. deep. Ascend

18.00 Top. Thence over rolling land.

30.70 Road, bears S.W.

31.00 Descend over roughly rolling ground .

35.00 Bottom gulch, bears S.E. Ascend.

38.00 Ridge bears S.E.

40.00 Set a granite stone 6 x 12 x 15 ins. 10 ins. in the ground for 1/4 cor. bet. Secs. 1 and 2 marked 1/4 on W. face, and raise a mound of stones 2 ft. base 1 1/2 ft. high W. of cor. Pits impracticable.

43.00 Gulch, bears E. Ascend.

I set off 21° 24' on the declination arc: at 12.00 m. l.m.t. and observe the sun on the meridian; the resulting lat. is 32° 32' N

## CHAINS.

49.00 Thence over rolling ground

69.00 Road, bears S.E.

75.00 Ridge bears S.E. Descend.

80.00 Set a quartz stone 6 x 8 x 14 ins. 10 ins. in the ground for cor. of secs. 1, 2, 11 and 12 marked with 1 notch on E. and 5 notches on S. edges; and raise a mound of stones 2 ft. base 1 1/2 ft. high W. of cor.

Land mountainous, soil 3rd rate

Good grazing, mountainous land 80.00 chs. ✓

Undergrowth scattered oak and mesquite brush.

From this cor. the Kellogg Ranch house bears S. 24° E.

July 16th, 1905.

July 17th, 1905.

At 7 h. 30 m. <sup>am</sup> I set off N. 21° 16 1/2 ' on the decl. arc and 32° 31 1/2 ' N on the lat. arc and determine a meridian with the solar at the cor. to Secs. 1, 2, 11 and 12.

Thence I run E. on true line bet. Secs. ~~1~~ and 12. Ascend

6.00 Road, bears N. N.W. Ground roughly rolling. Descend.

13.00 Gulch, bears S.E. Ascend

27.00 Ridge, bears S.E.

30.50 Bottom of gulch, bears S.E. by E. Ascend along N. bank of gulch.

40.00 Set a quartzite stone 5 x 7 x 18 ins. 13 ins. in the ground for a 1/4 sec. cor. bet. secs. 1 and 12, marked 1/4 on N. face; and raise a mound of stones 2 ft. base 1 1/2 ft. high N. of cor. Pits impracticable.

## CHAINS.

July 17th, 1905. I set off N.  $21^{\circ} 14'$  on the decl. arc and at 12.00 m. <sup>lun</sup> observe the sun on the meridian the resulting lat. is  $32^{\circ} 31' N.$

48.06 Spur and trail, bears S.E. Descend.  
 52.00 Gulch, bears S.E. Ascend.  
 66.35 Gulch, bears S.E. by S. *Ascend*  
 80.00 Set a quartzite stone 5 x 12 x 18 ins. 13 ins. in the ground for cor. of Secs. 1 and 12, marked with 1 notch on the N. and 5 notches on the S. edges; and raise a mound of stones 2 ft. base 1 1/2 ft. high, W. of cor. Pits impracticable.

Land roughly rolling, soil 3rd rate.

Underbrush, scattered cacti. No timber.

Mountainous land 80.00 chs.

S. of this cor. land is extremely rough hence impracticable to survey.

July 17th, 1905.

July 18th, 1905.

At 7. 30 a.m. l.m.t. I set off  $32^{\circ} 31' 1/2'' N.$  from the lat. arc;  $21^{\circ} 6'' N.$  on the decl. arc. and determine a meridian with the solar at 1/4 cor. bet. secs. 1 and 12.

Thence I run S. over descending ground.

4.00 Gulch, bears S.E. by E. Ascend.  
 8.50 Ridge, bears S.E. Descend.  
 15.34 Canon, bears S.E. Ascend.  
 24.64 Spur, bears S.W. Descend.  
 28.85 Wash, bears S.W.  
 34.00 N. bank Kellogg wash, bears S.E. 2 chs. wide.  
 36.00 S. bank Kellogg wash. Ascend abruptly.  
 40.00 Set a granite stone 5 x 12 x 18 ins. 13 ins. in the ground for center of Sec. 12, marked Center Sec. 12



CHAINS	<p>on W. face on S. bank of Kellogg Wash. Set mound of stones about the corner to render same permanent.</p>
	<p>Land roughly rolling, soil 3rd rate.</p>
	<p>Underbrush scattered mesquite and cacti. No timber.</p>
	<p>Land S. of this cor. broken by cañons and is impracticable to Survey.</p>
	<p>-----                  At cor. to Secs. 1, 2, 11 and 12, I set off <sup>24° 4' N</sup> <del>21° 3' N</del> on the decl. arc and observe the sun at 12 h. 0 m. l.m.t. on the meridian the resulting lat. is 32° 31 1/2' <sup>N</sup></p>
	<p>Thence I run S. 0° 1' E. on a true line bet. Secs. 11 and 12. Descend over roughly rolling ground.</p>
6.55	<p>Road, bears S.E.</p>
18.70	<p>Road, bears S.E. by S.</p>
19.10	<p>Wash, bears S.E. 10 ft. wide.</p>
22.00	<p>William Kellogg's Ranch House bears S. 49° 30' E.</p>
24.50	<p>Wash, bears S.E. sides are very steep width 30 lks.</p>
26.40	<p>Road, bears S.E.</p>
30.00	<p>Kellogg Wash 50 lks. wide bears E. Ascend over roughly rolling ground.</p>
30.50	<p>Kellogg wire fence, bears S.E. and N.W.</p>
37.35	<p>Wash, bears N.E.</p>
40.00	<p>Set a granite stone 6"x8"x18", 13 ins. in the ground for 1/4 sec. cor. bet. Secs. 11 and 12, marked 1/4 on W. face, and raise a mound of stones 2 ft. base and 1 1/2 ft. high W. of cor. from which</p>
	<p>An oak 7 ins. diam. bears S. 89 1/2° E. 73 lks. dist, marked 1/4 S. 12 B.T.</p>
	<p>An Oak 10 ins. diam bears S. 52° W. 71 lks. dist. marked 1/4 S. 11 B.T.</p>
	<p>From this 1/4 cor. bet. Secs. 11 and 12, U.S.M.M.No. 3 bears S. 50° 25' W. 999ft., from which Cor. No. 1, Pandora's Box Lode, Lot No. 43 bears N. 45° E. 1556 ft, and from cor. No. 1 the cor. No. 2 of same patent bears N. 10° 32' E. 300 ft.</p>
46.70	<p>Wash, 10 lks. wide bears N.E. by E.</p>
53.35	<p>Wash, bears N.E. Thence over rough ground.</p>

## CHAINS

- 56.50 Spur, Bears W. Descend.
- 61.00 Trail, bears N.W.
- 70.20 Wash, 10 lks. wide bears S.E. Thence over rough rolling ground.
- 73.80 Trail, bears S.E.
- 74.50 Narrow sand wash bears E. Ascend.
- 77.50 Small wash bears N.E.
- 80.00 Set a granite stone 6x12x15 ins. 10 ins. in the ground for cor. of secs. 11, 12, 13 and 14 marked with 1 notch on E. and 4 notches on the S. edges from which,
- An oak 15 ins. diam. bears N.  $75^{\circ}30'$  E. <sup>126</sup> 74 lks. dist. marked T. 11 S.R. 16 E., S. 12 B.T.
- An oak 5 ins. diam. bears S.  $49^{\circ}30'$  E. 74 lks. dist. marked T. 11 S.R. 16 E., S. 13 B.T.
- An oak 10 ins. diam. bears S.  $37^{\circ}$  W. 64 lks. dist. marked T. 11 S.R. 16 E., 14 B.T.
- An oak 12 ins. diam. bears N.  $58^{\circ}30'$  W. 35 lks. dist. marked T. 11 S.R. 16 E.S. 11 B.T.
- Land roughly rolling and mountainous. Soil 3rd rate.
- Underbrush rather thick of oak and mesquite. Very little timber. Mountainous land 80.00 chs.

-----

From the corner to Secs. 11, 12, 13 and 14 I run E. over rough mountainous land. Ascend.

- 12.00 Top of spur bears S. Descend.
- 20.00 Thence over rough rocky bank of Cañon.
- 39.60 Wash of Geesman's Cañon bears N.E.
- 40.00 Set a granite stone 10"x10"x12", 9" in the ground for Quarter corner between Secs. 12 and 13, marked  $\frac{1}{4}$  on the N. face, and raise a mound of stones 2 ft. base and 1  $\frac{1}{2}$  ft. high north of corner.
- From the point far corner a black oak tree 12" in diam. marked  $\frac{1}{4}$  S. 13 B.T. bears S.  $87^{\circ}$  E., 0.55 chs. distant.
- Mountainous land 40.00 chains. Land east of this point impractical to survey. Soil stony, 3rd rate. Scattered oak timber.

July 18, 1905.

-----

July 19th, 1905.

7:30 A.M. l.m.t. I set off  $20^{\circ}56'$  N. on the decl. arc;  $32^{\circ}30'$  N. on the lat. arc and determine a meridian with the solar at the cor. of secs. 11, 12, 13 and 14.

## BOOK 1898

CHAINS.	Thence I run W. on a true line bet. Secs. 11 and 14. <sup>Descending</sup> <del>Ascending</del> over roughly rolling ground.
2.32	Small wash, bears N.E.
<del>7.85</del>	Rock wash, bears N.E. by E.
10.50	Spur, bears N. Descend.
14.10	Rocky wash, bears N. Ascend.
15.60	Spur, bears N.E. Descend
18.80	Sand wash, 10 lks. wide, bears N.E. Thence over rolling ground.
19.80	Sand wash bears S.E.
28.38	Kellogg's wire fence, bears N. and S.
29.35	Road bears N.E. and S. Ascend over rolling ground .
32.02	Small wash, bears N.
36.10	Spur, bears N. Descend over roughly rolling ground.
39.10	Wash, <sup>10 links wide</sup> bears N.
40.00	Set a quartzite stone 5 x 10 x 14 ins. 10 ins. in the ground for 1/4 sec.cor. bet. Secs. 11 and 14. marked 1/4 on N. face; from which, An oak 15 ins. diam. bears S. 30° W. 55 lks. dist. marked 1/4 S. 14 B.T. An oak 5 ins. diam. bears N. 13° W. 16 lks. dist. marked 1/4 S. 11 B.T. I set off 20° 53' N. on the decl. arc; at 12.00 m. l.m.t. and observe the sun on the mer. The lat. result is 32° 30' 1/2' N.
40.63	Sand wash, bears N.E. by E.
42.00	Wash 20 lks. wide bears S.E. ascend over sharply rolling ground.
48.00	Wash, bears S.E.
61.15	Spur, bears N.E. Descend.
62.00	Line tree 16 ins. pine.
66.00	Trail, bears N.E.
71.50	Lodge wash, <sup>40 links wide</sup> bears N.E.
76.75	Along N. bank of wash, bears E.S.E.

For this mile  
see Book C. of  
corrections

CHAINS.

77.00

Enter wash, 80 lks. wide.

80.00

Falls in bed of wash therefore I set a W.C. 1 ch. W. of cor. , as follows:

81.00

Set a quartzite stone 6 x 9 x 18 ins. 13 ins. in the ground for W.C. to cor. of Secs. 10,11,14 and 15, marked with 2 notches on the E. and 4 notches on the S. edges and W.C. on <sup>NE face</sup> N. <sub>A</sub>, and raise a mound of stones 2 ft. base 1 1/2 ft. high W. of cor. Pits impracticable.

Land roughly rolling, soil 3rd rate.

Very little timber and but little brush of mesquite and oak.

Mountainous land 80 chs.

July 19th, 1905.

July 20th, 1905.

At 7 h. 30 m. a.m. l.m.t. I set off 32° 30 1/2' N. on the lat. arc; 20° 45' N. on the decl. arc and determine a mer. with the solar at the cor. <sup>Point</sup> <sub>A</sub> to Secs. 10, 11, 14 and 15. Thence I run W. on a true line bet. Secs. 10 and 15. Ascending.

.50  
1.00  
3.10

Leave N. bank of wash.

W.C. to cor. to sec 10 11 14 and 15

Rocky wash, bears S.E. Ascend over roughly rolling ground.

6.60

Spur, bears S.E. over sharply rolling ground.

20.00

Small wash, bears S.E. Ascend.

27.00

Small wash, bears S.E. Ascend .

33.75

Spur, bears N. Descend.

40.00

Set a granite stone 8 x 9 x 12 ins. 8 ins. in the ground for 1/4 Sec. cor. bet. Secs. 10 and 15, marked 1/4 on N. face; and raise a mound of stones 2 ft. base 1 1/2 ft. high N. of cor. Pits impracticable. Ascend over rolling ground.

CHAINS.

- 42.00 Spur, bears S. Descend over roughly rolling ground.
- 51.60 Deep gulch, bears S. Ascend over rough ground.
- 56.38 Spur, bears S. Descend.
- 63.70 Sand wash, bears S.E. by S.
- 65.80 Small wash, bears S. Ascend.
- 68.00 Spur, bears S.E. by S. Descend.

At 12 h. 00 m. M. l.m.t. I set off  $20^{\circ} 42' N.$  on the decl. arc and observe the sun on the mer. The resulting lat. is  $32^{\circ} 30 \frac{1}{2}' N.$

*For B. Is. see corrected notes.*

- 71.00 Spur, bears S.W. Descend over rough ground.
- 72.15 Wash, <sup>10 links wide</sup> bears S.W.
- 73.90 Wash, <sup>10 links wide</sup> bears S.E.
- 74.10 Follow trail which bears N.W. and S.E. for 15 lks.
- 76.70 Bottom of rough rocky canon, <sup>wash 5 links wide</sup> bears S.E. Ascend.
- 77.50 Cross wash, <sup>10 links wide</sup> which runs into wash at 76.70 chs.
- 78.00 Spur, bears S.E. Ascend
- 80.00 Set quartzite stone 7 x 12 x 24 ins. 18 ins. in the

ground for cor. of Secs. 9,10,15 and 16 marked with 3 notches on E. and 4 notches on S. edges, from which

An oak 5 ins. diam., bears N.  $50 \frac{1}{2}^{\circ} E.$  74 lks. dist. marked T.11 S. R. 16 E. S. 10 B.T.

An oak 15 ins. diam. bears S.  $22 \frac{1}{2}^{\circ} E.$  76 lks. dist. marked T.11 S. R. 16 E. S. 15 B.T.

An oak 6 ins. diam. bears S.  $85 \frac{3}{4}^{\circ} W.$  54 lks. dist. marked T. 11 S. R. 16 E. S. 16 B.T.

An oak 8 ins. diam. bears N.  $61 \frac{3}{4}^{\circ} W.$  37 lks. dist. marked T.11 S. R. 16 E. S. 9 B.T.

Land roughly rolling, soil 3rd rate .

No timber but underbrush in places is very dense of oak especially within a radius of 2chs. from Sec. cor.

Mountainous land for 80 chs.

July 20th, 1905.

## CHAINS.

July 21st, 1905.

At 7 h. 30 m. a.m. l.m.t. I set off  $20^{\circ} 33 \frac{1}{2}'$  N. on the decl. arc;  $32^{\circ} 30 \frac{1}{2}'$  N. on the lat. arc, and determine a mer. with the solar at the cor. to Secs. 9, 10 15 and 16.

Thence I run S.  $0^{\circ} 2'$  E. on a true line bet. Secs. 15 and 16. Descending.

- 1.00 Rocky gulch, bears N.E. Ascend over roughly rolling ground.
- 6.00 Spur, bears E. Descend.
- 8.15 Trail, bears S.E. and N.W.
- 11.00 Rocky gulch, bears N.E. by E. Ascend.
- 15.00 Spur, bears S.E. Descend.
- 16.09 Gulch, bears S.E. Ascend over rolling ground.
- 23.15 Descend abruptly into large rocky gorge.
- 23.90 Enter gorge, bears E. Ascend.
- 25.10 Leave gorge. Ascend.
- 31.75 Spur, bears E. Descend.
- 40.00 Set a granite stone 5 x 8 x 15 ins. 10 ins. in the ground for  $\frac{1}{4}$  Sec. cor. bet. Secs. 15 and 16. marked  $\frac{1}{4}$  on W. face from which,
- An oak 6 ins. diam. bears N.  $69 \frac{1}{2}^{\circ}$  E. 49 lks. dist. marked  $\frac{1}{4}$  S. 15 B.T.
- An oak 6 ins. diam. bears S.  $82^{\circ}$  W. 20 lks. dist. marked  $\frac{1}{4}$  S. 16 B.T.
- At 12 h. 00 m. M. l.m.t. I set off  $20^{\circ} 30 \frac{1}{2}'$  N. on the decl. arc and observe the sun on the mer. the resulting lat. is  $32^{\circ} 29'$  N.
- 40.30 Rocky gulch bears N.E. by N. Ascend very abruptly.
- 46.00 Spur, bears E. Descend.
- 47.80 Road, bears S.W. Descend.
- 56.00 Canon, bears N.E. by E. Wash 1 ch. wide. Ascend steep slope over very rough ground.

CHAINS.

80.00

Set a quartzite stone 7 x 10 x 18 ins. 13 ins. in the ground for cor. of Secs. 15,16 21 and 22, marked with 3 notches on S. and E. edges and 11 S. on N.E. and 16 E. on S.E. faces and raise a mound of stones 2 ft. base 1 1/2 ft. high W. of cor. from which,

A oak 9 ins. diam. bears N. 52° W. 92 lks. dist. marked T.11 S. , R. 16 E. S. 16 B.T. No other bearing trees available.

Pits impracticable.

Land extremely mountainous soil 4th rate. and stony.

Some timber and thick underbrush of oak.

Mountainous 80 chs. Dense undergrowth 55 chs.

Cor. is 1 ch. E. of top of peak .

July 21st, 1905.

July 22nd, 1905.

At 7 h. 30 m. a.m. l.m.t. I set of f 20° 22' N. on the decl. arc; <sup>32° 30' 7"</sup>~~32° 29' 1/2"~~ on the lat. arc and determine a mer. with the solar at the cor. to Secs. 15,16,21 and 22 .

Thence I run W. on a true line bet. Secs. 16 and 21. Over ascending ground.

1.00

Top of peak, ground descends very rapidly.

7.40

Rocky gulch bears N. Ascend.

10.00

Spur, bears N.E. by N. ground descends rapidly.

18.00

Rocky gulch, bears N.E. Ascend.

19.00

Wash and trail, bear <sup>X</sup>N.E. by E. ground ascends abruptly.

27.50

Rocky spur, bears N.E. ground is roughly rolling.

31.00

Rough rocky spur bears N.E. descend abruptly..

36.27

Wash bears N.E. Ascend over rocky ground.

*For B.J. see corrected notes.*

## CHAINS.

40.00

Set a quartzite stone 5 x 8 x 12 ins. 8 ins. in the ground for 1/4 sec. cor. bet. Secs. 16 and 21, marked 1/4 on N. face from which,

A oak 5 ins. diam. bears N. 72° E. 18 lks. dist. marked 1/4 S. 16 B.T.

A oak 6 ins. diam. bears S. 43° W. 10 lks. dist. marked 1/4 S. 21 B.T.

Continue ascent.

At 12 h. 00m. m. l.m.t. I set off 20° 19' N. on the decl. arc and observe the sun on the mer. the resulting lat. reading is 32° 29 1/2' N.

44.00

Spur, bears N.E. Descend over rocky ground.

46.50

Rocky gulch, bears N.E. banks are very abrupt. Ascend.

47.10

Sand wash 30 lks. wide bears N.E. Ascend abruptly.

50.00

Ridge, bears N.E. Enter underbrush of scrub oak very dense.

55.00

Rocky gulch bears N.E. Ascend the steep eastern slope of Marble Peak.

74.80

Rocky gorge, bears S.E. by S. Ground ascends abruptly through thick underbrush of oak, and over very rocky ground.

79.40

Gulch, bears S.E. Ascend very abruptly.

80.00

Set a quartzite stone 8 x 9 x 15 ins. 10 ins. in the ground for cor. of Secs. 16, 17, 20 and 21, marked with 4 notches on the E. and 3 notches on S. edges from which

A walnut 6 ins. diam. bears N. 61 1/2° E. 22 lks. dist. marked T.11 S. R.16 E. S.16 B.T.

A oak 6 ins. in diam. bears S. 60° E. 11 lks. dist. marked T.11 S. R.16 E. S.21 B.T.

A oak 6 ins. diam. bears S. 59 1/2° W. 7 lks. dist. marked T.11 S. R. 16 E. S. 20 B.T.

A oak 5 ins. diam. bears N. 25 1/2° W. 13 lks. dist. marked T.11 S. R. 16 E. S. 17 B.T.



CHAINS.

Land very rocky and mountainous , soil 4th rate, broken by deep canons.

Underbrush of oak very thick .

Mountainous 80 chs.

Top of Marble Peak 60 chs. W.

July 22nd, 1905.

CHAINS.

July 23, 1905.

At 7 h. 30 m. A.M. l.m.t. I set off  $20^{\circ} 10' N.$  on the decl. arc; <sup>32' 30'</sup>  ~~$32^{\circ} 29' 1/2' N.$~~  on the lat. arc and determine a mer. with the solar at the cor. to Secs. 16, 17, 20 and 21.

Thence I run S.  $0^{\circ} 2' E.$  on a true line bet. Secs. 20 and 21. Descending through thick underbrush of oak and walnut.

- 1.00 Spur, bears S.E. Descend.
- 7.00 Rocky gulch, bears E. Ascend.
- 9.00 Spur, bears E. Descend.
- 13.00 Rocky gulch, bears S.E. Ascend.
- 15.00 Rocky gulch, bears S.E. by E.
- 21.00 Spur, bears E. Descend over very rough ground.
- 24.00 Rocky gulch, bears N.E. by E. Ascend about a  $25^{\circ}$  slope over rough rocky ground.
- 40.00 Set a granite stone 8 x 10 x 15 ins. 10 ins. in the ground for  $1/4$  sec. cor. bet. Secs. 20 and 21 marked  $1/4$  on W. face, and raise a mound of stones 2 ft. base  $1 1/2$  ft high W. of cor. from which,
  - A $\eta$  oak 5 ins. diam. bears N.  $62 1/2^{\circ} E.$  24 lks. dist. marked  $1/4$  S. 21 B.T.
  - A $\eta$  oak 6 ins. diam. bears S.  $34^{\circ} W.$  44 lks. dist. marked  $1/4$  S. 20 B.T.

CHAINS:

July 23, 1905. I set off  $20^{\circ} 6\frac{1}{2}'$  N. on the decl. arc and at 12 h. O M. M. l.m.t. I observe the sun on the mer. The resulting lat. is  $32^{\circ} 29\frac{1}{2}'$  N.

42.00

Ridge, bears E. Descend a very steep slope.

44.00

Spur, bears N.W. Descend over very rough ground. the Apache Mining Camp bears W. 15.00 chs. from this point.

55.50

Rocky gorge, bears S.W. ~~Descend~~ <sup>Ascend</sup> very abruptly.

59.00

Spur, bears N.W. Descend over very rough ground.

71.50

Deep rocky gorge, <sup>walk 1<sup>1</sup>/<sub>2</sub> wide</sup> bears S.W. by S. Ascend over very rough ground covered with underbrush of oak .

75.50

Rocky spur, bears S.E. Descend.

77.95

Line tree 12 ins. oak.

78.30

Set a granite stone 8 x 7 x 30 ins. 20 ins. in the ground for W.C. to cor. of Secs. 20, 21, 28 and 29 marked with 4 notches on the E. and 2 notches S. edges and W.C. on N.E. face from this cor.

A oak 7 ins. diam. bears N.  $64^{\circ}$  E. 61 lks. dist. marked T. 11 S. R. 16 E. S. 21 B.T. W.C.

A oak 10 ins. diam. bears S.  $14\frac{1}{2}^{\circ}$  E. 33 lks. dist. marked T. 11 S. R. 16 E. S. 21 B.T. W.C.

A oak 6 ins. diam. bears S.  $78\frac{1}{2}^{\circ}$  W. 66 lks. dist. marked T. 11 S. R. 16 E. S. 20 B.T. W.C.

A oak 6 ins. diam. bears N.  $30^{\circ} 45'$  W. 71 lks. dist. marked T. 11 S. R. 16 E. S. 20 B.T. W.C.

80.00

Falls at bottom of deep box canon, <sup>110 ch wide</sup> bears E. N.E. with almost perpendicular sides and therefore it is impracticable to set Sec. cor. at 80.00 chs.

Land extremely mountainous soil 4th rate

Underbrush very thick of shrub oak.

Mountainous land 80.00 chs.

July 23, 1905.

CHAINS.

July 24, 1905.

At 7 h. 30 m. A.M. l.m.t. I set off 19° 57' 1/2' N. on the decl. arc 32° 29' N. on the lat. arc and determine a mer. with the solar at the witness corner to Secs. 20, 21, 28 and 29.

Inasmuch as the true line W. from the actual cor. of Secs. 20, 21, 28 and 29 passes for about 20 chs. over cliffs and rough, unsurveyable land I run W. from the witness corner on an offset of 1.70 chs. N. from true line bet. Secs. 20 and 29, Ascend steep slope through dense undergrowth of oak and manszanita.

- 10.87 Offset 70 lks. S. Ascend. *thence west to*
- 20.00 Offset 1 ch. S. to Sec. line bet. Secs. 20 and 29.
- 28.20 Rocky Spur, bears S. covered with thick underbrush of shrub oak. Descend.

July 24, 1905 at 12 H. 0 m. M. l.m.t. I set off 19° 54' N. on the decl. arc and observe the sun on the mer. the resulting lat. is 32° 29' 7"

- 30.00 Rocky wash, bears S. ground extremely mountainous.
- 33.00 Rocky gulch, bears S.E.
- 40.00 Set a quartzite stone 8 x 9 x 18 ins. 13 ins.

in the ground for a 1/4 Sec. cor. bet. Secs. 20 and 29 marked 1/4 on N. face and raise a mound of stones 2 ft. base 1 1/2 ft. high N. of cor. from which,

An oak 8 ins. diam. bears N. 82° W. 56 lks. dist. marked 1/4 S. 20 B.T.

An oak 5 ins. diam. bears S. 40° W. 17 lks. dist. marked 1/4 S. 29 B.T.

Land extremely mountainous soil 4th rate.

Dense underbrush shrub oak.

Mountainous land 40chs.

July 24, 1905.

## CHAINS.

July 25th, 1905.

At 7 h. 30 m. A.M. l.m.t. I set off  $19^{\circ} 45' N.$  on decl. arc;  $32^{\circ} 29' N.$  on the lat. arc and determine the mer. at the  $1/4$  cor. bet. Secs. 20 and 29 .

From thence I run W. on a true line bet. Secs. 20 and 29 ground ascends. *continue measurement*.

40.15

Road, bears N.E. and S.W. Ascend over extremely mountainous country.

43.00

Sand wash, bears S.E.

63.00

Enter rocky gorge bears N. 200 ft. deep. Extremely rough country. Enter pine timber.

July 25th, 1905. At 12 h. 0 m. M. l.m.t. I set off  $19^{\circ} 41' 1/2'' N.$  on the decl. arc and observe the sun on the mer. the resulting lat. reading is  $32^{\circ} 29' N.$

70.00

Leave rocky gorge ascend steep slope.

80.00

Set granite stone 8 x 7 x 20 ins. set 15 ins. in the ground for cor. of Secs. 19, 20 29 and 30 marked with 5 notches on E. and 2 notches on S. edges and raise a mound of stones 2 ft. base  $1 1/2$  ft. high W. of cor. from which,

A pine 12 ins. in diam. bears N.  $38^{\circ} E.$  55 lks. dist. marked T. 11 S. R. 16 E. S. 20 B.T.

A pine 25 ins. in diam. bears S.  $9 1/2^{\circ} E.$  187 lks. dist. marked T. 11 S. R. 16 E. S. 29 B.T.

A pine 20 ins. diam. bears S.  $53^{\circ} W.$  112 lks. dist. marked T. 11 S. R. 16 E. S. 30 B.T.

A pine 8 ins. diam. bears N.  $52^{\circ} W.$  41 lks. dist. marked T. 11 S. R. 16 E. S. 19 B.T.

Land extremely mountainous soil 4th rate.

Covered with dense underbrush of oak. Pine timber of large diam.

Extremely mountainous land 80.00 chs.

July 25th, 1905.

## CHAINS.

July 26th, 1905.

At 7 h. 30 m. A.M. l.m.t. I set off  $19^{\circ} 32'$  N. on the decl. arc;  $32^{\circ} 29'$  N. on the lat. arc and determine a mer. with the solar at the cor. to Secs. 19, 20, 29 and 30 .

Thence I run S.  $0^{\circ} 3'$  E. on a true line bet. Secs. 29 and 30 enter heavy growth of pine timber.

- 12.00 Spur, bears S.E. by E. Descend through thick underbrush of oak.
- 20.10 Line tree 10 ins. oak descend along gulch bearing S.E. by S.
- 24.00 Road, bears E. and W.
- 25.00 Ruins of saw mill bears W. 3 chs.
- 26.75 Leave gulch, bears E. Ascend over rough rolling ground.
- 31.00 Spur, bears E. Descend.
- 37.00 Rocky wash, 30 lks. wide bears N.E. Ascend steep slope.
- 40.00 Set granite stone 6 x 8 x 18 ins. 13 ins. in the ground for  $1/4$  Sec. cor. bet. Secs. 29 and 30. marked with  $1/4$  on W. face from which,  
 A pine 25 ins. diam. bears, S.  $83^{\circ}$  E.  $30$  lks. dist. marked  $1/4$  S. 29 B.T.  
 A pine 10 ins. diam. bears N.  $55 \frac{1}{2}^{\circ}$  W. 43 lks. dist. marked  $1/4$  S. 30 B.T.
- July 26th, 1905. At 12 h. 0 m. M. l.m.t. I set off  $19^{\circ} 28 \frac{1}{2}'$  N on the decl. arc and observe the sun on the mer. the resulting lat. is  $32^{\circ} 28 \frac{1}{2}'$  N.
- 43.00 Spur, bears N.E.
- 44.80 Descend over roughly rolling ground, along the eastern slope of mountain.
- 61.00 Rocky gulch, bears S.E. ascend.
- 63.50. Spur, bears E. Descend over extremely rough ground.
- 68.00 Rocky gulch, bears S.E. ascend.

## CHAINS.

- 69.00 Spur, bears E. Descend.
- 77.00 Rocky gulch, bears E. enter dense pine forest.
- 80.00 Set granite stone 8 x 10 x 15 ins. 10 ins. in the ground for cor. of Secs. 29, 30, 31 and 32, marked with 5 notches on the E. and 1 notch on S. edges, from which,
- A pine 12 ins. diam. bears N. 23° E. 39 lks. dist. marked T. 11 S. R. 16 E. S. 29 B.T.
- A pine 10 ins. diam. bears S. 19° E. 27 lks. dist. marked T. 11 S. R. 16 E. S. 32 B.T.
- A oak 18 ins. diam. bears S. 68° W. 46 lks. dist. marked T. 11 S. R. 16 E. S. 31 B.T.
- A pine 15 ins. diam. bears N. 43 1/2° W. 48 lks. dist. marked T. 11 S. R. 16 E. S. 30 B.T.
- Land extremely mountainous soil 3rd rate.
- Underbrush of oak heavy growth of pine and fir timber.
- Mountainous land 80 chs.
- July 26th, 1905.
- 
- July 27th, 1905.
- At 7 h. 30 m. A.M. l.m.t. I set off <sup>19 18 1/2 m</sup> ~~19° 19' N.~~ on the decl. arc, 32° 28' N. on the lat. arc and determine a mer. with the solar at the cor. to Secs. 29, 30 31 and 32.
- Thence I run W. on a true line bet. Secs. 30 and 31 ascending over extremely mountainous ground.
- 5.00 Land extremely rough. Inasmuch as the line will pass over broken and unsurverable ground I offset 6 chs. to the S. *and run West*
- 25.00 Ridge, heavily timbered with pine. *Descend* Ascend. 25° S. 1/2 E.
- 31.00 Return to Sec. line bet. Secs. 30 and 31, 6 chs. N. Ascend.
- 36.50 Ridge, bears S.E. Descend.

CHAINS.	
38.38	Line tree 7 in. pine.
40.00	Set granite stone 8 x 10 x 15 ins. 10 ins. in the ground for 1/4 Sec. cor. bet. Secs. 30 and 31, marked 1/4 on N. face, from which, A pine, 15 ins. diam. bears S. 45 1/2° E. 34 lks. dist. marked 1/4 S. 31 B.T. A pine 9 ins. diam. bears N. 12° W. 14 lks. dist. marked 1/4 S. 30 B.T.
59.50	Mount Lemon is directly on line about 120 chs. W. July 27 1905; I set off 19° 15' N. on the decl. arc; and at 12h 0m, m. l.m.t. I observe the sun on the mer. The resulting lat. reading is 32°-28' N. Continue descent. Creek 20 lks. wide (running water) bears S. dense underbrush of willow.
60.00	Webber's <b>Ranch</b> bears S. 14° 50' W. 13.80 chs. Ascend.
61.82	Line tree 30 ins. pine
70.00	Wash 10 lks. wide bears S.E.
70.65	Line tree 18 in. pine.
72.00	Wash 10 lks. wide bears S.E.
77.25	Trail bears S.E. by E.
78.08	Set quartzite stone 10 x 18 x 20 ins. 15 ins. in the ground for Sec. cor. to Secs. 30 and 31, T. 11 S. R. 16 E. and 25 and 36, T. 11 S. R. 15 E. marked with 5 notches on N. and 1 notch on S. edges, and raise a mound of stone 2 ft. base 1 1/2 ft. high W. of cor. from the cor. A pine 10 in. diam. bears N. 45° 15' E. 44 lks. dist. marked T. 11 S. R. 16 E. S. 30 B.T. A pine 8 ins. diam. bears S. 11° E. 59 lks. dist. marked T. 11 S. R. 16 E. S. 31 B.T. A pine 12 ins. diam. bears S. 59° W. 35 lks. dist. marked T. 11 S. R. 15 E. S. 36 B.T. A pine 20 ins. diam. bears N. 56° W. 25 lks. dist. marked T. 11 S. R. 15 E. S. 25 B.T. Land mountainous, soil 3rd rate.

## CHAINS.

Heavily timbered with pines.

Mountainous and heavily timbered land 78.08 chs.

July 27th, 1905.

July 28th, 1905.

At 7 h. 30 m. A.M. l.m.t. I set off  $19^{\circ} 5' N$  on the decl. arc,  $32^{\circ} 28' N$  on the lat. arc and determine a mer. with the solar at cor. to Secs. 30 and 31 T. 11 S. R. 16 E. and Secs. 25 and 36 T. 11 S. R. 15 E.

Thence I run south on a true line bet. Secs. 31, T. 11 S. R. 16 E. and Secs. 36 T. 11 S. R. 15 E.

3.00 Line tree 10 in. pine Descend.  
 11.00 Canon (wash 20 lks. wide) and trail bear E. ascend  
 11.80 Creek, bears S.E. by S. 10 lks. wide.  
 16.00 Wash, bears N.E. by E.  
 18.35 Line tree 36 in. pine.  
 21.60 Wash, bears N.E.  
 24.30 Wash, 15 lks. wide, bears N.E. enter dense growth  
 Alpine Asp. Ascend.

July 28th, 1905. At 12 h. 5 m. P.M. l.m.t. I set off  ~~$19^{\circ} 1 1/4' N$~~   <sup>$19^{\circ} 2' 37''$</sup>  on the decl. arc and observe the sun on the mer. the resulting lat. reading is  $32^{\circ} 28' N$ .

34.00 Leave Alpine Asp woods descend.  
 40.00 Set granite stone 7 x 10 x 18 ins. 12 ins. in the ground for 1/4 Sec. cor. bet. Secs. 31 T. 11 S. R. 16 E. and Sec. 36 T. 11 S. R. 15 E. marked 1/4 on W. face from which,

A pine 30 ins. diam. bears S.  $14 1/2^{\circ} E$ . 55 lks. dist. marked 1/4 S. 31 B.T.

A pine 24 ins. diam. bears S.  $87 1/2^{\circ} W$ . 74 lks. dist. marked 1/4 S. 36 B.T.

Land extremely mountainous and S. of 1/4 Cor. is impracticable to survey. Soil 4th rate.



## CHAINS.

Mountainous land 40 chs.

Pine forest 40 chs. Some undergrowth of pine and Juniper.

July 28th, 1905.

July 29th, 1905.

At 7 h. 30 m. A.M. l.M.t. I set off  $18^{\circ} 51' N.$  on the decl. arc,  $32^{\circ} 28' N.$  on the lat. arc and determine the mer. at the  $1/4$  Sec. cor. bet. Secs. 31 T. 11 S. R. 16 E. and Sec. 36 T. 11 S. R. 15 E.

Thence I run E. on a true line descending through dense pine timber.

11.31 Line tree 24 in. pine.

15.06 Trail, bears N.E.

17.16 Line tree 40 in. pine.

26.96 Rocky gulch, bears S.E. by S. Stream 10 lks. wide. ascend.

38.12 Set quartzite stone 7 x 8 x 20 ins. 15 ins. in the ground for center cor. of Sec. 31 marked center Sec. 31 on W. face from which,

A pine 12 ins. diam. bears N.  $71 \frac{1}{2}^{\circ} E.$  47 lks. dist. marked N.E.  $1/4$  Sec. 31 T. 11 S. R. 16 E. B.T.

A pine 18 ins. diam. bears S.  $35^{\circ} E.$  92 lks. dist. marked S.E.  $1/4$  Sec. 31 T. 11 S. R. 16 E. B.T.

A pine 15 ins. diam. bears S.  $18^{\circ} W.$  16 lks. dist. marked S.W.  $1/4$  Sec. 31 T. 11 S. R. 16 E. B.T.

A pine 18 ins. diam. bears N.  $27 \frac{1}{4}^{\circ} W.$  40 lks. dist. marked N.W.  $1/4$  Sec. 31 T. 11 S. R. 16 E. B.T.

Land extremely mountainous, Soil 3rd rate. 38.12 chs.

Land E. of this cor. impracticable to survey.

July 29th, 1905. At 12 h. 10 m. P.M. l.m.t. I set off  ~~$18^{\circ} 47' N.$~~   <sup>$18^{\circ} 48' N.$</sup>  on the decl. arc, and observe the sun on the mer. the resulting lat. reading is  $32^{\circ} 28' N.$

From center cor. of Sec. 31 I run N.  $0^{\circ} 3' W.$  on a true line, ascending.

## CHAINS.

- 11.66 Small wash, bears W..
- 14.10 Trail from Webber's camp to Agua Caliente bears S.E.
- 19.80 Small wash, bears S.E. by E. Ascend over roughly rolling ground.
- 24.20 Small wash, bears W.
- 25.80 Wash, bears S.W. by W.
- 30.50 Bottom of granite rock cliff 35 ft. high.
- 40.01 1/4 Sec. cor. bet. Secs. 30 and 31 on line.  
Land mountainous Soil 4th rate.  
Underbrush of oak heavy growth of pines.  
Mountainous land ~~40 chs.~~ *40.01 chs.*  
Heavily timbered land ~~40 chs.~~ *40.01 chs.*

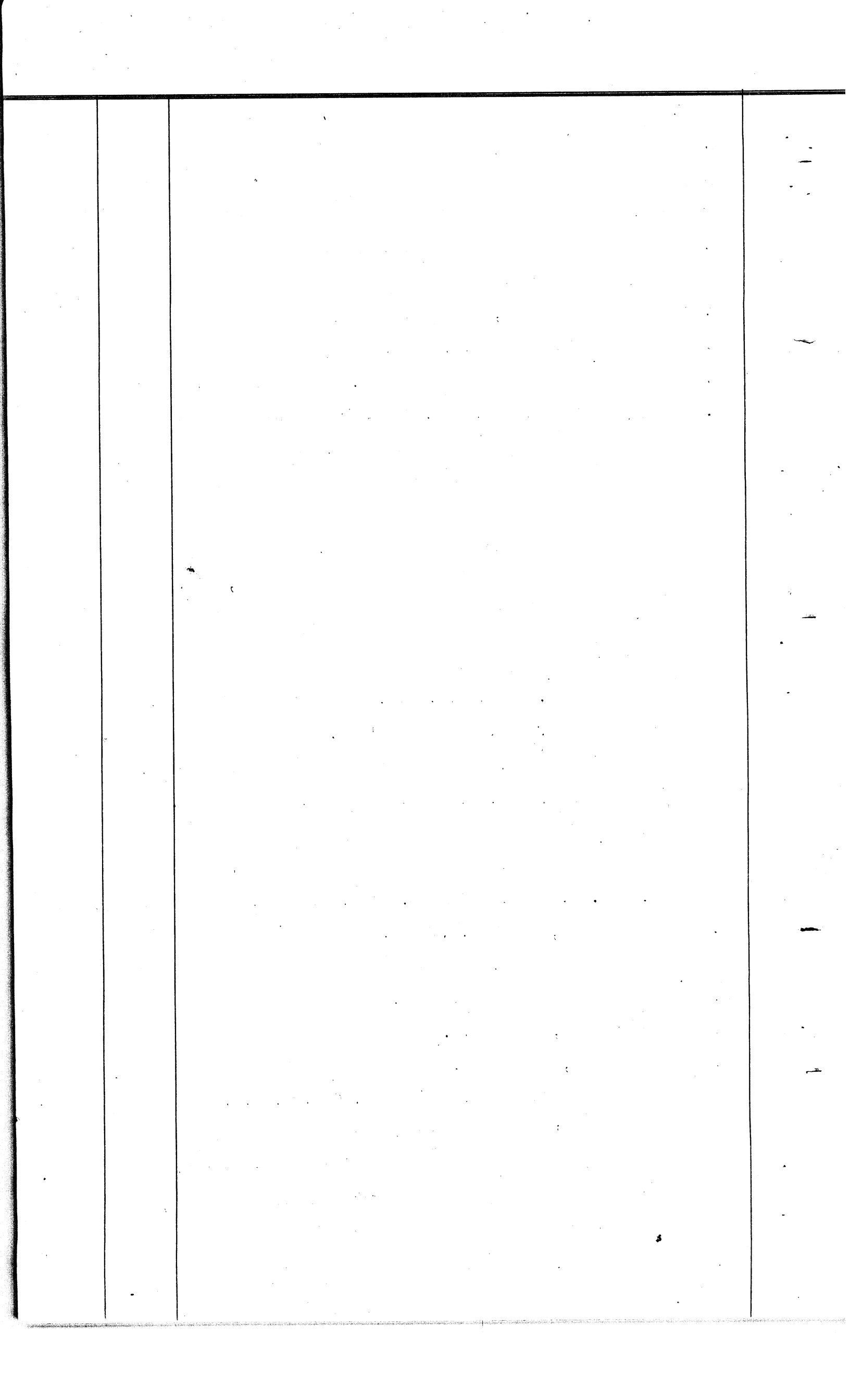
July 29, 1905.

July 30th, 1905.

At 7 h. 30 m. A.M. l.m.t. I set off  $18^{\circ} 37'$  N. on the decl. arc,  $32^{\circ} 28' \frac{1}{2}$  N. on the lat. arc and determine a mer. with the solar at the cor. to Secs. 30 and 31 T.11 S. R. 16 E. and Secs. 25 and 36 T.11 S. R. 15 E.

Thence I run north on a true line bet. Secs. 30 T.11 S. R. 16 E. and 25 T. 11 S. R. 15 E. Ascending.

- 9.00 Spur, bears N.E. by E. Descend through heavy growth of pine and fir.
- 15.43 Line tree 18 in. pine.
- 19.40 Trail, bears N.E.
- 21.10 Wash, bears N.E.
- July 30th, 1905. At 12 h. 0 m. M. l.m.t. I set off  $18^{\circ} 33'$  N. on the decl. arc and observe the sun on the mer. the resulting lat. reading is  $32^{\circ} 28' \frac{1}{2}$  N.  ~~$32^{\circ} 29'$  N.~~  
*West branch Sabino Canon Head*
- 23.15 Creek (with running water) 15 lks. wide, bears S.E. by E. Ascend over very rocky ground.
- 23.80 Trail, bears W.



CHAINS.

27.75 Trail, bears S.W. by W.

28.59 Line tree 18 in. fir.

36.00 Opposite head of ~~Canada~~ Del Oro, bears W. about 40 chs.

Canada Del Oro bears N. Descend.

40.00 Set quartzite stone 6 x 10 x 15 ins. 10 ins. in the ground for 1/4 Sec. cor. bet. Sec. 30 T.11 S. R. 16 E. and Sec. 25 T.11 S. R. 15 E. marked 1/4 on W. face and raise a mound of stone 2 ft. base 1 1/2 ft. high W. of cor. from which,

A fir 36 in. diam. bears S. 88 1/2° E. 120 lks. dist. marked 1/4 S. 30 **BT**.

A fir 48 in. in diam. bears N. 81° W. 45 lks. dist. marked 1/4 S. 25 **BT**.

Land mountainous. Soil 3rd rate.

Heavy pine and fir timber and some underbrush of fir and oak.

Mountainous 40 chs. Heavily timbered land 40 chs.

Land N. of 1/4 Sec. cor. extremely mountainous and impracticable to survey.

July 30, 1905.

---

July 31st, 1905.

At 7 1/2. 30 m. A.M. 1.m.t. I set off 18° 22' N. on the decl. arc <sup>32° 28 1/2' m</sup> ~~32° 29'~~ N. on the lat. arc and determine a mer. with the solar at the 1/4 Sec. cor. bet. Secs. 30 T. 11 S. R.16 E. and 25 T.11 S. R.15 E.

Thence I run E. on a true line over ascending ground.

3.25 Spur, bears N.E. Descend over extremely mountainous ground.

5.20 Deep rocky gorge, bears N.E.

8.00 Gulch, bears N.E. by N. Ascend.

12.00 Spur, bears N. Descend.

30.00 Deep canon (wash 20 lks. wide) bears N.

CHAINS.

38.04

Set quartzite stone 8 x 10 x 18 ins. 13 ins. in the ground for center monument of Sec. 30 and marked center S. 30 on W. face and raise a mound of stone 2 ft. base 1 1/2 ft. high W. of cor. from which,

A pine 25 ins. diam, bears N. 24 1/2° E. 41 lks. dist. marked N. E. 1/4 S. 30 T.11 S. R. 16 E. B.T.

A pine 10 ins. diam. bears S. 21° E. 46 lks. dist. marked S.E. 1/4 S. 30 T.11 S. R.16 E. B.T.

A pine 18 ins. diam. bears S. 61° W. 73 lks. dist. marked S.W. 1/4 S. 30 T.11 S. R.16 E. B.T.

A pine 15 ins. diam. bears N. 52 1/2° W. 83 lks. dist. marked N.W. 1/4 S. 30 T.11 S. R. 16 E. B.T.

Land extremely mountainous. Soil 4th rate

Heavily timbered with pine and fir. Underbrush of oak very dense.

Extremely mountainous ~~40 chs.~~ *38.04 chs.*

Land E. and N. of this place is impracticable to survey

-----  
Therefore I begin at this center cor. to Sec. 30 and run on a true line S. 0° 3' E. Descending.

.50

Small wash, bears W. Ascend.

2.80

Line tree 20 in. pine.

4.70

Trail, from Webber's to Kellogg's, bears N.E.

July 31st, 1905. At 12 h. Om. M. l.m.t. I set off ~~18° 18' N.~~ <sup>18° 19' N.</sup> on the decl. arc and observe the sun on the mer. the resulting lat. reading is ~~32° 29' N.~~ <sup>32° 28 1/2' N.</sup>

6.20

Canon, bears N.E.

8.60

Head of canon, bears N.E. by E. Branch of Canada Del Oro.

11.40

Small wash, bears N.W. Ascend.

14.85

Top of divide. descend.

23.40

Small wash, bears S.W. by W. *East branch Sabino Cañon Head*

27.95

Line tree, 15 in. pine.

32.26

Line tree, 10 in. pine. ground roughly rolling.

## CHAINS.

39.98

1/4 Sec. cr. bet. Secs. 30 and 31 T. 11 S.  
R. 16 E.

Land mountainous; soil 3rd rate. *stony.*

Heavy pine timber, very little underbrush.

Mountainous land ~~40 chs.~~ *39.98 chs.*

Heavily timbered land ~~40 chs.~~ *39.98 chs.*

July 31st, 1905.

---

GENERAL REMARKS .

The lines run in this township nearly all pass over mountainous land. The ascent of the Catalina range proper begins at corner to sections 9, 10, 15 and 16 and the ascent becomes more and more rugged as the survey progresses.

At 63 chains between sections 20 and 29 the line enters heavy growth of pine timber and does not leave the same through the remainder of the survey.

Around the base of Marble Peak there are indications of copper. At this point the country rock is white limestone while a mile south the country rock seems to run into granite.

T. 11 S. R. 16 E. generally speaking is an impracticable township to sub-divide.

*Aug 1, 1905.*

*William B. Alexander*

U.S. Deputy Land Surveyor.

FINAL OATH OF UNITED STATES DEPUTY SURVEYOR.

BOOK 1898

I, William B Alexander, United States Deputy Surveyor, do solemnly swear that, in pursuance of a contract received from Frank S. Ingalls United States Surveyor General for Arizona, bearing date of the 4<sup>th</sup> day of May, 1895, I have well, faithfully, and truly, in my own proper person, and in strict conformity with the instructions furnished by the United States Surveyor General for Arizona, the Manual of Surveying Instructions, and the laws of the United States, surveyed all those parts or portions of Township 11 South Range 16 East necessary to embrace the agricultural claims of Frank Webber and William Kellogg by legal subdivisions and fractional west boundary of the Sierra + Salt River meridian, in the Territory of Arizona, which are represented in the foregoing field notes as having been surveyed by me, and under my direction; and I do further solemnly swear that all the corners of said survey have been established and perpetuated in strict accordance with the Manual of Surveying Instructions, and the special written instructions of the United States Surveyor General for Arizona and in the specific manner described in the field notes, and that the foregoing are the original field notes of such survey; and should any fraud be detected, I will suffer the penalty of perjury under the provisions of an Act of Congress approved August 8, 1846.

William B Alexander  
United States Deputy Surveyor.

27A  
BOOK 1898

Subscribed by said William B Alexander and sworn to before me this 1<sup>st</sup> day of August 1905.

Clinton D. Hoover, Clerk  
District Court, First Judicial  
District, Territory of Arizona  
By Allen B. Hughes  
Deputy

the territory of Arizona

executed by Wm B Alexander, U.S. deputy Surveyor under his contract No. 131, dated May 4, 1905, 1895, having been critically examined, and the necessary corrections and explanations made, the said field notes, and the surveys they describe, are hereby approved.

Frank S. Ingalls  
United States Surveyor General.

I certify that the foregoing transcript of the field notes of the above described surveys in \_\_\_\_\_, has been correctly copied from the original notes on file in this office.

United States Surveyor General.

LIST OF NAMES.

BOOK 1898

A list of the names of the individuals employed by William D. Alexander

Alexander, United States Deputy Surveyor, to assist in running, measuring, and marking the lines and corners described in the foregoing field notes of the survey of Subdivisional lines in T.11S R.16E and fractional west boundary of same showing the respective capacities in which they acted:

R. B. Calxvalade, Chainman.

J. E. Mestayer, Chainman.

Fredrick W. Wengert, Moundman.

Albert Sully, Axman.

Homer Batte, Flagman.

FINAL OATH OF ASSISTANTS.

We hereby certify that we assisted William D. Alexander

Tucson, Arizona, United States Deputy Surveyor, in surveying all those parts or portions of the Subdivisional lines and fractional west boundary

in T.11S R.16E, S + S.R. R. + W, Arizona, necessary to embrace the agricultural farms of William Kellogg and Frank W. Weber

meridian, of Arizona, which are represented in the foregoing field notes as having been surveyed by him and under his direction; and that said survey has been in all respects, to the best of our knowledge and belief, well and faithfully surveyed, and the corner monuments established, according to the instructions furnished by the United States Surveyor General for Arizona.

R. B. Calxvalade, Chainman.

J. E. Mestayer, Chainman.

Fredrick W. Wengert, Moundman.

Albert Sully, Axman.

Homer Batte, Flagman.

Subscribed and sworn to before me this 1st day of August, 1895.  
My Commission Expires Sept. 24, 1906.



Ralph W. Saugent  
Notary Public



NAMES AND DUTIES OF ASSISTANTS.

BOOK 1898

Duran Daily, Chairman.

William H. Putnam "

Jesus Lopez Moundman.

Carver Murgida Axman

Henry Harmon Flagman.

BOOK 1898

INDEX DIAGRAM.

Township 11 South Range 1 & East

6	5	4	3	2	1
7	8	9	10	11	12
18	17	16	15	14	13
19	20	21	22	23	24
30	29	28	27	26	25
31	32	33	34	35	36

Handwritten notes on the table:  
 - A '5' is written in the left margin next to row 19.  
 - A '2' is written in the left margin next to row 31.  
 - '2 up 3' is written at the bottom left of the table.  
 - 'Sand 4' is written vertically in the left margin next to row 31.

Meanders Page.....

PRELIMINARY OATHS OF ASSISTANTS.

38  
BOOK 1898

WE, Duran Daily and William H Putnam

do solemnly swear that we will well and faithfully execute the duties of chainmen; that we will level the chain over even and uneven ground, and plumb the tally pins, either by sticking or dropping the same; that we will report the true distances to all notable objects, and the true lengths of all lines that we assist in measuring, to the best of our skill and ability, and in accordance with instructions given us, in the survey of

S 1/2 of W. boundary, S and E boundary Sec 31; and C 1/2 of N boundary Sec 30,  
T11S R16E S and S 1/2 M. Arizona.

Duran Daily, Chainman.

William H Putnam, Chainman.

Subscribed and sworn to before me this 8th

day of April, 1896

My Commission Expires Sept. 24, 1906



Ralph W Langworthy  
Notary Public

I, Jesus Lopez

do solemnly swear that we will well and truly perform the duties of moundmen in the establishment of corners, according to the instructions given us, to the best of our skill and ability, in the survey of

S 1/2 of W. boundary, S and E boundary Sec 31; and C 1/2 of  
N boundary Sec 30, T11S R16E S and S 1/2 M. Arizona.

Jesus Lopez, Moundman.

....., Moundman.

Subscribed and sworn to before me this 8th

day of April, 1896

My Commission Expires Sept. 24, 1906



Ralph W Langworthy  
Notary Public

I, Carmen Mungia

do solemnly swear that we will well and truly perform the duties of axman in the establishment of corners and other duties, according to instructions given us, to the best of our skill and ability, in the survey of

S 1/2 of W boundary, S and E boundary Sec 31; and C 1/2 of  
N boundary Sec 30. T11S R16E S and S 1/2 M. Arizona.

Carmen Mungia, Axman.

....., Axman.

Subscribed and sworn to before me this 8th

day of April, 1896

My Commission Expires Sept. 24, 1906



Ralph W Langworthy  
Notary Public

I, Henry Harmon, do solemnly swear that I will well and truly perform the duties of flagman according to instructions given me, to the best of my skill and ability, in the

survey of S 1/2 of W boundary, S and E boundary Sec 31; and C 1/2 of  
N boundary Sec 30 T11S R16E. S and S 1/2 M. Arizona.

Henry Harmon, Flagman.

Subscribed and sworn to before me this 8th

day of April, 1896

My Commission Expires Sept. 24, 1906



Ralph W Langworthy  
Notary Public

Upon submitting Field Notes under Contract 131, dated May 4, 1905, I am instructed by the United States Surveyor General for the District of Arizona, in office letter dated September 23, 1905, to proceed to the field and execute the following additional surveys, to-wit:

The South 1/2 of the West boundary, the South boundary and the East boundary of Sec. 31; and the North 1/2 of the West boundary, and the North boundary of Sec. 30, T. 11 S., R. 16 E. of the Gila and Salt River Meridian, Arizona.

By reason of the inclement weather and heavy snow fall in this high altitude, I am unable to execute these surveys until April, 1906.

BOUNDARY LINES SEC. 31, T. 11 S., R. 16 E.

Survey commenced April 10, 1906, and executed with a Young & Sons light mountain transit No. 7520; the horizontal limb having double verniers placed opposite each other and reading to single minutes of arc, which is also the least reading of the declination and latitude arcs.

At the 1/4 corner between Secs. 36 and 31, T. 11 S., Rs. 15 and 16 E., Gila and Salt River Base and Meridian, Arizona, Previously established by me in Lat.  $32^{\circ} 27'$  <sup>North</sup> ~~South~~; Long.  $110^{\circ} 46'$  West, at 4 h. 30 m. p.m. l.m.t., I set off  $32^{\circ} 27'$  <sup>32.2 p/m</sup> N. on the latitude arc,  $7^{\circ} 55'$  N. on the decl. arc, and determine a meridian with the solar and mark the point thereof by tack driven in a stake set firmly in the ground about 5 ch. N. of my station.

At said 1/4 corner at 6 h. 8. m. p.m. l.m.t. I observe polaris at its Western elongation, turn off  $1^{\circ} 25'$  to the East, and mark the meridian thus obtained by a tack driven in the stake set this afternoon by the solar. This point falls 0.01 ft. West of the Tack driven upon solar meridian this P.M.

April 10, 1906.

CHAINS

April 11, 1906.

At 7 h. 30 m. A.M. l.m.t. I set off ~~32° 23' N~~<sup>32° 28' N</sup> on the lat. arc, 8° 9' N. on the decl. arc. and determine a meridian with the solar at 1/4 cor. between Secs. 31 and 36. This Meridian falls 0.02' East of the tack set by stellar observation. I find upon examination that bubble and collimation adjustments are perfect, hence I conclude instrument <sup>is</sup> in satisfactory condition for work.

From this 1/4 cor. between Secs. 31 and 36, T.11 S., Rs. 15 and 16 E. I run S. and ascending mountainous land covered with dense forest of pine timber. Elevation above sea level about 8200 ft. *continue measurement.*

~~40.00 Point of commencement of Survey.~~

43.45 30" Pine Tree on line.

48.00 Begin descent. Marshall Cañon.

77.00 Marshall Cañon Creek bears East. Ascend steep bank.

80.00 Set granite 10"x10"x18", 14" in the ground for corner to Tps. 11 and 12 S., Rs. 15 & 16 E., marked with six notches on the N.S.E. and W. edges from which-

A fir tree 12" in diam. bears N. 54° W., 0.39 Chs. distant upon which I scribe T.11 S.R.15 E. S. 36 B.T. ✓

A fir tree 12" in diam. bears N. 79° E., 0.26 Chs. distant, upon which I scribe T.11 S.R.16 E. S. 31 B.T. ✓

A fir tree 12" in diam. bears S. 47° 30' E., 0.18 chs. distant, upon which I scribe T.12 S.R. 16 E. S. 6 B.T. ✓

A fir tree 9" in diam bears S. 61° 30' W. 0.08 ch. distant, upon which I scribe T.12 S.R.15 E. S.1 B.T. ✓

Land extremely mountainous and covered with dense timber of pine and fir. Soil stony, 3rd rate. Undergrowth of oak scattered. Mountainous land 80. ch.

At 12 h. 00 m. m. l.m.t. I set off ~~8° 13' N~~<sup>8° 12' N</sup> on the decl. arc and determine the lat. with the solar at the corner of Twps. 11 and 12 S., Rs. 15 and 16 E. The resulting lat. is N. ~~32° 26'~~<sup>32° 27'</sup>.

Thence I run east on the S. boundary of Section 31. along the steep right bank of Marshall Cañon, through dense forest of pine fir and oak.

38.16 Set granite stone 10"x10"x12", 9" in the ground for 1/4 corner between secs. 31 and 6, marked on north face 1/4, from which:

## CHAINS

A fir tree 24" in diam. bears S. 23° W., 0.54 ch. dist. marked 1/4 S. 6 B.T.

A pine tree 20" in diam. bears N. 47 1/2° W., 0.36 ch. dist. marked 1/4 S. 31 B.T.

April 11, 1906.

-----  
April 12, 1906.

At 7 h. 30 m. a.m. l.m.t. I set off 8° 31' N. on the decl. arc, <sup>32° 27' N</sup> ~~32° 28' 1/2~~ N. on the lat. arc and determine a meridian with the solar at the 1/4 corner between Secs. 31 and 6. Thence

I run E. *continue measurement*  
*20 hrs. wide*

39.00 Sabino Cañon Creek bears S.E. Ascend over bluffs.

53.00 Begin descent.

56.00 Cañon S.W. ascend steep slope.

68.00 Ridge bears N. and S. Descend.

78.16 Set granite stone 6"x12"x14", 10" in the ground for a corner to Secs. 31, 32, 5 and 6; marked with 1 notch on the W. and 5 notches on the E. edges, from which:

A pine tree 20" in diam. bears N. 7° 30' W., 0.22 ch. dist. marked T.11 S.R.16 E. S.31 B.T.

An oak tree 10" in diam. bears N. 62° E., 0.21 ch. dist. marked T.11 S.R.16 E.S.32 B.T.

A pine Tree 14" in diam. bears S. 38° E., 0.04 ch. dist. marked T.12 S.R.16 E.S.5 B.T.

A pine tree 20" in diam. bears S. 48° W., 0.12 ch. dist. marked T.12 S.R.16 E.S. 6 B.T.

Land extremely mountainous with dense timber and scattered undergrowth of oak. Soil 3rd rate, stony. Mountainous land 78.16 ch.

April 12, 1906, at 12 h. 00 m. l.m.t. I set off 8° 34' N. on the decl arc and observe the sun on the meridian at the corner to Secs. 31,32, 5 and 6. The lat. reading is N. 32° 27'.

Thence I run N. 0° 3' W. on a random line between Secs. 31 and 32.

79.94 Corner to Secs. 29,30, 31 and 32, previously set by me is on line.

April 12, 1906.  
-----

CHAINS. April 13, 1906.

At 7 h. 30. m. l.m.t. I set off  $8^{\circ} 53'$  N. on the decl. arc,  ~~$32^{\circ} 27'$~~  <sup>$32^{\circ} 28' 7''$</sup>  N. on the lat. arc and determine a meridian with the solar at the corner of Secs. 29, 30, 31 and 32. Thence I run  $S. 0^{\circ} 3' E.$  on a true line between Secs. 31 and 32.

Ascend steep slope.

6.00 Spur bears E. Thence over extremely broken ground covered with boulders.

18.00 Descend.

32.00 Gulch bears N.E. Ascend.

~~40.00~~  
~~39.97~~

Set granite stone  $8" \times 10" \times 15"$ ,  $10"$  in the ground for  $1/4$  corner between Secs. 31 and 32, marked  $1/4$  on the west, from which:

A fir tree  $34"$  in diam. bears  $S. 57^{\circ} 30' W.$ ,  $0.24$  ch dist. marked  $1/4$  S. 31 B.T.

An oak tree  $12"$  in diam. bears  $S. 6^{\circ} 30' E.$ ,  $0.58$  ch. dist. marked  $1/4$  S. 32 B.T.

April 13, 1906 at 12 h. 00 m. noon, l.m.t. I set off  $8^{\circ} 56'$  N. on the decl. arc and observe the sun on the meridian. The resulting lat. reading is  ~~$32^{\circ} 27'$~~  <sup>$32^{\circ} 28' 7''$</sup>  N.

Thence I continue line  $S. 0^{\circ} 3' E.$  over steep ascent. about  $36^{\circ}$  slope.

50.00 Ascend bluffs.

53.00 Fir tree  $14"$  in diam. on line.

58.00 Ridge bears S.E. Descend.

66.91 Pine tree  $36"$  in diam. on line.

79.94 The corner to Secs. 31, 32, 5 and 6.

Land extremely mountainous, covered with timber of pine and fir of large diameter. Soil stony, 3rd rate. Mountainous land 79.94 chs.

April 13, 1906.

-----  
April 14, 1906.

At the  $1/4$  Corner between Secs. 25 and 30 previously established by me. 7 h. 30 m. A.M. l.m.t. I set off  $9^{\circ} 14'$  N. on the decl. arc,  ~~$32^{\circ} 27'$~~  <sup>$32^{\circ} 27' 7''$</sup>  N. on the lat. arc and determine a meridian with the solar. Thence I run N. over descending ground rapidly.

CHAINS

8.00 Line cannot be established further by reason of the extreme roughness of the ground. So I discontinue at this point.

Then I proceed to the corner to Secs. 19, 20, 29 and 30 previously established by me. April 14, 1906, at 12 h. 00 m. noon l.m.t. I set off <sup>9° 17 1/2' N</sup> ~~9° 18' N~~ on the decl. arc and observe the sun on the meridian. The resulting lat. reading is <sup>32° 29' N</sup> ~~52° 28' N~~.

From this corner I run west on the true line between Sections 19 and 30.

- 0.24 Pine Tree 10" in diam. on line.
- 5.00 Descend.
- 8.00 Gulch bears N. Ascend steep slope.
- 23.20 Pine tree 20" in diam. on line.
- 27.00 High ridge bears N. Descend.
- 36.90 Pine tree 26" in diam. on line.
- 39.50 Gulch bears N. Ascend.
- 40.00 Set a granite stone 10"x12"x18", 14" in the ground, for 1/4 corner between Secs. 19 and 30. Marked 1/4 on the N. face, from which:  
 A fir tree 36" in diam bears S. 49° W. 0.36 ch. dist. marked 1/4 S. 30 B.T.  
 A pine tree 36" in diam. bears N. 23° E., 0.47 ch. dist. marked 1/4 S. 19 B.T.
- Thence continue west. Ascend.
- 43.00 Begin steep descent.
- 56.00 Line descends abruptly into Cañada del Oro. Not surveyable beyond this point, therefore I discontinue line.  
 Land extremely mountainous. Soil 4th rate, rocky. Timber mixed pine and fir. *40.00 chs.*

April 14th, 1906.

-----  
*General Description*

All the lines embraced in these notes passed over extremely mountainous land and through a forest of heavy pine and fir timber. T.11 S.R.16 E. is impractical to subdivide further.

Signed,

*William B. Alexander*  
 U.S. Deputy Land Surveyor

April, 20th, 1906.



LIST OF NAMES.

A list of the names of the individuals employed by William B Alexander

....., United States Deputy Surveyor, to assist in running, measuring, and marking the lines and corners described in the foregoing field notes of the survey of S 1/2 of W boundary

and E boundary Sec 31, and E 1/2 N boundary Sec 30, T11S R16E of  
Sila and Salt River meridian, Arizona.  
showing the respective capacities in which they acted:

Devan Daily ..... Chainman.

William H. Putnam ..... Chainman.

Jesus Lopez ..... Moundman.

Carmen Munzica ..... Axman.

Henry Harmon ..... Flagman.

FINAL OATH OF ASSISTANTS.

We hereby certify that we assisted William B Alexander

....., United States Deputy Surveyor, in surveying all those parts or portions of the

S 1/2 of the west boundary, the South and East boundary of Section 31; and the east 1/2 of the north boundary Sec 30, T11S R16E of the Sila and Salt River meridian, Arizona....., which are represented

in the foregoing field notes as having been surveyed by him and under his direction; and that said survey has been in all respects, to the best of our knowledge and belief, well and faithfully surveyed, and the corner monuments established, according to the instructions furnished by the United States Surveyor

General for Arizona

Devan Daily ✓ Chainman.

William H. Putnam ✓, Chainman.

Jesus Lopez ✓, Moundman.

Carmen Munzica ✓, Axman.

Henry Harmon ✓, Flagman.

Subscribed and sworn to before me this 25<sup>th</sup>  
day of April, 1891906



Ralph W Langworthy  
Notary Public

387  
BOOK 1898

FINAL OATH OF UNITED STATES DEPUTY SURVEYOR.

I, William B Alexander, United States Deputy Surveyor, do solemnly swear that, in pursuance of a contract received from Frank S Ingalls United States Surveyor General for Arizona, bearing date of the 4 day of May 1895, I have well, faithfully, and truly, in my own proper person, and in strict conformity with the instructions furnished by the United States Surveyor General for Arizona, the Manual of Surveying Instructions, and the laws of the United States, surveyed all those parts or portions of the south half of the west boundary, the south, and the east boundary of sec 31; and the east 1/2 of the north boundary of section 30, T11S R16E of the Gila and Salt River meridian, in the Territory of Arizona, which are represented in the foregoing field notes as having been surveyed by me, and under my direction; and I do further solemnly swear that all the corners of said survey have been established and perpetuated in strict accordance with the Manual of Surveying Instructions, and the special written instructions of the United States Surveyor General for Arizona and in the specific manner described in the field notes, and that the foregoing are the original field notes of such survey; and should any fraud be detected, I will suffer the penalty of perjury under the provisions of an Act of Congress approved August 8, 1846.

William B Alexander  
United States Deputy Surveyor.

Subscribed by said William B Alexander, and sworn to before me }  
this 29 day of April 189 1906

Allan B. Jaynes,  
CLERK U. S. DISTRICT COURT FOR  
FIRST JUDICIAL DISTRICT, ARIZONA  
By Coraine M. Miller  
Deputy.



APPROVAL.

OFFICE OF THE UNITED STATES SURVEYOR GENERAL,

Phoenix A.T. July 2<sup>nd</sup> 1906, 189

The foregoing field notes of the survey of the south half of the west bdy, the south and the East bdrs of sec. 31 and the East 1/2 of the north bdy of sec. 30, T11S, R16E of the Gila and Salt River Base and Meridian Territory of Arizona,

executed by Wm B Alexander, U.S. deputy Surveyor under his contract No. 131, dated May 4, 1905, 189, having been critically examined, and the necessary corrections and explanations made, the said field notes, and the surveys they describe, are hereby approved.

Frank S Ingalls  
United States Surveyor General.

I certify that the foregoing transcript of the field notes of the above described surveys in \_\_\_\_\_ has been correctly copied from the original notes on file in this office.

United States Surveyor General

4-1906

7. Oct. 29th. 1906  
1906

# FIELD NOTES

BOOK 1898

OF THE SURVEY OF THE

Surveys and connections  
to

Returns under Contract No. 131  
Executed

Under Directions Received

From  
U. S. Surveyor General Arizona.  
Dated

July 3<sup>rd</sup> and August 3<sup>rd</sup>  
- 1906 -

Of the Gila and Salt River Meridian,  
Arizona.

AS SURVEYED BY

William D. Alexander, United States Deputy Surveyor,

Under his Contract No. 131, dated May 4, 1905

Survey commenced September 15, 1906

Survey completed September 18, 1906

409  
BOOK 1898  
NAMES AND DUTIES OF ASSISTANTS.

Juan Lopez	Chairman
Ran Walsh	"
Frank Howter	Assessor
Fred L. Payer	"

BOOK 1898

INDEX DIAGRAM.

Township // S, Range 16 E

6	5	4	3	2	1
7	8	9	10	11	12
18	17	16	15	14	13
19	20	21	22	23	24
30	29	28	27	26	25
31	32	33	34	35	36

Meanders Page

PRELIMINARY OATHS OF ASSISTANTS.

44/01  
BOOK 1898

WE, Juan Lopez and Dan Maleny  
do solemnly swear that we will well and faithfully execute the duties of chainmen; that we will level the chain upon even and uneven ground, and plumb the tally pins, either by sticking or dropping the same; that we will report the true distances to all notable objects, and the true lengths of all lines that we assist in measuring, to the best of our skill and ability, and in accordance with instructions given us, in the survey of

Corrections to returns under Contract 12131, under directions received from U.S. Surveyor General of Arizona dated July 31, & Aug. 3, 1906.  
Juan Lopez, Chainman.  
Dan Maleny, Chainman.

Subscribed and sworn to before me this 12<sup>th</sup> day of September, 1906

My Commission Expires August 13, 1910

W. B. Dargworthey  
Notary Public  
Pima County, Arizona

WE, \_\_\_\_\_ and \_\_\_\_\_  
do solemnly swear that we will well and truly perform the duties of moundmen in the establishment of corners; according to the instructions given us, to the best of our skill and ability, in the survey of

\_\_\_\_\_, Moundman.  
\_\_\_\_\_, Moundman.

Subscribed and sworn to before me this \_\_\_\_\_ day of \_\_\_\_\_, 190\_\_\_\_\_



WE, Frank Howell and Fred L. Boyer

do solemnly swear that we will well and truly perform the duties of axmen in the establishment of corners and other duties, according to instructions given us, to the best of our skill and ability, in the survey of

Corrections to returns under Contract 12101. Under directions received from U.S. Surveyor General of Arizona. Dated July 31, & Aug. 3, 1906.  
Frank Howell, Axman.  
Fred L. Boyer, Axman.

Subscribed and sworn to before me this 12<sup>th</sup> day of September, 1906

My Commission Expires August 13, 1910

W. B. Dargworthey  
Notary Public  
Pima County, Arizona

I, \_\_\_\_\_, do solemnly swear that I will well and truly perform the duties of flagman according to instructions given me, to the best of my skill and ability, in the survey of

\_\_\_\_\_, Flagman.

Subscribed and sworn to before me this \_\_\_\_\_ day of \_\_\_\_\_, 190\_\_\_\_\_



These surveys and corrections were executed under direction received from the United States Surveyor General of Arizona dated July 22 and August 2, 1903. Proceeding with a Young and Sons Light Mountain Transit, # 7522, the horizontal line having double verniers placed opposite each other and reading to single minutes of arc, which is also the least reading of the declination and latitude arcs.

September 21, 1904.

At the corner to sections 1, 2, 11, and 12, T 21 N, R 24 E, S. 1, and S. 2, and the Arizona, at 7.25 to the low water, I set off 244 1/2' N on the ~~line~~ arc and 20' 32' E on the lat. arc and determine a meridian with the other lines I run S 64° 5' over rolling, ascending bank

- 1.00 Top of granite stone over quartz setting mark
- 11.00 Road toward S. 2
- 12.00 Top of granite
- 14.75 High bank with ~~mark~~
- 16.75 The quarter corner between S. 1 and 2, previously

established by me, is on line. This measurement, ~~confirming~~ the measurement reported by the U. S. Surveyor of Public Lands, establishes the inaccuracy of the original measurement as reported in the original return. I therefore in obedience to instructions received from the U. S. Surveyor General dated July 22 and August 2, 1903 in which I am ordered to set the quarter corner between sections 1 and 2, T 21 N, R 24 E of the Gila and Salt River Meridian, Arizona, 2 64° 5', about 2000 yards from the corner to sections 2, 3, 11, 12 of said township and range, proceed to survey the previously established corner placed at 16.75 and at

20.00 Set a granite stone, 20" x 24" x 24" x 20" in the ground

These five and six hundred and six hundred and

to be used in the same way as the other

and the other two hundred and six hundred and

and the other two hundred and six hundred and

and the other two hundred and six hundred and

and the other two hundred and six hundred and

and

September 19, 1951

and the other two hundred and six hundred and

and the other two hundred and six hundred and

and the other two hundred and six hundred and

and the other two hundred and six hundred and

and the other two hundred and six hundred and

and the other two hundred and six hundred and

and the other two hundred and six hundred and

and the other two hundred and six hundred and

and the other two hundred and six hundred and

and the other two hundred and six hundred and

and the other two hundred and six hundred and

and the other two hundred and six hundred and

and the other two hundred and six hundred and

and the other two hundred and six hundred and

and the other two hundred and six hundred and

and the other two hundred and six hundred and

and the other two hundred and six hundred and

and the other two hundred and six hundred and

and the other two hundred and six hundred and

and the other two hundred and six hundred and

and the other two hundred and six hundred and

and the other two hundred and six hundred and

and the other two hundred and six hundred and



Notes

For the quarter section corner between sections 1 and 2,  
marked 1/4 on the west line, find station

At the west end of the line between 1 and 2, at the  
station, marked 1/4 S E 1/4 1.

At the west end of the line between 1 and 2, at the  
line marked 1/4 S E 1/4 1.

From 1 corner 1 1/4 S, through

44.00 South base to E. corner over roughly rolling ground

44.00 Top of rough base over gently rolling land

44.25 Road base 1/4 S.

44.50 Right side corner into corner

44.50 Corner with line of the side, base to E. E. corner and  
base corner

44.50 E. E. corner between sections 1 and 2 on the ground corner  
marked 1/4, previously established by us, on a line.

--- --- ---

I was pleased to return to sections 21, 22, 23, and  
24, and run out on a true line between sections 21  
and 22 in order to determine the true bearing and distance  
between the corner to sections 21, 22, 23, and 24, and  
the corner to sections 21, 22, 23 and 24.

At station 1/4 corner line S E 1/4 1.

At the <sup>Point</sup> 1/4 corner corner base 1/4 S E 1/4 1.

Therefore I again proposed to the corner of sections 21  
22, 23, and 24 and run S 1/4 S E 1/4 1 on a true line  
between sections 21 and 22.

44.25 Road with 1/4 S E 1/4 1

44.50 Road with, base to E. E. corner

44.50 Spur base to E. corner

44.50 Road with base to E. corner

44.50 Spur base to E. corner

44.50 Road with 1/4 line side base N. E. corner over rolling

<p>1. The first section of the report...</p> <p>2. The second section of the report...</p> <p>3. The third section of the report...</p> <p>4. The fourth section of the report...</p> <p>5. The fifth section of the report...</p> <p>6. The sixth section of the report...</p> <p>7. The seventh section of the report...</p> <p>8. The eighth section of the report...</p> <p>9. The ninth section of the report...</p> <p>10. The tenth section of the report...</p> <p>11. The eleventh section of the report...</p> <p>12. The twelfth section of the report...</p> <p>13. The thirteenth section of the report...</p> <p>14. The fourteenth section of the report...</p> <p>15. The fifteenth section of the report...</p> <p>16. The sixteenth section of the report...</p> <p>17. The seventeenth section of the report...</p> <p>18. The eighteenth section of the report...</p> <p>19. The nineteenth section of the report...</p> <p>20. The twentieth section of the report...</p>	<p>01.00</p> <p>02.00</p> <p>03.00</p> <p>04.00</p> <p>05.00</p> <p>06.00</p> <p>07.00</p> <p>08.00</p> <p>09.00</p> <p>10.00</p> <p>11.00</p> <p>12.00</p> <p>13.00</p> <p>14.00</p> <p>15.00</p> <p>16.00</p> <p>17.00</p> <p>18.00</p> <p>19.00</p> <p>20.00</p>
--	---

- 20.00
- 21.00
- 22.00
- 23.00
- 24.00
- 25.00

... as the result for the 1/4 ...  
 ... in a ...  
 ... by ...  
 ... the ...  
 ... of ...

- 26.00
- 27.00
- 28.00

... of ...

- 29.20
- 30.75
- 31.00
- 32.00
- 33.00
- 34.00
- 35.00
- 36.00
- 37.00
- 38.00
- 39.00
- 40.00
- 41.00
- 42.00
- 43.00
- 44.00
- 45.00
- 46.00
- 47.00
- 48.00
- 49.00
- 50.00

... *Course DE* ...

51.50 ...



22.75

These survey points established by me in 1894  
A portable compass exhibiting 10° in the ground for  
the survey of sections 21, 22, 23, 24, marked with  
a number on the east end & marked on the north edge  
and 7° on the south face. A series of courses I set  
I set the high end of the line approximately

and roughly parallel, with the north

very little higher and the little touch of magnetic  
and etc.

Approximate (and 22.75) course

September 21, 1894.

September 21, 1894.

I started to the quarter corner 1/4 Sec 21, and  
to and with the following bearing course

to and with 10° in quarter corner 1/4 Sec 21, 22  
course, bearing 10° 00' 00" N 20° 00' 00" E

to and with 10° in quarter corner 1/4 Sec 21, 22  
course, bearing 10° 00' 00" N 20° 00' 00" E

approximately 2000

I then started to corner to sections 21, 22, 23,  
and 24 and with the following bearing course

to and with 10° in quarter corner 1/4 Sec 21, 22  
course, bearing 10° 00' 00" N 20° 00' 00" E

to and with 10° in quarter corner 1/4 Sec 21, 22  
course, bearing 10° 00' 00" N 20° 00' 00" E

to and with 10° in quarter corner 1/4 Sec 21, 22  
course, bearing 10° 00' 00" N 20° 00' 00" E

to and with 10° in quarter corner 1/4 Sec 21, 22  
course, bearing 10° 00' 00" N 20° 00' 00" E

September 21, 1894.

With the assistance of instrument and course I then  
all the lines of this survey (except 200) in accordance  
with the instructions in the Manual, page 42.

Respectfully submitted William B. Alexander  
September 21, 1894.  
U. S. Dept. Land Surv.

THE BOARD OF INVESTIGATION INTO THE  
 ACTS OF THE PRESIDENT OF THE UNITED STATES  
 IN CONNECTION WITH THE VIETNAM WAR  
 HAS CONCLUDED THAT THE PRESIDENT  
 WAS NOT RESPONSIBLE FOR THE  
 VIOLATION OF THE WAR POWERS  
 ACT BY THE PRESIDENT OF THE  
 UNITED STATES IN 1972.

THE BOARD OF INVESTIGATION INTO THE  
 ACTS OF THE PRESIDENT OF THE UNITED STATES  
 IN CONNECTION WITH THE VIETNAM WAR  
 HAS CONCLUDED THAT THE PRESIDENT  
 WAS NOT RESPONSIBLE FOR THE  
 VIOLATION OF THE WAR POWERS  
 ACT BY THE PRESIDENT OF THE  
 UNITED STATES IN 1972.

THE BOARD OF INVESTIGATION INTO THE  
 ACTS OF THE PRESIDENT OF THE UNITED STATES  
 IN CONNECTION WITH THE VIETNAM WAR  
 HAS CONCLUDED THAT THE PRESIDENT  
 WAS NOT RESPONSIBLE FOR THE  
 VIOLATION OF THE WAR POWERS  
 ACT BY THE PRESIDENT OF THE  
 UNITED STATES IN 1972.

THE BOARD OF INVESTIGATION INTO THE  
 ACTS OF THE PRESIDENT OF THE UNITED STATES  
 IN CONNECTION WITH THE VIETNAM WAR  
 HAS CONCLUDED THAT THE PRESIDENT  
 WAS NOT RESPONSIBLE FOR THE  
 VIOLATION OF THE WAR POWERS  
 ACT BY THE PRESIDENT OF THE  
 UNITED STATES IN 1972.

THE BOARD OF INVESTIGATION INTO THE  
 ACTS OF THE PRESIDENT OF THE UNITED STATES  
 IN CONNECTION WITH THE VIETNAM WAR  
 HAS CONCLUDED THAT THE PRESIDENT  
 WAS NOT RESPONSIBLE FOR THE  
 VIOLATION OF THE WAR POWERS  
 ACT BY THE PRESIDENT OF THE  
 UNITED STATES IN 1972.

THE BOARD OF INVESTIGATION INTO THE  
 ACTS OF THE PRESIDENT OF THE UNITED STATES  
 IN CONNECTION WITH THE VIETNAM WAR  
 HAS CONCLUDED THAT THE PRESIDENT  
 WAS NOT RESPONSIBLE FOR THE  
 VIOLATION OF THE WAR POWERS  
 ACT BY THE PRESIDENT OF THE  
 UNITED STATES IN 1972.

THE BOARD OF INVESTIGATION INTO THE  
 ACTS OF THE PRESIDENT OF THE UNITED STATES  
 IN CONNECTION WITH THE VIETNAM WAR  
 HAS CONCLUDED THAT THE PRESIDENT  
 WAS NOT RESPONSIBLE FOR THE  
 VIOLATION OF THE WAR POWERS  
 ACT BY THE PRESIDENT OF THE  
 UNITED STATES IN 1972.

THE BOARD OF INVESTIGATION INTO THE  
 ACTS OF THE PRESIDENT OF THE UNITED STATES  
 IN CONNECTION WITH THE VIETNAM WAR  
 HAS CONCLUDED THAT THE PRESIDENT  
 WAS NOT RESPONSIBLE FOR THE  
 VIOLATION OF THE WAR POWERS  
 ACT BY THE PRESIDENT OF THE  
 UNITED STATES IN 1972.

LIST OF NAMES.

A list of the names of the individuals employed by William D Alexander

, United States Deputy Surveyor, to assist in running, measuring, and

marking the lines and corners described in the foregoing field notes of the survey of Corrections

to returns under Contract 181. Under directions received from U.S. Surveyor General of Arizona dated July 31 and Aug 13, 1906, showing the respective capacities in which they acted:

Juan Lopez Chainman.  
Ran Maloney Chainman.  
Moundman.  
Moundman.

Frank Howell Axman.  
Fred L. Boyer Axman.  
Flagman.

FINAL OATH OF ASSISTANTS.

We hereby certify that we assisted William D Alexander

, United States Deputy Surveyor, in surveying all

those parts or portions of the

Corrections to the returns under Contract  
Nº 181 dated May 4 1905, under directions from U.S. Surveyor General of Arizona, dated July 31 & Aug 3 1906 in T & N P I C E  
Gila and Salt River Meridian, of Arizona, which are represented

in the foregoing field notes as having been surveyed by him and under his direction; and that said survey has been in all respects, to the best of our knowledge and belief, well and faithfully surveyed, and the corner monuments established, according to the instructions furnished by the United States Surveyor

General for Arizona

Juan Lopez Chainman. ✓

Ran Maloney Chainman. ✓

Fred L. Boyer Axman.  
~~Moundman.~~

Moundman.

Frank Howell Axman. ✓

Axman.

Flagman.

Subscribed and sworn to before me this 24<sup>th</sup>

day of September, 1906



My Commission expires August 13, 1910

W. Langworthy  
Notary Public  
Pima County Arizona

FINAL OATH OF UNITED STATES DEPUTY SURVEYOR.

487  
BOOK 1898

I, William B. Alexander United States Deputy Surveyor, do solemnly swear that, in pursuance of a contract received from Frank S. Ingalls United States Surveyor General for Arizona, bearing date of the 4 day of May, 1905, I have well, faithfully, and truly, in my own proper person, and in strict conformity with the instructions furnished by the United States Surveyor General for Arizona, the Manual of Surveying Instructions, and the laws of the United States, surveyed all those parts or portions of

Corrections to returns under Contract No. 131 Dated May 4 1905 under direction from the U.S. Surveyor General of Arizona dated July 31 and Aug. 3 1906 (see T.T.S.P. 160E) of the Gila and Salt River meridian, in the Territory of Arizona, which are represented in the foregoing field notes as having been surveyed by me, and under my direction; and I do further solemnly swear that all the corners of said survey have been established and perpetuated in strict accordance with the Manual of Surveying Instructions, and the special written instructions of the United States Surveyor General for Arizona and in the specific manner described in the field notes, and that the foregoing are the original field notes of such survey.

William B. Alexander  
United States Deputy Surveyor.

Subscribed by said William B. Alexander and sworn to before me }  
this 21<sup>st</sup> day of September, 1906



Allan B. Jaynes  
CLERK U. S. DISTRICT COURT FOR  
FIRST JUDICIAL DISTRICT, ARIZONA.

APPROVAL.

OFFICE OF THE UNITED STATES SURVEYOR GENERAL,

Phoenix AZ Dec. 18, 1906

The foregoing field notes of the survey of corrections to returns under Cont. # 131, as required by office letters of July 31 and Aug. 3, 1906.

executed by Wm B. Alexander U.S. deputy surveyor under his contract No. 131, dated May 4, 1905, having been critically examined, and the necessary corrections and explanations made, the said field notes, and the surveys they describe, are hereby approved.

Frank S. Ingalls  
United States Surveyor General.

I certify that the foregoing transcript of the field notes of the above-described surveys in \_\_\_\_\_, has been correctly copied from the original notes on file in this office.

\_\_\_\_\_  
United States Surveyor General.