

Note Supplemental attached hereto.

1908

FIELD NOTES

OF THE SURVEY OF THE

Subdivision

of

Township No 17 North, Range 7 West

and

Retracement

of the

Fractional South and East Boundaries

of

Baca Float No 5.

1908

of the Gila and Salt River Base and Meridian,

Territory of Arizona.

AS SURVEYED BY

Arthur B. Mader

, United States Deputy Surveyor,

Under his Contract No. 132, dated May, 26th 1905, ~~188~~

Survey commenced September 26th 1905, ~~188~~

Survey completed October 9th 1905, ~~188~~

1908

2/79

BOOK 1908

NAMES AND DUTIES OF ASSISTANTS.

B. F. Ainsworth	Chairman
C. P. Boland	Chairman
Shirley Wetmore	Moundman
Shirley Wetmore	Axeman
H. W. Walker	Flagman

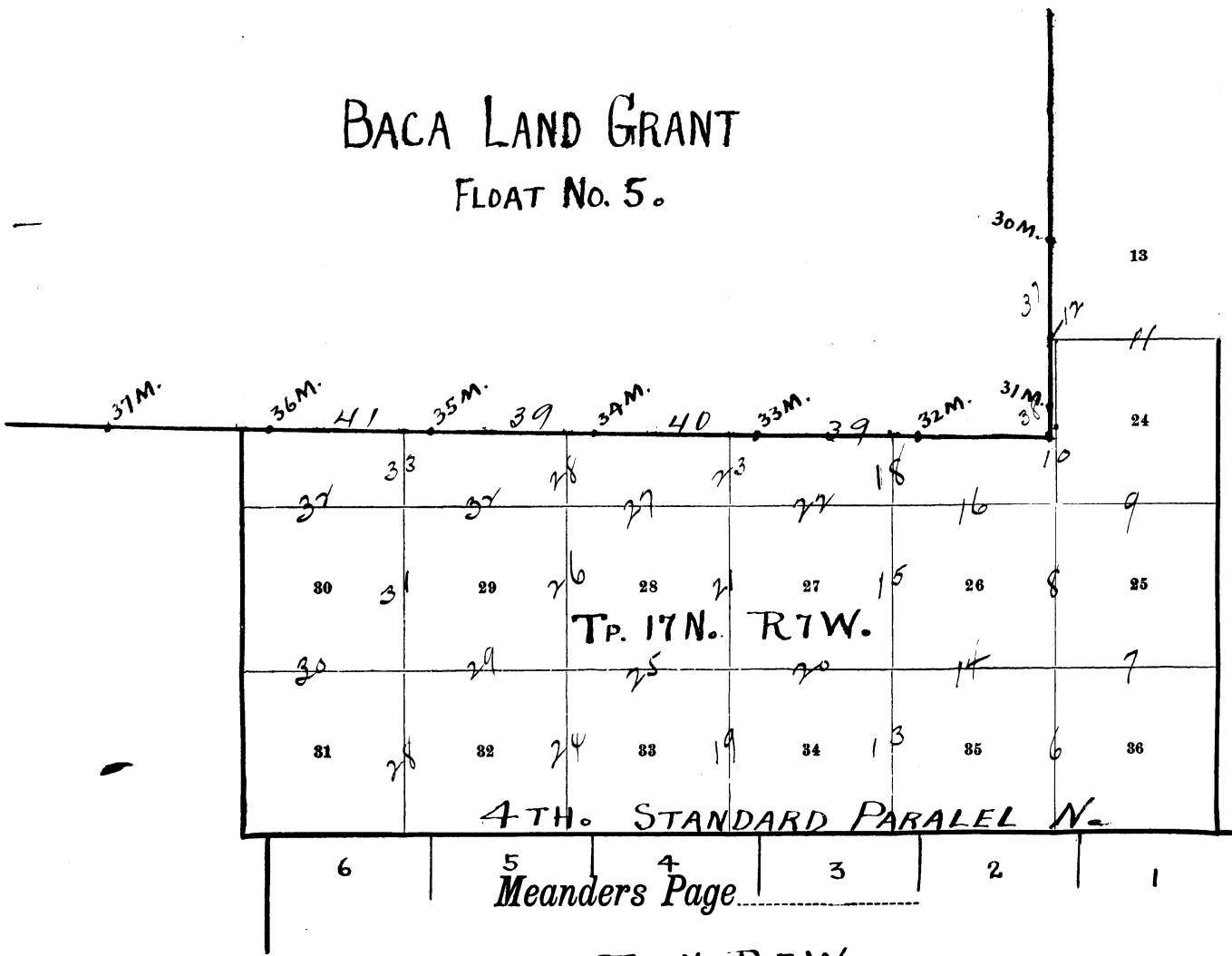
BOOK 1908

INDEX DIAGRAM.

Township 17 N, Range 7 W

1

BACA LAND GRANT
FLOAT No. 5.



T16N, R7W.

FOR PRELIMINARY OATHS OF ASSISTANTS.

See Subdivision of T^p. 16 N, R^g. 7 W.

WE, _____ and _____
do solemnly swear that we will well and faithfully execute the duties of chainmen; that we will level the chain over even and uneven ground, and plumb the tally pins, either by sticking or dropping the same; that we will report the true distances to all notable objects, and the true lengths of all lines that we assist in measuring, to the best of our skill and ability, and in accordance with instructions given us, in the survey of _____

_____, Chainman.
_____, Chainman.

Subscribed and sworn to before me this _____ }
day of _____, 189 _____ }



WE, _____ and _____
do solemnly swear that we will well and truly perform the duties of moundmen in the establishment of corners, according to the instructions given us, to the best of our skill and ability, in the survey of _____

_____, Moundman.
_____, Moundman.

Subscribed and sworn to before me this _____ }
day of _____, 189 _____ }



WE, _____ and _____
do solemnly swear that we will well and truly perform the duties of axmen in the establishment of corners and other duties, according to instructions given us, to the best of our skill and ability, in the survey of _____

_____, Axman.
_____, Axman.

Subscribed and sworn to before me this _____ }
day of _____, 189 _____ }



I, _____, do solemnly swear that I will well and truly perform the duties of flagman according to instructions given me, to the best of my skill and ability, in the survey of _____

_____, Flagman.

Subscribed and sworn to before me this _____ }
day of _____, 189 _____ }



SUBDIVISION OF TP. 17 N., R. 7 W., T. 117 N. 7 W.

Chains. Note. The preliminary and final oaths of assistants on the survey of the subdivisions of Tp. 17 N. R. 7 W., are found at the beginning and end respectively of the notes of the subdivision of Tp. 16 N. R. 7 W. of this contract.

Survey commenced Sept. 26, 1905, and executed with a Gurley Light Mt. Transit, not numbered, with solar attachment. The horizontal limb is provided with two double verniers placed opposite to each other and reading to $30''$ of arc. The least count of the verniers of the lat. and decl. arcs is one minute of arc. I examine the adjustments of the transit and find them correct. Then to test the solar apparatus by comparing its indications resulting from solar operations made during A. M. and P. M. hours with a meridian determined by observations on Polaris, I proceed as follows:

At the Stan. Cor. of Sec's 35-36 of Tp. 17 N. R. 7 W. on the 4th Stan. parallel, previously established by me Aug. 17, 1905, in Lat. $34^{\circ} 49' 10''$ N. and Long. $112^{\circ} 56' W.$ I set off $34^{\circ} 49' N.$ on the Lat. arc and $1^{\circ} 14-1/2' S.$ on the Decl. arc at 4h. 00 m. p. m. I determine with the solar a meridian and mark a point thereof on a stake driven in the ground 5 chns. N. of the cor.

At 7h. 30m. P. M. by my watch which is correct for 1. m. t., I observe Polaris at eastern elongation in accordance with the manual of Instructions and mark a point in the line thus determined on a peg driven in the ground 5 chns. N. of my station. Sept. 26, '05.

Sept. 27. At 7h. 30m. A. M., I lay off the azimuth of Polaris $1^{\circ} 27-1/2'$ to the W. and mark the meridian thus determined by a tack in the stake set from the solar observation of Sept. 26, on which the meridian falls 0.45 ins. E. of the mark determined by the solar.

SUBDIVISION OF TP. 17 R. 7 W.

chains/ At 8 h. 00 m. A. M. 1. m. t. I set off $34^{\circ} 49'$ N. on the Lat. arc and $1^{\circ} 30'$ S. on the Decl. arc and mark a point in the meridian thus determined by a tack in the stake previously set, this mark falls 0.40 ins. E. of the meridian established by the Polaris observation. The solar apparatus by P. M. and A. M. observations defines positions for meridians respectively about $0^{\circ} 24'$ and $0^{\circ} 20'$ E. of the meridian established by the Polaris observation. Therefore, I conclude that the adjustments of the instrument are satisfactory.

I commence at the Stan. Cor. of Sec's 35 and 36 on the 4th Stand. parallel. North.

Thence I run,

N. $0^{\circ} 1'$ W. bet. sec's 35 and 36.

Ascend granite rocks through pine timber

4.00 Cross wire fence, brs. S. 85° W and N. 85° E.

24.00 Top of rough granite
over broken and rugged granite.

27.00 Cross old rail fence down in places, brs. N. 80° W. and S. 80° E. and E.

Descant over broken granite and ridges.

40.00 Set a granite stone 16 x 8 x 6 ins. 11 inx. in the ground for $1/4$ sec. cor. marked $1/4$ on W/ face.
A pine 24 ins. diam. brs. N. $17^{\circ} 34'$ W., 35 lks. dist.
Marked $1/4$ S. 35 B. T.
A pine 16 ins diam. brs. $81^{\circ} 42'$ E. 27 lks. dist.
marked $1/4$ S. 36B. T.

Continue over broken granites with level patches and through pine timber

73.00 Clarence Denny's ranch house 30 x 45ft., lonside E. and W. bears W. 12 chns. with a barn and blacksmith shop N.W. of house and several out-houses around the house.

75.39 Cross Denny's rail fence, brs. S. 81° W. and N. 86° E. 700 ft. then about S. 57° E.

SUBDIVISION OF TP. 17 N. R. 7 W.

Chains.

76.35 Cross wagon road, hrs. along the fence. ascent gradually.

80.00 Set a malpais stone 14 x 9 x 6 ins. 10 ins. in the ground for the cor. of sec's 25, 26, 35, and 36, marked with one groove on the S. and 1 groove on the E. edges.
 A pine 16 ins. diam. hrs. N. 34° 45' E. 1.22 chns. dist. marked T. 17 N. R. 7 W. S. 23 B. T.
 A pine 28 ins. diam. hrs. N. 24° 38' W. 1.76 chns. dist. marked T. 17 N. R. 7 W. S. 26 B. T.
 A juniper 28 ins. diam hrs. S. 2° 24' W. 77 lks. dist. marked T. 17 N. R. 7 W. S. 35 B. T.
 A oak 12 ins. diam. hrs. S. 20° 3' E. 1.75 chns. dist. marked T. 17 N. R. 7 W. S. 36 B. T.
 Land mountainous.
 Soil stoney 4th rate with patches of loam 2nd rate.
 Timber juniper and Pine
 Mountainous land 80.00 chns.

East, on a random line between sec's 25 and 36.

40.00 Set a temp. 1/4 sec. cor.

79.94 Intersect the E. Boundary of Tp. 7 lks. S. of the cor. of sec's 25, 30, 31 and 36.
 The nce. l rdn S. 89° 57' W. on a true line between sec's 25 and 36.
 descent over stoney mountain slope.

10.00 Enter pine timber.

^{25.40} 28.40 Cross gulch 15 lks. wide course S. 15° W. hrs. N. 15° E. ascent.

39.98 Set a granite stone 17 x 9 x 6 ins. 12 ins. in the ground for a 1/4 sec. cor. marked 1/4 on the W. face.
 An oak 10 ins. diam. hrs. S. 25° 13' E. 83 lks. dist. marked 1/4 S. 36 B. T.
 An oak 8 ins. in diam. hrs. N. 0° 14' W. 56 lks. dist. marked 1/4 S. 25 B. T.

50.00 Top and start to descent over rolling land.

8 SUBDIVISION OF TP. 17N. R. 7W. S. 4. 17110

chains.

79.96 The cor. of sec's. 25, 26, 35, and 36.

Land mountainous.

Soil stony, 8th rate.

Timber pine.

Mountainous land 79.96 chns.

Sept. 27, '05. At 12M. 0' 1. m. to 1 set off 1° 35' S/ of the decl. arc and observe the sun on the meridian at the cor. of sec's. 25, 26, 35 and 36. The resulting latitude is 34° 50' which is the proper lat.

N. 0° 1' W. bet. sec's. 25 and 26.

descent through heavy pine timber.

8.90 Cross gulch 15 lks. wide. course N. W. brs. E. ascent over point.

24.50 Cross gulch 10 lks. wide. course W. brs. E.

31.50 Cross gulch 10 lks. wide, course S. W. brs. E. ascent slope and leave heavy pine timber.

40.00 Set a malpais stone 17 x 8 x 6 ins. 12 ins. in the ground for 1/4 sec. cor. marked 1/4 on W. face.

A juniper 40 ins. in diam. brs. N/ 80° 20' E. 67 lks.

dist. marked 1/4 S. 25 B. 7.

A burnt pine 20 ins. diam. brs. N. 85° 38' W.

1.62 chns. dist. marked 1/4 S. 25 B. 7.

Ascend

48.00 Top and descend

58.20 Cross wash 10 lks. wide. course N. 65° W. brs. S. E.

58.80 Cross Chas Conger's rail fence, brs. N. 67° W. 300 ft. then N. 33° 30' W. and S. 70 E. 350 ft. then about N.

60 E. ascend.

72.00 Top and descend.

80.00 Set a malpais stone 18 x 12 x 6 ins. 12 ins. in the ground for the cor. of sec's. 23, 24, 25 and 26, marked with one groove on E. and two grooves on the S. edge

SUBDIVISION OF T. 17 N. R. 7 W.

chains.

and raised a mound of stone 2 ft. base, 1-1/2 ft. high

N. of cor.

A pine 18 ins. in diam. brs. N. 37° 22' E. 1.33 chns.

dist. marked T. 17 N. R. 7. W. S. 24. B. T.

A pine 15 ins. in diam. brs. S. 61° 30' W. 2.00 chns.

dist., marked T. 17 N. R. 7. W. S. 26 B. T.

No other brs. available? Pits impracticable.

Land mountainous.

Soil rocky. 4th rate.

Timber pine.

Mountainous of heavily timber. Land 80.00 chns

September 27, 1905.

Sept. 28. '05. At 7 h. 30 m. a. M. in m. t. 1 set off
34° 51' N. on the lat. arc. and 1° 53' S. on the decl.
arc. and determine a meridian by the solar at the cor.
of sec's . 23, 24, 25, and 26.

Thence I run.

N. 89° 57' E. on a random line bet. sec's 24 and 25.

40.00 Set a temporary 1/4 sec. cor.

79.96 Intersect the E. boundary pt. Tp. 11 lks. S. of the
cor. of sec. 19, 24, 25, and 30. Thence I run

S. 89° 52' W. on a true line bet. sec. 24 and 25.

descent through heavy oak and pine undergrowth.

4.45. Cross gulch 20 lks. wide, course N. 70° E. brs. S.
70° E.

Over rolling land.

24.00 Cross gulch 10 lks. wide, course N. 25° W. brs. S.
25° E.

Leave dense undergrowth and ascent steep slope through
pine timber.

29.00 Ascent more gradually.

33.00 Top and descend. Pine timber becomes heavy.

chains.

39.98 Set a malpais stone 17 x 12 x 4 ins., 12 ins. in the ground for 1/4 sec. cor., marked 1/4 on N. face.
 A pine 12 ins. in diam. brs. N. 15° 35' E., 132 chns. dist. marked 1/4 S. 25 E. T. A.
 A pine 12 ins. in diam. brs. S. 38° 3' E., 78 lks. dist marked 1/4 S. 25 E. T. A.
 53.60 Cross rail fence brs. S. 20° 30' W. and N. 20° 30' E. Leave pine timber and descend.
 70.80 Cross gulch 10 lks. wide, course N. 80° W. brs. S/80° E.
 79.96 The cor. of sects. 23, 24, 25, and 26.
 Land mountainous.
 Soil stony 4th rate., 3rd rate inside of fence.
 Timber pine.
 Undergrowth oak brush and small pine.
 Mountainous or heavily timbered land and land covered with dense underbrush 79.96 chns.

N. 0° 14' W. bet. secs. 23 and 24.
 Over rolling stony ground.
 13:00 E. post of gate of pasture.
 14.35 The S. W. cor. of a log barn, at Olato Conger ranch 30 x 40 ft., long side brs. S. E. W. 100 ft. A. well brs. about 100 ft. W. from barn.
 15.50 Cross pine creek 45 lks. wide, course W. 200 ft. then S. W. brs. N. 80° E. and N. E.
 18.46 Cross wagon road, brs. N. 25° E. and S. 25° W. and ascend.
 34.63 The S. E. cor. of the Baca Land Grant, Flot. No. 5 which is a malpais stone 20 x 6 x 12 ins. out of the ground surrounded by a mon. of stones marked and witnessed as called for by the Surveyor General at hwy. Ave W. 1.47 chns. descend over malpais stones.

See P. 1 Supplemental notes

SUBDIVISION OF TP. 17 N. R. 7 W. DIVISION 2

chains.

40.00 Set a malpais stone 15 x 10 x 6 ins., 10 ins. in the ground for 1/4 sec. cor; marked 1/4 on N. face. (C.C.)
 A juniper 12 ins. in diam. brs. S. 36° 15' E.; 47 lks. dist., marked 1/4 S. 24, B. T.
 An oak 5 ins. in diam. brs. S. 87° 10' W.; 77 lks. dist. marked 1/4 S. 25 B. T.
 Over rolling land through pine timber.
 47.00 Cross gulch 25 lks. wide; course S. 30° E. Str. N. W. ascend rocky slope through brush.
 60.00 Same gulch 150 ft. W. -- leave pine timber and ascend steep, rocky, brushy mountain slope. (C.C.)
 80.00 Point falls on a malpais stone near top of mt. 10 x 8 x 2 ins. out of the ground, marked a cross (x) at the exact point for the cor. of sec's 13, 14, 23, and 24. and cut 3 grooves to S. and 1 groove to E. of cross. and raised a mound of stones 2 ft. base, 1-1/2 ft. high, W. of cor.
 A juniper 9 ins. in diam. brs. S. 39° 24' E.; 1.25 chns dist., marked T. 17 N. R. 7 W. S. 24 B. T.
 A juniper 7 ins. in diam. brs. N. 4° 17' W.; 67 lks. dist., marked T. 17 N. R. 7 W. S. 14 B. T.
 No other bearings available. Pits impracticable.
 Land mountainous.
 Soil stony, 4th rate.
 Timber pine and juniper.
 Undergrowth oak.
 Mountainous land 80:00 chns.

40.00 N. 89° 52' E. on a random line bet. sec's 13 and 24. Set a temp. 1/4 sec. cor.
 79.92 intersect E. bdy. of Tp. 11 lks. N. of cor. of sec. 18, 19, 13 and 24. Thence I run S. 89° 57' W. of a true line bet. sec's 13 and 24. descend steep W. slope of Mt.

see P 8 supplemental notes

chains.

- rough and through heavy brush.
- 10.00 Foot of slope cross gulch 10 lks. wide., course N. 15° W., brs. S. 15° E.
over rolling land-through oak growth.
- 39.96 Set a granite stone 15 x 7 x 6 ins., 10 ins. in the ground for 1/4 sec. cor/ marked 1/4 on N. face.
An oak 10 ins. in diam., brs. S. 32° 11' E. 88 lks. dist., marked 1/4 S. 24 B. T.
A pine 9 ins. in diam. brs. N. 7° 40' E. 24 lks. dist., marked 1/4 S. 13 B. T.
- 49.00 Cross road brs. N. 26° 20' E. to walnut ^{Creek} ~~tree~~, and S. 22-40° W.
- 52.50 Cross pine creek 40 lks. wide course S. 20° W. brs. N. 25° 20' E.
Ascend steep rocky slope through brush and scattered oaks and junipers.
- 76.00 Ascend more gradually.
- 79.14 Cross wire fence. ^{Enclosing the} ~~E. bdy~~ of Baca Grant, brs. N. and S
- 79.92 The cor. of sec's 13, 14, 23, and 24.
Land mountainous.
Soil stony, 4th. rate.
Timber pine, oak and juniper.
Undergrowth oak.
Mountainous and heavily timbered land or land-covered with dense undergrowth, 79.92 chns.
- 1.47 S. 89° 57' W. bet. sec's 14 and 23.
Set a temp. point for intersection of E. bdy. of Baca Grant.
Thence S. on a random line.
- 34.12 14 lks. E. to 31 mile cor. of the Baca Land Grant
a malpais stone firmly set in the ground marked 31 M.
on S. side surrounded by a mon. of stone 1-1/2 ft. base, 1/2 ft. high and witnessed by pine trees called for by the Surveyor General.

chains.

1 chisel B. L. V. on S. side of stone the other faces being too rough.

From temp. intersection point, as above.

I run N. on a random line,

45.50 chns. to 30-mile cor. of the Baca Land Grant a malpais stone, firmly set, but not marked, and is witness as called for by the Surveyor General.

1 chisel 30 M. B. L. V. on W. face, and re-build stone mon. around the cor. 1-1/2 ft. base, 1-1/2 ft. high.

According to these findings, the bearing of the bdy. of the Grant from the 30 mile cor. to the 31 mile cor. is S. 0° 39' W.

Thence from temp. intersection point I run due E. on a true line.

0.537 Intersect E. bdy. of Baca Land Grant.

Set a malpais stone 28 x 9 x 6 x ins. 2 1/2 ins. in the ground for C. C. of sec's 14 and 23, marked C. C. on the E. and B. L. V. on W. faces and cut 3 notches on S. and 1 notch on E. faces, and raised a mon. of stone 2 ft. base 1-1/2 ft. high, E. of Cor. No other bearings available. Pits impracticable.

1.47 To sec. cor. 13, 14, 23, and 24.

Land mountainous.

Soil stony. 4th rate.

Timber pine and juniper.

Mountainous land 1.47 chns. connecting line 34.12 chns.

Sept. 29. '05. at 7 h. 30m. A. M. 1 m. t., I set off 34° 49' N. on the lat. arc. and 2° 16' S. on the decl. arc. and determine a meridian with the solar at the cor. sec. 34 and 35, on the S. bdy. of the Tp., thence I run N. 0° 01' W. bet. sec's 34 and 35. ascend malpais slope gradually.

chains.

10:50 Cross gulch 10 lks wide, course S. 15° E. brs. N. 45° W.
ascend more rapidly

30.00 Top and descend gradually.

40:00 Set a malpais stone in bottom of swale, course W. brs. N. 80° E., stone is 18 x 12 x 4 ins. 13 ins. in the ground, for a 1/4 sec. cor. marked 1/4 on W. face and raised a mound of stone 2 ft. base 1-1/2 ft. high W. of cor.

An oak tree 7 ins. in diam., brs. S. 14° 47' E., 57.50 lks. dist marked 1/4 E. 45 St. T.

No other bearing available. Pits impracticable.
ascend over malpais boulders, ~~brs. 80°~~

80.00 Set a malpais stone 20 x 14 x 7 ins., 15 ins. in the ground for cor. of sec. 26, 27, 34, and 35. marked with one groove on S. and 2 grooves on E. edges, and raised a mound of stones two ft. base, 1-1/2 ft. high W. of cor.

No trees available. Pits impracticable.
Land mountainous.
Soil stony. 4th rate.
Timber juniper.
Mountainous land 80.00 chas.

E. on a random line bet. sec's 26 and 35.

40.00 Set a tem. 1/4 sec. cor.

79.98 Intersect a W. and E. line 5 lks. E. of the cor. of sec 25, 26, 35, and 36. Thence I run S. 89° 58' W. on a true line bet. sec. 26 and 35. descend gradually through pine timber.

15.00 Cross wagon road brs. N. 15° W. and S. 10° E., leave pines.

31.50 Cross road, brs. N. 80° W. and S. 85° E.

35.40 Cross rail fence brs. N. 75° 54' W. and S. 80° E.

SUBDIVISION OF TP. 17 N. R. 17 W. SEC. 26, 27, 34, 35

chains.

39.99 Set a red sand-stone, 14 x 10 x 5 ins., 10 ins. in the ground for a 1/4 sec. cor., marked 1/4 on N. face, and raised a mound of stones 2 ft. base, 1-1/2 ft. high N. of cor.

A pine 16 ins. in diam. brs. N. 3° W. 80 lbs. diam. marked 1/4 S. 26 B. T.

No other bearings in limits. Rite impracticable.

descend gradually through scattering pine timber.

46.00 Cross gulch 30 lbs. wide, course S. 52° W. brs. N. 37° E.

52.78 Cross rail fence brs. S. 22° 30' W. 600 ft., then S. and N. 23° 40' E. 275 ft., then S. 75° 54' E.

53.00 cross gulch, 20 lbs. wide, course S. brs. N/

54.00 Cross road brs. N. 22° E. and S. 22° W.

ascend rapidly slope, through scattering cedars

65.00 Ascend more gradually through dense greasewood brush.

70.00 Top and ascend slightly through scattered brush.

79.98 The cor. of sec. 26, 27, 34, and 35.

Land mountainous.

Soil stony, 4th rate.

Timber pine and juniper.

Undergrowth, oak and greasewood.

Mountainous or heavily timbered land and land

covered with dense undergrowth 79.98 chns.

N. 0° 1' W. bet. sec. 26 and 27.

gradually descend

14.000 cross swale, course N. 80° W.

ascend rocky slope through greasewood brush.

30.00 Top and over rolling top

40.00 Set a calpaied stone 18 x 8 x 4 ins., 13-1/2 ins. in the ground for a 1/4 sec. cor., marked 1/4 on W. face, and raised a mon. of stones 2 ft. base, 1-1/2 ft.

high, W. of cor. A juniper 36 ins. in diam. brs. 71 3/4° E. 5.54 ch. marked 1/4 S. 26 B. T.

chains. No bearings available. Pits impracticable. *within 8 chs distance*

59.00 Descend malpais slope.

66.00 Bottom of wash and ascend

69.00 Top of rise.

72.00 Descend rapidly over rough malpais to Pine Creek.

73.00 Center of Pine Creek, 1.50 chs. wide, course N. 80° W., 300 ft. then N. 20° W., 1/2 chs. S. 80° E.

73.00 Ascend steep rocky slope.

80.00 Set a malpais stone, 22 x 8 x 6 ins. 16-1/2 ins. in the ground for cor. to sec's 22, 23, 26, and 27, marked with 2 grooves on the S. and 2 grooves on the E. edges. (C. W. C. ...)

A juniper 15 ins. in diam. brs. S. 48° 55' W., 1.05 chs. dist., marked T. 17 N. R. 7 W. S. 27 B. T. (C. W. C. ...)

A juniper 40 ins. in diam. brs. N. 48° 42' E., 1 chn dist., marked R. 17 N. R. 7 W. S. 23 B. T. (C. W. C. ...)

A juniper 40 ins. in diam. brs. S. 62° 58' E., 3/4 chs. dist., marked T. 17 N. R. 7 W. S. 26 B. T. (C. W. C. ...)

A juniper 19 ins. in diam. brs. N. 36° 18' W., 1/2 chs. dist., marked T. 17 N. R. 7 W. S. 22 B. T. (C. W. C. ...)

Land mountainous,

Soil stony, 4th rate.

Timber pine and juniper

Undergrowth oak and greasewood.

Mountainous land 80 chs.

September 29, '05.

see P. 5 - supplemental notes.

Sept. 30, '05. at 7 A.M. 1. m. (to) I set off 34° 51' N. on the lat. arc and 2° 30' S. on the decl. arc and determine a meridian with the solar at the cor. of sec's 22, 23, 26, and 27. Thence I run N. 89° 58' E. on a random line bet. sec's 23 and 26.

40.00 Set a temp. 1/4 sec. cor.

SUBDIVISION OF T₁ 17 N. R. 7 W.

17

chains.	
79.98	Intersect a N. and S. line 1-1/2 lks. S. of the cor. of sec. 23, 24, 25 and 26. Thence I run S. 89° 57' W. on a true line bet. sec's 23 and 26. over rolling ground.
6.18	Cross Conger's rail pasture fence, brs. S. 33° 15' W. and N. 17° 40' E. 300 ft. then N. 40° E.
6.47	Cross wagon road, follows rail fence.
12.50	Cross Pine Creek 60 lks. wide, course S. 15° W. (500 ft. then W. and brs. N. 15° E.
14.76	Cross wire fence, Wes Martin's pasture, brs. S. 19° 10' W., to corral, about 500 ft. and N. 19° 10' E. to S. E. cor. of Baca Land Grant.
19.50	The site of old saw mill, brs. S. 3° 50' W. about 700 ft. Corral about 75 ft. (diam. brs. S. 20° 15' E. 350 ft.
	Cross marshy flat, pine timber all cut off.
35.00	ascend gradually.
39.99	Set a malpais stone 20 x 9 x 6 ins., 15 ins. in the ground for a 1/4 sec. cor. marked 1/4 on the N. face. A pine 10 ins. in diam. brs. N. 15° 30' E. 97 lks. dist, marked 1/4 S. 23 B. T. A pine 9 ins. in diam. brs. S. 44° 30' W. 31 lks. dist. marked 1/4 S. 26 B. T. ascend through heavy pine timber.
51.00	Top of slope, leave heavy timber, and descend.
55.00	Cross gulch 5 lks. wide, course S. 80° E. 600 ft. to Pine Creek, brs. N.
61.00	Top of hill and descend.
73.00	Cross gulch 15 lks. wide, course S. brs. N., ascend through pine timber.
75.50	Leave timber.
79.98	The cor. of sec. 22, 23, 26, and 27. Land mountainous. Soil rocky, 4th rate.

see p. 6
supplemental
notes.

chains.	<p>Timber pine and juniper. Mountainous or heavily timbered land 79.98 chns.</p>
<p>12.00 22.00 26.00 35.05 35.55</p>	<p>N. 89° 29' W. bet. sec's 22 and 23. ascend gradually over malpais boulders Top and ascending gradually, scattered brush and juniper Descend abruptly through dense oak brush Cross gulch 15 lks. wide, course S. W. brs. N. E. ascend steep rocky slope through heavy greasewood brush Cross wire fence of Baca Land Grant, brs. 7 1/2' and W. Intersect the S. bdy. line of the Baca Land Grant, float No. 5., at a point from which Mile Cor. No. 32. brs. S. 89° 29' E., 9.30 chns. Set a malpais stone 17 x 11 x 5 ins., 12 ins. in the ground for C. C. of sec's 22 and 23, marked C. C. on the S., B. L. V. on the N. face, and cut 2 grooves on E. and 4 grooves on W. faces, and raised a mon. of stones 2 ft. base, 1-1/2 ft. high S. of cor. No brs. available. Pits impracticable. Land mountainous. Soil stony, 4th. Pats. Timber juniper and cedar. Undergrowth oak. Mountainous land, or land covered with dense undergrowth 35.55 chns.</p>
<p>9.30</p>	<p>S. 89° 29' E. from the C. C. of sec's 22 and 23, (on a connecting line) along the S. bdy. of Grant. The 32 Mile Cor. of the Baca Land Grant. A malpais stone not marked, 6 x 12 x 20 ins., and set 4 ins. I reset stone firmly and marked the same B. L. V. 32 M., and surround same by a mon. of stones 2 ft. base 2 ft high.</p>

SUBDIVISION OF TP. 307 N. R. 7 W.

19 C

chains.

A pine 28 ins. in diam. dead, brs. S. 43 W. 72 lks. dist., marked 32 M. B. T.

No other bearings found.

Connecting line 9.30 chns.

Sept. 30, '05.

October 2, '05., at 7h. 30m. A. M. I. m. t., at the Stan. Cor. of secs. 33 and 34 on S. bdy. of Tp. I set off $34^{\circ} 49'$ N. on lat. arc, and $3^{\circ} 26'$ S. on decl. arc., and determine a meridian with the solar thence I run

N. $0^{\circ} 2'$ W. bet. secs. 33 and 34

ascend steep rough slope, summit of same. 35.

35.00 Center of rounding top.

40.00 Set a malpais stone, 14 x 6 x 5 ins., 10 ins. in the ground for a $1/4$ sec. cor., marked $1/4$ on W. face.

An oak, 6 ins. diam. brs. N. $78^{\circ} 49'$ E. 2.65 chns.

dist., marked $1/4$ S. 34 B. T.

A juniper 4 ins. diam., brs. N. $62^{\circ} 57'$ W., 2.49 chns.

dist., marked $1/4$ S. 33 B. T.

descend uniform slope over malpais boulders through scattered juniper trees.

72.00 descend abruptly.

77.00 Malpais edge, brs. N. $41^{\circ} 40'$ W. and S. $70^{\circ} 30'$ E.

descend steep slope over large boulders.

80.00 Bottom. Point for cor. of secs. 27, 28, 33 and 34.

falls on a malpais stone in place, $3-1/2$ x $2-1/2$ ft.

by 3 ft. above the ground., marked a cross (x) at the

exact cor. point and cut 1 groove to S/ and 3 grooves to E. of cross.

A pine 7 ins. in diam., brs. N/ $76^{\circ} 11'$ E., 26 lks. dist., marked T. 17 N. R. 7 W., S. 27 B. T.

An oak 4 ins. diam., brs. S. $40^{\circ} 10'$ E., 27 lks. dist.

marked T. 17 N. R. 7 W. S. 34 B. T.

A juniper 10 ins. in diam., brs. S. $77^{\circ} 44'$ W., 1.42 chns.

dist., marked T. 17 N. R. 7 W. S. 33 B. T.

SUBDIVISION OF T. 307 N. R. 177 E.

chains. A pine 18 ins. in diam. brs. N 69° 25' W, 68 lks.
 dist. marked T. 17 N. R. 7 W. S. 28 B. T.
 Land mountainous
 Soil stony. 4th rate.
 Timber pine and juniper.
 Underbrush oak.
 Mountainous land 80.00 chns.

40.00 East on a random line bet. sec. 27 and 34.
 Set a temp. 1/4 cor.
 79.96 Intersect a N and S line at 10 lks. N of the cor. of
 secs. 26, 27, 34 and 35, thence I run,
 N 89° 35' W on a true line, bet. secs. 27 and 34
 ascend gradually
 15.00 Over rough malpais ledges, ascend more abruptly.
 25.00 Top scattering cedar and brush
 33.00 descend.
 40.00 Set a malpais stone 14 x 12 x 8 ins., 9 ins. in the
 ground, for a 1/4 sec. cor., marked 1/4 on N face and
 raised a mon. of stone 2ft. base, 1-1/2 ft. high N.
 of cor.
 A juniper 14 ins. in diam, brs. N 37° 42' W, 1.05 chns.
 dist., marked 1/4 S. 27 B. T.
 No other bearings available. Pits impracticable.
 44.00 descend over malpais edge, brs. NW and SW
 49.00 Bottom of steep slope.
 67.80 Edge of malpais, lower level,
 descend steep bank diagonally.
 73.20 Cross gulch, 30 lks. wide, course N 50° W, brs. S 45° E.
 ascend.
 79.96 The cor. of secs. 27, 28, 33 and 34
 Land mountainous.
 Soil stony. 4th rate.
 Timber juniper.
 Mountainous lands 79.96 chns.

chains.

- No 0° 2' W, bet. secs. 27 and 28.
 descend.
- 1.50 Cross gulch, 25 lks. wide, course N W to Pine Creek,
 brs. S. E.
 ascend steep and very rough point.
- 7.25 Junction of above gulch and Pine Creek is due W, Pine
 Creek brs. S 70° W and N E
- 9.35 Top of point, and descend steeply through dense oak brush
- 13.00 Bottom, leave brush
- 13.85 Cross Pine Creek, 1 chn. wide, course S 36° W brs. N
 29° E, 800 ft., then N E
 ascend rough malpais slope, steep.
- 20.00 Top and over rough, brushy, rolling side slope
- 28.00 descend.
- 32.20 Cross Pine Creek, 1.25 chns. wide, course S E brs. N
 35° W.
 ascend over point of land through dense brush.
- 37.60 Cross Pine Creek, course S W brs. N 70° E.
 Line skirts a gulch coursing S. on E bank.
- 40.00 Point falls on a malpais stone in place, 30 x 12 ins.
 2 ins. above the ground, marked a cross, (x) at the exact
 point for 1/4 sec. cor. and 1/4 to W of cross, and
 raised a mound of stone 2 ft base, 1-1/2 ft. high, W
 of cor.
 A pine, 9 ins. diam, brs. S. 80 W., 56 lks. dist., mark-
 ed 1/4 S 28 B. T.
 No other bearings available, Pits impracticable.
 Continue up the gulch, very rocky, through brush and
 scattered pine.
- 47.00 At E. bank of gulch 12 lks. wide, course S, brs. N
 35° W.
 ascend steep rough malpais slope.
- 51.00 Top and over rolling surface.
- 80.00 Set a malpais stone 16 x 12 x 4 ins., 11 ins. in the
 ground, for cor. of secs. 21, 22, 27 and 28.

chains.

marked with 3 grooves on N and 2 grooves on S edges, and raised a mound of stones 2 ft base, 1-1/2 ft. high, W of cor.

No bearing available. Pits impracticable.

Land mountainous.

Soil stony, 4th rate.

Timber pine and juniper.

Underbrush oak.

Mountainous land and land covered with dense undergrowth 80 chns.

October 2nd, '05.

October 3rd, '05: At 8 h. 30m. A. M., 1. m. t., I set off 34° 51' N on the lat. arc, and 3° 51' S on the decl. arc, and determined a meridian with the solar

at the cor. of secs. 21, 22, 27 and 28, thence I run, S 89° 56' E, on a random line bet. secs. 22 and 27.

40.00 Set a temp. 1/4 cor.

80.04 Intersect a N and S line, 8 lks. N of the cor. of secs. 22, 23, 26 and 27.

Thence I run,

N 89° 52' W on a true line bet. sec. 22 and 27.

W descend rough malpais slope,

8.50 cross Pine Creek, 1.50 chns wide, course N-W brs. S E ascend very rough broken slope

20.00 Ascend more gradually

25.00 over top and descend

30.00 descend rapidly.

37.00 Through pine timber.

40.02 Set a malpais stone 16 x 12 x 8 ins., 11 ins. in the ground for 1/4 sec. cor, marked 1/4 on N face, and raised a mound of stones 2 ft base, 1-1/2 ft high N of cor.

An oak tree, 12 ins. in diam, brs. S. 40° E, 6 lks. dist, marked 1/4 S. 27 B. T.

SUBDIVISION OF T. 17 N. R. 7 E. S. 21

<p>chains. 43.00 44.00 45.50 54.00 66.00 80.04</p>	<p>No other bearings available. Pits impracticable: descend steep stony slope, through oaks and pine. bottom of slope, leave heavy timber center of Pine Creek, 2 chns. wide. course S. 20° W. brs. N 35° E. ascend steep rough slope ascend more gradually top and over top then descend. the cor. of secs. 21, 22, 27, and 28. Land mountainous, Soil stony. 4th rate. Timber pine, oak and juniper. Underbrush oak. mountainous or heavily timbered land, 80.04 chns.</p>
<p>27.00 36.13 36.35</p>	<p>N. 0° 2' W., bet. secs. 21 and 22. ascend open uniform and rocky slope. Foot of steeper more rocky slope. Intersect the S bdy. of the Back Land Grant, at a point from which the 33 Mile cor. bgs. S. 89° 29' E. 8.29 chns. dist. This falling being more than the limit of error allowed, I chain the bdy. of the Grant from the 33 M to the 32 M. cor., and find the latter cor. to be S 89° 29' E, 81.02 chns dist., and therefore conclude the falling to be correct, I therefore set a malpais stone 17 x 10 x 7 ins., 12 ins. in the ground for the C. C. of secs. 21 and 22, marked C. C. on the S and B. L. V. on N faces and cut 3 grooves in the E and W faces and raised a mon. of stone 2 ft. base and 1-1/2 ft high S. of cor. A juniper, 16 ins. diam, brs. S 88° 28' W, 2.44 chns. dist., marked C. C. T. 17 N. R. 7 S. 21, B. T. No other bearing available. Pits impracticable. Cross vine fence of Grant, brs. N. 88° 20' W, and S. 87° 29' E</p>

chains:

Land mountainous.

Soil stony, 4th rate.

Timber juniper.

Mountainous land, 36.13 chns.

Connecting line, 8.29 chns.

October 4, '05. at 7 h. 30m. A. M., 1. m. t., I set off $34^{\circ} 49'$ N of the lat. arc, and $4^{\circ} 13'$ S. on the decl. arc, and determine a meridian with the solar the cor of secs. 32 and 33, on the S boundary of the Tp.; thence I run N. $0^{\circ} 2'$ W, bet. sec. 32 and 33; descend rough malpais slope.

8.00 Cross gulch 15 fts. wide, course N W brs. S E ascend steep slope.

16.00 top of point and descend.

22.00 descend abruptly the steep bank of Pine Creek.

31.00 Cross Pine Creek 1 chr. wide, course S $75^{\circ} 40'$ W, brs N $51^{\circ} 30'$ E

ascend steep rocky side of canon

40.00 Set a malpais stone 14 x 9 x 8 ins., 19 ins. in the ground for 1/4 sec. cor., marked 1/4 on W face, and raised a mound of stones 2 ft base and 1-1/2 ft high, W of cor.

No bearings available, pits impracticable.

49.00 top of steep slope, and ascend gradually

80.00 Set a malpais stone 15 x 10 x 8 ins., 9 ins. in the ground, for the cor. of sec. 28, 29, 32 and 33, marked with 1 groove on S and 4 grooves on E edges.

A juniper 20 ins. diam. brs. S $87^{\circ} 15'$ W, 3.93 dist, marked T. 17 N. R. 7 W. S. 32 B. T.

A juniper 30 ins. diam. brs. N $28^{\circ} 51'$ W, 3.73 chns. dist., marked T. 17 N. R. 7 W. S. 29 B. T.

A juniper 14 ins. diam., brs. N $20^{\circ} 13'$ E, 2.43 chns. dist, marked T. 17 N. R. 7 W. S. 28 B. T.

chains.

a juniper 48 ins. in diam, brs. S. 62° 5' E., 2.46 chns
dist., marked T. 17 N. R. 7 W. S. 33 B. T.

Land mountainous,

Soil stony 4th rate.

Timber juniper.

Undergrowth oak.

Mountainous land, 80.00 chns.

40.00 East on a random line bet. sec. 28 and 33.
Set a temp. 1/4 sec. cor.

79.98 Intersect a N and S line, 3 lks. S of the cor. of secs.
27, 28, 33, and 34, thence I run
S 89° 59' W on a true line, bet. secs. 28 and 33,
ascend very rough malpais slope diagonally.

10.00 top of steep slope and over rounding top.

14.00 Malpais edge brs. S W and N 80° E
descend steep rough slope

19.75 Cross Pine Creek, two chns. wide, course S W brs. N
70° E.
ascend very steep rough slope

25.40 top of malpais edge, brs. N and S
ascend steep slope

30.40 top of steep slope, and ascend more gradually

35.50 top of malpais mountain and descend

39.99 point for 1/4 sec. cor falls on a malpais boulder in
place 3 x 3 ft. x 16 ins. out of the ground, chiseled
a cross (x) at the exact cor. point of the N face of
boulder and 1/4 to the N of cross
A juniper 12 ins. diam, brs. N. 0° 15' E, 2.20 chns
dist, marked 1/4 S. 28 B. T.
A juniper 8 ins. diam, brs. S 68° 29' W, 98 lks. dist.
marked 1/4 S. 33 B. T.
descend malpais slope

65.00 Cross gulch 15 lks wide, course S 30° E brs. N 30°
W.

<p>chains.</p> <p>74.00</p> <p>79.98</p>	<p>ascend</p> <p>top and descend</p> <p>The cor. of sec. 28, 29, 33 and 32</p> <p>Land mountainous</p> <p>Soil stony, 4th rate</p> <p>Timber juniper and pine.</p> <p>Mountainous land, 79.98 chns.</p> <p>October 4, '05.</p>
<p>8.00</p> <p>40.00</p> <p>54.00</p> <p>80.00</p>	<p>October 5, '05, at 7 h. 30m. A. M., l. m. t., I set off 34° 50' N on the lat. arc, and 4° 35' S on the decl. arc and determine a meridian with the solar, at the cor. of secs. 29, 28, 32 and 33, thence I run N 0° 2' W bet. secs. 28 and 29.</p> <p>ascend malpais slope.</p> <p>top of slope and over rolling land, small malpais boulders.</p> <p>Set a malpais stone 16 x 9 x 7 ins., 11 ins. in the ground for a 1/4 sec. cor., marked 1/4 on W face, and raised a mound of stones 2 ft base 1-1/2 ft high, W of cor.</p> <p>No bearings available. pits impracticable.</p> <p>top of rounding hill.</p> <p>Set a malpais stone, 12 x 8 x 7 ins., 8 ins. in the ground for the cor. of secs. 20, 21, 28 and 29, marked with 2 grooves in the S and 4 grooves on the E edges and raised a mon. of stone, 2 ft, base 1-1/2 ft high, west of cor.</p> <p>No bearings available. pits impracticable.</p> <p>Land mountainous.</p> <p>Soil rocky 4th rate.</p> <p>No timber</p> <p>Mountainous land 80.00 chns.</p>
<p></p>	<p></p>

chains. N. 89° 59' E on a random line, bet. secs. 21 and 28.

40.00 Set a temp. 1/4 sec. cor.

80.00 Intersect a N and S line, 12 lks. S of the cor. of secs. 21, 22, 27 and 28. thence I run S 89° 54' W on a true line, bet. secs. 21 and 28. ^{over} ~~and~~ uniform gradual slope.

30.00 Cross wash 20 lks. wide, course S 600 ft, then S E brs. N ascends

49.00 Set a malpais stone, 15 x 8 x 6 ins., 10 ins. in the ground for 1/4 sec. cor., marked 1/4 on the N face, and raised a mound of stones 2 ft base 1-1/2 ft high, N of cor.

No bearings available pits impracticable.

ascends smooth uniform slope. more rocky

80.00 The cor. of secs 21, 22, 27 and 28.

Land mountainous.

Soil rocky 3rd rate

No timber

Mountainous land 80.00 chns.

N 0. 2' W, bet. secs. 20 and 21, ascend uniform slope small boulders rougher at the top.

36.70 Cross wire fence, brs. S. 85° 40' W and N 85° 40' E

37.41 Intersect the S bdy. of the Baca Land Grant at a point from which the 34 M cor. brs. S 89° 33' E, 8.02 chns. point for C. C. of sec. 20 and 21, falls on a malpais stone in place, 30 x 18 ins x 10 ins above the ground, chiseled a cross (x) at the exact corner point and C. C. to S. of cross, and B. L. V. to N of cross, (with 4 grooves to E and 2 grooves to W of cross, and raised a mound of stones 2 ft. base 1-1/2 ft. high-S. of cor.

No bearings available. Pits impracticable.

Land mountainous.

chains.	<p>Soil stony 4th rate. No timber. Mountainous land 37.40 chns.</p>
8.02	<p>From the C. C. of secs. 20 and 21, I run S. 89° 33' E, on a connecting line along the S bdy. of Grant A mon. of stones 2 ft base by 1-1/2 ft. wide, build directly under a wire fence which bears S. 85° 40' W and N. 85° 40' E. Mon. not marked. After diligent search, no other evidences of the cor. being found, I set a malpais stone, 14 x 12 x 8 ins., 10 ins. in the ground, in the center of the old mon., and chiseled the stone B. L. V. 34 M. and surround the same by a mon. of stones 1-1/2 base, 2 ft. high No bearings available, pits impracticable. connecting line 8.02 chns. October 5, '05.</p>
<p>5.00 19.00 26.00 30.00 40.00</p>	<p>October 6, '05. At 7 h. 30m. A. M., I set off 34° 40' N on the lat arc; and 4° 59' S on the decl. arc, and determined a meridian with the solar, at the cor. of secs/ 31 and 32, on the S. bdy of the Tp. Thence I run, N 0° 3' W, bet. sec. 31 and 32 descend rocky slope Cross wash, 15 lks. wide, course E, hrs. W. and ascend top of flank of mt. and over descend abruptly over malpais Cross draw, course N. 75° E, hrs. S: 75° W, about 600 ft and ascend Set a malpais stone 14 x 8 x 6 ins., 10 ins in the ground for a 1/4 sec. cor., marked 1/4 on W face and raised a mound of stones, 2 ft base, 1-1/2 ft high, W of cor.</p>

SUBDIVISION OF TP. 17 N. R. 7 W. 29.

chains.	No bearings available, pits impracticable. ascend
44.50	top of hill and over
46.20	Malpais edge, brs. N. 35° W and S. 35° E. A bend in Pine Creek brs. S 73° E, about 3/8 to 1/2 mile dist. (C.) descend steep rough slope (C.)
54.80	Cross Pine Creek diagonally 1.50 chns wide, course N. 27° W, brs. S 43° E. Ascend rough slope
70.00	Ascend abruptly
72.00	top of bank, over rolling top slightly descending
80.00	Set a malpais stone 16 x 8 x 7 ins. 11 ins. in the ground for cor. of secs. 29, 30, 31 and 32, marked with 5 grooves on E and 1 groove on S edges., and raised a mound of stone 2 ft base and 1-1/2 ft high W of cor. No bearings available, pits impracticable. Land mountainous Soil stony 4th rate. No timber. Mountainous land 80.00 chns.
40.00	East on a random line bet. secs. 29 and 32 Set a temp. 1/4 sec. cor.
80.02	Intersect a N and S line 10 lks. N of the cor. of secs 28, 29 32 and 33, thence I run N 89° 56' W on a true line bet. secs. 29 and 32 descend gradually
4.00	Cross swale, course S brs. N ascend gradually
10.00	ascend steep slope through dense brush
20.00	leave dense brush ascend gradually
40.01	top and point for 1/4 sec. cor falls on a malpais stone in place 6 x 6 ft x 5 ins. above the ground, cut a cross ⁽⁺⁾ on N end of rock at the exact cor. point, and 1/4 to N of cross, and raised a mon. of stone 2 ft base,

chains.

1-1/2 ft. high, N of cor.

A juniper 14 ins. in diam, brs. N. 59° 2' W. 2.28^{chs} dist.,
marked 1/4 S. 29 B. T.

No other bearings available, pits impracticable.

46.00 descend over malpais boulders.

60.00 ascend gradually

80.02 The cor of secs 29, 30, 31 and 32.

Land mountainous

Soil stony, 4th rate

Timber juniper

Undergrowth oak.

Mountainous land and land covered with dense under-
growth, 80.02 chns.

W. on a random line bet. secs 30 and 31.

40.00 Set a temp 1/4 sec. cor.

79.96 Intersect the W bdy of township of 14 lks. S of the cor
of secs 25, 30, 31 and 36, thence I run

S 89° 54' E, on a true line bet. secs 30 and 31,

ascend rough steep slope through scattered brush

13.00 top of ridge, brs. S. and descends to the N, 15° W.

35.00 Cross draw, course ^{N.E.} brs. S W.

39.96 Set a malpais stone 17 x 12 x 4 ins., 12 ins. in the
ground for 1/4 sec. cor, marked 1/4 on N base and rais-
ed a mound of stones 2 ft base and 1-1/2 ft high N. of
cor.

No bearings available. Pits impracticable.

48.85 Malpais edge brs. N 70 W and S 70 E

descends steep slope

55.40 Cross Pine Creek 1.25 chns. wide, course N. W. brs.
S. E.

ascend steep slope through dense oak brush.

62.22 top of malpais edge, brs. N 34 W, and S 34 E, leave
brush and ascend gradually.

79.96 The cor. of secs. 29, 30, 31 and 32.

SUBDIVISION OF T. 17 N. R. 17 W.

31

chains.

Land mountainous

Soil stony, 4th rate.

Timber juniper

Undergrowth oak.

Mountainous land or land covered with dense undergrowth 79.96 chns.

October 6, '05,

October 7, '05, at 7 h. 30m. A. M. I. m. t., I set off $34^{\circ} 50' N$, on the lat. arc, and $5^{\circ} 21' S$ on the decl. arc, and determine a meridian with the solar at the cor. of secs. 29, 30, 31 and 32., thence I run $N. 0^{\circ} 3' W$ bet. secs 29 and 30.

descend over malpais rocks

24.50 Cross rocky gulch 15 lks. wide, course $S 85^{\circ} W$, brs. $N 76^{\circ} E$.

ascend rough ground

40.00 Set a malpais stone 16 x 10 x 6 ins., 11 ins. in the ground for a $1/4$ sec. cor., marked $1/4$ on W face.

A juniper 12 ins. in diam, brs. $S/ 27^{\circ} 4' E$, 1.42 chns dist, marked $1/4 S. 29, B. T.$

A juniper 36 ins. in diam, brs. $N. 7^{\circ} 40' W$, 3.82 chns dist., marked $1/4 S. 30 B. T.$

descend over broken ground

68.00 Cross gulch, 10 lks. wide, course S. W. brs. N. E.

ascend

80.00 set a malpais stone 17 x 8 x 4 ins., 12 ins. in the ground for the cor. of secs. 19, 20, 29 and 30, marked with 2 grooves on the S and 5 grooves in E edges and raised a mon. of stone 2 ft base, 1-1/2 ft high, W of cor.

A juniper 16 ins. in diam, brs. $N. 61^{\circ} 40' E$, 2.25 chns dist., marked T. 17 N. R. 7 W. S. 20 B. T.

No other bearings available, pits impracticable.

Land mountainous.

Soil stony, 4th rate.

chains.	<p>No timber.</p> <p>Mountainous land 80.00 chns.</p>
<p>40.00</p> <p>80.08</p> <p>20.00</p> <p>23.00</p> <p>40.04</p> <p>80.08</p>	<p>S. $89^{\circ} 56'$ E, on a random line bet. secs. 20 and 29.</p> <p>Set a temp. $1/4$ sec. cor.</p> <p>Intersect a N and S line 4 lks. N of the cor. of secs. 20, 21, 28 and 29, thence I run</p> <p>N $89^{\circ} 54'$ W on a true line bet. secs. 20 and 29, over rolling land gradually rising.</p> <p>top and descend, over malpais rocks.</p> <p>descend steeper slope</p> <p>Set a malpais stone 14 x 9 x 6 ins., 10 ins. in the ground for $1/4$ sec. cor. marked $1/4$ on N face, and raised a mon. of stone 2 ft base, 1-$1/2$ ft high, N. of cor.</p> <p>No bearings available. Pits impracticable.</p> <p>descend over malpais boulders through scattered brush and juniper trees.</p> <p>The cor. of secs. 19, 20, 29 and 30.</p> <p>Land mountainous</p> <p>Soil stony, 4th rate.</p> <p>Timber juniper</p> <p>Undergrowth oak.</p> <p>Mountainous land 80.08 chns.</p>
<p>40.00</p> <p>79.88</p> <p>10.38</p> <p>15.75</p>	<p>N. $89^{\circ} 54'$ W, on a random line bet. secs. 19 and 30.</p> <p>Set a temp $1/4$ sec. cor.</p> <p>Intersect the W. Ed. of Tp. 14 lks. N. of cor. of secs 19, 24, 25, and 30., thence I run</p> <p>E on a true line bet. secs. 19 and 30.</p> <p>descend gradually, very rough</p> <p>Malpais edge, brs. N. 40° E and S. 18° E, then S. 40° W.</p> <p>descend steep slope.</p> <p>Cross gulch 20 lks. wide, course S. brs. N. 46° E for 350 ft where a canon enters from the E.</p>

SUBDIVISION OF TP. 17-N. R. 7-W. 33

chains:	<p>ascend point, 200 ft above creek.</p> <p>21.30 top of malpais point, gulch 300 ft. north, flows N. 80° W brs. S. E., descend rough slope diagonally.</p> <p>29.00 Cross gulch 20 lks. wide, course N. W., brs. S. E.</p> <p>31.75 Recross same gulch, course S. W. brs. N. E. ascend very steep rough malpais slope, much brush.</p> <p>39.88 Point for 1/4 sec. cor, falls in an inaccessible place below malpais edge, therefore, put in a Witness cor. at 1 ch. E of true point.</p> <p>40.88 Point for W. C. of 1/4 sec. cor falls on a malpais boulder in place, 6 x 7 ft x 6 ft above the ground, chisel a cross⁽⁺⁾ on the N. W. cor. of the boulder at the exact cor. point and W. C. and 1/4 to N. of cross (x), and raised a mon. of stone 2 ft ^{base} 1-1/2 ft high, N. of cor A juniper 30 ins. in diam, brs. S. 3° 52' W, 90 lks. dist., marked W. C. 1/4 S. 30 B. T.</p> <p>No other bearings available. Pits impossible.</p> <p>W. C. 1/4 cor. is on malpais edge, brs. N. 55° 20' E and S. 67° 30' W ascend rough slope</p> <p>79.88 The cor. of secs. 19, 20, 29, and 30. Land mountainous Soil stony, 4th rate. Timber juniper. Undergrowth oak Mountainous land 79.88 chns.</p> <p style="text-align: right;">October 7, '06.</p>
9.00	<p>October 9, '06, at 7h. Am. 1: m. t., I set off 34° 51' N, on the lat. arc, and 6° 6' S on the decl. arc and determine a meridian with the solar at the cor. of secs. 19, 20, 29 and 30: Thence I run N. 0° 3' W bet. secs. 19 and 20 ascend malpais slope.</p>

BOOK 1908

chains 14.21 22.00 30.75 37.94 37.97 7.40 7.49	<p>Edge of malpais, brs. N. 7° E. 1000 ft then N and S 72° W descend rough slope</p> <p>Cross canon 250 ft deep, 20 lks. wide, ^{cross} S. 75° W. brs. N. 70° E. ascend opposite wall of canon.</p> <p>Malpais edge, brs. S. 70° W and N E</p> <p>intersect the S. bdy. of the Baca Land Grant at a point from which the 35 mile cor. brs. S. $89^{\circ} 27'$ E. 7.49 chns.</p> <p>Set a malpais stone 21 x 17 x 16 ins., 8 ins. in the ground to bed rock, and carefully surrounded by stone until bedded 12 ins. for the C. C. of secs. 19 and 20. Chiseled a cross (x) and the exact cor. point, and C. C. to S. of cross., and B. L. V. to N of cross, and 5 grooves to E and 1 groove to W of cross, and raised a mon. of stone 2 ft base, and 1-1/2 ft high, S of Cor. A cross (x), scribed on a juniper tree, 22 ins. in diam, brs. due W, 13 lks. dist, and marked C. C. T. 17 N. R. 7 W. S. 19 B. T.</p> <p>No other bearings available. Pits impracticable.</p> <p>To wire fence, brs. E and W. Land mountainous Soil stony, 4th rate. Timber juniper Mountainous land 37.94 chns.</p> <p>From the C. C. of secs. 19 and 20, I run S. $89^{\circ} 27'$ E on a connecting line, along the S bdy. of the Baca Land Grant.</p> <p>A mon. of stones 1-1/2 ft base, 1-1/2 ft high firmly built on top of a round malpais boulder 6 ft. in diam, after diligent search, no marked stone being found, at</p> <p>I set a malpais stone 18 x 14 x 12 ins., 13-1/2 ins. in the ground, 9 lks., E of the boulder, and chiseled B. L. V. on N and 35 M. on S face of stone.</p>
---	--

chains.

No bearings available. Pits impracticable.

This falling from C. C. of secs. 19 and 20, being more than the limit of error allowed, I chain the bdy. of the Grant from the 34 Mile cor. to the 35 M. cor., and find the latter cor. to be N. 89° 33' W, 80.60 chns. dist., and therefore conclude the falling to be correct.

The true course bet. the 35 and 36 Mile cor. is N. 89° 27' W, 80.60 chns.

Connecting line 7.49 chns.

October 9, '05.

GENERAL DESCRIPTION

Tp. 17 N. R. 7 W. contains very little soil adapted to the raising of crops. All there is is under fence, at the various ranches in Sec. 23, 24, 25, 26, 35, and 36. These have been but slightly cultivated, and are used chiefly for pasturing the horses kept at the ranches. This is pre-eminently a cattle grazing country of the best kind, but is not adapted to any other purpose. The pine timber in the easterly third of the Tp. is fine white pine in excellent condition. There is no mineral bearing land. The water both flowing and wells is principally localized at the ranches, and is pure and fine.

The country in the east is granite, very rough and greatly eroded, the basins overgrown with pine timber.

The westerly part is entirely covered by great malpais or lava flows, very thick and deeply scored with rough canons, yet presenting from a distant view point a rolling, smooth surfaced country, which upon closer inspection is extremely rugged, and thickly covered with malpais boulders, which are sharp and rough, making it exceedingly difficult to traverse the country except by trails.

The soil of this region when wet is almost impassable for man or beast, being a deep sticky clay or adobe.

The general elevation is about 6500 feet.

A. B. Mader

U. S. Dept. Surveyor.

ATTEST

Retracement
RETRACEMENT OF THE FRAC'T E. BDY. OF THE BACA FLOAT NO. 5.

chains.	<p>Sept. 28, '05.</p> <p>From the temp. point set for the intersection of the line bet. the secs. 14 and 23, T. 17 N. R. 7 W, with the E. bdy. of the Baca Grant, I run;</p> <p>S on a trial line.</p> <p>descend steep rocky mountain slope through heavy oak brush.</p> <p>20.00 enter pine timber, a gulch about 50 ft. W.</p> <p>descend rocky slope through brush.</p> <p>31.50 Cross gulch 25 lks. wide, course S. E. hrs. N. 15° W.</p> <p>34.12 14 lks. E. to 31 Mile cor. of Baca float No. 5.</p> <p>A malpais stone firmly set in the ground marked 31M. on S side, surrounded by a mon. of stones 1-1/2 ft base, 1-1/2 ft high, and witnessed by pine trees as called for by the Surveyor General. I chisel B. L. V. on S. side of stone, other faces being too rough.</p> <p>From the temp. intersection point as above, I run N on a trial line.</p> <p>ascend slightly over rough Mt. top.</p> <p>5.00 Descend over rolling, rocky Mt. top through oak brush and acattering junipers.</p> <p>45.50 11.04 chns. E. to 30 mile cor. of Baca float No. 5.</p> <p>A malpais stone firmly set, but not marked, and is witnessed as called for by the Surveyor General. I chisel 30 M. B. L. V. on W. face and surround the stone (rebuild mon.), with a mon. of stones 1-1/2 ft base, 1-1/2 ft high.</p> <p>The bdy. of the Grant from the 30 M cor. to the 31 M cor hrs. S. 0° 39' W, 79.62 chns.</p> <p>Land mountainous.</p> <p>Soil stoney, 4th rate.</p> <p>Timber pine and juniper.</p> <p>Mountainous land 79.62 chns.</p>
---------	---

See supplemental notes.

Retracement

RESURVEY OF THE FRAC'T E AND S BDY. OF BACA FLOAT NO. 5.

BOOK 1908

chains.

S. on a trial line, from the 31 M. cor. over rolling mountain side sloping down toward the N. through pine trees.

11.25

14 lks. W. to S. E. cor. of Baca Float No. 5.

A malpais stone 20 x 6 ins. x 12 ins. out of the ground surrounded by a mon. of stone, 1-1/2 ft base, 1-1/2 ft high, and marked and witnessed as called for by the Surveyor General.

The true course bet. the 31 M. and the S. E. cors. is S. 0° 43' W, 11.25 chns.

Land mountainous.

Soil stony, 4th rate.

Timber heavy pine

Undergrowth oak.

Mountainous land 11.25 chns.

September 28, '05.

September 30, '05.

West on a random line along the S. bdy. of the Baca Grant from the S. E. cor. of the Grant.

ascend steep rocky slope through pine timber.

18.00

Leave pine timber, over top of mountain.

40.00

Start to descend more steeply.

58.00

Descend steep rough slope through dense patches of brush and scattered junipers.

68.85

Cross gulch 30 lks. wide, course S. hrs. N. 20° E.

69.13

Falls 77 lks. N. of 32 M. cor.

A malpais stone 20 x 12 x 6 ins., not marked, loosely set in a small mon. of stones. I reset the cor. stone in the center of the mon. firmly, and chiseled B. L. V. on the N face, and 32 M. on the S. face. and surround to sand by a mon. of stones, 2 ft base, 1-1/2 ft high.

A pine tree, dead, 28 ins. in diam, hrs. S. 43° W, 72 lks. dist., marked 32 M. B. T.

see P. 7 supplemental notes.

see P. 7 supplemental notes.

214

Retracement

RESURVEY OF THE FRAGT IS. BDL. OF THE BACK FLOAT NO. 50

chains. No other bearings available.
 The true course from the S. E. cor. to the 32 M. cor. is N. 89° 22' W, 69.13 chns.
 Land mountainous.
 Soil rocky 4th rate.
 Timber pine and juniper.
 Undergrowth Oak.
 Mountainous land 69.12 chns.
 Sept. 30, '05.

Begin
 October 3, '05.
 N. 89° 22' W, on a random line, from the 32 M. cor. ascend steep rocky slope.
 9.30 Fall two lks. N. of C. C. of secs. 22, 23, T. 17 N. R. 7 W.
 15.00 top and gradually descend, very rocky.
 28.80 Cross gulch 15 lks. wide., rouse S. W. hrs. N. E. ascend over stony ground.
 81.02 Fall 16 lks. N. of the 33 M. cor.
 A malpais stone 17 x 14 x 4 ins., lying loosely in a mon. of stones 1-1/2 ft base, 1-1/2 ft high, and chiseled 33 M.
 A blazed juniper, 36 ins. diam., hrs. N. W., 109 ft.
 I re-set the cor. stone firmly in the ground, in center of old mon., and chiseled B. L. V. on oppo site face to 33 M. and build a mon. of stone 2 ft base, 1-1/2 ft high, N of cor.
 The true course from the 32 M cor. to the 33 M. cor is N. 89° 29' W, 81.02 chns.
 Land mountainous.
 Soil stony, 4th rate.
 Timber pine and juniper.
 Undergrowth oak.
 Mountainous land 81.02 chains.
 October 3, '05.

*See P. 7
 Supplemental
 notes.*

BOOK 1908

chains.
 October 5, '05.
 N. 89° 29' W. on a random line, from the 33 M. cor.
 ascend gradually over rocky slope.
 8.29 Fall 5 lks. S. of C. C. of secs. 21 and 22, Tp. 17 N.,
 R. 7 W.
 16.00 descent rocky slope.
 41.50 cross gulch, 10lks. wide, course S. brs. N.,
 ascend rough slope.
 80.30 Fall 49 lks. S. of 34 Mile cor.
 A malpais stone 14 x 12 x 8 ins., set 10 ins. in the
 ground, in a mon. 1-1/2 ft base, 2 ft high, under wire
 fence, bearing S. 85° 40' W and N. 85° 40' E. Stone is
 chiseled 34 M. B. L. V.
 No bearings available. Pits impracticable.
 The course of bdy. from 33 M. cor. to 34 M. cor. is N.
 89° 08' W, 80.30 chrs.
 Land mountainous.
 Soil stoney, 4th rate.
 Timber junipers.
 Undergrowth oak.
 Mountainous land 80.30 chrs.
 October 5, '05.

October 9, '05.
 N. 89° 30' W on a random line, from the 34 M. cor.
 over rolling mountain, rough and stony, through
 scatteeing brush and junipers
 gradually descending.
 71.50 Edge of canon wall, brs. N. 10° E. and S. 10° W.
 descends steep side of canon, rocky and very rugged.
 77.55 bottom of cannon, cross gulch, 15lks. wide. course S.
 20° W. brs. N. 10° E.
 ascend steep slope, large boulders, and ^d dense oak brush
 in patches.

RESURVEY OF THE FRAC'T S. BDY. OF THE BACA FLOTA NO. 5. ^{41.}

chains.

80.60 Fall 7 lks. N. of 35 M. cor.
 a malpais stone 18 x 14 x 12 ins., 13-1/2 ins. in the ground, chiseled B. L. V. on N. and 35 M. on S. faces.
 A mon. stone 1-1/2 ft base by 1-1/2 ft high is built firmly on top of malpais boulder 6 ft in diam., 9 lks. W. of point.
 No other bearings available. Pits impracticable.
 The true course of the S. bdy. from the 34 M cor. to the 35 M. cor. is N. 89° 33' W., 80.60 chains.
 Land mountainous.
 Soil rocky 4th rate.
 Timber juniper.
 Undergrowth oak.
 Mountainous land 80.60 chains.

4.00 N. 89° 30' W on a random line from the 35 M. cor. ascend precipitous rocky canon side.
 Top edge of canon. hrs. S. 10° W. 350 ft then S. W. and hrs. N. E.
 over broken rolling mesa, scattering juniper.
 7.49 Falls 1 lk. S. of C. C. of secs. 19 and 20, T. 17 N. R. 7 W.
 35.00 descend gradually.
 53.00 descend steep side of canon.
 55.00 cross gulch 15 lks. wide, course S. 10° W. hrs. N. ascend steep broken side of canon.
 58.00 ascend more gradually, very rough surface.
 80.60 Falls 7 lks. S. of 36 M. cor.
 Set a malpais stone 14 x 10 x 6 ins., 10 ins. in the ground, chiseled B. L. V. on N. and 36 M. on S. faces and raised a mon. of stones 2 ft base. 1-1/2 ft high, N. of cor.
 No bearings available Pits impracticable.

RESURVEY OF THE PACIFIC S. BDY. OF THE BAGA FLOAT NO. 5.

BOOK 1908

chains.

The true course of S. bdy. from 35 M. cor. to 36 M. cor is N. 89° 27' W, 80.60 chms.

Land mountainous.

Soil stony, 4th rate.

Timber juniper.

Undergrowth oak.

Mountainous land, 80.60 chains.

October 9, '05.

For resurvey of S. bdy. from 36 M. to 37 M. cor. see notes of survey of Tp. bdy. of Tp. 17 N. R. 7 W.

A. B. Mader

U. S. Dep. Surveyor.

Note For red ink corrections see deputy's letter Feb. 1/1907

Latitudes, Departures and Closing Errors T. 17 N. R. 7 W.

Course.	Dist.	North.	Latitudes. South.	Departures. East.	West.
S 89° 24'	F. 6.77		.07	6.77	
S 89° 27'	E. 80.60		.77	80.60	
S 89° 33'	E. 80.60		.63	80.60	
S 89° 08'	E. 80.30		1.21	80.30	
S 89° 41'	E. 81.02		.45	81.02	
S 89° 02'	E. 69.30		1.18	69.30	
N 0° 45'	E. 10.99	10.99		.14	
N 2° 24'	F. 34.42	34.42		1.44	
N 89° 59'	E. 79.79	.02		79.79	
South	240.00		240.00		
West	480.00				480.00
North	198.71	198.71			
Convergency				.25	
		244.14	244.31	480.21	480.00
			244.14	480.00	
		Error in lat.	<u>0.17</u>	<u>0.21</u> Error in dep.	

MAh.5-7307
246

BOOK 1908

FIELD NOTES

Re
OF THE SURVEY OF THE

Portions of the Subdivisions
of
Township No 17 North, Range No 7 West
of the
Gila and Salt River Base and Meridian
in the
Territory of Arizona
As surveyed by
Arthur B. Mader
U. S. Deputy Surveyor

Of the Gila and Salt River Base and Meridian,

AS SURVEYED BY

Arthur B. Mader, United States Deputy Surveyor,

Under his Contract No. 132, dated April 26, 1905, 189

Survey commenced Feb. 11th 1907, 189

Survey completed Feb. 20th 1907, 189

21

NAMES AND DUTIES OF ASSISTANTS.

R. H. Ferguson Chairman

W. C. Denny "

P. H. Wright "

R. H. Ferguson Flagman

BOOK 1908

222

BOOK 1908

INDEX DIAGRAM.

Township....., Range.....

6	5	4	3	2	1
7	8	9	10	11	12
18	17	16	15	14	13
19	20	21	22	23	24
30	29	28	27	26	25
31	32	33	34	35	36

Handwritten annotations in the diagram:

- Section 14: 50M
- Section 13: 2
- Section 22: 135M
- Section 23: 32M
- Section 24: 31M
- Section 23: 7
- Section 24: 1
- Section 26: 5
- Section 24: 6
- Section 24: 8

Meanders Page.....

PRELIMINARY OATHS OF ASSISTANTS.

WE, R. H. Ferguson, W.C. Denny and P. H. Wright

do solemnly swear that we will well and faithfully execute the duties of chainmen; that we will level the chain over even and uneven ground, and plumb the tally pins, either by sticking or dropping the same; that we will report the true distances to all notable objects, and the true lengths of all lines that we assist in measuring, to the best of our skill and ability, and in accordance with instructions given us, in the survey of

subdivisions in Tp. 17 N, R. 7 W, G. & S. R. M. and Bdy. Baca Float No. 5.

R. H. Ferguson, Chainman.

W. C. Denny, Chainman.

P. H. Wright, Chainman.

Subscribed and sworn to before me this 11 and 13th day of February 1907, 189

A. S. Mader

U. S. Dep. Surveyor



WE, _____ and _____

do solemnly swear that we will well and truly perform the duties of moundmen in the establishment of corners, according to the instructions given us, to the best of our skill and ability, in the survey of

_____, Moundman.

_____, Moundman.

Subscribed and sworn to before me this _____ day of _____, 189



WE, _____ and _____

do solemnly swear that we will well and truly perform the duties of axmen in the establishment of corners and other duties, according to instructions given us, to the best of our skill and ability, in the survey of

_____, Axman.

_____, Axman.

Subscribed and sworn to before me this _____ day of _____, 189



I, R. H. Ferguson, do solemnly swear that I will well and truly perform the duties of flagman according to instructions given me, to the best of my skill and ability, in the survey of subdivisions of Tp. 17 N, R. 7 W and Bdy's of Baca Float No. 5.

R. H. Ferguson, Flagman.

Subscribed and sworn to before me this 11 day of February 1907, 189

A. S. Mader

U. S. Dep. Surveyor



Resurvey of portions of
 Subdivision of Tp. 17 N, R. 7 W.

see p. 10
 notes p. 10
 117 m R 7 W

February, 18th, 1907. At 8^h 00^m l.m.t. I set off $84^{\circ} 51' N$ on the lat. arc and $11^{\circ} 50' S$ on the decl. arc and determine a meridian with the solar at the cor. of Sec's 23-24-25 and 26

Thence I run,
 $N 0^{\circ} 01' W$, bet. sec's 23 and 24.

over rolling ground, thro' scattered brush
 13.00 gate of pasture fence, fence bro SW and NE

14.35 S.W. cor. of Clark Conger's Barn, 30' x 40', long side bearing S. E.

15.50 Cross Pine Creek, 45 lks. wide, course W 200 ft. then SW, br's $N 80^{\circ} E$ and N. E.

18.46 Cross Camp Wood - Walnut Creek wagon road, bro NE and SW.

20.00 ascend rough east slope

35.00 top and descend

39.99 Fill $9\frac{1}{2}$ lks. E of $\frac{1}{4}$ sec. cor. as previously set.

40.00 Reset the original stone, a malpais, 15 x 10 x 6 ins, 10 ins. in the ground, for $\frac{1}{4}$ sec. cor, marked $\frac{1}{4}$ on W face.

A juniper, 12 ins. diam. bro, $S 27^{\circ} 08' E$, 41 lks. marked $\frac{1}{4} S 24 B T$.

An oak, 5 ins. diam. bro, $S 74^{\circ} 35' W$, 86 lks. marked $\frac{1}{4} S 23 B T$.

over rolling land, thro' pine timber
 47.00 cross gulch, 25 lks. wide, course $S 30^{\circ} E$ bro. N.W. ascend very broken, rocky slope, thro' brush

49
2. 225
BOOK 1908

Resurvey of portions of Subdivision of Tp. 17 N, 187 W.

55.00	leave pine timber
60.00	gulch is 150 ft. w. ascend steep rocky, brushy mountain slope
79.95	Fell on Cor. stone of secs 13-14-23 and 24 as previously set.
80.00	Set a temp. sec. cor. point, whence the cor. of secs 13-24 on the East bdy. of the Tp. bears $N 89^{\circ} 59' E$, being visible across an intervening valley.
10.99	$N 0^{\circ} 45' E$, from the S. E. cor. of the Baca Grant, on the easterly boundary over rocky easterly side hills, gradually descending, thro' pine timber 31 M. Cor. A malpais stone, marked and witnessed as called for by the Surveyor General
3.20	$N 2^{\circ} 24' E$, along easterly bdy. of the Land Grant. cross gulch, 20 lks. wide course S E bds $N 30^{\circ} W$. ascend rocky slope
15.00	ascend steep rocky slope
33.63	Intersect a N and S line between secs 23 and 24 at a point $S 0^{\circ} 1' E$, 78 lks. from the temp. sec. cor. set above.
33.63	Set temp. C.C. point.
34.42	Intersect an E and W line between secs 13 and 24 at a point 4 lks. $N 89^{\circ} 59' E$ from the temp. sec. cor. of secs 13-14-23 and 24. February, 18, 1907, I set off $11^{\circ} 48'$

see p. 38
subs. 3177 N 187 W.

see p. 37
subs. 3177 N 187 W.

226 3.50
BOOK 1908

Resurvey of portions of
Subdivision of Twp. 17 N, R 7 W.

chains

- on the decl. arc and, at 12^h 14^m by my watch which is correct l. m. t. for the 105th meridian, observe the sun on the meridian and obtain on the lat. arc the reading 34° 52' which agrees closely with other data.
- 34.42 Set a temp. C. C. point.
- 41.35 top of mountain and over rolling top
- 44.00 descend steep rocky slope, scattered brush
- 50.00 center of hollow, at bottom of slope ascend opposite slope
- 65.00 top of mountain and over rolling top
- 70.00 descend — brushy slope
- 79.00 bottom, ascend gradually
- 80.08 30 Mile Cor. of Baca Land Grant.
A malapi stone 26 x 14 x 10 ins set on small end about 4" in the ground and surrounded by stones. B build mon. more firmly around the cor.
A pine, 24" diam, the original bearing tree, brs. S 8°-25' W, 34 1/2 lbs, marked 30 M B L V.
A juniper, 10" diam. brs. S 76°-32' W, 152 lbs. marked 30 M B L V B T.
A juniper, 14" diam. brs. N 12°-16' W 84 lbs. marked 30 M B L V B T.
I return to the C. C. on the line between sec's 23 and 24, and at the temp. C. C. point I set a malpais stone 24 x 10 x 10 ins, 18 lbs.

Resurvey of portions of
Subdivision of Tp. 17 N, R 7 W.

chains

in the ground, for C. C. cor. marked
C.C. on S face, BLV on W face
and one groove on E face and
raised a mon. of stones $2\frac{1}{2}$ ft. base by $1\frac{1}{2}$ ft.
high S of cor.

A 9" limb of juniper tree, brs. $S 73^{\circ} 54' E$, 83 lbs.
marked CCT 17 N R 7 W S 24 BT.

No other bearings available.

At the temp. C.C. point on the line bet. sec's
13 and 24, I set -

A malpais stone, $28 \times 9 \times 6$ ins., ²¹ 20 ins
in the ground, for a C.C., marked
CC on E face, BLV on W face and
three grooves on S face and raised
a mon. of stones $2\frac{1}{2}$ ' base by $1\frac{1}{2}$ ' high to
the E.

A 9" limb of juniper tree, brs $S 36^{\circ} 49' E$, 127 $\frac{1}{2}$
lbs. marked CCT 17 N R 7 W S 24 BT.

No other bearings available.

February 18th 1907.

February 19th, 1907. - Sky was overcast
last night, therefore no observation on Pole
star could be made.

At 8^h 00^m l. m. 4, I set off $34^{\circ} 5'$ on the
lat. arc and $11^{\circ} 29' S$ on the decl. arc and
determine a meridian with the solar at
the cor. of sec's 23-24-25 and 26 -

Thence I run

228
5-52

BOOK 1908

see P. 16
map 117 M
T17N
R7W

Resurvey of portions of
Subdivision of T17N, R7W

- chain
- N 89°-55' W, between sec's 23 and 26
descend gradually,
- 6.18 Cross Conger's rail fence, brs S 33°-15' W and N 17°-40' E
300' then N 40° E
- 6.47 Cross Campwood - Walnut Creek wagon road brs. along fence.
- 12.50 Cross Pine Creek, 60 lks. wide, course S 15° W 500 ft.
then W and brs. N 15° E.
- 14.76 Cross wire fence of Wm Martin's pasture brs
S 19°-10' W to Corral about 500' and N 19° E to S. E.
Cor. of Baca Grant.
over level bottom land, pine timber all
cut for lumber
- 19.50 Site of old saw mill, (Clark + Sherman) brs.
S 3°-50' W about 700 ft. Corral bears
S 20°-15' E 350 ft. ±.
- 38.00 ascend rocky slope
- 40.01 Fell 7 1/2 lks. N. of original 1/4 sec. cor.
Set a temp. ¹⁴ point. - Pine creek 500' ± S.
ascend broken slope thro' scattered pines
- 51.00 top and descend, stony and rough
thro. Pine timber, scattered,
- 55.00 cross gulch, 5 lks. wide, course S 80° E 600' to Pine
Creek and brs. N. -
ascend rocky slope
- 61.00 top of hill and descend
- 73.00 cross small gulch, 5 lks wide, course S brs. N.
ascend rocky slope
- 75.50 top - in pine timber

Resurvey of portions of
Subdivision of T17N, R7W.

Chains

descend gradually thro' dense
brush

- 80.04 Fall on original Sec. Cor. of Sec's 22-23-26 and 27
I return to temp. $\frac{1}{4}$ point, and at
1 lb. west of the same,
I set original $\frac{1}{4}$ cor. stone, a malpais,
20 x 9 x 6 ins, 15 ins. in the ground, chiseled
 $\frac{1}{4}$ on N face and raised a mound of stones
2 $\frac{1}{2}$ ' base by 1 $\frac{1}{2}$ ' high N of cor.
A pine, 10" diam. brs N 17° 58' E, 89 lbs.
marked $\frac{1}{4}$ S 23 B T.
A pine, 9" diam. brs S 36° 13' W, 37 lbs.
marked $\frac{1}{4}$ S 26 B T.

see P. 18
supplemental
notes.

- N 0° - 1' W, between sec's 22 and 23 from
the cor. of sec's 22-23-26 and 27
ascend rocky slope, thro, scattered brush
12.00 top and descend gradually scattered
brush and junipers
22.00 descend steep rocky slope thro' dense
oak brush
26.00 cross gulch, 15 lbs. wide, course S.W brs N.E.
ascend steep rocky slope thro' dense
greasewood brush
35.67 Fall 5 lbs. W of original C.C.
35.78 Intersect S'tly bdy. of Baca Land Grant.
Set the original C.C. stone at this point,
viz: a malpais stone, 17 x 11 x 5 ins, 12 ins.
in the ground, marked C C on S, B L V
on N and 2 grooves on E and 4
grooves on W faces and raised
a mound of stone 2 $\frac{1}{2}$ ft. base 1 $\frac{1}{2}$ ft. high

Resurvey of portions of 230
 Subdivision of Tp. 17 N, R. 7 W. 54

BOOK 1908

chains

S of cor.
 A 15" diam. leaning juniper, bears S 10°-50' E
 60.5 lks. marked CCT 17 N R 7 W S 23 B T.
 No other bearings available

9.23 S 89°-41' E, along S. bdy. of Baca Grant.
 descend steep, rocky slope thro' dense brush
 To 32 M Cor. of the Baca Land Grant. pub's

see P. 39
 17 m
 27 W

69.30 S 89°-02' E, along S bdy. of Grant -
 To S. E. Cor. of the Baca Land Grant. pub's

see P. 38
 17 m
 27 W

February 19th 1907, at my station at
 the Paul Wrights Ranch, at 9^h 26^m. p. m.
 by my watch, which 2^m. fast of local mean time I
 observe Polaris at Western elongation in accordance
 with instructions in the manual, and mark the point
 in the line thus determined by a tack driven in a
 wooden peg set in the ground 3 1/2 chis (no
 greater distance could be obtained) north of my
 station. February 19th 1907.

February 20th 1907. At 8^h 00^m a. m. I lay
 off the azimuth of Polaris 1°-27' to the East, and mark
 the meridian thus determined by a tack in a stake set
 in the ground 3 1/2 chis. N. of my station.
 At 8^h 30^m l. m. t. I set off 34°-51 1/2' on the lat.
 arc. and 11°-7 1/2' S on the decl. arc and determine
 a meridian with the solar which falls .03 ft.
 W of the meridian established by Polaris. This
 falling is about 1/2' of arc which I deem
 satisfactory. At 1^h. 00^m p. m. l. m. t. I set
 off 34°-51 1/2' on the lat. arc and 11°-4 1/2' S

8.
55

231

BOOK

1908

Resurvey of portions of

Subdivision of Tps. 17 N R 7 W.

chains

on the decl. arc and determine a meridian with the solar which falls .01 ft. E of the Polaris meridian and therefore consider the adjustments of the instrument satisfactory.

see page 11
subs. 17 N R 7 W.

From the C.C. of the sec. line bet. secs 13 and 24 at the E. bdy. of the Baca Land Grant, I run N 89° 59' E, in a direct line to the cor of Secs 13 and 24 on the E. bdy. of the Tp.

descend gradually over stony surface

0.74 cross wire fence of Grant to N & S

5.00 descend more steeply and thro' brush

22.00 descend more gradually

27.40 Cross Pine Creek, 40 lks. wide course S 20° W, brs. N 25° 20' E. over gradually rising ground

30.90 Cross Camp Wood - Walnut Creek road, brs. N 28° 20' E + S 22° 40' W through young pine timber, oaks & juniper.

39.83 Fall 9 lks. S of 1/4 cor. as originally set.

I reestablish this cor. 4 lks. to the W and 9 lks. S, making 40 chains for the Easterly 1/4 sec. The original distance having been 39.96 chains. Therefore at

39.79 I set the original 1/4 cor. stone, a granite stone, 15 x 7 x 6 ins. 10 ins. in the ground, chiseled 1/4 on N face. an pine, 10" diam. brs. N 12° 50' E, 33.5 lks. marked 1/4 S 13 B T.

An oak, 8" diam. brs. S 37° 52' E, 83 lks. marked 1/4 S 24 B T.

February 20th 1907.

FINAL OATHS OF DEPUTY SURVEYOR AND HIS ASSISTANTS.

232
50

LIST OF NAMES.

BOOK 1908

A list of the names of the individuals employed by A. B. Mader

....., United States Deputy Surveyor, to assist in running, measuring, and marking the lines and corners described in the foregoing field notes of the survey of ^{Re} portions of the subdivision of Tp. 17 N R. 7 W, G. v. S. R. M.

showing the respective capacities in which they acted:

R. H. Ferguson....., Chainman.

W. C. Denny and P. H. Wright....., Chainman.

....., Moundman.

....., Moundman.

....., Axman.

R. H. Ferguson....., Axman.

....., Flagman.

FINAL OATH OF ASSISTANTS.

We hereby certify that we assisted A. B. Mader

....., United States Deputy Surveyor, in surveying all those parts or portions of the subdivisions of Tp. 17 N, R. 7 W, and Base float N^o 5, Boundaries,

..... of the Gila and Salt River Base and meridian, Territory of Arizona, which are represented in the foregoing field notes as having been surveyed by him and under his direction; and that said survey has been in all respects, to the best of our knowledge and belief, well and faithfully surveyed, and the corner monuments established, according to the instructions furnished by the United States Surveyor General for Arizona.

R. H. Ferguson....., Flagman and Chainman.

W. C. Denny....., Chainman.

P. H. Wright....., Chainman.

~~Moundman~~

....., Moundman.

....., Axman.

....., Axman.

R. H. Ferguson....., Flagman.

Subscribed and sworn to before me this 20th day of February 1907



A. B. Mader
U. S. Dep. Surveyor

57233
BOOK 1908

FINAL OATH OF UNITED STATES DEPUTY SURVEYOR.

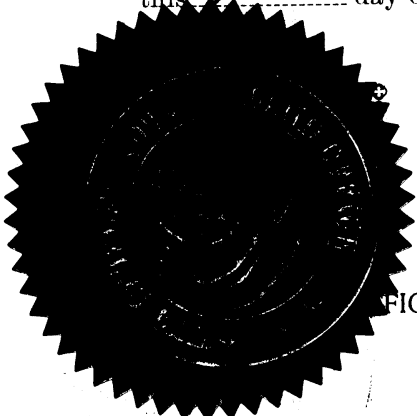
I, Arthur B. Mader, United States Deputy Surveyor, do solemnly swear that, in pursuance of a contract received from Sam F. S. Ingalls United States Surveyor General for Arizona, bearing date of the 26 day of May 1905, 189 , I have well, faithfully, and truly, in my own proper person, and in strict conformity with the instructions furnished by the United States Surveyor General for Arizona, the Manual of Surveying Instructions, and the laws of the United States, surveyed all those parts or portions of Tps 16 N R 7 W and Tps 17 N R 6 W and a resurvey of portions of T 17 N R 7 W

of the Gila and Salt River Base and meridian, in the Territory of Arizona, which are represented in the foregoing field notes as having been surveyed by me, and under my direction; and I do further solemnly swear that all the corners of said survey have been established and perpetuated in strict accordance with the Manual of Surveying Instructions, and the special written instructions of the United States Surveyor General for Arizona and in the specific manner described in the field notes, and that the foregoing are the original field notes of such survey; and should any fraud be detected, I will suffer the penalty of perjury under the provisions of an Act of Congress approved August 8, 1846.

Arthur B. Mader
United States Deputy Surveyor.

Subscribed by said Arthur B. Mader and sworn to before me
this 1st day of March 1907

Chas. Robinson
Receiver U.S. Land Office



APPROVAL.

OFFICE OF THE UNITED STATES SURVEYOR GENERAL,

Phoenix, AZ, March 30th 189 1907

The foregoing field notes of the survey of portions of T 17 N R 7 W of the Gila and Salt River Base and Meridian, in the territory of Arizona

executed by Arthur B. Mader, U.S. deputy surveyor under his contract No. 132, dated May 26, 1905, 189 , having been critically examined, and the necessary corrections and explanations made, the said field notes, and the surveys they describe, are hereby approved.

Frank A. Ingalls
United States Surveyor General.

I certify that the foregoing transcript of the field notes of the above-described surveys in
has been correctly copied from the original notes on file in this office.

United States Surveyor General.

FOR FINAL OATHS OF DEPUTY SURVEYOR AND HIS ASSISTANTS.

See Subdivision of Tp. 16 N, Rg. 7 W.

LIST OF NAMES.

BOOK 1908

A list of the names of the individuals employed by _____

_____, United States Deputy Surveyor, to assist in running, measuring, and marking the lines and corners described in the foregoing field notes of the survey of _____

showing the respective capacities in which they acted:

- _____, Chainman.
- _____, Chainman.
- _____, Moundman.
- _____, Moundman.
- _____, Axman.
- _____, Axman.
- _____, Flagman.

FINAL OATH OF ASSISTANTS.

We hereby certify that we assisted _____

_____, United States Deputy Surveyor, in surveying all those parts or portions of the _____

_____ of the _____

_____ meridian, _____ of _____, which are represented in the foregoing field notes as having been surveyed by him and under his direction; and that said survey has been in all respects, to the best of our knowledge and belief, well and faithfully surveyed, and the corner monuments established, according to the instructions furnished by the United States Surveyor General for _____

- _____, Chainman.
- _____, Chainman.
- _____, Moundman.
- _____, Moundman.
- _____, Axman.
- _____, Axman.
- _____, Flagman.

Subscribed and sworn to before me this _____ day of _____, 189 _____



5734
BOOK FOR 1908

FINAL OATH OF UNITED STATES DEPUTY SURVEYOR.

See Subdivision of Tp. 16 N, Rg. 7 W.

I, _____, United States Deputy Surveyor, do solemnly swear that, in pursuance of a contract received from _____, United States Surveyor General for _____, bearing date of the _____ day of _____, 189 _____, I have well, faithfully, and truly, in my own proper person, and in strict conformity with the instructions furnished by the United States Surveyor General for _____, the Manual of Surveying Instructions, and the laws of the United States, surveyed all those parts or portions of _____

_____ of the _____ meridian, in the _____ of _____, which are represented in the foregoing field notes as having been surveyed by me, and under my direction; and I do further solemnly swear that all the corners of said survey have been established and perpetuated in strict accordance with the Manual of Surveying Instructions, and the special written instructions of the United States Surveyor General for _____ and in the specific manner described in the field notes, and that the foregoing are the original field notes of such survey; and should any fraud be detected, I will suffer the penalty of perjury under the provisions of an Act of Congress approved August 8, 1846.

United States Deputy Surveyor.

Subscribed by said _____, and sworn to before me }
this _____ day of _____, 189 _____



APPROVAL.

OFFICE OF THE UNITED STATES SURVEYOR GENERAL,

Phoenix Ar. Nov 23rd 1896

The foregoing field notes of the survey of the subdivisions of T. 16 N. R. 7 W. and the retracement of the fractional east and south boundaries of the Baca Grant N. 5 of the Gila and Salt River Base and Meridian in the Territory of Arizona

executed by A. B. Mader Deputy Surveyor under his contract No. 132, dated May 26, 1905, 189 _____, having been critically examined, and the necessary corrections and explanations made, the said field notes, and the surveys they describe, are hereby approved.

Frank S. Ingalls
United States Surveyor General.

I certify that the foregoing transcript of the field notes of the above-described surveys in _____, has been correctly copied from the original notes on file in this office.

United States Surveyor General.