

Duplicates

BOOK 1948

145
1

Navajo Indian Reservation

1948

1948

1948

FIELD NOTES

1948

OF THE SURVEY OF THE

Subdivision lines of

~~MERIDIAN LINES~~

~~OF~~

Township H, 3 & 2 North, Range 5 West.

Navajo Special
of the ~~Gila and Salt River~~ Base and Meridian,

ARIZONA,

1948

By U. S. Deputy Surveyor,

Under contract dated April 29 - 1869, ~~188~~

May 4 - 1870

Survey commenced Nov. 3 - 1869, ~~188~~

Survey Completed Nov. 7 - 1869, ~~188~~

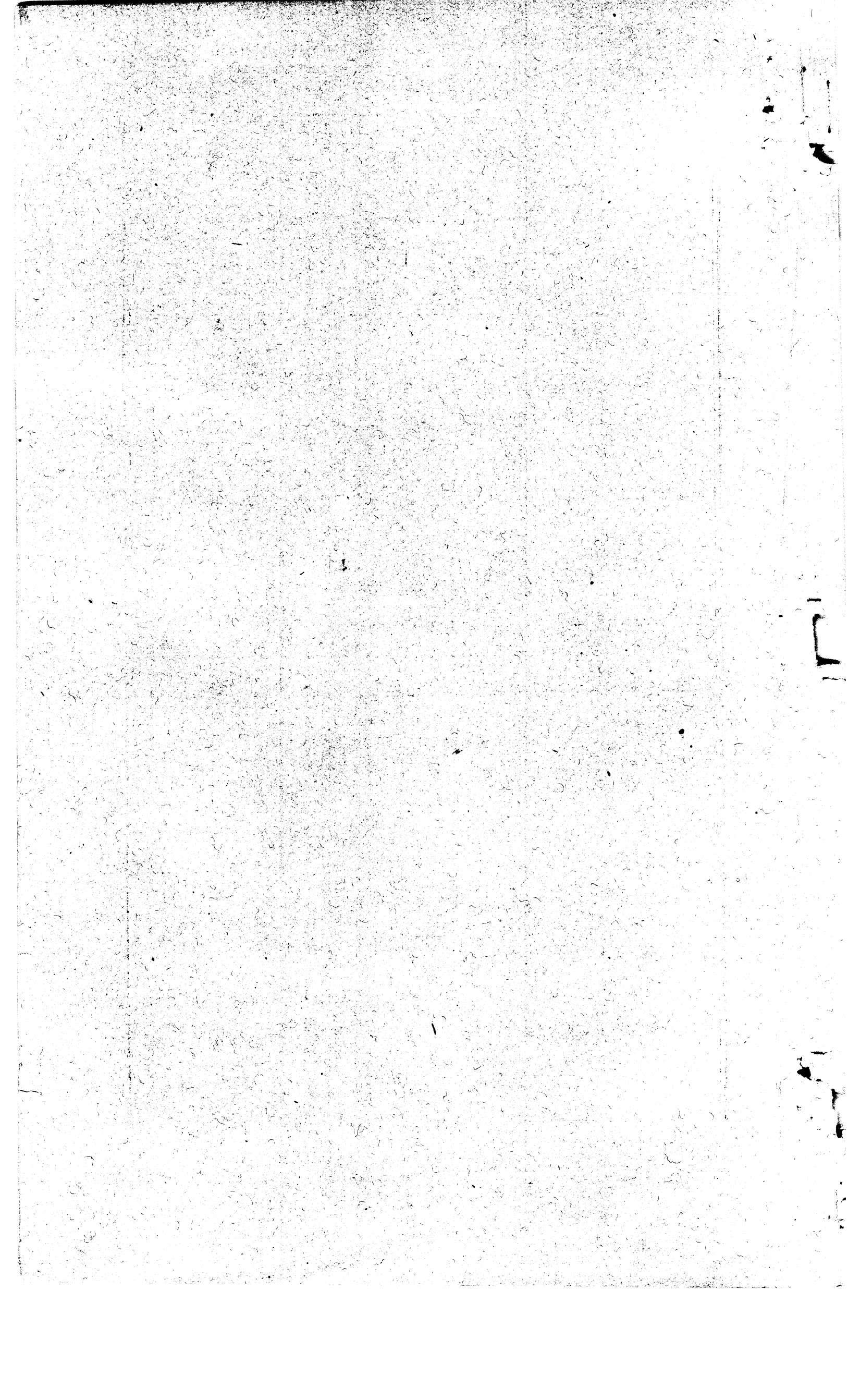
1948

1948

1948

1948

1948



BOOK 1948

F I E L D N O T E S

_____ of the _____

Subdivision Lines of Townships 4, 3, and 2 North, Range 5 West
_____ of the _____
Navajo Special Meridian, in the Territory of New Mexico (and
Arizona), surveyed under the directions of Hon. Jos. S. Wil-
son, Commissioner of the General Land Office, bearing date
Washington D. C., April 29th, 1869, and subsequent Special
Instructions dated May 4th, 1870. _____

*****ooOoo*****

*Recd from U.S. Sur-Gen
New Mexico, Nov. 26-1902.*

Commenced November, 3rd, 1869 and completed,
November 7th, 1869. _____

Names of Assistants.

George H. Pradt,Compassman.

Charles C. Morton, }
Adam Whisker. }Chainmen.

Alaxender Douglass, }
Joseph Fierheller. }Cornermen.

Measuring Chain compared with Standard as per instructions.

I N D E X.

Subdivision T. 3 N. R. 5 W.

6	23	5	17	4	14	3	8	2	1
23	22	16	14	8	7				
7	22	8	16	9	13	10	8	11	12
22	21	15	10						
18	21	17	15	16	12	15			
20	20	11							
19	20	21	22						
19	19	10							
30	18	29	10	28	Subd'n of				
15	17	9	Twp. 3 N.						
31	17	32	9	33	R. 5 W.				

Subdn. T. 2 N. R. 5 W.

6	32	5	4						
32	32	28							
7	31	8	28	9	10				
31	30	28							
18	30	17	27	16					
29	27	27							
19	26	20	21						
26	26								
30	25	29	28	Subd'n					
25				T. 2 N.					
31	32	R. 5 W.							

of Naajo Special Meridian in N. Mex. & Arizona.

6	5	Subdivision of							
7	8	Twp. 4 North							
18	17	Range 5 W. of							
19	20	the Navajo Spe-							
30	29	cial Meridian, in							
4	3	N. Mex. & Arizona.							
31	32	3						

Field Notes of the Subdivisional Lines of-
Fractional Township 4 North, Range 5 West of the Navajo

148 3

Chains.

Special Meridian.

BOOK 1948

Commenced and completed Nov. 3, 1869.

North between secs. 32 and 33.

Var. 13° 55' East.

40.00 Set sandstone 16x12x3 for $\frac{1}{4}$ sec. cor. as per instructions.

80.00 Set sandstone 14x12x3, marked as per instructions for the corner to sections 28, 29, 32 and 33.

Surface rolling.

Soil 2nd rate.

Scattering piñon and cedar 3rd rate.

Impracticable to project line further by reason of mountainous country.

North between secs. 31 and 32.

Var. 13° 55' E.

40.00 Set sandstone 16x10x8 for $\frac{1}{4}$ sec. cor. as per instructions.

80.00 Deposited marked stone, set charred post, marked, built mound and dug pits as per instructions for the corner to secs. 29, 30, 31 and 32.

Surface rolling.

Scattering piñon and cedar, 3rd rate.

Soil 2nd rate.

East on random line between secs. 29 and 32.

Var. 13° 55' East.

40.00 Set temporary $\frac{1}{4}$ sec. corner.

80.10 Intersect sec. line 20 lks. south of corner to secs. 28, 29, 32 & 33.

4
149
BOOK 1948

Chains.

Then ~~na~~ S. 89° 51' W. on true line,.
Var. 13° 55' East.

40.05 Set sandstone 18x12x5 for 1/4 sec. corner, as per instructions.

80.10 Corner to secs. 29, 30, 31 & 32.

Surface rolling.

Scattering piñon and cedar, 3rd rate.

Soil 2nd rate.

West on random ~~line~~ between secs. 30 and 31.

Var. 13° 55' E.

40.00 Set temporary 1/4 sec. corner.

79.60 Intersect Range Line 12 lks. south of corner to secs. 25, 30, 31 and 36.

Then S. 89° 55' E. on true line.

Var. 13° 55' East.

39.60 Set sandstone 14x12x3 for 1/4 sec. corner, as per instructions.

79.60 Corner to secs. 29, 30, 31 and 32.

Surface rolling.

Scattering piñon and cedar, 3rd rate.

Soil 2nd rate.

North between secs. 29 and 30.

Var. 13° 55' E.

40.00 Set charred post and built mound for 1/4 sec. corner as per instructions.

80.00 Set sandstone 16x12x4 marked as per instructions for the corner to secs. 19, 20, 29 and 30.

Surface rolling.

Scattering piñon and cedar 3rd rate.

Soil 2nd rate.

Chains.

BOOK 1948

West on random between secs. 19 and 30.
 Var. 13° 55' East.

- 40.00 Set temporary $\frac{1}{4}$ sec. corner.
- 79.80 Intersect Range line 18 lks. south of corner to
secs. 19, 24, 25, and 30.
 Then S. 89° 52' E. on true line.
 Var. 13° 55' East.
- 39.80 Set sandstone 16x10x4, for $\frac{1}{4}$ sec. corner, as
per instructions.
- 79.80 Corner to secs. 19, 20, 29 & 30.
 Surface level.
 Scattering piñon and cedar, 3d rate.
 Soil 1st rate.

North between secs. 19 and 20.
 Var. 13° 55' East.

- 40.00 Set sandstone 15x12x3 for $\frac{1}{4}$ sec. cor. as per
instructions.
- 80.00 Set sandstone 18x16x6 marked as per instruc-
tions for the corner to secs. 17, 18, 19 and 20.
 Surface rolling.
 Scattering piñon and cedar, 3rd. rate.
 Soil 2nd rate.

West on random between secs. 18 and 19.
 Var. 13° 55' East.

- 40.00 Set temporary $\frac{1}{4}$ sec. corner.
- 79.40 Intersect Range line 8 lks. North of corner to
secs. 13, 18, 19 and 24.
 Then N. 89° 57' E.
 on true line with the same variation.
- 39.40 Set sandstone 12x12x8 for $\frac{1}{4}$ sec. corner, as
per instructions.

6 151

Field Notes of the Subdivisional Lines of- Meridian.
Fractional Township 4 North, Range 5 West of the N. S.

BOOK 1948

Chains
79.40

Corner to secs. 17, 18, 19 and 20.
Surface rolling.
Scattering piñon and cedar, 3rd rate.
Soil 2nd rate.

GENERAL DESCRIPTION OF FRACTIONAL TOWNSHIP
4 NORTH, RANGE 5 WEST, OF THE NAVAJO SPECIAL
MERIDIAN:

The land in this Township is generally
scatteringly covered with cedar and piñon, 3rd
rate.

The surface is mostly rolling and soil 2nd
rate. It is well adapted to farming and grazing
purposes.

TOWNSHIP 3 NORTH. RANGE 5 WEST.

Chains.	
	<p>Commenced November 4th, and Completed November 6th, 1869.</p> <p>Measuring chain compared with Standard and found correct.</p> <p>From corner to secs. 1, 2, 35 and 36.</p> <p>South on true line between secs. 1 and 2.</p> <p>Var. 13° 42' East.</p>
40.00	Set charred post and built mound and dug pits for $\frac{1}{4}$ sec. corner as per instructions.
51.00	Trail, bears N.E. and S.W.
76.60	Trail, bears N.N.E. and S.S.W.
80.00	<p>Deposited marked stone, set charred post, marked, built mound and dug pits as per instructions for the corner to secs. 1, 2, 11 and 12.</p> <p>Surface rolling.</p> <p>Soil 2nd rate prairie.</p> <hr/> <p>East on true line between secs. 1 and 12.</p> <p>Var. 13° 42' E.</p>
16. 50	<p>Foot of bluff, bears N. and South.</p> <p>Impracticable to project line further, therefore set sandstone 16x12x7 marked "W.C. for Witness Corner.</p> <p>Surface rolling.</p> <p>Soil 2nd rate. Prairie.</p> <hr/> <p>South on true line between secs. 11 and 12.</p> <p>Var. 13° 42' E.</p>
40.00	Set sandstone 14x12x3 for $\frac{1}{4}$ sec. corner as per instructions.
75.14	Bluff, bears N.E. and S.W. Impracticable to

253 8 1948
BOOK

Field Notes of the Subdivisional Lines of-
Township 3 North Range 5 West of the Navajo Special Mer..

Chains.

proceed further, therefore set as witness corner
sandstone 14x10x8, marked "W. C."
Surface rolling.
Prairie. Soil 2nd rate.

From corner to secs. 1, 2, 11 and 12,
West on true line between secs. 2 and
11.

Var. 13° 42' East.

40.00 Set charred post and built mound and dug pits
for 1/4 sec.cor. as per instructions.

80.00 Set sandstone 16x10x4 marked as per instruc-
tions, for corner to secs. 2, 3, 10 and 11.
Surface rolling.
Scattering piñon and cedar, 3rd rate.
Soil 2nd rate.

South on true line between secs. 10
and 11.

Var. 13° 42' East.

40.00 Set sandstone 20x12x3 for 1/4 sec. corner, as per
instructions.

43.50 Trail bears N. E. and S. W.

80.00 Set sandstone 16x10x4, marked as per instruc-
tions for the corner to secs. 10, 11, 14 and
15.
Surface rolling.
Scattering piñon and cedar, 3rd rate.
Soil 2nd rate.

North on random line between secs.
2 and 3.

Chains.

Var. 13° 42' East.

BOOK 1948

- 40.00 Set temporary $\frac{1}{4}$ sec. corner.
- 46.50 Leave scattering timber, bears E. and W.
- 80.00 Intersect Township line 18 lks. East of corner to secs. 2, 3, 34 and 35.

Then S. 8' E. on true line.

Var. 13° 42' E.

- 40.00 Set sandstone 16x10x6 for $\frac{1}{4}$ sec. corner as per instructions.
- 80.00 Corner to secs. 2, 3, 10 & 11.
Surface rolling.
Scattering piñon and cedar 3rd rate.
Soil 2nd rate.

North between secs. 32 and 33.

Var. 13° 42' E.

- 40.00 Set sandstone 18x10x6 for $\frac{1}{4}$ sec. corner, as per instructions.
- 80.00 Set sandstone 20x12x4, marked as per instructions for the corner to secs. 28, 29, 32 and 33.
Surface rolling. Soil 2nd rate.
Scattering pine, piñon and cedar 3rd rate.

East on true line between secs. 28 and 33.

Var. 13° 42' East.

- 14.00 Foot of bluff, bears North and South.
- 19.00 Summit of same.
- 20.10 Begin descent of same.
- 25.00 Foot of same.
- 25.50 Trail, bears north and south.
- 37.00 Trail bears North and south.
- 40.00 Set sandstone 16x14x3 for $\frac{1}{4}$ sec. corner as per

Chains.

instructions.

42.20 Foot of bluff 200 ft. high, bears north and south. Impracticable to project line any further.

Surface rolling.

Scattering piñon and cedar, 3rd rate.

Soil 2nd rate.

North between secs. 28 and 29.

Var. 13° 42' E.

40.00 Set charred post, built mound and dug pits as per instructions.

58.50 Trail bears N. E. and S. W.

80.00 Set sandstone 18x16x3 marked as per instructions, for the corner to secs. 20, 21, 28 and 29.

Surface rolling.

Soil 2nd rate.

Scattering piñon and cedar 3rd rate.

East on true line between secs. 21 and 28.

Var. 13° 42' East.

20.38 Sandstone bluff 80 ft. high, bears north and south.

40.00 Set sandstone 18x10x8 for $\frac{1}{4}$ sec. corner as per instructions.

50.10 Leave bluff.

56.50 Trail, bears north and south.

56.57 Foot of bluff, bears north and south. Impracticable to project line further; therefore set as witness corner, sandstone 16x12x7 marked "W.C."

Surface rolling.

Chains.

Scattering piñon and cedar, 3rd rate.
Soil 3rd rate.

North between secs. 20 and 21.

Var. 13° 42' East.

19.00 Descend hill, bears east and west.

20.00 Leave same.

40.00 Set charred post and built mound and dug pits
as per instructions.

80.00 Deposited marked stone, set charred post, mark-
ed, built mound and dug pits as per instruc-
tions for the corner to secs. 16, 17, 20 and
21.

Surface rolling. Prairie.

Soil 2nd rate.

East on true line,

between sections 16 and 21.

Var. 13° 42' E.

33.60 Leave timber, bears North and South.

40.00 Set sandstone 20x12x5 for $\frac{1}{4}$ sec. corner as
per instructions.

77.50 Trail bears north and south.

80.00 Set sandstone 16x14x3 marked as per instruc-
tions for the corner to secs. 15, 16, 21 and
22.

Surface rolling, mostly prairie.

Soil 2nd rate.

Chains.

South on true line,

between secs. 21 and 22.

Var. $13^{\circ} 42'$ East.

- 30.50 Red sandstone bluff, almost perpendicular,
bears east and west.
Impracticable to project line further, there-
fore set as witness corner, sandstone 16x8x8
marked "W. C."
Surface level. Prairie.
Soil 2nd rate.
-

North between secs. 15 and 16.

Var. $13^{\circ} 42'$ East.

- 39.40 Trail, bears N. E. and S. W.
- 4 0.00 Set charred post, built mound and dug pits
for $\frac{1}{4}$ sec. corner as per instructions.
- 80.00 Deposited marked stone, set charred post,
marked, built mound and dug pits as per in-
structions, for ^{the} corner to secs. 9, 10, 15
and 16.
Surface rolling. Prairie.
Soil 2nd rate.
-

East on random between secs. 10 and 15.

Var. $13^{\circ} 45'$ E.

- 40.00 Set temporary $\frac{1}{4}$ sec. corner.

Chains.

BOOK 1948

61.00 Trail, bears north and south.

80.16 Intersect sec. line 12 lks. south of corner
to secs. 10, 11, 14 and 15.

Then S. 89° 55' W. on true line,

Var. 13° 45' East.

40.08 Set sandstone 18x10x8 for $\frac{1}{4}$ sec. corner as
per instructions.

80.16 Corner to sections 9, 10, 15 and 16.

Surface rolling. Prairie.

Soil 2nd rate.

North between secs. 9 and 10.

Var. 13° 45' East.

40.00 Set sandstone 15x11x4 for $\frac{1}{4}$ sec. corner as
per instructions.

76.00 Enter timber, bears E. and West.

80.00 Deposited marked stone, set charred post,
marked, built mound and dug pits as per in-
structions, for ^{the} corner to secs. 3, 4, 9 and
10.

Surface rolling, mostly prairie.

Soil 1st rate.

Chains.

East on random between secs. 3 and 10

Var. $13^{\circ} 42'$ E.

28.40 Leave timber, bears north and south.

40.00 Set temporary $\frac{1}{4}$ sec. corner.80.08 Intersect sec. line 10 lks. south of corner
to secs. 2, 3, 10 and 11.Then S. $89^{\circ} 56'$ W. on true line,
Var. $13^{\circ} 42'$ East.40.04 Set sandstone 16x12x3 for $\frac{1}{4}$ sec. corner as
per instructions.

80.08 Corner to secs. 3, 4, 9 and 10.

Surface rolling, partly prairie.

Soil 2nd rate.

 North on random line, between secs.
3 and 4.
Var. $13^{\circ} 42'$ East.40.00 Set temporary $\frac{1}{4}$ sec. corner80.10 Intersect Township line, 12 links east of
corner to secs. 3, 4, 33 and 34.Then S. $5'$ E. on true line with
same variation.

Field Notes of the Subdivision Lines of Township 3
North, Range 5 West of the Navajo Special Mer.

Chains.

40.05 Set sandstone 14x12x3 for $\frac{1}{4}$ sec. corner as per **BOOK** 1948 instructions.

80.10 Corner to secs. 3, 4, 9 and 10.
Surface rolling. Prairie.
Soil 2nd rate.

North between secs. 16 and 17.

Var. 13° 42' East.

17.80 Spring branch 10 lks. wide, course west.

31.00 Spring branch, 10 lks. wide, course W.

40.00 Set charred post, built mound and dug pits as per instructions for $\frac{1}{4}$ sec. corner.

70.00 Trail bears N.W. and S.E.

80.00 Set sandstone 16x14x3 marked as per instructions for the corner to secs. 8, 9, 16 and 17.
Surface level. Prairie.
Soil 1st rate.

East on random between secs. 9 and 16

Var. 13° 42' E.

10.00 Enter piñon and cedar, bears north and south.

12.40 Foot of bluff.

35.20 Summit of same, bears N. and South.

40.00 Set temporary $\frac{1}{4}$ sec. corner.

49.00 Begin descent of bluff.

80.20 Intersect sec. line 8 lks. south of corner to secs. 9, 10, 15 and 16.

Then S. 89° 57' W. on true line with the same variation.

40.10 Set sandstone 16x14x8 for $\frac{1}{4}$ sec. corner as per instructions.

80.20 Corner to secs. 8, 9, 16 and 17.
Surface rolling.

Chains.

Scattering piñon and cedar 3rd rate.
Soil 2nd rate.

North between secs. 8 and 9.

Var. $13^{\circ} 42'$ East.

- 40.00 Set charred post, built mound and dug pits for
 $\frac{1}{4}$ sec. corner, as per instructions.
- 58.00 Ravine 28 lks. wide, course S.W.
65. 50 Ravine, course S.E.
- 67.00 Leave same.
- 80.00 Deposited marked stone, set charred post, marked,
built mound and dug pits as per instructions for
the corner to secs. 4, 5, 8 and 9.
Surface rolling. Prairie.
Soil 2nd rate.

East on random between secs. 4 and 9

Var. $13^{\circ} 42'$ East.

- 24.60 Enter timber, bears North and South.
- 35.00 Summit of hill, bears N. & South.
- 40.00 Set temporary $\frac{1}{4}$ sec. corner.
- 61.50 Leave timber, bears N. and south.
- 80.04 Intersect sec. line 16 lks. south of corner to
secs. 3, 4, 9 and 10.
Then S. $89^{\circ} 53'$ W. on true line with
the same variation.
- 40.02 Set sandstone 18x10x3 for $\frac{1}{4}$ sec. corner as per
instructions.
- 80.04 Corner to secs. 4, 5, 8 and 9.
Surface rolling, mostly prairie.
Soil 2nd rate.
-

Chains

North on random between secs. 4 and 5.

Var. 13° 42' E.

- 40.00 Set temporary $\frac{1}{4}$ sec. corner.
- 70.50 Enter scattering timber, bears E. & W.
- 79.94 Intersect Township line 20 lks. west of corner to secs. 4, 5, 32 and 33.

Then S.9' W. on true line

Var. 13° 42' E.

- 39.94 Set charred post dug pits and built mound for $\frac{1}{4}$ sec. corner, as per instructions.
- 79.94 Corner to secs. 4, 5, 8 and 9.
Surface rolling, mostly prairie.
Soil 2nd rate.

North between secs. 31 and 32.

Var. 13° 42' E.

- 10.00 Leave timber, bears N.W. and S.E.
- 12.50 Enter valley, bears N.W. and S.E.
- 40.00 Set charred post, dug pits and built mound for $\frac{1}{4}$ sec. corner as per instructions.
- 80.00 Deposited marked stone, set charred post, marked, built mound and dug pits as per instructions, for the corner to secs. 29, 30, 31 and 32.
Surface rolling, mostly prairie.
Soil 2nd rate.

East on random between secs. 29 and 32.

Var. 13° 42' East.

- 9.60 Trail, bears north and south.
- 18.50 Trail, bears north and south.
- 40.00 Set temporary $\frac{1}{4}$ sec. corner.
- 76.10 Dry bed of creek, 100 lks. wide, course south.

Field Notes of the Subdivision Lines of Township 3 North, Range 5 West, of the N.S.L.M.

Chains.

- 79.00 Trail, bears north and south.
- 79.78 Intersect sec. line 20 lks. south of corner to secs. 28, 29, 32 and 33.
Then S. 89° 51' W. on true line with the same variation.
- 39.89 Set charred post, built mound and dug pits as per instructions.
- 79.78 Corner to secs. 29, 30, 31 and 32.
Surface level. Prairie.
Soil 1st rate.

West on random between secs. 30 and 31.
Var. 13° 42' E.

- 23.00 Foot of hill and enter timber, North and South.
- 40.00 Set temporary 1/4 sec. corner.
- 79.04 Intersect Range line 8 lks. south of corner to secs. 25, 30, 31 and 36.
Then S. 89° 57' E. on true line with the same variation.
- 39.04 Set sandstone 18x12x10 for 1/4 sec. corner as per instructions.
- 79.04 Corner to secs. 29, 30, 31 & 32.
Surface rolling, partly prairie.
Soil 2nd rate.

North between secs. 29 and 30.
Var. 13° 45' E.

- 19.00 Hill, bears N.E.
- 22.50 Leave same.
- 40.00 Set sandstone 16x10x3 for 1/4 sec. cor. as per instructions.
- 55.20 Enter scattering timber, bears East and west.
- 80.00 Set sandstone 26x20x8, marked as per instruc-

Chains.

tions for the corner to secs. 19, 20, 29 and 30.

Surface rolling, prairie mostly.
Soil 2nd rate.

East on random between secs. 20 and 29.

Var. 13° 42' East.

- 9.00 Trail, bears north and south.
- 40.00 Set temporary $\frac{1}{4}$ sec. corner.
- 59.65 Dry bed of creek, 50 lks. wide, course south.
- 79.60 Intersect sec. line 12 lks south of corner to secs. 20, 21, 28 and 29.

Then S. 89° 55' W. on true line with the same variation.

- 39.80 Set charred post, built mound and dug pits for $\frac{1}{4}$ sec. cor. as per instructions.
- 79.60 Corner to secs. 19, 20, 29 and 30.
Surface rolling, mostly prairie.
Soil 2nd rate.

West on random between secs. 19 and 30.

Var. 13° 45' East.

- 40.00 Set temporary $\frac{1}{4}$ sec. corner.
- 79.26 Intersect Range line at corner to secs. 19, 24, 25 and 30.

Then East on true line.

Var. 13° 45' E.

- 39.26 Set sandstone 18x10x3 for $\frac{1}{4}$ sec. corner as per instructions.
- 79.26 Corner to secs. 19, 20, 29 & 30.
Surface rolling.

Chains.

Scattering piñon and cedar 3rd rate.
Soil 2nd rate.

North between secs. 19 and 20.

Var. $13^{\circ} 45'$ East.

- 3.00 Leave timber, bears East and West.
40.00 Set charred post dug pits and built mound for
 $\frac{1}{4}$ sec. corner as per instructions.
67.00 Trail bears N.W. and S.S.E.
80.00 Set sandstone 14x12x3 marked as per instruc-
tions for the corner to secs. 17, 18, 19 and 20.
Surface gently rolling. Prairie.
Soil 1st rate.
-

East on random between secs. 17 and
20.

Var. $13^{\circ} 42'$ E.

- 40.00 Set temporary $\frac{1}{4}$ sec. corner.
49.50 Dry bed of creek, 40 lks. wide, south.
53.50 Trail, bears N.W. and S.E.
80.10 Intersect sec. line at corner to secs. 16, 17,
20 and 21.

Then West on true line.

Var. $13^{\circ} 42'$ East.

- 40.05 Set charred post, built mound and dug pits as
per instructions for $\frac{1}{4}$ sec. corner.
80.10 Corner to secs. 17, 18, 19 and 20.
Surface level: Prairie.
Soil 1st rate.
-

West on random between secs. 18 and 19.

Var. $13^{\circ} 42'$ E.

Chains	
40.00	Set temporary $\frac{1}{4}$ sec. corner.
70.10	Dry bed of creek, 15 lks. wide, course South.
77.00	Ridge, bears North and South.
78.00	Enter timber.
79.20	Intersect Range line at corner to sections 13, 18, 19 and 24.
	Then East on true line. Var. $13^{\circ} 42' E.$
39.20	Set charred post, built mound and dug pits for $\frac{1}{4}$ sec. corner as per instructions.
79.20	Corner to secs. 17, 18, 19 and 20. Surface rolling. Prairie. Soil 1st rate.
	North between secs. 17 and 18. Var. $13^{\circ} 45' E.$
40.00	Set charred post, built mound and dug pits for $\frac{1}{4}$ sec. corner as per instructions.
72.00	Dry creek, 15 lks. wide, course W.
77.00	Foot of ridge, bears E. and West.
80.00	Set sandstone 18x14x4 marked as per instruc- tions, for the corner to secs. 7, 8, 17 and 18. Surface rolling. Prairie. Soil 2nd rate.
	East on random between secs. 8 and 17. Var. $13^{\circ} 43' East.$
40.00	Set temporary $\frac{1}{4}$ sec. corner.
70.00	Dry bed of creek, 1 chain wide, course south.
80.22	Intersect sec. line 12 links south of corner to sections 8, 9, 16 and 17.
40.06	Then S. $89^{\circ} 55'$ west on true line with the same variation.

722

Field Notes of the Subdivision Lines of Frac. Township
3 North, Range 5 West of the N. S. M.

Chains.

80.12 Corner to secs. 7, 8, 17 and 18.

Surface rolling. Prairie.

Soil 2nd rate.

West on random between secs. 7 and
18.

Var. 13° 45' East.

21.00 Trail bears North and South.

40.00 Set temporary $\frac{1}{4}$ sec. corner.79.08 Intersect Range line 10 lks. north of corner
to secs. 7, 12, 13 and 18.

Then N. 89° 56' E. on true line.

Var. 13° 45' East.

39.08 Set sandstone 18x10x4 for $\frac{1}{4}$ sec. corner as per
instructions.

79.08 Corner to secs. 7, 8, 17 and 18.

Surface rolling. Prairie.

Soil 2nd rate.

North between secs. 7 and 8.

Var. 13° 45' E.

13.50 Ridge bears east and west.

40.00 Set charred post, dug pits, and built mound for
 $\frac{1}{4}$ sec. corner as per instructions.80.00 Set sandstone 14x12x3 marked as per instructions,
for the corner to secs. 5, 6, 7, and 8.

Surface rolling. Prairie.

Soil 2nd rate.

East on random between secs. 5 and 8

Var. 13° 42' East.

40.00 Set temporary $\frac{1}{4}$ sec. corner.

70.25 Dry bed of creek, course south.

Chains.

- 73.00 Trail, bears north and south.
- 79.90 Intersect sec. line at corner to secs. 4, 5, 8 and 9.
- Then West on true line
Var. 13° 42' East.
- 39.95 Set charred post, built mound and dug pits for $\frac{1}{4}$ sec. corner as per instructions.
- 79.90 Corner to secs. 5, 6, 7 and 8.
Surface level. Prairie.
Soil 1st rate.

West on random between secs. 6 and 7.
Var. 13° 42' E.

- 11.20 Tail, bears N. and South.
- 40.00 Set temporary $\frac{1}{4}$ sec. corner.
- 70.00 Foot of hill and enter timber.
- 78.90 Intersect Range line 10 links North of corner to secs. 1, 6, 7 and 12.
- Then N. 89° 56' E. on true line.
Var. 13° 42' East.
- 38.90 Set sandstone, 14x12x3 for $\frac{1}{4}$ sec. corner as per instructions.
- 78.90 Corner to secs. 5, 6, 7 and 8.
Surface rolling, mostly prairie.
Soil 2nd rate.

North on random between secs. 5 and 6.
Var. 13° 42' East.

- 40.00 Set temporary $\frac{1}{4}$ sec. corner.
- 80.04 Intersect Township line 6 lks. west of corner to secs. 5, 6, 31 and 32.
- Then S. 3' W. on true line.
Var. 13° 42' East.

Chains.

40.04 Set sandstone 14x12x3 for 1/4 sec. corner as per instructions.

80.04 Corner to secs. 5, 6, 7 and 8.
Surface level. Prairie.
Soil 1st rate.

GENERAL DESCRIPTION OF FRACTIONAL TOWNSHIP 3
NORTH, RANGE 5 WEST OF THE NAVAJO SPECIAL ME-
RIDIAN.

The land in this Township is for the most part, generally rolling prairie, well adapted to either farming or grazing purposes.
Soil 2nd and 1st rate.

Commenced November 6th, and
Completed November 7th, 1869.

Measuring Chain compared with Standard and
found correct.

FIELD NOTES OF THE SUBDIVISION LINES OF FRACAL
TOWNSHIP 2 NORTH, R. 5 WEST OF THE N. S. M.

From corner to secs. 25, 30, 31 and 36,
East on true line between secs. 30
and 31.

Var. $13^{\circ} 40'$ East.

40.00 Set sandstone 14x12x3 for $\frac{1}{4}$ sec. corner as per
instructions.

60.20 Trail, bears north and south.

80.00 Set sandstone 16x12x4 marked as per instruc-
tions for the corner to secs. 29, 30, 31 and
32.

Surface broken.

Scattering piñon and cedar 3rd rate.

Soil 2nd rate.

North between secs. 29 and 30.

Var. $13^{\circ} 40'$ E.

27.50 Leave timber, bears N. W. and S. E.

40.00 Set charred post, built mound and dug pits for
 $\frac{1}{4}$ sec. corner as per instructions.

60.00 Trail, bears East and West.

80.00 Deposited marked stone, set charred post, mark-
ed, built mound and dug pits as per instructions,
for the corner to secs. 19, 20, 29 and 30.

Surface level, mostly prairie.

Soil 1st rate.

Chains.

East on true line between secs. 20 and 29

Var. $13^{\circ} 42' E.$

- 11.50 Trail bears North and South.
- 28.50 Enter timber, bears N. and South.
- 40.00 Set sandstone 14x12x3 for $\frac{1}{4}$ sec. corner as per instructions.
- 80.00 Set sandstone 20x16x4 marked as per instructions for the corner to secs. 20, 21, 28 and 29.
- Surface rolling.
- Scattering timber mostly.
- Soil 2nd rate.

West on Rangeland between secs. 19 and 30.

Var. $13^{\circ} 42' E.$

- 12.00 Trail, bears north and south.
- 25.50 Enter timber bears N. and south.
- 40.00 Set temporary $\frac{1}{4}$ sec. corner.
- 79.34 Intersect Range line 6 lks. S. of corner to secs. 19, 24, 25 and 30.
- Then S. $89^{\circ} 57' E.$ on true line.
- Var. $13^{\circ} 42' East.$
- 39.34 Set sandstone 14x14x3 for $\frac{1}{4}$ sec. corner as per instructions.
- 79.34 Corner to secs. 19, 20, 29 and 30.
- Surface rolling.
- Scattering piñon and cedar 3d rate.
- Soil 2nd rate.

North between secs. 19 and 20.

Var. $13^{\circ} 42' E.$

- 37.50 Brook, 10 lks. wide, course S. $75^{\circ} E.$
- 40.00 Set charred post, built mound and dug pits for $\frac{1}{4}$ sec. corner as per instructions.

Chains.

80.00

Deposited marked stone, set charred post, marked, built mound and dug pits as per instructions for the corner to secs. 17, 18, 19 and 20.
Surface level. Prairie.
Soil 1st rate.

East on true line between secs. 17 and 20.

Var. 13° 42' E.

19.20

Creek, 40 lks. wide, course S.

40.00

Set sandstone 14x12x3 for $\frac{1}{4}$ sec. corner as per instructions.

69.70

Enter broken ground.

80.00

Set sandstone 16x10x3 marked as per instructions for the corner to secs. 16, 17, 20 and 21.

Surface level. Prairie.

Soil 1st rate.

East on true line between secs. 16 and 21.

Var. 13° 45' East.

30.00

Trail bears N. E. and S. W.

38.00

Foot of perpendicular bluff, bears north and south. Impracticable to proceed further.

Set sandstone 14x10x8 marked " W. C." as witness corner.

Surface gently rolling. Prairie.

Soil 2nd rate.

North between secs. 16 and 17.

Var. 13° 45' East.

chains.

40.00 Set sandstone 20x12x4 for $\frac{1}{4}$ sec. corner as per instructions.

80.00 Set sandstone 18x12x4 marked as per instructions for the corner to secs. 8, 9, 16 and 17.
Surface broken.

Scattering piñon and cedar 3rd rate.

Soil 2nd rate.

East on true line between secs. 9
and 16.

Var. $13^{\circ} 42' E.$

36.00 Trail, bears north and south.

39.50 Foot of sandstone bluff, bears north and south.

Set a witness corner. Sandstone 14x12x3
marked ".W.C.".

Surface rolling.

Scattering cedar, 3rd rate.

Soil 2nd rate.

North between secs. 8 and 9.

Var. $13^{\circ} 45' E.$

40.00 Set sandstone 16x14x4 for $\frac{1}{4}$ sec. corner as per instructions.

71.30 Trail, bears N. W. and S. E.

80.00 Deposited marked stone, set charred post, marked, built mound and dug pits as per instructions for the corner to secs. 4, 5, 8 and 9.

Surface rolling.

Scattering piñon and cedar, 3rd rate.

Soil 2nd rate.

East on true line between secs.
4 and 9

Chains

- 28.00 Church rock and bluff, bears N. and S.
- 32.20 Trail bears N. and S.
- 36.40 Bluff, bears N. and S.

BOOK 1948

Set sandstone 18x14x6 marked " W . C. " as witness corner.

Surface rolling.

Scattering piñon and cedar 3rd rate.

Soil 2nd rate.

North on random between secs. 4 and 5.

Var. 13° 45' East.

- 11.00 Trail, bears east and west.
- 30.00 Creek 1 chn.wide, course west.
- 32.00 Trail, bears east and west.
- 40.00 Set temporary $\frac{1}{4}$ sec. corner.
- 80.10 Intersect Township Line at corner to secs. 4, 5, 32 and 33.

Then South on true line.

Var. 13° 45' E.

- 40.10 Set charred post, built mound and dug pits as per instructions for $\frac{1}{4}$ sec. corner.
 - 80.10 Corner to secs. 4, 5, 8 and 9
- Surface rolling.
- Scattering piñon and cedar, 3rd rate.
- Soil 2nd rate.

West on random between secs. 18 and 19.

Var. 13° 42' East.

- 10.50 Trail, bears N. and south.
- 17.50 Brook, 10 lks. wide, course S.E.
- 32.00 Enter timber, bears N. W. and S. E.
- 40.00 Set temporary $\frac{1}{4}$ sec. corner.
- 79.30 Intersect Range line 4 lks. north of corner to

B. G. Hains.

secs. 13, 18, 19 and 24.

Then N. 89° 58' E. on true line.

Var. 13° 42' E.

39.30 Set sandstone 16x14x3 for $\frac{1}{4}$ sec. corner as per instructions.

79.30 Corner to secs. 17, 18, 19 and 20.

Surface rolling.

Scattering piñon and cedar, 3rd rate.

Soil 2nd rate.

North between secs. 17 and 18.

Var. 13° 42' E.

12.00 Brook 20 lks. wide, course S.E.

17.00 Brook 20 lks. wide, course S. W.

19.10 Brook, 20 lks. wide, course S. 20° E.

36.50 Bank of brook.

38.00 Leave same, bears S. W.

40.00 Set charred post, built mound and dug pits as per instructions for $\frac{1}{4}$ sec. corner.

80.00 Set sandstone 14x12x3 marked as per instructions for the corner to sections 7, 8, 17 and 18.

Surface level..Prairie.

Soil 1st rate.

East on random line between secs. 8 and 17.

Var. 13° 45' E.

14.20 Creek, 20 lks. wide, course S.

40.00 Set temporary $\frac{1}{4}$ sec. corner.

69.70 Enter broken ground and cedars.

80.10 Intersect sec. line 8 lks. North of corner to secs. 8, 9, 17 and 16.

Then N. 89° 57' W. on true line.

BOOK 1948

Chains.

Var. 13° 45' East.

40.05 Set sandstone 14x12x3 for $\frac{1}{4}$ sec. corner as per instructions.

80.10 Corner to secs. 7, 8, 17 and 18.

Surface level, mostly prairie.

Soil 1st rate.

West on random line between secs. 7 and 18

Var. 13° 42' East.

8.50 Trail, bears north and south.

15.00 Trail, bears north and south.

19.00 Trail bears north and south.

27.00 Foot of hills, bear N. and south.

27.80 Enter timber.

40.00 Set temporary $\frac{1}{4}$ sec. corner.

79.10 Intersect Range line at corner to secs. 7, 12, 13 and 18.

Then East on true line.

Var. 13° 42' East.

39.10 Set sandstone 24x16x8 for $\frac{1}{4}$ sec. corner as per instructions.

79.10 Corner to secs. 7, 8, 17 and 18.

Surface rough.

Scattering piñon and cedar, 3rd rate.

Soil 2nd rate.

North between secs. 7 and 8.

Var. 13° 42' E.

15.50 Trail, bears N. N. E. and S. S. W.

17.50 Ravine, 20 lks. wide, course S.S.E.

40.00 Set charred post, built mound and dug pits as per instructions, for $\frac{1}{4}$ sec. corner.

40.00 Ravine course S. W.

BOOK

chains.

- 52.00 Leave same, course west.
 61.50 Ravine course S.E.
 63.00 Leave same.
 71.00 Foot of hills, bear N. E. and S.W.
 72.00 Enter timber, bears N. E. and S.W.
 80.00 Set sandstone 26x24x6 marked as per instructions for the corner to secs. 5, 6, 7 and 8.
 Surface level, mostly prairie'.
 Soil 1st rate.

East on random ~~line~~ between secs. 5
and 8.

Var. 13° 42' E.

- 10.60 Trail, bears N. and south.
 19.70 Ravine, bears south.
 40.00 Set temporary $\frac{1}{4}$ sec. corner.
 46.00 Creek, 100 lks. wide, course S.W.
 79.98 Intersect sec. line at corner to secs. 4, 5, 8
and 9.

Then West on true line

Var. 13° 42' East.

- 39.99 Set charred post, built mound and dug pits for
 $\frac{1}{4}$ sec. corner as per instructions.
 79.98 Corner to secs. 5, 6, 7 and 8.
 Surface gently rolling.
 Scattering piñon and cedar 3rd rate.
 Soil 2nd rate.

West on random between secs. 6 and 7.

Var. 13° 42' E.

- 40.00 Set temporary $\frac{1}{4}$ sec. corner.
 79.04 Intersect Range line 10 lks. south of corner
to secs. 1, 6, 7 and 12.

Chains.

Then S. 89° 56' E. on true line.

Var. 13° 42' East.

39.04 Set sandstone 14x12x6, for $\frac{1}{4}$ sec. corner as
per instructions.

79.04 Corner to secs. 5, 6, 7 and 8.

Surface rolling.

Scattering piñon and cedar, 3rd rate.

Soil 2nd rate.

North on random between secs. 5 and
6.

Var. 13° 42' East.

40.00 Set temporary $\frac{1}{4}$ sec. corner.

80.12 Intersect Township line 15 links East of corner
to secs. 5, 6, 31 and 32.

Then S. 6' E. on true line with
the same variation.

40.12 Set sandstone 16x14x3 for $\frac{1}{4}$ sec. corner as per
instructions.

80.12 Corner to secs. 5, 6, 7 and 8.

Surface rolling.

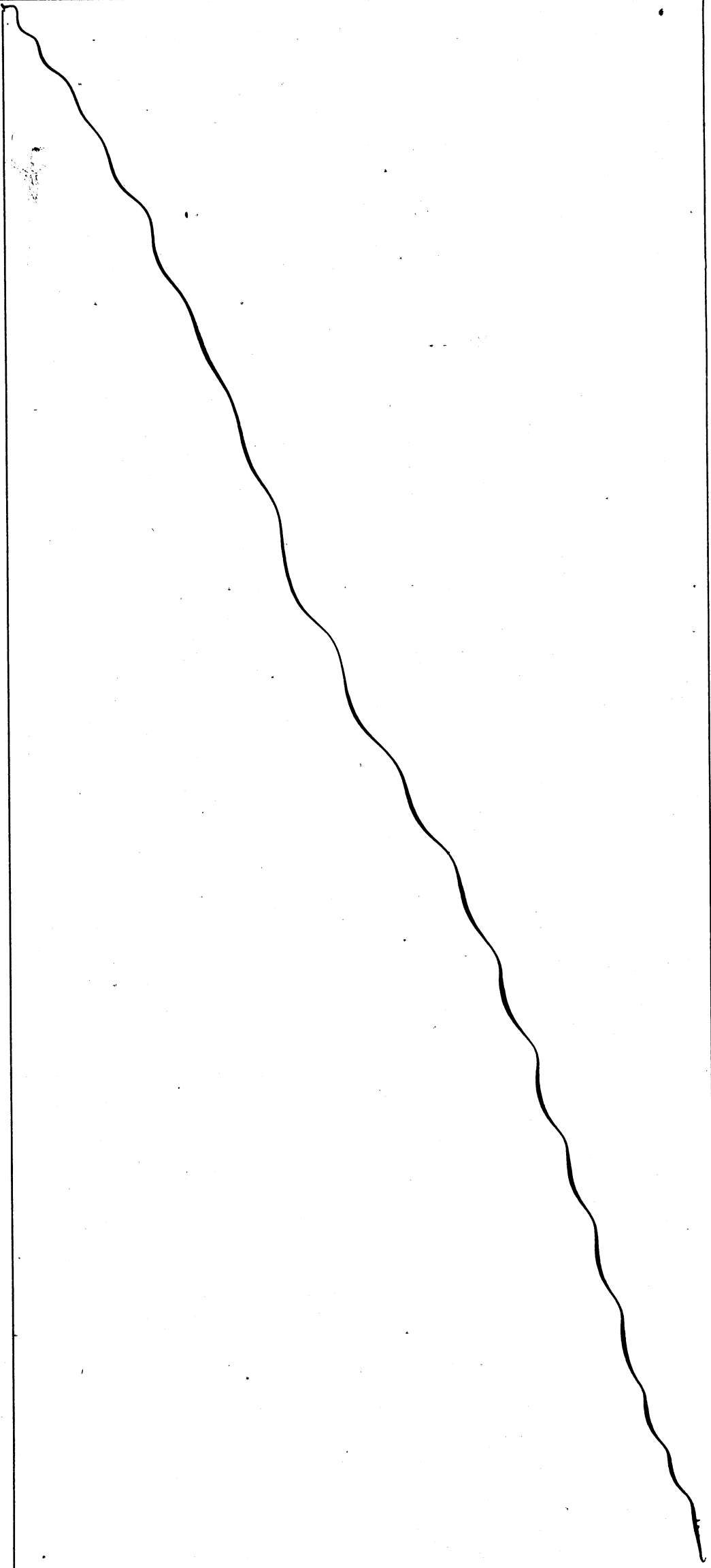
Scattering piñon and cedar 3rd rate.

Soil 2nd rate.

GENERAL DESCRIPTION OF FRACTIONAL TOWNSHIP 2
NORTH, RANGE 5 WEST OF THE NAVAJO SPECIAL MER-
IDIAN.

The land in this Township is for the
most part scatteringly covered with piñon and
cedar, 3rd rate. Surface generally rolling.
Soil 2nd, 1st and 3rd rate.

It is well adapted to farming and grazing purpo-
ses and gives evidence of having been used for
such.



We hereby certify that we assisted Ehud N. Darling, U. S. Surveyor, in subdividing fractional Townships 4, 3, and 2 North, Range 5 West, of the Navajo Special Meridian, in the Territory of New Mexico and that said fractional Townships, have been in all respects to the best of our knowledge and belief, well and faithfully surveyed and the boundary monuments planted according to the instructions furnished by the Commissioner of the General Land Office of the United States.

Geo. H. Pradt, Compassman.

Chas. C. Morten, }
Adam Whisker. } Chainmen.

Alex Douglass, }
Joseph Fierheller } Cornermen.

Subscribed and sworn to by the above named persons before me, .

Ehud N. Darling, U. S. Surveyor
in Township 1 North, Range 6 West of the Navajo Special Meridian in the Territory of Arizona, this 26th day of January 1870.

Ehud N. Darling,
U. S. Surveyor.

BOOK 1948

I, Ehud N. Darling, U. S. Surveyor, do solemnly swear that in pursuance of a Contract with Hon. Jos. S. Wilson, Commissioner of the General Land Office, dated, Washington, D.C., April 29th, 1869, and subsequent Special Instructions dated May 4th, 1870 and in strict conformity to the laws of the United States and instructions furnished by the Commissioner of the General Land Office of the United States, I have faithfully subdivided fractional Townships 4, 3, and 2 North, Range 5 West of the Navajo Special Meridian, in the Territory of New Mexico, and do further solemnly swear that the foregoing are the true and original field notes of such survey.

Ehud N. Darling.

U. S. Surveyor.

Subscribed by said Ehud N. Darling, U. S. Surveyor, and sworn to before me, a justice of the Peace for Washington, D. C. , this 21st day of May, 1870.

Wm. Martin, J. P. (seal).

DEPARTMENT OF THE INTERIOR,
GENERAL LAND OFFICE,

March 7th, 1871.

The foregoing field notes of the survey subdivision lines of Townships 4, 3, and 2 North, Range 5 West, of the Navajo Special Meridian, in New Mexico, executed by Ehud N. Darling, U. S. Surveyor, under his Contract dated April 29, 1869, and Special Instructions dated May 4th 1870, in the month of November 1869, having been critically examined, the necessary corrections and explanations made, the said notes and the surveys they describe, are hereby approved.

Willis Drummond,
Commissioner.

Department of the Interior,
General Land Office,
February 27, 1877.

A true copy.

J. A. Williamson,
Commissioner.

Office of U. S. Surveyor General,
Santa Fe, New Mexico.

November 24th 1902.

I, Morgan O. Llewellyn, U. S. Surveyor General for New Mexico, do hereby certify that the foregoing is a true and correct transcript of a copy of the field notes of the survey of the Subdivisional Lines of Townships 4, 3, and 2 North, Range 5 West of the Navajo Special Meridian in the Navajo Indian Reservation, now on file in my office.



U. S. Surveyor General for New Mexico.

