

2009

BOOK 2009

Field Notes

OF THE SURVEY OF

The Exterior Bounda-
ries of the Pima and
Maricopa Indian
Reservations. 2009
Gila and Salt River Base and Meridian

ARIZONA.

By Theodore F. White, D. S.

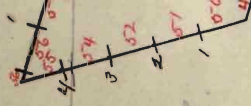
under contract dated Nov. 1, 1875.

Survey commenced Jan. 10, 1876.

Survey completed Jan. 19, 1876.

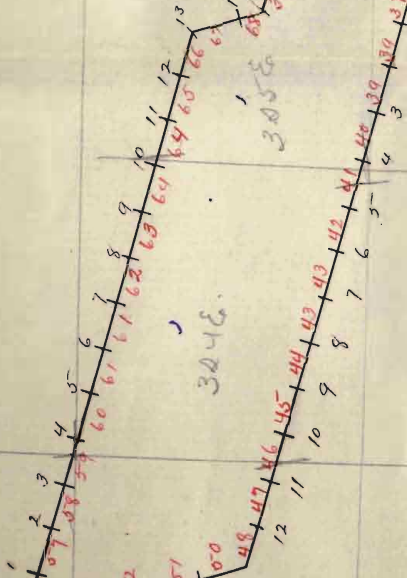
2009

243E



323E

324E



325E

326E

327E



427E

426E

Index

BOOK 2009

I.P.T.

Preliminary Oaths of Assistants.

We, Urban Bessard
and R. A. Vasquez
do solemnly swear that we will faithfully execute
the duties of Chain Carriers; that we will level the
chain upon uneven ground, and plumb the tally
pins, whether by sticking or dropping the same;
that we will report the true distance to all notable
objects, and the true length of all lines that we as-
sist in measuring, to the best of our skill and
ability.

Urban Bessard
R. A. Vasquez

Sworn to and subscribed before me, this 19th
day of January, 1876
William J. Osburn
Notary Public

We, Fred. C. Jones and
Wright N. Aubrey,

do solemnly swear that we will well and truly per-
 form the duties of Aceman and flag-
man, respectively —
 according to instructions given us, and to the best
 of our skill and ability.

Fred. C. Jones
Wright N. Aubrey

Sworn to and subscribed before me this 27th
 day of January, 1876

William J. Osborn
Notary Public



Survey of the Pima & Maricopa Indian
Reservation, Pinal County, Arizona.

This survey commenced January 10th 1876.

I start at a mound of earth in front
of the old Sweet Water station, Pinal
County, Arizona Territory, said
mound having long been known
as one of the monuments on the
line of the Pima and Maricopa
Indian reservation, and established
at an angle thereof. I establish
this as my initial point of this
survey and set a post 8 feet long
squared 8 inches, 2 ft below the
natural surface of the ground
and build around it a mound
of earth 6 ft high and 12 ft in
diameter at base, the mound
coming to the top of the post,
but I calculate that the mound
will settle sufficiently in

Survey of the Pima & Maricopa Indian
Reservation. Pinal County, Arizona.

No. time to show the marks on the
fact, which marks are,
P.-M. I. R. I. Pt. '76.

From this monument the N.E. corner
of the old Sweet Water station was
S. 14° W. 5.22 chs. dist. The S.W.
cor. of the new station, on the N. side
of the road, was S. $53\frac{1}{2}^{\circ}$ E. 5.46 chs. dist.
No trees near this corner.

From this initial point I
run southerly, on a course taken
by measurement from a certain
map, "showing proposed exten-
sions," of the reservation from
surveys made in 1870. This
map and the evidence of persons
living near the reservation is all
that I have to guide me in
re-establishing the boundaries
of the reservation. I run

Survey of the Pima & Maricopa Indian
Reservation, Pinal County, Arizona.

No. southerly on a course $S. 18^{\circ} 10' E.$

var. $14^{\circ} 39'$ East

As per Buick's improved Solar Compass.

At 1 mile and 39.87 chs. I arrive at
a point 98 lvs. westerly, (at right
angle with the line I have run,
a post in a mound of earth, the
post being marked "P. & M. Res.
159." This is the S. W. cor. of the eastern
portion of the reservation. The true
course of the line from the initial point
to this cor. is therefore $S. 18^{\circ} 38' E.$

I return to the initial point and run
 $S. 18^{\circ} 38' E.$ on reservation boundary.

var. $14^{\circ} 39'$ East

4.00 Stage road from Tucson to Yuma, br. N. N. $45^{\circ} E.$

40.00 Set a post, 4 ft long, 4 in. sq. d. 18 in. in
the ground, drive charred stake & build
mound of earth 2 ft high taken from
2 pits on line of reservation, N. and S.

Survey of the Pima & Maricopa Indian
Reservation, Pinal County, Arizona.

No. and mark post "P.-M.I.R. 1/2" for a
half mile corner.
No trees near.

68.00 Dry bed of wash, 25 lvs. wide, runs N.E.

80.00 Set a post, 4 ft long, 4 in. sq. 1 1/2 ft in
the ground. Drive charred stake and
build mound of earth 2 ft high,
taken from 2 pits, N. and S. on line
for mile cor. from which

A Pale Fir tree, 13 in. dia. base, S. 83 1/2° E. 42 1/2' lead dist.

No other trees near. Mark post and tree

"P.-M.I.R. 1.5." (For one mile S. of initial point.)

Surface of land, nearly level. No timber.

S. 18° 38' E. on 2^d mile southerly from Initial Point.
var. 14° 39' East

9.20 Dry bed of wash, 40 lvs. wide, runs N.E.
39.87 To the S.W. cor. of the eastern portion of the
reservation. Re-establish this by set-
ting a post 6 ft long, 6 in. sq. 1 1/2 ft

Survey of the Pima & Maricopa Indian
Reservation, Pinal County, Arizona.

Is in the ground and built mound of
earth 4 ft high and 8 ft dia. at base
from which

1 Pale Firera tree, 9 in dia. base, S. 81° 3/4' E. 255 lvs. dist.

do. 14 " " " N. 81° E. 224 " "

Mark post "P. M. I. R. 146"

Mark trees, "P. M. I. R."

Land level. Scattering trees & brush.

From this corner just established, run
on the S. boundary of the eastern
portion of the reservation on a course of
S. 74° 13' E. on random line.

var. 14° 39' East

Set temporary cors. at every 40 and
80 chs. and at 7 miles and 40 chs.

I arrive at a point 2.22 chs. southward,
(at right angles to the line I have run,)
from a mound on the west side of the
road from Sacaton to Picacho etc, which

Survey of the Pima & Maricopa Indian
Reservation. Pinal County. Arizona.

This mound is a monument established
on the S. boundary of the reservation.

The true course of the S. boundary
of this portion of the reservation is
therefore S. $74^{\circ}26'$ E.

Returning to the S. W. cor. of the
eastern portion of the reservation,
from thence easterly on true line
S. $74^{\circ}26'$ E.

var. $14^{\circ}39'$ East.

As per Burt's improved solar compass.

- 18.00 Dry bed of stream, 25 lvs. wide, remost E.
24.00 Dry bed of stream, 25 lvs. wide, remost E.
40.00 Set a post, 4 ft long, 3 in. sqd. 1 1/2 ft in the
ground, drive charred stake and build
mound of earth 2 ft high, taken from 2 pits
on line N. and E. for 1/2 mile cor. from which
4 pale Firratree 14 in. dia. br. N. $44\frac{1}{2}^{\circ}$ N. 249 lead set
mark post & tree P. M. D. R. 1/2.
47.00 Dry bed of stream 40 lvs. wide, brs. N. E.

Survey of the Pima & Maricopa Indian
Reservation, Pinal County, Arizona.

hs. Continued -

80.00 Set a post, 4 ft long, 3 in. sq'd, 1 1/2 ft in the
ground, drive charred stake and build
mound of earth 2 ft high, with 2 pits on
line N. and E. for mile cor. from which
A Pale Firra, 12 in. dia. brs. S. 61 1/4° E. 65 hrs. dist.

do. 4 " " " N. 74 1/4° E. 105 " "

Mark post and trees, P. M. D. R. 1. E.
for 1/2 mile east on this portion of boundary
Land descends a little N. Pale Firra
trees and some brush.

S. 74° 26' E. on 2^d mile S. boundary, E. end.
variations 14° 39' East.

38.00 Dry bed of stream 30 hrs. wide, brs. N. E.

40.00 Set a post, 4 ft long, 3 in. sq'd, 1 1/2 ft in the
ground, drive charred stake and build
mound of earth 2 ft high, with 2 pits
on line N. and E. for 1/2 mile cor. from which
A Pale Firra, 7 1/2 in. dia. brs. S. 48 1/2° E. 49 hrs. dist.

Survey of the Pima & Maricopa Indian
Reservation, Pinal County, Arizona.

Continued. -

- 80.00 Mark post and tree P. M. I. R. 1/2.
Set a post, 4 ft long, 3 in. sq. 1 1/2 ft in the
ground, drive charred stake and build
mound of earth 2 ft high, with 2 pits
on line N. and E. and mark post
P. M. I. R. 1/2 E. for mile cor. on
2^d mile E. on S. boundary, E. end.
No trees near.
Land nearly level; A few trees & brush.

S. $74^{\circ} 26'$ E. on 3^d mile, S. boundary, E. end.
var. $14^{\circ} 39'$ East.

- 17.00 Dry bed of stream, 50 hrs. wide, runs N. E.
40.00 Set a post, 4 ft long, 3 in. sq. 1 1/2 ft in the
ground, drive charred stake and build
mound of earth 2 ft high, with 2 pits on
line N. and E. for 1/2 mile cor. from which
Mesquite, 6 in. dia. wo. S. $68^{\circ} 14'$ N. 136 hrs. dist
Mark post & tree P. M. I. R. 1/2.
57.00 Dry bed of stream, 70 hrs. wide, runs N. E.

Survey of the Pima & Maricopa Indian
Reservation, Pinal County, Arizona.

80.00 Contained -
Set a post, 4 ft. long, 3 in. sq. d. 1 1/2 ft. in the
ground, drive charred stake and build
mound of earth 2 ft. high with 2 pits on
line N. and E. for mile cor. from which
Amesquite 12 in. dia. brs. S. 65 1/4° W. 158 lbs. dist.
do. 6 " " " N. 32 1/2° W. 273. "
Mark post & tree P. M. D. R. S. E. for
3/4 mile Easterly on S. boundary, E. end.
Land descends a little N. Scattering
trees.

S. 44° 26' E. on 4th mile, S. boundary, E. end.
var. 14° 39' East

40.00 Set a post, 4 ft. long, 3 in. sq. d. 1 1/2 ft. in the
ground, drive charred stake and build
mound of earth 2 ft. high, with 2 pits
on line N. & E. for 1/2 mile cor. from which
Amesquite, 6 in. dia. brs. S. 44° E. 116 lbs. dist.
Mark post & tree P. M. D. R. 1/2.

Survey of the Pima & Maricopa Indian
Reservation, Pinal County, Arizona.

Continued -

his. Indian Agency building bro. from
this cor. N. 35° E.

41.00 Dry bed of stream, 20 hrs. wide, bro. N. E.

80.00 Set a post, 4 ft long, 3 in. sq. 1 1/2 ft in the
ground, drive charred stake and build
mound of earth 2 ft high, with 2 pits on
line N. and E. for mile cor. from which
S. Pale Verde, 12 in. dia. bro. S. 26° 47' N. 459 lbs. dist
Mark post and tree P. M. I. R. 4 E.
for 4th mile easterly on S. boundary, E. end,
Indian Agency building bro. from
this cor. N. 73° 4' E.

S. 44° 26' E. on 5th mile S. boundary, E. end.
N. 14° 39' East.

8.00 Dry bed of stream, 15 hrs. wide, runs N.

40.00 Set a post, 4 ft long, 3 in. sq. 1 1/2 ft in the
ground, drive charred stake & build mound
of earth 2 ft high, with 2 pits on line N. and
E. for 1/2 mile cor. & mark post, P. M. I. R. 1/2.

Survey of the Pima & Maricopa Indian
Reservation. Pinal County, Arizona.

Continued -

No trees near.

Sacaton Station bears from this cor. N. $51\frac{1}{2}^{\circ}$ E.

67.00 Road runs N. E.

80.00 Set a post, 4 ft long, 3 in. sq. $1\frac{1}{2}$ ft
in the ground, drive charred stake and
build mound of earth 2 ft high, from
2 pits on line N. and E. and mark
post P. M. S. R. 5 E. for mile cor. on
5th mile easterly on S. boundary, E. end.
No trees near.

Sacaton Station bears N. $16\frac{1}{4}^{\circ}$ E.

Land descends a little N. No timber.

January 10th 1876.

S. $74^{\circ} 26'$ E. on 6th mile S. boundary, E. end.
var. $14^{\circ} 39'$ East

40.00 Set a post, 4 ft long, 3 in. sq. $1\frac{1}{2}$ ft in the
ground, drive charred stake and build
mound of earth 2 ft high, with 2 pits
on line N. and E. for $\frac{1}{2}$ mile cor. from which

Survey of the Pima & Maricopa Indian
Reservation, Pinal County, Arizona.

Continued—

Chs. Armesquite, 10 in. dia. bvs. S. $76^{\circ} \frac{3}{4}'$ N. 319 lbs. diet
Mark post & tree. P. M. I. R. $\frac{1}{2}$.

50.00 Set a post, 4 ft long, 3 in. sqd. $1\frac{1}{2}$ ft in the ground,
drive charred stake and build mound of
earth 2 ft high, with 2 pits on line N. & E. for
mile cor. and mark post P. M. I. R.
6 E. for 6th mile easterly on S. boundary
E. end. No trees near.

Land descends a little N. No timber.

S. $74^{\circ} 26'$ E. on 7th mile S. boundary, E. end;
var. $14^{\circ} 39'$ East.

40.00 Set a post, 4 ft long, 3 in. sqd. $1\frac{1}{2}$ ft in
the ground, drive charred stake & build
mound of earth 2 ft high, with 2 pits on
line N. and E. and mark post P. M.
I. R. $\frac{1}{2}$, for $\frac{1}{2}$ mile cor. No trees near.

70.00 Dry bed of stream, 15 lbs. wide, bvs. N. N.

80.00 Set a post, 4 ft long, 3 in. sqd. $1\frac{1}{2}$ ft in the
ground, drive charred stake and build

Survey of the Pima & Maricopa Indian
Reservations, Pinal County, Arizona.

30. Continued.
30. mound of earth 4 ft high, with pile on
line N. and E. for mile cor. from which
Amesquite, 6 in. dia. brs. N. $19^{\circ} 2'$ E. 351 lbs. dist.
Mark post & tree P. M. D. R. 7° E. for
 7^{th} mile easterly on S. boundary, E. end.
Land flat. No timber

31. $74^{\circ} 26'$ E. on 8^{th} mile S. boundary, E. end.
var. $14^{\circ} 39'$ East.

40. 00 To mound of earth on N. side of road.
Re-establish this monument. Set a post
6 ft long, 6 in. sq'd. $1\frac{1}{2}$ ft below the natural sur-
face of the ground and build around it
a mound 4 ft high, and 8 ft dia. at
base. From which
Amesquite, 7 in. dia. brs. N. $65^{\circ} 14'$ E. 425 lbs. dist.
Mark post & tree P. M. D. R.

40. 20 Road from Sacaton to Picacho Etc.

80. 00 Set a post, 4 ft long, 3 in. sq'd. $1\frac{1}{2}$ ft in the
ground, drive cherted stake and build

Survey of the Pima & Maricopa Indian
Reservations, Pinal County, Arizona.

Continued -

Chs. mound of earth 2 ft high, with 2 pits on line
N. and E. for mile cor. from which
A mesquite 8 in. dia. br. S. $57\frac{3}{4}^{\circ}$ N. 217 lbs. dist.
Mark post & tree, P.M.D.R. & E. for
8th mile east on S. boundary, E. end.
Land flat surface. A few trees on east $\frac{1}{2}$ mile.

S. $4^{\circ} 26'$ E. on 9th mile, S. boundary, E. end.
var. $14^{\circ} 39'$ East

- 10.00 Dry bed of stream, 25 lbs. mile, runs E.
- 40.00 Set a post, 4 ft long, 3 in. sq. d. $1\frac{1}{2}$ ft in the ground, drive
charred stake & build mound of earth 2
ft high with 2 pits on line N. and E. for $\frac{1}{2}$ mile
cor. from which
A mesquite, 20 in. dia. br. S. $53\frac{1}{2}^{\circ}$ N. 192 lbs. dist.
Mark post & tree, P.M.D.R. $\frac{1}{2}$.
- 80.00 Set a post, 4 ft long, 3 in. sq. d. $1\frac{1}{2}$ ft in the ground, drive
charred stake & build mound of earth 2 ft high with
2 pits on line N. & E. for mile cor. from which
A mesquite, 8 in. dia. br. S. $88\frac{1}{2}^{\circ}$ E. 311 lbs. dist.

Survey of the Pima & Maricopa Indian Reservation, Pinal County, Arizona.

Ins

Continued.
No other trees near. Mark post & tree P.M.D.R. 9 E. for 9th mile easterly on S. boundary, E. end.

Land flat. Scattering trees. Some Sacaton grass.

S 44° 26' E. on 10th mile S. boundary, E. end.
var. 124° 39' East

40.00 Set a post, 4 ft. long, 3 in. sqd. 1 1/2 ft. in the ground. Drive charred stake and build mound of earth 2 ft. high, with 2 pits on line E. end N. post 1/2 mile cor. from which

a mesquite, 3 in. dia. br. N. 70° E. 47 1/2 lbs. dist.

Mark post & tree, P.M.D.R. 12.

80.00 Set a post, 4 ft. long, 3 in. sqd. 1 1/2 ft. in the ground, drive charred stake and build mound of earth 2 ft. high, with 2 pits on line N. & E. for mile cor. from which
A mesquite, 5 in. dia. br. N. 19 1/2° W. 3 1/2 lbs. dist.

do. 5 " " " N. 81 1/2° W. 289 " "

Mark post & trees, P.M.D.R. 10 E. for 10th mile easterly, on S. boundary, E. end.
Land flat. Some mesquite bushes

BOOK 2009

Survey of the Pima & Maricopa Indian
Reservation, Pinal County, Arizona

23.00 S. $14^{\circ} 39'$ E. on 11th mile, S. boundary, E. end.

var. $14^{\circ} 39'$ East

23.00 Indian village immediately S. of line.

40.00 Set a post, 4 ft long, 3 in. sq. d. 12 ft in the ground, drive charred stake and build mound of earth 2 ft high, with 2 pits on line, N. and E. for 1/2 mile cor. from which

A mesquite, 12 in. dia. base, S. 12° E. 30 lbs. Dial
Mark post 4 trees, P. M. D. R. 12.

54.00 Trail base, N. W. and S. E.

80.00 Set a post, 4 ft long, 3 in. sq. d. 12 ft in the ground, drive charred stake and build mound of earth 2 ft high with 2 pits on line N. and E. for mile cor. from which

A mesquite, 15 in. dia. base, N. $33^{\circ} 14'$ E. 294 lbs. dia. t.
do. 5 " " " N. $5^{\circ} 14'$ E. 247 " "

Mark post 4 trees, P. M. D. R. 11. E. for the
11th mile, easterly, on S. boundary, E. end.

Land flat. Mesquite timber & brush.

Survey of the Pima & Maricopa Indian Reservation, Pinal County, Arizona.

Stn. S. $4^{\circ}26' E.$ on 12th mile, S. boundary, E. end.
var. $14^{\circ}39' East$

40.00 Set a post, 4 ft long, 3 in. sq. 1/2 ft in the ground, drive charred stake & build mound of earth 2 ft high, with 2 pits on line N. and E. for 1/2 mile cor. from which

A mesquite, 13 in. dia. br. N. $8^{\circ} E.$ 221 lvs. dist. Mark post & tree, P. M. I. R. 1/2.

80.00 Set a post, 4 ft long, 3 in. sq. 1/2 ft in the ground, drive charred stake and build mound of earth 2 ft high, with 2 pits on lines N. and E. for mile cor. from which

A mesquite, 15 in. dia. br. S. $7^{\circ} E.$ 93 lvs. dist.
do. 9 " " S. $67^{\circ} 14' N.$ 71 " "

Mark post & trees, P. M. I. R. 12 E. for the 12th mile, easterly, on S. boundary, E. end.

Land flat. Considerable mesquite. Brush.

S. $4^{\circ}26' E.$ on 13th mile, S. boundary, E. end.
var. $14^{\circ}39' East$

Survey of the Pima & Maricopa Indian Reservation, Pinal County, Arizona.

hs. Continued -

22.64 Is an almost obliterated mound of earth, and a fragment of a post lying by it, upon which I am able to decipher "P. + M. Res."

This is the S.E. cor. of the reservation. I re-establish this cor. by setting a post, 6 ft long, 6 in. sq. d. 1 1/2 ft in the ground, and build around it a mound of earth 4 ft high, and 8 ft dia. at base, from which

to mesquite, 16 in. dia. bears S. 14° E. 27 lbs. dist.
do. 12 " " N. 16 1/4° W. 42 " "

Mark post & trees P. M. I. R. S. E. for the southeast cor. of the reservation
Land flat. Considerable mesquite timber and brush.

Survey of the Pima & Maricopa Indian
Reservation, Pinal County, Arizona.

No. From the S. E. cor. of the reservation I run
northwesterly along E. end of reservation, as follows:
Taking the course for the end lines of the
reservation, which I found to be the cor-
rect one in running from the initial
point, southerly, as shown heretofore,
I therefore run on this E. end line, on true course
N. $18^{\circ}38'$ W. on 1st mile, of E. end of reservation.
variations $14^{\circ}35'$ E.

Alpha Burt's improved solar compass.

40.00 Set a post, 4 ft. long, 3 in. sq. d. $1\frac{1}{2}$ ft. in the ground,
drive charred stake & build mound of earth 2
ft. high, with 2 pits on line S. & N. for $\frac{1}{2}$ mile
cor. from which

Amesquite, 15 in. dia. on N. 40° E. 15 lbs. dist.
Mark post & tree P. M. & R. $\frac{1}{2}$.

80.00 Set a post, 4 ft. long, 3 in. sq. d. $1\frac{1}{2}$ ft. in the
ground, drive charred stake and build
mound of earth 2 ft. high, with 2 pits
on line S. and N. for mile cor. from which

Survey of the Pima & Maricopa Indian Reservation, Pinal County, Arizona.

Continued.

Chs. A mesquite, 7 in. dia. brs. N. 50 1/2° E. 150 lbs. dist.
do. 8 " " " S. 4 1/4° W. 134 " "

Mark post & trees, P. M. S. R. 1 N. for the 1st mile running northerly on E. end boundary of reservation.

Land flat. Considerable mesquite timber and brush.

N. 18° 38' W. on 2nd Mile of E. end of Reservation
var. 14° 35' East

10.50 Stage road brs. N. W. and S. E. I run back on line 50-lbs. and at 10 chs. from last cor. I build a monument on E. end boundary of reservation. Set a post, 8 ft long, 7 in. sq'd. 2 ft in the ground and build around it a mound of earth 5 ft high, 12 ft in dia. at base, from which

A mesquite 12 in. dia. brs. N. 80° 3/4° W. 50 lbs. dist.
do. 7 " " " N. 44 1/2° E. 154 " "

Survey of the Pima & Maricopa Indian
Reservation, Pinal County, Arizona

hs. Continued -

38.00 Ditch runs N

40.00 Set a post 4 ft long, 3 in. sq'd. $1\frac{1}{2}$ ft in
the ground, drive charred stake and
build mound of earth 2 ft high, with 2
pits on line S. and N. for $\frac{1}{2}$ mile cor. from which
Amesquite, 20 in. dia. brs. S. 26° E. 73 lbs. dist
Mark post & tree, P. M. I. R. $\frac{1}{2}$.

61.80 Bank of a branch of the Gila river, 1 ch.
wide, running N. N. water shallow
and I chain across it.

47.60 Bank brs. N. N.

80.00 Set a post, 4 ft long, 3 in. sq'd. $1\frac{1}{2}$ ft in the
ground, drive charred stake and build
mound of earth 2 ft high with 2 pits on
line S. and N. for mile cor. from which
S cottonwood, 10 in. dia. brs. N. 6° N. 112 lbs. dist
do 5 " " S. 20° E. 35 " "

Mark Post & tree, P. M. I. R. 2. N. for 2 mile N.
on E. and bound. of reservation
Land survey by great deep, by small branches of Gila river, Wash.

Survey of the Pima & Maricopa Indian
Reservation, Pinal County, Arizona.

No. 1838 N. on 3rd mile of E. end of Reservation.
var. $114^{\circ}35'$ East

14.00 A stream of the N. branch of the Gila river, 60 km wide,
brs. N. 91. D chain across it

15.00 A second stream, 50 km wide, brs. N. 77.

40.00 Set a post, 4 ft. long, 3 in. sqd. $1\frac{1}{2}$ ft. in the ground, drive
charred stake and build mound of earth 2 ft. high,
with 2 pits on line S. and N. and mark post P. M.
S. R. $\frac{1}{2}$, for $\frac{1}{2}$ mile corner.
No trees near.

80.00 Set a post, 4 ft. long, 3 in. sqd. $1\frac{1}{2}$ ft. in the ground,
drive charred stake and build mound of earth
2 ft. high, with 2 pits on line S. and N. for
mile cor. from which
A mesquite, 4 in. dia. brs. N. 3 $^{\circ}$ E. 152 km dist.
No other trees near. Mark Post and tree,
P. M. S. R. $\frac{3}{4}$ N. for 3rd mile northerly
on E. end.
Land swampy and cut up by small branches
of the Gila river. Crossed January 11, 1876.

No. 1838 N. on 4th mile of E. end of Reservation
var. $114^{\circ}35'$ East

26.00 Dry stream, 50 km wide, brs. S. 77.

40.00 Set a post, 4 ft. long, 3 in. sqd. $1\frac{1}{2}$ ft. in the ground,
drive charred stake & build mound of earth 2 ft.
high, with 2 pits on line S. and N. for $\frac{1}{2}$ mile
cor. from which
A Palo Verde 5 in. dia. brs. N. 68° $14'$ W. 78 km dist.
mark post and tree, P. M. S. R. $\frac{1}{2}$.

Survey of the Ponia & Maricopa Indian
Reservation, Pinal County, Arizona

Obs. Continued -

- 30.00 Set a post, 4 ft. long, 3 in. sq. d. $1\frac{1}{2}$ ft. in the ground
surrounded with stones and built mound of earth
2 ft. high, with 2 pits on line S. and N. for
mile cor. from which
S. Pale Verde, 4 in. dia. tree N. $35\frac{1}{2}^{\circ}$ E. 59 lbs. dist.
do. " " " S. $47\frac{1}{4}^{\circ}$ E. 37 " "
Mark post and trees, P.M. D. R. 4 N, for
 $1\frac{1}{2}$ mile north on E. end of reservation
land according somewhat to the N. Some
trees and brush.
-
- N. 18° 38' N. on 5th mile of E. end of Reservation.
var. 14° 35' East
- 174.00 Dry stream, 40 lbs. wide, tree S. W.
- 140.00 Set a post, 4 ft. long, 3 in. sq. d. $1\frac{1}{2}$ ft.
in the ground, and build mound of
stones 2 ft. high for $\frac{1}{2}$ mile cor. from which
A Pale Firera tree, 3 in. dia. tree S. 64° N. 63 lbs. dist.
- 45.00 Dry bed of stream, 50 lbs. wide, tree S. W.
- 70.15 A point 170 lbs. to the East (at right an-
gle to line I have been running) of a
mound of earth, - the old N. E. cor.
of the reservation. At this point,
namely 70.15 obs. on the line I

Survey of the Pima & Maricopa Indian
Reservation, Pinal County, Arizona
Continued

As above run, I establish the N.E. cor.
of the Reservation, by setting a post
6 ft long, 6 in. sq'd, 1 1/2 ft in the ground,
and build mound of earth 4 ft
high, 10 ft in dia. at base, from which
A Pale Fire, 6 in. dia. brs. N. 29 1/2° E. 124 fls. dist
do. 4 " " " N. 33 1/2° E. 113 " "
Mark Post P. M. D. R. N. E. 7/6. -
and trees, P. M. D. R. N. E.
Land unenclosed. Some trees
and brush.

From the N.E. cor. of Reservation as above
established, I run on the N. boundary
of the reservation, parallel with the S.
boundary of the same, as follows:
N. 74° 26' N. on N. boundary of Reservation.
var. 1439' East.

As per Post improved solar compass

22.64 I set a post corresponding with post

Survey of the Pima & Maricopa Indian
Reservation, Pinal County, Arizona

Continued
 At the same distance westerly
 on S. boundary, from S.E. cor. of Res-
 ervation. Set a post, 4 ft long, 3 in.
 sq'd. 1 1/2 ft in the ground, drive
 charred stake and build mound
 of earth 2 ft high, with 2 pits on
 line E. and W. from which
 A Pale Fierro, 6 in. dia. br. N. 88° E. 44 les. dist
 A Pale Verde, 6 " " " S. 43 1/2° W. 45 " "
 Mark post & trees, "P. M. I. R. O. W."

Commencing at the above cor. I count the
 miles westerly from this post. I run thence
 N. 74° 26' W. on 1st mile westerly on N. boundary
 var. 114° 39' East

4.00 Dry stream, 40 lks. wide runs S.W.
 20.00 Dry stream, 75 les. wide, runs S.W.
 40.00 Set a post, 4 ft long, 3 in. sq'd. 1 1/2 ft in
 the ground, drive charred stake and
 build mound of earth 2 ft high,

Survey of the Pima & Maricopa Indian
Reservations, Pinal County, Arizona

Continued

Go with 2 pits on line E. and W. for $\frac{1}{2}$
mile cor. from which

A Pale Verde, 6 in. dia. br. N. 10° W. 4 lbs. dist.
Mark post & tree, P. M. D. R. $\frac{1}{2}$.

53.00 Upstream, 50 lbs. wide, br. S. W.

68.00 Foot of hill and ascend.

80.00 Set a post, 4 ft long. 3 in. sq. d. $1\frac{1}{2}$ ft.
in the ground. Drive charred stake and
6 in. U around a post 2 ft high, with
2 pits on line E. and W. for mile cor.
on steep E. slope of rocky hill. From which

A Pale Verde, 3 in. dia. br. N. 85° E. 53 lbs. dist.
No other tree near.
Mark post and tree P. M. D. R. 1 W.

for 1st mile westerly on N. boundary.

Land broken and hilly on N. Scattering
trees.

N. 74° 26' W. on 2nd mile westerly on N. boundary.
var. 14° 39' East.

7.00 High rocky point of mountain, over
which the line directly runs,

Survey of the Pima & Maricopa Indian Reservation, Pinal County, Arizona.

As. and descend.

40.00 Set a post, (on rocky hill,) 4 ft long. 3 in. sq. 1 1/2 ft in the ground. Drive charred stake and build mound of earth 2 ft high, with 2 pits on line E. and W. for 1/2 mile cor. No trees near. Mark post P.M. I. R. 1/2.

50.00 Set a post, 4 ft long. 3 in. sq. 1 1/2 ft in the ground. build mound of stones 2 ft high, for mile cor. from which to Pale Picra, 4 in. dia. brs. S. 41° W. 35 lks. dist. to Pale Verde, 5 " " " N. 8 1/2° W. 60 " " Mark post & trees P.M. I. R. 2 W. Land broken and mountainous. Scattering trees.

N. 74° 26' W. on 3 mile, westerly, on N. boundary var. 114° 39' East.

40.00 Set a post, 4 ft long. 3 in. sq. 1 1/2 ft in the ground. Drive charred stake and

Survey of the Pima & Maricopa Indian
Reservation, Pinal County, Arizona.

Ch. build mound of earth 2 ft high, with
2 ft on line N and E, for 1/2 mile cor. from which
A Pale Verde, 3 in dia brs N. 74° W. 15 lbs. dist.

44.00 Dry bed of stream, 60 lbs. wide, runs S. W.

65.00 Dry bed of stream, 40 lbs. wide, runs S. W.

74.00 Dry bed of stream, 50 lbs wide, runs S. W.

80.00 Set a post, 4 ft long, 3 in. sqd. 1 1/2 ft
in the ground, and build mound
of stone 2 ft high, for mile cor.
from which

A Pale Fierro, 6 in dia brs, S. 65° W. 54 lbs. dist.

A Pale Verde, 4 " " " S. 15 1/2° W. 50 " "

Mark post & trees, P. M. D. R. 3 W.

Land moccas and stony. Scattering
trees. January 12. 1876.

N. 74° 26' W. on 4th mile, westerly, on N. boundary,
var. 14° 39' East.

21.00 Dry stream, 40 lbs. wide, brs. S. W.

40.00 Set a post, 4 ft long, 3 in. sqd. 1 1/2 ft in

Survey of the Pima & Maricopa Indian
Reservations, Pinal County, Arizona

Go to the ground, drive charred stake
and build mound of earth 2 ft
high, with 2 pits on line E. and W.
for $\frac{1}{2}$ mile cor. Mark Post. P. M.,
D. R. $\frac{1}{2}$. No trees near.

The ground in advance is too rough
to chain over and I have to resort
to triangulation. Going back on my
line 5 Chs. I measure, from that point,
off a base line 5 Chs. N. $15^{\circ}34'$ E. to a
point whence a flag set on line of res-
ervation, on top of high rocky ridge,
brs. S. $89^{\circ}10'$ W. making distance to
flag, 17.05 chains. or on line

52.05 Top of high rocky ridge. Build
mound of stones 4 ft high, at this
point, as a witness to where line
crosses. No marks on stones.

Set a flag at this point and set my
instrument on line on a second

Survey of the Pima & Maricopa Indian
Reservation, Pinal County, Arizona.

81.74 ^{crat} High rocky ridge. Measure off the
 base, from front of instrument,
 5 chs. N. 51° E. to a point whence
 flag bor. S. 65° 40' E. making dist.
 from flag to instrument on line, 29.19 chs.
 50.00 Go point on line where instrument
 stands. Run back on line 1.24 chs. and at
 Build mound of stones 3 ft high
 to mark the 4th mile westerly,
 on N. boundary of Reservation.
 No marks. No trees near.
 Land over high mountain ridges
 Rocky and rough.

From monument at end of the 4th mile I run
 N. 72° 02' E. W. on 5th mile, westerly, on N. boundary
 var. 14° 39' East

26.00 Dry stream, 40 lks wide, bor. S. W.
 40.00 Build mound of stones 2 ft high
 for 1/2 mile cor. from which

Survey of the Pima & Maricopa Indian
Reservation, Pinal County, Arizona.

Set a Pale Verde, 4 in. dia. by 64 in. S. 45° E. 61 lbs. dist.
Mark tree, P. M. D. R. 1/2

80.00 Build mound of stones 3 ft high for
mile cor. from which

A Pale Verde, 4 in. dia. by S. 14 1/2° W. 67 lbs. dist.

do. 4 " " " N. 45 1/2° W. 128 " "

Mark trees, P. M. D. R. 5 W.

Cor. near foot of S. W. slope of rocky hill,
land hilly, broken and stony. Scatter-
ing trees.

N. 74° 26' W. at 6th mile, mostly on N. boundary
var. 14° 39' East

10.00 Leave hills and enter lower ground.

40.00 Set a post, 4 ft long, 3 in. sq. d. 1 1/2 ft in the
ground, and build mound of stones

2 ft high, for 1/2 mile cor. from which
A Pale Verde, 6 in. dia. by S. 15° E. 123 lbs. dist.

Mark post & tree, P. M. D. R. 1/2

80.00 Set a post, 4 ft long, 3 in. sq. d. 1 1/2 ft in

Survey of the Pima & Maricopa Indian
Reservation, Pinal County, Arizona

35. the ground, drive charred stake and
build mound of earth 2 ft high with
2 pits on line E. and W. for 1/2 mile
cor. from which

A Pale Fire, 3 in. dia. hrs. S. 85 1/2° E. 151 lbs. dist.

do. 9 " " " S. 51 1/2° E. 331 " "

Mark post & tree, P. M. I. R. C. W.

Land uneven, stony on E. Scattering
trees.

N. 74° 26' W. on 1/2 mile, westerly, on N. boundary
var. 114° 39' East.

16.00 Dry stream, 40 lbs. wide, hrs. S. W.

40.00 Set a post, 4 ft long, 3 in. sq. & 14 ft in the
ground, drive charred stake and build
mound of earth 2 ft high, with 2 pits on line
E. and W. for 1/2 mile cor. from which

A Pale Fire, 9 in. dia. hrs. N. 10° W. 192 lbs. dist.

Mark post & tree, P. M. I. R. 1/2.

60.00 Road hrs. N. W.

Survey of the Pima & Maricopa Indian
Reservation, Pinal County, Arizona.

Ps. Continued.

80.00 Set a post, 4 ft long, 3 in. sqd. 1 1/2 ft. in
the ground, drive charred stake
and build mound of earth 2 ft.
high, with 2 pits on line E. and
W. for mile cor. from which
Amesquite, 4 in. dia. br. S. 14 3/4° W. 100 lbs. dist.
do. 8 " " " S. 48° W. 112 " "
Mark post & trees, P. M. D. R. 7. W.
Land nearly flat. Scattering trees.

N. 74° 26' W. on 8th mile, westerly, on N. boundary
var. 14° 39' East

40.00 Set a post, 4 ft long, 3 in. sqd. 1 1/2 ft. in the
ground, drive charred stake and build
mound of earth 2 ft. high, with 2 pits
on line, E. and W. for 1/2 mile cor. from which
Amesquite, 12 in. dia. br. S. 50° E. 39 lbs. dist.
Mark post & trees, P. M. D. R. 1/2.

80.00 Set a post, 4 ft long, 3 in. sqd. 1 1/2 ft. in the

Summary of the Pima & Maricopa Indian
Reservation, Pinal County, Arizona.

P. ground, drive charred stake and build
mound of earth 2 ft high, with 2 pits on
line, E. and W. for mile cor. from which
Succupite, 8 in. dia. br., S. 53 1/2° W., 57 lks. dist.
do. 9 " " " S. 58 1/2° W., 49 " "
Mark post & tree, P. M. D. R. 5. W.
Land flat. Scattering trees.

N. 74° 26' W. on 9th mile, westerly, on N. boundary
var. 14° 39' East.

14.00 Road runs N. W.

40.00 Set a post, 4 ft long, 3 in. sqd., 1 1/2 ft in the
ground, drive charred stake and build
mound of earth 2 ft high, with 2 pits on line
E. and W. for 1/2 mile cor., from which
Succupite, 10 in. dia. br., N. 60° E. 6 lks. dist.
Mark post & tree, P. M. D. R. 1/2.

80.00 Set a post, 4 ft long, 3 in. sqd., 1 1/2 ft in the
ground, drive charred stake and build
mound of earth 2 ft high, with 2 pits on

Survey of the Pima & Maricopa Indian
Reservation, Pinal County, Arizona.

Ln. line E. and W. for mile cor. from which
Amesquite, 15 in. dia. br. S. $36\frac{1}{2}^{\circ}$ W. 54 lbs. dist.
do. 12 " " " N. $74\frac{1}{2}^{\circ}$ E. 79 " "
Mark post & trees, P. M. D. R. 9. W.
Land flat. Some mesquite timber

N. $74^{\circ} 26'$ W. on 10th mile, mostly, on N. boundary
var. $14^{\circ} 39'$ East

40.00 Set a post, 4 ft. long, 3 in. sq. d. 1 $\frac{1}{2}$ ft. in
the ground, drive charred stake & build
mound of earth 2 ft. high, with 2 pits
on line E. and W. for $\frac{1}{2}$ mile cor. from which
A Mesquite, 9 in. dia. br. S. $43\frac{3}{4}^{\circ}$ W. 55 lbs. dist.
Mark post & trees, P. M. D. R. 12.

80.00 Set a post, 4 ft. long, 3 in. sq. d. 1 $\frac{1}{2}$ ft. in the ground,
drive charred stake & build mound of earth
2 ft. high, with 2 pits on line E. and W.
for mile cor. from which
Amesquite, 12 in. dia. br. S. 29° W. 73 lbs. dist.
do. 8 " " " S. 74° E. 100 " "

Survey of the Pima & Maricopa Indian
Reservation, Pinal County, Arizona.

Chs. Mark post & trees, P.M. D. R. 10 N.
Land flat. Some mesquite timber & brush.

S. $4^{\circ} 26' N.$ on 11th mile, westerly, on N. boundary
var. $14^{\circ} 39' East$.

46.00 Set a post, 4 ft long, 3 in. sq. d. $1\frac{1}{2}$ ft in the
ground, drive charred stake & build mound of
earth 2 ft high, with 2 pits on line E and
W. for $\frac{1}{2}$ mile cor. from which
A mesquite, 12 in dia. br. N. $78^{\circ} W.$ 167 lvs. dist.
Mark post & trees, P.M. D. R. $1\frac{1}{2}$.

80.00 Set a post, 4 ft long, 3 in. sq. d. $1\frac{1}{2}$ ft in the
ground, drive charred stake & build mound
of earth 2 ft high, with 2 pits on line E and
west, for mile cor. from which
A mesquite, 8 in dia. br. S. $44^{\circ} E.$ 96 lvs. dist.

do. 8 " " " S. $13^{\circ} 14' N.$ 109 " "
Mark post & trees, P.M. D. R. 11 N.
Land flat. Mesquite timber.

Survey of Pima & Maricopa Indian
Reservation, Pinal County, Arizona

Chs. N. 74° 26' W. on 12th mile, westerly, on N. boundary
var. 14° 39' East

46.00 Set a post, 4 ft. long, 3 in. sqd. 1/2 ft. in the
ground, drive charred stake and build
mound of earth 2 ft high with 2 pit on line E.
& W. for 1/2 mile cor. from which
Mesquite, 12 in. dia. br. N. 84° W. 1/2 ls. dist
Mark post & tree, P. M. D. R. 1/2.

76.00 Bank bordering the Gila river, to which
bank the river rises in high water.

80.00 Set a post temporarily, until con-
nection is made from the west -
for the N. W. cor. of the eastern portion
of the reservation.

Land somewhat uneven. Mesquite
trees and brush. January 13, 1876.

In order to secure more correct align-
ment and measurement, I return
to the initial point at Sweet

Survey of the Pima & Maricopa Indian Reservation, Pinal County, Arizona

P. Water, and starting again from my initial point there, I run westerly along the south boundary of the western portion of the reservation, as follows.

N. $74^{\circ}26'$ W. on 1st mile, westerly, on S. boundary N. end.

var. $14^{\circ}39'$ East

As per Burt's improved solar compass.

9.00 Old road cross. N. W.

40.00 Set a post, 4 ft long, 3 in. sqd. $1\frac{1}{2}$ ft in the ground, drive charred stake & build mound of earth 2 ft high, with 2 pits on line E. and W. for $\frac{1}{2}$ mile cor. from which Armesquite, 6 in. dia. has N. 40° E. 356 lbs. dist. Mark post & tree, P. M. D. R. $\frac{1}{2}$.

80.00 Set a post, 4 ft long, 3 in. sqd. $1\frac{1}{2}$ ft in the ground, drive charred stake & build mound of earth 2 ft high, with 2 pits on line E. and W. for mile cor. Mark Post, P. M. D. R. 1 W. for 1st mile running westerly on S. boundary, N. end of Reservation. No trees near land flat. Some brush.

Survey of the Pima & Maricopa Indian
Reservation, Pinal County, Arizona.

Chs. N. 74° 26' W. on 3 mile, westerly, on S. boundary, N. end.

var. 114° 39' East

40.00 Set a post, 4 ft long, 3 in. sqd. 1 1/2 ft in the
ground. Drive charred stake & build mound
of earth 2 ft high, with 2 pits on line E and
W. for 1/2 mile cor. from which

Amesquite, 4 in dia. br., S. 19 3/4° E. 174 lbs. dist.
Mark post & tree P. M. D. R. 1/2.

80.00 Set a post, 4 ft long, 3 in. sqd. 1 1/2 ft in the
ground. Drive charred stake and build
mound of earth 2 ft high, with 2 pits on
line E. and W. for mile cor. from which

Amesquite, 3 in dia. br. N. 1 1/2° E. 154 lbs. dist.
No other tree near.

Mark post & tree, P. M. D. R. 2, W.
Land flat. Some brush.

N. 74° 26' W. on 3 mile, westerly, on S. boundary, N. end.

var. 114° 39' East

40.00 Set a post, 4 ft long, 3 in. sqd. 1 1/2 ft in

Survey of Pima & Maricopa Indian
Reservation, Pinal County, Arizona.

Set the ground, drive charred stake and build mound of earth 2 ft high, with 2 pits on line, E. and W. and mark post. P. M. D. R. 1/2. for half mile post. No trees near.
74.00 Stage Road runs N. of W.

80.00 Set a post, 4 ft long 3 in. sq. 1 1/2 ft. on the ground, drive charred stake and build mound of earth 2 ft high, with 2 pits on line E. and west, and mark post P. M. D. R. 3/4. No trees near. Land flat. No timber

N. 74° 26' W. on 4th mile, westerly, on S. boundary, N. end.
var. 14° 39' East

40.00 Set a post, 4 ft long, 3 in. sq. 1 1/2 ft. on the ground, drive charred stake and build mound of earth 2 ft high, with 2 pits on line E. and W. for 1/2 mile post. Mark post P. M. D. R. 1/2. No trees near.

80.00 Set a post, 4 ft long, 3 in. sq. 1 1/2 ft.

Survey of the Pima & Maricopa Indian Reservation, Pinal County, Arizona

Set in the ground, drive charred stake and build mound of earth 2 ft high with 2 pits on line E. and W. for mile cor. Mark Post, P. M. D. R. 4 W. No trees near. Land flat. No timber.

N. 74° 26' W. on 5th mile, westerly, on S. boundary, N. end, var. 14° 39' East

40.00 Set a post, 4 ft long, 3 in. sqd, 1 1/2 ft in the ground, drive charred stake & build mound of earth 2 ft high, with 2 pits on line E. and W. for 1/2 mile cor. Mark post, P. M. D. R. 7. No trees near.

50.00 Set a post, 4 ft long, 3 in. sqd, 1 1/2 ft in the ground, drive charred stake & build mound of earth 2 ft high, with 2 pits on line E. and W. for mile cor. Mark post, P. M. D. R. 5 W. No trees near. The center of the top of the large mound called "Casa Blanca", brs. from this cor. S. 46° E. 9.40 chs. dist. Land uneven near W. No timber.

Survey of the Pima & Maricopa Indian
Reservation, Pinal County, Arizona.

- P. N. 74th 26th W. on 6th mile westerly, on S. boundary, N. and
 var. 114th 39' East
- 25.00 Road base, S. W. and N. E.
- 34.00 House of Richards about 6 chs. S. of line
- 36.00 N. E. cor. a ferral, 50 lbs. S. of line.
- 40.00 Set a post, 4 ft long, 3 in. sq. 1 1/2 ft in the
 ground, drive charred stake and build mound
 of earth 2 ft high with 2 pits on line E.
 and W. for 1/2 mile cor. Mark post,
 P. M. D. R. 1/2. No trees near.
 Richards House, (the N. W. cor. of it,)
 bro. S. 37th 34' E. about 10 chs. dist
- 50.00 Road base, S. W.
- 80.00 Set a post, 4 ft long, 3 in. sq. 1 1/2 ft in
 the ground, drive charred stake and
 build mound of earth 2 ft high, with
 2 pits on line E. and W. for mile cor.
 Mark post P. M. D. R. 6. N.
 No trees near. Land flat. No timber
 or brush.

Survey of the Pima & Maricopa Indian
Reservation, Pinal County, Arizona

Chs. N. 74° 26' W. on 7th mile, westerly, on S. boundary N. End.
var. 14° 39' East.

40.00 Set a post, 4 ft. long, 3 in. sq. d. 1 1/2 ft. in the
ground, drive charred stake & build mound
of earth 2 ft. high, with 2 pits on line E. and
W. for 1/2 mile cor. Mark post. P. M. D. R. 1/2. No trees near.

50.00 Set a post, 4 ft. long, 3 in. sq. d. 1 1/2 ft. in the
ground, drive charred stake and build
mound of earth 2 ft. high, with 2 pits
on line E. and W. for mile cor. Mark
post. P. M. D. R. 7/8. No trees near.
Land flat. No timber or brush.

N. 74° 26' W. on 8th mile, westerly, on S. boundary, N. End.
var. 14° 39' East

110.00 Set a post, 4 ft. long, 3 in. sq. d. 1 1/2 ft. in the ground,
drive charred stake & build mound of earth
2 ft. high with 2 pits on line E. and W. for
1/2 mile cor. from which

Survey of the Pima & Maricopa Indian
Reservations, Pinal County, Arizona.

No. Mesquite, 2 1/2 in. dia. brs. N. 91 1/2° E. 48 lbs. dist.
Mark post & tree, P. M. I. R. 1/2.

53.00 Road brs. N. W.

80.00 Set a post, 4 ft. long. 3 in. sq'd. 1 1/2 ft.
in the ground, drive charred stake and
build mound of earth 2 ft. high, with
2 pits on line E. and W. for mile cor.
from which

Mesquite, 4 in. dia. brs. S. 15° W. 242 lbs. dist.
Another tree near Mark post and
tree, P. M. I. R. S. W.

Land flat. Scattering mesquite trees.

N. 74° 26' W. on 9th mile, westerly, on S. boundary, W. end.
var. 14° 39' East.

1.00 Road runs N. W.

40.00 Set a post, 4 ft. 3 in. sq'd. 1 1/2 ft. in the
ground, drive charred stake and build
mound of earth 2 ft. high with 2 pits
on line E. and W. for 1/2 mile cor.

Survey of the Pima & Maricopa Indian
Reservations, Pinal County, Arizona

80.00 Set a post, P. M. I. R. $\frac{1}{2}$, Notice near
Set a post, 4 ft long, 3 in. sqd. $1\frac{1}{2}$ ft in the
ground, drive charred stake and build
mound of earth 2 ft high, with 2 pits
on line Grand N. for mile cor.
Mark post, P. M. I. R. 9. N.
No trees near.

Land flat. No timber.

January 14. 1876.

N. $74^{\circ}26'$ W. on 10th mile, westerly, on S. boundary. N. end.
var. $14^{\circ}39'$ East

40.00 Set a post, 4 ft long, 3 in. sqd. $1\frac{1}{2}$ ft in the
ground, drive charred stake and build
mound of earth 2 ft high, with 2 pits on
line Grand N. for $\frac{1}{2}$ mile cor. from which
Arcequite, 3 in. dia. base West, 139 cu. dist
Mark post & tree P. M. I. R. $\frac{1}{2}$.

70.00 Road base S. W.

80.00 Set a post, 4 ft long, 3 in. sqd. $1\frac{1}{2}$ ft in the
ground, drive charred stake and build

Survey of the Pima & Maricopa Indian
Reservations, Pinal County, Arizona.

75. mound of earth 2 ft high, with 2 pits on
line E and W. for mile cor. from which
Amesquite, 3 in dia. tree. N. $85\frac{1}{2}^{\circ}$ E. 140 lbs. dist
to 4 " " N. 54° E. 42 " "
Mark post & trees, P. M. I. R. 10. W.
Land flat. A few trees.

N. $74^{\circ} 26'$ W. on 11th mile, westerly, on S. boundary, W. end.
var. $14^{\circ} 39'$ East.

40.00 Set a post, 4 ft long, 3 in. sqd. 1 1/2 ft in the
ground, drive charred stake & build mound
of earth 2 ft high, with 2 pits on line E and
W. for 1/2 mile cor. No tree near.
Mark Post, P. M. I. R. 1/2.

80.00 Set a post, 4 ft long, 3 in. sqd. 1 1/2 ft in
the ground, drive charred stake & build mound of earth
2 ft high, with 2 pits on line E and W. for mile cor.
No trees near. Mark post, P. M. I. R. 11 W.
Land flat. No timber.

Survey of the Pima & Maricopa Indian
Reservation, Pinal County, Arizona

Chs. N. $74^{\circ}26'N$. on 12th mile, wately, on S. boundary. N. end.
var. $14^{\circ}39'$ East.

40.00 Set a post, 4 ft long, 3 in. sq. d. $1\frac{1}{2}$ ft in the ground,
X two charred stakes & build mound of earth 2 ft
high, with 2 pits on line E. and W. for 1/2 mile cor.
Mark post, P. M. & R. 1/2. No trees near.

53.00 Foot of the Sierra Blanca, on E. side,

60.00 To a point. - In order to secure better
measurement, I offset N. $15\frac{1}{2}'E$. 11 chs.,
along ridge running N.E. Thence from
N. $74^{\circ}26'N$. and counting the 60 chs., - at

80.00 I set back to line S. $15\frac{1}{2}'W$. 11 chs., and
X set a post, 4 ft long, 3 in. sq. d. $1\frac{1}{2}$ ft in the
ground, and build mound of stones
2 ft high, for mile cor. from which

A Pale Verde, 6 in. dia. bears N. $40^{\circ}E$. 14 lvs. dist.

do 8 " " " S. $84\frac{1}{2}'W$. 10 " "

Mark post & trees, P. M. & R. 1/2. N.

Cor. on N. slope of rocky ridge.

Land mountain on N.

Survey of the Puna & Maricopa Indian
Reservation, Pinal County, Arizona.

Go. Return to the offset line and continue -
N. $74^{\circ}26'N$. on 13th mile, westerly, on S. boundary, on N. end.
var. $114^{\circ}39'$ East.

40.00 Set back to line, S. $15^{\circ}42'N$. 11 chs. Set a post,
14 ft long, 3 in sq. 1 1/2 ft in the ground, and build
mound of stone - 2 ft high for 1/2 mile cor.
from which

A Pal Verde, 4 in dia, 400, S. $15^{\circ}N$. 155 lbs. dist.
Mark post & tree. P. M. D. R. 1/2. This cor.
is on the W. slope of the Sierra Blanca.

According to the topography of the
map to which I make reference in the
beginning of my notes, - "Showing pro-
posed extensions" to reserve, &c., - the S. W.
cor. of the reservation is on the W. slope of
the Sierra Blanca; but I can find no
evidence on the ground of any mon-
ument on the W. slope of said mountain.
So, from the 40 chs. cor. on the ^{13th mile on the} S. boundary
of the western portion of the reservation,

Survey of the Pima & Maricopa Indian Reservation, Pinal County, Arizona

Thence I run northerly in the direction of the end
 line of the reservation, (with the hope of finding
 the N.W. cor.) as follows. Var. $14^{\circ}39'$ East
 N. $18^{\circ}38'$ W. on random line, and at 4 miles
 and 70.15 chs., (which is the length of the
 end line as found on the East,) I set a
 temporary cor. Thence I run N. $74^{\circ}26'$ W.
 on the course of the N. boundary of the reserve,
 and at 32.00 chs. arrive at a point
 100 lbs. southerly, (at right angles to the
 line run,) from the old N.W. cor. of the
 reservation, marked by a post and
 mound of earth, the post showing the
 marks "P. + M. Res. 59", on it.
 The map before referred to is therefore
 in error in placing the S.W. cor. on the
 N. slope of the Sierra Blanca. I return
 to the point 40 chs. cor. on 13th mile on
 S. boundary of western portion of reserve,
 and run 32 chs. further on same line, as follows:

Survey of the Pinal & Maricopa Indian
Reservation, Pinal County, Arizona

Rs. N. $74^{\circ}26'N$. continuation of 13th mile and
counting the 40 chs. already run, - at
42.00 establish the S.W. cor. of the reservation, X
by setting a post, 7 ft long, 6 in. sq'd.
18 inches in ground, and build
mound of earth 5 ft high, 12 ft dia.
at base, from which
Smeagule, 6 in dia. brs. N. $41^{\circ}74'E$. 126 lns. dist
do. 5 " " " N. $64^{\circ}74'N$. 336 " "
Mark post, "P. M. D. R. S. W. 76",
and the tree P. M. D. R. S. W.
January 15. 1876.

From the S.W. cor. of Reservation, so established,
Run along the W. end of Reservation, as follows:
N. $1838'N$. on 1st mile, northerly on W. end boundary,
was. $114^{\circ}39'$ East.
A few built improved solar Compass
40.00 Set a post, 7 ft long, 3 in. sq'd. $1\frac{1}{2}$ ft in the
ground, drive charred stick and build

Survey of the Pima & Maricopa Indian Reservation, Pinal County, Arizona.

72.00 Mound of earth 2 ft high, with 2 pit on line S. & N. for 1/2 mile cor. No trees near. Mark Post, P.M. D. R. 1/2.

72.00 Road hrs. N. W.

80.00 Set a post, 4 ft long, 3 in. sq'd. 1 1/2 ft in the ground, drive charred stake & build mound of earth 2 ft high, with 2 pit on line S. & N. for mile cor. No trees near. Mark post, P.M. D. R. 1. N. for 1st mile running northerly on W. end boundary of Reservation. Land level. Some brush. No timber.

N. 18° 38' W. on 2 mile, northerly, on W. end of Reservation. var. 14° 39' East

40.00 Set a post, 4 ft long 3 in. sq'd. 1 1/2 ft in the ground, drive charred stake and build mound of earth 2 ft high, taken from 2 pits on line S. and N. for half mile cor. from which

Survey of the Pima & Maricopa Indian Reservation, Pinal County, Arizona.

hs. A cottonwood 5 in. dia. brs. S. 47° E. 620 lbs. dist
Mark post & tree, P. M. I. R. 1/2
41.00 Ditch runs W.

80.00 Set a post, 4 ft long, 3 in. sqd. 1 1/2 ft in the
ground, drive charred stake and build mound
of earth 2 ft high, with 2 pits on line S. and
N. for mile cor. from which
A cottonwood, 30 in. dia. brs. N. 34° W. 270 lbs. dist
Mark post & tree, P. M. I. R. 2. N.
sand level, through some cultivated
fields.

N. 18° 38' W. on 3 mile, northerly, on W. end of Reservation
var. 14° 39' East

40.00 Set a post, 4 ft long, 3 in. sqd. 1 1/2 ft in the ground,
drive charred stake & build mound of earth
2 ft high, with 2 pits on line S. & N. for 1/2
mile cor. from which
A cottonwood, 8 in. dia. brs. South, 58 lbs. dist
Mark post & tree, P. M. I. R. 1/2.
This cor. is on the bank of the Gila river,

Survey of the Pima & Maricopa Indian
Reservation, Pinal County, Arizona.

- Chs. running N. W. I set a flag on line on
opposite bank, and measure off a base
line 100 lbs. S. $71^{\circ}22'$ W. to a point whence
flag bears N. $70^{\circ}37'$ W. which makes dist
across, 5.14 chs, or at
45. 14 On line on right & N. bank of Gila river. Set a post,
2 ft long, 3 in sq'd. 12 ft in the ground, drive
charred stake and build mound of earth 2 ft
high, taken from 1 pit on N. and mark
post, P. M. J. R.
50. 30 Ascend bank.
54. 00 Road runs S. E.
80. 00 This point comes in middle of road to
Camp McDowell. I set a witness cor.
50 lbs. S. ^{where} Set a post 7 ft long, 6 in. sq'd.
2 ft in the ground. Drive charred
stake and build mound of earth
5 ft high and 12 ft diam. at base,
with 2 pits on line S. & N. for mile cor.
on 3 mile N. on N. end boundary from which

Survey of the Pima & Maricopa Indian
Reservation, Pinal County, Arizona

1. Amesquite, 5 in. dia. br. N. 38° 1/2 W. 1415 lbs. dist.
Mark Post, P. M. D. R. 1/2 lb. and
tree, P. M. D. R.

The S. E. cor. of Morgan's station
house br. S. 85° 1/2 W. and is 439 lbs. dist.
Cottonwood & willow timber and brush
along river.

From the true point of 50 chs. on 3rd mile, which
comes in road, Drive

N. 18° 38' W. on 4th mile, northerly, on N. end Reservation
var. 114° 39' East

14.00 A Road br. N. W. and S. E.

40.00 Set a post, 4 ft long, 3 in. sq. d. 1 1/2 ft in the
ground, drive charred stake and build mound
of earth 2 ft high, with 2 ft on line S. and N.
for half mile cor. from which
Amesquite, 4 in. dia. br. S. 11° 1/2 W. 131 lbs. dist.
Mark post & tree, P. M. D. R. 1/2 lb.

20.00 Set a post, 4 ft long, 3 in. sq. d. 1 1/2 ft in

Survey of the Pima & Maricopa Indian Reservation, Pinal County, Arizona

38. The ground, driven charred stake $\frac{3}{4}$ build
mound of earth 2 ft high, with 2 ft on line
S. & N. for mile cor. from which
Mesquite, 10 in. dia. tree, N. $68^{\circ} 4' E$. 183 lbs. dist.
do. 9 " " " S. $10^{\circ} 2' N$. 190 " "
Mark Post & tree, P. M., D. R. 4. N.
Land level. Considerable mesquite
timber.

N. 1838 N. on 5th mile, northerly, on W. end Reservation.
var. $14^{\circ} 39' East$.

40.00 Set a post, 4 ft long, 3 in. sqd. $1\frac{1}{2}$ ft in the ground,
driven charred stake $\frac{3}{4}$ build mound of earth 2
ft high with 2 ft on line S. & N. for half
mile cor. from which

Mesquite, 20 in. dia. tree, N. $49^{\circ} 4' N$. 27 lbs. dist.
Mark post & tree, P. M., D. R. 1/2.

70.15 To a point 100 lbs. southerly from the
old N. W. cor. the point I before found.
As 4 miles and 70.15 chs. is the length
of the E. end boundary of the reservation,

Survey of the Pima & Maricopa Indian
Reservation, Pinal County, Arizona

At this point I establish the N. W. cor.
of the Reservation by setting a post 6
ft long, 6 in. sq'd, 2 ft in the ground,
and build mound of earth 4 ft
high, 10 ft dia. at base, from which
I measure, 5 in. dia. bar, N. $82\frac{1}{2}^{\circ}$ W. 41 lns. dist.
do. 12 " " " S. $53\frac{3}{4}^{\circ}$ E. 262 " "
Mark post, P.M. I. R. N. W. '76.
and trees P.M. I. R. N. W.

From the N. W. cor. of the Reservation as just
established, I run easterly along the
N. boundary of Reservation, as follows:
S. $74^{\circ}26'$ E.

var. $14^{\circ}36'$ East.

After Burt's improved solar compass,
and at

32.00 I set a post, (to correspond to post at same
distance easterly from S. W. cor. of reservation,

Survey of the Pima & Maricopa Indian
Reservation, Pinal County, Arizona

71.00 on S. boundary, $\frac{1}{4}$ ft. long, 3 in. eqd. $1\frac{1}{2}$ ft
in the ground, drive charred stake and
build mound of earth 2 ft high, with 2 pits
on line N. and E. No trees near.
Mark Post. P. M. I. R.

72.00 To correspond to the 10th mile post on S.
boundary towards W. end. I set a post,
 $\frac{1}{4}$ ft long, 3 in. eqd. $1\frac{1}{2}$ ft in the ground,
drive charred stake & build mound of
earth 2 ft high, with 2 pits on line N. and
E. and from which
I measured 8 in. dia. bar N. $64^{\circ} 12' E$. 209 lbs. dist.
Mark post & tree, P. M. I. R. 1. E.

$S. 74^{\circ} 26' E$. on 2nd mile, easterly, on N. boundary, W. end.
var. $14^{\circ} 36' East$

40.00 Set a post, $\frac{1}{4}$ ft long, 3 in. eqd. $1\frac{1}{2}$ ft in the
ground, drive charred stake and build
mound of earth 2 ft high, with 2 pits on line
N. and E. for $\frac{1}{2}$ mile cor. No trees near

BOOK 2009

Survey of the Pima & Maricopa Indian
Reservation, Pinal County, Arizona

6.00 Mark post, P. M. I. R. 1/2.
7.00 Set a post, 4 ft long, 3 in. sq'd. 1 1/2 ft in the
ground, drive charred stake and build
mound of earth 2 ft high, with 2 pits on
line N. and E. for mile cor. from which
Amesquite, 12 in. dia. br. N. 38 1/4° E. 27 ft less dist.
do, 10 " " " N. 42° W. 134 " "
Mark post & trees, P. M. I. R. 2. E.
Land flat. No timber of consequence on line.

S. 74 1/2° E. on 3 mile, easterly, on N. boundary, N. End.
var. 14° 36' East.

8.00 Road runs N. E.

10.00 Set a post, 4 ft long, 3 in. sq'd. 1 1/2 ft in the ground,
drive charred stake and build mound of
earth 2 ft high, with 2 pits on line N. and
E. for 1/2 mile cor. from which
Amesquite, 14 in. dia. br. S. 10° W. 17 ft less dist.
Mark post & tree, P. M. I. R. 1/2.

11.00 Set a post, 4 ft long, 3 in. sq'd. 1 1/2 ft

BOOK 2009

Survey of the Pima & Maricopa Indian
Reservation, Pinal County, Arizona

Set in the ground, drive charred stake and
build mound of earth 2 ft high, with
2 pits on line N. and E. for mile cor. from which
Amesquite, 9 in dia. br. S. $29\frac{1}{2}^{\circ}$ E. 107 lbs. dist.
No other trees near. Mark post and
tree, P. M. D. R. 3. E.
Land flat. No timber & of consequence.

S. $74^{\circ} 26' E$ on 4th mile, easterly on N. boundary. N. end,
var. 14th 36' East

40.00 Set a post, 4 ft long, 3 in. sq. d. 1 1/2 ft in the
ground, drive charred stake & build mound
of earth 2 ft high, with 2 pits on line N. and
E. for 1/2 mile cor. from which
Amesquite, 10 in dia. br. S. $82\frac{1}{4}^{\circ}$ N. 17 lbs. dist.
Mark post & tree, P. M. D. R. 1/2.

80.00 Set a post, 4 ft long, 3 in. sq. d. 1 1/2 ft in the
ground, drive charred stake and build
mound of earth 2 ft high, with 2 pits
on line N. and E. for mile cor. from which

Survey of the Pima & Maricopa Indian
Reservation, Pinal County, Arizona

Chs. Amesquite, 12 in. dia. br., S. 89° W. 229 lbs. dist
do. 4 " " " N. 47 1/2° W. 347 "
Mark post & trees, P. M. I. R. 4 E.
Land flat. Some mesquite timber
January 17, 1876.

S. 74° 26' E. on 5th mile, easterly, on N. boundary N. end.
var. 114° 36' East.

40.00 Set a post, 4 ft long, 3 in. sq. 1 1/2 ft in the
ground, drive charred stake and build
mound of earth 2 ft high with 2 pits on
line N. and E. for 1/2 mile cor. from which
Amesquite, 5 in. dia. br., S. 39° W. 53 lbs. dist
Mark post & tree, P. M. I. R. 7 1/2.

80.00 Set a post, 4 ft long, 3 in. sq. 1 1/2 ft in the ground,
drive charred stake & build mound of earth 2 ft high
with 2 pits on line N. & E. for mile cor. from which
Amesquite 7 in. dia. br., N. 88 1/2° W. 162 lbs. dist
do. 5 " " " S. 42° W. 52 " "
Mark post and trees, P. M. I. R. 5 E.
Land flat. Some mesquite timber.

Survey of the Pima Maricopa Indian Reservation, Pinal County, Arizona.

No. S. $74^{\circ}26'E$. on 6^{th} mile, easterly, on N. boundary, N. end.
var. $14^{\circ}36'$ East

40.00 Set a post, $4\frac{1}{2}$ ft long, 3 in. sq. d. $1\frac{1}{2}$ ft in the ground, drive charred stake and build mound of earth 2 ft high with 2 pit on line N. and E. for $\frac{1}{2}$ mile cor. No trees near. Mark post, P. M. D. R. $1\frac{1}{2}$.

80.00 Set a post, $4\frac{1}{2}$ ft long, 3 in. sq. d. $1\frac{1}{2}$ ft in the ground, drive charred stake and build mound of earth 2 ft high, with 2 pit on line N. and E. for mile cor. from which Mesquite, *Caidia* br S. $59^{\circ}E$. 188 lbs. dist. do. 4 " " S. $39^{\circ}W$. 69 " " Mark post & trees, P. M. D. R. 6 E. Land flat. Mesquite trees.

S. $74^{\circ}26'E$. on 7^{th} mile, easterly, on N. boundary, N. end.
var. $14^{\circ}36'$ East

40.00 Set a post, $4\frac{1}{2}$ ft long, 3 in. sq. d. $1\frac{1}{2}$ ft in the ground, drive charred stake & build

Survey of the Pima & Maricopa Indian
Reservation, Pinal County, Arizona.

- Es. mound of earth 2 ft high, with 2 pits on line
N. 36° E. for $\frac{1}{2}$ mile cor. from which
A Mesquite, 15 in. dia. br. S. $38\frac{1}{4}^{\circ}$ E. 17 lbs. dist.
Mark post & tree, P. M. D. R. $\frac{1}{2}$.
- 80.00 Set a post, 4 ft long. 3 in. sqd. $1\frac{1}{2}$ ft in the ground.
drive charred stake & build mound of earth
2 ft high, with 2 pits on line, N. 36° E. for mile cor. from which
A mesquite, 3 in. dia. br. S. 11° E. 59 lbs. dist.
Mark post & tree, P. M. D. R. 7° E.
North tree near. Land flat. Some
Mesquite
-
- S. $74^{\circ} 26'$ E. on 8^{th} mile, east side, on N. boundary, N. end.
var. $14^{\circ} 36'$ East.
- 40.00 Set a post, 4 ft long. 3 in. sqd. $1\frac{1}{2}$ ft in the ground.
drive charred stake and build mound
of earth 2 ft high, with 2 pits on line N. and E.
for $\frac{1}{2}$ mile cor. from which
A mesquite, 8 in. dia. br. S. $31\frac{1}{2}^{\circ}$ N. 123 lbs. dist.
Mark post & tree, P. M. D. R. $\frac{1}{2}$.
- 80.00 Set a post, 4 ft long. 3 in. sqd. $1\frac{1}{2}$ ft in

Survey of the Pima & Maricopa Ind
Reservations, Pinal County, Arizona

Ch. the ground, drive charred stake & build mound of earth 2 ft high, with 2 pits on line N. and E. for mile cor. from which Amesquite, 12 in dia. brs. S. $53^{\circ}14'$ W. 22 rods dist. No other tree near. Mark Post & tree, P.M.D.R. S.E. Land flat. Some mesquite trees.

S. $44^{\circ}26'$ E. on 9th mile, easterly, on N. boundary, N. end
var. $14^{\circ}36'$ East

40.00 Set a post 4 ft long, 3 in. sq. d. 1 1/2 ft in the ground, drive charred stake & build mound of earth 2 ft high, with 2 pits on line N. & E. for 1/2 mile cor. No tree near. Mark post, P.M.D.R. 1/2

80.00 Set a post 4 ft long, 3 in. sq. d. 1 1/2 ft in the ground, drive charred stake, & build mound of earth 2 ft high, with 2 pits on line N. and E. for mile cor. No trees near. Mark post, P.M.D.R. S.E.
Land flat. Some mesquite trees, and brush.

Survey of the Pima & Maricopa Indian
Reservations Pinal County, Arizona

R. S. $74^{\circ}26'E$ on 10th mile, Easterly, on N. boundary, N. end.
var. $14^{\circ}36'$ East.

40.00 Set a post, 4 ft long, 3 in. sq. 1 1/2 ft in
the ground, drive charred stake & build mound of
earth 2 ft high, with 2 pits on line N. & E. for
half mile cor. from which

Acacia quite, 3 in. dia. br. S. $57^{\circ}E$. 220 lbs. dist.
Mark post tree, P. M. D. R. 7 1/2.

80.00 Set a post, 4 ft long, 3 in. sq. 1 1/2 ft in the
ground, drive charred stake & build mound
of earth 2 ft high, with 2 pits on line,
N. and E. for mile cor. No trees near
Mark post, P. M. D. R. 10. E.
Land flat. Some brush.

S. $74^{\circ}26'E$ on 11th mile, Easterly, on N. boundary, N. end.
var. $14^{\circ}36'$ East.

40.00 Set a post, 4 ft long, 3 in. sq. 1 1/2 ft in the
ground, drive charred stake & build mound
of earth 2 ft high, with 2 pits on line N. & E.

Survey of Pima & Maricopa Indian
Reservation, Pinal County, Arizona

80.00 Set a post, 4 ft. long, 3 in. sq. 1 1/2 ft. in the
ground, drive charred stake and build
mound of earth 2 ft. high with 2 pits on line
N. 9° E. for 1/2 mile cor. from which
A mesquite, 9 in. dia. br., N. 20° E. 280 lbs. dist.
Mark post & tree, P. M. D. R. 1/2.

80.00 Set a post, 4 ft. long, 3 in. sq. 1 1/2 ft. in the
ground, drive charred stake and build
mound of earth 2 ft. high with 2 pits on line
N. 9° E. for 1/2 mile cor. from which
A mesquite, 8 in. dia. br., S. 15 1/4° W. 145 lbs. dist.
No other trees near. Mark post and
tree, P. M. D. R. 11. E.

Land flat. Scattering mesquite trees.

S. 74° 26' E. on 12th mile, easterly, on N. boundary, N. end.
var. 124° 36' East

40.00 Set a post, 4 ft. long, 3 in. sq. 1 1/2 ft. in the
ground, drive charred stake and build
mound of earth 2 ft. high, with 2 pits
on line N. and E. for 1/2 mile cor. from which
A mesquite, 6 in. dia. br., N. 36° E. 146 lbs. dist.
Mark post & tree, P. M. D. R. 1/2.

Survey of the Pima & Maricopa Indian Reservation, Pinal County, Arizona

Ps. Continued -

80.00 Set a post, 4 ft long, 3 in sqd. 1 1/2 ft in the ground, drive charred stakes and build mound of earth 7 ft high, with 2 pits on line N. and E. for mile cor. No trees near. Mark post, P. M. I. R. 12. E. Land flat. Scattering mesquite trees.

S. 74° 26' E. on 1/2 mile. East to N. boundary. Wind. var. 14° 36' East.

40.00 Set a post, 4 ft long, 3 in sqd. 1 1/2 ft in the ground, drive charred stakes & build mound of earth 7 ft high, with 2 pits on line N. and E. for 1/2 mile cor. from which a Mesquite, 5 in dia. br. N. 2° E. 370 ft distant. Mark post & tree, P. M. I. R. 1/2.

80.00 Set a post, 7 ft long, 6 in sqd. 2 ft in the ground, and build mound of earth 4 1/2 ft high, 10 ft dia. at base, for N. E. cor. of the western portion of the

Survey of the Pinal & Maricopa Indian
Reservation, Pinal County, Arizona

Res. Reservation. No trees near.
Mark Post P. M. J. R. 13. E.
Two rocky hills stand S. W. from
this cor. about a mile dist.
Land flat. Some mesquite trees.
January 18. 1876.

From the N. E. cor. of the western portion
of the reservation as just established
I run southerly along E. end of
western portion, as follows:
S. $18^{\circ} 38' E.$ on 1st mile southerly.

var. $14^{\circ} 36' East$

40.00 Set a post, 4 ft long. 3 in sq d, 1 1/2 ft in the
ground. drive charred stake and
build mound of earth 2 ft high with
spit on line N. and S. for half mile
cor. from which

run mesquite 12 in dia. on S. $43\frac{1}{2}^{\circ} E.$ 84 lbs. dist.
Mark Post & tree, P. M. J. R. 12.

Survey of the Pima & Maricopa
Indian Reservation, Pinal County, Arizona

Continued

0.00 Road brs. N. E.

0.00 Set a post, 4 ft. long, 3 in. sq. d. 1 1/2 ft.
in the ground, drive charred stake and
build mound of earth 2 ft. high, with
2 pits on line N. and S. for mile cor. from which
Mesquite, 7 in. dia. brs. S. 71° E. 46 lvs. dist.
do. 8 " " " S. 68 1/2° W. 112 " "

Mark post & trees P. M. D. R. 15.

Land flat. Mesquite timber & brush.

S. 1838 E. on 2nd Mile southerly.

var. 14° 36' East

5.00 Band bordering the Gila River, brs. N. W.

8.00 Intersect the N. boundary of the Eastern
portion of the Reservation at 1.65 chs
easterly from the post set temporarily
for the N. W. cor. of the Eastern portion of
the reservation. Set a post 4 ft. long
4 in. sq. d. at point of intersection for

Survey of the Pima & Maricopa
Indian Reservation, Pinal County, Arizona.

No. the cor. No trees near.

This is near the river bank, and is on ground which is overflowed at high water. So I set a witness monument to this cor., 5 chs. easterly, on N. line of eastern portion of reservation, by setting a post 6 ft long, 6 in. sq. 2 ft in the ground, and build mound of earth 4 ft high, 10 ft in dia. at base.

No trees near. Mark Post. P. M.

D. R. '76. Witness cor.

This closes the survey.

January 19, 1876.

General Description

This reservation extends for a little more than twenty five miles along either side of the Gila river, from a

Survey of the Pima & Maricopa Indian
Reservation, Pinal County, Arizona.

General Description. Continued
short distance west of the old
Blackwater Station to within about
two miles and a half of and east of
Maricopa Wells. The river bottom
which it covers is very fertile and
yields abundantly under the cul-
tivation of the Indians.
The Indians have a considerable
amount of land under cultivation
but there is still much that has not
yet been utilized.

Cottonwood, willow
and mesquite timber and
brush are found along
the river and through
the bottoms, furnishing
firewood.

Theodore F. White
U.S. Deputy Surveyor.

71
List of Names.

BOOK 2009

A List of the Names of Individuals employed
to assist in running, measuring, or marking the
lines and corners described in the foregoing Field
Notes of the survey of the exterior
boundary lines of the
Pima and Maricopa
Indian Reservation, Pinal
County, Arizona.

Showing the respective capacities in which they
acted.

Urban Bissard Chainman.

R. A. Pasquary Chainman,

Fred. C. Jones Axeman.

Wright H. Aubrey Flagman.

Final Oath of Assistants.

We hereby certify that we assisted Theodore
F. White U. S. Deputy Surveyor, in
 surveying the exterior boundary
lines of the Pima and
Maricopa Indian Res-
ervation, Pinal county
Arizona.

and that said Survey has been in all respects, to
 the best of our knowledge and belief, well and
 faithfully executed, and the boundary monuments
 planted according to the instructions furnished by
 the Surveyor-General.

Urbain Bernard Chairman.
R. A. Targues Chainman,
Wm. S. Jones Axeman.
Wright H. Aubrey Flagman.

Sworn to and subscribed before me, this 22
 day of January, 1876

William J. Osborn
 Notary Public

Final Oath of Deputy Surveyor.

I, Theodore F. White

U. S. Deputy Surveyor, do solemnly swear that in pursuance of a contract with John Wasson, United States Surveyor-General for Arizona, bearing date the First day of November

1875 I have well, faithfully and truly, in my own proper person, and in strict conformity with the instructions furnished by the Surveyor-General, the Surveying Manual, and the laws of the United States, surveyed all those portions of the

exterior boundary lines of the Pima and Maricopa Indian Reservation, Pinal County, Arizona.

as are represented in the foregoing Field Notes as having been surveyed under my directions; and I do further solemnly swear that all the corners of said surveys have been established and perpetuated in strict accordance with the Surveying Manual and printed instructions, and also in accordance with the additional requirements con-

tained in circular instructions from the U. S. Surveyor-General for Arizona, dated September 1, 1873, regarding the establishment of corner boundaries of public surveys, and that the foregoing are the true and original Field Notes of such surveys.

Theodore F. White

Deputy Surveyor.

Sworn to and subscribed before me, this 22^o day of January, 1876

William J. Osborn
Notary Public



U. S. Surveyor General's Office,

TUCSON, ARIZONA,

September 17, 1876.

The foregoing Field Notes of the Survey of the

Outboundaries of the
Pima and Maricopa
Indian Reservation,

Of the Gila and Salt River Base and Meridian, Arizona, execu-
ted by Theodore T. White,

Deputy Surveyor, under his contract of the

17th

day of November, 1875, having been

critically examined and the necessary corrections and explana-
tions made, the said Field Notes and the surveys they describe
are hereby approved.

John Mason.

Surveyor General.