

Book 2021

47

2021

Sent to U.S. G. 4-21/93

BOOK 2021

BOOK 2021

4-671

2021

FIELD NOTES

2021

GENERAL LAND OFFICE

SUBDIVISION LINES
of

NOVARDE MIL. RESERVATION

Surveyed by

Samuel Drummond U.S. G.S.

Under His Contract No. 200.

Dated Oct. 31st 1891

Sur. Commenced Dec. 26

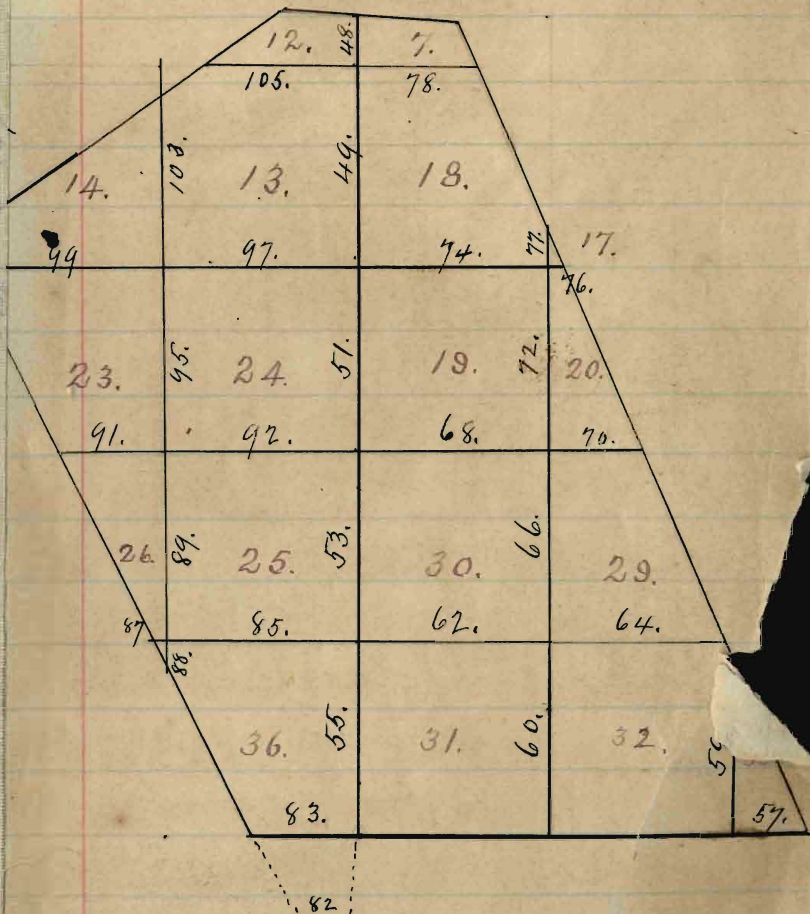
" Completed Jan 2^d 1892

2021

57.

1/2

Index. T Book No. 2021



FRACT. Tps. 14, N Rs. 4^{and} 5. E.

Camp Verde Military Res'n.

Township Exterior Camp

- chains From the Cor. to Sp. 13.
 + 14 N R. 4.^{and} 5 E. as recently
 re-established by me.
 I run North on a random
 line. bet. Ranges. 4.^{and} 5. E.
 Va. $13^{\circ}42'E$
- 326.30 Intersect the North line of
 the Reservation $N89^{\circ}10'W$
 10.40 chains from the Closing
 Cor. bet. Secs. 7.^{and} 12. as
 hereinbefore described.
 Thence I run.
 $S1^{\circ}49'W$ on a true line
 bet. Secs. 7.^{and} 12.
 Va. $13^{\circ}42'E$
- 4.80 high bank. descend.
- 6.30 Set a limestone $20 \times 10 \times 4$ ins.
 15. ins. in the ground. for
 Cor to Secs. 7, 12, 13 + 18

Verde Military Reservation

marked with 4 notches on
the S. and 2 notches on N.
edges. dug pits 18 x 18 x 12 ins.
in each. Sec. 5 1/2 ft. dist.
and raised a mound of
earth 2 1/2 ft. high. 4 ft.
base. alongside.

Land rough.

Soil stony. 4th rate

No timber

Thence I run

S 1° 49' W on a true line
bet. Secs. 13 + 18.

Va. 13° 42' E

- 2.10 Wash. 50 lbs wide flows Westward
10.50 edge of mesa. ls. NE + S.W.
15.80 Cañon 60 lbs wide flows S.W. ^{and}
30.00 edge of mesa ls. S.W. + NE ^{down}

Township Exterior. Camp.

chains	
34.00	Cañon 40 lks wide flows. S.W.
40.00	Set a Malpais Stone 20x8x6 ins. 15 ins. in the ground for. $\frac{1}{4}$ Sec. Cor. marked $\frac{1}{4}$ on W face. dug pits. 18x18 x 12 ins. N. & S. of stone. 5' ft. dist. and raised a mound of earth $1\frac{1}{2}$ ft. high. $3\frac{1}{2}$ ft. base. along side
46.00	top of ridge to. E. & W.
50.40	Wash. 20 lks wide flows. Steep
80.00	Set a Malpais Stone 18x10x8 ins. 12 ins. in the ground for. Cor. to Secs. 13, 18, 19 & 24, marked with 3 matches on N. & S. edges. dug pits 18x18x12 ins. in each. Sec. 5' ft. dist. and raised a mound of earth 2 ft. high

Verde Military Reservation

chains $4\frac{1}{2}$ ft. base alongside.

Land Mountainous 50 chains.

Soil stoney 4 $\frac{1}{2}$ rate.

No. timber

Thence I run.

S $1^{\circ}49'$ W on a true line

bet. Secs. 19^{and} 24.

Va. $13^{\circ}42'$ East.

over gently rolling mesa.

40.00

Set a granite stone $24 \times 10 \times$
ins. 18 ins. in the ground

for $\frac{1}{4}$ Sec. Cor. marked

$\frac{1}{4}$ on W face. dug pits

$18 \times 18 \times 12$ ins. N & S of stone

$5\frac{1}{2}$ ft. dist. and raised

mound of earth $1\frac{1}{2}$ ft high.

$3\frac{1}{2}$ ft. base, alongside.

80.00

Set a Malpais stone

Township Exterior. Camp

16x10x5 ins. 11 ins. in the
 ground. for. Cor. to Secs.
 19, 24, 25 & 30. marked
 with 4 notches on N. and 2
 notches on S edges. dug pits
 18x18x12 ins. in each. Sec.
 5 1/2 ft. dist. and raised
 a mound of earth 2 ft. high
 4 1/2 ft. base, alongside
 Commanding Officers Hdqrs
 Old Camp Verde Ex. order
 March. 30. 1870. bears
 S 57° 12' E 26.80 chains.
 Land nearly level
 Soil sandy loam 1st rate
 No timber

Verde Military Reservation

Main Shenee I run

S 1° 49' W on a true line
bet. Secs. 25 and 30.

Va. 13° 42' E

over level land

11.00

Left Bank Verde River
Set a Malpais Stone 16x10x5
ins. 11 ins. in the ground
for Meander Cor. to fractional
Secs. 25 + 30. Marked M.C.
on S face. Dug a pit
3 ft. square 1 ft. deep. 8
links N. of Stone. and raised
a mound of earth 2 ft. high
4 1/2 ft base. Alongside

39.30

Set a ^{Right bank Verde River} Malpais Stone 16x11x6
ins. 11 ins. in the ground
for Meander Cor. to fractional
Secs. 25 + 30. Marked M.C.

Township Exteriors. Camp.

- chains on N face. dug a pit
3 ft. square 1 ft. deep. 8 lbs
S. of Stone. and raised a
mound of earth 2 ft. high
4 1/2 ft. base along side.
- 40.00 Set a Malpais Stone 20x8x7
ins. 15 ins. in the ground
for 1/4 Sec. Cor. marked 1/4
on W. face. dug pits 18x18
x12 ins N. + S. of Stone 5 1/2
ft. dist. and raised a mound
of earth 1 1/2 ft high 3 1/2 ft.
base. along side
- 61.50 Ditch 20 lbs wide flows Easting
- 69.20 Wagon Road to S.E. + N.W.
- 80.00 Set a Malpais Stone 20x12x5
ins. 15 ins. in the ground. for
Cor. to Secs. 25, 30, 31 + 36.
marked with 5 notches on N

Verde Military Reservation

chains and 1 notch on V edges
 dug pits 18x18x12 ins in
 each. Sec. 5 1/2 ft. dist. and
 raised a mound of earth
 2 ft. high 4 1/2 ft. bases
 alongside.

Land level

Soil Sandy loam, 1st rate
 No timber

Thence I run

S 1° 49' N on a true line
 bet. 31 and 36.

Va. 13° 42' E

24.00 Wood Road to E. + W.

39.00 point of hill to N.E. + S.W.

40.00 Set a Malpais Stone 20x10
 x 6 ins. 15 ins. in the ground

57

BOOK 2021

56

BOOK 2021

Extens. Sps. 14 N. R. 4 & 5. East

chains for 1/4 Sec. Cor. marked 1/4
on W face. dug pits 18x18
x 12 ins. N + S of Stone 5 1/2
ft. dist. and raised a mound
of earth and stone 2 ft.
high. 4 ft. base. alongside

80.00 The Cor. to Sps. 13 + 14 N. R. 4.
4. 5. E. hereinafter described
Land gently rolling
Soil Sandy loam + gravel 1/2 ft. ^{at 1} note
No. timber

Subdivisions Tps 14. N R. 5. E.

chain I now return to Cor. to
Secs. 4, 5, 32 and 33 Tps 13+14
N. R. 5. E., as hereinbefore
described.

Thence I run
East, on a true line
bet. Secs. 4 and 33.
Va. $13^{\circ}42'E$

24.02 Intersect E. boundary of the
Reservation.

Set a limestone $22 \times 16 \times 8$ ins
16 ins. in the ground. for C
Cor. to fractional Secs. 4 + 33
marked C. M. V. R. C. C. ^{on W face} dug
pits N. W. S. E. and W of Stone
 $18 \times 18 \times 12$ ins. $5 \frac{1}{2}$ ft. dist.
and raised a mound of
earth 2 ft. high. 4 ft. base,
along side

Subdivisions T. 14 N. R. 5. E. Camp

Chains	Land nearly level Soil gravelly 2 ^d rate No timber
--------	---

I now return to the Cor.
of Secs. 32 & 33. on S. boundary
of T. 14 N. R. 5. E.
Thence I run
N 0° 2' W on a true line
bet. Secs. 32 & 33.
Va. 13° 42' E

9.50	Top ridge to E & W descend,
15.00	Wash 25 lks wide flows Westly
27.20	Cattle trail to E & W.
40.00	Set a malpais stone 16x10x5 ins. 11 ins. in the ground. for 1/4 Sec. Cor. marked 1/4 on W. face. and dug pits

Verde Military Reservation

- chain 18X18X12 ins. N. & S. of Stone
 5 1/2 ft. dist. and raised a
 mound of earth 1 1/2 ft. high
 3 1/2 ft. base alongside. ^{descend}
- 48.00 Gulch 40 lks wide flows mostly
 53.00 ridge bs. E. & W. descend
- 55.80 Cañon 100 lks wide flows mostly
- 69.72 Intersect E. boundary of Resin
 Set a Malpais Stone, 20X11
 X 5 ins. 15 ins. in the ground
 for Closing Cor. to fractional
 Secs. 32 & 33. marked C.C.
 C.V.M.R. on S. face.
 dug pits N.E. S.W. & W of
 Stone. 5 1/2 ft. dist. 18X18X
 12 ins. and raised a mound
 of earth 2 ft. high 4 ft. base
 alongside.
 Land broken
 Soil gravelly 2^d rate. No timber

Subdivisions T. 14, N. R. 5, E., Camp

chain I now return to the Cor.
to Secs. 5, 6, 31 + 32, on the
S. boundary of the Township
as recently ^{re} established by me
thence I run
N 0° 3' W on a true line
bet. Secs. 31rd & 32.
Va. 13° 42' E

- 1.90 old ditch 30 lks wide to N.E.S.W.
11.30 Ditch 20 lks wide flows Westly
40.00 Set. a Malpais Stone 24x10
x4 ins. 18 ins. in the ground
for 1/4 Sec. Cor. marked
1/4 on W. face. dug pits
18x18x12 ins. N.E.S. of Stone
5 1/2 ft. dist. and raised a
mound of earth and Stone
2 ft. high. 4 ft. base alongside
Flugstaff near the center of

Verde Military Reservation

chain	the Parade ground bears N 24° 40' E. 16.70 chains N.W. Cor. of William S Heald Store bears S 36° 41' E. 7.60 chs.
43.30	Wagon-Road bears N.W. + S.E.
51.70	" " " " N.W. + S.E.
57.07	S.W. Cor. Arsenal
58.50	S. line of Commissary Building
60.66	S " " Quartermaster "
62.00	S " " Hospital
63.80	descend from mesa.
69.20	Ditch 20 lts wide flows Eastly
70.00	enter bottom
80.00	Set a granite stone, 36x16x 10 ins, 27 ins in the ground for Cor. to Secs. 29, 30, 31 + 32 marked with 5 notches on E, and 1 notch on S edges, dug up to 18x18x12 ins. in each

Subdivisions T. 14. N. R. 5. E. Camp

chains Sec. 5 $\frac{1}{2}$ ft. dist. and
raised a mound of earth
2 ft high. 4 $\frac{1}{2}$ ft. base,
alongside.

Land calling mesa ^{2^d 1/2}
Soil gravelly & sandy loam 1st
No. timber.

Dec. 29. 1892

Thence I run
West. on a random line
bet. Secs. 30 & 31.
Va. 13° 42' E

40.00 Set. temporary $\frac{1}{4}$ Sec. Cor.
76.70 Intersect W boundary of Tp.
at Cor. to Secs. 25, 30, 31. & 36.
as. recently established by me
Thence I run
East. on a true line

Verde Military Reservation

chain bet. Secs. 30 & 31.

Ya. $13^{\circ}42'E$

over level bottom land

12.80 Wash 40 lbs wide flows N.E.

23.70 Wagon road cross N.W. & S.E.

34.60 Ditch 20 lbs. flows. southerly

36.70 Set a limestone $18 \times 14 \times 10$ ins.

12 ins. in the ground. for

 $\frac{1}{4}$ sec. Cor. Marked $\frac{1}{4}$ on N.face. dug pits $18 \times 18 \times 12$ insE. & W. of Stone. $5\frac{1}{2}$ ft. dist.

and raised a mound of

earth. $1\frac{1}{2}$ ft. high. $3\frac{1}{2}$ ft.

base alongside

76.70 The cor. 5 Secs. 29, 30, 31 & 32

Land level

Soil. Sandy loam 1st rate

No. timber.

Subdivisions T. 14 N R. 5. E Camp

- chain Hence I run
 East on a true line
 bet. Secs. 29 & 32.
 Va $13^{\circ}42' E$
- 27.60 Right Bank Verde River
 Set a granite Stone 20x10
 x6 ins. 15 ins. in the ground
 for Meander Cor. to fract.
 Secs. 29 & 32. Marked M.C.
 on E. face. dug a pit. 3 ft.
 square. 1 ft. deep. 8 links W
 of Stone, and raised a
 mound of earth. 2 ft. high
 4 1/2 ft. base. alongside
- 40.00 Bed of Verde River
- 45.70 Left Bank of Verde River
 Set a Volcanic Stone 18x10
 x6 ins. 12 ins. in the ground
 for Meander Cor. to fract.

Verde Military Reservation

- chain Secs. 29 + 32, also Witness to
 1/4 Sec. Cor. Marked M.C.
 on W. and 1/4 W.C. on N. face
 dug a pit, 2 ft. square, 1 ft.
 deep, 8 links E of Stone.
 and raised a mound of
 earth, 2 ft. high 4 1/2 ft.
 base, alongside.
- 51.00 base of high bank to N. + S.
- 55.50 top " " " to N. + S.
- 72.40 Intersect E. boundary of the
 Reservation, where I mark
 a Malpais rock in place
 3 ft. square + 3 ft. high, for
 Colony Cor. to fractional
 Secs. 29 + 32, ^{marked} C.C. C.V.M.R.
 on W. face, and raise a
 mound of Stone 3 ft. high
 5 ft. base, alongside

Subdivisions T. 14. N. R. 5. E. Camp

chains Pits impracticable
 Land Nearly level
 Soil Sandy loam 1st rate
 Timber Mesquite.

I now return to the
 Cor. of Secs. 29, 30, 31 & 32
 I run. $N 0^{\circ} 3' W.$ on true line
 bet. Secs. 29 & 30.
 $Va. 13^{\circ} 42' E$

over level bottom land,
 19.50 Right Bank of Verde River
 Set a limestone $18 \times 12 \times 10$
 ins. 12 ins. in the ground
 for meander Cor. to fract.
 Secs. 29 & 30. Marked m.c.
 on N face. dug a pit
 $3 \text{ ft square. } 1 \text{ ft deep. } 8$
 links S of Stone. and

Verde Military Reservation

- chain raised a mound of earth.
2 ft. high, $4\frac{1}{2}$ ft. base.
alongside.
- 40.00 Left Bank of Verde River
Set a limestone $20 \times 14 \times 7$ ins.
15 ins. in the ground, for
Meander Cor. to fractional
Secs. 29 & 30. also witness $\frac{1}{4}$
Sec. Cor. marked M.C. on
S. - and $\frac{1}{4}$ out W. face. dug
a pit, 3 ft. square 1 ft. deep
8 links N. of stone, and
raised a mound of earth
2 ft. high, $4\frac{1}{2}$ ft. base
alongside.
- 80.00 Set a granite stone 20×10
 $\times 6$ ins. 15 ins. in the ground
for Cor. to Secs. 19, 20, 29 & 30
marked with 5 notch on E.

Subdivisions T. 14. N. R. 5. E. Camp

Chains and 2 watches on S edges.
 Aug pits. 18x18x12 ins. in
 each sec. 5 1/2 ft. dist. and
 raised a mound of earth
 2 ft. high. 4 1/2 ft. base
 alongside.

Land level

Soil. Sandy loam 1st rate

Timber Mesquite

Thence I run

West on a random line
 bet. Secs. 19 & 30.

Pa. 13° 42' E

40.00 Set. Temporary 1/4 Sec. Cor.

74.10 Intersect the W. boundary of
 the Township at Cor. 15

Secs. 19, 24, 25th and 30.

Verde Military Reservation

chains as recently established by me
Thence I run

East. on a true line
bet. Secs. 19th and 30.

Pa. $13^{\circ}42'E$

ascend.

- 35.10 edge of high mesa. to N. + S.
34.10 Set a Malpais Stone 20x12
x6 ins. 15 ins. in the ground
for 1/4 sec. Cor. marked 1/4
on N face. dug pits 18x18
x12 ins. E. + W. of Stone
5 1/2 ft. dist. and raised a
mound of earth and Stone
2 ft. high. 4 ft. base.
alongside.
- 45.70 Edge of mesa. to N. + S. descend
1.80 Beaver Wagon Road. to N. + S.
74.10 The Cor. to Secs. 19, 20, 29 + 30

Subdivisions T. 14. N. R. 5. E. Camp

chains Land rolling.

Sail. loam + gravel 1st + 2^d 1/2 m.

No. timber.

Thence I run

East on a true line

bet. Secs. 20nd and 29.Va. $13^{\circ} 42' E$.

- 1.30 N. Bank of Beaver Creek flows S.
 3.90 E " " " " "
 30.50 leave bottom. and ascend
 35.00 edge of mesa. to N. + S.
 40.00 Set a limestone $20 \times 10 \times 7$
 ins. 15 ins. in the ground,
 for $\frac{1}{4}$ Sec. Cor. marked $\frac{1}{4}$
 on N. face. dug pits $18 \times$
 18×12 ins. E. & W. of Stone
 $5\frac{1}{2}$ ft. dist. and raised

Verde Military Reservation

chain a mound of earth $1\frac{1}{2}$ ft high
 $2\frac{1}{2}$ ft. base, alongside.

40.75 Intersect the E. boundary of
 the Reservation. Set a lime
 stone $22 \times 8 \times 6$ ins. $16 \times$ ins.
 in the ground, for Closing
 Cor. to fractional Secs. 20 & 29
 marked C.C. - C.V. M.R. on
 W face, dug pits on Resin
 line N.W. A.S.E. + W of Stone
 $18 \times 18 \times 12$ ins. $5\frac{1}{2}$ ft. dist.
 and raised a mound of
 earth 2 ft. high. $4\frac{1}{2}$ ft.
 base, alongside
 Land rolling.
 Soil loam + gravel 1st + 2^d nts
 No timber

Subdivisions T. 14. N. R. 5. E. Camp

chains. I now return to the Cor.
to Secs. 19, 20, 29 & 30.

Thence I run
N $0^{\circ} 3' W$ on a true line
bet. Secs. 19 & 20.

Pa. $13^{\circ} 42' E$

- 5.00 W. bank of Bearw Creek flows Sthly
6.00 Enter Bearw Creek Wash.
29.00 Leave " " " ascend
37.00 base of mesa.
39.00 top or edge of mesa to N.E. & S.W.
40.00 Set a Malpais Stone $24 \times 14 \times 8$
ins. 18 ins. in the ground. for
 $\frac{1}{4}$ Sec. Cor. marked $\frac{1}{4}$ on W
face. dug pits $18 \times 18 \times 12$
ins. N. & S. of Stone. $5\frac{1}{2}$ ft
dist. and raised a mound
of earth $1\frac{1}{2}$ ft. high. $3\frac{1}{2}$ ft.
base. alongside.

Verde Military Reservation

chains

- 76.70 edge of mesa. descend
- 78.00 Rocky Gulch 15 lks wide flows. E. tly. ^{down}
- 80.00 Rocky point. 70 ft. high. Set
a Malpais Stone 10 ins. in
the ground. (rock preventing
setting any deeper) for. Cor. to
secs. 17, 18, 19 & 20. Marked
with 5 notches on E. and
3 notches on S. edges. and
raised a mound of Stone
2 ft. high. 3 ft. base alongside
Pits impracticable
Land rolling & broken
Soil sandy & gravel. 3^d rate
No. timber. Except on Bear
Creek bottom. Willow

Subdivisions T. 14. N. R. 5. E. Camp

chains Thence I run

West. on a random line
bet. Secs. 18 & 19.

Va. $13^{\circ}42'E$

40.00 Set temporary $\frac{1}{4}$ Sec. Cor.

71.63 Intersect the N. boundary of
the Township at Cor. to Secs.
13, 18, 19, & 24. a

Thence I run

East on a true line

bet. Secs. 18th & 19.

Va. $13^{\circ}42'E$

2.00 Leave bottom & ascend

7.40 top ridge bet. S.W. & N.E., descend

11.60 Wash 10 lks wide flows S.W.

20.00 Wash. 5 " " " S.W. ^{around}

26.00 top or edge mesa bet. S.W. & N.E.

31.63 Set a Malpais Stone 18x10
x5 ins, 12 ins. in the ground.

Verde Military Reservation

chains for. $\frac{1}{4}$ Sec. Cor. marked $\frac{1}{4}$
 on N face. dug pits 18x18
 x 12 ins. E, S, W. of Stone,
 $5\frac{1}{2}$ ft. dist. and raised a
 mound of earth $1\frac{1}{2}$ ft high
 $3\frac{1}{2}$ ft. base, alongside.

42.20 edge of mesa to N. & S. descend

45.80 Wagon Road to N. & S.

61.00 Wash. 10 lks. wide flows. S. E.

71.63 The Cor. to Secs. 17, 18, 19 & 20.

Land ralling.

Soil. gravelly. 2^d rate

No. timber

Subdivisions T. 14, N. R. 5 E Camp

chains Thence I run

East on a true line

bet. Secs. 17 & 20.

Va. $13^{\circ}42' E$

descend

1.10 enter Beaver Creek bottom

9.05 Intersect E. boundary of

the Reservation. Set a

limestone $20 \times 14 \times 6$ ins.

15 ins. in the ground for

Closing Cor. to Sect. Secs.

17 & 20. marked C. C.

C. V. M. R. on W. face

and raised a mound of

stone $1\frac{1}{2}$ ft. high. 2 ft.

base ^{along grade} into impracticable

Land level 8. chains

Soil loam. + gravel. 2^d rate

No. timber.

Verde Military Reservation

- chains I now return to the Cor.
to Secs. 17, 18, 19^{and} 20.
Thence, I run
N $0^{\circ} 3' W$ on a true line
bet. Secs. 17^{and} 18.
Va. $13^{\circ} 42' E$
descend
- 2.00 enter Beaver Creek bottom
- 7.30 Right bank Beaver Creek flows, S.E.
- 12.20 Left. " " "
- 22.90 Intersect E. boundary of the
Reservation. Set a limestone
 $26 \times 12 \times 6$ ins. 20 ins. in the
ground for Closing Cor. to fract.
Secs. 17, & 18, marked, C.C.
E. V. M. R. on W. face, dug
pits $18 \times 18 \times 12$ ins. on Perm
line N.W. & S.E. & W of
stone $5\frac{1}{2}$ ft. dist. and raised

Subdivisions T. 14. N. R. 5. E. Camp

chains a mound of earth 2 ft.
high. $4\frac{1}{2}$ ft. base alongside
Land line. 21 chains.
Soil Sandy loam. 1st rate
No. timber, -

From the Cor. to Secs. 7, 12
13 & 18. S. run.

East on a true line
bet. Secs. 7 and 18
Va. $13^{\circ}42'E$

- 2.50 Wash 60 lbs wide flows Westaly
16.60 Wash 100 " " " S.W.
29.00 Set a limestone $18 \times 8 \times 7$ ins,
12 ins. in the ground. for
 $\frac{1}{4}$ sec. Cor. marked $\frac{1}{4}$ on
N face. dug pits. $18 \times 18 \times 12$
ins. E. & W. of Stone $5\frac{1}{2}$ ft.

Verde Military Reservation

chains dist. and raised a mound of earth. $1\frac{1}{2}$ ft. high. $3\frac{1}{2}$ ft. base. alongside.

46:63 Intersect E. boundary of the Reservation $S 21^{\circ} 37' E$ 6.16 chs. from the N.E. Cor.

Set a limestone $24 \times 14 \times 8$ ins. 18 ins. in the ground. for Closing Cor. to fractional Secs. 7th and 18. Marked. C.C.

C.V. M.R. on W face dug pits $18 \times 18 \times 12$ ins. N.W. S.E. on Resin line and W of Stone. $5\frac{1}{2}$ ft. dist. and raised a mound of earth and Stone. 2 ft. high $4\frac{1}{2}$ ft. base alongside

Land rolling.

Soil gravelly. 2^d rate

No. timber

Dec. 30. 1892

Subdivision S. 13, N. R. 4, E. Camp

chain I now return to the Cor.
to Secs. 1, 6, 7 & 12 Sp. 13, N.
R. 4, ^{2nd} & 5, E. as recently
established by me.

Thence I run

South, on a true line
bet. Secs. 7, ^{2nd} & 12.

Va. $13^{\circ}42'E$.

8.50 Wash 20 lks. wide follows E.

35.62 Intersect S. boundary of the
Reservation. $S 86^{\circ}30'E$. 30 links
from the S.W. Cor. thereof
Set a Malpais Stone 28×14
 $\times 8$ ins. 21 ins. in the ground
for Closing Cor. to fractional
Secs. 7, ^{2nd} & 12. Marked C.C.
C.V.M.R. on N. face, dug
pits $18 \times 18 \times 12$ ins. E. & W.
on Resin line, and N. of Stone

Verde Military Reservation

chains 5 1/2 ft. dist. and raised
 a mound of earth, 2 ft.
 high, 4 1/2 ft. base, alongside

40.00 Set a limestone 30x14x7
 ins. 22 ins. in the ground
 for 1/4 sec. Cor. marked 1/4
 on W face, dug pit, 18
 x 18 x 12 ins. N. & S. of Stone
 5 1/2 ft. dist. and raised
 a mound of earth, 1 1/2 ft.
 high, 3 1/2 ft. base, alongside
 Land level

Sail gravelly 2^d rate
 No. timber

Subdivisions J. 13. N. R 4 E. C. V. M. R.

chain From the Cor. to Secs. 1 & 6

7th and 12th aforesaid. I run

West on a true line

bet. Secs. 1st and 12th.

Pa. $13^{\circ}42'E$

6.80 Ditch 20 lks. wide flows South

15.56 Intersect W. boundary of the

Reservation. Set a Malpais

stone $16 \times 12 \times 6$ ins. 11 ins. in

the ground. for Closing Cor.

to fractional Secs. 7th and 12th

marked C.C. - C.V.M.R.

on E. face. dug pits $18 \times$

18×12 ins. N.W. & S.E. on R

line and E of stone $5\frac{1}{2}$

ft. dist. and raised a

mound of earth 2 ft

high. $4\frac{1}{2}$ ft. base.

alongside

Exterior but. Is. 13 + 14 N. R. 4 E. C. T. M. R.

Chains Land Nearly level
Soil gravelly 2^d rate
No. Timber.

From the Cor. to Sp. 13^{4d}
14 N. R. 4 + 5 E. Run
West. on a true line
but. Secs. 1^{4d} & 36.
Va. $13^{\circ}42' E$

- 8.50 edge of moun. bs. S.W. + N.E. descend
12.00 Enter bottom
17.70 Wagon Road bs. S.W. + N.E.
38.50 base of Hill, bs. N. + S, ascend
40.00 Set a Malpais Stone 20 x
10 x 6 ins. 15 ins. in the
ground for. $\frac{1}{4}$ Sec. Cor.
Marked $\frac{1}{4}$ on N. face. and
raised a mound of Stone

Exterior bet. Ts 13+14 N R. 4 E. C. V. M. R.

chains	1 1/2 ft. high. 2 ft. base alongside. Pits impracticable
50.00	Intersect W. boundary of the Reservation. Set a Malpais Stone 20x14x7 ins. 15 ins. in the ground for Closing Cor. to fract. Secs. 1 and 36. Marked C.C. C. V. M. R. on E face, and raised a mound of Stone 2 ft. high 3 1/2 ft. base alongside. Pits impracticable Land calling Soil Gravelly 2 ^d rate No timber

Subdivisions T. 14. N. R. 4. E. G. T. M. A.

chains From the Cor. 15 Secs. 25,
30, 31 and 36, Tps 14 N. R. 4. & 5, E.
I run West on a true line
bet. Secs. 25 and 36.

7a. $13^{\circ}42'E$

over level land

- 12.40 Wash 20 lks. wide flows. N.E.
37.50 base of ridge bs. N. & S. ascend
40.00 Set a malpais Stone 20 x
14 x 5 ins. 15 ins in the ground
for $\frac{1}{4}$ Sec. Cor. Marked $\frac{1}{4}$
on N face, dug pits 18 x
18 x 12 ins. E. & W. of Stone
5 $\frac{1}{2}$ ft. dist. and raised
a mound of earth 1 $\frac{1}{2}$ ft.
high 3 $\frac{1}{2}$ ft. base alongside
42.30 Top of ridge bs. N.E. & S.W. descend
47.70 Wash. 10 lks wide flows. N.E. ^{mark}
52.00 Top ridge bs. N.E. & S.W. descend

Subdivisions T. 14, N. R. 4, E. Camp

chains	
64.15	Cattle trail bs. N.E. & S.W. ascend
72.85	lap ridge bs. N.E. & SW descend
77.80	Wash 10 lks wide flows N.E.
80.00	Set a malpais stone 20x8 x 6 ins. 15 ins. in the ground for Cor. to Secs. 25, 26, 35 & 36 marked with 1 notch on S and E. edges. dug pits 18x 18x12 ins. in each sec. 5 1/2 ft. dist. and raised a mound of earth 2 ft. high 4 1/2 ft. base. alongside Land ralling Sail gravelly 2 ^d rate No. timber

Verde Military Reservation.

chains Thence I run
 West. on a true line
 bet. Secs. 26. & 35
 Va. $13^{\circ}42' E$

1.20 leave bottom & ascend
 6.90 Intersect W. boundary of
 the Reservation Set a
 limestone $18 \times 12 \times 6$ ins.
 12 ins. in the ground.
 for Closing Cor. to fractional
 Secs. 26. & 35. marked C.C.
 C.T. M.R. on E face.
 dug pits $18 \times 18 \times 12$ ins. NW
 & NE. on Res'n line. and E of
 Stone. $5\frac{1}{2}$ ft. dist. and raised
 a mound of earth 2 ft. high. and
 $4\frac{1}{2}$ ft. base. alongside
 Land railing
 Soil gravelly 2.^d rate
 No. timber

Subdivisions T. 14. N. R. 4. E. Camp

Chains From the Cor to Secs. 25, 26, 35

+ 36. I run $S 1^{\circ} 49' W$ on a
true line parallel with the
E. boundary of the Township
bet. Secs. 35 + 36.

Va. $13^{\circ} 42' E$

2.90 Wash 10 lbs wide flows, N. ^{and} S.

10.80 top ridge to, S.E. + N.W. ^{lines}

14.00 Wash 5 lbs wide flows, S.E.

14.90 Intersect W boundary of
the Reservation. Set a lime
stone. $20 \times 12 \times 8$ ins. 15 ins in
the ground. for. Closing Cor.
to fractional Secs. 35 + 36.
marked C.C. = C.V.M.R.
on E. face. dug pits $18 \times 18 \times 12$
ins. N.W. + S.E. on Resin line
and E of Stone. $5\frac{1}{2}$ ft. dist.
and raised a mound of earth

Verde Military Reservation

chains 2 ft. high. $4\frac{1}{2}$ ft. face
alongside.

Land ralling
Soil Stony 3^d rate
No timber

From the Cor. to Secs. 25.
26. 35 + 36. I run $N14^{\circ}8'E$
parallel with the E. boundary
of the Township. bet. Secs. 25 + 26
Va. $13^{\circ}42'E$

- 2.20 leave bottom + ascend
4.10 top of ridge bet. N.E. + S.W. down
7.40 Wash. 10 lbs wide flow, N.E.
23.00 Wash 15 " " " N.E.
37.70 Wash. 100 " " " East,
39.15 leave bottom + ascend
40.00 Set. Malpais Stone 16 x 11 x 6

Subdivisions I, 14, N, R. 4, E. Camp

Chains ins. 11 ins. in the ground for
 $\frac{1}{4}$ Sec. Cor. marked $\frac{1}{4}$ on W
 face. and raised a mound
 of stone $1\frac{1}{2}$ ft. high, 2 ft.
 base, along side

Pits impracticable

58.50 top of ridge bet E. + W. descend

62.50 Cañon 20 lks wide flows N.E.

65.30 top ridge bet. N.E. + S.W. descend

80.00 Set. a malpais Stone. $18 \times 11 \times 6$
 ins. 12 ins. in the ground

for. Cor. to Secs. 23, 24, 25 + 26
 marked with 2 notches on S.
 and 1 notch on E edges.

and raised a mound of Stone
 $1\frac{1}{2}$ ft. high 2 ft. base along
 side. Pits impracticable

Land Mountainous, 40 chs.

Soil gravelly + stony, 2^d + 4th rates

No. timber

Verde Military Reservation.

chains	Thence I run
	West, on a true line
	bet. Secs. 23 & 26.
	Pa. $13^{\circ}42'E$
0.70	Gulch 10 lks wide flows N.E.
23.30	Wash 40 lks " " N.E.
34.00	Wood Road bs. N.E. & S.W.
40.00	Set. a malpais Stone $18 \times 8 \times 5$ ins.
	12 ins. in the ground for $\frac{1}{4}$
	Sec. Cor. marked $\frac{1}{4}$ on N face
	and raised a mound of Stone
	$1\frac{1}{2}$ ft. high, 2 ft base alongside
43.85	Intersect ^{fills in practicable} W boundary of
	the Reservation. Set. a malpais
	Stone $20 \times 12 \times 6$ ins, 15. ins in
	the ground for Closing Cor. to
	Tract, Secs. 23 + 26. Marked
	C.C. - C.V.M.R. on E face
	dug pits. $18 \times 18 \times 12$, on Reim

Subdivisions T. 14 N. R. 4 E. Camp

chain line N.W. & S.E. ^{4th} E of Stone
5 1/2 ft. dist. and raised a
mound of stone and earth
2 ft. high 4 1/2 ft. base
alongside.

Land Malling

Soil Gravelly. 3^d rate

No timber

Dec. 31. 1892

From the Cor. to Secs. 23, 24, 25 &
26. I run East on a
random line bet. Secs. 24 & 25
Va. $13^{\circ}42' E$

40.00 Set temporary 1/4 Sec Cor.

80.00 Intersect the E. boundary of
the township. at Cor. to Secs.
19, 24, 25, & 30.

Thence I run

Verde Military Reservation

chains West on a true line

bet. Secs. 24 & 25.

Pa. $13^{\circ} 42' E$.

5.20 old channel 40 lks wide br. SE & NW,

19.00 Left Bank of Verde River

Set a limestone $16 \times 12 \times 6$ ins.

11 ins. in the ground. for

meander Cor. to fractional

Secs. 24 & 25. Marked M.C.

on ~~W~~ face. dug a pit 3 ft

square. 1 ft. deep. 8 link. E of

stone. and raised a mound

of earth. 2 ft. high. $4\frac{1}{2}$ ft.

base. alongside

35.00 Right Bank Verde River

Set a limestone. $24 \times 14 \times 10$ ins

18 ins. in the ground. for

meander Cor. to fractional

Secs. 24 & 25. Marked M.C.

Subdivisions T. 14. N. R. 4 E Camp

- chains on E. face. dug a pit 2 ft. square. 1 ft. deep, 8 links W of stone, and raised a mound of earth, 2 ft. high $4\frac{1}{2}$ ft. base, alongside.
- 4.000 Set a limestone $18 \times 8 \times 6$ ins. 12 ins. in the ground, for $\frac{1}{4}$ sec. Cor. marked $\frac{1}{4}$ on N. face. dug pits. $18 \times 18 \times 12$ ins. E. & W. of stone, $5\frac{1}{2}$ ft. dist, and raised a mound of earth $1\frac{1}{2}$ ft. high. $3\frac{1}{2}$ ft. base, alongside
- 52.30 Ditch 20 lks wide flows, Southwesterly
- 52.70 Wagon Road to N. & S, ascend
- 60.40 top of ridge to N. & S, descend
- 80.00 The Cor. to Secs. 23, 24, 25 & 26.
Land level 60 chs, rolling 20 chs
Sail loam & gravel 1st & 2^d rate
No timber

Verde Military Reservation.

- chains Thence I run
 $N 1^{\circ} 48' E$ on a true
 line. parallel to the E
 boundary of the township,
 bet. Secs. 23 & 24;
 $Va. 13^{\circ} 42' E$
- 1.35 Gulch. 10 lks wide flows N.E.
 4.40 Wash 20 lks " " Easterly
 15.00 Wash. 50 " " " "
 15.20 Edge of mesa. descend
 20.27 Wood Road bears S.E. & N.W.
 28.70 Wash 15 lks wide flows S.E.
 37.20 Cherry Creek Wagon road to S.E.
 40.00 Det. a Malpais Stone $18 \times 10 \times$
 8 ins. 12 ins. in the ground
 for $\frac{1}{4}$ Sec. Cor. Marked $\frac{1}{4}$
 on N face. dug pits 18×18
 $\times 12$ ins N. & S. of Stone
 $5\frac{1}{2}$ ft. dist. and raised

Subdivisions, T. 14, N. R. 4, E. Camp

chain a mound of earth $1\frac{1}{2}$ ft.
 high, $3\frac{1}{2}$ ft. base, alongside
 80.00 Set a Malpais Stone
 $18 \times 10 \times 5$ ins, 12 ins, in
 the ground, for Cor. to Secs,
 13, 14, 23 & 24, marked
 with 3 notches on S. and 1
 notch on E. edges, dug
 pits $18 \times 18 \times 12$ ins, in
 each. sec. $5\frac{1}{2}$ ft. dirt,
 and raised a mound of
 earth 2 ft. high, $4\frac{1}{2}$ ft.
 base, alongside
 Land level & broken
 Soil Sandy loam & Stony $1\frac{3}{4}$ ft. rate
 No timber

Verde Military Reservation.

Chains Thence I run East
on a random line.
bet. Secs. 13 & 24.
Va $13^{\circ}42'E$

40.00 Set temporary $\frac{1}{4}$ Sec. Cor.

80.00 Intersect E. boundary of the
township at Cor. to Secs.
13, 18, 19 & 24.

Thence I run
West on a true line
bet. Secs. 13 & 24
Va. $13^{\circ}42'E$

Descend

22.30 edge of mesa. descend

23.00 enter bottom

36.40 Left Bank Verde River
Set a malpais Stone
18x10x4 ins, 12 ins. in
the ground. for Meander Cor.
to fract. Secs. 13rd & 24

Subdivisions J. 14. N. R. 4. E. Camp

Chains also Witness to $\frac{1}{4}$ Sec
 Cor. marked M.C. on
 W. and N.C. $\frac{1}{4}$ on N
 faces, dug a pit 3 ft.
 square. 1 ft. deep. 8 links
 E of Stone. and raised a
 mound of earth. 2 ft high
 $4\frac{1}{2}$ ft. base, alongside

55.10 Right Bank Verde Rivin
 Set. a malpais Stone
 $16 \times 10 \times 5$ ins. 11 ins. in the
 ground. for Meandu Cor.
^{to fractional Secs. 13 + 24}
 marked M.C. on E face
 dug a pit. 3 ft. square 1
 ft. deep. 8 links W. of Stone
 and raised a mound of
 earth 2 ft high. $4\frac{1}{2}$ ft.
 base alongside.

65.10 Ditch 20 lks wide flows S.W.

Verde Military Reservation.

chains
67.70
80.00

Wagon road trans. S.E. & N.W
The Cor. to Secs. 13, 14, 23 & 24
Land level (nearly)
Soil sandy loam 1st rate
No timber

Thence I run
West on a true line
bet. Secs. 14 and 23.

Va. $13^{\circ}42'E$

38.10 Cherry Creek Wagon road, N.W. & S.E.
39.00 down bottom and ascend
40.00 Set a malpais Stone 18x16x
5 ins. 12 ins. in the ground
for $\frac{1}{4}$ Sec. Cor. marked $\frac{1}{4}$
on N face. and raised a
mound of Stone $1\frac{1}{2}$ ft. high
2 ft. base. alongside pits imperceptible

Subdivisions T. 14, N. R. 4, E. Camp

chains

80.00

Set a granite stone $26 \times 11 \times 6$ ins. 17 ins. in the ground for Cor. to Secs. 14, 15, 22 & 23. Marked with 3 notches on S. and 2 notches on E. edges dug pits $18 \times 18 \times 12$ ins. in each. Sec. $5\frac{1}{2}$ ft. dist. and raised a mound of earth 2 ft. high. $4\frac{1}{2}$ ft. base, along side.

Land level 39 chs. railing 41 chs

Soil loam & gravelly 1^{st} & 2^{nd} ^{1/2} mi

No timber.

Thence I run

West on a true line

bet. Secs. 15 and 22.

Pa. $13^{\circ} 42' E$

Verde Military Reservation.

chains
0.42

Intersect. W. boundary of
the Reservation. Set a
granite stone $20 \times 15 \times 8$ ins.
15. ins. in the ground. for
Closing Cor. to fractional
Secs. 15. + 22. marked C.C.
C.V.M.R. on East. face.
dug pits $18 \times 15 \times 12$ ins.
on Resin line N.W. + O.E.
and E. of Stone. $5\frac{1}{2}$ ft. dist
and raised a mound of
earth and Stone 2 ft. high
 $4\frac{1}{2}$ ft. base alongside.

Land level

Soil gravelly. 2^d rate

No timber

Subdivisions T. 14. N. R. 4. E. Camp

chains From the Cor. to Secs. 14, 15
22 & 23. I run $S 1^{\circ} 48' W$
on a true line bet. Secs. 22 & 23
Va. $13^{\circ} 42' E$

0.95 Intersect W boundary of
the Reservation. Set a
limestone $18 \times 15 \times 8$ ins. 12
ins. in the ground. for
Closing Cor. to fractional
Secs. 22 & 23, marked C.C.
C. V. M. R. on E. face.
dug pits $18 \times 18 \times 12$ ins.
on Resin line N.W. & S.E.
and E of Stone. $5\frac{1}{2}$ ft.
dist. and raised a mound
of earth and stone 2 ft.
high. $4\frac{1}{2}$ ft. base alongside
Land level
Soil gravelly 2^d rate
No. timber

Verde Military Reservation

chains

From the Cor. to Secs. 13, 14,
23 & 24. I run $N1^{\circ}48'E$
on a random line
bet. Secs. 13rd & 14.

Va. $13^{\circ}42'E$

40.00 Det. temporary $1/4$ Sec. Cor.
80.00 to a point where after
diligent search I fail
to find the Cor. to Secs.
11, 12, 13 & 14.

Thence I run

$S1^{\circ}48'W$ on a true line
parallel to the E. boundary
of the township bet. S. 13 & 14
Va. $13^{\circ}42'E$

18.55 Intersect N.W. boundary
of the Reservation in the
bed of the Verde River,
 $S62^{\circ}34'W$ 53.80 chs. from N.
Cor. No. 3 of Reservation

Subdivisions T. 14. N. R. 4. E. Camp

- chain
22.00 Right Bank of Verde River
Set a granite Stone $16 \times 10 \times 4$
ins. 11 ins. in the ground. for
meander Cr. to fractional Sec.
13 & 14. Marked M.C. on
N. face. dug a pit. 3 ft.
square. 1 ft. deep & links S
of Stone. and raised a
mound of earth and Stone
2 ft. high. $4\frac{1}{2}$ ft. base,
alongside. —
- 40.00 Set a granite Stone $20 \times 10 \times 8$
ins. 15 ins. in the ground. for
 $\frac{1}{4}$ Sec. Cor. marked $\frac{1}{4}$ on
N. face. dug pits $18 \times 18 \times 12$
ins. N. & S. of Stone. $5\frac{1}{2}$ ft.
dist. and raised a mound
of earth $1\frac{1}{2}$ ft. high. $3\frac{1}{2}$ ft.
base. alongside

Verde Military Reservation.

chains	
53.80	Stony edge of mesa. $N6^{\circ}E. + 56^{\circ}W$
09.20	Wagon road across S.E. & N.W.
80.00	The Cor. to Secs. 13, 14, 23 & 24
	Land nearly level
	Soil mostly sandy loam. 1 st rate
	No. timber.

From the established Cor.
to Secs. 7, 12, 13 & 18. on
the E boundary of the Sp.
I run West. on a true
line. bet. Secs. 12 & 13.

wa. $13^{\circ}42'E$

40.00 along the N. Slope of Wash
Set a lime stone $30 \times 18 \times 5$
ins. 22 ins. in the ground
for. $1/4$ Sec. Cor. (this point
is also on the Left. Bank)

Subdivisions Camp Verde Mil.

chains of the Verde River.)
 Marked $\frac{1}{4}$ on N face. also
 M.C. on W. face. dug
 pits $18 \times 18 \times 12$ ins. E. & W.
 of Stone. $5 \frac{1}{2}$ ft. dist. and
 raised a mound of earth
 2 ft. high. $4 \frac{1}{2}$ ft. base,
 alongside. -

46.00 Intersect N.W. boundary of
 the Reservation, in bed of
 Verde River Wash. $S 62^{\circ} 34'$
 W 14.65 chains from N.
 Cor. No. 3 of the Reservation
 Land broken
 Soil loam. & stony 1^{st} & 4^{th} ^{rate}
 No. timber

I now return to the Cor.
 to Secs. 14, 15, 22 & 23.

Reservation J 14. N. Q. 4. E.

Thence I run.

N¹°48'E on a random
line bet. Secs. 14 & 15.

Va. 13°42'E

40.00 Set temporary 1/4 sec Cor.
89.14 to a point, whence the Cor. to
Secs. 10, 11, 14 & 15. bears East.
155. links dist. which is a
stone firmly set and
properly marked as described
in the field notes furnished
by the Surveyor General

Thence I run. S 2°48'W
on a true line bet. Secs. 14 & 15.

Va. 13°42'E

6.80 Gulch 50 lks wide flows E.

20.70 Gulch 40 " " " E

44.57 Set a granite stone 16x11x6
ins. 11 ins. in the ground for
1/4 Sec. Cor. marked 1/4 on N.

Subdivisions T. 14, N. R. 4, E.

chain face. dug pits $18 \times 18 \times 12$ ins.
N. + S. of Stone $5\frac{1}{2}$ ft. dist. and
raised a mound of earth $1\frac{1}{2}$ ft.
high. $3\frac{1}{2}$ ft. base. alongside.

69.90 Intersect. N.W. boundary of the
Reservation. Set a granite Stone
 $18 \times 12 \times 8$ ins., 12 ins. in the
ground. for Closing Cor. to fract.
Secs. 14 + 15. Marked C.C. - C7MR
on S face. dug pits $18 \times 18 \times 12$ ins.
on Resin line N.E. + S.W. + S of Stone
 $5\frac{1}{2}$ ft. dist. and raised a mound
of earth 2 ft. high. $4\frac{1}{2}$ ft. base alongside.
Old C.C. bears $N 62^{\circ} 34' E 1.19$ lks
which I destroy

73.70 Cherry Creek Wagon Road br. SE + NW

85.40 Wash 10 lks wide flows East.

89.14 The Cor. to Secs. 14, 15, 22 + 28

Land broken. Soil gravelly & has

No. timber. January 2, 1893.

BOOK #2021

U. S. Surveyor-General's Office,

TUCSON, A. T., *April 24* 1893

The foregoing Field Notes of the Surveys of
 Subdivision Lines of
 Camp Verde Military
 Reservation

of the Gila and Salt River Meridian
 in Territory of Ariz. executed by
 Samuel Drummond

U. S. Deputy Surveyor, under his contract dated
 Oct 31st 1892

having been critically examined, the necessary corrections and explanations made, the said Field Notes and the surveys they describe are hereby approved.

Raper & Johnson

U. S. Surveyor-General
 for the Territory of Arizona