

2033

BOOK 2033

# Field Notes

OF THE SURVEY OF

The Exterior Bounda-  
ries of the  
Pinal City Town Site

Pinal County 2033  
2033

Gila and Salt River Base and Meridian

ARIZONA.

By W. A. Merritt D. S.

Under contract dated Oct 13<sup>th</sup> 1880.

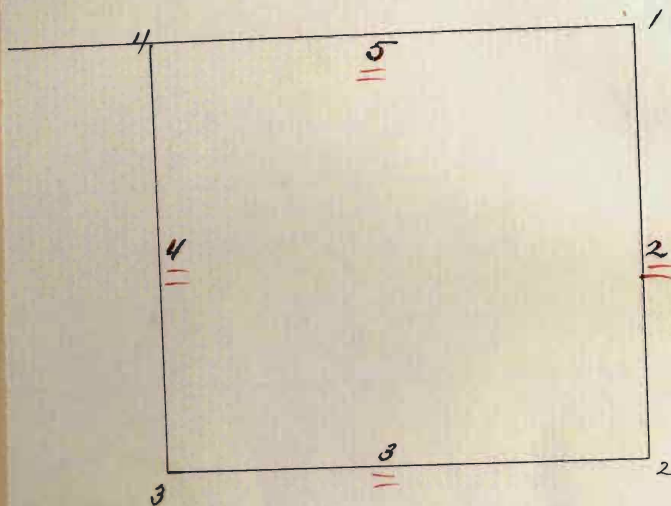
Survey commenced Nov. 13<sup>th</sup> 1880.

Survey completed Nov. 13<sup>th</sup> 1880.

2033

BOOK 2033

Index



Field Notes of the survey  
of the  
Pinal City Town Site  
as surveyed in accordance  
with contract from the  
U.S. Surveyor General  
dated 13<sup>th</sup> Oct. 1880, &  
surveyed Saturday November  
13<sup>th</sup> 1880 by.

W. H. Merritt,  
U. S. D. M. Sur.

1A

BOOK 2033

# Preliminary Oaths of Assistants.

We, James H. Rittenhouse  
and J. Carnody

do solemnly swear that we will faithfully execute the duties of Chain Carriers; that we will level the chain upon uneven ground, and plumb the tally pins, whether by sticking or dropping the same; that we will report the true distance to all notable objects, and the true length of all lines that we assist in measuring, to the best of our skill and ability.

J. H. Rittenhouse  
J. Carnody

Sworn to and subscribed before me, this 13<sup>th</sup>  
day of November, 1881

W. H. Benson  
J.P.

I, ~~He~~, James M. Clellan

do solemnly swear that ~~we~~<sup>9</sup> will well and truly perform the duties of ~~Flag Man~~

according to instructions given ~~us~~<sup>me</sup>, and to the best of ~~our~~<sup>my</sup> skill and ability.

J. M. Clellan

Sworn to and subscribed before me this 13<sup>th</sup> day of November A.D. 1880.

W. H. Benson.

J. W.



of the Survey  
Field Notes of Pinal City Town Site  
Pinal County, Arizona.

Established the N.E. corner  
of said Town Site by firmly  
planting a Pine Post  $6 \times 6 \frac{1}{2}$   
inches the post stands three  
(3) feet above the surface  
of the ground. This post  
is marked P. C. T. S. N. E. Cor.  
also connected with a rocky  
peak known as Browns Peak  
which is  $S 47^{\circ} 30' W$  52 chs and  
73 lks from this cor said peak  
is marked with a cross (+)  
on the highest point. Variation  
on above line  $12^{\circ} 50'$  East  
I obtained the variation  
by taking an observation on  
the Sun when he was on  
the meridian with a transit  
having Burts solar attachment  
attached to said transit which

according to the needle on  
said transit gave the variation  
to be  $12^{\circ}$  Degrees and  $50'$  mins East,  
From the N.E. Cor of P.C. I, S. run  
South South. variation  $12^{\circ} 50'$  East.

at 2.60 Chd Cross Road Running about  
N  $40^{\circ} 00'$  East


" 7.55 " Cross Road Direction about  
N  $30^{\circ}$  E

" 20.50 " Cross Arroya Direction  
about N  $15^{\circ}$  E

" 25.20 " " Arroya Direction  
about N  $50^{\circ}$  E

" 29.25 " Cross Road Running  
about S  $70^{\circ}$  E

" 30.90 " Cross Road Direction  
about East

34.55 "   
Queen Creek Direction  
 S  $70^{\circ}$  E.

at (36) Chs Established South East corner of Pinal City Townsite by firmly planting Pine Post 6x6 inches <sup>standings</sup> 3 feet above the ground marked P.C.T.S.S.E. Cor. From this corner ~~run~~ N 87° 55' East variation 12° 50' E 1.95 chs to Cottonwood tree 4 feet in diameter the North one of two trees which are 36 chs apart.

From this the S.E. Cor run West variation 12° 50' East

at 2.40 Chs Top bank of Queen Creek

" 23. " Cross arroya

Direction N 35° W

" 24.70 Feet of Cliff

Direction about North & South

" 29. " Top of Cliff

" (40) " Established the S.W. cor by firmly planting a Pine



Post 6x6 inches three (3) feet  
above the ground marked P.C.  
I.S. S.W. Cor. From this cor  
N 69° 45' E Variation 12° 50' East  
1.02 Chains to cross on the summit  
of Browns Peak.

From the S.W. cor run  
North variation 12° 50' E  
at 3.85 chs cross Road direction  
about East

" 5. ~~Bank of Creek~~  
Queen Creek Course <sup>Water runs</sup>  
about N 80° W <sup>Westward</sup>  
5.90 " ~~Bank~~  
" 6.40 " Cross Road direction  
" N 75° W.

7.75 " Cross arroya direction N 50° E

8.30 " Cross Chimney of Allen  
Whittow's House.

15.12 " Cross Road direction East.

18.23 " " Arroya " N 20° E

at 23.70 Chs Cross Road direction  $N 90^{\circ} E$

" (36) " Established N. W. of  
Pinal ~~Down~~ Site by firmly  
planting a Pine Post 4 1/2 inches  
and projects 3 feet above the  
ground marked P. C. T. S. N. W. Cor  
From this cor run

East Variation  $12^{\circ} 50' E$

at 4.45 Chs Cross Road direction  $N 90^{\circ} E$

" 7.30 " " Arroya direction  $N 30^{\circ} E$

" 18.20 " " Road "  $N 50^{\circ} E$

" 29.80 " " Arroya "  $N 25^{\circ} E$

" (40) " To the N. E corner of  
Pinal City Town Site the place  
of beginning

Pinal City Town Site contains  
One hundred and Forty Four  
(144). Acres. Said town site is  
situated North of the centre  
of Pinal County Territory of

Arizona, said town site is about twenty (20) miles North East from the town of Florence in the County of Pinal, and said town site is about four (4) miles South West from the Silver King Mine in the County and Territory aforesaid, said town site is situated north East <sup>and very close to</sup> of a large flat topped butte known as the Gordilla Butte.

The land is non-mineral, and the most of it mesa land although there is probably three acres in the bottom near the creek that is good land for cultivation and is under cultivation, Surveyed by ~~W. H. Merritt~~ W. S. Dep. Sur.  
Saturday November 13<sup>th</sup> 1880



## List of Names.

A List of the Names of Individuals employed  
to assist in running, measuring, or marking the  
lines and corners described in the foregoing Field  
Notes of the survey of *the exterior line*  
*of Pinal City town site*  
*Pinal County Arizona Terr.*

Showing the respective capacities in which they  
acted.

*Jas H. Pitterhouse* Chairman.

*J. Carmody*, Chairman,

Axeman.

*J. M. McEllan* Flagman.



8

10

tained in circular instructions from the U. S. Surveyor-General for Arizona, dated September 1, 1873, regarding the establishment of corner boundaries of public surveys, and that the foregoing are the true and original Field Notes of such surveys.

BOOK 2033

*W. H. Murritt*  
Deputy Surveyor.

Sworn to and subscribed before me, this 13  
day of November, 1881

*W. H. Benson*  
A.P.

U. S. Surveyor General's Office,  
Tucson, Arizona, December , 1880

The foregoing Field Notes of the survey of

Interior Boundaries of the  
Pinal City Townsite

Pinal County

of the Gila and Salt River Base and Meridian, Arizona,  
executed by W. H. Merritt,

D. S., under his contract of the 13<sup>th</sup> day of

October, 1880, having been critically ex-

amined and the necessary corrections and explanations  
made, the said Field Notes and the surveys they de-  
scribe, are hereby approved.

John Mason

Surveyor General.