

2035

BOOK 2035

Field Notes

OF THE SURVEY OF

Exterior lines of
"Dos Cabegas"
Town - Site.

2035

2035

Gila and Salt River Base and Meridian

ARIZONA.

By *Michael Kelleher* D. S.

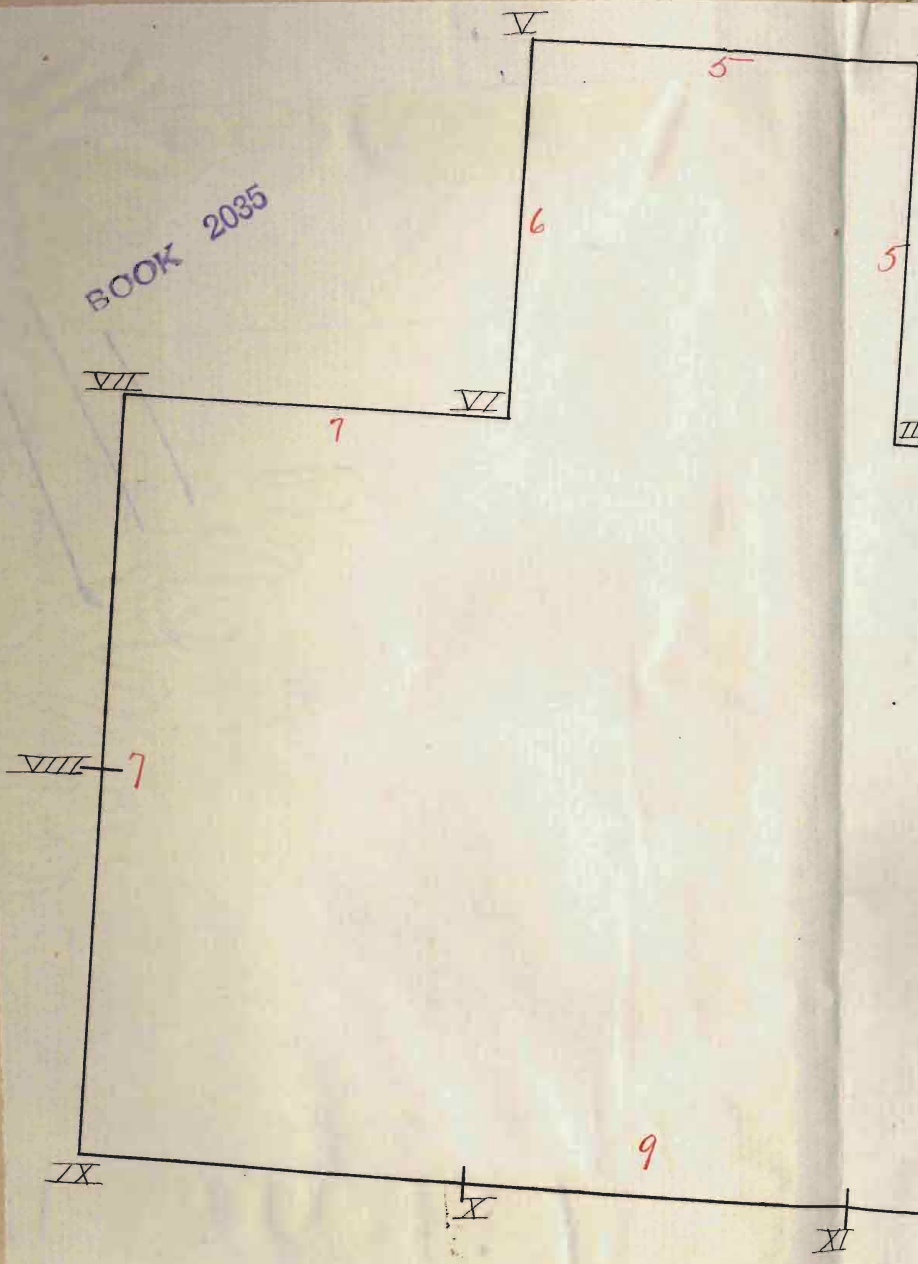
Under contract dated Aug 22 1881.

Survey commenced Oct 20 - 1881.

Survey completed Oct 22, 1881.

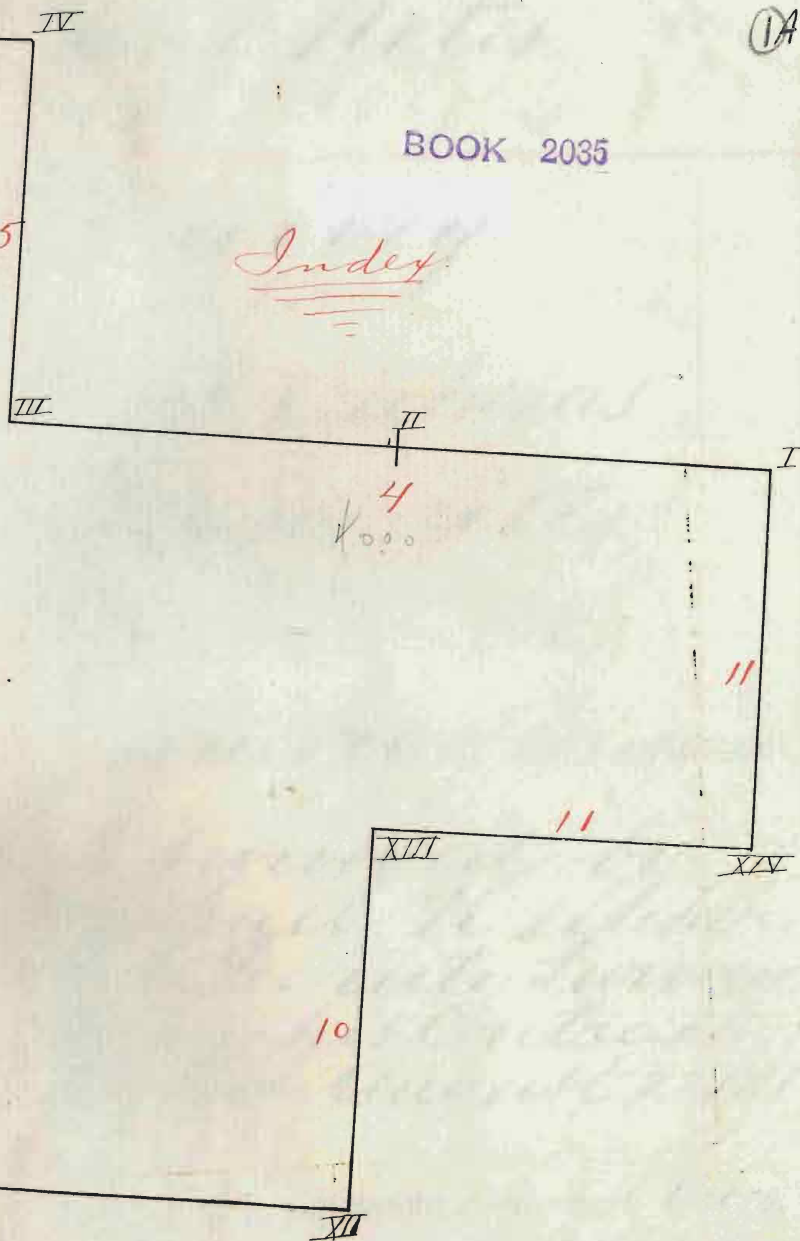
2035

BOOK 2035



BOOK 2035

Index



Field Notes
of the

14S/27E

Survey
of the

"Dos Cabezas"

Town-site,

in
Cochise Co.,

Territory of Arizona,

as surveyed by
Michael Kelleher,
U. S. Deputy Surveyor,
under his Contract,
dated August 22, 1881

Survey Commenced Oct. 20,
Survey Completed Oct. 22, 1881,

(10)

BOOK 2035

Names and duties
of assistants.

Sylvester Porter Chairman
Thomas C. Bain Chairman

Sylvester Porter, Moundville
-der.

Preliminary Oaths of Assistants.

We, *Sylvester Porter*
 and *Thomas C. Bain*
 do solemnly swear that we will faithfully execute
 the duties of Chain Carriers; that we will level the
 chain upon uneven ground, and plumb the tally
 pins, whether by sticking or dropping the same;
 that we will report the true distance to all notable
 objects, and the true length of all lines that we as-
 sist in measuring, to the best of our skill and
 ability. *in the Survey of the Dos
 Cabezas Town-site, U.S.*

Sylvester Porter
Thomas C. Bain

Sworn to and subscribed before me, this *19*
 day of *October*, 1881.

Charles Washeim
 Notary Public



We *Sylvester Porter*

do solemnly swear that ~~we~~ I will well and truly perform the duties of *erecting post and establishing corners and mounds* according to instructions given ~~me~~ and to the best of ~~my~~ skill and ability. in the survey of the *D's Cabezas Town Site, A.P.*

Sylvester Porter

Sworn to and subscribed before me this *19th*
day of *October* 188*7*.

Charles Washburn
Notary Public



ains

Preliminary to
Commencing this
Survey, on the 19th of
October, 1881 with a
Gurley Transit having
a solar attachment,
I took the latitude
from a position at
the North east corner
of the town-site and
found the variation
of the Needle to be
 $12\frac{1}{2}^{\circ}$ East.

On the night of the
same day (Oct. 19) I
took an observation
on the Star Polaris
and find the variation
of the Needle to be the
same as found with

Chains the Solar Transit,
 Survey Commenced
 October 20, 1881 with
 a Gurley Transit
 having a solar attach-
 ment

Van $12\frac{1}{2}^{\circ} E$,
 I begin at the N.E.
 Cor^r of the town-site
 at which point I
 set a post 4 feet long
 6 ins. square 12 ins.
 in the ground marked
 "N^o. I. D. C. T. S. - N.E. Cor^r."
 on S. face; dug pits
 $18 \times 18 \times 12$ ins. on each
 line N. and S. of post
 $5\frac{1}{2}$ ft. dist, and raised
 a mound of earth
 and stones $1\frac{1}{2}$ ft. high

Chains 3 ft. base around
post, from which
U. S. Mineral Mon-
ument N^o. 1 for the
Dos Cabezas Mining
District bears $N 74^{\circ} 55'$
E. 75.56 Chains, and
the summit or apex
of the most southerly
of the two heads or
peaks known as
the Dos Cabezas bears
 $N 8^{\circ} 45' W.$ 240.05 Chains.

(Note: The summit of
the Dos Cabezas being
inaccessable from
the South, the distance
thereto was Carefully
measured by triangula-
tion

- Chains Thence I run $N 83\frac{3}{4}^{\circ}$
W.
- 20.00 Set a post 4 ft. long 6
ins. square 12 ins. in
the ground. Marked
"N^o. II. D.C.T.S." on S.
face. dug pits $18 \times 18 \times$
 12 ins. on line W and
E. of post $5\frac{1}{2}$ ft. dist.
and raised a mound
of earth and stones
 $1\frac{1}{2}$ ft. high. 3 ft. base
around post.
- 40.00 Set a post 4 ft. long
6 ins. square 12 ins.
in the ground. Marked
"N^o. III D.C.T.S." on S. face
dug pits $18 \times 18 \times 12$ ins.
on each line E and N.
of post $5\frac{1}{2}$ ft. dist. and

Chains raised a mound of earth and stones $1\frac{1}{2}$ ft. high 3 ft. base around post,

20.00 Thence I run $N 6\frac{1}{4}^{\circ} E$.
 Set a post - 4 ft. long
 6 ins. square 12 ins. in
 the ground, marked
 "N^o IV D.C.T.S." on S. face,
 dug pits $18 \times 18 \times 12$ ins.
 on each line N. and
 S. of post - $5\frac{1}{2}$ ft. dist.
 and raised a mound
 of earth and stones
 $1\frac{1}{2}$ ft. high 3 ft. base
 around post.

20.00 Thence I run $N 83\frac{3}{4}^{\circ} W$
 Set a post - 4 ft. long

Chains 6 ins. square 12 ins. in the ground marked "N^o V D.C.T.S." on S. face dug pits 18x18x12 ins. on each line E and S. of post-5½ ft. dist. and raised a mound of earth and stones 1½ ft. high 3 ft. base around post.

20.00 Thrice I run S 6¼° W set a post-4 ft. long 6 ins. square 12 ins. in the ground marked "N^o VI D.C.T.S." on S. face, dug pits 18x18x12 ins. on each line N and W. of post-5½ ft. dist. and raised a mound of

Chains, earth and stones
 $1\frac{1}{2}$ ft. high 3 ft. base
 around post.

20,00 Thence I run $N 83\frac{3}{4}^{\circ} W$
 Set a post 4 ft. long
 6 ins. square 12 ins. in the
 ground marked
 "N^o. VII D.C.T.S. - N.W. Cor."
 on S. face dug pits $18 \times$
 18×12 ins. on each line
 E. and S. of post - $5\frac{1}{2}$ ft. dist.
 and raised a mound
 of earth and stones
 $1\frac{1}{2}$ ft. high, 3 ft. base
 around post.

20,00 Thence I run $S 6\frac{1}{4}^{\circ} W$.
 Set a post 4 ft. long 6
 ins. square 12 ins. in the

Chains,

ground marked "N^o. VIII
D.C.T.S. on E. face. dug
pits 18x18x12 ins. on line
N. and S. of post 5½ ft. dist.
and raised a mound
of earth and stones 1½ ft.
high. 3 ft. base around
post.

27.91 Road from Dos Cabezas to
the town of Milco Course
N 83½° W.

40.00 Set a post 4 ft. long 6 ins.
square 12 ins. in the ground
marked "N^o. IX D.C.T.S. S.W.
Cor." on N. face. dug pits
18x18x12 ins. on each line
N. and E. of post 5½ ft. dist.
and raised a mound of
earth and stones 1½ ft. high
3 ft. base around post.

Chairs.

- 20.00 Thence I run S. $83\frac{3}{4}^{\circ}$ E
 Set a post-4 ft. long 6 ins. square, 12 ins. in the ground
 Marked "N^o. X. D.C.T.S." on N. face. dug pits 18x18x12 ins. on line E. and W. of post-5 $\frac{1}{2}$ ft. dist. and raised a mound of earth and stones 1 $\frac{1}{2}$ ft. high, 3 ft. base around post.
- 40.00 Set a post-4 ft. long 6 ins square 12 ins. in the ground
 Marked "N^o. XI. D.C.T.S." on N. face. dug pits 18x18x12 ins. on line E. and W. of post-5 $\frac{1}{2}$ ft. dist. and raised a mound of earth and stones 1 $\frac{1}{2}$ ft. high 3 ft. base around post.
- 60.00 Set a post-4 ft. long 6 ins.

Chains

square 12 ins. in the ground.
 Marked "N^o XII D.C.T.S.-S.E.
 Cor." on N. face, dug pits
 18x18x12 ins. on each line
 W. and N. of post 5½ ft. dist.
 and raised a mound of
 earth and stones 1½ ft.
 high 3 ft. base around
 post.

Thence I run N. 6¼° E.

12.18 Road from Dos Cabezas
 to Camp Bowie Course
 S. 86½° E.

20.00 Set a post 4 ft. long 6 ins.
 square 12 ins. in the ground.
 Marked "N^o XIII. D.C.T.S."
 on N. face, dug pits 18x18x12
 ins. on each line S. and
 E. of post 5½ ft. dist. and

Chains.

raised a mound of earth and stones $1\frac{1}{2}$ ft. high 3 ft. base around post.

Thence I run $S. 83\frac{3}{4}^{\circ} E$

20.00

Set a post 4 ft. long 6 ins. square 12 ins. in the ground marked "N^o. XIV. D.C.T.S." on N face, dug pits $18 \times 18 \times 12$ ins. on each line N and N. of post. $5\frac{1}{2}$ ft. dist. and raised a mound of earth and stones $1\frac{1}{2}$ ft. high 3 ft. base around post.

20.00

Thence I run $N. 6\frac{1}{2}^{\circ} E$. to the point of beginning.

Containing 320
acres of land.

General Description.
The town is situated
on the Easterly side of
the Sulphur Spring
vally about 3 Miles
South of the peaks
known as "Los Caberos".
The road from the
town of Milcox to
Camp Bowie passes
through the town.
Milcox being about
14 miles North Westerly
and Camp Bowie about
13 miles Easterly.
The land on which
the town is situated

has a gentle slope
to the south.

There is no timber
growing on the land.

Michael Kelleher,
U. S. Deputy Surveyor.

List of Names.

A List of the Names of Individuals employed to assist
 in running, measuring or marking the lines and corners
 described in the foregoing Field Notes of the survey of *The*
Dos Cabezas Town-site
in the Territory of
Arizona

Showing the respective capacities in which they acted.

Sylvester Porter Chainman.
Thomas C. Bain Chainman.
 Axeman.
Sylvester Porter Mound builder,
 Flagman.



Final Oath of Assistants.

We hereby certify that we assisted Michael Kelleher U. S. Deputy Surveyor, in surveying all those parts or portions of the "Dos Cabezas" Town-site in the Territory of Arizona, as are represented in the foregoing field notes as having been surveyed by him and under his direction, and that said Survey has been in all respects, to the best of our knowledge and belief, well and faithfully executed, and the boundary monuments planted according to the instructions furnished by the Surveyor-General. for Arizona

Sylvester Porter Chainman.
Michael Bain Chainman.

.....
Axeman.

.....
Flagman.

Sylvester Porter Mound Builder,

Sworn to and subscribed before me, this 25th

day of October 1881

Charles Washburn
 Notary Public



Final Oath of Deputy Surveyor.

I, Michael Kelliker

United States Deputy Surveyor, do solemnly swear that I have, in my own proper person and with the necessary assistants, well, truly and faithfully executed the survey of the "Dos Cabezas" Town-site in the Territory of Arizona as are represented in the foregoing field notes as having been surveyed by me.

under my contract with John Wasson, United States Surveyor General for Arizona, bearing date the twenty second day of August 1881; that in making the said Survey I have used only such instruments as were approved by the said Surveyor-General, exercising due care in the preservation of adjustments of the same; that in using the solar compass I have at no time projected established lines depending for alignment upon the magnetic needle; that I have in all respects complied with the laws of the United States governing public-land

surveys, the surveying manual, and such additional instructions as have been furnished me by and through the said Surveyor-General relating to the aforesaid Survey; that I have thoroughly acquainted my assistants in the field with the nature of their duties under the laws and instructions above mentioned; that to the best of my knowledge and belief all assistants so employed have likewise obeyed the aforesaid laws and instructions, and that the annexed field-notes are the original, true, and correct returns of the said Surveys.

Michael Kelleher

Subscribed and sworn to before me this 25th
day of October 1881

Chas Washeim
Notary Public



U. S. Surveyor General's Office,
Tucson, Arizona, Nov 21, 1881

The foregoing Field Notes of the survey of the
Exterior lines of "Das Cabezas"
Town site.

of the Gila and Salt River Base and Meridian, Arizona,
executed by Michael Kelleher,
D. S., under his contract of the 22nd day of
August, 1881, having been critically ex-
amined and the necessary corrections and explanations
made, the said Field Notes and the surveys they de-
scribe, are hereby approved.

John Messersmith

Surveyor General.