

136  
JUL 3-1907

Book "D."  
2056

BOOK 2056

# FIELD NOTES

OF THE SURVEY OF THE

Entries, filings and school sections of Tp. 1 N. Rg. 2 W. by Metes  
and Bounds.

2056

2056

2056

Of the Gila and Salt River Meridian,

Territory of Arizona

AS SURVEYED BY

John F. Hesse, United States Deputy Surveyor,

Under his Contract No. 142, dated November 10, 1906, 189

Survey commenced June 16, 1907, 189

Survey completed June 26, 1907, 189

2056

137 1A

BOOK 2056

NAMES AND DUTIES OF ASSISTANTS.

A. N. Oliver Chairman

H. S. Young Chairman

C. C. Collins Moundman

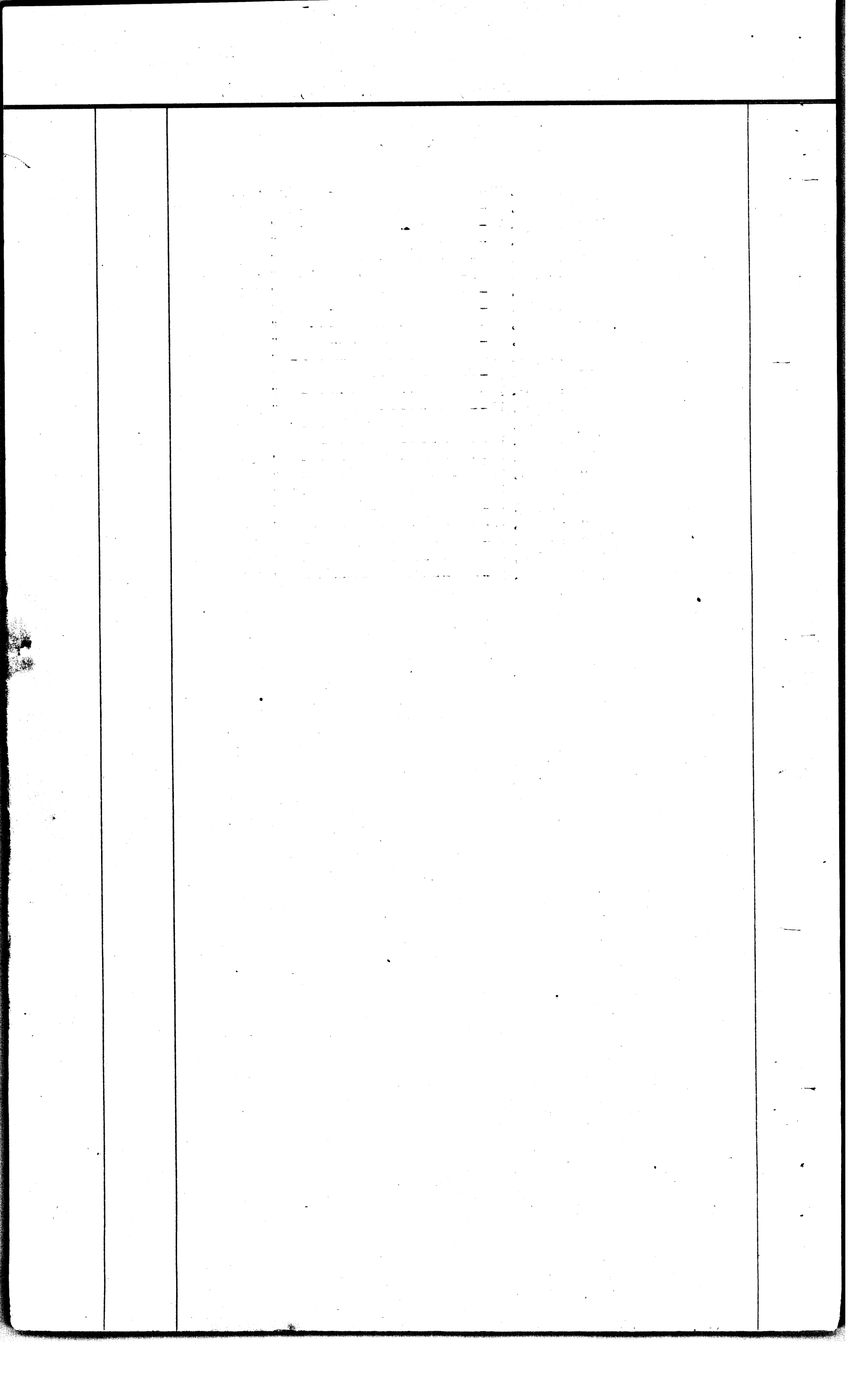
Ben Jones Axman

W. W. Shawk Flagman.

Metes and Bounds, Survey T. 1 N., Rg. 2 W.

INDEX.

Tract No. 37	-----	Page	1.
Tract No. 38	-----	"	2
Tract No. 39	-----	"	3
Tract No. 40	-----	"	3
Tract No. 41	-----	"	4
Tract No. 42	-----	"	4
Tract No. 43	-----	"	5
Tract No. 44	-----	"	5
Tract No. 45	-----	"	6
Tract No. 46	-----	"	7
Tract No. 47	-----	"	8
Tract No. 48	-----	"	8
Tract No. 49	-----	"	9
Tract No. 50	-----	"	9
Tract No. 51	-----	"	9
Tract No. 52	-----	"	10
Tract No. 53	-----	"	10
Tract No. 54	-----	"	11
Tract No. 55	-----	"	11
Tract No. 56	-----	"	11
Tract No. 57	-----	"	12
Tract No. 58	-----	"	12
Tract No. 59	-----	"	13
Tract No. 60	-----	"	13



# INDEX DIAGRAM.

*Township*....., *Range*.....

6	5	4	3	2	1
7	8	9	10	11	12
18	17	16	15	14	13
19	20	21	22	23	24
30	29	28	27	26	25
31	32	33	34	35	36

*Meanders Page*.....

PRELIMINARY OATHS OF ASSISTANTS.

WE, A. N. Oliver and H. S. Young  
do solemnly swear that we will well and faithfully execute the duties of chainmen; that we will level the chain over even and uneven ground, and plumb the tally pins, either by sticking or dropping the same; that we will report the true distances to all notable objects, and the true lengths of all lines that we assist in measuring, to the best of our skill and ability, and in accordance with instructions given us, in the survey of the entries, filings and school sections, by Metes and Bounds, of Tp. 1 N. Rg. 2 W.

A. N. Oliver, Chainman.  
H. S. Young, Chainman.

Subscribed and sworn to before me this 15<sup>th</sup>  
day of June 1907, 189



John P. Hesse  
U.S. Rep. Surveyor

WE, I. C. C. Collins and  
do solemnly swear that we will well and truly perform the duties of moundmen in the establishment of corners, according to the instructions given us, to the best of our skill and ability, in the survey of the entries, filings and school sections, by Metes and Bounds, of Tp. 1 N. Rg. 2 W.

I. C. C. Collins, Moundman.  
Moundman.

Subscribed and sworn to before me this 15<sup>th</sup>  
day of June 1907, 189



John P. Hesse  
U.S. Rep. Surveyor

WE, I. Ben Jones and  
do solemnly swear that we will well and truly perform the duties of axmen in the establishment of corners and other duties, according to instructions given us, to the best of our skill and ability, in the survey of the entries, filings and school sections, by Metes and Bounds, of Tp. 1 N. Rg. 2 W.

Ben Jones, Axman.  
Axman.

Subscribed and sworn to before me this 15<sup>th</sup>  
day of June 1907, 189



John P. Hesse  
U.S. Rep. Surveyor

I, W. W. Shawk, do solemnly swear that I will well and truly perform the duties of flagman according to instructions given me, to the best of my skill and ability, in the survey of the entries, filings and school sections, by Metes and Bounds, of Tp. 1 N. Rg. 2 W.

W. W. Shawk, Flagman.

Subscribed and sworn to before me this 15<sup>th</sup>  
day of June 1907, 189



John P. Hesse  
U.S. Rep. Surveyor

Metes and Bounds Survey, Tp.1 N. Rg. 2 W.

Chains.

Survey commenced June 16, 1907, and executed with a Young and sons light mountain transit No 7532, with solar attachment. The horizontal limb is provided with two double verniers placed opposite to each other, reading to single minutes of arc; which is also the least count of the verniers of the latitude and declination arcs.

The instrument was examined, tested on the true meridian at Phoenix, found correct, and was approved by the surveyor general for Arizona

I examine the adjustments of the transit and find them correct, then to test the solar apparatus, by comparing its indications, resulting from solar observations made during a.m., and p.m., hours, with a meridian determined by observations on Polaris, I proceed as follows.

At my camp which is situated 20.00 chains south of the cor. of secs. 27, 28, 33 and 34, Tp. 1 N. Rg. 2 W. latitude 33° 23' 19" N., longitude 112° 25' 42" W.; At 4h. 00m. p.m., l.m.t., I set off 33° 23 1/2' N. on the lat. arc; 23° 21' N. on the dec'l. arc; and determine with the solar a meridian and mark a point thereof, on an iron spike driven firmly in the ground, 5 chs. N. of my station.

I mark my station point by a cross on an iron spike driven firmly in the ground.

June 16, 1907

June 17: At 1h. 52m. a.m., by my watch, which has correct l.m.t., I observe Polaris at eastern elongation, in accordance with Manual of instructions, and mark a point in the line thus determined, on a peg driven in the ground, 5 chs. N. of my station.

At 6 a.m., l.m.t., I lay off the azimuth of Polaris, 1° 25' to the west, and mark the meridian thus determined by cutting a small groove in the spike set June 16, on which the meridian coincides with the merk determined by the solar.

At 6h. 05m. a.m., l.m.t. I set off 33° 23 1/2' N. on the lat. arc; 23° 24' N. on the dec'l. arc; and mark a point in the meridian determined by the solar, by a cross on the spiks already set 5 chs. N. of my station; this mark coincides with the meridian established by the Polaris observations.

The solar apparatus, by p.m. and a.m. observations defines positions for meridians which coincide with the meridian established by the Polaris observations; therefore I conclude that the adjustments of the instrument are satisfactory.

The magnetic bearing of the true meridian at 6h. 30m. a.m., is N. 14° 05' W.; the angle thus determined gives the mean mag. dec'l. 14° 05' E.

Tract 37.

At 8h. 00m. a. m., l.m.t., I set off 35° 25' N. on the lat. arc; 22° 22 1/2' N. on the dec'l. arc; and determine a meridian with the solar at the Cor. No.1 of tract 37, a granite stone 18 x 6 x 6 ins. set 12 ins. in the ground, marked 1-37 on N. W. face; from which the cor. of secs. 15, 16, 20 and 21 bears S. 76° 26' W. 288 lks. dist.

Thence I run N. 0° 04' W. 270 lks. dist. from the cor. of secs. 9, 10, 15 and 16

Set a granite stone 18 x 7 x 4 ins. 12 ins. in the ground for closing cor. of secs. 10 and 15, marked 20 on E. and 20 on W. sides; with 4 grooves on S. face; also set a granite stone 18 x 12 ins. crosswise on each line, N. and S. of stone, 7 ft. dist; and raise a mound

79.43

Metes and Bounds Survey, Tp. 1N. Rg. 2W.

chains.  
 79.88 of earth, 4 ft. base 2 ft. high E. of cor.  
 Set a granite stone 18 x 6 x 6 ins. 12 ins. in the ground  
 for N. E. cor. of school section, marked 2-37 on S. W.  
 face;  
 Thence I run  
 2.70 S. 89° 54' W.  
 2.70 Intersect line bet. secs. 9 and 10, N. 0° 02' W. 54  
 lks. dist., from the cor. of secs. 9, 10, 15 and 16,  
 Set a granite stone 18 x 7 x 4 ins. 12 ins. in the  
 ground for closing cor. of secs. 9 and 10, marked CC on  
 N., PC on S., with 3 grooves on E. faces; dig pits  
 24 x 18 x 12 ins. crosswise on each line, E. and W.  
 3 ft. and N. of stone 7 ft. dist.; and raise a mound  
 of earth 4 ft. base 2 ft. high, N. of cor.  
 79.94 Set a granite stone 18 x 6 x 5 ins. 12 ins. in the  
 ground for N. W. cor. of school section, marked 3-37  
 on S. E. face  
 Thence I run  
 0.41 South  
 0.41 Intersect line bet. secs. 9 and 16, 276 lks. S. 89° 59'  
 E. of the cor. of secs. 8, 9, 16 and 17, set a gran-  
 ite stone 18 x 6 x 5 ins. 12 ins. in the ground for  
 closing cor. of secs. 9 and 16, marked CC on W. PC on  
 E., with 4 grooves on S. faces; dig pits 24 x 18 x 12  
 ins., crosswise on each line, N. and S. 3 ft. and W.  
 of stone 7 ft. dist.; and raise a mound of earth 4 ft.  
 base, 2 ft. high W. of cor.  
 80.00 Set a granite stone 18 x 6 x 5 ins. 12 ins. in the  
 ground for S. W. cor. of school section, marked 4-37  
 on N. E. face;  
 Thence N. 89° 49' E.  
 77.24 Intersect line bet. secs. 15 and 16 67 lks. N. 0° 01'  
 W. of the cor. of secs. 15, 16, 21 and 22, set a  
 granite stone 20 x 6 x 6 ins. 15 ins. in the ground for  
 closing cor. of secs. 15 and 16, marked CC on S. PC on  
 N. and with 3 grooves on E. faces; dig pits 24 x 18 x 12  
 ins. crosswise on each line, E. and W. 3 ft. and S.  
 of stone 7 ft. dist.; and raise a mound of earth 4 ft.  
 base, 2 ft. high, S. of cor.  
 80.05 The cor. No. 1, place of beginning.

June 17, 1907

Tract No. 38.

June 18; At 7h. 00m. a.m., l.m.t. I set off 35° 23 1/2'  
 N. on the lat. arc; 23° 24 1/2' N. on the dec'l. arc;  
 and determine a meridian with the solar at cor. No. 1  
 of tract, a granite stone 18 x 6 x 5 ins. set 12 ins.  
 in the ground, marked 1-38 on N. W. and 2-39 on S. W.  
 faces, for cor. No. 1 tract 38 and cor. No. 2 tract 39.  
 from which the cor. of secs. 26, 27, 34 and 35 bears  
 S. 48° 25' W. 25. 91 chs. dist.  
 Thence I run  
 North  
 40.00 Set a granite stone 18 x 6 x 5 ins. 12 ins. in the  
 ground for cor. No. 2 of tract, marked 2-38 on S. W.  
 face  
 Thence  
 N. 89° 52' W.  
 21.84 Intersect line bet. secs. 26 and 27, 20.62 chs. S. 0°  
 01' E. of the cor. of secs. 22, 23, 26, and 27. Set  
 a granite stone 18 x 8 x 5 ins. 12 ins. in the ground  
 for closing cor. of secs. 26, and 27, marked CC on N.  
 PC on S., with 2 grooves on E. faces; from which  
 A mesquite 6 ins. diam., bears N. 61 1/2° E. 285  
 lks. dist., marked CC06T1NR2WS26BT.  
 A mesquite 4 ins. diam., bears N. 31° W. 298  
 lks. dist., marked CC06T1NR2WS27BT.  
 40.00 Set a granite stone 18 x 6 x 5 ins. 12 ins. in the ground  
 for cor. No. 3 of tract, marked 3-38 on S. E. face.  
 Thence



## Metes and Bounds Survey T. 1 N., R. 2 W.

3.

chains.

- South.  
40.00 Set a granite stone, 18 x 6 x 5 ins., 12 ins. in the ground, for cor. No. 4 of tract, also cor. No. 3 of tract No. 39, marked 4-38 on NE. face, and 3-39 on SE. face.  
Thence S. 89° 52' E.  
40.00 To cor. No. 1.
- Tract No. 39.
- I commence at cor. No. 1 of tract, the SE. cor., a granite stone 18 x 6 x 5 ins., set 12 ins. in the ground, and marked 1-39 on NW. face.  
Thence I run,  
North.  
0.62 Intersect line bet. secs. 26 and 35, 21.84 chs. E. of the cor. of secs. 26, 27, 34 and 35, and set a granite stone 20 x 6 x 5 ins., 15 ins. in the ground for closing cor. of secs. 26 and 35, marked CC 06 on E., P C on W., with 1 groove on S. faces; dig pits 24 x 18 x 12 ins., crosswise on each line N. and S., 3 ft. and E. of stone 7 ft. dist., and raise a mound of earth 4 ft. base, 2 ft. high, E. of cor.  
20.00 Cor. No. 2 of tract, also cor. No. 1 of tract No. 38, previously described; from this cor. the cor. of secs. 26, 27, 34 and 35 bears S. 48° 25' W., 25.91 chs. dist.  
Thence,  
N 89° 52' W.  
40.00 Cor. No. 3, also cor. No. 4 of tract 38, previously described.  
Thence,  
North.  
20.00 Set a granite stone, 18 x 6 x 5 ins., 12 ins. in the ground for cor. No. 4 of tract, marked 4-39 on SW. face.  
Thence,  
N. 89° 44' W.  
20.05 Set a granite stone, 18 x 6 x 5 ins., 12 ins. in the ground for cor. No. 5 of tract, also cor. No. 2 of tract 40, marked 5-39 on SE. and 2-40 on SW. faces;  
Thence,  
S. 0° 02' W.  
39.53 Intersect line bet. secs. 27 and 34, 200 lks. E. of the 1/4 sec. cor., bet. secs. 27 and 34, and set a granite stone 18 x 6 x 5 ins., 12 ins. in the ground for closing cor. of secs. 27 and 34, marked C C 06 on W., P C on E., with 1 groove on S. faces; dig pits 24 x 18 x 12 ins. crosswise on each line N. and S. 3 ft., and W. of stone 7 ft. dist., and raise a mound of earth 4 ft. base, 2 ft. high, W. of cor.  
40.32 Set a granite stone, 18 x 6 x 5 ins., 12 ins. in the ground for cor. No. 6 of tract, marked 6-39 on NE. face.  
Thence  
East.  
38.24 Intersect line bet. secs. 34 and 35, 62 lks. South of the cor. of secs. 26, 27, 34 and 35, and set a granite stone, 18 x 8 x 6 ins., 12 ins. in the ground for closing cor. of secs. 34 and 35, marked C C 06 on S., P C on N., and 2 grooves on E. faces; from which,  
A mesquite, 8 ins. diam., bears S. 44-3/4° W., 188 lks. dist., marked C C 06 T 1 N R 2 W S 34 B T. No other trees available. Dig pits 24 x 18 x 12 ins. crosswise on each line, E. and W. 3 ft., and S. of stone 7 ft. dist., and raise a mound of earth 4 ft. base, 2 ft. high S. of cor.  
60.08 Cor. No. 1 of tract.

June 18, 1907.

## Tract No. 40.

June 19: At 7h.00m., a.m., l.m.t., I set off 33° 23-1/2' N. on the lat. arc; 23° 26' N. on the decl. arc, and determine a meridian with the solar at the cor. No. 1 of tract No. 40 the S.E. cor., which is a granite stone 18 x 6 x 5 ins., set 12 ins. in the ground, marked 1-40 on NW. face.

Metes and Bounds Survey Td. 1 N., Rg. 2 W.

Chains.	Thence, N.0°02'E.
20.16	Cor.No.2,also cor.No.5 of tract No.39,previously described.
	Thence, N.89°44'W.
39.60	Set a granite stone,18 x 6 x 5 ins.,12 ins.in the ground, for cor.No.3 of tract,marked 3-40 on SE.face.
	Thence, S.0°04'W.
20.18	Set a granite stone,18 x 6 x 5 ins.,12 ins.in the ground, for cor.No.4 of tract,also cor.No.1 of tract 41,marked 4-40 on NE.,and 1-41 on NW.faces; and from this cor. the cor.of secs.27,28,33 and 34 bears S.7°08' W.,19.69 chs.dist.
	Thence, S.89°52'E.
39.59	Cor.No.1 of tract.
-----	
Tract No. 41.	
I commence at cor.No.1 of tract,also cor.No.4 of tract No.40,previously described,and from which the cor.of secs.27,28,33 and 34 bears S.7°08' W.,19.69 chs.dist.	
	Thence,I run, N.0°04'E.
40.18	Set a granite stone 18 x 6 x 5 ins., 12 ins. in the ground for cor.No.2,marked 2-41 on SW.face;
	Thence, N.89°51'W.
2.47	Intersect line bet.secs.27 and 28, 20.26 chs.,S.0°01'E. of the cor.of secs.21,22,27 and 28,and set a granite stone 18 x 6 x 5 ins., 12 ins. in the ground for closing corner of secs.27 and 28,marked C C 06 on N.,P C on S.,with 3 grooves on E.faces; from which, A mesquite,8 ins.diam.; bears N.15-1/2° E.,179 lks. dist., marked C C 06 T 1 N R 2 W S 27 B T. A mesquite, 5 ins.diam., bears N.24-1/2° W.,394 lks. dist.,marked C C 06 T 1 N R 2 W S 28 B T.
20.04	Set a granite stone,18 x 6 x 5 ins., 12 ins.in the ground, for cor.No.3,marked 3-41 on SE.face.
	Thence, S.0°03'W.
40.13	Set a granite stone,18 x 6 x 5 ins.,12 ins.in the ground, for cor.No.4,also cor.No.1 of tract No.42,marked 4-41 on NE. and 1-42 on NW.faces.
	Thence, S.89°35'E.
17.59	Intersect line bet.secs.27 and 28,19.55 chs.N.,0°2'W.of the cor.of secs.27,28,33 and 34,and set a granite stone 18 x 6 x 6 ins.,12 ins.in the ground for closing cor. of secs.27 and 28,marked C C 06 on S.,P C on N.,with 3 grooves on E.faces; from which, A willow,4 ins.diam.,bears S.83-3/4°E.,163 lks.dist., marked C C 06 T 1 N R 2 W S 27 B T. No other tree available. Dig pits 24 x 18 x 12 ins.crosswise on each line,E.and W.,3 ft.,and S.of stone 7 ft. dist.,and raise a mound of earth 4 ft.base,2 ft.high,S. of cor.
20.03	Cor.No.1 of tract. June 19: At this cor.I set off 23°25-1/2'W.on the decl. arc,and observe the sun on the meridian at noon;the resulting lat.is 33°23-1/2'N.
-----	
Tract No.42.	
I commence at cor.No.1 of tract,also cor.No.4 of tract No.41,previously described.	
Thence I run,	

## Metes and Bounds Survey, Tp. 1 N. Rg. 2 W.

- Chains.
- 20.13 N. 0° 03' E.  
Set a granite stone 18 x 6 x 5 ins. 12 ins. in the ground for cor. No. 2, marked 2-42 on S. W. face;  
Thence
- 60.12 N. 89° 43' W.  
Set a granite stone 18 x 6 x 5 ins. 12 ins. in the ground for cor. No. 3, marked 3-42 on S. E. face.  
Thence  
South
- 40.00 Set a granite stone 18 x 8 x 8 ins. 12 ins. in the ground for cor. No. 4, also cor. No. 1 of tract 44, cor. No. 2 of tract No. 47, and cor. No. 3 of tract No. 50, marked 4-42 on N. E., 3-50 on S. E., 2-47 on S. W., and 1-44 on N. W. faces; and from this cor. the cor. of secs. 28, 29, 32 and 33 bears S. 86° 48' W. 232 lks. dist.  
Thence  
S. 89° 27' E.
- 40.05 Set a granite stone 18 x 6 x 6 ins. 12 ins. in the ground for cor. No. 5, marked 5-42 on N. W. face.  
Thence  
N. 0° 02' E.
- 0.25 Intersect line bet. secs. 28 and 33 237 lks. E. of the  $\frac{1}{4}$  sec. cor. bet secs. 28 and 33 and set a granite stone 18 x 6 x 6 ins. 12 ins. in the ground for closing cor. of sec. 28 and 33, marked CC06 on E., PC on W., with 1 groove on S. faces; dig pits 24 x 18 x 12 ins. N. and S. 5 ft. and E. of stone 7 ft. dist.; and raise a mound of earth 4 ft. base, 2 ft. high, E. of cor.
- 20.09 Set a granite stone 18 x 6 x 5 ins. 12 ins. in the ground for cor. No. 6, marked 6-42 on N. W. face.  
Thence  
S. 89° 35' E.
- 20.03 Cor No. 1 of tract.

June 19, 1907

## Tract No. 43.

- At 7hr. 00m. a.m., 1.m.t., I set off 33° 23 1/2' N. on the lat. arc; 23° 27' N. on the dec'l. arc; and determine a meridian with the solar at the cor. No. 1 of tract, ~~thence~~ set a granite stone 18 x 6 x 5 ins. 12 ins. in the ground, and marked 1-43 on N. W. face; and from which the  $\frac{1}{4}$  sec. cor. bet secs. 29 and 32 bears S. 79° 01' W. 20.30 chs. dist.  
Thence I run
- 40.00 North  
Set a granite stone 18 x 6 x 5 ins. 12 ins. in the ground for cor. No. 2, marked 2-43 on S. W. face.  
Thence  
West
- 40.00 Set a granite stone 18 x 6 x 6 ins. 12 ins. in the ground for cor. No. 3, marked 3-43 on S. E. face.  
Thence South
- 40.00 Set a granite stone 18 x 6 x 6 ins. 12 ins. in the ground for cor. No. 4, also cor. No. 3 of tract No. 44, marked 4-43 on N. E. face, and 3-44 on S. E. face.  
Thence East
- 40.00 To cor. No. 1.

## Tract No. 44.

I commence at cor. No. 1, also cor. No. 4 of tract No. 42, cor. No. 3 of tract No. 50, and cor. No. 2 of tract No. 47, previously described, and from which the cor. of secs. 28, 29, 32 and 33 bears S. 86° 48' W. 232 lks. dist.

Metes and Bounds Survey, Tp. 1 N. Rg. 2 W.

Chains.	
	Thence I run North
20.00	Set a granite stone 18x 6x 5 ins. 12 ins. in the ground for cor. No. 2, marked 2-44 on S. W. face.
	Thence West
2.30	Intersect line bet. secs. 28 and 29 20.13 chs. N. 0° 02' W. from the cor. of secs. 28, 29, 32 and 33, and set a granite stone 20 x 8 x 6 ins. 15 ins. in the ground for closing cor. of secs. 28 and 29, marked CC06 on N., PC on S., with 4 grooves on E. faces; from which A mesquite 18 ins. diam, bears N. 28° 15' E. 82 lks. dist., marked CC06T1NR2WS28BT A mesquite 5 ins. diam., bears N. 31 1/4° W. 202 lks. dist., marked CC06T1NR2WS29BT
79.67	Cor. No. 3, also cor. No. 4 of tract No. 43, previously described.
	Thence South
20.13	Intersect line bet. secs. 29 and 32, 268 lks. E. of the cor. of secs. 29, 30, 31 and 32, set a granite stone 18 x 6 x 5 ins. 12 ins. in the ground for closing cor. of secs. 29 and 32, marked CC06 on W. face, PC on E. and 1 groove on S. faces; dig pits 24 x 18 x 12 ins. crosswise on each line, N. and S. of stone 3 ft. and W. of stone 7 ft. dist; and raise a mound of earth 4 ft. base, 2 ft. high, W. of cor.
	Thence
40.05	S. 0° 33' E. Set a granite stone 18 x 6 x 5 ins. 12 ins. in the ground for Cor. No. 4, also cor. No. 3 of tract 45, marked 4-44 on N. E. , and 3-45 on S. E. faces.
	Thence
39.65	N. 89° 53' E. Set a granite stone 18 x 6 x 6 ins. 12 ins. in the ground for cor. No. 5, also cor. No. 6 of tract No. 47, cor. No. 3 of tract No. 48, and cor. No. 2 of tract No. 45, marked 5-44 on N. W. , 6-47 on N. E., 3-48 on S. E., and 2-45 on S. W. faces.
	Thence
	North
20.05	Set a granite stone 18 x 6 x 5 ins. 12 ins. in the ground for cor. No. 6, also cor. No. 5 of tract No. 47, marked 6-44 on N. W. and 5-47 on S. E. faces.
	Thence
19.94	N. 89° 57' E. Set a granite stone 18 x 6 x 5 ins. 12 ins. in the ground for cor. No. 7, also cor. No. 4 of tract No. 47, marked 7-44 on N. W., and 4-47 on S. E. faces.
	Thence
	North
20.05	Set a granite stone 18 x 6 x 5 ins. 12 ins. in the ground for cor. No. 8, also cor. No. 3 of tract No. 47, marked 8-44 on N. W., and 3-47 on S. E. faces.
	Thence
	East
19.92	Cor. No. 1 of tract. June 20. At this cor. I set off 23° 26 1/2' N. on the des'l. arc; and observe the sun on the meridian at noon; the resulting lat. is 33° 23 1/2' N.
	Tract No. 45.
	I commence at cor. No. 1 of tract which is the old standard 1/4 sec. cor. on the S. bdy. of secs. 32
	Thence I run
	North
39.95	Cor. No. 2, also cor. No 3 tract No. 48, cor. No. 6 tract No. 47, and cor. No. 5 tract No. 44, previously described.

## Metes and Bounds Survey, Tp. 1 N., Rg. 2 W.

Chains.	
	Thence S. 89° 53' W.
39.65	Cor. No. 3., also cor. No. 4 of tract No. 44, previously described.
	Thence N. 89° 48' W.
3.04	Intersect line bet. secs. 31 and 32, 13 lks. S. 0° 02' E. of the true point for $\frac{1}{4}$ sec. cor. bet. secs. 31 and 32 Set a granite stone 18 x 6 x 5 ins. 12 ins. in the ground for closing cor. of secs. 31 and 32, marked CC06 on N. PC on S., with 5 grooves on E. faces; There are no bearing trees available, and it is impossible to dig pits as the cor. spts under a wire fence between two ditches.
20.20	Set a granite stone 18 x 6 x 5 ins. 12 ins. in the ground for cor. No. 4, marked 4-45 on S. E. face.
	Thence S. 0° 28' W.
19.93	Set a granite stone 18 x 6 x 5 ins. 12 ins. in the ground for cor. No. 5, also cor. No. 4 tract 46, marked 5-45 on N. E., and 4-46 on S. E. faces.
	Thence S. 89° 48' E.
20.04	Set a granite stone 18 x 6 x 5 ins. 12 ins. in the ground for cor. No. 6, also cor. No. 3 tract No 46, marked 6-45 on N., and 3-46 on S. faces.
	Thence N. 89° 55' E.
19.92	Set a granite stone 18 x 6 x 5 ins. 12 ins. in the ground for cor. No. 7, also cor. No. 2 tract No. 46, marked 7-45 on N. E., and 2-46 on S. W. faces.
	Thence S. 0° 25' W.
19.95	Set a granite stone 18 x 6 x 5 ins. 12 ins. in the ground for cor. No. 8, also cor. No. 1 of tract No 46, marked 8-45 on N. E., and 1-46 on N. W. faces; and from this cor. the new standard $\frac{1}{4}$ sec. cor. on the S. bdy. of sec 32 bears N. 89° 56' E. 17.54 chs. dist.
	Thence N. 89° 56' W.
20.05	Cor No. 1. of tract.
Tract No. 46.	
	I commence at Cor. No. 1 of tract, also cor. No. 8 of tract No. 46, previously described, from which the new standard $\frac{1}{4}$ sec. cor. on the S. bdy. of sec. 32, bears N. 89° 56' E. 17.54 chs. dist.
	Thence I run N. 0° 25' E.
19.95	Cor. No. 2, also cor. No. 7 tract 46, previously described.
	Thence S. 89° 55' W.
19.92	Cor. No. 3, also cor. No. 6 tract 45, previously, described
	Thence N. 89° 48' W.
20.04	Cor. No 4, also cor. No 5 tract No. 45, previously described
	Thence S. 0° 28' W.
19.93	Set a granite stone 18 x 6 x 5 ins. 12 ins. in the ground for cor. No. 5, marked 5-46 on N. E. face.
	Thence S. 89° 49' E.
19.88	The old standard cor. of secs. 31 and 32, previously described.
	Thence N. 89° 56' E.

Metes and Bounds Survey, Tp. 1 N. Rg. 2 W.

Chains  
20.00

Cor No. 1 of tract.

June 20, 1907.

Tract No. 47.

June 21: At 7h. 00m. a.m., l.m.t., I set off  $33^{\circ} 23' 1/2''$  N. on the lat. arc;  $23^{\circ} 28'$  N. on the dec'l. arc; and determine a meridian with the solar at cor. No. 1 of tract identical with cor. No. 4 tract 45, cor. No. 3 tract 50 and cor. No 2 tract 48, a granite stone 18 x 8 x 8 ins. set 12 ins. in the ground and marked 4-53 on N. E., 3-54 on S. E., 2-48 on S. W. and 1-47 on N. W. faces. and from which the  $\frac{1}{4}$  sec. cor. bet. secs. 32 and 33 bears S.  $87^{\circ} 09'$  W. 241 lks. dist.

Thence I run  
N.  $0^{\circ} 08'$  W.

40.01 Cor. No. 2, identical with cor. No. 1 tract No. 44, cor. No. 4 tract No. 42, cor. No. 3 tract 50, previously described.

Thence I run  
West 19.92

19.92 Cor. No. 3, identical with cor. No. 8 tract No. 44, previously described.

Thence  
South

20.05 Cor. No. 4, identical with cor. No. 7 tract 44, previously described.

Thence  
S.  $89^{\circ} 57'$  W.

19.94 Cor. No. 5, identical with cor. No. 6 tract 44 previously described.

Thence  
South

20.05 Cor. No. 6, identical with cor. No. 5 tract No. 44, cor. No. 2 tract No. 45, and cor. No. 3 tract 48. previously described.

Thence  
N.  $89^{\circ} 53'$  E.

39.92 Cor. No. 1 of tract.

Tract No. 48.

I commence at cor. No.1 of tract, identical with cor. No. 2 of tract No. 49, a granite stone 18 x 6 x 5 ins. set 12 ins. in the ground, marked 1-48 on N. W., and 2-49 on S. W. faces.

Thence I run  
N.  $10^{\circ} 08'$  W.

20.01 Cor. No. 2, identical with cor. No. 3 tract 54, cor. No. 4 tract 53, and cor. No. 1 tract No. 47, previously described and from which the  $\frac{1}{4}$  sec. cor. bet. secs. 32 and 33 bears S.  $87^{\circ} 09'$  W. 241 lks. dist.

Thence  
S.  $89^{\circ} 53'$  W.

39.92 Cor. No. 3 identical with cor. No. 6 tract No. 47, cor. No. 5 tract No. 44, and cor. No. 2 tract 45, previously described.

Thence  
South

19.96 Set a granite stone 18 x 6 x 5 ins. 12 ins. in the ground for cor. No. 4, also cor. No. 3 tract No. 49, marked 4-48 on N. E. and 3-49 on S. E. faces.

Thence  
N.  $89^{\circ} 56'$  E.

39.96 Cor. No. 1 of tract.

## Metes and Bounds Survey, Tp. 1 N. Rg. 2 W.

Chains.

## Tract No. 49.

- I commence at cor. No. 1 of tract, the old standard cor. of secs. 32 and 33, previously described, from which the new standard cor. of secs. 32 and 33 bears West 249 lks. dist.
- Thence I run  
N. 0° 08' W.
- 20.01 Cor. No. 2, identical with cor. No. 1 tract No. 48 previously described.
- Thence  
S. 89° 56' W.
- 39.96 Cor. No. 3, identical with cor. No. 4 tract No. 48, previously describe.
- Thence  
South 19.
- 19.97 Cor. No. 4, the old standard  $\frac{1}{4}$  sec. cor. on the S. bdy. of sec. 32, previously described.
- Thence  
East
- 39.98 Cor. No. 1 of tract.

## Tract No. 50.

- I commence at cor No. 1 of tract, also cor. No. 2 of tract No. 51, a granite stone 18 x 6 x 5 ins. set 12 ins. in the ground and marked 1-50 on N. W. and 2-51 on S. W. faces.
- Thence I run  
North 20
- 20.00 Set a granite stone 18 x 6 x 5 ins. 12 ins. in the ground for cor. No. 2, also cor. No. 3 of tract No. 56, marked 2-50 on S. W. and 3-56 on S. E. faces; and from this cor. the cor. of secs. 27, 28, 33 and 34 bears N. 75° 11' W. 250 lks. dist.
- Thence  
N. 89° 27' W.
- 2.50  
2.42 Intersect line bet. secs. 33 and 34 62 lks. S. of the cor of secs. 27, 28, 33 and 34, and set a granite stone 24 x 10 x 8 ins. 18 ins. in the ground for closing cor. of secs. 33 and 34, marked CC06 on N., PC on S., with 3 grooves on E. faces; from which  
A willow 4 ins. diam. bears N. 88 1/2° E. 163 lks. dist., marked CC06T1NR2WS34BT.  
No other tree available. Dig pits 24 x 18 x 12 ins. crosswise on each line, E. and W' 3 ft. and N. of stone 7 ft. dist.; and raise a mound of earth 4 ft. base, 2 ft. high, N. of cor.
- 80.00 Cor. No. 3, identical with cor. No. 2 tract No. 47, cor. No. 1 tract No. 44, and cor. No. 4 tract No. 42, previously described.
- Thence  
S. 0° 08' E.
- 20.00 Set a granite stone 18 x 6 x 5 ins. 12 ins. in the ground for cor. No. 4, also cor. No. 3 tract No. 56, marked 4-50 on N. E. and 3-53 on S. E. face.
- Thence  
S. 89° 27' E.
- 80.06 The cor. No. 1 of tract.

June 21, 1907

## Tract No. 51.

- June 22; At 7h. 00m. a.m., 1.m.t., I set off 33° 23' N. on the lat. arc; 25° 28' N. on the decl. arc; and determine a meridian with the arc at the cor. No. 1 of tract; also cor. No. 4 of tract No. 56, cor. No. 3 of tract No. 58 and cor. No. 2 of tract No. 65.

Chains.

a granite stone 18 x 6 x 5 ins. 12 ins. in the ground marked 1-51 on N. W., 4-56 on N. E., 3-58 on S. E. and 2-55 on S. W. faces; and from which the  $\frac{1}{4}$  sec. cor. bet. secs. 33 and 34 bears N.  $75^{\circ} 11' W.$  250 lks. dist.  
Thence I run  
North  
20.00 Cor. No. 2, identical with cor. No. 1 of tract No. 50 previously described  
Thence  
N.  $89^{\circ} 27' W.$   
20.02 Cor. No. 3. Set a granite stone 18 x 6 x 5 ins. 12 ins. in the ground for. cor. No. 3, also cor. No. 2 of tract No. 52, marked 3-51 on S. E. and 2-52 on S. W. faces.  
Thence  
South  
20.00 Set a granite stone 18 x 6 x 5 ins. 12 ins. in the ground for cor. No. 4, also cor. No. 1 of tract No. 52, marked 4-51 on N. E. and 1-52 on N. W. faces.  
Thence  
S.  $89^{\circ} 27' E.$   
20.01 Cor. No. 1. of tract.

Tract No. 52.

I commence at cor. No. 1 of tract, identical with cor. No. 4 of tract No. 51, previously described, from which the  $\frac{1}{4}$  sec. cor. bet. secs. 33 and 34 bears N.  $88^{\circ} 32' W.$  17.59 chs. dist.  
Thence I run  
North  
20.00 Cor. No. 2, identical with cor. No. 3 of tract No. 51, previously described.  
Thence  
N.  $89^{\circ} 57' W.$   
40.03 Set a granite stone 18 x 6 x 5 ins. 12 ins. in the ground for cor. No. 3, also Cor. No. 2 of tract No. 53, marked 3-52 on S. E. and 2-53 on S. W. faces.  
Thence  
S.  $0^{\circ} 05' E.$   
20.00 Set a granite stone 18 x 6 x 5 ins. 12 ins. in the ground for. cor. No. 4, also cor. No. 1 of tract No 53, marked 4-52 on N. E., and 1-53 on N. W. faces.  
Thence  
S.  $89^{\circ} 27' E.$   
40.01 Cor. No. 1 of tract.  
At this cor. I set off  $23^{\circ} 27' N.$  on the dec'l. arc; and observe the sun on the meridian at noon, June 22; the resulting lat. is  $33^{\circ} 23' N.$

Tract No. 53.

I commence at cor. No. 1 of tract, identical with cor. No. 4 of tract No. 52, previously described  
Thence I run  
N.  $0^{\circ} 05' W.$   
20.00 Cor. No. 2, identical with cor. No. 3 of tract No. 52, previously described.  
Thence  
N.  $89^{\circ} 27' W.$   
20.01 Cor. No. 3, identical with cor. No. 4 of tract No. 50, previously described.  
Thence  
S.  $0^{\circ} 08' E.$   
20.01 Cor. No. 4, identical with cor. No. 3 of tract No. 54, cor. No. 2 of tract No. 48, cor. No. 1 of tract No. 47, previously described, and from this cor. the  $\frac{1}{4}$  sec. cor. bet. secs. 32 and 33 bears S.  $87^{\circ} 09' W.$  241 lks. dist.  
Thence



## Metes and Bounds Survry, Tp. 1 N. Rg. 2 W.

Chains.

20.00 S. 89° 27' E.  
Cor. No. 1 of tract.

June 22, 1907.

Tr

## Tract No. 54.

June 23: At 7h. 00m. a.m., l.m.t., I set off 33° 23' N. on the lat. arc; 23° 28' N. on the dec'l. arc; and determine a meridian with the solar at cor. No. 1 of tract, which is the old standard  $\frac{1}{4}$  sec. cor. on the S. dby. of sec. 33, identical with cor. No. 4 of tract No. 55, and from which the new standard cor. on the S. bdy. of sec. 33 bears N. 89° 28' W. 243 lks. dist.

Thence I run

40.00 N. 0° 02' W.  
Set a granite stone 18 x 6 x 5 ins. 12 ins. in the ground for cor. No. 2, also cor. No. 3 of tract No. 55, marked 2-54 on S. W. and 3-55 on S. E. faces.

Thence

40.00 N. 89° 27' W.  
Cor. No. 3, identical with cor. No. 2 tract No. 48, cor. No. 1 tract No. 47, cor. No. 4 tract No. 53. previously described.

Thence

40.02 S. 0° 08' E.  
Cor. No. 4., identical with cor. No. 1 of tract No. 49, and the old standard cor. of secs. 32 and 33.

Thence

39.94 S. 89° 28' E.  
Cor. No. 1 of tract.  
June 23: At this cor. I set off 23° 27' N. on the dec'l. arc; and observe the sun on the meridian at noon; the resulting lat. is 33° 23' N. ✓

## Tract No. 55.

I commence at cor. No. 1, the old standard cor. of secs. 33 and 34, also cor. No. 4 of tract No. 58, from which the new standard cor. of secs. 33 and 34 bears N. 89° 31' W. 242 lks. dist.

Thence I run

Worth North  
40.00 Cor. No. 2, identical with cor. No. 1 tract No. 51, cor. No. 4 tract No. 56, and cor. No. 3 tract No. 58. previously described.

Thence

40.02 N. 89° 27' W.  
Cor. No. 3, identical with cor. No. 2 of tract No. 54, previously described.

Thence

40.00 S. 0° 02' E.  
Cor. No. 4, identical with cor. No. 1 of tract No. 54, previously described

Thence

39.99 S. 89° 31' E.  
Cor. No. 1 of tract.

June 23, 1907

## Tract No. 56

June 24: At 7h. 00m. a.m., l.m.t., I set off 33° 23' N. on the lat. arc; 23° 27' N. on the dec'l. arc; and determine a meridian with the solar at the cor. No. 1 also cor. No. 2 of tract No. 50. A granite stone 18 x 6 x 5 ins. 12 ins. in the ground marked 1-56 on N. W. and 2-56 on S. E. faces.

Metes and Bounds Survey, Tp. 1 N. Rg. 2 W.

Chains

- Thence  
N. 0° 06' W.
- 60.00 Set a granite stone 18 x 6 x 5 ins. 12 ins. in the ground for cor. No. 2, marked 2-56 on S. W. face.
- Thence  
West
- 59.84 Cor. No. 3, identical with cor. No. 2 of tract No. 50, previously described.
- Thence  
South
- 40.00 Cor. No. 4, identical with cor. No. 3 of tract No. 58, cor. No. 2 of tract No. 55, and cor. No. 1 of tract No. 51, previously described, and from this cor. the  $\frac{1}{4}$  sec. cor. bet. secs. 33 and 34 bears N. 75° 11' W. 250 lks. dist.
- Thence  
S. 89° 57' E.
- 39.72 Set a granite stone 18 x 6 x 5 ins. 12 ins. in the ground for Cor. No. 5, also cor. No. 2 of tract No. 57, marked 5-56 on N. E. and 2-57 on S. W. faces.
- Thence  
S. 0° 12' E.
- 20.00 Set a granite stone 18 x 6 x 5 ins. 12 ins. in the ground for cor. No. 6, also cor. No. 1 of tract No. 57, marked 6-56 on N. E. and 1-57 on N. W. faces;
- Thence  
S. 89° 55' E.
- 19.96 Cor. No. 1 of tract.  
June 24: At this cor. I set off 23° 26' N. on the dec'l. arc; and observe the sun on the meridian at noon, the resulting lat. is 33° 23' N. ✓

Tract No. 57.

- I commence at cor. No. 1, identical with cor. No. 6 of tract No. 56, previously described and from which the new standard cor. of secs. 34, and 35, bears S. 61° 56' E. 42.67 chs. dist.
- Thence I run  
N. 0° 12' W.
- 20.00 Cor. No. 2, identical with cor. No. 5 of tract No. 56, previously described.
- Thence  
N. 89° 57' W.
- 19.86 Set a granite stone 18 x 6 x 5 ins. 12 ins. in the ground for cor. No. 3, also cor. No. 2 of tract No. 58, marked 3-57 on S. E. and 2-58 on S. W. faces;
- Thence  
S. 0° 06' E.
- 20.00 Set a granite stone 18 x 6 x 5 ins. 12 ins. in the ground for cor. No. 4, also cor. No. 3 of tract No. 59, marked 4-57 on N. E. and 3-59 on S. E. faces.
- Thence  
S. 89° 55' E.
- 19.89 Cor. No. 1 of tract.

June 24, 1907

Tract No. 58.

June 25; At 7h. 00m. a.m., 1.m.t., I set off 33° 23' N. on the lat. arc; 23° 26' N. on the dec'l. arc; and determine a meridian with the solar at cor. No. 1 of tract also cor. No. 4 of tract No. 59, a granite stone 18 x 6 x 5 ins. set 12 ins. in the ground, marked 1-58 on N. W. and 4-59 on N. E. faces; and from which the new standard cor. of secs. 33 and 34 bears N. 89° 53' W. 22.34 chs. dist.

Thence I run

## Metes and Bounds Survey, Td. 1 N. Rg. 2 W.

Chains.	
40.00	N. 0° 06' W. Cor. No. 2, identical with cor. No. 3 of tract No. 57, previously described. Thence N. 89° 57' W.
19.86	Cor. No. 3, identical with cor. No. 2 tract 55, cor. No. 1 tract No. 51, cor. No. 4 of tract No. 56, previously described Thence South 4
40.00	Cor. No. 4, identical with cor. No. 1 of tract No. 55, previously described. Thence S. 89° 53' E.
19.92	Cor. No. 1.

---

 Tract No. 59.

I commence at cor. No. 1 a granite stone 18 x 6 x 5 ins.  
set 12 ins. in the ground, marked 1-59 on N. W. face.  
Thence I run

20.00	N. 0° 06' W. Cor. No. 2, identical with cor. No. 1 of tract No. 56, previously described. Thence N. 89° 55' W.
39.85	Cor. No. 3, identical with cor. No. 4 of tract No. 57, previously described. Thence S. 0° 06' E.
20.00	Cor. No. 4, identical with cor. No. 1 of tract No. 58, previously described. Thence S. 89° 53' E.
39.84	Cor. No. 1 of tract.

June 25, 1907.

---

 Tract No. 60.

June 26: At 7h. 00m. a.m., l.m.t., I set off 33° 23' N.  
on the lat. arc; 23° 24 1/2' N. on the dec'l. arc; at  
Cor. No. 1 of tract the standard cor. of Tps. 1 N. Rgs.  
1 and 2. W.  
Thence I run

80.00	North Cor. No 2. of tract at point for. cor. of secs 25, 30, 31 and 36 in bed of Gila River. Thence West
79.77	Set 7 1/2 granite stone 18 x 6 x 5 ins. 12 ins. in the ground for cor. No. 3, marked 3-60 on S. E. face; June 26; At this cor. I set off 23° 23 1/2' N. on the dec dec'l. arc; and observe the sun on the meridian at noon the resulting lat. is 33° 23 1/2' N. Thence South
80.38	Cor. No. 4 of tract, the old standard cor. of secs. 35 and 36. Thence S. 89° 53' E.
39.97	Cor. No. 5 of tract, the old standard 1/4 sec. cor. on S. b bay. of sec. 36. Thence N. 89° 21' E.
39.80	Cor. No. 1 of tract.

June 26, 1907

*John P. Hesser*  
U.S. Deputy Surveyor

LIST OF NAMES.

BOOK 2056

A list of the names of the individuals employed by John F. Hesse

....., United States Deputy Surveyor, to assist in running, measuring, and marking the lines and corners described in the foregoing field notes of the survey of the entries filings and school sections, by Metes and Bounds, of Tp. 1N. Rg. 2W showing the respective capacities in which they acted:

A. N. Oliver....., *Chainman.*

H. S. Young....., *Chainman.*

C. C. Collins....., *Moundman.*

....., *Moundman.*

Ben Jones....., *Arman.*

....., *Arman.*

W. W. Shawk....., *Flagman.*

FINAL OATH OF ASSISTANTS.

We hereby certify that we assisted John F. Hesse

....., United States Deputy Surveyor, in surveying all those parts or portions of the entries, filings and school sections, by Metes and Bounds, of Tp. 1 N. Rg. 2W.

..... of the Gila and Salt River meridian, Territory of Arizona, which are represented in the foregoing field notes as having been surveyed by him and under his direction; and that said survey has been in all respects, to the best of our knowledge and belief, well and faithfully surveyed, and the corner monuments established, according to the instructions furnished by the United States Surveyor General for Arizona

A. N. Oliver....., *Chainman.*

H. S. Young....., *Chainman.*

C. C. Collins....., *Moundman.*

Ben Jones....., *Arman.*

W. W. Shawk....., *Arman.*

....., *Flagman.*

Subscribed and sworn to before me this 26<sup>th</sup> day of June 1907, 189



John F. Hesse  
*U. S. Deputy Surveyor*

154  
BOOK 2056

FINAL OATH OF UNITED STATES DEPUTY SURVEYOR.

I, John F. Hesse, United States Deputy Surveyor, do solemnly swear that, in pursuance of a contract received from Frank S. Ingalls United States Surveyor General for Arizona, bearing date of the 10th. day of November 1906, 1896, I have well, faithfully, and truly, in my own proper person, and in strict conformity with the instructions furnished by the United States Surveyor General for Arizona, the Manual of Surveying Instructions, and the laws of the United States, surveyed all those parts or portions of the entries, filings and school sections, by Metes and Bounds, of Tp. 1 N. Rg. 2 W.

..... of the Gila and Salt River meridian, in the Territory of Arizona, which are represented in the foregoing field notes as having been surveyed by me, and under my direction; and I do further solemnly swear that all the corners of said survey have been established and perpetuated in strict accordance with the Manual of Surveying Instructions, and the special written instructions of the United States Surveyor General for Arizona and in the specific manner described in the field notes, and that the foregoing are the original field notes of such survey; and should any fraud be detected, I will suffer the penalty of perjury under the provisions of an Act of Congress approved August 8, 1846.

*John F. Hesse*  
United States Deputy Surveyor.

Subscribed by said John F. Hesse, and sworn to before me }  
this 3<sup>rd</sup> day of July 1907, 1897



*Frank S. Ingalls*  
U.S. Surveyor General  
for Arizona.

APPROVAL.

OFFICE OF THE UNITED STATES SURVEYOR GENERAL,

Phoenix, Ar. Nov. 15<sup>th</sup> 1907

The foregoing field notes of the survey of the entries, filings and school sections by metes and bounds of T1N R2 W of the Gila and Salt River Base and Meridian, in the territory of Arizona.

executed by John F. Hesse, U.S. deputy surveyor under his contract No. 142, dated November 10<sup>th</sup> 1906, having been critically examined, and the necessary corrections and explanations made, the said field notes, and the surveys they describe, are hereby approved.

*Frank S. Ingalls*  
United States Surveyor General.

I certify that the foregoing transcript of the field notes of the above-described surveys in....., has been correctly copied from the original notes on file in this office.

United States Surveyor General.