

Capitol
July 1/18 5.00.

4-679.

MA. 11. 1908

25

Book. B.

C (1)

BOOK 2085

2085

FIELD NOTES

OF THE SURVEY OF THE

2085

East, West and South Boundaries of Township

2085

No. 31 North Range No. 11 East

2085

Of the *Gila* ^{and} *Salt River Base* and Meridian,

in the Territory of Arizona

AS SURVEYED BY

Sidney E. Blount

United States ^{Examiner of Surveys} Deputy Surveyor,

Under his Contract No. *Instructions*, dated *Oct. 2nd*, 1907.

Survey commenced *November 19th*, 1907

Survey completed *November 22nd*, 1907

6-151

2085

2085

2085

NAMES AND DUTIES OF ASSISTANTS.

J. E. Keub Compassman

P. L. Warner Chairman

F. D. Kline Chairman

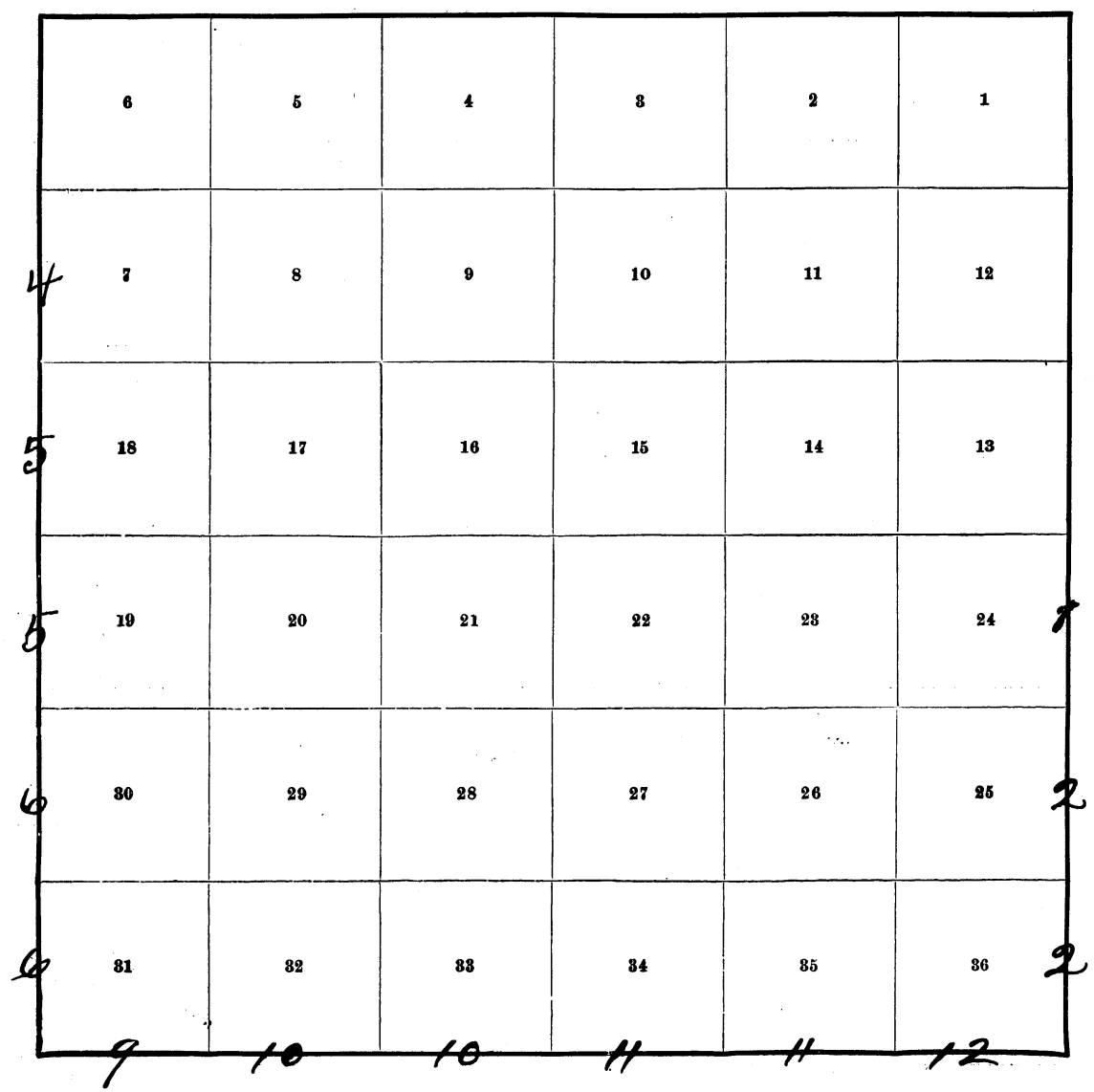
Norman Collins Manducan

H. L. May Flagman

BOOK 2085

INDEX DIAGRAM.

Township 31 North, Range 11 East



Meanders Page.....

PRELIMINARY OATHS OF ASSISTANTS.

WE, and
do solemnly swear that we will well and faithfully execute the duties of chainmen; that we will level the chain upon even and uneven ground, and plumb the tally pins, either by sticking or dropping the same; that we will report the true distances to all notable objects, and the true lengths of all lines that we assist in measuring, to the best of our skill and ability, and in accordance with instructions given us, in the survey of

....., *Chainman.*

....., *Chainman.*

Subscribed and sworn to before me this }
day of, 190 }



WE, and
do solemnly swear that we will well and truly perform the duties of moundmen in the establishment of corners, according to the instructions given us, to the best of our skill and ability, in the survey of

....., *Moundman.*

....., *Moundman.*

Subscribed and sworn to before me this }
day of, 190 }



WE, and
do solemnly swear that we will well and truly perform the duties of axmen in the establishment of corners and other duties, according to instructions given us, to the best of our skill and ability, in the survey of

....., *Axman.*

....., *Axman.*

Subscribed and sworn to before me this }
day of, 190 }



I,, do solemnly swear that I will well and truly perform the duties of flagman according to instructions given me, to the best of my skill and ability, in the survey of

....., *Flagman.*

Subscribed and sworn to before me this }
day of, 190 }



Survey of the E. Boundary of Twp. 31 N. R. 11 E.

Chains

Survey commenced Nov. 19th 1907 and executed with a Jany and Sons light mountain transit No. 10 with solar attachment. The horizontal limb is provided with two double verniers placed opposite to each other reading to single minutes of arc which is also the least count of the vernier of the latitude and declination arcs.

Knowing from recent tests that the instrument is in satisfactory adjustment I proceed as follows:

November 19th 1907. Det. off. 36° 05' N. on the lat. arc 19° 14' 1/2 S. on the decl. arc and at 7^h 45^m a.m. line 1. determine a meridian with the solar at the cor. of sec. 13, 18, 19 and 24. previously described. in my field notes of the retracements of this boundary, thence Drive.

South Det. sec. 19 and 24

Over rolling sand hills covered with scattering greasewood brush and bunch grass

- 17.50 Foot of sand ridge bears N. and S.W. and steeply over N.W. slope
- 40.00 Set a line stone 12 x 6 x 6 ins. 8 ins. in the ground for 1/4 sec. cor. marked 1/4 on W. face, and raise a mound of stone 2 ft. tall 1 1/2 ft. high W. of cor. This impracticable
- 40.50 Top of ascent 10 ft. above cor. on W. face of ridge. desc. steeply over sand stone ledge into ravine.
- 44.05 Foot of descent in dry ravine course N.W. ascend steeply N. slope of mesa
- 45.20 Top of ridge bears N. and S.W. desc.
- 49.45 Dry ravine course N.W. asc. abruptly.
- 61.00 Top of ascent on N. edge of mesa bears N.E. and S.W. thence over rolling land across top of mesa
- 76.50 South edge of mesa bears N. and S.W. desc steeply
- 80.00 Set a line stone 17 x 6 x 6 ins. 12 ins. in the ground for cor. of sec. 19, 24, 25 and 30 marked with 4 notches on N. and 2 notches

H. Davis

ow S. edges. dig pits 18x18x12 ins in each sec.
5 1/2 ft. dist and raise a mound of earth 4 ft.
base 2 ft high W. of cor.
Land rolling and hilly.
Soil sandy and stony. 3rd and 4th rate
No timber.

South Bet. sec 25 and 30, Twp. 31 N. R. 11 E.
Slope of Mesa covered with scattering quercus
bush and bunch grass

40.00 Set a line stone 20x8x4 ins, 15 ins in the
ground, for 1/4 sec. cor. marked 1/4 on W. face,
dig pits 18x18x12 ins. N and S of stone 3 ft. dist.
and raise a mound of earth 3 1/2 ft. base, 1 1/2
ft. high W. of cor.

50.00 Enter circular valley toward N. W. and S. W.
thence over rolling sandy land.

80.00 Set a line stone 14x8x7 ins, 10 ins in
the ground for cor. of sec. 25 30 31 and 36
marked with 5 notches on N. and 1 notch
on S. edges. dig pits 18x18x12 ins in
each sec. 5 1/2 ft. dist and raise a mound
of earth 4 ft. base. 2 ft. high W. of cor.
Land hilly and rolling.
Soil sandy 2nd and 3rd rate
No timber.

NOTE November 19th At the above described cor.
I set off. 19° 19' S. on the decl. arc and at
11^h 45^m a m. l. m. l. observed the sun on
the meridian the resulting latitude
being 36° 04' N. nearly.

South Bet. sec. 31 and 36. Over
nearly level sandy valley land covered
with scattering quercus bush and
bunch grass

40.00 Set a line stone 16x7x5 ins, 12 ins in
the ground for 1/4 sec. cor. marked 1/4
on W. face. dig. pits 18x18x12 ins N and
S. of stone 3 ft. dist. and raise a mound.

80.00 of earth 3 1/2 ft. base, 1 1/2 ft. high W. of cor
Set a lime stone 16 x 9 x 5 ins, 12 ins. in
the ground. for Cor. of Twp. 30 and 31 N.
R. 11 and 12 E., marked T 31 N on N.E.
R 12 E on S.E. T 30 N. on S.W. and R 11 E.
on W. face. with 6 notches on N.E., S.
and W. edges, dig pits 24 x 24 x 12 ins on
line N.E. and W. of stone 4 ft. and S.
8 ft. dist. and raise a mound of earth
5 ft. base 2 1/2 ft. high S. of Cor.
Land rolling
Soil sandy 2nd and 3rd rate.
No timber

November 19th 1907

Survey Commenced November 20th 1907 and executed with a Young and Sons light mountain transit No. 10 with solar attachment. The horizontal limb is provided with two double verniers placed opposite to each other reading to single minutes of arc which is also the least count of the verniers of the latitude and declination arcs.

Knowing from recent tests of the instrument on the Meridian established by me by Polaris Observations near the Indian School at Puba Ariz that the adjustments are perfect. I proceed as follows.

Nov 20th 1907. At 8^h 46^m a.m. l.m.t. -
Set off $36^{\circ} 07' N.$ on the hor. arc. $19^{\circ} 30' \frac{1}{2} S$ on the decl. arc and determine a true meridian with the solar at the cor. of sec. 1, 6, 7 and 12 on the West boundary of the township which is a lime stone $7 \times 4 \times 6$ ins. above ground. firmly set marked and witnessed as described in the original field notes. Thence I run

South Bet. sec 7 and 12.

Over low rolling sand hill. Covered with scattering gilwood and sage brush.

20.50 Top of mesa base NW and SE. are steeply

26.00 Top of mesa base NW and SE. into rolling land. base NW and SE.

40.00 Set a lime stone $18 \times 13 \times 4$ ins. $1 \frac{1}{2}$ ins. in the ground for cor. marked 4 on W. face, dig pits $18 \times 18 \times 12$ ins. N and S. of stone 3 ft. dia and raise a mound of earth $3 \frac{1}{2}$ ft. base $1 \frac{1}{2}$ ft. high W. of cor.

80.00 Set a lime stone $20 \times 7 \times 7$ ins. 15 ins. in the ground for cor. of sec. 7, 12, 13 and 18 marked with 2 notches on N. and 4 notches on S. edges, dig pits $18 \times 18 \times 12$ ins. in each sec. $5 \frac{1}{2}$ ft. dia and raise a mound of earth 4 ft. base 2 ft. high W. of cor. Land rolling and hilly. Soil sandy 3rd rate.

No timber

South Beh. sec. 13 and 18.

Over rolling sandy mesa land covered with scattering greasewood brush and bunch grass

40.00

Set a lime stone 14x14x4 ins, 10 ins in the ground for $\frac{1}{4}$ sec. cor. marked $\frac{1}{2}$ on W. face, dig pits 18x18x12 ins N and S. of stone 3 ft. dist, and raise a mound of earth $3\frac{1}{2}$ ft. base, $1\frac{1}{2}$ ft. high W. of cor.

80.00

Set a lime stone 20x15x4 ins, 15 ins in the ground for cor. of sec. 13, 18, 19 and 24 marked with 3 notches on N. and S. edges dig pits 18x18x12 ins. in each sec. $5\frac{1}{2}$ ft. dist and raise a mound of earth 4 ft. base 2 ft. high W. of cor.

Land rolling

Soil sandy 3rd rate

No timber

NOTE

At this cor. I set off $19^{\circ}33'$ S. on the decl. arc and at 11^h46^m a.m. sent observed the sun on the meridian, the resulting latitude being $36^{\circ}06'N$.

South Beh. sec 19 and 24

Descend gently on S.W. slope of mesa on sandy land covered with scattering sage brush greasewood and bunch grass

40.00

Set a lime stone 15x12x4 ins. 10 ins. in the ground for $\frac{1}{4}$ sec. cor. marked $\frac{1}{2}$ on W. face dig pits 18x18x12 ins. N and S. of stone 3 ft. dist. and raise a mound of earth $3\frac{1}{2}$ ft. base $1\frac{1}{2}$ ft. high W. of cor.

80.00

Set a blue lime stone 24x13x3 ins. 18 ins. in the ground for cor. of sec. 19, 24, 25 and 30, marked with 4 notches on N. and 2 notches on S. edges, dig pits 18x18x12 ins in each sec $5\frac{1}{2}$ ft. dist and raise a mound of earth 4 ft. base 2 ft. high W. of cor.

6
33
Survey of the West boundary of Twp. 31 N., R. 11 E.
Chains

BOOK 2085

Land rolling and hilly.
Soil sandy 3rd rate
No timber

South Beh. secs 25 and 30
Over rolling sandy land covered with
scattering sage and greasewood brush
and bunch grass.

20.00 North edge of Mesa base NW and SE.
thence over nearly level land

27.00 South edge of Mesa base NW and SE. desc.
rapidly over S.E. slope

29.10 Foot of descent in dry ravine corner SE.
asc.

36.50 Top of ascent on North edge of Mesa
base NW and SE.

40.00 Set a blue line stone 24x12x4 ins, 18 ins
in the ground for 1/4 sec. cov. marked
1/4 on W. face, dig pits 18x18x12 ins. N.
and S. of stone 3 ft. dia, raise a mound
of earth 3 1/2 ft. low 1 1/2 ft. high W. of cov.
80.00 Set a blue line stone 20x7x6 ins, 15 ins
in the ground. for cov. of secs. 25, 30, 31
and 36. marked with 5 notches on N.
and 1 notch on S. edges, raise a
mound of stone 2 ft. low 1 1/2 ft. high
W. of cov. Pits impracticable

Land rolling and hilly
Soil sandy and stony 3rd and 4th rate
No timber

South Beh. secs 31 and 36.

Over rolling stony mesa land covered
with scattering sage brush and bunch
grass.

8.00 South edge of mesa base NW and SE.
desc. steeply

13.00 Foot descent 30 ft. below top of mesa
enter rolling land base NW and SE.

30.20 Top of Cliffs base NW and SE. desc.

40.00 over stony mountainous land, bears N.W. and S.E.
 The point for the 1/4 sec. cor. falls in the head of small ravine, where natural causes would ensure its destruction therefore at:

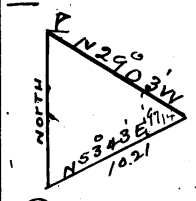
40.50 Set a sand stone 14x11x4 ins, 10 ins in the ground for witness cor. to the 1/4 sec. cor., marked W.C. 7 on W. face, and raise a mound of stone 2 ft. base, 1 1/2 ft. high. W. of cor. (Pit impracticable)
 This cor. is situated on S.W. slope of low ridge bears N.W. and S.W.

40.83 North rim of Canyon, the N. side of which is too steep to chain down. therefore to determine the distance to the bottom of the Canyon I proceed as follows
 Set a flag on line in bottom of Canyon, and leave a flag at my instrument station on the rim.

From the flag in the bottom of the Canyon I measure a base N 53° 43' E 10.21 chs dist from the end of which the flag on the rim of the Canyon bears N 29° 03' W, therefore the distance to the bottom of Canyon

$$= \log \sin 82^\circ 46' + \log 10.21 - \log \sin 29^\circ 03'$$

$$= \log 3.319302 = 20.86 \text{ chs.}$$
 which added to 40.83 chs. makes



61.69 Distance to flag in bottom of Canyon
 62.20 Brook 2 hrs. wide course S.W., descend abruptly over broken ridges and ravines

79.75 Top of sharp ridge bears N.E. and S.W., desc. S. slope over loose rocks

80.00 The point for the cor. of Tps. 30 and 31 N. R's 10 and 11 E. falls at foot of descent in bottom of dry ravine where natural causes would ensure its destruction, therefore at

80.20 Set a malapai stone 18x8x6 ins, 12 ins in the ground for witness cor. to the cor. of townships 30 and 31 N. R's 10 and 11 E., marked, W.C. T 31 N. on N.E. R 11 E. on S.E. T 30 N. on S.W. and R 10 E. on

Survey of the West boundary of Twp. 31 N. R. 11 E.
Col. Hunt

BOOK 2085

on N.W. face. with 6 notches on N.E. Sand
W edges. Rain a mound of stone
4 ft. face app. high S. of cor
Land rolling hilly and mountainous
Soil sandy and stony 3rd and 4th rate.
No timber.
Mountainous land 50.00 chs.
November 20th 1907

Survey of the South boundary of Tps. 31 N, R 11 E.

Chain

November 21st 1907. At 7^h 46^m a.m. laid
 off. $36^{\circ} 03' N$. on the lat. arc $19^{\circ} 42' S$.
 on the decl. arc. and determined a meridian
 with the solar alt. the cor. of Tps. 30 and 31
 N. R's 11 and 12 E.

Thence Drum

Went on a random line along the
 south boundary of Tps. 31 N. R 11 E. setting
 temp $\frac{1}{4}$ sec. and sec. cor. at intervals
 of 40.00 chs; and at 479.84 chs. intersect
 the west boundary of the Tps. 96 lbs. S. of the
 true point for cor. of Tps. 30 and 31 N. R's 10
 and 11 E., previously described.

The falling ansurs to a correction of $0^{\circ} 07'$
 or 16 lbs. per mile. Counting from the
 S.E. cor. of the Tps. Therefore Drum

$S 89^{\circ} 53' E$. from the true point for
 cor. of Tps. 30 and 31 N. R's 10 and 11 E., Beh.
 sec. 6 and 31. Ascend abrupt rocky,
 W. slope over mountainous land.

7.00 Top of ascent on rim of canyon 300 ft.
 above cor. bear N.E. and S.W. clear mountainous
 land bear N.E. and S.W. enter level mesa
 land.

30.00 near Mesa land bear N.E. and S.W. over low
 rolling sand hills

39.84 Set a blue lime stone $12 \times 12 \times 4$ ins. 8 ins
 in the ground for $\frac{1}{4}$ sec. cor. marked $\frac{1}{4}$
 on W. face, dig pits $18 \times 18 \times 12$ ins. E and W
 of stone 3 ft. dist. and raise a mound
 of earth $3\frac{1}{2}$ ft. base $1\frac{1}{2}$ ft. high N. of cor.

79.84 Set a lime stone $15 \times 6 \times 6$ ins. 10 ins. in
 the ground for cor. of sec. 5, 6, 31 and 32
 marked with 5 notches on E. and 1
 notch on W. edges, dig pits $18 \times 18 \times 12$ ins.
 in each sec $5\frac{1}{2}$ ft. dist. and raise a
 mound of earth 4 ft. base 2 ft. high. W
 of cor.

Land level hilly and mountainous
 Soil sandy and stony 3rd and 4th rate
 No timber

South boundary of T₁ 31 N. R 11 E
Belgium

Mountainous land 7.00 ch

S 89° 53' E. Bet. sec. 5 and 32
 Over low rolling sand hills. Covered with scattering greasewood and bunch grass
 40.00 Set a line stone 14x12x5 ins. 18 ins. in the ground for $\frac{1}{4}$ sec. cor. marked $\frac{1}{4}$ on N. face, dig pits 18x18x12 ins. E and W. of stone 3 ft. dist. and raise a mound of earth 3 $\frac{1}{2}$ ft. base, 1 $\frac{1}{2}$ ft. high N. of cor.
 80.00 Set a line stone 12x8x6 ins. 8 ins. in the ground for cor. of sec. 4 5 32 and 38 marked with 4 notches on E and 2 notches on W. edges, dig pits 18x18x12 ins. in each sec. 5 $\frac{1}{2}$ ft. dist. and raise a mound of earth 4 ft. base 2 ft. high W. of cor.
 Land rolling sand hills
 Soil sandy 3rd rate.
 No timber.

NOTE
 Nov 2.2nd Set off 20° 00' S on the decl. arc and at 11^h 46^{min} a.m. Sun. observed the sun on the meridian and obtain a reading on the lat. arc of 36° 08' N.

S 89° 53' E. Bet. sec 4 and 33
 Over low rolling sand hills covered with scattering sage and greasewood brush and bunch grass
 40.00 Set a line stone 14x6x6 ins. 10 ins. in the ground for $\frac{1}{4}$ sec. cor. marked $\frac{1}{4}$ on N. face, dig pits 18x18x12 ins E and W. of stone 3 ft. dist and raise a mound of earth 3 $\frac{1}{2}$ ft. base 1 $\frac{1}{2}$ ft. high N. of cor.
 80.00 Set a line stone 14x8x5 ins. 10 ins. in the ground for cor. of sec 3, 4, 33, and 34. marked with 3 notches on E. and W. edges. dig pits 18x18x12 ins in each sec. 5 $\frac{1}{2}$ ft. dist and raise a mound of earth 4 ft. base 2 ft. high W. of cor.
 Land hilly.
 Soil sandy 3rd rate.

No timber.

S 89° 53' E. Beh. sec. 3 and 34

Over low rolling sand hills covered with sage and
greasewood brush and bunch grass

40.00 Set a lime stone 12 x 8 x 5 ins, 8 ins. in the
ground. for $\frac{1}{4}$ sec. cor. marked $\frac{1}{4}$ on N. face
dig pits 18 x 18 x 12 ins E and W. of stone 3 ft dist
and raise a mound of earth 3 $\frac{1}{2}$ ft. base 1 $\frac{1}{2}$ ft.
high N. of cor.

60.00 Over rolling sand hills. from N.E. and S.W.
ascend W. slope mesa.

80.00 Set a lime stone 14 x 8 x 5 ins, 10 ins. in the
ground. for cor. of sec. 2, 3, 34 and 35 -
marked with two notches on E and 4
notches on W. edges, dig pits 18 x 18 x 12
ins. in each sec. 5 $\frac{1}{2}$ ft. dist. and raise
a mound of earth 4 ft. base. 2 ft. high
W. of cor.

Land hilly
Soil sandy 3rd and 4th rate
No timber

S 89° 53' E. Beh. sec. 2 and 35.

Ascend W. slope mesa over hilly land covered
with scattering greasewood and sage brush

6.50 Top mesa to N.E. and S.W. thence over
rolling sandy land along top of mesa.

18.00 Dig ravine 1 ch. wide course S.W.

40.00 Set a lime stone 16 x 5 x 5 ins. 12 ins. in
the ground for $\frac{1}{4}$ sec. cor. marked $\frac{1}{4}$ on
N. face, dig pits 18 x 18 x 12 ins. E and W.
of stone 3 ft. dist. and raise a mound
of earth 3 $\frac{1}{2}$ ft. base, 1 $\frac{1}{2}$ ft. high, N. of cor.

80.00 Set a lime stone 17 x 8 x 4 ins. 12 ins. in
the ground, for cor. of sec. 1, 2, 35 and 36
marked with 1 notch on E and 5 notches
on W. edges, dig pits 18 x 18 x 12 ins. in
each sec. 5 $\frac{1}{2}$ ft. dist. and raise a mound
of earth 4 ft. base, 2 ft. high W. of cor.

South boundary of Twp. 31 N. R. 11 E
Chain

Land rolling and hilly
Soil sandy 3rd rate
No timber

S 89° 53' E. Bet. posts 1 and 36.

Over rolling sandy land along top of mesa. Covered with scattering sage and greasewood bush and bunch grass

7.00 East edge of mesa bears NW. and S.E. desc. N.E. slope over hilly land
20.25 Dry ravine 25 lbs. wide 10 ft deep on foot of steep descend - Course N.E.

40.00 Set a line stone 16x12x6 ins. 10 ins. in the ground for 1/4 sec. cor marked 1/4 on N. face, dig pit 18x18x12 ins. End W. of stone 3 ft. dist. and raise a mound of earth 3 1/2 ft. base 1/2 ft. high N. of cor.

46.63 Dry gulch 10 lbs wide Course N.E., bear hilly land bears NW. and S.E., enter rolling bottom land bears NW. and S.E.

80.00 Intersect the cor of Twp. 30 and 31 N. R's 11 and 12 E.

Land rolling and hilly
Soil sandy 3rd rate
No timber

November 22nd 1907

Boundaries of Twp 310N, R11E.
 Latitudes Departures and Closing errors.

Line Designated	True bearing	Distance	Latitudes		Departures	
			N	S	E	W
		CHS	CHS	CHS	CHS	CHS
S. Bdry T310N, R11E.	N 89° 53' W	479.84	00.96			479.84
W. Bdry T310N, R11E	North	480.00	480.00			
N. Bdry T310N, R11E	S 89° 56' E	38.48		00.05	38.48	
Beh. Acs 6 and 31	S 89° 55' E	40.00		00.06	40.00	
Beh. Seed 5 and 32	EAST	39.92			39.92	
	S 89° 52' E	40.00		00.09	40.00	
Beh. Seed 4 and 33	S 89° 55' E	40.24		00.06	40.24	
	EAST	40.26			40.26	
Beh. Seed 3 and 34	N 89° 48' E	40.00	00.14		40.00	
	S 89° 35' E	39.78		00.29	39.78	
Beh. Seed 2 and 35	N 89° 41' E	40.00	00.23		40.00	
	S 89° 51' E	39.98		00.11	39.98	
Beh. Seed 1 and 36	N 89° 56' E	80.08	00.10		80.08	
E. Bdry T310N, R11E.	South	480.00		480.00		
Convergence					51	
Totals			481.43	480.66	479.34	479.84
			480.66		.25	479.34
Error in Lat			0.77	Error in Dep		0.50

FINAL OATHS OF DEPUTY SURVEYOR AND HIS ASSISTANTS.

(14)

LIST OF NAMES.

A list of the names of the individuals employed by Sidney E. Blount
Commissary of Surveys, United States Deputy Surveyor, to assist in running, measuring, and
marking the lines and corners described in the foregoing field notes of the survey of the East, West
and South Boundaries of Twp. 31 N., R. 11 E.

showing the respective capacities in which they acted:

- J. L. Warner Commissary
....., Chairman.
- A. D. Kline
....., Chairman.
- Norman Olliver
....., Moundman.
-
....., Moundman.
-
....., Axman.
-
....., Axman.
- H. L. May
....., Flagman.

FINAL OATH OF ASSISTANTS.

We hereby certify that we assisted Sidney E. Blount
Commissary of Surveys, United States Deputy Surveyor, in surveying all
those parts or portions of the East, West, and South Boundaries of
Township No. 31 North of Range No. 11 E.

..... of the Gila and
Salt River Base and meridian, in the Territory of Arizona, which are represented
in the foregoing field notes as having been surveyed by him and under his direction; and that said survey
has been in all respects, to the best of our knowledge and belief, well and faithfully surveyed, and the
corner monuments established, according to the instructions furnished by the United States Surveyor
General for

- J. L. Warner ✓ Commissary
....., Chairman.
- J. L. Warner ✓
....., Chairman.
- Norman Olliver ✓
....., Moundman.
-
....., Moundman.
-
....., Axman.
-
....., Axman.
- H. L. May ✓
....., Flagman.

Subscribed and sworn to before me this }
day of, 190



FINAL OATH OF UNITED STATES DEPUTY SURVEYOR.

I, Sidney E. Blout, ^{Examiner of Surveys} United States Deputy Surveyor, do solemnly swear that, in pursuance of ^{instructions} a contract received from The Commissioner of the General Land Office, bearing date of the 2 day of Oct, 1907, I have well, faithfully, and truly, in my own proper person, and in strict conformity with the instructions furnished by the United States Surveyor General for _____, the Manual of Surveying Instructions, and the laws of the United States, surveyed all those parts or portions of the East, West and West boundaries of Twp. 31 N., R. 11 E. of the Gila and Salt River Basins and _____ of the _____ meridian, in the Territory of Arizona, which are represented in the foregoing field notes as having been surveyed by me, and under my direction; and I do further solemnly swear that all the corners of said survey have been established and perpetuated in strict accordance with the Manual of Surveying Instructions, and the special written instructions of the ^{Commissioner of the} United States Surveyor General for General Land Office and in the specific manner described in the field notes, and that the foregoing are the original field notes of such survey.

Sidney E. Blout
United States Deputy Surveyor.
^{Examiner of Surveys}

Subscribed by said _____, and sworn to before me }
this _____ day of _____, 190 _____



APPROVAL.

OFFICE OF THE UNITED STATES SURVEYOR GENERAL,

The foregoing field notes of the survey of Phoenix, Arizona Nov. 27, 1908
the East West and South
boundaries of Township No. 31 North Range No. 11 East of the
city and Salt River Basin and Meridian in the
Territory of Arizona.

executed by Sidney E. Blout ^{Examiner of Surveys}
under his contract No. Quito, dated October 2nd, 1907, having been critically examined, and the necessary corrections and explanations made, the said field notes, and the surveys they describe, are hereby approved.

Joseph D. Ingalls
United States Surveyor General.

I certify that the foregoing transcript of the field notes of the above-described surveys in _____, has been correctly copied from the original notes on file in this office.

United States Surveyor General.