

Book "E" 4-679.

Ordered filed June 8-1910
Accepted April 2-1907

34

(1)

2132

BOOK 2132

FIELD NOTES

OF THE SURVEY OF THE

2132

2132

Subdivisional and Meander lines

T 1.7 N. R 21 W and Meander lines

Spears Lake

2132

Of the Gila & Salt River Meridian,
Arizona.

AS SURVEYED BY

John J. Fisher, United States Deputy Surveyor,

Under his Contract No. 128, dated March 14th, 1905

Survey commenced October 9th, 1905

Survey completed November 15th, 1905

6-151

2132

2132

2132

Comes check
can plot maps

Henry R. O'Connor Summer

Geo W Cassidy Summer

Henry R O'Connor Woundman

Geo W Cassidy Woundman

J. J. Murphy Axman

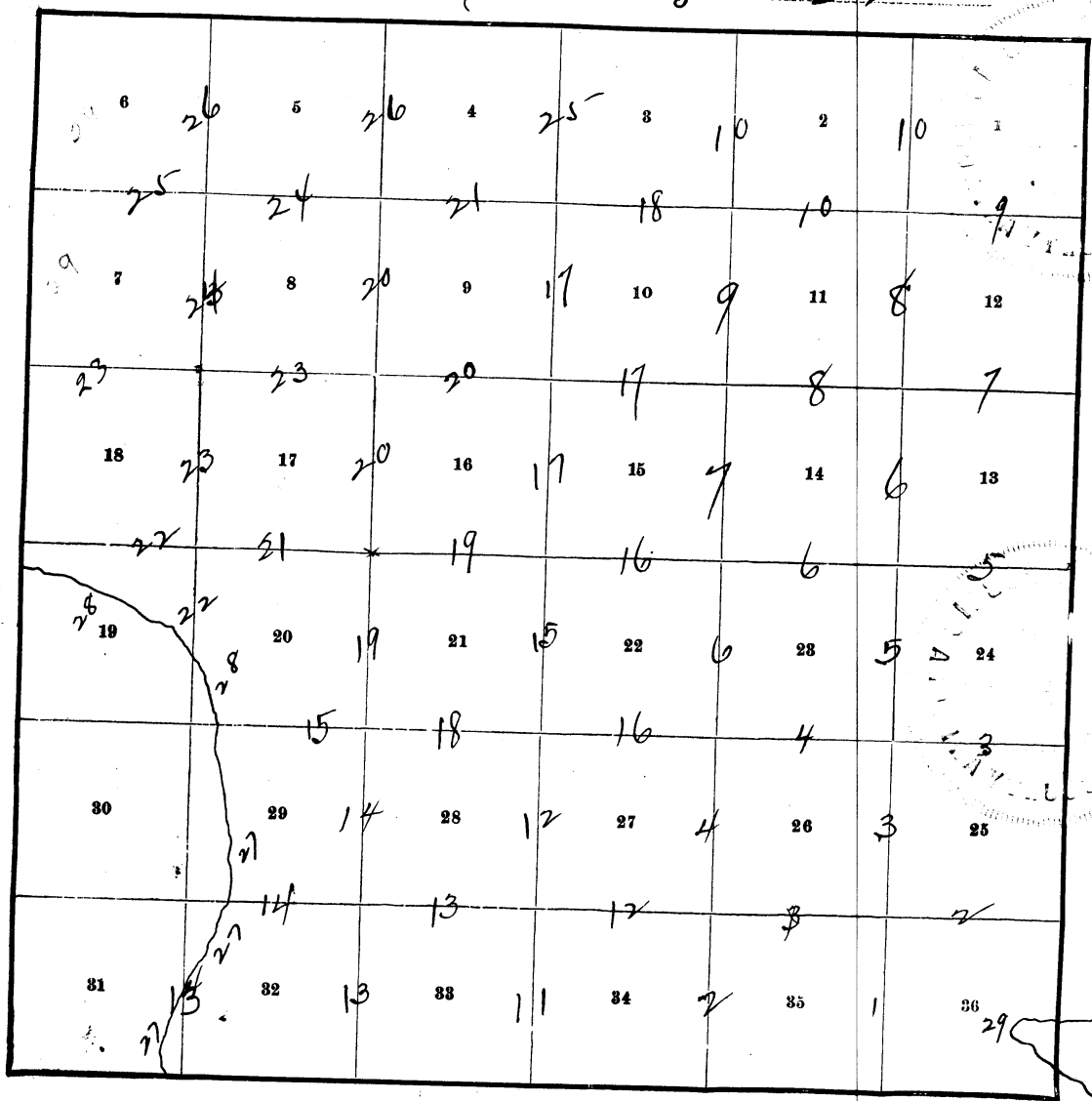
J.W. Ricketts Axman

Irvine & Ayer Flyman

BOOK 2132

INDEX DIAGRAM. 2132

Township 17 N., Range 21 W.



Meanders Page 27-28-29


37
10
BOOK 2132

PRELIMINARY OATHS OF ASSISTANTS.

WE, Henry R Connor and Geo. W Cassidy
do solemnly swear that we will well and faithfully execute the duties of chainmen; that we will level the chain upon even and uneven ground, and plumb the tally pins, either by sticking or dropping the same; that we will report the true distances to all notable objects, and the true lengths of all lines that we assist in measuring, to the best of our skill and ability, and in accordance with instructions given us, in the survey of Subs. & Meanders T17N R21W and Meander Spear's Lake

Henry R Connor, Chairman.
Geo. W Cassidy, Chairman.

Subscribed and sworn to before me this 4th
day of October, 1905


 My commission expires
May 19, 1908

J. J. Fisher
Notary Public

WE, Henry R Connor and Geo. W Cassidy
do solemnly swear that we will well and truly perform the duties of moundmen in the establishment of corners, according to the instructions given us, to the best of our skill and ability, in the survey of Subs. & Meanders T17N R21W and Meander Spear's Lake

Henry R Connor, Moundman.
Geo. W Cassidy, Moundman.

Subscribed and sworn to before me this 4th
day of October, 1905


 My commission expires
May 19, 1908

J. J. Fisher

WE, J. J. Murphy and J. W. Ricketts
do solemnly swear that we will well and truly perform the duties of axmen in the establishment of corners and other duties, according to instructions given us, to the best of our skill and ability, in the survey of Subs. & Meanders T17N R21W and Meander Spear's Lake

J. J. Murphy, Axman.
J. W. Ricketts, Axman.

Subscribed and sworn to before me this 4th
day of October, 1905


 My commission expires
May 19, 1908

J. J. Fisher
Notary Public

I, Irving V. Anger, do solemnly swear that I will well and truly perform the duties of flagman according to instructions given me, to the best of my skill and ability, in the survey of Subs & Meanders T17N R21W and Meander Spear's Lake

Irving V. Anger, Flagman.

Subscribed and sworn to before me this 4th
day of October, 1905

 My commission expires
May 19, 1908

J. J. Fisher
Notary Public.

Chains

Survey commenced October 9, 1905 and executed with a W. & L. E. Gurley Light Mountain Transit, not numbered, with Smith solar attachment; the horizontal limb is provided with two double verniers placed opposite to each other, these reading to single minutes of arc which is also the least count of the verniers of the latitude and declination arc. The instrument was examined, tested on the true meridian at Phoenix, found correct and was approved by the Surveyor General of Arizona on September 25, 1905.

I examined the adjustments of the transit, correct the level and collimation errors, then to test the solar apparatus by comparing its indication resulting from solar observations made during a.m. and p.m. hours with the true meridian determined by observations on Polaris, I proceed as follows:-

October 9. At the Standard cor. of Tps. 17 North, Ranges 20 and 21 West, lat. $34^{\circ} 44' 31.2''$ N., long. $114^{\circ} 24' 25''$ W., at 10h. a.m. l.m.t. I set off $34^{\circ} 45' N.$ on the lat. arc and $6^{\circ} 11' S.$ on the decl. arc and determined a true meridian with the solar and mark a point thereof on a stone 5 chs. N. of cor. which I set May 4, 1905 which falls 0.3 ins. W. of the true meridian established by Polaris observation on May 5, 1905.

At 2h. p.m. l.m.t. I set off $34^{\circ} 45' N.$ on the lat. arc and $6^{\circ} 14' S.$ on the decl. arc and determine a true meridian with the solar and mark a point thereof on the stone set May 4, 1905, which falls 0.25 ins. E. of the true meridian established by Polaris observation on May 5, 1905,

The solar apparatus by p.m. and a.m. observation defines position of true meridians respectively about $0' 21''$ W. and $0' 16''$ E. of the meridian established by Polaris observation, therefore I conclude that the adjustments of the instrument are satisfactory.

The magnetic bearing of the said true meridian is $N. 15^{\circ} 5' W.$ which gives the mag. decl. $15^{\circ} 5' E.$

Beginning at the standard cor. of Secs. 35 and 36, T. 17 N., R. 21 W.,

I run

$N. 0^{\circ} 1' W.$ between Secs. 35 and 36 over rolling broken mountainous country,

Ascend,

25.00 Summit of ridge, course NE. and SW.

Descend,

40.00 Set a lava stone $24 \times 8 \times 6$ ins. 18 ins. in ground for $1/4$ sec. cor. marked $1/4$ on W. face, raised a mound of stones 2 ft. base, 1.5 ft. high W. of cor.

No trees, pits impracticable.

58.00 Cross canon 2 chs. wide, course SW.

Ascend,

80.00 Set a lava stone $24 \times 8 \times 8$ ins. 18 ins. in ground for cor. Secs. 25, 26, 35, 36, marked 1 groove on E. and S. faces, raised a mound of stones 2 ft. base 1.5 ft. high W. of cor.

No trees, pits impracticable,

Soil rocky, fourth rate,

Land rolling mountainous,

Mountainous land 80.00 chs. ✓

Thence I run

East on a random line between Secs. 25 and 36 over rolling broken mountainous country,

40.00 Set temporary $1/4$ Sec. cor.

80.04 Intersect Range line at 3 lks. N. of cor. Secs. 25, 30, 31, 36, Thence I run,

Chains	
	N.89°59'W. on a true line between Secs.25 and 36, Descend,
30.00	Cross canon 20 lks.wide, course SW. Ascend,
34.00	Cross ridge, course SW. and NE. Descend
38.25	Cross canon 20 lks.wide, course SW. Ascend,
40.02	Set a lava stone, 18x8x8 ins. 12 ins.in ground for 1/4 Sec.cor. marked 1/4 on N.face, raised a mouns of stones 2 ft.base, 1.5 ft.high N.of cor. No trees, pits impracticable.
48.00	Cross ridge, course NE. and SW. Descend,
58.50	Cross canon, 75 lks.wide, course SW. Ascend,
68.00	Cross ridge, course NE. and SW. Descend,
78.50	Cross canon 25 lks.wide, course SW. Ascend,
80.04	The cor.Secs. 25,26,35,36. Soil, rocky, lava formation, fourth rate, Land rolling mountaineous, cut up by canons. Mountaineous land 80.04 chs. October 9, 1905.

	October 10, 1905. At 7h. 30m.a.m.l.m.t. I set off 34°45'N.on the lat.arc and 6°30'S.on the decl.arc and determined a true meridian with the solar at the standard cor.of Secs.34 and 35, Thence I run, N.0°1'W. between Secs. 34 and 35 over rough broken mountaineous country, Ascend,
4.50	Top of ridge, course E. and W. Descend,
24.50	Cross canon, 30 lks.wide, course E. and W. Ascend,
34.50	N. rim of canon, <i>and ascend</i>
40.00	Top of ridge, course E. and W., set a lava stone 18x12x 10 ins. 12 ins.in ground for 1/4 Sec.cor.marked 1/4 on W. face, raised mound of stones 2 ft.base, 1.5 ft. high W. of cor. No trees, pits impracticable. Descend,
44.11	Cross gulch 30 lks.wide, course NW. Ascend,
47.00	Cross ridge, course E. and W., Descend,
49.80	Cross canon, 75 lks.wide, course W. Ascend,
53.00	Cross ridge, course E. and W. Descend,
56.24	Cross canon, 100 lks.wide, course W. Ascend,
57.00	Summit of ridge, course E. and W. Descend,
58.00	Cross gulch 75 lks.wide, course W. Ascend,
65.00	Cross summit of ridge, course NE. and SW. Descend,
75.00	Cross gulch, 40 lks.wide, course SW. Ascend,
80.00	Set a lava stone 20x12x10 ins. ¹⁵ 14 ins.in ground for cor.Secs.26,27,34,35, marked 2 grooves on E. and 1 groove on S. edges, raised a mound of stones 2 ft. base, 1.5 ft.high W. of cor. No trees, pits impracticable, Soil gravelly and rocky, fourth rate, Land rolling mountaineous, cut up by canons and deep gulches, Mountaineous land 80.00 chs.

Subdivisions of T. 17 N., R. 21 W., continued.

chains

Thence I run,
East on a random line between Secs. 26 and 35 over rolling mountainous country,
40.00 Set temporary 1/4 Sec. cor.
80.00 Intersect sec. line at 9 lks. N. of cor. Secs. 25, 26, 35, 36,
Thence I run
N. 89° 56' W. on a true line between Secs. 26 and 35,
Ascend,
20.00 Cross summit of ridge, course NE. and SW.
Descend,
38.00 Cross canon, 20 lks. wide, course SW.
Ascend,
40.00 Set a lava stone 24x12x8 ins. 18 ins. in ground for 1/4 Sec. cor. marked 1/4 on N. face, raised mound of stones 2 ft. base, 1.5 ft. high N. of cor.
No trees, pits impracticable.
60.00 Cross summit of ridge, course NE. and SW.
Descend,
80.00 The cor. Secs. 26, 27, 34, 35,
Soil rocky, fourth rate,
Land mountainous, cut up by deep canons.
Mountainous land 80.00 chs.

At 12h.m.l.m.t. I set off 6° 36' S. on the decl. arc and observed the sun on the meridian at the cor. Secs. 25, 26, 35, 36, the resulting lat. is 34° 45' N.

Thence I run,
N. 9° 1' W. over ~~level~~ mesa country, gently descending to N. *bet. sec 25 & 26*
40.00 Set a lava stone 24x10x8 ins. 18 ins. in ground for 1/4 sec. cor. marked 1/4 on W. face and raised mound of stones 2 ft. base, 1.5 ft. high W. of cor.
No trees, pits impracticable.
Leave mesa, enter rough broken country, descend.
40.75 Cross canon 20 lks. wide, course W.
Ascend,
47.00 Cross summit of ridge, course E. and W.
Descend,
53.00 Cross canon 30 lks. wide, course ~~NE.~~ and SW.
Ascend,
63.00 Cross summit of ridge, course E. and W.
Descend,
75.50 Cross canon 50 lks. wide, course SW.
Ascend,
80.00 Cor. Secs. 23, 24, 25, 26, set lava stone 20x12x10 ins. 15 ins. in ground, marked 2 grooves on S. and 1 groove on E. faces, raised mound of stones 2 ft. base 1.5 ft. high W. of cor.
No trees, pits impracticable.
Soil gravelly and rocky, second and fourth rates,
Land mountainous and level,
Mountainous land 40.00 chs.

Thence I run,
S. 89° 59' E. on a random line between Secs. 24 and 25
40.00 Set temporary 1/4 Sec. cor.
80.09 Intersect Range line at 8 lks. N. of cor. Secs. 19, 24, 25, 30,
Thence I run,
N. 89° 56' W. on a true line between Secs. 24 and 25 over rough broken mountainous country,
Descend,
5.00 Cross gulch 50 lks. wide, course S.
Ascend,
7.25 Cross summit of ridge, course N. and S.
Descend,
9.50 Cross gulch 30 lks. wide, course S.
Ascend,
12.00 Cross summit of ridge, course N. and S.

Chains	
14.50	Descend, Cross gulch 50 lks.wide, course S.
40.045	Ascend, Top of ridge, course NE. and SW.
	Set a lava stone 24x10x6 ins. 18 ins.in ground for 1/4 Sec.cor, marked 1/4 on N.face, raised mound of stones 2 ft.base, 1.5 ft.high N.of cor.
	No trees, pits impracticable.
68.50	Descend, Cross cañon 50 lks.wide, course SW.
80.09	Ascend, The cor.Secs.23,24,25,26,
	Soil rocky, lava formation, fourth rate,
	Land mountaineous, cut up by deep gulches and canons.
	Mountaineous land 80.09 chs.
	October 10, 1905.

	October 11, 1905. At 7h.30m.a.m.1.m.t. I set off 34°
	45'N. on the lat.arc and 6°53'S.on the decl.arc and
	determine a true meridian with the solar at the cor.
	Secs. 26,27,34,35,
	Thence I run,
	N.0°1'W. between Secs. 26 and 27,over rolling moun-
	taineous country,
18.00	Ascend, Cross summit of ridge, course NE. and SW.
38.82	Descend, Cross cañon, 150 lks.wide, course W., ascend.
40.00	Set a lava stone 18x12x8 ins. 12 ins.in ground for 1/4
	Sec.cor. marked 1/4 on W.face, raised a mound of
	stone 2 ft.base, 1.5 ft.high W.of cor.
	Whence a Palo Verde 6 ins.diam.bears. S.76°45'E. 39 lks.
	dist.marked 1/4 S:26 B.T.
	No other trees available, pits impracticable.
44.00	Ascend, Cross summit of ridge, course E. and W.
47.86	Descend, Cross gulch 20 lks.wide, course SE.
64.00	Ascend, Cross summit of ridge, course E. and W.
71.00	Descend, Enter cañon, course SW.
76.00	Leave cañon, course SW.
80.00	Ascend, Set a lava stone 30x15x8 ins. ²³ 24 ins.in ground, for cor.
	Secs.22,23,26,27, stone marked 2 grooves on S. and E.
	faces, raised a mound of stones 2 ft.base 1.5 ft.
	high W.of cor.
	No trees, pits impracticable,
	Soil rocky, lava formation, fourth rate,
	Land rough, broken mountaineous.
	Mountaineous land 80.00 chs.

40.00	Thence I run, S.89°56'E. on a random line between Secs.23 and 26,
79.95	Set temporary 1/4 Sec.cor. Intersect Sec.line at N.9 lks.from cor Secs.23,24,25,26,
	Thence I run, N.89°52'W. on a true line between Secs.23 and 26,
20.00	Ascend, Summit of ridge, course NE. and SW.
39.50	Descend, Intersect S.rim of cañon, course E. and W.
39.975	Set a lava stone 22x18x12 ins. 18 ins.in ground for 1/4
	Sec.cor. marked 1/4 on N.face, raised mound of stones
	2 ft.base, 1.5 ft.high N.of cor.
	No trees, pits impracticable,

Subdivisions of T. 17 N., R. 21 W., continued.

Chains

- 48.00 Cross bottom of canon, 50 lks.wide, course SW.
Ascend,
- 60.00 Cross N.rim of canon, course SW.
- 70.00 Cross summit of ridge, course NE. and SW.
Descend,
- 79.95 Cor.Secs.22,23,26,27,
Soil rocky, lava formation, fourth rate,
Land rough broken mountaineous,
Mountaineous land 79.95 chs.

At 12h.m.1.m.t. I set off 6°58'S.on the decl.arc and
observed the sun on the meridian at the cor.Secs.
23,24,25,26, the resulting lat.is 34°46'N.
Thence I run,
N.0°1'W.between Secs.23 and 24 over rough broken moun-
taineous country,

- 7.00 Ascend,
Cross summit of ridge, course E.and W.,
Descend,
- 17.50 Cross canon, 30 lks.wide, course W.
Ascend,
- 20.00 Cross summit of ridge, course E. and W.
Descend,
- 24.25 Cross gulch 30 lks.wide, course W.
Ascend,
- 34.00 Cross summit of ridge, course NE. and SW.
Descend,
- 40.00 Set a lava stone 24x10x10 ins. 18 ins.in ground for 1/4
Sec.cor.stone marked 1/4 on W.face, raised mound of
stone 2 ft.base, 1.5 ft.high W.of cor.
No trees, pits impracticable.
- 45.75 Cross gulch 20 lks.wide, course SW.
Ascend,
- 52.00 Cross summit of ridge, course NE. and SW.
Descend,
- 57.00 Enter canon,
- 65.00 Cross bed of canon 50 lks.wide, course SW.
Ascend,
- 73.00 Leave canon, *ascend*
- 80.00 Set a lava stone 20x12x8 ins. ¹⁵~~16~~ ins.in ground for cor.
Secs. 13,14,23,24, stone marked 3 grooves on S and 1
groove on E. faces, raised mound of stone 2 ft.high
1.5 ft.high W. of cor.
No trees, pits impracticable,
Soil rocky, lava formation, fourth rate,
Land rolling mountaineous,
Mountaineous land 80.00 chs.

-
- Thence I run,
S.89°56'E. on a random line between Secs. 13 and 24,
over rolling mountaineous country,
- 40.00 Set temporary 1/4 Sec.cor,
 - 80.00 Intersect Range line at S.19 lks.from cor.Secs.13,18,19,
24,
Thence I run,
S.89°56'W. on a true line between Secs. 13 and 24,
Ascend,
 - 20.00 Top of ridge, course NE. and SW.
Descend,
 - 40.00 Set a lava stone 24x10x6 ins. 18 ins.in ground for 1/4
Sec.cor.marked 1/4 on N.face, raised mound of stones
2 ft.base, 1.5 ft.high N.of cor.
No trees, pits impracticable,
 - 41.00 Enter canon,
 - 44.00 Cross bed of canon 50 lks.wide, course SW.
Ascend,

43

Chains

47.00
80.00

Leave canon,
Cor.Secs.13,14,23,24,
Soil rocky, lava formation, fourth rate,
Land rolling mountaineous,
Mountaineous land 80.00 chs.

October 11, 1905.

October 12, 1905. At 7h.30m.a.m.l.m.t. I set off
34°46'N.on the lat.arc and 79°15'S.on the decl.arc
and determine a true meridian with the solar at the
cor.Secs.22,23,26,27,

Thence I run,
N.0°1'W. between Secs.22 and 23, over rolling moun-
taineous country,

5.20

Descend,
Cross canon, 100 lks.wide, course SW.,
Ascend,

40.00

Set a lava stone 24x10x4 ins.18 ins.in ground for 1/4
Sec.cor. marked 1/4 on W.face and raised a mound of
stones 2 ft.base 1.5 ft.high W.of cor.

41.00

No trees, pits impracticable,
Cross summit of ridge, course NE. and SW.
Descend,

54.00

Enter canon,

57.00

Cross bed of canon, 50 lks.wide, course W.
Ascend,

60.00

Leave canon, *ascend*

80.00

~~Summit of ridge, course NE. and SW.,~~ set a lava stone
24x10x8 ins. 18 ins.in ground for cor.Secs.14,15,22,
23, marked 3 grooves on S. and 2 grooves on E.faces,
raised mound of stones 2 ft.base, 1.5 ft.high W.of
cor.

No trees, pits impracticable.
Soil, rocky lava formation, fourth rate,
Land rolling mountaineous,
Mountaineous land 80.00 chs.

Thence I run,
S.89°52'E.on a random line between Secs.14 and 23,
Set temporary 1/4 Sec.cor.

40.00

79.82

Intersect Sec.line at S.4 lks.from cor.Secs.13,14,23,24,
Thence I run,

N.89°54'W. on a true line between Secs.14 and 23,
over rolling mountaineous country,

33.00

Descend,
Cross canon 100 lks.wide, course SW.
Ascend,

39.91

Set a lava stone 24x15x15 ins. 18 ins.in ground for 1/4
Sec.cor. marked 1/4 on N.face, raised a mound of stone
2 ft.base, 1.5 ft.high N.of cor.

79.82

No trees, pits impracticable,
Top of ridge, course NE. and SW., the cor.Secs.14, 15
22,23,

Soil rocky, lava formation, fourth rate,
Land rolling mountaineous,
Mountaineous land 79.82 chs.

11h.47m
At 12h.m.l.m.t. I set off 7°21'S.on the decl.arc and
observed the sun on the meridian at the cor.Secs.13,
14,23,24, the resulting lat.is 34°47'N.✓

10.00

Thence I run,
N.0°1'W. over rough mountaineous country, between
Secs.13 and 14,
Ascend,
Summit of ridge, course NE. and SW.
Descend,

Subdivisions of T. 17 N., R. 21 W., continued.

Chains	
20.75	Cross canon, 50 lks.wide, course SW. Ascend,
40.00	Summit of ridge, ^{1/2} course NE. and SW., set a lava stone 18x10x8 ins. 14 ins.in ground for 1/4 Sec.cor. marked 1/4 on W.face, raised mound of stones 2 ft.base, 1.5 ft.high W.of cor. No trees, pits impracticable. Descend,
53.50	Cross gulch 50 lks.wide, course SW. Ascend,
80.00	Summit of ridge, course NE. and SW., set a lava stone 20x12x10 ins. 15 ins.in ground for cor.Secs.11,12,13, 14, marked 4 grooves on S. and 1 groove on E.faces, raised a mound of stones 2 ft.base, 1.5 ft.high W. of cor. No trees, pits impracticable, Soil rocky, lava formation, fourth rate, Land rolling mountaineous, Mountaineous land 80.00 chs.

40.00	Thence I run, N.89°56'E. on a random line between Secs.12 and 13, Set temporary 1/4 Sec.cor.
80.14	Intersect Range line at N.28 lks.from cor.Secs.7,12, 13,18, Thence I run, N.89°52'W.on a true line between Secs.12 and 13 over rough broken mountaineous country, Descend,
1.50	Cross gulch 75 lks.wide, course SW. Ascend,
15.00	Cross summit of ridge, course NE. and SW. Descend,
20.75	Cross canon 50 lks.wide, course SW. Ascend,
39.00	Cross summit of ridge, course NE. and SW. Descend,
40.07	Set a lava stone 18x12x12 ins. 14 ins.in ground for 1/4 Sec.cor. marked 1/4 on N. face, raised a mound of stones 2 ft.base, 1.5 ft.high N.of cor. No trees, pits impracticable,
48.25	Cross canon 250 lks.wide, course SW., Ascend,
60.00	Cross summit of ridge, course NE. and SW. Descend,
69.75	Cross gulch 75 lks.wide, course SW. Ascend,
80.14	The cor.Secs.11,12,13,14, Soil gravelly, third rate, Land rolling mountaineous, Mountaineous land 80.14 chs.
October 12, 1905.	

	October 13, 1905. At 7h.30m.a.m.l.m.t. I set off 34° 47'N.on the lat.arc and 7°37' ²³ S.on the decl.arc and determine a true meridian with the solar at cor.Secs. 14,15,22,23, Thence I run, N.0°1'W. between Secs.14 and 15 over rolling moun- taineous country, Ascend,
15.00	Summit of ridge, course NE. and SW. Descend,
33.25	Cross canon, 150 lks.wide, course W. Ascend,
40.00	Set a lava stone 30x20x18 ins. 24 ²³ ins.in ground for 1/4 Sec.cor. marked 1/4 on W.face, raised mound of stones

Chains	
	2 ft. base, 1.5 ft. high W. of cor. No trees, pits impracticable. Descend,
41.75	Cross gulch 30 lks. wide, course W. Ascend,
46.00	Cross summit of ridge, course E. and W., Descend,
53.00	Cross gulch 20 lks. wide, course W. Ascend,
57.00	Cross summit of ridge, course E. and W. Descend,
62.00	Enter canon,
65.00	Cross bed of canon, 50 lks. wide, course SW. Ascend,
69.00	Leave canon,
80.00	Set a lava stone 18x10x10 ins. ¹² ins. in ground for cor. Secs. 10, 11, 14, 15 marked 4 grooves on S. and 2 grooves on E. faces, raised a mound of stones 2 ft. base, 1.5 ft. high W. of cor. No trees, pits impracticable, Soil rocky, lava formation, fourth rate, Land rough, rolling mountaineous, Mountaineous land 80.00 chs.

	Thence I run, S. 89° 54' E. on a random line between Secs. 11 and 14, 40.00 Set temporary 1/4 sec. cor.
79.86	Intersect Sec. line at S. 4 lks. from cor. Secs. 11, 12, 13, 14, Thence I run, N. 89° 56' W. on a true line between Secs. 11 and 14, over rolling mountaineous country, Descend,
12.00	Cross canon, 50 lks. wide, course SW., Ascend,
23.00	Cross summit of ridge, course NE. and SW. Descend,
34.00	Cross dry creek 20 lks. wide, course SW. Ascend,
39.93	Set a lava stone 20x12x4 ins. ¹⁵ ins. in ground for 1/4 Sec. cor. marked 1/4 on N. face, raised mound of stones 2 ft. base, 1.5 ft. high N. of cor.
79.86	No trees, pits impracticable, cor. Secs. 10, 11, 14, 15, Soil rocky, lava formation, fourth rate, Land rolling mountaineous, Mountaineous land 79.86 chs.

	October 14, 1905. At 7h. 30m. a.m. l.m.t. I set off 34° 48' N. on the lat. arc and 89° 0' S. on the decl. arc and determine a true meridian with the solar at the cor. Secs. 11, 12, 13, 14, Thence I run N. 0° 1' W. between Secs. 11 and 12, Descend,
2.00	Enter canon, course SW.
10.00	Cross dry creek in bed canon, 50 lks. wide, course SW. Ascend,
14.00	Leave canon, <i>ascend</i>
40.00	Set a lava stone 20x12x12 ins. ¹⁵ ins. in ground for 1/4 sec. cor. marked 1/4 on W. face, raised mound of stones 2 ft. base, 1.5 ft. high W. of cor.
52.00	No trees, pits impracticable, Cross summit of ridge, course SW. Descend,
63.25	Enter canon, course SW.
71.00	Cross dry bed of canon, course SW. 50 lks. wide.

Subdivisions of T. 17 N., R. 21 W., continued.

Chains

79.00 Ascend,
 Leave canon, *ascend*
 80.00 Set a lava stone 24x15x10 ins. 18 ins. in ground for Cor.
 Secs. 1,2,11,12, stone marked 5 grooves on S. and 1
 groove on E. edges, raised mound of stones 2 ft.
 base, 1.5 ft. high W. of cor.
 No trees, pits impracticable,
 Soil rocky and gravelly, third and fourth rates,
 Land rolling mountaineous,
 Mountaineous land, 80.00 chs.

 Thence I run,
 S. 89°52'E. on a random line between Secs. 1 and 12
 40.00 Set temporary 1/4 Sec. cor.
 80.00 Intersect Range line at cor. Secs. 1,6,7,12,
 Thence I run

N. 89°52'W. on a true line between Secs. 1 and 12,
 Descend,

0.50 Enter canon, course SW.
 7.00 Cross dry bed of canon, 50 lks. wide, course SW.

Ascend,
 14.00 Leave canon, *ascend*
 40.00 Set a lava stone 18x12x7 ins. ¹²14 ins. in ground for 1/4
 Sec. cor. stone marked 1/4 on N. face, raised mound of
 stones 2 ft. base, 1.5 ft. high N. of cor.

No trees, pits impracticable.
 Descend,
 66.00 Enter canon, course SW.
 72.00 Cross dry bed of canon, 50 lks. wide, course SW.

Ascend,
 79.00 Leave canon, *ascend*
 80.00 Cor. Secs. 1,2,11,12,
 Soil, rocky, lava formation, fourth rate,
 Land rolling mountaineous,
 Mountaineous land 80.00 chs.

October 14, 1905.

 October 16, 1905.

At 8h.a.m. l.m.t. I set off 34°48' N. on the lat. arc
 3°46' E. on the decl. arc and determine a true meri-
 dian with the solar at cor. Secs. 10,11,14,15,

Thence I run,
 N. 0°1'W. between Secs. 10 and 11 over rolling moun-
 taineous country,

Ascend,
 20.00 Cross summit of ridge, course NE. and SW.

Descend,
 38.00 Enter canon, course SW.
 40.00 Set a lava stone 16x12x10 ins. ¹¹12 ins. in ground for 1/4
 Sec. cor. marked 1/4 on W. face, raised a mound of
 stones 2 ft. base 1.5 ft. high W. of cor.

No trees, pits impracticable.
 45.00 Cross dry bed of canon, 100 lks. wide, course SW.

Ascend,
 55.00 Leave canon, *ascend*
 80.00 Set a lava stone 20x12x12 ins. ¹⁵16 ins. in ground for cor.
 Secs. 2,3,10,11, marked 5 grooves on S. and 2 grooves
 on E. edges, raised a mound of stones 2 ft. base 1.5
 ft. high, W. of cor.

No trees, pits impracticable.
 Soil rocky, fourth rate,
 Land rolling mountaineous,
 Mountaineous land 80.00 chs.

Chains.

Thence I run,
S.89°56'E. on a random line between Secs. 2 and 11
over rough mountaineous country,
40.00 Set temporary 1/4 Sec.cor.
79.94 Intersect Sec.line at 2 lks.S.of cor.Secs.1,2,11 and.12,
Thence I run,
N.89°57'W. on a true line between Secs.2 and 11,
Descend,
17.00 Cross canon, 200 lks.wide, course SW.
Ascend,
39.97 Set a lava stone 20x10x3 ins. ¹⁵ ins.in ground for 1/4
Sec.cor, marked 1/4 on N.face, raised mound of stones
2 ft.base, 1.5 ft.high N.of cor.
No trees, pits impracticable.
Descend,
56.00 Enter canon, course SW.
59.00 Cross dry bed of canon, 50 lks.wide, course SW.
Ascend,
63.75 Leave canon,
79.94 The cor.Secs. 2,3,10,11,
Soil rocky, fourth rate,
Land rolling mountaineous,
Mountaineous land 79.94 chs.

October 16, 1905.

October 17, 1905.
At 8h.a.m.l.m.t. I set off 34°49'N.on the lat.arc
and 9°8'S.on the decl.arc. and determine a true
meridian with the solar at cor.Secs. 1,2,11,12,
Thence I run,
N.9°1'W. on a random line between Secs. 1 and 2
40.00 Set temporary 1/4 Sec.cor.
79.80 Intersect Tp.line at 5 lks.E.of cor.Secs. 1,2,35,36,
Thence I run,
S.0°3'E. on a true line between Secs. 1 and 2, over
rolling mountaineous country,
Ascend,
20.00 Summit of ridge, course E. and W.
Descend,
39.80 Set a lava stone 16x10x10 ins. ¹⁶ ins.in ground for 1/4
Sec.cor. marked 1/4 on W.face, raised a mound of stone
2 ft.base, 1.5 ft.high W.of cor.
No trees, pits impracticable,
50.50 Enter canon, course SW.
53.00 Cross dry bed of canon, 50 lks.wide, course SW.
Ascend,
55.30 Leave canon,
58.00 Cross summit of ridge, course E. and W.
Descend,
63.55 Cross dry wash, 75 lks.wide, course W.
Ascend,
79.80 The cor.Secs. 1,2,11,12,
Soil rocky, lava formation, fourth rate,
Land rolling mountaineous,
Mountaineous land 79.80 chs.

At 12 h.m.l.m.t. I set off 9°12'S. on the decl.arc and
observed the sun on the meridian at cor.Secs. 2,3,
10,11, the resulting lat.is 34°49'N.
Thence I run,
N.0°1'W. on a random line between Secs. 2 and 3,
40.00 Set temporary 1/4 Sec.cor.
79.74 Intersect Tp.line at 7 lks.E.of cor.Secs.2,3,34,35,
Thence I run,
S.0°4'E.on a true line between Secs.2 and 3
Descend,
21.00 Cross gulch 50 lks.wide, course W.
Ascend,

Subdivisions of T. 17 N., R. 21 W., continued,

Chains

25.00 Cross summit of ridge, course NE. and SW.

28.00 Descend, Cross gulch 25 lks.wide, course W.

35.00 Ascend, Cross ridge, course E. and W.

39.74 Descend, Set a ~~lat~~ stone 18x15x12 ins. ¹² 14 ins.in ground for 1/4 Sec.cor. marked 1/4 on W. face, raised mound of stones 2 ft.base 1.5 ft.high W. of cor.

43.00 No trees, pits impracticable, Cross gulch, 20 lks.wide, course W.

79.74 Ascend, The cor.Secs. 2,3,10,11. Soil rocky, fourth rate, Land rolling mountaineous, Mountaineous land 79.74 chs.

October 17, 1905.

October 18, 1905.

At 8h.a.m.l.m.t. I set off ^{34° 45' N} 34°44' N.on the lat.arc and 9°30' S.on the decl.arc and determine a true meridian with the solar at the standard cor.Secs.33 and 34 The line running N.from this cor.traverses a miry slough covered with 2 to 18 ins.water making it impossible to establish a line from this point, the land being covered with dense Mesquite timber, and very heavy undergrowth,

40.00 Therefore, I ~~set off~~ ^{offset} 13.85 chs. E. from which point, I run, N.0°2'W. through heavy Mesquite timber and dense undergrowth, *Ref. sec. 34 and 35*

To a point, Thence I run, West 13.85 chs. to true point for 1/4 Sec.cor. over marshy land through heavy timber and dense undergrowth,

Set a Mesquite post 4 ins.sq. 4 ft.long, 3 ft.in ground for 1/4 Sec.cor. marked 1/4 S³ on W.face, *and 3/4 on E face*

Whence a Mesquite 6 ins.diam.bears N.55°E. 11 lks.dist, marked 1/4 S.34 B.T.

A Mesquite 6 ins.diam.bears N.74°W.32 lks.dist.marked 1/4 S.33 B.T.

The line running N.from this cor.crosses wet miry land through heavy Mesquite timber and dense undergrowth, through which it is not practicable to establish the line,

Therefore, I run East 13.85 chs. to a point, Thence I run,

80.00 N.0°2'W. through heavy Mesquite timber and dense undergrowth, To a point,

Thence I run, West 13.85 chs.to a true point for cor.Secs.27,28,33, 34, set a Mesquite post 4 ins.sq. 4 ft.long, 3 ft. in ground, marked T.17 N.S.27 on NE., R.21 W.S.34 on SE., S.33 on SW. and S.28 on NW.faces, scribed 3 notches on E. and 1 notch on S. edges,

Whence a Mesquite 6 ins.diam.bears N.58°15'W. 44 lks. dist. marked T.17 N.R.21 W.S.28 B.T.

A Mesquite 4 ins.diam.bears N.40°30'E. 53 lks.dist. marked T.17 N.R.21 W.S.27 B.T.

A Mesquite 6 ins.diam.bears S.59°15'E. 47 lks.dist, marked T.17 N.R.21 W.S.34 B.T.

A Mesquite 5 ins.diam.bears S.15°15'W. 45 lks.dist. marked T.17 N.R.21 W.S.33 B.T.

Soil sandy loam, first rate, Land level, marshy and subject to overflow, covered with heavy Mesquite Timber and dense undergrowth, 80.00 chs.

October 18, 1905.

Chains

October 19, 1905.
 at 8h.a.m.l.m.t. I set off $34^{\circ}45'N$. on the lat.arc
 $9^{\circ}52'S$. on the decl.arc and determine a true meridian
 with the solar at the cor.Secs. 27,28,33,34,
 Thence I run,
 East on a random between Secs. 27 and 34, through
 dense Mesquite timber and undergrowth,
 40.00 Set temporary $1/4$ Sec.cor.
 80.00 Intersect Sec.line at N.7 lks.of cor.Secs.26,27,34,35,
 Thence I run,
 $N.89^{\circ}57'W$. on a true line between Secs. 27 and 34,
 over rough broken mountaineous country, *ascending*
 14.00 Descend,
 28.00 Cross gulch 30 lks.wide, course SW.,
 Ascend,
 40.00 Set a lava stone $18 \times 14 \times 10$ ins. ¹² ins.in ground for $1/4$
 Sec.cor. stone marked $1/4$ on N.face, raised a mound of
 stones 2 ft.base, 1.5 ft.high N.of cor.
 No trees, pits impracticable,
 Descend,
 59.00 Edge of mesa,
 Descend abruptly into Mohave Valley through heavy Mes-
 quite timber,
 66.00 Cross road, course N. and S.
 80.00 The cor.Secs. 27,28,33,34,
 Soil, 21 chs. sandy loam, first rate; 59 chs. rocky,
 fourth rate,
 Land 59 chs.mountaineous, 21 chs.level covered with
 heavy Mesquite timber and dense undergrowth,
 Mountaineous land or land covered with heavy timber
 and dense undergrowth 80.00 chs.

 At 12h.m.l.m.t. I set off $9^{\circ}56'S$. on the decl.arc and
 observed the sun on the meridian, the resulting lat.
 is $34^{\circ}45'N$. at cor.Secs. 27,28,33,34,
 Thence I run,
 $N.0^{\circ}2'W$. between Secs. 27 and 28, through heavy Mesq
 quite timber and dense undergrowth,
 30.05 Cross road, course NW. and SE. ¹⁵
 40.00 Set a lava stone, $20 \times 7 \times 5$ ins. ¹⁶ ins.in ground for $1/4$
 Sec.cor. marked $1/4$ on W.face,
 Whence a Mesquite 6 ins.diam.bears $N.54^{\circ}E$. 17 lks.dist,
 marked $1/4$ S.27 B.T.
 A Mesquite 8 ins.diam.bears $S.85^{\circ}W$. 66 lks.dist.marked
 $1/4$ S.28 B.T.
 44.00 Leave timber,
 45.00 Leave Valley, enter hills,
 Ascend abruptly,
 55.00 Cross summit of ridge, course NE. and SW.
 Descend,
 64.49 Cross gulch 100 lks.wide, course W.
 Ascend,
 80.00 Set a lava stone $20 \times 8 \times 8$ ins. ¹⁵ ins.in ground for cor.
 Secs.21,22,27,28, marked 3 grooves on E. and 2 Groove
 on S. edges, raised a mound of stones 2 ft.base, 1.5
 ft.high W.of cor.
 No trees, pits impracticable,
 Soil 45 chs. sandy loam, first rate; 35 chs. rocky and
 gravelly fourth rate.
 Land 45 chs.level covered with heavy timber and dense
 undergrowth; 35 chs. rolling mountaineous,
 Mountaineous land or land covered with heavy timber
 and dense undergrowth 80.00 chs.

October 19, 1905.

October 20, 1905.
 At 8h.a.m.l.m.t. I set off ^{$34^{\circ}45'N$} ~~$34^{\circ}44'N$~~ on the lat.arc
 $10^{\circ}13'S$. on the decl.arc and determine a true meridian
 with the solar at Standard cor.Secs.32 and 33,

Subdivisions of T. 17 N., R. 21 W., continued.

Chains

Thence I run,
 N.0°2'W. between Secs. 32 and 33, through heavy
 Mesquite timber and dense undergrowth,
 40.00 Set a mesquite post 4 ins.sq. 4 ft.long, 3 ft.in
 ground for 1/4 Sec.cor. marked 1/4 S.on ³W.face, and 32 on E face
 Whence a Mesquite 10 ins.diam.bears S.88°W. 105 lks.
 dist. marked 1/4 S.32 B.T.
 A Mesquite 6 ins.diam.bears S.58°45'E. 70 lks.dist.
 marked 1/4 S.33 B.T.
 80.00 Set a Mesquite post 4 ins.sq. 4 ft.long 3 ft.in ground
 for cor.Secs. 28,29,32,33, marked T.17 N.S.28 on NE.,
 R.21 W.S.33 on SE., S.32 on SW. and S.29 on NW.faces,
 scribed 1 groove on S. and 4 grooves on E. edges,
 Whence a Mesquite 10 ins.diam.bears S.67°30'W. 76 lks.
 dist.marked T.17 N.R.21 W.S.32 B.T.,
 A Mesquite 4 ins.diam.bears S.81°30'E. 37 lks.dist.
 marked T.17 N.R.21 W.S.33 B.T.
 A Mesquite 4 ins.diam.bears N.26°E.185 lks.dist.marked
 T.17 N.R.21 W.S.28 B.T.
 A Mesquite 6 ins.diam.bears N.19°W. 249 lks.dist.marked
 T.17 N.R.21 W.S.29 B.T.
 Soil sandy loam, first rate,
 Land level, subject to overflow, covered with heavy
 Mesquite timber and dense undergrowth of Arrow-wood,
 80.00 chs.

 Thence I run,
 East on a random line between Secs. 28 and 33, through
 heavy Mesquite timber and dense undergrowth,
 40.00 Set temporary 1/4 Sec.cor.
 80.00 Intersect Sec.line at 12 lks.N.of cor.Secs.27,28,33,34,
 Thence I run,
 N.89°55'W.on a true line between Secs.28 and 33,
 12.16 East bank of Powell Slough,
 24.82 West bank Powell Slough, water 6 ins.deep, course SW.
 40.00 Set Mesquite post 4 ins.sq. 4 ft.long 3 ft.in ground
 for 1/4 Sec.cor.marked 1/4 S²⁸ on N.face, and 32 on S face.
 Whence a Mesquite 6 ins.diam.bears N.74°E. 53 lks.dist.
 marked 1/4 S.28 B.T.
 A Mesquite 4 ins.diam.bears S.48°W.26 lks.dist.marked
 1/4 S.33 B.T.
 55.31 East side of W.fork of Powell Slough,
 62.00 West bank Slough, 1 ft.water, course SE.
 80.00 Cor.Secs.28,29,32,33,
 Soil sandy loam, first rate,
 Land level, subject to overflow, covered with heavy
 Mesquite timber and dense undergrowth of Arrow-
 wood, 80.00 chs.

October 20, 1905.

 October 21, 1905.
 At 8h.a.m.l.m.t. I set off ^{34°45'N} ~~54°45'N~~ on the lat.arc
 ✓ 10°35'S.on the decl.arc and determine a true meridian
 with the solar at the Standard cor.Secs.31 and 32,
 Thence I run,
 N.0°3'W.between Secs.31 and 32,through heavy Mesquite
 timber and dense undergrowth of Arrow-wood,
 20.00 Cross Indian fence, course NE. and SW.
 25.00 Enter ground cultivated by Indians, lying E.and W.of
 line,
 28.50 A point whence Indian Shack bears E.3.5 chs.dist.
 34.00 Leave cultivated ground, cross fence, course NW. and SE.
 35.00 A point whence Indian Shack bears W. 3 chs.dist.
 40.00 Set a Mesquite post 4 ins.sq. 4 ft.long 3 ft.in ground
 for 1/4 Sec.cor.marked 1/4 S³¹ on W.face, and 32 on E face
 Whence a Mesquite 8 ins.diam.bears S.40°45'W. 11 lks.
 dist, marked 1/4 S.31 B.T.
 A Mesquite 6 ins.diam.bears N.64°E.25 lks.dist.marked

Chains

42.12 1/4 S.32 B.T.
Intersect left bank Colorado River, bank 8 ft. high, main channel close to bank,
Set a mesquite post 4 ins. sq. 4 ft. long 3 ft. in ground for meander cor. frac. Secs. 31 and 32, marked M.C. on N. face, T. 17 N. on S., R. 21 W. S. 32 on E. and S. 31 on W. faces,
Whence a Mesquite 6 ins. diam. bears S. 35° 30' E. 38 lks. dist. marked T. 17 N. R. 21 W. S. 32 M.C. B.T.
A Mesquite 8 ins. diam. bears S. 18° 45' W. 103 lks. dist. marked T. 17 N. R. 21 W. S. 31 M.C. B.T.,
Soil sandy loam, first rate,
Land level, subject to overflow, covered with heavy timber and dense undergrowth, 42.12 chs.

At 12h. m. l. m. t. I set off 10° 39' S. on the decl. arc and observed the sun on the meridian at cor. Secs. 28, 29, 32, 33, the resulting lat. being 34° 45' N.
Thence I run
West between Secs. 29 and 32 through heavy Mesquite timber and dense undergrowth,
37.50 Cross road leading to Mallen, course N. and S.
40.00 Set a Mesquite post 4 ins. sq. 4 ft. long 3 ft. in ground, for 1/4 Sec. cor. marked 1/4 S. on N. face, and 32 on S. face
Whence a Mesquite 4 ins. diam. bears N. 78° 30' E. 14 lks. dist. marked 1/4 S. 29 B.T.
A Mesquite 6 ins. diam. bears S. 75° W. 98 lks. dist. marked 1/4 S. 32 B.T.
57.75 Intersect left bank Colorado River, bank 5 ft. high, main channel close to bank,
Set a Mesquite post 4 ins. sq. 4 ft. long 3 ft. in ground for meander cor. frac. Secs. 29 and 32, marked M.C. on W., T. 17 N. S. 29 on N., R. 21 W. on E. and S. 32 on S. faces,
Whence a Mesquite 6 ins. diam. bears S. 38° 15' E. 147 lks. dist. marked T. 17 N. R. 21 W. S. 32 M.C. B.T.
A Mesquite 6 ins. diam. bears N. 37° E. 39 lks. dist. marked T. 17 N. R. 21 W. S. 29 M.C. B.T.
Soil sandy loam, first rate,
Land level, subject to overflow, covered with heavy Mesquite timber and dense undergrowth of Arrow-wood 57.75 chs.

October 21, 1905.

October 23, 1905.
At 8h. a. m. l. m. t. I set off 34° 45' N. on the lat. arc 11° 17' S. on the decl. arc and determined a true meridian at cor. Secs. 28, 29, 32, 33 with the solar,
Thence I run,
N. 0° 2' W. between Secs. 28 and 29 through heavy Mesquite timber and dense undergrowth of Arrow-wood,
29.32 South bank inlet to Powell Slough,
30.00 North bank slough, water 2 ft. to 4 ft. deep, course SE.
40.00 Set a Mesquite post 4 ins. sq. 4 ft. long 3 ft. in ground for 1/4 Sec. cor. marked 1/4 S. on W. face, and 28 on E. face
Whence a Mesquite 4 ins. diam. bears S. 59° W. 36 lks. dist. marked 1/4 S. 29 B.T.
A Mesquite 6 ins. diam. bears S. 17° E. 70 lks. dist. marked 1/4 S. 28 B.T.
80.00 Set a Mesquite post 4 ins. sq. 4 ft. long 3 ft. in ground for cor. Secs. 20, 21, 28, 29, marked T. 17 N. S. 21 on NE., R. 21 W. S. 28 on SE., S. 29 on SW. and S. 20 on NW. faces, with 2 grooves on S. and 4 grooves on E. edges.
Whence a Mesquite 8 ins. diam. bears N. 59° W. 61 lks. dist. marked T. 17 N. R. 21 W. S. 20 B.T.
A Mesquite 6 ins. diam. bears N. 63° E. 80 lks. dist. marked T. 17 N. R. 21 W. S. 21 B.T.

Subdivisions of T. 17 N., R. 21 W., continued.

Chains

- A Mesquite 6 ins.diam.bears S.69°W.82 lks.dist.marked
T.17 N.R.21 W.S.29 B.T.
A Mesquite 8 ins.diam.bears S.38°E. 15 lks.dist.marked
T.17 N.R.21 W.S.28 B.T.
Soil sandy loam, first rate,
Land level, subject to overflow, covered with heavy
Mesquite timber and dense undergrowth of Arrow-wood,
80.00 chs.
-
- Thence I run,
West between Secs.20 and 29, through heavy Mesquite
timber and dense undergrowth of Arrow-wood,
33.90 Cross road to Mellen, course N. and S.
40.00 Set a Mesquite post 6 ins.sq. 4 ft.long, 3 ft.in
ground for 1/4 Sec.cor.marked 1/4 S on N.face, and 29 on S.face.
Whence a Mesquite 5 ins.diam.bears S.3°30'W. 70 lks.
dist.marked 1/4 S.29 B.T.
A Mesquite 6 ins.diam.bears N.47°30'W.195 lks.dist.
marked 1/4 S.20 B.T.
70.69 Intersect left bank Colorado River, bank 4 ft.high,
main channel close to bank,
Set a Mesquite post 4 ins.sq. 4 ft.long 3 ft.in ground
for meander cor.frac.Secs. 20 and 29, marked M.C.on
W., T.17 N.S 20 on N., R.21 W.on E. and S.29 on S.
faces,
Whence a Mesquite 4 ins.diam.bears S.3°30'W. 19 lks.
dist.marked T.17 N.R.21 W.S.29 M.C.B.T.
A Mesquite 4 ins.diam.bears N.37°15'E.19 lks.dist.
marked T.17 N.R.21 W.S.20 M.C.B.T.
Soil sandy loam, first rate,
Land level, subject to overflow, covered with heavy
Mesquite timber and dense undergrowth of Arrow-wood,
70.69 chs.
- October 23, 1905.
-
- October 24, 1905.
At 8h.a.m.l.m.t. I set off 34°46'N.on the lat.arc
and 11°38'S.on the decl.arc. and determine a true
meridian with the solar at the cor.Secs. 21,22,27,28,
Thence I run,
N.0°2'W.between Secs. 21 and 22 over rough rolling
mountaineous country,
Descend,
1.75 Cross gulch 30 lks.wide course W.
Ascend,
20.00 Summit of ridge, course NE. and SW.,
Descend,
33.95 Enter canon, course SW.
35.00 Cross dry bed of canon, 50 lks.wide,course SW.
Ascend,
36.50 Leave canon, *ascend*
40.00 Set a lava stone 18x10x8 ins. in mound of stones, for 1/4
Sec.cor.marked 1/4 on W.face, raised mound of stones
2 ft.base, 1.5 ft.high W. of cor.
No trees, pite impracticable,
46.00 Cross summit of ridge, course NE. and SW., descend,
52.00 Cross gulch, 20 lks.wide, course SW.
Ascend,
54.00 Cross ridge, course NE. and SW.
Descend,
55.60 Cross gulch 30 lks.wide, course SW.
Ascend,
61.00 Cross summit of ridge, course NE. and SW.
Descend,
66.50 Cross gulch 100 lks.wide, course W.
Ascend,
71.00 Cross ridge, course E. and W.

Chains

- Descend,
76.00 Cross gulch 150 lks.wide, course W.
- Ascend,
80.00 Set a lava stone 18x10x10 ins. ¹²14 ins.in ground for cor
Secs. 15,16,21,22, marked 3 grooves on S. and E.
edged, raised mound of stones 2 ft.base, 1.5 ft.high
W.of cor.
No trees, pits impracticable,
Soil rocky, lava formation, fourth rate,
Land rolling mountaineous, very rough,
Mountaineous land 80.00 chs.
-
- At 12 h.m.l.m.t. I set off 11943'S. on the decl.arc
and observed the sun on the median at Cor.Secs.
21,22,27,28, the resulting lat.is, 34°46'N.
Thence I run,
S.89°57'E. on a random line between Secs. 22 and 27,
40.00 Set temporary 1/4 Sec.cor.
79.96 Intersect Sec.line at 5 lks.N.of cor.Secs.22,23,26,27,
Thence, I run
N.89°55'W. on a true line between Secs. 22 and 27,
Descend,
13.00 Cross canon, 20 lks.wide, course SW.
Ascend, by bed of canon, 20 lks. course SW.
39.98 Set a lava stone 20x10x8 ins. 16 ins.in ground for 1/4
Sec.cor.marked 1/4 on N.face, raised mound of stones
2 ft.base, 1.5 ft.high N.of cor.
No trees, pits impracticable,
58.65 Cross summit of ridge, course NE. and SW.
Descend, pits impracticable.
62.00 Cross gulch 30 lks.wide, course S.
Ascend,
79.96 Cor.Secs.21,22,27,28, course S.
Soil rocky, lava formation, fourth rate,
Land broken, rolling mountaineous, very little vegeta-
tion.
Mountaineous land 79.96 chs.
-
- Thence I run from cor.Secs. 15,16,21,22,
S.89°55'W. on a random line between Secs. 15 and 22,
40.00 Set temporary 1/4 Sec.cor,
80.06 Intersect Sec.line at 18 lks.N.of cor.Secs.14,15,22,23,
Thence I run,
N.89°47'W. on a true line between Secs.15 and 22,
over rolling mountaineous country,
Descend,
10.20 Cross gulch 100 lks.wide, course SW.
Ascend,
20.00 Cross summit of ridge, course NE. and SW.
Descend,
27.00 Cross gulch, 100 lks.wide, course SW.
Ascend,
40.03 Set a lava stone 24x12x10 ins. 18 ins.in ground for 1/4
Sec.cor.marked 1/4 on N.face, raised mound of stones
2 ft.base, 1.5 ft.high N.of cor.
No trees pits impracticable.
Descend,
42.50 Cross gulch 50 lks.wide, course SW.
Ascend,
57.00 Summit of ridge, course NE. and SW.
Descend,
70.00 Cross gulch 20 lks.wide, course SW.
Ascend,
80.06 The cor.Secs. 15,16,21,22,
Soil rocky, lava formation, fourth rate,
Land rolling mountaineous, very little vegetation,
Mountaineous land 80.06 chs.

October 24, 1905.

Chains

October 25, 1905.

34° 47' 7"

At 8h.a.m.l.m.t. I set off ~~34° 45'~~^{34° 47' 7"} N. on the lat. arc and 11° 59' S. on the decl. arc and determine a true meridian with the solar at the cor. Secs. 15, 16, 21, 22, Thence I run,

N. 0° 2' W. between Secs. 15 and 16, over rolling mountainous country,

Ascend,

7.00 Summit of ridge, course NE. and SW.

Descend,

34.00 Enter canon,

35.00 Cross dry bed of canon, 50 lks. wide, course SW.

Ascend,

36.00 Leave canon, *ascend*

40.00 Set a lava stone 18x12x10 ins. ¹² 14 ins. in ground for 1/4 Sec. cor. marked 1/4 on W. face, raised mound of stones 2 ft. base 1.5 ft. high W. of cor.

No trees, pits impracticable,

60.00 Summit of ridge, course NE. and SW.

Descend,

77.00 Cross dry wash 200 lks. wide, course SW.

Ascend,

80.00 Set a lava stone 20x10x8 ins. ¹⁵ 16 ins. in ground for cor. Secs. 9, 10, 15, 16, marked 4 grooves on S. and 3 grooves on E. edges, raised mound of stones 2 ft. base, 1.5 ft. high W. of cor.

No trees, pits impracticable.

Soil rocky, fourth rate,

Land broken mountainous,

Mountainous land 80.00 chs.

Thence I run,

S. 89° 47' E. on a random line between Secs. 10 and 15,

40.00 Set temporary 1/4 Sec. cor.

79.96 Intersect Sec. line at S. 11 lks. from cor. Secs. 10, 11, 14 15,

Thence I run,

N. 89° 52' W. on a true line between Secs. 10 and 15, over rolling mountainous country,

Ascend,

20.00 Cross summit of ridge, course NE. and SW.

Descend,

31.00 Enter canon,

34.50 Cross dry bed of canon, 20 lks. wide, course SW.

Ascend,

36.00 Leave canon, *ascend*

39.98 Set a lava stone 20x10x5 ins. in mound of stones, for 1/4 Sec. cor. marked 1/4 on N. face, raised mound of stones 2 ft. base, 1.5 ft. high N. of cor.

No trees, pits impracticable,

60.00 Cross summit of ridge, course N. and S.

Descend,

75.00 Cross canon 40 lks. wide, course S.

Ascend,

79.96 Cor. Secs. 9, 10, 15, 16,

Soil rocky, lava formation, fourth rate,

Land rolling mountainous, very little vegetation,

Mountainous land 79.96 chs.

At 12h.m.l.m.t. I set off 12° 3' S. on the decl. arc and observed the sun on the meridian, the resulting lat. is 34° 48' N., at cor. Secs. 9, 10, 15, 16,

Thence I run,

N. 0° 2' W. between Secs. 9 and 10, over rolling mountainous country,

Ascend,

25.00 Summit of ridge, course E. and W.

Descend,

Chains	
32.50	Cross gulch 50 lks.wide, course W. Ascend,
40.00	Set a lava stone 20x18x15 ins. ¹⁵ 16 ins.in ground for 1/4 Sec.cor. marked 1/4 on W.face, raised mound of stones 2 ft.base, 1.5 ft.high W.of cor. No trees, pits impracticable,
42.00	Cross summit of ridge, course E. and W., Descend,
47.50	Cross gulch 50 lks.wide, course W. Ascend,
65.00	Cross summit of ridge, course E. and W. Descend,
80.00	Set a lava stone 20x10x8 ins. ¹⁵ 16 ins.in ground for cor. Secs. 3,4,9,10, marked 5 grooves on S. and 3 grooves on E. edges, raised mound of stones 2 ft.base, 1.5 ft.high W.of cor. No trees, pits impracticable. Soil rocky, lava formation, fourth rate, Land rolling mountaineous, very little vegetation, Mountaineous land 80.00 chs.

	Thence I run, S.89°52'E. between Secs. 3 and 10, on a random line, 40.00 Set temporary 1/4 Sec.cor. 79.90 Intersect Sec.line at S. 10 lks.from cor.Secs.2,3,10,11 Thence I run, N.89°56'W.on a true line between Secs.3 and 10, Ascend,
39.95	Summit of ridge, course NE. and SW. Set a lava stone 20x8x6 ins. ¹⁵ 16 ins.in ground for 1/4 Sec.cor. marked 1/4 on N.face, raised mound of stones 2 ft.base 1.5 ft.high N.of cor. No trees, pits impracticable. Descend,
73.25	Cross gulch 50 lks.wide, course SW.
75.25	Cross same gulch 50 lks.wide, course NW. Ascend,
79.90	The cor.Secs. 3,4,9,10, Soil rocky, fourth rate, Land broken, rolling mountaineous, very little vegetation. Mountaineous land 79.90 chs.
October 25, 1905.	

	October 26, 1905. At 8h.a.m.l.m.t. I set off 34°46'N.on the lat.arc abd 12°20'S.on the deul.arc and determine a true me- ridian with the solar at cor.Secs.20,21,28,29, Thence I run, S.89°55'E. on a random line between Secs.21 and 28, 40.00 Set temporary 1/4 Sec.cor, 80.06 Intersect sec.line at S. 2 lks.of cor.Secs. 21,22,27,28, Thence I run, N.89°56'W. on a true line between Secs.21 and 28, Descend,
4.80	Cross wash, 30 lks.wide, course SW. Ascend,
18.00	Cross summit of ridge, course NE. and SW. Descend,
27.45	Cross dry wash 50 lks.wide, course SW. Ascend,
30.00	Summit of ridge, course NE. and SW. Descend, abruptly,
32.00	Enter Mohave Valley, through heavy timber and dense undergrowth,
35.52	Cross road, course NW. and SE.
40.03	Set a Mesquite post 4 ins.sq. 4 ft.long 3 ft.in ground for 1/4 Sec.cor.marked 1/4 S ¹ on N.face, and 28 on p face Whence, a Mesquite 19 ind.diam.bears N.37°30'E. 94

Chains

- lks.dist. marked 1/4 S.21 B.T.
 A Mesquite 10 ins.diam.bears S.54°30'E. 97 lks.dist.
 marked 1/4 S.28 B.T.
- 51.83 East bank Powell Slough, water 6 ins.deep, course S.
 58.00 West bank Powell Slough,
 80.06 Cor.Secs.20,21,28,29,
 Soil 32 chs. gravelly, third rate, 48.06 chs. sandy
 loam, first rate,
 Land 32 chs.rolling mountaineous, 48.06 chs. level,
 subject to overflow, covered with heavy Mesquite
 timber and dense undergrowth.
 Mountaineous land or land covered with heavy timber
 and dense undergrowth 80.06 chs.
-
- Thence I run,
 N.0°2'W. between Secs. 20 and 21, through heavy Mes-
 quite timber and dense undergrowth,
 40.00 Set a Mesquite post 4 ins.sq. 4 ft.long, 3 ft.in ground
 for 1/4 Sec.cor. marked 1/4 S₂₀ on W.face, and 21 on E face
 Whence a Mesquite 8 ins.diam.bears N.75°E. 37 lks.dist.
 marked 1/4 S. 21 B.T.
 A Mesquite 6 ins.diam.bears N.80°W. 12 lks.dist.marked
 1/4 S.20 B.T.
- 75.25 Cross N.end Powell Slough, course SE. 75 lks.wide,
 about 6 ins.water.
- 80.00 Set a Mesquite post 4 ins.sq. 4 ft.long 3 ft.in ground
 for cor.Secs. 16,17,20,21, marked T.17 N.S.16 on NE.,
 R.21 W.S.21 on SE., S.20 on SW. and S.16 on NW.faces,
 3 grooves on S. and 4 grooves on E. edges,
 Whence a Mesquite 4 ins.diam.bears N.44°45'E. 88 lks.
 dist.marked T.17 N.R.21 W.S.16 B.T.
 A Mesquite 8 ins.diam.bears S.68°30'E. 68 lks.dist.
 marked T.17 N.R.21 W.S.21 B.T.
 A Mesquite 10 ins.diam.bears S.42°45'W. 126 lks.dist.
 marked T.17 N.R.21 W.S.20 B.T.
 A Mesquite 5 ins.diam.bears N.69°W. 96 lks.dist.marked
 T.17 N.R.21 W.S.17 B.T.
 Soil sandy loam, first rate,
 Land, level subject to overflow, covered with heavy
 Mesquite timber and dense undergrowth 80.00 chs.
-
- Thence I run,
 S.89°56'E. on a random line between Secs. 16 and 21,
 40.00 Set temporary 1/4 Sec.cor.
 80.20 The cor.Secs.15,16,21,22,
 Thence I run,
 N.89°56'W. on a true line between Secs. 16 and 21,
 Descend,
 18.70 Cross wash 30 lks.wide, course SW.
 Ascend,
 28.00 Cross summit of ridge, course NE. and SW.
 Descend,
 36.00 Edge of mesa,
 Descend abruptly into Mohave Valley,
 38.00 Enter Mohave Valley,
 40.10 Set a lava stone 18x12x5 ins. ¹²ins.in ground for 1/4
 Sec.cor.marked 1/4 on N.face, raised mound of stones
 2 ft.base 1.5 ft.high N.of cor.
 No trees, pits impracticable.
 Through dense undergrowth,
 50.00 Enter heavy Mesquite timber,
 53.85 Cross road, course NW. and SE.
 80.20 The cor.Secs. 16,17,20,21,
 Soil 38 chs.gravelly third rate; 42.20 chs. sandy loam,
 first rate,
 Land 38 chs. rolling mountaineous; 42.20 chs. level

Chains

covered with heavy Mesquite timber or dense undergrowth, Mountaineous land or land covered with heavy timber or dense undergrowth 80.20 chs.

October 26, 1905.

October 27, 1905.

At 8h.a.m.l.m.t. I set off $34^{\circ}47'N.$ on the lat.arc and $12^{\circ}40'S.$ on the decl.arc and determined a true meridian with the solar at cor.Secs. 16,17,20,21,

Thence I run,

$N.0^{\circ}2'W.$ between Secs. 16 and 17, through heavy Mesquite timber and dense undergrowth,

20.65 Cross road to Mellen, course E. and W.

40.00 Set a Mesquite post 4 ins.sq. 4 ft.long 3 ft.in ground for $1/4$ Sec.cor. marked $1/4 S$ on W.face, and 16 on E face

Whende a Mesquite 6 ins.diam.bears $N.73^{\circ}E.$ 18 lks.dist. marked $1/4 S.16$ B.T.

A Mesquite 8 ins.diam.bears $N.46^{\circ}45'W.$ 77 lks.dist. marked $1/4 S.17$ B.T.

68.00 Leave timber, enter dense undergrowth,

70.00 Leave Mohave Valley, ~~enter hills~~

Ascend, abruptly, *over mesa country*

80.00 Set a lava stone $16 \times 8 \times 6$ ins. ~~12~~ ins.in ground for cor. Secs. 8,9,16,17, marked 4 grooves on S. and 4 grooves on E. edges, raised mound of stones 2 ft.base 1.5 ft.high W.of cor.

No trees, pits impracticable.

Soil 70 chs. ~~sandy~~ loam first rate, 10 chs. gravelly third rate.

Land 70 chs. level covered with heavy Mesquite Timber and dense undergrowth, 10 chs. Mountaineous land.

Mountaineous land or land covered with heavy timber or dense undergrowth 80.00 chs.

Thence I run,

$S.89^{\circ}56'E.$ on a random line between Secs.9 and 16,

40.00 Set temporary $1/4$ Sec.cor.

80.10 Intersect Sec.line at N. 10 lks.from cor.Secs.9,10, 15,16,

Thence I run,

$N.89^{\circ}52'W.$ on a true line between Secs. 9 and ~~10~~¹⁶, over level mesa country, sloping to S. and W.

40.05 Set a lava stone $18 \times 10 \times 8$ ins. ~~14~~ ins.in ground for $1/4$ Sec.cor. marked $1/4$ on N.face, raised mound of stones 2 ft.base 1.5 ft.high N.of cor.

No trees, pits impracticable.

80.10 The cor.Secs. 8,9,16,17.

Soil gravelly, third rate,

Land level mesa,

October 27. At 12h.M.l.m.t. I set off $12^{\circ}45'S.$ on the decl.arc and observed the sun on the meridian, the resulting lat.is $34^{\circ}48'N.$ at cor.Secs.8,9,16,17,

Thence I run,

$N.0^{\circ}2'W.$ between Secs. 8 and 9 over rolling mountainous country,

Descend,

3.00 Enter canon,

7.00 Cross dry bed of canon, 50 lks.wide, course SW.

Ascend,

11.00 Leave canon, *ascend*

18.00 Cross summit of ridge, course NE. and SW.

Descend,

30.00 Cross canon, 50 lks.wide, course SW.

Ascend,

Subdivisions of T. 17 N., R. 21 W., continued.

Chains

- 40.00 Set a lava stone 16x8x8 ins. ~~12~~¹¹ ins. in ground for 1/4 Sec. cor. marked 1/4 on W. face, raised mound of stones 2 ft. base, 1.5 ft. high W. of cor.
No trees, pits impracticable,
- 45.00 Cross summit of ridge, course NE. and SW.
Descend,
- 55.00 Cross canon 50 lks. wide, course SW.
Ascend,
- 80.00 ~~Summit of ridge, course E. and W.~~
Set a lava stone 16x8x8 ins. ~~12~~¹¹ ins. in ground for cor. Secs. 4, 5, 8, 9, marked 5 grooves on S. and 4 grooves on E. edges, raised mound of stones 2 ft. base, 1.5 ft. high W. of cor.
No trees, pits impracticable,
Soil rocky, fourth rate,
Land rolling mountaineous, very little vegetation,
Mountaineous land 80.00 chs.

-
- Thence I run,
S. 89° 52' E. on a random line between Secs. 4 and 9,
40.00 Set temporary 1/4 Sec. cor.
80.20 Intersect Sec. line at S. 14 lks. from cor. Secs. 3, 4, 9, 10,
Thence I run,
N. 89° 58' W. on a true line between Secs. 4 and 9,
Ascend,
12.00 Summit of ridge, course NE. and SW.
Descend,
25.00 Cross canon 50 lks. wide, course SW.
Ascend,
40.10 Set a lava stone 16x10x10 ins. ~~12~~¹¹ ins. in ground for 1/4 Sec. cor. marked 1/4 on N. face, dig pits 18x18x12 ins. 3 ft. dist. E. and W. from cor. raised mound of earth 3.5 base 1.5 ft. high N. of cor.
No trees available,
Descend, over mesa country, sloping gently to S. and W.
80.20 The cor. Secs. 4, 5, 8, 9,
Soil sandy and gravelly second rate,
Land level and broken,

October 27, 1905.

October 28, 1905.

- At 8h. a.m. l.m.t. I set off 34° 47' N. on the lat. arc and 13° 0' S. on the decl. arc and determine a true meridian with the solar at cor. Secs. 16, 17, 20, 21,
Thence I run,
West between Secs. 17 and 20, through heavy Mesquite timber and dense undergrowth,
38.50 Cross NW. cor. brush shack owned by W. Griffin,
40.00 Set a Mesquite post 4 ins. sq. 4 ft. long 3 ft. in ground for 1/4 Sec. cor. marked 1/4 S on N. face, *and 20 on S face*
Whence a Mesquite 8 ins. diam. bears S. 21° 30' W. 110 lks. dist. marked 1/4 S. 20 B.T.
A Mesquite 8 ins. diam. bears N. 29° 30' E. 140 lks. dist. marked 1/4 S. 17 B.T.
43.00 Cross road, course NE. and SW.
58.30 Cross road, course NW. and SE.
80.00 Set a Mesquite post 4 ins. sq. 4 ft. long 3 ft. in ground for cor. Secs. 17, 18, 19, 20, marked T. 17 N. S. 17 on NE., R. 21 W. S. 20 on SE., S. 19 on SW. and S. 18 on NW. faces, 3 grooves on S. and 5 grooves on E. edges.
Whence a Mesquite 8 ins. diam. bears S. 14° 30' E. 10 lks. dist. marked T. 17 N. R. 21 W. S. 20 B.T.
A Mesquite 8 ins. diam. bears S. 57° W. 222 lks. dist. marked T. 17 N. R. 21 W. S. 19 B.T.
A Mesquite 8 ins. diam. bears N. 27° 15' W. 59 lks. dist. marked T. 17 N. R. 21 W. S. 18 B.T.
A Mesquite 6 ins. diam. bears N. 67° 15' E. 94 lks. dist.

Chains

marked T.17 N.R.21 W.S.17 B.T.
Soil sandy loam, first rate,
Land level, subject to overflow, covered with Heavy
Mesquite timber and dense undergrowth, 80.00 chs.

Thence I run,
S.0°3'E. between Secs. 19 and 20, through heavy timber
and dense undergrowth,

40.00 Set a Mesquite post 4 ins.sq. 4 ft.long 3 ft.in ground
for 1/4 Sec.cor.marked 1/4 S on W.face, and 20 on E face
Whence a Mesquite 4 ins.diam.bears N.66°45'W. 24 lks.
dist, marked 1/4 S.19 B.T.
A Mesquite 4 ins.diam.bears N.41°E. 24 lks.dist.marked
1/4 S.20 B.T.

40.60 Cross NW.cor.stockade corral owned by William Roberts,
52.85 Cross fence, enter cultivated land, lying E. and W.of
line, about 5 acr. in extent, cultivates by Indians.

57.15 Indian Shack 10 lks.E., leave cultivated land,

64.42 Intersect left bank Colorado River, bank 4 ft.high,
current close to bank,
Set a Mesquite post 4 ind.sq. 4 ft.long 3 ft.in ground
for meander cor.frac.Secs. 19 and 20, marked M.C.on S,
T.17 N.on N.,R.21 W.S.20 on E. and S.19 on W.faces
Whence a Mesquite 4 ins.diam.bears S.89°W. 14 lks.dist.
marked T.17 N.R.21 W.S.19 M.C.B.T.
A Mesquite 6 ins.diam.bears N.79°30'E. 13 lks.dist.
marked T.17 N.R.21 W.S.20 M.C.B.T.
Soil sandy loam, first rate,
Land level subject to overflow, covered with Mesquite
timber and dense undergrowth of Arrow-wood, 64.42 chs.

October 28. At 12h.m.l.m.t. I set off 13°5'S.on the
decl.arc and observed the sun on the meridian, at
cor.Secs. 17,18,19,20, the resulting lat.is 34°47'N. ✓

Thence I run,
West on a random line between Secs. 18 and 19, through
heavy Mesquite timber and dense undergrowth,

39.50 Set temporary witness 1/4 Sec.cor., the point at 40.00
chs. falling in slough, course S., in depth of about
2 ft.water,

79.90 Intersect Range line at S. 5 lks.from cor.Secs.13,18,19,
24,

Thence I run,
S.89°58'E. on a true line between Secs. 18 and 19,

6.15 Cross fence, course N. and S.,

22.90 Cross fence, course N. and S.

32.90 Cross fence, course N. and S.

38.30 Cross fence, course NE. and SW.

39.40 West edge of slough, course S., water about 2 ft.deep,

39.90 Point for 1/4 Sec.cor.falls in slough, water about 2
ft.deep, unsuitable for establishing permanent corner,

40.20 ~~Set a Mesquite post 4 ins.sq. 4 ft.long 3 ft.in ground~~
40.40 for witness 1/4 Sec.cor. marked 1/4 S.W.C.on N.face, and 19 on
Whence a Willow 12 ins.diam.bears N.37°30'W. 69 lks. a fall
dist.marked 1/4 S.18 W.C.B.T.

A Mesquite 6 ins.diam.bears S.5°45'E. 247 lks.dist.
marked 1/4 S.19 W.C.B.T.

House of Jose Valensuela bears North 2.50 chs. dist.

42.20 Cross fence, course NW. and SE.

79.90 Cor.Secs. 17,18,19,20,
Soil sandy loam, first rate,
Land level, subject to overflow, covered with heavy
timber and dense undergrowth.
Timber, Mesquite, Willow and Cottonwood,
Land covered with heavy timber and dense undergrowth
79.90 chs.

October 28, 1905.

Chains

October 29, 1905.

At 8h.a.m.l.m.t. I set off $34^{\circ}47'N.$ on the lat.arc and $13^{\circ}20'S.$ on the decl.arc and determine a true meridian with the solar at cor.Secs.17,18,19,20,

Thence I run,

$N.0^{\circ}3'W.$ between Secs.17 and 18, through heavy timber and dense undergrowth,

17.00 Cross road, course E. and W.,

29.35 Cross road, course E. and W.,

40.00 Set a mesquite post 4 ins.sq. 4 ft.long 3 ft.in ground for $1/4$ Sec.cor.marked $1/4 S.$ on W.face, and 17 on E.faceWhence a Mesquite 6 ins.diam.bears $N.17^{\circ}15'E.$ 172 lks. dist.marked $1/4 S.17 B.T.$ A Mesquite 8 ins.diam.bears $S.27^{\circ}30'W.$ 94 lks.dist. marked $1/4 S.18 B.T.$

80.00 Set a Mesquite post 4 ins.sq. 4 ft.long 3 ft.in ground for cor.Secs. 7,8,17,18, marked T.17 N.S.8 on NE.,

R.21 W.S.17 on SE., S.18 on SW. and S.7 on NW.faces, with 4 grooves on S. and 5 grooves on E. edges,

Whence a Mesquite 6 ins.diam.bears $S.6^{\circ}E.$ 89 lks.dist. marked T.17 N.R.21 W.S.17 B.T.A Mesquite 6 ins.diam.bears $S.14^{\circ}45'W.$ 109 lks.dist. marked T.17 N.R.21 W.S.18 B.T.A Mesquite 6 ins.diam.bears $N.60^{\circ}15'W.$ 14 lks.dist. marked T.17 N.R.21 W.S.7 B.T.A Mesquite 6 ins.diam.bears $N.50^{\circ}30'E.$ 325 lks.dist. marked T.17 N.R.21 W.S.8 B.T.

Soil sandy loam, first rate,

Land level, subject to overflow, covered with heavy timber and dense undergrowth of Arrow-wood.

Timber, Mesquite, Willow and Cottonwood.

Land covered with heavy timber and dense undergrowth

80.00 chs.

Thence I run,40.00 $N.89^{\circ}58'W.$ on a random line between Secs.7 and 18,Set temporary $1/4$ Sec.cor.

79.70 Intersect Range line at N. 18 lks.of cor.Secs.7,12,13,18,

Thence I run,

$N.89^{\circ}54'E.$ on a true line between Secs. 7 and 18, through heavy timber and dense undergrowth,

37.20 Cross road, course NE. and SW.

39.70 Set a Mesquite post 4 ins.sq. 4 ft.long 3 ft.in ground for $1/4$ Sec.cor.marked $1/4 S.$ on N.face, and 18 on S.faceWhence a Mesquite 4 ins.diam.bears $N.45^{\circ}W.$ 132 lks. dist.marked $1/4 S.7 B.T.$,A Mesquite 15 ins.diam.bears $S.31^{\circ}30'W.$ 42 lks.dist. marked $1/4 S.18 B.T.$

79.70 Cor Secs. 7,8,17;18,

Soil sandy loam, first rate,

Land level, subject to overflow, covered with heavy Mesquite timber and dense undergrowth of Arrow-wood

79.70 chs.

Thence I run,

40.00 East on a random line between Secs. 8 and 17, through heavy Mesquite timber and dense undergrowth,

Set temporary $1/4$ Sec.cor.

80.06 Intersect Sec.line at W. 10 lks.N.of cor.Secs.8,9,16;17,

Thence I run,

$N.89^{\circ}56'W.$ on a true line between Secs.8 and 17,

Descend,

10.00 Edge of mesa, descend abruptly,

14.00 Enter Mohave Valley through heavy timber and dense undergrowth,

40.03
~~40.00~~ Set a Mesquite post 4 ins.sq. 4 ft.long 3 ft.in ground

Chains
 for 1/4 Sec.cor., marked 1/4 S. ⁸ on N. face, *and 17 on S face*
 Whence a Mesquite 6 ins.diam.bears ~~N.34°45' W. 127~~ lks.
 dist. marked 1/4 S.8 B.T. *N.59 1/2° W 97*
 A Mesquite 8 ins.diam.bears S.42°E. 53 lks.dist.marked
 1/4 S.17 B.T.
 80.06 Cor.Secs.7,8,17,18,
 Soil sandy loam first rate 66 chs., gravelly and rocky
 third rate 14.06 chs.
 Land 66 chs.level, covered with heavy Mesquite timber and
 dense undergrowth; 14.06 chs.mountaineous land.
 Mountaineous land or land covered with dense timber
 and dense undergrowth 80.06 chs.

October 29, 1905.

October 30, 1905.
 At 8h,a.m.l.m.t. I set off 34°48'N on the lat.arc and
 13°40'S on the decl.arc and determined a true meridian
 with the solar at cor.Secs.7,8,17,18,
 Thence I run,

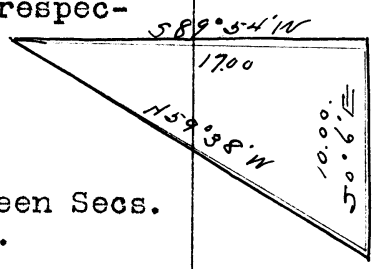
N.0°3'W. between Secs. 7 and 8, through heavy Mesquite
 timber and dense undergrowth,
 9.25 Cross slough 30 lks.wide, water 1 ft.deep, course SW.
 26.40 Cross road, course NE. and SW.
 40.00 Set a mesquite post 4 ins. sq. 4 ft.long 3 ft.in
 ground for 1/4 Sec.cor. marked 1/4 S.7 on W. face, *and 8 on E face*
 Whence a Mesquite 6 ins.diam.bears S.23°45' W. 51 lks.dist.
 marked 1/4 S.7 B.T.
 A Mesquite 5 ins.diam.bears S.36 3/4°E. 169 lks.dist.marked
 1/4 S.8 B.T.
 80.00 Set a Mesquite post 4 ins.sq. 4 ft.long 3 ft.in ground
 for cor.Secs.5,6,7,8, marked T.17 N.S.5 on NE., R.21
 W.S.8 on SE., S.7 on SW. and S.6 on NW.faces, 5
 grooves on E. and S.edges,
 Whence a Mesquite 6 ins.diam.bears N.84°30'W. 108 lks.
 dist.marked T.17 N.R.21 W.S.6 B.T.
 A Mesquite 6 ins.diam.bears N.52°45'E. 178 lks.dist.
 marked T.17 N.R.21 W.S.5 B.T.
 A Mesquite 6 ins.diam.bears S.11°45'E. 97 lks.dist.
 marked T.17 N.R.21 W.S.8 B.T.
 A Mesquite 8 ins.diam.bears S.48°45'W. 96 lks.dist.
 marked T.17 N.R.21 W.S.7 B.T.
 Soil sandy loam, first rate,
 Land level, covered with heavy Mesquite timber and dense
 undergrowth, 80.00 chs.

Thence I run,
 S.89°56'E. on a random line between Secs. 5 and 8,
 40.00 Set temporary 1/4 Sec.cor,
 80.00 Intersect Sec.line at S.5 lks.from cor.Secs.4,5,8,9,
 Thence I run,

N.89°58'W.on a true line between Secs. 5 and 8,
 Descend over mesa country, sloping to S. and W.
 40.00 Set a lava stone 16x10x10 ins. // 12 ins.in ground for 1/4
 Sec.cor.marked 1/4 on N.face, raised mound of stones
 2 ft.base 1.5 ft.high N.of cor.
 No trees, pits impracticable.
 70.00 Edge of mesa, descend abruptly,
 72.00 Enter Mohave Valley through heavy Mesquite timber and
 dense undergrowth,
 80.00 Cor.Secs. 5,6,7,8,
 Soil 8 chs.sandy loam first rate, 72 chs.rocky and
 gravelly, thrd rate,
 Land level,
 Land covered with heavy timber and dense undergrowth
 80.00 chs.

Subdivisions of T. 17 N., R. 21 W., continued.

Chains
 40.00 Thence I run,
 65.00 S.89°54'W. on a random line between Secs. 6 and 7,
 Set temporary 1/4 Sec.cor.
 65.00 Set temporary meander cor. on E. bank of Spear's Lake.
 To determine the distance across I set a flag on line
 on W.bank of lake, then measure a base line S.0°6'E.
 10.00 chs. whence flag bears N.58°38'W., from flag to
 S.end of base S.59°38'E. which gives angles respec-
 tively 90°, 59°32', and 30°28'.
 I compute distance as follows:
 Tang. 59°32' X 10.00 chs. or
 1.69992 X 10.00 chs. = 17.00 chs.
 Also 65.00 + 17.00 makes
 82.00 Whence meander cor.on W.bank Spear's Lake between Secs.
 1 and 12 T.17 N.R.22 W. bears S. 10 lks.dist.
 Thence I run,
 N.89°50'E. on a true line between Secs.6 and 7,
 2.45 To true point for cor.on Range line for Secs. 1,6,7,12,
 This point falls in Spear's Lake in about 4 ft.of
 water,
 17.00 E. edge of Spear's Lake where I set a Mesquite post 4
 ins.sq. 4 ft.long 3 ft.in ground for meander cor.
 of frac.Secs.6 and 7, T.17 N.R.21 W., marked T.17 N.
 S.6 on N.face, M.C.on W.face, R.21 W.on E.face and
 S.7 on S.face,
 Whence a Mesquite 4 ins.diam.bears N.40°E. 200 lks.dist
 marked T.17 N.R.21 W.S.6 M.C.B.T.
 A Mesquite 10 ins.diam. bears S.38°15'E.367 lks.dist.
 marked T.17 N.R.21 W.S.7 M.C.B.T.
 17.10 Cross road, course NE. and SW.
 17.29 Cross Mohave and Milltown R.R., course NE. and SW.
 42.00 Set a Mesquite post 4 ins.sq. 4 ft.long 3 ft.in ground
 for 1/4 Sec.cor.marked 1/4 S. on N.face, and 7 on S.face
 Whence a Mesquite 4 ins.diam.bears S.39°30'W. 55 lks.
 dist.marked 1/4 S.7 B.T.
 A Mesquite 12 ins.diam.bears N.7°30'W. 232 lks.dist.
 marked 1/4 S.6 B.T.
 51.00 Cross road, course NE. and SW.
 82.00 Cor.Secs.5,6,7,8,
 Soil sandy loam, first rate,
 Land level 65 chs.covered with heavy timber and dense
 undergrowth; 14.55 covered by water of Spear's Lake;
 79.55 chs.



October 30, 1905.

 October 31, 1905.
 At 8h.a.m.1.m.t. I set off 34°49'N.on the lat.arc
 and 13°59'S.on the decl.arc and determine a true meri-
 dian with the solar at cor.Secs.3,4,9,10,
 Thence I run,
 N.0°2'W. on a random line between Secs.3 and 4, over
 rolling mountaineous country,
 40.00 Set temporary 1/4 Sec.cor,
 79.77 Intersect Township line at 10 lks.E.of cor.Secs.3,4,33
 and 34,
 Thence I run,
 S.0°6'E. on a true line between Secs.3 and 4,
 Descend,
 17.00 Enter deep canon,
 19.00 Cross dry bed of canon, 30 lks.wide, course SW.
 Ascend,
 20.50 Leave canon,
 39.00 Top of ridge, course NE. and SW.
 Descend,
 39.77 Set a lava stone 18x12x10 ins. ¹² ins.in ground for 1/4
 Sec.cor.marked 1/4 on W.face, raised mound of stones
 2 ft.base 1.5 ft.high W.of cor.
 No trees, pits impracticable.
 54.00 Enter canon,abruptly,
 57.00 Cross dry bed of canon, 20 lks.wide, course SW.

Chains	
	Ascend,
61.00	Leave canon, <i>ascend</i>
70.00	Summit of ridge, course E. and W
	Descend,
77.00	Cross canon, 50 lks.wide, course NW.
	Ascend,
79.77	The cor.Secs.3,4,9,10
	Soil rocky, lava formation, fourth rate, Land rolling mountaineous, Mountaineous land, 79.77 chs.

	Thence I run, N. 0° 2' W. on a random line from cor.Secs.4,5,8,9, between Secs.4 and 5, over rolling mountaineous coun- try,
40.00	Set temporary 1/4 Sec.cor.
79.76	Intersect Township line at 3 lks.W.of cor.Secs.4,5,32,33, Thence I run, S.0°1'E. on a true line between Secs. 4 and 5,
	Ascend,
16.00	Top of ridge, course E. and W.
	Descend,
32.51	Enter canon,
38.00	Cross dry bed of canon, 20 lks.wide, course SW.
	Ascend,
39.76	Set a lava stone 18x12x7 ins. ¹² / ₁₄ ins.in ground for 1/4 Sec.cor.marked 1/4 on W.face, raised mound of stones 2 ft.base, 1.5 ft.high W.of cor.
	No trees, pits impracticable,
41.76	Leave canon, <i>ascend</i>
50.00	Top of ridge, course E. and W.
	Descend,
58.50	Enter canon,
59.25	Cross dry bed of canon 50 lks.wide, course SW.
	Ascend,
60.25	Leave canon, <i>ascend</i>
79.76	Cor.Secs.4,5,8,9, Soil rocky, fourth rate, Land rolling mountaineous, Mountaineous land 79.76 chs.

	October 31. At 12h.m.1.m.t. I set off 14°4'S.on the decl. arc and observed the sun on the meridian, at cor.Secs.5,6,7,8, the resulting lat.being 34°49'N.
	Thence I run, N.0°3'W.between Secs.5 and 6 on a random line, through heavy timber and dense undergrowth,
40.00	Set temporary 1/4 Sec.cor,
79.76	Intersect Township line at cor.Secs.5,6,31,32, Thence I run, S.0°3'E.on a true line between Secs. 5 and 6,
	Descend,
12.00	Edge of mesa, descend abruptly,
14.00	Enter Mohave Valley,
16.76	Enter heavy Mesquite timber and dense undergrowth,
30.00	Leave timber enter dense undergrowth of Arrow-wood,
39.76	Set a lava stone 24x15x7 ins. ¹² / ₃₀ ins.in ground for 1/4 Sec.cor.marked 1/4 on W.face, raised mound of stones 2 ft.base, 1.5 ft.high W.of cor.
	No trees available, pits impracticable,
45.00	Enter Mesquite timber,
79.76	Cor.Secs.5,6,7,8, Soil 65.76 sandy loam, first rate; 14 chs.gravelly third rate, Land 65.76 chs.level, covered with Mesquite timber and dense undergrowth; 14 chs. mountaineous, Mountaineous land or land covered with heavy timber or dense undergrowth 79.76 chs. October 31, 1905.

Meanders of Left bank Colorado River, up stream.

I commence at meander cor. on Standard line of ^Frac. Secs. 31, T.17 N., R. 21 W.

At this cor. November 10, I set off 34°44'N. on the lat. arc, 17°2'S. on the decl. arc and determine a true meridian with the solar, at 8h.a.m.l.m.t.

Thence I run with meanders in Sec. 31, through heavy timber and dense undergrowth, river bank at this cor. about 8 ft. high, current close in against bank and cutting,

N.47°E.	8.00	Chs.	
N.43°30'E.	5.00	"	
N.33°30'E.	5.60	"	
N.40°15'E.	17.00	"	At 13.00 chs. Indian Shack bears E. 3 chs.
N.36°E.	3.20	"	
N.45°30'E.	5.60	"	
N.42°45'E.	6.80	"	
N.39°E.	1.70	"	
N.48°15'E	4.10	"	To meander cor. of frac. Secs. 31 and 32.

Soil sandy loam, first rate,
Land level, covered with Mesquite timber and dense undergrowth of Arrow-wood, 57.00 chs.

Thence in Section 32, through scattering timber and dense undergrowth,

N.33°15'E.	5.50	Chs.	River bank about 8 ft. high,
N.26°30'E.	15.20	"	
N.29°45'E.	4.60	"	
N.20°45'E.	14.30	"	
N.73°45'E.	3.30	"	
N.52°45'E.	2.46	"	To mean. cor. on line between Secs. 29 and 32, river bank about 5 ft. high, current close in, cutting.

Soil sandy loam, first rate,
Land level, covered with scattering timber and dense undergrowth of Arrow-wood, 45.36 chs.

Thence in Sec. 29, through heavy Mesquite, Willow timber and dense undergrowth,

N.35°30'E.	3.70	Chs.	
N.27°E.	10.00	"	
N.10°30'E.	18.70	"	
N.18°45'W.	9.10	"	At 3.50 chs. cross inlet to Powell slough, 20 lks. wide, course NE. water about 2 ft. deep. At 8 chs. cross main inlet to Powell slough 30 lks. wide, course E. water 3 ft. deep.
N.16°30'W.	6.70	"	
N.21°W.	9.80	"	
N.37°W.	12.90	"	
N.26°30'W.	10.00	"	
N.21°45'W.	6.60	"	To mean. cor. on line between Frac. Secs. 20 and 29, river bank about 4 ft. high, current close in, cutting.

Soil sandy loam, first rate,
Land level, subject to overflow, covered with Mesquite, Willow and Cottonwood timber and dense undergrowth of Arrow-wood, 87.50 chs.

Thence in Sec. 20, through heavy timber of Mesquite, Willow and Cottonwood, and dense undergrowth,

N.25°W. 9.00 Chs.
 N.36°33'W. 9.20 " To mean.cor. on line between Frac Secs. 19 and 20, river bank 4 ft. high, current close in, cutting.

Soil sandy loam, first rate, Land level, subject to overflow, covered with timber of Mesquite, Willow and Cottonwood and dense undergrowth of Arrow-wood, 18.20 chs.

November 10, 1905.

November 11, 1905, At 8h.a.m.l.m.t. I set off 34° 46'N.on the lat.arc and 17°19'S.on the decl.arc and determine a true meridian with the solar at cor mean.cor. frac.Secs. 19 and 20,

Thence in Sec. 19, through scattering timber and dense undergrowth,

N.49°15'W. 7.30 Chs. Land cultivated by Indians lying to N. and E.of this line, extending to river bank,

N.53°30'W. 4.50 "
 N.49°15'W. 6.60 " From this point Indian Shack bears N.40°W. 3.5 chs.dist.

N.56°W. 7.80 "
 N.69°15'W. 5.30 "
 N.71°45'W. 5.40 "
 N.73°30'W. 1.60 "
 N.84°W. 3.50 "
 N.82°30'W. 6.50 "
 N.81°45'W. 6.80 "
 N.77°W. 4.70 "
 S.89°45'W. 3.30 "
 N.88°30'W. 6.50 "
 S.72°30'W. 9.30 "
 N.88°W. 4.10 "
 S.89°40'W. 4.02 "

To mean.cor.on Range line between Frac.Secs.19 and 24, river bank about 4 ft.high.

Soil sandy loam, first rate, Land level, subject to overflow, covered with Mesquite, Willow and Cottonwood timber and dense undergrowth, 87.22 chs.

November 11, 1905.

GENERAL DESCRIPTION.

This Township contains two distinct varieties of land, valley and mountains; the soil of the valley along the Colorado River is generally a rich sandy loam formed by the deposit of sediment of Colorado River, nearly all of the valley in this township is subject to overflow by the Colorado River; the soil contains some alkali.

The soil of that portion of this township outside the valley can be classed as third and fourth rates producing very little vegetation, generally covered with lava rocks.

The valley land is covered with heavy growth of Mesquite, Willow and Cottonwood timber and dense undergrowth of Arrow-wood.

Outside the valley there is no water.

There are two settlers in Section 20 and one on North boundary of Section 6, there is a school house in Section 7, there are two Indian families in Section 31, one Indian family in Section 32, one in Section 20, two in Section 19.

John J. Fisher
 U.S. Deputy Surveyor,

Chains.

November 14th 1905.

At 7h. a.m., l.m.t., I set off $34^{\circ} 50' N.$ on the lat. arc, $17^{\circ} 53' S.$ on the decl. arc, and determine a true meridian with the solar at the Meander Cor. on E. bank of Lake, bet. secs. 6 and 31. Tps. 17 and 18 N., R. 21 W.

Thence I run

In Sec. 6, through scattering mesquite timber and dense undergrowth.

S. 10 $3/4^{\circ} E.$	3.40 chs.	Bank of lake about 6 ft. high.
S. 8 $^{\circ} E.$	4.90 "	
S. 1 $^{\circ} E.$	2.50 "	
S. 4 $1/2^{\circ} E.$	2.00 "	
S. 8 $^{\circ} E.$	3.90 "	
S. 17 $1/4^{\circ} W.$	1.30 "	
S. 31 $1/2^{\circ} W.$	1.10 "	
S. 15 $1/4^{\circ} W.$	3.50 "	
S. 5 $1/4^{\circ} W.$	1.50 "	
S. 16 $1/4^{\circ} W.$	2.50 "	
S. 12 $1/2^{\circ} W.$	4.10 "	
S. 17 $1/4^{\circ} W.$	3.60 "	Leave dense undergrowth. Bank of lake about 7 ft. high.
S. 13 $^{\circ} W.$	5.40 "	
S. 4 $3/4^{\circ} E.$	7.00 "	
S. 13 $1/2^{\circ} E.$	6.70 "	
S. 1 $1/4^{\circ} E.$	9.50 "	
S. 0 $1/4^{\circ} E.$	14.00 "	
S. 4 $^{\circ} 55' W.$	4.08 "	To meander cor. of fracl. secs. 6 and 7.

Soil, sandy loam, first rate.

Land, level, 34.30 chs. covered with scattering mesquite, willow timber and dense undergrowth of arrow wood.

46.68 chs. covered with scattering mesquite timber. Bank about 2 ft. high.

November 15th 1905.

At 7h. a.m., l.m.t., I set off $34^{\circ} 29' N.$ on the lat. arc, $18^{\circ} 8' S.$ on the decl. arc and determine a true meridian at the Meander cor. of fracl. secs. 1, and 6.

Thence I run

With meanders in sec. 6, through scattering timber and dense undergrowth.

N. 48 $1/4^{\circ} E.$	5.00 chs.	Bank of lake about 2 ft. high.
N. 7 $1/4^{\circ} E.$	5.00 "	
N. 17 $1/4^{\circ} E.$	2.50 "	
N. 9 $1/2^{\circ} E.$	10.00 "	
N. 8 $^{\circ} E.$	4.20 "	
N. 6 $^{\circ} W.$	3.60 "	
N. 22 $^{\circ} W.$	2.90 "	
N. 23 $^{\circ} W.$	3.90 "	
N. 6 $^{\circ} W.$	2.70 "	
N. 40 $3/4^{\circ} W.$	4.74 "	To meander cor. of Tp. line bet. secs. 6 and 31.

Soil, sandy loam, first rate.

Land, level, covered with scattering mesquite and willow timber and dense undergrowth of arrow-wood.

44.54 chs.

Thence I run, In sec. 7, through scattering mesquite and willow timber from M.C. bet. secs. 6 and 7.

S. 7 $1/2^{\circ} W.$	18.50 chs.	
S. 14 $1/4^{\circ} W.$	19.40 "	
S. 25 $^{\circ} W.$	8.80 "	
S. 34 $3/4^{\circ} W.$	6.75 "	To meander cor. on Range line fracl. secs. 7 and 12.

Soil, sandy loam, first rate. Land, level, covered with scattering mesquite and willow timber 53.45 chs.

LIST OF NAMES

A list of the names of the individuals employed by *John J. Fisher*

....., United States Deputy Surveyor, to assist in running, measuring, and

marking the lines and corners described in the foregoing field notes of the survey of *Subs. F Meander*

T 17 N R 21 W and Meander Spears Lake

showing the respective capacities in which they acted:

- Henry R O'Connor* Chainman.
- Geo. W Cassidy* Chainman.
- Henry R O'Connor* Moundman.
- Geo. W Cassidy* Moundman.
- J. J. Murphy* Arman.
- J. W. Ricketts* Arman.
- Irving V. Angus* Flagman.

FINAL OATH OF ASSISTANTS.

We hereby certify that we assisted *John J. Fisher*

....., United States Deputy Surveyor, in surveying all

those parts or portions of the *Subdivisional and Meander*
lines T. 17 N. R. 21 W and Meander
lines Spears Lake

Salt River meridian, *Territory* of *Arizona* of the *Gila and*

in the foregoing field notes as having been surveyed by him and under his direction; and that said survey has been in all respects, to the best of our knowledge and belief, well and faithfully surveyed, and the corner monuments established, according to the instructions furnished by the United States Surveyor

General for *Arizona*

- Henry R O'Connor* Chainman. and Moundman
- Geo. W. Cassidy* Chainman. and Moundman.
- Moundman.
- Moundman.

- J. J. Murphy* Arman.
- J. W. Ricketts* Arman.
- Irving V. Angus* Flagman.

Subscribed and sworn to before me this *14th*

day of *January*, 190*6*



Commissioner
Nov 19 1908

J. J. Fisher
Notary Public

68
31

BOOK 2132

FINAL OATH OF UNITED STATES DEPUTY SURVEYOR.

I John J. Fisher United States Deputy Surveyor, do solemnly swear that, in pursuance of a contract received from Frank S. Ingalls United States Surveyor General for Arizona, bearing date of the 14th day of March, 1905, I have well, faithfully, and truly, in my own proper person, and in strict conformity with the instructions furnished by the United States Surveyor General for Arizona, the Manual of Surveying Instructions, and the laws of the United States, surveyed all those parts or portions of Subdivisions and Meander lines T 17 N R 21 W and Meander lines Speer's Lake

Salt River meridian, in the Territory of Arizona of the Gila and foregoing field notes as having been surveyed by me, and under my direction; and I do further solemnly swear that all the corners of said survey have been established and perpetuated in strict accordance with the Manual of Surveying Instructions, and the special written instructions of the United States Surveyor General for Arizona and in the specific manner described in the field notes, and that the foregoing are the original field notes of such survey.

John J. Fisher
United States Deputy Surveyor.

Subscribed by said John J. Fisher, and sworn to before me }
this 1st day of February, 1906



Frank S. Ingalls
U. S. Surveyor General
for Arizona.

APPROVAL.

OFFICE OF THE UNITED STATES SURVEYOR GENERAL,

Phoenix, Arizona June 29th, 1906

The foregoing field notes of the survey of the subdivisions and meander lines of T 17 N R 21 W of the Gila and Salt River Base and Meridian, in the territory of Arizona.

executed by John J. Fisher, U. S. deputy surveyor under his contract No. 128, dated March 14th, 1906, having been critically examined, and the necessary corrections and explanations made, the said field notes, and the surveys they describe, are hereby approved.

Frank S. Ingalls
United States Surveyor General.

I certify that the foregoing transcript of the field notes of the above described surveys in _____, has been correctly copied from the original notes on file in this office.

United States Surveyor General.