

Book H.

4-679.

Accepted May 8/99

Accepted Letter E: Mar 23-1908

JAN 3-1908

42

64726

2143

FIELD NOTES

BOOK 2143

OF THE SURVEY OF THE

2143

Boundaries of 2143
 T 16 + ~~17~~ N R 3 E. and
 Range of the 4th Standard Parallel North, R. 3rd and 4th E.

2143

Of the Gila Salt River Base Meridian,

Arizona

AS SURVEYED BY

Joseph B. Wright

, United States Deputy Surveyor,

Under his Contract No. 145, dated April 15, 1907

Survey commenced Dec 8th, 1907

Survey completed Dec 23rd, 1907

6-151

2143

NAMES AND DUTIES OF ASSISTANTS.

Leon G. Moore Chairman

Albert M. Crockett "

Frank E. Ball "

Harold G. Crain "

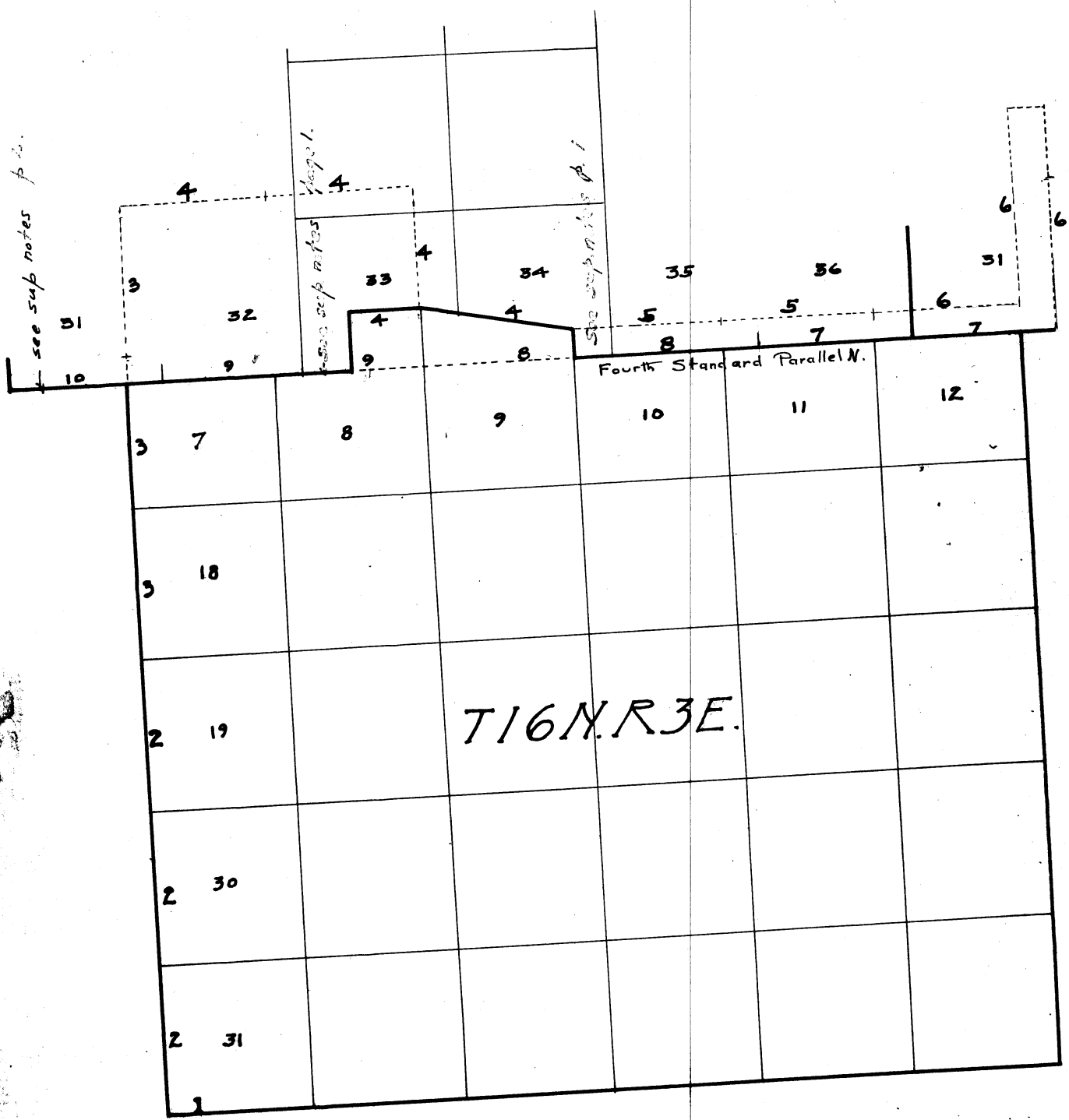
Arthur G. Wood Wagoner

Frank D. Ames Wagoner

Eugene J. Carter Foreman

BOOK 2143

Book No 2143

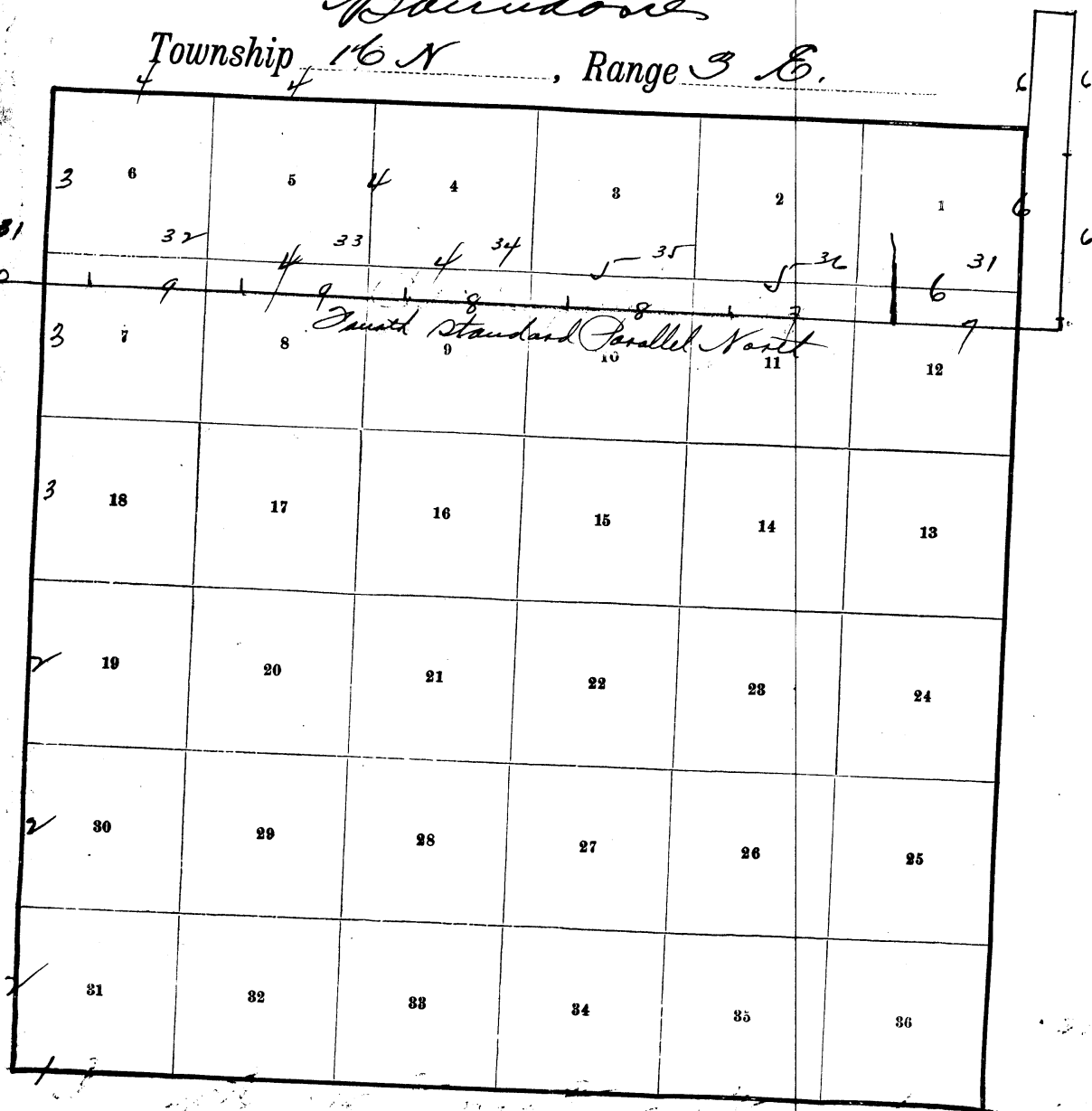


T16N.R3E.

INDEX DIAGRAM.

Paradise

Township *16 N*, Range *3 E*.



Meanders Page

126

BOOK 2143

PRELIMINARY OATHS OF ASSISTANTS.

We Leon G. Moore Albert M. Crake and Frank E. Earle and Harold G. Corain
do solemnly swear that we will well and faithfully execute the duties of chainmen; that we will level the
chain upon even and uneven ground, and plumb the tally pins, either by sticking or dropping the same; that
we will report the true distances to all notable objects, and the true lengths of all lines that we assist in
measuring, to the best of our skill and ability, and in accordance with instructions given us, in the survey of

Boundaries of T's 16 & 17 N. R. 3 E. G. T. S. R. 13 T. M.
Leon G. Moore, Chainman.

x Albert M. Crake, Chainman.

Frank E. Earle "
Harold G. Corain "

Subscribed and sworn to before me this 8th
day of December, 1907



Jesse B. Wright
U. S. Deputy Surveyor

I Arthur G. Wood and

do solemnly swear that we will well and truly perform the duties of moundmen in the establishment
of corners, according to the instructions given us, to the best of our skill and ability, in the survey of

Boundaries of T's 16 & 17 N. R. 3 E. G. T. S. R. 13 T. M.
A. G., Moundman.

Arthur G. Wood, Moundman.

Subscribed and sworn to before me this 8th
day of December, 1907



Jesse B. Wright
U. S. Dep. Suro.

I Frank D. Ames and

do solemnly swear that we will well and truly perform the duties of axmen in the establishment of corners
and other duties, according to instructions given us, to the best of our skill and ability, in the survey of

Boundaries of T's 16 & 17 N. R. 3 E. G. T. S. R. 13 T. M.
Frank D. Ames, Axman.

Frank D. Ames, Axman.

Subscribed and sworn to before me this 8th
day of December, 1907



Jesse B. Wright
U. S. Dep. Suro.

I, Eugene D. Barten, do solemnly swear that I will well and truly
perform the duties of flagman according to instructions given me, to the best of my skill and ability, in the
survey of Boundaries of T's 16 & 17 N. R. 3 E. G. T. S. R. 13 T. M.

x Eugene D. Barten, Flagman.

Subscribed and sworn to before me this 8th
day of December, 1907



Jesse B. Wright
U. S. Dep. Suro.

Completion of S. bdy. T.16 N. R. 3 E.

Chains

Survey Begun Dec. 8, 1907, and executed with a Young & Son's light mountain transit No. 6492 with Smith's patent solar attachment on side, the lat. & decl. arcs each reading by verniers to 1' of arc, which is also the least reading of the plates of the inst.

At the 1/4 sec. cor. on S. bdy. of sec. 31, T.16 N. R. 3 E., which is a limestone 14x10x10 ins. marked and witnessed as described by the Surveyor General, at 3h p.m., l.m.t., I set off 22° 39' S. on the decl. arc and 34° 44' N. on the lat. arc and determine a mer. with the solar, and mark a point in the mer. thus determined by a tack in a stake driven in the ground 10 chs. N. of My sta.

Dec. 9, 1907, at 2h 45m, a.m., l.m.t., I observe polaris at W. elong. in accordance with instructions in the "Manual" and turn off the azimuth of polaris 1° 27' to the East, which gives a mer. coinciding with the mer. established by the solar on preceding evening.

At 8h a.m., l.m.t., I set off 22° 42' S. on the decl. arc and 34° 44' N. on the lat. arc and determine a mer. with the which co-incides with the mer. already established by polaris obs. and solar. Hence I conclude that the adjustments of the transit are satisfactory.

The magnetic bearing of the true mer. at 8h am. is 15° W which angle gives the mag. var. as 15° E.

Thence I run,
West, along S. bdy. sec. 31.
Over mts. land asc. grad. through dense scrub oak.
17.00 Top of ridge, brs. S.E., desc.
28.00 Canyon, 150 lks. wide course S.E. asc.
38.50 Set a sandstone 24x10x6 ins. 18 ins. in the ground for cor. of Tps. 15 & 16 N. Rs. 2 & 3 E. marked with 6 notches on N.S. E. & W. edges, and raise a mound of stone 4 ft. base 2 1/2 ft. high S. of cor. from which,
A cedar tree 8 ins. diam. brs. S. 60° 45' W. 250 lks. dist. marked T.15 S. R. 2 E. S. 1 B.T.
A cedar tree 4 ins. diam. brs. N. 53° W. 171 lks. dist. marked T.16 N. R. 2 E. S. 36 B.T.
No other bearings available.

Land mts.
Soil, 3rd & 4th rate stony, gravelly.
Timber, scattering cedar.
Undergrowth, dense scrub oak.
Mts. alnd covered with dense undergrowth and exceptionally difficult to survey, 38.50 chs.

Chains From the cor. of Tps. 15 & 16 N. Rs. 2 & 3 E. as just established and described by me, I run North,
 along W. bdy. of sec. 31, Var. 15° E.
 Over mts. land desc. through dense scrub oak.
 04.50 Canyon, 30 lks. wide, course E. asc. steep.
 5.50 Road to mine brs. E. & W.
 13.50 Top of ridge, brs. E. desc. steep.
 30:00 Dry wash 30 lks. wide, course E.
 30.50 Trail, brs. E. & W. asc.
 39.00 Top of ridge, brs. E. desc.
 40.00 Set a limestone 20x6x6 ins. 15 ins. in the ground for 1/4 sec. cor. marked 1/4 on W. face and raise a mound of stone 2 ft. base 1 1/2 ft. high W. of cor. from which, A pine tree 14 ins. diam. brs. N.70° W. 290 lks. dist. marked 1/4 S. 36 B.T.
 No other bearings available.
 55.00 Canyon 80 lks. wide 150 ft. deep brs. E. asc. steep.
 65.60 Top of long ridge, brs. E. desc.
 72.00 Head of canyon, brs. E. asc.
 80.00 Set a sandstone 24x10x6 ins. 18 ins. in the ground for cor. of secs. 25, 30, 31 & 36, marked with 1 notch on S. & 5 notches on N. edges and raise a mound of stone 2 ft. base 1 1/2 ft. high W. of cor.
 No bearings available.
 Land mts. Soil, 3rd & 4th rate stony.
 Timber, scattering oak, cedar, juniper, pine.
 Undergrowth, manzanita, scrub oak.
 Mts. land exc. difficult to survey, 80.00 chs..

N. on W. bdy. sec. 30.

Var. 15° E.
 Over mts. land, asc. grad. over broken ground.
 66.00 Gulch 50 lks. wide, course E.
 35.00 Gulch 50 lks. wide, course E. ascend.
 40.00 Set a limestone 24x10x6 ins. 18 ins. in the ground for 1/4 sec. cor. marked 1/4 on W. face and raise a mound of stone 2 ft. base 1 1/2 ft. high W. of cor.
 No bearings available. Pits impracticable.
 41.00 Top of ridge, brs. E. desc.
 51.50 Gulch 50 lks. wide, course E. asc.
 57.00 Top of ridge, brs. E. desc.
 61.90 Road, from Jerome to Camp Verde. brs. E. & W.
 64.80 Wash 15 lks. wide, course E. asc.
 72.00 Top of high ridge, brs. E. desc.
 77.00 Road, brs. N.W. & S.E.
 80.00 Set a limestone 18x6x6 ins. 12 ins. in the ground for cor. of secs. 19, 24, 25 & 30, marked with 2 notches on S. & 4 notches on N. edges and raise a mound of stone 2 ft. base 1 1/2 ft. high W. of cor.
 No bearings available. Pits imprac.
 Land Mts. soil, 3rd & 4th rate stony.
 No timber. Undergrowth, scattering manzanita and scrub oak.
 Mts. land exceptionally difficult to survey 80.00 chs.
 At this cor. at 11h, 52m, 1.m.t., I set off 22° 45' S. on the decl. arc and observe the sun on the mer.
 the resulting lat. is 34° 46' N.

N. on W. bdy. sec. 19.
 Vsr. 15° E.

Over rolling land desc. grad.
 07.00 Gulch, 50 lks. wide, course S.E.
 Thence over very rough mts. land broken by ridges and gulches.
 General course S.E.
 31.50 Main Gulch, 50 lks. wide, course E. asc.
 40.00 I mark a limestone bldr. in place 15x12x6 ins. above ground with cross for exact cor. pt. with 1/4 on W. of cross and raise a mound of stone 2 ft. base 1 1/2 ft. high W. of cor. No bearings available. Pits imprac.

West Boundary T.16 N. R. 3 E.

Chains
 42.00 Top of ridge, slopes E. desc.
 80.00 Set a granite stone 20x8x8 ins. 15 ins. in the ground for cor. of secs. 13, 18, 19 & 24; marked with 3 notches on N. & 3 notches on S. edges and raise a mound of stone 2 ft. base 1 1/2 ft. high W. of cor.
 No bearings available. Pits imprac.
 Land mountainous.
 Soil, 3rd & 4th rate, stony gravelly.
 No timber. Undergrowth, scattering mesquite, tesselata.
 Mountainous land exc. difficult to survey, 80.00 chs.

North, on W. bdy. sec. 18.
 Over mts. land, very rough and broken.
 11.00 Gulch 80 lks. wide, course E.N.E. asc. grad.
 21.33 Beg. steep asc.
 35.90 Top of bluff, desc.
 36.30 Canyon, 50 lks. wide, course E. asc.
 40.00 Set a limestone 18x6x6 ins. 12 ins. in the ground for 1/4 sec. cor. marked 1/4 on W. face and raise a mound of stone 2 ft. base 1 1/2 ft. high W. of cor.
 No bearings available. Pits imprac.
 50.00 Asc. grad.
 60.00 Begin steep asc.
 72.80 Trail, Verde River to Jerome, brs. N.W. & S.E.
 80.00 Set a limestone 18x6x6 ins. 12 ins. in the ground for for. cor. of secs. 7, 12, 13 & 18, marked with 2 notches on N. and 4 notches on S. edges and raise a mound of stone 2 ft. base 1 1/2 ft. high W. of cor.
 No bearings available. Pits imprac.
 Land mts. Soil, stony, 3rd & 4th rate.
 Timber, scattering cedar. Undergrowth dense palo-negro.
 Mts. land exc. difficult to survey, 80.00 chs.
 Dec. 9, 1907

Dec. 10, 1907, at 9h a.m., l.m.t., at the cor. of secs. 7, 12, 13 & 18, I set off 22° 49' S. on the decl. arc, and 34° 47' N on the lat. arc and determine a true mer. with the solar. Thence I run, Var. 15° E.
 North on W. bdy. sec. 7.
 Over mts. land asc.
 10.00 Top of mesa thence thro' dense palo-negro undergrowth.
 40.00 Set a limestone 24x10x6 ins. 18 ins. in the ground for 1/4 sec. cor. marked 1/4 on W. face and raise a mound of stone 2 ft. base 1 1/2 ft. high W. of cor.
 No bearings available. Pits imprac.
 50.00 Top of high ridge, brs. E. desc. steep.
 62.00 Canyon 150 lks. wide, 200 ft. deep, course E. asc. steep.
 80.00 Set a limestone 18x6x6 ins. 12 ins. in the ground for Cor. of secs. 1, 6, 7 & 12, marked with 1 notch on N. & 5 notches on S. edges and raise a mound of stone 2 ft. base 1 1/2 ft. high W. of cor.
 No bearings available. Pits imprac.
 Land mts. Soil, stony 4th rate.
 Timber, scattering cedar. Undergrowth dense palo-negro.
 Mts. land exc. difficult to survey, 80.00 chs.

North on W. bdy. sec. 6
 Over mts. land.
 5.00 Head of canyon, course S.W. asc.
 12.35 Top of ridge, brs. S.W. desc.
 16.00 Desc. abrupt over bluff.
 23.00 Canyon 50 lks. wide, 200 ft. deep, course E. asc. abrupt.
 27.00 Top of bluff, brs. E. & W.
 31.00 Top of ridge, brs. N.E. desc. over bluff.
 32.00 Set a limestone 24x18x4 ins. 18 ins. in the ground for witness cor. to 1/4 sec. cor. marked W.C. 1/4 on W. face and raise a mound of stone 2 ft. base 1 1/2 ft. high W. of cor. No bearings available. Pits imprac.
 40.00 Cor. pt. for 1/4 sec. cor. in canyon, 200 ft. deep, 8 chs.

73.75 showing corner for 1/4 sec. cor. of sec. 13, 18, 19 & 24. Cor. of sec. 31 x 32. T. 17 N. R. 3 E.
 For description of canyon & bridge see page 10 of the book - 15 lks. sec. 21.

see page 10

West Boundary T. 16 N. R. 3 E. and re-tracements.

Chains	Ascend abrupt.
76.50	Top of bluff, thence over mesa.
80.00	I build a mound of stone and make diligent search for cor. on 4th std. Par. N. I am unable to find any trace of cor. and with the old field notes of the 4th Std. Par. N. as furnished by the Surveyor General, The topography of the country to the E. & W. does not agree. Mts. land exc. difficult to survey, 80.00 chs.
27.00	From the md. of stone above noted, I run, East, on random line, over very rough & broken land. Desc. steep.
38.20	Build md. of stone on line for theoretic 1/4 sec. cor. pt.
55.50	Desc. steeply to river.
74.15	W. bank of Verde River.
78.20	Theoretic cor. pt. falls in Verde River, course S. Line as run, 78.20 chs. mts. land exc. difficult to survey. From theoretic cor. pt. I run East, on random line, searching for 4th Std. Par. N. East bank of Verde River.
2.00	Build md. of stone as Witness point. thence over rolling ld.
4.50	Find stone mon. 1 ch. S. of line, No markings.
19.80	Build md. of stone on line and search for Cor. None found.
40.00	Set a post in md. of stone to mark theoretic cor. pt. We make diligent search of all the country along and about this line for cor. of std. Par. No cor. found nor does the topography compare in any way with the field notes of the 4th Std. Par. N. as furnished by the Surveyor General. Line as run, 80.00 chs. rolling land.
80.00	From theoretic cor. pt. above located, I run, South, on random line, over rolling land.
1.20	Road, Jerome to sycamore mine, brs. N.E. & S.W.
40.00	Build md. of stone on line.
67.00	Find cor. of secs. 4, 5, 8, & 9, of T. 16 N. R. 3 E. 50 lks. E. of line, marked and witnessed as described by the Surveyor General. Line as run to this point 67.00 chs. rolling land. Dec. 10, 1907.
	Dec. 11, 1907. Being unable to find any trace of the 4th Std. Par. N. I find it necessary to retrace certain lines, searching and noting the topography of the country, until I can locate some cor. of same and initiate and close my surveys. The plats showing theoretic location of the 4th Std. Par. as furnished by the Surveyor General being evidently in error. At 8h a.m., l.m.t., at the cor. of secs. 4, 5, 8 & 9, as above located, I set off 22° 53' S. on the decl. arc and 34° 48' N. on the lat. arc and determine a true mer. with the solar, thence I run, Var. 15° E. as per field notes furnished by the Surveyor General.
	West, bet. secs. 5, & 8. Over rolling land.
11.50	Road from Sycamore mine to Jerome brs. N.W. & S.E.
40.10	Find old 1/4 sec. cor. 165 lks. N. of line marked and witnessed as described by the Surveyor General. Hence the True course & dist. of this line is N. 87° 39' W. 40.13 chs. Rolling land 40.13 chs. No timber or undergrowth.
	I return to cor. of secs. 4, 5, 8 & 9, and run East, as per field notes furnished by the Surveyor General. Var. 15° E. Over rolling land.
39.88	Find old 1/4 sec. cor. 5.31 chs. S. of line marked and witnessed as described by the Surveyor General. True course and dist. of this 1/2 mile is S. 82° 25' E. 40.24 chs. From this old 1/4 sec. cor. I run, East,
39.85	Find old cor. of secs. 3, 4, 9 & 10 4.61 chs. S. of line which is a limestone 24x20x6 ins. marked and witnessed as described by the Surveyor Gen.

For changing line of the 4th cor. pt. into 2nd & 3rd

For this 1/2 mile are sup. notes book 9 - page 3.

For this mile are sup. notes book 9 - page 3.

Chains

True course and dist. of last 1/2 mile, S.83°24'E.40.13 chs.
 Line bet. secs. 4 & 9.
 Land rolling. Soil, 2nd & 3rd rate, sandy stony.
 No timber. Undergrowth scattering mesquite.
 Rolling land. 80.37 chs.

From this cor. I run, North, for a distance of 80.00 chs. and again make diligent search for cor. on 4 th Std. Par. N. covering the entire country for 1 mile to the E. & W. of line at theoretic cor.pt. Finding no trace of any Std. cor., I return to cor. of secs. 3,4,9 & 10, which I re-set and rebuild the mound of stone 2 ft. base 1 1/2 ft. high W. of cor.

39.90

From the cor. of secs. 3,4,9 & 10 as above described, I run East, bet. secs. 3 & 10. Over mts. ld. thro' dense palonegro Find Old 1/4 sec. cor. on line, marked and witnessed as described by the surveyor General.

This cor. I re-mark and re-set in its original position and raise a mound of stone 2 ft. base 1 1/2 ft. high N. of cor. There being no bearing trees, I blaze and mark A cedar tree 30 ins. diam. brs. N.85°W. 14 lks. dist. marked 1/4 S.3 B.T. No other trees available.

79.82

Find old cor. of secs. 2,3,10 & 11 12 lks. S. of line, which is a limestone 16x10x5 ins. marked and witnessed as described by the Surveyor General. This cor. I re-set and re-mark and build a mound of stone 2 ft. base 1 1/2 ft. high W. of cor. As new bearing trees, A cedar tree 12 ins. diam. brs. S.60°E. 37 lks. dist., marked T.16 N.R.3 E. S. 11 B.T. A cedar tree 30 ins. diam. brs. S.3° W. 147 lks. dist., marked T.16 N.R. 3 E. S. 10 B.T. A cedar tree 16 ins. diam. brs. N. 26 1/2° E. 122 lks. dist. marked T.16 N.R. 3 E. S. 2 B.T. No other bearings avail. True course of last 1/2 mile S.89°50'E. Land mts. Soil, 3rd rate stony gravelly. Timber, scattering cedar. Undergrowth dense palonegro. Mts. land covered with dense undergrowth and exc. difficult to survey, 79.82 chs.

39.87

East bet. secs. 2 & 11. Over broken and mts. land through dense palo-negro and cedar. Find old 1/4 sec. cor. 9 lks. N. of line, which is an old post marked and witnessed as described by the Surveyor General. This cor. being in a dilapidated condition and the markings nearly destroyed. I obliterate and at orig. cor.pt. Set a limestone 15x10x6 ins. 10 ins. in the ground for 1/4 sec. cor. marked 1/4 on W. face and raise a mound of stone 2 ft. base 1 1/2 ft. high N. of cor. No bearings available. Pits imprac. True course of this line N.89° 52' E. From the 1/4 sec. cor. I run, East, continuing measurement,

51.00

Top of high ridge, brs. S.W. Find old cor. of secs. 1,2,11 & 12, 4 lks. N. of line, which is a limestone 14x14 ins. x 6 ins. above ground, marked and witnessed as described by the Surveyor General. This stone I re-mark and re-set, and re-build the mound of stone 2 ft. base 1 1/2 ft. high W. of cor. No bearings available. Pits imprac. True course & dist. of last 1/2 mile, N.89°57'E.39.85 chs. Land Mts., broken, Soil, 3rd rate, gravelly, stony. Timber, cedar. Undergrowth, dense cedar, and palonegro. Mts. land covered with dense undergrowth and exceptionally difficult to survey, 79.72 chs.

79.72

At this cor. at 11h, 53m, l.m.t., I set off 22°56'S. on the decl. arc and obs. the sun on the mer. The resulting lat. is 34° 48'30" N.

For the course page 2, pp. Book A
Cors. destroyed see page 2. Refer to book A

Cors. destroyed see page 2. Refer to book A

Chains

East bet. secs. 1 & 12.
 Over mts. land, through dense cedar & palo-negro undergrowth
 21.55 Top of ridge, road, brs. N. & S. desc.
 33.00 Gulch 80 lks. wide, course S.
 39.90 Find old 1/4 sec. cor. 6 lks. S. of line, which is a lime-
 stone 18x10x5 ins. marked and witnessed as described by the
 Surveyor Gen. This stone I re-mark and re-set and build a
 md. of Stone 2 ft. base 1 1/2 ft. high N. of cor.
 No bearings available. Pits imprac.
 True course of line S. 89° 55' E.
 From this cor. I run East. continuing measurement,
 78.00 Top of mesa.
 79.76 Find cor. of secs. 1, 6, 7 & 12 on line which is a limestone
 10x10x6 ins. marked and witnessed as described by the
 Surveyor Gen. This stone I re-mark and re-set, and build
 a mound of stone 2 ft. base 1 1/2 ft. high W. of cor.
 from which as new bearing trees,
 A cedar tree 24 ins. diam. brs. S. 56° W. 103 lks. dist.
 marked T.16 N.R.3 E. S. 12 B.T.
 a cedar tree 12 ins. diam. brs. N. 46° W. 92 lks. dist.
 marked T.16 N.R.3 E. S. 1 B.T. No other bearings avail.
 Land, mts. Soil, stony, 3rd & 4th rate.
 Timber, cedar. Undergrowth, dense cedar & palo-negro.
 Mts. land covered with dense undergrowth & exceptionally
 difficult to survey, 79.76 chs.

 From the cor. above described, I run,
 North, Over very rough and broken ground.
 40.00 Set temp. md. of stone for 1/4 sec. cor. pt.
 80.00 Leave md. of stone on line and again make diligent search
 for cor. of 4th Sts. Par. N. finding none, I continue line N.
 111,21 Find 1/4 sec. cor. bet. secs. 29 & 30 of T.17 N.R.4 E.
 15.00 chs. E. of line which is a limestone 10x6 ins. 6 ins.
 above ground marked 1/4 on W. face and from which,
 A pine tree 8 ins. diam. brs. N. 31° E. 116 lks. dist.
 marked 1/4 S. 29 B.T.
 A pine tree 10 ins. diam. brs. N. 79° W. 94 lks. dist.
 marked 1/4 S. 30 B.T.
 Line as run and measured, over mts. land exceptionally
 difficult to survey, 126.21 chs.

 From this last described cor. I retrace
 South, bet. secs. 29 & 30, of T.17 N.R.4 E. over mts. land
 40.04 Find cor. of secs. 29, 30, 31 & 32 of T.17 N.R.4 E. on line.
as desc. by the Surveyor General

 From this cor. I run, over mts. land,
 South, bet. secs. 31 & 32 of T. 17 N. R. 4 E.
 40.00 Find 1/4 sec. cor. bet. secs. 31 & 32 4 lks. E. of line .
 79.96 Find Standard cor. of secs. 31 & 32, of T.17 N.R. 4 E.
 7 lks. E. of line, which is a limestone firmly set in
 mound of stone, marked S.C. on N. with 5 grooves on E. &
 1 groove on W. faces. No bearings .
 Course of last mile S. 0° 03' E.
 Land mts. exc. difficult to survey, distance for last
 one and one-half miles 120.00 chs.

Dec. 11, 1907.

The W. bdy. of this Tp. is over a broken country, west of
 the Verde River, into which the canyons and gulches lead.
 The land is worthless for agricultural purposes, being a
 limestone conglomerate, supporting but little vegetation
 except scrub cedar, and palonegro.

Jose B. Wright
 U.S. Deputy Surveyor.

*Cases destroyed on
 page 1 - exp. Treats
 Hank Q.*

Re-survey of 4th Standard Parallel N. thro' R. 4 E. = 7.

*Survey notes book
Q. J. J.*

Dec. 12, 1907.
At 9h a.m., l.m.t., at the Std. cor. of secs. 31 & 32 of T. 17 N. R. 4 E., knowing from recent tests that my instrument is in satisfactory adjustment, I set off 23° 59' S. on the decl. arc and 34° 49' N. on the lat. arc and determine a true meridian with the solar, Thence I run,
West on true line on S. bdy. sec. 31,
Var. 15° E.

- 2.00 Over mts. land asc.
- 2.00 Top of mesa, brs. N. & S.
- 16.28 Intersect E. bdy. of T. 16 N. R. 3 E. at a point 9.12 chs. S. of cor. of secs. 1 & 12. at which point I Set a limestone 15x12x6 ins. 10 ins. in the ground for closing cor. of Tps. 16 N. Rs. 3 & 4 E., marked C.C. on S. with 6 grooves on S., E., & W. faces, and raise amount of stone 3 ft. base 2 ft. high S. of cor. from which, a palo-negro tree 6 ins. diam. brs. S. 52 1/2° W. 38 lks. dist. marked T. 16 N. R. 3 E. S. 12 C.C.B.T.
A cedar tree 8 ins. diam. brs. S. 21 1/2° E. 99 lks. dist. marked T. 16 N. R. 4 E. S. 7 C.C.B.T.
- 30.00 Gulch, 10 lks. wide, course S.
- 40.20 Find old Std. 1/4 sec. cor. on line, which is a limestone 20x12x8 ins. set in ground and marked & witnessed as described by the Surveyor General. I rebuild the mound of stone 2 ft. base 1 1/2 ft. high N. of cor. Thence desc. grad. through dense palonegro & cedar.
- 65.60 Gulch 20 lks. wide, course S. asc. steep.
- 73.00 Top of mesa.
- 80.20 Old road, brs. N.E. & S.W.
- 80.50 Find old Standard cor. of Tps. 17 N. Rs. 3 & 4 E. on line which is a limestone 14 x 14 x 12 ins. set in ground and marked as described by the Surveyor General. I rebuild the mound of stone 3 ft. base 2 ft. high N. of cor.
Land mts. Soil, 3rd & 4th rate, stony, gravelly.
Timber, cedar. Undergrowth, palonegro & dense cedar.
Mts. land exc. difficult to survey, 80.50 chs.

Re-survey 4th Standard Parallel North thro' Range 3 East.

From the Std. cor. of Tps. 17 N. Rs. 3 & 4 E. as just desc re-established and described by me I run,
West, on true line on S. bdy. sec. 36.
Var. 15° E.

*J. J. C. C.
see page 1 - 100
notes book Q.*

- 15.42 Over mts. land desc. through dense cedar & palo-negro. Find cor. of secs. 1, 2, 11 & 12 of T. 16 N. R. 3 E. 9.20 chs. N. 0° 12' W., heretofore described.
I build md. of stone 2 ft. base 1 1/2 ft. high at point of intersection.
- 30.00 Gulch, 30 lks. wide, course S.W. along S. slope. Difference between measurements of 40.00 chs. by two sets of chainmen is 8 lks.; position of middle point,
By first set, 40.04
By second set, 39.96, the mean of which is
- 40.00 Set a limestone 20x10x8 ins. 15 ins. in the ground for Std. 1/4 sec. cor. marked S.C. 1/4 on N. face and raise a mound of stone 2 ft. base 1 1/2 ft. high N. of cor. from which,
A cedar tree 12 ins. diam. brs. N. 9° W. 150 lks. dist. marked S.C. 1/4 S. 36 B.T.
No other bearings available.
- 41.00 Gulch, 20 lks. wide, course, S.E. asc.
- 41.50 Find old Std. 1/4 sec. cor. 1 ch. S. of line, which I destroy.
- 48.00 Top of ridge, brs. N. & S. desc.
- 69.50 Dry wash, 10 lks. wide, course S.W. asc. Difference bet. measurements of 80.00 chs. by two sets of chainmen is 14 lks.; position of middle point,
By first set, 80.07 chs.
By second set, 79.93 chs., the mean of which is
- 80.00 Set a limestone 20x12x6 ins. 15 ins. in the ground for

8. Re-survey of 4th Standard Parallel North thro' Range 3 East.

Chains	Description
	Std. cor. of secs. 35 & 36 marked S.C. on N. with 1 groove on E. & 5 grooves on W. faces, and raise a mound of stone 2 ft. base 1 1/2 ft. high N. of cor. from which, A cedar tree 12 ins. diam. brs. N. 70° E. 82 lks. dist. marked T. 17 N. R. 3 E. S. 36 S.C. B.T. No other bearings available. Pits impracticable. Land mts. Soil, 3rd & 4th rate, stony gravelly. Timber, scattering cedar. Undergrowth, dense palonegro. Mountainous land exc. difficult to survey, 80.00 chs.
	<u>West, on S. bdy. sec. 35.</u> Over mountainous land desc. grad. thro' dense palonegro.
2.05	Find old std. cor. of secs. 35 & 36 82 lks. S. of line, which I destroy.
15.05	Intersect line bet. secs. 10 & 11 of T. 16 N. R. 3 E. at a pt. 9.08 chs. S. of cor. of secs. 2, 3, 10, & 11, of T. 16 N. R. 3 E. I leave mound of stone at this point. Difference bet. measurements of 40.00 chs. by two sets of chainmen is 6 lks.; position of middle point, By first set, 39.97, chs. By second set 40.03 chs., the mean of which is
40.00	Set a limestone 20x12x4 ins. 15 ins. in the ground for std. 1/4 sec. cor. marked SC 1/4 on N. face and raise a mound of stone 2 ft. base 1 1/2 ft. high N. of cor. No bearings available, Pits imprac.
42.37	Find old Std. 1/4 sec. cor. 97 lks. S. of line, which I destroy.
62.00	Leave mesa, & desc. along N. slope. Difference bet. measurements of 80 chs. by two sets of chainmen is 10 lks., position of middle point, By first set 80.05 chs. By second set 79.95 chs., the mean of which is
80.00	Set a limestone 24x15x4 ins. 18 ins. in the ground for Std. cor. of secs. 34 & 35, marked with 2 grooves on E. & 4 grooves on W. faces & S.C. on N. face and raise a mound of stone 2 ft. base 1 1/2 ft. high N. of cor. No bearings available. Pits imprac. Land mts. Soil, Stony, 3rd & 4th rate. Timber, scattering cedar. Undergrowth, dense palonegro. Mountainous land exc. difficult to survey, 80.00 chs.
	<u>West on S. bdy. sec. 34.</u> Over mts. land asc.
3.00	Find old Std. cor. of sec. 34 & 35 150 lks. S., which I destroy.
9.00	Top of mesa, brs. N. & S.
12.50	Leave mesa & desc.
14.90	Intersect line bet. sec. 9 & 10 of T. 16 N. R. 3 E. at point 9.39 chs. S. of the cor. of secs. 3, 4, 9 & 10, of T. 16 N. R. 3 E. I build mound of stone at this point.
19.00	Main wash, 50 lks. wide, course S.W. asc.
33.00	Trail, brs. N.W. & S.E. Difference bet. measurements of 40.00 chs. by two sets of chainmen is 12 lks.; position of middle point, By first set, 39.94, chs. By second set, 40.06 chs. the mean of which is
40.00	Set a limestone 15x10x6 ins. 10 ins. in the ground for Std. 1/4 sec. cor. marked S.C. 1/4 on N. face and raise a md. of stone 2 ft. base 1 1/2 ft. high N. of cor. from which, A palonegro 12 ins. diam. brs. N. 89° W. 140 lks. dist., marked S.C. 1/4 S. 34 B.T. No other bearings available.
43.21	Find old Std. 1/4 sec. cor. 1 ch. S. of line, which I destroy.
52.00	Leave mesa & desc. Difference bet. measurements of 80 chs. by two sets of chainmen is 12 lks., position of middle point, By first set 80.06 chs., by second set 79.94 chs. the mean is
80.00	Set a sandstone 20x12x4 ins. 15 ins. in the ground for Std. cor. of secs. 33 & 34, marked S.C. on N. with 3 grooves on E. & W. faces & raise a md. of stone 2 ft. base 1 1/2 ft. high North of cor. No bearings available, pits imprac. Land mts. Soil, 3rd & 4th rate? Stony. Timber scattering cedar. Undergrowth dense palonegro & cedar. Mts. land exc. difficult to survey 80.00 chs.

*For C.C. see map
refer page 2.
hook @*

*For C.C. see
ref. notes here
attached, page 1*

*Blank line -
see ref. notes, line
attached, page 1*

Blank line, see page 1, page notes, and attached

Chains At this last described cor. at 11h, 54m, a.m., l.m.t., I set off 23° 01' S. on the decl. arc and observe the sun on the mer. The resulting lat. is 34° 49' N. Thence I run,
 West, on S. bdy. sec. 33,
 Over rolling land, desc. grad. across valley of Verde River.
 3.60 Fence, brs. W.N.W. & E.S.E. Search for old cor. None found.
 9.50 Corral fence, brs. N. & S.
 14.00 Ranch house of O.J. Ames brs. S. 1 ch.
 14.80 Old cor. of secs. 4, 5, 8, & 9, brs. N. 1° 17' E. 19.25 chs.
 21.53, Main wash, 30 lks. wide, course S.
 29.00 Irrigation ditch, brs. S.E. Enter dense mesquite.
 29.50 Fence, brs. N. & S.
 29.60 Road, brs. N. & S.
 Difference of measurement of 40 chs. by 2 sets of chainmen is 8 lks., position of middle point,
 By 1st set 40.04 chs., By 2nd set 39.96, the mean of which is
 40.00 Set a sandstone 15 1/2 x 6 x 6 ins. 10 ins. in the ground for Std. 1/4 sec. cor. marked S.C. 1/4 on N. face and raise a mound of stone 2 ft. base 1 1/2 ft. high N. of cor. from which, a willow tree 10 ins. diam. brs. N. 43° E. 85 lks. dist., marked S.C. 1/4 S. 33 B.T. No other bearings avail.
 No trace of orig. cor. found after diligent search.
 50.50 Verde River 2 chs. wide, course S.E.
 51.50 Asc. abrupt over bluff over mts. land
 57.85 House of C.P. Dunham brs. N. 31 chs.
 58.00 Top of mesa, and over broken land along S. slope of ridge. Difference bet. measurements of 80 chs. by 2 sets of chainmen is 14 lks., position of middle point,
 By 1st set, 79.93 chs., By 2nd set 80.07 chs. the mean of which is
 80.00 Set a limestone 15 x 10 x 4 ins. 10 ins. in the ground for Std. cor. of secs. 32 & 33, marked S.C. on N. with 4 grooves on E. & 2 grooves on W. faces & raise a mound of stone 2 ft. base 1 1/2 ft. high N. of cor. No bearings available. Pits impracticable. No trace of old cor. found.
 Land mts. Soil, 2nd & 3rd rate, stony.
 Timber, cottonwood & mesquite. Undergrowth, mesquite.
 Mts. or rolling land covered with dense undergrowth 80.00 chs.

 West on S. bdy. sec. 32.
 Over mts. land
 9.50 Wash 20 lks. wide, course S. and over broken ground. Difference bet. measurements of 40 chs. by 2 sets of chainmen is 8 lks., position of middle point, by 1st set 39.96 chs., by 2nd set 40.04 chs., the mean of which is
 40.00 Set a limestone 24 x 15 x 6 ins. 18 ins. in the ground for Std. 1/4 sec. cor. marked S.C. 1/4 on N. face and raise a mound of stone 2 ft. base 1 1/2 ft. high N. of cor. whence A palonegro tree 5 ins. diam. brs. N. 15° E. 47 lks. dist. marked S.C. 1/4 S. 32 B.T. No other trees available.
 No trace of old cor. found after diligent search. asc.
 50.00 Point of long ridge, brs. E.N.E. desc. steep.
 60.00 Canyon 50 lks. wide, course E.N.E. asc. steep. Difference bet. measurements of 80 chs. by 2 sets of chainmen is 12 lks., position of middle point, By 1st set, 80.06 chs., by 2nd set 79.94 chs., the mean of which is
 80.00 Set a limestone 48 x 10 x 10 ins. on bed rock in md. of stone for Std. cor. of sec. 31 & 32, marked with S.C. on N. 1 groove on W. & 5 grooves on E. faces and raise a md. of stone 2 ft. base 1 1/2 ft. high N. of cor. from which, A palonegro tree 6 ins. diam. brs. N. 85° E. 18 lks. dist., marked T. 17 N.R. 3 E. S.C. S. 32 B.T.
 No other bearings available. Pits imprac.
 Land mts. Soil, stony, 3rd & 4th rate.
 No timber. Undergrowth, dense, palonegro, & scattering cedar.
 Mts. land exc. difficult to survey, 80.00 chs.

10. Re-survey of 4th Standard Parallel North thro' R. 3 East.

Chains

Dec. 13, 1907 at 8h a.m., 1.m.t., at the Std. cor. of sec s. 31 & 32, above described, I set off 23° 02' S. on the decl. arc and 34° 49' N. on the lat. arc and determine a true meridian with the solar. Thence I run, Var. 15° E.

West on S. bdy. sec. 31.
Over mts. land, along S. slope.

13.45

Intersect W. bdy. of T. 16 N. R. 3 E. as surveyed by me Dec. 10, 1907, under this contract, at a point 33.25 chs. N. of the 1/4 sec. cor. on W. bdy. of sec. 7, at which point, I set a limestone 30x12x4 ins. 24 ins. in the ground for closing cor. of Tps. 16 N. Rs. 2 & 3 E. marked marked C.C. on S. with 6 grooves, on S., E., & W. faces and and raise a mound of stone 4 ft. base 3 1/2 ft. high S. of cor. from which,

A cedar tree 6 ins. diam. brs. S. 57° W. 58 lks. dist. marked T. 16 N. R. 2 E. S. 12 C.C.B.T.

No other bearings available. Pits impracticable. I destroy all corners. on W. bdy. of T. 16 N. R. 3 E. N. of this point and continue West along 4th Sts. Par. N. desc. steep.

30:00

Canyon 50 lks. wide, brs. E.S.E. asc. steep. Difference bet. measurements of 40 chs. by 2 sets of chainmen is 10 lks. position of middle point, by 1st set, 40.05 chs. by 2nd set, 39.95 chs., the mean of which is

40.00

Set a limestone 24x10x8 ins. 18 ins. in the ground for Std. 1/4 sec. cor. marked S.C. 1/4 on N. face and raise a md. of stone 2 ft. base 1 1/2 ft. high N. of cor.

No bearings available. Pits impracticable. No old cor. found.

68.00

Top of ridge, brs. S.E., desc.

84.50

Find old std. cor. of Tps. 17 N. Rs. 2 & 3 E. 80 lks. S. of line marked and witnessed as described by the Surveyor General.

Set a malpais stone Stone 30x15x10 ins. 24 ins. in the ground for Std. Closing cor. of T. 17 N. R. 3 E. marked C.C. on E. face with 6 grooves on N. & E. faces & S.C. on N. face and raise a mound of stone 2 ft. base 2 1/2 ft. high E. of cor. No bearings available. Pits imprac.

I change the markings of old std. cor. to refer to T. 17 N. R. 2 E. only.

Land mts. Soil, stony, 3rd & 4th rate.

Timber scattering pine, cedar, and juniper.

Undergrowth, paloverde, ocotillo.

Mountainous land exc. difficult to survey, 84.50 chs.

Here I discontinue the re-survey of the 4th std. Par. N. Dec. 13, 1907.

This line passes over mountainous land broken by deep canyons leading from the mesas on each side of the Verde River. The land in the Valley of the Verde River for about 1/2 mile, is a fine sandy loam, very rich and productive. On all other parts of the line the land is worthless, no water being found anywhere except in the Verde River, which at this time of the year has a flow of about 250 cubic feet per sec. average.

No notary available without loss of time and expense; therefore, I administer oaths of assistants.

Jesse T. Wright
J.S. Deputy Surveyor

see page 3 this book
W. H. R. 7- 7167 R 33

see my notes
attached page 71

LIST OF NAMES.

A list of the names of the individuals employed by

Jessie B Wright

a, United States Deputy Surveyor, to assist in running, measuring, and

marking the lines and corners described in the foregoing field notes of the survey of *Barren*

of T. 16 & 17 N R 3 E G & S P 31 Mer.

showing the respective capacities in which they acted:

Leon G. Moore } Chainman.

Albert M. Crockett } Chainman.

Frank E. Earle } ~~Moundman.~~

Harold S. Crain } ~~Moundman.~~

Arthur G. Wood } Moundman.

Frank D. Ames } Axman.

~~Axman.~~

Eugene D. Carter } Flagman.

FINAL OATH OF ASSISTANTS.

We hereby certify that we assisted

Jessie B Wright

a, United States Deputy Surveyor, in surveying all

those parts or portions of the *Barren* of *T. 16 & 17 N. R. 3 E*

of the *Gila and*

Salt River Branch meridian, *Territory* of *Arizona*, which are represented in the foregoing field notes as having been surveyed by him and under his direction; and that said survey has been in all respects, to the best of our knowledge and belief, well and faithfully surveyed, and the corner monuments established, according to the instructions furnished by the United States Surveyor

General for *Arizona*

Leon G. Moore ✓ } Chainman.

Frank E. Earle ✓ } Chainman.

Albert M. Crockett ✓ } Chainman.

Harold S. Crain ✓ } Moundman.

Arthur G. Wood ✓ } ~~Moundman.~~

~~Moundman.~~

~~Axman.~~

Frank D. Ames ✓ } Axman.

Eugene D. Carter ✓ } Flagman.

Subscribed and sworn to before me this *26th*

day of *December*, 190*7*

M. Maude Harrison



My Commission Expires
Jan 11, 1911

Notary Public

1358
BOOK 2143

FINAL OATH OF UNITED STATES DEPUTY SURVEYOR.

I, Jesse B Wright, United States Deputy Surveyor, do solemnly swear that, in pursuance of a contract received from Frank S. Ingalls United States Surveyor General for Arizona, bearing date of the 15th day of April, 1907, I have well, faithfully, and truly, in my own proper person, and in strict conformity with the instructions furnished by the United States Surveyor General for Arizona, the Manual of Surveying Instructions, and the laws of the United States, surveyed all those parts or portions of the boundaries of T. 16 & 17 N R. 3. E.

of the Gila Salt River Basin meridian, in the Territory of Arizona, which are represented in the foregoing field notes as having been surveyed by me, and under my direction; and I do further solemnly swear that all the corners of said survey have been established and perpetuated in strict accordance with the Manual of Surveying Instructions, and the special written instructions of the United States Surveyor General for Arizona and in the specific manner described in the field notes, and that the foregoing are the original field notes of such survey.

Jesse B Wright
United States Deputy Surveyor.

Subscribed by said Jesse B Wright, and sworn to before me }
this 27th day of December, 1907

W. H. Murray



U. S. Commissioner, First Judicial District,
Territory of ARIZONA, residing at Tucson.

APPROVAL.

OFFICE OF THE UNITED STATES SURVEYOR GENERAL,

Phoenix, Ariz. Dept. 16, 1907

The foregoing field notes of the survey of the fractional West end a portion of the South boundary of T. 16 N. R. 3 E. and resurvey of the 4th St. for N. through T. 3 E. and portion of T. 2. Gila and Salt River Basin and Meridian, Arizona

executed by Jesse B Wright, U.S. Dep. Sur. under his contract No. 145, dated April 15, 1907, having been critically examined, and the necessary corrections and explanations made, the said field notes, and the surveys they describe, are hereby approved.

United States Surveyor General.

I certify that the foregoing transcript of the field notes of the above-described surveys in _____, has been correctly copied from the original notes on file in this office.

United States Surveyor General.

Checked Dec 6/08
G.T.
U.S. 11.13
59

BOOK 2143

Supplemental
FIELD NOTES

OF THE SURVEY OF THE

47th Standard Par. N. thro Range 3 East

Of the *Gila Salt River Base* Meridian,

Arizona

AS SURVEYED BY

Joseph B. Wright, United States Deputy Surveyor,

Under his Contract No. *145*, dated *April 15th*, 1907

Survey commenced *Dec 9*, 1908

Survey completed *Dec 10*, 1908

Grover M Martin Chairman

Henry Davis "

Frank D Ames Foreman

675

BOOK 2143
INDEX DIAGRAM.

Township 17 N., Range 3 E.

6	5	4	3	2	1
7	8	9	10	11	12
18	17	16	15	14	13
19	20	21	22	23	24
30	29	28	27	26	25
31	³² South ³³ Standard ³⁴ Parallel ³⁵ North ³⁶				

Meanders Page.....

#62

PRELIMINARY OATHS OF ASSISTANTS.

BOOK 2143

WE, Grayson M Martin and Henry Davis
do solemnly swear that we will well and faithfully execute the duties of chainmen; that we will level the chain upon even and uneven ground, and plumb the tally pins, either by sticking or dropping the same; that we will report the true distances to all notable objects, and the true lengths of all lines that we assist in measuring, to the best of our skill and ability, and in accordance with instructions given us, in the survey of

lines covered in Supplemental field notes of 4th Sta Pa 22
Trs R 3 E. and supplemental notes T 17 N R 3 E
Grayson M Martin, Chainman.

Henry Davis, Chainman.

Subscribed and sworn to before me this 9th
day of Dec, 1908



Joseph B Wright
U. S. Deputy Surveyor

WE, _____ and _____
do solemnly swear that we will well and truly perform the duties of moundmen in the establishment of corners, according to the instructions given us, to the best of our skill and ability, in the survey of

_____, Moundman.

_____, Moundman.

Subscribed and sworn to before me this _____
day of _____, 190 _____



WE, _____ and _____
do solemnly swear that we will well and truly perform the duties of axmen in the establishment of corners and other duties, according to instructions given us, to the best of our skill and ability, in the survey of

_____, Axman.

_____, Axman.

Subscribed and sworn to before me this _____
day of _____, 190 _____



I, Frank D Ames, do solemnly swear that I will well and truly perform the duties of flagman according to instructions given me, to the best of my skill and ability, in the survey of lines covered in Supplemental field notes of 4th Sta Pa 22
Trs R 3 E. and " " " " " " T 17 N R 3 E
Frank D Ames, Flagman.

Subscribed and sworn to before me this 9th
day of Dec, 1908



Joseph B Wright
U. S. Deputy Surveyor

Chains Surveys begun Dec. 9, 1908, and executed with a W. & L.E. Gurley light mountain transit, special make, unnumbered. This instrument is provided with two double verniers, each reading to 1' of arc, and placed opposite to each other. The latitude and declination arcs each reading by double verniers to 30" of arc. Burts solar attachment. I test the levels and line of collimation of my instrument and finding same satisfactory, at the Std. Cor. of secs. 34 & 35 of T. 17 N. R. 3 E. as re-established by me, at 11.52 a.m. I set off 22° 50' S. on the decl. arc and observe the sun on the meridian. The resulting lat. is 34° 48' 30" N. Having found that the 4th Std. Par. N. through this Tp. is 1 mile 9.30 chs. S. of the theoretical location as portrayed by the plats furnished me by the Surveyor General with my original special instructions under this contract, and knowing by repeated tests that my instrument gives the correct latitude to within 15" of arc, in my surveys in this locality I use my observed latitude. At this last described cor. at 3:00 P.M. l.m.t., I set off 22° 50' S. on the decl. arc. and my observed lat. 34° 48' 30" N. on the lat. arc. and determine a true meridian with the solar and mark a point in the meridian thus determined by a tack in a stake driven in the ground 6 chs. N. of my station. Dec. 10, at 2h 09m a.m., l.m.t., I observe polaris at W. Elong. in accordance with instructions in the manual and mark a point in the line thus determined by a cross on a fixed stone 6 chs. N. of my station. At 8h 50m a.m., l.m.t., I set off the azimuth of polaris 1° 26' 30" to the East and mark the meridian thus determined by a tack in the stake 6 chs. N. of my station. This mer. is 1/4" in. E. of the mer. determined by the solar on preceding evening. At 9:00 a.m., l.m.t., I set off 22° 55' 30" S. on the decl. arc. and 34° 48' 30" N. on the lat. arc and determine a meridian with the solar, which meridian coincides with that determined by polaris observation. Hence I conclude that the adjustments of my instrument are satisfactory. From this last described cor. I run, West, on 4th Std. Par. N. along S. bdy. sec. 34. Taking the mean of 2 measurements of 14.89 and 14.91 chs. at 14.90 Intersect E. bdy. of sec. 9 of T. 16 N. R. 3 E. at point 9.30 chs. S. 0° 12' E. from the N.E. cor. of sec. 9 of T. 16 N. R. 3 E. This intersection being determined by running a blank line from 1/4 sec. cor. bet. secs. 9 & 10 to the cor. of 3, 4, 9 & 10. At point of intersection, I set a limestone 24 x 12 x 6 ins. 18 ins. in the ground for Std. closing cor. of sec. 34, marked C.C. on E., S.C. on N. and S. 9 on W. faces, and raise a mound of stone 2 ft. base 1 1/2 ft. high E. of cor. from which A cedar tree 12 ins. diam. brs. N. 89° E. 74 lks. dist. marked T. 17 N. R. 3 E. S. 34 C.C.B.T. No other bearings available.

I continue my line West, and obliterate the markings on Std. 1/4 cor. on S. bdy. sec. 34, and on the cor. of secs. 33 & 34, and also on the 1/4 sec. cor. on S. bdy. sec. 33, in accordance with the supplemental special instructions issued me by the Surveyor General. From the Std. 1/4 sec. cor. on S. bdy. sec. 33 I run West. Taking the mean of two measurements of 14.98 & 15.02 chs. at 15.00 Intersect the meridional line, through sec. 8 of T. 16 N. R. 3 E. at point S. 0° 30' W. 20.90 chs. from the orig. 1/4 sec. cor. on N. bdy. sec. 8, the alinement of this meridional line being determined by taking the true bearing of the line between two flags, one at the 1/4 cor. on N. line

See orig. notes
page 8

See orig. notes
page 9

SUPPLEMENTAL FIELD NOTES '4th Std. Par. N. Thro' RANGE 3 E.

Chains

of sec. 8 and one at 1/4 cor. on S. line of sec. 8, of T.15 N. R. 3 E. The distance from point of intersection to 1/4 sec. cor. on N. line of sec. 8 is 20.90 chs.

At point of intersection I Mark a cross on a limestone bldr. in place 2'ft. x 2 ft. x 1 ft. above ground, and also mark C.C. on W. of cross S.C. on N. of cross and S.8 on E. of cross, and raise a mound of stone 2 ft. base 1 1/2 ft. high W. of cor. No bearings available.*

Line as measured 20.90 chs. to 1/4 sec. cor. on N. line of sec. 8 is through dense mesquite timber and undergrowth, exceptionally difficult to survey.

From 1/4 sec. cor. on S. bdy. sec. 31 as described in my orig. notes, I run West, along S. bdy. secs. 31

40.00

Mark cross on malpais bldr. in place 2x2 ft. x 1 ft. above ground for std. cor. of Ts. 17 N. Rs. 2, & 3 E. with 6 grooves on E., W. & N. of cross. & S.C. on N. of cross and raise a md. of stone 3 ft. base 2 ft. high N. of cor. from which, A cedar tree 18 ins. diam. brs. N. 39 3/4° W. 64 lks. dist. marked T.17 N. R. 2 E. S. 36 B.T.

No other bearings available.

44.50

The closing cor. as described in my original notes, which I destroy.

Dec. 10, 1908.

Jesse B. Wright
U.S. Deputy Surveyor.

No notary available without loss of time and expense; therefore I administer oaths of assistants.

or. c. c. see my notes page 10.

FINAL OATHS OF DEPUTY SURVEYOR AND HIS ASSISTANTS.

88

BOOK 2143

LIST OF NAMES.

A list of the names of the individuals employed by

Jesse B. Wright

United States Deputy Surveyor, to assist in running, measuring, and

marking the lines and corners described in the foregoing field notes of the survey of *lines cornered in supplemental field notes 47th Std Par. N. thro R. 3 E and " " " " " T 17 N R 3 E* showing the respective capacities in which they acted:

Grayson M. Martin, Chainman.

Henry Davis, Chainman.

Moundman.

Moundman.

Axman.

Axman.

Frank D. Ames, Flagman.

FINAL OATH OF ASSISTANTS.

We hereby certify that we assisted

Jesse B. Wright

United States Deputy Surveyor, in surveying all

those parts or portions of the *4th Std Par. N. thro R. 3 E. as cornered in supplemental field notes and lines " " " " " of S. 17 N R 3 E* of the *Great*

Salt River meridian, *Ter* of *Arizona*, which are represented in the foregoing field notes as having been surveyed by him and under his direction; and that said survey has been in all respects, to the best of our knowledge and belief, well and faithfully surveyed, and the corner monuments established, according to the instructions furnished by the United States Surveyor

General for

Arizona
Grayson M. Martin, Chainman.

Henry Davis, Chainman.

Moundman.

Moundman.

Axman.

Axman.

Frank D. Ames, Flagman.

Subscribed and sworn to before me this *12th*

day of *Dec*, 1908

Jesse B. Wright
U.S. Deputy Surveyor



FINAL OATH OF UNITED STATES DEPUTY SURVEYOR.

I, Jesse B. Wright, United States Deputy Surveyor, do solemnly swear that, in pursuance of a contract received from Frank S. Engall, United States Surveyor General for Arizona, bearing date of the 14th day of April, 1907, I have well, faithfully, and truly, in my own proper person, and in strict conformity with the instructions furnished by the United States Surveyor General for Arizona, the Manual of Surveying Instructions, and the laws of the United States, surveyed all those parts or portions of The 4th St. Par. N. thru R. 3. E. as corner in supplemental field notes and of T. 17 N R 3 E as corner in supplemental field notes of the Gila and Salt River meridian, in the Terr. of Arizona, which are represented in the foregoing field notes as having been surveyed by me, and under my direction; and I do further solemnly swear that all the corners of said survey have been established and perpetuated in strict accordance with the Manual of Surveying Instructions, and the special written instructions of the United States Surveyor General for Arizona and in the specific manner described in the field notes, and that the foregoing are the original field notes of such survey.

Jesse B. Wright
United States Deputy Surveyor.

Subscribed by said Jesse B. Wright, and sworn to before me
this 16th day of December, 1908

W. L. Connor



APPROVAL.

OFFICE OF THE UNITED STATES SURVEYOR GENERAL,

The foregoing ^{copy} field notes of the survey of the 4th St. Par. N. thru R. 3 E, Gila and Salt River Bas. and Meridian, Arizona ^{re} Florida Ariz. Sept. 16, 1909

executed by Jesse B. Wright, U.S. Dep. Sur.
under his contract No. 145, dated April 15, 1907, having been critically examined, and the necessary corrections and explanations made, the said field notes, and the surveys they describe, are hereby approved.

Frank S. Engall
United States Surveyor General.

I certify that the foregoing transcript of the field notes of the above-described surveys in _____, has been correctly copied from the original notes on file in this office.

United States Surveyor General.