

Book 6

E.O.

67

4-679.

Accepted, Letter ^{JAN 3-1908} 2 - Mar. 23-1910

~~64726~~

2144

BOOK 2144

FIELD NOTES

2144

OF THE SURVEY OF THE

2144

*Subdivision and Re-survey
S 16 & ~~7~~ N R 3 E.*

2144

Of the *Delaware Salt River* Base⁴ of Meridian,

Arizona

AS SURVEYED BY

Jesse B Wright

, United States Deputy Surveyor,

Under his Contract No. *175*, dated *April 15*

1907

Survey commenced

December 13th

1907

Survey completed

December 16th

1907

6-161

2144

2144

2144

68
1A

NAMES AND DUTIES OF ASSISTANTS.

Leon J. Moore Chairman
Albert M. Crockett "
Harold G. Crain "
Arthur G. Wood Member
Frank E. Ames Wagoner
Eugene D. Carter Foreman

69
13

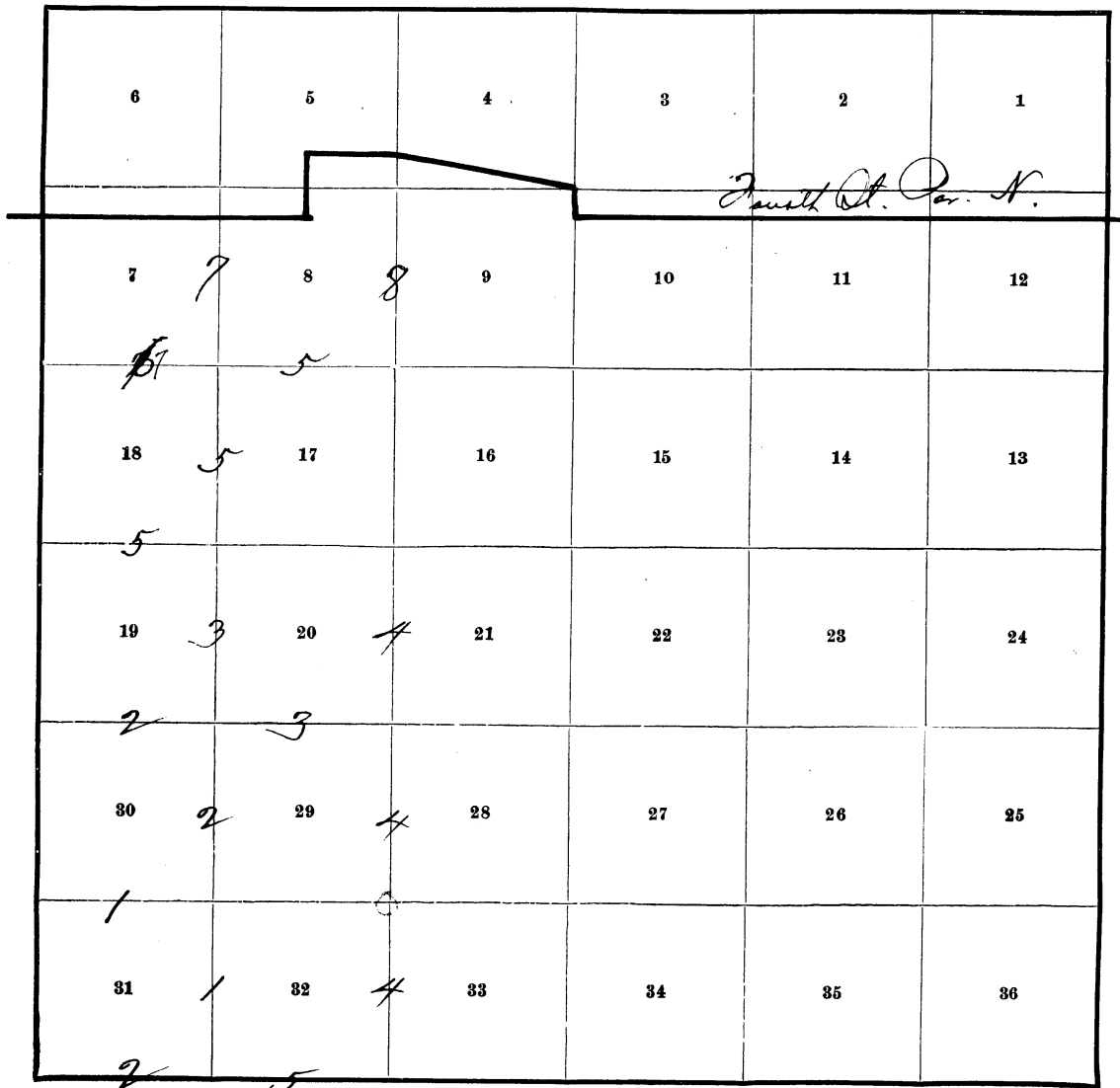
Book No. 2144

BOOK 2144

INDEX DIAGRAM.

(See index in Sup Notes)

Township 16 N, Range 3 E



Fourth St. Par. N.

Meanders Page.....

7010

PRELIMINARY OATHS OF ASSISTANTS.

WE, Leon G. Moore, Albert M. Crockett and Harold G. Crain
do solemnly swear that we will well and faithfully execute the duties of chainmen; that we will level the chain over even and uneven ground, and plumb the tally pins, either by sticking or dropping the same; that we will report the true distances to all notable objects, and the true lengths of all lines that we assist in measuring, to the best of our skill and ability, and in accordance with instructions given us, in the survey of Subdivision and Re-survey in T. 16 & 17 N. R. 3 E.

Leon G. Moore, Chainman.
Albert M. Crockett, Chainman.
Harold G. Crain "

Subscribed and sworn to before me this 8th
day of Dec, 1907



Jesse B. Wright
U. S. Dep. Surv.

I, Arthur G. Wood and
do solemnly swear that we will well and truly perform the duties of moundmen in the establishment of corners, according to the instructions given us, to the best of our skill and ability, in the survey of Subd & Re-survey T. 16 & 17 N. R. 3 E. G. & P. B. T. M.

Arthur G. Wood, Moundman.
_____, Moundman.

Subscribed and sworn to before me this 8th
day of Dec, 1907



Jesse B. Wright
U. S. Dep. Surv.

I, Frank D. Ames and
do solemnly swear that we will well and truly perform the duties of axmen in the establishment of corners and other duties, according to instructions given us, to the best of our skill and ability, in the survey of Subd & Re-survey T. 16 & 17 N. R. 3 E. G. & P. B. T. M.

Frank D. Ames, Axman.
_____, Axman.

Subscribed and sworn to before me this 8th
day of Dec, 1907



Jesse B. Wright
U. S. Dep. Surv.

I, Eugene D. Carter, do solemnly swear that I will well and truly perform the duties of flagman according to instructions given me, to the best of my skill and ability, in the survey of Subd & Re-survey T. 16 & 17 N. R. 3 E. G. & P. B. T. M.

Eugene D. Carter, Flagman.

Subscribed and sworn to before me this 8th
day of Dec, 1907



Jesse B. Wright
U. S. Dep. Surv.

chains

Dec. 13, 1907.

At the cor. of secs. 29, 30, 31 and 32, Tp. 16 N., R. 3 E., I begin the subdivision of this township.

This cor. is

A granite stone 14 x 14 x 10 ins., set in the ground, marked and witnessed as described by the Surveyor General.

At this cor. at 3:00 p. m., l.m.t., I set off 23° 6' S. on the decl. arc, and 34° 44' N. on the lat. arc, and determine a true meridian with the solar. I mark a point in the meridian thus determined by a tack in a stake, set 8 chs. N. of my station.

Dec. 14, 1907: At 1:50 a. m. l.m.t., I observe Polaris at the Western elongation, in accordance with the instructions given in the Manuel, and turn off the azimuth of Polaris 1° 27' to the E., and mark a point in the meridian, which coincides with the meridian determined by the solar.

At 8:00 a. m., l.m.t., I set off 23° 7' S. on the decl. arc., 34° 44' on the lat. arc, and determine a meridian with the solar, which meridian coincides with the meridian given by that of Polaris, and from the cor. above described, I run,

West on a random line bet. secs. 30 and 31.

40.00 Set temp. 1/4 sec. cor.

78.65 Intersect W. bdy. 80 lks. N. of cor. to secs. 30, 31, 25 and 36.

This falling being out of limits, from the cor. of secs. 25, 30, 31 and 36, I run,

East on a true line, bet. secs. 30 and 31,

Var. 15° E.

Over mountainous land, descending.

29.50 Canon, 30 lks. wide, brs. ENE.

32.00 Same canon, brs. ESE.

38.65 Set a limestone, 20 x 6 x 6 ins. 15 ins in the ground, for 1/4 sec. cor. bet. secs. 30 and 31, marked 1/4 on N. face, and raise a mound of stone 2 ft. base, 1 1/2 ft. high, N. of cor., whence

A cedar, 10 ins. diam., brs. N. 83° E., 170 lks. dist., marked 1/4 S 30 B T

No other bearing available. Pits impracticable.

I search for old cor. as described by the Surveyor General, and find no trace of it.

39.50 Same canon as above, 40 lks. wide, brs. ENE.

78.65 At point 80 lks. S. of cor. of secs. 29 and 30, 31 and 32, which cor. I change to refer to secs. 29 and 32 only.

I set a limestone 15 x 8 x 6 ins. 12 ins in the ground, for closing cor. of secs. 30 and 31, marked CC on W. face, with 1 notch on S. face, with mound of stone 2 ft. base, 1 1/2 ft. high, W. of cor.

No bearings available. Pits impracticable.

Land, mountainous.

Soil, stony, 2d and 3d rate.

Timber, scattering cedar, undergrowth, cedar, scrub oak. mountainous land, 78.65 chs.

Sec. 31 not closing within limits:

From the old cor. of secs. 29, 30, and 32, I retrace, South bet. secs. 31 and 32,

Var. 15° E.

36.30 Dry wash, 60 lks. wide, course N. E.

40.30 Find old 1/4 sec. cor. 14 lks. W. of line marked and witnessed as described by the Surveyor General. True course is S. 0° 12' W.

80.70 Find old cor. of secs. 31 and 32, 15 lks west of line, which is a volcanic stone 26 x 6 x 10, set in the ground, marked and witnessed as described by the Surveyor General.

Land, rolling,

Soil, sandy and gravelly, 2d and 3d rate.

No timber.

Undergrowth, scattering sage brush and grease wood

Rolling land, 80.70 chs.

Retracements, connected with
Subdivision of T. 16 N., R. 3 E. Ctd.

chains.

- West on south bdy. sec. 31.
Var. 15° E.
- 20.25 Ascending gradually along line of fence.
End of fence. Begin steep ascent through dense cedar and scrub oak.
- 27.00 Top of ascent. Thence along S. slope of ridge.
- 40.20 Find old 1/4 sec. cor. bet. secs. 6 and 31, 10 lks. N. of line, hereinbefore described.
Land mountainous.
Soild, 3d rate stony.
Timber, scattering cedar.
Undergrowth, scrub oak and cedar.
Mountainous land, 40.20 chs.
True course is N. 89° 51' W.
-
- From the cot. of secs. of 29, 30, 31 and 32, which I change to refer to secs. 29 and 32 only.
I run,
North bet. secs. 29 and 30.
Var. 15° E.
- Descending gradually over rolling land.
- 3.00 Road, NNW.
- 10.00 Road, Jerome to Camp Verde, brs. E. and W.
- 12.50 Wash, 12 lks. wide, brs. ESE.
- 29.00 Another road, Jerome to Camp Verde, brs. NNW and SSE.
- 40.10 Find old md. of stone on line. There being no other evidence of cor. at this point,
I set a limestone 24 x 10 x 8 ins., 18 ins. in the ground, for 1/4 sec. cor., maked 1/4 on W. face, and raise a md of stone 2 ft. base, 1 1/2 ft. high, W. of cor.
No bearings available. Pits impracticable.
- 40.50 Road, Jerome to Cottonwood, ESE.
- 63.00 Road to Jerome from Verde river, ENE.
- 67.60 Wash, 20 lks. wide, brs. E.,
- 76.50 Wash, 30 lks. wide, brs. NE.
- 80.20 Find old md. of stone on line. There being no other evidence of cor. found at this point, on bed rock,
I set a post, 4 ins. x 5 ins. x 5 ft. long, in large mound of stone, for cor. of secs. 19, 20, 29 and 30, marked
T 16 N S 20 on NE face,
R 3 E S 29 on SE face,
S 30 on SW face, and
S 19 on NW face, with 2 notches on S. and 5 notches on E. faces, and raise a mound of stone 3 ft. base, 1 1/2 ft. high, W. of cor.
No bearings available. Pits impracticable.
- Land, rolling,
Soil, gravelly, 2d and 3d rate.
No timber.
Undergrowth, scattering greasewood and sage brush.
-
- Thence I run,
West on a random line bet. secs. 19 and 30.
Var. 15° E.
- 40.00 Set temp. 1/4 sec. cor.
- 78.60 Intersect W. bdy, 90 lks. N. of cor. of secs. 19, 24, 25 and 30.
This being out of limits, from the cor. of secs 19, 24, 25, and 30, on W. bdy,
I run,
East on a true line, bet secs. 19 and 30.
Var. 15° E.
- Over mountainous land, descending along N. slope of high ridge.
- 23.20 Road, Jerome to Sysamore, N. and S.
- 38.60 Marked a limestone in place, 20 x 20 x 6 ins above ground, with cross (x) at exact cor. point, and 1/4 on N. face, for 1/4 sec. cor. and raise a mound of stone

Retracements connected with
Subdivision of T. 16 N. R 3 E. Ctd. 3.

chains. 2 ft. base, 1 1/2 ft. high, N. of cor.
 No bearings available. Pits impracticable. asc. grad.
 53.00 Top of spur, slopes SE.
 78.60 At point 90 lks. S. of old cor. of secs. 19, 20, 29
 and 30, as re-established by me,
 I set a limestone, 15 x 8 x 4 ins., 12 ins. in the
 ground, for closing cor. of secs. 19 and 20, marked CC
 on W. face, with 2 grooves on S. face, and raise a mound
 of stone, 2 ft. base, 1 1/2 ft. high, W. of cor.
 No bearings available. Pits impracticable.
 I change the markings of old cor. to sec. 19, 20,
 29 and 30, to refer to secs. 20 and 29 only.
 Land, mountainous.
 Soil, stony, 2d and 3d rate.
 Timber, scattering cedar.
 Undergrowth, greasewood.
 Mountainous land, 78.60 chs.

Thence from old cor. I run,
 North bet. secs. 19 and 20,
 Var. 15° E.
 Over rolling land, descending gradually.
 40.00 No old cor. found. Set temp. 1/4 sec. cor.
 79.36 Find old md. of stone, 40 lks. West of line. This
 being the only evidence of cor. at this point,
 I set a limestone 20 x 10 x 6 ins., 15 ins. in the
 ground, for original cor. of secs. 17, 18, 19 and 20,
 marked with 3 notches on S. and 5 notches on E. edges,
 and raise a mound of stone 2 ft. base, 1 1/2 ft. high, W.
 of cor.
 No bearings available. Pits impracticable.
 Thence I run,
 S. 0° 17' E. on a true line, bet. secs. 19 and 20,
 Var. 15° E.
 Over rolling land,
 7.25 Road, Jerome to Sycamore, ENE.
 7.65 Telephone line, Jerome to ranch, ENE.
 19.35 Jerome Gulch, 2 chs. wide, ESE.
 39.68 Set a granite stone, 15 x 6 x 6 ins., 12 ins. in the
 ground, for 1/4 sec. cor., marked 1/4 on W. face, and
 raise a mound of stone 2 ft base, 1 1/2 ft. high, W. of cor.
 No bearings available. Pits impracticable.
 47.85 Wash, 20 lks. wide, brs. SE.
 79.36 Cor. of secs. 20 and 29, heretofore described.
 Land, heavily rolling.
 Soil, 3d rate, gravelly.
 No timber.
 Undergrowth, greasewood and sage brush. Dec. 14, 1907.

Dec. 15, 1907: At 8h, a.m., l.m.t., I set off 23° 10' S
 on the decl. arc and 34° 46' N. on the lat. arc and deter-
 mine a meridian with the solar.
 Thence I run,
 East on a random line, bet secs. 20 and 29.
 Over rolling land.
 40.05 Find old 1/4 sec. cor. 80 lks. N. marked and witnessed as
 desc. by the S.G. True course is N88° 51' E. 40.06 chs.
 50.00 Road SW. and NE. 57.00 Gulch course SE.
 80.10 Find old cor. of secs. 20, 21, 28 and 29, 156 lks. N.
 which I re-establish from old bearing tree, which is a
 Cedar, 12 ins. diam., bearing S. 67° E. 84 lks. dist,
 marked T 16 N R 3 E S 28 BT.
 From this tree I run,
 N. 67° W., 84 lks. as per the original field notes, and
 Set a limestone 24 x 10 x 6 ins., 18 ins. in the
 ground, for cor. of secs. 20, 21, 28 and 29, marked
 with 2 notches on S. and 4 notches on E. edges, and
 raise a mound of stone, 2 ft base, 1 1/2 ft. high, W. of
 cor. from which,

Retracements, connected with
Subdivisions of T. 16 N., R. 3 E. Ctd. 4.

chains.

A palo negro, 6 ins. diam., brs. S. 9° W., 47 lks. dist., marked T 16 N R 3 E S 29 B T.
No other bearings available. Pits impracticable.
True course and dist. last 1/2 mile is N. 88° 55' E, 40.06 chs.
Soil, 3d rate,
Land, rolling,
No timber.
Undergrowth, greasewood and palo negro.

From last re-established cor. to secs. 20, 21, 28 and 29
I run,
North bet. secs. 20 and 21,
Var. 15° E.

21.50 Over mountainous land.
40.25 Road, Jerome to Verde, E. and W.
Find old 1/4 sec. cor. 10 lks. W. marked and witnessed as described by the Surveyor General.
True course, N. 9° W.
I discontinue line at this point and return to cor. of secs. 20, 21, 28 and 29. and thence
I run,
South bet. secs. 28 and 29,
Var. 15° E.

10.60 Over mountainous land, descending.
17.00 Wash, 10 lks. ESE.
35.50 Top of low ridge, brs. E. and descend gradually.
37.50 Descend steeply into gulch.
40.04 Gulch, 50. lks. wide, brs. ESE?
Find old md. of stone on line. There being no other evidences of cor.
I set a limestone, 20 x 6 x 6 ins., 15 ins. in the ground, for 1/4 sec. cor., marked 1/4 on W. face, and raise a mound of stone 2 ft. base, 1 1/2 ft. high, W. of cor.

No bearings available. Pits impracticable.
Thence over rolling land, through dense undergrowth of greasewood and sage brush.
60.80 Wash, 60 lks. wide, ESE?
62.10 Road Cottonwood to Jerome, brs. SE. and NW.
66.50 Rocky wash, 1 ch. wide, NE.
81.38 Find old mound of stone on line. There being no other evidence of cor. at this point,
I set a granite 24 x 10 x 6 ins., 18 ins. in the ground, for cor. of secs. 28, 29, 32 and 33, marked with 1 notch on S. and 4 notches on E. edges, and raise a mound of stone 2 ft. base, 1 1/2 ft. high, W. of cor.
No bearings available. Pits impracticable.
Land, mountainous and rolling.
Soil, rocky, 3d rate.
No timber. Undergrowth, palo negro, scrub oak, greasewood and tesota.
Land, mountainous or covered with dense undergrowth, 81.38 chs.

Thence I run
South bet. secs. 32 and 33,
Var. 15° E.

20.80 Over rolling land.
30.30 Telephone line, ENE., Cottonwood to Jerome.
Irrigation ditch, ENE.
Thence through dense undergrowth of tesota.
39.50 Old md. of stone on line. There being no other evidence of cor.
I set a granite 20 x 12 x 10 ins., 15 ins. in the ground, for 1/4 sec. cor., marked 1/4 on W. face, and raise a mound of stone, 2 ft. base, 1 1/2 ft. high, W. of cor.
No bearings available. Pits impracticable.

Retracements, connected with
Subdivisions of T. 16 N., R. 3 E., Ctd.

chains	
40.00	Creek, 20 lks. wide, flows E.
59.78	Road, Jerome to Camp Verde, SE and NW.
72.50	Wash, 50 lks. brs. E.
81.18	Find old cor. of secs. 32 and 33, on S. bdy. 67 lks. W. of line, which is a stone marked with 4 notches on E and 2 notches on W. faces, in a mound of stone; I build a mound of stone, 2 ft. base, 1 1/2 ft. high, W. of cor. True course of last half mile is S. 0° 57' W. 41.69 chs. Soil, 2d and 3d rate. Land rolling. No timber. Dense undergrowth of tesota and greasewood. Land covered with dense undergrowth, 81.18 chs.

	From the cor. of secs. 32 and 33 on S. bdy. of Tp. I run, West on S. bdy. of Sec. 32. Var. 15° E.
	Descending gradually, through dense undergrowth.
7.10	Wash, 40 lks. brs. NE.
37.00	Road, brs. NNE.
39.95	Find old 1/4 sec. cor. 4 lks. N. of line, marked and witnessed as described by the Surveyor General. True course is N. 89° 57' W.
68.00	Road to Haskins ranch, NW and SE.
80.10	Find old cor. of secs. 31 and 32 on line. True course last half mile S. 89° 57' W., 40.15 chs. Soil, 3d rate, gravelly. Land, rolling. No timber. Undergrowth, tesota and sage brush. Land rolling covered with dense undergrowth, 80.10 chs. Dec. 15, 1907.

	Dec. 16, 1907. At the corner of sections 17, 18, 19 and 20, as heretofore described, at 8:00 a.m., l.m.t., I set off 23° 13' S. on the decl arc and 34° 46' N. on the lat. arc, and determine a true meridian with the solar. Thence I run, West on a random line bet. secs. 18 and 19. Var. 15° E.
40.00	Set temp. 1/4 sec. cor.
78.30	Intersect W. bdy. 34 lks. N. of cor. of secs. 18, 19, 13 and 24. Thence I run, N. 89° 45' E., on a true line bet. secs. 18 and 19. Var. 15° E.
38.30	Over mountainous land, descending. Set a limestone 18 x 8 x 6 ins., 12 ins. in the ground for 1/4 sec. cor. marked 1/4 on N. face, and raise a mound of stone, 2 ft. base, 2 1/2 ft. high, N. of cor. No bearings available. Pits impracticable.
44.00	Gulch, 80 lks. SE. ascend.
60.00	Point of ridge, SE. descend.
78.30	To cor. of secs. 17, 18, 19 and 20. Land mountainous. Soil, 3d and 4th rate, stony. No timber. Undergrowth, scattering tesota and greasewood. Mountainous land, 78.30 chs.

	Thence I run North bet. secs. 17 and 18. Var. 15° E.
30.00	Over mountainous land, broken by numerous small gulches. Ascend through dense palo negro.

Retracements, connected with
Subdivisions of T. 16 N., R. 3 E., Ctd.

chains	
40.10	Find mound of stone on line. There being no other signs of cor. I set a limestone, 18 x 10 x 6 ins., 12 ins. in the ground, for 1/4 sec. cor. marked 1/4 on W. face, and raise a mound of stone, 2 ft. base, 1 1/2 ft. high, W. of cor.
	No bearings. Pits impracticable.
52.68	Top of spur, ESE.
56.00	Canon, 80 lks. wide, 150 ft. deep, ESE. Ascend abruptly.
70.55	Top of sharp ridge. Descend abrupt. Ridge hrs. E and W.
80.00	Build md. of stone on line. No sign of old cor. Along
87.40	Find md. of stone on line. bottom land of Verde River. To establish this cor. in correct original position, I run, E. on a random line bet. secs. 8 and 17. Var. 15° E.
39.55	Find old 1/4 sec. cor. on line.
79.50	Find md. of stone on line, which was pointed out to me and accepted by the residents of the locality as being the cor. of secs. 8, 9, 16 and 17. At this point, I set sand stone 24 x 16 x 8 ins., 18 ins. in the ground for cor. of secs. 8, 9, 16 and 17, marked with 4 notches on S. and E. edges, and raise a mound of stone, 2 ft. base, 1 1/2 ft. high, W. of cor. From which A cottonwood, 12 ins. diam. hrs. S. 2° W. 105 lks. dist., marked T 16 N R 3 E S 17 BT A cottonwood, 12 ins. diam., hrs. S. 25° E., 45 lks. dist., marked T 16 N R 3 E S 16 BT. No other bearings available. Pits impracticable. Thence from this re-established cor. I run, West on a true line, bet. secs. 8 and 17. Over mountainous land.
9.00	Begin steep ascent.
16.75	Point of spur, hrs. N. Thence along N. slope of same.
39.95	Old 1/4 sec. cor. on line, which is a granite stone 12 x 12 x 8 ins., 4 ins. above ground, marked as described by Surveyor General. I remark and reset and build mound of stone, 2 ft. base, 1 1/2 ft. high, N. of cor. No bearings available. Pits impracticable.
58.50	Road to Jordon Ranch SE and NW.
61.50	Road, Jerome to Sycamore, NW and SE
65.20	Fence, N. and S.
67.90	Irrigation ditch, N. and S.
73.70	E. bank of Verde river, flows S.
76.00	W. bank of Verde River.
79.50	Intersection N. and S. line bet. secs. 17 and 18, at a point 87.40 N. of cor. to secs. 17, 18, 19 and 20. At this point of intersection, I set a limestone 18 x 10 x 8 ins., 12 ins. in the ground, for cor. of secs. 8 and 17, marked with 4 notches on S. and 5 notches on E. faces, and raise a mound of stone, 2 ft. base, 1 1/2 ft. high, E. of cor. A sycamore, 20 ins. diam., hrs. S. 70° W., 140 lks. dist., marked T. 16 N R 3 E S 7 B T. No other bearings available. Pits impracticable. Land, mountainous. Soil, 2d and 3d rate, stony. Timber, cottonwood. Undergrowth, willow, tesota. Mountainous land, exceedingly difficult to survey, 79.50 chs.

	Description of line bet. secs. 17 and 18. Land, mountainous.

Retracements connected with Subdivisions of T. 16 N., R. 3 E., Ctd. 7.

chains.

Soil, 3d and 4th rate.
 Timber, cottonwood, willow.
 Undergrowth, palo negro and willow.
 Mountainous land, exceedingly difficult to survey, 87.40 chs.

From the surveys and closures in this township, I know that sec. 18 is out of limits. Therefore, from original cor. of secs. 7, 8, 17 and 18, I run West on a random line, bet. secs. 7 and 18.

40.00 Set temp 1/4 sec. cor.
 78.25 Intersect W. bdy. 7.40 chs. N. of cor. of secs. 7, 12 13 and 18. Whence I run east on a true line, bet. secs. 7 and 18.
 Over mountainous land, descending through dense palo negro and cedar.
 15.00 Head of canon, 30 lks. wide, brs. S. Ascend.
 26.25 Top.
 30.00 Begin descent.
 38.25 Set a limestone, 18 x 15 x 6 ins., 12 ins. in the ground, for 1/4 sec. cor., marked 1/4 on N. face, and raise a mound of stone 2 ft. base, 1 1/2 ft. high, N. of cor., from which
 A cedar, 10 ins. diam., brs. N. 74° W., 77 lks. dist. marked 1/4 S 7 BT.
 A cedar, 10 ins. diam., brs. S. 77° W., 100 lks. dist., marked 1/4 S. 18 BT.
 40.30 Head of canon, SE.
 Ascend.
 53.30 Descend over bluffs 300 ft. high. course NW. and SE.
 78.25 Intersect N. and S. line, 7.40 chs. S. of cor. to secs. 8 and 17, as re-established by me. At this point I mark a limestone in place 24 x 24 x 12 ins. above ground, for closing cor. of secs. 7 and 18, marked CC on W., with 4 notches on S. and 5 notches on E. faces, and raise a mound of stone 2 ft base, 1 1/2 ft. high, W. of cor., from which,
 A willow, 24 ins. diam., brs. N. 23° W., 148 lks. dist., marked T 16 N R 3 E S 7 CC BT.
 A sycamore, 4 ins. diam., brs. N. 26° E., 168 lks. dist., marked T 16 N R 3 E S, 17 CC BT.
 Land, mountainous.
 Soil, 3d and 4th rate.
 Timber, cottonwood, cedar.
 Undergrowth, palo negro, palo verde.
 Mountainous land, exceptionally difficult to survey, 78.25 chs.

From this closing cor., I run,
 North bet. secs. 7 and 8,
 Var. 15° E.

Along bottom land of river.

12.00 Verde river, 2 chs wide, flows SE.
 25.00 Verde river, 2 chs. wide, flows SW.
 Begin steep ascent of bluff.
 40.00 Point for 1/4 sec. cor., falls on bluff. Inaccessible.
 54.50 Top of bluff.
 Set a limestone, 20 x 10 x 4 ins., 15 ins. in the ground, and raise a mound of stone 2 ft. base, 1 1/2 ft high, W. of cor., for witness corner to 1/4 sec. cor. bet. secs. 7 and 8. From which,
 A palo negro 4 ins. diam., brs. N 87° W., 27 lks. dist., marked WC 1/4 S 7 BT.
 63.00 Over very rough and broken land.
 73.25 Intersect 4th Standard Par. N., at point 15.25 chs. W. of standard cor. to secs. 32 and 33, T. 17 N., R 3 E. At point of intersection,
 I set a limestone 30 x 24 x 15 ins., 24 ins. in the ground, for closing cor. to secs. 7 and 8, T 16 N R 3 E. marked CC with 5 grooves on S and 5 grooves on E.
 & 1 groove on

For this mile see
 map notes see attached
 3.

chains.

W. faces, and raise a mound of stone 3 ft. base, 1 1/2 ft. high, S. of cor., from which
 A palo negro, 4 ins. diam., brs. S. 38° E., 26 lks. dist., marked T 16 N R 3 E S 8 CC BT.
 No other bearings available. Pits impracticable.
 Land, mountainsous.
 Soil, 3d and 4th rate.
 Timber, cottonwood and scattering cedar.
 Undergrowth, palo verde and greasewood.
 Mountainous land, exceptionally difficult to survey,
 73.25 chs.

- From the cor. of secs. 8, 9, 16 and 17,
 I run,
 North bet. secs. 8 and 9, on a random line.
 Var. 15° E.
- 45.07 Find old 1/4 sec. cor., 30 lks. E. of line.
 From which I run random line
 North
- 39.80 Find old. sec. cor., 89 lks. E. of line, which cor. to
 secs. 4, 5, 8 and 9, is already described in my notes
 of retracements.
 From his old cor. to secs. 4, 5, 8 and 9,
 I run,
 S. 1° 17' W., on a true line bet. secs. 8 and 9.
 Var. 15° E.
- Over rolling land.
- 12.50 Wash, 20 lks. wide, flows West.
 19.25 Intersect 4th standard parallel north, 14.80 chs.
 W. of Stand. cor. to secs. 33 and 34, of T. 17 N R 3 E.
- 19.50 House of O. J. Ames, 50 lks. E.
 21.20 Irrigation ditch, E. and W.
 26.20 North bank Verde river, flows E.
 29.20 S. bank of Verde river.
 35.50 Irrigation ditch flows SE.
 39.50 Fence, E. and W.
 39.81 1/4 sec. cor. A limestone 14 x 14 x 10, marked 1/4 on
 W. face, with mound of stone on W.
 Thence from 1/4 cor. I run
 S. 0° 25' W., continuing measurement from sec. cor.
- 41.00 Ranch house 80 lks E.
 44.50 Fence E and W
 58.20 Irrigation ditch, E and W
 69.10 Irrigation ditch, E and W
 64.90 Fence, E and W.
 80.00 Verde river, 3 chs. wide, flows WSW
 84.88 To cor. of secs. 8, 9, 16 and 17, heretofore described
 I heretofore discontinue my subdivisions and retracements
 in T. 16 N., R. 3 E.
 Dec. 16, 1907.

*with cor.
 sep. into line
 marked page 3*

GENERAL DESCRIPTION.

The western portion of this township as surveyed by me is over rough, broken land. The only valuable land in the township is along the Verde river, where are several ranches. The soil along the river bottom is very fertile and there is always plenty of water in the river to irrigate more land than there is now under cultivation. The 4th Standard Par. North cuts off the south tier of sections and part of secs. 7, 8, 9, 10, 11 and 12 of this township, making it fractional. I had great difficulty in locating this old line. A peculiar condition arises from the fact that O. J. Ames has title to the NE 1/4 of Sec. 8; the NE 1/4 of the SE 1/4 of Sec. 8, and the W 1/4 of NW 1/4 and SE 1/4 of NW 1/4 of sec. 9, all in Tp. 16 N., R 3 E., and based upon the old 1/4 sec. cor., bet. secs 5 and 8, and the cor. of secs. 4, 5, 8 and 9, according to the original survey and field notes of Tp. 16 N., R 3 E.

Retracements, connected with
Subdivisions of T. 16 N., R. 3 E., Ctd.

chains

My resurvey and location of the 4th standard parallel
north throws part of this patented land in T. 17 N., R
3 E. Mr. Ames has made many improvements, substantial
buildings, consisting of dwellings, barns, etc., an irri-
gation ditch, cultivating about one hundred acres of land.

No signs of any mineral land in this township, the
rock formation being stratified limestone.

No notary available, therefore I administer oaths of
assistants.

Jesse B Wright
U. S. Deputy Surveyor.

FINAL OATHS OF DEPUTY SURVEYOR AND HIS ASSISTANTS.

LIST OF NAMES.

BOOK 2144

A list of the names of the individuals employed by

Jesse B. Wright

a

United States Deputy Surveyor, to assist in running, measuring, and

marking the lines and corners described in the foregoing field notes of the survey of

Subt 5 Resurvey in T5, 16 & 17 N R 3 E. GTR 137M

showing the respective capacities in which they acted:

Leon G. Moore Chainman.

Albert M. Crockett Chainman.

Harold G. Brown ~~Moundman~~.

Arthur G. Wood Moundman.

Frank D. Ames Arman.

Eugene D. Darter ~~Arman~~.
Flagman.

FINAL OATH OF ASSISTANTS.

We hereby certify that we assisted

Jesse B. Wright

a

United States Deputy Surveyor, in surveying all

those parts or portions of the

Subt 5 resurvey in T5 16 & 17 N R 3 E

of the *6th 1/4*

Salt River Basin meridian, *Section* of *Arizona*, which are represented in the foregoing field notes as having been surveyed by him and under his direction; and that said survey has been in all respects, to the best of our knowledge and belief, well and faithfully surveyed, and the corner monuments established, according to the instructions furnished by the United States Surveyor

General for *Arizona*

Leon G. Moore ✓ Chainman.

Albert M. Crockett ✓ Chainman.

Harold G. Brown ✓ ~~Moundman~~.

Arthur G. Wood ✓ Moundman.

Frank D. Ames ✓ Arman.

Eugene D. Darter ✓ Flagman.

Subscribed and sworn to before me this *26th*

day of *Dec*, *1907*

My Commission expires *Jan 11, 1911*

M. Maud Harrison

Notary Public



87 11
BOOK 2144

FINAL OATH OF UNITED STATES DEPUTY SURVEYOR.

I, Jesse B Wright, United States Deputy Surveyor, do solemnly swear that, in pursuance of a contract received from Frank S. Ingalls United States Surveyor General for Arizona, bearing date of the 15th day of April, 1897, I have well, faithfully, and truly, in my own proper person, and in strict conformity with the instructions furnished by the United States Surveyor General for Arizona, the Manual of Surveying Instructions, and the laws of the United States, surveyed all those parts or portions of The Subdivision & surveys of T 5 16 & 17 N R 3 E

of the Gila and Salt River Basins meridian, in the Territory of Arizona, which are represented in the foregoing field notes as having been surveyed by me, and under my direction; and I do further solemnly swear that all the corners of said survey have been established and perpetuated in strict accordance with the Manual of Surveying Instructions, and the special written instructions of the United States Surveyor General for Arizona and in the specific manner described in the field notes, and that the foregoing are the original field notes of such survey; and should any fraud be detected, I will suffer the penalty of perjury under the provisions of an Act of Congress approved August 8, 1846.

Jesse B Wright
United States Deputy Surveyor.

Subscribed by said Jesse B Wright, and sworn to before me }
this 20th day of December, 1907

W. H. Murray



U. S. Commissioner, First Judicial District,
Territory of Arizona, residing at Tucson.

APPROVAL.

OFFICE OF THE UNITED STATES SURVEYOR GENERAL,

The foregoing field notes of the survey of Fragmentary Subdivisions in T 5 16 N R 3 E, Gila and Salt River Basins and Meridian, Arizona, Phoenix, Ariz. Sept. 16, 1897

executed by Jesse B Wright U.S. Dep. Sur. under his contract No. 145, dated April 15, 1897 having been critically examined, and the necessary corrections and explanations made, the said field notes, and the surveys they describe, are hereby approved.

United States Surveyor General.

I certify that the foregoing transcript of the field notes of the above-described surveys in _____, has been correctly copied from the original notes on file in this office.

United States Surveyor General.

Book Q.

4-679.

BOOK 2144

82
17
DILLON
MAY 1 1908

Supplemental FIELD NOTES

OF THE SURVEY OF THE

T 16 N R 3 E.

Of the Great Salt River Base Meridian,

Utah

AS SURVEYED BY

Joseph B. Wright

, United States Deputy Surveyor,

Under his Contract No. 145-, dated April 15, 1908

Survey commenced Dec 12, 1908

Survey completed Dec 12, 1908

83
13

BOOK 2144

NAMES AND DUTIES OF ASSISTANTS.

Gregory M. Martin Chairman

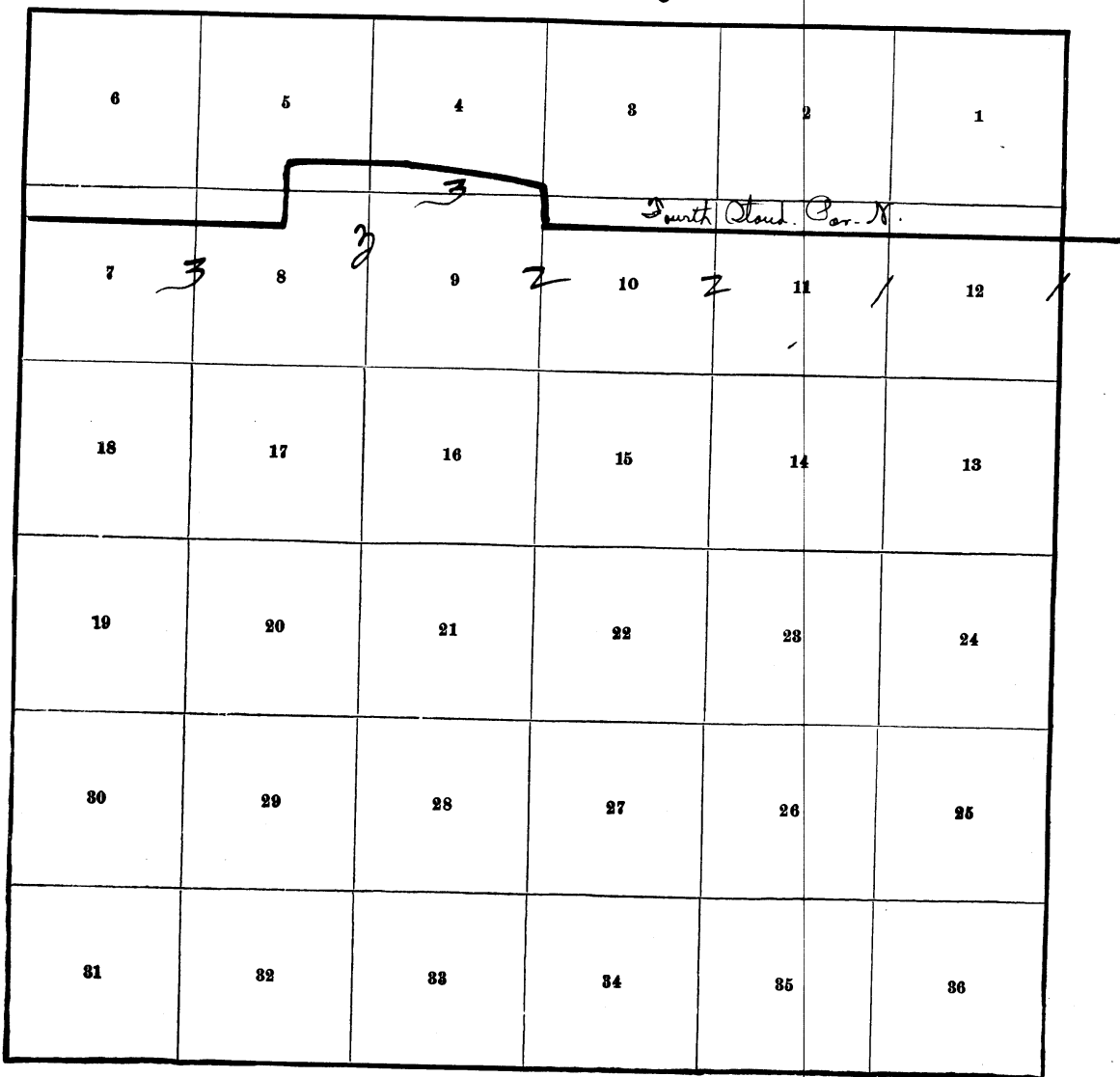
Henry Davis "

Frank D. Ames Foreman

BOOK 2144

INDEX DIAGRAM.

Township 16 N, Range 3 E



Meanders Page _____

PRELIMINARY OATHS OF ASSISTANTS.

WE, Grayson M Martin and Henry Davis
do solemnly swear that we will well and faithfully execute the duties of chainmen; that we will level the chain upon even and uneven ground, and plumb the tally pins, either by sticking or dropping the same; that we will report the true distances to all notable objects, and the true lengths of all lines that we assist in measuring, to the best of our skill and ability, and in accordance with instructions given us, in the survey of lines covered in Supplemental Field Note T 16 N R 3 E

Grayson M Martin, Chainman.
Henry Davis, Chainman.

Subscribed and sworn to before me this 9th
day of Dec, 1908



Joseph B Wright
U.S. Deputy Surveyor

WE, _____ and _____
do solemnly swear that we will well and truly perform the duties of moundmen in the establishment of corners, according to the instructions given us, to the best of our skill and ability, in the survey of _____

_____, Moundman.
_____, Moundman.

Subscribed and sworn to before me this _____
day of _____, 190 _____



WE, _____ and _____
do solemnly swear that we will well and truly perform the duties of axmen in the establishment of corners and other duties, according to instructions given us, to the best of our skill and ability, in the survey of _____

_____, Axman.
_____, Axman.

Subscribed and sworn to before me this _____
day of _____, 190 _____



I, Frank D Ames, do solemnly swear that I will well and truly perform the duties of flagman according to instructions given me, to the best of my skill and ability, in the survey of lines covered in Supplemental field note T 16 N R 3 E

Frank D Ames, Flagman.

Subscribed and sworn to before me this 9th
day of Dec, 1908



Joseph B Wright
U.S. Deputy Surveyor

Supplemental field Notes T.16 N.R. 3 E.

Chains

(For test of instrument in connection with surveys under these notes see supplemental notes 4th Std. Par. N.)

Dec. 12, 1908,

In accordance with supplemental special instructions, dated August 27, 1908, I begin at the 1/4 sec. cor. bet. secs. 7 & 12 on E. bdy. of Tp.

At this cor. which is a limestone 18x10x10 ins. firmly set and marked as described by the Surveyor General,

I build a mound of stone 2 ft. base 1 1/2 ft. high

W. of cor., and at 8h a.m., l.m.t., I set off 23° 01' S. on the decl. arc and 34° 48' N. on the lat. arc and determine a true mer. with the solar.

Thence I run,

North, on a random line bet. secs. 7 & 12.

Var. 14 1/2° E.

40.10 Find orig. cor. of secs. 1, 6, 7 & 12, 6 lks. W. of line. I destroy this cor. as per instructions and run from orig. cor. point.

S. 0° 05' E. on a true line bet. secs. 7 & 12.

Over broken mesa land, through dense cedar.

9.12 Intersect 4th Std. Par. N. 16.26 chs. W. of Std. cor. of secs. 31 & 32 of T. 17 N. R. 4 E.

At point of intersection I

Set a limestone 15x12x6 ins. 10 ins. in the ground for closing cor. of Tps. 16 N. Rs. 3 & 4 E. marked C.C. on S. with 6 grooves on S. E. & W. faces and raise a mound of stone 2 ft. base 1 1/2 ft. high S. of cor. whence a cedar tree 6 ins. diam. brs. S. 21 1/2° E. 99 lks. dist. marked T. 16 N. R. 4 E. S. 7 C.C.B.T.

A palonegro tree 6 ins. diam. brs. S. 52 1/4° W. 38 lks. dist. marked T. 16 N. R. 3 E. S. 12 C.C.B.T.

No other bearings available.

13.12 Begin descent from mesa.

18.00 Bottom of descent.

40.10 To 1/4 sec. cor. as above described.

Land, mountainous; soil, second rate, stony, gravelly.

Timber, cedar; undergrowth, dense cedar, cactus.

Mountainous land, covered with dense undergrowth and exceptionally difficult to survey, 40.10 chs.

At the 1/4 sec. cor. bet. secs. 11 & 12, which is a limestone 10x10x8 ins. above ground, marked as described by the Surveyor General, the pits having become obliterated, I dig pits 18x12x12 ins. on line N. & S. 3 ft. dist. and raise a mound of earth 3 1/2 ft. base 1 ft. high W. of cor. No bearings available.

Thence I run,

North on a random line bet. secs. 11 & 12.

40.15 Cor. of secs. 1, 2, 11 & 12 brs. W. 14 lks. dist. which I destroy as per instructions, and run thence from orig. pt. S. 0° 12' E. on a true line bet. secs. 11 & 12.

Over broken mesa through dense cedar and palonegro.

9.20 Intersect 4th Std. Par. N. at pt. 15.42 chs. W. of Std. cor. of Tps. 17 N. Rs. 3 & 4 E. At pt. of intersection, I

Set a limestone 15x12x10 ins. 10 ins. in the ground for closing cor. of secs. 11 & 12, marked C.C. on S.

With 1 groove on E. & 5. grooves on W. faces and raise a mound of stone 2 ft. base 1 1/2 ft. high S. of cor. from which, A palonegro tree 6 ins. diam. brs. S. 45° E. 12 lks. dist., marked T. 16 N. R. 3 E. S. 12 C.C.B.T.

No other bearings available.

Desc: grad. thro' dense cedar & palonegro.

40.15 To orig. 1/4 sec. cor. as above described.

Land, mts. broken mesa.

Soil, 3rd rate, gravelly.

Timber, cedar. Undergrowth, dense cedar & palonegro.

Mts. land covered with dense undergrowth & exc. difficult to survey, 40.15 chs.

see orig. notes
book P. page
6 and 7.

see orig. notes
book P. page
7

87
17

Chains

At the 1/4 sec.cor. bet. secs. 10 & 11, which is and old post marked as described by the Surveyor General, This post being badly decayed, and the markings almost obliterated, in its place,
Set a limestone 24x15x6 ins. 18 ins. in the ground for 1/4 sec.cor.marked 1/4 on W. face and raise a mound of stone 2 ft. base 1 1/2 ft. high W. of cor.
No bearings available.

40.08 Thence I run,
North on a random line bet. secs. 10 & 11.
Cor. of secs. 2,3,10 & 11 brs. W. 10 lks. dist.which I destroy as per instructions and run from orig.cor.pt. S.0° 09' E. on a true line bet. sec. 10 & 11.

9.08 Over broken mesa land.
Intersect 4th Std.Par.N.15.08 chs.W.of std.cor.of secs. 35 & 36 of T.17 N. R. 3 E.At pt. of intersection I Set a limestone 24x15x12 ins. 18 ins. in the ground for closing cor. of secs. 10 & 11, marked with 2 grooves on E. 4 grooves on W. and C.C. on S. faces and raise a mound of stone 2 ft. base 1 1/2 ft. high S. of cor. from which, A palonegro tree 6 ins.diam.brs.S.23 1/2 ° E.27 lks.dist. marked T. 16 N. R. 3 E. S. 11 C.C.B.T.

21.00 A cedar tree 12 ins.diam.brs.S.48 1/4 ° W.143 lks. dist. marked T. 16 N. R. 3 E. S. 10 C.C.B.T.
Desc. through dense cedar & palonegro.
34.00 Gulch 20 lks. wide, course S.W. asc.

40.08 Top of mesa, leave dense cedar.
To orig. 1/4 sec.cor. as above described.
Land mts., broken mesa Soil,3rd rate, gravelly, stony. Timber,cedar.Undergrowth, dense cedar & palonegro. Land covered with dense undergrowth & exc. difficult to survey, 40.08 chs.
At this cor. at 11h,54m, a.m.,l.m.t., I set off 23° 05'S on the dec. arc and obs. the sun on the mer.
The resulting lat. is 34° 48' N.

At the 1/4 sec.cor.bet.secs.9 & 10, which is a limestone 14x6x6 ins. marked and witnessed as described by the Surveyor General, I rebuild the mound of stone 2 ft. base 1 1/2 ft. high W. of cor.No bearings available.
Thence I run,

40.24 North on a random line bet. secs. 9 & 10.
Cor. of secs. 3,4,9 & 10 brs. W.14 lks.dist.which I mark as per instructions, T. 16 N. R. 3 E. S. 9 on S.W. face, Obliterate old notches on E. edge, and re-mark with 5 notches on S. edge, and raise a mound of stone 2 ft. base 1 1/2 ft. high S.W. of cor. No bearings available.
Thence I run, S. 0° 12'E. on a true line on E. bdy.sec.9.
Over broken mesa land through dense cedar & palonegro.

4.00 Gulch, 50 lks. wide, course W.S.W. asc. steep.
9.30 Intersect 4th Std.Par,N. at closing Std.cor. as established by me at point 14.90 chs.W.of Std.cor.of secs. 34 & 35 and described in supplemental notes of 4th Std. Par.N.

12.00 Top of ridge, brs. S.W. desc.grad.
33.80 Gulch 50 lks. wide, course S.W. asc.
39.00 Top of mesa., leave dense cedar.
40.24 To orig. 1/4 sec.cor. as above described.

Land mts.
Soil,3rd rate? stony.
Timber, scattering cedar.
Undergrowth dense cedar & palonegro.
Mts. land covered with dense undergrowth and exceptionally difficult to survey, 40.24 chs.

Note: I also destroy old 1/4 cors. to secs.10,11,and 12.

see my notes book P. pages

Supplemental, notes T.16 N.R. 3 E.

chains

orig notes page 8.

orig notes page 7.

orig notes book P. page 4.

The original cor. of secs. 4, 5, 8 & 9 of T. 16 N. R. 3 E. which I find as described in my original notes marked and witnessed as described by the Surveyor General, having no well defined faces for marking on S.E. & S.W. faces I leave in its original position, it being marked with 5 notches on S. & 4 notches on E. edges, and beside it I set a sandstone 20x12x10 ins. 15 ins. in the ground which I mark as per instructions T.16 N. S.9 on S.E. and R. 3 E. S. 8 on S.W. faces. I destroy the original mound of stone and build a mound of stone 2 ft. base 1 1/2 ft. high S. of cor. No bearings available.

From the closing cor. of secs. 7 & 18 as established and described by me in my original notes, I run North 22° W. along E. bdy. sec. 7 Along bottom land of Verde River.

7.40 The cor. of secs. 8 & 17 as described in original notes. Thence I run N. 0° 3' W. continuing measurement, between secs. 7 & 8

12.00 Verde River 2 chs. wide, course S.E.
25.00 Verde River 2 chs. wide, flows S.W.
27.00 Top of N. bank, asc. over stony ground.
40.00 Set a limestone 24x12x10 ins. 18 ins. in the ground for 1/4 sec. cor. on E. bdy. sec. 7, marked 1/4 S. 7 on W. face and raise a mound of stone 2 ft. base 1 1/2 ft. high W. of cor. No bearings available.

47.40 From this cor. asc. abrupt. The point for 1/4 sec. cor. to sec. 8 falls on perishable precipitous side of bluff.

54.50 Top of bluff or high point extending SE. descend. Set a limestone 24x12x5 ins. in mound of stone on bed rock for witness 1/4 sec. cor. to sec. 8, marked W.C. 1/4 on E. face and raise a mound of stone 2 ft. base 1 1/2 ft. high E. of cor. No bearings available. The witness cor. as established in my original notes I destroy.

73.25 Deso. over very rough and broken land. sloping N.E. Intersect 4th Sts. Par. N. at point 15,25 chs. W. of Std. cor. to secs. 32 & 33. T. 17 N. R. 3 E. At point of intersection I set a limestone 30x24x15 ins. 24 ins. in the ground for closing cor. to secs. 7 & 8, marked C.C. on S. with 5 grooves on E. 1 groove on W. & 5 grooves on S. faces and raise a mound of stone 2 ft. base 1 1/2 ft. high S. of cor. from which, A palonegro tree 4 ins. diam. brs. S. 38° E. 26 lks. dist. marked T.16 N.R. 3 E. S. 8 C.C.B.T. No other bearings available. Pits imprac.

40.13 From the N.E. cor. of sec. 9 as re-established by me, I run, N. 83° 24' W. on a true line on N. bdy. sec. 9 To orig. 1/4 sec. cor. on N. bdy. sec. 9, which I re-mark 1/4 S. 9 on S. face destroy the old mound of stone and raise a mound of stone 2 ft. base 1 1/2 ft. high S. of cor. No bearings available., Thence I run, N. 82° 25' W. along N. bdy. sec. 9

25.49 Closing cor. of secs. 33 & 34 as described in orig. notes. of T. 17 N. R. 3 E.

40.24 To old cor. of secs. 8 & 9 as heretofore described. Thence I run, N. 87° 39' W. on a true line on N. bdy. of sec. 8

40.13 To orig. 1/4 sec. cor. marked as described by the Surveyor General, which markings I change to 1/4 S. 8 on S.E. face and raise a mound of stone 2 ft. base 1 1/2 ft. high S.E. of cor. Dec. 12, 1908.

Jose B. Wright
U.S. Deputy Surveyor.

FINAL OATHS OF DEPUTY SURVEYOR AND HIS ASSISTANTS.

LIST OF NAMES.

A list of the names of the individuals employed by Joseph B. Wright, United States Deputy Surveyor, to assist in running, measuring, and

marking the lines and corners described in the foregoing field notes of the survey of lines

covered in Supplemental field notes T16 N R 3 E.

showing the respective capacities in which they acted:

Grayson M. Martin, Chairman.

Henry Davis, Chairman.

Moundman.

Moundman.

Axman.

Axman.

Frank D. Ames, Flagman.

FINAL OATH OF ASSISTANTS.

We hereby certify that we assisted Joseph B. Wright, United States Deputy Surveyor, in surveying all

those parts or portions of the line covered in supplemental field notes T16 N R 3 E

of the Great

Salt River Canal meridian, Tu. of Arizona, which are represented in the foregoing field notes as having been surveyed by him and under his direction; and that said survey has been in all respects, to the best of our knowledge and belief, well and faithfully surveyed, and the corner monuments established, according to the instructions furnished by the United States Surveyor

General for Arizona
Grayson M. Martin, Chairman.

Henry Davis, Chairman.

Moundman.

Moundman.

Axman.

Axman.

Frank D. Ames, Flagman.

Subscribed and sworn to before me this 12th day of Dec, 1908

Joseph B. Wright
U. S. Deputy Surveyor



20 20
BOOK 2144

FINAL OATH OF UNITED STATES DEPUTY SURVEYOR.

I, Jesse B Wright, United States Deputy Surveyor, do solemnly swear that, in pursuance of a contract received from Frank S. Ingalls, United States Surveyor General for Arizona, bearing date of the 14th day of April, 1907, I have well, faithfully, and truly, in my own proper person, and in strict conformity with the instructions furnished by the United States Surveyor General for Arizona, the Manual of Surveying Instructions, and the laws of the United States, surveyed all those parts or portions of _____
T 16 N R 9 E

_____ of the _____ meridian, in the _____ of _____, which are represented in the foregoing field notes as having been surveyed by me, and under my direction; and I do further solemnly swear that all the corners of said survey have been established and perpetuated in strict accordance with the Manual of Surveying Instructions, and the special written instructions of the United States Surveyor General for Arizona and in the specific manner described in the field notes, and that the foregoing are the original field notes of such survey.

Jesse B Wright
United States Deputy Surveyor.

Subscribed by said Jesse B Wright, and sworn to before me }
this 16th day of December, 1908

W. H. Murray
U.S. Commissioner



APPROVAL.

OFFICE OF THE UNITED STATES SURVEYOR GENERAL,

Phoenix, Ariz. Sept 16, 1909
The foregoing ^{copy} field notes of the survey of ^{re} a portion of the West
By and Subdivisions of T 16 N R 9 E,
Gila and Salt River Base and Meridian
Arizona

executed by Jesse B Wright U.S. Dep. Sur.
under his contract No. 145, dated April 15, 1907, having been critically examined, and the necessary corrections and explanations made, the said field notes, and the surveys they describe, are hereby approved.

Frank S. Ingalls
United States Surveyor General.

I certify that the foregoing transcript of the field notes of the above-described surveys in _____, has been correctly copied from the original notes on file in this office.

United States Surveyor General.