

Drawn by [Signature]

240

4-679.

BOOK 2222

Book B.

Accepted G. L. O. letter

E. dated Sep. 26-1911

JAN 24 1911

2222

FEB 16 1911

2222

FIELD NOTES

OF THE SURVEY OF THE

Second Guide Meridian West

through

Townships No 21, 22, 23 and 24 North

Between ranges 8 and 9 West of the Gila
and Salt River Base and Meridian

2222

2222

2222

Of the Gila and Salt River Base Meridian,

Territory of Arizona

AS SURVEYED BY

W. O. Secor.

Transitman
United States Deputy Surveyor,

Under ~~his~~ ^{Group} Contract No. 7, dated August 25, 1910

Survey commenced November 4, 1910

Survey completed November 17, 1910

2222

2222

79/
1A

BOOK 2222

NAMES AND DUTIES OF ASSISTANTS.

Theodor Alden

Chairman

C. J. Schwartz

Chairman

Carl Barandon

Chairman

J. H. McCall

Chairman

George Ely

Member

Paul Dial

Member

BOOK 2222

INDEX DIAGRAM.

Township _____, Range _____ *See page 2 ✓*

| | | | | | |
|----|----|----|----|----|----|
| 6 | 5 | 4 | 3 | 2 | 1 |
| 7 | 8 | 9 | 10 | 11 | 12 |
| 18 | 17 | 16 | 15 | 14 | 13 |
| 19 | 20 | 21 | 22 | 23 | 24 |
| 30 | 29 | 28 | 27 | 26 | 25 |
| 31 | 32 | 33 | 34 | 35 | 36 |

Meanders Page _____

102
13
BOOK 2222

PRELIMINARY OATHS OF ASSISTANTS.

WE, Theodore Alden, C. J. Schwartz and Carl Barandon and J. H. McCall
do solemnly swear that we will well and faithfully execute the duties of chainmen; that we will level the chain upon even and uneven ground, and plumb the tally pins, either by sticking or dropping the same; that we will report the true distances to all notable objects, and the true lengths of all lines that we assist in measuring, to the best of our skill and ability, and in accordance with instructions given us, in the survey of The 2^d Guide Meridian West.

J. H. McCall, Chainman.

Carl Barandon, Chainman.

Theodore Alden, Chainman.

Subscribed and sworn to before me this 3rd
day of November, 1910

C. J. Schwartz
W. J. Cor.
Chainman



I, George Ely and _____

do solemnly swear that we will well and truly perform the duties of moundmen in the establishment of corners, according to the instructions given us, to the best of our skill and ability, in the survey of The Second Guide Meridian West

George Ely, Moundman.

_____, Moundman.

Subscribed and sworn to before me this 3rd
day of November, 1910

W. J. Cor.
Transitman



I, Paul Dial and _____

do solemnly swear that we will well and truly perform the duties of axmen in the establishment of corners and other duties, according to instructions given us, to the best of our skill and ability, in the survey of Second Guide Meridian West

Paul Dial, Axman.

_____, Axman.

Subscribed and sworn to before me this 3^d
day of November, 1910

W. J. Cor.
Transitman



I, _____, do solemnly swear that I will well and truly perform the duties of flagman according to instructions given me, to the best of my skill and ability, in the survey of _____

_____, Flagman.

Subscribed and sworn to before me this _____
day of _____, 19_____



Second Guide Meridian West.

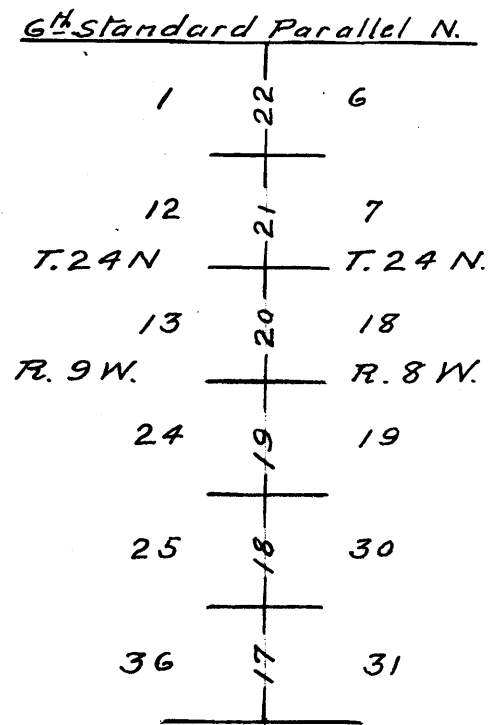
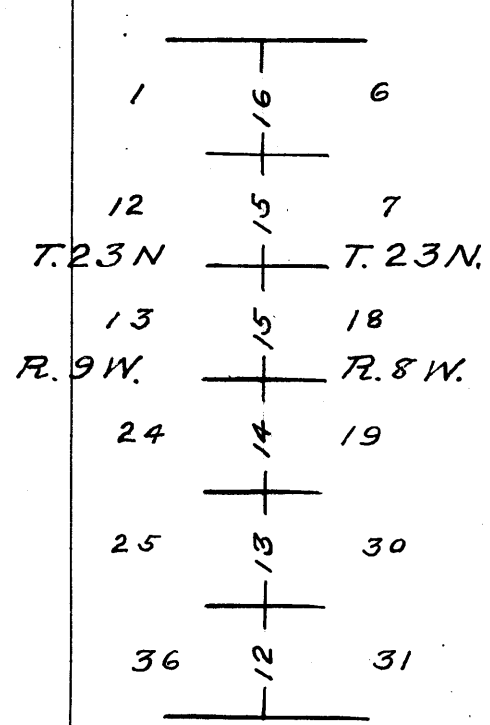
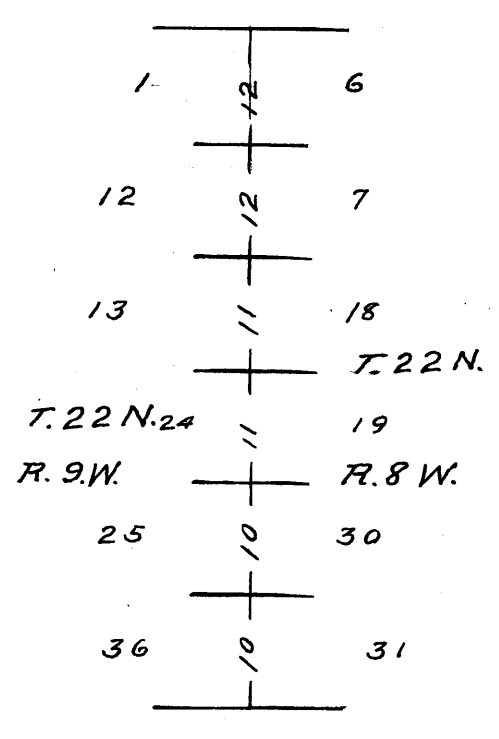
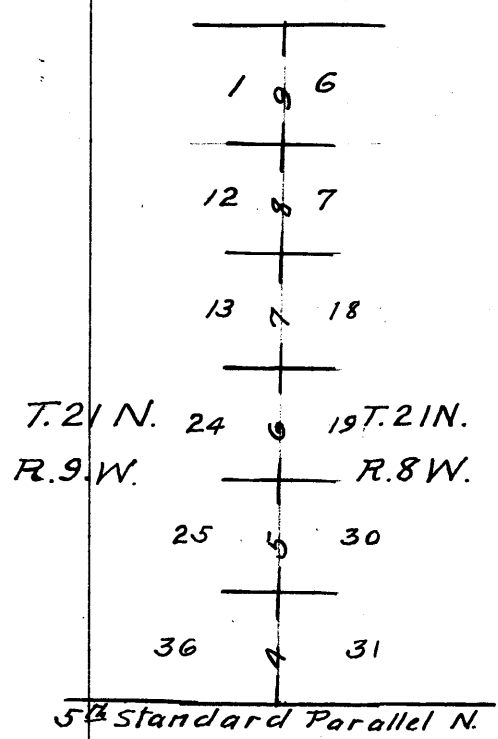
Theodore Alden
C. J. Schwartz
Carl Barandon
J. H. McCall
George Ely
Paul Dial

Chairman
Chairman
Chairman
Chairman
Moundman
Axman

BOOK 2222

- Index -

Second Guide Meridian West.



2^d Guide Meridian West Through Tps. 21 N. Between Rs. 8^{and} 9^{W.}

Survey commenced Nov⁴ 1910, ^{and} executed with a Buff^{and} Bergey's engineer's transit N^o 672 with a Saegmiller's Solar Attachment, approved by the U.S. Surveyor-General ^{and} Asst. Supervisor of Surveys, the horizontal limb having two double verniers placed opposite to each other ^{and} reading to 30" of arc.

I examine the adjustments of my transit ^{and} find them to be correct, then to test the solar apparatus, by comparing its indications, resulting from solar observations made during a.m. ^{and} p.m. hours, with a meridian determined by observations on Polaris, I proceed as follows:

At my camp at Cook's Tank which is about 1 mile N. of standard cor. of Tps. 21 N. Rs. 8^{and} 9^{W.}; latitude 35° 10' N.; longitude 113° 11' W., at 4^h 00^m p.m. l.m.t. I set off 15° 18' 00" S. on the decl. arc; 35° 10' N. on the lat. arc; and determine a meridian with the solar ^{and} mark a point therein on a stake firmly set in the ground about 5 chs. S. of my station.

At 16^h 30^m I observe Polaris at western elongation, in accordance with instructions in the Manual ^{and} mark a point in the line thus determined, on a stake driven in the ground about 5 chs. N. of my station.

Nov. 4. 1910.

Nov. 5: At 7 a.m. I lay off the azimuth of Polaris, 1° 26' to the east, ^{and} mark the meridian thus determined, by driving a tack in a stake set in the ground 5 chs. N. of my station; ^{and} passing the telescope of my transit the line falls 0.3 ins. west of the mark determined by the solar.

At 8^h 00^m a.m. l.m.t. I set off 15° 30' 00" S. on the decl. arc; 35° 10' N. on the lat. arc; ^{and} mark a point in the meridian determined with the solar, by a point on the stake already set 5 chs. S. of my station; this point

2nd Guide Meridian West Through Tps. 21 N. Between Rs. 8^{and} 9 N.

falls.
0.4 ins. west of the meridian established by the
Polaris observation. I therefore conclude that
the adjustments of the instrument are satis-
factory.

Nov 5, 1910

Nov 6: At 8^h 00^m a.m. l.m.t. I set off 15° 48' 2" S. on
the decl. arc; 35° 09' 30" N. on the lat. arc; and
determine a meridian with the solar at the standard
1/4 sec. cor. of . sec. 31, Tp. 21 N. R. 8 W. which is a
malpais 6x8x8 ins. above ground, in open park marked
S.C. 1/4 on N. face. Thence I run

14.70

S. 88° 02' W. along S. Bdy. sec. 31 to the closing cor.
of Tps. 20 N. R. 8^{and} 9 W. which is visible, ^{and} which
is a lime stone, 10x10x10 ins. above ground marked
C.C. on S. with 6 notches on E. ^{and} W. edges from which
A cedar 7 ins. diam. bears S. 60° 15' W. 260 lks. dist.
marked T. 20 N. R. 9 W. S. 1 B. J.

A cedar 10 ins. diam. bears N. 44° 50' W. 185 lks. dist.
marked T. 20 N. R. 8 & 9 W. S. 6 & 1, C.C. B. J.

19.00

Enter dense cedar ^{and} piñons.

39.89

A lime stone 14x10x4 ins. above ground, with mound
of stones, bears N. 94 lks. dist., from which
A branch of cedar bush 3 ins diam. bears N. 40° W.
8 lks. dist. with marks indistinct.

I re-establish this cor. by marking bearing trees
as follows:

A piñon 8 ins. diam. bears N. 71° 26' W. 62 lks. dist.
marked S.C. T. 21 N. R. 9 W. S. 36 B. J.

A piñon 10 ins. diam. bears N. 54° 26' E. 82 lks.
dist. marked S.C. T. 21 N. R. 8 W. S. 31 B. J.

From the standard cor. of Tps. 21 N. R. 8^{and} 9 W. I run
N. Between secs. 31 ^{and} 36.

Through dense cedar ^{and} piñons over rough, rocky land.

6.00

Descend to draw.

14.00

Bottom of draw, course W. asc.

34.10

Top of rocky point, bears N. E. ^{and} S. E. Desc.

40.00

Set 1 in. iron post 26 ins. in ground for 1/4 sec. cor.
marked ^{S. 36} 1/4 on W; S. 31 on E; from which

Results of two sets of observations April

2nd Guide Meridian West, Through Tps. 21 N. Rs. 8^{and} 9 West.

| | |
|-------|--|
| | A cedar 10 ins diam. bears N. 59° 45' E. 307 lks. dist. marked $\frac{1}{4}$ S. 31 B. T. |
| | A cedar 16 ins. diam. bears N. 55° 26' W. 329 lks. dist. marked $\frac{1}{4}$ S. 36 B. T. |
| 46.10 | Bottom of draw, course S. W. |
| 50.00 | Begin to ascend slope. |
| 56.00 | Ascend more abruptly. |
| 65.47 | Pile of rocks on line. |
| 73.30 | Begin to descend, Leave timber. |
| 80.00 | Set 3 in iron post 26 ins. in ground for cor. of secs. 25, 30, 31 ^{and} 36, marked S. 21 N. on N.; R. 9 W. S. 25 on N. W.; R. 8 W. S. 30 on N. E.; S. 36 on S. N. ^{and} S. 31 on S. E. of cross on top of cap.; dig pits 18x18x12 ins. in each sec., 5 $\frac{1}{2}$ ft. dist., ^{and} raise a mound of earth 4 ft. base, 2 ft. high W. of cor. Land, rough ^{and} hilly. Soil, rocky ^{and} shallow, covered with fair growth of grama grass. Dense cedars spinous 73.30 Chs. |
| | North between secs. 25 ^{and} 30 |
| | Descending over rocky ground |
| 5.00 | Foot of descent - proceed over smooth grassy land. Drainage to S. E. |
| 10.00 | Ascend gradually over smooth land. |
| 18.50 | Ascend more abruptly over rocky ground |
| 36.00 | Enter dense cedars. |
| 40.00 | Set 1 in. iron post 26 ins. in ground for $\frac{1}{4}$ sec. cor. marked S. 25 $\frac{1}{4}$ on N. ^{and} S. 30 on N. from which A cedar 8 ins. diam. bears N. 84° 24' E. 61 lks. dist. marked $\frac{1}{4}$ S. 30 B. T. |
| | A cedar 8 ins. diam. bears N. 49° 34' W. 204 lks. dist. marked $\frac{1}{4}$ S. 25 B. T. |
| 47.50 | Top of ascent, descend gradual slope. |
| 76.00 | Cedars become scattering. |
| 80.00 | Set 3 in. iron post 24 ins. in ground for cor. of secs. 19, 24, 25 ^{and} 30, marked S. 21 N. on N.; R. 9 W. S. 24 on N. W.; R. 8 W. S. 19 on N. E.; S. 25 on S. W.; ^{and} S. 30 on S. E.; From which |

2nd Guide Meridian West, Through Tps. 21 N. Ranges 8th & 9 West.

A cedar 18 ins. diam. bears N. 23° 40' W. 170 lks. dist. marked T. 21 N. R. 9 W. S. 24 B. S.

No other trees available.
Land rough ^{and} hilly 66.50 Chs.; rolling 13.50 Chs.
Dense cedars 40.00 Chs. -
Soil 13.50 Chs. a good quality of loam mixed with volcanic ash.; 66.50 Chs. rocky ^{and} shallow.
A good growth of grama grass covers the mile.
Nov 6, 1910.

Nov 7: At 8^h 00^m a.m. l.m.t. I set of 16° 06' S. on the decl. arc; 35° 11' N. on the lat. arc; ^{and} determine a meridian with the solar at the cor. of secs. 19. 24 25 ^{and} 30. Thence I run North between secs. 19 ^{and} 24.

Over rolling land descending gradually through scattering cedars brush.

- 14.00 Bottom of draw, course W. asc.
- 20.00 Ascend more abruptly. Enter dense cedars, malpais boulders.
- 40.00 Set 1 in. iron post, 26 ins. in ground for 1/4 sec. cor. marked S. 24 1/4 on W., ^{and} S. 19 on E., from which A cedar 12 ins. diam. bears S. 70° 28' W. 167 lks. dist. marked 1/4 S. 24 B. S.
A cedar 16 ins. diam. bears N. 13° 36' E. 146 lks. dist. marked 1/4 S. 19 B. S.
- 46.00 Top of ascent - Desc.
- 57.70 Top of bluff of gulch, bears N. 75° W. ^{and} S. 75° E. Desc.
- 58.50 Bottom of gulch, 30 ft. deep, course N. 75° W. Asc.
- 59.00 Top of bank N. side of gulch. Proceed over rolling land, through dense cedars, good grama grass.
- 8.0,00 Set 3 in. iron post 24 ins. in ground for cor. of secs. 13. 18. 19 ^{and} 24, marked T. 21 N. on N.; R. 9 W. S. 13. on N. W.; R. 8 W. S. 18 on N. E.; S. 24 on S. W.; ^{and} S. 19 on S. E.; from which
A cedar 24 ins. diam. bears S. 43° 33' E. 141 lks. dist. marked T. 21 N. R. 8 W. S. 19 B. S.
A cedar 36 ins. diam. bears N. 83° 21' E. 115 lks. dist. marked T. 21 N. R. 8 W. S. 18 B. S.

2nd Guide Meridian West Through Tps. 21 N. Rs. 8 and 9 West.

A cedar 10 ins. diam. bears S. 33° 38' N. 194 lks. dist.
marked T. 21 N. R. 9 W. S. 24 B. S.

A cedar 12 ins. diam. bears N. 57° 01' W. 391 lks. dist.
marked T. 21 N. R. 9 W. S. 13 B. S.

Land rough and rocky 40.00 chs.; rolling 40.00 chs.
Soil: very rocky 40.00 chs.; a good quality of sandy
loam, 40.00 chs. covered with a good growth of
grama grass. Dense cedar and brush 60.00 chs.

N^o 7. 1910.

N^o 8: At 8^h 00^m a.m. l.m.t. I set of 16° 24' S. on
the decl. arc; 35° 12' N. on the lat. arc; and determining
a meridian with the solar at the cor. of secs 13, 18, 19
and 24; Thence I run

North between secs. 13 and 18

Ascending gradually over rolling land through
dense cedars.

30.00

Ascend more abruptly. Enter mountainous land.

Difference between measurements of 40.00 chs.
by two sets of chainmen is 16 lks.; position of
middle point

By 1st set, 40.08 chs.

By 2^d set, 39.91 chs.; the mean of which is

40.00

Set 1 in. iron post 26 ins. in ground for 1/4 sec. cor.
marked S. 13 1/4 on W.; S. 18 on E. from which

A cedar 8 ins. diam. bears S. 89° 00' E. 38 lks. dist.
marked 1/4 S. 18 B. S.

A piñon 8 ins. diam. bears N. 12° 28' W. 29 lks. dist.
marked 1/4 S. 13 B. S.

Ascend steep side of mountain over malpais
boulders and ledges of limestone.

55.00

Ascent becomes steeper over slide rock & slate,
through scattering cedars.

80.00

Set 3 in. iron post 24 ins. in ground for cor. of
secs. 7, 12, 13 and 18 marked T. 21 N. on N.; R. 9 W. S.
12 on N. W.; R. 8 W. S. 7 on N. E.; S. 13 on S. W.; and
S. 18 on S. E.; from which

A piñon 8 ins. diam. bears S. 74° 30' W. 207 lks. dist.

2nd Guide Meridian West Through Tps. 21 N. Ranges 8^{and} 9 West.

marked T. 21 N. R. 9 W. S. 13 B. T.

A piñon 8 ins. diam. bears N. 69° 08' W. 238 lks. dist.

marked T. 21 N. R. 9 W. S. 12 B. T.

A piñon 14 ins. diam. bears S. 85° 00' E. 171 lks. dist.

marked T. 21 N. R. 8 W. S. 18 B. T.

A piñon 12 ins. diam. bears N. 66° 31' E. 209 lks. dist.

marked T. 21 N. R. 8 W. S. 7 B. T.

Land rolling 30.00 Chs.; mountainous 50.00 Chs.

Dense cedar 55.00 Chs. Dense brush 80.00 Chs.

Soil light sandy loam mixed with gravel S. 30.00 Chs.; very rocky 50.00 Chs.

North between secs. 7^{and} 12

Ascending steep slope of mountain - angle 23° - over slide rock malpais boulders.

6.25 Top of bluff of mesa, bears N. 70° W. ^{and} S. 70° E.; 10.00 Chs. E. of point - continue to ascend through dense cedars

14.50 Edge of ³/₄ bears N. 80° E. ^{and} S. 80° W. Descend abruptly over mountainous land.

20.00 Bottom of rocky gulch, course N. E. asc. point of slope.

27.50 Top of point of slope: Descend over malpais and lime boulders

40.00 Set 1 in. iron post 26 ins. in ground for ¹/₄ sec. cor. marked S. 12' ¹/₄ on N.; ^{and} S. 7 on E., from which a cedar 8 ins. diam. bears S. 32° 32' E. 33 lks. dist. marked ¹/₄ S. 7 B. T.

Piñon branch 6 ins. diam. bears N. 79° 65' W. 21 lks. dist. marked ¹/₄ S. 12 B. T.

Nov 8, 1910.

Nov 9: at 7^h 50^m a.m. l.m.t. I set off 16° 41' S. on the decl. arc; 35° 13' 30" for the lat. arc; and determine a meridian with the solar at the ¹/₄ sec. cor. between secs. 7^{and} 12; thence I continue.

2nd Secs Meridian W. Through Tps 21 N. Ranges 8^{and} 9 West.

North between Secs. 7^{and} 12.
 Descending over rough, rocky ground through dense cedars.

80.00 Bottom of draw, course N.E. - Set 3 in iron post 24 ins. in ground for cor. of secs. 1, 6, 7^{and} 12, marked S. 21 N. on N.; R. 9 W., S. 1 on N.W.; R. 8 W. S. 6 on N.E.; S. 12 on S.W. ^{and} S. 7 on S.E.; from which a cedar 16 ins. diam. bears S. 56° 00' N., 26 lks. dist, marked S. 21 N. R. 9 W. S. 12 B.S.

A cedar 16 ins. diam. bears N. 80° 00' W., 18 lks. dist, marked S. 21 N. R. 9 W. S. 1 B.S.

A cedar 14 ins. diam. bears S. 48° 35' E., 24 lks. dist. marked S. 21 N. R. 8 W. S. 7 B.S.

A cedar 14 ins. diam. bears N. 36° 20' E., 73 lks. dist. marked S. 21 N. R. 8 W. S. 6 B.S.

Land rough ^{and} mountainous. Dense cedars 73.75 Chs.
 Very little soil ^{and} very rocky.

North between Secs. 1^{and} 6
 Through dense cedars ^{and} buck brush

1.00 Ascend slope diagonally, on E. slope of ridge.
 28.00 Top of rocky ridge bears N. 20° E. ^{and} S. 20° W.

Descend slope diagonally on W. side of ridge

40.00 Set 1 in. iron post 26 ins. in ground for 14 sec. cor. marked S. 1, 4 on W. ^{and} S. 6 on E. from which a piñon 9 ins. diam. bears S. 43° 30' E., 68 lks. dist. marked 1/4 S. 6 B.S.

A piñon 8 ins. diam. bears S. 44° 50' W., 76 lks. dist. marked 1/4 S. 1 B.S.

73.75 Foot of mountain. Leave cedars ^{and} Enter open "Suckayou" (?) Valley.

80.00 Set 3 in. iron post 24 ins. in ground for cor. of Tps. 21^{and} 22 N., Rs. 8^{and} 9 W., marked S. 22 N. on N. R. 9 W., S. 36 on N.W.; R. 8 W. S. 31 on N.E.; S. 21 N. on S.; S. 1, R. 9 W. on S.W.; ^{and} R. 8 W., S. 6 on S.E. dig pits 24x24x12 ins. on each line, N., E., ^{and} W. 4 ft., ^{and} S. of cor. 8 ft. dist.; ^{and} raise a mound of earth, 5 ft. base, 2 1/2 ft. high S. of cor.

2nd Guide Meridian West. Through Tps. 21 N. Rs. 8th and 9th West.

Land, rough ^{and} mountainous 73.75 Chs.; rolling 6.25 Chs.; Soil very rocky for 73.75 Chs.; for 6.25 Chs. a good quality of light reddish brown soil with a good growth of grama grass.

Nov 9, 1910

2nd Guide Meridian West through Tps. 22 N. Nov 10; At 8^h 12^m a.m. l.m.t. I set off 16° 59' S. on the decl. arc; 35° 15' N. on the lat. arc; and determine a meridian with the solar at the cor. of Tps. 21st and 22nd N. Rs. 8th and 9th W. Thence I run North between secs. 31st and 36th.

Over open valley, without trees or brush; but having an excellent growth of grama grass.

40.00 Set 1 in. iron post 26 ins. in ground for 1/4 sec. cor. marked S. 36 1/4 on W.; ^{and} S. 31 on E.; dig pits 18x18x12 ins. N. ^{and} S. of post 3 ft. dist. ^{and} raise a mound of earth 3 1/2 ft. base, 1 1/2 ft. high N. of cor.

80.00 Set 3 in. iron post 24 ins. in ground for cor. of secs. 25, 30, 31 ^{and} 36, marked J. 22 N. on N.; R. 9 W. S. 25 on N.W.; R. 8 W. S. 30 on N.E.; S. 36 on S.W.; ^{and} S. 31 on S.E.; dig pits 18x18x12 ins. in each sec. 5 1/2 ft. dist. ^{and} raise a mound of earth 4 ft. base, 2 ft. high N. of cor.

Land rolling. No timber; Soil sandy loam mixed with gravel. Good growth of grama grass.

35.30 North between secs. 25th and 30th
Road to Seligman, bears N. 65° E. ^{and} S. 65° W.

40.00 Set 1 in. iron post 26 ins. in ground for 1/4 sec. cor. marked S. 25 1/4 on W.; ^{and} S. 30 on E.; dig pits 18x18x12 ins. N. ^{and} S. of stone 3 ft. dist. ^{and} raise a mound of earth 3 1/2 ft. base, 1 1/2 ft. high N. of cor.

80.00 Set 3 in. iron post 24 ins. in ground for cor. of secs. 19, 24, 25 ^{and} 30, marked J. 22 N. on N. R. 9 W. S. 24 on N.W.; R. 8 W. S. 19 on N.E.; S. 25 on S.W.; ^{and} S. 30 on S.E.; dig pits 18x18x12 ins. in each

2nd Guide Meridian West. Through Tps. 22N. Rs. 8th and 9 West.

sec. 5 1/2 ft. dist.; and raise a mound of earth 4 ft. base, 2 ft. high. W. of cor.
Land rolling; No timber; Soil sandy loam mixed with gravel. Drainage to S.W.

North between Secs. 19th and 24.

40.00

Set 1 in. iron post 26 ins. in ground for 1/4 sec. cor. marked S. 24 1/4 on W.; and S. 19 on E.; dig pits 18x18x12 ins. N. and S. of post 3 ft. dist. and raise a mound of earth 3 1/2 ft. base, 1 1/2 ft. high W. of cor.

80.00

Set 3 in. iron post 24 ins. in ground for cor. of sec. 13, 18, 19th and 24. marked S. 22N. on N.; R. 9 W. S. 13 on N.W.; S. 24 on S.W.; R. 8 W., S. 18 on N.E.; and S. 19 on S.E.; dig pits 18x18x12 ins. in each sec. 5 1/2 ft. dist. and raise a mound of earth 4 ft. base, 2 ft. high W. of cor.
Land rolling, Soil sandy loam with good grama grass-

North between Secs. 13th and 18

12.20

Road to Seligman bears E. and W.

40.00

Set 1 in. iron post 26 ins. in ground for 1/4 sec. cor. marked S. 13 1/4 on W.; and S. 18 on E.; dig pits 18x18x12 ins. N. and S. of post 3 ft. dist. and raise a mound of earth 4 ft. base, 2 ft. high W. of cor.

80.00

Set 3 inch iron post 24 ins. in ground for cor. of sec. 7, 12, 13th and 18 marked S. 22N on N.; R. 9 W. S. 12 on N.W.; R. 8 W. S. 7 on N.E.; S. 13 on S.W.; and S. 18 on S.E.; dig pits 18x18x12 ins. in each sec. 5 1/2 ft. dist. and raise a mound of earth 3 1/2 ft. base, 1 1/2 ft. high W. of cor.

Land rolling, Soil sandy loam mixed with lime gravel.

2nd Guide Meridian West Through Tps. 22 N. Ranges 8th and 9th West.

- North between Secs. 7th and 12th.
- 40.00 Set 1 in. iron post 26 ins. in ground for $\frac{1}{4}$ sec. cor. marked S. 12 $\frac{1}{4}$ on N.; ^{and} S. 7 on E.; dig pits 18x18x12 ins. N. ^{and} S. of post 3 ft. dist. ^{and} raise a mound of earth 3 $\frac{1}{2}$ ft. base, 1 $\frac{1}{2}$ ft. high N. of cor.
- 80.00 Set 3 in. iron post 24 ins. in ground for cor. of secs. 1, 6, 7 ^{and} 12 marked T. 22 N. on N.; R. 9 W. S. 1 on N.W.; R. 8 W. S. 6 on N.E.; S. 12 on S.W. ^{and} S. 7 on S.E.; dig pits 18x18x12 ins. in each sec. 5 $\frac{1}{2}$ ft. dist. ^{and} raise a mound of earth 4 ft. base, 2 ft. high N. of cor.
- Land rolling, Soil sandy loam mixed with lime gravel.

- North Bet. Secs. 1st and 6
- 40.00 Set 1 in. iron post 26 ins. in ground for $\frac{1}{4}$ sec. cor. marked S. 1 $\frac{1}{4}$ on N. ^{and} S. 6 on E., dig pits 18x18x12 ins. N. ^{and} S. of cor. 3 ft. dist. ^{and} raise a mound of earth 3 $\frac{1}{2}$ ft. base, 1 $\frac{1}{2}$ ft. high N. of cor.
- 80.00 Set 3 in. iron post 24 ins. in ground for cor. of Tps. 22 ^{and} 23 N. Rs. 8 ^{and} 9 W. marked T. 23 N. on N.; R. 9 W. S. 36 on N.W.; R. 8 W. S. 31 on N.E.; S. 1, R. 9 W. on S.W.; S. 6 R. 8 W. on S.E.; ^{and} T. 22 N. on S.; dig pits 24x24x12 ins. on each line N., E. ^{and} W. 4 ft. ^{and} S. of post 8 ft. dist. ^{and} raise a mound of earth, 5 ft. base, 2 $\frac{1}{2}$ ft. high S. of cor.
- Land rolling, soil sandy loam.

2nd Guide Meridian West through Tps. 23 N.

From the cor. of Tps. 22 ^{and} 23 N. Rs. 8 ^{and} 9 W.
Run

- North between Secs. 31st and 36.
- 40.00 Set an iron post, 3 ft. long, 1 in. in diam. 26 ins. in ground for $\frac{1}{4}$ sec. cor., marked on brass cap S. 36 $\frac{1}{4}$ on N. ^{and} S. 31 on E. half; dig pits 18x18x12 ins. N ^{and} S. of

2nd Guide Meridian West Through Tps. 23 N. Ranges 8th & 9th West.

post 3 ft. dist. ^{and} raise a mound of earth 3 $\frac{1}{2}$ ft. base, 1 $\frac{1}{2}$ ft. high N. of cor.

Nov 10. 1910.

Nov 11: At 8^h 05^m a.m. l.m.t. I set off 17° 15' S. on the decl. arc; 35° 21' N. on the lat. arc; ^{and} at the $\frac{1}{4}$ sec. cor. bet. secs. 31 ^{and} 36, T. 23 N. R. 8 ^{and} 9 W. I determine a meridian with the solar; an opening which I had cut through a group of trees on mountain to the south is plainly visible ^{and} on my line; Thence I continue

North bet. Secs. 31 ^{and} 36

Over rolling, open valley land, the drainage of which from my line is to the south ^{and} west.

80.00

Set an iron post 3 ft. long, 3 ins. diam. 24 ins. in ground for cor. of secs. 25, 30, 31 ^{and} 36, marked T. 23 N. on N.; R. 9 W. S. 25 on N.W.; R. 8 W. S. 30 on N.E.; S. 31 on S.E.; ^{and} S. 36 on S.W. of cross in brass cap; dig pits 18x18x12 ins. in each sec. 5 $\frac{1}{2}$ ft. dist. ^{and} raise a mound of earth 4 ft. base; 2 ft. high N. of cor.

Land smooth open valley containing a good growth of grama grass.: Soil a loose sandy loam mixed with small lime gravel to a depth of one foot: Subsoil hard clay.

North between Secs. 25 ^{and} 30

40.00

Set an iron post, 3 ft. long, 1 in. diam. 26 ins. in ground for $\frac{1}{4}$ sec. cor., marked on brass cap

S. 25 $\frac{1}{4}$ on N. ^{and}

S. 30 on E. half;

dig pits 18x18x12 ins. N. ^{and} S. of post 3 ft. dist.

^{and} raise a mound of earth 3 $\frac{1}{2}$ ft. base, 1 $\frac{1}{2}$ ft. high N. of cor.

80.00

Set an iron post 3 ft. long, 3 in. in diam. 24 ins. in ground for cor. of secs. 19, 24, 25, 30, mtd. T. 23 N. on N.;

R. 9 W.; S. 24 on N.W.;

2nd Guide Meridian W. Through Tps. 23 N. Rs. 8th & 9 West.

R. 8 W.; S. 19 on N.E.;
 S. 30 on S.E.; ^{and}
 S. 25 on S.W. quadrant; dig pits 18x18x12 ins. in
 each sec. 5 1/2 ft. dist. ^{and} raise a mound of earth
 4 ft. base, 2 ft. high W. of cor.
 Land rolling. Soil sandy loam mixed with
 small gravel. Good grass on entire line.

North between sees. 19th ^{and} 24
 H.V. 00 Set an iron post, 3 ft. long, 1 in. in diam. 26 ins
 in ground, for 1/4 sec. cor., marked on brass cap
 S. 24 1/4 on W. ^{and}
 S. 19 on E. half;
 dig pits 18x18x12 ins. N. ^{and} S. of post, 3 ft. dist.
^{and} raise a mound of earth 3 1/2 ft. base, 1 1/2 ft.
 high W. of cor.

Nov 11, 1910: I set off 17° 20' S. on the decl. arc; ^{and}
 at noon observe the sun on the meridian; the
 resulting lat. is 35° 23' N. which varies some-
 what from the true lat.

At the moment of the meridian passage of the
 sun, my watch stood at 11^h 44^m 15^s; it was
 therefore 11^s fast.

80.00 Set an iron post, 3 ft. long, 3 ins. diam. 24 ins. in
 ground for cor. of sees. 13, 18, 19th & 24, marked on the
 brass cap:

T. 23 N.; on N.;

R. 9 W.; S. 13, on N.W.;

R. 8 W.; S. 18, on N.E.;

S. 19 on S.E.; ^{and}

S. 24 on S.W. quadrant;

dig pits 18x18x12 ins. in each sec. 5 1/2 ft. dist. ^{and}
 raise a mound of earth 4 ft. base, 2 ft. high W.
 of cor.

Land rolling. Soil sandy mixed with small
 gravel. A good growth of grama grass.

2nd Guide Meridian N. Through Tps. 23 N. Rr. 8^{and} 9 West.

| | |
|-------|--|
| | North between Secs. 13 ^{and} 18 |
| 40.00 | Set an iron post, 3 ft. long, 1 in. in diam. 26 ins. in ground for $\frac{1}{4}$ sec. cor., marked on brass cap: S. 13 $\frac{1}{4}$ on N.; ^{and} S. 18 on E. half; dig pits 18x18x12 ins. N. ^{and} S. of post, 3 ft. dist. ^{and} raise a mound of earth 3 $\frac{1}{2}$ ft. base; 1 $\frac{1}{2}$ ft. high N. of cor. |
| 75.00 | Begin to ascend out of valley; Enter rolling hills with scattering cedars. |
| 80.00 | Set an iron post 3 ft. long, 3 in. in diam. 24 ins. in ground for cor. of secs. 7, 12, 13 ^{and} 18 marked on brass cap: T. 23 N., on N.; R. 9 W. - S. 12, on N.W.; R. 8 W. - S. 7, on N.E.; S. 18 on S.E.; ^{and} S. 13 on S.W. of quadrant.; dig pits 18x18x12 ins. in each sec. 5 $\frac{1}{2}$ ft. dist. ^{and} raise a mound of earth 4 ft. base; 2 ft. high N. of cor. Land rolling; Soil, a sandy loam mixed with fine gravel for 75.00 Chs.; for 5.00 Chs. soil is rocky ^{and} shallow. A good growth of grama grass covers the mile. Scattering cedars & brush 5.00 Chs. |

| | |
|-------|---|
| | North between secs. 7 ^{and} 12 Through scattering cedars ^{and} brush. |
| 40.00 | Set an iron post, 3 ft. long, 1 in. in diam. 26 ins. in ground for $\frac{1}{4}$ sec. cor., marked on brass cap S. 12 $\frac{1}{4}$ on N., ^{and} S. 7 on E. half; dig pits 18x18x12 ins. N. ^{and} S. of post 3 ft. dist. ^{and} raise a mound of earth 3 $\frac{1}{2}$ ft. base, 1 $\frac{1}{2}$ ft. high N. of cor. |
| 80.00 | Set an iron post, 3 ft. long; 3 ins. diam. 24 ins. |

2nd Guide Meridian West, Through Tps. 23 N. Rs. 8^{and} 9 West.

in the ground for cor. of secs. 1, 6, 7^{and} 12, marked on the brass cap.

T. 23 N. on N.;

R. 9 W.; S. 1 on N. W.;

R. 8 W.; S. 6 on N. E.;

S. 7 on S. E.; ^{and}

S. 12 on S. W. of quadrant.

dig pits 18x18x12 ins. in each sec. 5 1/2 ft. dist. ^{and} raise a mound of earth 4 ft. base, 2 ft. high W. of cor.

Land rolling low hills - Scattering cedars. Soil, a brown clay or adobe mixed with lime gravel. A good growth of grama grass covers the hills.

Nov 11, 1910.

Nov 12: At 8^h 00^m a.m. l.m.t. I set off 17° 32' S. on the decl. arc; 35° 24 1/2' N. on the lat. arc; and determine a meridian with the solar at the cor. of secs. 1, 6, 7^{and} 12; thence I run

North between Secs. 1^{and} 6.

Ascending over rolling hilly land, through scattering cedars ^{and} brush.

40.00 Set an iron post, 3 ft. long, 1 in. in diam. 26 ins. in ground for 1/4 sec. cor., marked on brass cap.

S. 1 1/4 on N.; ^{and}

S. 6 on E. half;

dig pits 18x18x12 ins. N. ^{and} S. of post 3 ft. dist. ^{and} raise a mound of earth 3 1/2 ft. base, 1 1/2 ft. high W. of cor.

80.00 Set an iron post 3 ft. long, 3 ins. diam. 24 ins. in ground for cor. of Tps. 23^{and} 24 N. Rs. 8^{and} 9 W. marked on brass cap.

T. 24 N. on N.;

R. 9 W., S. 36 on N. W.;

R. 8 W. S. 31 on N. E.;

S. 6 - R. 8 W. - on S. E.;

2nd Guide Meridian N. Through Tps. 23 N. Rs. 8^{and} 9 West.

S. 1 - R. 9 W. on S. W.; ^{and}
 S. 23 N. on S.;
 dig pits 24x24x12 ins. on each line, N., E. ^{and} W.
 4 ft. ^{and} S. of cor. 8 ft. dist.; ^{and} raise a mound
 of earth 5 ft. base, 2 1/2 ft. high S. of cor.
 Land rolling hills; Soil a dark clay
 mixed with lime gravel.; Good growth of
 grama grass covers the mile

2nd Guide Meridian N. Through Tps. 24 N. Rs. 8^{and} 9 W.
 North between secs. 31 ^{and} 36

40.00

Ascending over rough hilly land, through
 scattering cedars

Set an iron post, 3 ft. long, 1 in. in diam. 26
 ins. in ground for 1/4 sec. cor.; marked on brass
 cap;

S. 36 1/4 on W.; ^{and}

S. 31 on E. half; from which
 A cedar 18 ins. diam. bears S. 78° 46' E. 94 lks.
 dist. marked 1/4 S. 31 B.S.

A cedar 6 ins diam. bears N. 11° 00' W. 263 lks.
 dist. marked 1/4 S. 36 B.S.

70.50

Top of rise, desc.

80.00

Set an iron post 3 ft. long, 3 ins. diam. 24 ins.
 in ground for cor. of secs. 25, 30, 31 ^{and} 36, marked
 on brass cap:

T. 24 N. on N.;

R. 9 W. - S. 25 on N. W.;

R. 8 W. - S. 30 on N. E.;

S. 31 on S. E.; ^{and}

S. 36 on S. W. of quadrant.; from which
 A cedar 14 ins. diam. bears N. 10° 30' E. 96 lks.
 dist. marked T. 24 N. R. 8 W. S. 30 B.S.; dig pits

18x18x12 ins. in secs. 25, 31 ^{and} 36, 5 1/2 ft. dist. ^{and} raise
 a mound of earth 4 ft. base, 2 ft. high W. of cor.

Land broken ^{and} hilly; covered with scattering cedars.
 Soil rocky ^{and} of no value except for grazing.

7th Guide Meridian N. Through Tps. 24 N. Rs. 8th and 9th West.

| | | |
|-------|--|--|
| | | North between secs. 25 th and 30 |
| | | Descending over broken ground. |
| 10.30 | | Head of draw, course S.E. Asc. |
| 30.00 | | Top of ascent; Descend through dense cedars. |
| 40.00 | | Set an iron post, 3 ft. long, 1 in. diam, 26 ins. in ground for $\frac{1}{4}$ sec. cor. marked S. 25 th $\frac{1}{4}$ on N.; ^{and} S. 30 on E. half of brass cap.; from which a cedar 14 ins. diam. bears S. 50° 08' E. 62 lks. dist. marked $\frac{1}{4}$ S. 30 B.T. |
| | | A piñon 6 ins. diam. bears N. 82° 04' W.; 53 lks. dist. marked $\frac{1}{4}$ S. 25 B.T. |
| 62.00 | | Bottom of draw, course N. W. - Asc. |
| 80.00 | | Top of ascent - Set an iron post, 3 ft. long, 3 ins. diam. 24 ins. in ground for cor. of secs. 19. 24. 25 th and 30, marked on brass cap; T. 24 N. on N.; R. 9 W. - S. 24 on N. W.; R. 8 W. - S. 19 on N. E.; S. 30 on S. E.; ^{and} S. 25 on S. W. of quadrant; from which a cedar 16 ins. diam. bears N. 35° 55' E. 59 lks. dist. marked T. 24 N. R. 8 W. S. 19 B.T. A cedar branch 6 ins. diam. bears N. 38° 40' W. 27 lks. dist. marked T. 24 N. R. 9 W. S. 24 B.T. A cedar 12 ins. diam. bears S. 48° 30' E. 29 lks. dist. marked T. 24 N. R. 8 W. S. 30 B.T. A cedar 10 ins. diam. bears S. 29° 20' W. 42 lks. dist. marked T. 24 N. R. 9 W. S. 25 B.T. |
| | | Land rough ^{and} hilly. Dense cedars ^{and} piñons 50.00 Chs.: Soil rocky ^{and} of no value except for grazing purposes - A good growth of grama grass covers the mile. |
| | | Nov 12, 1910. |

2nd Guide Meridian W. Through Tps. 24 N. Rs. 8th and 9 West.

- Nov¹⁶: Continuous rain^{and} showers on the 13th 14th and 15th prevented field work.: At 8^h 05^m a.m. l.m.t. I set off 18° 35' S. on the decl. arc; 35° 27' N. on the lat. arc; and determine a meridian with the solar at the cor. of secs. 19, 24, 25^{and} 30. Tp. 24 N. Rs. 8^{and} 9 W.; thence I run North between secs. 19^{and} 24.
- Descending over rough hilly land through dense cedar^{and} brush.
- 13.50 Bottom of gulch, course W., ascend over limestone boulders.
- 36.00 Top of ascent of W. slope - Draw, course N., about 10.00 chs. W. - Desc. diagonally.
- 40.00 Set an iron post, 3 feet long, 1 ins. in diam. 26 ins. in ground for 1/4 sec. cor., marked on brass cap:
- S. 24 1/4 on W.; and
S. 19 on E. half; from which
A cedar 10 ins. diam. bears S. 64° 00' W. 29 lks. dist. marked 1/4 S. 24 B.S.
- 80.00 Set an iron post 3 ft. long, 3 ins. in diam. 24 ins. in ground for cor. of secs. 13, 18, 19^{and} 24 marked on brass cap:
- T. 24 N. on N.;
R. 9 W. - S. 13. on N. W.;
R. 8 W. - S. 18 on N. E.;
S. 19 on S. E.; and
S. 24 on S. W. in quadrant; from which
A cedar 12 ins. diam. bears N. 44° 18' E. 47 lks. dist. marked T. 24 N. R. 8 W. S. 18 B.S.
A cedar 16 ins. diam. bears N. 50° 00' W. 15 lks. dist. marked T. 24 N. R. 9 W. S. 13 B.S.
A cedar 8 ins. diam. bears S. 81° 30' E. 12 lks. dist. marked T. 24 N. R. 8 W. S. 19 B.S.
A cedar 7 ins. diam. bears S. 61° 38' W. 17 lks. dist. marked T. 24 N. R. 9 W. S. 24 B.S.
- Land rough^{and} hilly covered with dense cedar^{and} brush. Soil rocky^{and} only good for grazing.

2nd Guide Meridian W. Through Tps. 24 N. Rs. 8th & 9 West.

| | |
|---|--|
| <p>3.70 10.00 13.40 40.00</p> | <p>North between secs. 13^{and} 18. Descending through dense cedars ^{and} brush. Bottom of draw, course N. 60° W. Asc. Top of ascent - Desc. Bottom of draw, course N. 80° E. - Asc. Set an iron post 3 ft. long, 1 in. in diam. 26 ins in ground for ¹/₄ sec. cor. marked on brass cap: S. 13¹/₄ on N.; ^{and} S. 18 on E. half, from which A cedar 24 ins. diam. bears S. 32° 10' W. 62 lks. marked ¹/₄ S. 13 B.T. A cedar 6 ins. diam. bears S. 34° 40' E. 160 lks. dist. marked ¹/₄ S. 18 B.T.</p> |
| <p>41.40 80.00</p> | <p>Gulch, course E., asc. over rough hills. Set an iron post 3 ft. long, 3 ins. diam. 24 ins in ground for cor. of secs. 7, 12, 13 ^{and} 18, marked on Brass cap: T. 24 N. on N.; R. 9 W. - S. 12 on N.W.; R. 8 W. - S. 7 on N.E.; S. 18 on S.E.; ^{and} S. 13 on S.W. of quadrant, from which A cedar 12 ins. diam. bears S. 57° 00' W. 41 lks. dist. marked T. 24 N. R. 9 W. S. 13 B.T. A cedar 10 ins. diam. bears S. 28° 30' E. 15 lks. dist. marked T. 24 N. R. 8 W. S. 18 B.T. A cedar 15 ins. diam. bears N. 56° 00' W. 85 lks. dist. marked T. 24 N. R. 9 W. S. 12 B.T. A cedar 14 ins. diam. bears N. 67° 44' E. 79 lks. dist. marked T. 24 N. R. 8 W. S. 7 B.T. Land rough ^{and} hilly ^{and} covered with dense cedars ^{and} brush.: Soil rocky ^{and} only fit for grazing pur- poses. Nov 16. 1910.</p> |

2nd Guide Meridian W. Through Tps. 24 N. Rs. 8th and 9th West.

| | |
|-------|--|
| | Nov 17: 1910: At 7 ^h 50 ^m a.m. l.m.t. I set off 18° 49' S. on the decl. arc; 35° 28' 30" on the lat. arc; and determined a meridian with the solar at the cor. of secs. 7, 12, 13 th and 18; thence I run North between secs. 7 th and 12. |
| | Ascending through dense cedars. |
| 26.29 | A pile of stones on line. |
| 8.00 | Ravine, course N. 70° E., ascend E. slope of high hill diagonally |
| 35.00 | Top of slope. Desc. abruptly. |
| 37.50 | Bottom of gulch, course E., Asc. steep rocky slope |
| 40.00 | Set an iron post 3 ft. long, 1 in. in diam. 26 ins. in ground for 1/4 sec. cor., marked on brass cap: S. 12 1/4 on N.; and S. 7 on E. half, from which |
| | A piñon 14 ins. diam. bears N. 48° 25' W. 95 lbs. lbs. dist. marked 1/4 S. 12 B.T. ; |
| | A piñon 6 ins. diam. bears N. 29° 50' E. 88 lbs. dist. marked 1/4 S. 7 B.T. |
| 41.75 | Top of point of ridge, bears E. and W., Descend steep slope. |
| 47.00 | Bottom of gulch, course N.E., Ascend steep slope diagonally. |
| 57.00 | Top of ascent, Desc. |
| 60.65 | Bottom of gulch, course N. 75° E., Ascend steep slope. |
| 64.38 | Top of point of slope. Descend steep slope. |
| 68.90 | Foot of slope. |
| 69.08 | Intersect E. of Santa ^{Fe} Pacific R.R. 171 ft. S. 40° 33' E. of E. end of curve No 483. - Sta. 8674 + 92 - R.R. bears N. 40° 33' W. and S. 40° 33' E. |
| | Descend through scattering cedars, good grass and soil mixed with fine gravel. |
| 80.00 | Set an iron post, 3 ft. long, 3 ins. diam. 24 ins. in ground for cor. of secs. 1, 6, 7 th and 12, marked on brass cap: T. 24 N. on N.; R. 9 W. - S. 1 on N. W.; R. 8 W. - S. 6 on N. E.; |

2nd Guide Meridian W. Through Tps. 24 N. Rs. 8^{and} 9 West.

S. 7 on S.E.; ^{and}
 S. 12 on S. W. of quadrant; from which
 A cedar 7 ins. diam. bears S. 10° 25' W. 272 lks.
 dist. marked T. 24 N. R. 9 W. S. 12 B.T.
 A cedar 8 ins. diam. bears N. 81° 29' E. 173 lks. dist.
 marked T. 24 N. R. 8 W. S. 6 B.T.
 A cedar 7 ins. diam. bears S. 15° 23' E. 279 lks. dist.
 marked T. 24 N. R. 8 W. S. 7 B.T. No other trees available.
 Raise a mound of stone 2 ft. base, 1 1/2 ft. high W. of cor.
 Land mountainous ^{and} covered with dense cedars
^{and} pines 67.00 Chs.; rolling 13.00 Chs.
 Soil; 69.00 Chs. rocky ^{and} of no value except for
 grazing; 13.00 Chs. soil is of good quality of sandy
 loam mixed with small gravel.
 A good growth of grama grass covers the mile.

North between secs. 1 ^{and} 6.

Descending gradual slope through scattering
cedars ^{and} brush.

17.23

Road from Yampai to Seligman, bears E. ^{and} W.
Foot of descent. Proceed over rolling land.

40.00

Set an iron post 3 ft. long, 1 in. in diam. 26 ins.
in ground for 1/4 sec. cor., marked on brass cap:

S. 1 1/4 on W.; ^{and}

S. 6 on E. half, dig pits 18x18x12 ins. N. ^{and} S.
of post 3 ft. dist. ^{and} raise a mound of earth
3 1/2 ft. base, 1 1/2 ft. high W. of cor.

73.49

Intersect 6th Standard Parallel North 19.18 Chs. W.
of the standard cor. of sections 31 and 32
T. 25 N. R. 8 W.

Set an iron post 3 ft. long, 3 ins. in diam. 24 ins.
in ground, for closing cor. of Tps. 24 N. Rs. 8 ^{and} 9
W. marked on brass cap:

C.C. south of center;

T. 25 N. R. 8 W. - S. 31 in N. half;

T. 24 N. in S. half;

S. 6, R. 8 W. in S.E.; ^{and}

2nd Guide Meridian W. Through Tps. 24 N. Rs. 8^{and} 9 West.

S. 1. R. 9 W., in S.W. quadrant; from which
A piñon 14 ins. diam. bears S. 50° 48' E. 495 lks.
dist. marked T. 24 N. R. 8 W. S. 6 C.C. B.T.

A cedar branch 6 ins. diam. bears S. 37° 55' W. 168 lks.
dist., marked T. 24 N. R. 9 W. S. 1 C.C. B.T.

Land rolling. Scattering cedars.

Soil; a good quality of sandy loam mixed
with gravel to a depth of one foot, below which
it is very hard clay.

Nov 17, 1910.

— General Description. —

The line through townships 21 N. Rs. 8^{and} 9
W. passes over a rough, broken country cov-
ered with cedars, piñons, and a good growth of
grama grass.

Through Tps. 22^{and} 23 N. the line passes through
a comparatively smooth, open valley, known
locally as Tuckeyou Plains, near its centre.

The valley is about five miles wide and
contains an abundant growth of grama grass, but
is entirely devoid of natural water.

Tp. 24 N., again, is composed of rough hills
covered with a dense growth of cedars, piñons
& grama grass, and is chiefly valuable for the
cedar wood it contains and grazing.

There are no settlements or ranches in
the vicinity of the line, neither is there
any living water.

Nov 17-1910.

W. O. F. Co.
Transitman.

I hereby certify that in the survey of the Second
Guide Meridian West, through townships 21, 22, 23
and 24 North two sets of chainmen were employed
on each ^{and} every mile.

W. J. Jacobson
Transitman

FINAL OATHS OF DEPUTY SURVEYOR AND HIS ASSISTANTS.

LIST OF NAMES.

A list of the names of the individuals employed by W. O. Secor
Transitman
United States ~~Deputy~~ Surveyor, to assist in running, measuring, and
marking the lines and corners described in the foregoing field notes of the survey of the

Second Guide Meridian West,

showing the respective capacities in which they acted:

- Theodore Alden Chainman.
- C. J. Schwartz Chainman.
- Carl Barandon Chainman Moundman.
- J. H. McCall Chainman Moundman.
- George Etz Moundman Assman.
- Paul Dial Assman.
- Flagman.

FINAL OATH OF ASSISTANTS.

We hereby certify that we assisted W. O. Secor
Transitman
United States ~~Deputy~~ Surveyor, in surveying all

those parts or portions of the Second Guide Meridian West through
Sp. 21, 22, 23, and 24 North between Ranges 8 and 9 West
of the Gila and Salt River Base and Meridian,

..... of the
..... meridian, Territory of Arizona, which are represented
in the foregoing field notes as having been surveyed by him and under his direction; and that said survey
has been in all respects, to the best of our knowledge and belief, well and faithfully surveyed, and the
corner monuments established, according to the instructions furnished by the United States Surveyor
General for Arizona

- C. J. Schwartz Chainman.
- Theodore Alden Chainman.
- J. H. McCall Chainman Moundman.
- George Etz Moundman.
- Carl Barandon Chainman Assman.
- Paul Dial Assman.
- Flagman.

Subscribed and sworn to before me this 17th
day of November, 1910

W. O. Secor
Transitman



167
24

FINAL OATH OF UNITED STATES DEPUTY SURVEYOR.

I, W. O. Secor, Transitman, United States Deputy Surveyor, do solemnly swear that, in pursuance of a contract received from United States Surveyor General for Arizona, bearing date of the day of Jan, 1911, I have well, faithfully, and truly, in my own proper person, and in strict conformity with the instructions furnished by the United States Surveyor General for Arizona, the Manual of Surveying Instructions, and the laws of the United States, surveyed all those parts or portions of the Second Guide Meridian West through townships 21, 22, 23 and 24 North, between ranges 8 and 9 West of the Gila and Salt River Base and Meridian of the Territory of Arizona, which are represented in the foregoing field notes as having been surveyed by me, and under my direction; and I do further solemnly swear that all the corners of said survey have been established and perpetuated in strict accordance with the Manual of Surveying Instructions, and the special written instructions of the United States Surveyor General for Arizona and in the specific manner described in the field notes, and that the foregoing are the original field notes of such survey.

W. O. Secor
United States Deputy Surveyor.
Transitman

Subscribed by said W. O. Secor, and sworn to before me }
this 17th day of Jan, 1911



my com
Expires Jan 16, 1915
William Grant
Notary Public

APPROVAL.

OFFICE OF THE UNITED STATES SURVEYOR GENERAL,

Tucson, Ariz. Mar. 15, 1911

The foregoing field notes of the survey of the Second Guide Meridian through Tps 21, 22, 23 + 24 North Gila and Salt River Base and Meridian Arizona

executed by W. O. Secor, U. S. Transitman
under his contract No. 7, dated August 25, 1910, having been critically examined, and the necessary corrections and explanations made, the said field notes, and the surveys they describe, are hereby approved.

Frank S. Ingalls
United States Surveyor General

I certify that the foregoing transcript of the field notes of the above-described surveys in Arizona, has been correctly copied from the original notes on file in this office.

United States Surveyor General.