

2248

4-679.

750  
AUG 20, 1910

Accepted by E. L. D. Little  
E. dated Nov 4 1912

Book B.

BOOK 2248

2248

# FIELD NOTES

OF THE SURVEY OF THE

South Boundary T. 7 N., R. 13 E.

South Boundary T. 7 N., R. 14 E.

West Boundary T. 7 N., R. 14 E.

East Boundary T. 7 N., R. 14 E.

North Boundary T. 7 N., R. 14 E.

2248

West Boundary T. 8 N., R. 14 E.

East Boundary T. 8 N., R. 14 E.

2248

South Boundary T. 7 N., R. 15 E.

North Boundary T. 7 N., R. 15 E.

North Boundary T. 9 N., R. 15 E.

Of the Gila and Salt River Base and Meridian,  
Arizona.

AS SURVEYED BY

Jesse B. Wright, United States Deputy Surveyor,

Under his Contract No. 160, dated October 2, 1909

Survey commenced June 2, 1910

Survey completed June 20, 1910

2248

2248

151  
1A

BOOK 2248

NAMES AND DUTIES OF ASSISTANTS.

James M. Barney, Chainman.

Edgar M. Darnall, Chainman.

Chas. E. Bean, Moundman.

Ben J. Kinsey, Axeman.

Jose N. Lopez, Axeman.

Francisco Gutierrez, Flagman.

6-151

T. 7 N. R. 13 E.

31	32	33	34	35
1	2	3	3	4
6	5	4	3	2

T. 6 N. R. 13 E.

182  
18

BOOK 2248

# INDEX

31 37	32 37	33 38	34 39	39	
6	5	4	3	2	1
7	8	9	10	11	12
18	17 T 9 N, R 15 E.	16	15	14	13
19	20	21	22	23	24
30	29	28	27	26	25
31	32	33	34	35	36

INDIAN RES.  
FORT APACHE

13

12 12 7

13 11 18

24 11 19

25 10 30

36 10 31

12 35 7 153  
1C

13 34 18

T 8 N.  
R. 15 E.

24 34 19

BOOK 2248

25 33 30

INDEX DIAGRAM.

32 33 34 35

36 33

25	25	26	27	27	28	29	29	30	30
8	6	5	4	3	2	1	24	6	5
8	7	8	9	10	11	12	23	7	3
7	18	17	16	15	14	13	23	18	3
7	19	20	21	22	23	24	22	19	3
6	30	29	28	27	26	25	22	30	3
6	31	32	33	34	35	36	21	31	34

T. 7 N. R. 14 E.

T. 7 N.  
R. 15 E.

Triangulation

36

4

1

14

6

14

5

4

3

15

2

16

1

31 32 33 34

17 17 18 18

6 5 4 3

T. 6 N. R. 14 E.

PRELIMINARY OATHS OF ASSISTANTS.

WE, James M. Barney, and Edgar M. Darnall  
do solemnly swear that we will well and faithfully execute the duties of chainmen; that we will level the chain upon even and uneven ground, and plumb the tally pins, either by sticking or dropping the same; that we will report the true distances to all notable objects, and the true lengths of all lines that we assist in measuring, to the best of our skill and ability, and in accordance with instructions given us, in the survey of  
Boundaries of Tps. 7, 8 & 9 N., Rs. 13, 14 & 15 E.

James M. Barney, Chainman.  
Edgar M. Darnall, Chainman.

Subscribed and sworn to before me this 31<sup>st</sup>  
day of May, 1900  
My com. exp. 1/25/13



J. L. Evans  
Notary Public  
Roosevelt - Ariz.

WE, Chas. E. Bean and  
do solemnly swear that we will well and truly perform the duties of moundmen in the establishment of corners, according to the instructions given us, to the best of our skill and ability, in the survey of  
Boundaries of Tps. 7, 8 & 9 N., Rs. 13, 14 & 15 E.

Chas. E. Bean, Moundman.  
Moundman.

Subscribed and sworn to before me this 31<sup>st</sup>  
day of May, 1900  
My com. exp. 1/25/13



J. L. Evans  
Notary Public  
Roosevelt - Ariz.

WE, Jose N. Lopez and Ben. J. Kinsey,  
do solemnly swear that we will well and truly perform the duties of axmen in the establishment of corners and other duties, according to instructions given us, to the best of our skill and ability, in the survey of  
Boundaries of Tps. 7, 8 & 9 N., Rs. 13, 14 & 15 E.

Jose N. Lopez, Axman.  
Ben. J. Kinsey, Axman.

Subscribed and sworn to before me this 31<sup>st</sup>  
day of May, 1900  
My com. exp. Jan 25<sup>th</sup> 1913.



J. L. Evans  
Notary Public  
Roosevelt - Ariz.

I, Francisco Gutierrez, do solemnly swear that I will well and truly perform the duties of flagman according to instructions given me, to the best of my skill and ability, in the survey of  
Boundaries of Tps. 7, 8 & 9 N., Rs. 13, & 14 & 15 E.

Flagman.

Subscribed and sworn to before me this 31<sup>st</sup>  
day of May, 1900  
My com. exp. 1/25/13



Francisco Gutierrez  
J. L. Evans  
Notary Public  
Roosevelt - Ariz.

## Chains.

Survey commenced June 2, 1910, and executed with a W. & L. E. Gurley light mountain transit, special make, unnumbered, with Burts patent solar attachment. The horizontal limb of the instrument is provided with two double verniers placed opposite to each other and each reading to 1' of arc, which is also the least reading of the latitude and declination arcs of the solar. I begin as per instructions at the Cor.pt. of Tps. 6 & 7 N., Rs. 12 & 13 E., W.C. recently established by me and heretofore described.

At this cor. at 4h p.m., l.m.t., I examine and test carefully the adjustments of the transit and solar attachment, and find same correct; then in order to test the solar apparatus, by comparing the results of observations on the sun, made during a.m. & p.m. hours, with a true meridian determined by observations on Polaris, I proceed as follows:

At 5h p.m., l.m.t., I set off 33° 54' N. on the latitude arc and 22° 12' N. on the declination arc, and determine a meridian with the solar, and mark the meridian thus determined by a nail in a tree 5 chs. N. of my station.

June 2, 1910.

June 3, 1910.

At 2h 47m a.m., l.m.t., I observe Polaris at Eastern Elongation, in accordance with instructions in the Manual, and mark the line thus determined by a cross on a ledge of rock 5 chs. N. of my station.

At 6h a.m., l.m.t., I lay off the azimuth of Polaris, 1° 25' to the W. of this line, and mark the true meridian thus determined by a tack in the tree 5 chs. N. of my station, which point falls .30 ins. W. of the meridian point given by the solar on preceding evening.

At 7h a.m., l.m.t., I set off 33° 54' N. on the lat. arc, and 22° 16' N. on the decl. arc, and determine a meridian with the solar, and mark the meridian thus determined by a tack in a tree 5 chs. N. of my station, which point falls .30 ins. W. of the true meridian point established by Polaris Observation.

The solar apparatus, by p.m. & a.m. observations, defines positions for meridians, about 16" E. & W. respectively of the true meridian determined by the Polaris observation; therefore, I conclude that the adjustments of the instrument are satisfactory.

The magnetic bearing of the true meridian, at 7h a.m., is N. 14° 25' W.; the angle thus determined gives the magnetic declination as 14° 25' E.

From the Tp. cor. above described, I run,  
as per instructions,

East, on S. Bdy., bet. secs. 6 & 31.

From cor. pt. in wash.

Over mts. land, asc. through jungle of scrub oak,  
with great difficulty.

8.00 Top of spur, brs. SSW. & NNE., thence, desc. broken S. slope of mtn.

39.02 Allowing 98 lks. for convergency, as per instructions, I Set a syenite stone 18x8x6 ins. 12 ins. in ground for  $\frac{1}{4}$  sec. cor. marked  $\frac{1}{4}$  on N. face, and raise a mound of stone 2 ft. base  $1\frac{1}{2}$  ft. high N. of cor., from which, A juniper tree 7 ins. diam. brs. S. 65 $\frac{1}{2}$ ° E. 57 lks. dist., marked  $\frac{1}{4}$  S. 6 B.T.

No other bearings available.

46.00 Gulch 20 lks. wide, course SE., asc. steep SW. slope.

56.00 Top of rise, desc. steep, stony, broken SE. slope.

65.00 Foot main slope, brs. NE. & SW., desc. grad.

## Chains.

- 79.02 Set a juniper post, 4 ins. sq., 3 ft. long 2 ft. in ground for cor. of secs. 5, 6, 31 & 32, marked, T. 7 N., S. 32 on NE., R. 13 E., S. 5 on SE., S. 6 on SW., and S. 31 on NW., faces, with 5 notches on E. & 1 notch on W. edges, from which,  
 An oak tree 8 ins. diam. brs. N. 1° E., 49 lks. dist., marked T. 7 N., R. 13 E., S. 32 B.T.  
 An oak tree 10 ins. diam. brs. S. 39½° E. 29 lks. dist., marked T. 7 N., R. 13 E. S. 5 B.T.  
 An oak tree 8 ins. diam. brs. S. 91° W. 84 lks. dist., marked T. 7 N., R. 13 E. S. 6 B.T.  
 An oak tree 6 ins. diam. brs. N. 80° W. 26 lks. dist., marked T. 7 N., R. 13 E. S. 31 B.T.
- Land, mts., broken.  
 Soil, 2nd & 3rd rate, gravelly, stony.  
 Timber, scattering juniper and oak.  
 Undergrowth, dense manzanita, scrub oak, thorn.  
 Mts. land, covered with dense undergrowth, and exceptionally difficult to survey, 79.02 chs.
- 
- East, on S. bdy., bet. secs. 5 & 32  
 Over mts. land, desc. grad. through jungle of thorn, manzanita, and scrub oak, with great difficulty.
- 26.00 Dry wash 15 lks. wide, course SE., asc. grad. SE. slope.
- 32.00 Top of rise, desc.
- 40.00 Set a syenite stone 20x12x4 ins. 15 ins. in ground for ¼ sec. cor. marked ¼ on W. face, and raise a mound of stone 2 ft. base 1½ ft. high N. of cor., from which,  
 An oak tree 6 ins. diam. brs. S. 30° W. 44 lks. dist., marked ¼ S. 5 B.T.  
 An oak tree 8 ins. diam. brs. N. 45° W. 30 lks. dist., marked ¼ S. 32 B.T. Elev. of cor. 4500 ft.
- 40.50 Canyon 80 lks. wide, course SE. & NW. small stream of running water., asc. SW. slope.
- 43.00 Top, desc.
- 46.80 West rim of Salome Creek canyon, desc. prec.
- 50.00 Salome Creek, 150 lks. wide, course SW., running stream of water 12 lks. wide, 3 ins. deep. Elev. 4000 ft. asc. prec.
- 54.00 East edge of canyon, hence asc. very rough along S. side of a canyon from East.  
 From this point the "J.R." ranch, brs. North, 1 mile.
- 73.56 Asc. steep, through heavy oak and juniper.
- 80.00 Set a syenite stone 20x10x6 ins. on bed-rock in mound of stone for cor. of secs. 4, 5, 32 & 33, marked with 2 notches on W. and 4 notches on E. edges, and raise a mound of stone 3 ft. base 2 ft. high W. of cor. from which,  
 A juniper tree 24 ins. diam. brs. N. 9° E. 35 lks. dist., marked T. 7 N., R. 13 E. S. 33 B.T.  
 An oak tree 20 ins. diam. brs. S. 48½° E. 54 lks. dist., marked T. 6 N. R. 13 E. S. 4 B.T.  
 An oak tree 24 ins. diam. brs. S. 76½° W. 26 lks. dist., marked T. 6 N., R. 13 E., S. 5 B.T.  
 A juniper tree 24 ins. diam. brs. N. 12° W. 97 lks. dist., marked T. 7 N., R. 13 E. S. 32 B.T.
- Land, mts., broken.  
 Soil, 3rd rate, stony.  
 Timber, oak, juniper,  
 Undergrowth, scrub oak, thorn, manzanita.  
 Mts. land covered with dense undergrowth, and exceptionally difficult to survey, 80.00 chs.  
 At this cor. at 11h 58m a.m., l.m.t., I set off 22° 17' N. on the decl. arc, and observe the sun on the meridian, The resulting lat. is 33° 54' N.

Chains.

East, on S. bdy., bet. secs. 4 & 33.  
 Over mts. land, asc. steep W. slope, through dense oak and juniper, with great difficulty.

16.00 Top of Spur, brs. SSW. & NNE., desc.  
 28.00 Asc. grad. along SW. slope.  
 33.00 Asc. steep.  
 40.00 on Steep S. slope near foot of bluff, I  
 Set a syenite stone 18x8x6 ins. 12 ins. in ground for  $\frac{1}{4}$  sec. cor. marked  $\frac{1}{4}$  on N. face, and raise a mound of stone 2 ft. base  $1\frac{1}{2}$  ft. high W. of cor. from which,  
 An oak tree 6 ins. diam. brs. N.  $34^\circ$  W. 9 lks. dist., marked  $\frac{1}{4}$  S. 33 B.T.  
 An oak tree 12 ins. diam. brs. S.  $2^\circ$  E. 30 lks. dist., marked  $\frac{1}{4}$  S. 4 B.T.

42.80 West rim of canyon, brs. S. & N., down which I cannot chain, so I send a man across, and line a flag on East rim of canyon, which flows S.  
 It being impracticable to measure a base line on W. side of canyon, I leave a large flag at this point and proceed across to the flag on line on East rim, and measure therefrom a base line to the south.  
 At 15.23 chs. on this base, the West flag, brs. N.  $66^\circ 8'$  W. which is the angle subtended by the base.  
 Dist. across canyon is  $15.23 \text{ chs.} \times \text{tang. } 66^\circ 8' = 34.42 \text{ chs.}$  which added to 42.80 chs., gives

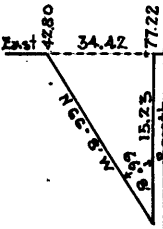
77.22 To flag on East rim of canyon. Continue measurement.  
 80.00 Set a sandstone 20x10x8 ins. on bed-rock, in mound of stone for cor. of secs. 4, 5, 33 & 34, marked with 3 notches on E. & W. edges, and from which,  
 An oak tree 14 ins. diam. brs. N.  $56^\circ$  E. 54 lks. dist., marked T. 7 N., R. 13 E., S. 34 B.T.  
 An oak tree 24 ins. diam. brs. S.  $53^\circ$  E. 51 lks. dist., marked T. 6 N., R. 13 E., S. 3 B.T.  
 An oak tree 12 ins. diam. brs. S.  $3^\circ$  W. 23 lks. dist., marked T. 6 N., R. 13 E. S. 4 B.T.  
 A juniper tree 12 ins. diam. brs. N.  $64\frac{1}{2}^\circ$  W. 34 lks. dist., marked T. 7 N., R. 13 E. S. 35 B.T.

Land, mts. broken.  
 Soil, 3rd rate, very stony.  
 Timber, oak, juniper.  
 Undergrowth, scrub oak, manzanita buckbrush, thorn.  
 Mts. land, heavily timbered or covered with dense undergrowth and exceptionally difficult to survey, 80.00 chs.  
 June 3, 1910.

June 4, 1910.  
 At 7h a.m., l.m.t., at the cor. above described,  
 I set off  $33^\circ 54'$  N. on the lat. arc, and  $22^\circ 24'$  N. on the decl. arc, and determine a true meridian with the solar, thence I run,  
 East, on S. Bdy., bet. secs. 3 & 34.  
 Over mts. land, asc. steep, stony W. slope, through dense oak, juniper, and scattering pine, with great difficulty

22.00 Top of high dividing ridge, brs. SSW. & NNE., Elev. 6800 ft.  
 25.30 Desc. steep, E. slope.  
 40.00 Set a red sandstone 20x6x6 ins. 15 ins. in ground for  $\frac{1}{4}$  sec. cor. marked  $\frac{1}{4}$  on N. face, from which,  
 An oak tree 24 ins. diam. brs. N.  $30^\circ$  E. 9 lks. dist., marked  $\frac{1}{4}$  S. 34 B.T.  
 An oak tree 12 ins. diam. brs. S.  $54^\circ$  E. 59 lks. dist., marked  $\frac{1}{4}$  S. 3 B.T.

59.00 Foot of steep slope, brs. N. & S., enter flat and heavy pine and oak. Elev. 6200  
 63.50 Wash 50 lks. wide, course NW., asc. grad.  
 80.00 Set a red sandstone 24x10x10 ins. 18 ins. in ground for cor. of secs. 2, 3, 34 & 35, marked with 4 notches on W. & 2 notches on E. edges, from which,





Chains.

A pine tree 30 ins.diam. brs. N.23°E 47 lks. dist.,  
 marked T. 6 N.,R. 13 E., S. 35 B.T.  
 A juniper tree 24 ins. diam. brs.S44½° E.112 lks.dist.,  
 marked T. 6 N.,R. 13 E., S. 2 B.T.  
 An oak tree 12 ins.diam. brs.S. 68½°W. 67 lks.dist.,  
 marked T. 6 N.,R. 13 E., S. 3 B.T.  
 An oak tree 24 ins.diam. brs. N.68½°W. 37 lks.dist.,  
 marked T. 7 N., R. 13 E. S. 34 B.T.

Land, mts..  
 Soil, stony, 3rd, rate.  
 Timber, oak, pine, juniper.  
 Undergrowth, scrub oak, pine.  
 Mts. lan,heavily timbered or covered with dense undergrowth  
 and exceptionally difficult to survey, 80.00 chs.

East, on S. Bdy., bet. secs. 27 & 35.  
 Over mts. land, asc. grad., through pine juniper, and  
 oak timber, with great difficulty.

26.30 Wagon trail, brs. NW. & SE., from McFaddens ranch,SE.  
 27.15 Wire fence, brs. NE. & SW., enter McFaddens pasture.  
 40.00 Set a sandstone 30x8x8 ins. 10 ins. in ground to bed-rock,  
 in mound of stone for ¼ sec. cor. marked ¼ on N. face,  
 from which,  
 A juniper tree 30 ins.diam. brs.N.35°E. 236 lks.dist.,  
 marked ¼ S. 35 B.T.  
 A juniper 48 ins.diam. brs. S. 4½°E. 137 lks. dist.,  
 marked ¼ S. 2 B.T.  
 Asc. steep, stony, S.W. slope.

61.00 Ridge, brs. SE. & NW.  
 64.00 Desc. broken NE. slope.  
 73.10 Wire fence, brs. NW. & SE., Leave pasture.  
 75.10 Stony gulch, 20 lks. wide, course South, ascend.  
 80.00 Set a quartzite stone 30x10x10 ins. on bed-rock in mound  
 of stone for cor. of secs. 1,2,35 & 36, marked with 5  
 notches on W. & 1 notch on E. edges, from which,  
 An oak tree 14 ins.diam. brs. N.55½°E. 7 lks. dist.,  
 marked T. 7 N.,R. 13 E. S. 36 B.T.  
 An oak tree 6 ins.diam. brs.S.12½°E. 38 lks. dist.,  
 marked T. 6 N.,R. 13 E. S. 1 B.T.  
 An oak tree 18 ins.diam. brs.S.57½°W. 19 lks. dist.,  
 marked T. 6 N.,R. 13 E. S. 2 B.T.  
 An oak tree 18 ins. diam. brs. N. 44½°W. 52 lks.dist.,  
 marked T. 7 N., R. 13 E. S. 35 B.T.

Land, mts..  
 Soil, 2nd & 3rd rate, gravelly, stony.  
 Timber, pine, oak, juniper.  
 Undergrowth, scrub oak, pine.  
 Mts. land heavily timbered or covered with dense under-  
 growth, and exceptionally difficult to survey, 80.00 chs.  
 At this cor. at 11h 58m a.m., l.m.±., I set off 22°24½' N.  
 on the decl. arc, and observe the sun on the meridian.  
 The resulting lat. is 33°54' N.

East, on S. Bdy., bet. secs. 1 & 36.  
 Over mts. land, asc. through thick pine oak, juniper,  
 with great difficulty.

17.00 Top of rise, brs. NW. & SE.  
 19.00 Desc. E. slope.  
 40.00 Set a quartzite stone 24x15x15 ins. 13 ins. in ground for  
 ¼ sec. cor. marked ¼ on N. face, and raise a mound of  
 stone 2 ft. base 1½ ft. high N. of cor.,from which,  
 A Pine tree 12 ins.diam. brs. N.82°E. 100 lks. dist.,  
 marked ¼ S. 36 B.T.  
 A juniper tree 48 ins. diam. brs. S.47°E. 78 lks.dist.,  
 marked ¼ S. 1 B.T.

## Chains.

58.50 Desc. steep SE slope.  
 70.00 Canyon 2 chs. wide, 100 ft. deep, course S., asc.  
 75.00 East rim of canyon, asc. grad. along S. slope.  
 80.00 Set a red sandstone 20x10x10 ins. 15 ins. in ground for cor. of Tps. 6 & 7 N., Rs. 13 & 14 E., marked with 6 notches on N., S., E. & W., edges, and raise a mound of stone 5 ft. base 4 ft. high S. of cor. from which,  
 An oak 12 ins. diam. brs. N. 43° E. 41 lks. dist., marked T. 7 N., R. 14 E., S. 31 B.T.  
 An oak tree 14 ins. diam. brs. S. 24½° E. 46 lks. dist., marked T. 6 N., R. 14 E., S. 6 B.T.  
 An oak tree 12 ins. diam. brs. S. 73¼° W. 18 lks. dist., marked T. 6 N., R. 13 E., S. 1 B.T.  
 An oak tree 13 ins. diam. brs. N. 71½° W. 24½ lks. dist., marked T. 7 N., R. 13 E., S. 36 B.T.  
 Wm. McFaddens ranch house on E. side of canyon, brs. South, about 1 mile.  
 Land, mts. broken.  
 Soil, stony, 3rd, rate. Good grazing.  
 Timber, pine, oak, juniper.  
 Undergrowth, manzanita, scrub oak, buck brush.  
 Mts. land, heavily timbered or covered with dense undergrowth, and exceptionally difficult to survey, 80.00 chs.  
 June 4, 1910.

## General Description,

The S. Bdy. of T. 7 N., R. 13 E., passes over a broken succession of mountains ridges, and canyons, having a trend to the South. There is good grazing land to the North of the line about the "J.R." ranch, and water can be found in several of the deeper canyons. The country is in general covered with a medium growth of dense oak and juniper.

*Jesse B. Wright*  
 U.S. Deputy Surveyor.

- Chains. June 5, 1910.  
 At 7h a.m., l.m.t., at the cor. of Tps. 6 & 7 N., Rs. 13 & 14 East, recently established by me,  
 I set off  $33^{\circ}54'$  N. on the lat. arc, and  $22^{\circ}31'$  N. on the decl. arc, and determine a true meridian with the solar, thence I run,  
 North, on Range line, bet. secs. 31 & 36,  
 Var.  $14^{\circ}20'$  E.  
 Over mts. land, asc. through dense scrub oak and oak and juniper timber, with great difficulty.
- 40.00 I mark an oak tree 14 ins. diam. for  $\frac{1}{4}$  sec. cor.,  
 $\frac{1}{4}$  S. 36 on W., and S. 31 on E. faces, from which,  
 An oak tree 14 ins. diam. brs. S.  $87^{\circ}$  E. 53 lks. dist.,  
 marked  $\frac{1}{4}$  S. 31 B.T.  
 An oak tree 14 ins. diam. brs. N.  $46^{\circ}$  W. 13 lks. dsit.,  
 marked  $\frac{1}{4}$  S. 36 B.T.
- Ascend steep through jungle of scrub oak and thorn.
- 44.50 Gulch 20 lks. wide, course SW.
- 63.50 Top of McFadden Peak, brs. E. & W., Elev. 6500 ft.,  
 Desc. steep NE. slope through pine and juniper timber.
- 80.00 Set a red sandstone  $20\frac{1}{2} \times 3 \times 3$  ins. 15 ins. in ground for  
 cor. of secs. 25, 30, 31 & 36, marked with 1 notch on S. &  
 5 notches on N. edges, and from which,  
 A juniper tree 15 ins. diam. brs. N.  $60^{\circ}$  E. 61 lks. dist.,  
 marked T. 7 N., R. 14 E. S. 30 B.T.
- A pine tree 24 ins. diam. brs. S.  $74^{\circ}$  E. 22 lks. dist.,  
 marked T. 7 N., R. 14 E. S. 31 B.T.  
 An oak tree 24 ins. diam. brs. S.  $65^{\circ}$  W. 61 lks. dist.,  
 marked T. 7 N., R. 13 E. S. 36 B.T.  
 A juniper tree 30 ins. diam. brs. N.  $38^{\circ}$  W. 25 lks. dist.,  
 marked T. 7 N., R. 13 E. S. 25 B.T.
- Land, mts.  
 Soil, 3rd rate, stony.  
 Timber, oak, juniper, pine.  
 Undergrowth, scrub oak, pine, thorn.  
 Mts. land heavily timbered or covered with dense under-  
 growth, exceptionally difficult to survey, 80.00 chs.
- 
- North, bet. secs. 25 & 30.  
 Over mts. land, desc. steep N. slope, through dense  
 pine, oak, and juniper, with great difficulty.
- 19.00 Desc. prec. NE. slope.
- 40.00 Set a sandstone  $18 \times 8 \times 8$  ins. on bed-rock, in mound of  
 stone for  $\frac{1}{4}$  sec. cor. marked  $\frac{1}{4}$  on W. face, from which,  
 A pine tree 30 ins. diam. brs. S.  $16\frac{1}{2}^{\circ}$  E. 30 lks. dist.,  
 marked  $\frac{1}{4}$  S. 30 B.T.  
 A pine tree 36 ins. diam. brs. S.  $87\frac{1}{2}^{\circ}$  W. 50 lks. dist.,  
 marked  $\frac{1}{4}$  S. 25 B.T.
- 48.20 Gulch 150 lks. wide, course E., asc.
- 58.00 Ridge, brs. E. & W., desc.
- 71.10 Gulch 50 lks. wide, course SSE. asc. on E. of same.
- 74.35 Same gulch, course SSW., asc. along W. side of same.
- 80.00 Set a quartzite stone  $18 \times 10 \times 8$  ins. in mound of stone on  
 bed-rock, for cor. of secs. 19, 24, 25 & 30, marked with  
 2 notches on S. & 4 notches on N. edges, from which,  
 An oak tree 12 ins. diam. brs. N.  $46\frac{1}{2}^{\circ}$  E. 41 lks. dist.,  
 marked T. 7 N., R. 14 E. S. 19 B.T.  
 An oak tree 10 ins. diam. brs. S.  $26^{\circ}$  E. 34 lks. dist.,  
 marked T. 7 N., R. 14 E. S. 30 B.T.  
 An oak tree 10 ins. diam. brs. S.  $1^{\circ}$  W. 16 lks. dist.,  
 marked T. 7 N., R. 13 E. S. 25 B.T.  
 An oak tree 12 ins. diam. brs. N.  $87^{\circ}$  W. 12 lks. dist.,  
 marked T. 7 N., R. 13 E. S. 24 B.T.
- Land, mts. Soil, stony, 3rd rate.  
 Timber, pine, oak, juniper.  
 Undergrowth, scrub oak, pine.  
 Mts. land, heavily timbered, and exceptionally difficult  
 to survey, 80.00 chs.  
 At this cor. at 11h 58m a.m., l.m.t., I set off  $22^{\circ}31\frac{1}{2}'$  N.  
 on the decl. arc, and observe the sun on the meridian.  
 The resulting lat. is  $33^{\circ}56'$  N.

161

## Chains.

- North bet. secs. 19 & 24.  
Over mts. land, asc. stony SE. slope, through pine and oak timber, with great difficulty.
- 10.00 Top of Spur, brs. E. & W., desc. grad.  
28.50 Road, McFaddens ranch to Young, brs. NW. & SE.  
28.75 On N. side of road, set an oak post 6 ins. sq. 4 ft. long in mound of stone, marked R. 13 E. on W. and R. 14 E. on E. faces.  
31.00 Ascend, SE. slope.  
40.00 Set a quartzite stone 18x6x6 ins. 12 ins. in ground for  $\frac{1}{4}$  sec. cor. marked  $\frac{1}{4}$  on W. face, from which,  
A juniper tree 24 ins. diam. brs. S. 54° E. 33 lks. dist., marked  $\frac{1}{4}$  S. 19 B.T.  
A juniper tree 10 ins. diam. brs. S. 81° W. 17 lks. dist., marked  $\frac{1}{4}$  S. 24 B.T.  
Top of E. slope, desc.  
46.00 Asc. SE. slope.  
51.00 Top of divide, N. & S., thence along E. edge of same.  
69.00 Cross divide, brs. NNE. & SSW., desc. grad. along west slope of same. Butte on same NE. 20 chs.  
80.00 Set a quartzite stone 24x12x6 ins. 18 ins. in ground for cor. of secs. 13, 18, 19 & 24, marked with 3 notches on N. & S. edges, from which,  
A pine tree 30 ins. diam. brs. N. 45° E. 131 lks. dist., marked T. 7 N., R. 14 E. S. 13 B.T.  
A pine tree 24 ins. diam. brs. S. 30 $\frac{1}{2}$ ° E. 51 lks. dist., marked T. 7 N., R. 14 E. S. 19 B.T.  
An oak tree 24 ins. diam. brs. S. 15° W. 11 lks. dist., marked T. 7 N., R. 13 E. S. 24 B.T.  
An oak tree 8 ins. diam. brs. N. 61 $\frac{1}{2}$ ° W. 17 lks. dist., marked T. 7 N., R. 13 E. S. 13 B.T.
- Land, mts.  
Soil, 3rd rate, stony.  
Timber, pine, juniper, oak.  
Undergrowth, scrub oak, pine, manzanita, buck brush.  
Mts. land, heavily timbered or covered with dense undergrowth, exceptionally difficult to survey 80.00 chs.

- North, bet. secs. 13 & 18.  
Over mts. land, desc. through heavy pine & oak, with great difficulty.
- 5.00 In turn of road, from SW. to NW., McFaddens to Young.  
6.50 Gulch 20 lks. wide, course SW., turns NW. ascend.  
17.00 Top of SW. slope, thence along W. slope.  
32.00 Desc. grad. along NW. slope.  
40.00 Set a sandstone 20x8x8 ins. 15 ins. in ground for  $\frac{1}{4}$  sec. cor. marked  $\frac{1}{4}$  on W. face, from which,  
A pine tree 28 ins. diam. brs. S. 22° E. 29 lks. dist., marked  $\frac{1}{4}$  S. 13 B.T.  
An oak tree 24 ins. diam. brs. S. 75° W. 76 lks. dist., marked  $\frac{1}{4}$  S. 13 B.T.  
55.00 Enter dense thicket of young pine.  
61.00 Leave pine, enter dense scrub oak.  
67.32 Pine tree 30 ins. diam. on line.  
80.00 Set a quartzite stone 24x8x8 ins. 18 ins. in ground for cor. of secs. 7, 12, 13 & 18, marked with 4 notches on S. & 2 notches on N. edges, from which,  
An oak tree 5 ins. diam. brs. N. 35° E. 6 lks. dist., marked T. 7 N., R. 14 E. S. 7 B.T.  
An oak tree 15 ins. diam. brs. S. 17° E. 18 lks. dist., marked T. 7 N. R. 14 E. S. 13 B.T.  
An oak tree 18 ins. diam. brs. S. 36 $\frac{1}{2}$ ° W. 97 lks. dist., marked T. 7 N., R. 13 E. S. 13 B.T.  
An oak tree 15 ins. diam. brs. N. 30° W. 15 lks. dist., marked T. 7 N., R. 13 E. S. 12 B.T.
- Land, Mts., Soil, 3rd rate, stony.  
Timber, pine, oak, juniper. Undergrowth, scrub oak & pine.  
Mts. land, heavily timbered or covered with dense undergrowth, exceptionally difficult to survey, 80.00 chs:

Chains.

North, bet. secs. 7 & 12.

Over mts. land, along W. slope, through dense scrub oak, very stony ground, with great difficulty.

40.00 Set a red sandstone 18x6x4 ins. on bed-rock, in mound of stone for 1/4 sec. cor., marked 1/4 on W. face, from which,

An oak tree 8 ins. diam. brs. S. 78 3/4° E. 23 lks. dist., marked 1/4 S. 7 B.T.

A juniper 15 ins. diam. brs. S. 6 1/4° W. 61 lks. dist., marked 1/4 S. 12 B.T.

Magnetic var. at this cor. 14° 45' E.

Continue along W. slope.

80.00 Set a quartzite stone 24x10x6 ins., on bed-rock, in mound of stone, for cor. of secs. 1, 6, 7 & 12, marked with 5 notches on S. & 1 notch on N. edges, from which.

An oak tree 8 ins. diam. brs. N. 30° E. 4 lks. dist., marked T. 7 N., R. 14 E. S. 6 B.T.

An oak tree 10 ins. diam. brs. S. 63° E. 39 lks. dist., marked T. 7 N., R. 14 E. S. 7 B.T.

An oak tree 8 ins. diam. brs. S. 38° W. 44 lks. dist., marked T. 7 N., R. 13 E. S. 12 B.T.

An oak tree 15 ins. diam. brs. N. 23 1/2° W. 47 lks. dist., marked T. 7 N., R. 13 E. S. 1 B.T.

Land, mts., Soil, 3rd rate, stony.

Timber, pine, oak, juniper.

Undergrowth, scrub oak, pine,

Mts. land heavily timbered, exceptionally difficult to survey, 80.00 chs.

At this cor., at 11h 58m a.m., 1.m.t., I set off 22° 31 1/2' N. on the decl. arc, and observe the sun on the meridian. The resulting lat. is 33° 58' N.

North, bet. secs. 1 & 6,

Over mts. land, along W. slope, through heavy pine, juniper, and oak, with great difficulty.

2.00 Desc. steep NW. slope.

5.00 Gulch 20 lks. wide, course NNW., asc. broken W. slope.

14.85 On S. side of road, set an oak post 4 ins. sq. 4 ft. long, in mound of stone, marked R. 13 E. on W., and R. 14 E. on E. faces.

15.00 Road, from Roosevelt and McFaddens, to Young, brs. NE. & SW.

20.00 Desc. grad. NW. slope.

40.00 Set a quartzite stone 14x10x6 ins. 10 ins. in ground for 1/4 sec. cor. marked 1/4 on W. face, from which,

A juniper tree 24 ins. diam. brs. S. 74° E. 39 lks. dist., marked 1/4 S. 6 B.T.

A juniper tree 28 ins. diam. brs. N. 40° W. 63 lks. dist., marked 1/4 S. 1 B.T.

52.00 Road is 50 lks. to right, and turns East.

53.10 Desc. steep.

63.50 Middle of stony wash, (dry), 1 ch. wide, course WNW.

63.80 Pine 36 ins. diam. on line N. side of Creek, asc.

64.46 On S. side of road, build mound of stone on line.

64.66 Centre of road, McFaddens to Young, NW. & SE.

67.00 Dinner Creek, (dry) 80 lks. wide, course W. asc.

80.00 Set a red sandstone 30x12x4 ins. 24 ins. in ground for cor. of Tps. 7 & 8 N., Rs. 13 & 14 E., marked 8 N on NE. and 14 E. on SE. faces, and raise a mound of stone 4 ft. base 4 ft. high S. of cor., from which,

Chains.

- An oak tree 6 ins.diam.brs. N.79°E. 20 lks.dist.,  
marked T. 8 N.,R. 14 E. S. 31 B.T.
- A juniper tree 18 ins.diam.brs.S.76½°E. 22 lks.dist.,  
marked T. 7 N.,R. 14 E. S. 6 B.T.
- A juniper tree 24 ins.diam.brs. S.35°W. 73 lks.dist.,  
marked T. 7 N.,R. 13 E. S. 1 B.T.
- An oak tree 12 ins.diam.brs. N.34½°W. 27 lks. dist.,  
marked T. 8 N.,R. 13 E. S. 36 B.T.

Land, mts.  
 Soil, 3rd rate, stony.  
 Timber, pine, oak, juniper.  
 Undergrowth, scrub oak, pine.  
 Mts. land, heavily timbered, and exceptionally difficult  
 to survey, 80.00 chs.

June 5, 1910.

Chains.

June 6, 1910.  
 At 7h a.m. l.m.t., I set off 33°59'N. on the lat. arc, and 22°37½'N. on the decl. arc, and determine a true meridian with the solar at the cor. of Tps. 7 & 8 N., Rs. 13 & 14 E., recently established by me.  
 Thence I run,  
 North, on range line, bet. secs. 31 & 36,  
 Var. 14°25'E.  
 Over mts. land, asc. SW. slope, through jungle of manzanita and scrub oak, with great difficulty.  
 8.00 Top ridge, brs. SE. & NW., desc.  
 14.50 Gulch 20 lks. wide, course SE., asc.  
 17.50 Enter open grassy knoll, brs. E. & W. stony ground.  
 38.50 Enter heavy oak and juniper, brs. NW. & SE.  
 40.00 Set a quartzite stone 30x12x6 ins. 10 ins. in ground to bed-rock in mound of stone for ¼ sec. cor., marked ¼ on W. face, from which,  
 A juniper tree 48 ins. diam. brs. S. 71½° W. 39 lks. dist., marked ¼ S. 36 B.T.  
 An oak tree 28 ins. diam. brs. S. 77° E. 57 lks. dist., marked ¼ S. 31 B.T.  
 Ascend W. slope, through heavy oak & juniper.  
 63.00 Top of rise, desc. WNW. slope.  
 73.75 Trail, brs. NE. & SW.  
 77.15 Foot of slope, asc. over pt., sloping W.  
 80.00 Set a sandstone 30x15x10 ins. 10 ins. in ground to bed-rock, in mound of stone for cor. of secs. 25, 30, 31 & 36, marked with 1 notch on S. & 5 notches on N. edges, from which,  
 An oak tree 6 ins. diam. brs. N. 47° E. 17 lks. dist., marked T. 8 N., R. 14 E. S. 30 B.T.  
 An oak tree 24 ins. diam. brs. S. 78° E. 37 lks. dist., marked T. 8 N., R. 14 E. S. 31 B.T.  
 A juniper tree 30 ins. diam. brs. S. 8° W. 74 lks. dist., marked T. 8 N., R. 13 E. S. 36 B.T.  
 A pine tree 36 ins. diam. brs. N. 84° W. 92 lks. dist., marked T. 8 N., R. 13 E. S. 25 B.T.  
 Land, mts., soil, 3rd rate, stony.  
 Timber, pine, oak, juniper.  
 Undergrowth, scrub oak, manzanita, pine.  
 Mts. land, heavily timbered, exceptionally difficult to survey, 80.00 chs.

North, bet. secs. 25 & 30  
 Over mts. land, desc. through dense pine & oak. with great difficulty.  
 4.00 Stony gulch, 1 ch. wide, course NW., asc. grad. along SW. slope. loose stony ground.  
 38.00 Top of rise, desc. steep.  
 40.00 Set a sandstone 30x10x6 ins. 20 ins. in ground, on bed-rock, in mound of stone for ¼ sec. cor. marked ¼ on W. face, from which,  
 An oak tree 10 ins. diam. brs. S. 89° W. 35 lks. dist., marked ¼ S. 25 B.T.  
 A juniper tree 12 ins. diam. brs. N. 50° E. 61 lks. dist., marked ¼ S. 30 B.T.  
 41.93 Gulch 20 lks. wide, course NW., asc. steep, S. slope.  
 56.00 Top of bluff, brs. E. & W., asc. grad.  
 68.00 Top of mountain, brs. E. & W.,  
 74.00 Desc. grad. through dense scrub oak, and manzanita.  
 80.00 Set a sandstone 18x10x6 ins. 12 ins. in ground for cor. of secs. 19, 24, 25 & 30, marked with 2 notches on S. & 4 notches on N. edges, from which,  
 An oak tree 24 ins. diam. brs. N. 24° E. 67 lks. dist., marked T. 8 N., R. 14 E. S. 19 B.T.

## West Boundary of T. 8 N., R. 14 E.

11

## Chains.

A juniper tree 30 ins. diam. brs. S. 75° W. 42 lks. dist.,  
marked T. 8 N., R. 14 E. S. 30 B.T.  
An oak tree 12 ins. diam. brs. S. 23° W. 38 lks. dist.,  
marked T. 8 N., R. 13 E. S. 25 B.T.  
An oak tree 12 ins. diam. brs. N. 89½° W. 42 lks. dist.,  
marked T. 8 N., R. 13 E. S. 24 B.T.  
Land, mts.  
Soil, 3rd rate, stony.  
Timber, pine, oak, juniper.  
Undergrowth, scrub oak, buck brush.  
Mts. land heavily timbered, exceptionally difficult to  
survey, 80.00 chs.  
At this cor. at 11h 58m a.m., l.m.t., I set off 22° 38' N.  
on the decl. arc and observe the sun on the meridian.  
The resulting lat. is 34° 1' N. ✓

## North, bet. secs. 19 &amp; 24.

Over mts. land, desc. grad. over very stony ground,  
through dense scrub oak, and juniper and pine timber,  
with great difficulty.  
16.00 Low gap, asc. grad. Top of slope 1 ch. W.  
23.50 Top of slope, brs. NNE. & SSW. desc. stony W. slope.  
30.00 Ascend,  
34.10 Trail, brs. NW. & SE.  
37.00 Top of rise, desc.  
40.00 Set a quartzite stone 24x12x8 ins. 18 ins. in ground for  
¼ sec. cor. marked ¼ on W. face, from which,  
A pine tree 40 ins. diam. brs. S. 61½° E. 60 lks. dist.,  
marked ¼ S. 19 B.T.  
A juniper tree 24 ins. diam. brs. S. 6½° W. 24 lks. dist.,  
marked ¼ S. 24 B.T.  
Desc. through young pine, and scrub oak.  
44.50 Gulch 10 lks. wide, course NE., asc. SE. slope.  
49.00 Top of rise, desc.  
53.00 Head of draw, course E., asc.  
67.00 Top of Spur, brs. E. & W., desc.  
80.00 Set a sandstone 24x6x6 ins. 18 ins. in ground for cor.  
of secs. 13, 18, 19 & 24, marked with 3 notches on N. &  
S. edges, and raise a mound of stone 2 ft. base 1½ ft.  
high W. of cor.  
No bearings available. Pits impracticable.  
Land, mts.  
Soil, 3rd rate, stony.  
Timber, scattering oak, pine & juniper.  
Undergrowth, scrub oak manzanita, pine.  
Mts. land, covered with dense undergrowth, exceptionally  
difficult to survey, 80.00 chs.

## North, bet. secs. 13 &amp; 18.

Over mts. land, desc. NE. slope, through dense scrub  
oak and scattering pine and juniper timber,  
with great difficulty.  
19.30 Gulch 20 lks. wide, course E. asc.  
29.50 Top spur, brs. NE. & SW., desc.  
40.00 Set a sandstone 24x10x6 ins. 18 ins. in ground for  
¼ sec. cor. marked ¼ on W. face, and from which,  
A juniper tree 36 ins. diam. brs. S. 9° W. 53 lks. dist.,  
marked ¼ S. 13 B.T.  
An oak tree 12 ins. diam. brs. S. 45° E. 47 lks. dist.,  
marked ¼ S. 18 B.T.  
44.00 Asc. SW. slope  
45.30 Trail, brs. E. & W.  
47.00 Top, thence, along broken stony W. slope.  
58.00 Desc. NW. slope.



## Chains.

64.00 Gulch 20 lks. wide, course W. asc. steep.  
 68.50 Top, of slope, desc. WNW. slope.  
 75.00 Gulch 50 lks. wide, course West, near head. ascend.  
 80.00 Set a sandstone 24x8x6 ins. 18 ins. in ground for  
 cor. of secs. 7, 12, 13 & 18, marked with 4 notches on  
 S. & 2 notches on N. edges, and raise a mound of stone  
 2 ft. base 1½ ft. high W. of cor. from which,  
 An oak tree 12 ins. diam. brs. N. 61½° E. 50 lks. dist.,  
 marked T. 8 N., R. 14 E. S. 7 B.T.  
 A pine tree 8 ins. diam. brs. S. 19½° E. 15 lks. dist.,  
 marked T. 8 N., R. 14 E. S. 18 B.T.  
 A juniper tree 30 ins. diam. brs. S. 51½° W. 32 lks. dist.,  
 marked T. 8 N., R. 13 E. S. 18 B.T.  
 A juniper tree 30 ins. diam. brs. N. 65° W. 34 lks. dist.,  
 marked T. 8 N., R. 13 E. S. 12 B.T.  
 Land, mts., Soil, stony, 3rd rate.  
 Timber, pine, oak, juniper.  
 Undergrowth, scrub oak, pine.  
 Mts. land covered with dense undergrowth, and  
 exceptionally difficult to survey, 80.00 chs.  
 June 6, 1910.

June 7, 1910.

At 7h a.m., l.m.t., at the cor. of secs. 7, 12, 13 & 18,  
 I set off 34° 27' N. on the lat. arc, and 22° 44' N. on  
 the decl. arc, and determine a true meridian with the  
 solar, thence I run,  
 North, bet. secs. 7 & 12.  
 Over mts. land, desc. grad. along broken W. slope,  
 through dense scrub oak, over loose, stony ground.  
 6.75 Gulch 15 lks. wide, course SW., asc.  
 20.00 Top, brs. NNW. & SSE., thence along E. slope.  
 36.00 Desc.  
 40.00 Set a granite stone 30x10x6 ins. 24 ins. in ground for  
 ¼ sec. cor., marked ¼ on W. face, and from which,  
 A pine tree 10 ins. diam. brs. N. 58° E., 66 lks. dist.,  
 marked ¼ S. 7 B.T.  
 A pine tree 8 ins. diam. brs. N. 59° W. 12 lks. dist.,  
 marked ¼ S. 12 B.T.  
 Desc. through dense manzanita.  
 53.50 Gulch 20 lks. wide, course W. asc.  
 67.50 Top of rise, slopes, W., desc.  
 71.00 Saddle, on top of Ridge, brs. E. & W., asc. on spur N. & S.  
 78.00 Desc. NE. slope of spur.  
 80.00 Set a quartzite stone 18x3x4 ins. 12 ins. in ground for  
 cor. of secs. 1, 6, 7 & 12, marked with 5 notches on S. &  
 1 notch on N. edges, and from which,  
 An oak tree, 20 ins. diam. brs. N. 13° E. 41 lks. dist.,  
 marked T. 8 N., R. 14 E. S. 6 B.T.  
 An oak tree 10 ins. diam. brs. S. 252° E. 51 lks. dist.,  
 marked T. 8 N., R. 14 E. S. 7 B.T.  
 A juniper tree 30 ins. diam. brs. S. 31° W. 54 lks. dist.,  
 marked T. 8 N., R. 13 E. S. 12 B.T.  
 An oak tree 10 ins. diam. brs. N. 57° W. 29 lks. dist.,  
 marked T. 8 N., R. 13 E. S. 1 B.T.  
 Land, nts.  
 Soil, stony 3rd rate,  
 Timber, pine, juniper, oak.  
 Undergrowth, scrub oak, pine, manzanita.  
 Mts. land, heavily timbered or covered with dense under-  
 growth, exceptionally difficult to survey, 80.00 chs.  
 At this cor. at 11h 58½m a.m., l.m.t., I set off 22° 44'  
 N. on the decl. arc, and observe the sun on the meridian.  
 The resulting lat. is 34° 3' N.

## Chains.

- North, bet. secs. 1 & 6.  
Over mts. land dec. NE. slope, through dense scrub oak, scattering pine and juniper timber, with great difficulty.
- 10.50 Foot, and asc.  
14.50 Top NE. slope, desc.  
26.00 Gulch 20 lks. wide, course NE. asc.  
37.00 Top of ridge, brs. NE. & SW., desc.  
37.80 Road, McFaddens to Young, brs. SW. & NE.  
38.00 Build md. of stone on N. side of road.  
40.00 Set a quartzite stone 24x4x4 ins., 8 ins. in ground to bed-rock, in mound of stone for  $\frac{1}{4}$  sec. cor., marked  $\frac{1}{4}$  on W. face, from which,  
An oak tree 14 ins. diam. brs. East, 48 lks. dist., marked  $\frac{1}{4}$  S. 6 B.T.  
An oak tree 24 ins. diam. brs. S. 65 $\frac{1}{2}$ ° W. 49 lks. dist., marked  $\frac{1}{4}$  S. 1 B.T.
- Desc. along W. slope of spur, brs. N. & S.  
45.00 Desc. N. slope of spur.  
47.80 Road, brs. NW. & SE.  
53.00 Gulch 20 lks. wide, course E., asc.  
58.00 Top, thence along E. slope.  
62.50 Desc.  
63.10 Road, brs. SW. & NE.  
68.50 Foot, thence along E. slope,  
79.40 Intersect 2nd Standard Parallel North  
Set a granite stone 30x14x8 ins. on bed-rock in mound of stone for closing cor. of Tps. 8 N., Rs. 13 & 14 E., marked C.C. T. 8 N., on S., with 6 grooves on E. & W. faces, from which,  
A pine tree 10 ins. diam. brs. S. 21 $\frac{1}{2}$ ° E. 44 lks. dist., marked T. 8 N., R. 14 E. S. 6 C.C. B.T.  
A pine tree 8 ins. diam. brs. S. 26 $\frac{1}{2}$ ° W. 75 lks. dist., marked T. 8 N., R. 13 E. S. 1 C.C. B.T.  
Standard  $\frac{1}{4}$  sec. cor. on S. bdy. Sec. 36, T. 9 N., R. 13 E., brs. West, 15.55 chs. dist, which is a quartz stone 8x6x6 ins. above ground, marked and witnessed as described by the Surveyor General.  
Land, mts., Soil, 3rd & 4th rate, stony.  
Timber, pine, oak, juniper.  
Undergrowth, manzanita, scrub oak.  
Mts. land heavily timbered or covered with dense undergrowth, exceptionally difficult to survey, 79.40 chs.  
June 7, 1910.

## General Description.

The West Boundary of Tps. 7 & 8 N., R. 14 E., runs over a rough mountainous country, following in general the broken divide between Cherry Creek and Spring Creek. The land is covered with a good growth of pine and oak timber. The mean elevation of this divide being about 5600 ft.  
The country is very poorly watered. There is much good grazing land to the East and West of the line.  
The soil is in general stony, or gravelly, with some agricultural land in the narrow valleys.  
There is some indication of mineral along the Northern part of the line bet. T. 8 N., Rs. 13 & 14 E.

*Jose B. Strigish*  
U.S. Deputy Surveyor.

Chains.

June 8, 1910.  
 At 7h a.m., l.m.t., at the cor. of Tps. 6 & 7 N., Rs. 13 & 14 E., as recently established by me,  
 I set off 33°54' N. on the lat. arc, and 22°49½' N. on the decl. arc, and determine a true meridian with the solar. Thence I run,  
 East, on S. Bdy., bet. secs. 6 & 31.  
 Var. 14°25' E.

Over mts. land, desc. grad. along SE. slope, through dense scrub oak, with great difficulty.

13.70 Gulch 20 lks. wide, course SSW. asc.

14.35 Build mound of stone 5 ft. base 4 ft. high on line on W. side of road.

15.10 Road, McFaddens to Young, brs. NNE. & SSW.

Ascend steep W. slope of Horse Mountain.

39.02 Allowing 93 lks. for convergency as per instructions, I Set a sandstone 40x15x12 ins. on bed-rock in mound of stone for ¼ sec. cor. marked ¼ on N. face, from which,  
 An oak tree 10 ins. diam. brs. N. 19° W. 17 lks. dist., marked ¼ S. 31 B.T.  
 An oak tree 10 ins. diam. brs. S. 29° E. 39 lks. dist., marked ¼ S. 6 B.T.

70.00 Asc. prec.

79.02 Cor. point falls on prec. W. slope of bluff.

84.30 Top of bluff, brs. N. & S., Elev. 7000 ft.

Set a granite stone 24x15x12 ins. on bed-rock, in mound of stone for Witness cor. to cor. of secs. 5, 6, 31 & 32, marked W.C. on NE, with 1 notch on W. & 5 notches on E. edges, and raise a mound of stone 4 ft. base, 3 ft. high W. of cor., from which,

An oak tree 12 ins. diam. brs. N. 30° W. 17 lks. dist., marked T. 8 N., R. 14 E. S. 32 B.T.

A Juniper tree 24 ins. diam. brs. S. 64° E. 93 lks. dist., marked T. 7 N., R. 14 E. S. 5 B.T.

No other bearings available. Pits impracticable.

Land, mts., Soil, 3rd rate, stony.

Timber, pine, oak, juniper.

Undergrowth, scrub oak, manzanita, buckbrush, pine.

Mts. land, heavily timbered or covered with dense under growth, exceptionally difficult to survey, 79.02 chs.

At this cor. at noon, I set off 22°50' N. on the decl. arc, and observe the sun on the meridian.

The resulting lat. is 33°54' N.

East, bet. secs. 5 & 32. from cor. pt.

Over mts. land asc. prec.

4.30 Witness cor. as above described., asc. SW. slope.

11.50 Top of Horse Mountain, elev. 7500 ft., brs. NNW. & SSE.

Desc. E. slope. very heavy pine and oak.

22.30 Edge of bluff, brs. NNE. & SSW., down which I cannot chain. Therefore, I send a man ahead, and line a flag near foot of bluff. Then I measure a base line of 6 chs. to the North, to a point from which the flag brs. S. 67°48' E. The angle subtended by the base is therefore 67°48'. Distance to flag is 6.00 x tan. 67°48' which is 14.70 chs., which added to 22.30 chs., gives

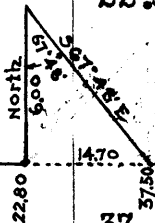
37.50 To flag at foot of bluff.

40.00 Set a sandstone 24x12x8 ins. 18 ins. in ground for ¼ sec. cor., marked ¼ on N. face, and raise a mound of stone 2 ft. base 1½ ft. high N. of cor.  
 No bearings available. Pits impracticable.

42.00 Canyon, 2 chs. wide 300 ft. deep, course NE., asc. prec.

72.00 Top of rocky spur, brs. NE. & SW.

Set a sandstone 20x10x10 ins. on bed-rock, in mound of stone for witness cor. to cor. of secs. 4, 5, 32 & 33, marked W.C. on NE. face, with 2 notches on W. & 4 notches E. edges, and raise a mound of stone 3 ft. base 2 ft. high W. of cor. No bearings available, pits impracticable.



x31

## Chains.

From this point, the line descends over precipitous succession of bluffs, down which it is clearly impossible to chain, or even walk.

It is impossible to establish the corners on this line throughout, as there is a descent of 3500 ft. to the bottom of Cherry Creek Canyon.

The corner of secs. 34 & 35 on S. bdy. falls in bottom of Canyon, in Cherry Creek, 5 chs. wide, course S. running water 40 lks. wide, 4 ins. deep.

I leave a large flag at the witness corner above described, for triangulation purposes, it being impossible to obtain a base line of sufficient length on W. side of canyon.

80.00 Point for cor. of secs. 4, 5, 32 & 33 falls in <sup>canyon</sup> June 8, 1910.

Note: Lines bet. Secs. 4 & 33 and 3 & 34 fall in Canyon, bet. triangulation points, June 9, 1910. The respective cor. are not established -

I proceed with great difficulty to the opposite side of Cherry Creek canyon, and at 9h a.m., l.m.t., I set off  $33^{\circ}54'$  N. on the lat. arc, and  $22^{\circ}55'$  N. on the decl. arc, and determine a true meridian with the solar. I locate the flag left by me on West side of canyon, on preceding evening, and by repeated trials, I determine a point on line, due East of this flag, which point falls on SW. point of bluff, which brs. SW. & NE. From this point, I measure carefully a base line of 60 chs. to the North, lining points at 55 and 60 chs. on this base, which I measure repeatedly, and take the mean of three measurements of the points at 55 and 60 chs.; which is the longest base obtainable.

At 55.00 chs., the flag on West side, brs. S.  $75^{\circ}41'$  W. Angle subtended by base is  $75^{\circ}41'$ ; Dist. across canyon is  $55.00 \times \text{tang. } 75^{\circ}41' = 215.50$  chs.

At 60.00 chs., the flag on West side, brs. S.  $74^{\circ}26\frac{1}{2}'$  W. Angle subtended by base is  $74^{\circ}26\frac{1}{2}'$ ; Dist. across canyon is  $60.00 \times \text{tang. } 74^{\circ}26\frac{1}{2}' = 215.50$  chs., which checks my triangulations, and added to 72.00 chs., gives

237.50 To triangulation point, on East side, which is therefore East, on S. bdy., bet. secs. 2 & 35,

47.50

As the point for  $\frac{1}{4}$  sec. cor. falls in a canyon from ESE. At this triangulation point, I

Set a sandstone  $30 \times 12 \times 12$  ins. on bed-rock, in mound of stone for witness cor. to  $\frac{1}{4}$  sec. cor., marked WC.  $\frac{1}{4}$  on W. face, and raise a mound of stone 4 ft. base, 3 ft. high N. of cor.

No bearings available. Pits, impracticable.

Thence, asc. along prec. S. slope.

67.00 Box canyon 2 chs. wide, 200 ft. deep, course WSW., asc. steep NW. slope.

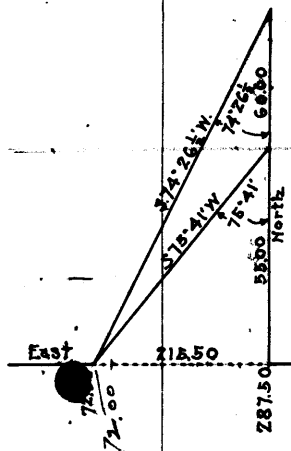
80.00 Set a quartz stone  $24 \times 15 \times 12$  ins. 18 ins. in ground for cor. of secs. 1, 2, 35 & 36, marked with 5 notches on W. and 1 notch on E. edges, and raise a mound of stone 2 ft. base  $1\frac{1}{2}$  ft. high W. of cor. from which,  
 An oak tree 12 ins. diam. brs. N.  $31^{\circ}$  E. 64 lks. dist., marked T. 7 N., R. 14 E., S. 36 B.T.  
 An oak tree 15 ins. diam. brs. S.  $41^{\circ}$  E. 73 lks. dist., marked T. 6 N., R. 14 E., S. 1 B.T.  
 An oak tree 15 ins. diam. brs. S.  $35^{\circ}$  W. 41 lks. dist., marked T. 6 N., R. 14 E. S. 2 B.T.  
 An oak tree 6 ins. diam. brs. N.  $17\frac{1}{2}^{\circ}$  W. 67 lks. dist., marked T. 7 N., R. 14 E. S. 35 B.T.

For last four miles,

Land, mts., Soil, 3rd rate, very stony.

Timber, Pine, oak. Undergrowth, scrub oak, manzanita.

Mts. land, heavily timbered or covered with dense undergrowth, exceptionally difficult to survey, 220.00 chs.



## Chains.

East, bet. secs. 1 & 36.  
 Over mts. land, asc. steep, through dense scrub oak,  
 with great difficulty.

3.30 NW. point of spur, brs. NW. & SE., desc. NE. slope.  
 19.00 Gulch 50 lks. wide, course NW., asc. SW. slope.  
 40.00 Set a sandstone 24x12x3 ins. 18 ins. in ground for  
 $\frac{1}{4}$  sec. cor., marked  $\frac{1}{4}$  on N. face, from which,  
 A juniper tree 24 ins. diam. brs. S. 87° E. 54 lks. dist.  
 marked  $\frac{1}{4}$  S. 1 B.T.  
 An oak tree 10 ins. diam. brs. N. 52° W. 23 lks. dist.,  
 marked  $\frac{1}{4}$  S. 36 B.T.

40.60 Top of N. pt. of butte, brs. N. & S. desc.  
 59.50 Gulch 50 lks. wide, course SE., asc.  
 80.00 Set a quartzite stone 24x10x10 ins. 18 ins. in ground,  
 for cor. of Tps. 6 & 7 N., Rs. 14 & 15 E., marked  
 with 6 notches on N., S., E. & W. edges, and raise a  
 mound of stone 4 ft. base 3 ft, high S. of cor.,  
 from which,  
 An oak tree 14 ins. diam. brs. N. 61° E. 70 lks. dist.,  
 marked T. 7 N., R. 15 E. S. 31 B.T.  
 An oak tree 15 ins. diam. brs. S. 60° E. 111 lks. dist.,  
 marked T. 6 N., R. 15 E. S. 6 B.T.  
 An oak tree 14 ins. diam. brs. N. 80° W. 78 lks. dist.,  
 marked T. 7 N., R. 14 E. S. 36 B.T.

No other bearings available. Pits impracticable.  
 Land, mts. very rough and broken.  
 Soil, 3rd rate, very stony.  
 Timber, scattering oak, juniper.  
 Undergrowth, scrub oak, manzanita.  
 Mts. land or land covered with dense undergrowth,  
 exceptionally difficult to survey, 80.00 chs.  
 June 9, 1910.

## General Description.

The South Boundary of T. 7 N., R. 14 E., passes over  
 an extremely rough country, the Western portion is heavily  
 timbered with pine and oak, the eastern portion  
 being covered with a dense undergrowth, of scrub oak,  
 and loess, shaly stone, being practically impassable.  
 The land North of the line is very rough and broken,  
 the elevations varying from 6500 ft. to 3500 ft.  
 At about 2 miles South of the middle portion, the Cherry  
 Creek valley broadens somewhat, and there is some good  
 agricultural land already under cultivation by several  
 settlers. A portion of T. 6 N., R. 14 E. should be  
 subdivided. There are no roads, hardly even a passable  
 trail, however, in Tps. 6 & 7 N., R. 14 E.

June 9, 1910.

*Jesse B. Wright*  
 U.S. Deputy Surveyor.

## Chains.

June 10, 1910.

At 7h a.m., l.m.t., at the cor. of Tps. 6 & 7 N., Rs. 14 & 15 E., as established by me, I set off  $33^{\circ}54'$  N. on the lat. arc, and  $23^{\circ}$  N. on the decl. arc, and determine a true meridian with the solar. Thence I run,

East, on S. Bdy. T. 7 N., R. 15 E., bet. secs. 6 & 31.  
Var.  $14^{\circ}30'$  E.

Over mts. land, desc. very stony NE. slope, through dense scrub oak and manzanita, with great difficulty.

- 20.00 Gulch, 80 lks. wide, course SE., asc.  
25.00 Spur, brs. S. & N., desc.  
32.00 Gulch 30 lks. wide, course S., asc. prec.  
40.00 Set a sandstone  $24 \times 15 \times 6$  ins. 18 ins. in ground for  $\frac{1}{4}$  sec. cor. marked  $\frac{1}{4}$  on N. face, and raise a mound of stone 2 ft. base  $1\frac{1}{2}$  ft. high N. of cor.  
No bearings available. Pits impracticable.  
66.00 Spur, brs. SSW. & NNE., desc. steep.  
Spring and small mining camp, known as Horse Camp, brs. South, about 30.00 chs. dist.  
80.00 Set a sandstone  $24 \times 12 \times 8$  ins. 18 ins. in ground for cor. of secs. 5, 6, 31 & 32, marked with 1 notch on W. & 5 notches on E. edges, and raise a mound of stone 2 ft. base,  $1\frac{1}{2}$  ft. high W. of cor.  
No bearings available. Pits impracticable.  
Land, mts. Soil, 3rd rate, stony.  
Timber, scattering oak, juniper.  
Undergrowth, scrub oak, manzanita, buckbrush, thorn.  
Mts. land covered with dense undergrowth, exceptionally difficult to survey, 80.00 chs.

East, bet. secs. 5 & 32.

Over mts. land, desc. very stony broken ground, through dense scrub oak, with great difficulty.

- 2.00 Box Canyon 50 lks. wide, 50 ft. deep, course SW., asc.  
7.80 Spur, brs. SSW. & NNE., desc. prec.  
13.00 Main Canyon, 3 chs. wide, 150 ft. deep, course WSW. asc.  
20.00 Same canyon, course WNW.  
32.00 Same canyon, course WSW., asc. prec. NW. slope.  
40.00 Set a sandstone  $28 \times 10 \times 8$  ins. 12 ins. in ground, on bed-rock in mound of stone for  $\frac{1}{4}$  sec. cor., marked  $\frac{1}{4}$  on N. face, and raise a mound of stone 3 ft. base 2 ft. high N. of cor., from which,  
An oak tree 24 ins. diam. brs. S.  $50^{\circ}$  W. 83 lks. dist., marked  $\frac{1}{4}$  S. 5 B.T.  
No other bearings available. Pits impracticable.  
47.00 Spur, brs. NNW. & SSE., desc.  
54.00 Gulch 50 lks. wide, course N., asc.  
62.20 Rocky spur, brs. N. & S., desc.  
70.00 Gulch 50 lks. wide, course NNW. asc.  
80.00 Set a sandstone  $24 \times 12 \times 8$  ins. 18 ins. in ground for cor. of secs. 32, 33, 4 & 5, marked with 2 notches on W. and 4 notches on E. edges, and raise a mound of stone 3 ft. base 2 ft. high W. of cor.  
No bearings available. Pits impracticable.  
Land, mts. Soil, 3rd rate, very stony.  
Undergrowth, scrub oak, manzanita.  
Timber, scattering oak and juniper.  
Mts. land, or land covered with dense undergrowth, exceptionally difficult to survey, 80.00 chs.  
At this cor. at 11h 59m a.m., l.m.t., I set off  $23^{\circ}$  N. on the decl. arc, and observe the sun on the meridian. The resulting lat. is  $33^{\circ}54'$  N.

Chains. East, bet. secs. 4 & 33.  
 Over mts. land, asc. over broken N. slope, through dense scrub oak and manzanita, with great difficulty.

2.00 Spur, brs. N. & S., desc.  
 15.00 Gulch 50 lks. wide, course NNE., asc.  
 28.00 Spur, brs. NNE., desc.  
 40.00 Set a sandstone 24x12x8 ins. 18 ins. in ground for  $\frac{1}{4}$  sec. cor., marked  $\frac{1}{4}$  on N. face, and raise a mound of stone 2 ft. base  $1\frac{1}{2}$  ft. high N. of cor.  
 No bearings available. Pits impracticable.  
 62.00 Gulch 80 lks. wide, course NNE., asc. broken NW. slope.  
 80.00 Set a sandstone 24x14x8 ins. 18 ins. in ground for cor. of secs. 3, 4, 33 & 34, marked with 3 notches on E. & W. edges, and from which,  
 An oak tree 12 ins. diam. brs. N. 59° E. 47 lks. dist., marked T. 7 N., R. 15 E. S. 34 B.T.  
 An oak tree 12 ins. diam. brs. S. 11° E. 25 lks. dist., marked T. 6 N., R. 15 E. S. 3 B.T.  
 An oak tree 14 ins. diam. brs. S. 58° W. 45 lks. dist., marked T. 6 N., R. 15 E. S. 4 B.T.  
 An oak tree 14 ins. diam. brs. N. 57 $\frac{1}{2}$ ° W. 57 lks. dist., marked T. 7 N., R. 15 E. S. 33 B.T.

Land, mts.  
 Soil, 3rd rate, stony.  
 Timber, scattering oak, juniper, pine.  
 Undergrowth, scrub oak, manzanita.  
 Mts. land covered with dense undergrowth, exceptionally difficult to survey, 80.00 chs.  
 June 10, 1910.

June 11, 1910.

At 7h a.m., l.m.t., at the cor. of secs. 3, 4, 33 & 34, I set off 33° 54' N. on the lat. arc, and 23° 4 $\frac{1}{2}$ ' N. on the decl. arc, and determine a true meridian with the solar.

Thence I run,

East, bet. secs. 3 & 34.

Over mts. land, asc. through dense, heavy oak and juniper, with great difficulty.

3.00 Top of ridge, brs. N. & S., desc.  
 15.00 Gulch 80 lks. wide, course N., asc. NW. slope.  
 25.00 Top dividing ridge is S. 4 chs.  
 30.00 Top of dividing ridge, brs. NE. & SW., desc. SE. slope.  
 40.00 Set a limestone 20x10x8 ins. 15 ins. in ground for  $\frac{1}{4}$  sec. cor., marked  $\frac{1}{4}$  on N. face, and from which,  
 An oak tree 20 ins. diam. brs. N. 50° W. 33 lks. dist., marked  $\frac{1}{4}$  S. 34 B.T.  
 An oak tree 12 ins. diam. brs. S. 72 $\frac{1}{2}$ ° W. 54 lks. dist., marked  $\frac{1}{4}$  S. 3 B.T.

46.00 Head of gulch, course SE., asc. SW. slope.  
 65.00 Top of dividing ridge, brs. E. & NW., thence on same.  
 70.00 Desc. NE. slope.  
 80.00 Set a limestone 24x12x12 ins. 18 ins. in ground for cor. of secs. 2, 3, 34 & 35, marked with 4 notches on W. and 2 notches on E. edges, from which,  
 An oak tree 15 ins. diam. brs. N. 45° E. 44 lks. dist., marked T. 7 N., R. 15 E. S. 35 B.T.  
 An oak tree 20 ins. diam. brs. S. 86° E. 38 lks. dist., marked T. 6 N., R. 15 E. S. 2 B.T.  
 An oak tree 10 ins. diam. brs. S. 33° W. 68 lks. dist., marked T. 6 N., R. 15 E. S. 3 B.T.  
 A juniper tree 24 ins. diam. brs. N. 53° W. 46 lks. dist., marked T. 7 N., R. 15 E. S. 34 B.T.

Land, mts. Soil, 3rd rate, stony.  
 Timber, heavy oak, juniper, scattering pine.  
 Undergrowth, scrub oak, manzanita.  
 Mts. land, heavily timbered, exceptionally difficult to survey, 80.00 chs.

## South Boundary of T. 7 N., R. 15 E.

## Chains.

- East, on S. Bdy. bet. secs. 2 & 35.  
Over mts. land, desc. NE. slope, through dense scrub oak and manzanita, and heavy oak timber, with great difficulty.
- 32.50 Gulch 50 lks. wide, course ESE., asc. SE. slope.
- 37.34 Wire fence, brs. N. & S.
- 38.60 Intersect West Boundary of White Mountain or Fort Apache Indian Reservation.
- Set a limestone 24x10x6 ins. 18 ins. in ground for closing cor. of Tps. 6 & 7 N., R. 15 E., marked C.C. R. 15 E., on W., W.M.I.R. on E., with 6 grooves on N. & S. faces, and raise a mound of stone 4 ft. base 3 ft. high W. of cor. from which,
- A juniper tree 30 ins. diam. brs. N. 35° W. 58 lks. dist., marked T. 7 N., R. 15 E. S. 35 B.T.
- An oak tree 10 ins. diam. brs. S. 52° W. 64 lks. dist., marked T. 6 N., R. 15 E. S. 2 B.T.
- The 27½ mile cor. on West Boundary of Fort Apache Indian Reservation, brs. North, 15.80 chs., dist., which is a limestone 13x10x8 ins. above ground, marked and witnessed as described by the Surveyor General.
- Land, mts.  
Soil, 3rd rate, stony.  
Timber, oak, juniper, scattering pine.  
Undergrowth, scrub oak, manzanita.  
Mts. land, heavily timbered, exceptionally difficult to survey, 38.60 chs.

June 11, 1910.

## General Description.

The South Boundary of T. 7 N., R. 15 E., passes over a very broken country, ascending from the west to the East. The western portion is covered with dense undergrowth, with scattering timber. Fair grazing land. The Eastern portion is covered with heavy oak and juniper timber, and also a fine growth of native grass. South of the line the land is good grazing, being a broken divide, lying between Cherry Creek and Canyon Creek. In this region considerable prospecting is being done, there being some indication of copper gold, and silver. No mines developed as yet.

June 11, 1910.

*Jesse B. Wright*  
U.S. Deputy Surveyor.



## Chains.

June 11, 1910.

At 5h p.m., l.m.t., at the cor. of Tps. 6 & 7 N., Rs. 14 & 15 E., recently established by me, I examine and test carefully all the adjustments of the transit and solar attachment, and find same correct.

I establish a true meridian with the solar, which meridian I test and verify by observation on Polaris this night, and find correct.

June 11, 1910.

June 12, 1910.

At 7h a.m., l.m.t., at the cor. above described,

I set off  $33^{\circ}54'$  N. on the lat. arc, and  $23^{\circ}8\frac{1}{2}'$  N. on the decl. arc, and determine a true meridian with the solar, which meridian co-incides with the meridian established by the solar on preceding evening, and verified by Polaris observation.

Thence I run,

North, bet. secs. 31 & 36.

Over mts. land, desc. NE. slope, through dense scrub oak, with great difficulty.

6.00 Gulch 50 lks. wide, course SE., asc. prec. SW. slope, over very rough stony ground..

40.00 Cor. point falls on perishable ground, therefore, at

46.00 Set a sandstone 24x12x8 ins. 8 ins. in ground, to bed-rock in mound of stone for witness cor. to  $\frac{1}{4}$  sec. cor. marked W.C.  $\frac{1}{4}$  on W. face, and raise a mound of stone 3 ft. base 2 ft. high W. of cor.

No bearings available. Pits impracticable.

Asc. over loose, stones with great difficulty.

68.45 Top of bluff, brs. NW. & SE., thence over mesa, through heavy juniper and oak.

70.00 Desc. grad.

80.00 Set a sandstone 24x12x8 ins. 18 ins. in ground for cor. of secs. 25, 30, 31 & 36, marked with 1 notch on S. & 5 notches on N. edges, and from which,

A juniper tree 10 ins. diam. brs. N.  $51^{\circ}$  E. 112 lks. dist., marked T. 7 N., R. 15 E. S. 30 B.T.

A juniper tree 30 ins. diam. brs. S.  $59^{\circ}$  E. 64 lks. dist., marked T. 7 N., R. 15 E. S. 31 B.T.

A juniper tree 14 ins. diam. brs. S.  $8^{\circ}$  W. 24 lks. dist., marked T. 7 N., R. 14 E. S. 36 B.T.

A juniper tree 14 ins. diam. brs. N.  $31^{\circ}$  W. 65 lks. dist., marked T. 7 N., R. 14 E. S. 25 B.T.

Land, mts.

Soil, 3rd rate, very stony.

Timber, oak, juniper.

Undergrowth, scrub oak,

Mts. land, heavily timbered or covered with dense undergrowth, exceptionally difficult to survey, 80.00 chs.

At this cor. at 11h 59 $\frac{1}{2}$ M a.m., l.m.t., I set off  $23^{\circ}9'$  N. on the decl. arc, and observe the sun on the meridian. The resulting lat. is  $33^{\circ}55'$  N.

Chains.

North, bet. secs. 25 & 30.

Over mts. land, desc. over stony ground, through heavy oak and juniper, with great difficulty.

40.00 Set a granite stone 24x12x6 ins. 18 ins. in ground for 1/4 sec. cor. marked 1/4 on W. face, from which, A juniper tree 20 ins. diam. brs. S. 73° E. 21 lks. dist., marked 1/4 S. 30 B.T.

A juniper tree 10 ins. diam. brs. S. 13° W. 36 lks. dist., marked 1/4 S. 25 B.T.

40.90 Gulch 80 lks. wide, course ESE., asc. SE. slope.

67.00 Top of high rocky ridge, brs. SW. & NE., Elevl. 6200 ft. Desc. stony NW. slope.

80.00 Set a granite stone 24x13x10 ins. 18 ins. in ground for cor. of secs. 19, 24, 25 & 30, marked with 2 notches on S. & 4 notches on N. edges, and raise a mound of stone 3 ft. base 2 ft. high W. of cor., from which, An oak tree 20 ins. diam. brs. N. 48° E. 3 lks. dist., marked T. 7 N., R. 15 E. S. 19 B.T. An oak tree 12 ins. diam. brs. S. 71° E. 65 lks. dist., marked T. 7 N., R. 15 E. S. 30 B.T. An oak tree 14 ins. diam. brs. S. 23° W. 20 lks. dist., marked T. 7 N., R. 14 E. S. 25 B.T. An oak tree 15 ins. diam. brs. N. 32° W. 47 lks. dist., marked T. 7 N., R. 14 E. S. 24 B.T.

Land, mts. Soil, 3rd rate, stony. Timber, heavy oak, juniper, scattering pine. Undergrowth, scrub oak. Mts. land, or land heavily timbered, exceptionally difficult to survey, 80.00 chs.

North, bet. secs. 19 & 24.

Over mts. land, desc. stony NW. slope, through heavy juniper and oak timber, with great difficulty.

36.00 Leave timber, brs. E. & W., enter open grassy space.

40.00 Set a sandstone 24x10x8 ins. 18 ins. in ground for 1/4 sec. cor. marked 1/4 on W. face, and raise a mound of stone 4 ft. base 3 ft. high W. of cor., from which, An oak tree 10 ins. diam. brs. S. 36 1/2° E. 106 lks. dist., marked 1/4 S. 19 B.T.

A juniper tree 24 ins. diam. brs. N. 48° W. 149 lks. dist., marked 1/4 S. 24 B.T.

46.00 Gulch 150 lks. wide, course WSW., asc. SE. slope.

60.00 Enter heavy oak and juniper timber.

80.00 Set a sandstone 24x12x8 ins. 18 ins. in ground for cor. of secs. 13, 13, 19 & 24, marked with 3 notches on N. & S. edges, and raise a mound of stone 3 ft. base 2 ft. high W. of cor. from which, An oak tree 12 ins. diam. brs. S. 9° W. 50 lks. dist., marked T. 7 N., R. 14 E. S. 24 B.T. An oak tree 12 ins. diam. brs. N. 75° W. 10 lks. dist., marked T. 7 N., R. 14 E. S. 13 B.T.

No other bearings available. Pits impracticable.

Land, mts., Soil, 3rd rate, stony. good grazing. Timber, Oak, juniper, scattering pine. Undergrowth, scrub oak.

Mts. land, or land heavily timbered, exceptionally difficult to survey, 80.00 chs.

June 12, 1910.

## Chains.

June 13, 1910.

At 7h a.m., 1.m.t., at the cor. of secs. 13, 18, 19 & 24, I set off  $33^{\circ}56\frac{1}{2}'$  N. on the lat. arc, and  $23^{\circ}12\frac{1}{2}'$  N. on the decl. arc, and determine a true meridian with the solar, thence, I run,

North, bet. secs. 13 & 18.

Over mts. land, asc. stony SE. slope, through pine, oak, and juniper timber, with great difficulty.

- 9.00 Top of high ridge, brs. WNW. & ESE., elev. 6000 ft.  
Top of castle peak on same, brs. East, 20 chs. dist.  
Desc. steep N. slope.
- 10.70 Wire fence, brs. WNW. & ESE.
- 20.00 Desc. prec. NW. slope.
- 40.00 Set a sandstone  $24 \times 12 \times 3$  ins. 18 ins. in ground for  $\frac{1}{4}$  sec. cor. marked  $\frac{1}{4}$  on W. face, and from which,  
An oak tree 12 ins. diam. brs.  $S. 56\frac{1}{2}^{\circ} E.$  32 lks. dist.,  
marked  $\frac{1}{4}$  S. 18 B.T.  
A juniper tree 36 ins. diam. brs.  $S. 29^{\circ} W.$  64 lks. dist.,  
marked  $\frac{1}{4}$  S. 13 B.T.,
- 55.00 Canyon 5 chs. wide, 200 ft. deep, course WSW. Elev. 4800 ft.  
Asc. steep, broken SW. slope, through dense scrub oak.
- 80.00 Set a sandstone  $24 \times 14 \times 8$  ins. 18 ins. in ground for cor. of secs. 7, 12, 13 & 18, marked with 4 notches on S. & 2 notches on N. edges, and raise a mound of stone 2 ft. base  $1\frac{1}{2}$  ft. high W. of cor.  
No bearings available. Pits impracticable.  
Land, mts. Soil, 3rd rate, stony.  
Timber, pine, oak, juniper.  
Undergrowth, scrub oak, manzanita, buckbrush.  
Mts. land, heavily timbered or covered with dense undergrowth, exceptionally difficult to survey, 80.00 chs.

North, bet. secs. 7 & 12.

Over mts. land, asc. broken, stony SW. slope, through dense scrub oak, with great difficulty.

- 10.00 Head of gulch, course SW.
- 30.00 High rocky peak, brs. East 22 chs.
- 39.00 Head of gulch, course WNW.
- 40.00 Set a sandstone  $30 \times 13 \times 15$  ins., on bed-rock, in mound of stone for  $\frac{1}{4}$  sec. cor. marked  $\frac{1}{4}$  on W. face, from which,  
An oak tree 10 ins. diam. brs.  $S. 53^{\circ} W.$  44 lks. dist.,  
marked  $\frac{1}{4}$  S. 12 B.T.  
An oak tree 6 ins. diam. brs.  $S. 64\frac{1}{2}^{\circ} E.$  49 lks. dist.,  
marked  $\frac{1}{4}$  S. 7 B.T.
- 57.30 Top of ridge, brs. W.N.W. & E.S.E., desc. prec.
- 63.00 S. rim of canyon, brs. E. & W., desc. abrupt.
- 72.00 Canyon, 10 chs. wide, 300 ft. deep, course WNW. asc. prec.
- 80.00 Set a sandstone  $30 \times 12 \times 10$  ins. 8 ins. in ground to bed-rock, in mound of stone for cor. of secs. 1, 6, 7 & 12, marked with 5 notches on S. & 1 notch on N. edges, and raise a mound of stone 3 ft. base 2 ft. high W. of cor. from which,  
An oak tree 6 ins. diam. brs.  $S. 32^{\circ} W.$  60 lks. dist.,  
marked T. 7 N., R. 14 E. S. 12 B.T.  
No other bearings available. Pits impracticable.  
Land, mts. Soil, 3rd rate, stony.  
Timber, oak, juniper.  
Undergrowth, scrub oak.  
Mts. land, covered with dense undergrowth, exceptionally difficult to survey, 80.00 chs.  
At this cor. at 12 m., 1.m.t., I set off  $23^{\circ}12\frac{1}{2}'$  N. on the decl. arc., and observe the sun on the meridian.  
The resulting lat. is  $33^{\circ}58' N.$

177

Chains.

North, bet. secs. 1 & 6.  
 Over mts. land, asc. grad. over very stony ground, with great difficulty.

10.00 Top of high spur, brs. WNW. & ESE., desc.  
 As cor. point will fall on bluff, at

34.80 Set a sandstone 24x12x8 ins. 18 ins. in ground for witness cor. to  $\frac{1}{4}$  sec. cor. marked W.C.  $\frac{1}{4}$  on W. face, and raise a mound of stone 3 ft. base 2 ft. high W. of cor. from which.  
 A juniper tree 20 ins. diam. brs. N. 62 $\frac{1}{2}$ ° E. 146 lks. dist., marked  $\frac{1}{4}$  S. 6 W.C.B.T.  
 No other bearings available. Pits impracticable.

35.00 Desc. prec.

40.00 Cor. point on bluff, faces N.

50.00 Box canyon 5 chs. wide, 250 ft. deep, course W. asc. prec.

55.00 Top N. rim, asc. steep, through dense scrub oak and manz.

80.00 Set a limestone 24x14x12 ins. 18 ins. in ground for cor. of Tps. 7 & 8 N., Rs. 14 & 15 E., marked with six notches on N., S., E. & W., edges, and raise a mound of stone 4 ft. base 4 ft. high S. of cor.  
 No bearings available. Pits impracticable.

Land, mts., very broken.  
 Soil, stony, 3rd rate. fair grazing.  
 Timber, scattering oak, juniper, cedar.  
 Undergrowth, scrub oak, manzanita, ocotillo.  
 Mts. land, rough and broken, exceptionally difficult to survey, 80.00 chs.

June 13, 1910.

General Description.

The East Boundary of T. 7 N., R. 14 E., passes over a very rough broken country, a succession of ridges and box canyons, trending to the West, to the main canyon of Cherry Creek, which has a general Southerly direction almost paralleling the line from 2 to 4 miles to the west.  
 The middle portion of the line is well timbered with pine, oak, and juniper.  
 No water on this line. Northern portion barren.

June 13, 1910.

*Jesse B. Wright*  
 U.S. Deputy Surveyor.

Chains.

June 14, 1910.  
 At 7h a.m., l.m.t., at the cor. of Tps. 7 & 8 N., Rs. 14 & 15 E., recently established by me and heretofore described, I set off 33°59' N. on the lat. arc, and 23°16' N. on the decl. arc, and determine a true meridian with the solar. Thence I run, as per instructions, West, on a random line, on N. Bdy. of T. 7 N., R. 14 E. Var. 14°25' E.  
 At 5 miles, 78.40 chs. I intersect the West Boundary of Tp. at point 30 lks. S. of the cor. of Tps. 7 & 8 N., Rs. 13 & 14 E., as recently established by me and heretofore described.  
 Thence, I run, S. 89°58' E., on a true line, on N. Bdy., bet. secs. 6 & 31. Over mts. land, asc. SW. slope, through dense scrub oak and manzanita, with great difficulty.  
 6.00 Top of rise, desc. SE. slope.  
 14.70 Rocky gulch 30 lks. wide, course SE., thence along near foot of S. slope.  
 22.80 Trail, brs. NE. & SW.  
 25.47 Gulch 120 lks. wide, course WSW. Upper Dinner Creek. Small seep of water in same.  
 31.00 Old corral 4 chs. S. Gulch, course WSW.  
 34.25 Same gulch, course WNW.  
 38.40 Set a quartzite stone 24x10x6 ins. 18 ins. in ground for 1/4 sec. cor. marked 1/4 on N. face, from which, A pine tree 26 ins. diam. brs. N. 25° E. 46 lks. dist., marked 1/4 S. 31 B.T.  
 A pine 36 ins. diam. brs. S. 54° W. 32 lks. dist., marked 1/4 S. 6 B.T.  
 Asc. broken NW. slope, through heavy pine and oak.  
 75.00 Top of mesa, brs. NE. & SW., thence over grassy mesa, through scattering juniper.  
 78.40 Set a sandstone 16x8x4 ins. 10 ins. in ground for cor. of secs. 5, 6, 31 & 32, marked with 1 notch on W. and 5 notches on E. edges, and raise a mound of stone 3 ft. base 2 ft. high W. of cor. from which, A juniper tree 30 ins. diam. brs. N. 13° W. 63 lks. dist., marked T. 7 N., R. 14 E. S. 31 B.T.  
 A juniper tree 20 ins. diam. brs. S. 57 1/2° E. 97 lks. dist., marked T. 7 N., R. 14 E. S. 5 B.T.  
 No other bearings available. Pits impracticable.  
 Land, mts. Soil, stony, 3rd rate.  
 Timber, juniper, pine, oak,  
 Undergrowth, scrub oak, manzanita, good grass on mesa.  
 Mts. land, or land covered with heavy timber or dense undergrowth, exceptionally difficult to survey,  
 78.40 chs.

S. 89°58' E., bet. secs. 5 & 32.  
 Over rolling mesa, through heavy juniper timber. with great difficulty.  
 10.00 Desc. grad.  
 14.83 Bluff, brs. NNE. & SSW., desc. abrupt,  
 30.00 Foot of main slope, brs. N. & S. enter jungle of scrub oak and manzanita.  
 40.00 Set a syenite stone 24x12x8 ins. 18 ins. in ground for 1/4 sec. cor. marked 1/4 on N. face, and raise a mound of stone 2 ft. base 1 1/2 ft. high N. of cor.  
 No bearings available. Pits impracticable.  
 At this vor. at 12m, l.m.t., I set off 23°16' N. on the decl. arc, and observe the sun on the meridian,  
 The resulting lat. is 33°59' N.

Chains.

- 50.00 Gulch , 30 lks. wide, course SSE., asc.
  - 65.00 Point of high spur, brs. NNE. & SSW., desc. steep.
  - 76.00 Canyon 3 chs. wide, 200 ft. deep, course S., asc. steep.
  - 80.00 Set a sandstone 24x12x8 ins. 18 ins. in ground for cor. of secs. 4,5, 32 & 33, marked with 2 notches on W. and 4 notches on E. edges, and from which,  
 An oak tree 12 ins.diam.brs. N.31°E. 72 lks.dist., marked T. 8 N.,R. 14 E. S. 33 B.T.  
 An oak tree 12 ins.diam.brs. S.71°E. 60 lks.dist., marked T. 8 N.,R. 14 E. S. 4 B.T.  
 An oak tree 12 ins.diam.brs. S.37°W. 17 lks.dist., marked T. 7 N.,R. 14 E. S. 5 B.T.  
 An oak tree 12 ins.diam.brs. N.29°W. 50 lks.dist., marked T. 8 N.,R. 14 E. S. 32 B.T.
- Land, mts., very rough.  
 Soil, 3rd rate stony, gravelly. fair grazing.  
 Timber, juniper, oak.  
 Undergrowth, dense scrub oak, manzanita.  
 Mts. land, or land ceovered with heavy timber or dense undergrowth, exceptionally difficult to survey, 80.00 chs.  
 Elev. at this cor. 4200 ft.

S. 89°58' E., bet. secs. 4 & 33 .

Over mts. land, asc. through dense oak and juniper, with great difficulty.

- 2.00 Point of spur, brs. SW. & NE., desc.
- 3.50 Gulch 50 lks. wide; course SW., asc. grad.
- 16.00 Foot of prec. W. slope, brs. N. & S. Impossible to chain accurately up this slope, so I send a man ahead, and place a flag on line near top of slope.  
 I run a base line, North, 0°2'E. 7.00 chs. to a point, from which the flag brs. S. 71°30'E. The angle subtended by the base is therefore 71°32'. Distance to flag is  $7.00 \times \tan. 71^\circ 32' = 20.96$  chs., which added to 16 chs., gives,

36.96 To Flag, top of prec. West slope, brs. N. & S.

- 40.00 Set a quartzite stone 20x12x3 ins. 15 ins. in ground for  $\frac{1}{4}$  sec. cor. marked  $\frac{1}{4}$  on N. face, from which,  
 An oak tree 12 ins.diam.brs. S.12 $\frac{1}{4}$ °W. 13 lks.dist., marked  $\frac{1}{4}$  S. 4 B.T.  
 An oak tree 8 ins. diam.brs. N.43° W. 23 lks.dist., marked  $\frac{1}{4}$  S. 33 B.T.

60.00 Top of Mountain, brs. N. & S., Elev. 4600 ft.

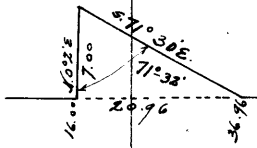
68.00 Desc. prec. E. slope, through jungle of scrub oak and thorn.

- 79.40 As cor. pt. falls on loose shaly stone, at this point I set a sandstone 24x12x3 ins. 18 ins. in ground for witness cor. to cor. of secs. 3,4,33 & 34, marked W.C. on N.E. face, with 3 notches on E. & W. edges, and raise a mound of stone 3 ft. base 2 ft. high W. of cor. No bearings avaiable. Pits impracticable.

80.00 Cor. point of secs. 3,4, 33 & 34.

Land, mountainous.  
 Soil, 3rd rate, stony.  
 Timber, oak, pine, juniper.  
 Undergrowth, scrub oak, manzanita, thorn.  
 Mts. land or land covered with dense undergrowth, and exceptionally difficult to survey, 80.00 chs.

June 14, 1910.



## Chains.

- June 15, 1910.  
 At 7h a.m., 1.m.t., at the cor. of secs. 3, 4, 33 & 34,  
 I set off  $33^{\circ}59'$  N. on the lat. arc and  $23^{\circ}19'$  N. on  
 the decl. arc and determine a true meridian with the  
 solar.  
 Thence I run, from true point for cor.  
 $S. 89^{\circ}53'$  E., bet. secs. 3 & 34.  
 Over mts. land, desc. through dense manzanita and scrub  
 oak, with great difficulty.
- 40.00 Set a sandstone  $24 \times 10 \times 8$  ins. 18 ins. in ground for  
 $\frac{1}{4}$  sec. cor. marked  $\frac{1}{4}$  on N. face, and raise a mound of  
 stone 2 ft. base  $1\frac{1}{2}$  ft. high N. of cor.  
 No bearings available. Pits impracticable.
- 45.00 Desc. steep NE. slope.
- 60.00 Canyon, 150 lks. wide, course SE., asc.
- 74.00 Top of mesa, brs. SE. & NW.
- 80.00 Set a limestone  $30 \times 10 \times 6$  ins. on bed-rock, in mound of  
 stone for cor. of secs. 23, 34 & 35, marked with 4 notches  
 on W. and 2 notches on E. edges, and raise a mound of  
 stone 4 ft. base 3 ft. high W. of cor. from which,  
 A juniper tree 30 ins. diam. brs.  $S. 53^{\circ} E.$  102 lks. dist.,  
 marked T. 7 N., R. 14 E. S. 2 B.T.  
 A juniper tree 8 ins. diam. brs.  $S. 66\frac{1}{2}^{\circ} W.$  16 lks. dist.,  
 marked T. 7 N., R. 14 E. S. 3 B.T.  
 No other bearings available. Pits impracticable.  
 Land, mts. soil, 3rd rate, stony.  
 Timber, scattering oak and juniper.  
 Undergrowth, scrub oak, manzanita, thorn.  
 Mountainous land, covered with dense undergrowth, and  
 exceptionally difficult to survey, 80.00 chs.
- 
- $S. 89^{\circ}53'$  E., bet. secs. 2 & 35.  
 Over mts. land asc. grad. along broken stony, S. edge  
 of mesa, with great difficulty.
- 20.00 Top of mesa, brs. SE. & NW.  
 As point for  $\frac{1}{4}$  sec. cor. will fall in Cherry Creek canyon  
 at
- 35.00 On W. rim of canyon, brs. N. & S., I  
 Set a limestone  $30 \times 15 \times 10$  ins. on bed-rock, in mound of  
 stone for witness cor. to  $\frac{1}{4}$  sec. cor. marked W.C.  $\frac{1}{4}$  on  
 N. face, and raise a mound of stone 4 ft. base 3 ft. h  
 high N. of cor., from which,  
 A cedar tree 8 ins. diam. brs.  $N. 28^{\circ} E.$  71 lks. dist.,  
 marked  $\frac{1}{4}$  S. 35 W.C. B.T.  
 No other bearings available. Pits impracticable. Desc. prec.
- 40.00 Cor. point falls in Cherry Creek, 5 chs. wide, course S.  
 running water 15 lks. wide, 4 ins. deep.
- 45.00 Asc. steep SW. slope.
- 68.20 Gulch, 30 lks. wide, course S., thence along steep, stony  
 S. slope.
- 80.00 Set a limestone  $30 \times 24 \times 14$  ins., on bed-rock, in mound of  
 stone for cor. of secs. 1, 2, 33 & 36, marked with 5  
 notches on W. and 1 notch on E. edges, and raise a  
 mound of stone 2 ft. base  $1\frac{1}{2}$  ft. high W. of cor.  
 No bearings available. Pits impracticable.  
 Land, mts. Soil, stony 3rd rate.  
 Timber, oak, pinon, cottonwood, sycamore in canyon.  
 Undergrowth, scrub oak manzanita.  
 Mts. land, exceptionally difficult to survey, 80.00 chs.  
 At this cor. at 12m, I set off  $23^{\circ}18\frac{1}{2}'$  N. on the decl.  
 arc and observe the sun on the meridian.  
 The resulting lat. is  $33^{\circ}59'$  N.

Chains.	<p>c S. 89°58' E., bet. secs. 1 &amp; 36.          Over mts. land, asc. steep, stony S. slope, through dense scrub oak, with great difficulty.</p> <p>14.60 Wilson creek, 1 ch. wide, course SW.</p> <p>19.00 Same creek, course NW.,</p> <p>32.10 Same creek, course SW., asc. steep NW. slope.</p> <p>40.00 Set a limestone 24x12x6 ins. 18 ins. in ground for <math>\frac{1}{4}</math> sec. cor. marked <math>\frac{1}{4}</math> on N. face, and from which,          An oak tree 8 ins. diam. brs. N. 11<math>\frac{1}{2}</math>° W. 67 lks. dist., marked <math>\frac{1}{4}</math> S. 36 B.T.          A juniper tree 12 ins. diam. brs. S. 69° W. 38 lks. dist. marked <math>\frac{1}{4}</math> S. 1 B.T.</p> <p>Asc. prec. from cor.</p> <p>49.25 Top of N. point, desc. prec.</p> <p>52.00 Canyon 4 chs. wide, 200 ft. deep,, course NW. asc. prec.</p> <p>56.60 East rim of canyon, brs. NW. &amp; SE. ascend.</p> <p>71.00 Top of stony mesa, brs. NE. &amp; SW.</p> <p>78.00 Desc. prec. SE. slope.</p> <p>80.00 To cor. of Tps. 7 &amp; 8 N., Rs. 14 &amp; 15 E., as heretofore established and described.</p> <p>Land, mts. broken.          Soil, 3rd rate, very stony.          Timber, scattering oak, juniper, cedar.          Undergrowth, scrub oak, manzanita, thorn.          Mts. land, covered with dense undergrowth, and exceptionally difficult to survey, 80.00 chs.          June 15, 1910.</p>
---------	---

General Description.

The North Boundary of T. 7 N., R. 14 E., runs over a rough broken country, crossing the divide between Cherry creek and Spring Creek. The middle portion of the line passes through a fine grazing district, and heavy juniper and pine timber.

The land to the south of the line is so broken as to be almost worthless for any purpose.

There is no water along this line except in Cherry Creek.

June 15, 1910.

*James B. Wright*  
 U.S. Deputy Surveyor.



## Chains.

June 16, 1910.

At 7h a.m., l.m.t., at the cor. of Tps. 7 & 8 N., Rs. 14 & 15 E. as recently established by me and heretofore described,

I set off  $33^{\circ}59'$  N. on the lat. arc, and  $23^{\circ}21\frac{1}{2}'$  N. on the decl. arc and determine a true meridian with the solar.

Thence I run, as per instructions,

East, bet. secs. 6 & 31.

Over mts. land, asc. stony SW. slope, with great difficulty.

10.00 Top of mesa brs. NW. & SE., enter heavy juniper timber. Elev. 5000 ft., asc. grad. on mesa.

40.00 Set a sandstone  $15 \times 10 \times 6$  ins. 10 ins. in ground for  $\frac{1}{4}$  sec. cor. marked  $\frac{1}{4}$  on N. face, and raise a mound of stone 2 ft. base  $1\frac{1}{2}$  ft. high N. of cor., from which, An oak tree 8 ins. diam. brs. N.  $45^{\circ}$  E. 28 lks. dist., marked  $\frac{1}{4}$  S. 31 B.T.

An oak tree 10 ins. diam, brs. S.  $20^{\circ}$  W. 45 lks. dist., marked  $\frac{1}{4}$  S. 6 B.T.

50.00 Desc. steep.

55.00 Gulch 50 lks. wide, course SSW., asc. steep.

62.00 Top of spur, brs. S. & N., desc.

67.00 Canyon 80 lks. wide, 100 ft. deep, course SW., asc.

78.00 Head of canyon, course NNW. asc. steep.

80.00 On SW. rim of mesa, brs. SE. & NW., I

Set a sandstone  $24 \times 12 \times 8$  ins. 18 ins. in ground for cor. of secs. 5, 6, 31 & 32, marked with 1 notch on W. and 5 notches on E. edges, and raise a mound of stone 3 ft. base 2 ft. high W. of cor.

No bearings available. Pits impracticable.

Land, mts. broken.

Soil, stony, 3rd rate. Good grazing.

Timber, juniper, oak,

Undergrowth, scrub oak, few cacti.

Mts. land or land heavily timbered, exceptionally difficult to survey, 80.00 chs.

East, bet. secs. 5 & 32.

Over stony broken mesa, asc. grad., through dense oak and juniper, with great difficulty.

16.00 Top of low ridge, brs. N. & S., desc. grad.

36.00 Head of gulch, course NNE., descend.

40.00 Set a sandstone  $24 \times 12 \times 8$  ins. 18 ins. in ground for

$\frac{1}{4}$  sec. cor. marked  $\frac{1}{4}$  on N. face, from which,

An oak tree 10 ins. diam. brs. N.  $21\frac{1}{2}^{\circ}$  W. 13 lks. dist., marked  $\frac{1}{4}$  S. 32 B.T.

An oak tree 10 ins. diam. brs. S.  $74^{\circ}$  W. 44 lks. dist., marked  $\frac{1}{4}$  S. 5 B.T.

42.00 Top of mesa, brs. SE. & NW., desc. NE. slope.

57.00 Desc. prec.

62.00 Canyon, South fork of Wilson creek, 10 chs. wide, 200 ft. deep, course NW., asc. prec.

Water in this canyon  $\frac{1}{2}$  mile NW.

67.00 Top of N. rim of mesa, brs. NW. & SE.

80.00 Set a sandstone  $24 \times 14 \times 10$  ins. 18 ins. in ground for cor. of secs. 4, 5, 32 & 33, marked with 2 notches on W. and 4 notches on E. edges, and from which,

An oak tree 14 ins. diam. brs. S.  $9\frac{3}{4}^{\circ}$  W. 52 lks. dist., marked T. 7 N., R. 15 E. S. 5 B.T.

An oak tree 10 ins. diam. brs. N.  $80^{\circ}$  E. 52 lks. dist., marked T. 8 N. R. 15 E. S. 33 B.T.

An oak tree 10 ins. diam. brs. N.  $66\frac{1}{4}^{\circ}$  W. 139 lks. dist., marked T. 8 N., R. 15 E. S. 32 B.T.

A juniper tree 30 ins. diam. brs. S.  $10\frac{1}{4}^{\circ}$  E. 143 lks. dist. marked T. 7 N., R. 15 E. S. 4 B.T.

Chains.

Land, mts., broken.  
 Soil, 3rd rate, very stony.  
 Timber, juniper, oak,  
 Undergrowth, scrub oak, manzanita.  
 Mts. or broken land, heavily timbered or covered with  
 dense undergrowth, and exceptionally difficult to  
 survey, 80.00 chs.  
 At this cor. at 12m, 1.m.t., I set off 23°21' N. on the  
 decl. arc, and observe the sun on the meridian.  
 The resulting lat. is 33°59' N.

East, bet. secs. 4 & 33.  
 Over mts. land, asc. grad., through heavy oak and  
 juniper timber, with great difficulty.

- 26.75 Old road, from Ellisons ranch to Rock-house, brs.  
NW. & SE.
- 40.00 Set a quartzite stone 20x12x3 ins. 15 ins. in ground for  
1/4 sec. cor. marked 1/4 on N. face, from which,  
An oak tree 24 ins. diam. brs. S.25°W. 39 lks. dist.,  
marked 1/4 S. 4 B.T.  
An oak tree 8 ins. diam. brs. N.29°W. 122 lks. dist.,  
marked 1/4 S.33 B.T.
- 50.00 Top of flat divide, brs. N. & S., elev. 5500 ft.  
Desc. grad. through jungle of scrub oak, manzanita,  
and tesota.
- 80.00 Set a granite stone 20x12x3 ins. 15 ins. in ground for  
cor. of secs. 3,4,33 & 34, marked with 3 notches on E.&  
W. edges, and raise a mound of stone 3 ft. base 2 ft.  
high W. of cor.  
No bearings available. Pits impracticable.  
Land, mts. Soil, 2nd & 3rd rate, stony, gravelly.  
Timber, oak, juniper.  
Undergrowth, scrub oak, manzanita, tesota, thorn..  
Mts. land, covered with dense undergrowth and  
exceptionally difficult to survey, 80.00 chs.

East, bet. secs. 3 & 34.  
 Over rolling land, desc. grad., through jungle of manzanita  
 and scrub oak, with great difficulty:

- 32.20 Gulch 50 lks. wide, course SE.
- 34.00 same gulch, course ENE.
- 40.00 Set a granite stone 24x12x10 ins. 18 ins. in ground for  
1/4 sec. cor. marked 1/4 on N. face, from which,  
A juniper tree 6 ins. diam. brs. S.15°W. 26 lks. dist.,  
marked 1/4 S. 3 B.T.  
An oak tree 8 ins. diam. brs. N.2 1/2°W. 38 lks. dist.,  
marked 1/4 S. 34 B.T.
- 49.30 Gulch 80 lks. wide, course NE., asc.
- 71.32 Top of knoll, brs. E. & W., desc.
- 80.00 Set a granite stone 24x14x10 ins. 18 ins. in ground for  
cor. of secs. 2,3,34 & 35, marked with 4 notches on W.&  
2 notches on E. edges, and raise a mound of stone 2 ft.  
base 1 1/2 ft. high W. of cor.  
No bearings available. Pits impracticable.  
Land, mts.  
Soil, 3rd rate, stony, gravelly. good grazing.  
Timber, scattering juniper,  
Undergrowth, scrub oak, manzanita, thorn.  
Mts. land, covered with dense undergrowth, exceptionally  
difficult to survey, 80.00 chs.

Chains.

East, bet. secs. 2 & 35 .  
 Over mts. land, desc. through dense scrub oak, manzanita  
 and black brush, with great difficulty.  
 37.38 Intersect West Boundary of Fort Apache Indian Reservation.  
 Set a sandstone 24x15x10 ins. 18 ins. in ground for  
 closing cor. of Tps. 7 & 8 N., R. 15 E., marked  
 C.C. R. 15 E., on W.,  
 W.M.I.R. on E., with 6 grooves on N. & S. faces, and  
 raise a mound of stone 3 ft. base 2 ft. high W. of cor.,  
 from which,  
 A juniper tree 40 ins. diam. brs. S. 30° W. 243 lks. dist.,  
 marked T. 7 N., R. 15 E. S. 2 C.C.B.T.  
 An oak tree 8 ins. diam. brs. N. 65½° W. 70 lks. dist.,  
 marked T. 8 N., R. 15 E., S. 35 C.C.B.T.  
 The 22 mile cor. on West Boundary of Fort Apache Indian  
 Reservation, brs. South, 24.09 chs., dist., which is  
 a syenite stone 15x12x8 ins. above ground, marked and  
 witnessed as described by the Surveyor General.

June, 16, 1910.

General Description.

The North Boundary of T. 7 N., R. 15 E., runs over a broken mesa, covered with a good growth of native grass, with scattering clumps of heavy oak and juniper timber.

June 16, 1910.

*James B. Wright*  
 U.S. Deputy Surveyor.

## East Boundary of T. 8 N., R. 14 E.

## Chains.

- June 17, 1910.  
At 7h a.m., l.m.t., at the cor. of Tps. 7 & 8 N., Rs. 14 & 15 E., recently established by me and heretofore described, I set off  $33^{\circ}59'$  N. on the lat. arc, and  $23^{\circ}23\frac{1}{2}'$  N. on the decl. arc, and determine a true meridian with the solar; thence I run, as per instructions, North, on East Bdy. T. 8 N., R. 14 E., bet. secs. 31 & 36. Over mts. land, asc. steep, through heavy juniper, and dense scrub oak, with great difficulty.
- 3.00 Top of mesa, brs. E. & W.  
16.00 North edge of mesa, brs. NE. & SW., desc. steep through dense manzanita and scrub oak. Leave juniper timber.  
34.49 S. Rim of Wilson creek canyon, brs. W. & E. desc. abrupt, 200 ft., into Wilson creek.  
37.00 Wilson creek, (dry), 3 chs. wide, course W., asc. prec.  
40.00 Top of N. rim of Canyon, brs. E. & W.  
Set a sandstone  $20 \times 10 \times 10$  ins., in mound of stone on bed-rock, for  $\frac{1}{4}$  sec. cor., marked  $\frac{1}{4}$  on W. face, and raise a mound of stone 3 ft. base 2 ft. high W. of cor.  
No bearings available. Pits impracticable.  
Asc. steep from cor.  
51.00 Top of ridge, brs. SW. & NE.,  
56.00 Desc. prec. N. slope.  
59.00 Gulch 30 lks. wide, course WSW., asc. steep.  
61.95 Top of spur, brs. SW. & NE., desc.  
65.00 Canyon 150 lks. wide, 100 ft. deep, course SW., asc. steep.  
80.00 Set a limestone  $24 \times 14 \times 10$  ins. 18 ins. in ground for cor. of secs. 25, 30, 31 & 36, marked with 1 notch on S. & 5 notches on N. edges, and raise a mound of stone 2 ft. base  $1\frac{1}{2}$  ft. high W. of cor., from which,  
A cedar tree 18 ins. diam. brs. N.  $40^{\circ}$  E. 23 lks. dist., marked T. 8 N., R. 15 E. S. 30 B.T.  
No other bearings available. Pits impracticable.  
Land, mts. Soil, 3rd rate, stony.  
Timber, scattering juniper, and oak.  
Undergrowth, scrub oak, manzanita.  
Mts. land, covered with dense undergrowth, exceptionally difficult to survey, 80.00 chs.
- 
- North, bet. secs. 25 & 30.  
Over mts. land, asc. through dense scrub oak, with great difficulty.
- 3.00 Top of mesa, brs. NE. & SW.  
12.10 N. rim of mesa, brs. E. & W., desc. prec.  
23.00 Canyon 80 lks. wide, 150 ft. deep, course W.S.W. asc. prec.  
35.10 Top of steep S. slope, asc. grad. SW. slope.  
40.00 Set a sandstone  $24 \times 12 \times 8$  ins. 18 ins. in ground for  $\frac{1}{4}$  sec. cor., marked  $\frac{1}{4}$  on W. face, from which,  
A juniper tree 12 ins. diam. brs. N.  $30^{\circ}$  E. 125 lks. dist., marked  $\frac{1}{4}$  S. 30 B.T.  
A juniper tree 6 ins. diam. brs. N.  $20^{\circ}$  W. 32 lks. dist., marked  $\frac{1}{4}$  S. 25 B.T.  
46.00 Top of high spur, brs. W. & E., desc. NW. slope.  
52.00 Desc. steep N. slope.  
60.00 Desc. steep, broken NE. slope.  
65.00 East side of high pt., brs. N. & S., Desc. prec. N. slope.  
80.00 Set a limestone  $24 \times 12 \times 8$  ins. 18 ins. in ground for cor. of secs. 19, 24, 25 & 30, marked with 2 notches on S. & 4 notches on N. edges, from which, a juniper 18 ins. in diam., brs. NE  $16$  lks. dist., mkd. T8N15E S19BT.; raise a mound of stone 2 ft. base,  $1\frac{1}{2}$  ft. high, W. of cor.  
Land, mts. Soil, 3rd & 4th rate, stony.  
Timber scattering juniper & oak. Undergrowth, scrub oak.  
Mts. land, exceptionally difficult to survey, 80.00 chs.  
At this cor. at 12m, l.m.t, I set off  $23^{\circ}23'$  N. on the decl. arc, and observe the sun on the meridian.  
The resulting lat. is  $34^{\circ}1'$  N.

Chains.	
	North, bet. secs. 19 & 24. Over mts. land, desc. steep N. slope, through dense pinon and manzanita, with great difficulty.
5.00	Canyon 2 chs. wide, 100 ft. deep, course W., asc.
9.50	Point of spur, brs. W. & E., desc. NW. slope.
15.50	Walnut creek, (dry) 150 lks. wide, course SW., asc. broken SE. slope, through dense scrub oak and thorn.
40.00	Set a limestone 20x10x10 ins. 15 ins. in ground for $\frac{1}{4}$ sec. cor., marked $\frac{1}{4}$ on W. face, from which, A pine tree 10 ins. diam. brs. S. 43° E. 44 lks. dist., marked $\frac{1}{4}$ S. 19 B.T. A pine tree 10 ins. diam. brs. N. 71° W. 110 lks. dist., marked $\frac{1}{4}$ S. 24 B.T.
80.00	Set a sandstone 24x15x8 ins. 10 ins. in ground on bed-rock, in mound of stone for cor. of secs. 13, 13, 19 & 24, marked with 3 notches on N. & S. edges, and raise a mound of stone 4 ft. base 3 ft. high W. of cor. No bearings available. Pits impracticable. Elev. 5000 ft. Land, mts. Soil, 3rd rate, stony. Timber, scattering oak, pine, juniper. Undergrowth, pinon, scrub oak, manzanita, thorn. Mts. land covered with dense undergrowth, exceptionally difficult to survey, 80.00 chs.
	North, bet. secs. 13 & 18. Over mts. land, asc. stony S. slope, with great difficulty.
10.00	Asc. prec. SE. slope.
22.00	Top of bluff, brs. NE. & SW.
30.00	Desc. NW. slope.
36.00	Canyon, 50 lks. wide, course E.N.E., asc.
40.00	Set a sandstone 30x14x12 ins. 10 ins. in ground, on bed-rock, in mound of stone for $\frac{1}{4}$ sec. cor., marked $\frac{1}{4}$ on W. face, and raise a mound of stone 4 ft. base 4 ft. high W. of cor. No bearings available. Pits imprac.
56.00	Top of spur, brs. SE. & NW., desc. NE. slope.
63.00	Canyon 150 lks. wide, course E., asc.
70.00	Top of mesa, brs. E. & W., enter heavy oak, pine, and juniper.
80.00	Set a sandstone 20x14x10 ins. 15 ins. in ground for cor. of secs. 7, 12, 13 & 18, marked with 4 notches on S. & 2 notches on N. edges, and raise a mound of stone 3 ft. base 2 ft. high W. of cor., from which, An oak tree 18 ins. diam. brs. N. 43° E. 79 lks. dist., marked T. 8 N., R. 15 E. S. 7 B.T. An oak tree 10 ins. diam. brs. S. 33° E. 60 lks. dist., marked T. 8 N., R. 15 E. S. 18 B.T. An oak tree 10 ins. diam. brs. S. 77 $\frac{1}{2}$ ° W. 40 lks. dist., marked T. 8 N., R. 14 E. S. 13 B.T. A pine tree 14 ins. diam. brs. N. 53° W. 104 lks. dist., marked T. 8 N., R. 14 E. S. 12 B.T. Land, mts., broken. Soil, 3rd & 4th rate, stony. Timber, pine, oak, juniper. Undergrowth, scattering scrub oak. Fine grazing on mesa. Mts. land or land, heavily timbered, and exceptionally difficult to survey, 80.00 chs. June 17, 1910.

Chains June 13, 1910.  
 At 7h a.m., l.m.t., at the cor. of secs. 7, 12, 13 & 18,  
 I set off  $34^{\circ} 2\frac{1}{2}'$  N. on the lat. arc, and  $23^{\circ} 25\frac{1}{2}'$  N. on  
 the decl. arc., and determine a true meridian with the  
 solar.  
 Thence, I run,  
 North, bet. secs. 7 & 12.  
 Over mts. land, desc. along broken East edge, of mesa,  
 through dense scrub pine and juniper,  
 with great difficulty.  
 4.50 Canyon 150 lks. wide, course E., asc. steep.  
 28.08 Trail, Ellisons to Young, brs. NW. & SE.,  
 40.00 Set a sandstone  $24 \times 12 \times 8$  ins. 18 ins. in ground for  
 $\frac{1}{4}$  sec. cor. marked  $\frac{1}{4}$  on W. face, and from which,  
 An oak tree 8 ins. diam brs. N.  $47^{\circ}$  E. 12 lks. dist.,  
 marked  $\frac{1}{4}$  S. 7 B.T.  
 An oak tree 10 ins. diam. brs. S.  $42^{\circ}$  W. 46 lks. dist.,  
 marked  $\frac{1}{4}$  S. 12 B.T.  
 50.00 Top of high dividing ridge, brs. NE. & SW., Top of  
 Catholic peak on same, ridge, brs. NE.,  $\frac{1}{4}$  mile.  
 Desc. steep, broken N., slope, through dense scrub oak.  
 60.00 Head of Canyon, brs. NNW., thence along very stony W.  
 slope of Catholic peak, over loose shale.  
 80.00 Set a quartzite stone  $24 \times 12 \times 8$  ins. 18 ins. in ground for  
 cor. of secs. 1, 6, 7 & 12, marked with 5 notches on  
 S. & 1 notch on N. edges, and raise a mound of stone,  
 3 ft. base  $1\frac{1}{2}$  ft. high W. of cor.  
 No bearings available. Pits impracticable.  
 Land, mts., broken. Soil, 3rd & 4th rate, very stony.  
 Timber, pine, oak, juniper. Undergrowth, scrub oak, pine.  
 Mts. land, or land heavily timbered or covered with  
 dense undergrowth, and exceptionally difficult to  
 survey, 80.00 chs.  
 At this cor. at 12, m, l.m.t., I set off  $23^{\circ} 25'$  N. on the  
 decl. arc, and observe the sun on the meridian.  
 The resulting lat. is  $34^{\circ} 3'$  N.

North, bet. secs. 1 & 6.  
 Over mts. land, desc. steep, broken NW. slope, through  
 dense scrub oak and thorn, with great difficulty.  
 20.00 Canyon 150 lks. wide, 100 ft. deep, course W. asc. grad.  
 40.00 Set a sandstone  $24 \times 15 \times 10$  ins. 18 ins. in ground for  
 $\frac{1}{4}$  sec. cor., marked  $\frac{1}{4}$  on W. face, and raise a mound of  
 stone 2 ft. base  $1\frac{1}{2}$  ft. high W. of cor.  
 No bearings available. Pits impracticable.  
 60.00 Asc. steep S. slope.  
 72.00 Top of mesa, brs. E. & W.  
 79.35 Intersect 2nd Standard Parallel North,  
 Set a sandstone  $24 \times 12 \times 8$  ins. 18 ins. in ground for  
 Closing cor. of Tps. 8 N., Rs. 14 & 15 E., marked  
 C.C., T. 8 N., on S., with 6 grooves on E. & W. & S.  
 faces, and raise a mound of stone 3 ft. base 2 ft.  
 high S. of cor.  
 No trees available. Pits impracticable.  
 Standard cor. of Tps. 9 N., Rs. 14 & 15 E., brs.  
 East, 26.90 chs., which is a sandstone  $8 \times 8 \times 8$  ins.  
 above ground, marked and witnessed as described by the  
 Surveyor General.  
 Land, mts. Soil, 3rd rate, stony.  
 Timber, scattering oak, juniper.  
 Undergrowth, scrub oak, pinon, thorn.  
 Mts. land covered with dense undergrowth, exceptionally  
 difficult to survey, 79.35 chs. June 13, 1910.

## General Description.

The East Boundary of T. 8 N., R. 14 E. runs over a very  
 rough broken country, mostly dry, stony and barren, with  
 clumps of juniper, oak, and pine timber. Good grazing  
 on the narrow mesas. No water on this line.  
 June 13, 1910.

*Jose B. Whight*  
 U.S. Deputy Surveyor

## Chains.

June 19, 1910.

At 8h a.m., l.m.t., at the cor. of Tps. 9 & 10 N., Rs. 14 & 15 E., which is a sandstone 10x8x3 ins. above ground, marked and witnessed as described by the Surveyor General,

I set off  $34^{\circ}9\frac{1}{2}'$  N. on the lat. arc, and  $23^{\circ}26\frac{1}{2}'$  N. on the decl. arc, and determine a true meridian with the solar. Thence I run, as per instructions.

East, on N. Bdy. T. 9 N., R. 15 E., bet. secs. 6 & 31.

Over mts. land, asc. grad. SSW. slope, through scattering heavy pine, and dense scrub oak and juniper, with great difficulty.

40.00 Set a sandstone 24x12x6 ins. 18 ins. in ground, as per instructions, for  $\frac{1}{4}$  sec. cor. marked  $\frac{1}{4}$  on N. face, and raise a mound of stone 2 ft. base  $1\frac{1}{2}$  ft. high N. of cor. from which,

A juniper tree 24 ins. diam. brs. S.  $48^{\circ}$  E., 37 lks. dist., marked  $\frac{1}{4}$  S. 6 B.T.

A pine 30 ins. diam. brs. N.  $20^{\circ}$  W. 152 lks. dist., marked  $\frac{1}{4}$  S. 31 B.T.

75.00 Gulch 50 lks. wide, course SSW.

80.00 Set a syenite stone 24x12x3 ins. 18 ins. in ground for cor. of secs. 5, 6, 31 & 32, marked with 1 notch on W. and 5 notches on E. edges, and raise a mound of stone 2 ft. base  $1\frac{1}{2}$  ft. high W. of cor., from which,

A pine tree 24 ins. diam. brs. N.  $38^{\circ}$  E. 133 lks. dist., marked T. 10 N., R. 15 E. S. 32 B.T.

A pine tree 36 ins. diam. brs. S.  $45\frac{1}{2}^{\circ}$  E. 114 lks. dist., marked T. 9 N., R. 15 E. S. 5 B.T.

A pine tree 36 ins. diam. brs. S.  $49\frac{1}{2}^{\circ}$  W. 158 lks. dist., marked T. 9 N., R. 15 E. S. 6 B.T.

A pine tree 30 ins. diam. brs. N.  $64^{\circ}$  W. 93 lks. dist., marked T. 10 N., R. 15 E. S. 31 B.T.

Land, mts., soil, 2nd rate, gravelly.

Timber, pine, oak, juniper.

Undergrowth, scrub oak, pine.

Mts. land, heavily timbered or covered with dense undergrowth, exceptionally difficult to survey, 80.00 chs.

East, bet. secs. 5 & 32.

Over mts. land desc. grad. along S. slope, through dense pine, and scrub pine and oak, with great difficulty.

8.00 Desc. steep, SE. slope.

13.00 Canyon, 2 chs. wide, 150 ft. deep, course SSW., asc. prec.

19.00 Top of NW. point, desc.

25.00 Gulch 30 lks. wide, course NW., asc.

40.00 Set a sandstone 20x15x12 ins. 15 ins. in ground for  $\frac{1}{4}$  sec. cor. marked  $\frac{1}{4}$  on N. face, and raise a mound of stone 3 ft. base 2 ft. high N. of cor., from which, An oak tree 24 ins. diam. brs. S.  $45^{\circ}$  E. 42 lks. dist., marked  $\frac{1}{4}$  S. 5 B.T.

A pine tree 14 ins. diam. brs. N.  $65^{\circ}$  W. 71 lks. dist., marked  $\frac{1}{4}$  S. 32 B.T.

60.00 Top of flat, spur, brs. N. & S., desc. grad. along NE. slope.

73.00 Gulch 50 lks. wide, course NW., asc.

80.00 Set a sandstone 24x12x6 ins. 18 ins. in ground for cor. of secs. 4, 5, 32 & 33, marked with 2 notches on W., and 4 notches on E. edges, and from which,

A pine tree 24 ins. diam. brs. N.  $30^{\circ}$  E. 133 lks. dist., marked T. 10 N., R. 15 E. S. 33 B.T.

A pine tree 18 ins. diam. brs. S.  $30^{\circ}$  E. 39 lks. dist., marked T. 9 N., R. 15 E. S. 4 B.T.

Chains.

A pine tree 20 ins.diam. brs. S.59½°W. 102 lks.dist.,  
marked T. 9 N.,R. 15 E. S. 5 B.T.

A pine tree 36 ins.diam. brs.N.34°W. 78 lks. dist.,  
marked T. 10 N.,R. 15 E. S. 32 B.T.

Land, mts. Soil, 2nd & 3rd rate, stony, gravelly.

Timber, heavy pine, oak, juniper.

Undergrowth, scrub pine, oak.

Mts. land heavily timbered or covered with dense under-  
growth,exceptionally difficult to survey,30.00 chs.

At this cor. at 12h 1m p.m.,l.m.t., I set off 23°26' N.  
on the decl. arc, and observe the sun on the meridian.

The resulting lat. is 34°10' N.

East, bet. secs. 4 & 33.

Over mts. land asc. grad. along gentle N. slope,  
through dense pine and oak, timber,  
with great difficulty.

21.15 Pine tree 36 ins.diam. on line.

27.15 Road,Holbrook to Young, brs. NE. & SW.

30.00 Desc. NE. slope.

33.67 Road, brs. NW. & SE.,

40.00 Set a sandstone 24x12x6 ins. 18 ins. in ground for  
¼ sec. cor. marked ¼ on N. face, and raise a mound of  
stone 2 ft. base 1½ ft. high N.of cor. from which,  
A pine tree 36 ins.diam. brs. S. 20½°E. 61 lks. dist.,  
marked ¼ S. 4 B.T.  
A pine tree 36 ins.diam. brs. N.60°W. 61 lks.dist.,  
marked ¼ S. 33 B.T.

48.30 Draw, 80 lks. wide, course NW., asc.

56.00 Road, brs. ENE. & WSW.

76.28 Road, top of ridge, brs. N. & S., desc.

80.00 Set a sandstone 24x12x3 ins. 18 ins. in ground for  
cor.of secs. 3,4,33 & 34, marked with 3 notches on E. &  
W. edges, and raise a mound of stone 2 ft. base 1½ ft.  
high W. of cor., from which,

A pine tree 40 ins.diam.br. N.78½°E. 174 lks.dist.,  
marked T. 10 N.,R. 15 E. S. 34 B.T.

A pine tree 36 ins.diam.br. S.25°E. 63 lks. dist.,  
marked T. 9 N.,R. 15 E. S. 3 B.T.

A pine tree 30 ins.diam.br. S.78°W. 50 lks.dist.,  
marked T. 9 N.,R. 15 E. S. 4 B.T.

A pine tree 40 ins.diam. brs. N.72½°W. 80 lks.dist.,  
marked T. 10 N.,R. 15 E. S. 33 B.T.

Land, mts.

Soil, 2nd & 3rd rate, gravelly, stony.

Timber, pine, oak, juniper.

Undergrowth, scrub oak and pine.

Mts. land,heavily timbered , and exceptionally difficult  
to survey, 80.00 chs.

June 19,1910.



## North Boundary of T. 9 N., R. 15 E.

39

Chains June 20, 1910.

At 7h a.m., l.m.t., at the cor. of secs. 3, 4, 33 & 34,  
I set off  $34^{\circ} 10'$  N on the lat. arc, and  $23^{\circ} 27\frac{1}{2}'$  N on  
the decl. arc, and determine a true meridian with the solar,  
Thence I run,  
East, bet. secs. 3 & 34.  
Over mts. land, desc. steep, through heavy pine, oak,  
and juniper, with great difficulty.

4.00 Gulch 50 lks. wide, course SE., near head. asc.  
12.00 Top of apt. of spur, brs. N. & S., desc. SE. slope.  
33.50 Gulch 50 lks. wide, course SSE., asc.  
39.00 Pt. of spur, brs. SW. & NE., desc.  
40.00 Set a sandstone  $24 \times 15 \times 10$  ins. 18 ins. in ground for  
 $\frac{1}{4}$  sec. cor. marked  $\frac{1}{4}$  on N. face, and raise a mound of  
stone 2 ft. base  $1\frac{1}{2}$  ft. high N. of cor., from which,  
A pine tree 8 ins. diam. brs. N.  $16^{\circ}$  E. 29 lks. dist.,  
marked  $\frac{1}{4}$  S. 34 B.T.  
An oak tree 14 ins. diam. brs. S.  $30^{\circ}$  W. 21 lks. dist.,  
marked  $\frac{1}{4}$  S. 3 B.T.

47.00 Gulch 40 lks. wide, course SW., asc.  
55.00 Top of rocky spur, brs. SE. & NW., desc. steep.  
67.00 Gulch 50 lks. wide, course SSE., asc.  
75.00 Top of spur, brs. S. & N., desc.  
80.00 Mark a juniper tree 48 ins. diam. for cor. of secs. 2, 3  
& 34 & 35, blazed on four faces, and marked,  
T. 10 N., S. 35 on NE.,  
R. 15 E., S. 2 on SE.,  
T. 9 N., S. 3, on SW., and  
R. 15 E., S. 34 on NW., faces, with 4 notches on W. and  
2 notches on E. edges, from which,  
A juniper tree 30 ins. diam. brs. N.  $30^{\circ}$  E. 131 lks. dist.,  
marked T. 10 N., R. 15 E. S. 35 B.T.  
An oak tree 10 ins. diam. brs. S.  $80^{\circ}$  E. 134 lks. dist.,  
marked T. 9 N., R. 15 E. S. 2 B.T.  
An oak tree 8 ins. diam. brs. S.  $3^{\circ}$  W. 42 lks. dist.,  
marked T. 9 N., R. 15 E. S. 3 B.T.  
A pine tree 20 ins. diam. brs. N.  $59^{\circ}$  W. 164 lks. dist.,  
marked T. 10 N., R. 15 E. S. 34 B.T.

Land, mts. Soil, 3rd rate, stony.  
Timber, Pine, juniper, oak. Undergrowth, scrub oak, pine.  
Mts. land, heavily timbered, exceptionally difficult to  
survey, 80.00 chs.

---

East, bet. secs. 2 & 35.  
Over mts. land desc. steep NE. slope, through heavy  
pine, oak, and juniper, with great difficulty.

11.14 Intersect West Boundary of Fort Apache Indian Reservation.  
Set a limestone  $24 \times 15 \times 12$  ins., 18 ins. in ground for  
closing cor. of Tps. 9 & 10 N., R. 15 E., marked  
C.C., R. 15 E., on W., and  
W.M.I.R. on E. faces, with 6 grooves, on N. & S.  
faces, and raise a mound of stone 4 ft. base 3 ft.  
high W. of cor., from which,  
An oak tree 14 ins. diam. brs. S.  $13^{\circ}$  W. 47 lks. dist.,  
marked T. 9 N., R. 15 E. S. 2 C.C.B.T.  
A juniper tree 20 ins. diam. brs. N.  $32^{\circ}$  W. 128 lks. dist.,  
marked T. 10 N., R. 15 E. S. 35 C.C.B.T.

The  $9\frac{1}{2}$  mile cor. on West Boundary of Fort Apache Indian  
Reservation, brs. North, 16.55 chs. dist., which is a  
sandstone  $14 \times 10 \times 8$  ins. above ground, marked and witnessed  
as described by the surveyor General.  
The 10 mile cor. on said Boundary, brs. South, 23.50 chs.  
dist., which is a sandstone  $13 \times 12 \times 8$  ins. above ground,  
marked and witnessed as described by the Surveyor  
General.

At this closing cor. at 12h l.m., p.m., l.m.t., I set off  
 $23^{\circ} 27'$  N on the decl. arc, and observe the sun on the  
meridian. The resulting lat. is  $34^{\circ} 10'$  N.

Land, mts. Soil, 3rd rate, stony.  
Timber, heavy pine, oak, and juniper.  
Undergrowth, scrub oak, and pine.  
Mts. land, heavily timbered, exceptionally difficult to  
Survey, 11.14 chs.

General Description.

The North Boundary of T. 9 N., R. 15 E., runs over a broken mesa, heavily timbered with pine, oak, and juniper. The general elevation of this mesa, being, 6500 ft. There is some good agricultural land along the broad draws, the soil throughout, being covered with a fine growth of native grass. There is no Water on this line.

June 20, 1910.

*Jose B. Wright*  
U.S. Deputy Surveyor.

Notation.

During the survey of the boundaries of Tps. 7 & 8 N., Rs. 13, 14 & 15, E., and T. 9 N., R. 15 E., in accordance with instructions, I find and ~~destroy~~ all the corners as established on or near the lines which were established under former contracts Nos. 119, and 147, Arizona. These corners were in many cases very difficult to locate, as the former line varied greatly, both in measurement and alinement, and the location and destruction of these erroneous corners occasioned the loss of much time and great expense.

*Jose B. Wright*  
U.S. Deputy Surveyor.

*For authority for red ink corrections see deputy's letter 9/2/10*

Boundaries of Tps. 7 & 8 N., R. 13 E.  
 Latitudes, departures, and closing errors.

Line designated.	True Bearing.	Distance. Chs.	Latitudes.		Departures.	
			N. Chs.	S. Chs.	E. Chs.	W. Chs.
S.Bdy.T.7 N.R.13 E.	West, .....	479.02	.....	.....	.....	479.02
3rd Gd. Meridian E.	North, ....	958.20	958.20	.....	.....	.....
2nd Standard Par.N.	East, ....	477.62	.....	.....	477.62	.....
E.Bdy.T.8 N.R.13 E.	South, ....	479.40	.....	479.40	.....	.....
E.Bdy.T.7 N.R.13 E.	South, ...	480.00	.....	480.00	.....	.....
Convergency. . . . .	.....	.....	.....	.....	.....98	.....
Totals, ...			958.20	959.40 958.20	478.60	479.02 478.50
Error in Lat., ...			.....	1.20	Error Dep., ...	.42

*James B. Wright*  
 U.S. Deputy Surveyor.

Boundaries of T. 7 N., R. 14 E.  
Latitudes, departures, and closing errors.

Line designated,	True bearing.	Distance.	Latitudes.		Departures.	
			N.	S.	E.	W.
		Chs.	Chs.	Chs.	Chs.	Chs.
S.Bdy.T.7 N.R.14 E.	West, .....	479.02	.....	.....	.....	479.02
W.Bdy.T.7 N.R.14 E.	North, .....	480.00	480.00	.....	.....	.....
N.Bdy.T.7 N.R.14 E.	S.89°58'E.,	478.40	.....	.30	478.40	.....
E.Bdy.T.7 N.R.14 E.	South, .....	480.00	.....	480.00	.....	.....
Convergency., .....	.....	.....	.....	.....	.49	.....
Totals, ...		.....	480.00	480.30	478.89	479.02
			.....	480.00	.....	478.89
Error in Lat., .....				.30	Error Dep.,	.13

  
 U.S. Deputy Surveyor.

Boundaries of T. 8 N., R. 15 E.  
Latitudes, departures, and closing errors.

Line designated.	True bearing.	Distance.	Latitudes.		Departures.	
			N.	S.	E.	W.
S. Bdy. T. 8 N. R. 15 E.	West, .....	357.38	.....	.....	.....	357.38
W. Bdy. T. 8 N. R. 15 E.	North, .....	479.35	479.35	.....	.....	.....
2nd Standard Par. N. West Bdy. of White Mtn. Indian Res'n.)	East, .....	358.00	.....	.....	358.00	.....
	South, .....	480.27	.....	480.27	.....	.....
Convergency, .....	.....	.....	.....	.....	.38	.....
		Totals, ..	479.35	480.27 479.35	358.38 357.38	357.38
		Error in Lat., ...		.92	1.00	
		Error in Dep., .....			1.00	

*Jesse B. Wright*  
U.S. Deputy Surveyor.

Boundaries of T. 8 N., R. 14 E.  
Latitudes, departures, and closing errors.

Line designated.	True bearing.	Distance.	Latitudes.		Departures.	
			N.	S.	E.	W.
		Chs.	Chs.	Chs.	Chs.	Chs.
S.Bdy.T.8 N.R.14 E.	N. 89°58' W.	478.40	.30	.....	.....	478.40
W.Bdy.T.8 N.R.14 E.	North, .....	479.40	479.40	.....	.....	.....
2nd Standard Par.N.	East, .....	477.55	.....	.....	477.55	.....
E.Bdy.T.8 N.R.14 E.	South,.....	479.35	.....	479.35	.....	.....
Convergency, .....	.....	.....	.....	.....	..... .49	.....
Totals, .....			479.70	479.35	478.04	478.40
			479.35			478.04
Error in Lat., .....			.35	Error in dep., ..		.36

*Jesse B. Wright*  
U.S. Deputy Surveyor.

Boundaries of T. 7 N., R. 15 E.  
Latitudes, departures, and closing errors.

Line designated.	True bearing.	Distance.	Latitudes.		Departures.	
			N.	S.	E.	W.
		Chs.	Chs.	Chs.	Chs.	Chs.
S.Bdy.T.7 N.R.15 E.	West, .....	358.60	.....	.....	.....	358.60
W.Bdy.T.7 N.R.15 E.	North, .....	480.00	480.00	.....	.....	.....
N.Bdy.T.7 N.R.15 E.	East, .....	357.38	.....	.....	357.38	.....
West Bdy.of White Mtn.Indian Res'n.)	South, .....	479.89	.....	479.89	.....	.....
Convergency, .....	.....	.....	.....	.....	.38	.....
	Totals, .....	.....	480.00 479.89	479.89 .....	357.76 .....	358.60 358.76
	Error in lat. ....	.....	.11	Error in dep.,	---	.84

*Jesse B. Wright*  
U.S. Deputy Surveyor.

Boundaries of T. 9 N., R. 15 E.  
Latitudes, departures, and closing errors.

Line designated.	True bearing.	Distance.	Latitudes.		Departures.	
			N.	S.	E.	W.
		Chs.	Chs.	Chs.	Chs.	Chs.
S.Bdy.T.9 N.R.15 E.	West, .....	331.10	.....	.....	.....	331.10.
W.Bdy.T.9 N.R.15 E.	North, .....	480.00	480.00	.....	.....	.....
N.Bdy.T.9 N.R.15 E.	East, .....	331.14	.....	.....	331.14	.....
West Bdy. of White Mtn. Indian Res'n. Convergency, .....	South, .....	479.09	.....	479.09	.....	.....
	.....	.....	.....	.....	.38	.....
		Totals, ..	480.00	479.09	331.52	331.10
			479.09	.....	331.10	.....
		Error in Lat. .91	Error in Dep. 42	.....	.....	.....

*Jesse B. Wright*  
U.S. Deputy Surveyor.



LIST OF NAMES.

A list of the names of the individuals employed by Jesse B. Wright,

....., United States Deputy Surveyor, to assist in running, measuring, and marking the lines and corners described in the foregoing field notes of the survey of .....

Boundaries of Tps. 7, 8 & 9 N., Rs. 13, 14 & 15 E.

showing the respective capacities in which they acted:

James M. Barney, ..... *Chainman.*

Edgar M. Darnall, ..... *Chainman.*

Chas. E. Bean, ..... *Moundman.*

..... *Moundman.*

Jose N. Lopez, ..... *Arman.*

Ben. J. Kinsey, ..... *Arman.*

Francisco Guitierrez, ..... *Flagman.*

FINAL OATH OF ASSISTANTS.

We hereby certify that we assisted Jesse B. Wright,

....., United States Deputy Surveyor, in surveying all those parts or portions of the .....

Boundaries of Tps. 7, 8 & 9 N., Rs. 13, 14 & 15 E.

..... of the Gila &

Salt River Base & meridian, Territory of Arizona, ....., which are represented

in the foregoing field notes as having been surveyed by him and under his direction; and that said survey has been in all respects, to the best of our knowledge and belief, well and faithfully surveyed, and the corner monuments established, according to the instructions furnished by the United States Surveyor

General for Arizona.

James M. Barney ..... *Chainman.*

Edgar M. Darnall ..... *Chainman.*

Chas. E. Bean ..... *Moundman.*

..... *Moundman.*

Jose N. Lopez ..... *Arman.*

Ben. J. Kinsey ..... *Arman.*

Francisco Guitierrez ..... *Flagman.*

Subscribed and sworn to before me this Fifth }  
day of August ..... 1900



J. G. Evans

Notary Public

Roosevelt, Arizona

My commission expires Jan 15 1913.

179  
48  
BOOK 2248

FINAL OATH OF UNITED STATES DEPUTY SURVEYOR.

I, Jesse B. Wright, United States Deputy Surveyor, do solemnly swear that, in pursuance of a contract received from Frank S. Ingalls, United States Surveyor General for Arizona, bearing date of the Second day of October, 1909, I have well, faithfully, and truly, in my own proper person, and in strict conformity with the instructions furnished by the United States Surveyor General for Arizona, the Manual of Surveying Instructions, and the laws of the United States, surveyed all those parts or portions of

Boundaries of Tps. 7, 8 & 9 N., Rs. 13, & 14 & 15 E.

of the Gila & Salt-  
river Base & meridian, in the Territory of Arizona, which are represented in the foregoing field notes as having been surveyed by me, and under my direction; and I do further solemnly swear that all the corners of said survey have been established and perpetuated in strict accordance with the Manual of Surveying Instructions, and the special written instructions of the United States Surveyor General for Arizona and in the specific manner described in the field notes, and that the foregoing are the original field notes of such survey.

*Jesse B. Wright*  
United States Deputy Surveyor.

Subscribed by said Jesse B. Wright, and sworn to before me  
this 12<sup>th</sup> day of August, 1910

*W. H. ...*  
*W. H. ...*



APPROVAL.

OFFICE OF THE UNITED STATES SURVEYOR GENERAL,

*Phoenix, Ariz. May 26 - 1911 - 190*

The foregoing field notes of the survey of the South boundary of Tps. 7 & 8 N., R. 13 E., the South and West boundaries of Tps. 7 and 8 N., R. 14 and 15 E., and the North boundary of Tps. 7 & 8 N., R. 15 E., all of the Gila and Salt River Base and Meridian, Arizona.

executed by Jesse B. Wright U.S. Deputy Surveyor under his contract No. 160, dated October 2, 1909, having been critically examined, and the necessary corrections and explanations made, the said field notes, and the surveys they describe, are hereby approved.

*Frank S. Ingalls*  
United States Surveyor General.

I certify that the foregoing transcript of the field notes of the above-described surveys in \_\_\_\_\_, has been correctly copied from the original notes on file in this office.

United States Surveyor General.