

MAR 28 1910

See letter
A-626-1912

BOOK 2364

FIELD NOTES

OF THE SURVEY OF THE

SEGREGATION SURVEY

of

UNITED STATES No. 6 Mining Claim,

in conflict with

HOMESTEAD ENTRY No. 4833,

the NW 1/4 of the SE 1/4 of Section 26, T. 1 N., R. 15 E.,

Of the Gila and Salt River Meridian,

Arizona

AS SURVEYED BY

Howard C. Hopkins, ^{Mineral} United States ~~Surveyor~~ Surveyor,

Order Issued ~~Under his Contract No.~~, dated January 11, 1910., 190

Survey commenced January 29, 1910., 190

Survey completed March 14, 1910., 190

10 222

NAMES AND DUTIES OF ASSISTANTS.

H. L. May - Chairman

S. G. Hart - "

S. G. Hart - Woundman.

BOOK 2364

INDEX DIAGRAM.

Township *N.*, Range *15 E.*

6	5	4	3	2	1
7	8	9	10	11	12
18	17	16	15	14	13
19	20	21	22	23	24
30	29	28	27	26	25
31	32	33	34	35	36

Meanders Page _____

PRELIMINARY OATHS OF ASSISTANTS.

WE, H. L. Way and S. C. Hart

do solemnly swear that we will well and faithfully execute the duties of chainmen; that we will level the chain upon even and uneven ground, and plumb the tally pins, either by sticking or dropping the same; that we will report the true distances to all notable objects, and the true lengths of all lines that we assist in measuring, to the best of our skill and ability, and in accordance with instructions given us, in the survey of

U.S. No. 6 Mining Claim in conflict with Homestead Entry No. 4883, the N.W. 1/4 of S.E. 1/4, Sec. 26, T. 1 N., R. 15 E., G. & S. R. Mer. Arizona.

H. L. Way, Chainman.
S. C. Hart, Chainman.

Subscribed and sworn to before me this 29 day of January, 1910



Norman J. Johnson
Notary Public.
My commission expires April 26-1913.

WE, S. C. Hart and

do solemnly swear that we will well and truly perform the duties of moundmen in the establishment of corners, according to the instructions given us, to the best of our skill and ability, in the survey of

U.S. No. 6 Mining Claim, in conflict with Homestead Entry No. 4883, the N.W. 1/4 of S.E. 1/4, Sec. 26, T. 1 N., R. 15 E., G. & S. R. Mer. Arizona.

S. C. Hart, Moundman.
Moundman.

Subscribed and sworn to before me this 29 day of January, 1910



Norman J. Johnson
Notary Public.
My commission expires April 26-1913.

WE, _____ and _____

do solemnly swear that we will well and truly perform the duties of axmen in the establishment of corners and other duties, according to instructions given us, to the best of our skill and ability, in the survey of

_____, Axman.
_____, Axman.

Subscribed and sworn to before me this _____ day of _____, 190



I, _____, do solemnly swear that I will well and truly perform the duties of flagman according to instructions given me, to the best of my skill and ability, in the survey of _____

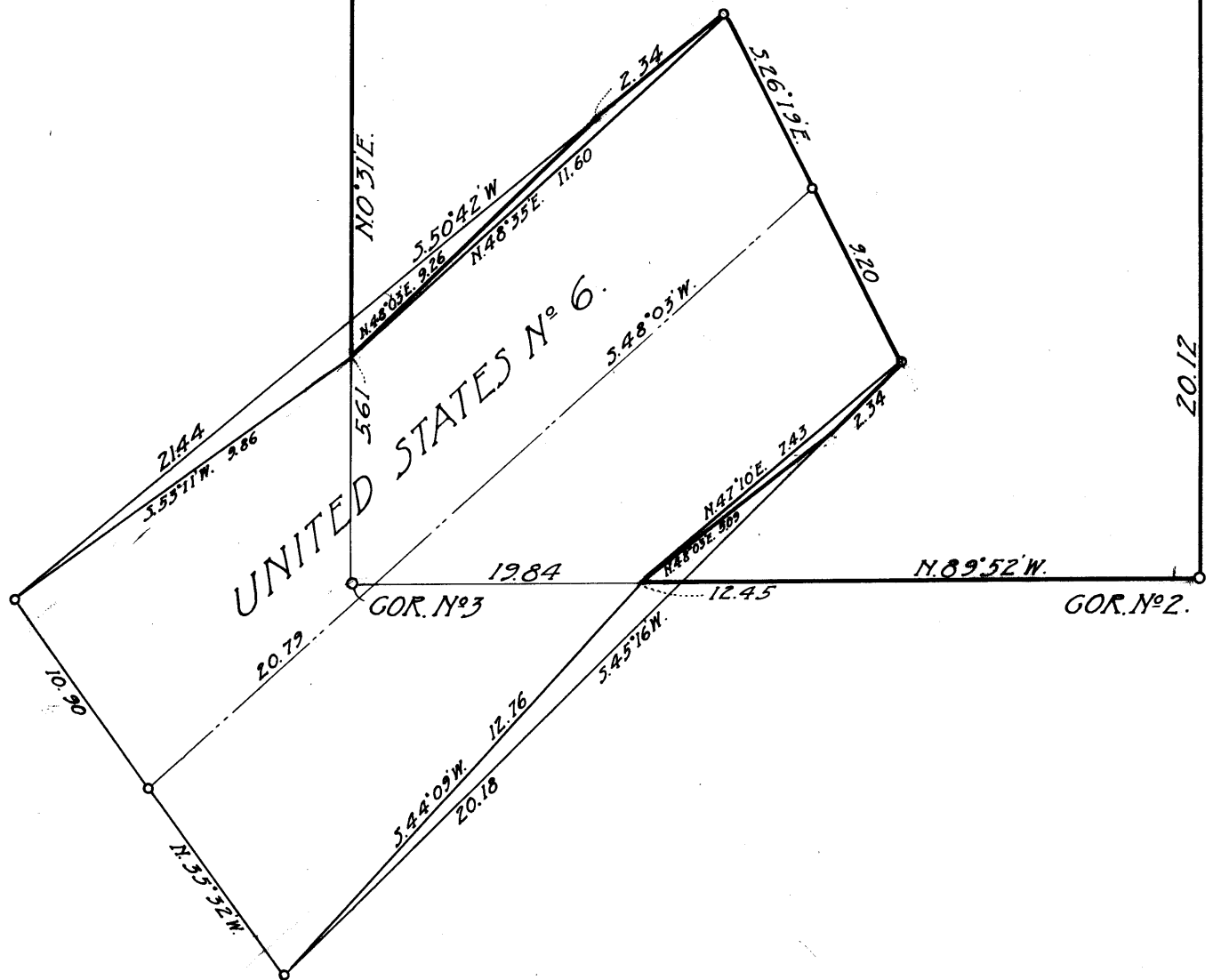
_____, Flagman.

Subscribed and sworn to before me this _____ day of _____, 190



GOR. N° 4. 5.89° 36' E. 19.78 GOR. N° 1.

H.E. 4883.
NW 1/4, SE 1/4 Sec. 26
T. 1 N. R. 15 E.



SEGREGATION SURVEY

of the United States No. 6 Mining Claim,

in conflict with

HOMESTEAD ENTRY No. 4888,

the NW 1/4 of SE. 1/4 of Sec. 26, T. 1 N., R. 15 E.,

G. & S. R. Mer., Arizona.

Determination of Meridian.

January 27, 1910. - 2:05 to 3:15 P.M., Mountain Time.
Latitude 33° 24' North; Longitude 110° 48' West from
Greenwich.

Set on quarter corner between sections 23 and 26, T. 1 N.,
R. 15 E., G. & S. R. Mer., sight to quarter corner between
sections 28 and 25 and deflect to right

39° 31'; altitude 27° 12',
39° 58', " 26° 55',
40° 22', " 26° 37'.

Bisecting the sun with the horizontal and vertical
wires. Giving the bearing of the line between the two
quarter section corners: -

S. 00° 31' W.

S. 00° 32' W.

S. 00° 30' W.

Average

S. 00° 31' W.

Magnetic, S. 12° 59' E.

Magnetic Variation, 13° 30' E.

SEGREGATION SURVEY

of the United States No.6 Mining Claim

in conflict with

HOMESTEAD ENTRY No.4888,

the NW 1/4 of the SE 1/4 of Section 26, T.1 N., R.15 E.,

G. & S.R. Mer., Arizona.

I begin by subdividing Section 26, T.1 N., R.15 E., G. & S.R. Mer. in strict accordance with the circular on the "Restoration of Lost or Obliterated Corners and Subdivision of Sections", Revision of June 1, 1909, and find the NW 1/4 of the SE 1/4 and the United States No. 6 mining claim and their relative position to be as follows:-

United States No.6 Mining Claim.

- Chains. Beginning at the northeast corner, a pine post 4 ins. square, projecting 4 ft. above the ground, in mound of stone, marked NW Cor. U S 6, thence
- 9.20 S. 26° 19' E.
To the southeast corner, a pine post 4 ins. square, projecting 4 ft. above the ground, in mound of stone, marked SE Cor. U S 6.
I examined the ground carefully and was unable to find the east end center monument, so, as the certified copy of the location notice, a copy of which is hereunto attached, calls for the end center monument midway between the northeast and southeast corners I run
- 4.60 N. 26° 19' W.
Set the east end center,
A pine post, 4 ins. square, 4 ft. long, set 18 ins. in the ground, in mound of stone, scribed EE Cen. US No. 6 Seg. Sur.
- Then from the southeast corner I run
- 20.18 S. 45° 16' W.
To the southwest corner, a pine post 4 ins. square, projecting 4 ft. above the ground, in mound of stone, marked SE Cor U S 6.
- N. 25° 32' W.
- 10.90 To the northwest corner, a pine post 4 ins. square, projecting 4 ft. above the ground, in mound of stone, marked SW Cor U S 6.
I examined the ground carefully and was unable to find the west end center monument, so, as the certified copy of the location notice calls for the end center monument midway between the northwest and southwest corners I run
- 5.45 S. 35° 32' E.
Set a pine post, 4 ins. square, 4 ft. long, 18 ins. in the ground, in mound of stone, scribed WE Cen U S No. 6 Seg Sur.

Chains. Thence from the northwest corner I run
N 50°42'E.
21.44 To the northeast corner, the place of beginning.

From the east end center, previously set, I run
S.48°03'W.
20.79 To the west end center.

This survey shows the United States No.6 mining claim to be more than 600 ft. wide at the west end, therefore I will segregate from this homestead entry that portion of the United States No.6 mining claim that is within the monuments as found on the ground and within 300 ft., perpendicular measurement of the center line as determined by the end center monuments.

The NW 1/4 of the SE 1/4 of Section 26.

Beginning at corner No.1, the northeast corner.

A schist stone, 5 x 8 x 24 ins., set 18 ins. in the ground, chiseled HE 1-4888, with mound of stone 2 ft. base, 1-1/2 ft. high alongside,
No bearings available.

20.12 S.00°21'W.
To Cor.No.2.

A granite stone, 6 x 8 x 24 ins., set 18 ins. in the ground, chiseled HE 2-4888, with mound of stone 2 ft. base, 1-1/2 ft. high alongside.
No bearings available.

12.45 N.89°52'W.
Intersect a line parallel to the center line of the United States No.6 mining claim and 300 ft., perpendicular measurement, from it, at a point S.47°10'W. 7.43 chs. from the southeast corner; N.44°09'E. 12.76 chs. from the southwest corner; and S.48°03'W. 5.09 chs. from the intersection of this line with the south side line of the United States No.6 mining claim as monumented on the ground, at a point S.45°16'W. 2.34 chs. from the southeast corner.

19.84 To Cor.No.3.
A quartzite stone 6 x 12 x 28 ins., set 21 ins. in the ground, chiseled HE 3-4888, with mound of stone 1-1/2 ft. high, 2 ft. base alongside.
No bearings available.

5.61 N.00°31'E.
Intersect a line parallel to the center line of the United States No.6 mining claim and 300 ft., perpendicular measurement, from it, at a point N.53°11'E. 9.86 chs. from the northwest corner of the United States No.6 mining claim; S.48°35'W. 11.60 chs. from the northeast corner; and S.48°03'W. 9.26 chs. from the intersection of this line with the north side line of the United States No.6 mining claim, as monumented on the ground, at a point S.50°42'W. 2.34 chs. from the northeast corner.

Chains.

20.21 To Cor.No.4.
 A schist stone, 4 x 8 x 24 ins., set 18 ins. in the ground,
 chiseled HE-4-4883, with mound of stone 2 ft. base, 1-1/2
 ft. high alongside.
 No bearings available.

S. 86° 36' E.
 19.78 To Cor.No.1, the place of beginning.

Area.

Total area HE 4883.	39.95 Acres.
Area in conflict with United States No.6 mining claim	<u>10.69 "</u>
Net area H.E.4883	29.26 Acres.

This survey was made with a Gurley Light Mountain Transit
 No.27. The courses were deflected from the true
 meridian as determined by direct solar observations.
 The distances were mostly measured inclined and
 reduced to the horizontal by the use of the vertical
 angle as measured with the transit.

Magnetic variation at all corners 13° 30' E.

NOTICE OF MINING LOCATION
LODE CLAIM.

TO ALL WHOM IT MAY CONCERN:

This Mining Claim, the name of which is the UNITED STATES NO.6 Mining Claim, situate on lands belonging to the United States of America, and in which there are valuable mineral deposits, was entered upon and located for the purposes of exploration and - - by Anton Trojanovich and John J. Cramer, who are citizens of the United States, the undersigned, on the 31st day of August, 1903.

The length of this claim is Fifteen Hundred Feet, and we claim Fifteen Hundred feet, in a North Easterly, and Southwesterly direction, and we claim 300 feet in a North Easterly and South Westerly direction from the center of the discovery shaft, at which this notice is posted, lengthwise of the claim, together with 300 feet in width of the surface grounds, on each side of the center of said claim. The general course of the lode, deposit and premises is from the North Easterly to the South Westerly.

The claim is situated and located in the Globe Mining District, in Gila County, in the Territory of Arizona, about one mile in a North Westerly - - - from the Town of Globe, Gila County, Territory of Arizona. This claim is bound on the Easterly end by the United States No.3.

The surface boundaries of the claim are marked upon the ground as follows: Beginning at Monument No.1 United States No.6 at a point in a North Easterly direction 300 feet from the discovery shaft (at which this notice is posted), being in the center of the Easterly end line of said claim; thence 300 feet to a Post or Monument, being the South Easterly corner of said claim; thence South Westerly Fifteen Hundred feet to a Post or Monument, being at the South Westerly corner of said claim; thence 300 Westerly feet to a Post or Monument at the center of the Westerly end of said claim; thence Westerly 300 feet to a Post or Monument, being at the North Westerly corner of said claim; thence North Easterly Fifteen Hundred feet to a Post or Monument at the North Easterly corner of said claim; thence South Easterly 300 feet to the place of beginning.

All done under the provisions of Chapter Six, of Title XXXII, of the Revised Statutes of the United States, and of an Act of the General Assembly of Arizona, entitled "An Act to Revise and Codify the Laws of the Territory of Arizona," approved March 16, 1901.

Dated and posted on the ground this 31st day of August, 1903.

Located by John J. Cramer and Anton Trojanovich.

Witness: L. Trojanovich.

Filed and recorded at the request of J.J. Cramer on the 13th day of November, A.D. 1903, at 30 minutes past 10 o'clock A.M.

W. D. Fisk, County Recorder.
By S. Van Wagenen, Deputy.

Territory of Arizona,)
County of Gila.) ss.

I, E. T. Stewart, county recorder in and for the County of Gila, Territory of Arizona, do hereby certify that the above and foregoing contain and constitute a full, true and correct copy of the location notice of the UNITED STATES NO.6 mining claim, as the same appears of record in my office in Book 8, Records of Mines, at page 50; that I have compared the same with the original record, and that the same is a true transcript and of the whole thereof.

Given under my hand and seal of office this 10th day of January, A.D. 1910.

E.T. Stewart,
County Recorder, Gila County, A.T.

FINAL OATHS OF DEPUTY SURVEYOR AND HIS ASSISTANTS.

BOOK 2364

LIST OF NAMES.

A list of the names of the individuals employed by Howard C. Hopkins
mineral
United States ~~Deputy~~ Surveyor, to assist in running, measuring, and

marking the lines and corners described in the foregoing field notes of Segregation Survey
of the conflict between United States No. 6 Mining Claim and Homestead Entry
No. 4883, for the N.W. 1/4, S.E. 1/4, Section 26, T. 1 N., R. 15 E., G. & S. R. Mer.
showing the respective capacities in which they acted:

H. L. Way....., Chairman.

S. G. Hart....., Chairman.

S. G. Hart....., Moundman.

....., Moundman.

....., Axman.

....., Axman.

....., Flagman.

FINAL OATH OF ASSISTANTS.

We hereby certify that we assisted Howard C. Hopkins
mineral
United States ~~Deputy~~ Surveyor, in surveying all

those parts or portions of the Segregation Survey of the United States
No. 6 Mining Claim, in conflict with Homestead
Entry No. 4883, the N.W. 1/4 of S.E. 1/4, Sec. 26, T. 1 N.,
R. 15 E., G. & S. R. Mer...... of the

..... meridian, of Arizona, which are represented
in the foregoing field notes as having been surveyed by him and under his direction; and that said survey
has been in all respects, to the best of our knowledge and belief, well and faithfully surveyed, and the
corner monuments established, according to the instructions furnished by the United States Surveyor
General for Arizona

H. L. Way....., Chairman.

S. G. Hart....., Chairman.

S. G. Hart....., Moundman.

The signature of H. L. Way, subscribed and sworn to before me
this fourteenth day of March, 1910.

Thomas Johnson
Notary Public.

My commission expires April 26, 1913.

My commission expires

6 231
BOOK 2564
FINAL OATH OF UNITED STATES DEPUTY SURVEYOR.

I, Howard C. Hopkins, United States ^{mineral} ~~Deputy~~ Surveyor, do solemnly swear that, in pursuance of a ^{order} ~~contract~~ received from Hon. Frank S. Ingalls United States Surveyor General for Arizona, bearing date of the 11th day of January, 1980, I have well, faithfully, and truly, in my own proper person, and in strict conformity with the instructions furnished by the United States Surveyor General for Arizona, the Manual of Surveying Instructions, and the laws of the United States, surveyed all those parts or portions of Segregation Survey of the United States No 6 Mining Claim, in conflict with N. E. 4883, the N. W. 1/4 of S. E. 1/4 Sec. 26, T. 1 N., R. 15 E.

of the G. & S. R. meridian, in the Territory of Arizona, which are represented in the foregoing field notes as having been surveyed by me, and under my direction; and I do further solemnly swear that all the corners of said survey have been established and perpetuated in strict accordance with the Manual of Surveying Instructions, and the special written instructions of the United States Surveyor General for Arizona and in the specific manner described in the field notes, and that the foregoing are the original field notes of such survey.

Howard C. Hopkins
United States ~~Deputy~~ Surveyor.
^{mineral}

Subscribed by said Howard C. Hopkins, and sworn to before me
this 22nd day of March, 1980,

Norman J. Johnson
Notary Public.



My Commissioner Expires April 26-1913
APPROVAL.

OFFICE OF THE UNITED STATES SURVEYOR GENERAL,

Theris Aug, April 15-1910, 190

The foregoing field notes of the survey of segregating the United States Mining Claim No 6 - unswamped - from N. E. 4883 to N. W. 1/4, S. E. 1/4 Sec 26, T. 1 N. R. 15 E. Gila and Salt River Base and Meridian, Arizona

executed by Howard C. Hopkins, M.D. Min. Prod under his contract No. order, dated Jan. 11 - 1910, 190, having been critically examined, and the necessary corrections and explanations made, the said field notes, and the surveys they describe, are hereby approved.

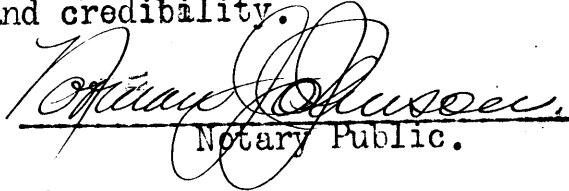
Frank S. Ingalls
United States Surveyor General.

I certify that the foregoing transcript of the field notes of the above-described surveys in _____, has been correctly copied from the original notes on file in this office.

United States Surveyor General.

5A I, Norman J. Johnson, a Notary Public in and for the County of Gila, Territory of Arizona, hereby certify that I have known the above named Howard C. Hopkins, for the past three years and I know him to be a man of good character and credibility.

BOOK 2364


Notary Public.

My commission expires April 26th., 1913.