

2506

147  
1

4-679

Book A.

BOOK 2506

# FIELD NOTES

OF THE SURVEY OF THE

SUPERIOR TOWNSITE

in

Section 35 of T. 1 S. R. 12 E.

Of the Gila and Salt River Base and Meridian,

In the State of ARIZONA

EXECUTED BY

Sidney E. Blout,

In the capacity of U. S. Surveyor, under instructions dated October 24, 1913,  
issued by the United States Surveyor General to govern surveys included in  
Group No. 31, which were approved by the Commissioner of the General Land  
Office, November 1, 1913, pursuant to authority contained in the Act of  
Congress dated June 22, 1913.

Survey commenced February 24, 1914

Survey completed February 27, 1914

148  
1A

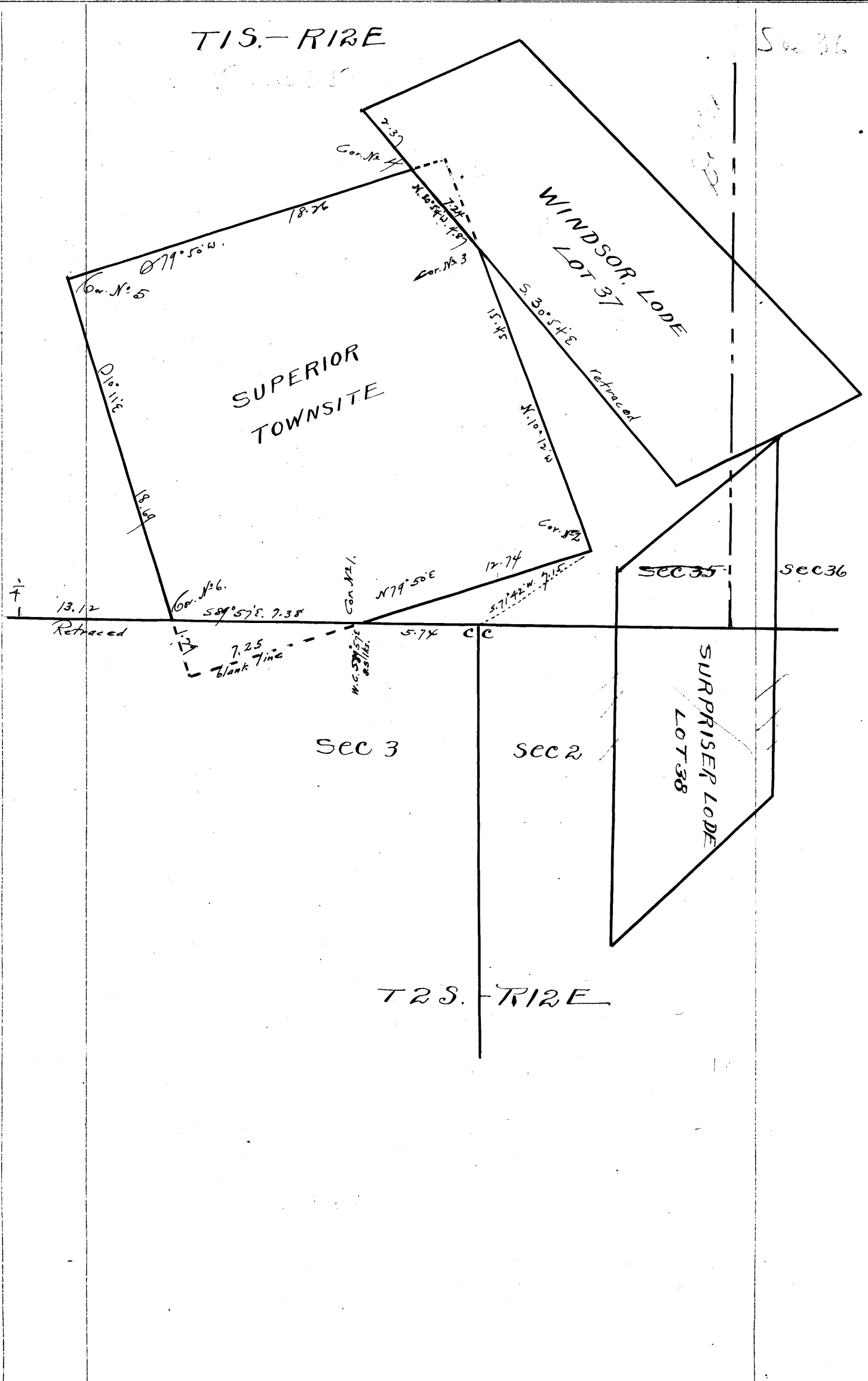
BOOK 2506

# INDEX DIAGRAM.

Township \_\_\_\_\_, Range \_\_\_\_\_

6	5	4	3	2	1
7	8	9	10	11	12
18	17	16	15	14	13
19	20	21	22	23	24
30	29	28	27	26	25
31	32	33	34	35	36

INDEX DIAGRAM





Chains. Survey commenced February 24 and executed with a Young and sons light mountain transit No. 10 with a solar attachment; the horizontal limb being provided with two double verniers, placed opposite to each other reading to single minutes of arc, which is also the least count of the verniers of the latitude and declination arcs.

I examine the adjustments of the transit and correct the level and collimation errors; then to test the solar apparatus by comparing its indications, resulting from solar observations, made during a.m., and p.m. hours, with a meridian established by observation on Polaris I proceed as follows.

At the closing cor. of secs. 2 and 3 T. 2 S., R. 12 E., which is a granite stone 12x10x7 ins. above ground, firmly set, marked and witnessed as described by the surveyor general. latitude  $33^{\circ} 17' 20''$  N., longitude  $111^{\circ} 06' 10''$  W. At  $9^{\text{h}} 08^{\text{m}}$  p.m., l.m.t. I observe Polaris at western elongation, and mark the direction thus determined by a small nail driven in a stake set in the ground on the north bank of Queen Creek about 3.50 chs. dist.

February 24, 1914.

February 25 1914. at  $7^{\text{h}} 30^{\text{m}}$  a.m. I lay off the azimuth of Polaris  $1^{\circ} 22'$  to the east and mark the true meridian thus determined by a cross (X) cut on a boulder on the north bank of Queen Creek east of the stake set last evening.

At  $7^{\text{h}} 43^{\text{m}}$  a.m., l.m.t. I set off  $33^{\circ} 17' \text{N.}$  on the lat. arc,  $9^{\circ} 12\frac{1}{2}' \text{S.}$  on the decl. arc, and determine a meridian with the solar and mark a point thereof by a cross on the boulder on the north bank of Queen Creek.; this point falls  $0^{\circ} 00\frac{1}{2}' \text{E.}$  of the meridian established by the Polaris observation.

At  $1^{\text{h}} 43^{\text{m}}$  p.m., l.m.t. I set off  $33^{\circ} 17' \text{N.}$  on the lat. arc,  $9^{\circ} 08\frac{1}{2}' \text{S.}$  on the decl. arc, and determine a meridian with the solar and mark a point thereof by a cross on the boulder on the north bank of Queen Creek.; this point coincides with the point established by the Polaris observation.

The solar apparatus by a.m., and p.m. observations defines positions for meridians respectively about  $0' 30'' \text{E.}$  and identical with the meridian established by the Polaris observation.; therefore I conclude that the adjustments of the instrument are satisfactory.

In order to determine accurately the exact points of intersection of the south and west boundaries of the Superior Townsite with the N. bdry. of T. 2 S., R. 12 E. and the north and east boundaries of said townsite with the west boundary of the Windsor lode claim Lot No 37., which points of intersection determine the location of corners Nos. 1, 3, 4, and 6. of the townsite., I retrace the N. bdry of sec. 3 T. 2 S., R. 12 E., the west boundary of the Windsor lode claim., and the N., E., S., and W. boundaries of the Superior Townsite as marked on the ground by the corners of the preliminary survey of the same, as follows;

February 25 1914. At  $2^{\text{h}} 13^{\text{m}}$  p.m., l.m.t. I set off  $33^{\circ} 17' \text{N.}$  on the lat. arc,  $9^{\circ} 08' \text{S.}$  on the decl. arc, and determine a meridian with the solar at the closing cor. of secs. 2 and 3 T. 2 S., R. 12 E. previously described.

Thence I run

West on a random line along the N. bdry. of sec. 3.

26-24 Fall 02 lks. S. of the  $\frac{1}{4}$  sec. cor. on the S. bdry of sec. 35

T. 1 S., R. 12 E.

Course of line back to the closing cor. of secs. 2 and 3. is S  $89^{\circ} 57' \text{E.}$

Chains.

At 2<sup>h</sup> 45<sup>m</sup> p.m., l.m.t. I set off 33° 17' N. on the lat. arc, 9° 07' S. on the decl. arc and determine a meridian with the solar at the stone set for the southwest cor. of the townsite in the preliminary survey of the same.

19.99 Thence I run N 79° 51' E. on a random line on S. bdry of the townsite. Fall 00½ lk. S 10° 09' E. of the SE. cor. of townsite which is a granite stone 12X12X2 ins. above ground, firmly set marked with a cross (X) for cor. point. Course of line back to the SW. cor. S 79° 50' W.

15.45 From the southeast cor. of townsite I run N 10° 09' W. on a random line on the east boundary. Fall 01¼ lk. N 79° 51' E. of a cor. set in the preliminary survey at the intersection of the east boundary of the townsite with the west boundary of the Windsor lode claim, which is a granite stone 10X10X4 ins. above ground firmly set, marked with a cross (X) for cor. point.

4.87 From this cor. I run True course S 10° 11' E. N 30° 55' W. on a random line on E. bdry. of townsite. Fall .001 lk. S 59° 05' W. of the NE. cor. of the townsite which is a granite stone 10X8X4 ins. above ground, marked with a cross (X) for cor. point. Course of line back to the last cor. S 30° 54' E. February 25, 1914.

February 26, 1914. At 7<sup>h</sup> 45<sup>m</sup> a.m., l.m.t. I set off 33° 17' N. on the lat. arc, 8° 50' S. on the decl arc and determine a meridian with the solar at the NW. cor. of the townsite set in the preliminary survey of the same, which is a lime stone 16X15X8 ins. above ground, firmly set, marked with a cross (X) for cor. point.

18.26 Thence I run N 79° 51' E. on a random line along N. bdry. of townsite. Fall 00½ lk. S 10° 09' E. of the NE. cor. previously described. Course of line back to the NW. cor. S 79° 50' W.

19.98 I return to the NW. cor. of the townsite. Thence I run S 10° 09' E. on a random line along the W. bdry. Fall 01 lk. S 79° 51' W. of the SW. cor. of the townsite. Course of line back to the NW. cor. N 10° 11' W. February 26, 1914.

February 25, 1914. At 4<sup>h</sup> 13<sup>m</sup> p.m., l.m.t. I set off 33° 17' N. on the lat. arc, 9° 05' S. on the decl. arc and determine a meridian with the solar at the NW. cor. of the Windsor lode claim Lot. NO. 37, which is a post 4 ins. sq. 3 ft. above ground, firmly set in a mound of stone, marked W. NW. Cor. on SE. face. Thence I run S 31° 15' E. on a random line on W. bdry. of the claim. 21.88 Fall 13 lks. N 58° 45' E. of the SW. cor. Course of line back to the NW. cor. N 30° 54' W.

February 25, 1914.

Having determined the true bearing of the north boundary of sec. 3.T.2 S., R. 12 E., the west boundary of the Windsor lode claim and the boundaries of the townsite I return to the SW. cor. of the townsite as marked by the preliminary survey and survey the townsite as follows;

## Survey of the Superior Townsite.

3

Chains.

- February 26.1914. At  $2^h 15^m$  p.m., l.m.t. I set off  $33^\circ 17' N$  on the lat. arc.,  $8^\circ 45' S$  on the decl. arc and determine a meridian with the solar. Thence I run  
 N  $79^\circ 50' E$  on a blank line through sec. 3.  
 7.25 Intersect the N.bdry. of sec. 3 T.2S., R.12E. 5.74 chs.  
 N  $89^\circ 57' W$  of the closing cor. of secs. 2 and 3.; This point falls on a granite boulder  $4 \times 3 \times 2$  ft. above ground where I am unable to establish a post cor.; therefore at the exact point of intersection I drill a hole in the boulder and cement a  $\frac{1}{2}$  in. iron pipe filled with cement in the hole for the exact point for cor. No.1 of the Superior Townsite., and at a point  $8\frac{1}{2}$  lks. S  $89^\circ 57' E$  of the true point I set an iron post  $\frac{3}{4}$  ft. long, 1 in. in diam. 26 ins. in the ground for witness cor. to cor. No.1 of the Superior Townsite., marked on brass cap WC.ST.Cor.No.1 in the N.half.  
 Thence from the true point for. cor. No.1 I run  
 N  $79^\circ 50' E$  on a true line on the S.bdry. of the Superior Townsite.  
 12.74 Intersect the stone at the SE. cor. of the townsite. I remove this stone and in the same place set an iron post  $\frac{3}{4}$  ft. long, 1 in. in diam. 26 ins. in the ground for cor. No.2 of the Superior Townsite., marked on brass cap ST.Cor.No.2 in the NW. quadrant.  
 From this cor. the closing cor. of secs. 2 and 3. T.2 S., R.12 E. bears S  $71^\circ 42' W$ . 7.15 chs. dist.  
 From cor. NO.2 I run  
 N  $10^\circ 12' W$  on a true line on E.bdry. of townsite.  
 15.45 Intersect the west boundary of the Windsor lode claim 7.24 chs. S  $30^\circ 54' E$  of the NW.cor. of said claim. This point being identical with a cor. of the preliminary survey of the townsite.; I destroy the cor. of the preliminary survey and in the same place set an iron post  $\frac{3}{4}$  ft. long, 1 in. in diam. 26 ins. in the ground for. cor. No.3 of the Superior Townsite., marked on brass cap ST.Cor.No.3 in W.half.  
 From cor.No.3. I run  
 N  $30^\circ 54' W$  on a true line on E.bdry. of townsite and west boundary of the Windsor lode claim.  
 4.87 To the point of intersection of the N.bdry. of the townsite with the W.bdry. of the Windsor lode claim, which is identical with the NE.cor. of the townsite as marked by the preliminary survey.; I destroy the cor. of the preliminary survey, and in the same place set an iron post  $\frac{3}{4}$  ft. long, 1 in. in diam. 26 ins. in the ground for cor. No.4 of the Superior Townsite., marked on brass cap ST.Cor.No.4 in SW. quadrant.

February 26, 1914.

- February 27.1914. At  $8^h 15^m$  a.m., l.m.t. I set off  $33^\circ 17' N$  on the lat. arc,  $8^\circ 28' S$  on the decl. arc, and determine a meridian with the solar at cor. No.4 of the Superior Townsite, which I established last evening. Thence I run  
 S  $79^\circ 50' W$  on a true line on N.bdry. of townsite.  
 18.26 Intersect the stone, set in the preliminary survey, to mark the NW.cor. of the townsite.; I destroy this cor. and in the same place set an iron post  $\frac{3}{4}$  ft. long, 1 in. in diam. 26 ins. in the ground for cor. No.5 of the Superior Townsite., marked on brass cap ST.Cor.No.5 in the SE. quadrant.  
 From cor.No.5 I run  
 S  $10^\circ 11' E$  on a true line on W.bdry. of townsite.  
 18.69 Intersect the N.bdry. of T.2 S., R.12 E. 13.12 chs. N  $89^\circ 57' W$ .

## Survey of the Superior Townsite.

- Chains. of the closing cor. of secs. 2 and 3. T.2 S., R.12 E.  
Set an iron post 3 ft. long, 1 in. in diam. 26 ins. in the  
ground for cor. No. 6 of the Superior Townsite., marked  
on brass cap ST. Cor. No. 6 in NE. quadrant.
- 19.98 Intersect the stone set in the preliminary survey to mark  
the SW. cor. of the townsite.; I destroy this cor.
- I return to cor. No. 6 just established. Thence I run  
S  $89^{\circ}57'E$ . on a true line on S. bdry. of townsite and N. bdry.  
of sec. 3 T.2 S., R.12 E.
- 7.38 Intersect the true point for cor. No. 1 the place of beginning.
- Note At cor. No. 1 I set off  $8^{\circ}25'S$ . on the decl. arc, and at noon  
observe the sun on the meridian and obtain a reading  
of  $33^{\circ}17'N$ . on the lat. arc.

February 27, 1914.

*Sidney E. Blout*  
U.S. Surveyor



DIRECTIONS.—1. Carry out the area in acres to three decimals, and all other calculations to two decimals only.

2. In balancing Lat. and Dep. do not obliterate or change the original figures: Do not change the footing of the original figures, but put below them the corrected footing in red ink.

Put the corrected figure or figures above in red ink. Do not change the footing of the original figures, but put below them the corrected footing in red ink. The corrections for balancing fallings should be proportional to the lengths of the lines. In calculations of fallings take result to nearest hundredth. In calculations of N. and S. areas drop all after second decimal. Surveyors are advised to use the Standard Field Tables issued by G. L. O.

**TABLING AND CALCULATIONS OF**

*Superior Townsite*

6-86

No.	COURSE.	DISTANCE.	LATITUDES.		DEPARTURES.		DOUBLE M. D.	N. AREAS.	S. AREAS.
			NORTH.	SOUTH.	EAST.	WEST.			
	<i>N 79° 50' E</i>	<i>1278</i>	<i>2125</i>		<i>1753</i>		<i>3389</i>	<i>7675</i>	
	<i>N 10° 12' W</i>	<i>1545</i>	<i>1580</i>		<i>274</i>		<i>4325</i>	<i>66294</i>	
	<i>N 30° 54' W</i>	<i>487</i>	<i>418</i>		<i>250</i>		<i>3844</i>	<i>16068</i>	
	<i>S 79° 50' W</i>	<i>1826</i>		<i>322</i>			<i>1797</i>		<i>5782</i>
	<i>S 10° 11' E</i>	<i>1869</i>		<i>1840</i>			<i>331</i>		<i>6072</i>
	<i>S 89° 57' E</i>	<i>738</i>		<i>01</i>			<i>1398</i>		<i>14</i>
			<i>2163</i>	<i>2163</i>	<i>7321</i>	<i>7321</i>		<i>90087</i>	<i>11872</i>
								<i>11872</i>	
								<i>278215</i>	
								<i>39.11 Acres</i>	
	<i>N 79° 50' E</i>	<i>1278</i>							
	<i>S 71° 42' W</i>	<i>715</i>							
	<i>S 19° 57' W</i>	<i>575</i>							

CERTIFICATE OF ASSISTANTS.

We, the undersigned, hereby certify upon honor that we assisted, to the best of our skill and ability,

Sidney E. Blout, U. S. Surveyor, during the periods and in the capacities stated opposite our several signatures, in surveying all those parts or portions of the Superior Townsite, in Township No. 1 South of Range No. 12 East

of the Gila and Salt River Meridian, in the State of Arizona which are represented in the foregoing field notes as having been executed by him, and under his direction; and that said survey has been, in all respects, to the best of our knowledge and belief, well and faithfully executed.

NAME.	PERIOD OF SERVICE.		CAPACITY.
	BEGUN.	ENDED.	
<u>E. B. Starn</u>	<u>Feb. 24<sup>th</sup> 1913</u>	<u>Feb. 27<sup>th</sup> 1913</u>	<u>Chairman</u>
<u>J. Y. White</u>	<u>Feb. 24<sup>th</sup> 1913</u>	<u>Feb. 27<sup>th</sup> 1913</u>	<u>Chairman</u>
<u>E. J.</u>			

Subscribed and certified to before me on the dates of the final service as shown above.

Sidney E. Blout  
U. S. Surveyor.

FINAL OATH OF UNITED STATES SURVEYOR.

I, Sidney E. Blout, U. S. Surveyor, do solemnly swear that, in pursuance of special instructions received from the U. S. Surveyor General for Arizona for Group 31 bearing date of the 24<sup>th</sup> day of October, 1913, I have well, faithfully, and truly, in my own proper person, and in strict conformity with said instructions, the Manual of Surveying Instructions, and the laws of the United States, surveyed all those parts or portions of the Superior Townsite, in Township No. 1 South of Range No. 12 East

of the Gila and Salt River Meridian, in the State of Arizona, which are represented in the foregoing field notes as having been executed by me, and under my direction; and I do further solemnly swear that all the corners of said survey have been established and perpetuated in strict accordance with the Manual of Surveying Instructions, and the special written instructions of the U. S. Surveyor General for Arizona for Group 31 and in the specific manner described in the field notes, and that the foregoing are the original field notes of such survey.

Sidney E. Blout  
U. S. Surveyor.

Subscribed by said Sidney E. Blout, and sworn to before me }  
this 19<sup>th</sup> day of December, 1914



Frank Ingalls  
SURVEYOR-GENERAL OF ARIZONA

APPROVAL.

OFFICE OF THE UNITED STATES SURVEYOR GENERAL,  
Tucson, Ariz. Jan. 4, 1915

The foregoing field notes of the survey of Superior Townsite in Sec. 35 of T. 1 N. R. 12 E., B. S. R. Band M.

executed by Sidney E. Blout U. S. Surveyor under his special instructions dated November 1, 1913 for Group 31, ~~1913~~, having been critically examined, and the necessary corrections and explanations made, the said field notes, and the surveys they describe, are hereby approved.

Frank Ingalls  
U. S. Surveyor General.  
of Arizona.

I certify that the foregoing transcript of the field notes of the above described surveys in \_\_\_\_\_, has been correctly copied from the original notes on file in this office.

\_\_\_\_\_  
U. S. Surveyor General.