

Standard
BOOK "P"

2522

(1)

BOOK 2522

FIELD NOTES

OF THE SURVEY OF THE

*Third Guide Meridian East through
Townships No 27 North, Between
Ranges Nos 12 and 13 East*

Of the Gila and Salt River Base and Meridian,

in the Territory of Arizona

EXECUTED
AS SURVEYED BY

Van L. White U.S. Measurer, United States Deputy Surveyor,

Special Instructions from the Commissioner of the General Land Office

Under his Contract No. _____, dated Oct 2nd 1907 and May 15th 1908

Survey commenced *October 29th*, 1910

Survey completed *October 29th*, 1910

NAMES AND DUTIES OF ASSISTANTS.

T. Y. White

Chairman

Oscar W. Fetters

Chairman

George B. Seig

Chairman

Nelson Polacco

Chairman

Ralph C. Sampson

Moundman

William R. Carson

Flagman

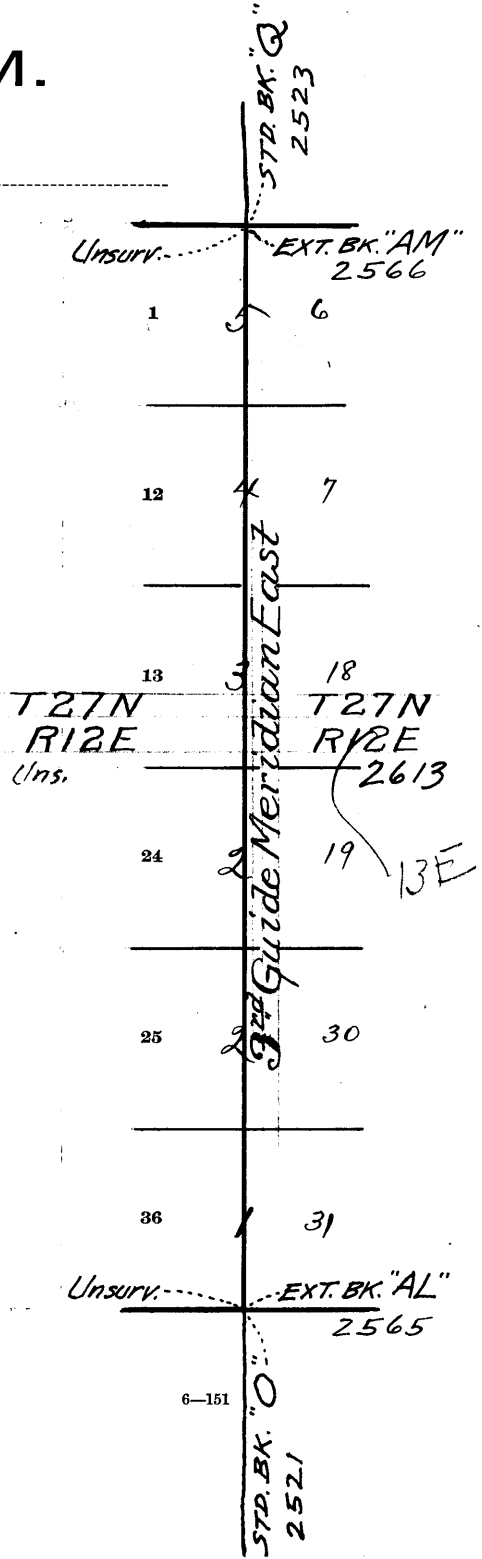
31
1B

BOOK 2522

INDEX DIAGRAM.

Township _____, Range _____

6	5	4	3
7	8	9	10
18	17	16	15
19	20	21	22
30	29	28	27
31	32	33	34



Meanders Page _____

PRELIMINARY OATHS OF ASSISTANTS.

32
BOOK 2522

WE, George B Seig, T. J. White and Nelson Polacca and Oscar W Fetters
do solemnly swear that we will well and faithfully execute the duties of chainmen; that we will level the chain upon even and uneven ground, and plumb the tally pins, either by sticking or dropping the same; that we will report the true distances to all notable objects, and the true lengths of all lines that we assist in measuring, to the best of our skill and ability, and in accordance with instructions given us, in the survey of

3rd Guide Meridian E. through Tps 27 N. bet. Rs 12 and 13 E.
G. & S. R. Base & Mer., Arizona.

George B Seig. and T. J. White, Chainmen.
Nelson Polacca and Oscar W Fetters, Chainmen.

Subscribed and sworn to before me this 28th
day of Oct., 1910



Van L. White
U.S. Transitman

I, Ralph C. Sampson
do solemnly swear that ~~we~~ ^{me} will well and truly perform the duties of moundman in the establishment of corners, according to the instructions given ~~us~~ ^{me} to the best of ~~our~~ ^{my} skill and ability, in the survey of

3rd Guide Meridian E. through Tps 27 N. bet. Rs. 12 and 13 E.
G. & S. R. Base and Meridian, Arizona.

Ralph C. Sampson, Moundman.

Subscribed and sworn to before me this 28th
day of Oct., 1910



Van L. White
U.S. Transitman

I, George B. Seig
do solemnly swear that ~~we~~ will well and truly perform the duties of axman in the establishment of corners and other duties, according to instructions given ~~us~~ ^{me} to the best of ~~our~~ ^{my} skill and ability, in the survey of

3rd Guide Meridian E. through Tps 27 N. bet. Rs 12 and 13 E.
G. & S. R. Base & Mer., Arizona.

George B. Seig, Axman.

Subscribed and sworn to before me this 28th
day of Oct., 1910



Van L. White
U.S. Transitman

I, William R. Carson, do solemnly swear that I will well and truly perform the duties of flagman according to instructions given me, to the best of my skill and ability, in the survey of

3rd Guide Meridian E. through Tps 27 N. bet. Rs 12 and 13 E.
G. & S. R. Base & Mer., Arizona.

William R. Carson Flagman.

Subscribed and sworn to before me this 28th
day of Oct., 1910



Van L. White
U.S. Transitman

BOOK 2522

Survey commenced October 29th 1910, and executed with a W. & L. E. Gurley engineers transit No. 76 with a Bush Solar attachment, the horizontal limb being provided with one double vernier, reading to single minutes of arc; the verniers of the latitude and declination arcs, reading to 0°30' of arc. I examined the adjustments of the transit and find them correct and know from recent tests of the solar apparatus, by comparing its indications resulting from solar observations with a meridian established by observations on Polaris that the instrument is in satisfactory adjustment. For last complete test of instrument see field notes of the survey of the subdivision lines of Twp 26 N., R 13 E.

I began at the cor. of Twp. 26 and 27 N., R's 12 and 13 E., which I established October 14th 1910, and described in Standard Book 9. Latitude 35°41'01" N. Longitude 111°00'32" W. At 7^h 44^m a.m. I set a stake off 35°41' N. on the lat. arc. 13°15' S. on the decl. arc, and determined a meridian with the solar. thence I run North by sec. 31 and 36.

Around SW slope over clayey land.

- 10.60 Top of clay ridge bears E and W. desc.
- 15.62 Dry ravine 25 ft. below top of ridge course S.E. arc.
- 38.70 Top of ridge bears E and W. desc.
- Difference bet. measurements of 40.00 chs. by two sets of chainmen is 06 lbs. position of middle point
 By 1st set. 40.03 chs.
- By 2nd set. 39.97 chs. the mean of which is
- 40.00 Set an iron post 3 ft. long 1 in. in diam. - 26 in. in the ground for 1/4 sec. cor. marked on brass cap 1/4 S 36 on W. half and S 31 on E half
- Dig pits 18 x 18 x 12 ins. N. and S. of post 3 ft. dist. and raise a mound of earth 3 1/2 ft. base, 1 1/2 ft. high W. of cor.
- 41.70 Dry ravine 5 ft. below 1/4 sec. cor. course S.E. arc.
- 56.00 Top of steep ascent, hard hilly land bears E and W. Enter rolling sandy land bears E and W.
- Difference bet. measurements of 80.00 chs. by two sets of chainmen is 08 lbs. position of middle point
 By 1st set. 80.04 chs.

The Third Guide Meridian East through N^o 27 N, T^h 12 and 13 E.
2 chains

BOOK 2522

80.00 By 2nd Set. 77.96 chs. the mean of which is
Set an iron post 3 ft. long 3 ins. in diam. 24 ins. in
the ground for cor. of sec. 25, 30, 31 and 36. marked
on brass cap T 27 N. in N. half, R 12 E S 25 in N.W.
R 13 E S 30 in N.E. S 31 in S.E. and S 36 in S.W. quadrant.
Dig pits 18x18x12 ins. in each sec. 5 1/2 ft. dia. and raise a
mound of earth 4 ft. base 2 ft. high W. of cor.
Land rolling and hilly.
Soil sandy and clayey. 3rd and 4th rate.
No timber

North bet. sec 25 and 30.

Over rolling sandy mesa land through scattering
sage brush undergrowth and bunch grass.

Difference bet. measurements of 40.00 chs. by two sets
of chainmen is 02 lbs. position of middle point

By 1st set. 39.99 chs.

By 2nd set. 40.01 chs. the mean of which is

40.00 Set an iron post 3 ft. long 1 in. in diam. 26 ins. in
the ground for 1/4 sec. cor. marked on brass cap 1/4 S
25 on W. half and S 30 on E half

Dig pits 18x18x12 ins. N and S. of post. 3 ft. dia. and
raise a mound of earth 3 1/2 ft. base 1 1/2 ft. high W.
of cor.

Difference bet. measurements of 80.00 chs. by two
sets of chainmen is 04 lbs. position of middle point

By 1st set. 79.98 chs.

By 2nd set. 80.02 chs. the mean of which is

80.00 Set an iron post 3 ft. long 3 ins. in diam. 24 ins. in the
ground for cor. of sec. 19, 24, 25 and 30, marked
on brass cap T 27 N. in N. half, R 12 E S 24 in N.W.
R 13 E S 19 in N.E. S 30 in S.E. and S 25 in S.W. quadrant.

Dig pits 18x18x12 ins. in each sec. 5 1/2 ft. dia. and
raise a mound of earth 4 ft. base, 2 ft. high W. of cor.

Land rolling.

Soil sandy 3rd rate.

No timber

North bet. sec. 19 and 24

Over rolling sandy land through sage and

greasewood brush undergrowth and bunch grass
Difference bet. measurements of 40.00 chs. by two sets
of chainmen is .04 lbs. position of middle point

40.00

By 1st set. 39.98 chs.
By 2nd set. 40.02 chs, the mean of which is
Set an iron post 3 ft. long 1 in. in diam. 26 in. in
the ground for $\frac{1}{4}$ sec. cor. marked on brass cap $\frac{1}{4}$
S 24° 00' W. half and S 19° 00' E. half

Dig pits 18 x 18 x 12 in. N and S of post. 3 ft. dist.
and raise a mound of earth $3\frac{1}{2}$ ft. base $1\frac{1}{2}$ ft. high
W. of cor.

NOTE

At this cor. set off $13^{\circ} 20\frac{1}{2}'$ S. on the decl arc and
at noon observe the sun on the meridian and
obtain a reading of $35^{\circ} 43' N$.

Difference bet. measurements of 80.00 chs. by two
sets of chainmen is .06 lbs. position of middle point

80.00

By 1st set. 80.03 chs.
By 2nd set. 79.97 chs, the mean of which is.
Set an iron post 3 ft. long 3 in. in diam. 24 in. in
the ground for cor. of sec. 13, 18, 19 and 24, marked
on brass cap T 27 N, in N. half, T 12 E S 13 in N.W.,
T 13 E S 18 in N.E. S 19 in S.E. and S 24 in S.W. quadrant.
Dig pits 18 x 18 x 12 in. in each sec. $5\frac{1}{2}$ ft. dist. and
raise a mound of earth 4 ft. base 2 ft. high W.
of cor.

Land rolling
Soil sandy 3rd rate
No timber

North bet. sec. 13 and 18.

Over rolling sandy land slopes to S.W. through sage
and greasewood brush undergrowth and bunch
grass.

Difference bet. measurements of 40.00 chs. by two sets
of chainmen is .02 lbs. position of middle point

40.00

By 1st set. 39.99 chs.
By 2nd set. 40.01 chs, the mean of which is
Set an iron post 3 ft. long 1 in. in diam. 26 in. in the
ground for $\frac{1}{4}$ sec. cor. marked on brass cap $\frac{1}{4}$ S 13
° 00' W. half and S 18° 00' E. half

Dig pits 18 x 18 x 12 in. N and S. of post. 3 ft. dist. and

BOOK 2522

raise a mound of earth 3 1/2 ft. base, 1 1/2 ft. high W. of cor.

67.00 Top of land ridge bears N.W. and S.E. desc
Difference bet. measurements of 80.00 Chs. by two sets of chainmen is 0.2 lbs. position of middle point
By 1st set. 80.01 Chs.

By 2nd set. 79.99 Chs. the mean of which is
80.00 Set an iron post 3 ft. long, 3 ins. in diam. 24 ins. in the ground for cor. of Secs 7, 12, 13 and 18, marked on brass cap T 27 N. in N. half, R 12 E S 12 in N.W. R 13 E S 7 in N.E., S 18 in S.E. and S 13 in S.W. quadrant. Dig pits 18 x 18 x 12 ins. in each sec. 5 1/2 ft. dist. and raise a mound of earth 4 ft. base, 2 ft. high. W. of cor.

Land rolling.
Soil sandy 3rd rate.
No timber.

North bet. Secs 7 and 12.

Over rolling sandy land through scattering sage and greasewood brush undergrowth and bunch grass.

Difference bet. measurements of 40.00 Chs. by two sets of chainmen is 0.2 lbs. position of middle point
By 1st set. 39.99 Chs.

By 2nd set. 40.01 Chs. the mean of which is
40.00 Set an iron post 3 ft. long 1 in. in diam. 26 ins. in the ground for 1/4 sec. cor. marked on brass cap. N 45 12 in W. half and S 7 on E half.

Dig pits 18 x 18 x 12 ins. N and S. of post. 8 ft. dist. and raise a mound of earth 3 1/2 ft. base 1 1/2 ft. high. W. of cor.

Difference bet. measurements of 80.00 Chs. by two sets of chainmen is 0.4 lbs. position of middle point
By 1st set. 79.98 Chs.

By 2nd set. 80.02 Chs. the mean of which is
80.00 Set an iron post 3 ft. long 3 ins. in diam. 24 ins. in the ground for cor. of Secs 16, 7 and 12, marked on brass cap T 27 N. in N. half, R 12 E. S 1 in N.W. R 13 E. S 6 in N.E. S 7 in S.E. and S 12 in S.W. quadrant. Dig pits 18 x 18 x 12 ins. in each sec. 5 1/2 ft. dist. and

BOOK 2522

raise a mound of earth 4 ft. base, 2 ft. high. W.
of cor.
Land rolling
Soil sandy 3rd rate
No timber

North to sec. 1 and 6.
Over rolling sandy land slopes to the S.E. through
scattering sage and greasewood bush undergrowth
and bunch grass.
Difference bet. measurements of 40.00 chs. by two
sets of chainmen is .04 lks. position of middle
point

By 1st set. 39.98 chs.
By 2nd set. 40.02 chs. the mean of which is
40.00 Set an iron post 3 ft. long 1 in. in diam. 26 in. in
the ground for $\frac{1}{4}$ sec. Cor. marked on brass cap
451 on W. half and 36 on E. half.

Dig pits 18 x 18 x 12 in. N. and S. of post 3 ft. dist.
and raise a mound of earth $3\frac{1}{2}$ ft. base $1\frac{1}{2}$ ft.
high W. of cor.

Difference bet. measurements of 80.00 chs. by two sets
of chainmen is .04 lks. position of middle point.

By 1st set. 80.02 chs.
By 2nd set. 79.98 chs. the mean of which is
80.00 Set an iron post 3 ft. long 3 in. in diam. 24 in. in
the ground for cor. of T₂₇N. and T₂₈N. R₁₂
and R₁₃E. marked on brass cap T₂₈N. in N half
and T₂₇N. in S. half, T₁₂E S 36 in NW., T₁₃E S 31
in NE. T₁₃E S 6 in SE. and T₁₂E S 1 in S.W. quadrant.

Raise a mound of stone 2 ft. base, $1\frac{1}{2}$ ft. high S. of
cor. (Pits impracticable)
Land rolling.
Soil sandy 3rd rate
No timber

October 29th 1910.

General Description
Townships 27 N., Ranges 12 and 13 East, are
generally high rolling sandy prairie
lands, producing an abundant growth of.

BOOK 2522

much grass, and there is some good former
land along the De Nebeto Wash. in T27 N. R13 E.

October 29th 1910.

Sam L. White,
U.S. Marshall

39
(1)

U.S. TRANSITMAN
FINAL OATHS OF DEPUTY SURVEYOR AND HIS ASSISTANTS.

BOOK 2522

LIST OF NAMES.

A list of the names of the individuals employed by Van L. White

U.S. Transitman, ~~United States Deputy Surveyor~~, to assist in running, measuring, and marking the lines and corners described in the foregoing field notes of the survey of 3rd Guide Meridian E. through Tps 27 N. bet. Rs 12 and 13 E. showing the respective capacities in which they acted:

George B. Seig and T. Y. White, Chainmen.

Nelson Polacca and Oscar W. Fretters, Chainmen.

Ralph C. Sampson, Moundman.

Moundman.

Aceman.

Aceman.

William R. Carson, Flagman.

FINAL OATH OF ASSISTANTS.

We hereby certify that we assisted Van L. White

U.S. Transitman, ~~United States Deputy Surveyor~~, in surveying all those parts or portions of the 3rd Guide Meridian E. through Tps 27 N. bet. Rs 12 and 13 E.

of the Gila and

Salt River base and meridian, Territory of Arizona, which are represented in the foregoing field notes as having been surveyed by him and under his direction; and that said survey has been in all respects, to the best of our knowledge and belief, well and faithfully surveyed, and the corner monuments established, according to the instructions furnished by the ~~United States Surveyor~~

~~General for~~ Commissioner of the General Land Office

George B. Seig and T. Y. White, Chainmen.

Nelson Polacca and Oscar W. Fretters, Chainmen.

Ralph C. Sampson, Moundman.

Moundman.

Aceman.

Aceman.

William R. Carson, Flagman.

Subscribed and sworn to before me this 29th

day of Oct., 1910



Van L. White

U.S. Transitman

40 (8)
BOOK 2522

U.S. TRANSITMAN
FINAL OATH OF UNITED STATES DEPUTY SURVEYOR.

I, Van L. White, United States Transitman ~~Deputy Surveyor~~, do solemnly swear that, in pursuance of Special Instructions received from the Commissioner of the ~~United States Surveyor General for~~ General Land Office, bearing date of the

2nd day of Oct. 1907 day of and the 15th day of May, 1908, I have well, faithfully, and truly, in my own proper person, and in strict conformity with the instructions furnished by the United States Surveyor ~~General~~ of the ~~General Land Office~~, the Manual of Surveying Instructions, and the laws of the United States, surveyed all those parts or portions of the Third Guide Meridian East through Tps 27 North between Ranges 12 and 13 East

of the Gila and Salt River Base and meridian, in the Territory of Arizona, which are represented in the foregoing field notes as having been surveyed by me, and under my direction; and I do further solemnly swear that all the corners of said survey have been established and perpetuated in strict accordance with the Manual of Surveying Instructions, and the special written instructions of the United States Surveyor ~~General~~ of the General Land Office and in the specific manner described in the field notes, and that the foregoing are the original field notes of such survey.

Van L. White
United States ~~Deputy Surveyor~~ Transitman

Subscribed by said Van L. White, and sworn to before me }
this 27th day of December, 1912

Lytton R. Taylor
U.S. Commissioner
at San Diego, N.M.



APPROVAL.

OFFICE OF THE UNITED STATES SURVEYOR GENERAL,

Phoenix, Arizona APR 25, 1914

The foregoing field notes of the survey of the
3rd Guide Meridian East thru
Tps. 27 North, between
Ranges 12 and 13 East, of the
Gila and Salt River Base and Meridian, Arizona.

executed by Van L. White, U.S. Transitman
under Special Instructions from the Commissioner of the General Land Office ~~his contract No.~~, dated October 2, 1907 and May 15, 1908, having been critically examined, and the necessary corrections and explanations made, the said field notes, and the surveys they describe, are hereby approved.

Frank S. Ingalls
~~United States Surveyor General~~
SURVEYOR-GENERAL OF ARIZONA

I certify that the foregoing transcript of the field notes of the above described surveys in _____, has been correctly copied from the original notes on file in this office.

United States Surveyor General